



TL50

ATe
by Ford

Prestigious dimensions.



"Our aim was to create an entirely new level of sophisticated motoring. It was about the style, the stance, the way the car looks and behaves on the road. It was about details – like the chromed mesh grille. It was about building a car that, every time you see it, would make you feel good and feel like you want to just get in and drive it."

Graham Wadsworth,
Design Manager

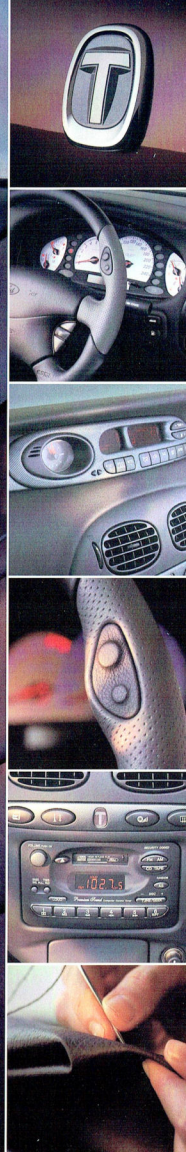
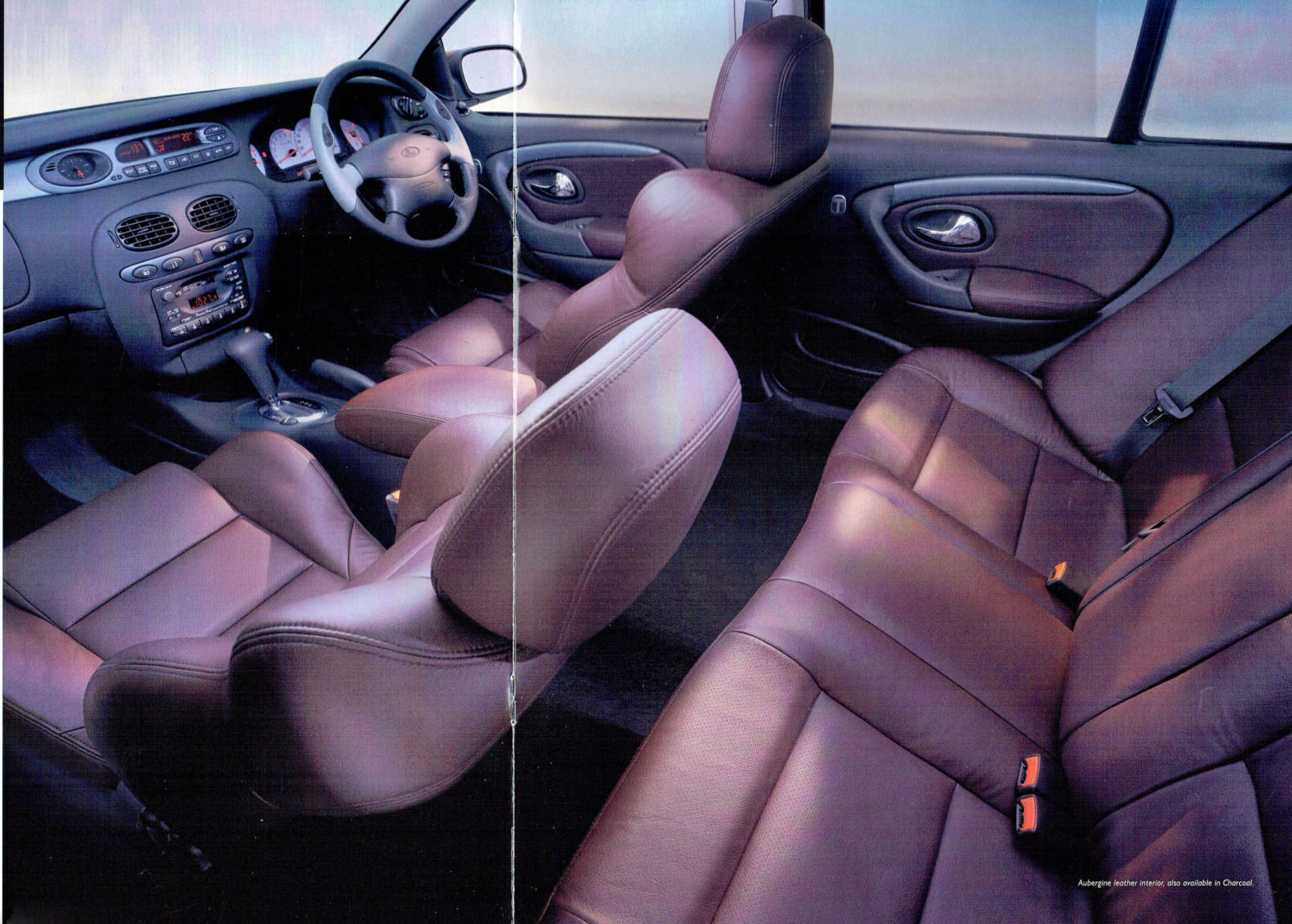
With the TL50, the T-Series formula for sophisticated and dynamic driving gains an additional and highly prestigious dimension. Size. It's for those who truly revel in the volume of luxurious room and comfort that only a long wheelbase can offer. The TL50 commands a highly individual and distinctive presence on the road. Here is refined motoring grandly proportioned and brilliantly executed. Exhilarating performance, uncompromising luxury, a full complement of the most desirable appointments. So come and discover all the rewards the exciting and sumptuous TL50 has in store for you.





Luxurious proportions.

The exhilarating performance and fine handling of the TL50 is accompanied by a cockpit of grand and luxurious proportions. Inside the spacious full leather interior you will recognise quickly that the TL50 is first and foremost about extracting maximum driving pleasure from every kilometre you travel. The instrument display is clear and accurate, the controls are ergonomically placed. And it is fully equipped. Climate control air conditioning. Premium audio, with 6-stack CD player. In the TL50, every important function is expressed with tasteful style and executed with an uncompromising attention to detail.



Aubergine leather interior, also available in Charcoal.

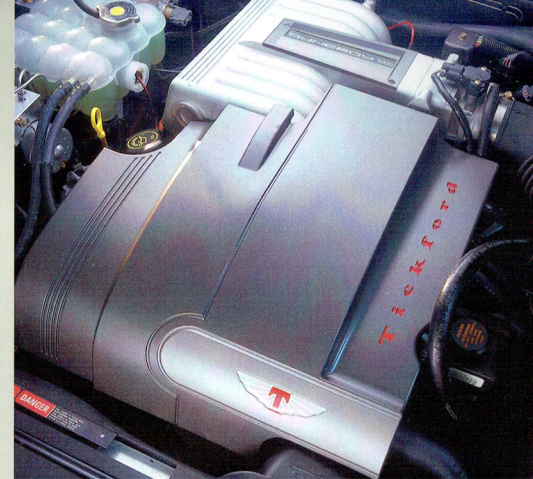
Engineering synergy.



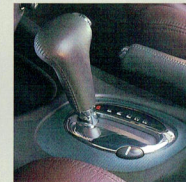
"The Electronic Sports Shift is a real 'wow' feature. The driver's going to say, 'Hey, I can do this now!' It gives the driver a pseudo-manual transmission, allowing gear positions to be maintained. In normal mode, it's an adaptive shift auto transmission with five shift maps. Is technology boring? When you drive this you're going to say, 'No way!'"

Ivan Viduka,
Power Train Engineer

The TL50 is powered by Ford's 200 kW low friction "Synergy 5000" 5-litre V8 engine. It is a name that perfectly reflects the spirit of the car. The TL50 is a synergistic sum of all its parts, smooth, responsive and completely in tune with the driver. The engine is teamed with a 2-mode, 5-program automatic transmission that includes an Electronic Sports Shift option, allowing you to control gear changes from the steering wheel. TL50 is also equipped with a sports-tuned suspension, 18-inch wheels and big, powerful ABS disc brakes. TL50 gives dynamic road handling and impressive performance a truly luxurious feel.



The Tickford-modified 200 kW "Synergy 5000" 5-litre V8 engine delivers power that is smooth and flexible. Numerous enhancements give the engine a pleasing smooth-revving characteristic.



The electronic 4-speed automatic transmission includes state-of-the-art Electronic Sports Shift – the most enjoyable way in which a driver can transfer power to the road!

Motor sport performance inspired the technology that produced the big 4-wheel disc brakes. The large disc areas provide the braking performance demanded by a car of this calibre.

The engineers at Ford and Tickford have given the TL50 a fully independent suspension that delivers impeccable ride and handling qualities.



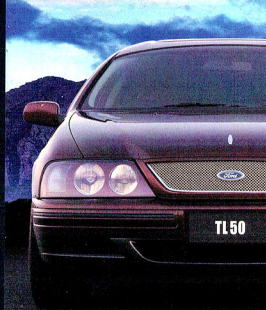
Engine					
Engine Type	'Synergy 5000' Sequentially injected, 5.0 litre, V8.				
Compression ratio	9.0:1				
Power	200 kW @ 5000 rpm				
Torque	420 Nm @ 3750 rpm				
Engine management	EEC-V				
Transmission/Ratios					
	EES Automatic				
1st	2.39				
2nd	1.45				
3rd	1.00				
4th	0.68				
5th	-				
Reverse	2.09				
Final Drive Ratio	3.45				
Suspension					
Front	Enhanced fully independent double wishbone with Koni shock absorbers and 27.5 mm front stabiliser bar.				
Rear	Independent rear suspension package with variable rate springs and Koni shock absorbers. (Unique TL50 settings)				
Brakes					
Brake master cylinder	Increased bore size and revised bias				
Front	329 x 28 mm grooved rotors with twin piston calipers.				
Rear	Grooved 287 x 10.6 mm rotors				
Tyre size	P245/40ZR18				
ABS	4 channel				
Fuel					
Grade	PULP				
Fuel Tank Capacity (litres)	68				
Dimensions					
Exterior (mm)					
Front track	1566	Interior (mm)			
Rear track	1547	Front		Rear	
Front overhang	922	Headroom ^(a)	991	Headroom	1004
Rear overhang	1299	Shoulder room	1523	Shoulder room	1509
		Legroom	1081	Legroom	1074
		Hip room	1420		
General					
Kerb weight (kg)	1745				
Luggage capacity (l)	550				
Min. turning circle (m)	11.3				

TL50 Standard/Optional Features	
Individual vehicle build numbers and signed engine 'built by' plate	Standard
ESS sports shift/adaptive automatic transmission	Standard
Traction Control ^(a)	Standard
Momo 4 spoke leather wheel with ESS controls and integrated cruise control switches	Standard
Leather wrapped t-bar/gear knob	Standard
Message display centre with ambient temperature display, climate controls, trip computer and overspeed warning	Standard
Gauges – Blue on white graphics with 240 km/h speedometer, tachometer, oil pressure, battery voltage, odometer, tripmeter, service due indicator, door ajar car outline, ESS gear indicator	Standard
Trip computer	Standard
Front and rear power windows	Standard
Automatic climate control	Standard
Power driver's seat	Standard
'Raindrop' dash and door inserts	Standard
Remote illuminated entry/exit systems	Standard
Sunroof	Optional
Premium 250 watt sound system with boot-mounted six-stack CD	Standard
18" alloy wheels	Standard
Driver airbag	Standard
Passenger airbag	Standard
Car alarm	Standard
Wheel lock nuts	Standard
Embroidered floor mats	Standard
Aubergine or Charcoal leather interior with Special Sports seats	Standard

(a) Operation of Traction Control System is not compatible with any gas conversions.

(b) Front headroom is reduced by approx. 40 mm when the optional Ford sunroof is fitted.

An Ownership
experience
you're going
to love.



FTE Premium
Service
Experience.

New Vehicle Warranty.*

Covers your Ford against defects in factory materials or workmanship for the first 3 years or 100,000 km – whichever occurs first.

When fitted at or prior to the time of vehicle delivery, Ford Approved Accessories are also covered by the Ford 3 Year/100,000 km 'Bumper to Bumper' Warranty.

Five Year Perforation Corrosion Warranty.†

Covers the original vehicle's body against perforation corrosion for the first five years of its life.

* Conditions and exclusions apply.
See your Authorised FTE Dealer for details.

This brochure is designed to provide you with a general introduction to the Ford Products (including available optional equipment) referred to, and should be read in conjunction with the latest specification sheet. Because of changes in conditions and circumstances Ford* reserves the right, subject to all applicable laws, at any time, at its discretion, and without notice, to discontinue or change the features, designs, materials, colours and other specifications and the prices of their products, and to either permanently or temporarily withdraw any such products from the market without incurring any liability to any prospective purchaser or purchaser. The latest specification sheet should be referred to for information on the availability, ordering and use of optional equipment. Always consult an Authorised FTE Dealer for the latest information with respect to features, specifications, prices, optional equipment and availability before deciding to place an order. *FORD MOTOR COMPANY OF AUSTRALIA LIMITED (A.C.N. 004 116 223) Registered Office: 1725 Sydney Road, Camberfield, Victoria 3061, Australia. †Conditions and exclusions apply. See your Authorised FTE Dealer for details. Printed September 1999. FCL 76279

Lifelong Panel Warranty.†

Covers replacement outer body panels against perforation corrosion for the life of the vehicle.

Ford Credit Financial Services.

Ford Leasing and Red Carpet Options are available to approved applicants of Ford Credit Australia Limited. Enquire at your Authorised FTE Dealer.

Fleet Communication Centre.

Our Fleet Communication Centre is available to assist fleet customers with information on FTE products and services. Call 1800 673 207.

FTE Premium Service is the key to maintaining your TL50 in peak operating condition at all times. It is a truly personalised and interactive service experience. No longer are you denied the privilege of watching while our technicians work. In fact, your FTE dealer actively encourages your participation. At your FTE servicing dealership, you will be assigned your own personal FTE Dealer Service Representative. This person will come to know your vehicle almost as well as you do. You are free at any time to call and discuss any aspect of your TL50 driving experience. When it's time for service, your FTE Dealer Service Representative will run through all the details with you. Any work is agreed upon by you before it is carried out. And all work is conducted by specially trained FTE Dealer technicians. A loan vehicle will be offered to you whenever your TL50 is at an FTE dealership for service.

You are always welcome to consult with your FTE Dealer service technician. And while your TL50 is naturally covered by the Ford warranties explained in this brochure, normal service repairs are performed to an agreed up-front price. In addition to FTE Premium Service there is FTE Premium Assist for three years. Valuable benefits also include:

- Free fuel to get you on your way should you inadvertently run out.
 - Centralised service booking facility.
 - Emergency vehicle access/ replacement of lost keys.
 - Travel advice/benefits.
- Among the many benefits offered in the event of a mechanical breakdown are:
- Roadside Assistance.
 - Emergency towing/transportation.
 - Emergency accommodation.
 - Urgent message relay.
 - Accident co-ordination.
 - Medical advice.
 - Legal advice.

