

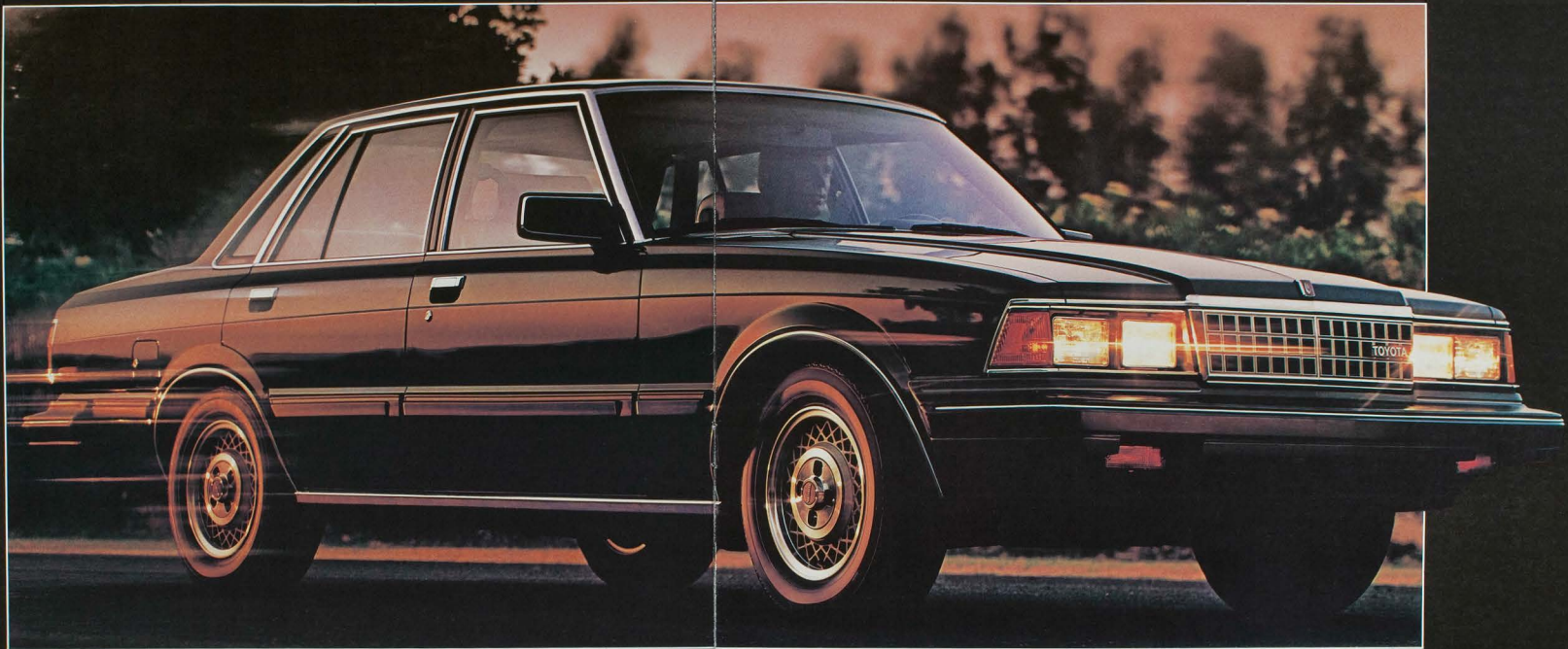
CRESSIDA

BY TOYOTA



OF
WEAT
FEELING
TOYOTA





**1983 CRESSIDA.
THE ULTIMATE
IN LUXURY AND
PERFORMANCE.**

Along the boulevard, the luxurious appointments of this magnificent new sedan let you enjoy the drive as never before.

It's only when the pace of traffic quickens, or when superhighways give way to serpentine roads that you will become aware of the stirring new personal-

ity that lies beneath those stately Cressida lines. Suddenly, you are behind the wheel of a true high-performance road car: a luxurious sedan with handling and roadability characteristics that rival the costliest European sports touring sedans.

Under the hood of the new Cressida lies a 2.8 liter 6-cylinder, electronically fuel-injected Twin Cam engine.

You may never need all of its potential, but a touch of the accelerator tells you it is always at your command.

Furthering this blend of Cressida luxury and performance is still another breakthrough in modern automotive engineering: Toyota's new Electronically Controlled 4-speed automatic overdrive transmission with lock-up torque converter.

This remarkable "thinking transmission" uses a

microcomputer to adjust its gearshifting pattern for an optimized balance between economy and performance. The first of its kind in the industry, it lets the driver choose at the touch of a button a "Normal" driving mode or special "Power" or "Economy" modes.

For 1983 you can also apply the Sedan's Twin Cam power through an optional 5-speed close-

ratio overdrive transmission with a limited-slip differential.

The skillful melding of Cressida's comforts with high performance is further enhanced by its 4-wheel ventilated disc brakes for confident stopping power, and by a totally new independent rear suspension system that provides stability and roadworthiness in the traditional manner of European road cars.

The new Cressida Luxury Sedan is, without doubt, a most fulfilling way to enter the realm of sports touring sedans—a class previously marked by cars priced well above this quality-crafted 1983 Luxury Sedan.

Shown with optional equipment. See Features chart for details.





CRESSIDA.
CLASSIC
STYLING.
PERFORMANCE
DESIGN.

The 1983 Luxury Sedan's classically sculptured lines are as purposeful as they are handsome.

For example, the newly styled Cressida grille highlights a dramatic, sloping hoodline that helps to reduce aerodynamic interference for quieter and

more efficient motoring. Windshield wipers are semi-concealed to further help smooth the flow of air over this sleek, new sports touring sedan.

Roof height is precisely scaled to allow plentiful interior head room yet remain pleasing to the eye; at the same time, its design is an aerodynamically efficient one. Minimal overhang at front and

rear contributes to the Cressida's contemporary good looks and saves weight, yet trunk space is sized for generous amounts of luggage.

Fit and finish are impeccable. The Cressida's body seams are carefully, evenly aligned. Doors close with a solid, secure feel. And the Cressida's metallic paint choices have a special "clear coat" applied over the color finish for added sheen and durability.

Cressida's redesigned bumpers flow smoothly into the body and wider body side moldings help protect your Cressida's finish from incidental damage, while emphasizing the dramatic sweep of the body lines. Larger multi-segment taillights add still another touch of distinction.

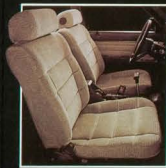
The Luxury Sedan's standard aluminum alloy

wheels are more than eye-catching; these strongly constructed wheels help reduce unsprung weight, thus contributing to Cressida's new level of handling and agility. Wide, road-gripping 195/70SR14 steel-belted radial tires also add measurably to Cressida's sports touring sedan qualities.

As you explore the world of Cressida's comforts, conveniences and

high-technology design features that are offered for 1983, it will become obvious that for performance and style, and for quality craftsmanship, the Cressida Luxury Sedan is the eminently sensible automotive value for 1983.

Shown with optional equipment. See Features chart for details.





A SUMPTUOUS ENVIRONMENT.

One look, one touch, and you will recognize the understated but unmistakable presence of luxury that is the hallmark of this sumptuous, spacious Toyota. It is all around you: in the available glove-soft leather shown here, or the

elegant velour fabric carefully selected for style, comfort and durability; in the expanse of cushioned carpeting; in handsomely styled door panels fitted with convenient map pockets in front. Even your luggage is transported in the luxury of Cressida's fully carpeted trunk.

The Luxury Sedan's interior provides a new level of comfort for driver

and passengers. Reclining front bucket seats with 4-way adjustable headrests are designed for mile after mile of untiring motoring, while extended seat tracks provide increased leg room for 1983.

The driver's seat fully adjusts for optimum driving comfort and control. You can raise or lower the seat cushion height, vary the seatback angle, or change the degree of lumbar support to reduce lower-back fatigue on

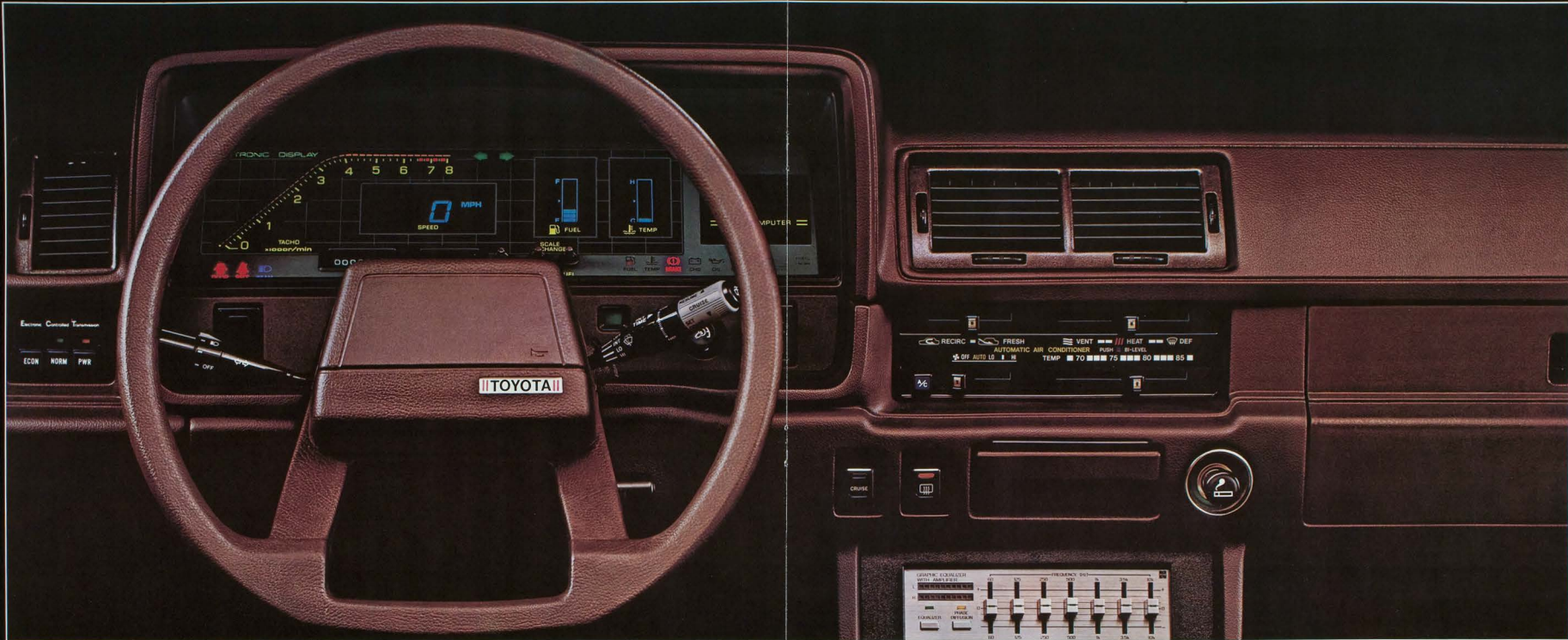
long trips. You can also adjust Cressida's convenient tilt steering wheel to the most comfortable driving position. Your rear seat passengers will enjoy greater-than-ever leg room, and their adjustable headrests provide easy-chair comfort for touring in a most relaxing manner.

Notice, too, how the new Cressida's unique motorized front shoulder belts have been designed for both comfort and security. When a door is opened, the belt is positioned out of the way for easy entry or exit. When the door is closed and the ignition switch is turned on, the belt automatically returns to the proper wearing position.

The discriminating buyer looking for an automobile with both exceptional road performance and a luxurious motoring environment need look no further than the sumptuous 1983 Cressida Luxury Sedan.

Shown with optional equipment. See Features chart for details.





**THE CRESSIDA
COMMAND
CENTER.**

Cressida's ergonomically engineered "command center" is designed for confident, comfortable driving. The padded steering wheel permits an unobstructed view of either

traditional dials and gauges, or the graphic readouts of the Sedan's optional all-new Electronic Display Instrument Panel with Trip Computer, shown here. It displays a graphic tachometer with color-coded indicators, and a dual-scale (mph/kph) speedometer with

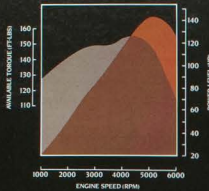
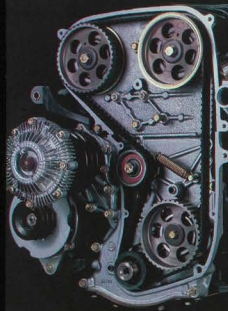
digital readout. There is a graphic indicator for coolant temperature and a dual-mode fuel level display; it indicates the remaining fuel in $\frac{1}{4}$ -tank increments and displays the last quarter-tank of fuel in $\frac{1}{2}$ -gallon increments. The companion Trip Computer can calculate estimated time of arrival, miles-per-gallon, time or distance remaining to your destination, and remaining cruising range.

Controls for the tungsten halogen high/low beam headlights and windshield wipers with adjustable intermittent cycle are stalk-mounted, as is the switch for the Cruise Control that automatically maintains a pre-set cruising speed for relaxed driving. Automatic temperature control air conditioning switches are centrally

located, as are controls for Cressida's state-of-the-art electronic AM/FM/MPX 4-speaker stereo receiver with automatic power antenna. Pushbuttons to select the shifting mode for the Electronically Controlled 4-speed automatic overdrive transmission are to the left of the instrument panel. And on the driver's side armrest are switches for the power

windows, power remote control outside mirrors and for Cressida's power-operated central door locking system. For 1983, Cressida conveniences make driving easier, more masterful and more enjoyable. Shown with optional equipment. See Features chart for details.





5M-GE TWIN CAM ENGINE MAP

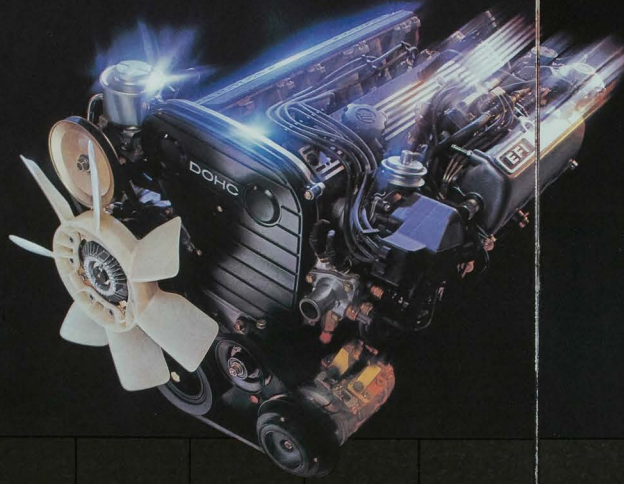
Luxury Sedan's new independent rear suspension has trailing arms, coil springs and stabilizer bar for a smooth ride with European road car handling.



Competition-inspired optional 5-speed transmission with limited-slip differential is available on Luxury Sedan.



Twin Cam engine uses a durable cogged fabric rubber camshaft drivebelt system for quieter operation. Engines 143 horsepower is nearly 25% greater than last year yet provides traditional Toyota fuel economy.



Innovative Electronically Controlled 4-speed automatic overdrive transmission lets driver select shift pattern modes at the touch of a button to suit varying driving conditions.



Optional Electronic Display Instrument Panel provides readouts of speed, engine rpm, fuel level and coolant temperature.



Cressida's Trip Computer, included in the optional Electronic Display Instrument Panel, displays various travel time/distance information plus miles-per-gallon.



CRESSIDA: ACHIEVEMENT THROUGH INNOVATION.

The culmination of 20 years of twin cam experience is found in the 1983 Cressida's Series 5M-GE Twin Cam engine. This 2.8 liter 6-cylinder, fuel-injected engine produces 143 horsepower at 5200 rpm for truly impressive performance. To eliminate the need for costly valve

adjustments, it uses a hydraulically-cushioned valvetrain design. A durable cogged camshaft drivebelt system provides quieter operation. Spark plugs are platinum-tipped for longer life. A microcomputer controls the Electronic Fuel Injection (EFI) system to precisely meter fuel for optimum efficiency from cold-morning starts to passing speeds.

The Luxury Sedan's new 4-wheel independent suspension has MacPherson struts at the front, with a new independent rear suspension (IRS) that includes trailing arms, coil springs and a stabilizer bar. It gives this new Cressida a smooth ride and responsive handling with minimal body lean. With the introduction of the 1983 Cressida's Electronically Controlled 4-speed automatic overdrive transmission, Toyota

continues its world leadership in modern powertrain development. Now, by simply touching a button, the driver can program this 4-speed automatic overdrive transmission for "Economy," "Normal" or "Power" operating modes. A microcomputer controls the transmission's gear-shifting points to meet driving conditions. In

addition, the fluid-coupled torque converter automatically locks-up engine and driveshaft—like a manual transmission—to eliminate drive-line slippage and improve both throttle response and fuel economy* in second, third or fuel-saving overdrive fourth gear. In keeping with the Cressida's dramatically increased capabilities for European-style road

performance, aggressive 195/70SR14 steel-belted radial tires and 4-wheel power-assisted and ventilated disc brakes are standard. An optional 5-speed overdrive transmission with a traction-increasing limited-slip differential is available on the new Luxury Sedan to impart the competition-

inspired performance favored by many motoring enthusiasts. *See EPA mileage statement on specifications page. Shown with optional equipment. See Features chart for details.



**THE LUXURIES OF
A CRESSIDA, THE
CONVENIENCE
OF A WAGON.**

Virtually every conceivable comfort, convenience and driving assist that should be part of a quality-crafted fine automobile is a standard, built-in part of the Cressida Luxury Wagon.

And all of it is beautifully blended with the power and fuel-efficiency* of an electronically fuel-injected Twin Cam engine, plus all the practicalities you look for in a wagon.

The distinctive Luxury Wagon has reclining front bucket seats with fully adjustable driver's seat. Windows, centrally controlled door locks and outside rear view mirrors

are power-operated. For added driving ease, there is power steering, a tilt steering wheel, Cruise Control and, of course, the innovative Electronically Controlled 4-speed automatic overdrive transmission.

To help improve rearward vision in inclement weather, the rear window

is equipped with an electric defogger and wiper/washer system.

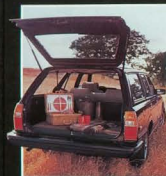
For your listening pleasure, the Luxury Wagon has an electronic tuning AM/FM/MPX 4-speaker stereo receiver with automatic power antenna.

You'll find all this, and more, standard for 1983. As fashionable and powerful as it is, the new Luxury Wagon nevertheless retains the traditional

attributes that make a 5-door wagon a versatile vehicle for town or country. It will comfortably accommodate five people, and provides generous luggage or cargo space behind the rear seat. When you want to carry fewer people and transport more cargo, simply fold down the Wagon's rear seat to create nearly 66 cubic feet of flat, carpeted carrying space.

The brilliant Cressida Luxury Wagon. It is beautiful proof that luxury can be practical, too.

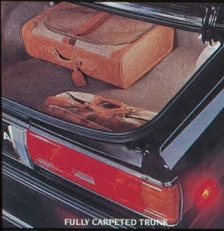
*See EPA mileage statement on specifications page.



FEATURES



TUNGSTEN HALOGEN HEADLIGHTS



FULLY CARPETED TRUNK

The power assists that you expect in a sophisticated road car are there, including power steering with tilt wheel and Cruise Control.



AUTOMATIC POWER ANTENNA



POWER STEERING WITH TILT WHEEL



RECLINING FRONT BUCKET SEATS



AUTOMATIC TEMPERATURE CONTROL AIR CONDITIONING

Cressida comforts and conveniences combine with European-type handling and roadability to provide a motoring experience second to none.



LIGHTED VANITY MIRROR



AUTOMATIC SHOULDER BELTS



ELECTRONIC AM/FM/MPX 4-SPEAKER TUNER WITH CASSETTE AND GRAPHIC EQUALIZER



FOLD-OUT REAR SEAT HEADRESTS

Of all the pleasures to be discovered in the 1983 Cressidas, perhaps the most satisfying is the very completeness of their comforts and conveniences.

OPTIONS



TINTED WINDOWS AND POWER DOOR LOCKS



CRUISE CONTROL

New Cressida Sedan and Wagon offer a world of tuning pleasures. A select list of options lets you tailor Cressida to suit your personal preferences.



POWER OPERATED SUNROOF



ELECTRIC SUNSHADE CONTROLS, OVERHEAD DOME LIGHTS



POWER OPERATED SUNROOF

BUCKLE UP...IT'S A GOOD FEELING!

Toyota urges you to use your seat belts every time you drive. Safety experts say that generally the safest place in a collision is inside your vehicle's seat belts can help keep you there. A properly adjusted seat belt can help the

driver maintain better vehicle control. Because small children can be injured during quick turns or sudden stops they should always be provided with a child restraint system dynamically tested to meet federal standards. Select one carefully.



The Cressida's seat belts are designed to meet or exceed all government requirements for effectiveness, and are engineered for comfort and ease of use.

• Front seats feature Toyota's unique *Automatic Shoulder Belt System*. When a front door is opened, the shoulder belt moves out of the way for easy entry or exit. When the door is closed and the ignition switch turned on, the motor-driven shoulder belt automatically returns to the proper wearing position.

FEATURES

	4-Door Luxury Sedan	5-Door Luxury Wagon
S—Standard O—Optional —Not Available		
MECHANICAL		
2.3 liter 6-cylinder Twin Cam engine	S	S
Electronic Fuel Injection	S	S
Fully transistorized ignition	S	S
Electronically Controlled 4-speed automatic overdrive transmission with shift pattern selector and lockup torque converter	S	S
5-speed overdrive transmission with limited-slip differential	O	S
MacPherson strut front suspension	S	S
Power-assisted brakes	S	S
Independent rear suspension with ventilated 4-wheel disc brakes	S	—
Steel-belted radial tires	S	S
EXTERIOR		
14" x 5.5" aluminum alloy wheels	S	S
Tungsten halogen headlights	S	S
Wide protective side moldings	S	S
Dual outside mirrors with power remote control	S	S
Power sunroof	O	—
Rear window wiper/washer	S	—
Two-Tone Paint Package—includes color-keyed bumpers and body side moldings	—	—
INTERIOR		
Tachometer/voltmeter/oil pressure and coolant temperature gauges	S	S
Resettable tripmeter	S	S
Electronic Display Instrument Panel—includes digital speedometer, graphic electronic tachometer, fuel and temperature level indicators, and Trip Computer	O*	—
Cruise Control	S	S
Power steering with tilt steering wheel	S	S
Automatic temperature control air conditioning	S	S
Steering column-mounted headlight, headlight flasher, adjustable intermittent windshield wiper/washer and turn signal controls	S	S
Electric rear window defogger	S	S
Remote trunk release	S	—
Locking fuel filler door with remote release	S	S
Passenger visor vanity mirror with light	S	S
Digital quartz clock	S	S
Illuminated entry system	S	S
Power windows	S	S
Centrally controlled power door locks	S	S
Tinted glass with shaded windshield band	S	S
Reclining front bucket seats with 4-way adjustable headrests	S	S
Driver's seat height and lumbar support adjustment	S	S
Luxury velour cloth seat trim	S	—
Leather Seat Trim Package	O*	—
Automatic shoulder belt system	S	S
Full console with storage area and armrest	S	S
Cut-pile carpeting	S	S
Carpeted trunk/cargo area	S	S
Electronic AM/FM/MPX stereo receiver with automatic power antenna	S	S
Electronic AM/FM/MPX 4-speaker stereo tuner with cassette, graphic equalizer and automatic power antenna	O	O

*Not available with Electronic Display Instrument Panel. *Available on Sedans with Electronically Controlled Transmission only. †Rear door lock included. ‡Includes leather-wrapped steering wheel.

SPECIFICATIONS

ENGINE TYPE	6-cylinder Twin Cam EFI	
DISPLACEMENT	2.6 liters (27.59 cc)	
HORSEPOWER (SAE NET)	143 hp @ 5200 rpm	
TORQUE (SAE NET)	154 lb-ft @ 4400 rpm	
BODY/FRAME CONSTRUCTION		
	Unitized body	
SUSPENSION, FRONT		
MacPherson strut, coil springs, stabilizer bar		
SUSPENSION, REAR (SEDAN)		
Independent rear suspension, coil springs and stabilizer bar		
SUSPENSION, REAR (WAGON)		
4-link with coil springs, shock absorbers, lateral tracking bar and stabilizer bar		
STEERING TYPE		
Power-assisted recirculating ball, collapsible shaft		
BRAKES, SEDAN		
Power-assisted ventilated 4-wheel disc		
BRAKES, WAGON		
Power-assisted ventilated front disc, rear drum		
	4-Door Luxury Sedan	5-Door Luxury Wagon
EXTERIOR DIMENSIONS (inches)		
Wheelbase	104.1	104.1
Overall length	186.2	186.6
Overall width	66.5	66.5
Overall height	54.3	55.5
INTERIOR DIMENSIONS (inches)		
Head room (front)	38.3	37.9
(rear)	37.4	37.6
Leg room (front)	42.7	42.7
(rear)	37.2	31.1
CURB WEIGHT (lbs.)		
	3020	
CAPACITIES		
Cargo capacity, rear seat down (cu. ft.)	N/A	65.3
Luggage capacity, rear seat up (cu. ft.)	13.0	23.0
Fuel tank capacity (gallons)	17.2	17.2
TIRES		
Type	Steel-belted radial	Steel-belted radial
Size	blackwall 195/70SR14	blackwall 195/70SR14
EXTERIOR COLORS†		
Solid Super White	Metallic (Clear Coat) Deep Red	Optional (Clear Coat) Dark Brown Metallic
Gloss Black	Beige	Apricot Metallic
	Blue	
	Dark Blue	
	Apricot	
	Dark Brown	
*Some colors not available on all models. N/A—Not applicable.		
†EPA STATEMENT: EPA mileage figures not available at time of printing. Consult your Toyota dealer.		
*Remember: Compare the mileage estimate to the EPA "Estimated MPG" of other cars. You may get different mileage depending on how fast you drive, weather conditions and trip length.		
Specifications and equipment are based on the available information at time of printing and are subject to change without notice. Cover vehicle and others shown with optional equipment. See Features chart for details. For information on additional options and accessories, contact your Toyota dealer.		

QUALITY CARS, PARTS & SERVICE.

Toyota dealer parts and service reflect the same quality and dependability you'll find in the 1983 Cressidas. A computerized parts inventory control system helps assure availability of Genuine Toyota and Toyota-approved Parts at nearly 1100 dealers nationwide. Additionally,

Toyota-trained service technicians use the latest equipment to care for your Toyota. You can count on Toyota dealers to help you keep that Toyota feeling wherever you go.



• Outer rear seats have combination seat and shoulder belts with *Emergency Shoulder Retractors*. They allow normal movement but under severe changes in vehicle motion, they automatically restrain body

movement. The center belt is designed for easy installation of a child restraint system. It is recommended that these systems be installed in the center rear seat. (Follow manufacturer's recommendation for installing these systems.) Remember, for peace of mind, buckle up...it's a good feeling!