



GET
THE
BEST
FEELING
TOYOTA

TRUCKS
BY TOYOTA



SR5 XTRACAB SPORT TRUCK



A NEW GENERATION OF TRUCKS

Something right is on the truck scene for 1984: the totally new Toyota Trucks. Toyota, builder of one of the best-selling truck lines in the world, brings you the next generation: the most technologically advanced trucks Toyota has ever created.

The 1984 Toyota Trucks combine chassis and powertrain design breakthroughs, bold new styling, and traditional Toyota tough-truck quality. The result: the right truck for you.

For 1984 there are 16 dynamic new models including extra-spacious Xtracabs, part of the boldly styled lineup of 4x2 and 4x4 trucks, plus two new Cab/Chassis models.

Toyota Trucks give you the industry's most modern gas and diesel-fueled powerplants—including husky 2.4 liter

engines with Electronic Fuel Injection that provide more horsepower than any Toyota Truck ever.

You have a wide choice of efficient, smooth-shifting transmissions for 1984, including Toyota's innovative, optional 4-speed automatic overdrive.

Uniquely styled cabs, with more glass for greater visibility, are the largest Toyota cabs ever. In fact, the new Xtracabs have more leg room than any small truck.

You'll see and feel the durability built into the new Toyota Trucks: in the

stability of the rugged full-box frame, in the double-wall beds on most models, in the Soft-Ride rear suspension, in reduced noise and vibration—quality everywhere, inside and out.

Wherever you go, whatever you do, there is a quality-built 1984 Toyota Truck that does it right.

Shown with optional equipment. See Features chart for details.

RIGHT!



SR5 XTRACAB SPORT INTERIOR



EXTRA ROOM. EXTRA COMFORTS

The first thing you notice when you sit behind the wheel of the boldly-styled 1984 Toyota SR5 Xtracab Sport Truck is room: room to get in, room for you and your passenger to really stretch out. You're getting more leg room than any other small truck!

The Xtracab Sport Truck gives you extra carry-it-all space behind the

reclining bucket seats, too. A removable cargo shelf gives you room to take along tools, sports gear, an ice chest, the works.

With SR5 Xtracab, you're in for the most comfortable trucking on the road. There's plush carpeting, reclining bucket seats, full console, full instrumentation, and a minimum of road noise. Settle in, sit back and enjoy the front-row concert quality sound of an AM/FM/MPX stereo radio or an optional electronic tuner with

cassette player, graphic equalizer and four speakers.

With the introduction of the new Xtracab for 1984, Toyota's remarkable 4-speed automatic overdrive transmission is now available on more models than ever. This innovative transmission is designed to provide surprising fuel efficiency* and performance. The overdrive fourth gear reduces engine rpm at cruising speeds to help lessen engine wear.

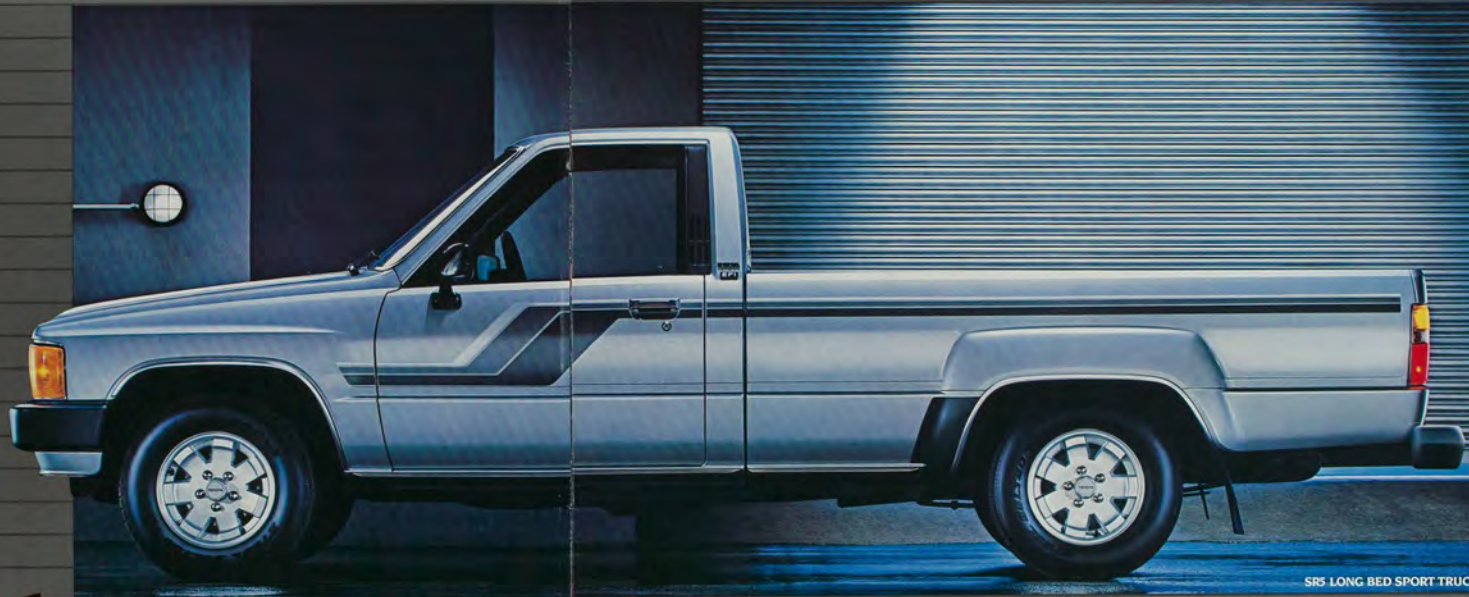
You can also equip the new SR5 Xtracab with such options as a 7-way

adjustable Sport Seat, power steering, sun/moonroof, air conditioning, or a Power Package with Cruise Control, tilt wheel, power windows, power antenna, and more.

The SR5 Xtracab Sport Truck for 1984. It's the roomiest truck Toyota has ever built. And the most comfortable truck you've ever owned.

*See EPA mileage statement on specifications page.
Shown with optional equipment. See Features chart for details.

EXTRA



SR5 LONG BED SPORT TRUCK

SHARP!

**SR5 SPORT TRUCKS.
NEW STYLE, NEW
TECHNOLOGY**

SR5 Sport Trucks are new from the ground up. With their sculptured, aerodynamic lines and advanced-technology running gear, they're ready to run on the job or on the town.

The SR5's 2.4 liter engine gets a big boost in horsepower and torque from Toyota's new, exclusive multi-point

Electronic Fuel Injection system. There's never been a more powerful Toyota Truck!

A 5-speed overdrive gearbox puts the power to the road. By reducing engine rpm at cruising speed, it helps increase fuel economy* and lessens engine wear.

Redesigned front-end geometry, plus a new rear suspension system with staggered-mount shock absorbers gives the SR5 more handling ease, comfort and stability than ever before. There's also the confident stopping

power of ventilated front disc brakes, plus the proven performance of radial tires.

The handsomely arranged, padded dash has easily readable full instrumentation. All controls are placed to fall easily and naturally to hand and fingertips.

You get it all—and more—in the 1984 Toyota SR5 Sport Trucks.

*See EPA mileage statement on specifications page.
Shown with optional equipment. See Features chart for details.





LONG BED DELUXE AND XTRACAB DELUXE TRUCKS



VERSATILE VALUE FOR WORK AND PLAY

The 1984 Toyota Deluxe Trucks make uncommonly good sense for work or play. These budget-minded trucks come fully equipped with quality features built right in for extra value.

A fuel-thrifty* 24 liter SOHC engine produces the torque and horsepower

to move a 1400 lb. payload** around town or around the country.

A smooth-shifting 5-speed overdrive gearbox is standard. For added driving ease, choose the innovative, optional Toyota 4-speed automatic overdrive transmission.

With the Xtracab's larger interior dimensions, there's plenty of storage space behind the bucket seats. The Long Bed Deluxe offers comfortable seating for three adults.

Both Xtracab and Long Bed Deluxe Trucks have rugged, double-wall bed

construction, and one-touch tailgates for fast, easy cargo access. Inside cargo tie-down hooks help secure the payload, and on the Xtracab, a new rear deck lamp lights the loading area.

Toyota Trucks are designed to save you money in the long run too, with such features as a fully transistorized ignition system for dependable starts and low maintenance.

The road-tuned, load-tuned suspension is engineered for years of reliability. Power-assisted ventilated front

disc and rear drum brakes provide fade-resisting stopping power. For added rigidity and durability, there is Toyota's exclusive full-box frame construction.

No doubt about it, the 1984 Toyota Trucks are tough, but easy to live with.

*See EPA mileage statement on specifications page.

**Including occupants, equipment and cargo. Shown with optional equipment. See Features chart for details.

VALUE

More Power

Toyota's exclusive, multi-point Electronic Fuel Injection, standard in all SR5 4x2 models with 2.4 liter gasoline engines, improves horsepower and torque by metering the correct amount of fuel. EFI models are rated at 33 EPA Estimated MPG, 33 Estimated Highway MPG.*

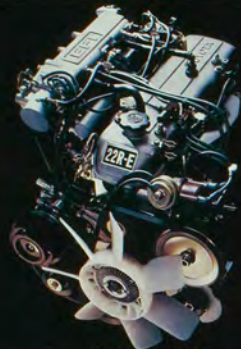


ELECTRONIC FUEL INJECTION



TORSION BAR FRONT SUSPENSION

LEAF SPRING REAR SUSPENSION



2.4 LITER SOHC EFI ENGINE



RUGGED FULL-BOX FRAME CONSTRUCTION



DOUBLE-WALL BED

Rugged Construction

Toyota's rugged full-box frame adds increased strength and helps eliminate frame twisting for a smooth, stable ride. Deluxe and SR5 models feature torsion bar front suspension and Soft-Ride leaf spring rear suspension with staggered-mount rear shocks. Most models have cargo beds with tough, double-wall construction.

*Remember: Compare this estimate to the EPA "Estimated MPG" of other trucks with manual transmission. You may get different mileage depending on how fast you drive, weather conditions and trip length. Actual Highway mileage will probably be less than the "Highway Estimate."



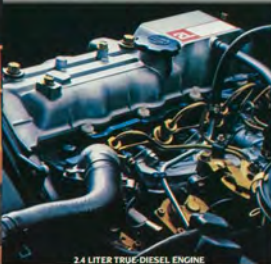
LONG BED DIESEL DELUXE TRUCK

Shown with optional equipment. See Feature chart for details.



True Diesel Economy

The all-new 2.4 liter Toyota true-diesel engine with heavy-duty dual-battery electrical system and heavy-duty starter motor provides powerful yet fuel-efficient performance. Toyota's unique Fiber-Reinforced Metal pistons help improve engine performance and durability.



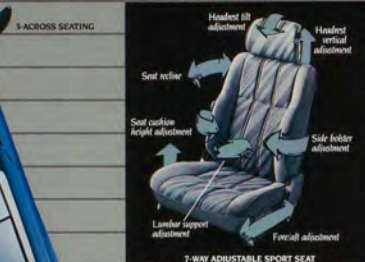
2.4 LITER TRUE-DIESEL ENGINE

**Remember: Compare this estimate to the EPA "Estimated MPG" of other trucks with diesel engines. You may get different mileage depending on how fast you drive, weather conditions and trip length. Actual Highway mileage will probably be less than the "Highway Estimate."

POWER!



FULL INSTRUMENTATION



3-CROSS SEATING

Headrest fill adjustment
Headrest vertical adjustment
Seat recline
Seat cushion height adjustment
Side bolster adjustment
Lumbar support adjustment
Fore-aft adjustment

7-WAY ADJUSTABLE SPORT SEAT

Choice Comforts

Generous room provides comfortable 3-across seating. You can choose the 7-way adjustable driver's Sport Seat with lumbar support in SR5 models. The new instrument panel with easy-to-reach controls and easy-to-read instruments, including a digital quartz clock, makes driving convenient and comfortable.

Shown with optional equipment. See Features chart for details.



REMOVABLE CARGO SHELF



AM/FM/MPX STEREO TUNER WITH CASSETTE AND GRAPHIC EQUALIZER



TILT STEERING WHEEL



POWER WINDOWS

POWER ANTENNA



CRUISE CONTROL

Power Package

A Power Package option with power antenna, tilt wheel, Cruise Control and power windows is available for ultimate convenience. Choose an electronic AM/FM/MPX stereo tuner with cassette and graphic equalizer for concert-quality sound.



4-SPEED AUTOMATIC OVERDRIVE TRANSMISSION

Xtra Features

New Xtracab models have an extra-roomy storage area with removable cargo shelf behind the front seats. Outside, there is a rear deck lamp to illuminate cargo for convenient loading and unloading. For extra convenience, a rear window defogger is part of the optional Power Package for SR5 Xtracab models.



REAR DECK LAMP

ETCHED XTRACAB LOGO

More With Four

Toyota's innovative 4-speed automatic overdrive transmission features a convenient overdrive lock-out switch on the selector lever. This transmission provides driving ease with the "pass-saving" efficiency of overdrive for reduced engine wear and tear, quicker operation and improved overall performance.



*See EPA mileage statement on specifications page.

AUTOMATIC



4X4 SR5 XTRACAB SPORT TRUCK

TOYOTA 4x4s. ARRIVAL OF THE FITTEST

A new generation of Toyota 4x4s has arrived to keep on going where the road doesn't.

All gas models have a gutsy, high-torque 24 liter SOHC engine. You can depend on outstanding fuel economy* and a 19-plus-gallon fuel tank on most models for a 556-mile cruising range.

Their proven Toyota 4-wheel drive system—with automatic locking front hubs on the SR5 Xtracab—helps pull you through mud, snow or sand.

Rock-dodging running ground clearance—the highest of any small truck—moves you up and over almost anything, and the staggered-mount near-shock absorbers help improve stability and handling on or off the road.

The 4x4 Xtracabs give you roominess and conveniences you never thought possible in a small truck.

There's true comfort with the most leg room of any truck of its size, a removable cargo shelf behind the seats to keep everything from tool boxes to tackle boxes within easy reach, plus plush carpeting, color-coordinated door trim, reclining bucket seats, adjustable headrests and full console.

The SR5's full array of instruments lets you monitor engine systems at a glance, day or night. The SR5 provides exciting sounds from an AM/FM/MPX stereo radio, and for added driving

ease, power steering with tilt wheel is standard.

You can also choose from a wide variety of quality options to suit your individual driving style.

SR5 Xtracab Sport and Deluxe Xtracab 4x4 Trucks. The trucks with guts have arrived!

*See EPA mileage statement on specifications page. Shown with optional equipment. See Features chart for details.

GUTTS!





4x4 SR5 LONG BED SPORT TRUCK AND LAND CRUISER WAGON

RUGGED

**TAKE ON THE TASKS
WHEREVER THEY ARE**

There's no better way of taking on tough terrain than by teaming up with a high-stepping Toyota 4x4—an SR5. Deluxe or Toyota's most affordable 4x4, the Standard Bed (at right).

These totally new trucks come equipped with everything you need for work or play, on or off the road.

There's plenty of muscle in that hefty high-torque 24 liter SOHC engine. A fuel-saving* 5-speed overdrive transmission helps keep an eye on the bottom line. Power-assisted front disc/rear drum brakes provide confident stopping power.

You get staggered-mount rear shock absorbers for a stable ride, forged steel front tow hook, all-weather steel-belted radial tires with a big footprint, heavy-duty steel skid plates, and free-running front hubs to put that 4x4 power down fast.

Toyota 4x4 SR5 models give you plenty of features, with power steering, tilt steering wheel, full instrumentation, reclining low-back bucket seats with adjustable headrests, and concert-quality sound from an AM/FM/MPX stereo receiver—all standard.

And, of course, with the new generation of Toyota Trucks you get renowned Toyota quality, through and through. And for on-road or no-road driving with extra seating capacity, there's the legendary 4-wheel drive Land

Cruiser** the all-weather 5-passenger family wagon that's off-road tough. Like the 4x4 Toyota Trucks, Land Cruiser has what it takes to tackle the tough tasks.

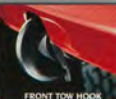
Toyota 4-wheel drive gets you there, and back, better than ever.

*See EPA mileage statement on specifications page.
**Not available in California.
Shown with optional equipment. See Features chart for details.



Tough & Ready

You've got plenty of torque and pulling power to haul heavy loads, plus ample space to carry a variety of cargo. All Toyota 4x4 Trucks have a convenient forged front tow hook. Tie-down hooks are located inside the cargo bed.



FRONT TOW HOOK



INTERIOR TIE-DOWN HOOKS

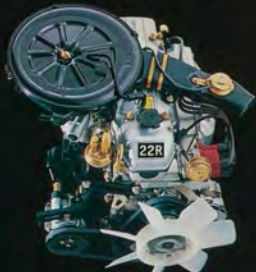


4WD GEARSHIFT

1-SPEED OVERDRIVE TRANSMISSION



MUD AND SNOW RADIAL TIRES



2.4 LITER SOHC ENGINE

Toyota Tough

There's nothing like 4-wheel drive power and traction, where and when you need it. The smooth 5-speed overdrive transmission combined with the husky 2.4 liter SOHC engine supplies plenty of full-range power. 4x4 SR5 Xtracabs have automatic locking front hubs that can be engaged or disengaged from inside the cab, and sure-footed, all-weather mud and snow steel-belted radials.



4x4 SR5 LONG BED SPORT TRUCK

Shown with optional equipment. See Features chart for details.



HIGH GROUND CLEARANCE



STEEL SKID PLATES

Off-Road Ready

Standard off-road equipment includes steel skid plates for fuel tank and transfer case and fully enclosed front drive axles. Toyota's high-stepping ground clearance—the highest running ground clearance of any small 4x4—lets you move up and over the rough spots.



4x4 XTRACAB DELUXE TRUCK



The Champs™

Toyota's tough trucks win on the road and at the races. They won Class 7 off-road racing honors over all trucks in the 1983 Manufacturers' Challenge Cup series.

TOUGH



3/4 TON TRUCK



**BUILT TOUGH,
BUILT RIGHT FOR THE
BIG JOBS**

There are no jobs too tough for Toyota's number one payload, the 3/4 Ton Truck. It's built tough and built right with all the features you need for on-the-job reliability.

Its powerful-but-thrifty*24 liter SOHC engine, teamed up with a 5-

speed overdrive transmission, gives you performance to tackle any job, day in, day out.

The 3/4 Ton can carry an 1800 lb. payload** and its versatile 7-foot bed, with rugged double-wall construction and a one-touch tailgate release for loading ease, lets you handle just about any size cargo.

We built this one to be a money-wise working partner. For reduced maintenance and less downtime, it has a 10,000-mile oil change interval

—longest in the industry. It's standard-equipped with a full-box frame, heavy-duty rear springs and rear axle, vented front disc and rear drum braking system, and a special heavy-gauge steel floor in the cargo bed.

A rear load-sensing proportioning valve automatically adjusts front and rear braking forces to compensate for load weights ranging from empty bed to full load capacity.

There's a larger, more comfortable cab for 1984 with full 3-across tilt-forward bench seat, easy-to-read instru-

ments and easy-to-reach controls. The power-boosted Flo-thru ventilation system lets you shut out dust and noise.

The 1984 Toyota 3/4 Ton may well be one of the best truck-buying decisions you'll ever make.

*See EPA mileage statement on specifications page.

**Including occupants, equipment and cargo. Shown with optional equipment. See Features chart for details.

PAYLOAD



COMMERCIAL CAB/CHASSIS

SPECIAL

CAB/CHASSIS, READY FOR YOUR SPECIAL PURPOSE BODY

Toyota Commercial Cab/Chassis units are designed to meet your needs for specialized body applications. They're ideal for fleet and one-truck operators alike.

Newly styled for more comfort and better visibility they can handle virtually any special-purpose body: utility, custom delivery, flat or stake-bed. Heavy-duty suspension, heavy-duty rear axle components and 750 x 14 tires give Toyota Cab/Chassis units a GVW rating of 4825 lbs.

And because they're designed for reduced maintenance, you can look forward to minimum downtime with

a Commercial Cab/Chassis on the job. When it's time to get away from it all, you can go with comfort and confidence in the Camper Cab/Chassis. Here's solid, heavy-duty quality to carry your camper body or motorhome.

Both Commercial and Camper units are powered by a muscular 24 liter SOHC engine. There's a smooth-shifting 4-speed transmission that helps mind your mileage*. Standard, too, are power-assisted brakes, with vented discs up front.

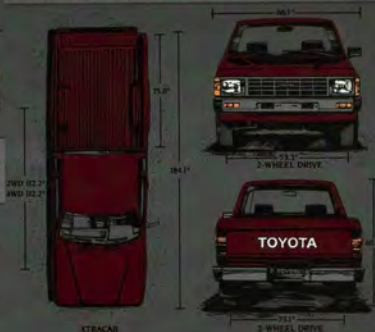
Inside both units there's an easy-to-read instrument panel, easy-care upholstery and a power-boosted Flo-Thru ventilation system for added comfort. Optional air conditioning can be added to either unit. And on Camper models there are also side-vent windows, and the special convenience of a tilt steering wheel.

*See EPA mileage statement on specifications page. Shown with optional equipment. See Features chart for details.

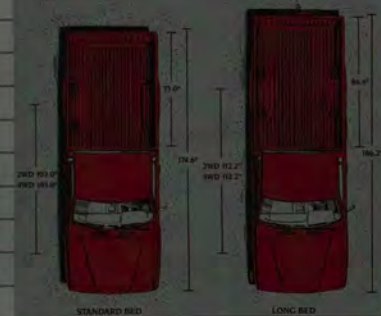




Super Style
All-new Toyota Trucks feature advanced aerodynamic styling which helps reduce wind resistance and helps improve fuel economy*
*See EPA mileage statement on specification page.



Choose your Size
Toyota Trucks offer 6-foot or 7-foot cargo beds, expanded interior room and larger glass area. New Xtracabs provide exceptional interior room without sacrificing bed length.



Built to Last

New Toyota Trucks feature a full-box frame design, most models have sturdy double-wall construction and interior tie-down hooks. New 24x4s have the highest running ground clearance of any comparable truck.

SPECIFICATIONS

	2WD SRS (GASOLINE)	2WD 6-444 (GASOLINE)	2WD 6-444 (DIESEL)	4x4 (GASOLINE)	4x4 (LAND CRUISER)
ENGINE TYPE	4-cylinder SOHC, EFI	4-cylinder SOHC	4-cylinder SOHC, diesel	4-cylinder SOHC	6-cylinder Diesel
DISPLACEMENT (cu. in.)	2.4 liter (146.0 cc)	2.4 liter (146.0 cc)	2.4 liter (146.0 cc)	2.4 liter (146.0 cc)	4.2 liter (257.0 cc)
HORSEPOWER (SAE NET)	106 @ 4000 rpm	100 @ 4000 rpm (Std.) 106 @ 4000 rpm (Cali. & all C/C)	75 @ 4000 rpm (Std.) 79 @ 4000 rpm (Cali.)	100 @ 4000 rpm (Std.) 96 @ 4000 rpm (Cali.)	175 @ 3600 rpm
TORQUE (SAE NET)	117 lb-ft @ 2800 rpm	110 lb-ft @ 2800 rpm (Std.) 120 lb-ft @ 2800 rpm (Cali.)	114 lb-ft @ 1400 rpm (Std.) 128 lb-ft @ 1400 rpm (Cali.)	130 @ 4000 rpm (Std.) 124 lb-ft @ 2800 rpm (Cali.)	200 lb-ft @ 1800 rpm
BODY FRAME CONSTRUCTION	Welded steel cab			Stainless body and frame	
SUSPENSION FRONT	Torsion bar with hydraulic shock absorbers, stabilizer bar on gasoline and 4x4 diesel models				
SUSPENSION REAR	Leaf springs with staggered hydraulic shock absorbers (heavy-duty axle and rear springs on 3/4-Ton and Cab/Chassis, full-size suspension on Deluxe and S&S Super Models)				
STEERING TYPE	Recirculating ball				
TURNING CIRCLE DIAMETER	14.8 ft. Standard Bed, 17.4 ft. Long Bed				
BRAKES	Power-assisted ventilated front disc-rear drum (with rear load-sensing proportioning valve on 3/4-Ton and Cab/Chassis)			Power-assisted front disc-rear drum with rear load-sensing proportioning valve	

	SRS Xtracab	Log. Bd. S&S	SRS Xtracab	Log. Bd. Deluxe	Log. Bd. Deluxe	Standard	4x4 SRS Xtracab	4x4 Log. Bd. S&S	4x4 SRS Xtracab	4x4 Log. Bd. Deluxe	4x4 Diesel (Cali.)	3/4-Ton	Comper & Commercial Cab/Chassis	4x4 Land Cruiser Wagon*
EXTERIOR DIMENSIONS (inches)														
Wheelbase	112.2	112.2	107.0	112.2	112.2	107.0	112.2	112.2	107.0	112.2	112.2	112.2	112.2	107.5
Front wheel offset	11.3	11.3	11.3	11.3	11.3	11.3	11.3	11.3	11.3	11.3	11.3	11.3	11.3	11.3
Rear wheel offset	11.1	11.1	11.1	11.1	11.1	11.1	11.1	11.1	11.1	11.1	11.1	11.1	11.1	11.1
Overall length	184.1	184.2	174.6	184.1	184.2	184.2	174.6	184.1	184.2	184.2	184.2	184.2	184.2	184.1
Overall width	66.1	63.8	66.1	66.1	63.8	66.1	63.8	66.1	66.1	66.1	66.1	66.1	66.1	63.9
Overall height	60.2	60.4	60.4	60.2	60.4	60.4	60.2	60.4	60.4	60.4	60.4	60.4	60.4	62.2
Bed length	73.0	86.4	73.0	73.0	86.4	86.4	73.0	86.4	73.0	73.0	86.4	86.4	86.4	86.4
INTERIOR DIMENSIONS (inches)														
Head room	38.3	38.1	36.1	38.5	38.1	36.1	38.1	38.5	38.1	38.1	38.5	38.1	38.1	38.1
Leg room	43.7	41.5	41.5	43.7	41.5	41.5	43.7	41.5	41.5	41.5	41.5	41.5	41.5	41.5
ABLE RATIOS														
Front	N/A	N/A	N/A	N/A	N/A	N/A	4.001	4.001	4.001	4.001	4.001	N/A	N/A	3.700
Rear	1.583	1.583	1.583	1.727	1.727	1.583	4.001	4.001	4.001	4.001	4.001	3.723	4.001	1.500
2-SPEED TRANSFER CASE														
Low ratio							High 1.000	Low 2.277	High 1.000	Low 2.277	High 1.000	Low 2.277	High 1.000	Low 2.277
GROUND CLEARANCE														
Angle of approach	29°	29°	29°	29°	31°29'	29°	31°	29°	29°	29°	29°	29°	29°	32°
Angle of departure	14°	14°	14°	14°	16°51'48"	14°	16°51'	29°	29°	29°	29°	29°	29°	20°
Differential system in ground	6.9"	6.9"	6.9"	6.9"	3.758.9"	6.9"	7.9"	7.9"	7.9"	7.9"	7.9"	7.9"	7.9"	7.9"
Minimum running ground clearance	6.7"	6.7"	6.7"	6.7"	3.758.9"	6.7"	7.9"	10.0"	10.0"	10.0"	10.0"	10.0"	10.0"	9.8"
CAPACITIES														
Gross vehicle weight (lb.)	4800	4800	4800	4800	4800	4800	4800	4800	4800	4800	5080	4820	4820	5140
Payload (lb.)	1800	1800	1800	1800	1800	1800	1800	1800	1800	1800	1800	1800	1800	N/A
Fuel tank capacity (gallons)	17.2	17.2	19.7	17.2	17.2	17.2	19.7	19.2	19.2	17.2	19.2	19.2	17.2	17.2
TIRES														
Type	SRS Steel belted radial MacSteel P195/75R14	Deluxe Steel belted radial MacSteel ERT344	Deluxe Heavy Duty MacSteel T0044	4x4 Mud & snow steel belted radial MacSteel H0744	3/4-Ton and C/C Bias-ply MacSteel T3044	Mud & snow MacSteel H0744								
Size														

TRUCK EXTERIOR COLORS (INTERIOR COLORS)	LAND CRUISER EXTERIOR COLORS (INTERIOR COLORS)
<p>Solid</p> <ul style="list-style-type: none"> White (Gray or Blue) White (Brown) Red (Brown) <p>Wine Red (Brown)</p> <ul style="list-style-type: none"> Medium Blue (Blue) <p>Cannon (Brown)</p> <ul style="list-style-type: none"> Clare (Black) (Gray) <p>Solid</p> <ul style="list-style-type: none"> Silver (Gray) Dark Gray (Gray) Dark Blue (Blue) <p>Optional Two-Tone</p> <ul style="list-style-type: none"> White/Silver (Gray or Blue) Medium Blue/White (Gray or Blue) White/Dark Gray (Gray) 	<p>Solid</p> <ul style="list-style-type: none"> White (Dark Brown) Red (Dark Brown) <p>Beige (Dark Brown)</p> <ul style="list-style-type: none"> Medium Blue (Gray) <p>Metallic</p> <ul style="list-style-type: none"> Copper (Brown (Dark Brown)) Blue (Gray)

N/A - Not applicable - *Not available in California. **Not available. †Including occupants, equipment and cargo. *Some colors not available on all models. †Optional. Toyota 4WD Trucks are designed to meet off-road driving requirements. Abuse may result in body frame or damage. We encourage responsible operation to protect you, your vehicle and the environment.

MILEAGE ESTIMATES*	2-WHEEL DRIVE						4-WHEEL DRIVE					
	Gasoline		4-speed Auto	4-speed Auto	Gasoline EFI 4-speed Auto		Diesel	Cab/Chassis Gasoline		Gasoline	Diesel	4-speed
49 State EPA EST MPG/HWY MPG	29-31	29-31	29-27	29-31	29-30	29-34	29-34	29-31	29-31	29-29	29-34	29-31
California EPA EST MPG/HWY MPG	29-31	29-31	29-26	29-31	29-30	29-34	29-34	29-31	29-31	29-29	29-34	29-31

*Remember: Compare these mileage estimates to the EPA "Estimated MPG" of other trucks. You may get different mileage depending on how fast you drive, weather conditions and trip length. Actual highway mileage will probably be less than the "Highway Estimate." Specifications and equipment shown on information available at time of printing and are subject to change without notice. Specifications are for Mainland USA and may differ in other regions. Cover vehicle and other shown with optional equipment (see Features chart). For details on options, accessories and specifications, in print or on-line, contact your local Toyota Inc. 1984 Toyota Accounts Executive for additional Toyota-approved accessories.

SPECS

