

 **DODGE**

DODGE NITRO



DODGE NITRO SPECIFICATIONS

DODGE.COM.AU



INFERNO RED CRYSTAL PEARL

MODERN BLUE PEARL

LIGHT GREYSTONE PEARL

STONE WHITE

ELECTRIC BLUE PEARL

SUNBURST ORANGE PEARL

NITRO COLOURS & FABRICS

EXTERIOR COLOUR

Bright Silver Metallic
Brilliant Black Crystal Pearl
Electric Blue Pearl
Inferno Red Crystal Pearl
Light Greystone Pearl
Modern Blue Pearl
Stone White
Sunburst Orange Pearl

SX

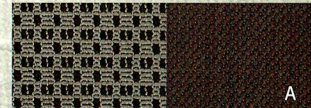
A
A,B
N/A
A,B
B
A,B
A,B
N/A

SXT

C
C,D
C
C,D
D
C,D
C,D
C,D



B Everest II/Wallace II cloth
Khaki Two-Tone



A Everest II/Wallace II cloth
Slate Grey Two-Tone



E Royale Radar Leather Trim/Sutton Vinyl
Slate Grey Two-Tone



F Royale Radar Leather Trim/Sutton Vinyl
Khaki Two-Tone



WHEELS

20-inch aluminium platinum-clad wheel
(standard on SXT and selected SX models.
See dealer for availability)



NITRO SX

IN BRIGHT SILVER METALLIC

SHOWN WITH GREY FACIAS & FLARES. SEE DEALER FOR COLOUR-KEYED LATE AVAILABILITY

NITRO SXT

IN BRILLIANT BLACK CRYSTAL PEARL

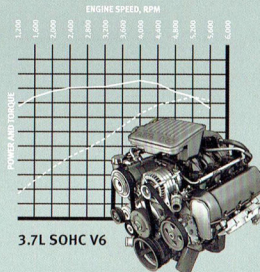
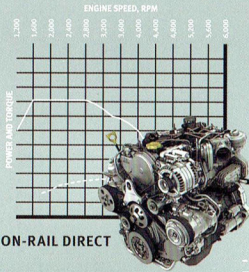
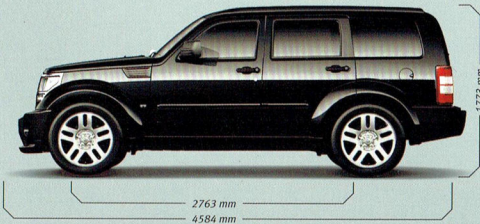
NITRO SX

All Nitro SX models include these features: Standard 3.7L SOHC V6 with four-speed automatic transmission, optional 2.8L DOHC I-4 Common-Rail Direct with five-speed automatic transmission, Dark Slate Grey front/rear fascias and fender flares, black bodyside mouldings, foglamps, chrome grille, 20-inch wheels with performance suspension, two-tone cloth seats, with YES Essentials® Seat Fabric, forward fold-flat front-passenger and rear seats, 65/35 rear split-folding reclining seats, four-wheel disc brakes with ABS, Electronic Stability Program with all-speed traction control, Brake Assist and Electronic Roll Mitigation, Next Generation multistage front air bags, supplemental side-curtain air bags, Tyre Pressure Monitoring warning light, independent front/five-link solid rear axle suspensions, Sentry Key® power exterior mirrors/windows/locks and ParkSense® rear park assist system.

NITRO SXT

SXT includes the standard features of the SX trim level except where additions are noted: standard body-colour front/rear fascias, fender flares and bodyside mouldings, two-tone seats with Royale Leather seat Fabric, two-tone interior trim with bright bezels, LOAD 'N GO™ slide-out rear cargo floor, heated power exterior mirrors, Electronic Vehicle Information Center (EVIC), steering wheel-mounted audio controls, overhead console, auto-dimming rearview mirror, power six-way driver seat, Tyre Pressure Monitoring display.

NITRO SPECIFICATIONS



MEASUREMENTS AND WEIGHTS	SX	SXT
Tyre Sizes	P245/50R20	P245/50R20
Wheelbase	2763	
Overall length	4584	
Overall height/with roof rack	1755/1773	
Overall width/with side steps	1856/1916	
Track – Front/Rear	1549/1549	
Cargo load floor height	840	
Approach angle (degrees)*	17.0	
Breakover angle (degrees)*	20.0	
Departure angle (degrees)*	34.0	
Ground Clearance – Front/Rear*	220 / 210	
Water Fording*	482.6 mm @ 8 kph	
Front row		
– Head room	1025	
– Leg room	1036	
– Shoulder room	1443	
– Hip room	1338	
Second row		
– Head room	1019	
– Leg room	984	
– Shoulder room	1436	
– Hip room	1229	
Cargo Volume (L)		
– Rear seat up (top of head rests)	397	
– Rear seat up to headliner	832	
– Rear seat down to headliner	1994	
Towing Capacity (kg)		
– braked with weight distributing hitch	2270	
– braked without weight distributing hitch	1600	
– Tongue weight with device	227	
– Tongue weight without device	160	
	2.8L CRD TURBO DIESEL	3.7L V6 ENGINE
Base kerb weight (kg)		
– SX	1940	1875
– SXT	1995	1970
Gross Vehicle Weight Rating (GVWR) (kg)	2520	2540

*3.7L V6 specifications.

Note: All dimensions in millimetres unless otherwise noted.

NITRO SPECIFICATIONS

POWERTRAINS	3.7L V6	2.8L CRD
Type	90° SOHC V6	DOHC I-4
SX and SXT	Standard	Optional
ENGINES		
— Displacement (cc)	3700	2768
— Bore and Stroke	93 x 90.8	94 x 100mm
— Compression Ratio	9.7:1	17.5:1
— DOHC/SOHC	Chain-driven SOHC 12 Valves and Cam	Belt-driven DOHC 16 Valves and Cam
— Fuel Delivery System	Sequential, multiport, returnless electronic	Generation III common-rail direct electronic (1600 bar)
— Maximum Engine Speed (rpm)	6,000	4,300
— kW @ rpm	151 @ 5,200	130 @ 3,800
— Torque Nm @ rpm	314 @ 4,000	460 @ 2,000
— Standard transmission	4-speed automatic with Variable Line Pressure (VLP)	5-speed automatic
Transfer case — Standard		MP143
Fuel tank capacity litres	73.8L	70L
Steering type		Rack-and-Pinion
Turning diameter metres kerb-to-kerb		11.1
Wheels — Standard (diameter x width) SX and SXT		20x7.5
RATIOS		
Axle Ratio	3.73	3.21
Gear Ratio — 1st	2.84	3.59
— 2nd	1.57	2.19
— 3rd	1.00	1.41
— 4th	0.69	1.00
— 5th	—	0.83
— Reverse	2.21	3.16
— Final Drive	2.57	2.66



FEATURES & OPTIONS

	SX	SXT
Air Bags* — Next Generation multistage front air bags	•	•
— Supplemental side-curtain air bags with roll sensing technology	•	•
Air Conditioning		
— Manual temperature control	•	
— Single automatic temperature control		•
Axle — Front, 30/186 mm	•	•
Axle Ratio — 3.21:1 (included with 2.8L CRD)	P	P
— 3.73:1 (included with 4-speed automatic)	•	•
Battery — 600-amp, maintenance-free with Battery-Saver Feature (included with 3.7L V6) 800-amp (2.8L CRD)	P	P
Brake-Park Interlock — Cannot shift out of Park unless brake pedal is applied (automatic transmission)	P	P
Brake System — 4-wheel disc brakes with ABS	•	•
Child Seat Anchor System (ISOFIX/LATCH) — Lower child seat anchors and upper tether anchors help ease the installation of compatible aftermarket child seats	•	•
Console — Full-length floor console includes removable cup holders, padded armrest and covered storage bin with CD storage	•	•
Defroster — Rear window	•	•
Cruise Control	•	•
Door Locks — Child-protection rear	•	•
Door Trim Panel		
— Monotone	•	
— Two-tone		•
Electronic Stability Programme* — ESP (includes All-speed traction control, Brake Assist & ERM)	•	•
Electronic Vehicle Information Centre (EVIC)	•	•
Fascias — Front and rear, Dark Slate Grey	•	
— Front and rear, body-colour		•
Fender Flares		
— Dark Slate Grey	•	
— Body-colour		•
Floor Mats — Front and rear	•	•
Fog Lamps — 2 integrated in front fascia	•	•

• = Included. P = Available within package noted. O = Optional.

FEATURES & OPTIONS

	SX	SXT
Fuel Tank — 70 litres (2.8L CRD) 73.8 litres (3.7LV6)	•	•
Glass — Deep-tint sunscreen side and rear	•	•
— Solar-Control	•	•
— Tinted windshield	•	•
Grille — Bright front	•	•
Heat Outlets — Rear-seat floor-mounted	•	•
Illuminated Entry	•	•
Instrument Cluster — Speedometer, tachometer, oil temperature and fuel gauge	•	
— Speedometer, tachometer, oil temperature and fuel gauge with display screen		•
Instrument Panel		
— Monotone	•	
— 2-tone		•
Licence Plate Brow		
— Black	•	
— Bright		•
Lighting (Exterior)		
— Halogen headlights	•	•
Lighting (Interior)		
— Map/dome reading	•	•
— Courtesy	•	•
— Rear dome light	•	•
Locks — Speed-sensitive power	•	•
Mirrors (Exterior)		
— Dual heated power foldaway	•	•
Mirrors (Interior)		
— Rearview day/night	•	
— Rearview auto-dimming		•
Moulding — Black bodyside	•	
— Body-colour bodyside		•
ParkSense® — Rear Park Assist†	•	•
Power Accessory		
— Instrument panel 12-volt auxiliary	•	•
— Rear cargo area 12-volt auxiliary	•	•

	SX	SXT
Premium Security Alarm — Integrated vehicle alarm system (included with Leather Group)		P
Radio — AM/FM stereo radio and integrated 6-disc CD changer with MP3/DVD capability and auxillary audio jack	•	•
— MyGIG™ Multimedia Infotainment System includes AM/FM stereo radio and Satellite Navigation Global Positioning System with MP3/DVD capability and 20GB HDD		O
Rear Cargo		
— 6 tie-downs	•	•
— LOAD 'N GO™ slide-out system		•
Rear Cargo Cover	•	•
Remote Audio Controls		•
Remote Keyless Entry — With an integrated ignition key	•	•
Rocker Sills — Black	•	•
Roof Side Rails — Black	•	•
Running Boards — Black		O
Seat Belts — height-adjustable turning loops, rear with 3-point shoulder belts at all 3 seating positions	•	•
Seats — Front-passenger forward fold-flat	•	•
— Low-back cloth bucket	•	
— Low-back leather-trimmed heated/ bucket seats (included with Luxury Group)		•
— Manually adjustable	•	
— Power 6-way driver's		•
— Rear 65/35 split folding with recline		•
Security Alarm — Integrated vehicle alarm system	•	•
Senry Key® — Anti theft engine immobiliser	•	•
Smoker's Group — Removable ashtray and cigarette lighter	•	•
Speakers — 6 total	•	•
— 9 Infinity® amplified speakers including subwoofer		P
Steering Wheel — 4-spoke	•	•
— Leather-wrapped 4-spoke		•

	SX	SXT
Sunroof — Power with vent, tilt and slide feature, one-touch operation		O
Suspension — Performance	•	•
Tilt Steering	•	•
Transfer Case — Part-time 4WD system	•	•
Tyre Pressure Monitoring Warning Lamp	•	
Tyre Pressure Monitoring Display		•
Tyres — 245/50R20 black sidewall, all-season	•	•
— Spare, full-size steel wheel	•	•
Wheels — 20" x 7.5" Platinum-clad alloy wheel	•	•
Windows — Power, front, 1-touch up and down	•	•
Windshield Wipers		
— Front variable intermittent	•	•
— Rear wiper/washer	•	•

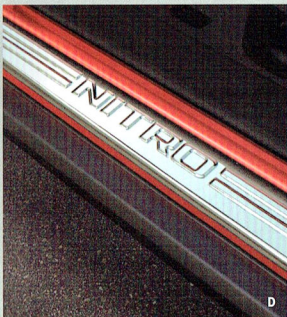
PACKAGES

Infotainment Group — MyGIG™ Multimedia Infotainment System, 9 Infinity amplified speakers including subwoofer, Rear seat video system including wireless headphones		O
Premium Group — Includes leather-trimmed, heated front bucket seats and premium security alarm system		•



* Always sit properly in the seat with the seat belt fastened. † Always drive carefully, consistent with conditions. Always wear your seat belt and obey traffic laws.

• = Included. P = Available within package noted. O = Optional.



GENUINE DODGE ACCESSORIES: MAKE NITRO YOUR OWN

A. ROOF-MOUNT BIKE CARRIERS. Bike Carriers feature extra-large rubber inserts to help protect bike surfaces. **FORK-MOUNT** style carries one bike securely by the front fork and rear wheel. The **UPRIGHT-MOUNT** style carries one bike locked by the frame with both wheels secured. Designed for use with Sport Utility Bars (sold separately).

B. MOULDED RUNNING BOARDS. For a step up in stylish convenience, our Moulded Running Boards are constructed of heavy-gauge steel for safe and easy entry and exit, and feature a Black moulded-grain plastic outer cover for the finishing touch.

C. 20-INCH WHEELS. Nothing makes a statement like massive wheels, and these 20-inch Cast-Aluminium Wheels are no exception. Designed specifically for the Dodge Nitro, they fit the vehicle without any need for modification.

D. DOOR SILL GUARDS. Brighten up your doors with some stylish protection. Guards protect your door sills and are available in stainless steel with embossed Nitro logo. Available as a set of four, for front and rear.

E. CHROME FRONT AIR DEFLECTOR. Deflect road spray, dirt and bugs up and away from your Nitro's bonnet and windshield with this easily installed accessory.

F. ROOF TOP CARGO BASKET.* This cargo basket features high sides to help secure your cargo and a front air deflector complete with the Dodge logo. Basket mounts to Sport Utility Bars (sold separately). **ROOF BASKET CARGO NET** secures to the roof basket for added security (sold separately).

*Always check entire surroundings before backing up. †Properly secure all cargo.



GENUINE
DODGE
ACCESSORIES
BY MOPAR

About this catalogue: Since the time of printing, some of the information you'll find in this catalogue may have been updated. Ask your dealer for details. Some of the equipment shown or described throughout this catalogue is available at extra cost. Specifications, descriptions, illustrative materials, and all competitive comparisons contained herein are as accurate as known at the time this publication was approved for printing. Chrysler LLC reserves the right to discontinue models at any time or change specifications without notice or without incurring obligation. All options are required in combination with other options. For the price of the model with the equipment you desire, or verification of specifications contained here, see your Dodge dealer. Dodge, UConnect, Sentry Key and VES are registered trademarks of Chrysler LLC. LOAD 'N GO and MyGIG are trademarks of Chrysler LLC. YES Essentials is a registered trademark of Milliken & Company. ∞Infinity is a registered trademark of Harman International Industries, Inc. All other trademarks, service marks and logos are the property of their respective owners.

Printed in Australia SBKA2008 05/08



DODGE

dodge.com.au