

THE NEW  
**2008 F-SERIES SUPER DUTY®**



**BUILT**  
*Ford*  
**TOUGH**



# THE NEW 2008 F-SERIES SUPER DUTY: **TOUGH** LEADS THE WAY



## Canada's Most Capable Pickup\*

Once again, a new F-Series Super Duty redefines the full-size pickup. Its all-new 6.4L Power Stroke® Turbo Diesel blends massive power with clean, quiet operation. Tough meets refinement in muscular new sheet metal and a spectacular new interior. Plus, exclusive features make hard work easier. In the new Super Duty, there is no compromise between capability and comfort. One more reason that F-Series are Canada's best-selling line of pickups for 40 years\*\* in a row.

\*Best-in-class payload and towing, GVWR and GCWR when properly equipped. Class is Full-size Pickups over 8500 lbs. (3856 kg) and up to 16,000 lbs. (7257 kg) GVWR. \*\*Based on Canadian Vehicle Manufacturers' Association statistical sales report, December 2005.

- |                        |                            |                          |
|------------------------|----------------------------|--------------------------|
| 3 CAPABILITIES         | 11 CLEAN DIESEL TECHNOLOGY |                          |
| 5 INNOVATIONS          | 13 CHASSIS ENGINEERING     | 19 LARIAT                |
| 7 ALL-NEW INTERIOR     | 15 F-250/F-350/F-450       | 21 XLT SPORT/KING RANCH® |
| 9 ALL-NEW POWER STROKE | 17 XL/XLT/FX4 OFF-ROAD     | 23 SPECIFICATIONS        |

LEFT: F-350 FX4 Crew Cab in Black    CENTRE: F-450 LARIAT Crew Cab 4x4 in Black    RIGHT: F-250 XLT SPORT Crew Cab 4x4 in Red  
 Vehicles throughout this catalogue may be shown with optional and aftermarket equipment.



# MOVE MOUNTAINS 24,500<sup>LBS.\*</sup> AT A TIME

F-Series Super Duty® pickups allow you to effortlessly haul the biggest payloads and tow the heaviest trailers, while maintaining optimum control. Here's the pickup that gets the job done no matter the location or conditions. When the toughest jobs call, Super Duty answers.



F-450 LARIAT Crew Cab 4x4 in Black with available equipment.

**MAXIMUM  
TOWING**

**BEST-IN-CLASS**

CONVENTIONAL: LBS. (KG)	5TH-WHEEL: LBS. (KG)
F-450 16,000 (7257)	F-450 24,500 (11,113)
F-350 15,000 (6804)	F-350 18,700 (8482)

\*11,113 kg. Maximum capability when properly equipped. See your Ford of Canada Dealer for specific equipment requirements and other limitations.

Every Super Duty pickup has a standard Built Ford Tough® Hitch Receiver that is matched to the truck's capabilities.

Drawbar and accessories not included.



## TowCommand

This optional factory-installed system features an integrated trailer brake controller (TBC) (left), and incorporates ABS braking, TorqShift® 5-speed automatic (top) with Tow/Haul Mode, and telescoping trailer tow mirrors. When activated, this system provides confidence and control. For 2008, the performance of the integrated TBC has been enhanced, enabling stronger trailer brake activation during anti-lock braking. A redesigned, user-friendly display indicates output and gain levels, trailer connection status, and has a disconnect alarm with message centre warnings.





# BREAKING **NEW** GROUND

From the first factory-developed trailer brake controller, to the newest features of 2008, Ford is well known for listening to our customers and delivering useful innovations that you won't find on any other heavy-duty pickup. Plus, our long list of specialized options lets you order the Super Duty® that's just right for you.

## New Rapid-Heat Supplemental Cab Heater

This welcome innovation helps ward off winter chill. Available on diesel trucks with automatic transmission, it automatically helps to speed up defrosting and heat the cabin to a comfortable level.



## New PowerScope™ Trailer Tow Mirrors

These optional mirrors adjust, fold and telescope up to 70 mm (2.75 in.) at the touch of a switch. They include heated glass, integrated turn signals and clearance lamps.

## New Stowable Bed Extender

Fold it out, clamp it together and secure it to the tailgate with the bolt-action latch. This optional 533-mm (21-in.) tall barrier lets you haul with the tailgate down, or secure smaller loads with the tailgate up. Made of rugged fiberglass-filled polypropylene, it folds conveniently out of the way when not in use.



F-450 KING RANCH™ Crew Cab 4x4 in Forest Green with available equipment.

## Class-exclusive Tailgate Step

This all-new optional feature stows right in the tailgate. Just take hold of the flip-up grab bar, flip down the skid-resistant step, and climb up into the box.





# DRIVEN BY INNOVATION

A bold, new interior design is crafted of quality materials and filled with advanced features. A Quiet Steel® bulkhead and insulation in the roof pillars help make the cab exceptionally quiet. The new instrument panel, with a message centre and large centre stack, is clear and concise. Gear rings around the air vents, and stamped panels mark an industrial theme. Even with all these refinements, the style is unmistakably Super Duty.® Because a pickup this extraordinary deserves a cabin to match.

An optional DVD-BASED NAVIGATION SYSTEM can map routes anywhere in Canada\*, guide you with audible instructions, and includes the Audiophile® Sound System. The heating and air conditioning system is quiet, with balanced airflow for all-around comfort.

\*See your Ford of Canada Dealer for mapping details.  
Quiet Steel is a registered trademark of Material Sciences Corporation.



FX4 CREW CAB (above) features silver vents with chrome rings and other unique interior accents. Optional luxury captain's chairs with leather trim and contrasting stitching and optional equipment. U.S. model shown.

**A** NEW MP3 CAPABILITY AND AUXILIARY INPUT: Now, all CD audio systems are MP3-CD capable, and feature an auxiliary input jack for any compatible player.

**B** DVD ENTERTAINMENT SYSTEM: Available DVD, CD and MP3 system allows access to movies, games and music. Two sets of wireless headphones are included.

**C** Optional captain's chairs include a **CENTRE CONSOLE** that can hold a laptop. It has one power point inside, and on rear-seat models, one more on the back of the console.

The new standard SecuriLock® passive anti-theft ignition system allows the engine to start only with a properly coded ignition key. The available Advanced Security Group adds 4 security and convenience features including illuminated keyless entry.



Choose SIRIUS Satellite Radio\*\* for digital-quality news, sports, talk, entertainment and commercial-free music. Includes a 6-month subscription.

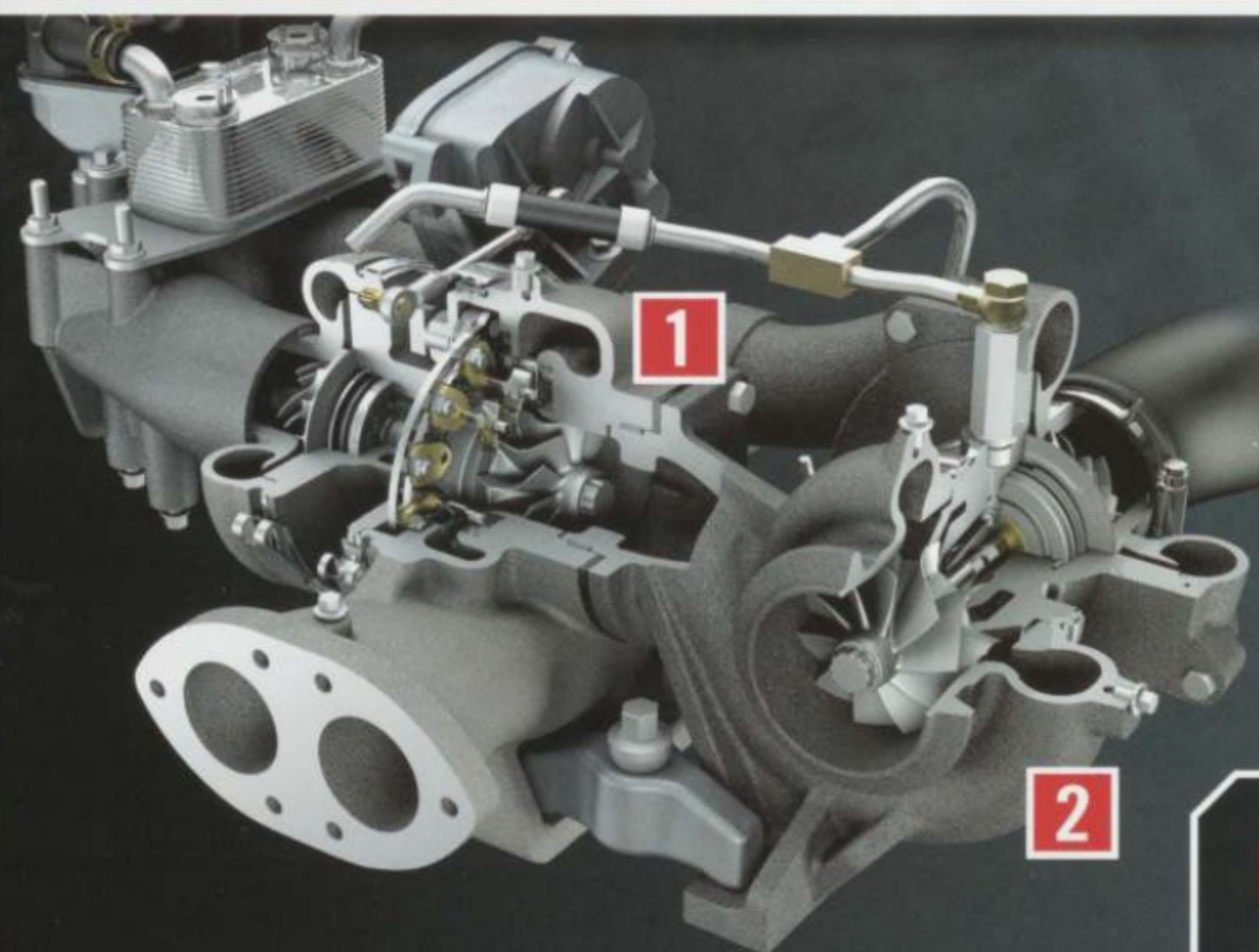
\*\*See your Ford of Canada Dealer or contact SIRIUS at 1-888-539-7474 for more information. "SIRIUS" and the SIRIUS dog logo are registered trademarks of SIRIUS Satellite Radio Inc.



# ALL-NEW POWER STROKE®

The all-new 6.4L Power Stroke V8 Turbo Diesel is the most powerful Ford diesel pickup engine ever offered, with 100% of its 650 lb.-ft. of torque available at just 2000 rpm.\* Cutting-edge fuel injection helps deliver optimal fuel efficiency and outstanding cold-start capability.

- 350 hp @ 3000 rpm and 650 lb.-ft. of Torque @ 2000 rpm\*
- High-Pressure Common-Rail Fuel Injection
- Micro-Precision Piezo-Electric Injectors
- Quick Cold Start at -29°C (-20°F)
- The Quietest Ford Diesel Pickup on the Road
- 16 Million Equivalent Kilometres of Testing
- 797 Component & System-Quality Tests



## NEW SEQUENTIAL TURBOS

The high-pressure **ELECTRONIC VARIABLE RESPONSE TURBO (EVRT®)** **1** spools up first to provide fast transient engine response. The larger **LOW-PRESSURE TURBO** **2** provides added airflow at peak power and torque.

\*Governed at 325 hp @ 3000 rpm and 600 lb.-ft. of torque @ 2000 rpm on F-450 with 6-speed manual, or on F-450 with automatic transmission and 4.88 rear axle.



### **A** Cast-Iron Block, Heads & Bedplate

This proven architecture stands up to the combustion forces of peak diesel operation, and helps dampen noise and vibration.

### **B** Bigger Crankshaft

The backbone of the engine, a strong, precise Power Stroke crank is designed to handle massive diesel horsepower and torque.

### **C** Powder-Forged Connecting Rods

This process delivers outstanding strength and dimensional accuracy for high durability and smooth performance.

### High-Capacity Oil Pump

This pump keeps 14.2 litres (15 quarts) of oil circulating for vital lubrication and piston cooling. The oil also carries away contaminants created by combustion.

### Heavy-Duty Alternators

A 135-amp alternator is standard with the Power Stroke. A 200-amp heavy-duty alternator, or dual alternators that pump out 320 amps are optional.

### Extended Maintenance

Oil changes are at 16,000 km (10,000 miles) and fuel filters are designed to last 32,000 km (20,000 miles) in normal service. The closed crankcase breather requires no service. See Owner's Guide for complete service details.



# FORD CLEAN DIESEL TECHNOLOGY™



This impressive combination of innovative technologies helps to reduce emissions to levels on par with equivalent gasoline engines.

## High-Pressure Common-Rail Fuel Injection

Fuel pressurized to 1930 bar (28,000 psi) travels through a common rail and into state-of-the-art piezo-electric injectors that deliver multiple precision fuel injections for a smoother, cleaner burn, reduced diesel clatter, superb cold-start capability and reduced emissions.

## Oil-Jet Piston Cooling

Cooling jets of oil spray inside the pistons to optimize ring life for long-term durability, and help reduce combustion temperatures to control emissions.

## Exhaust Gas Recirculation (EGR)

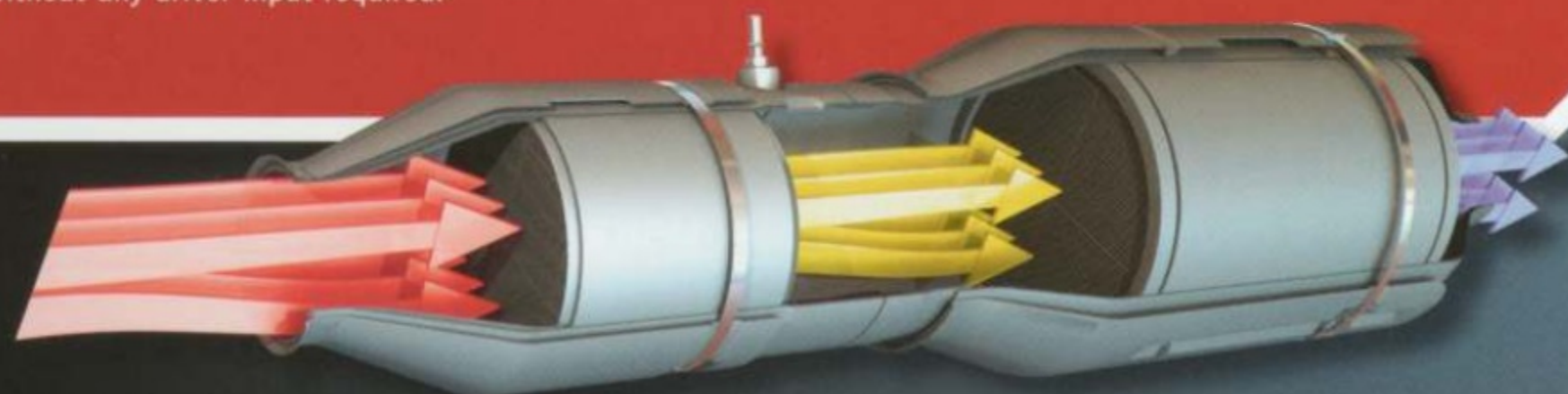
The EGR system pumps burned gases through 2 coolers to re-enter the air system at the **HIGH-TORQUE EGR VALVE**. These cooled gases, along with intercooled combustion air and oil-jet piston cooling, help lower combustion temperature. This helps inhibit the formation of nitrogen oxides (NOx).

## Ultra-Low-Sulfur Diesel Fuel (ULSD), B5 Fuel, & CJ-4 Engine Oil

The new Power Stroke® runs only on ULSD, the new standard for North American diesel fuel. It also supports B5, which is made by blending 95% ULSD with 5% BioDiesel. CJ-4 engine oil must be used for proper lubrication and emissions system operation.

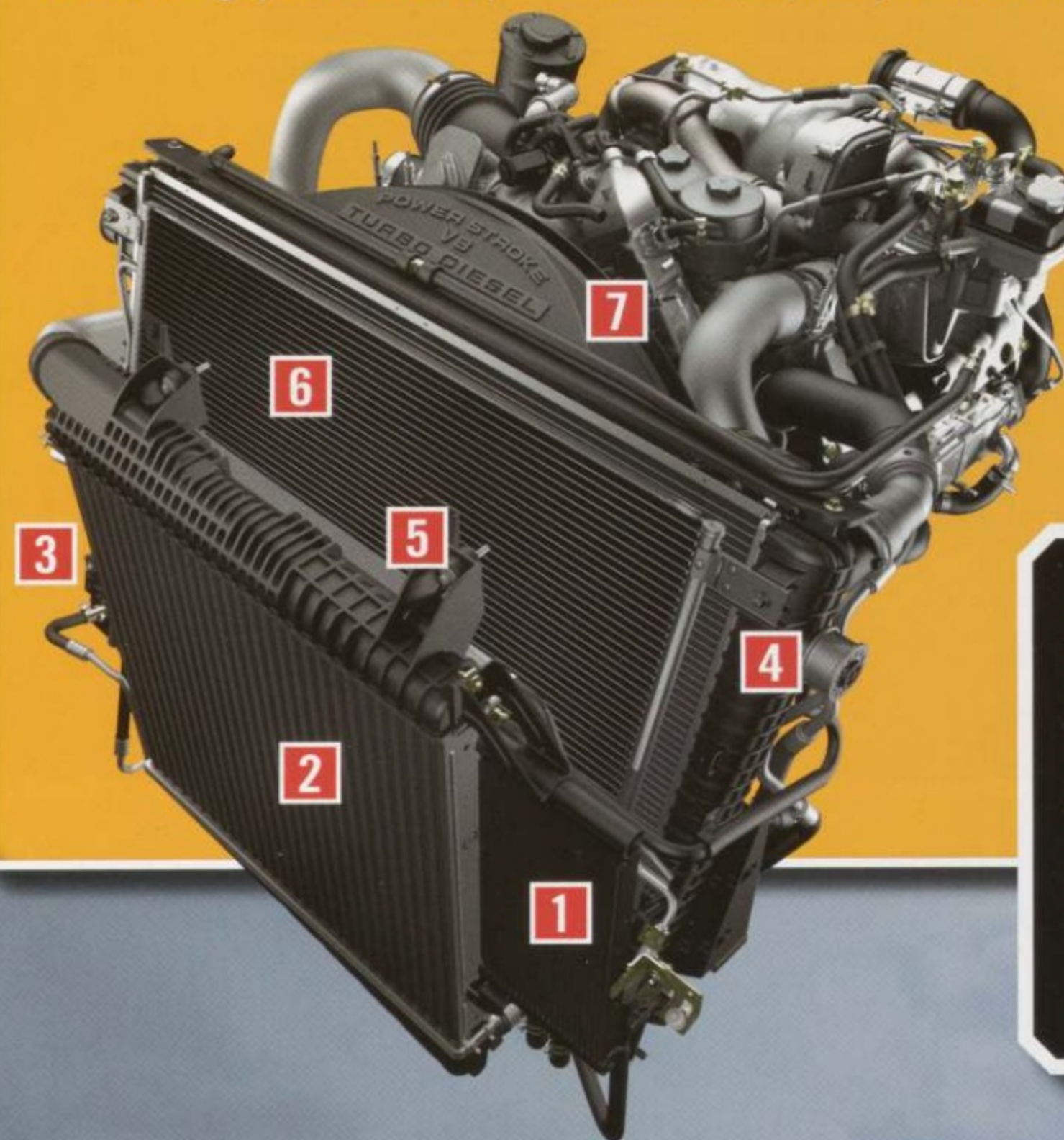
## Diesel Oxidation Catalyst and Diesel Particulate Filter

A rugged stainless steel housing contains the **DIESEL OXIDATION CATALYST (DOC)**, and the **DIESEL PARTICULATE FILTER (DPF)**. Up front, the DOC reduces hydrocarbons in the exhaust and generates heat for the DPF. Next, the DPF traps particulates in its highly engineered silicon carbide wall-flow catalyst. The new system reduces particulate matter (soot) emissions by a factor of 10, bringing it to levels on par with a gasoline engine of similar size and power. The DOC/DPF is self-cleaning and self-diagnostic, automatically performing a regeneration/clean cycle when needed, without any driver input required.



## Comprehensive Cooling

This new cooling system was actually designed for the F-550 Super Duty®. The engine radiator is significantly larger, and the water pump's flow rate is nearly 50% greater. There are 6 different radiators (coolers) — including one for the fuel cooling system — designed to support engine emissions and enhance durability, power and torque. An engine-mounted fan shroud improves airflow efficiency, resulting in an overall cooling system that is capable and reliable, especially under extreme towing.

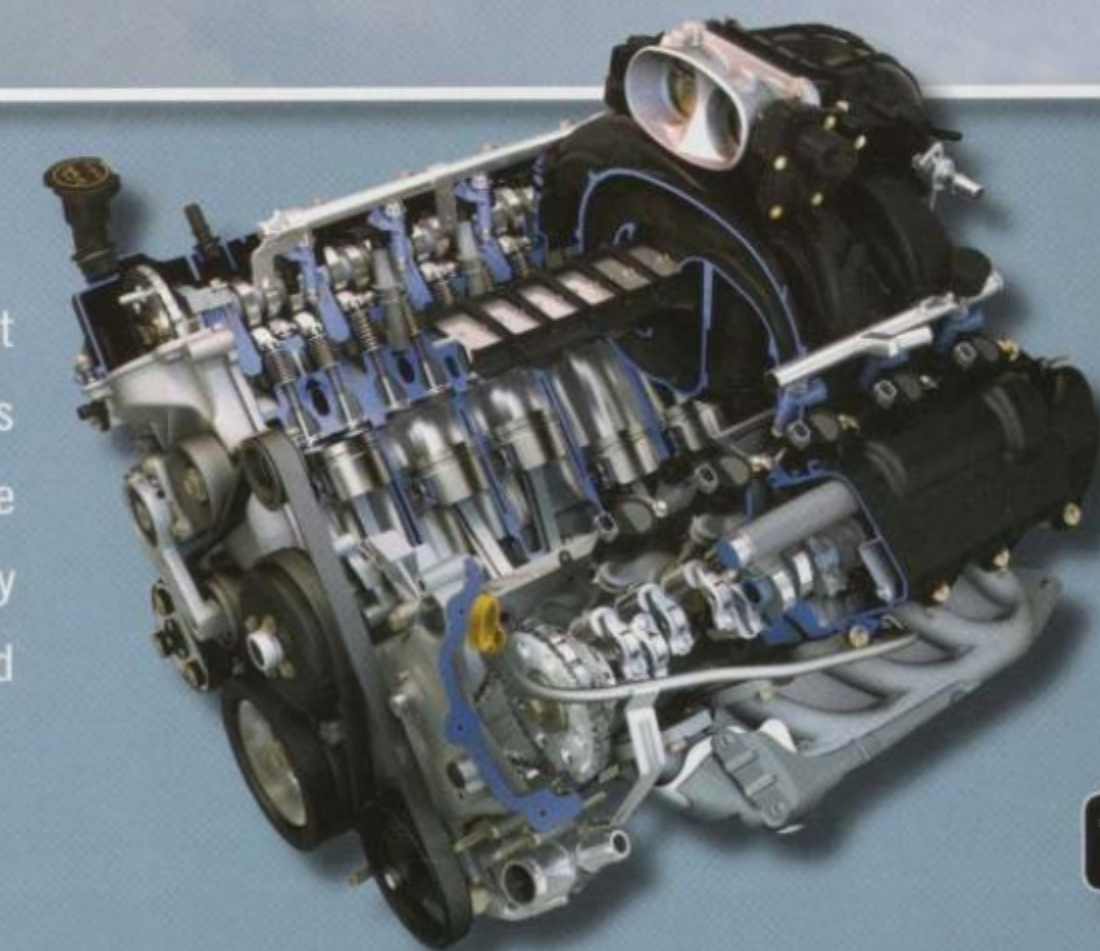


- 1 Fuel Heat Exchanger
- 2 Turbocharger Intercooler
- 3 Transmission Cooler
- 4 Larger Engine Radiator
- 5 Power Steering Cooler
- 6 Air Conditioning Condenser
- 7 Engine-Mounted Shroud

## Triton® Gas Power\*

A rugged 5.4L V8 or 6.8L V10 gasoline powerplant with manual or automatic transmission is yours to choose as well, with features like Fail-Safe Cooling for enhanced reliability. In a properly equipped Super Duty, the 6.8L V10 out-hauls and out-tows the competition's diesels.

\*Not available on F-450.





# OUT IN FRONT

Class-leading capability begins with a rock-solid foundation. Thick frame rails join rugged crossmembers to construct a rigid frame. Robust suspensions and huge axles handle the heaviest loads. Braking is firm and predictable, stop after stop. While ride and handling reach high levels of comfort and confidence. Super Duty® is built to lead the way in capability, and to offer a superb driving experience.

**STAGGERED REAR SHOCKS** help deliver a smooth ride and confident handling loaded or unloaded.

**RIVETED, WELDED OR BOTH**, crossmembers are secured by the method that optimizes frame capability. The final crossmember is a 2-piece weldment that stiffens the rear of the frame for desirable ride and handling characteristics.

**HITCH RECEIVERS** are standard on every Super Duty pickup, and each is rated to the truck's capabilities.

**HIGH-STRENGTH FRONT-END STRUCTURE** Super Duty uses all high-strength steel (approximately 2 times stronger than regular steel) in its rugged hydroformed front-end structure.

**FULLY BOXED FRONT FRAME RAILS** are extra-rigid structures that provide added strength for front-suspension mounts and for upfits like snowplows.

**NEW FRONT DROP HORNS** lower the front bumper for compatibility with car bumpers.

**STANDARD FRONT TOW HOOKS** are a closed-loop design that have been tested to 125% of the heaviest GVWR with just one hook.

**TWIN-COIL MONOBEAM FRONT SUSPENSION** on all 4x4 models and F-450 4x2 allows a wide range of Gross Axle Weight Ratings. Front **TWIN I-BEAMS** give F-250/F-350 4x2 models the toughness of solid I-beams with the handling and comfort of an independent suspension.

**ELECTROCOATED FRAME** provides enduring corrosion resistance.

**NEW REAR SPRINGS** measure over 203 mm (8 in.) longer than in 2007. Mounted farther forward, these 1676-mm (66-in.) springs manage torque without compromising ride comfort.

**MICRO-CELLULAR URETHANE (MCU) BODY MOUNTS** are long-lasting and provide a comfortable ride. MCU also compresses proportionally for more controlled body motions.

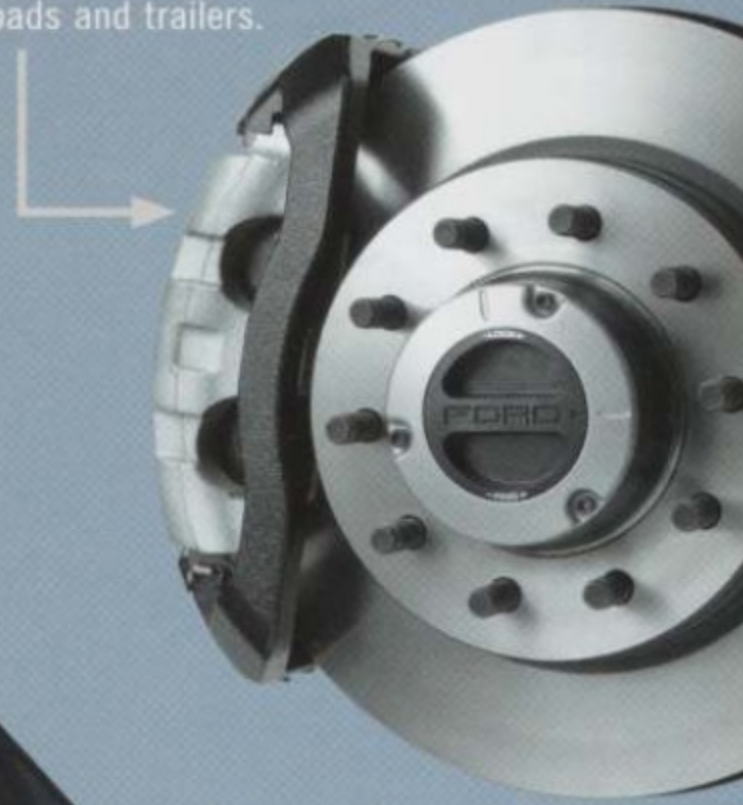
**BODY-TO-FRAME MOUNTING BOLTS** are driven from the bottom up, making aftermarket modifications easier.

**A THICK FRAME** is built of C-channel steel of up to 6.7 mm.

**HOTCHKISS REAR SUSPENSION** allows model-specific spring and axle ratings for a wide range of payload capacities, GVWRs and GAWRs. On certain axles, the differential case has a heat sink to manage operating temperatures.

**HIGHEST GVWR (GROSS VEHICLE WEIGHT RATING)** A properly equipped F-450 Super Duty can take on payload, passengers, fuel and cargo up to 6120 lbs. (2776 kg). F-350 carries a maximum load of 5720 lbs. (2595 kg).

**FRONT CONTROL ARMS** support huge front GAWRs for exceptional hauling and towing capability.





# TOUGH CHOICES

While F-250 and F-350 cover a broad range of capabilities, F-450 Super Duty® now gives you even more choice in fitting your truck to your tasks. Three hardworking model lines offer a clear separation of powers. So you can get the features you want with the capabilities you need.

## F-450

**MAXIMUM CAPABILITIES:** lbs. (kg)

**24,500 (11,113) 5th-Wheel Towing**

16,000 (7257) Conventional Towing • 6120 (2776) Payload

33,000 (14,969) GCWR • 14,500 (6577) GVWR

6500 (2948) Front GAWR

**EQUIPMENT CONFIGURATIONS:**

Engine: 6.4L Power Stroke only • Drivelines: 4x2 or 4x4 DRW only

Body: Crew Cab with 2438-mm (8-ft.) cargo box only

Trim Series: XL, XLT, LARIAT

## F-250

**MAXIMUM CAPABILITIES:** lbs. (kg)

**16,400 (7439) 5th-Wheel Towing**

12,500 (5670) Conventional Towing • 3170 (1438) Payload

23,000 (10,433) GCWR • 10,000 (4536) GVWR

**EQUIPMENT CONFIGURATIONS:**

Engines: 5.4L Triton® V8, 6.8L Triton V10, 6.4L Power Stroke® V8

Drivelines: 4x2 or 4x4 • Single Rear Wheel (SRW) only

Bodies: Regular Cab • SuperCab • Crew Cab

Cargo Box: 2057 mm (6.75 ft.) or 2438 mm (8 ft.)

Trim Series: XL, XLT, FX4, LARIAT

## F-350

**MAXIMUM CAPABILITIES:** lbs. (kg)

**18,700 (8482) 5th-Wheel Towing**

15,000 (6804) Conventional Towing

5720 (2595) Payload

26,000 (11,793) GCWR

13,000 (5897) GVWR

**EQUIPMENT CONFIGURATIONS:**

Engines: 5.4L Triton V8, 6.8L Triton V10, 6.4L Power Stroke V8

Drivelines: 4x2 or 4x4 • SRW and Dual Rear Wheel (DRW)

Bodies: Regular Cab • SuperCab • Crew Cab

Cargo Box: 2057 mm (6.75 ft.) or 2438 mm (8 ft.)

Trim Series: XL, XLT, FX4, LARIAT

NOTE: Ratings shown are maximum available for the model when properly equipped. Specific capabilities vary by final vehicle configuration. See your Ford of Canada Dealer for ordering details.



# XL

## All Work

The great features that make Super Duty® a superb work truck are all here. Just fire up the standard 5.4L 3-valve Triton® V8 and head for the job site. A 6-speed manual transmission and 4-wheel Anti-lock Brake System (ABS) deliver smooth going and secure stops. A Built Ford Tough® Hitch Receiver, 7-wire harness with relays, and 7- and 4-pin connector are ready to take on your next tow.

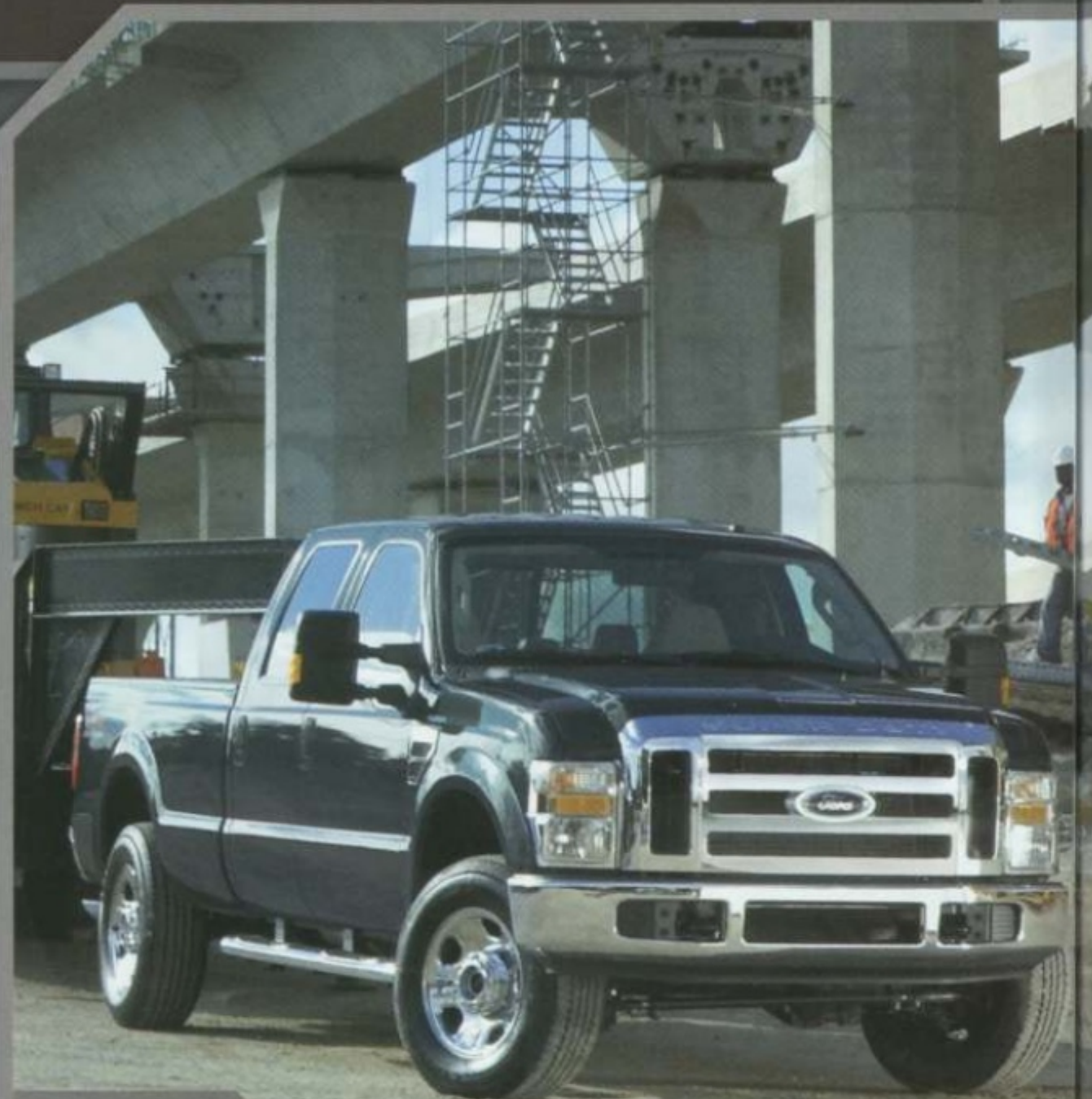


F-250 XL Regular Cab 4x2 in Oxford White

# TRIPLE THREAT

Here is one hardworking trio, each with a distinctive personality. The XL work truck has rugged features coupled with remarkable refinement. XLT takes comfort and convenience to the next level, while FX4 is an off-road specialist with unmistakable style.

XLT Crew Cab with optional equipment including cloth captain's chairs.



## XLT

F-350 XLT Crew Cab 4x4 in Black with available equipment.



# FX4



F-250 FX4 Crew Cab 4x4 in Red with available equipment including 20" wheels and PowerScope™ mirrors.

## Job Qualifications

You thrive on hard work, and Super Duty **XLT** is the ultimate power tool. Check out the hefty list of standard features that you'll enjoy while listening to the premium AM/FM stereo with single-CD player, MP3 capability and auxiliary audio input. For added personal space, choose the cloth luxury captain's chairs with centre console (left). A chrome grille and chrome bumpers dress up the exterior.

## Off-Road Expert

**FX4 OFF-ROAD** lives up to its name, equipped with a 4x4 drivetrain with limited-slip rear axle, special Rancho® branded off-road shocks, transfer case and fuel tank skid plates, and more. It also happens to be a head-turner, courtesy of its unique billet-style grille insert, Dark Shadow Grey bumpers and wheel-lip mouldings, and other exterior highlights. **FX4 Crew Cab** comes standard with a **FlexFold™ rear seat** (top). Its many configurations and steel loadfloor set the standard for practical versatility. FlexFold rear seats are standard on **XLT** and **LARIAT Crew Cabs** as well.





# LARIAT

## VERY REWARDING

Tow and haul just about anything, just about anywhere, in a truck that surrounds you with leather-trimmed seating, power conveniences and a premium sound system. LARIAT is the perfect marriage of hard work and luxury, with legions of satisfied owners who consider it their reward for jobs well done.

### LARIAT LUXURY

Optional **CAPTAIN'S CHAIRS** have premium leather trim, and include a **CENTRE CONSOLE** that can keep a laptop out of sight. Heated front seats are a welcome standard feature.

LARIAT Crew Cab with optional captain's chairs, Navigation System and more.



F-350 LARIAT Crew Cab 4x4 DRW in Black with available equipment.

### THE LARIAT LOOK

Rich **WOODGRAIN-STYLE ACCENTS** have long been a LARIAT trademark. **DUAL-ZONE ELECTRONIC AUTOMATIC TEMPERATURE CONTROL**, secondary steering wheel audio/climate controls and an enhanced message centre are all standard.

U.S. model shown with optional equipment.





# TWO FOR THE SHOW

One is a bold expression of urban style. The other is the top-of-the-line Super Duty® that proudly bears the KING RANCH brand. Make either your personal choice, and you win.

## XLT SPORT EQUIPMENT

Available on XLT SuperCab or Crew Cab. Includes XLT Standard Features, Plus:

- Monochrome Paint
- Body-Colour Grille and Bumpers
- Telescoping Trailer Tow Mirrors with Power/Heated Glass, Integrated Clearance Lamps and Turn Signals
- 5" Chrome Tubular Step Bars
- Fog Lamps
- Chrome Exhaust Tip
- Black Leather-Wrapped Steering Wheel
- Two-Tone Cloth 40/20/40 Split Front Seat
- Unique Ebony Interior Accents
- Ebony Carpet
- Black Rubber All-Weather Floor Mats
- Privacy Glass and Sliding Rear Window
- And More



F-250 XLT SPORT Crew Cab 4x4 in Dark Blue Pearl with available equipment.

## XLT SPORT

## KING RANCH®

## SUPER DUTY KING RANCH SPECIAL EQUIPMENT

Includes LARIAT Crew Cab Standard Features, Plus:

- KING RANCH-Branded Chaparral Leather-Trimmed Quad Captain's Chairs, Front and Rear Console Lids
- Heated Front Seats
- Power-Sliding Rear Window
- PowerScope™ Trailer Tow Mirrors
- Driver Memory Package
- Chrome Grille with Pueblo Gold Insert
- 18" Forged Painted-Aluminum Wheels with King Ranch Centre Caps (SRW)
- Two-Tone Paint with Pueblo Gold Lower Accent, Cab Steps, Box-Rail/Tailgate Mouldings, and Bumpers
- KING RANCH Badges with "Running W" Brand
- And Much More

Optional:

- 20" Forged Polished-Aluminum Wheels (SRW only)
- DVD-Based Navigation System



F-450 KING RANCH Crew Cab 4x4 in Forest Green/Pueblo Gold two-tone.



# SPECIFICATIONS

## MODEL LINEUP

Each series includes the standard equipment of the previous series, except where additions/exceptions are noted. Vehicles shown may contain optional equipment.



### XL

4-wheel Anti-lock Brake System (ABS) • Stationary Elevated Idle Control (SEIC) • Built Ford Tough® trailer hitch receiver, 7-pin wiring harness with relays and 7-/4-pin connector • Black bumpers • Black grille • Front fender vents • Solar-tinted glass • Black door and tailgate handles • Sealed-beam halogen headlamps • Black manual fold-away sideview mirrors • Quick-release tailgate with Tailgate Assist™ • Front tow hooks • 17" argent-painted steel wheels (F-250/F-350), 19.5" forged polished-aluminum wheels (F-450) • Fixed rear window • Manual air conditioning • Black instrument cluster with black gauges and white graphics • Message centre • AM/FM stereo with digital clock and 2 speakers • Black full-length vinyl floor covering • Heavy-duty vinyl reclining front seat • Black urethane steering wheel • Sun visors with passenger mirror • Day/night rearview mirror • SecuriLock® passive anti-theft ignition system



### XLT

Chrome-steel bumpers • Chrome grille with Medium Platinum insert • Dual-beam jewel-effect headlamps • Underhood service lamp • Black manual fold-away sideview mirrors with power glass • 17" chrome-clad steel wheels (F-250), 18" chrome-clad steel wheels (F-350 SRW), 17" argent-painted steel wheels (F-350 DRW) • Black air vents with chrome rings • Premium AM/FM stereo with single-CD/MP3 player and 4 speakers • Auxiliary audio input jack • Cruise control • Colour-coordinated carpeting • Colour-coordinated carpeted floor mats • Power front windows (includes rear windows on Crew Cab), door locks and accessory delay • Cloth 40/20/40 split front seat with centre armrest, cupholders and storage • Driver and passenger-side lumbar support • Black urethane steering wheel with tilt

### FX4

4x4 drivetrain with manual transfer case\* • Limited-slip rear axle\* • Rancho® branded shocks\* • Transfer case and fuel tank skid plates\* • Dark Shadow Grey bumpers • Fog lamps • Body-colour grille surround with billet-style Medium Platinum insert • Body-colour door handles • Dark Shadow Grey wheel-lip mouldings • 18" premium chrome-clad steel wheels with bright centre caps (F-250/F-350 SRW) • 17" forged polished-aluminum wheels (F-350 DRW) • Metallic-faced instrument cluster with chrome-ringed gauges • Silver-metallic air vents with chrome rings\* • Black carpeting with all-weather floor mats • Unique metallic-patterned instrument panel appliqué • Unique cloth 40/20/40 split front seats • Black leather-wrapped steering wheel with tilt • Advanced Security Group (includes autolamp, autolock, illuminated-entry system, remote keyless-entry system and driver door entry keypad) • Sun visors with driver and passenger mirrors • Overhead console with sunglasses and garage door opener storage

\*Unique FX4 content not standard on other trim levels.



### LARIAT

Chrome-steel bumpers • Black moulded cab steps • Privacy glass • Chrome grille with accent colour insert • Black door handles • 18" premium forged polished-aluminum wheels with bright centre caps (F-250/F-350 SRW) • PowerScope™ trailer tow mirrors • Manual-sliding rear window • Dual-zone Electronic Automatic Temperature Control (EATC) • Colour-coordinated carpeting • Colour-coordinated carpeted floor mats • Woodgrain-style instrument panel insert • Metallic-faced instrument cluster with cream gauges • Enhanced message centre with trip computer • Auto-dimming rearview mirror • Power driver and front-passenger seats • Premium leather-trimmed 40/20/40 split front seat with centre armrest, cupholders and storage • Heated front seats • Colour-coordinated leather-wrapped steering wheel with secondary audio and climate controls • Sun visors with illuminated mirrors • Universal garage door opener



## STANDARD FEATURES

### SAFETY/SECURITY

4-wheel power disc brakes with Anti-lock Brake System (ABS)  
Airbags\*\* – Driver and right-front passenger  
Alert chimes – Headlamps-on, key-in-ignition and door ajar  
Belt-Minder® safety belt reminder  
Brake/shift interlock (with automatic transmission)  
Child-safety seat top tether anchors (Regular Cab front passenger and all rear seating positions)  
Fuel pump inertia shutoff switch  
Height-adjustable safety belts – Front outboard  
Locking tailgate  
Passenger airbag deactivation switch (Regular Cab, SuperCab)  
Safety belt energy-management retractors – Front outboard positions  
SecuriLock® passive anti-theft ignition system  
Side-intrusion door beams  
Spare tire/wheel lock

### MECHANICAL

5.4L 3-valve SOHC Triton® V8 engine (F-250, F-350)  
6.4L OHV 32-valve Power Stroke® V8 Turbo Diesel engine (F-450)  
6-speed manual overdrive transmission  
Battery saver  
Engine block heater  
Fail-safe engine cooling system (gas engines)  
Fuel tank – 113.5-litre (25.0-gallon) capacity with 6¾' box, 143-litre (31.5-gallon) capacity with 8' box  
Power steering  
Quick-release tailgate with Tailgate Assist  
Spare tire/wheel/jack – Conventional with underframe carrier (crank-down type)  
Stabilizer bar – Front  
Stabilizer bar – Rear (DRW only)  
Stainless steel exhaust system (major components)  
Stationary Elevated Idle Control (SEIC)†  
Steering damper  
Styleside box – 6¾' SRW/DRW and 8' SRW/DRW††

### INTERIOR

Air conditioning  
Assist and ride handles  
Coat hooks – 1 (Regular Cab), 2 in rear of cab (SuperCab and Crew Cab)  
Dome light (front and rear with Crew Cab)  
Flip-open rear quarter windows (SuperCab)  
Message centre with odometer, trip odometer, engine-hour meter and warning messages  
Power points – 2 on instrument panel (including lighter)  
Steering wheel – Black urethane  
TowCommand Integrated Trailer Brake Controller (TBC)‡ (F-450)

### EXTERIOR

Bumpers – Front and rear step  
Cargo box lamp – Integrated with centre high-mounted stop lamp  
Cargo box – Partitionable and stackable  
Cargo box-rail and tailgate top mouldings  
Cargo box stake pockets  
Cargo tie-down hooks – 4 in 6¾' box, 6 in 8' box  
Solar-tinted glass  
Tow hooks – 2 in front  
Trailer hitch receiver – 12.5K 51 mm (2") Built Ford Tough (SRW/F-350 DRW 5.4L)  
Trailer hitch receiver – 15K 64 mm (2.5") Built Ford Tough (F-350 DRW 6.8L/6.4L only)  
Trailer hitch receiver – 16K 64 mm (2.5") Built Ford Tough (F-450 only)  
Trailer tow – 7-/4-pin connector and trailer brake wiring kit (in-cab, no controller)  
Windshield wipers – Intermittent

\*\*Always wear your safety belt and always deactivate the passenger airbag when using a rear-facing child-safety seat with Regular Cab and SuperCab models. Always wear your safety belt and always secure children in the rear seat. †Final-stage manufacturer must supply control switches. ††DRW available on F-350 and F-450 models only. ‡TBC verified to be compatible with electric-actuated drum brakes only.

Comparisons based on 2007 competitive models, publicly available information and Ford certification data at time of printing. Some features discussed may be optional. Vehicles shown may contain optional equipment. Features shown may be offered only in combination with other options or subject to additional ordering requirements or limitations. Dimensions and capacities shown may vary due to optional features and/or production variability. Following publication of the catalogue, certain changes in standard equipment, options and the like, or product delays may have occurred which would not be included in these pages. Your Ford of Canada Dealer is the best source for up-to-date information. Ford Division reserves the right to change product specifications at any time without incurring obligations.

## FEATURES & OPTIONS

	XL	XLT	FX4 (F-250/F-350 only)	LARIAT
				<b>MECHANICAL</b>
● ● ● ●	● ● ● ●	● ● ● ●	● ● ● ●	5.4L 3-valve SOHC Triton V8 engine (not available on DRW Crew Cab)
○ ○ ○ ○	○ ○ ○ ○	○ ○ ○ ○	○ ○ ○ ○	6.8L 3-valve SOHC Triton V10 engine (standard on F-350 DRW Crew Cab)
○ ○ ○ ○	○ ○ ○ ○	○ ○ ○ ○	○ ○ ○ ○	6.4L OHV 32-valve Power Stroke V8 Turbo Diesel engine (standard on F-450)
○ ○ ○ ○	○ ○ ○ ○	○ ○ ○ ○	○ ○ ○ ○	TorqShift® 5-speed automatic overdrive transmission
○ ● ● ●	○ ● ● ●	○ ● ● ●	○ ● ● ●	Electronic Shift-On-the-Fly (ESOF) 4-wheel-drive system with auto/manual locking hubs (4x4 models only)
● ○ ○ ○	● ○ ○ ○	● ○ ○ ○	● ○ ○ ○	Manual 4-wheel-drive system with manual locking hubs (4x4 models only)
● — — —	● — — —	● — — —	● — — —	17" argent-painted steel wheels – 5 (F-250/350 SRW)
● ● — —	● ● — —	● ● — —	● ● — —	17" argent-painted steel wheels – 7 (F-350 DRW)
— ● — —	— ● — —	— ● — —	— ● — —	17" chrome-clad steel wheels – 4 (F-250)
— ○ ● ●	— ○ ● ●	— ○ ● ●	— ○ ● ●	17" forged polished-aluminum wheels – 4 (F-350 DRW)
● — — —	● — — —	● — — —	● — — —	18" argent-painted steel wheels – 4 (F-350 SRW)
— — ● —	— — ● —	— — ● —	— — ● —	18" premium chrome-clad steel wheels – 4 (F-250/F-350 SRW)
— ○ — —	— ○ — —	— ○ — —	— ○ — —	18" forged polished-aluminum wheels – 4 (F-250/F-350 SRW)
— — — ●	— — — ●	— — — ●	— — — ●	18" premium forged polished-aluminum wheels – 4 (F-250/F-350 SRW)
— ● — —	— ● — —	— ● — —	— ● — —	18" chrome-clad steel wheels – 4 (F-350 SRW)
● ● ● ●	● ● ● ●	● ● ● ●	● ● ● ●	19.5" forged polished-aluminum wheels – 4 (F-450)
— ● ○ ○	— ● ○ ○	— ● ○ ○	— ● ○ ○	20" forged polished-aluminum wheels – 4 (F-250/F-350 SRW 4x4 only)
● — — —	● — — —	● — — —	● — — —	LT245/75R17 all-season BSW tires – 5 (F-250)
○ — — —	○ — — —	○ — — —	○ — — —	LT245/75R17 all-terrain BSW tires – 5 (F-250)
○ ● — —	○ ● — —	○ ● — —	○ ● — —	LT265/70R17 all-season BSW tires – 5 (F-250)
— ○ — —	— ○ — —	— ○ — —	— ○ — —	LT265/70R17 all-terrain BSW tires – 4 (F-250)
○ ○ — —	○ ○ — —	○ ○ — —	○ ○ — —	LT265/70R17 all-terrain OWL tires – 4 (F-250)
— ○ — —	— ○ — —	— ○ — —	— ○ — —	LT265/70R17 all-terrain OWL tires – 4 (F-250)
● — — —	● — — —	● — — —	● — — —	LT265/70R17 all-season BSW tires – 5 (F-350 SRW)
○ — — —	○ — — —	○ — — —	○ — — —	LT265/70R17 all-terrain BSW tires – 5 (F-350 SRW)
— ○ — ●	— ○ — ●	— ○ — ●	— ○ — ●	LT275/65R18 all-season BSW tires – 5 (F-250 4x2)
— ○ — ●	— ○ — ●	— ○ — ●	— ○ — ●	LT275/70R18 all-season BSW tires – 5 (F-250 4x4)
— ○ — ○	— ○ — ○	— ○ — ○	— ○ — ○	LT275/70R18 all-terrain BSW tires – 5 (F-250 4x4)
○ ○ — ○	○ ○ — ○	○ ○ — ○	○ ○ — ○	LT275/70R18 all-terrain BSW tires – 5 (F-350 SRW)
— ○ ● ○	— ○ ● ○	— ○ ● ○	— ○ ● ○	LT275/70R18 all-terrain OWL tires – 4 (F-250/F-350 SRW 4x4)
— — ○ ○	— — ○ ○	— — ○ ○	— — ○ ○	LT275/65R20 all-terrain BSW tires – 4 (F-250/F-350 SRW 4x4)
○ ● — —	○ ● — —	○ ● — —	○ ● — —	LT275/65R20 all-terrain OWL tires – 4 (F-250/F-350 SRW 4x4)
○ ● — —	○ ● — —	○ ● — —	○ ● — —	LT275/70R18 all-season BSW tires – 5 (F-350 SRW 4x4)
● ● — —	● ● — —	● ● — —	● ● — —	LT245/75R17 all-season BSW tires – 7 (F-350 DRW)
○ ○ — —	○ ○ — —	○ ○ — —	○ ○ — —	LT245/75R17 all-terrain BSW tires – 7 (F-350 DRW)
— ○ ● ○	— ○ ● ○	— ○ ● ○	— ○ ● ○	LT245/75R17 all-terrain OWL tires – 4 (F-350 DRW)
● ● — —	● ● — —	● ● — —	● ● — —	225/70R19.5 all-season BSW tires – 7 (F-450)
— ○ ● ●	— ○ ● ●	— ○ ● ●	— ○ ● ●	Advanced Security Group – Includes autolamp, autolock (automatic transmission only), illuminated-entry system, remote keyless-entry system with 2 key fobs and driver door entry keypad
○ ○ ○ ○	○ ○ ○ ○	○ ○ ○ ○	○ ○ ○ ○	Alternator – Single, extra-heavy-duty 200-amp (diesel engine only)
○ ○ ○ ○	○ ○ ○ ○	○ ○ ○ ○	○ ○ ○ ○	Alternators – Dual, 320-amp total (diesel engine only)
○ ○ ● ○	○ ○ ● ○	○ ○ ● ○	○ ○ ● ○	Limited-slip rear axle
● ● ● ●	● ● ● ●	● ● ● ●	● ● ● ●	Power TakeOff (PTO) provision – Automatic transmission (included with man. trans.; PTO obstructed by catalyst placement on 5.4L and 6.8L engines)
○ ○ ○ ○	○ ○ ○ ○	○ ○ ○ ○	○ ○ ○ ○	Reverse Vehicle Aid Sensor (n/a with pickup box delete)
● ● ● ●	● ● ● ●	● ● ● ●	● ● ● ●	TowCommand Integrated Trailer Brake Controller* (standard on F-450)
○ ○ ○ ○	○ ○ ○ ○	○ ○ ○ ○	○ ○ ○ ○	Traction Control
				<b>SEATING</b>
● — — —	● — — —	● — — —	● — — —	Front reclining seat – HD vinyl
● — — —	● — — —	● — — —	● — — —	Front reclining seat with integrated armrest – HD vinyl
○ — — —	○ — — —	○ — — —	○ — — —	Front reclining seat – HD cloth
○ — — —	○ — — —	○ — — —	○ — — —	Front reclining seat with integrated armrest – HD cloth
○ ● ● ●	○ ● ● ●	○ ● ● ●	○ ● ● ●	Front seat – 40/20/40 split with armrest, cupholders and storage (XL – HD vinyl or cloth, XLT – cloth, FX4 – cloth, LARIAT – leather-trimmed)
○ — — —	○ — — —	○ — — —	○ — — —	Front bucket seats – HD vinyl
○ — — —	○ — — —	○ — — —	○ — — —	Front bucket seats – HD cloth
— ○ ○ —	— ○ ○ —	— ○ ○ —	— ○ ○ —	Front cloth captain's chairs with centre console







# SPECIFICATIONS

## CONVENTIONAL TOWING — MAXIMUM LOADED TRAILER WEIGHTS kg (lbs.)

MANUAL TRANSMISSION			REGULAR CAB				SUPERCAB			
Engine	Axle Ratio	GCWR	F-250/F-350 4x2 SRW	F-350 4x2 DRW	F-250/F-350 4x4 SRW	F-350 4x4 DRW	F-250/F-350 4x2 SRW	F-350 4x2 DRW	F-250/F-350 4x4 SRW	F-350 4x4 DRW
5.4L 3-valve Triton® V8	3.73	6804 (15,000)	4128 (9100)	—	3901 (8600)	—	3992 (8800)	—	3810 (8400)	—
	4.10	7711 (17,000)	5035 (11,100)	—	4808 (10,600)	—	4899 (10,800)	—	4717 (10,400)	—
6.8L 3-valve Triton V10	4.10	9072 (20,000)	5670 (12,500)	—	5670 (12,500)	—	5670 (12,500)	—	5670 (12,500)	—
		9299 (20,500)	—	6350 (14,000)	—	6123 (13,500)	—	6169 (13,600)	—	5942 (13,100)
	4.30	9979 (22,000)	5670 (12,500)	—	5670 (12,500)	—	5670 (12,500)	—	5670 (12,500)	—
6.4L Power Stroke® V8 Turbo Diesel	3.73	10,206 (22,500)	—	6804 (15,000)	—	6804 (15,000)	—	6804 (15,000)	—	6804 (15,000)
		10,433 (23,000)	5670 (12,500)	—	5670 (12,500)	—	5670 (12,500)	—	5670 (12,500)	—
	10,659 (23,500)	—	6804 (15,000)	—	6804 (15,000)	—	6804 (15,000)	—	6804 (15,000)	
	4.10	10,659 (23,500)	—	6804 (15,000)	—	6804 (15,000)	—	6804 (15,000)	—	6804 (15,000)
	4.30LS	12,247 (27,000)	—	—	—	—	—	—	—	—
4.88LS	12,701 (28,000)	—	—	—	—	—	—	—	—	

AUTOMATIC TRANSMISSION			REGULAR CAB				SUPERCAB			
Engine	Axle Ratio	GCWR	F-250/F-350 4x2 SRW	F-350 4x2 DRW	F-250/F-350 4x4 SRW	F-350 4x4 DRW	F-250/F-350 4x2 SRW	F-350 4x2 DRW	F-250/F-350 4x4 SRW	F-350 4x4 DRW
5.4L 3-valve Triton V8	3.73	7257 (16,000)	4581 (10,100)	—	4354 (9600)	—	4445 (9800)	—	4264 (9400)	—
	4.10	8165 (18,000)	5488 (12,100)	—	5262 (11,600)	—	5352 (11,800)	—	5171 (11,400)	—
6.8L 3-valve Triton V10	4.10	8391 (18,500)	—	5488 (12,100)	—	5307 (11,700)	—	5307 (11,700)	—	5126 (11,300)
		9525 (21,000)	5670 (12,500)	—	5670 (12,500)	—	5670 (12,500)	—	5670 (12,500)	—
	4.30	9752 (21,500)	—	6804 (15,000)	—	6577 (14,500)	—	6622 (14,600)	—	6396 (14,100)
6.4L Power Stroke V8 Turbo Diesel	3.73	10,206/10,433 <sup>1</sup> (22,500/23,000) <sup>1</sup>	5,670 (12,500)	—	5,670 (12,500)	—	5,670 (12,500)	—	5,670 (12,500)	—
		10,433 (23,000)	—	6804 (15,000)	—	6804 (15,000)	—	6804 (15,000)	—	6804 (15,000)
	10,433 (23,000)	5670 (12,500)	—	5670 (12,500)	—	5670 (12,500)	—	5670 (12,500)	—	
	4.10	10,659 (23,500)	—	6804 (15,000)	—	6804 (15,000)	—	6804 (15,000)	—	6804 (15,000)
	4.30LS <sup>2</sup>	11,793 (26,000)	—	6804 (15,000)	—	6804 (15,000)	—	6804 (15,000)	—	6804 (15,000)
4.88LS <sup>2</sup>	14,969 (33,000)	—	—	—	—	—	—	—	—	

## 5TH-WHEEL TOWING — MAXIMUM LOADED TRAILER WEIGHTS kg (lbs.)

MANUAL TRANSMISSION			REGULAR CAB				SUPERCAB			
Engine	Axle Ratio	GCWR	F-250/F-350 4x2 SRW	F-350 4x2 DRW	F-250/F-350 4x4 SRW	F-350 4x4 DRW	F-250/F-350 4x2 SRW	F-350 4x2 DRW	F-250/F-350 4x4 SRW	F-350 4x4 DRW
5.4L 3-valve Triton V8	3.73	6804 (15,000)	4128 (9100)	—	3901 (8600)	—	3992 (8800)	—	3810 (8400)	—
	4.10	7711 (17,000)	5035 (11,100)	—	4808 (10,600)	—	4899 (10,800)	—	4717 (10,400)	—
6.8L 3-valve Triton V10	4.10	9072 (20,000)	6305 (13,900)	—	6123 (13,500)	—	6214 (13,700)	—	5987 (13,200)	—
		9299 (20,500)	—	6350 (14,000)	—	6123 (13,500)	—	6169 (13,600)	—	5942 (13,100)
	4.30	9979 (22,000)	7212 (15,900)	—	7031 (15,500)	—	7121 (15,700)	—	6895 (15,200)	—
6.4L Power Stroke V8 Turbo Diesel	3.73	10,206 (22,500)	—	7257 (16,000)	—	7031 (15,500)	—	7076 (15,600)	—	6849 (15,100)
		10,433 (23,000)	7303 (16,100)	—	7121 (15,700)	—	7212 (15,900)	—	6985 (15,400)	—
	10,659 (23,500)	—	7348 (16,200)	—	7121 (15,700)	—	7167 (15,800)	—	6940 (15,300)	
	4.10	10,659 (23,500)	—	7348 (16,200)	—	7121 (15,700)	—	7167 (15,800)	—	6940 (15,300)
	4.30LS	12,247 (27,000)	—	—	—	—	—	—	—	—
4.88LS	12,701 (28,000)	—	—	—	—	—	—	—	—	

AUTOMATIC TRANSMISSION			REGULAR CAB				SUPERCAB			
Engine	Axle Ratio	GCWR	F-250/F-350 4x2 SRW	F-350 4x2 DRW	F-250/F-350 4x4 SRW	F-350 4x4 DRW	F-250/F-350 4x2 SRW	F-350 4x2 DRW	F-250/F-350 4x4 SRW	F-350 4x4 DRW
5.4L 3-valve Triton V8	3.73	7257 (16,000)	4581 (10,100)	—	4354 (9600)	—	4445 (9800)	—	4264 (9400)	—
	4.10	8165 (18,000)	5488 (12,100)	—	5262 (11,600)	—	5352 (11,800)	—	5171 (11,400)	—
6.8L 3-valve Triton V10	4.10	8391 (18,500)	—	5488 (12,100)	—	5307 (11,700)	—	5307 (11,700)	—	5126 (11,300)
		9525 (21,000)	6759 (14,900)	—	6577 (14,500)	—	6668 (14,700)	—	6441 (14,200)	—
	4.30	9752 (21,500)	—	6804 (15,000)	—	6577 (14,500)	—	6622 (14,600)	—	6396 (14,100)
6.4L Power Stroke V8 Turbo Diesel	3.73	10,206/10,433 <sup>1</sup> (22,500/23,000) <sup>1</sup>	7,439/7,620 (16,400/16,800) <sup>1</sup>	—	7,257/7,394 (16,000/16,300) <sup>1</sup>	—	7,348/7,530 (16,200/16,600) <sup>1</sup>	—	7,121/7,303 (15,700/16,100) <sup>1</sup>	—
		10,433 (23,000)	—	7484 (16,500)	—	7257 (16,000)	—	7303 (16,100)	—	7076 (15,600)
	10,433 (23,000)	7303 (16,100)	—	7121 (15,700)	—	7212 (15,900)	—	6985 (15,400)	—	
	4.10	10,659 (23,500)	—	7348 (16,200)	—	7121 (15,700)	—	7167 (15,800)	—	6940 (15,300)
	4.30LS <sup>2</sup>	11,793 (26,000)	—	8482 (18,700)	—	8255 (18,200)	—	8301 (18,300)	—	8074 (17,800)
4.88LS <sup>2</sup>	14,969 (33,000)	—	—	—	—	—	—	—	—	

Conventional and 5th-Wheel Towing Footnotes:  
<sup>1</sup>Available with F-350 SRW model only. <sup>2</sup>Available with TowBoss Package only. <sup>3</sup>Available with High-Capacity Trailer Tow Package only.

Maximum capabilities shown are for properly equipped vehicles with required equipment and a 68-kg (150-lb.) driver. Weight of additional options, equipment, passengers and cargo must be deducted from this weight. For additional information, see your Ford of Canada Dealer.  
**Conventional Towing Notes:** This information also applies to models with Pickup Box Delete option (66D). Trailer tongue load weight should be 10-15% of total loaded trailer weight. Make sure that the vehicle payload (reduced by option weight) will accommodate trailer tongue load weight and the weight of passengers and cargo added to the towing vehicle. The addition of trailer tongue load weight, and the weight of passengers and cargo cannot cause vehicle weights to exceed the rear GAWR (Gross Axle Weight Rating) or GVWR (Gross Vehicle Weight Rating). These ratings can be found on the Vehicle Compliance Label. For F-250/F-350 SRW models, F-250 trailer weights are shown; F-350 trailer weights are within 91 kg (200 lbs.). Check with your sales consultant.

**5th-Wheel Towing Notes:** This information also applies to models with Pickup Box Delete option (66D). Trailer kingpin weight should be 15-25% of total loaded trailer weight. Make sure that the vehicle payload (reduced by option weight) will accommodate trailer kingpin weight and the weight of passengers and cargo added to the towing vehicle. The addition of trailer kingpin weight, and the weight of passengers and cargo cannot cause vehicle weights to exceed the rear GAWR (Gross Axle Weight Rating) or GVWR (Gross Vehicle Weight Rating). These ratings can be found on the vehicle Safety Compliance Certification Label. For F-250/F-350 SRW models, F-250 trailer weights are shown; F-350 trailer weights are within 91 kg (200 lbs.). Check with your sales consultant.

## MAXIMUM PAYLOAD

### GVWR RATINGS

F-Series Super Duty® models maintain near-maximum payload capacity even when a larger cab or engine is selected.

### MAXIMUM PAYLOAD WEIGHT RATINGS (LBS.) — MODEL/WHEELBASE (WB)

	MAX. GVWR (LBS.)	REGULAR CAB		SUPERCAB		CREW CAB	
		137.0" WB	141.8" WB	158.0" WB	156.2" WB	172.4" WB	
F-250 4x2 SRW	3992 (8800)	1388 (3060) <sup>4</sup>	—	—	—	—	
	4082 (9000)	1420 (3130) <sup>5</sup>	1365 (3010) <sup>4</sup>	—	—	—	
	4173 (9200)	—	1393 (3070) <sup>4</sup>	1397 (3080) <sup>4</sup>	1374 (3030) <sup>4</sup>	—	
	4264 (9400)	1225 (2700) <sup>6</sup>	—	1429 (3150) <sup>5</sup>	1406 (3100) <sup>5</sup>	1411 (3110) <sup>4</sup>	
	4354 (9600)	—	1202 (2650) <sup>4</sup>	—	—	1438 (3170) <sup>5</sup>	
F-250 4x4 SRW	4445 (9800)	—	—	1238 (2730) <sup>6</sup>	1211 (2670) <sup>6</sup>	—	
	4491 (9900)	—	—	—	—	1202 (2650) <sup>4</sup>	
	4536 (10,000)	—	—	—	—	1247 (2750) <sup>4</sup>	
	4082 (9000)	1270 (2800) <sup>4</sup>	—	—	—	—	
	4173 (9200)	1297 (2860) <sup>5</sup>	1247 (2750) <sup>4</sup>	—	—	—	
F-350 4x2 SRW	4627 (10,200)	—	1833 (4040) <sup>3</sup>	—	—	—	
	4672 (10,300)	—	—	—	—	—	
	4717 (10,400)	—	—	1882 (4150) <sup>4</sup>	1855 (4090) <sup>4</sup>	—	
	4808 (10,600)	—	—	1910 (4210) <sup>5</sup>	1887 (4160) <sup>5</sup>	1891 (4170) <sup>4</sup>	
	4853 (10,700)	1751 (3860) <sup>6</sup>	—	—	—	—	
F-350 4x4 SRW	4899 (10,800)	—	1683 (3710) <sup>6</sup>	—	—	1919 (4230) <sup>5</sup>	
	4990 (11,000)	—	—	1719 (3790) <sup>6</sup>	1696 (3740) <sup>6</sup>	—	
	5080 (11,200)	—	—	—	—	1728 (3810) <sup>6</sup>	
	4763 (10,500)	1887 (4160) <sup>4</sup>	—	—	—	—	
	4808 (10,600)	—	1819 (4010) <sup>4</sup>	—	—	—	
F-350 4x2 DRW	4853 (10,700)	1914 (4220) <sup>5</sup>	—	—	—	—	
	4899 (10,800)	—	1846 (4070) <sup>5</sup>	1851 (4080) <sup>4</sup>	1828 (4030) <sup>4</sup>	—	
	4990 (11,000)	—	—	1878 (4140) <sup>5</sup>	1855 (4090) <sup>5</sup>	1860 (4100) <sup>4</sup>	
	5035 (11,100)	1724 (3800) <sup>6</sup>	—	—	—	—	
	5080 (11,200)	—	1656 (3650) <sup>6</sup>	—	—	1891 (4170) <sup>5</sup>	
F-350 4x4 DRW	5171 (11,400)	—	—	1687 (3720) <sup>6</sup>	1665 (3670) <sup>6</sup>	—	
	5216 (11,500)	—	—	—	—	1651 (3640) <sup>6</sup>	
	5352 (11,800)	2545 (5610) <sup>4</sup>	—	—	—	—	
	5443 (12,000)	2572 (5670) <sup>5</sup>	—	—	—	—	
	5534 (12,200)	—	—	2554 (5630) <sup>4</sup>	—	—	
F-450 4x2 DRW	5625 (12,400)	2381 (5250) <sup>6</sup>	—	2581 (5690) <sup>5</sup>	2558 (5640) <sup>5</sup>	—	
	5715 (12,600)	—	—	—	—	2595 (5720) <sup>5</sup>	
	5806 (12,800)	—	—	2390 (5270) <sup>6</sup>	2368 (5220) <sup>6</sup>	—	
	5897 (13,000)	—	—	—	—	2400 (5290) <sup>6</sup>	
	5443 (12,000)	2422 (5340) <sup>4</sup>	—	—	—	—	
F-450 4x4 DRW	5534 (12,200)	2454 (5410) <sup>5</sup>	—	—	—	—	
	5625 (12,400)	—	—	2436 (5370) <sup>4</sup>	—	—	
	5715 (12,600)	2259 (4980) <sup>6</sup>	—	2463 (5430) <sup>5</sup>	2440 (5380) <sup>5</sup>	2381 (5250) <sup>5</sup>	
	5897 (13,000)	—	—	2272 (5010) <sup>6</sup>	2250 (4960) <sup>6</sup>	2191 (4830) <sup>6</sup>	
	6577 (14,500)	—	—	—	—	2776 (6120) <sup>6</sup>	
F-450 4x4 DRW	6577 (14,500)	—	—	—	—	2595 (5720) <sup>6</sup>	
	7257/7439 (16,000/16,400) <sup>1</sup>	—	—	—	—	—	
	—	—	—	—	—	—	
	—	—	—	—	—	—	
	—	—	—	—	—	—	

<sup>4</sup>5.4L/6-speed manual. <sup>5</sup>6.8L/6-speed manual. <sup>6</sup>6.4L/6-speed manual.



# SPECIFICATIONS

## MECHANICAL SPECIFICATIONS

### FRONT SUSPENSION

Type	Twin-I-Beam (F-250/F-350 4x2); solid Twin-Coil Monobeam axle (F-250/F-350 4x4, F-450 4x2 and 4x4)
Axle (rating @ ground)	2381 kg (5250 lbs.) (F-250/F-350 4x2); 2722 kg (6000 lbs.) (F-250/F-350 4x4); 3175 kg (7000 lbs.) (F-450)
Springs	Coil
Shock absorbers	35 mm (1 3/8") gas type
Stabilizer bar	Standard

### REAR SUSPENSION

Type	Solid axle
Axle (rating @ ground)	2812 kg (6200 lbs.) (F-250); 3302 kg (7280 lbs.) (F-350 SRW); 4082 kg (9000 lbs.) (F-350 DRW); 4990 kg (11,000 lbs.) (F-450)
Springs	Leaf
Shock absorbers	35 mm (1 3/8") gas type
Stabilizer bar	Standard on DRW pickup; optional in package on SRW pickup

### STEERING

Assist	Power
Overall ratio	20.16:1 (F-250/F-350 4x2); 20.38:1 (F-250/F-350 4x4); 17.8:1 average (F-450)

### BRAKES

Type	4-wheel disc ABS (standard)
Front (rotor diameter)	347 mm (13.66") (F-250/F-350); 369 mm (14.53") (F-450)
Rear (rotor diameter)	340 mm (13.39") (F-250/F-350); 390 mm (15.35") (F-450)

### WHEELS

Type	Steel (standard); chrome-clad steel or aluminum (optional)
Size	17" (standard); 18" or 20" (optional F-250/F-350 SRW); 19.5" (F-450)
Number of studs	8 (F-250/F-350); 10 (F-450)
Bolt-circle diameter	170 mm (6.7") SRW; 200 mm (7.87") F-350 DRW; 225 mm (8.85") F-450

### POWERTRAINS

ENGINE	4x4 TRANSFER CASE	6-SPEED MANUAL	5-SPEED AUTOMATIC
5.4L 3-Valve Triton® SEFI V8	2-speed	●	○
6.8L 3-Valve Triton SEFI V10	2-speed	●	○
6.4L Power Stroke® V8 Turbo Diesel	2-speed	●	○

● Standard ○ Optional

### ENGINES

	5.4L 3-VALVE TRITON V8 SOHC	6.8L 3-VALVE TRITON V10 SOHC	6.4L POWER STROKE V8 TURBO DIESEL OHV (32-Valve)
Type	Sequential Electronic	Sequential Electronic	High-Pressure Common-Rail
Fuel injection	Electronic	Electronic	Electronic
Engine control system	Specially tuned	Specially tuned	Series Sequential Turbochargers, intercooler
Induction system	12-volt; 650-CCA/72-amp	12-volt; 650-CCA/72-amp	Dual 12-volt; 750-CCA/78-amp
Battery	115-amp	115-amp	135-amp (Single 200-amp or dual combined 320-amp opt.)
Alternator	Pressurized series flow	Pressurized series flow	Pressurized series flow
Cooling system	8	10	8
Cylinders	Aluminum	Aluminum	Cast iron
Cylinder-head material	Cast iron	Cast iron	Cast iron
Block material	Hydraulic roller	Hydraulic roller	Push rod/rocker arms
Valve operation	Variable cam timing	Silent chain	Gear
Camshaft drive	90 mm (3.55")	90 mm (3.55")	98 mm (3.86")
Bore	106 mm (4.16")	106 mm (4.16")	105 mm (4.13")
Stroke	9.8:1	9.2:1	16.7:1
Compression ratio	300 @ 5000	362 @ 4750	350 @ 3000*
Horsepower (hp @ rpm)	365 @ 3750	457 @ 3250	650 @ 2000*
Torque (lb.-ft. @ rpm)	Unleaded	Unleaded	Ultra-Low-Sulfur Diesel
Recommended fuel			

\*Governed at 325 hp @ 3000 rpm and 600 lb.-ft. of torque @ 2000 rpm on F-450 with 6-speed manual, or on F-450 with automatic transmission and 4.88 rear axle.

## WHEELS



17" Argent-Painted Steel



18" Argent-Painted Steel



17" Chrome-Clad Steel



18" Chrome-Clad Steel



18" Forged Polished-Aluminum



18" Premium Chrome-Clad Steel



18" Premium Forged Polished-Aluminum



18" KING RANCH® Painted Forged Polished-Aluminum



20" Forged Polished-Aluminum



20" KING RANCH Premium Painted Forged-Aluminum



17" Forged Polished-Aluminum



17" KING RANCH Forged Polished-Aluminum



19.5" Forged Polished-Aluminum



19.5" KING RANCH Forged Polished-Aluminum



17" Argent-Painted Steel

## EXTERIOR COLOURS



Oxford White



Pueblo Gold Metallic\*\*



Red



Dark Toreador Red Metallic



Forest Green Metallic\*\*



Dark Blue Pearl Metallic\*\*



Silver Metallic



Dark Shadow Grey Metallic



Dark Stone Metallic



Black



Dark Copper Metallic

Ford uses clearcoat paint for beauty and protection. Colours shown are representative only. Not all colours are available on all models. See your dealer for actual paint/trim options.

## INTERIOR COLOURS

### CAMEL

#### MEDIUM STONE

##### XL/XLT

- ● Oxford White
- ● Pueblo Gold Metallic
- ● Red
- ● Dark Toreador Red Metallic
- ● Forest Green Metallic
- ● Dark Blue Pearl Metallic
- ● Silver Metallic
- ● Dark Shadow Grey Metallic
- ● Dark Stone Metallic
- ● Black

##### XL/XLT (DRW Crew Cab 6 3/4' box)

- ● Oxford White
- ● Black

##### XLT TWO-TONE

- Oxford White/Pueblo Gold Metallic
- Oxford White/Silver Metallic
- Dark Toreador Red Metallic/Pueblo Gold Metallic
- Dark Toreador Red Metallic/Silver Metallic
- Forest Green Metallic/Pueblo Gold Metallic
- Forest Green Metallic/Silver Metallic
- Dark Blue Pearl Metallic/Pueblo Gold Metallic
- Dark Blue Pearl Metallic/Silver Metallic
- Black/Pueblo Gold Metallic
- Black/Silver Metallic

##### XLT SPORT PACKAGE

- Oxford White
- Red
- Dark Blue Pearl Metallic
- Dark Shadow Grey Metallic
- Black

##### LARIAT

- ● Oxford White
- ● Pueblo Gold Metallic
- ● Red
- ● Dark Toreador Red Metallic
- ● Forest Green Metallic
- ● Dark Blue Pearl Metallic
- ● Silver Metallic
- ● Dark Shadow Grey Metallic
- ● Dark Stone Metallic
- ● Black

##### LARIAT TWO-TONE

- Oxford White/Pueblo Gold Metallic
- Oxford White/Silver Metallic
- Pueblo Gold Metallic/Black
- Dark Toreador Red Metallic/Pueblo Gold Metallic
- Dark Toreador Red Metallic/Silver Metallic
- Forest Green Metallic/Pueblo Gold Metallic
- Forest Green Metallic/Silver Metallic
- Dark Blue Pearl Metallic/Pueblo Gold Metallic
- Dark Blue Pearl Metallic/Silver Metallic
- Dark Shadow Grey Metallic/Black
- Dark Stone Metallic/Pueblo Gold Metallic
- Black/Pueblo Gold Metallic
- Black/Silver Metallic

##### KING RANCH PACKAGE\*

- Oxford White/Pueblo Gold Metallic
- Forest Green Metallic/Pueblo Gold Metallic
- Dark Blue Pearl Metallic/Pueblo Gold Metallic
- Black/Pueblo Gold Metallic
- Dark Copper Metallic/Pueblo Gold Metallic

\*\*New for 2008. \*Camel interior with Chaparral leather-trimmed seats.

### MEDIUM STONE

#### MEDIUM STONE WITH BLACK

##### FX4\*\* (Black seats)

- ● Oxford White
- ● Red
- ● Dark Blue Pearl Metallic
- ● Silver Metallic
- ● Black

##### FX4 TWO-TONE\*\* (Black seats)

- ● Oxford White/Dark Shadow Grey Metallic
- ● Red/Dark Shadow Grey Metallic
- ● Dark Blue Pearl Metallic/Dark Shadow Grey Metallic
- ● Silver Metallic/Dark Shadow Grey Metallic
- ● Black/Dark Shadow Grey Metallic



Camel Vinyl



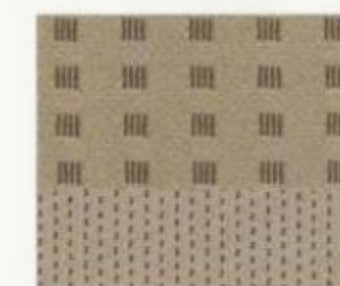
Medium Stone Vinyl



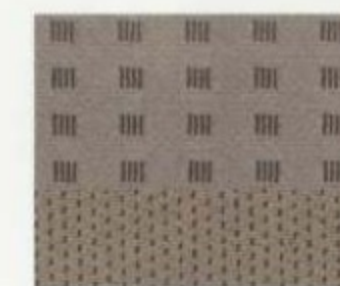
Camel Cloth



Medium Stone Cloth



Camel Premium Cloth



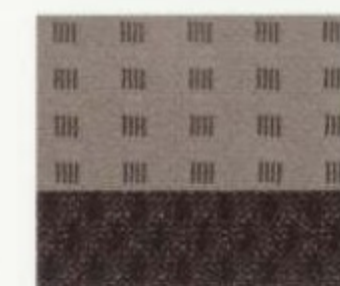
Medium Stone Premium Cloth



Camel Leather



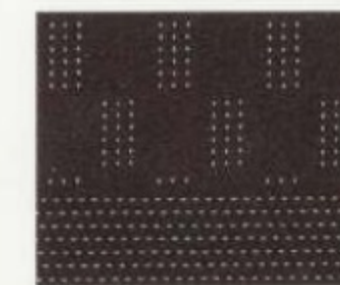
Medium Stone Leather



Medium Stone Two-Tone Cloth



Chaparral Leather (KING RANCH)



FX4 Cloth



FX4 Leather

NOTE: Fabric patterns and colours are subject to change or substitution without notice.



# NEW 2008 SUPER DUTY®

- 24,500 lbs. (11,113 kg) 5th-Wheel Towing
- 16,000 lbs. (7257 kg) Conventional Towing
- 6120 lbs. (2776 kg) Payload • 14,500 lbs. (6577 kg) GVWR
- 33,000 lbs. (14,969 kg) GCWR • 6500 lbs. (2948 kg) Front GAWR

**BEST-IN-CLASS\* CAPABILITY FROM CANADA'S BEST-SELLING LINE OF PICKUP TRUCKS FOR 40 YEARS\* FORD F-SERIES\*\***



## ONLY FROM SUPER DUTY

- F-450 Pickup
- PowerScope™ Power-Telescoping/  
-Folding Trailer Tow Mirrors Available
- Tailgate Step Option
- Stowable Bed Extender Option
- Rapid-Heat Supplemental Cab Heater Option
- Quiet Steel® in Dash Panel
- Standard Box-Rail Mouldings
- Upfitter Switches Option
- Standard Hitch Receivers on All Models
- All-New 6.4L Power Stroke® 32-Valve V8 Turbo Diesel
- Best-in-Class Gas Horsepower & Torque 6.8L Triton® V10 3-Valve with SEFI

\*Class is Full-size Pickups over 8500 lbs. (3856 kg) and up to 16,000 lbs. (7257 kg) GVWR.

\*\*Based on Canadian Vehicle Manufacturers' Association statistical sales report, December 2005.

For more information on  
Ford of Canada and Ford products,  
please visit our website:

[ford.ca](http://ford.ca)

or [fleet.ford.ca](http://fleet.ford.ca)

### Our commitment to you... Peace-of-Mind Protection

- Basic Coverage: 3 years/60,000 km
- Gas Powertrain Warranty: 5 years/100,000 km
- Direct-Injection Diesel Engine: 5 years/160,000 km
- Diesel Powertrain Warranty: 5 years/160,000 km
- Corrosion Warranty: 5 years/unlimited distance
- Roadside Assistance: 5 years/60,000 km<sup>1</sup>

Certain conditions apply. For more information on these warranties and coverages, ask your local Ford of Canada Dealer or visit [www.ford.ca](http://www.ford.ca). <sup>1</sup>No additional cost.

### For prompt, courteous answers to your questions:

Ford Customer Relationship Centre  
1-800-565-3673  
Ford Credit Customer Service Centre  
1-877-636-7346

Competitive comparisons are based on 2007 competitive models, publicly available information and Ford data at the time of printing. Some features discussed may be optional. Vehicles shown may contain optional equipment. Features shown may be offered only in combination with other options or subject to additional ordering requirements or limitations. Dimensions shown may vary due to optional features and/or production variability. Following publication of this catalogue, certain changes in standard equipment, options and the like, or product delays may have occurred which would not be included in these pages. Your Ford of Canada Dealer is your best source for up-to-date information. Ford Motor Company of Canada, Limited, reserves the right to change product specifications at any time without incurring obligations. Colours may not be exactly as illustrated due to restrictions of the printing process. Please see your sales consultant for specific colour and model availability.

© 2006 Ford Motor Company of Canada, Limited