

2008 SPORT TRAC





fordvehicles.com



Sport Trac XLT in Silver Birch Metallic and Sport Trac Limited in Dark Cherry Metallic, both with available equipment

READY. SET. GO. THE 2008 FORD SPORT TRAC.

Can't wait to hit the trails, dominate the slopes or just hang out in Red Rock country? Sport Trac is ready for your kind of action. Its versatile cargo box is made of a composite material that resists dents and scratches. The optional V8 engine churns out a gutsy 292 hp. The power-sliding rear window and all 6 airbags are now standard. And our optional Control Trac® 4-wheel drive gives you serious off-road ability. It's time to go.



fordvehicles.com

292-HP V8
AVAILABLE.

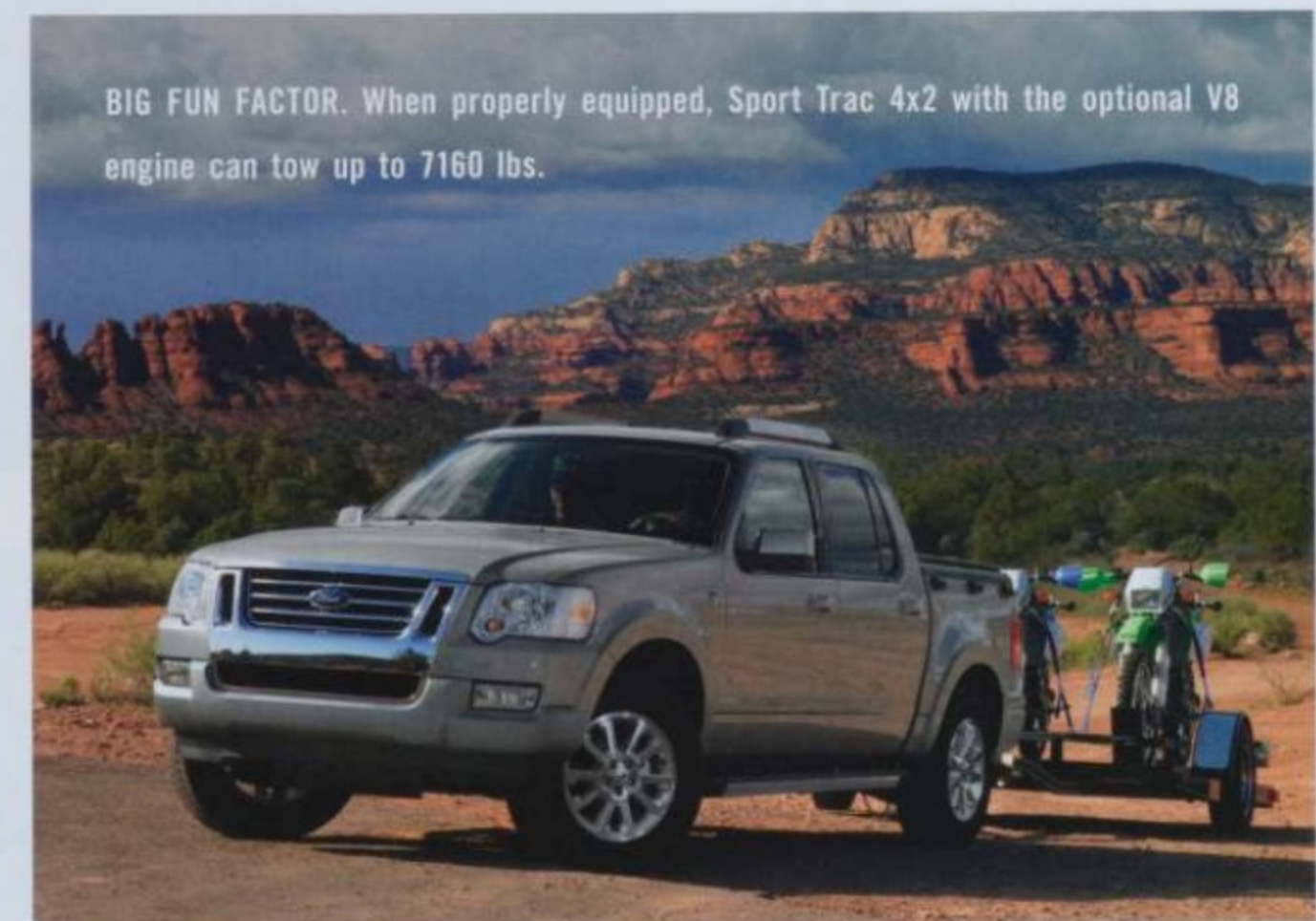
EMPOWER YOURSELF TO
RISE ABOVE.



3
Power

POWERHOUSE. Variable camshaft timing and a free-breathing, 3-valve head design help Sport Trac's optional 4.6L V8 engine deliver its mighty 292 hp.

BIG FUN FACTOR. When properly equipped, Sport Trac 4x2 with the optional V8 engine can tow up to 7160 lbs.



Sport Trac Limited in Vapor Silver Metallic with available equipment

Whether you're headed for the open road or out into the backcountry, Sport Trac's optional 4.6L 3-valve V8 engine and 6-speed automatic transmission are designed to tackle it all with confidence. This sophisticated duo cranks out a vigorous 292 hp at 5750 rpm and 300 lb.-ft. of torque at 3950 rpm. The electronically controlled 6-speed delivers peak power when you need it, such as during acceleration or when

climbing a hill, and peak efficiency whenever possible. Of course, the standard 4.0L SOHC V6 engine and 5-speed automatic transmission are also built to hold their own, pumping out a substantial 210 hp and 254 lb.-ft. of torque. Wherever you may roam, you can rely on Sport Trac's fully boxed frame and 4-wheel independent suspension to help it deliver a notably quiet ride and remarkably agile, responsive handling.



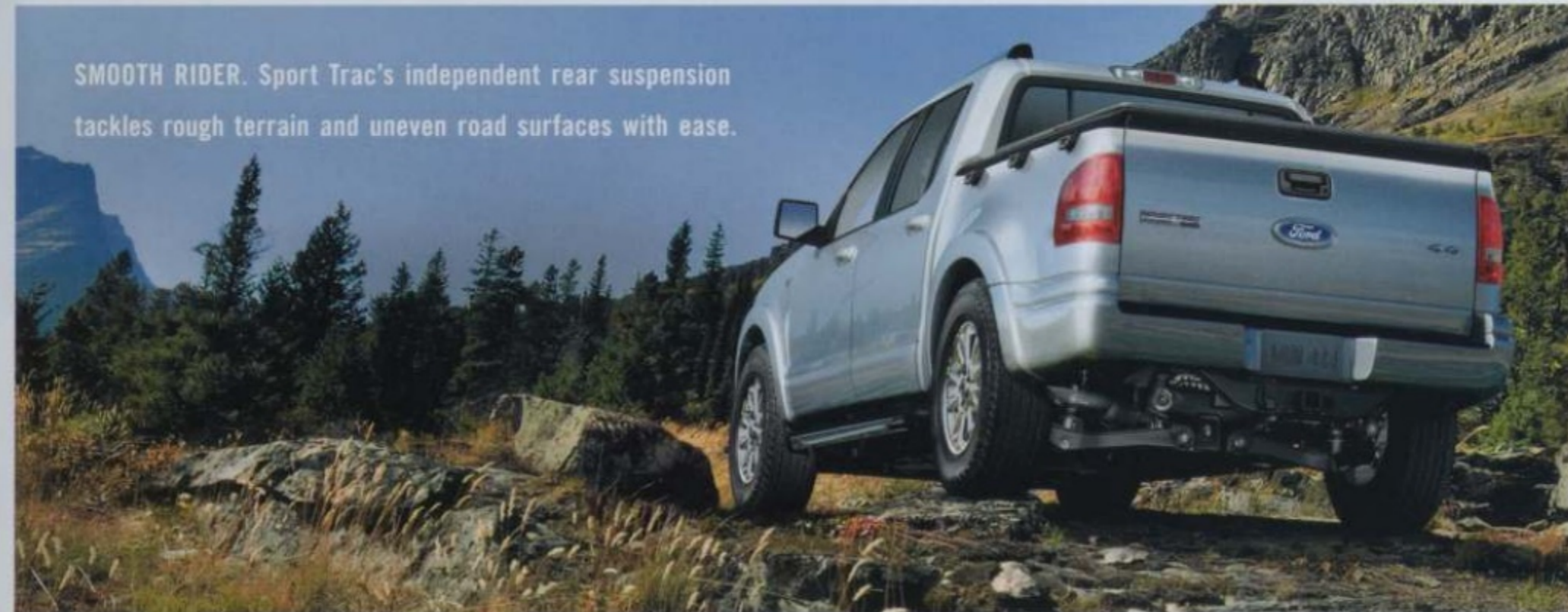
fordvehicles.com

Sport Trac Limited in Redfire Metallic with available equipment

CONQUER THE TRAIL LESS TRAVELED.

4x4

There's nothing quite like a 4x4 trail ride for taking your mind off of life's everyday stresses. Sport Trac 4x4 with the optional Control Trac® 4-wheel-drive system has what it takes to get you out where the air is clear. Control Trac serves up extra traction on demand, taking you from everyday driving in the convenient 4x4 AUTO mode to serious rock-crawling in the 4x4 LOW mode at the touch of a button. When traveling on icy roads, in snow or in less-challenging off-road situations, choose the 4x4 HIGH setting. It's all about versatility.



SMOOTH RIDER. Sport Trac's independent rear suspension tackles rough terrain and uneven road surfaces with ease.

5
4x4

CONSIDER IT YOUR ADVENTURE
COMMAND CENTER.



fordvehicles.com

Sport Trac Limited leather-trimmed interior in Camel with available equipment

SIRIUS
SATELLITE RADIO
THE BEST RADIO ON RADIO

The intuitive layout of Sport Trac's instrument panel makes it easy for you to jump in and take charge. New for 2008, a luxurious leather-wrapped steering wheel is now standard. And for your listening pleasure, every Sport Trac gets an auxiliary audio input jack you can use to listen to music from your MP3 player over the vehicle's sound system. The optional Audiophile® Sound System gives you a 6-disc in-dash CD

changer with MP3 capability and an 8" subwoofer with its own dedicated amplifier. Plus, you can add SIRIUS Satellite Radio,² with its 130+ channels of coast-to-coast sports, news, entertainment and 100% commercial-free music, to any Sport Trac sound system. Also new for 2008, voice activation on the optional Navigation System allows you to keep both hands on the wheel as you track down your next great adventure.

²Service not available in Alaska or Hawaii. See your Ford Dealer or contact SIRIUS at 1-888-539-7474 for more information.



POWER PLAY. The convenience of a power-sliding rear window is now standard on every Sport Trac.



THINK FAST. Sport Trac's optional power moonroof includes a smart one-touch-open/-close feature.



HALF THE TIME. Sport Trac's optional class-exclusive¹ heated windshield clears in about half the time it takes a conventional forced-air system.

¹Sport Utility Truck class.

7
Driver Controls

RECHARGE IN RUGGED
REFINEMENT.



**44.4 CU. FT.
OF INTERIOR
CARGO SPACE
WITH REAR SEAT
FOLDED FLAT.**

fordvehicles.com

Sport Trac Limited leather-trimmed interior in Camel with available equipment



STYLE MEETS COMFORT. This eye-catching two-tone, leather-trimmed seating is optional on Sport Trac Limited. It includes heated front seats with handy seatback map pockets: 10-way power-adjustable for the driver (including power lumbar and recline) and 4-way manual-adjustable for the passenger.



MORE THAN MOVIES. Sport Trac's optional Rear-Seat DVD Entertainment System is just the thing to keep those in the back happy on long and short trips alike. The system includes an 8" color LCD flip-down screen, 2 sets of wireless headphones and an infrared remote control. Use it to play DVDs, CDs and even video games when you bring your compatible gaming system along for the ride.

9
Interior
Comfort

From the foundation up, Sport Trac is designed to help you relax between adventures. Its exceptionally stiff frame contributes to the extremely quiet ride. And the latest lightweight materials help insulate key areas like the doors, instrument panel and headliner. Even the standard molded-rubber flooring and heavy-duty berber floor mats help keep road noise where it belongs: outside. Up front, standard overhead and center floor

consoles give you plenty of places to stow your favorite CDs and other small stuff close at hand. In back, the standard 60/40 split seat easily accommodates up to 3 adults and includes articulating head restraints for outboard passengers, which can be flipped forward when not in use to open up your view through the rear window. Sport Trac's interior really is all about comfort. You'll find it's the perfect place to relax – anytime.

BE PREPARED TO GO ALL IN.



BELOW DECK. Removable drain plugs and weather-resistant lids make Sport Trac's 3 cargo box gear bins perfect for stuff you want to keep wet or dry.



SECURE SITUATION. The cargo box features a total of 10 integrated tie-down hooks, including 3 of these beefy cleats down each side of its exterior.



UNDER COVER. Hinged in the middle for ease of use, the optional, locking, hard tonneau cover can also be removed to open up access to the entire box.

**DENT-PROOF,
SCRATCH-
RESISTANT
CARGO BOX.**

fordvehicles.com



Sport Trac Limited in Redfire Metallic with available equipment

11
Cargo Box

Think you may need it? Toss it in. Sport Trac's versatile cargo box holds up to 37.5 cu. ft. of gear. And another 6+ cu. ft. with the optional cargo cage bed extender in place and the tailgate open. The extender also works as a partition with the tailgate closed. The cargo box's corrosion-proof, sheet-molded, composite exterior takes muddy trails in stride, while the dent-proof, scratch-resistant, molded inner liner withstands the worst.

Special notches inside the box can be used to help create tiered storage perfect for carrying 4' x 8' sheets of plywood with the tailgate open. As always, Sport Trac's standard cargo box power point is ready to supply the juice for your portable air compressor, cooler or anything else with a compatible adapter cord. And now that the power-sliding rear window is standard on all models, it'll be even easier to access all your stuff.

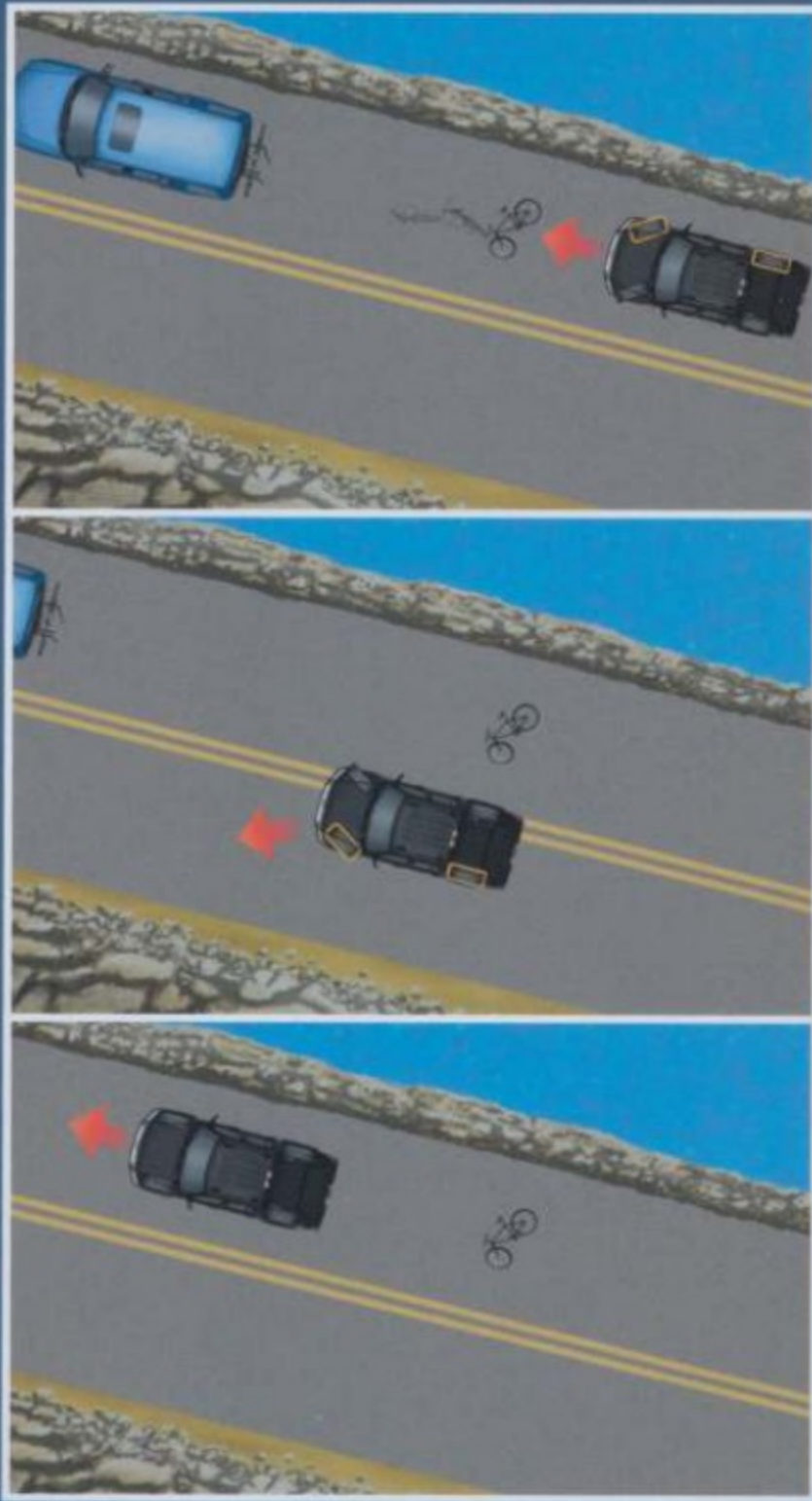
Cargo and load capacity limited by weight and weight distribution.

ENJOY A NIGHT OUT, SPORT TRAC STYLE.

13
Sport Trac



TRUST ITS INNATE STABILITY.



ASSISTANCE ON DEMAND. AdvanceTrac with RSC can help in many real-world situations, such as when you're making an emergency maneuver to avoid something in the road; driving on slippery surfaces like snowy, muddy, wet or gravel roads; or just traveling on uneven surfaces, such as in construction zones.

Remember that even advanced technology cannot overcome the laws of physics. It's always possible to lose control of a vehicle due to inappropriate driver input for the conditions. For more information on AdvanceTrac with RSC, visit fordvehicles.com.



ADVANCETRAC[®]
WITH
EXCLUSIVE RSC[®]
IS STANDARD
ON EVERY
SPORT TRAC.

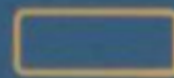
15
Safety &
Security

LEGEND

Vehicle inertia



Brakes activating
to maintain control



fordvehicles.com

Sport Trac Limited in Black with available equipment

Whether adventure leads you up snow-covered country lanes or around bustling city streets, you can count on Sport Trac's cutting-edge safety and security features to be there, behind the scenes, helping protect you and your loved ones. A perfect example: AdvanceTrac with class-exclusive RSC (Roll Stability Control™), our standard electronic stability enhancement system. It uses a unique vehicle-roll motion sensor to directly measure

the vehicle's roll rate, which other manufacturers' systems ignore or can only estimate. Our system checks the rate 100 times every second to help decide when and how it should engage the Anti-lock Brake System (ABS), traction control and yaw control to apply individual brakes and modify engine power, ultimately helping you keep all 4 wheels firmly planted. This remarkable system is not available on any of the competition.

STANDARD FOR 2008:
ALL 6 AIRBAGS.



fordvehicles.com

Sport Trac XLT in Silver Birch Metallic with available equipment

That's right. All 6 airbags are now standard on every Ford Sport Trac. You get the adaptive front airbags in our class-exclusive Intelligent Safety System™ (ISS), plus front-seat side airbags, and the side-curtain airbags in our patented Safety Canopy™ System. All standard. And always at the ready. A suite of sophisticated sensors is constantly feeding information to the ISS so it can adjust the performance of the adaptive front airbags, adaptive load-limiting safety belt retractors and adaptive stroking steering column to enhance your protection in the event of certain frontal collisions. The large side-curtain airbags enhance protection for outboard-seated occupants in the front and rear. And to top it off, Sport Trac is designed to meet all known U.S. government-regulated frontal and side-impact crash requirements through the 2010 model year.

5-STAR SAFETY RATINGS



Sport Trac received 5-Star ratings¹
in the National Highway Traffic Safety
Administration's (NHTSA) Frontal
and Side-Impact crash tests.

¹2007 model year.

SMART TECH. Adaptive venting helps tailor the power of the front airbags to each occupant's size and needs, while an adaptive airbag tether helps tailor the shape and size of the front-passenger airbag.

BUILT TO GIVE. In the event of a frontal crash, Sport Trac's adaptive stroking steering column works like a shock absorber, in conjunction with your safety belt and the front airbag, to help reduce the impact to your chest.



17
Safety &
Security

FIND YOUR MATCH.

DIMENSIONS



EXTERIOR (in.)	4x2/4x4	
A. Vehicle length	210.2	
B. Wheelbase	130.5	
C. Overhang – Front	35.4	
D. Overhang – Rear	44.3	
E. Vehicle width – Excluding mirrors	73.7	
	Including mirrors	84.8
F. Height (with options)	72.5	
G. Minimum running ground clearance	8.4	
H. Open tailgate to ground	30.9	
I. Ramp breakover angle	17.2°	
J. Angle of approach	28.7°	
K. Angle of departure	17.2°	

INTERIOR (in.)	4x2/4x4
Front	
Head room	39.8
Shoulder room	59.0
Hip room	55.4
Leg room	42.4
Rear	
Head room	38.5
Shoulder room	58.9
Hip room	55.5
Leg room	36.9
Cargo Volume (cu. ft.)	
Behind front seat	44.4
Cargo box	37.5

Cargo and load capacity limited by weight and weight distribution.

Ready to plan your next Sport Trac adventure? Start with your choice of 2 well-equipped models: the spirited XLT and the luxurious Limited.

Limited includes the standard equipment of XLT, except where additions/exceptions are noted.

XLT

16" painted-aluminum wheels • Black exterior accents • 3-bar chrome grille with nostrils • Fog lamps • Power sideview mirrors with security approach lamps • Power windows • Power-sliding rear window • Auxiliary audio input jack • Cloth front bucket seats with 2-way head restraints • Leather-wrapped steering wheel • Molded-rubber flooring • Heavy-duty berber floor mats • 2-line message center with outside temperature display and compass • Cruise control

Limited

18" machined-aluminum wheels • Monochromatic exterior appearance • Automatic headlamps • Silver-painted roof side rails and step bars • Keyless-entry keypad • 2-tone cloth front bucket seats with 6-way power driver seat and 4-way manual passenger seat • Leather-wrapped shift knob • Auto-dimming rearview mirror

19
Sport Trac





fordaccessoriesstore.com

Sport Trac Limited in Silver Birch Metallic
with select Genuine Ford Accessories

GENUINE FORD ACCESSORIES.

21
Sport Trac



BED MAT



REMOTE START SYSTEM



ALL-WEATHER FLOOR MATS



BED EXTENDER

Engineered by Ford for excellent fit and long-wearing durability, Genuine Ford Accessories offer you serious style and quality. When installed by your Ford Dealer at the time of purchase or lease, they're backed by a 3-year/36,000-mile Limited Warranty.¹ And now, Ford's vehicle Accessorizer puts personalization in the fast lane. This exciting online tool lets you see how Genuine Ford Accessories

will look on your new 2008 Ford Sport Trac or any other Ford, Lincoln or Mercury vehicle. Take it for a test drive today at fordaccessoriesstore.com.

¹12-month/12,000-mile limited warranty if Genuine Ford Accessories are not installed by a Ford Dealer or are purchased after initial vehicle sale or lease. See your dealer for details.



fordaccessoriesstore.com

STANDARD FEATURES

MECHANICAL

4.0L SOHC V6 engine with 5-speed automatic transmission
4-wheel Anti-lock Brake System (ABS)
Class II trailer tow hitch receiver
Control Trac® 4-wheel-drive system (4x4 models only)
Independent front and rear suspensions
Non-limited-slip rear axle – 3.73 ratio

SAFETY/SECURITY

Adaptive driver and front-passenger front airbags¹
Adaptive steering column
AdvanceTrac® with RSC® (Roll Stability Control™)
Belt-Minder® safety belt reminder
Front-Passenger Sensing System
Front-seat side airbags¹
Safety belts with pretensioners and adaptive load-limiting retractors (height-adjustable in front row)
Safety Canopy™ System with side-curtain airbags and rollover sensor¹
SecuriLock® passive anti-theft ignition system
Tire Pressure Monitoring System

INTERIOR

2-line message center with outside temperature display and compass
60/40 split-folding rear seat
Air conditioning – Manual
AM/FM stereo/single-CD player with MP3 capability
Auxiliary audio input jack
Coat hooks – 2
Cruise control – Steering wheel-mounted
Floor console with floor shifter
Front dome/map lights
Grab handles – 1 for front passenger and 2 in rear
Illuminated glove compartment
Large overhead console
LATCH – Lower anchors and tether anchors for child-safety seats in 2nd-row outboard seats
Leather-wrapped steering wheel with secondary audio controls
Power points – 2
Power windows with one-touch-down driver-side feature
Tilt steering column

EXTERIOR

16" painted-aluminum wheels
P235/70R16 all-season OWL tires
Cargo box – Composite material with 3 storage bins
Fog lamps
Grille – Chrome, 3-bar design with nostrils
Power point – Cargo box
Power sideview mirrors with security approach lamps
Rear window – Power-sliding
Tie-downs – Cargo box

¹Always wear your safety belt and secure children in the rear seat.

FEATURES & OPTIONS

XLT – 4x2 or 4x4	
LIMITED – 4x2 or 4x4	
MECHANICAL	
<input type="checkbox"/>	4.6L 3-valve V8 with 6-speed automatic transmission and non-limited-slip rear axle – 3.55 ratio
<input checked="" type="checkbox"/>	16" painted-aluminum wheels
<input type="checkbox"/>	17" painted-aluminum wheels (only available with XLT Appearance Package)
<input checked="" type="checkbox"/>	18" machined-aluminum wheels
<input type="checkbox"/>	18" chrome-clad aluminum wheels (only available with Limited Chrome Package)
<input checked="" type="checkbox"/>	P235/70R16 all-season OWL tires
<input type="checkbox"/>	P245/65R17 all-season OWL tires (only available with XLT Appearance Package)
<input checked="" type="checkbox"/>	P235/65R18 all-season OWL tires
SAFETY/SECURITY	
<input type="checkbox"/>	Reverse Sensing System
SEATING	
<input checked="" type="checkbox"/>	Cloth trim – Front bucket seats with 2-way adjustable head restraints
<input type="checkbox"/>	Cloth trim – Two-tone front bucket seats with 2-way adjustable head restraints and seatback map pockets; 6-way power driver seat with manual lumbar; and 4-way manual passenger seat
<input type="checkbox"/>	Leather trim – Two-tone front, heated bucket seats with 2-way adjustable head restraints and seatback map pockets; 10-way power driver seat including power lumbar; and 4-way manual passenger seat with manual lumbar
INTERIOR	
<input type="checkbox"/>	Audiophile® Sound System with AM/FM stereo/6-disc in-dash CD changer with MP3 capability and 8" subwoofer
<input checked="" type="checkbox"/>	Auto-dimming rearview mirror
<input checked="" type="checkbox"/>	Leather-wrapped shift knob
<input type="checkbox"/>	DVD-based Navigation System ² – Includes Audiophile Sound System, secondary steering wheel-mounted controls and voice activation
<input type="checkbox"/>	Power-adjustable pedals
<input type="checkbox"/>	Power moonroof with shade and one-touch-open/-close feature
<input type="checkbox"/>	Rear-Seat DVD Entertainment System
<input type="checkbox"/>	SIRIUS Satellite Radio – Includes 6-month prepaid subscription
EXTERIOR	
<input type="checkbox"/>	Automatic headlamps (only available on XLT with XLT Convenience Package)
<input checked="" type="checkbox"/>	Bumpers, sideview mirrors, door handles and wheel-lip moldings – Black, molded-in-color
<input checked="" type="checkbox"/>	Bumpers, sideview mirror caps, door handles and wheel-lip moldings – Body-color-painted
<input type="checkbox"/>	Cargo cage bed extender
<input type="checkbox"/>	Heated windshield – Includes heated sideview mirrors
<input checked="" type="checkbox"/>	Roof side rails – Black
<input checked="" type="checkbox"/>	Roof side rails – Silver-painted
<input type="checkbox"/>	Roof-rail crossbars – Black
<input checked="" type="checkbox"/>	Step bars – Silver-painted
<input type="checkbox"/>	Tonneau cover – Hard, locking

● Standard ● Select Availability ○ Optional — Not Available

²Includes auto-dimming rearview mirror on XLT.

© 2007 SIRIUS Satellite Radio Inc. "SIRIUS," the SIRIUS dog logo and "The Best Radio on Radio" are registered trademarks of SIRIUS Satellite Radio Inc.

Audiophile is a registered trademark of Audiophile, Inc.

XLT – 4x2 or 4x4

LIMITED – 4x2 or 4x4

PACKAGES

- Class III/IV Trailer Tow Package – Includes 7-pin trailer wiring harness and connector, and frame-mounted hitch receiver
- Convenience Package – Includes auto-dimming rearview mirror, automatic headlamps and illuminated keyless-entry keypad
- Limited Chrome Package – Includes 18" chrome-clad aluminum wheels, chrome sideview mirror caps, chrome roof side rails and chrome step bars
- Limited Electronics Package – Includes Dual-zone Electronic Automatic Temperature Control and 4-line message center
- XLT Appearance Package – Includes 17" painted-aluminum wheels, P245/65R17 all-season OWL tires and black step bars

ENGINES

	4.0L SOHC V6	4.6L 3V V8
Horsepower (hp @ rpm)	210 @ 5100	292 @ 5750
Torque (lb.-ft. @ rpm)	254 @ 3700	300 @ 3950

TRAILER TOWING APPLICATIONS

MAXIMUM LOADED TRAILER WEIGHT (lbs.)

AXLE RATIO	4.0L SOHC V6		AXLE RATIO	4.6L 3V V8	
3.73	4x2 Class II	3500	3.55	4x2 Class II	3500
	4x4 Class II	3500		4x4 Class II	3500
	4x2 Class III/IV	5260		4x2 Class III/IV	7160
	4x4 Class III/IV	5090		4x4 Class III/IV	7000

Maximum weights shown are for properly equipped vehicles with required equipment and a 150-lb. driver. Weight of additional options, equipment, passengers and cargo must be deducted from this weight. For additional information, see your Ford Dealer.

Cargo and load capacity limited by weight and weight distribution.

WHEELS

- A** 16" Painted-Aluminum Standard on XLT
- B** 17" Painted-Aluminum Included in XLT Appearance Package
- C** 18" Machined-Aluminum Standard on Limited
- D** 18" Chrome-Clad Aluminum Included in Limited Chrome Package



Comparisons based on 2007 competitive models, publicly available information and Ford certification data at time of printing. Some features discussed may be optional. Vehicles shown may contain optional equipment. Features shown may be offered only in combination with other options or subject to additional ordering requirements or limitations. Dimensions shown may vary due to optional features and/or production variability. Following publication of the catalog, certain changes in standard equipment, options and the like, or product delays may have occurred which would not be included in these pages. Your Ford Dealer is the best source for up-to-date information. Ford Division reserves the right to change product specifications at any time without incurring obligations.

COLORS AND TRIM.



Camel Cloth with Sand Inserts
Standard on XLT and Limited



Medium Light Stone Cloth¹
Standard on XLT



Charcoal Black Cloth with
Medium Light Stone Inserts
Standard on Limited



Camel Leather with Sand Inserts
Optional on Limited



Charcoal Black Leather with
Medium Light Stone Inserts
Optional on Limited

CAMEL

CHARCOAL BLACK

XLT

- ● White Suede²
- ● Stone Green Metallic²
- ● Redfire Metallic
- ● Dark Blue Pearl Metallic
- ● Silver Birch Metallic
- ● Vapor Silver Metallic²
- ● Black

LIMITED

- ● White Suede²
- ● Stone Green Metallic²
- ● Redfire Metallic
- ● Dark Blue Pearl Metallic
- ● Silver Birch Metallic
- ● Vapor Silver Metallic²
- ● Black
- ● Dark Cherry Metallic

¹Charcoal Black environment. ²New for 2008.



White Suede



Stone Green Metallic



Redfire Metallic



Dark Blue Pearl Metallic



Silver Birch Metallic



Vapor Silver Metallic



Black



Dark Cherry Metallic

Ford uses clearcoat paint for beauty and protection. Colors shown are representative only. Not all colors are available on all models. See your dealer for actual paint/trim options. Vehicles shown may contain optional equipment.



New Vehicle Limited Warranty

We want your Ford Sport Trac ownership experience to be the best it can be. So under this warranty, your new vehicle comes with 3-year/36,000-mile Bumper-to-Bumper Coverage, 5-year/60,000-mile Powertrain Warranty Coverage and Roadside Assistance, 5-year/50,000-mile Safety Restraint Coverage, and 5-year/unlimited-mile Corrosion (Perforation) Coverage — all with no deductible. Please ask your Ford Dealer for a copy of this limited warranty.

For more assurance: The 5-year/60,000-mile powertrain limited warranty is fully transferable, has no deductible, and provides you with an additional 2 years or 24,000 miles of coverage — on select components, including the engine and transmission — beyond the standard 3-year/36,000-mile Bumper-to-Bumper Coverage. Roadside Assistance is extended to 5 years or 60,000 miles, so you have the security of knowing that help may be only a phone call away should you run out of fuel, lock yourself out of the vehicle or need towing. Your Ford Dealer can provide complete details on all of these advantages.



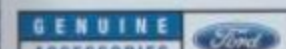
Get the ride you want. Whether you plan to lease or finance, you'll find the choices that are right for you at Ford Credit. Ask your Ford Dealer for details or check us out at fordcredit.com



Ford Motor Company Insurance Services
Get Ford Motor Company quality in your auto insurance. Our program offers industry-leading benefits and competitive rates. Call 1-877-367-3847, or visit us at fordvip.com for a no-obligation quote. Insurance offered by American Road Services Company (in CA, American Road Insurance Agency), a licensed agency and subsidiary of Ford Motor Company.



For a purchase or lease, the Ford **Extended Service Plan (ESP)** gives you "Peace-of-Mind" protection designed to cover key vehicle components and protect you from the cost of unexpected repairs. Ask your dealer for an ESP, the only service contract backed exclusively by Ford and honored at all Ford Lincoln Mercury dealerships.



Genuine Ford Accessories are designed and engineered specifically for Ford vehicles. Visit our website at fordaccessoriesstore.com to use the Accessorizer, and to learn about complete accessory details and purchase instructions.

The Right Ford for You

Whether you're looking for a vehicle that can handle rugged adventures in the wild, the hectic demands of your everyday life or a bit of both, the Ford family of SUVs and Crossovers has you covered. From the big-family fun of the 9-passenger Expedition EL to the pure excitement of the Edge, our extensive lineup of boldly designed vehicles features a full range of passenger and cargo capabilities, high-tech powertrains, smooth-riding suspensions and all the latest creature comforts.

Visit fordvehicles.com to find your perfect match.



Edge

The All-New Taurus X

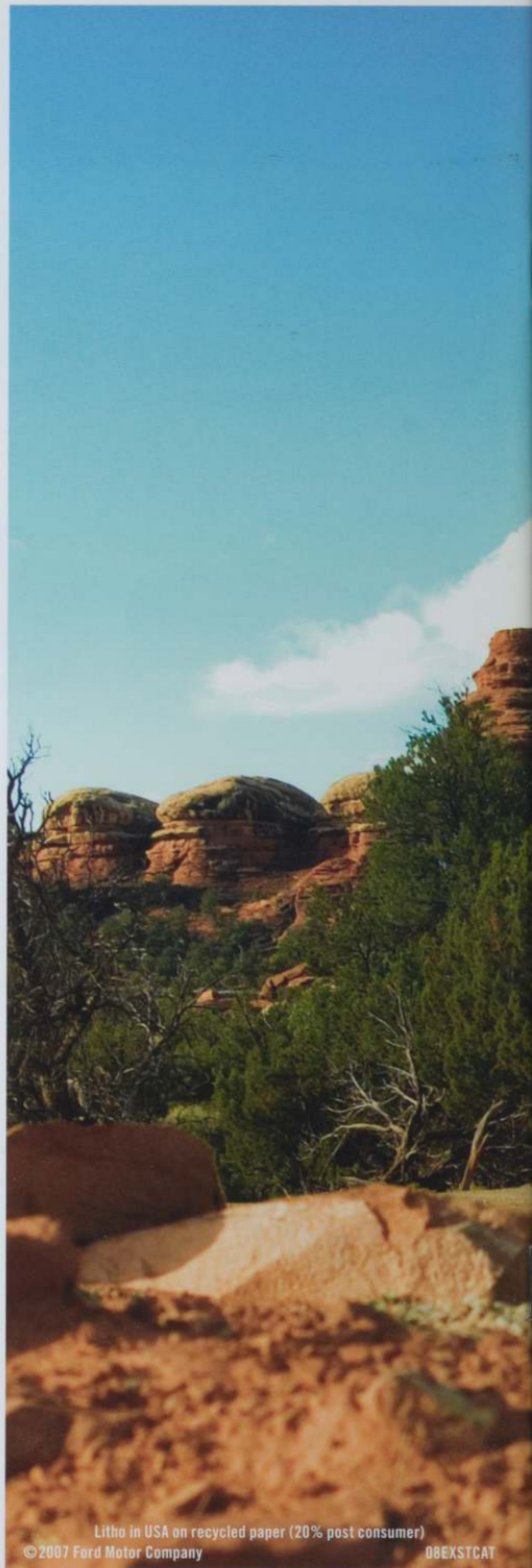


The New Escape & Escape Hybrid

Explorer



Expedition & Expedition EL



Litho in USA on recycled paper (20% post consumer)

© 2007 Ford Motor Company

0BEXSTCAT