

'08 Mercury Mountaineer



MERCURY | NEW DOORS OPENED



Make a Grand Entrance.

WITH MOUNTAINEER, FIRST IMPRESSIONS WILL BE LASTING ONES.

Your first step into new surroundings can leave quite an impression. So as Mountaineer Premier's available power-deployable running boards glide out to ease the way, rest assured that your entrance will not go unnoticed. Up front, the bold presence of Mountaineer's gleaming satin-aluminum-finish grille capably announces your arrival. Standard 17" machined-aluminum wheels on Mountaineer and 18" satin-aluminum wheels on Premier (shown) add to its already impressive stance. Red Light-Emitting Diode (LED) taillamps have clear lenses and artfully accented satin-aluminum-finish grilles, while subtle "Mercury" detailing sets off the bright step that anchors the rear bumper.

MOUNTAINEER PREMIER IN SILVER BIRCH METALLIC.



MOUNTAINEER PREMIER IN SILVER BIRCH METALLIC. SHOWN WITH AVAILABLE EQUIPMENT.



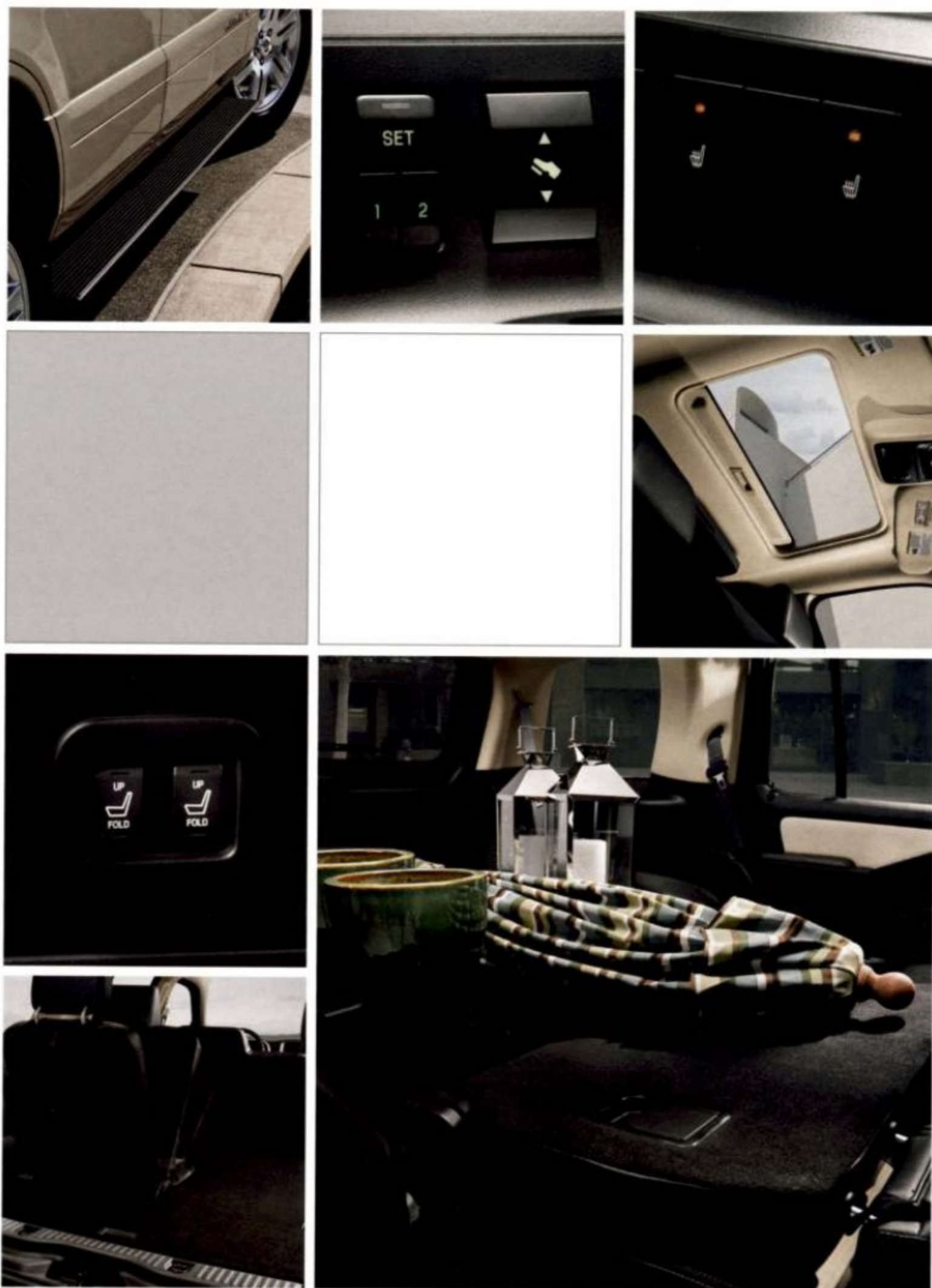
SOPHISTICATED STYLING. REMARKABLE COMFORT.

"What an absolutely beautiful-looking vehicle, inside and out," says *AutoWeek*. For proof, just begin in Mountaineer Premier with the standard 10-way power driver seat and two-tone leather-trimmed seats in your choice of stunning Charcoal Black (shown) or Camel with Sand Alcantara® inserts. In the 2nd row, a standard 60/40 split seat completes the interior for 5-passenger models. For 6-passenger seating, select the available quad bucket seating with 2nd-row center console. And if you need seating for 7 (shown), Mountaineer can be outfitted with the 60/40 split seat in the 2nd row and the 50/50 split seat behind that. A manual-fold version of the 3rd-row seat is standard on Premier and optional on Mountaineer, while the handy, first-in-class¹ PowerFold™ 3rd-row seat is optional on Mountaineer Premier.

¹Truck-based midsize SUV class.

MOUNTAINEER PREMIER LEATHER-TRIMMED SEATS IN CHARCOAL BLACK WITH SAND ALCANTARA INSERTS.





POWERFULLY PERSUASIVE.

The many creature comforts of a Mountaineer Premier equipped with the available Amenities Package may just convince you to circle the block a few more times while looking for that parallel parking space. Its Reverse Sensing System will tell you when it's time to stop as you slowly back in, and the power-deployable running boards will slide out to greet your feet and help you down to the pavement.

Other power features that make your life easier include available power-adjustable pedals; available heated, leather-trimmed seats; and an available power moonroof that lets the sun shine in. On Premier models, a PowerFold™ 3rd-row seat is available as part of the 3rd-row Seat Elite Package. The PowerFold buttons make quick, easy work of folding down the seat, opening up 43.9 cu. ft. of cargo space behind the 2nd row.

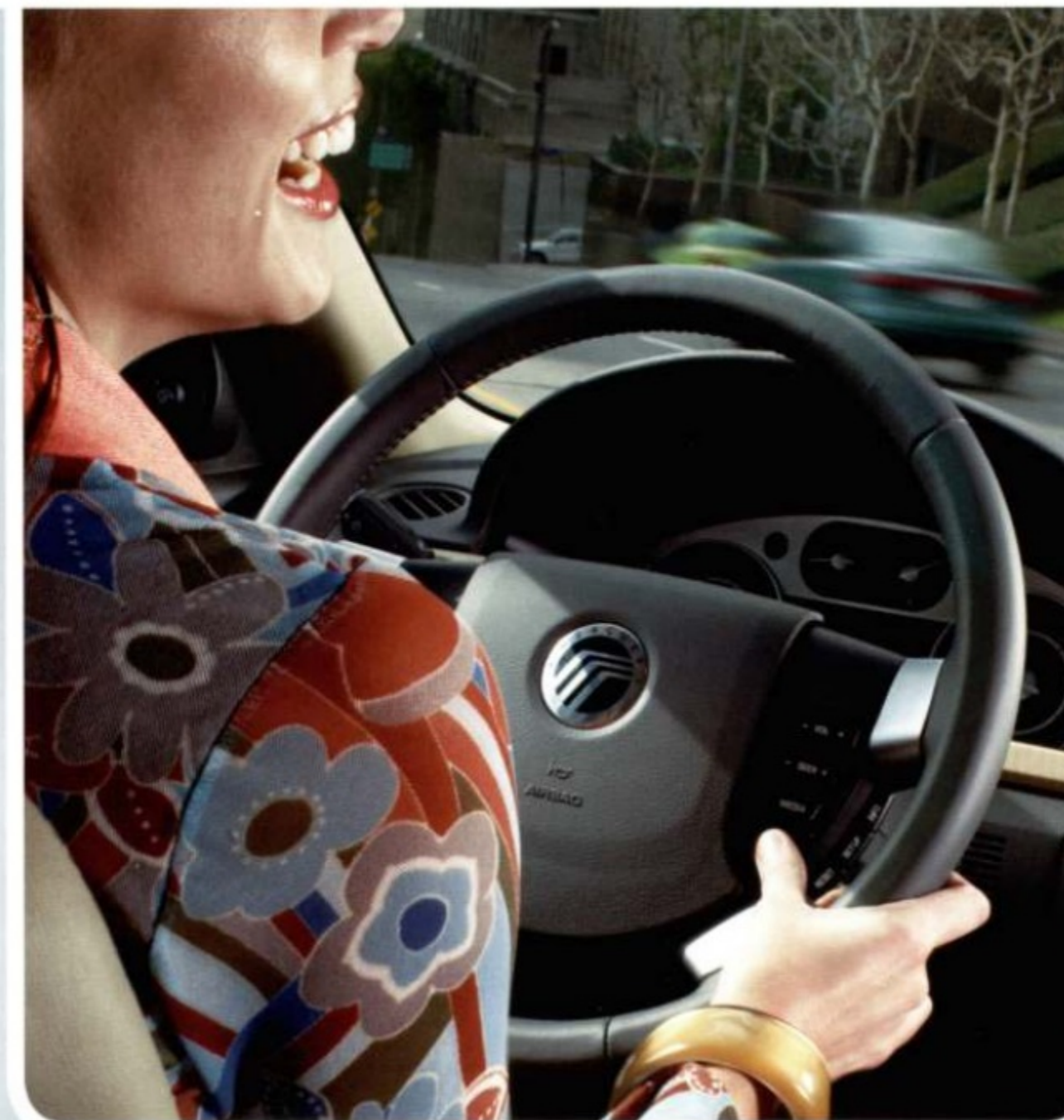
A manual-fold version of the 3rd-row seat is standard on Premier and available on Mountaineer as part of the 3rd-row Seat Package. On 7-passenger models, Mountaineer's 2nd- and 3rd-row seats fold down to provide a spacious 83.7 cu. ft. of loadable room.



**PACKAGED JUST RIGHT.**

A host of new packages this year will help you tailor Mountaineer exactly to your liking. If you prefer pampering, select the available Comfort Package on Mountaineer and you'll be treated to heated, leather-trimmed bucket seats, a 10-way power driver seat with power lumbar, a 6-way power passenger seat and Dual-zone Electronic Automatic Temperature Control. On Mountaineer Premier, the available Amenities Package provides power-deployable running boards, a Universal Garage Door Opener and a Reverse Sensing System. If entertainment suits you more, the available Moon & Tune Elite Package on both models includes a power moonroof, an Audiophile® Sound System with 6-disc CD changer and SIRIUS Satellite Radio.¹ A courtesy 6-month subscription to the SIRIUS service is included.

¹See your Lincoln Mercury Dealer or contact SIRIUS at 1-888-539-7474 for more information.



SYNC
Powered by **Microsoft**

Your Mercury. Your Life. Now in Sync.

Introducing the new standard for in-vehicle communications, Mercury SYNC™ developed in association with Microsoft®, is a voice-activated, customizable media system that fully integrates your vehicle with your Bluetooth®-enabled mobile phone and digital media player. Life doesn't stop when you enter your vehicle, so we engineered SYNC to keep you connected. With Microsoft Auto software actually embedded in your Mercury vehicle, SYNC allows you to operate most Bluetooth-enabled mobile phones and most portable digital media players using simple voice commands. Play a song? Make a call? Just say the word – in English, French or Spanish – and SYNC responds. *Jalopnik.com* says SYNC is "the most robust system we've yet seen for connecting your personal audio and communication devices to your car for in-auto infotainment. The system's just that good."

Sync Is

VOICE-ACTIVATED, HANDS-FREE CALLING

UNINTERRUPTED CONNECTIONS

RING-TONE SUPPORT

INSTANT VOICE RECOGNITION

AUTOMATIC PHONE BOOK TRANSFER

MULTILINGUAL INTELLIGENCE

SUPPORT FOR UP TO 12 PHONES

ADVANCED CALLING FEATURES

VOICE-ACTIVATED DIGITAL MEDIA PLAYER

SUPPORT FOR POPULAR PLAYERS AND FORMATS

ACCESS BY ARTIST, TRACK, GENRE, ALBUM, PLAYLIST

USB DEVICE CHARGING

PLAY "SIMILAR MUSIC" FEATURE

PODCAST AND AUDIO BOOK SUPPORT

BLUETOOTH® STREAMING AUDIO

MERCURY SYNC™ IS AVAILABLE ON MILAN, MOUNTAINEER AND SABLE.

GO TO SYNCMYRIDE.COM FOR MORE DETAILS.



MERCURY | NEW DOORS OPENED

mercuryvehicles.com



"Play Genre:
(rock)."

"Play Artist:
(name)."

"Play Track:
(name)."

SYNC YOUR MERCURY WITH YOUR DIGITAL MEDIA PLAYER.

Step 1: Connect your portable digital media player¹ to the system's USB port. **Step 2:** Press the "Push To Talk" (PTT) button on the steering wheel and simply say "PLAY TRACK (your favorite song)." **Step 3:** Crank up the volume on the audio system and enjoy for miles. With SYNC, your digital music collection now has wheels. Using voice commands, or through controls on the steering wheel and audio system, you call the shots. In the mood for more guitar riffs? Just tell SYNC, "Similar Music," and it will play tracks based on the genre and style of your current selection.

SYNC is compatible with nearly all digital media players, including iPod® and Microsoft Zune™, as well as flash drives. And because your media player is plugged into the system's USB port while your vehicle is running, SYNC charges the device. So just start talking. SYNC will do the rest.

iPod® is a registered trademark of Apple Inc. All rights reserved.

"Dial
1-248-123-4567."

"Call Vanessa:
Work."

"Call Amy:
Home."



SYNC YOUR MERCURY WITH YOUR MOBILE PHONE.

As long as you have a compatible Bluetooth®-enabled mobile phone,¹ SYNC is ready to chat. Simply press the "Push To Talk" (PTT #5) button, say the name of the person you want to talk to, and SYNC will automatically place the call. You can also speak the number you are calling and assign Quick-Dial numbers to button presets on the audio system. To answer incoming calls, press the "Phone" button. It doesn't get much easier than that. And if you're in the middle of a conversation while entering the vehicle, SYNC will seamlessly transfer the call to the vehicle hands-free system so you won't miss a word.

¹Some digital media players and some mobile phones may not be fully compatible.

Research In Motion, the RIM logo, BlackBerry, the BlackBerry logo and Sure Type are registered with the U.S. Patent and Trademark Office and may be pending or registered in other countries - these and other marks of Research In Motion Limited are used under license.



Hardwired for Entertainment.

GET DIRECTIONS WITHOUT STOPPING.

You've stopped to ask for directions for the last time! Mountaineer Premier's available voice-activated, DVD-based Navigation System (shown at left) actually calls out upcoming street names rather than just telling you in which direction to turn. It only takes seconds to complete complex routes. The control buttons around the system's colorful 6.5" LCD touch screen make information easy to access. You'll enjoy using the handy points-of-interest screen to help you quickly locate the nearest ATM, restaurant or lodging on your next trip. Available on Premier as part of the Navigation/Moon & Tune Package.

GIVE "ROAD TRIP" A WHOLE NEW MEANING.

Kids not that excited about climbing in the vehicle for the 10-hour road trip to the beach? With Mountaineer Premier's available Rear-Seat DVD Entertainment System, they'll be entertained for hours. Includes an 8" LCD screen, 2 sets of wireless headphones and a remote control.

READY FOR BROADCAST.

With a standard audio input jack inside the front center floor console, your digital music library now has wheels. Just connect your personal music player to the jack and you can broadcast all of your favorite tunes, audiobooks or podcasts through the sound system and speakers.

SATELLITE READY.

Music matters. And with over 130 channels, available SIRIUS Satellite Radio delivers commercial-free music, along with news, sports and entertainment. Available on all Mountaineer models as part of the Moon & Tune Elite Package, SIRIUS Satellite Radio includes a complimentary 6-month subscription to the SIRIUS service when ordered.

Strength in Numbers

AVAILABLE 292-HP V-8 POWERS MOUNTAINEER PREMIER.

In the 2008 Mercury Mountaineer, the numbers really add up in your favor. The 4.6L 3-valve V-8 engine, available on Mountaineer Premier, tops the numbers list with 292 hp and 300 lb.-ft. of torque. High-flow ports and dual-equal variable cam timing help this robust V-8 deliver its impressive performance. Also providing assistance is the first-in-class, available 6-speed automatic transmission, whose evenly spaced gear ratios make the most of the V-8's powerband.

On Mountaineer and Mountaineer Premier, a standard 4.0L V-6 engine is teamed with a wide-ratio 5-speed automatic transmission. With 210 hp and 254 lb.-ft. of torque, this clean-burning engine even meets strict Ultra Low Emissions Vehicle II (ULEV II) standards.

Mountaineer's Independent Rear Suspension features a compact, trailing-arm setup. It works with the front suspension and stiff frame to deliver a refined ride and excellent handling. You'll feel connected to the road – not beat up by it. Heightening that connectivity is Mountaineer's available full-time All-Wheel-Drive (AWD) system. This intuitive system smartly adapts to changing road and weather conditions as they occur, instantly transferring power to the axle with the best grip to help Mountaineer really hold the road.





PUT A SHINE TO IT.

The available new Chrome Package allows you to clad your 2008 Mountaineer Premier in a liberal dose of chrome. Start up front with Premier's signature Mercury grille, now resplendent in chrome. Check out the reflective 18" bright chrome-clad wheels, the chrome sideview mirror caps and chrome roof-rack side rails. In the rear, chrome covers the taillamp surrounds, bumper insert plate and license plate appliqué. Chrome Mountaineer nameplates in the rear and on the side complete the package. Available only in Vivid Red Metallic, Vapor Silver Metallic and Black, a Mountaineer Premier with the Chrome Package will shine brightly.

MOUNTAINEER PREMIER IN BLACK WITH AVAILABLE EQUIPMENT, INCLUDING CHROME PACKAGE.



There's Safety in Stability.

ROLL STABILITY CONTROL HELPS YOU KEEP YOUR GRIP.

Standard on every 2008 Mountaineer, AdvanceTrac® with RSC® (Roll Stability Control™) is an electronic stability enhancement system that actually measures what other manufacturers' systems ignore or can only estimate. AdvanceTrac with RSC features a unique vehicle-roll motion sensor that directly measures the vehicle's roll rate 100 times every second. The system uses this rate to determine when and how it will engage the Anti-lock Brake System (ABS), traction control and yaw control to apply individual brakes and modify engine power, ultimately helping you keep all 4 wheels firmly planted. This remarkable system is not available on any of Mountaineer's competitors.

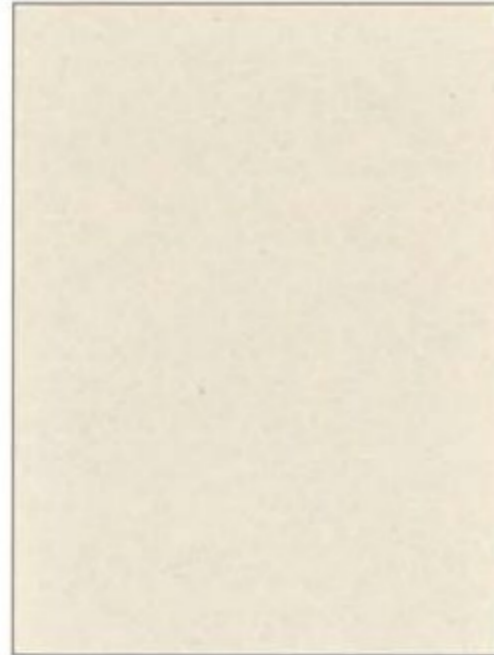
In the event of a frontal collision, Mountaineer's Intelligent Safety System™ deploys front airbags that use adaptive venting technology to help tailor airbag power to occupant size and needs. Front-seat side airbags help provide an extra measure of chest protection for the driver and front passenger in certain side-impact events. And our standard Safety Canopy™ System features large, side-curtain airbags that enhance protection for outboard-seated occupants in the 1st and 2nd rows. Roll-fold technology helps them deploy – even if someone is leaning against the window. All 6 airbags are standard, and always at the ready should you need them.

Remember that even advanced technology cannot overcome the laws of physics. It's always possible to lose control of a vehicle due to inappropriate driver input for the conditions.



MOUNTAINEER PREMIER IN BLACK. SHOWN WITH AVAIL ABLE EQUIPMENT.

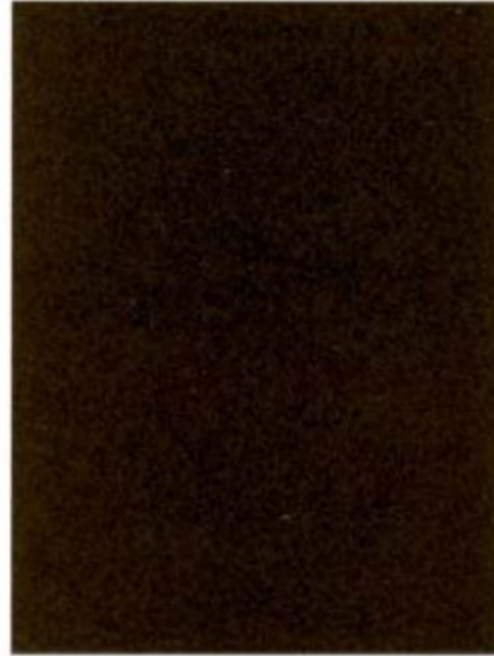
WHITE SUEDE¹



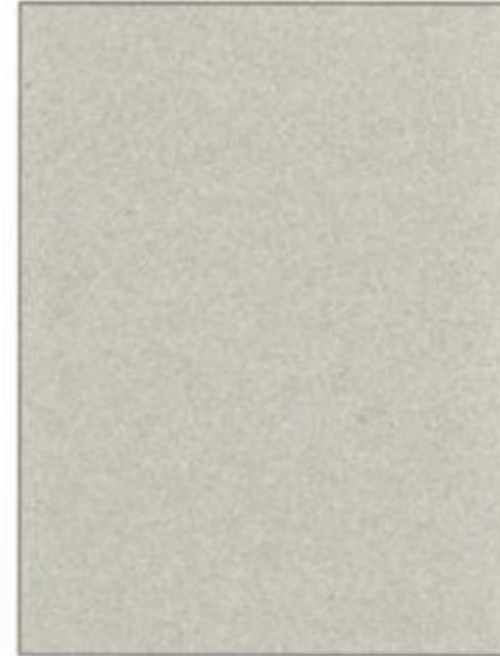
VAPOR SILVER^{1,2}



STONE GREEN¹



SILVER BIRCH



VIVID RED²



BLACK²



DARK CHERRY



WHITE CHOCOLATE TRI-COAT¹



Mercury uses clearcoat paint for beauty and protection. All exterior paints are Metallic except for White Suede and Black. Colors are representative only. *New for 2008. Available on Chrome Package. Available on Premier only.

CAMEL LEATHER SAND ALCANTARA® INSERTS



CHARCOAL BLACK LEATHER SAND ALCANTARA INSERTS



CAMEL LEATHER WITH PERFORATED INSERTS



CHARCOAL BLACK LEATHER WITH PERFORATED INSERTS



CAMEL CLOTH SAND CLOTH INSERTS



CHARCOAL BLACK CLOTH MEDIUM LIGHT STONE CLOTH INSERTS



■ MOUNTAINEER ■ MOUNTAINEER PREMIER □ AVAILABLE

■ STANDARD □ AVAILABLE

SECURITY/SAFETY (continued)

Lower anchors and tether anchors for child-safety seats (LATCH) for all 2nd-row seating positions, and tether anchor for 3rd-row center position
 Safety belts – 3-point safety belts for all seating positions
 Safety Canopy™ System with side-curtain airbags for 1st- and 2nd-row-outboard passengers, with rollover sensor
 SecuriLock® passive anti-theft ignition system
 Tire Pressure Monitoring System

AVAILABLE FEATURES

4.6L 3-valve SOHC V-8 engine with 6-speed automatic transmission
 Color-keyed running boards
 Full-time All-Wheel-Drive (AWD) system
 Leather-trimmed front bucket seats with perforated leather inserts and 10-way power driver seat, including power lumbar and recline
 Leather-trimmed, heated front bucket seats with perforated leather inserts and 10-way power driver seat, including power lumbar, recline, memory and easy entry/exit, and 6-way power passenger seat with manual lumbar
 Power-adjustable pedals
 Quad bucket seating² with recline-and-fold feature, plus 2nd-row center floor console with 2 cupholders
 Rear-Seat DVD Entertainment System – Overhead DVD player with 8" pull-down screen, 2 sets of wireless headphones and remote control
 Reverse Sensing System
 Roof-rail crossbars

AVAILABLE PACKAGES

3rd-row Seat Package – Includes 3rd-row 50/50 split bench seat and Auxiliary Climate Control with controls for driver and rear seat occupants
3rd-row Seat Elite Package – Includes 3rd-row PowerFold™ 50/50 split bench seat and Auxiliary Climate Control with controls for driver and rear seat occupants
Amenities Package – Includes power-deployable running boards, Universal Garage Door Opener and Reverse Sensing System
Chrome Package – Includes 18" bright chrome-clad wheels and chrome grille, roof rails, mirror caps, taillamp surrounds, badging, beltline, bumper insert plate surround and license plate appliqué
Comfort Package – Includes leather-trimmed, heated front bucket seats with 10-way power driver seat, including power lumbar, recline, memory and easy entry/exit; 6-way power passenger seat with manual lumbar; and Dual-zone Electronic Automatic Temperature Control
Heated Package – Includes heated front bucket seats with perforated inserts and 10-way power driver seat, including power lumbar, recline, memory and easy entry/exit; 6-way power passenger seat with manual lumbar; and heated windshield
Moon & Tune Elite Package⁶ – Includes power moonroof; Audiophile® Sound System with AM/FM stereo, 6-disc in-dash CD changer with MP3 capability, 7 premium speakers including an 8" subwoofer, 290-watts peak output and 6-month SIRIUS Satellite Radio⁷ subscription
Navigation/Moon & Tune Package – Includes voice-activated, DVD-based Navigation System; power moonroof; Audiophile Sound System with AM/FM stereo, 6-disc in-dash CD changer with MP3 capability, 7 premium speakers including an 8" subwoofer, 290-watts peak output and 6-month SIRIUS Satellite Radio subscription
Trailer Tow Upgrade Package – Class III/IV trailer hitch receiver with 4-/7-pin electrical connectors

MOUNTAINEER PREMIER

MOUNTAINEER

Lower anchors and tether anchors for child-safety seats (LATCH) for all 2nd-row seating positions, and tether anchor for 3rd-row center position	■	■
Safety belts – 3-point safety belts for all seating positions	■	■
Safety Canopy™ System with side-curtain airbags for 1st- and 2nd-row-outboard passengers, with rollover sensor	■	■
SecuriLock® passive anti-theft ignition system	■	■
Tire Pressure Monitoring System	■	■
4.6L 3-valve SOHC V-8 engine with 6-speed automatic transmission	□	□
Color-keyed running boards	□	□
Full-time All-Wheel-Drive (AWD) system	□	□
Leather-trimmed front bucket seats with perforated leather inserts and 10-way power driver seat, including power lumbar and recline	□	□
Leather-trimmed, heated front bucket seats with perforated leather inserts and 10-way power driver seat, including power lumbar, recline, memory and easy entry/exit, and 6-way power passenger seat with manual lumbar	□	□
Power-adjustable pedals	□	□
Quad bucket seating ² with recline-and-fold feature, plus 2nd-row center floor console with 2 cupholders	□	□
Rear-Seat DVD Entertainment System – Overhead DVD player with 8" pull-down screen, 2 sets of wireless headphones and remote control	□	□
Reverse Sensing System	□	□
Roof-rail crossbars	□	□
3rd-row Seat Package – Includes 3rd-row 50/50 split bench seat and Auxiliary Climate Control with controls for driver and rear seat occupants	□	□
3rd-row Seat Elite Package – Includes 3rd-row PowerFold™ 50/50 split bench seat and Auxiliary Climate Control with controls for driver and rear seat occupants	□	□
Amenities Package – Includes power-deployable running boards, Universal Garage Door Opener and Reverse Sensing System	□	□
Chrome Package – Includes 18" bright chrome-clad wheels and chrome grille, roof rails, mirror caps, taillamp surrounds, badging, beltline, bumper insert plate surround and license plate appliqué	□	□
Comfort Package – Includes leather-trimmed, heated front bucket seats with 10-way power driver seat, including power lumbar, recline, memory and easy entry/exit; 6-way power passenger seat with manual lumbar; and Dual-zone Electronic Automatic Temperature Control	□	□
Heated Package – Includes heated front bucket seats with perforated inserts and 10-way power driver seat, including power lumbar, recline, memory and easy entry/exit; 6-way power passenger seat with manual lumbar; and heated windshield	□	□
Moon & Tune Elite Package ⁶ – Includes power moonroof; Audiophile® Sound System with AM/FM stereo, 6-disc in-dash CD changer with MP3 capability, 7 premium speakers including an 8" subwoofer, 290-watts peak output and 6-month SIRIUS Satellite Radio ⁷ subscription	□	□
Navigation/Moon & Tune Package – Includes voice-activated, DVD-based Navigation System; power moonroof; Audiophile Sound System with AM/FM stereo, 6-disc in-dash CD changer with MP3 capability, 7 premium speakers including an 8" subwoofer, 290-watts peak output and 6-month SIRIUS Satellite Radio subscription	□	□
Trailer Tow Upgrade Package – Class III/IV trailer hitch receiver with 4-/7-pin electrical connectors	□	□



17" MACHINED-ALUMINUM
STANDARD ON MOUNTAINEER



18" SATIN-ALUMINUM CHROME-CLAD
STANDARD ON PREMIER



18" BRIGHT CHROME-CLAD
AVAILABLE ON PREMIER WITH CHROME PACKAGE

DIMENSIONS (1st/2nd/3rd row)

Wheelbase 113.7"
 Length 193.5"
 Width (excluding mirrors) 73.5"
 Height (with options) 72.8"
 Minimum running ground clearance 8.7"
 Head room 39.8"/38.7"/37.4"
 Leg room 42.4"/36.9"/34.9"
 Shoulder room 59.0"/58.9"/53.1"
 Hip room 55.4"/55.5"/45.3"

WEIGHTS AND CAPACITIES

Cargo volume, 5-passenger (behind 1st/2nd row) 85.8/45.1 cu. ft.
 Cargo volume, 7-passenger (behind 1st/2nd/3rd row) 83.7/43.9/13.6 cu. ft.
 Axle ratio 3.55:1 standard; 3.73:1 optional (required and only available on 4.0L V-6 with Trailer Tow Upgrade Package)

4.0L SOHC V-6

Horsepower 210 @ 5100 rpm
 Torque 254 lb.-ft. @ 3700 rpm
 Compression ratio 9.7:1

4.6L SOHC V-8

Horsepower 292 @ 5750 rpm
 Torque 300 lb.-ft. @ 3950 rpm
 Compression ratio 9.7:1

V-6 TOWING lbs.

4x2 standard 3500
 AWD standard 3500
 4x2 optional 5295
 AWD optional 5000

V-8 TOWING lbs.

4x2 standard 3500
 AWD standard 3500
 4x2 optional 7220
 AWD optional 7055

⁴Always wear your safety belt and secure children in the rear seat.
⁵Requires 3rd-row Seat Package or 3rd-row Seat Elite Package. Not available with cloth seats or Alcantara inserts.
⁶Includes medium overhead console when optioned with Auxiliary Climate Controls.
⁷Service not available in Alaska or Hawaii. See your Lincoln Mercury Dealer or contact SIRIUS at 1-888-539-7474 for more information.
 ©2007 SIRIUS Satellite Radio Inc. "SIRIUS," the SIRIUS dog logo and "The Best Radio on Radio" are registered trademarks of SIRIUS Satellite Radio Inc.

Alcantara is a registered trademark of Alcantara Spa, Italy.

Audiophile is a registered trademark of Audiophile, Inc.

STANDARD FEATURES

POWERTRAIN/FUNCTIONALITY

4.0L 2-valve SOHC V-6 engine with 5-speed automatic transmission
 4-wheel power disc brakes with Anti-lock Brake System (ABS)
 Class II trailer hitch receiver with 4-pin electrical connector and 3500-lb. towing capacity
 Front and rear independent suspensions
 Rear-wheel drive (4x2)

EXTERIOR

17" machined-aluminum wheels with P245/65R17 all-terrain BSW tires
 18" satin-aluminum chrome-clad wheels with P235/65R18 all-season BSW tires
 Black roof rails
 Color-keyed running boards
 Fog lamps
 Intermittent rear wiper with washer
 Keyless-entry keypad
 Power, heated sideview mirrors with security approach lamps and color-keyed mirror caps
 Privacy glass for rear doors, rear quarter windows and liftgate window
 Satin-aluminum roof rails and exhaust tip
 Solar-tinted windshield and front door glass
 Speed-sensitive, intermittent windshield wipers

INTERIOR

1st-row cloth bucket seats with 6-way power driver seat, including manual lumbar and recline
 1st-row leather-trimmed bucket seats with Alcantara® inserts, 10-way power driver seat including power lumbar, and manual passenger seat
 2nd-row fold-flat 60/40 split bench seat with 2-way adjustable head restraints and integrated seat restraints for middle passenger
 3rd-row vinyl-trimmed 50/50 split bench seat
 4-line message center with compass, distance-to-empty, outside temperature and other information
 Auto-dimming rearview mirror
 Color-keyed, leather-wrapped steering wheel with secondary audio and cruise controls
 Dual-zone Electronic Automatic Temperature Control
 Front center floor console with storage bin, power point and audio input jack; 2 front and 2 rear cupholders; front and rear power points; low heat vents and high air conditioning register
 Illuminated visor vanity mirrors
 Overhead console includes 2 map lights with dome function, sunglasses holder and garage door opener holder (except when Auxiliary Climate Control or moonroof is ordered)
 Power door locks and windows with one-touch-up/-down driver-side feature
 Premium AM/FM stereo/single-CD player and audio input jack (located in front center floor console)
 Remote keyless-entry system with 2 key fobs, panic alarm button and illuminated-entry system
 Tilt steering column

SECURITY/SAFETY

Intelligent Safety System™ with adaptive steering column; driver and front-passenger adaptive load-limiting retractors; driver and front-passenger front airbags⁴ with adaptive venting and front-passenger adaptive tether; driver and front-passenger front-seat side airbags⁴ and Front-Passenger Sensing System
 AdvanceTrac® with RSC® (Roll Stability Control™)

MOUNTAINEER PREMIER

MOUNTAINEER

Lower anchors and tether anchors for child-safety seats (LATCH) for all 2nd-row seating positions, and tether anchor for 3rd-row center position	■	■
Safety belts – 3-point safety belts for all seating positions	■	■
Safety Canopy™ System with side-curtain airbags for 1st- and 2nd-row-outboard passengers, with rollover sensor	■	■
SecuriLock® passive anti-theft ignition system	■	■
Tire Pressure Monitoring System	■	■
4.6L 3-valve SOHC V-8 engine with 6-speed automatic transmission	□	□
Color-keyed running boards	□	□
Full-time All-Wheel-Drive (AWD) system	□	□
Leather-trimmed front bucket seats with perforated leather inserts and 10-way power driver seat, including power lumbar and recline	□	□
Leather-trimmed, heated front bucket seats with perforated leather inserts and 10-way power driver seat, including power lumbar, recline, memory and easy entry/exit, and 6-way power passenger seat with manual lumbar	□	□
Power-adjustable pedals	□	□
Quad bucket seating ² with recline-and-fold feature, plus 2nd-row center floor console with 2 cupholders	□	□
Rear-Seat DVD Entertainment System – Overhead DVD player with 8" pull-down screen, 2 sets of wireless headphones and remote control	□	□
Reverse Sensing System	□	□
Roof-rail crossbars	□	□
3rd-row Seat Package – Includes 3rd-row 50/50 split bench seat and Auxiliary Climate Control with controls for driver and rear seat occupants	□	□
3rd-row Seat Elite Package – Includes 3rd-row PowerFold™ 50/50 split bench seat and Auxiliary Climate Control with controls for driver and rear seat occupants	□	□
Amenities Package – Includes power-deployable running boards, Universal Garage Door Opener and Reverse Sensing System	□	□
Chrome Package – Includes 18" bright chrome-clad wheels and chrome grille, roof rails, mirror caps, taillamp surrounds, badging, beltline, bumper insert plate surround and license plate appliqué	□	□
Comfort Package – Includes leather-trimmed, heated front bucket seats with 10-way power driver seat, including power lumbar, recline, memory and easy entry/exit; 6-way power passenger seat with manual lumbar; and Dual-zone Electronic Automatic Temperature Control	□	□
Heated Package – Includes heated front bucket seats with perforated inserts and 10-way power driver seat, including power lumbar, recline, memory and easy entry/exit; 6-way power passenger seat with manual lumbar; and heated windshield	□	□
Moon & Tune Elite Package ⁶ – Includes power moonroof; Audiophile® Sound System with AM/FM stereo, 6-disc in-dash CD changer with MP3 capability, 7 premium speakers including an 8" subwoofer, 290-watts peak output and 6-month SIRIUS Satellite Radio ⁷ subscription	□	□
Navigation/Moon & Tune Package – Includes voice-activated, DVD-based Navigation System; power moonroof; Audiophile Sound System with AM/FM stereo, 6-disc in-dash CD changer with MP3 capability, 7 premium speakers including an 8" subwoofer, 290-watts peak output and 6-month SIRIUS Satellite Radio subscription	□	□
Trailer Tow Upgrade Package – Class III/IV trailer hitch receiver with 4-/7-pin electrical connectors	□	□



Get the ride you want. Whether you plan to lease or finance, you'll find the choices that are right for you at Ford Credit. Ask your Lincoln Mercury Dealer for details or check us out at www.fordcredit.com.

Ford Motor Company Insurance Services Get Ford Motor Company quality in your auto insurance. Our program offers industry-leading benefits and competitive rates. Call 1.877.367.3847, or visit us at www.fordvip.com for a no-obligation quote. Insurance offered by American Road Services Company (in CA, American Road Insurance Agency), a licensed agency and subsidiary of Ford Motor Company.

Ford Extended Service Plan For a purchase or lease, the Ford Extended Service Plan (ESP) gives you "Peace-of-Mind" protection designed to cover key vehicle components and protect you from the cost of unexpected repairs. Ask your dealer for an ESP, the only service contract backed exclusively by Ford and honored at all Ford Lincoln Mercury dealerships.

Peace of mind comes from a 3-year/36,000-mile bumper-to-bumper **New Vehicle Limited Warranty** that covers repair, replacement or adjustment of parts at no additional cost, as well as a 5-year/60,000-mile powertrain limited warranty which features no deductible and is fully transferable. Roadside Assistance for 5 years or 60,000 miles provides the security of knowing that help may be only a phone call away should you run out of fuel, lock yourself out of the vehicle or need towing. Your Lincoln Mercury Dealer will provide complete details.

Comparisons based on 2007 competitive models (Truck-based midsize SUV class), publicly available information and Ford certification data at time of printing. Some features discussed may be optional. Vehicles shown may contain optional equipment. Features shown may be offered only in combination with other options or subject to additional ordering requirements or limitations. Dimensions shown may vary due to optional features and/or production variability. Following publication of the catalog, certain changes in standard equipment, options and the like, or product delays may have occurred which would not be included in these pages. Your Lincoln Mercury Dealer is the best source for up-to-date information. Lincoln Mercury reserves the right to change product specifications at any time without incurring obligations.



MERCURY | NEW DOORS OPENED

mercuryvehicles.com