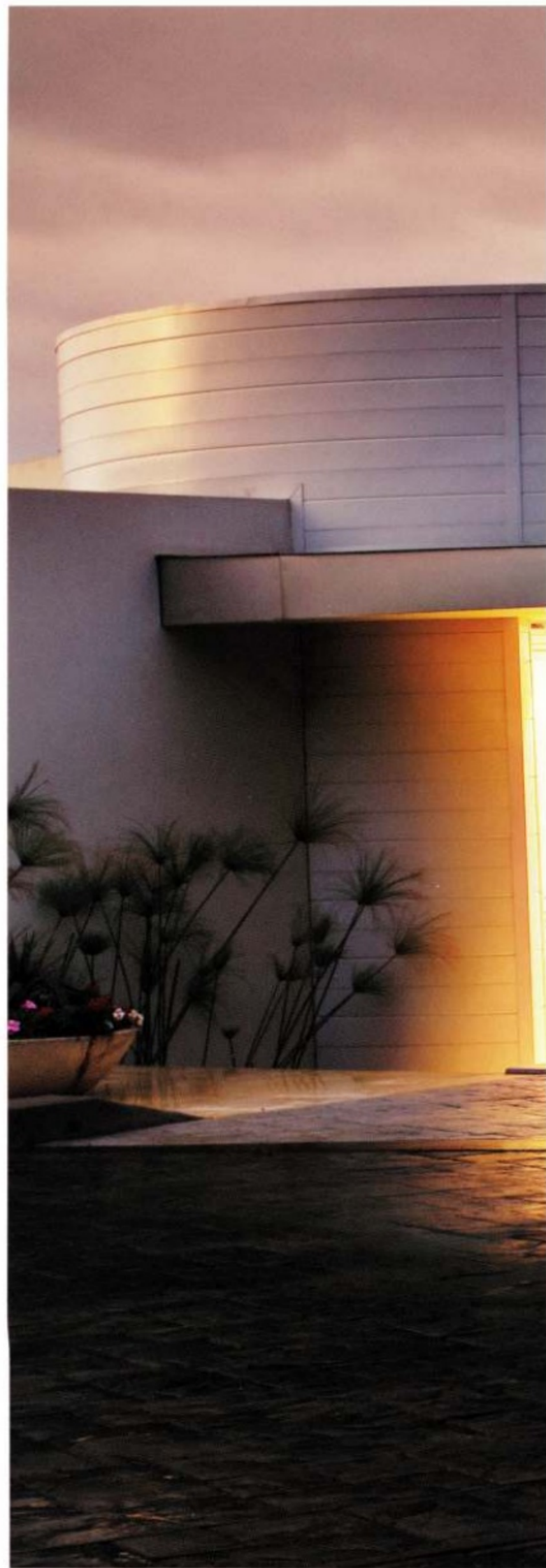


'09 Mercury **SABLE**



**MERCURY** | NEW DOORS OPENED





Artfully Designed. From Any Angle.

SABLE PREMIER IN TUXEDO BLACK METALLIC WITH AVAILABLE EQUIPMENT.



## Style. Substance. Smarts.

You'll find them all in the 2009 Mercury Sable. Artfully designed projector-beam headlamps, a distinctive satin finish on the grille, sideview mirrors and door handles, dual chrome exhaust tips and available 18" chrome-clad wheels (shown) help define its compelling style. Not to mention an available new Sable VOGA Package that brings fashion front and center.

Substantive performance comes courtesy of a 3.5L Duratec V-6 engine that delivers a lively 263 horsepower, and available Intelligent All-Wheel Drive (AWD) that helps improve driving performance on any road.

And what could be smarter than the available Mercury SYNC® voice-activated, in-vehicle communications and entertainment system that allows you to voice-activate Bluetooth®-enabled phones and most digital media players. Or the capability of the largest trunk in its class.<sup>1</sup>

Discover all this and more in the 2009 Sable. From Mercury,

<sup>1</sup>Standard 5-passenger Large Car class.



SABLE PREMIER IN TUXEDO BLACK METALLIC WITH AVAILABLE EQUIPMENT.





## Introducing Mercury Sable VOGA.

Wherever it travels, the 2009 Mercury Sable equipped with the VOGA Package will be on display. Make sure you dress appropriately.

With plenty of chrome to accent its Tuxedo Black Metallic or White Suede exterior hue, Sable VOGA simply shines. Chrome sparkles on the grille, rear decklid appliqué, unique "VOGA" badging and 18" 7-spoke chrome-clad aluminum wheels with exclusive "VOGA" center caps.

Inside, a high-contrast interior features soft and subtle Cashmere-colored leather-trimmed seats – exclusive to VOGA – against a Charcoal Black setting. Tone-on-tone Cashmere-colored stitching and an embroidered "VOGA" logo on the front seatbacks and floor mats add

further refinement. Cashmere-colored door-trim inserts and unique Cyber Carbon interior appliqués add the finishing touches.

All this finery is in addition to Sable Premier standard features like Mercury SYNC,<sup>®</sup> SIRIUS<sup>®</sup> Satellite Radio, leather-trimmed heated front seats with 8-way power adjustments for the driver, and Dual-zone Electronic Automatic Temperature Control.

For a uniquely premium and very fashionable appearance, look no further than the 2009 Mercury Sable VOGA.





## Style and Comfort Reign.

Inside the 2009 Mercury Sable, chrome-ringed gauges reflect a modern design theme. Satin-finish cuffs grace the leather-wrapped steering wheel with convenient cruise and secondary audio controls, while available San Macassar woodgrain accents enliven the instrument panel, center stack and center console. On Sable Premier, the available Premier Wood Package (shown) adds the same accents to the shift knob and steering wheel as well. Standard power leather-trimmed seats on Sable Premier feature elegant contrast stitching and 2 heat settings to enhance your comfort whenever the temperature dips.

SABLE PREMIER WITH AVAILABLE EQUIPMENT.



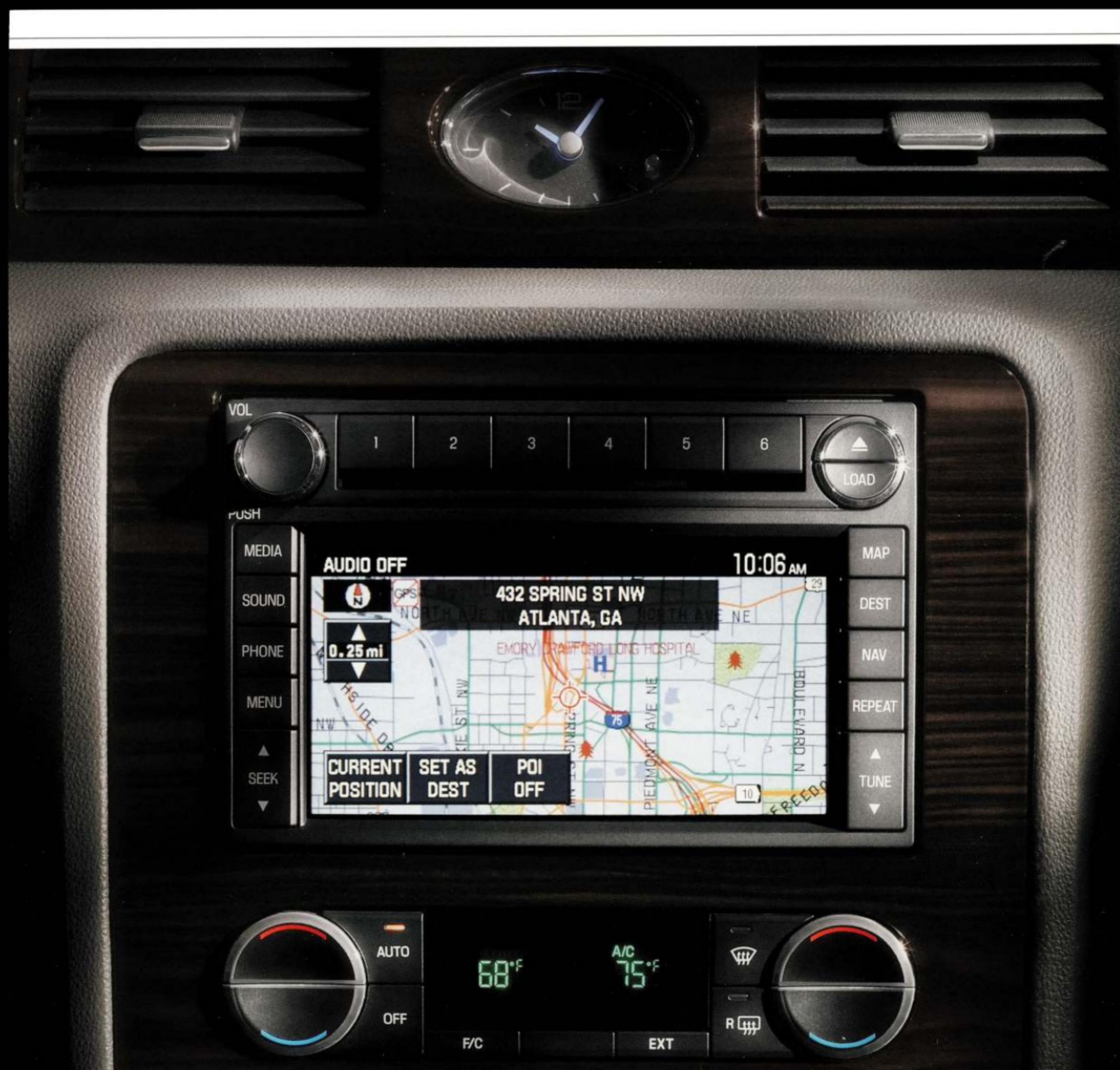


## A Space for Everything.

Mercury Sable features the most spacious interior in its class. Up front, SUV-like Command Seating™ gives you easy entry and exit, a more upright seating position and an excellent view of the road ahead. A handy center floor console features a two-tiered storage system. Open the cover to access the upper tier, with just enough storage for a digital camera or cell phone. Open both the lid and the storage bin to expose a second level that goes nearly to the floor of the vehicle. This hidden storage area offers out-of-sight security for more valuable items, like a purse or digital camcorder.

If that's not functional enough, the center console also houses the standard auxiliary audio input jack for plug-and-play capability with your digital music player, as well as an additional power point to keep electronic items recharged. Those seated comfortably in the rear have their own advantages. Rear-seat head room is best in class. In Sable Premier, a rear-seat center armrest features 2 cupholders and a small storage compartment. And with the largest trunk in its class, Sable can hold everything you need to bring along for the ride.





There's no need to ask for directions when they're available by simply issuing a voice command. Combining Global Positioning System (GPS) technology with DVD mapping, Sable's available voice-activated Navigation System provides turn-by-turn voice guidance in English, French or Spanish; allows you to save destinations; gives you the shortest route; and will even reroute you if you miss a turn.



**You Talk. SYNC Listens.<sup>™</sup>      Directions. Your Way.      Your Music. No Interruptions.**

More importantly, Mercury SYNC<sup>®</sup> responds. Developed in concert with Microsoft<sup>®</sup>, this available in-vehicle communications and entertainment system allows you to voice-activate Bluetooth<sup>®</sup>-enabled mobile phones, most MP3 players, thumb drives and more! Tell it to call Amy. Ask it to play a specific tune. No problem. How convenient is that?

"SYNC is a masterpiece in user-friendliness," says *Cars.com*. "It's a win-win feature that's so affordable and easy to use it's a good bargain even if you're not a technophile." Get synced up now.

Visit [SyncMyRide.com](http://SyncMyRide.com) for the latest information about exciting new features.



With Sable's optional voice-activated Navigation System (map screen shown at left; audio screen shown above), stopping to ask for directions is a distant memory. Neatly integrated into the Audiophile<sup>®</sup> AM/FM Sound System, standard on Sable Premier, maps and menus are clearly displayed on a large, 6.5" color touch screen, so locating the nearest ATM, home improvement store or restaurant is easy. Control the navigation functions with the buttons to the right of the screen; audio functions with the buttons to the left.

With 8 strategically placed speakers (including an 8" subwoofer), the Audiophile AM/FM Sound System features 320 watts of power and a 6-disc in-dash CD changer for hours of your favorite music.

Music matters. And with over 130 channels of crystal clear, digital-quality sound, SIRIUS Satellite Radio<sup>®</sup> is your passport to an amazing range of music (all of it 100% commercial free), as well as news, sports, talk and entertainment. With seamless coast-to-coast coverage in the contiguous United States, SIRIUS lets you hear just what you want to hear – without all the interruptions.

Standard on Mercury Sable Premier, SIRIUS Satellite Radio includes a complimentary 6-month subscription to the SIRIUS service when ordered.



\*Driving while distracted can result in loss of vehicle control. Only use mobile phones and other devices, even with voice commands, when it is safe to do so. Microsoft is a registered trademark of Microsoft Corporation. The Bluetooth word mark is a registered trademark owned by the Bluetooth SIG, Inc. <sup>2</sup>Service not available in Alaska or Hawaii. See your Lincoln Mercury Dealer or contact SIRIUS at 1-888-539-7474 for more information.





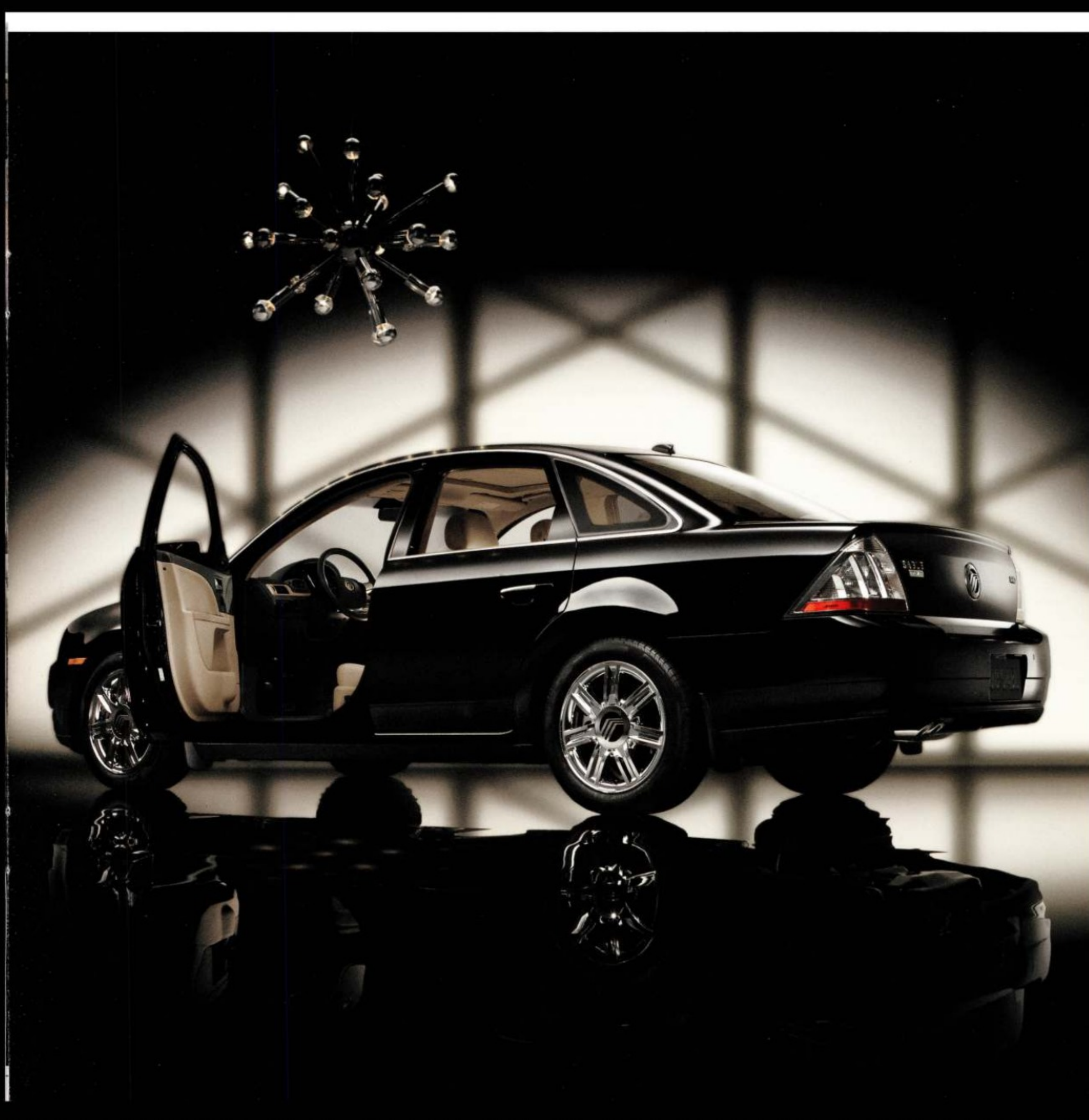
## Comfortable and Organized.

For front-seat passengers in Sable Premier, standard leather-trimmed heated seats provide 2 levels of warming luxury. For the driver, available power-adjustable brake and accelerator pedals with memory feature (available without memory on Sable) can be set to their optimum positions and recalled for 2 different drivers.

The deep grooves and raised ridges of Sable's available all-weather vinyl floor mats<sup>1</sup> hold snow, slush and mud while protecting the vehicle carpeting. A nibbed backing helps keep the mats in place.

In the trunk, an available interior cargo organizer<sup>1</sup> features a flip-open cover and divider nets to keep items separated. Made of premium-grade polyethylene, it installs easily and helps protect the trunk interior from spills.

To transport longer items, like skis or home furnishings, just fold the 60/40 split-folding rear seat and front-passenger seat down and you can carry items up to 9' long inside the vehicle.



<sup>1</sup>Available through your Mercury Dealer as a Genuine Mercury Accessory.



## Driving Confidence.

A heavy rain can make it slick. Thick snow makes it almost impassable. And intense heat can soften it up. On the blacktop that you travel, road conditions can limit the amount of traction your tires achieve. That's where Sable's Intelligent All-Wheel Drive<sup>1</sup> (AWD) automatically steps in. Constantly monitoring driver and vehicle inputs, Intelligent AWD uses an on-demand electronic center coupler to deliver the appropriate amount of torque to all 4 wheels – anticipating wheel slippage before it even occurs. Under heavy acceleration, for instance, Intelligent AWD proactively allocates torque to the rear wheels before the front wheels begin to slip.

In addition to transferring torque from the front axle to the rear, Intelligent AWD works together with standard AdvanceTrac<sup>®</sup> electronic stability control to transfer it side to side on each axle. So even if only one wheel has traction, the system can transfer torque to that wheel to help keep Sable moving. Whether rain, snow or bright sunshine awaits you, Intelligent AWD has you covered.

<sup>1</sup>Available feature.



SABLE PREMIER IN BRILLIANT SILVER METALLIC WITH AVAILABLE EQUIPMENT.





## Power to Please.

The 2009 Mercury Sable has more than enough power to throw your commute into high gear. The advanced technology of Sable's powerful 3.5L Duratec V-6 engine includes a lightweight die-cast aluminum block and intake variable cam timing (iVCT) to help ensure optimal horsepower per liter. The result? A stirring 263 hp and 249 lb.-ft. of torque, while still achieving outstanding highway mileage of 28 mpg on front-wheel drive (FWD) models and 24 mpg on All-Wheel Drive (AWD) models.\* And it attains that performance on regular unleaded – not premium – gasoline, saving you money every time you stop at the pump.

Excellent launch and acceleration result from Sable's 6-speed automatic transmission, which uses a wide-ratio gear span for maximum performance. You'll appreciate it on every open road, feel it on every freeway entrance ramp and look forward to it in every passing situation. V-6 acceleration never felt so good.

\*2009 EPA-estimated fuel economy.

SABLE PREMIER IN WHITE SUEDE WITH AVAILABLE EQUIPMENT.





In frontal crash test ratings, Mercury Sable earned 5 Stars – the highest possible score.

## Rated the Safest Full-Size Sedan in America.<sup>1</sup>

On top of earning the government's highest 5-Star crash test rating in 4 categories (including front and side impact), the innovative vehicle structure of Mercury Sable also makes it a "Top Safety Pick" of the Insurance Institute for Highway Safety (IIHS). Sable is the only vehicle in its class to achieve top crash test results and earn the highest ratings in all 3 IIHS categories.

Every 2009 Sable features a suite of 6 standard airbags. Sable's Personal Safety System<sup>®</sup> customizes the deployment of the dual-stage front airbags. Front-seat side airbags offer an extra margin of chest protection for the driver and front passenger, while the side-curtain airbags of the Safety Canopy<sup>®</sup> System provide head-protection coverage for occupants in both rows.

Additional peace of mind comes from the new SOS Post-Crash Alert System,<sup>2</sup> designed to make Sable easier to see and hear after an accident in which any airbag has deployed or a safety belt pretensioner has activated. If either of these occurs, an alert automatically sounds the horn and flashes the hazard lights, headlamps and taillamps so that you and your passengers may be more easily located.

The best defense, of course, is avoiding an accident altogether. Sable's AdvanceTrac<sup>®</sup> electronic stability control<sup>3</sup> can help with that. With sensors to measure oversteer and yaw, the system constantly monitors vehicle speed, throttle position and steering wheel angle. If it senses wheel slip or loss of traction, AdvanceTrac manages engine torque and applies braking power where needed to help keep Sable tracking correctly on its intended path.

<sup>1</sup>Based on both NHTSA 5-Star crash test ratings and IIHS "Top Safety Pick." Star ratings are part of the U.S. Department of Transportation's Safercar.gov program ([www.safercar.gov](http://www.safercar.gov)). <sup>2</sup>SOS hardware may become damaged or the battery may lose power in a crash, which could prevent operation. Not all crashes will activate an airbag or safety belt pretensioner. <sup>3</sup>Remember that even advanced technology cannot overcome the laws of physics. It's always possible to lose control of a vehicle, due to inappropriate driver input for the conditions.





In frontal crash test ratings, Mercury Sable earned 5 Stars – the highest possible score.

## Rated the Safest Full-Size Sedan in America.<sup>1</sup>

On top of earning the government's highest 5-Star crash test rating in 4 categories (including front and side impact), the innovative vehicle structure of Mercury Sable also makes it a "Top Safety Pick" of the Insurance Institute for Highway Safety (IIHS). Sable is the only vehicle in its class to achieve top crash test results and earn the highest ratings in all 3 IIHS categories.

Every 2009 Sable features a suite of 6 standard airbags. Sable's Personal Safety System<sup>®</sup> customizes the deployment of the dual-stage front airbags. Front-seat side airbags offer an extra margin of chest protection for the driver and front passenger, while the side-curtain airbags of the Safety Canopy<sup>®</sup> System provide head-protection coverage for occupants in both rows.

Additional peace of mind comes from the new SOS Post-Crash Alert System,<sup>2</sup> designed to make Sable easier to see and hear after an accident in which any airbag has deployed or a safety belt pretensioner has activated. If either of these occurs, an alert automatically sounds the horn and flashes the hazard lights, headlamps and taillamps so that you and your passengers may be more easily located.

The best defense, of course, is avoiding an accident altogether. Sable's AdvanceTrac<sup>®</sup> electronic stability control<sup>3</sup> can help with that. With sensors to measure oversteer and yaw, the system constantly monitors vehicle speed, throttle position and steering wheel angle. If it senses wheel slip or loss of traction, AdvanceTrac manages engine torque and applies braking power where needed to help keep Sable tracking correctly on its intended path.

<sup>1</sup>Based on both NHTSA 5-Star crash test ratings and IIHS "Top Safety Pick." Star ratings are part of the U.S. Department of Transportation's Safercar.gov program ([www.safercar.gov](http://www.safercar.gov)). <sup>2</sup>SOS hardware may become damaged or the battery may lose power in a crash, which could prevent operation. Not all crashes will activate an airbag or safety belt pretensioner. <sup>3</sup>Remember that even advanced technology cannot overcome the laws of physics. It's always possible to lose control of a vehicle, due to inappropriate driver input for the conditions.



SANGRIA RED<sup>1</sup>



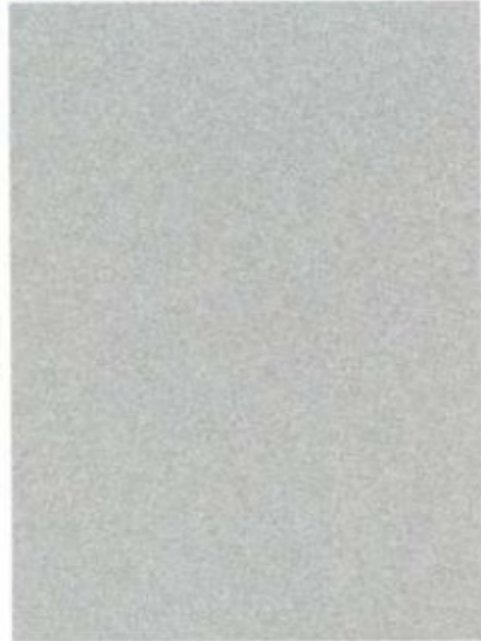
CINNAMON<sup>1</sup>



SMOKESTONE<sup>1</sup>



BRILLIANT SILVER<sup>1</sup>



WHITE SUEDE<sup>1,2</sup>



WHITE CHOCOLATE TRI-COAT<sup>1</sup>



DARK INK BLUE



LIGHT ICE BLUE



TUXEDO BLACK<sup>1,2</sup>

Mercury uses clearcoat paint for beauty and protection. All exterior paints are Metallic except for White Suede. Colors are representative only.  
<sup>1</sup>New for 2009. <sup>2</sup>Available with VOGA Package.



17" 7-SPOKE BRIGHT-ALUMINUM  
STANDARD ON SABLE



18" 7-SPOKE BRIGHT-ALUMINUM  
STANDARD ON PREMIER

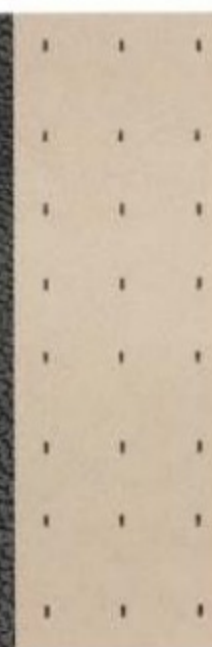
MEDIUM LIGHT STONE CLOTH



CAMEL CLOTH



MEDIUM DARK FLINT LEATHER/  
LIGHT STONE LEATHER INSERTS<sup>3</sup>



CHARCOAL BLACK LEATHER



LIGHT CAMEL LEATHER<sup>3</sup>



CASHMERE-COLORED LEATHER

SABLE

SABLE PREMIER

VOGA PACKAGE

<sup>3</sup>Available on Sable.



18" 7-SPOKE CHROME-CLAD ALUMINUM  
AVAILABLE ON PREMIER



18" 7-SPOKE CHROME-CLAD ALUMINUM  
AVAILABLE WITH VOGA PACKAGE



■ STANDARD □ AVAILABLE

**SAFETY/SECURITY**

	SABLE	PREMIER
Personal Safety System® for driver and front passenger with dual-stage front airbags, <sup>4</sup> safety belt pretensioners, safety belt energy-management retractors, safety belt usage sensors, driver-seat position sensor, crash severity sensor, restraint control module and Front-Passenger Sensing System	■	■
Front-seat side airbags <sup>4</sup>	■	■
Safety Canopy® System with side-curtain airbags <sup>4</sup> and rollover sensor	■	■
Anti-theft perimeter alarm	■	■
AdvanceTrac® electronic stability control	■	■
Battery saver	■	■
Belt-Minder® front safety belt reminder	■	■
Integrated keyhead transmitter remotes (2)	■	■
Lower anchors and tether anchors for child-safety seats (LATCH) on rear outboard seat positions	■	■
Safety belt restraint system with 3-point safety belts in all seating positions and front height-adjustable shoulder belts	■	■
SecuriCode™ keyless-entry keypad	■	■
SecuriLock® passive anti-theft ignition system	■	■
Side-intrusion door beams	■	■
SOS Post-Crash Alert System	■	■
SPACE (Side Protection And Cabin Enhancement) Architecture™	■	■
Traction Control	■	■

**AVAILABLE FEATURES**

	SABLE	PREMIER
18" 7-spoke chrome-clad aluminum wheels		□
Cargo Management System	□	□
Heated driver and front-passenger seats with 2 heat settings <sup>5</sup>	□	
Intelligent All-Wheel Drive (AWD)	□	□
Leather-trimmed seats	□	
Manual rear sunshade	□	□
Power-adjustable pedals with memory		□
Power Code™ Remote Start System	□	□
Power moonroof with one-touch-open/-close		□
Reverse Sensing System	□	
SIRIUS Satellite Radio (with complimentary 6-month subscription)	□	
SYNC voice-activated, in-vehicle communications and entertainment system	□	
Voice-activated Navigation System		□

**AVAILABLE PACKAGES**

	SABLE	PREMIER
<b>Interior Convenience Package</b> – Anti-theft perimeter alarm; Premium Sound System with AM/FM stereo/6-disc in-dash CD changer and MP3 capability; 8-way power driver seat with power recline; power-adjustable pedals; Dual-zone Electronic Automatic Temperature Control; automatic headlamps with wiper-activated headlamps feature; outside temperature display; and power, heated sideview mirrors with satin-finish accents and security approach lamps	□	
<b>Premier Wood Package</b> – Woodgrain accents on steering wheel and shift knob <sup>6</sup>		□
<b>VOGA Package</b> – Chrome accent finishes on grille, rear decklid appliqué and rear badging; 18" 7-spoke chrome-clad aluminum wheels with "VOGA" center caps; unique "VOGA" exterior badging; unique floor mats with embroidered "VOGA" logo; Cashmere-colored door-trim inserts; Cashmere-colored leather-trimmed seats with tone-on-tone Cashmere-colored stitching; Cyber Carbon instrument panel appliqué; and "VOGA" embroidered on front seatbacks (available only with White Suede or Tuxedo Black exterior colors and Charcoal Black interior)		□

**SABLE AVAILABLE ACCESSORIES**

Dual INVISSION® DVD Headrests <sup>7</sup>
Garmin® nüvi® Portable Navigation System <sup>7</sup>
Skyway SmartAlert™ <sup>7</sup>
Blaupunkt sound system upgrade <sup>7</sup>
Electrochromic mirrors
Remote start systems
Interior lighting kit
Vehicle security system
Bug deflector
Moonroof deflector
Side window deflectors
Wheel locks
Interior cargo net
Interior cargo organizer
Premium carpeted floor mats
All-weather floor mats
Ashcup/coin holder/Smoker's Pack

Visit [mercuryaccessories.com](http://mercuryaccessories.com) to use the Accessorizer, learn complete accessory details and view purchase instructions.



**BASE MODEL DIMENSIONS**

Wheelbase	112.9"
Length	202.1"
Width (excluding mirrors)	74.5"
Width (including mirrors)	82.9"
Height	61.5"
Front track	64.3"
Rear track	64.4"
Head room (front/rear)	39.6"/38.8"
Shoulder room (front/rear)	57.8"/57.6"
Hip room (front/rear)	53.7"/53.6"
Leg room (front/rear)	41.3"/41.2"

**CAPACITIES**

Fuel capacity	20 gal.
Seating capacity	5
Passenger volume	108.0 cu. ft.
Cargo volume	21.2 cu. ft.

**2009 EPA-ESTIMATED FUEL ECONOMY**

FWD	18 mpg city/28 hwy.
AWD	17 mpg city/24 hwy.

<sup>4</sup>Always wear your safety belt and secure children in the rear seat.  
<sup>5</sup>Requires leather-trimmed seats and Interior Convenience Package.  
<sup>6</sup>Not available with Light Camel interior.  
<sup>7</sup>Mercury Licensed Accessories.

©2008 SIRIUS Satellite Radio Inc. "SIRIUS," the SIRIUS dog logo and "The Best Radio on Radio" are registered trademarks of SIRIUS Satellite Radio Inc.

Audiophile is a registered trademark of Audiophile, Inc.

Garmin is a registered trademark of Garmin Ltd.

**STANDARD FEATURES**

**POWERTRAIN/FUNCTIONALITY**

3.5L DOHC Duratec V-6 engine with 6-speed automatic transmission	■	■
4-wheel disc Anti-lock Brake System (ABS)	■	■
4-wheel independent suspension	■	■
17" 7-spoke bright-aluminum wheels with P215/60R17 all-season BSW tires	■	
18" 7-spoke bright-aluminum wheels with P225/55R18 all-season BSW tires		■
Brake Assist	■	■
Front-wheel drive (FWD)	■	■
Hydraulic power steering	■	■

**EXTERIOR**

Automatic headlamps with wiper-activated headlamps feature		■
Dual chrome exhaust tips	■	■
Fixed-interval windshield wipers	■	■
Front fog lamps	■	■
Light-Emitting Diode (LED) taillamps	■	■
Power sideview mirrors with satin-finish accents	■	
Power, heated sideview mirrors with satin-finish accents, security approach lamps and memory		■
Reverse Sensing System		■
Satin-finish waterfall grille	■	■
Solar-tinted glass	■	■

**INTERIOR**

Accessory delay for power features	■	■
Adjustable front head restraints	■	■
Air conditioning		■
Dual-zone Electronic Automatic Temperature Control	■	
AM/FM stereo/single-CD player with clock		■
Audiophile® AM/FM Sound System with 6-disc in-dash CD changer, MP3 capability and 8 speakers	■	■
Audio input jack	■	■
Covered, illuminated, sliding visor vanity mirrors	■	■
Front center floor console with armrest, beverage holders and two-tiered storage	■	■
Leather-wrapped steering wheel with cruise and secondary audio controls; tilt column	■	■
Mercury SYNC® voice-activated, in-vehicle communications and entertainment system		■
Outside temperature display	■	■
Power door locks with child-safety rear door locks	■	■
Power windows with one-touch-up/-down driver-window feature	■	■
Premium cloth front bucket seats with 6-way power driver seat with manual recline	■	
Premium leather-trimmed heated front bucket seats, 8-way power driver seat with memory, and driver and front-passenger manual lumbar support		■
Rear 60/40 split-folding seat with tip-fold-flat feature	■	■
SIRIUS Satellite Radio (with complimentary 6-month subscription)		■
Universal Garage Door Opener		■

Comparisons based on 2008 competitive models (Standard 5-passenger Large Car class), publicly available information and Ford certification data at time of printing. Some features discussed may be optional. Vehicles shown may contain optional equipment. Features shown may be offered only in combination with other options or subject to additional ordering requirements or limitations. Dimensions shown may vary due to optional features and/or production variability. Following publication of the catalog, certain changes in standard equipment, options and the like, or product delays may have occurred which would not be included in these pages. Your Lincoln Mercury Dealer is the best source for up-to-date information. Lincoln Mercury reserves the right to change product specifications at any time without incurring obligations.





Get the ride you want. Whether you plan to lease or finance, you'll find the choices that are right for you at Ford Credit. Ask your Lincoln Mercury Dealer for details or check us out at [fordcredit.com](http://fordcredit.com).

**Ford Motor Company Insurance Services** Get Ford Motor Company quality in your auto insurance. Our program offers industry-leading benefits and competitive rates. Call 1.877.367.3847, or visit us at [fordvip.com](http://fordvip.com) for a no-obligation quote. Insurance offered by American Road Services Company (in CA, American Road Insurance Agency), a licensed agency and subsidiary of Ford Motor Company.

**Ford Extended Service Plan** For a purchase or lease, the Ford Extended Service Plan (ESP) gives you "Peace-of-Mind" protection designed to cover key vehicle components and protect you from the cost of unexpected repairs. Ask your dealer for an ESP, the only service contract backed exclusively by Ford and honored at all Ford Lincoln Mercury dealerships.

Peace of mind comes from a 3-year/36,000-mile bumper-to-bumper **New Vehicle Limited Warranty** that covers repair, replacement or adjustment of parts at no additional cost, as well as a 5-year/60,000-mile powertrain limited warranty which features no deductible and is fully transferable. Roadside Assistance for 5 years or 60,000 miles provides the security of knowing that help may be only a phone call away should you run out of fuel, lock yourself out of the vehicle or need towing. Your Lincoln Mercury Dealer will provide complete details.

**Custom Accessories** Genuine Mercury Accessories will be warranted for whichever provides you the greatest benefit: 12 months or 12,000 miles (whichever occurs first), or the remainder of your Bumper-to-Bumper 36-month/36,000-mile New Vehicle Limited Warranty. Contact your local Lincoln Mercury Dealer for details and a copy of the limited warranty. Mercury Licensed Accessories (MLA) are warranted by the accessory manufacturer's warranty. Contact your Lincoln Mercury Dealer for details regarding the manufacturer's limited warranty and/or a copy of the MLA product limited warranty offered by the accessory manufacturer.



MERCURY

NEW DOORS OPENED



[mercuryvehicles.com](http://mercuryvehicles.com)