

Specifications

ENGINE:

A 20° tilt to the left and a grouping of spark plugs, oil level gauge, distributor, oil filter and fuel pump on the right make servicing and checking easy. Five bearings support the crankshaft and a high camshaft system makes it possible to use shorter push rods for faultless valve follow at high speeds. The aluminum alloy cylinder head gives fast cooling and high strength.

Displacement: 4 cylinders in line, O H V. **Bore & stroke:** 2.95 x 2.40 in. **Compression ratio:** 9.0. **Maximum torque:** 61.5 ft. lb., 3,800 RPM. **Carburetor:** Down draft 2-barrel. **Cooling:** Water cooled by centrifugal pump. Pressurized radiator. Water capacity, 5 quarts. **Crankcase:** Capacity, 2.9 qts.

CLUTCH:

Single dry plate with diaphragm spring and mechanical actuation; facing diameter: 7.1 in.; clutch facing area, 40.9 sq. in.

ELECTRICAL SYSTEM:

12-volt battery; 300-watt alternator.

TRANSMISSION:

4-speed all synchromesh. **Shift Lever Position:** Center on Floor. **Gear Ratio:** 1st, 3.684—2nd, 2.050—3rd, 1.383—4th, 1.000—Reverse, 4.316. **Rear Axle Gear Ratio:** 4.222.

SUSPENSION:

Front: Coil springs, telescopic strut type shock absorbers, lower wishbones & transverse leaf springs.

Rear: Semi-elliptic leaf springs and telescopic shock absorbers.

BRAKES:

Hydraulic, 4 wheels; Drum diameter: 7.9 in.

DIMENSIONS:

Wheelbase, 90.9 in.—Tread, Front, 48.4—Rear 48.0—Overall Sedan Length 152.8; Wagon 154.0—Overall Sedan Width 58.5; Wagon 58.7—Overall Sedan Height 54.3; Wagon 55.1—Ground Clearance 6.7.

TIRE SIZE: 6.00-12, 4 ply.

WEIGHT: Curb Weight Sedan 1,642 lbs.; Wagon 1,730 lbs.

PERFORMANCE: Maximum Speed 87 mph—Maximum Cruising Speed 75 mph—Acceleration (0-55, mile): 20.3 sec.




Optional equipment

AM RADIO: Features push-button operation and hi-fi quality sound.

STEREO TAPE PLAYER: Surrounds you with hi-fidelity sound. Plays eight track cartridge.



The Toyota policy of continual improvement in design and manufacture requires specifications, equipment and price be subject to change without notice.

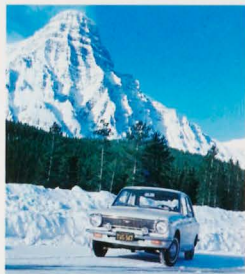
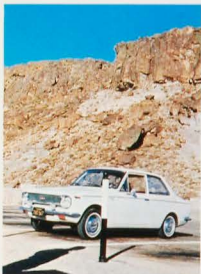
 **TOYOTA, Japan's No. 1 Automobile Manufacturer**

Toyota Motor Distributors, Inc., Main Office, 200 West 140th St., Commerce, Calif. 90022 Eastern Office, 333 Johnson Ave., Newark, N. J. 07102 Mid Southern Toyota Ltd., 1240 North Logan St., Chicago, Ill. 60614 Printed in Japan. No. 77660



Cut-gut on the road to fun in America's newest set of wheels.





Toyota Corolla is no stranger to this country. In fact, two test Corollas have lived here for more than a year and traveled thousands of miles! Corolla has been exposed to the worst and the best of our driving conditions. It performed like a native. The winter cold of the Northern Rockies, the summer heat of Arizona . . . the flat long drives of Florida, the hairpin turns of the Great Divide . . . the leisurely country roads of up-state New York, the hectic freeways of California . . . all were met and conquered by Toyota Corolla.

Corolla has been up-and-down and in-and-out of every kind of driving condition found in the U.S.A.

So, you can give it any kind of driving job you want, Toyota Corolla will know what to do. And you'll feel at home in Corolla. It's designed to respond to American driving habits. Buttons, dials, push-things and pull-things . . . all are right where you are used to having them. Toyota Corolla is America's newest set of wheels, but when you return to where you've parked yours, you'll feel like you've come back to an old friend.

Ever wished you could buy a car just for the fun of it? The new Toyota Corolla 2-door sedan makes that wish come true. In fact, you'll get much more than you bargain for. Its 60 hp engine gives you snappy performance unexpected in its class. Climbs as high as 87 mph, cruises easily at 75 mph. Passing - a breeze! Sips gas, too. You should get 30 to 35 miles on one gallon. And it feels at home in any life you want to lead. City capers . . . country carrying on . . . weekend wandering, all are more fun in America's newest way to get where you want to go!

COROLLA 2-door sedan

Toyota Corolla makes the feature scene with a bag-full of surprising extras you don't have to shell out extra for:

1. 4-on-the-floor, all synchromesh gives you zip-zip-zip for smooth going action.
2. Safety padded dash, soft control knobs and an instrument panel that looks you right square in the eye are just a few examples of how Corolla makes driving safer and easier for you.
3. Noise proofing insulation completely surrounds you . . . very hush-hush.
4. 2-speed electric windshield wipers and washers . . . down with dirty windshields.
5. Fully-reclining seats are available at no extra cost . . . with the touch of a lever, you can tilt the seatback to any angle you choose. Front door arm rests furnished as standard.
6. Rear seat is wide enough for two. Ideally designed arm rests and ash trays are provided on both walls.
7. Surprising trunk usually holds more than you think it will.
8. Rear windows are as big as all outdoors . . . even open to let some of the outdoors in.

*White side wall tires and tinted glass all around are optionals at slight cost.





Here's America's newest way to go wagoning! The Toyota Corolla 2-door wagon.

It combines the goingest 60 horses you'll ever find with sedan comfort for four and toting room for golf bags, picnic baskets, beach umbrellas, luggage or whatever it is you're taking along for the fun of it. For hauling jobs, fold down the rear seat and you've got a good-sized flat deck that puts some pretty big things on the move. And fast. Gets easily up to 75 mph. Will even top 87 when you ask for it.

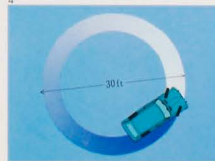
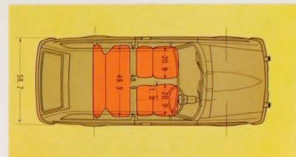
Does it all in the 30 to 35 miles per gallon range, too. Be the first in your crowd to have the goingest, newest thing in wagons!

COROLLA 2-door wagon

Take a look at this load of wagon features:

1. Thanks to the compact dimensions, you can squeeze your way through tight places in traffic and zip into short parking spaces.
2. 4-on-the-floor all synchromesh transmission adds a sporty gait to your wagon traveling.
3. Betting on looks? Toyota Corolla 2-door station wagon is a sure thing.
4. Rear door swings up high to give you easy access to Corolla's wide open flat spaces.
5. Deep foam cushion rear seat gives passengers sedan comfort. Folds down to give you big room for a haul-in.
6. Newly designed, right-to-left operating choke lever, cigarette lighter and ash tray... all part of some pretty fancy fix'ns in our low priced wagon.
7. Does circles around anything under 30 ft.
8. Good looking grille and hood line... a face anyone can be proud of.

*White side wall tires and tinted glass all around are optionals at slight cost.



7

8

Check the instrument panel. A heavily padded upper dashboard protects you from injury in severe impact. Two dial type gauges are deeply recessed to eliminate distracting reflections.

Each control knob has picture-symbol identification that tells you its function.



The new Corolla 1100 is the best performing car in its class. It has a 1.1 litre engine that delivers 60 HP (SAE)—gives smooth power from a standing start all the way up to high speed cruising. The outstanding operation of this engine comes from such advanced features as: aluminum alloy combustion chambers and a high compression ratio, a five-bearing crankshaft and high cam placement.

Road performance is really exceptional: top speed of 140 km/hr. (87 mph) without straining, acceleration from a standing start to 100 km/hr. (62 mph) in 16.0 seconds and unbelievably low fuel consumption of 13 km/litre DIN (36.7 miles/imp. gal., 30.6 miles/U.S. gal.) at normal speeds. Steering action is light, but extremely responsive. A manual direct shifting, all-synchro,

four-speed transmission, with close gear ratios for flexibility—you can shift up and down quickly according to road conditions and running speeds. No clutch motoring: if you prefer—by choosing the fully automatic TOYOGlide. Just select "D" for drive, press the accelerator to go and the brake to stop—TOYOGlide (optional) makes every driver an expert.

SPECIFICATIONS

ENGINE: Four cylinders in line, O.H.V.; bore 75 mm. (2.95 in.); stroke 61 mm. (2.40 in.); piston displacement 1,077 c.c. (65.8 cu.in.); compression ratio 9.0 to 1; max. output 60 b.h.p. (SAE) at 6,000 rpm; max. torque 8.5 m.kg (61.5 ft-lb) (SAE) at 3,800 rpm.

The cylinder block is inclined 20 degrees to provide room for the high efficiency manifolds. This design also sits the engine low under the bonnet for a lowered centre of gravity. Accessibility of engine accessories makes servicing quick and easy. The double-chain driven, high position camshaft and shorter pushrods give more efficient high speed operation and increased horsepower. An aluminum alloy cylinder head permits better engine cooling.

FUEL: Down draft, two-barrel carburettor; mechanical type diaphragm pump; paper element air cleaner; fuel tank capacity 36 litres (7.9 Imp.gal.).

COOLING: Pressurized radiator with centrifugal pump; circulation controlled by thermostat; water capacity 4.7 litres (4.1 Imp.qts.).

LUBRICATION: Full pressure force-feed by trochoid pump; paper element oil filter; crankcase capacity 2.7 litres (2.4 Imp.qts.).

CLUTCH: Single dry plate with diaphragm spring and mechanical actuation; facing diameter 180 mm. (7.1 in.); clutch facing area 264 sq.cm. (40.9 sq.in.).

BATTERY: Battery, coil and distributor with mechanical and vacuum control; 12-volt 40 amp. hr. battery; 300-watt alternator.



TRANSMISSION: All 4 forward gears and synchromesh, manually controlled by floor-mounted, mechanically operated stick shift in normal H-pattern. Gear ratios: 1st 3.684, 2nd 2.050, 3rd 1.383, 4th 1.000, reverse 4.316.

REAR AXLE: Semi-floating, hypoid gear drive; final reduction gear ratio, 2- and 4-door Sedan: 4.222 to 1, Station Wagon: 4.444 to 1.

SUSPENSION: Front: Coil springs with telescopic shock absorber struts, lower wishbone and transverse leaf spring.

The Corolla's strut-type front suspension system contributes to the car's interior quietness by keeping road shock to a minimum. A transverse leaf functions as a stabilizer.

Rear: 2- and 4-door Sedan: Semi-elliptical leaf springs and telescopic shock absorbers. **Station Wagon:** Progressive type, semi-elliptical leaf springs with helper springs and telescopic absorbers.

A distinctive feature of TOYOTA, in which

DIMENSIONS AND WEIGHTS

	2- and 4-door Sedan	Station Wagon
Overall length	3,845 mm. (151.4 in.)	3,895 mm. (153.3 in.)
Overall width	1,485 mm. (58.5 in.)	1,490 mm. (58.7 in.)
Overall height	1,380 mm. (54.3 in.)	1,400 mm. (55.1 in.)
Wheelbase	2,285 mm. (90.0 in.)	2,285 mm. (90.0 in.)
Tread, front	1,230 mm. (48.4 in.)	1,230 mm. (48.4 in.)
Tread, rear	1,220 mm. (48.0 in.)	1,220 mm. (48.0 in.)
Ground clearance	170 mm. (6.7 in.)	170 mm. (6.7 in.)
Kerb weight	2-door 705 kg. (1,555 lb.)	735 kg. (1,620 lb.)
4-door	725 kg. (1,600 lb.)	

PERFORMANCE (with manual transmission)

Max. speed	140 km/h (87.0 mph)	130 km/h (81.0 mph)
Max. cruising speed	120 km/h (75.0 mph)	115 km/h (72.0 mph)

the main leaf, with interleafs at top and bottom, is sandwiched between auxiliary leaves. Wheel reaction, vibration and noise are all reduced, especially when running over rough roads and on highways.

BRAKES: Hydraulic brakes operating on all wheels; drum diameter 200 mm. (7.9 in.); total lining area 499.2 sq.cm. (77.38 sq.in.); parking brake operates mechanically on rear wheels.

STEERING: Worm and sector roller type gearbox; ratio 18 to 1.

WHEELS AND TYRES: Pressed steel disc wheels; 2- and 4-door Sedan: 6.00-12 4-ply tyres, Station Wagon: 5.00-12 6-ply tyres.

*Toyota Motor reserves the right to alter prices and any details of specifications and equipment without notice. Details of specifications and equipment are subject to change to suit local conditions and requirements.



TOYOTA COROLLA 1100

2-door Sedan, 4-door Sedan, Station Wagon



TOYOTA

TOYOTA MOTOR CO., LTD. TOYOTA MOTOR SALES CO., LTD. KE10-FR-100-10V-E-3 (PRINTED IN JAPAN, NO. 704)



TOYOTA COROLLA 1100 Station Wagon

There's a new Toyota Corolla 1100 line... two-door, four-door and station wagon. They're practical cars, but they're elegant, too... high performance and economy both in one sporty package. You can have them either with stick-shift or Toyoglide automatic transmission.

Toyota builds them for people who want more motoring pleasure and safety as well. See these new Corollas at your nearest TOYOTA dealer.



TOYOTA COROLLA 1100 4-door Sedan



TOYOTA COROLLA 1100 2-door Sedan

The new Corolla 1100 is an open-the-moment design for motoring.

Eye-catching styling that has elegance combined with a sports car look. The large, powerful headlamps, with their efficient dipping and flashing system, give you better highway illumination. The three-section tail lamps, in a distinctive vertical shape, signal your stops or turns to following cars and also house back-up lights. Thanks to the Corolla's compact dimensions, you can thread your way through tight places in traffic and zip into short parking spaces. A spacious trunk compartment carries plenty of luggage for everybody. The unitized body construction protects you from accident injuries. In addition, TOYOTA's excellent electrophoresis process of undercoating and the electrostatic painting method protect the Corolla for a long, long time against corrosion.



The moment you get into a Corolla, you'll really be surprised. What'll you find? Brightful appointments. Functional instruments. Lots of room. And a real



riding comfort.

Sit in the driver's seat. Notice that the side windows curve outward, giving you more shoulder room. Feel the deep cushioned, luxuriously upholstered seats, that give you real riding comfort. The separate front seats can be shifted forward and back and are contoured to fit everyone. (Fully reclining seats are available as an option: choose the angle you want to incline the seatback's to the rear with the touch of a lever - even very tall people can drive at arms' length, if they like.)

Legroom? Of course, plenty. Enough to let you stretch. And the floor is covered with handsome rubber mats. The new Corolla 1100 has a durable and efficient heater-defroster system... air temperature is controlled by a dashboard mounted lever with "high" and "low" settings.

Safety is part of a Corolla, too. The interior walls are covered with impact-absorbing materials. Window winding cranks are safety, low-profile design. Door

handles are recessed. Seat-belts are available at slight extra cost. (Heavy-duty anchorages are already built-in.) Other safety features are an inside rear-view mirror that drops off on impact, windshield wipers that include a washing system, push-button type door latches on all doors, soft control knobs with picture-symbol identification and optional front disc brakes.

QUIETNESS is one of the new Corolla 1100's most striking features and is a triumph of Toyota's extensive research and testing. The engineers have succeeded in banishing noise and vibration from the interior of the car.

Ideal for your wife's shopping excursions, week-end trips and every sort of family outing. It's extremely roomy and convenient. There's a flat floor cargo compartment, a wide, swing-up type rear gate for easy loading and unloading, a fold down rear seat and optional floor mats. The luxurious appointments are just the same as those on the sedans.



Takes 4 with ample room for luggage... Surprisingly roomy space with generous cargo room (960 cu. in. = 12.9 cu. ft. = 48.8 in. x 48.8 in. x 48.8 in.) features seldom seen in its class.



If more load space is needed... simply fold down the rear seat and you have a completely flat floored, large area cargo space (1400 cu. in. = 17.2 cu. ft. = 48.8 in. x 48.8 in. x 48.8 in.).



Fully reclining bucket seats (optional)



Covered sunshade for rear window (optional)



Wagon has flat floor, swing-up gate



All-klms safety type, picture identification



TOYOGLIDE, with floor stick selector



Big luggage compartment holds more



Both sun visors thickly padded



Front disc brakes for non-fade stops (optional)



Push-button tuning radio (optional)

Hinged window for better ventilation

Specifications

ENGINE:

A 20° tilt to the left and a grouping of spark plugs, oil level gauge, distributor, oil filter and fuel pump on the right make servicing and checking easy. Five bearings support the crankshaft and a high camshaft system makes it possible to use shorter push rods for faultless valve follow at high speeds. The aluminum alloy cylinder head gives fast cooling and high strength.

Displacement: 4 cylinders in line, O.H.V. **Bore & stroke:** 2.95 x 2.40 in. **Compression ratio:** 9.0 **Maximum torque:** 61.5 ft. lb./3,800 RPM **Carburetor:** Down draft 2-barrel **Cooling:** Water cooled by centrifugal pump. Pressurized radiator. Water capacity, 5 quarts. **Crankcase:** Capacity, 2.9 qts.

CLUTCH:

Single dry plate with diaphragm spring and mechanical actuation; facing diameter: 7.1 in.; clutch facing area, 40.9 sq. in.

ELECTRICAL SYSTEM:

12-volt battery; 300 watt alternator.

TRANSMISSION:

4-speed all synchromesh **Shift Lever Position:** Center on Floor **Gear Ratio:** 1st, 3.684 - 2nd, 2.050 - 3rd, 1.383 - 4th, 1.000 - Reverse, 4.316 **Rear Axle Gear Ratio:** 4.222.

SUSPENSION:

Front: Coil springs, telescopic strut type shock absorbers, lower wishbones & transverse leaf springs.

Rear: Semi-elliptic leaf springs and telescopic shock absorbers.

BRAKES:

Hydraulic, 4 wheels; Drum diameter: 7.9 in.

DIMENSIONS:

Wheelbase, 90.0 in. — Tread, Front, 49.0 — Rear 48.0 — Overall Length 152.8 — Overall Width 58.5 — Overall Height 53.0 — Ground Clearance 6.7.

TIRE SIZE:

 6.00-12, 4 P.R.

PERFORMANCE: Maximum Speed 90 mph — Maximum Cruising Speed 75 mph — Acceleration (0-1/4 mile) 20.3 sec.




Optional equipment

AM RADIO: Features push-button operation and hi-fi quality sound.

STEREO TAPE PLAYER: Surrounds you with hi-fidelity sound. Plays eight track cartridge.



The Toyota policy of continual improvement in design and manufacture requires specifications, equipment and price be subject to change without notice.

 **TOYOTA, Japan's No. 1 Automobile Manufacturer**

Toyota Motor Distributors, Inc., New Office, 205 West 33rd St., Toronto, Ont. M5V 1K1, Canada. Office, 221 Johnson Ave., Newark, N.J. 07102. Multinational Toyota Ltd., 1640 North LaSalle St., Chicago, Ill. 60614. Printed in Japan. No. 77661

TOYOTA
COROLLA
Sprinter





Get on your mark... get set... go!
 On the newest set of fastback wheels around.
 You'll be off and running with a 60 horsepower
 engine... lets you step up to 90 mph... stays
 in stride easily at 75 mph... Gives you
 marathon mileage, too. Each gallon puts 30
 to 35 miles under you. And it pads along
 about as quiet as a cat out hunting. Toyota
 Corolla Sprinter gives you a good run for the
 money... anyway you want to look at it.

*Toyota Corolla Sprinter has the style... performance
 ... features... and low, low price to place it
 lengths ahead of any car in its class!*

1. Glare-resistant, impact absorbing dash; padded door armrests and deep foam cushioned, fully-reclining contoured bucket seats put you up front in safety, convenience and comfort.
 2. 4-on-the-floor, all synchromesh transmission adds a sporty gait to your sprinting.
 3. 2-speed electric windshield wipers and washers... squirt, squirt; wipe, wipe and it all looks good and clear ahead.
 4. A trunk that's big enough to give you the inside track on take-alongs.
 5. You don't have to send your eyes wandering to find out what's going on. Two big deeply recessed dials look you square in the eye... tell you all you want to know.
 6. Aerodynamic design and styling give you a fast look... cut wind-noise hang-up.
 7. No hassle with pick-up... Sprinter matches cars with even bigger engines.
 8. Take the gang along too. Sprinter's back seat easily handles two... even three if they're close friends.
 9. Tilt! 4-cylinder engine is turned 20° to the left. Makes checking and servicing a snap! Spark plugs, oil level gauge, distributor, oil filter and fuel pump are conveniently grouped for easy access.
- *White side wall tires and tinted glass all around are optional at slight extra cost.*



7

9