

OH
WHAT
A
FEELING
TOYOTA

1982 CARS AND TRUCKS
BY TOYOTA

THE 1982 TOYOTAS: ONE RIGHT CHOICE AFTER ANOTHER

If you're thinking about a new car or truck, welcome to a lineup of vehicles designed to make your choice very easy: the 1982 Toyotas. Because everything you want—from economy, reliability and quality to exceptional styling—is, as you'll see, the substance of every Toyota.

Dependability. A Toyota is a decision you'll like living with year after year, for its designed and built for dependability.

Value. There's more to value than a reasonable sticker price: A Toyota includes a long list of standard features and, of course, there's traditional Toyota fuel efficiency** and low maintenance.

Parts and service. Toyota's network of more than 1000 dealers nationwide means service specialists and Genuine Toyota Parts are nearby.

The right choice. There's a Total Economy Toyota for you. So take your choice. You know it'll be a good one.

Starlet. The highest miles-per-gallon car Toyota builds.

Celica Supra. Totally new, the Supra, with its race-bred Twin Cam powerplant,

is the ultimate performance Toyota.

Celica. All new, sporty design. Born of automotive excellence that makes it right for today.

Corolla. Efficiency, value and style in the world's best-selling car series. Includes front-wheel drive Corolla Tercel, the lowest-priced Toyota.

Corona. All-around style, comfort, quality and value.

Cressida. Sophistication and luxury in the plushest of all Toyotas.

Truck and Cab/Chassis. Built tough, with economy and car-like comforts. 1/2 Ton,

3/4 Ton, 4-Wheel Drive, Diesel† and unfinished Cab/Chassis.

Land Cruiser. Built for rugged 4-wheel drive off-roading. Hard-top or Wagon.



STARLET



STARLET

Starlet

From its exceptional gas mileage*—the best of any Toyota—to its beautifully trim sticker price** Starlet for 1982 is right for the times.

In its heart lie soundness, dependability and thrift. A snappy 1.3 liter 4-cylinder engine, 5-speed overdrive transmission and power-assisted front

disc brakes are all standard, as are reclining front bucket seats, flip-down rear seat, electric tachometer and more.

High mileage. Loads of standard features. And dependability through and through. Compare Starlet feature-for-feature—for to know this small wonder is to love it.

*Manufacturers suggested retail price. Actual retail price will vary.
**See EPA mileage statement on inside back cover.
†Not available in California.
Shown with optional equipment. See your Toyota dealer for details.

*See EPA mileage statement on inside back cover.
**Manufacturers suggested retail price. Actual retail price will vary.
Shown with optional equipment. See your Toyota dealer for details.



SUPRA



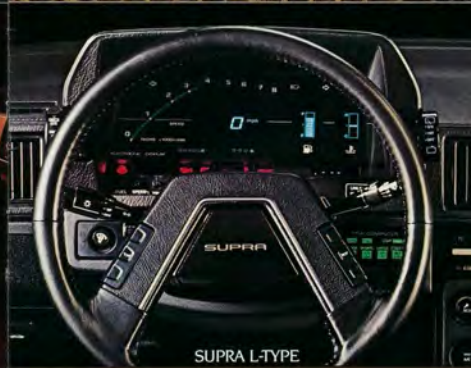
SUPRA L-TYPE



SUPRA



SUPRA



SUPRA L-TYPE



SUPRA L-TYPE

Celica Supra

Here, at last, is the right stuff. The shape of the totally new Supra is, in a word, stunning. From concealed headlights to upswept tail spoiler, the effect is positively *Supersonic!* The sleek body, crafted into an energy-efficient wedge shape, helps reduce wind noise for hushed, comfortable travel at cruising speeds.

What appears at first glance to be a striking blend of sweeping lines and smartly-styled angles created solely to please the eye is also a shape carefully created to reduce wind resistance. Its bold stance tells you that this is, by any measure, a thoroughbred road machine, an automobile as much at home on a

serpentine mountain road as on an interstate highway stretching arrow-straight to the horizon.

Under the low hood lies a race-bred, electronically fuel-injected 2.8 liter Twin Cam 6-cylinder engine. And inside the cockpit is a myriad of grand touring comforts and conveniences. The Supra

L-Type was created for motoring in refined, luxuriously appointed comfort with performance on a par with its Supra running mate. Available on Supra L-Type is a Digital Electronic Display instrument panel with Trip Computer that calculates and displays travel information.

If it's been too long since you've

driven an automobile built from the ground up for sure-footed maneuverability and responsive handling, then the new Supra will bring back the feeling.

A look at the astounding array of features on the following pages will confirm that for 1982 Celica Supra is, indeed, an automotive *tour de force*.



Supra's anthropometrically designed Driver's Sport Seat has unique, adjustable pneumatic lower back (lumbar) support system.



4-wheel independent suspension



Supra is equipped with independent rear suspension for superb handling and roadability, a 5-speed overdrive transmission and 4-wheel power-assisted ventilated disc brakes.



0.348 drag coefficient

twin cam • 2.8 liter • 145 bhp • 5200 rpm



electronic fuel injection



Electronic Fuel Injection (EFI) system is computer-controlled to deliver correct air/fuel mixture to cylinders. Twin Cam engine has fabric/rubber camshaft drive belt (top) for quieter operation, reduced maintenance.



Supra Features

Nothing is overlooked in the formulation of these great road machines. For increased stability, operating efficiency, and reduced wind resistance, the Supra body has a drag coefficient of just 0.348. Specially designed running gear includes rack-and-pinion steering with variable power assist to give you

superb handling and positive road feel. Independent rear suspension and steel-belted radial tires provide outstanding traction and a smooth ride. Moreover, you'll stop with the confident feel of power-assisted and ventilated 4-wheel disc brakes.

The type of powerplant that gives

many world-class racing drivers the winning edge is yours in Supra: a high performance twin camshaft engine. Supra's new 6-cylinder 2.8 liter Twin Cam powerplant develops 145 horsepower and is electronically fuel-injected for optimum efficiency.

A 5-speed overdrive transmission is

standard, and 4-speed automatic overdrive is available on Supra L-type. Plushly upholstered seats, softly padded dash and sound-absorbing carpeting highlight an interior where automated amenities are the rule: power door locks, power windows, power steering with tilt wheel, and automatic tempera-

ture control air conditioning. The list is virtually endless. And, of course, depending on the model, you can choose such options as Digital Electronic Display instrument panel, power sunroof, and leather seat trim.

The world of the 1982 Celica Supra is a new world of motoring pleasure.



CELICA GT LIFTBACK



CELICA GT LIFTBACK



CELICA GT



CELICA GT



CELICA GT and ST SPORT COUPES

Celica

The new-generation Toyota Celicas —sleek GT Liftback and strikingly handsome GT and ST Sport Coupes—strongly reflect their lineage born of the magnificent 1982 Celica Supra touring machines.

The new GT Liftback's design is for more than just show. With its unclut-

tered nose design, retractable halogen headlights and rear deck spoiler, the body's drag coefficient is minimized for superior aerodynamic efficiency. And there's even more for go: a spirited 2.4 liter 4-cylinder engine; a new 5-speed overdrive gearbox; an optional 4-speed automatic overdrive

transmission (GTs only); new power-assisted and ventilated front disc brakes; MacPherson strut front suspension and new rack-and-pinion steering for excellent handling.

Depending on the model you choose, you'll find standard features like a tilt steering wheel, reclining front bucket

seats, fold-down split rear seat backs, electronic AM/FM/MPX 5-speaker stereo receiver, and much more.

For those who prefer the crisp, elegant roofline of a formal town coupe, the Celica GT and ST Sport Coupes combine those lines with the excitement and handling the Celica name is

famous for. They share with the GT Liftback low-drag design, sporty performance, outstanding roadability, and meticulous quality.

GT Liftback, GT Sport Coupe, ST Sport Coupe. They're a beautiful balance of performance, economy and design unique to the Celica name.



COROLLA SR5 HARDTOP



COROLLA DELUXE SEDANS



COROLLA SE



COROLLA SR5 LIFTBACK



COROLLA DELUXE LIFTBACK



COROLLA DELUXE WAGON



COROLLA SR5 SPORT COUPE



COROLLA DELUXE WAGON

Corolla

The 1982 Corollas welcome you to a world of stylish practicality and affordable, dependable operation. Corollas have a lot going for them, and for you. Like high mileage*, lasting reliability, and low maintenance—in a choice of eight different models in all.

The Corolla SR5 Hardtop is one of

the most exciting economy cars on the road. Like all Corollas, it's powered by a responsive, fuel-efficient 1.8 liter 4-cylinder engine. And like most Corolla models, it's standard equipped with a smooth, easy-on-the-engine 5-speed overdrive transmission. The SR5 Hardtop also offers an optional 4-speed

automatic overdrive transmission. Corolla SR5 Sport Coupe struts a wind-piercing design with rear hatch and is dressed up with the sporty conveniences of all Corolla SR5s: fully-reclining front bucket seats, full instrumentation and AM/FM/MPX stereo radio.

Two great looking, great driving

Liftback models—SR5 and Deluxe—open wide to pack in your good times.

And if an affordable, economical sedan is more your style, step right up to three perky practical choices. 2-Door Deluxe, 4-Door Deluxe and 2-Door Sedan. Finally, for families who take to extra-roomy wagon-wheeling, there's

the 5-Door Corolla Deluxe Wagon.

Whichever Corolla is for you, so is a long list of standard features: fully transistorized ignition, MacPherson strut front suspension, power-assisted front disc brakes. The list goes on. And so does the traditional Toyota quality, economy and dependability.

*See EPA mileage statement on inside back cover. Shown with optional equipment. See your Toyota dealer for details.



COROLLA TERCEL SR5 and DELUXE LIFTBACKS



COROLLA TERCEL 4-DOOR DELUXE SEDAN



COROLLA TERCEL SR5



COROLLA TERCEL 2-DOOR and 2-DOOR DELUXE SEDANS

Corolla Tercel

When the rest of the fuel-conscious world is tightening their belts, you'll be breathing a lot easier in a front-wheel drive Corolla Tercel. Because all five models—Liftbacks, 2-Door and 4-Door Sedans—offer a comforting combination of road-gripping traction, super-high mileage* and interior spaciousness.

Bold new side striping and tungsten halogen headlights accent the SR5 Liftback. Inside, there's the comfort of attractive cloth seats, AM/FM/MPX stereo radio, even a 5-speed overdrive transmission. A 3-speed automatic transmission is standard on the economical Deluxe Liftback. Characteristic

of all Corolla Tercels is incredible roominess; elimination of a driveshaft tunnel and positioning of rear wheelwells allows extra room in the back seat. And up front there's more leg room than in many bigger cars.

Corolla Tercel offers three thrifty sedan models: 2-Door Deluxe, 4-Door

Deluxe, and the lowest-priced** Toyota, the 2-Door Sedan. On the 4-Door Deluxe Sedan, fold-down split rear seat backs allow inside access to the lockable trunk, and let you carry long items like skis or fishing gear.

Corolla Tercel is powered by a 1.5 liter 4-cylinder SOHC engine with plenty

of get-up-and-go and comes standard equipped with a long list of no-extra-cost features built right in. And all the 1982 Liftbacks and Sedans are designed for easy, economical upkeep, dependable performance and outstanding handling—to keep the rakish, roomy Corolla Tercels far out in front.

*See EPA mileage statement on inside back cover.
**Manufacturer's suggested retail price. Actual retail price will vary. Shown with optional equipment. See your Toyota dealer for details.



CORONA LUXURY EDITION SEDAN (with liftback)



CORONA LUXURY EDITION LIFTBACK



CRESSIDA LUXURY SEDAN



CORONA LUXURY EDITION



CORONA DELUXE WAGON



CRESSIDA LUXURY SEDAN



CRESSIDA LUXURY WAGON

Corona

From its crisp contemporary styling and appointments to its meticulous quality, Corona exemplifies value throughout. On all models—plush Luxury Edition Liftback or Sedan or practical Deluxe Wagon—a 2.4 liter 4-cylinder SOHC engine is standard, as are MacPherson strut front suspen-

sion and power-assisted front disc brakes. Depending on the model you'll also find power steering, a 5-speed overdrive transmission or 4-speed automatic overdrive transmission.

Whichever Corona is for you, you'll find it's beautifully equipped for comfortable and stylish motoring.

Shown with optional equipment. See your Toyota dealer for details.

Cressida

The Cressida Luxury 4-Door Sedan and 5-Door Wagon feature refinements of cars costing much more. Included are a powerful 2.8 liter 6-cylinder overhead cam engine, Electronic Fuel Injection, innovative 4-speed automatic overdrive transmission, power steering, power windows and more. Its stereo

sound system features a 4-speaker electronic AM/FM/MPX receiver.

It is in fact, so complete that only a few ultra-options are available, such as an electronic Trip Computer or the Luxury Sedan's luxurious leather seat trim (shown here). Cressida is perhaps the most superb value in its field.

Shown with optional equipment. See your Toyota dealer for details.



TRUCK



4WD SR5 SPORT TRUCK



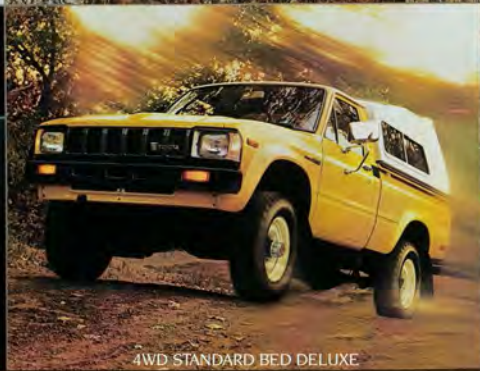
SR5 SPORT TRUCK



LONG BED DIESEL DELUXE



SR5 SPORT TRUCK



4WD STANDARD BED DELUXE



STANDARD BED and LONG BED DELUXE



COMMERCIAL CAB/CHASSIS (UNFINISHED)

Trucks

What'll it be? A truck for hauling cargo in car-like comfort, for four-wheeling in the outback, for turning heads through city streets? Whatever your needs in a small truck, there's a Toyota Truck for you.

Toyota SR5 Sport Trucks are the show-stoppers. The Deluxe Trucks will

pull their weight on any job, in any crowd. The Standard Truck is all business at a down-to-business price.* These trucks can handle a 1400 lb. payload (including occupants, equipment and cargo). There's also a Toyota Diesel** with 22 liter diesel engine power for durability and fuel economy.†

Toyota's 4-Wheel Drive Trucks, available in SR5 Sport and Deluxe models, are well-equipped with off-roading necessities like steel skid plates, front tow hook, and more.

There are Toyota Trucks for special needs, too: the 3/4 Ton for extra payload capacity, and unfinished Camper and

Commercial Cab/Chassis for custom bodies or custom beds.

All gasoline-powered Toyota Trucks have a 2.4 liter SOHC engine that puts out hefty torque and horsepower *and* great fuel economy. They're loaded with a long list of standard features like power-assisted front disc brakes:

5-speed overdrive; 4-speed synchromesh, or optional 4-speed automatic overdrive transmission, depending on the model you choose. And there are plenty of dress-up options, too.

No wonder Toyota Trucks consistently rank as the best-selling, most popular small trucks in America!

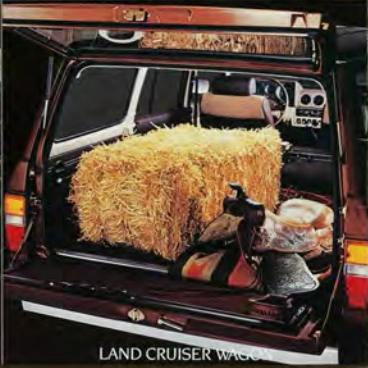
*Manufacturers suggested retail price. Actual retail price will vary.
**Not available in California. †See EPA mileage statement on inside back cover.
Shown with optional equipment. See your Toyota dealer for details and packaged specifications.



LAND CRUISER WAGON and HARDTOP



LAND CRUISER WAGON



LAND CRUISER WAGON

DEPENDABLE VEHICLES, PARTS & SERVICE

Toyotas are designed and built for dependable operation. But the story doesn't end there. To help keep your Toyota performing at peak efficiency, more than one thousand Toyota dealers throughout the U.S. give you the added reassurance of having quality parts and service available should you need them.

Genuine Toyota Replacement Parts, like the original parts in your new car or truck, are manufactured to fit right and to run right.

Toyota, its dealers and distributors have an inventory of parts valued at more than a quarter of a billion dollars. A sophisticated, computerized inventory control system keeps Toyota's parts supply "pipeline" moving smoothly. We believe this results in one of the best parts supply systems, or "fill rates," in the automotive industry. If a needed part isn't already on the shelf at your nearby Toyota dealer, it should be

readily available from one of the many regional Toyota parts warehouses located from coast to coast.

As a Toyota owner, you'll not only want parts with original equipment quality, but also top-notch service personnel and facilities when it's time to have your Toyota serviced. Toyota dealers have the special tools to do the job efficiently, and technicians factory-trained in the latest methods for servicing your Toyota. Additionally, over 90 percent of Toyota dealers voluntarily participate in a special program for their technicians that certifies their professional training by the

National Institute for Automotive Service Excellence (NIASE).

Quality and dependability—in our vehicles, parts and service—is our never-ending goal. Millions of satisfied Toyota owners know it. And the 1982 Toyotas show it.



Land Cruiser

The 1982 4-Wheel Drive Land Cruiser Hardtop and Wagon can get you into some of the world's worst places. And out again. They're powered by a 42 liter 6-cylinder engine. A 4-speed transmission and 2-speed transfer case are standard, as is a long list of equipment that's often optional on many 4x4s. The

Wagon takes along most of the Hardtop's heavy-duty features, plus plenty of carpeted cargo space and easy-going standards like power steering with tilt wheel, AM/FM/MPX stereo radio, cloth upholstery, and more.

The Land Cruiser for 1982. It's a four-wheelin' legend—ready to go.

Shown with optional equipment. See your Toyota dealer for details.

*EPA STATEMENT. Consult your Toyota dealer for EPA mileage figures.

**Remember. Compare this estimate to the EPA "Estimated MPG" of other cars. You may get different mileage depending on how fast you drive, weather conditions and trip length.

Specifications and equipment are based on the available information at time of printing and are subject to change without notice. Some cover vehicles and others shown with optional equipment. For information on additional options and accessories, contact your Toyota dealer.

†Headlights, parking lights and foglamps on Celica. Supras illuminated for illustration purposes only.