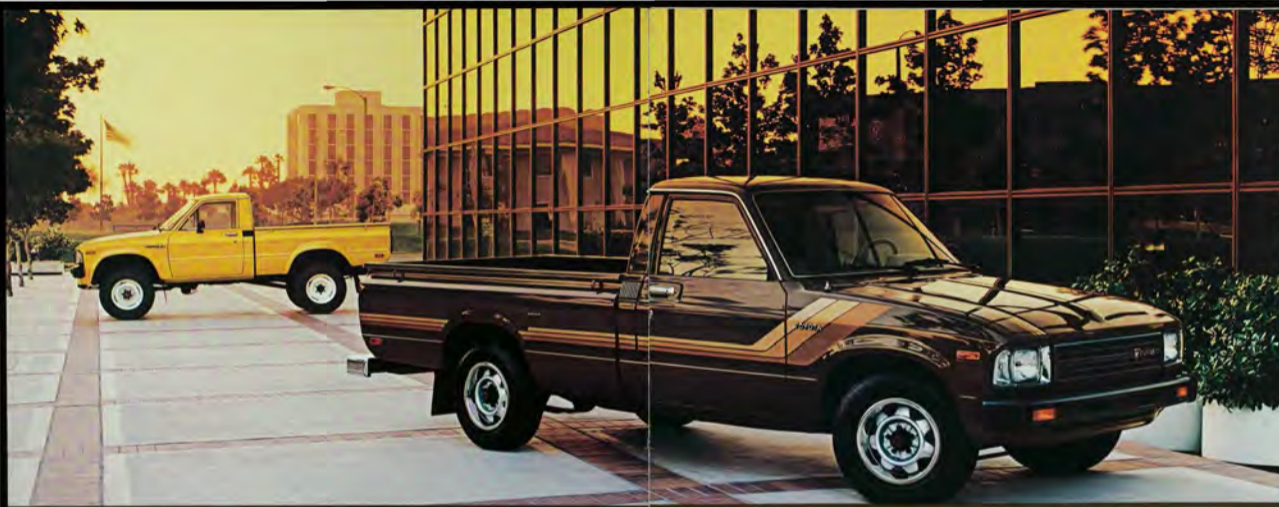




OH
WHAT
A
FEELING
TOYOTA

1982 TRUCKS
BY TOYOTA



Tough, dependable trucks for work and play

1982 TOYOTA TRUCKS

Toyota Trucks are dependable. They're built to take on tough hauls, full loads, and heavy use. And when the chores are done, they become sporty, fun transportation.

All of Toyota's tough gasoline-powered trucks share the same muscular 24 liter 4-cylinder SOHC powerplant. It provides the torque and horsepower to haul maximum recommended loads with ease while squeezing extra miles from every gallon of fuel.*

These trucks are built to be a pleasure to drive. They're excitingly styled too, with new rectangular headlights: the kind of trucks that owners are quick to brag about.

The Standard Bed Truck is the economical choice for hauling and deliveries. Deluxe Trucks are a step up in trim and convenience. They can earn their keep too, but they're also sporty, thrifty, daily transportation. The SR5 Sport Trucks are show-stoppers. They come dressed up in colors and stripes enhanced by aggressive blackout trim. The SR5 cabs feature full instrumentation, bucket seats and wall-to-wall

carpet for an added touch of class.

Some people think the most sensational Toyota Trucks of all are the 4-Wheel Drive models. When the road stops, they have what it takes to keep right on going. And when the weather turns mean, 4-wheel drive helps you push on when other vehicles are stopped. Four-Wheel Drive SR5 Sport Trucks are full-dress 4x4s.

If you have special needs, Toyota makes some special trucks just for you. The 34 Ton Truck is built extra-tough for heavier payloads, up to 1800 pounds including passengers, equipment, and cargo. The unfinished Camper Cab Chassis is designed to accept custom RV and motorhome bodies. The unfinished Commercial Cab Chassis is ready for your special-purpose body.

For payload or playload, the 1982 Toyotas are the total economy line.



*See EPA mileage estimation on your Toyota dealer. Always use proper operation. New features may be added.



SR5s rule the road
in truck styling, comfort, and toughness

TOYOTA SR5 SPORT TRUCKS

The SR5s are very special trucks... Sport Trucks, with the pep and feel of a sporty car. But don't let the sportiness fool you. They'll haul a 1400 lb. payload (including occupants, equipment and cargo) with ease and economy.

Toyota gives the SR5s the works. Sleek sport striping. New rectangular halogen headlights. Tinted glass all around with a special tinted upper band on the windshield to knock down glare. An AM/FM/MPX stereo radio. Steel-belted radial tires mounted on styled steel wheels with trim rings. A standard 5-speed overdrive transmission that's a real engine-and-gas saver.*

There's the option of an innovative 4-speed automatic overdrive transmission in the SR5 Long Bed Sport Truck which reduces rpm for less engine wear and greater fuel economy. A Soft-Ride rear suspension that stillens progressively as you add cargo gives you a car-like ride under all load conditions. Check out the optional Black Package shown here on the SR5 Sport Truck: hi-gloss black paint, black trim, and black interior. That's one beautiful truck.

When it comes to serious trucking,

the SR5s are all business, with a rugged steel bed, closely-spaced cargo tie-down hooks and a one-touch tailgate for easy opening and closing.

Take a look at the long list of options available for the SR5s. Cruise Control** high-efficiency air conditioning, an electronic AM/FM/MPX stereo receiver, power steering, a window package with side vent windows and sliding rear window and a two-tone paint option. For the final touch, there's a moonroof that opens the cab up to the sky.

The 1982 Toyota SR5s are tough, smart, and all around sporty values. Isn't that your kind of truck?



*See EPA mileage statement on specifications page.
**5-speed overdrive transmission only.
Shown with optional equipment. See Features chart for details.



The SR5 interior

Inside the SR5, car-like comforts abound. Low-back bucket seats with adjustable headrests, fully trimmed doors with a driver's side map pocket and cut pile wall-to-wall carpet are all standard on the SR5. Those are just for starters. There's a power-boosted Flo-thru ventilation system that circu-

lates fresh air through the cab even when the windows are closed against the elements. An AM/FM/MPX stereo radio is standard, as is the full instrumentation including tachometer, oil pressure and voltmeter gauges. For durability, eye-catching styling and the room and comfort you need on the job

or on the town, the 1982 Toyota SR5 Sport Truck interiors are the class act.





Toyota Deluxe Trucks

If you're looking for sharp styling, lots of comfort, and some real muscle in one easy-on-the-gas* truck, a Toyota Standard Bed or Long Bed Deluxe Truck is just the ticket for you. The 2.4 liter SOHC engine is a hi-revving workhorse. You can load up to a full 1400 lb. payload (including occupants, extra gear,

and cargo). Inside are car-like comforts: out back, a husky steel bed. Optional power steering that makes maneuvering in tight spots easy is available. So is an AM/FM/MPX stereo radio, air conditioning, and on the Long Bed, Toyota's 4-speed automatic overdrive transmission. Want a lot of truck for

your money? Get the one that feels like a car and works like a truck. Toyota Deluxe.



*See EPA mileage statement on specifications page. Shown with optional equipment. See Features chart for details.



Toyota tough trucks

Toyota's workhorses are built to earn their keep. From the new rectangular headlights for contemporary good looks to the one-touch tailgate for easier loading and unloading, these Toyota Trucks are designed to look as good as they haul. Best of all, they do it with no-nonsense economy.

But tough doesn't mean rough. These Standard Bed Trucks and Long Bed Deluxe Trucks have the high quality finish and car-like comforts you expect from Toyota. There's transistorized ignition for lower maintenance and simpler tuneups, torsion bar front suspension for a smoother ride, and

power-assisted front disc/rear drum brakes.

If the payload is the payoff for you, these practical and affordable Toyotas are your trucks.



Shown with optional equipment. See Features chart for details.

TRUCK FEATURES & OPTIONS

A rugged, proven 2.4 liter SOHC engine is standard in all gasoline-powered Toyota Trucks. It puts out a good, honest 100 horsepower* at 4800 rpm and an impressive 129 ft.-lbs of torque at 2800 rpm... that's pulling power when you need it. At the heart of the engine is a tough five-main-bearing crankshaft for smoother running. A fully transistorized electronic ignition system provides a consistent, hot spark and is a big improvement over mechanical ignition systems for reliability and reduced maintenance. Breaker points and condenser are eliminated and the entire system is far less vulnerable to water-caused failure.

You can match up the potent truck powerplant to a choice of efficient transmissions, depending on your model selection. The 5-speed overdrive transmission is a gas* and engine saver because it lets you cruise at highway speeds in the efficient overdrive fifth gear. The optional 4-speed automatic overdrive transmission gives you the convenience of an automatic with the gas-saving advantages of overdrive. Toyota was the first to put this kind of transmission in a small truck.

For a smooth ride, crisp handling, and stability with a maximum load, a torsion bar front suspension is used instead of coil springs. Double-acting shock absorbers all around control wheel and suspension movement. Leaf springs at the rear give progressively stiffer

springing as loads increase.

For dependable braking power, power-assisted front disc and rear drum brakes are backed by the security of a tandem master cylinder and dual diagonal brake system.

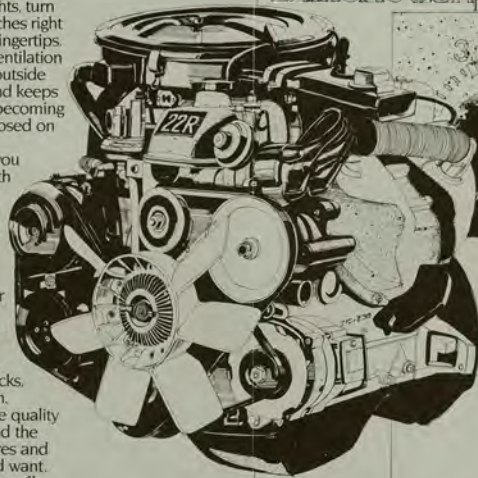
Steering column-mounted controls put the parking and driving lights, turn signals, and wiper/washer switches right where you want them, at your fingertips.

A power-assisted Flo-thru ventilation system lets you bring cooling outside air in on warm summer days and keeps warm air from the heater from becoming stale when the windows are closed on chilly winter days.

The one-touch tailgate lets you open and close the tailgate with a single center latch.

Depending on the model you choose, you can add a host of comfort and convenience options to your Toyota Truck. Air conditioning is one of the most popular, along with power steering, AM/FM/MPX stereo radio, a tilt steering wheel, and a window package with side vents and sliding rear window. For 2x4 and 4x4 SR5 Sport Trucks, there's even a moonroof option.

That's just a quick look at the quality built into every Toyota Truck and the broad range of standard features and options truck owners need and want. Whatever you need in a truck, you'll find it in a tough 1982 Toyota.



2.4 liter 100 bhp 4800 rpm



COLUMN-MOUNTED HEADLIGHT CONTROLS



INSIDE HOOD RELEASE



TUNGSTEN HALOGEN HEADLIGHTS



TRANSISTORIZED DISTRIBUTOR

SR5 Sport Truck standard features include steel-belted radial tires, AM/FM/MPX stereo radio, and 5-speed overdrive transmission.



STEEL-BELTED RADIAL TIRE WITH STEEL BOND AND 4-PLY REINFORCED BRIDGE TREAD



4-SPEED OVERDRIVE TRANSMISSION



FRONT DISC BRAKES



AM/FM/MPX STEREO RADIO

Toyota's 2.4 liter 4-cylinder SOHC engine is muscular, reliable and economical. It produces 100 horsepower* at 4800 rpm and a hefty 129 ft.-lbs of torque at 2800 rpm. Two-barrel progressive carburetion provides high fuel efficiency with plenty of reserve power when needed.



CRUISE CONTROL



ELECTRONIC AM/FM/MPX STEREO RECEIVER

Choose from a broad array of comfort, convenience and appearance options from air conditioning to chrome step bumper.



WESTERN-STYLE OUTSIDE MIRRORS



POWER STEERING



CHROME REAR STEP BUMPER



MOONROOF



TILT STEERING WHEEL



WINDOW PACKAGE

*96 in California

**See EPA mileage statement on specifications page



Toyota 4-Wheel Drive SR5 Sport Trucks

Want to go where adventure beckons? Or be able to keep on going when the weather turns mean? Do it in style with a 4x4 SR5 Sport Truck in optional two-tone paint with chrome package like the one shown here.

The Standard Bed and Long Bed 4x4 SR5 Sport Trucks are two of the

toughest Toyota Trucks of all, descendants of the legendary Land Cruiser.

On pavement, their 4-wheel drive system with free-wheeling hubs lets them cruise economically.* When the going gets tough, the tough get going with 4-wheel drive power through the 2-speed transfer case and versatile

5-speed overdrive transmission.

Toyota 4x4 SR5 Sport Truck performance can get you into the rough country, and back out again.



*See EPA mileage statement on specifications page. Shown with optional equipment. See Features chart for details.

Depending on the 4x4 model you choose, standard equipment includes full instrumentation with tachometer, and tungsten halogen headlights.



TACHOMETER

TUNGSTEN HALOGEN HEADLIGHTS

Aggressive H78x15 mud and snow tires are easy-riding on the highway, all business when they get off-road.



STEEL SKID PLATE PROTECTOR

FRONT TOW HOOK

MUD & SNOW TIRES

All Toyota 4x4 Trucks are equipped with steel skid plates under the transfer case and gas tank, and handy forged-steel front tow hook.



Options for the 4x4s include chrome package, raised-white-letter radial tires, black tube rear bumper and many more.

CHROME PACKAGE

RAISED-WHITE-LETTER RADIAL TIRES

BLACK TUBE REAR BUMPER

CHROME SPORDED WHEELS



Toyota 4-Wheel Drive Deluxe Trucks

For 4x4 trucks that are ready to go wherever you want to go, Toyota's 4x4 Standard and Long Bed Deluxe Trucks are your economical choice. You can make them as fancy as you like with air conditioning, AM/FM/MPX stereo radio and other options.

You've got steel skid plates under

the transfer case and gas tank, a forged-steel front tow hook, free-wheeling/locking front hubs, and power-assisted front disc and rear drum brakes.

Toyota's Deluxe 4x4s are at their best when you head for country only a real 4x4 would dare take on.

That's where you can give the optional

5-speed overdrive transmission* and 2-speed transfer case a real workout. That's 4-wheeling, Toyota style.



*Long Bed only.
Shown with optional equipment. See Features chart for details.
Truck shown with custom camper shell modification. Similar shells available at many Toyota dealers.

A water sedimentor and fuel filter protect the engine by trapping moisture and impurities in diesel fuel.



WATER SEDIMENTOR & FUEL FILTER

GLOW PLUG FILTER

GLOW PLUG INDICATOR LIGHTS



A dual-battery electrical system powers the heavy-duty starter motor.

DUAL BATTERY STARTING SYSTEM



5-SPEED OVERDRIVE TRANSMISSION

Five-speed overdrive transmission reduces engine rpm for increased fuel economy.



Toyota Diesel Truck

Here's the Toyota-tough, diesel-dependable truck you've been waiting for. It has a husky 22 liter powerplant coupled to Toyota's 5-speed overdrive transmission for smoother, quieter operation. It has a five-main-bearing crankshaft for added durability. Because high-compression diesels require more

starting power, the Toyota Diesel has a heavy-duty starter motor with a dual-battery electrical system. Like the big diesels, this half-tonner has a water sedimentor and fuel filter to trap moisture and impurities in the fuel, and a high-altitude compensator to deliver the correct amount of fuel

to the combustion chambers no matter what the elevation. For diesel fuel economy* with dependability, here's your truck.



*See EPA mileage statement on specifications page. Shown with optional equipment. See features chart for details. Check specifications page for actual payload capacities. Diesel engine not available in California.



*Toyota 3/4 Ton and
Commercial & Camper Cab/Chassis*

You can have small-truck economy and big-truck payload in Toyota's 3/4 Ton Truck. With heavy-duty rear springs, rear axle assembly and special heavy-gauge steel floor in the bed, this truck gives you a full 1800 lb. payload (including occupants, extra gear, and cargo)—plus Toyota style and comfort.

Toyota's unfinished Commercial and Camper Cab/Chassis models are fully equipped just waiting for your special-purpose custom body. One Cab/Chassis model is designed for commercial applications. The other is for pleasure: with a motorhome body on it, it's ready to take to the road.



Shown with optional equipment. See Features chart for details. Cargo pictured is for demonstration purposes only. Check specifications page for actual payload capacities. Cab/Chassis units shown with typical custom body modifications. Similar bodies may be available through many Toyota dealers.

TRUCK FEATURES

	SR5 Long Bed Stand. Bed Sport	Long Bed Stand. Bed Deluxe	Standard Bed	4WD SR5 Long Bed Stand. Bed Sport	4WD Long Bed Stand. Bed Deluxe	Long Bed Deluxe Diesel	3/4 Ton	Camper Cab Chassis	Comm. Cab Chassis
S—Standard O—Optional —Not Available									
MECHANICAL									
2.4 liter 4-cylinder SOHC engine	S	S	S	S	S	S	S	S	S
2.2 liter 4-cylinder SOHC diesel engine	—	—	—	—	—	—	—	—	—
Fully transistorized ignition	S	S	S	S	S	S	S	S	S
4-speed overdrive transmission	S	S	S	S	S	S	S	S	S
4-speed synchromesh transmission	—	—	—	—	—	—	—	—	—
4-speed automatic overdrive transmission	O*	O*	—	—	—	—	—	—	—
2-speed transfer case	—	—	—	S	S	—	—	—	—
Steel skid plates under transfer case and fuel tank	—	—	—	S	S	—	—	—	—
Power-assisted brakes (front disc, rear drum)	S	S	S	S	S	S	S	S	S
Steel-belted radial tires	S	S	—	O*	—	—	—	—	—
HR78X15 mid and tow tires	—	—	—	S	S	—	—	—	—
205-70SR14 RWL tires	O*	—	—	—	—	—	—	—	—
EXTERIOR									
White spoke wheels	—	—	—	S	—	—	—	—	—
Chrome spoke wheels	—	—	—	O*	—	—	—	—	—
Chrome package including chrome wheels, HR78X15 RWL radial tires	—	—	—	—	—	—	—	—	—
Tree wheeling/locking front hubs	—	—	—	S	S	—	—	—	—
Chrome front bumper	—	S	—	—	S	—	—	S	—
Jungtun halogen headlights	S	—	—	S	—	—	—	—	—
Sport styled outside mirror	S*	S	S	S*	S	S	S	S	S
Windrow package (vents and sliding rear window)	O	O	—	O	O	O	O	O	O
Tackline paint	O	—	—	O	—	—	—	—	—
Moonoof	O	—	—	O	—	—	—	—	—
One-touch tailgate release	S	S	S	S	S	S	S	S	S
INTERIOR									
Tachometer	S	—	—	S	—	—	—	—	—
Oil pressure and voltmeter gauges	S	—	—	S	—	—	—	—	—
Power steering	O	O	—	O	O	—	—	—	—
Tilt steering wheel	O	—	—	O	O	—	—	—	—
Crutch Control	O†	—	—	—	—	—	—	—	—
Urethane covers/ 3-spoke padded steering wheel	S	—	—	S	—	—	—	—	—
Air conditioning	O	O	O	O	O	O	O	O	O
Steering column-mounted controls with intermittent wiper/washer	—	S	—	—	S	O*	—	O*	—
Steering column-mounted controls with mist cycle wiper/washer	—	S	S	—	S	S	S	S	S
Low-back bucket seats with center console	S	—	—	S	—	—	S	—	S
Tilt-forward bench seat with center panel tray	—	S	S	—	S	S	S	—	S
Cloth seat trim	O	—	—	—	—	—	—	—	—
Super Soft vinyl seat trims with full door trim and carpeted kick panel	S	—	—	S	—	—	—	—	—
Vinyl seat trim	—	S	S	—	S	S	S	S	S
Tinted glass with shaded windshield band	S	—	—	S	—	—	—	—	—
Wall-to-wall cut pile carpeting	S	—	—	—	—	—	—	—	—
AM/FM radio	—	O	O	—	O	O	O	O	O
AM/FM/MPX 2-speaker stereo radio	S	O	—	S	O	O	—	—	—
Electronic AM/FM/MPX 2-speaker stereo receiver	O	—	—	O	—	—	—	—	—

*4WD Long Bed Deluxe only †SR5 Long Bed Sport only ‡Long Bed Deluxe only †With rear load-sensing proportioning valve ‡Part of optional chrome package †Package includes power steering †Raised-letter tires not available with black exterior color models †Dual mirrors available on selected SR5 †With 3-speed transmission †With tilt steering wheel option †Without center console

SPECIFICATIONS

	2WD GAS			2WD DIESEL			4WD		
ENGINE TYPE	4-cylinder in-line SOHC			4-cylinder in-line SOHC diesel			4-cylinder in-line SOHC		
DISPLACEMENT	2.4 liters (127.76 cc)			2.2 liters (121.88 cc)			2.4 liters (127.76 cc)		
HORSEPOWER (SAE NET) (TORQUE (SAE NET))	100 @ 4800 rpm (166 @ 96 @ 4800 rpm (Cal. and all C-C)) 129 ft.-lbs. @ 2500 rpm			82 @ 4200 rpm 91 ft.-lbs. @ 2500 rpm			100 @ 4800 rpm (166 @ 96 @ 4800 rpm (Cal. and all C-C)) 129 ft.-lbs. @ 2500 rpm		
BODY/FRAME CONSTRUCTION	Welded steel cab						Welded steel cab		
SUSPENSION FRONT	Torsion bar with stabilizer bar and double-acting shock absorbers						Leaf springs with double-acting shock absorbers		
SUSPENSION REAR	Leaf springs with double-acting shock absorbers (plus heavy-duty axle and rear springs on 3/4 Ton and Cab Chassis)						Leaf springs with double-acting shock absorbers		
STEERING TYPE	Recirculating ball						Recirculating ball		
TURNING DIAMETER	34 ft. Standard Bed, 36.2 ft. Long Bed						34.7 ft. Standard Bed, 41.4 ft. Long Bed		
BRAKES	Power-assisted (front disc, rear drum) with rear load-sensing proportioning valve on 3/4 Ton and Cab Chassis						Power-assisted (front disc, rear drum) with rear load-sensing proportioning valve		
EXTERIOR DIMENSIONS (inches)									
Wheelbase	110.2	101.8	110.2	101.8	110.6	102.2	110.2	110.2	110.2
Tread width (front)	53.0	53.0	53.0	53.0	53.0	53.9	53.0	53.0	53.0
Tread width (rear)	53.1	53.1	53.1	53.1	53.1	53.1	53.1	53.1	53.1
Overall length	186.2	171.1	186.2	171.1	186.2	171.1	186.2	186.2	N.A.
Overall width	63.4	63.4	63.4	63.4	66.5	66.5	63.4	63.4	63.4
Overall height	60.4	60.4	60.8	60.8	65.9	65.9	60.6	60.6	61.0*
Bed length	87.4	72.2	87.4	72.2	87.4	72.2	87.4	87.4	N.A.
INTERIOR DIMENSIONS (inches)									
Head room (without moonroof)	38.0	38.0	38.0	38.0	38.0	38.0	38.0	38.0	38.0
Leg room	40.4	40.4	40.4	40.4	40.4	40.4	40.4	40.4	40.4
AXLE RATIOS									
Front	—	—	—	4.41:1†	4.11:1†	4.11:1†	—	—	—
Rear	4.727:1†	3.727:1†	3.727:1†	4.727:1†	4.11:1†	4.11:1†	3.909:1†	3.727:1†	4.11:1†
2-SPEED TRANSFER CASE									
Gear ratios	—	—	—	—	High 1.00 Low 2.277	High 1.00 Low 2.277	—	—	—
GROUND CLEARANCE									
Angle of approach	31.5°	31.5°	32.5°	32.5°	41.5°	41.5°	32.5°	32.5°	34.5°
Angle of departure	15.5°	15.5°	18.0°	18.0°	29.5°	29.5°	18.0°	18.0°	N.A.
Differential system to ground	6.9"	6.9"	7.3"	7.1"	7.9"	7.9"	7.1"	7.1"	7.5"
Minimum running ground clearance	6.7"	6.7"	7.9"	7.9"	11.6"	11.7"	7.5"	7.5"	8.3"
CAPACITIES									
Gross vehicle weight (lbs.)	4230	4230	4230	4230	4390	4390	4230	4630	4630
Payload (lbs.)*	1400	1400	1400	1400	1400	1400	1400	1400	N.A.
Fuel tank capacity (gallons)	16.0	13.5	16.0	13.5	16.0	13.5	16.0	16.0	16.0
TIRES									
Type	Steel-belted radial			Std. Bed Dlx. Standard Bed			Bias-ply		
Size	Blackwall ER78x14	Bias-ply white/white E78x14	Bias-ply blackwall E78x14	Bias-ply edge/wall E78x14	Bias-ply blackwall H78x15	Bias-ply blackwall H78x15	Bias-ply white/wall E78x14	Bias-ply white/wall E78x14	Bias-ply white/wall E78x14
EXTERIOR COLORS*	White Brown Metallic	Gloss Black Black	Red Blue Beige	Red Blue Beige	Dark Gray Metallic Dark Blue Metallic Blue-White Two-Tone	Dark Gray Metallic Dark Blue Metallic Blue-White Two-Tone	Dark Gray Metallic Dark Blue Metallic Blue-White Two-Tone	Dark Gray Metallic Dark Blue Metallic Blue-White Two-Tone	Dark Gray Metallic Dark Blue Metallic Blue-White Two-Tone

Toyota 4WD Trucks are designed to meet off-road driving requirements. Abusive use may result in bodily harm or damage. We encourage responsible operation to protect you, your vehicle and the environment.
*Toyota has made a special effort to make our seat belts comfortable, easy to use, and convenient. We ask you to please drive carefully, and we urge you to use your seat belts every time you drive.
†EPA Statement: Consult your Toyota dealer for individual model EPA mileage figures.
*Remember: Compare this estimate to the EPA Estimated MPG of other trucks. You may get different mileage depending on how fast you drive, weather conditions and trip length.
†Specifications and equipment are based on the available information at time of printing and are subject to change without notice. †Cover vehicle and all others shown with optional equipment.
See features chart for details. For information on additional options and accessories, contact your Toyota dealer.
*Cab only †4-speed ‡3-speed †Including occupants †Blackwall-Commercial only †Some colors not available on all models. †Optional N.A.—Not applicable

Dependable trucks,
parts & service

Tooyas are designed and built to give you dependable motoring year after year, mile after mile.

And to help keep your Toyota performing at peak efficiency, more than one thousand Toyota dealers throughout the U.S. give you added reassurance with quality parts and service.

Toyota dealer service technicians—many of whom are specially certified by the National Institute for Automotive Service Excellence (NIASE)—have at their command a sophisticated nationwide computerized parts supply system that makes sure Genuine Toyota Parts are on the shelf at your nearby Toyota

dealer, or are readily available from one of Toyota's regional parts warehouses located from coast to coast.

Dependability—in our cars and trucks, parts and service—is a never-ending goal at Toyota. Millions of satisfied Toyota owners know it. And the 1982 Toyota Trucks show it.