

ALL-NEW  
2008

TAURUS







fordvehicles.com



Taurus Limited in Dark Ink Blue Metallic with optional equipment

1  
Taurus

### **SAFEST**

5-Star crash test ratings from NHTSA  
"Top Safety Pick" from IIHS<sup>1</sup>

### **ROOMIEST**

Best-in-class interior space<sup>2</sup>  
Best-in-class seat comfort<sup>3</sup>

### **HANDIEST**

Interior versatility  
Biggest trunk

### **LIVELIEST**

263-hp V6  
Ward's "10 Best Engines"<sup>4</sup>

AMERICA'S  
**IDEAL**  
FAMILY CAR

<sup>1</sup>With optional electronic stability control. Based on NHTSA 5-Star frontal and side crash test ratings and IIHS "Top Safety Pick."  
<sup>2</sup>Standard 5-passenger Large Car class. <sup>3</sup>2006 Global Quality Research System (at 3 months in service). <sup>4</sup>WardsAuto.com, January 2007.

America's ideal family car: the all-new **Taurus.**

Ford Taurus has built a reputation for being the best. When it was originally introduced, Taurus forever changed the way cars look, feel and drive. Today's Taurus is better than ever: more distinctive and more confident. The bold chrome grille catches the eye, while the award-winning 263-hp V6 stirs the soul. Safe, spacious, smart and so versatile, Taurus is America's best new car for families on the go.





fordvehicles.com

# Attractive.

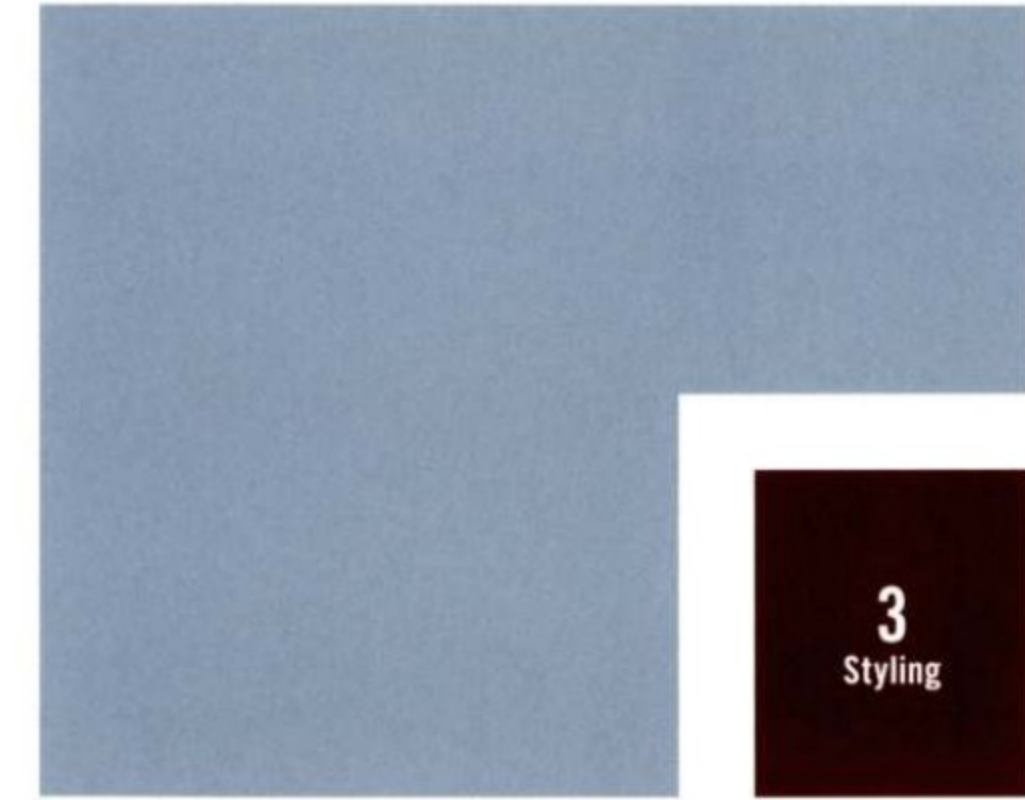
America's family car

Taurus doesn't go unnoticed. The signature tri-bar chrome grille is a focal point, boldly bridging the sculpted hood and shapely front fascia. Fog lamps are surrounded by chrome, a striking chrome side vent dresses up each front fender, and wraparound halogen headlamps have a jewel-like look.



Taurus Limited in Merlot Metallic with optional equipment

Detailed taillamps bookend the strong horizontal design theme in back, and dual chrome exhaust tips stand out. Taurus Limited adds to the sophistication with a chrome license-plate brow. Limited models also feature chrome-accented door handles and mirror caps, plus 18" bright-aluminum wheels; chrome-clad wheels are optional for a more pronounced shine. Ford Taurus reflects exceptionally well on you and yours.







fordvehicles.com

- A** **6 STANDARD AIRBAGS** including: 2 dual-stage front airbags; 2 front-seat side airbags; and 2 side-curtain airbags, which run front to back and are part of the Safety Canopy™ System that also features a class-exclusive rollover sensor.
- B** **ULTRA-RIGID CHASSIS** is not only the nucleus of the solid, 5-Star-rated structure, it was crash-modeled on a Cray® supercomputer to pinpoint energy-absorbing properties, minimize passenger compartment intrusion and maintain structural integrity. Cray is a registered trademark of Cray, Inc.
- C** **SPACE (Side Protection And Cabin Enhancement) ARCHITECTURE™** is a class exclusive comprised of advanced structural elements, now with pressure crash sensors in the doors for faster airbag deployment.

- D** **TRIPOD DESIGN** in the front structure channels crash forces upward and downward – away from passengers – into a high-strength steel “ring of protection.”
- E** **LASER-WELDED SIDE PILLARS** help redirect crash forces underneath the seats. To help manage energy in side collisions, laser-welded steel sheets of varying thicknesses are stamped right into the structure.
- F** **PERSONAL SAFETY SYSTEM®** (with Front-Passenger Sensing System) enhances collision protection for the driver and front passenger through a network of sensors controlling deployment of the dual-stage front airbags.



**ADDITIONAL SAFETY AND SECURITY FEATURES STANDARD ON EVERY TAURUS:** Class-exclusive keyless-entry keypad unlocks at a touch • Auto-dimming rearview mirror cuts glare • Tire Pressure Monitoring System alerts for underinflation • ABS and Traction Control work at all speeds

**FOR TAURUS LIMITED, THESE TOO ARE STANDARD:** Anti-theft perimeter alarm helps protect valuables • Heated sideview mirrors come with memory settings • Headlamps are automatic on/off and wiper-activated for enhanced visibility • Security approach lamps (in exterior mirrors) light up via the key fob, door handle or keypad

5 Stars in every crash test category:



Driver frontal crash rating



Passenger frontal crash rating



Front-seat side crash rating



Rear-seat side crash rating



5  
Safety &  
Security

RATED AMERICA'S  
**SAFEST**  
FULL-SIZE CAR

**Safest.**  
America's family car

Taurus provides unmatched, class-leading protection. Its crash safety rates the full 5 Stars from the National Highway Traffic Safety Administration (NHTSA). Equipped with optional electronic stability control, Taurus also is an Insurance Institute for Highway Safety (IIHS) “Top Safety Pick.”

It's the only vehicle in its class to achieve top crash test results across the board from NHTSA and earn the highest ratings in all 3 IIHS categories. Rigorous IIHS criteria include a 40-mph frontal offset crash test assessing structural design, a side-impact crash test simulating what it's like to be struck by an SUV or pickup, and a rear crash-protection test focusing on whiplash prevention. Taurus = Family Insurance Plan.





[fordvehicles.com](http://fordvehicles.com)

# Commanding.

America's family car

Take hold of the leather-wrapped wheel of Taurus and take charge. An experience enhanced by class-exclusive Command Seating, which sits you comfortably upright and tall, provides SUV-like panoramic visibility, and allows for effortless entry and exit.



Taurus Limited with optional equipment

**CLASS-EXCLUSIVE  
COMMAND  
SEATING™**

Bright accents abound, from the door handles and instrument panel gauges to the console controls and shifter. The look is rich, with a feeling of confidence: audio buttons on the steering wheel, and available power-adjustable pedals, extend your command. Take that family trip in style – and in certainty – from San Diego to Savannah with the optional voice-activated, DVD-based Navigation System as co-pilot.



# Roomiest. America's family car

Welcome to the most sizable family-friendly interior in the class: a full 129.2 cu. ft. to be exact. Within this wealth of room, guests can bask in class-best rear passenger volume. Up front, a genuine wood-accented steering wheel and shift knob are available to play up Taurus luxury.



**BEST-IN-CLASS  
INTERIOR  
SPACE & SEAT  
COMFORT**

[fordvehicles.com](http://fordvehicles.com)

Emphasizing proper thigh, back and head support for short or long hauls, the ergonomically designed seats rank #1 in the class for comfort. A big thanks goes to the available plush, perforated-leather trim – finely adorned with color-contrasted stitching. And Taurus Limited ups the ante, treating you to an 8-way power driver seat and a 4-way power passenger seat; front seats can be heated in either of 2 settings. Definitely desirable.



Taurus Limited in Camel perforated-leather trim with optional equipment



**9**  
Space & Quiet

**ADJUSTABLE REAR AIR VENTS** are furnished for backseat travelers – who also have the advantage of being able to slide their feet under the front seat for added comfort.

**DUAL-ZONE ELECTRONIC AUTOMATIC TEMPERATURE CONTROL** is standard on Taurus Limited, allowing you and your front passenger to choose precise climate settings independently. Climate control functions are whisper-like, making for a **TRULY QUIET INTERIOR**. Hydraulic engine mounts, aerodynamic sideview mirrors, a specially tuned suspension, and advanced, patented sound-deadening materials guarantee the Articulation Index – measuring the clarity of conversing inside of Taurus – is nothing less than superb.





# Handiest.

America's family car

No other car can handle it all like Taurus, which is always happy to lend a helping hand. While family savors the comfort of the cabin, keep cargo in the trunk – by far the biggest of any sedan in North America. Measuring a whopping 21.2 cu. ft., it packs a load with room to spare.



A PLACE FOR  
**EVERYONE**  
AND EVERYTHING

[fordvehicles.com](http://fordvehicles.com)

Lower either or both sections of the 60/40 split-folding rear seat, and then drop the fold-flat front-passenger seat. You've just equipped yourself with the weather-protected ability to haul objects 9' in length. Stow smaller-scale items within each door's built-in storage pocket or the locking glove compartment. Taurus versatility extends to the 8 beverage holders, three 12-volt power points, and a nifty foldaway rear armrest.



Taurus Limited in Camel perforated-leather trim with optional equipment



ITEMS UP TO 9' LONG are a cinch to transport with the handy fold-flat front-passenger seat and split-folding rear seat.



On all models, the IN-DASH STORAGE space conveniently pops open for essentials. TWO-TIERED STORAGE is integrated within the center console on Taurus Limited. Open the armrest cover to access the upper tier; lift the cover and upper tier to get to the oversized lower bin. The INTEGRATED KEY eliminates a separate fob.

**11**  
Flexibility



Maximum space for all your gear.

13  
Carryall



BIGGEST  
**TRUNK**  
OF THEM ALL

[fordvehicles.com](http://fordvehicles.com)



Taurus SEL in Light Ice Blue Metallic with optional equipment





## ALL-WHEEL DEFENSE



ALL-WHEEL DRIVE (AWD) is optional on all models for enhanced safety: increased control and superior performance. Taurus AWD utilizes an on-demand electronic center coupler to deliver the ideal amount of torque to all 4 wheels independently. So wheel slippage is anticipated – and virtually eliminated – before it can occur.

ADVANCETRAC® ELECTRONIC STABILITY CONTROL manages engine torque and applies braking to help keep Taurus tracking safely on the intended path. Studies show this option can be a true lifesaver.

28 MPG  
HIGHWAY

263 HP

AND CRISP THROTTLE RESPONSE TO MATCH:  
"I'VE NEVER SEEN A TACH NEEDLE  
JUMP FROM 1500 RPM TO 5000 RPM  
QUITE LIKE THIS."

— SENIOR EDITOR TOM MURPHY  
WARDSAUTO.COM



10 WARD'S  
Best  
Engines

AWARD WINNER in the 13th annual *Ward's* 10 Best Engines<sup>1</sup> competition: "Along with inspired mid-range snap, the Duratec 35 3.5L DOHC V6 fronts what we believe to be class-leading refinement." And it posts some impressive EPA-estimated fuel economy figures: 18 MPG CITY/28 HWY for front-wheel drive; 17 MPG CITY/24 HWY for All-Wheel Drive. Just as noteworthy is the astounding 574-MILE RANGE you can achieve on a full tank of gas.

<sup>1</sup>WardsAuto.com, January 2007.

# Confident.

America's family car

On-demand acceleration gives you the strength to make things happen. Ford's most powerful V6 ever is one of the cleanest-running, which marks another first in Ford history: The V6 achieves PZEV (Partial Zero Emissions Vehicle) in certain states,<sup>2</sup> so it's as eco-responsible as a hybrid vehicle.

<sup>2</sup>CA, MA, ME, NY and VT.



15  
Performance

[fordvehicles.com](http://fordvehicles.com)

Taurus Limited in Dark Ink Blue Metallic with optional equipment

The die-cast, aluminum-block engine produces a robust 263 horsepower and 249 lb.-ft. of torque; employs intake variable cam timing (iVCT) for optimal horsepower per liter; attains peak performance on regular unleaded gasoline; and is teamed with a new, class-exclusive standard 6-speed automatic. It delivers impressive fuel economy and ultra-smooth precision shifts. V6 acceleration never felt so good.



“... looks and acts the part...” AUTOBYTEL.COM

17  
Accolades





# Engaging.

America's family car

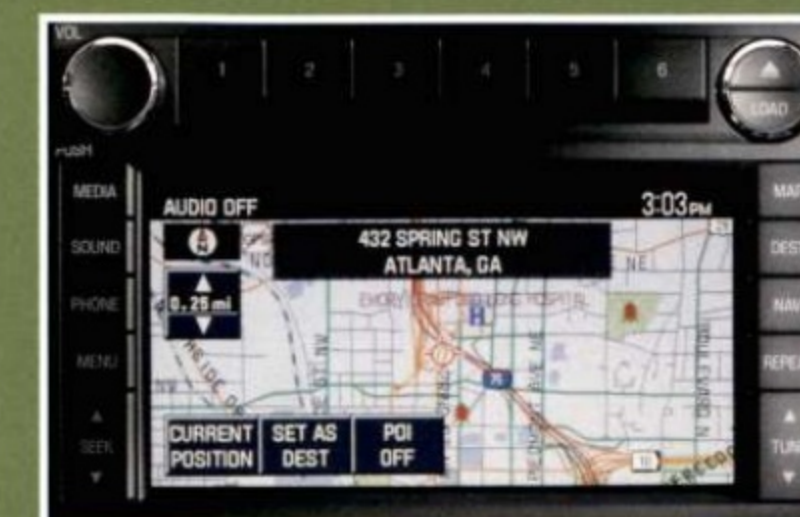
Take the show – and those games – on the road. The next-generation DVD Family Entertainment System is the perfect option. Its flip-down, full-color LCD screen is sized a generous 8". Two infrared wireless headphone sets and an infrared remote control are also included.



Another plus for the DVD Family Entertainment System: Its dual-media function lets those in back remain transfixed with on-screen action, while you and your front seatmate listen to the radio, a CD, or all those portable MP3 tunes – courtesy of the built-in auxiliary audio input jack that's wired directly to the acoustically optimized sound system and standard on every Taurus. It's good to have connections.

19  
Sensory  
Surround

## PLAY UP THE PLEASURE



VOICE-ACTIVATED DVD-BASED NAVIGATION SYSTEM eliminates travel guesswork. The generous 6.5" color LCD monitor clearly displays maps and menus, pinpointing where you are and providing turn-by-turn Route Guidance. More than 20 different functions – many of which can simply be voice prompted – are accessible on this option.

SIRIUS SATELLITE RADIO<sup>1</sup> offers more than 130 channels of crystal-clear, digital-quality sound. This factory-installed option is your passport to an amazing range of music (all of it 100% commercial-free), sports, news, talk and entertainment. SIRIUS coast-to-coast coverage is seamless in the contiguous U.S., and as a subscriber, you'll also receive free online access to all music channels. To top it off, a complimentary 6-month subscription to SIRIUS is included in the option price.



**SIRIUS**  
SATELLITE RADIO  
THE BEST RADIO ON RADIO™

<sup>1</sup>See your Ford Dealer or contact SIRIUS at 1-888-539-7474 for more information.



AUDIOPHILE® SOUND SYSTEM is standard on Taurus Limited for your listening pleasure – with 8 speakers, a 2-channel 90-watt amplifier, subwoofers, speed-compensated volume, and a 6-disc in-dash CD player that's MP3-capable.





fordvehicles.com



Taurus Limited in Dark Ink Blue Metallic and Taurus SEL in Merlot Metallic

# Value.

21  
Taurus



**SEL** *select standard content:*

2-row Safety Canopy™ System with side-curtain airbags • Front-seat side airbags • 4-wheel disc Anti-lock Brake System (ABS) • Traction Control • Tri-bar chrome grille • Fog lamps • Body-color, power sideview mirrors with chrome bezels • Dual chrome exhaust tips • Air conditioning • Auto-dimming rearview mirror • Heat and air conditioning vents in rear of front center floor console for rear-seat passengers • Leather-wrapped steering wheel and shift knob • Message center with compass • Steering wheel-mounted cruise and audio controls • AM/FM stereo with single-CD player and clock • Auxiliary audio input jack • Three 12-volt power points • 6-way power driver seat with manual lumbar adjustment • 2-way power fold-flat front-passenger seat • Rear-seat center armrest with beverage holders • Interior Ash woodgrain-appearance appliques • 17" 8-spoke bright-finish aluminum wheels with P215/60R17 tires • Tire Pressure Monitoring System



**LIMITED** *includes SEL content, plus:*

Anti-theft perimeter alarm • Automatic headlamps with on/off delay and wiper-activated headlamps feature • Chrome-accented, heated sideview mirrors with memory and security approach lamps • Chrome-accented door handles • License plate molding with chrome accents • Analog clock in instrument panel • Dual-zone Electronic Automatic Temperature Control • Outside temperature display • Audiophile® Sound System with AM/FM stereo/6-disc in-dash CD changer with MP3 capability and subwoofer • Heated driver and front-passenger seats • Leather-trimmed seats with contrast stitching • 8-way power driver seat with memory • 4-way power fold-flat front-passenger seat with manual lumbar adjustment • Koa woodgrain appearance; door-trim appliques (switch bezels) • Two-tier clamshell front center floor console • Adjustable rear-seat head restraints • Rear-seat center armrest with beverage holders and storage • 18" 8-spoke bright-aluminum wheels with P225/55R18 tires



AUTO-DIMMING MIRROR WITH HOMELINK®

MOONROOF DEFLECTOR

SIDE-WINDOW DEFLECTORS



## Enhance your Taurus experience with Genuine Ford Accessories.



VEHICLE SECURITY SYSTEM



AUTO-DIMMING MIRROR



TRUNK CARGO ORGANIZERS



SMOKER'S PACK WITH ASHCUP/COIN HOLDERS



ANTI-THEFT WHEEL LOCKS



CARPETED FLOOR MATS

Engineered by Ford for excellent fit and long-wearing durability, Genuine Ford Accessories offer you serious style and quality. When installed by your Ford Dealer at the time of purchase or lease, they're backed by a 3-year/36,000-mile limited warranty.<sup>1</sup> And now, Ford's vehicle Accessorizer puts personalization in the fast lane. This exciting new online tool lets you see how Genuine Ford Accessories will look on your Taurus. Take it for a test drive at [fordaccessoriesstore.com](http://fordaccessoriesstore.com).

<sup>1</sup>12-month/12,000-mile limited warranty if Genuine Ford Accessories are not installed by a Ford Dealer or are purchased after initial vehicle sale or lease. See your dealer for details.



# Specifications.

23  
Taurus

## STANDARD FEATURES

### MECHANICAL

3.5L Duratec V6 engine with 263 hp  
6-speed automatic transmission  
4-wheel disc Anti-lock Brake System (ABS)  
Compact spare tire  
Front-wheel drive (FWD)  
Hydraulic power steering  
Traction Control

### SAFETY/SECURITY

Personal Safety System<sup>®</sup> for driver and front passenger – Includes dual-stage front airbags,<sup>2</sup> safety belt pretensioners, safety belt energy-management retractors, safety belt usage sensors, driver-seat position sensor, crash severity sensor, restraint control module and Front-Passenger Sensing System  
2-row Safety Canopy<sup>™</sup> System with side-curtain airbags and rollover sensor  
Battery saver  
Belt-Minder<sup>®</sup> safety belt reminder  
Child-safety rear door locks  
Front-seat side airbags  
Illuminated entry  
LATCH – Lower anchors and tether anchors for child-safety seats  
Remote keyless-entry system with driver door-mounted keypad  
SecuriLock<sup>®</sup> passive anti-theft ignition system  
SPACE (Side Protection And Cabin Enhancement) Architecture<sup>™</sup>  
Tire Pressure Monitoring System

### SEATING

60/40 split fold-down rear seat  
Command Seating<sup>™</sup>  
Front bucket seats, including 6-way power driver seat with manual lumbar adjustment  
Rear-seat center armrest with beverage holders

### INTERIOR

Accessory delay  
Air conditioning  
Auto-dimming rearview mirror  
Auxiliary audio input jack  
Beverage holders – 8  
Floor mats – Front and rear carpeted  
Front center floor console with armrest, beverage holders and storage  
Front overhead console with dome light, map light and sunglasses holder  
Instrumentation – Speedometer, tachometer, temperature gauge and fuel gauge  
Leather-wrapped steering wheel and shift knob  
Message center with compass  
Power door locks and windows with one-touch-up/-down driver-side feature  
Power points – 3  
Power remote trunk release  
Rear-seat reading lights  
Sliding sun visors with illuminated vanity mirrors  
Steering wheel-mounted cruise and audio controls  
Tilt steering column  
Woodgrain-appearance appliques (Ash on SEL; Koa on Limited)

### EXTERIOR

Body-color door handles  
Body-color, power sideview mirrors  
Dual chrome exhaust tips  
Fog lamps with chrome bezels  
Rear-window defroster  
Solar-tinted glass  
Tri-bar chrome grille

<sup>2</sup>Always wear your safety belt and secure children in the rear seat.

Comparisons based on 2007 competitive models (standard 5-passenger Large Car class), publicly available information and Ford certification data at time of printing. Some features discussed may be optional. Vehicles shown may contain optional equipment. Features shown may be offered only in combination with other options or subject to additional ordering requirements or limitations. Dimensions shown may vary due to optional features and/or production variability. Following publication of the catalog, certain changes in standard equipment, options and the like, or product delays may have occurred which would not be included in these pages. Your Ford Dealer is the best source for up-to-date information. Ford Division reserves the right to change product specifications at any time without incurring obligations.

## FEATURES & OPTIONS

### SEL

#### LIMITED

#### MECHANICAL

- All-Wheel Drive (AWD)
- 17" 8-spoke bright-finish aluminum wheels
- 18" 8-spoke bright-aluminum wheels
- 18" 7-spoke chrome-clad aluminum wheels
- P215/60R17 tires
- P225/55R18 tires
- AdvanceTrac<sup>®</sup> Electronic Stability Control

#### SEATING

- 8-way power driver seat (with memory on Limited)
- 2-way power fold-flat front-passenger seat
- 4-way power fold-flat front-passenger seat with manual lumbar adjustment
- Heated driver and front-passenger seats with 2 heat settings<sup>3</sup>
- Leather-trimmed seats with contrast stitching
- Memory settings for driver seat and sideview mirrors

#### INTERIOR

- AM/FM stereo with single-CD player
- Premium AM/FM stereo/6-disc in-dash CD changer with MP3 capability
- Audiophile<sup>®</sup> Sound System with AM/FM stereo/6-disc in-dash CD changer with MP3 capability and subwoofer
- Dual-zone Electronic Automatic Temperature Control
- DVD Family Entertainment System with 2 sets of wireless headphones<sup>4</sup> (not available with power moonroof)
- Power-adjustable pedals
- Power-adjustable pedals with memory
- SIRIUS Satellite Radio<sup>5</sup>
- Universal Garage Door Opener
- Voice-activated DVD-based Navigation System<sup>4</sup>

#### EXTERIOR

- Anti-theft perimeter alarm
- Automatic headlamps with on/off delay and wiper-activated headlamps feature
- Power, heated sideview mirrors with security approach lamps (chrome-accented with memory on Limited)
- Power moonroof
- Reverse Sensing System

#### PACKAGES

- Interior Convenience Package – Includes AM/FM stereo/6-disc in-dash CD changer with MP3 capability, Dual-zone Electronic Automatic Temperature Control, automatic headlamps including the wiper-activated headlamps feature, outside temperature display, 8-way power driver seat, and woodgrain appearance on door-trim appliques
- Limited Convenience Package – Includes power-adjustable pedals with memory, Universal Garage Door Opener, Reverse Sensing System and trunk cargo net
- Limited Wood Package – Includes woodgrain insert on steering wheel and shift knob (late availability)
- Safety and Security Package – Includes anti-theft perimeter alarm; power, heated sideview mirrors with security approach lamps; remote perimeter lighting; and AdvanceTrac

● Standard ● Available as Part of a Package ○ Optional — Not Available

<sup>3</sup>Requires leather-trimmed seats and Interior Convenience Package on SEL. <sup>4</sup>Requires Interior Convenience Package on SEL. <sup>5</sup>SIRIUS not available in Alaska or Hawaii. See your Ford Dealer or contact SIRIUS at 1-888-539-7474 for more information. Audiophile is a registered trademark of Audiophile, Inc. <sup>6</sup>SIRIUS, the SIRIUS dog logo and "The Best Radio on Radio" are registered trademarks of SIRIUS Satellite Radio Inc.

## ENGINE

### 3.5L 24-VALVE DOHC DURATEC V6 ENGINE

Horsepower (hp @ rpm) 263 @ 6250  
Torque (lb.-ft. @ rpm) 249 @ 4500

## 2008 EPA-ESTIMATED FUEL ECONOMY

FWD 18 mpg city/28 hwy.  
AWD 17 mpg city/24 hwy.



# Specifications.

25  
Taurus

## INTERIORS



Camel Cloth  
Standard on SEL



Medium Light Stone Cloth  
Standard on SEL



Camel Leather  
Standard on Limited;  
Available on SEL



Medium Light Stone Leather  
Standard on Limited;  
Available on SEL



Black Leather  
Standard on Limited

### CAMEL

#### MEDIUM LIGHT STONE

#### SEL

- Oxford White
- Dune Pearl Metallic
- Merlot Metallic
- Titanium Green Metallic
- Light Sage Metallic
- Light Ice Blue Metallic
- Dark Ink Blue Metallic
- Silver Birch Metallic
- Alloy Metallic
- Black

### CAMEL

#### MEDIUM LIGHT STONE

#### BLACK

#### LIMITED

- Oxford White
- Dune Pearl Metallic
- Merlot Metallic
- Titanium Green Metallic
- Light Sage Metallic
- Light Ice Blue Metallic
- Dark Ink Blue Metallic
- Silver Birch Metallic
- Alloy Metallic
- Black

## DIMENSIONS

EXTERIOR (in.)	FWD/AWD
Length	201.8
Wheelbase	112.9
Width	74.5
Height	61.5
INTERIOR (in.)	
Front	
Head room	39.6
Shoulder room	57.8
Hip room	53.7
Leg room	41.3
Rear	
Head room	38.8
Shoulder room	57.6
Hip room	53.6
Leg room	41.2
Capacities (cu. ft.)	
Passenger volume	108.0
Cargo volume	21.2
Total interior volume	129.2
Fuel capacity (gal.)	20.5
Seating	5

## WHEELS

- A** 17" 8-Spoke Bright-Finish Aluminum  
Standard on SEL
- B** 18" 8-Spoke Bright-Aluminum  
Standard on Limited
- C** 18" 7-Spoke Chrome-Clad Aluminum  
Available on SEL and Limited



## EXTERIORS



Oxford White



Dune Pearl Metallic



Merlot Metallic



Titanium Green Metallic



Light Sage Metallic



Light Ice Blue Metallic



Dark Ink Blue Metallic



Silver Birch Metallic



Alloy Metallic



Black

Ford uses clearcoat paint for beauty and protection. Colors shown are representative only. Not all colors are available on all models. See your dealer for actual paint/trim options. Vehicles shown may contain optional equipment.

### THE 5 YEAR/60,000 MILE POWERTRAIN WARRANTY

**New Vehicle Limited Warranty**  
We want your Ford Taurus ownership experience to be the best it can be. So under this warranty, your new vehicle comes with 3-year/36,000-mile Bumper-to-Bumper Coverage, 5-year/60,000-mile Powertrain Warranty Coverage and Roadside Assistance. 5-year/50,000-mile Safety Restraint Coverage, and 5-year/unlimited-mile Corrosion (Perforation) Coverage – all with no deductible. Please ask your Ford Dealer for a copy of this limited warranty.

For more assurance: The 5-year/60,000-mile powertrain limited warranty is fully transferable, has no deductible, and provides you with an additional 2 years or 24,000 miles of coverage – on select components, including the engine and transmission – beyond the standard 3-year/36,000-mile Bumper-to-Bumper Coverage. Roadside Assistance is extended to 5 years or 60,000 miles, so you have the security of knowing that help may be only a phone call away should you run out of fuel, lock yourself out of the vehicle, or need towing. Your Ford Dealer can provide complete details on all of these advantages.

**Ford Credit** Get the ride you want. Whether you plan to lease or finance, you'll find the choices that are right for you at Ford Credit. Ask your Ford Dealer for details or check us out at [fordcredit.com](http://fordcredit.com).

**Ford Motor Company Insurance Services** Get Ford Motor Company quality in your auto insurance. Our program offers industry-leading benefits and competitive rates. Call 1-877-367-3847, or visit us at [fordvip.com](http://fordvip.com) for a no-obligation quote. Insurance offered by American Road Services Company (in CA, American Road Insurance Agency), a licensed agency and subsidiary of Ford Motor Company.

**EXTENDED SERVICE PLAN** For a purchase or lease, the Ford Extended Service Plan (ESP) gives you "Peace-of-Mind" protection designed to cover key vehicle components and protect you from the cost of unexpected repairs. Ask your dealer for an ESP, the only service contract backed exclusively by Ford and honored at all Ford Lincoln Mercury dealerships.

**GENUINE ACCESSORIES** Genuine Ford Accessories are designed and engineered specifically for Ford vehicles. Visit our website at [fordaccessoriesstore.com](http://fordaccessoriesstore.com) to use the Accessorizer, and to learn about complete accessory details and purchase instructions.



## The Right Ford for You

For a great value, look to Ford. The all-new Taurus and Taurus X are America's ideal family vehicles – loaded with the latest in 5-Star safety and full-size necessities. The breakthrough Fusion is the essence of midsize quality, taking handling finesse to an available All-Wheel-Drive degree. The fun-loving Focus is new inside and out, running with compact efficiency<sup>1</sup> and eco-responsibility. Mustang is pure muscle, making it America's best-selling sports car *and* top-selling convertible.

Visit [fordvehicles.com](http://fordvehicles.com) to find your perfect match.

<sup>1</sup>Mid-20s mpg hwy, based on preliminary Ford testing.



All-New Taurus X



Fusion



Focus



Mustang

