

S U Z U K I 0 9

G R A N D V I T A R A



  
**SUZUKI**  
SUZUKIAUTO.COM

# Grand Vitara

**LIVE LARGE.  
DRIVE SMALL.**

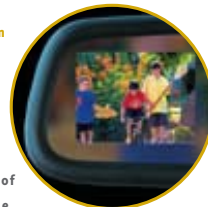
The new Suzuki Grand Vitara is a true SUV in an adventure-ready, travel size package. Unlike other compact SUVs, the GV offers authentic 4-wheel drive and a robust 230-horsepower engine (that's 64 more horses than a Honda CR-V<sup>1,2</sup>). The GV delivers the best fuel efficiency of any truly off-road-capable compact V6 SUV<sup>#</sup>, and it comes equipped with America's #1 Warranty.<sup>4</sup> Discover more at SuzukiGV.com.

<sup>1</sup>Honda CR-V is a registered trademark of Honda Motor Co., Ltd. <sup>2</sup>Based on manufacturer's Web Site as of September 2008. <sup>3</sup>Based on compact SUVs with low range 4WD systems and gas mileage statistics from EPA emissions testing. <sup>4</sup>All new Suzuki automobiles come standard with a 100,000-mile/7-year powertrain limited warranty. See dealer or SuzukiAuto.com for complete warranty details. SUVs handle differently than ordinary passenger cars. Federal law cautions to avoid sharp turns and abrupt maneuvers. Always wear your seatbelt. For specific details, please read your Owner's Manual. <sup>#</sup>Tread Lightly<sup>®</sup> on public and private land. © American Suzuki Motor Corporation 2008. Suzuki, the "S" logo, Suzuki model names and Live Large, Drive Small, are Suzuki trademarks or ®.



## HINDSIGHT

The available rear-vision camera, built right into the rear-view mirror, means greater security for you and your family by helping you back up safely with a clear view of what's behind the vehicle.



4WD POWER

## SHIFT

Grand Vitara's available shift-on-the-fly 4WD easily adjusts for optimum traction, and as a hard-to-find bonus, it even includes a neutral mode that lets you tow your Grand Vitara without adding a mile to your odometer.



## EFFICIENT POWER

The available 3.2-liter 24-valve DOHC engine hits 230 hp with a fat 213 lb.-ft. of torque. It has 24% more power, a better power-to-weight ratio, higher mpg and cleaner emissions than last year's 2.7-liter V6. Not to be outdone, that standard 2.4-liter 16-valve DOHC four-cylinder has one of the best 4WD MPG in its class.

## TRACTION



**4WD High** is great for most driving conditions. It helps give you smooth on-road performance and all-weather traction.



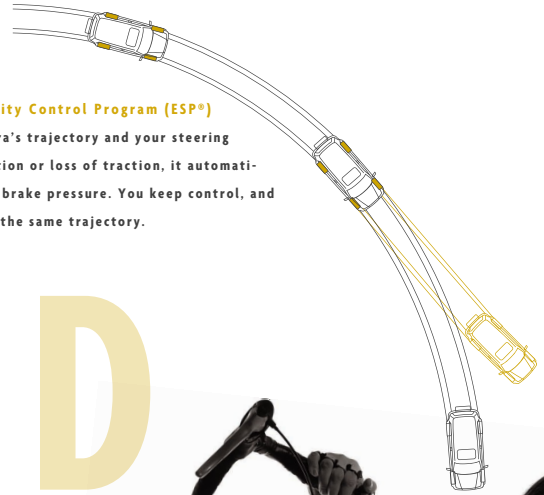
**4WD High Lock** powers you through mud and snow by distributing traction evenly to front and rear wheels.



**4WD Low-Lock** helps give you the traction you need to get out of—or into—the toughest road and off-road conditions.

## CONTROL

The standard **Electronic Stability Control Program (ESP®)** constantly monitors Grand Vitara's trajectory and your steering input. If it detects skidding motion or loss of traction, it automatically adjusts throttle input and brake pressure. You keep control, and Grand Vitara helps keep you on the same trajectory.



## STOP!

4-wheel ventilated disc brakes help give you solid stopping power. And in case you ever need it for sudden stops, the **Anti-lock Braking System (ABS)** helps keep you in control.



## CLIMBER

Off-road, the robust Grand Vitara leaves the other SUVs in the dust. With its available full-time, 4-mode 4WD system and low-range gearing with two-speed transfer case, you can lock it in low and take in the rough stuff without breaking a sweat.



# GRAND VITARA

# SPECIFICATIONS

## GRAND VITARA SPECIFICATIONS AND FEATURES

S = Standard O = Optional — = Not Available

	BASE	PREMIUM	XSPORT	LUXURY
<b>ENGINE</b>				
2.4-liter In-line-4, 166 hp, 16-valve DOHC engine	S	S	S	S
3.2-liter V6, 230 hp, 24-valve DOHC engine	—	—	O	O
Zero-maintenance, self-adjusting timing chain	S	S	S	S
<b>TRANSMISSION</b>				
5-speed manual transmission	S	S	—	—
4-speed electronically controlled, automatic transmission	O	O	S <sup>1</sup>	S <sup>1</sup>
5-speed electronically controlled, automatic transmission	—	—	S <sup>2</sup>	S <sup>2</sup>
Rear-Wheel Drive (RWD)	S	S	S	S
Single-mode 4-Wheel Drive (4WD) system	—	O	—	—
Full-time, 4-mode 4-Wheel Drive (4WD) system with low-range locking transfer case	—	—	O	O
Hill Hold Control (HHC) and Hill Descent Control (HDC)	—	—	S <sup>2,3</sup>	S <sup>2,3</sup>

## BODY/SUSPENSION/CHASSIS

	BASE	PREMIUM	XSPORT	LUXURY
Unibody chassis with built-in ladder frame	S	S	S	S
4-wheel ventilated disc brakes	S	S	S	S
4-wheel fully independent multi-link suspension	S	S	S	S
Power assisted rack-and-pinion steering	S	S	S	S

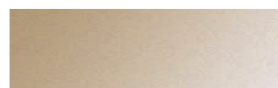
## EXTERIOR FEATURES

	BASE	PREMIUM	XSPORT	LUXURY
Styled steel wheels	16"	16"	—	—
Alloy wheels	—	16"	16"/17" <sup>2</sup>	17"/18" <sup>2</sup>
Multi-reflector halogen projector headlights	S	S	S	S
Front fog lamps	—	—	S	S
Roof rails	—	—	S	S
Heated outside mirrors	—	S <sup>3</sup>	S <sup>3</sup>	S
Variable intermittent front windshield wipers and rear wiper/washer/defroster	S	S	S	S
Rear-mounted full-size spare tire	S	S <sup>4</sup>	S	S <sup>4</sup>
Rear-mounted exposed alloy spare wheel	—	—	S	—
Rear privacy glass	—	S	S	S

## COLORS



White Water Pearl



Sandstorm Metallic



Quicksilver Metallic



Volcano Red



Black Pearl



Slate Grey Metallic



Deep Sea Blue Metallic



- ■ Beige Fabric  
Base and Premium
- ■ Black Fabric  
Base, XSport and Premium

- ■ Beige Leather/Walnut Wood Grain  
Luxury
- ■ Black Leather/Black Wood Grain  
Luxury

## COMFORT AND CONVENIENCE

	BASE	PREMIUM	XSPORT	LUXURY
Digital automatic climate control air conditioning with micron air-filtration system	S	S	S	S
Remote keyless entry with panic alarm	S	S	S	S
SmartPass™ keyless start and entry system	—	—	S	S
HomeLink® wireless control system	—	—	—	S <sup>2</sup>
Steering wheel with illuminated audio controls	S	S	S	S
Cruise control	—	S	S	S
Power tilt-and-slide sunroof	—	—	S	S
Power windows/door locks/mirrors, with illuminated auto-down driver's window switch	S	S	S	S
Auto on/off headlamps	S	S	S	S
Trip computer with average/instant fuel economy and outside temperature display	S	S	S	S
Sliding front center armrest with storage compartment	S	S	S	S
Leather-wrapped steering wheel	—	S <sup>6</sup>	S	S
Satin nickel accented interior trim with chrome interior door handles	S	S	S	S
Cargo area with below-deck storage bin, pockets, lamp and power outlet	S	S	S	S
Cargo area cover	—	S	S	S

## AUDIO SYSTEMS

	BASE	PREMIUM	XSPORT	LUXURY
4-speaker AM/FM/CD audio system with MP3/WMA™ playback, XM® ready <sup>7</sup>	S	S	—	—
4-speaker AM/FM/CD audio system with in-dash 6-disc changer, MP3/WMA™ playback, XM® ready <sup>7</sup>	—	—	S <sup>1</sup>	—
8-speaker AM/FM/CD audio system with in-dash 6-disc changer, MP3/WMA™ playback, subwoofer, XM® ready <sup>7</sup>	—	—	S <sup>2</sup>	S

© American Suzuki Motor Corporation 2008 • P.O. Box 1100, Brea, 92822-1100 • 1-877-MY-SUZUKI (1-877-697-8985)  
 Drive responsibly: Buckle up for safety—don't drink and drive. WARNING: Sport Utility Vehicles handle differently from ordinary passenger cars. Avoid sharp turns and abrupt maneuvers. Always wear your seatbelt. For specific details, please read your Owner's Manual for on- and off-road driving tips. To avoid injury from an airbag, always place children 12 years old and under in the rear seat; always move both driver and passenger seats as far back from airbag as practical; never transport a child in a rear-facing child seat in the front seat; and always use the seatbelts and buckle up properly. Always keep cargo loads within specified weight limits, distribute cargo evenly and secure it from shifting. Pricing, specifications and equipment based on information available at the time of file posting, subject to change without notice and may differ in each sales area. Some vehicles shown with optional equipment. For more details on 2007 options, accessories, specifications and prices, contact your local Suzuki dealer. Suzuki, the "S" logo, Suzuki and Suzuki model names are Suzuki trademarks or ®. "Tread Lightly®" on public and private land. Along with concerned conservationists everywhere, Suzuki urges you to preserve your future off-road driving opportunities by showing respect for the environment local laws and the rights of others.

# GRAND VITARA SPECIFICATIONS

## America's #1 Warranty

100,000 Miles/7 Yr • No Deductible • Fully Transferable

Why is it America's #1? It's the only 100,000-mile/7-year powertrain limited warranty around that doesn't have a deductible and is fully transferable for the life of the warranty. That's huge, and that's why the other guys don't talk about deductibles and transfer capability. No deductible means covered repairs are covered—you don't pay anything for parts and labor. Fully transferable means the warranty can pass from one owner to the next, increasing resale and trade-in value when it's time to buy your next car. With coverage extended for 100,000 miles or 7 years, whichever comes first, you can average a more than reasonable 14,000 miles per year. The strength of this long-term powertrain protection is compounded by a 36,000-mile/3-year new-vehicle limited warranty that also has no deductible and covers everything from the dome light to the exhaust pipe (except the battery, which is covered for 24,000 miles, and tires, which are covered by the tire manufacturer's warranty), and includes comprehensive 24-hour Roadside Assistance as well as a convenient Courtesy Vehicle Program. So...that's why we can say it's America's #1. Sounds good, doesn't it!

### GRAND VITARA SPECIFICATIONS AND FEATURES

S = Standard O = Optional — = Not Available

#### SEATING

	BASE	PREMIUM	XSPORT	LUXURY
6-way adjustable driver's seat	S	S	S	S
Reclining 60/40 split fold-and-tumble rear seats	S	S	S	S
Leather trim seats	—	—	—	S
Heated front seats	—	—	—	S

#### SAFETY FEATURES

4-wheel Anti-lock Braking System (ABS) with Electronic Brake-force Distribution (EBD)	S	S	S	S
Electronic Stability Program (ESP <sup>®</sup> ) with Traction Control System (TCS)	S	S	S	S
Supplemental Restraint System (SRS): Advanced, dual-stage driver and weight-sensing front-passenger airbags	S	S	S	S
Front seat-mounted side impact airbags	S	S	S	S
Front and rear side-curtain airbags with rollover sensors	S	S	S	S
Height-adjustable front safety belts with pretensioners	S	S	S	S
Headrests and 3-point safety belts at all 5 seating positions	S	S	S	S
Rear child-seat LATCH system and rear-door child safety locks	S	S	S	S
Tire Pressure Monitoring System (TPMS <sup>5</sup> )	S	S	S	S
Projector beam headlamps with Daytime Running Lights (DRL)	S	S	S	S

	BASE AND PREMIUM	XSPORT AND LUXURY
<b>INTERIOR DIMENSIONS</b>		
Headroom, front/rear (in.)	40.0/38.2	38.2 <sup>10</sup> /38.2
Legroom, front/rear (in.)	41.3/37.2	41.3/37.2
Shoulder room, front/rear (in.)	56.3/54.9	56.3/54.9
Hip room, front/rear (in.)	55.5/44.0	55.5/44.0

	BASE AND PREMIUM	XSPORT AND LUXURY
<b>EXTERIOR DIMENSIONS</b>		
Wheelbase (in.)	103.9	103.9
Overall length with spare tire (in.)	177.1	177.1
Overall width (in.)	71.3	71.3
Overall height (in.)	66.7	66.7

#### CAPACITIES

	BASE AND PREMIUM	XSPORT AND LUXURY
Seating (passengers)	5	5
Interior volume (cu. ft.)	125.4	122.9
Cargo volume (SAE) rear seat up/down (cu. ft.)	24.4/68.9	23.8/67.3
Tow rating (lb.)	3,000	3,000
Fuel capacity (gal.)	17.4	17.4

#### EPA ESTIMATED FUEL ECONOMY

	RWD	4WD
Manual Inline-4 city/highway (mpg)	19/26	19/25
Automatic Inline-4 city/highway (mpg)	19/25	19/23
Automatic V6 city/highway (mpg)	18/24	17/23

<sup>1</sup>Only available on Inline-4 model. <sup>2</sup>Only available on V6 model. <sup>3</sup>Only available on 4WD model. <sup>4</sup>Includes full hard cover with Suzuki logo. <sup>5</sup>HomeLink<sup>®</sup> is a registered trademark of Johnson Controls, Inc. <sup>6</sup>Late availability. <sup>7</sup>Required XM<sup>®</sup> tuner and subscription sold separately. All fees and programming subject to change. Subscriptions subject to customer agreement available at xmradio.com. XM<sup>®</sup> service only available in the 48 contiguous United States. The XM<sup>®</sup> name is a registered trademark of XM<sup>®</sup> Satellite Radio, Inc. <sup>8</sup>ESP<sup>®</sup> is a registered trademark of DaimlerChrysler AG. <sup>9</sup>The Tire Pressure Monitoring System (TPMS) is not a substitute for regular tire pressure inspections. Tire pressures should be checked at least monthly using a tire pressure gauge. Maintaining the recommended tire pressure can help avoid performance problems, tire damage and premature wear. See the Owner's Manual for additional details. <sup>10</sup>With sunroof. <sup>11</sup>iPod<sup>®</sup> is a registered product of Apple, Inc. <sup>12</sup>Bluetooth<sup>®</sup> is a registered trademark of Bluetooth SIG, Inc. Jeep Liberty<sup>®</sup>, Toyota RAV4<sup>®</sup>, Honda CR-V<sup>®</sup>, Nissan Rogue<sup>®</sup>, Jeep Patriot<sup>®</sup>, Jeep Grand Cherokee<sup>®</sup>, Hummer H3<sup>®</sup> and Land Rover LR2<sup>®</sup> are registered trademarks. Kelley Blue Book<sup>®</sup> is a registered trademark of Kelley Blue Book Co., Inc. All competitor specifications are pulled from manufacturers' websites and based on MY08. Color options may vary by trim. Specifications and equipment based on information available at time of print and subject to change without notice. For more information, contact your local Suzuki dealer or visit [SuzukiAuto.com](http://SuzukiAuto.com).

© 2008 American Suzuki Motor Company

#### GRAND VITARA ACCESSORIES



iPod<sup>®</sup> Interface



Side Steps



Bluetooth<sup>®</sup> Headliner Connectivity



Rear Spoiler



Trailer Hitch