

# The 2025 Sportage



Movement that inspires



# Reimagined like you.

The 2025 Sportage reimagines innovation in motion. It pushes the boundaries of urban SUV design and technology with refinement and purpose, while delivering all the comforts and connectivity modern adventures require.

For those who keep moving. For those who keep seeking. Inspiration is never out of reach.



# Designed for the driver in you.

From the curved display to the intelligent, easy-to-use controls, everything in Sportage's modern cockpit is designed to enhance your driving experience.

## Panoramic curved display<sup>1</sup>

combines driving functions and the centre infotainment and navigation screens in one manageable frame. Simple graphics and touch commands give the driver top priority.



## Blind-spot view monitor<sup>1,2</sup>

keeps an eye on traffic approaching from behind. When you signal a lane change, a monitor in the instrument cluster shows a live image of the lane so you can manoeuvre safely.



## Terrain mode<sup>1</sup>

helps provide improved traction and greater control in mud, snow and sand.



## Wireless charging<sup>1,3</sup>

keeps your smartphone fully charged while you're on the road.

<sup>1</sup> Available feature. See features page or visit [kia.ca](http://kia.ca) for full details. International model shown.

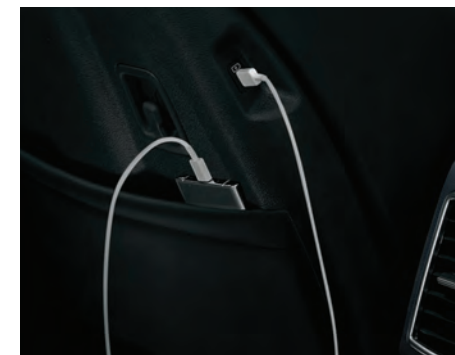


## Comfort all around.

The Sportage's versatile cabin is designed to be relaxing and spacious. It's filled with an impressive range of standard and available technologies for your convenience, comfort, and confidence.



**Infotainment/climate switchable controller<sup>1</sup>** share the same LCD softkey keyboard. Press the fan icon to transform the controls on the right to climate, and press the arrow icon to switch them to infotainment.



**USB charging ports<sup>1</sup>** for rear passengers are conveniently located in the seatbacks ahead of them.

<sup>1</sup> Available feature. See features page or visit [kia.ca](http://kia.ca) for full details. International model shown.

# Features and versatility for life on the move.

What's an adventure without your gear? Sportage gets you wherever you're going-with everything you want to bring along.



## Expansive cargo space

allows for multiple configurations, easy access, and endless adventure.

## Smart-power liftgate<sup>1</sup>

opens automatically when you stand behind it for three seconds with your Smart Key — and closes with the push of a button.

## Kia Connect<sup>1</sup>

integrates with your compatible smartphone to let you start the engine and turn on the AC/heat from a distance.



<sup>1</sup> Available feature. See features page or visit [kia.ca](http://kia.ca) for full details. International model shown.

# Advanced intelligence that protects.

Sportage employs a feature-rich array of next-level technologies to observe, sense, and even intervene when your driving safety is at risk.



## Forward collision-avoidance assist<sup>2</sup>

is designed to alert you of a potential collision with a vehicle or pedestrian, and can apply the brakes to reduce or avoid impact. An available junction turning function<sup>1</sup> will warn you with an audible alert if it detects a vehicle approaching yours when you are making a left turn at an intersection.

## Blind-spot collision-avoidance assist<sup>1,2</sup>

uses radar to detect vehicles in your blind spot and may apply braking power when an approaching vehicle is detected within a certain distance, next to or behind your vehicle.

## Lane follow assist<sup>2</sup>

uses a camera at the front windshield to detect lane markers on the road to help keep you in the centre of your lane.

## Rear cross-traffic collision avoidance-assist<sup>1,2</sup>

helps detect approaching cross traffic when in reverse. When approaching cross traffic is detected, the system alerts the driver and may apply brakes.

<sup>1</sup> Available feature. See features page or visit [kia.ca](http://kia.ca) for full details.

# Features

## LX FWD

EXTERIOR	SAFETY	TECHNOLOGY	INTERIOR
<ul style="list-style-type: none"> <li>• 17" alloy wheels</li> <li>• Temporary spare tire</li> <li>• Automatic headlights</li> <li>• LED multi-reflection headlights</li> <li>• LED positioning lights</li> <li>• LED daytime running lights</li> <li>• LED &amp; bulb combination taillights</li> <li>• LED high mounted stop lamp</li> <li>• Acoustic laminated windshield</li> <li>• Privacy tinted rear door glass</li> <li>• Power and heated sideview mirrors</li> <li>• Body coloured sideview mirrors</li> <li>• Body coloured door handles</li> <li>• Trailer lighting pre-wiring</li> <li>• Rear spoiler</li> <li>• Roof rails</li> <li>• Splash guards</li> </ul>	<ul style="list-style-type: none"> <li>• 8 airbags (dual advanced front, dual side curtain, dual front side seat, dual rear side)</li> <li>• Electronic stability control (ESC)</li> <li>• 4-wheel anti-lock braking system (ABS)</li> <li>• Hill-assist control (HAC)</li> <li>• Downhill brake control (DBC)</li> <li>• Trailer stability assist (TSA)</li> <li>• Forward collision-avoidance assist (FCA)<sup>2</sup></li> <li>• Lane keeping assist system (LKAS)<sup>2</sup></li> <li>• Lane following assist (LFA)<sup>2</sup></li> <li>• Rear occupant alert<sup>2</sup></li> <li>• Tire pressure monitoring system (TPMS)</li> <li>• Immobilizer</li> <li>• Rearview camera with dynamic guidelines<sup>2</sup></li> <li>• Central door lock</li> <li>• Low washer fluid warning indicator</li> </ul>	<ul style="list-style-type: none"> <li>• 8" Display audio</li> <li>• 6-speaker audio</li> <li>• USB charging port</li> <li>• Media input port</li> <li>• Bluetooth® hands-free cell phone connectivity<sup>3,7</sup></li> <li>• Apple CarPlay® and Android Auto™ smartphone integration<sup>3,8,9</sup></li> <li>• 4.2" Supervision LCD/TFT instrument cluster</li> <li>• Steering wheel-mounted audio controls</li> <li>• Keyless entry</li> <li>• Electronic parking brake</li> <li>• 12V cabin power outlet</li> <li>• Cruise control</li> <li>• Drive Mode Select</li> <li>• Idle 'Stop &amp; Go' technology</li> </ul>	<ul style="list-style-type: none"> <li>• Air conditioning</li> <li>• Rear climate ventilation</li> <li>• Cloth seats</li> <li>• Heated front seats</li> <li>• Height adjustable driver's seat</li> <li>• 60:40 split-folding rear seats</li> <li>• Tilt and telescopic steering wheel</li> <li>• Power windows with driver's window auto down</li> <li>• Illuminated vanity mirrors</li> </ul>

## LX AWD - adds to or upgrades from LX FWD

- All-wheel drive (AWD)

## X-LINE - adds to or upgrades from LX AWD

EXTERIOR	SAFETY	TECHNOLOGY	INTERIOR
<ul style="list-style-type: none"> <li>• 19" alloy wheels with Michelin tires</li> <li>• Black exterior accents</li> <li>• X-Line design elements</li> <li>• Ladder-type roof rails</li> <li>• Sideview mirror signal repeaters</li> </ul>	<ul style="list-style-type: none"> <li>• Blind spot collision avoidance assist<sup>2</sup></li> <li>• Rear cross-traffic avoidance assist<sup>2</sup></li> <li>• Rear parking sensors<sup>2</sup></li> </ul>	<ul style="list-style-type: none"> <li>• Smart key with push-button start</li> <li>• Remote car starter</li> <li>• Wireless phone charger<sup>3</sup></li> </ul>	<ul style="list-style-type: none"> <li>• Quilt-pattern leather seats (synthetic)</li> <li>• Power adjustable driver's seat</li> <li>• 2-way driver's seat lumbar support</li> <li>• Heated steering wheel</li> <li>• Leather-wrapped steering wheel</li> <li>• Leather-wrapped gear shift knob</li> </ul>

## EX - adds to or upgrades from X-LINE

EXTERIOR	SAFETY	TECHNOLOGY	INTERIOR
<ul style="list-style-type: none"> <li>• 18" alloy wheels</li> <li>• LED fog lights</li> <li>• Rain sensing wipers</li> <li>• Panoramic sunroof</li> <li>• Solar glass</li> <li>• Heated windshield</li> <li>• Roof rails</li> <li>• Gloss black grille</li> </ul> <p><i>(19" alloy wheels, X-Line design elements, and Ladder-type roof rails deleted)</i></p>	<ul style="list-style-type: none"> <li>• Advanced Forward Collision Avoidance Assist with Junction Turning Function<sup>2</sup></li> </ul>	<ul style="list-style-type: none"> <li>• 12.3" multimedia interface with integrated navigation<sup>4</sup></li> <li>• HD radio</li> <li>• SiriusXM® satellite radio<sup>6</sup></li> <li>• Kia Connect<sup>3,5</sup></li> <li>• Smart cruise control (SCC)<sup>2</sup> with stop &amp; go</li> <li>• LED interior lighting</li> <li>• HomeLink® system<sup>11</sup></li> </ul>	<ul style="list-style-type: none"> <li>• Dual-zone automatic climate control</li> <li>• Automatic defog system</li> <li>• Leather seats (synthetic)</li> <li>• Obstacle-detecting front windows</li> </ul> <p><i>(Quilt-pattern leather seats deleted)</i></p>

## EX PREMIUM - adds to or upgrades from EX

EXTERIOR	SAFETY	TECHNOLOGY	INTERIOR
<ul style="list-style-type: none"> <li>• 19" alloy wheels</li> <li>• Matte chrome and dark satin finish elements</li> </ul>	<ul style="list-style-type: none"> <li>• Front and rear parking sensors<sup>2</sup></li> </ul>	<ul style="list-style-type: none"> <li>• Smart power liftgate</li> </ul>	<ul style="list-style-type: none"> <li>• Quilt-pattern leather seats (synthetic)</li> <li>• Driver's seat memory function</li> <li>• Power adjustable front passenger's seat</li> <li>• Air-cooled front seats</li> <li>• Heated rear seats</li> <li>• Alloy pedals</li> <li>• Deluxe door scuff plates</li> <li>• Satin chrome interior door handles</li> </ul>

## X-LINE LIMITED - adds to or upgrades from EX PREMIUM

EXTERIOR	SAFETY	TECHNOLOGY
<ul style="list-style-type: none"> <li>• 19" alloy wheels with Michelin tires</li> <li>• Black exterior accents</li> <li>• X-Line design elements</li> <li>• Ladder-type roof rails</li> <li>• Projection LED headlights</li> <li>• LED taillights</li> <li>• LED fog lights</li> </ul>	<ul style="list-style-type: none"> <li>• Parking collision avoidance assist — reverse<sup>2</sup></li> <li>• Highway drive assist (HDA)<sup>2</sup></li> <li>• Blind view monitor<sup>2</sup></li> <li>• Surround view monitor<sup>2</sup></li> </ul>	<ul style="list-style-type: none"> <li>• Harman Kardon® premium audio system<sup>10</sup></li> <li>• 12.3" Supervision LCD/TFT instrument cluster</li> </ul>

# Specifications

## Mechanical

Engine type	2.5L 4-cylinder
Horsepower	187 hp @ 6,100 rpm
Torque	178 lb.ft. @ 4,000 rpm
Transmission	8-speed automatic
Drive type	Front-wheel drive (FWD); available all-wheel drive (AWD)
Recommended fuel	Regular unleaded

## Measurements

Towing capacity <sup>12</sup>	1,653 lb - 2,500 lb
Fuel tank capacity	54 L
Cargo capacity behind 1 <sup>st</sup> row (cargo floor raised/lowered)	1,962/2,098 L (69.3/74.1 cu. ft.)
Cargo capacity behind 2 <sup>nd</sup> row (cargo floor raised/lowered)	1,036/1,121 L (36.6/39.6 cu. ft.)

## Fuel consumption

City/Highway/Combined (L/100km)	FWD: 9.3/7.1/8.3 AWD: 10.1/8.7/9.4
---------------------------------	---------------------------------------

Please visit [kia.ca](http://kia.ca) for full vehicle specifications.

## Wheels



LX  
17" alloy wheels



EX  
18" alloy wheels



EX Premium  
19" alloy wheels



X-Line/X-Line Limited  
19" alloy wheels

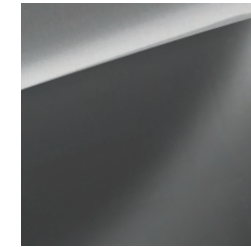
## Exterior colours



Snow White Pearl



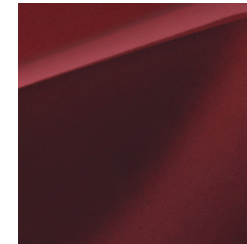
Fusion Black



Steel Grey



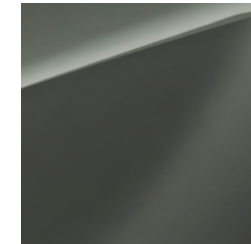
Gravity Grey



Dawning Red



Vesta Blue



Jungle Green\*

\*Only available on X-Line and X-Line Limited. Visit [kia.ca](http://kia.ca) for full details.

## Interior colours



LX  
Black cloth



EX  
Black leather (synthetic)



EX Premium  
Carmine Red quilted leather  
(synthetic)



EX Premium  
Black quilted leather (synthetic)



X-Line/X-Line Limited  
Black quilted leather (synthetic)



X-Line Limited  
Sage Green quilted leather  
(synthetic)

Some seating, paint and trim configurations may be limited. Visit [kia.ca](http://kia.ca) for full details.

# Kia Accessories

Built to fit right, work right and look great.



Cargo cover

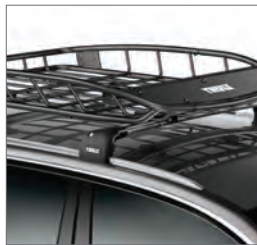


All-weather mats



Side steps

Accessory wheels



Roof cargo rack



Cross bars



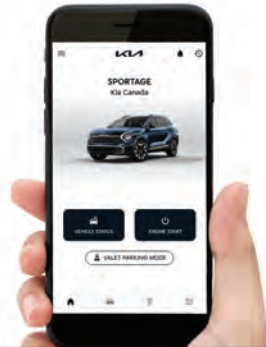
Roof cargo box

Available accessories may vary. Images shown for illustration purposes only. Items and selection may change. See Dealer for details

## Kia Connect

A world of support services that enhance your security, comfort and confidence — every time you get behind the wheel.

Free for the first three years. Available feature. See features page or visit [kia.ca](http://kia.ca) for full details.



## SiriusXM

With your new vehicle, enjoy access to SiriusXM® satellite radio from anywhere you go - while you're on the road, using the smartphone app, online, or even through your smart TV.

Free for the first 3 months. Available feature. See features page or visit [kia.ca](http://kia.ca) for full details.



## We've got you covered<sup>13</sup>

Kia engineers are passionate about producing vehicles that are exceptionally well-designed and reliable. Their dedication to quality and attention to detail give Kia the confidence to back every model with an outstanding warranty program.



**5-year/  
100,000 km**

Worry-free comprehensive warranty



**5-year/  
100,000 km**

Limited powertrain warranty



**5-year/  
unlimited km**

24-hour roadside assistance

The Kia 5-year/100,000-km warranty includes various warranties and roadside assistance. Some restrictions apply. For more information call us at 1-877-542-2886 or visit to [kia.ca](http://kia.ca).

## Endnotes

1. Available feature. See features page or visit [kia.ca](http://kia.ca) for full details. 2. None of the features we describe are intended to replace the driver's responsibility to exercise due care while driving and are not a substitute for safe driving practices. Some features may have technological limitations. For additional information regarding the various features, including their limitations and restrictions, please refer to your vehicle's Owner's Manual. 3. Compatible smartphone required. Data rates may apply, please check with your wireless service provider. For wireless charging, certain smartphones may require a wireless charging-compatible case. 4. When equipped with the navigation system, French voice commands may be limited. 5. Kia Connect only available on select models and trims. Specific functionality may vary between models and trims. Destination Search is only available on vehicles with a navigation head unit. Certain functions are only accessible on the smartphone app and/or customer web portal and/or in-vehicle head unit. Service is free for the first three years from the day the vehicle was first registered. Monthly subscription may be applicable after the free period. Please consult your dealer for details. 6. SiriusXM satellite radio service includes 3 month trial and is available in the 10 provinces and three territories of Canada, and the 48 contiguous states of the U.S. Monthly subscription sold separately after three trial months. 7. The Bluetooth word mark and logos are registered trademarks owned by Bluetooth SIG, Inc. 8. Apple, the Apple logo, CarPlay, and iPhone are trademarks of Apple Inc., registered in the US and other countries. App Store is a service mark of Apple Inc. 9. Google, Google Play, Google Maps, and Android Auto are trademarks of Google Inc. 10. Harman Kardon is a registered trademark of Harman International Industries, Inc. All rights reserved. 11. HomeLink is a registered trademark of Johnson Controls, Inc. 12. When properly equipped. Do not exceed any weight ratings and follow all towing instructions in your Owner's Manual. 13. The Kia 5-year/100,000-km warranty includes various warranties and roadside assistance. Some restrictions apply. For more information call us at 1-877-542-2886 or visit to [kia.ca](http://kia.ca).

We make every effort to ensure that the product information in this brochure is accurate at the time of printing. Occasional changes in production, that affect the standard or optional equipment included on a specific model, may occur after printing which will not be reflected in this brochure. Kia Canada Inc. reserves the right to make these changes without notice or obligation. For this reason, please rely on [kia.ca](http://kia.ca) or your local Kia dealer for the very latest product information. Some vehicles shown may include optional equipment or may not be exactly as shown. Kia Canada Inc., by the publication and dissemination of this material, does not create any warranties, either expressed or implied, to any Kia products. Reproduction of the contents of this material without the expressed written approval of Kia Canada Inc. is prohibited. © Copyright 2024 Kia Canada Inc. Printed in Canada, July 2024.



 [facebook.com/kiacanada](https://facebook.com/kiacanada)

 [twitter.com/kiacanada](https://twitter.com/kiacanada)

 [instagram.com/kiacanada](https://instagram.com/kiacanada)

 [youtube.com/kiacanada](https://youtube.com/kiacanada)



Movement that inspires