



**FROM PEOPLE WHO
KNOW WHAT PERFORMANCE
IS ALL ABOUT.**





1979 Z28. THE ULTIMATE CAMARO.

When it comes to hugging a road, there's nothing quite like the feel of Camaro Z28. It's the hugger's hugger.

What makes it so are things like Z28's standard 5.7 Litre 4-barrel V8, a Sport suspension that incorporates special shocks, front and rear stabilizer bars, a close-ratio Four-Speed transmission with a 2.64:1 first gear connected to an 11-inch high-capacity clutch. Add to that the fact that Z28 sits lower to the ground than most cars, and you've got a car that's more than capable on a winding back road or an open straightaway.

The Camaro Z28 also sparks of excitement outwardly. As pictured above, Z28 is equipped with simulated hood scoop, louvered side panels, rear spoiler, dual sport mirrors, available 15" x 7" aluminum wheels, black-finished grille and moldings around the

windshield and rear window, and Z28 identification and accent striping. Concisely stated, Z28 is a showstopper.

Inside, Z28 is no slouch. Full foam bucket seats support you. And a newly designed instrument panel provides straightline gage placement for easy reading. Included in the panel are tachometer, voltmeter, temperature gage and an electric clock.

In fact, there's no slouch at all about the Z28. From the music it plays with its unmistakable throaty idle, to its wide stance in the bend of a road, the Z28 creates its own excitement.

So, the next time you're in the mood to get away from them all with a flair, take hold of the ultimate Camaro "hugger." Take hold of the Camaro Z28.

White-lettered tires are supplied by various manufacturers.

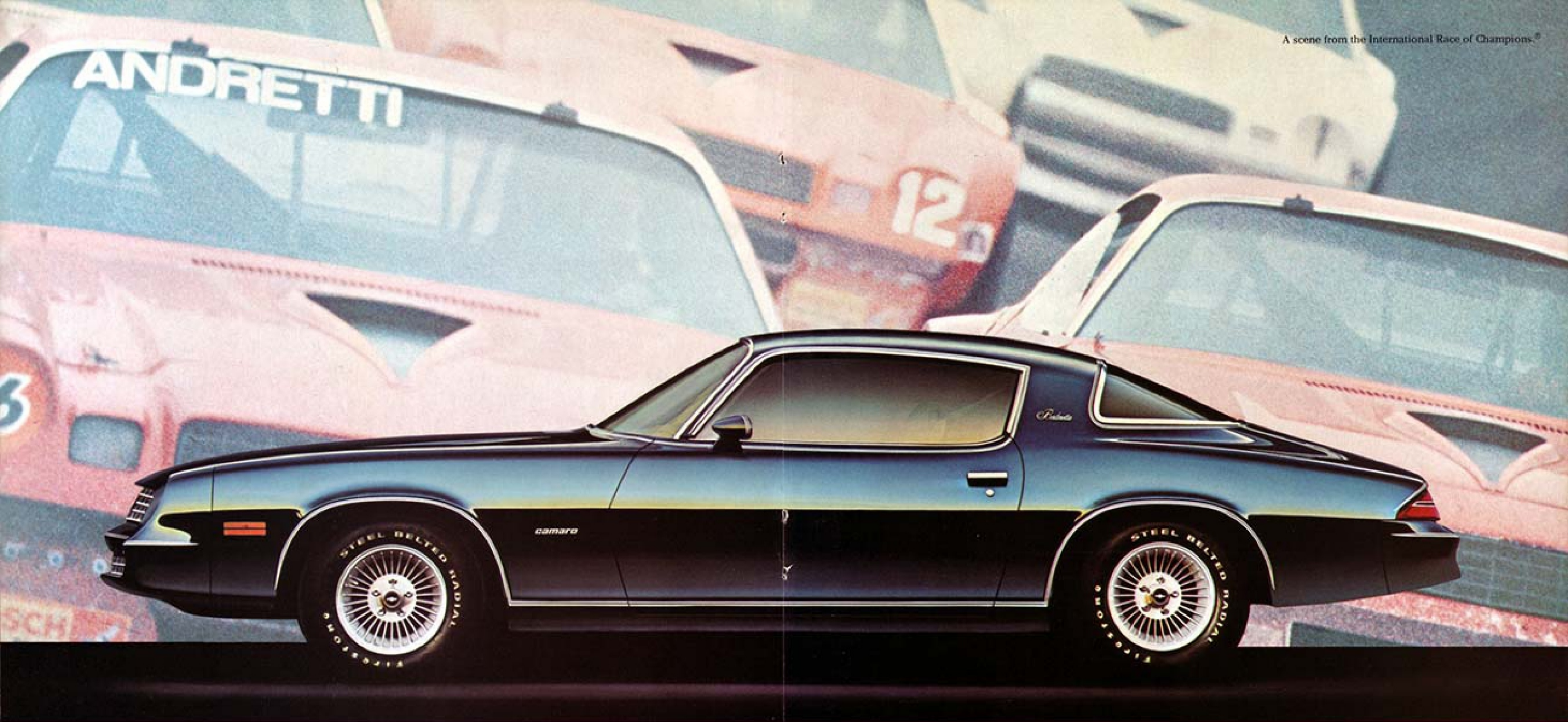
1979 CAMARO POWER TEAMS

Engine	Option Code	Power Rating*	CID	Engine Availability		Transmission Availability				
				All Models Except Z28	Z28 Only	Three-Speed Manual RPO M03	Four-Speed Manual RPO M04	Four-Speed Close-Ratio Manual RPO M01	Auto-matic RPO M02	
ALL STATES EXCEPT CALIFORNIA (with Standard Emission System - RPO N45)										
4.1 Litre 1-801 LS (A)	L22	115	250	Std.	NA	Std.	NA	NA	EC	
5.0 Litre 2-801 VS (B)	LG3	130	305	EC (3)	NA	NA	EC	NA	EC	
5.7 Litre 4-801 VS (B)	LM1	170	300	EC (3)	NA	NA	EC	NA	EC	
5.7 Litre 4-801 VS (B)	LM1	175	300	NA	Std.	NA	NA	Std.	EC	
ALL STATES EXCEPT CALIFORNIA (with High Altitude Emission Equipment - RPO N46)										
5.7 Litre 4-801 VS (B)	LM1	165	300	EC (3)	NA	NA	NA	NA	EC	
CALIFORNIA ONLY (with California Emission Requirements - RPO Y75)										
4.1 Litre 1-801 LS (A)	L22	90	250	Std.	NA	NA	NA	NA	EC	
5.0 Litre 2-801 VS (B)	LG3	125	305	EC (3)	NA	NA	NA	NA	EC	
5.7 Litre 4-801 VS (B)	LM1	165	300	EC (3)	NA	NA	NA	NA	EC	
5.7 Litre 4-801 VS (B)	LM1	170	300	NA	Std.	NA	NA	NA	EC	

*S.A.E. net horsepower as installed. Std. - Standard. NA - Not Available. EC - Available at extra cost.
 (1) With floor-mounted shift control. (2) Floor console (RPO 066) required. (3) Power brakes (RPO J60) required.
 (A) PRODUCED BY GM - CHEVROLET MOTOR DIV.
 (B) PRODUCED BY GM - CHEVROLET MOTOR DIV. AND GM OF CANADA.

Camaros are equipped with GM-built engines produced by various divisions. See your dealer for details.





1979 CAMARO BERLINETTA. A NEW WAY TO TAKE YOUR PULSE.

Some will call it smooth. Quieter. More sophisticated than Camaros past.

We call this special new Camaro the Berlinetta. And it's all of those things. Yet the Berlinetta remains a Camaro at heart. It's still a "hugger."

Berlinetta. It will be known for its interior comforts and smooth, responsive ride. It comes equipped with a special insulation package that helps screen out engine, wind, and road noise. With front spring isolators, new body mounts and special shock absorbers, Berlinetta's special suspension system has a way of making old roads seem new.



Inside, Berlinetta is plush and perfect. Newly designed front bucket seats support you comfortably and firmly. And as you've come to expect from other special Camaros such as Z28, Berlinetta instrumentation is recessed and easy to read. Included are tachometer, voltmeter, temperature gage, and an electric clock.

Berlinetta will also be known for its impressive looks. There's a distinguished grille treatment and dual body stripes, blackened rocker panels and distinctive nameplates, front, rear, and side, to set it apart from other Camaros. Like all Camaros, though, you'll realize that Berlinetta is also a "hugger" by the way it holds the road.

So, if you're looking for a Camaro with more than a "touch" of class, see your local Chevy dealer. He'll be glad to show you a new way to take your pulse.

Available white-lettered tires are supplied by various manufacturers.





1979 MONZA SPYDER. TAKE IT TO THE LIMIT.

You're out on the test track.

You move out in a new Chevy Monza Spyder.

Now you're heading for the bank. You're up.

Pressing the pavement. Having the time of your life.

Then you realize you're not driving just a run-of-the-mill sporty car. It's something special. It's a Monza Spyder by Chevrolet.

Standard on this year's Monza you get tinted glass windows, a Delco AM radio, center console, Sport steering wheel and body side moldings.

What's more, with the Spyder packages you'll also get steel-belted radials, Sport suspension, day/night rearview mirror, front air dam, rear spoiler, Rally II wheels, sport mirrors—and more. Plus, you get your choice of standard 4, or optional V6 or V8 engine. Monza Spyder is equipped with GM-built engines

produced by various divisions. See your dealer for details.

The new Chevy Monza Spyder. Take it to the limit.

Available white-lettered tires are supplied by various manufacturers.

1979 MONZA POWER TEAMS	Engine	Ordering Code	Power Rating*	C.I.D.	Engine Availability		Transmission Availability		
					All Models except Sta. Wgn.	Station Wagon	Four-Speed Manual (1)	Five-Speed Manual (1)	Automatic (2)
ALL STATES EXCEPT CALIFORNIA (with Standard Emission System - RPO N45)									
	2.5 Line 2-801 L4 (A)	LX8	90	151	Std.	Std.	Std.	EC	EC
	3.2 Line 2-801 V6 (B)	LC9	105	196	EC	EC	Std.	EC	EC
	5.0 Line 2-801 V8 (C)	LG3	130	305	EC	NA	Std.	NA	EC
ALL STATES EXCEPT CALIFORNIA (with High Altitude Emission Equipment - RPO N46)									
	3.8 Line 2-801 V6 (B)	L05	115	231	EC	EC	NA	NA	EC
CALIFORNIA ONLY (with California Emission Requirements - RPO YF5)									
	2.5 Line 2-801 L4 (A)	L56 L58†	85	151	Std.	Std. (3)	Std.	NA	EC
	3.8 Line 2-801 V6 (B)	L05	115	231	EC	EC	Std.	EC	EC
	5.0 Line 2-801 V8 (C)	LG3**	125	305	EC	NA	NA	NA	EC

*S.A.E. net horsepower as installed. Std. - Standard. NA - Not Available. EC - Available at extra cost.
 † 1.56 to replace 1.56 after January 1979. See dealer for details.
 ** Available at Announcement with Spyder equipment. See dealer for availability on other models.
 (1) With floor-mounted shift control. (2) With console-mounted shift control. (3) Special instrumentation (RPO U14) required.
 (A) PRODUCED BY GM - PONTIAC MOTOR DIV.
 (B) PRODUCED BY GM - BUICK MOTOR DIV.
 (C) PRODUCED BY GM - CHEVROLET MOTOR DIV. AND GM OF CANADA.

1979 CORVETTE. THE ONE AND ONLY.

What can you say about the Corvette legend? It all began 26 years ago, when the first Corvette was driven off the assembly line. And it remains today as America's only true production sports car. A car that is awesomely competent. And for 1979, the legend lives on.

This year, Corvette engineers and designers continue to refine one of the world's impressively responsive cars, blending styling and engineering to give you touring comfort and driver convenience. New flatter-folding bucket seats, for example, endow Corvette with a more practical carrying capacity. New dual-snorkel air induction air cleaner, new anti-theft steering column ignition lock, and standard Delco AM/FM radio help to make it one of the world's well-equipped cars.

It's not hard to understand why Corvette is such a legendary car. Since 1953 it has offered the fulfillment of a never-ending dream. And for that reason, it is truly the one and only. Corvette.

White-lettered tires are supplied by various manufacturers.

1979 CORVETTE POWER TEAMS	Engine	Ordering Code	Power Rating*	C.I.D.	Engine Availability	Transmission Availability		
						Four-Speed Manual RPO M10 (1)	Four-Speed Close Ratio Manual RPO M21 (1)	Automatic RPO M11 (1)
ALL STATES EXCEPT CALIFORNIA (with Standard Emission System - RPO N45)								
	5.7 Line 4-801 V8 (A)	L48	195	350	Std.	Std.	NA	(2)
	5.7 Line 4-801 V8 (A)	L82	225	350	EC	Std.	(2)	(2)
ALL STATES EXCEPT CALIFORNIA (with High Altitude Emission Equipment - RPO N46)								
	5.7 Line 4-801 V8 (A)	L48	195	350	Std.	NA	NA	Std.
CALIFORNIA ONLY (with California Emission Requirements - RPO YF5)								
	5.7 Line 4-801 V8 (A)	L48	195	350	Std.	NA	NA	Std.

*S.A.E. net horsepower as installed. Std. - Standard. NA - Not Available. EC - Available at extra cost.
 (1) With console-mounted shift control.
 (2) Available in place of standard four-speed manual transmission at no extra cost.
 (A) PRODUCED BY GM - CHEVROLET MOTOR DIV.



1979 EL CAMINO ROYAL KNIGHT

It's a car.

It's a truck.

It's the El Camino Royal Knight. An exciting combination of sporty looks and functional design. Royal Knight comes equipped with such appearance features as a large front air dam, sport mirrors, Rally wheels, and a special striping and decal treatment.

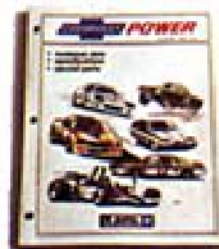
Outside, it's a hardworking carrier with 35.5 cubic feet of ribbed steel cargo space and a pickup box payload of 800 lbs. Inside, you'll find the comfort and luxury you would expect to get in a passenger car.

So, if it's a truck you need but a car you want, you owe it to yourself to look into the El Camino Royal Knight.

SEND FOR YOUR COPY OF CHEVROLET POWER

Chevrolet Power is a book filled with technical data on Chevrolet vehicle dynamics, chassis and engines. Included in the book are blueprinting procedures, lists of special parts available through Chevy dealers, and step-by-step instructions for "off-highway" engine modification.

Chevrolet Power is not a book for amateurs. It is strictly for people who know what Chevrolet performance can be. And it comes to you from people who know what performance is all about.



RT

Please ship me _____ copies of *Chevrolet Power* @ \$5.95 plus 70¢ handling, for a total of \$6.65 per book.

Total amount enclosed \$_____. (Michigan residents add 4% sales tax.) Make check or money order payable to: *Chevrolet Power Book* and mail to:

P.O. Box 117
Warren, MI 48090

Name _____

Address _____

City _____ State _____ Zip _____

Offer expires April 30, 1979. Please allow 30 days for delivery.