

# GET THE 4RUNNER FEELING!

## BUCKLE UP...IT'S A GOOD FEELING!

- Safety experts say "Buckle up!" Here's why:
  - Generally the safest place in a collision is inside your vehicle. Seat belts can help keep you there.
  - Small children should be provided with a child restraint system dynamically tested to meet federal standards. Select such a restraint system carefully.

restraint system carefully.

The seat belts in the 1985 Toyota 4Runners are designed to meet or exceed all government requirements, and engineer for maximum comfort.

Familiarize yourself with the operation of your Toyota seat belts, and remember: buckle up...it's a good feeling!

## QUALITY PARTS & SERVICE

Every new 4Runner is built to stringent quality standards and is covered by Toyota's 2-year/24,000-mile limited powertrain warranty.\* Nearly 1100 Toyota dealers nationwide can help you keep that Toyota feeling.

\*See your Toyota dealer for details.

# TOYOTA

# T O Y O T A 4 R U N N E R

## FEATURES

	4RUNNER SRS	4RUNNER
S—Standard O—Optional —Not Available		
<b>MECHANICAL</b>		
24 liter 4-cylinder SOHC engine	S	S
Electronic fuel injection	S	S
Fully transistorized ignition	S	S
3-speed overdrive transmission	S	S
Speed transfer case	S	S
Power-assisted brakes (front disc/rear drum with rear load-sensing proportioning valve)	S	S
Steel fald plates under transfer case and fuel tank	S	S
Propped steel front tow hook	S	S
Two-wheeling locking front hubs	S	S
Fab box frame	S	S
<b>EXTERIOR</b>		
Steel hub wheels	—	S
Color-keyed spoke wheels	S	—
Steel-belted all-weather P225/75R15 radial tires	O	S
Chrome Package—chrome front fender towing bumpers, grille, trim, wheels, RR, radial tires	O	—
Anti-rattle protectors	S	S
Tungsten halogen headlights	S	—
Dual spot/turned outside mirrors with side-view passenger-side convex mirror	S	S
Stainwooded with removable sunshade	O	—
Front and rear mud guards	S	S
Lockable one-touch tailgate release	S	S
Rear bumper	S	S
Removable rear top	S	S
Power rear window	S	S
Rear window wiper/washer and electric rear window defogger	S	O*
Two-tone paint	O	—
<b>INTERIOR</b>		
Tachometer, oil pressure, voltmeter and coolant temperature gauges	S	S†
Inclinometer/altnmeter	S	—
Power steering	S	O
Tilt steering wheel and adjustable intermittent wipers	S	O
Power Package—power windows, Cruise Control, power antenna and courtesy lamp group	O	—
Power-boosted F16 thru ventilation	S	S
Air conditioning (blend air type)	O	O
Rear heater controls and ducts	S	—
Steering column-mounted headlight and wiper/twin-stream washer controls	S	S
Misc. cycle wipers/twin-stream washer	—	S
Digital quartz clock	S	O
Reclining low-back bucket seats with adjustable headrests and center console	S	S
Sport Seats with drivers side 7-way adjustments	O	—
Passenger-side seat walk-in device	S	—
Rear seat inside door release	S	S
Passenger-side cargo access release	—	S
Fold-down right rear seatbacks	S	—
Cloth seat trim	S	O
Vinyl seat trim	S	S
Semi-padded steel roll bar in rear	S	S†
Dual rear storage compartments	S	S
Tinted glass with resistor-shaded windshield band	S	O†
Vented front windows	S†	—
Tinted sliding side glass windows	S	S
Fall protective—front and rear	S	O
Carpeted floor mats	S	O
Rubber floor mats	—	O
AM/FM/MPX stereo receiver	S	O
AM/FM/MPX stereo receiver with cassette	O	O
Electronic AM/FM/MPX tuner with 4 speakers, cassette and 7-band graphic equalizer	O	—
Without defogger †Coolant temperature gauge only †Non-padded †Requires cloth interior †Not available with Power Package		

## SPECIFICATIONS

<b>ENGINE TYPE</b>	4-cylinder SOHC EFI	
<b>DISPLACEMENT</b>	24 liters (2366 cc)	
<b>HORSEPOWER (SAE NET)</b>	116 @ 4800 rpm	
<b>TORQUE (SAE NET)</b>	169 lb-ft @ 2600 rpm	
<b>BODY FRAME CONSTRUCTION</b>	Welded steel cab	
<b>SUSPENSION FRONT</b>	Leaf springs with hydraulic shock absorbers and stabilizer bar	
<b>SUSPENSION REAR</b>	Leaf springs with staggered hydraulic shock absorbers	
<b>STEERING TYPE</b>	Recirculating ball	
<b>TURNING CIRCLE DIAMETER</b>	36.1 ft.	
<b>BRAKES</b>	Power-assisted front disc/rear drum with rear load-sensing proportioning valve	
	<b>4RUNNER SRS</b>	<b>4RUNNER</b>
<b>EXTERIOR DIMENSIONS (inches)</b>		
Wheelbase	103.0	103.0
Front width (inset)	54.3	55.9
(inset)	51.5	53.1
Overall length	174.6	174.6
Overall width	66.3	66.3
Overall height	66.1	66.1
Cargo bed length	79.5	79.3
<b>INTERIOR DIMENSIONS (inches)</b>		
Head room (inset) Driver-Side/Passenger-Side	39.2/39.0	39.2/39.0
(inset)	37.8	N.A.
(inset)	41.5	N.A.
Leg room (inset) Driver-Side/Passenger-Side	32.8/34.3	N.A.
<b>AXLE RATIOS</b>		
Front	4.100:1	4.100:1
Rear	4.100:1	4.100:1
<b>2-SPEED TRANSFER CASE</b>		
Gear ratios	High 1.000	High 1.000
	Low 2.276	Low 2.276
<b>GROUND CLEARANCE</b>		
Angle of approach	37°	37°
Angle of departure	22.5°	22.5°
Differential system to ground	7.7°	7.7°
Minimum running ground clearance	10.6"	10.6"
<b>CAPACITIES</b>		
Gross vehicle weight (lbs.)	4800	4800
Maximum cargo load (not including passengers)	300	300
Cargo volume (cu. ft.)	60.9	60.9
Fuel tank capacity (gallons)	17.2	17.8
<b>TIRES</b>		
Type	All-Weather steel-belted radial P225/75R15	All-Weather steel-belted radial Blackwall P225/75R15
Size		
<b>EXTERIOR COLORS†</b>	<b>INTERIOR COLORS†</b>	
<b>Solid</b>	<b>Two-Tone</b>	<b>Two-Tone</b>
White (Gray or Brown)	Black or White	Black or White
Red (Brown)	Bright Gold (Brown)	White/Right Gold Metallic (Brown)
Black or White	Dark Gray (Gray)	Black or White Gold Metallic (Brown)
Medium Blue (Blue)	Black or White	
Creme (Brown)	Black or White	
Gloss Black (Gray)	Black	
<b>MILEAGE ESTIMATES*</b>		
	5-speed	4-speed
	Quadrifone	Quadrifone
	22.7	22.7
<b>CITY MPG/HWY MPG</b>		

N.A.—Not Applicable. †Not all colors available in all models. ‡White optional except on Dark Gray Metallic and Gloss Black. Toyota 4WD vehicles are designed to meet off-road driving requirements. Abusive use may result in bodily harm or damage. We encourage responsible operation to protect your vehicle and the environment.

\*Remember, compare these mileage estimates to the EPA estimates of other vehicles. Actual mileage will vary depending upon the vehicles options, driving conditions, driving habits and the vehicles condition.

Specifications and equipment based on information available at time of printing and are subject to change without notice. Cover vehicle and others shown with optional equipment; see Features chart. For details on options, accessories and specifications in your area, contact your Toyota dealer. See 1985 Toyota Accessories brochure for additional Toyota-approved accessories.



# SPIRITED ADVENTURER

The Toyota 4Runner is a new kind of sport utility vehicle. With its interior comfort, rugged 4-wheel drive performance, and aggressive styling, 4Runner moves from outdoor tracks to city streets with ease.

The high-torque 24 liter SOHC engine with 116 horsepower and Electronic Fuel Injection is the most powerful of any small

sport utility vehicle. Couple this with an efficient 5-speed overdrive transmission, and you've got plenty of power for off-road running. Economical operation\* and a 17.2-gallon gas tank give 4Runner SR5 an extended cruising range for both highway and high-country touring.

Toyota's 4-wheel drive engineering is

proven dependable, proven tough. The sure-footed traction of 4-wheel drive, combined with the highest minimum running ground clearance of any small sport utility vehicle, makes the 4Runner a leader in off-road excitement.

The 4Runner has a forged-steel front tow hook and steel skid plates under the fuel tank

and transfer case. There's also a rugged steel roll bar, semi-padded on the SR5.

The 4Runner SR5 has roomy, comfortable seating for five. A passenger seat walk-in device makes rear seat access and exit easy. You'll find lots of cargo space to hold all sorts of gear and equipment, too. Split rear seatbacks can be folded flat, providing

over 6½ feet of room.

With its many convenience features, the 4Runner gets you across rough terrain in comfort. Its protective rear top is removable, to let in the sunshine. A power-operated rear window is standard. For ultimate convenience, 4Runner SR5 has a rear window defogger, and offers a Power Package that

includes Cruise Control, power door windows, and more.

When the spirit of adventure moves you, move out in the 1985 Toyota 4Runner. It can chase down your wildest dreams.

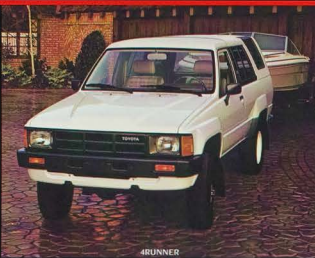
\*See EPA mileage statement on back cover. Shown with optional equipment. See Features chart on back cover for details.



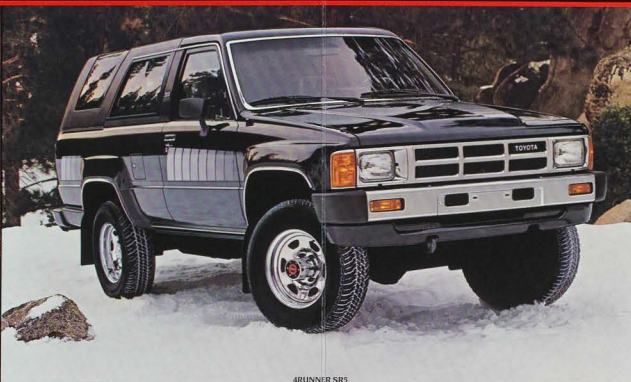
SR5 FULL INSTRUMENTATION

CRUISE CONTROL

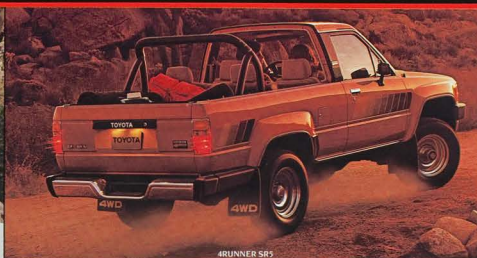
POWER STEERING WITH TILT WHEEL



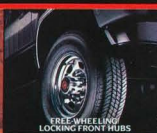
4RUNNER



4RUNNER SR5



4RUNNER SR5



FREE WHEELING  
LOCKING FRONT HUBS

## 4RUNNING EVERYWHERE

There's a removable rear top for running in sunshine, and free-rotating Easy Front Hubs to help get you through the roughest terrain.

**DRIVING EASE**  
Power steering, tilt wheel, and full instrumentation are standard on 4Runner SR5. Optional Power Package offers power door windows, Cruise Control, power antenna, and convenience lamp group.



POWER REAR WINDOW WITH WIPER



VERSATILE CARGO SPACE

## CONVENIENCE FEATURES

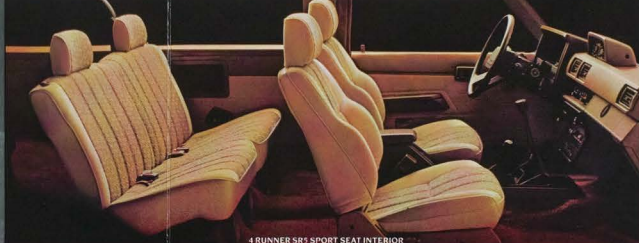
4Runner models have power operated rear window standard, and an available rear window wiper/washer. On 4Runner SR5, you'll find a rear window defogger as standard equipment.



REAR WINDOW DEFOGGER



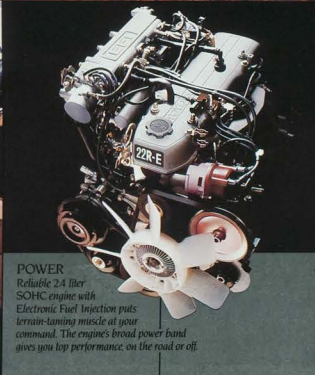
7-WAY ADJUSTABLE DRIVER'S SPORT SEAT



4RUNNER SR5 SPORT SEAT INTERIOR



ELECTRONIC FUEL INJECTION



**POWER**  
Reliable 24 liter SOHC engine with Electronic Fuel Injection puts terrain-taming muscle at your command. The engine's broad power band gives you top performance, on the road or off.

# FEATURES & OPTIONS

## ROOM AND COMFORT

There's plenty of room for five people and their gear in 4Runner SR5. The interior is fully carpeted. Front bucket seats recline. Split rear seatbacks fold down to make a spacious cargo area.