

TOYOTA CARS & TRUCKS



OH  
WHAT  
A  
FEELING  
**TOYOTA**

# WHAT'S NEW IN 1985

For 1985, Toyota offers you a broader range of models to choose from than ever before. There's also more excitement than ever before: Corolla GT-S gets a potent 1.6 liter Twin Cam 16-valve engine. Cressida, Toyota's

ultimate luxury car, is all new with such advanced features as a state-of-the-art Technics® sound system. The sporty Celica GT-S is joined by the dramatic new Toyota GT-S Convertible.

Toyota gives you a selec-

tion of 19 truck models, including the new 1 Ton, 4x4, SR5 Sport, Xtracab, and Long Bed Trucks. Whether for work or play, there's a Toyota truck that's right for the job.

Best of all, every Toyota is designed to last, with built-in

quality, dependability, performance, and comfort.

Efficient design, advanced technology, quality materials, and expert craftsmanship assure you that the Toyota you select is a wise choice. Best of all, Toyotas

are already complete; you'll find that the features you want most are standard—and, at a satisfyingly affordable sticker price. Whether you're choosing a comfortable sedan, roomy wagon, versatile liftback, high-per-

formance road car, rugged truck or unique van, you'll find that perfect choice in the broad lineup of 1985 Toyota cars and trucks.

\*Technics is a trademark of the Matsushita Electric Industrial Co., LTD.  
Shown with optional equipment.



COROLLA GT-S SPORT LIFTBACK



COROLLA GT-S TC-16 ENGINE



CRESSIDA LUXURY SEDAN



T E C H N I C S



CRESSIDA SPEAKER LOCATIONS

## HOT PERFORMANCE

Experience high-performance driving in the affordably priced Corolla GT-S Sport Liftback with the TC-16, a 1.6 liter Twin Cam 16-valve engine that redlines at 7500 rpm.



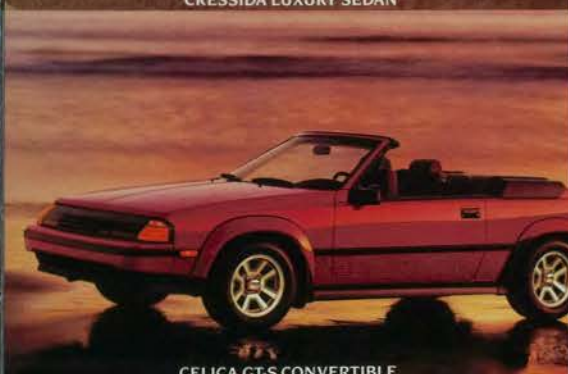
4x4 SR5 XTRACAB SPORT TRUCK

## POWERFUL PERFORMER

The 4x4 SR5 Xtracab Sport Truck is a tough performer that offers a smooth ride and easy handling, on or off the road. A 2.4 liter SOHC electronically fuel-injected engine produces 116 hp, the most of any small truck.



ELECTRONIC FUEL INJECTION



CELICA GT-S CONVERTIBLE

## LUXURY & PERFORMANCE

With elegant luxury, Twin Cam performance, and all-new aerodynamic styling, Cressida is truly a world-class luxury touring sedan.

A state-of-the-art Technics electronic tuning AM/FM/MPX stereo with integral cassette player, 9-band graphic equalizer and four speakers enhances Cressida's luxurious environment.



CELICA GT-S CONVERTIBLE POWER TOP

## FUN IN THE SUN

The Celica GT-S Convertible—all the features, comforts, and performance of the GT-S, with the sporty fun of a convertible.

# CRESSIDA

The all-new Cressida Luxury Sedan for 1985 is Toyota's most refined combination of luxury, performance, and style. Its smooth 2.8 liter 6-cylinder electronically fuel-injected Twin Cam engine

puts 156 horses at the driver's command. This powerful engine is combined with Toyota's Electronically Controlled 4-speed automatic overdrive transmission with lock-up torque converter for

a smooth driving experience. Cressida envelops you in a luxurious interior, with deeply cushioned, richly upholstered seats. A Satellite Switch Group is mounted just to the right of

the steering column at eye level for fingertip control of audio and climate systems. A second Satellite Switch Group to the left of the wheel houses the outside power mirror controls, hazard warn-

ing switch, and outside mirror defogger control. Standard features include a Technics sound system, Speed Sensing power steering, Cruise Control, power windows and door locks, and

automatic temperature control air conditioning to ensure a comfortable environment and let you take control of luxury in motion. Shown with optional equipment. See your Toyota dealer for details.



## BRILLIANT SOUND

A Technics electronic tuning AM/FM/MPX stereo with integral cassette player and 9-band graphic equalizer provides exceptional concert hall sound from its four high-performance speakers.



CRESSIDA LUXURY SEDAN



LEATHER INTERIOR

## ULTRA-COMFORTABLE DESIGN

Optional glove-soft leather graces Cressida Sedan's comfortable interior. The 7-way adjustable driver's seat has a 2-way vertical seat adjuster and 3-way lumbar support adjustment for driver comfort.



CRESSIDA LUXURY WAGON

**SPACIOUS LUXURY**  
The Cressida Luxury Wagon stands out as a unique combination of versatility and luxury, offering 70.2 cubic feet of carpeted cargo area for your convenience.



CRESSIDA LUXURY SEDAN



2.8 LITER TWIN CAM ENGINE



ELECTRONIC DISPLAY INSTRUMENT PANEL

# COROLLA

Corolla is one of the world's most popular cars. And no wonder. The no-compromise advanced designs provide comfort, convenience and fun-to-drive sportiness without sacrificing Corollas

well-earned reputation for affordability, low operating cost, and reliability.

The front-wheel drive 4-Door Sedan and 5-Door Liftback models, with interior comfort for five adults, offer

a first-class combination of economy\* and reliability. Choose from a responsive 1.6 liter gasoline engine or fuel-efficient 1.8 liter diesel engine.

The new Corolla GFS Sport Liftback and Coupe

with the new TC-16 16-valve Twin Cam engine and Electronic Fuel Injection, give you 112 hp—60% more than before—and high-revving, aggressive performance. The Corolla GFS and SR5 Sport

Liftbacks and Sport Coupes with their sleek aerodynamic styling are a unique combination of sporty-car excitement, balanced handling, and affordability.

The 1985 Corollas: they're

value-packed with more of what it takes to answer today's driving needs.

\*See EPA mileage statement on inside back cover. Shown with optional equipment. See your Toyota dealer for details.



COROLLA 4-DOOR LE SEDAN



COROLLA LE LIMITED SEDAN INTERIOR

## COMFORTABLE AND ROOMY

The Corolla 4-Door LE Limited Sedan with plush cloth interior provides maximum room and comfort, with Toyota dependability and value built in.



COROLLA 4-DOOR LE LIMITED SEDAN

## CONVENIENT CHOICE

The front-wheel drive Corollas include the specially outfitted 4-Door LE Limited Sedan, the LE Sedan and Liftback, Deluxe Sedan and Liftback—including new diesel models. All feature traditional Toyota reliability in a roomy, family-size package.



COROLLA DELUXE DIESEL SEDAN AND DELUXE LIFTBACK



COROLLA GT-S SPORT LIFTBACK



COROLLA GT-S SPORT INTERIOR



GT-S TC 16 TWIN CAM ENGINE

## HOT PERFORMANCE

Within the Corolla GT-S Sport models you'll experience a powerful 16-valve Twin Cam engine that puts 112 hp to work at your command, with a driver's environment to match.



COROLLA SR5 SPORT COUPE

## FUN-TO-DRIVE SPORT

The SR5 Sport Coupe and Liftback combine sporty-car excitement and affordability.

# TERCEL

Tercel sets the standard for economy. The 1985 Tercel is Toyota's lowest-priced car,\* delivering outstanding gas mileage\*\* and the roomiest interior of any subcompact!

Tercel's 1.5 liter SOHC engine is designed to help give you trouble-free perfor-

mance for years to come. Equipped with the all-weather traction of front-wheel drive and a wide, stable stance, the Tercel offers outstanding handling.

Whichever you choose—3-Door or 5-Door Liftback, front-wheel drive or 4-wheel

drive Wagon—they all have that built-in Toyota quality.

\*Based on manufacturer's suggested retail price. Actual retail price may vary.

\*\*See EPA mileage statement on inside back cover.

†Subcompact car class as defined by EPA.

Shown with optional equipment. See your Toyota dealer for details.



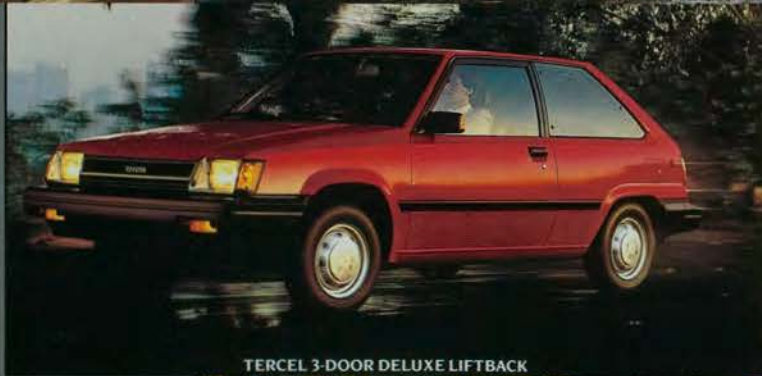
TERCEL DELUXE CONVENIENCE PACKAGE INTERIOR



TERCEL 3-DOOR DELUXE AND 3-DOOR LIFTBACKS

## ECONOMY IN STYLE

The Tercel Liftbacks—3-Door, 3-Door Deluxe and 5-Door Deluxe models—combine good looks and great gas mileage.



TERCEL 3-DOOR DELUXE LIFTBACK

## ALL-WEATHER TRACTION

On-command 4WD keeps Tercel Wagons going through mud, snow and ice.\* Simply pull the shift lever to go from front-wheel drive to 4-wheel drive without stopping.

\*For rough-road use, installation of the optional Chassis Gravel Shields is recommended.



TERCEL 4WD SR5 WAGON

# CELICA

The pacesetter for sleek, sporty-car value, the 1985 Celica combines striking style, electronically fuel-injected performance, and responsive handling for driving excitement.

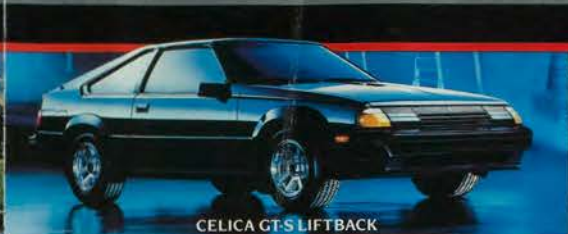
Choose from the GTS Liftback or Sport Coupe, the

brand-new GTS Convertible for fun in the sun, the GT Sport Coupe or Liftback, or the ST Sport Coupe.

Aerodynamic styling, coupled with the power of a 2.4 liter electronically fuel-injected SOHC engine and a close-ratio 5-speed overdrive

transmission, contributes to Celica's performance and spirit. Inside as well as out, the standard features offered by Celica add up to real comfort, convenience and traditional Celica value.

Shown with optional equipment. See your Toyota dealer for details.



CELICA GT-S LIFTBACK



CELICA GT-S LEATHER SPORT SEAT INTERIOR

## DRIVERS ENVIRONMENT

The Celica GT-S is designed for maximum driver control. Full instrumentation, 8-way adjustable driver's Sport Seat and 5-speaker stereo system\* are standard.

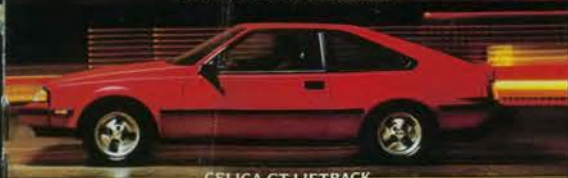
\*With cassette equalizer on GTS Convertible.



CELICA GT-S CONVERTIBLE

## EXCITEMENT PLUS

The Celica GT-S Convertible—all the features, comfort, and performance of the GT-S, with the open-air thrill of a quality-crafted convertible.



CELICA GT LIFTBACK



CELICA ST & GT SPORT COUPES

# CAMRY

The 1985 Camry provides maximum interior room for five adults, and better gas mileage\* than many smaller economy cars, due to its innovative design and advanced Toyota engineering.

Contemporarily styled, Camry has front-wheel drive

for exceptional roadworthiness and superior traction. Its lively acceleration and smooth performance at highway speeds is provided by a 2.0 liter SOHC electronically fuel-injected engine.

Camry Liftback and Sedan are available in LE or Deluxe

models; a Deluxe Turbo-Diesel Sedan is also available.

Whatever your driving needs, the 1985 family Camry is sure to fulfill them.

\*See EPA mileage statement on inside back cover. Shown with optional equipment. See your Toyota dealer for details.

# SUPRA

The high-performance 1985 Supra holds its own with the world's elite GT cars. Its 2.8 liter 6-cylinder electronically fuel-injected Twin Cam engine coupled with a 5-speed overdrive or 4-speed automatic overdrive transmission\* is truly hot on performance.

The Supra gives you the satisfaction of superior road-handling agility as a result of its variable assist power rack-and-pinion steering, 4-wheel independent suspension, and more. Superb comfort, an 8-way adjustable driver's Sport Seat, and full instru-

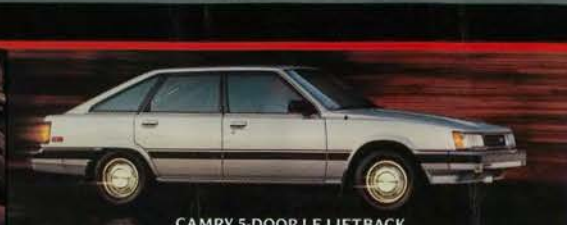
mentation are all part of the Supra mystique.

Whether you choose the Supra or the Supra L-Type, the world of high-performance driving is all yours.

\*Depending on model selected. Shown with optional equipment. See your Toyota dealer for details.



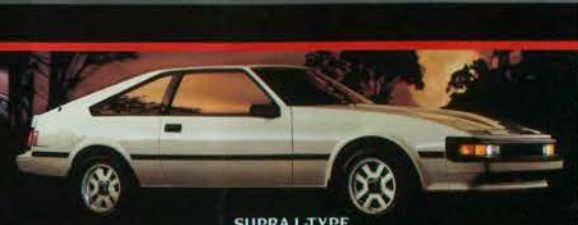
CAMRY LE SEDAN INTERIOR



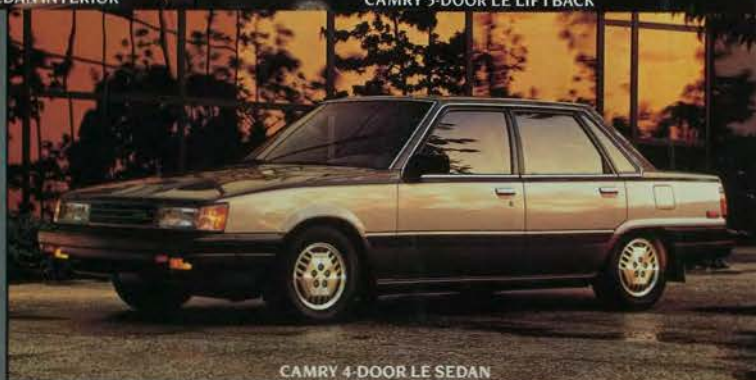
CAMRY 5-DOOR LE LIFTBACK



SUPRA LEATHER SPORT SEAT INTERIOR



SUPRA L-TYPE



CAMRY 4-DOOR LE SEDAN

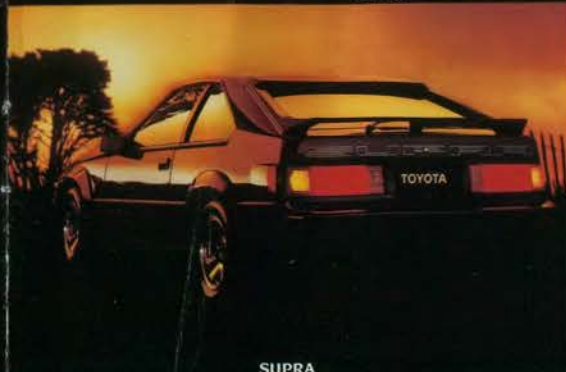


SUPRA

**ROOM FOR ALL**  
Designed for maximum room and comfort, Camry provides comfortable, deep-cushioned seating for five adults plus convenient storage areas and a large cargo space.



CAMRY 4-DOOR LE SEDAN



SUPRA

## HIGH-PERFORMANCE ENVIRONMENT

From its 8-way adjustable driver's Sport Seat, full instrumentation, and optional leather interior, to its superb roadability, Supra satisfies the most discriminating driver.

# TOYOTA TRUCKS

Toyota offers you more truck choices for work or play than anyone. Take your pick from 19 technologically advanced models. You'll find a truck that's just right: extra-roomy Xtracabs, sleek SR5 Sport Trucks, rugged 4x4s.

the new 1 Ton Truck with the most payload of any small truck, two Cab/Chassis models, and the Cargo Van.

With Toyota Trucks you get advanced gas-fueled and efficient diesel-fueled powerplants\*—including

the all-new Turbo-Diesels\* Toyota's dependable 2.4 liter gasoline engine with Electronic Fuel Injection provides 116 hp—more than any small truck. Toyota offers a variety of rugged transmissions: 4-speed manual, 5-speed

overdrive and innovative, optional 4-speed automatic overdrive.

The uniquely styled Xtracab Trucks give you the most legroom of any small truck. Xtracab gives you real stretch-out legroom, head

room, and generous storage space behind the seats.

You'll also find such quality features as a full-box frame and, on most models, double-wall beds and Soft-Ride rear suspension.

Whether it's a sporty SR5,

hardworking Long Bed Deluxe, 1 Ton, Standard Bed, or fully-equipped off-road 4x4 Truck or 4Runner, the choice will be a tough one.

\*Not available in all areas. Shown with optional equipment. See your Toyota dealer for details.



STANDARD BED



4x4 SR5 XTRACAB SPORT SEAT INTERIOR



4x4 SR5 XTRACAB SPORT



4x4 SR5 LONG BED SPORT



LONG BED DIESEL DELUXE AND XTRACAB DELUXE

## OFF-ROAD RUGGED

With the highest running ground clearance of any small truck—a full 10.6 inches—the Toyota 4x4 is ready to ford streams or climb mountains.

## MORE POWER

Tough-working on the outside, comfortable inside, Toyota Standard Beds, Long Beds, Xtracabs, and 4x4s have more horsepower than ever.



SR5 XTRACAB SPORT



1 TON TRUCK AND COMMERCIAL CAB/CHASSIS

## CAPABLE WORKHORSE

The electronically fuel-injected 1 Ton's 2500 lb. payload\* with optional towing package lets you tow up to 5000 lbs.\*\* and its heavy-duty suspension allows for heavy-duty transport.

\*Including occupants, equipment, and cargo.  
\*\*Not to exceed combined Gross Vehicle Weight Rating of 8500 lbs.

## TOUGH AND ROOMY

4Runner's 2.4 liter EFI engine goes for the long haul, and 4Runner SR5 provides a comfortable interior for five. The split rear seatbacks fold down for more than 6½ feet of spacious cargo area.



4RUNNER SR5



CARGO VAN

## ECONOMY AND CAPACITY

The 1985 Toyota Cargo Van combines compact size with spacious interior capacity. It's nimble around town, and can handle your most diverse cargo needs.

# TOYOTA VANS

The Toyota Van combines the drivability, ride, and fuel economy\* of a passenger car, the roominess of a van, and the versatility and comfort of a station wagon.

With aerodynamic styling and flush surface design on the outside, Toyota Van seats

seven and has full carpeting on the inside for comfortable motoring.

A specially designed 2.0 liter EFI engine delivers brisk acceleration. Innovative design, exceptional steering response and handling, with a turning circle of only 30.2 feet, add to

the Toyota Van's appeal.

With unique options, such as a Cooler/Ice Maker and dual sunroofs for the LE model, this garageable vehicle is truly a Wonderwagon!

\*See EPA mileage statement on inside back cover. Shown with optional equipment. See your Toyota dealer for details.



VAN LE



VAN LE



CARGO SPACE WITH REAR SEAT REMOVED



CARGO SPACE WITH BOTH REAR SEATS REMOVED



VAN LE FRONT BUCKET SEATS

## VERSATILE SEATING

The driver's seat is adjustable and both front bucket seats recline. The middle seat folds down completely to combine with the rear seat into a bed-like platform.

## EASY ACCESS

A wide, smooth-sliding door gives easy access to middle and rear seats. Quick Release middle and rear seats remove easily, to provide 149.8 cubic feet of carpeted cargo space.



DELUXE VAN

## BUCKLE UP...IT'S A GOOD FEELING!

Toyota urges you to "Buckle Up" every time you drive. According to safety experts, generally the safest place to be in a collision is inside your vehicle. Seat belts can help keep you there. Properly adjusted, a seat belt can help the driver maintain better control of the vehicle. And because small children can be injured during sudden stops or quick turns, they should be provided with a child restraint system dynamically tested to meet federal standards.

Not only are Toyota seat belts designed to meet or exceed all government requirements, they are engineered to provide maximum comfort and easy use.

Toyota cars and trucks are equipped with various types of lap and shoulder belt systems which include front seat belts with Emergency Locking Retractors and/or Seat Belt Tension Reduction Systems, and rear outer seat belts with Automatic Locking Retractors.

Center rear seats have lap belts. In Toyota Cressidas, the innovative Automatic Shoulder Belt System's motorized front shoulder belts move to the proper wearing position when the doors are closed and the ignition switch is turned on.



All Toyota vehicles are designed to accept child restraint systems. For maximum safety, it is recommended that these systems be installed in the rear seat. (Follow manufacturer's recommendation for installation.)

Every time you drive, remember: Buckle up...it's a good feeling!

## QUALITY CARS, PARTS & SERVICE

All Toyotas are designed and built for customer satisfaction. That's why, in an independent owner survey<sup>1</sup> covering 25 major import and domestic one-year-old cars sold in America, Toyota owners reported less service and repairs needed, giving a higher level of satisfaction than any make except Mercedes-Benz.

Every Toyota car and truck is tested and inspected at every stage of manufacture, and is covered by Toyota's 2-year/

24000-mile limited powertrain warranty!<sup>1</sup>

Toyota dealer parts and service reflect the same quality and dependability you'll find in 1985 Toyotas. A computerized parts inventory control system helps assure availability of Genuine Toyota and Toyota-approved Parts at nearly 1100 dealers nationwide. Also, Toyota-trained service technicians use the latest equipment to care for your Toyota. That's why Toyota owners reported the lowest incidence of repairs and the best parts availability of any import or domestic make!<sup>1</sup>

You can count on Toyota dealers to help you keep that Toyota feeling.

<sup>1</sup>Source: J.D. Power & Associates Customer Satisfaction Survey, 1983.

<sup>2</sup>See your Toyota dealer for details.

\*EPA STATEMENT: Consult your Toyota dealer for EPA mileage figures. Remember, compare mileage estimates to the EPA estimates of other vehicles. Actual mileage will vary depending upon the vehicles options, driving conditions, driving habits and the vehicles condition.

Specifications and equipment based on available information at time of printing are subject to change without notice. Some cover vehicles and others shown with optional equipment. For information on additional options and accessories contact your Toyota dealer. See 1985 Toyota Accessories brochure for additional Toyota-approved accessories.