

#1 SELLING SMALL TRUCK

T O Y O T A T R U C K S



OH
WHAT
FEELING
TOYOTA

075-00 118P1-00001-0000 Long in U.S.A. 1800MG
© 1987 Toyota Motor Sales, U.S.A., Inc.

TOYOTA TRUCKS HAVE GOT IT ALL

You know what you want in a new truck. Now come and get it. Get great looks. Get power. Get rugged construction. Get the comfort you've been missing. Get the capacity you need. Get 1984's #1 selling small truck. Import or domestic. Get a 1985 Toyota Truck and get it all.

Toyota offers you more truck choices

for work or play. Choose from 20 technologically advanced models—extra-roomy Xtracabs, sleek SR5 Sport Trucks, rugged 4x4s, and the new 1 Ton Truck with the most payload capacity of any small truck—plus two new Cab/Chassis models.

Toyota gives you a wide choice of

advanced gasoline or diesel powerplants. Choose the turbocharged 24 liter electronically fuel-injected (EFI)* gas engine that cranks out an unbelievable 175 horse-power and get the most powerful engine in any small truck.

Get the transmission you want: depending on the model you choose, you can

have a smooth-shifting 5-speed over-drive** optional 4-speed automatic overdrive† or our brand-new Electronically Controlled 4-speed automatic overdrive, now available on Deluxe 4x4s, both Xtracabs and Long Beds, and standard on our new 4x2 gas-turbo SR5 Xtracab Sport Truck.

When it's time to cut loose and head out beyond the pavement, get behind the wheel of one of the seven 1985 Toyota 4x4 models, including the SR5 Xtracab Sport Truck. Toyota 4x4s tackle the tough stuff with the highest running ground clearance of any small truck.

The Toyota Xtracabs have more stretch-

out legroom than any small truck, too.

Whatever you want in a small truck, from trailblazing 4x4s to the hardworking 1 Ton Truck, you'll get it in a quality built Toyota—1984's #1 selling small truck.

*Available on select models. See Features chart.

**Speed manual transmission on some models. Show with optional equipment. See Features chart for details.



ELECTRONIC FUEL INJECTION



4x4 XTRACAB DELUXE TRUCK



4x4 ELECTRONICALLY CONTROLLED 4-SPEED AUTOMATIC TRANSMISSION



4x4 SR5 XTRACAB SPORT TRUCK

EXTRA ROOM, EXTRA ENJOYMENT

Climb aboard a new Toyota 4x4 SR5 Xtracab Sport Truck. Sit back. Settle in. Stretch out. Feel the room. There's more legroom inside a Toyota Xtracab than in any other small truck.

Want to take it with you? You can with a Toyota Xtracab. Inside it's got extra carrying space behind the reclining bucket seats,

with a removable cargo shelf. Load in the tools, sports gear, ice chest, the works.

The 4x4 SR5 Xtracab Sport makes driving on-road or off-road pure enjoyment. Body contoured reclining low-back bucket seats with striking sport-patterned cloth and full carpeting underfoot ensure extra comfort. And there's great sound from a

powerful AM/FM/MPX stereo receiver.

Need a place to stow maps and small items? You've got it! There are door pockets, a center console with covered twin storage compartments, and two large mesh pockets on the back wall.

To keep an eye on your 4x4's performance, you'll find full instrumentation with

speedometer, tachometer, oil pressure and voltmeter gauges. Power steering, a tilt steering wheel, column-mounted controls, variable speed windshield wipers, and a digital quartz clock are standard equipment.

Want more? Here's a full array of options: air conditioning, Sport Seats with drivers

side 7-way adjustments, a sun/moonroof with removable sunshade, a special Chrome Package, and an electronic AM/FM/MPX tuner with four speakers, cassette and a digital graphic equalizer.

There's a complete optional Power Package, too, which includes Cruise Control, power windows, electric rear window

defogger, ashtray light, inspection light, glove box light, and a headlight-on/ignition-off warning buzzer.

The Toyota 4x4 SR5 Xtracab Sport Truck. It's wilderness-wise and loaded with long-lasting value.

Shown with optional equipment. See Features chart for details.



4x4 SR5 XTRACAB SPORT SEAT INTERIOR

THE TERRAIN TAMERS

Take your choice, then take on the rough country with a 1985 Toyota 4x4 SR5 Xtracab Sport, SR5 Long Bed Sport, SR5 Sport, Xtracab Deluxe, Long Bed Deluxe, Long Bed Turbo-Diesel Deluxe or Toyota's most affordable 4x4, the Standard Bed. Whichever model you choose, get behind the wheel and you'll see the 1985 Toyota 4x4s

are the undisputed kings of the hill. If power is your thing, the Toyota 4x4 SR5 Sport is your truck. Its 24 liter SOHC electronically fuel-injected engine puts 116 horses, at your command, 16% more than last year's Toyota and the most of any small truck. With the SR5 Xtracab Sport and SR5 Long Bed Sport's large 193-gallon fuel tank,

you'll have impressive cruising range both on-road and off-road.

When the going gets tough, it's no sweat with a Toyota 4x4. Reach for the 2-speed transfer case. Shift into 4WD and those big P225/75R15 all-weather steel-belted radial tires take hold to pull you through mud, sand or snow. Drop into low-range 4WD

and you're ready to ride over rocks and ruts or ford streams with the highest running ground clearance of any small 4x4. And for extra off-road endurance, all Toyota 4x4s have heavy-duty steel skid plates to help protect the transfer case and fuel tank from damage in rough country.

On- or off-road, Toyota 4x4s handle easy

and ride smooth. The secrets in the suspension. Up front you'll find a proven solid front axle with leaf springs. In the back are tough, steel leaf springs combined with staggered-mount hydraulic shocks.

The power-assisted front disc/rear drum brakes are monitored by a load-sensing proportioning valve that helps keep the

braking properly balanced whether you're running empty or with a full load.

If going where the pavement doesn't is your goal, get a terrain-taming Toyota 4x4 Truck to get you there and back.

*Not available in California. Shown with optional equipment. See Features chart for details.



4WD GEARSHIFT



4x4 STANDARD BED TRUCK



4x4 SR5 LONG BED SPORT TRUCK

RUGGED AND READY

When the road runs out and the going gets tough, Toyota 4x4s keep on running. There's nothing like 4-wheel drive power and traction when you need it, and there's no better way to get it than in a Toyota 4x4. The 2-speed transfer case puts the power to the four all-weather steel-belted radial tires fast. With the transfer case selector in

low range, you can crawl over the rocks, ford streams and blaze your own trail.

The 1985 Toyota 4x4 SR5s have more horsepower than any small truck. Their muscular 2.4 liter SOHC engine with Electronic Fuel Injection (EFI) cranks out 116 horsepower. EFI constantly monitors the fuel/air mixture and meters the flow for full

power and maximum fuel efficiency.*

Toyota 4x4s ride smooth and handle with ease. Their suspension system features a proven, fully enclosed solid front axle with leaf springs, and rear suspension with staggered-mount shock absorbers for outstanding off-road stability.

For getting around and over nature's ob-

stacles, Toyotas have 10.6 inches of running ground clearance, the most of any small 4x4. And all Toyota 4x4s come equipped with heavy-duty steel skid plates to protect the transfer case and fuel tank from potentially damaging obstacles, and a rugged forged steel front tow hook.

To make life in the outdoors even easier,

Toyota 4x4 SR5 Xtracab Sports have automatic locking front hubs. Just stop, put the transfer case shifter into 4-wheel drive, and then move forward to engage the hubs.

Toyota's rugged full-box frame helps eliminate flexing on uneven ground, while a double-wall bed keeps loose cargo from denting the outer skin.

The 1985 Toyota 4x4 Trucks are quality-built with durability and value you can count on, mile after mile, year after year.

The Toyota 4x4s. They're rugged and ready for wherever work or play takes you.

*See EPA mileage statement on Specifications page. Shows with optional equipment. See Features chart for details.



SWAY ADJUSTABLE DRIVER'S SPORT SEAT

CREATURE COMFORT
The optional 7-way adjustable driver's Sport Seat on the SR5 Xtracab has lumbar support, tilted in comfort. Seats are upholstered in attractive SKI-patterned cloth.

DRIVING CONVENIENCE
The easy-shifting 4x4 Electronically Controlled automatic overdrive transmission will shift pattern selector into gear chosen without shifting needs— "Power" for normal driving or "Power" for extra acceleration.



ALL-WEATHER STEEL-BELTED RADIAL TIRES



2.4 LITER SOHC ENGINE



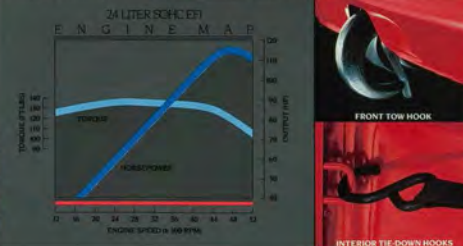
4x4 ELECTRONICALLY CONTROLLED AUTOMATIC TRANSMISSION



ELECTRONIC FUEL INJECTION



5-SPEED OVERDRIVE TRANSMISSION



2.4 LITER TURBO DIESEL ENGINE

SMOOTH POWER
Toyota's smooth-shifting 5-speed overdrive transmission and all-new 2.4 liter Turbo-Diesel engine deliver responsive performance.

4x4 Turbo-Diesel truck not available in California. 2-wheel drive Turbo-Diesel available in California only.

RUGGED POWER
The 2.4 liter SOHC electronically fuel-injected engine produces 116 hp. That's more than any other small truck.



4x4 SR5 LONG BED SPORT TRUCK



HIGH GROUND CLEARANCE



4x4 XTRACAB DELUXE TRUCK



TOYOTA 4x4 SR5 OFF-ROAD CHAMPION

TOUGH AND READY
Traction lets three plenty of torque and pulling power to haul heavy loads. Standard features include forged-steel front tow hook and bed-tether hooks to hold cargo level.

CHAMPIONS
Toyota Trucks won the Manufacturer's Cup Championship for 1984, and they won first-place Class 7 honors in the 1984 Las Vegas Mail 100 and off-road championships at Pymont and Barlow.



STEEL SKID PLATES*

OFF-ROAD READY
Toyota 4x4s come standard-equipped with fully enclosed front drive axles, steel skid plates for transfer case and fuel tank, and all-weather steel-belted radial tires.

FEATURES

MOST MUSCLE, TURBO HUSTLE

The 1985 Toyota SR5 Xtracab Sport Truck packs more power under the hood than any small truck in America—import or domestic.

Toyota's brand-new 24 liter electronically fuel-injected gas-turbo engine, matched with a 4-speed Electronically Controlled automatic overdrive transmission, is the most powerful small truck engine in

America. An incredible 135-horsepower output. Now that's turbo power—from Toyota.

Speaking of power, the muscular 116-horsepower 24 liter EFI engine in the Toyota SR5 Xtracab Sport Truck is also more powerful than any other small truck engine. You can match that power with your choice of transmissions: a 5-speed

overdrive or Toyota's optional, innovative 4-speed automatic overdrive transmission with overdrive lock-out switch.

The SR5 Xtracab's Soft-Ride rear suspension and torsion bar front suspension smooth out the rough spots and help hold the road. You've got confident stopping power, too, with power-assisted

ventilated front disc/rear drum brakes.

Inside, you'll find more legroom than in any other small truck. There's comfort with reclining low-back bucket seats, attractive upholstery, and cut-pile carpeting underfoot. And for concert-quality sound, turn on the AM/FM/MPX stereo receiver.

The SR5 Xtracab Sport has the convenience you want. There's inside storage space behind the seats. Grab your tools, tackle box or briefcase because now you've got room inside. The SR5 Xtracab's full instrumentation includes tachometer, oil pressure and coolant temperature gauges, and digital quartz clock. Out back, there's a double-wall bed with internal tie-

downs for a clean, uncluttered appearance and an exterior deck lamp for night work.

For extra room, more muscle, and turbo hustle, the truck to get is the 1985 Toyota SR5 Xtracab Sport Truck—America's #1 selling small truck.

Shown with optional equipment. See Features chart for details.



24 LITER TURBO GAS ENGINE

TURBO POWER



TURBO SR5 XTRACAB SPORT TRUCK

GOOD LOOKS AND GREAT MOVES

The 1985 Toyota SR5 Sport Truck has it all, including advanced styling that deserves a second look.

Sporty stripes accent the SR5's clean lines and distinctive cab design. Optional aluminum alloy wheels give the SR5 that special flair. The SR5 goes as good as it looks. Step on the accelerator and you get

right-now response from the 24 liter SOHC engine with Electronic Fuel Injection. With 116 horsepower, it's got the most power of any small truck.

A smooth-shifting 5-speed overdrive transmission lets you cruise the highways at reduced engine speed. The handling is easy and the ride is unruffled thanks to

torsion bar front suspension and Toyota's Soft-Ride rear suspension with staggered-mount hydraulic shock absorbers. Power-assisted ventilated front disc/rear drum brakes help bring you to a confident stop.

The Toyota SR5 is one handsome truck inside. Deep-pile carpeting covers the floor from wall to wall. Contoured bucket seats

upholstered in sport-patterned cloth keep you comfortable as the miles roll by, or choose the optional Sport Seats with 6-way adjustable driver's seat.

The padded dash has everything you need—right where you want it. All instruments, including tachometer, oil pressure, temperature, and voltmeter gauges, are

easy to read. Column-mounted controls for headlights, turn signals, windshield wipers and washers—like all switches and controls—are close at hand.

For greater driving convenience, choose the optional Power Package, which includes Cruise Control, power windows, and more.

To keep you company, there's an AM/FM/

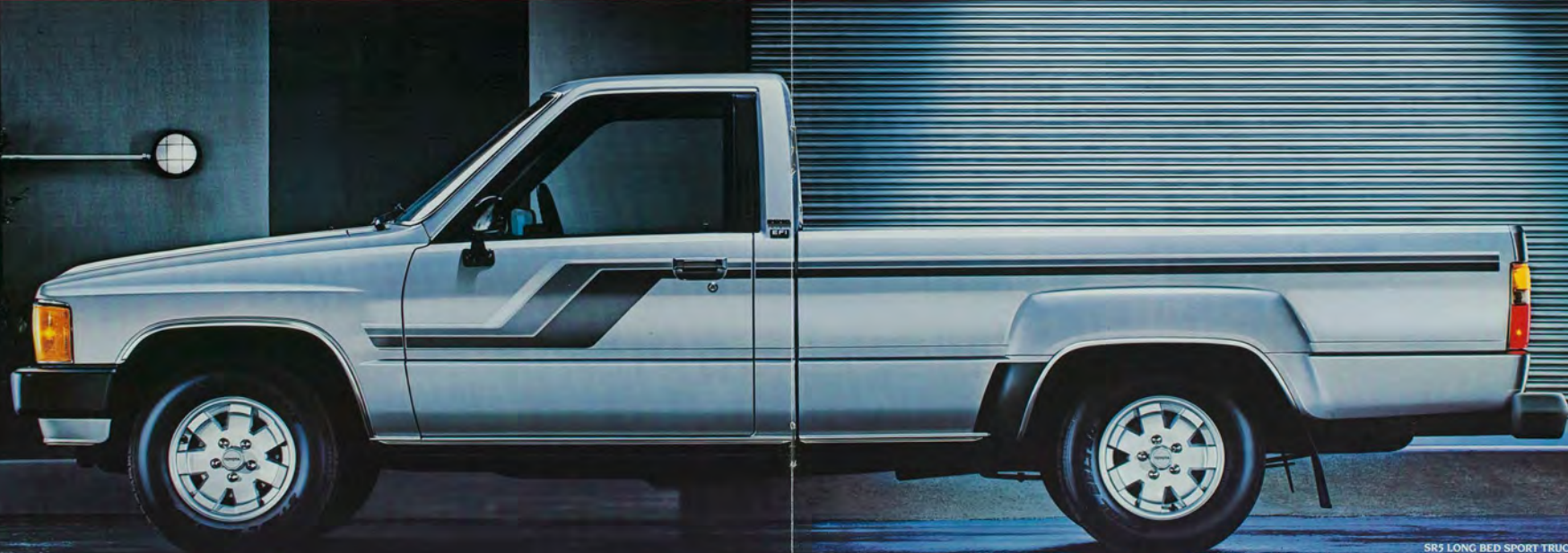
MPX stereo receiver. Or, if that's not sound enough, go for the optional AM/FM/MPX stereo receiver with cassette and three speakers for unparalleled sound.

Good looks. Great moves. And a whole lot more. Get it all with the SR5 Sport Truck.

Shown with optional equipment. See Features chart for details.



FULL INSTRUMENTATION



SR5 LONG BED SPORT TRUCK

VERSATILITY AND VALUE

If you're looking for value, you've found it. The 1985 Toyota Deluxe Trucks are rugged, quality-built performers. They're tough on the job and easy on your budget.

The 1985 Toyota Deluxe Trucks are powered by a husky 24 liter SOHC engine. These trucks have the horsepower and torque you need to haul a 1400 lb. payload*

across town or across the country. Or you can have the extra economy of a 24 liter diesel engine in the Long Bed and Xtracab Diesel Deluxe Trucks.**

There's an easy-shifting 5-speed overdrive, or Toyota's optional 4-speed automatic overdrive transmission†

Toyota Deluxe Trucks feature a Soft-Ride

rear suspension system that's built to last. Power-assisted ventilated front disc/rear drum brakes give you firm stopping power. A fully transistorized ignition system provides years of reliable starts and helps cut your maintenance costs.

Like all Toyota Trucks, they're built on full-box frames for strength and rigidity. Deluxe

Trucks feature rugged double-wall bed construction with internal tie-downs, and a one-touch tailgate release for quick, convenient access.

Inside, you'll find comforts and conveniences on a deluxe scale. The Xtracab's roomy interior has the most legroom of any small truck, lots of storage space, and

a removable cargo tray behind the seats. The Long Bed Deluxe has a bench seat for comfortable 3-across seating.

For truckers who want maximum value per dollar, there's the 1985 Standard Bed, Toyota's lowest-priced†† Truck that's loaded with standard features.

The 1985 Toyota Deluxe and Standard Bed

Trucks. They're packed with the versatility and value you need.

*Including occupants, equipment and cargo.

**Not available in California.

†Not available on Diesel Deluxe Trucks.

††Based on manufacturer's suggested retail price.

Actual retail price may vary.

Shown with optional equipment. See Features chart for details.



DELUXE CLOTH INTERIOR



STANDARD BED TRUCK



LONG BED DIESEL DELUXE TRUCK AND XTRACAB DELUXE TRUCK

NEW 1 TON AND CAB/CHASSIS

Meet the all-new 1985 Toyota 1 Ton Truck. It's built strong to handle a full 2500 lb. payload.* This tough working partner has a Gross Vehicle Weight Rating of 5500 lbs. With optional Towing Package you can tow up to an additional 5000 lbs.** And the roomy cab has a full 3-across bench seat. The new 1 Ton gets its muscle from a

powerful 24 liter engine with Electronic Fuel Injection. Add a smooth-shifting 7-speed overdrive transmission, and you've got on-the-job performance.

The 1 Ton Truck comes with heavy-duty front and rear suspension, rear axle, and radiator. The spacious 7-foot bed has double-wall construction, internal tie-down

hooks, heavy-gauge steel floor, and an easy-opening one-touch tailgate. Even the front bumper is a special heavy-duty design.

A rear load-sensing proportioning valve automatically adjusts front and rear braking forces to compensate for load weights ranging from empty to full load capacity. Need a specialized body application?

The 1985 Toyota Commercial Cab/Chassis lets you custom tailor your truck: utility, custom delivery, flat or stake bed. And Toyota's Camper Cab/Chassis is just right for a custom camper or motorhome.

With a 24 liter electronically fuel-injected engine that produces 116 hp, the 1985 Toyota Cab/Chassis have more power and

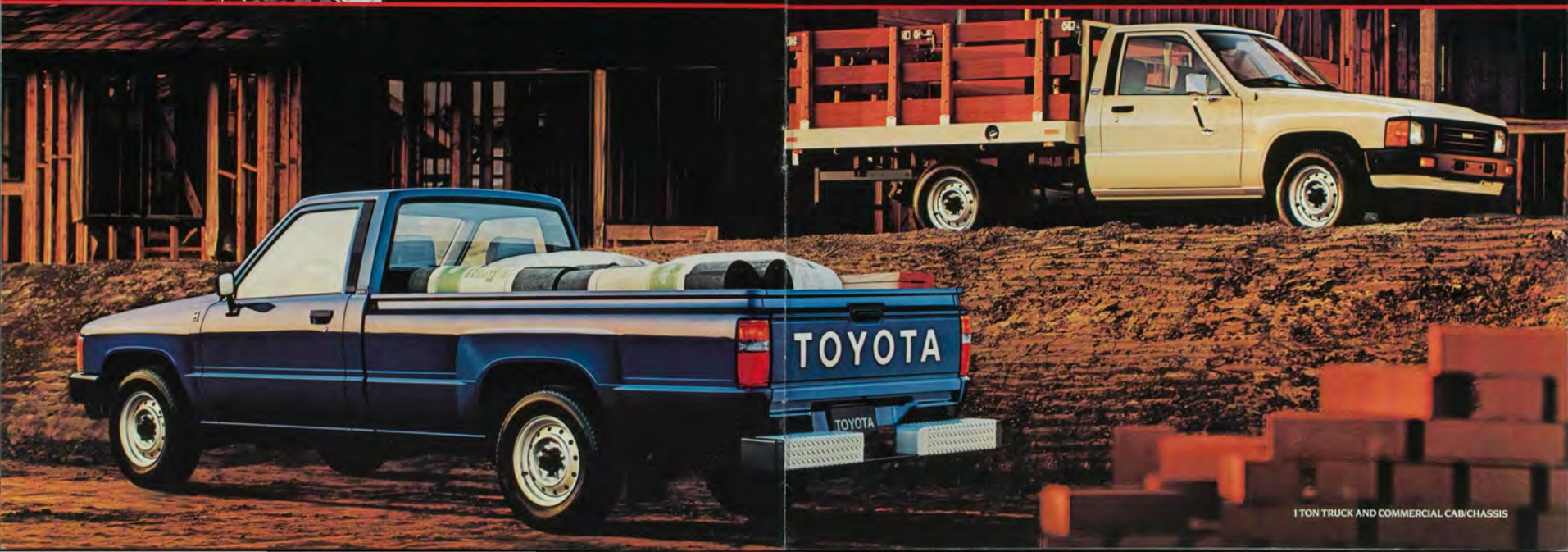
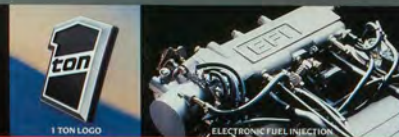
performance than ever. The Camper Cab/Chassis gives you the choice of a smooth-shifting 4-speed manual or an optional 4-speed automatic overdrive transmission.

Heavy-duty suspension and rear axle components, plus 185R14 8-ply tires give Toyota Cab/Chassis a Gross Vehicle Weight Rating of 5500 lbs. The roomy cabs have

comfortable, deeply padded seats.

The new 1985 Toyota 1 Ton Truck and Cab/Chassis. They're built Toyota-tough to suit your special needs.

*Including occupants, equipment and cargo
**Not to exceed combined GVWR of 8500 lbs.
Shown with optional equipment. See Features chart for details.



TOYOTA'S RUGGED WORKHORSES

There's a lot more than meets the eye in the 1985 Toyota Trucks. Beneath the crisp styling, every Toyota Truck transforms advanced technology into performance you can feel and durability for the long run.

At the heart of all gasoline-powered Toyota Trucks is a rugged 24 liter SOHC

engine. For 1985, you'll find more trucks with Toyota's exclusive multi-point Electronic Fuel Injection system that boosts performance and fuel economy** by precisely metering the correct amount of fuel for the driving situation. With EFI, the new 24 liter engine produces 116 horsepower, the most

of any small truck you can buy.

Toyota's optional, innovative 4-speed automatic overdrive transmission offers added driving ease with the gas-saving efficiency of overdrive which helps reduce engine wear and tear at highway speeds, and means quieter operation as well.

All gasoline-powered Toyota Trucks feature a fully transistorized electronic ignition system for a consistent, hot spark and quick starts. You'll get proven reliability and you'll save on maintenance costs as well. Another cost-saving maintenance feature is the 10,000-mile oil change interval.

Toyota's rugged design continues throughout with a full-box frame that adds increased strength and rigidity. Toyota 2-wheel drive Trucks have torsion bar front suspension and Soft-Ride™ rear suspension with stabilizer bar and staggered-mount rear shocks for a smooth, stable

ride, good road holding, and easy handling if you want the latest technology under the hood, and quality and value throughout the truck you want is a Toyota.

**See EPA mileage statement on Specifications page. †Deluxe and SR5 models only. ‡Shown with optional equipment. See Features chart for details.



POWER AND PERFORMANCE
24 liter SOHC engine with Toyota's exclusive multi-point Electronic Fuel Injection boosts power and performance for 1985



LEAF SPRING REAR SUSPENSION



TORSION BAR FRONT SUSPENSION



SOFT 5-SPEED AUTOMATIC OVERDRIVE TRANSMISSION



5-SPEED OVERDRIVE TRANSMISSION



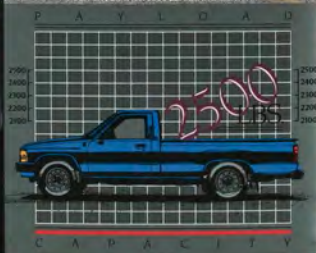
FULL BOX FRAME

RUGGED CONSTRUCTION

Every Toyota Truck features rugged full-box frame for increased strength. 4-speed manual, 5-speed overdrive or optional 4-speed automatic overdrive transmission supplies useful driving



1 TON TRUCK WITH 3000-LB TOWING CAPACITY



INCREASED PAYLOAD

New Toyota 1-Ton Trucks takes on a full 2500 lb payload capacity, including occupants, equipment and cargo.



TOWING PACKAGE



COMMERCIAL CAB CHASSIS WITH TOOL BOX

MORE PULL

New 1-Ton Truck offers optional Towing Package that lets you tow up to 3000 additional lbs. Both 1-Ton Truck and Cab Chassis have 24 liter SOHC engine with Electronic Fuel Injection for 1985. †Not in standard GVWR of 1500 lbs.



LONG BED DIESEL DELUXE TRUCK



24 LITER DIESEL ENGINE



Diesel Truck with 5-speed overdrive transmission.

DIESEL ECONOMY

The Diesel Deluxe Truck™ with a 24 liter diesel engine, heavy-duty dual-battery electrical system, and heavy-duty starter, delivers powerful yet fuel-efficient performance.

†Not available in California. See Features chart for availability.



DOUBLE-WALL BED CONSTRUCTION

BUILT TOUGH

Most 1985 Toyota Trucks have double-wall bed construction that helps protect exterior panels from cargo damage.

FEATURES

