

G E T T O K N O W

GEO

1 9 9 0

STORM

PRIZM

METRO

TRACKER



*THIS IS THE 1990'S.
AND WE INVITE YOU TO GET TO KNOW GEO.*

STORM

PRIZM

METRO

TRACKER

GET TO KNOW GEO

Introducing Geo, a new approach to quality in the automotive marketplace. Geo combines the best of Japanese thinking in technology and design with recognized North American know-how in manufacturing, engineering and comfort.

Geo is also an example of ground-breaking teamwork among American, Japanese and Canadian automakers. As a result of recent GM affiliations with Toyota, Isuzu and Suzuki, you are now offered a family of world-class products—all under one new and meaningful nameplate.

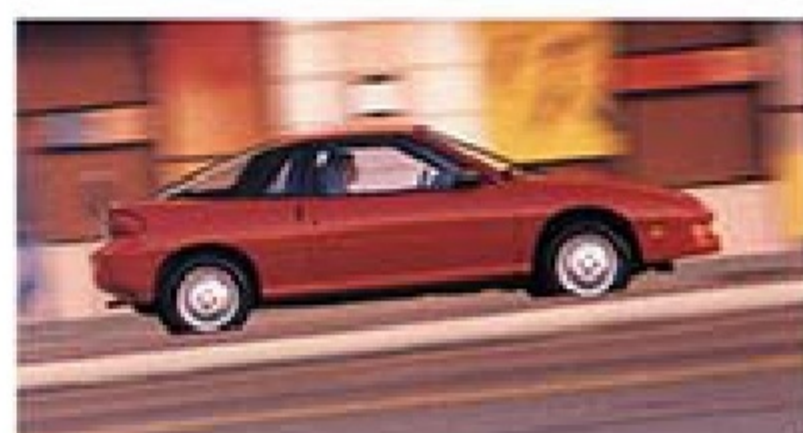
The Geo family of vehicles is sold and serviced by select Chevrolet/Geo dealers at thousands of locations nationwide—one of the largest dealer networks in the world.

You also get the best small-car warranty in GM history: the GM 3-year/50,000-mile Bumper to Bumper Plus limited warranty. (See the inside back cover of this brochure for details.)

Geo is designed for people who place great importance on quality, value, design, technology and affordability. People who seek exceptional fuel economy,* nimble handling and brisk performance. People who are looking for surprising interior spaciousness within trim exterior dimensions. And people who are simply looking for truly personal transportation. If you're one of them...get to know Geo.

Geo for 1990 is a comprehensive lineup of 17 models, including front-wheel drive and four-wheel drive, roomy sedans and capable hatchbacks, sleek 2+2 fastbacks and fun-loving convertibles. There are four distinct series:

Geo Storm is the brand-new 2+2 sports machine that does 0-to-60 in under nine seconds on the test track† with the GSi 16-valve DOHC 1.6 Liter engine.



The expressive style of Geo Storm 2+2 helps make this a sports car for the Nineties. Design details include flush-mounted glass, semi-hidden headlamps, full front fascia with integral fog lamps and aero-style skirting all around.



At the heart of Geo Prizm: one of the industry's most sophisticated engines. This 1.6-liter high-performance engine features four valves per cylinder, dual overhead cams and Multi-Port Fuel Injection. It all adds up to excellent performance in a compact sedan.



Thanks to an innovative, fuel-injected 3-cylinder engine, Geo Metro XFi is one of the most fuel-efficient cars sold in the United States. EPA estimated MPG: 53 city, 58 highway.



When the blacktop stops, Geo Tracker fun is just beginning. Features include four-wheel drive, high ground clearance and big P205/75R-15 on/off-road tires.

Geo Prizm is our new standard of excellence in affordable sedans. This five-passenger family car is built by New United Motor Manufacturing in Fremont, California (the GM-Toyota joint-manufacturing venture).

Geo Metro is the four-passenger economy car with excellent gas mileage, the lowest price tag of any Geo and the import appeal of every Geo.

Geo Tracker is the rugged four-passenger, 4x4 sport utility truck that has both the looks and capabilities of a true adventurer.

The advanced technology you'll find in many Geo models includes:

- Dual overhead camshaft, four-valve-per-cylinder engine designs
- Slick-shifting 5-speed manual transmissions
- Driver-oriented ergonomics with bold analog gage clusters
- Four-wheel independent suspension systems tuned for precise response.

Geo models also offer the designed-in comfort and convenience features you'd expect of a world-class small car—items like fully reclining front bucket seats and door storage pockets in all models. Plus some features you may not expect—such as standard **Scotchgard™** Fabric Protector on seats and door panels in Geo Prizm and Geo Storm, or an optional state-of-the-art Delco AM/FM stereo music system with stereo cassette tape player in most models.

Please accept our invitation to get to know a family of cars that offers more than you ever expected. More choices. More dealers. More technology. More value. Get to know Geo.

CONTENTS

4 GEO STORM

A new 2+2 sport coupe with exciting styling, performance and handling. Choose from Geo Storm 2+2 or Geo Storm GSi 2+2.

14 GEO PRIZM

The five-passenger flagship of the Geo family of advanced-design small cars. Choose from sedan or hatchback models and three trim levels.

28 GEO METRO

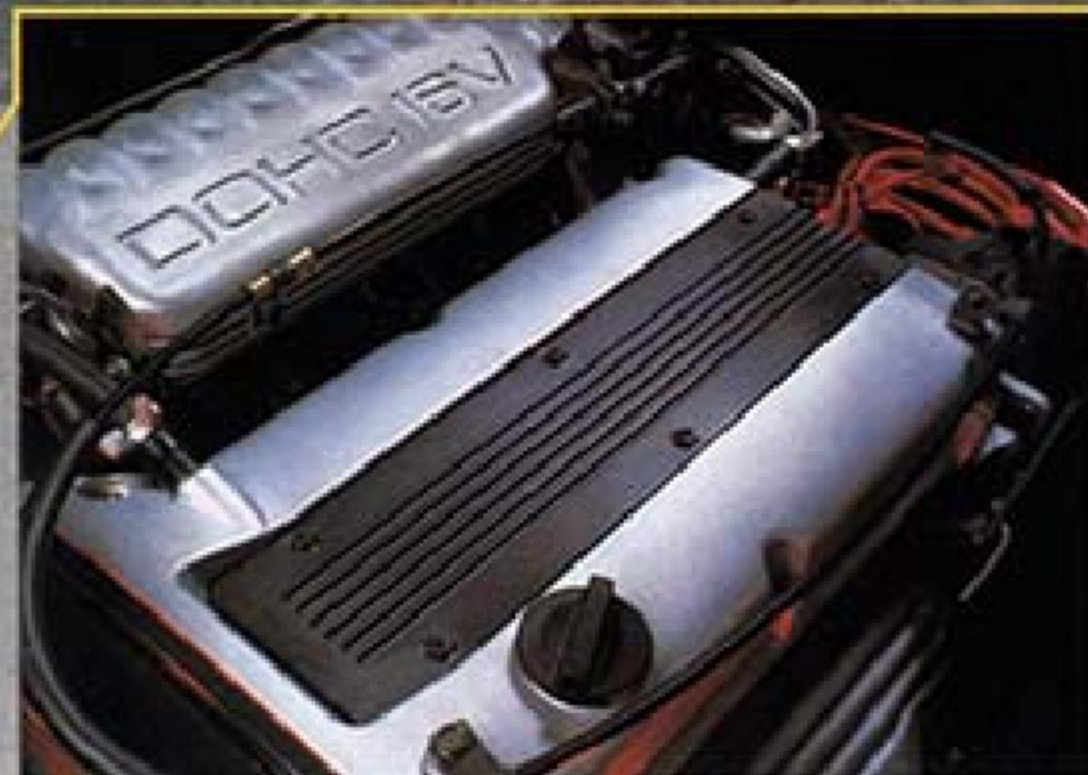
Maximum style, maximum fun...at a minimum price. Metro is the smallest, most affordable member of the Geo family. Choose from three trim levels: the most economical Geo Metro XFi (3-door), the regular Geo Metro (3-door or 5-door) or the top-of-the-line LSi (3-door or 5-door).

38 GEO TRACKER

The fun-to-drive 4x4 that combines sporty style with rugged durability. Choose from Geo Tracker or Geo Tracker LSi trim levels, steel roof or canvas convertible top.

*Example: Geo Prizm 24 MPG city, 28 MPG highway.
†On GM test track with professional driver.

GEO
STORM



Geo Storm GSi features a hot 16-valve 1.6-liter engine with dual overhead camshafts for free-breathing, high-revving performance. Horsepower is 130 at 7000 RPM.

Geo Storm is the new generation of performance coupe, for a new generation of enthusiasts.

The shape is aggressive, the technology leading-edge and the price affordable.

If this sounds like your kind of driving machine, read on. Or better yet, take a twisty piece of pavement by storm. Geo Storm. Choose from the 2+2 Coupe or GSi 2+2 Coupe.



Geo Storm GSi 2+2 Coupe.

Geo Storm's MacPherson strut four-wheel independent suspension with front stabilizer elevates control and balance to a science.



GEO STORM 2+2

Geo Storm 2+2 is the brand-new sport coupe with the style to set it apart from its competition.

Within this expressive shape is a highly affordable, feature-packed sport coupe. Standard equipment on every Geo Storm 2+2 includes:

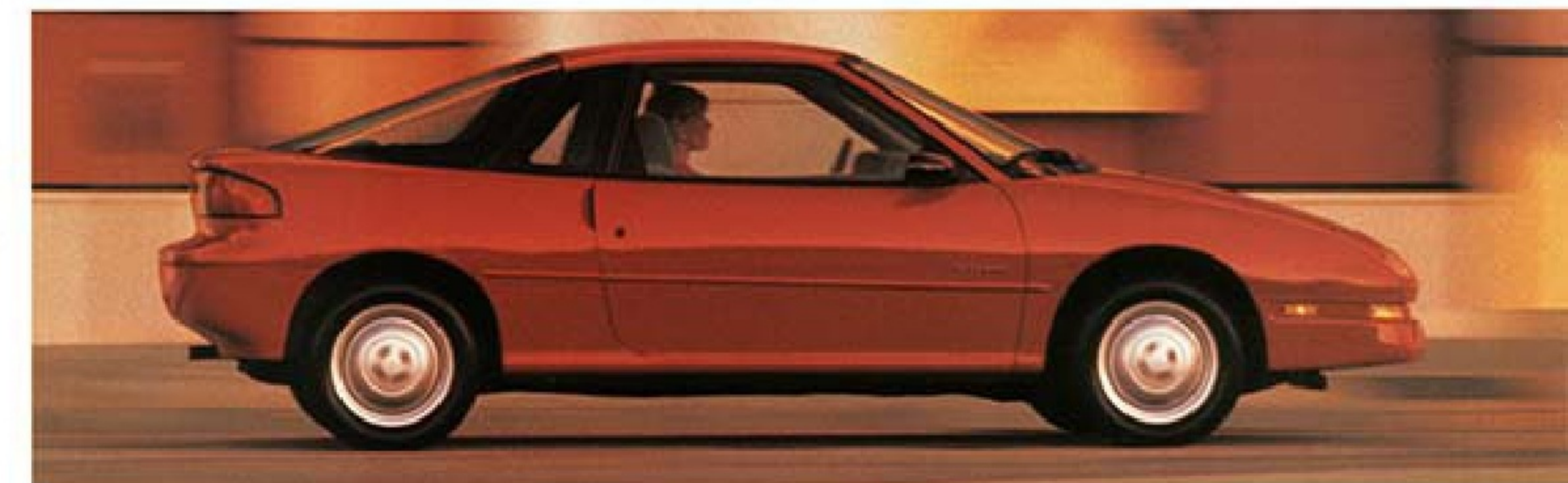
- Dramatic fastback coupe styling with pop-up headlamp covers, blackout trim, integrated body-color bumpers, aero-style flush-mounted tinted glass and a full-glass rear hatch.
- A sport-styled interior with high-back reclining front bucket seats.
- A two-passenger rear seat with folding backrest for increased cargo-carrying flexibility.
- Fully trimmed door panels with integral storage bins, passenger-side visor mirror and a floor-mounted console with convenience trays.
- Complete analog instrumentation, including speedometer, tachometer, trip odometer, fuel gage and temperature gage. All gages are backlit for enhanced nighttime visibility.
- A spirited 12-valve 1.6-liter four-cylinder engine with single overhead camshaft. Horsepower is 95 at 5800 RPM. Choice of standard 5-speed manual transmission or optional 3-speed automatic.
- A four-wheel independent suspension with power rack-and-pinion steering designed to please the driving enthusiast. Tires are P185/60R-14 all-season steel-belted radials.

The Geo Storm control center includes full instrumentation with tachometer, standard AM/FM stereo radio with Seek and Scan, four speakers and digital clock, a headlamps-on warning tone and a remote decklid opener.



The 2+2 interior features high-back front bucket seats, full-folding rear seat, floor console with convenience trays and a driver's supplemental inflatable restraint system (air bag). Scotchgard™ Fabric Protector has been applied to the seat fabric of all Geo Storms, making food spills and other little messes a lot easier to clean up.

Geo Storm 2+2 Coupe.





GEO STORM GSi 2+2

GSi 2+2 is the full-blown Storm: an all-out performance machine for the all-out performance enthusiast.

GSi 2+2 equipment includes:

- A 130-HP 16-valve engine with dual overhead camshaft design for excellent performance throughout a broader RPM range.
- Choice of a standard 5-speed manual transmission or optional 4-speed automatic.
- Sport Suspension with fast-ratio steering, front and rear stabilizer bars, gas-filled rear shock absorbers and P185/60R-14 tires on cast-alloy road wheels.
- Unique exterior appearance with special front fascia/air dam, fog lamps, rocker panel skirts, rear wiper/washer and large body-color rear spoiler.
- Sport interior with premium contour molded front bucket seats, adjustable "see-through" front head restraints, intermittent wipers, oil pressure gage and voltmeter.



Geo Storm GSi 2+2 Coupe.

Body-contoured sport bucket seats highlight the GSi interior.

STANDARD FEATURES

Geo Storm combines state-of-the-art technology with a very complete list of standard equipment. From an AM/FM stereo sound system to a driver's-side supplemental inflatable restraint system (air bag), Geo Storm delivers technology and features you might not expect to find at an affordable price.

Geo Storm's advanced engines include a standard 12-valve (3 valves per cylinder) 1.6 Liter Four with a single overhead camshaft, and the 16-valve (4-valves per cylinder) 1.6 Liter Four with dual overhead camshaft that's standard only in the Geo Storm GSi (shown here). The advantages of multi-valve design and an overhead cam design include better breathing, increased volumetric efficiency for improved low-range response and the ability to provide more power at higher engine RPM. Multi-Port Fuel Injection is standard on all Geo Storm engines.



Standard interior convenience features include a coin tray (shown here), console with storage compartment, in-door storage and even an auxiliary 12V power outlet on GSi models.



Pop-up headlamp covers contribute to Geo Storm's sleek aerodynamic profile. Quad halogen headlamps project light further down the road and illuminate objects at greater distances than conventional headlamps.

GEO STORM

GEO STORM STANDARD FEATURES

- 1.6-liter 12-valve engine with single overhead camshaft and Multi-Port Fuel Injection
- 12.4-gallon fuel tank
- AM/FM stereo radio with Seek and Scan, four speakers and digital clock
- Analog gage cluster with backlit speedometer, tachometer, trip odometer, fuel gage and temperature gage
- Black-accented exterior trim
- Body-color wraparound front and rear bumpers
- Body-side moldings
- Cloth-and-vinyl seats
- Coin box
- Day/night inside rearview mirror
- Dome lamp with three-position switch
- Driver's supplemental inflatable restraint system (air bag)



Standard comfort/convenience and technology features in every Geo Storm include Scotchgard™ Fabric Protector, driver's side supplemental inflatable restraint system (air bag), backlit analog instrumentation (including tachometer) for enhanced nighttime visibility and high-back reclining front bucket seats.



- Dual sport mirrors
- Electric rear window defogger
- Five-speed manual transmission with 5th gear over-drive
- Flush-mounted side glass
- Four-spoke sport-type steering wheel
- Front door pockets
- Front-passenger assist grip handle
- Front stabilizer bar
- Full carpeting, including cargo area
- Full floor console with convenience trays
- Full-folding rear seat-back
- Headlamps-on warning chimes
- High-back, reclining front bucket seats
- Independent MacPherson strut front and rear suspension
- Maintenance-free battery
- Passenger-side visor mirror
- Pop-up headlamp covers
- Power front disc/rear drum brakes
- Power rack-and-pinion steering
- Quad halogen headlamps
- Rear hatch with two counterbalancing struts
- Recessed door handles
- Remote deck-lid opener
- Scotchgard™ Fabric Protector**
- Side window defoggers
- Styled steel wheels
- Tires, P185/60R-14 all-season steel-belted radial.

A 5-speed manual transmission with 5th gear over-drive is standard on all Geo Storms.

STANDARD FEATURES

GEO STORM GSI 2+2 EQUIPMENT

In addition to or replacing Geo Storm 2+2 equipment:

- 1.6-liter 16-valve engine with dual overhead camshaft and Multi-Port Fuel Injection
- 14" x 5.5" alloy wheels
- Body-color rear spoiler
- Cargo security cover
- Custom Cloth interior trim
- Distinctive GSi exterior trim
- Intermittent wipers
- Front air dam with integral fog lamps
- Reclining, contoured front bucket seats with "see-through" adjustable head restraints
- Oil pressure gage and voltmeter
- Rear window wiper/washer
- Rocker panel skirts
- Sport Suspension with fast-ratio power steering, front and rear stabilizer bars and gas-charged rear shock absorbers
- Unique aero-style rear fascia.

Exterior/Interior Color and Trim Selector	Interior Colors	
	Blue	Gray
Exterior Colors		
Aqua Metallic		x
Black		x
Bright Red		x
Silver Metallic	x	
Cobalt Blue Metallic		x
White	x	
Bright Yellow (GSI only)		x

Dimensions	
Wheelbase	96.5
Length (overall)	163.4*
Width (overall)	66.7
Height (loaded)	51.1
Tread—Front/Rear	56.3/55.2
Head Room—Front/Rear	37.5/31.9
Leg Room—Front/Rear	43.8/30.4
Hip Room—Front/Rear	50.9/42.7
Shoulder Room—Front/Rear	53.3/51.2
Usable Luggage Capacity (cu. ft.)	11.0†
Rated Fuel Tank Capacity (gals.)	12.4

*163.9 on GSi
†21.8 with rear seat down.



BUMPER TO BUMPER PLUS
3 YEAR/50,000 MILE WARRANTY

Chevrolet's best warranty ever. See the inside back cover of this brochure for details. And see your Chevrolet dealer for complete terms and conditions of this limited warranty.



Geo Storm GSi features premium contour molded front bucket seats with "see-through" head restraints.

OPTIONS

GEO STORM



Geo Storm 14" styled steel wheels.

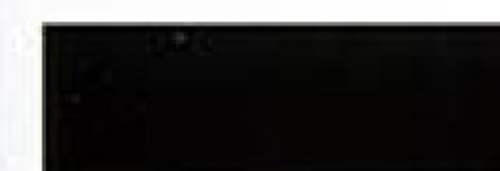


Geo Storm GSi 14" cast-alloy road wheels.

Exterior Colors



Aqua Metallic



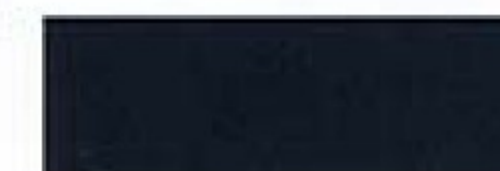
Black



Bright Red



Silver Metallic



Cobalt Blue Metallic



White



Bright Yellow (GSI only)

Geo Storm features optional Preferred Equipment Groups to help simplify the buying process. Group 1 includes a 5-speed manual transmission. Group 2 features an automatic transmission. Choose the package containing the equipment you desire, then select from the list of individually available options that follows. It's that simple.

Individually Available Options

- Air conditioning
- Floor mats (front and rear)
- Radio: Delco AM/FM stereo with Seek and Scan, stereo cassette tape player, four speakers and digital clock.



Optional Delco AM/FM stereo radio with Seek and Scan, stereo cassette tape player and digital clock.



Geo Storm's high-output optional air conditioning features four adjustable instrument-panel outlets, a lap cooler air outlet and 4-speed fan blower. Controls are illuminated for excellent nighttime legibility.



Geo Storm 2+2 is available with an optional 3-speed automatic transmission. Geo Storm GSi 2+2 features an optional 4-speed automatic with overdrive for low-RPM highway cruising.

GEO
PRIZM



Geo Prizm lets five people ride in comfort. Interior features include chair-high seating and generous glass area for excellent visibility.

This spacious five-passenger automobile is the flagship of the Geo family of advanced-design vehicles.

One important reason Geo Prizm has received rave reviews from both auto enthusiasts and consumer publications is an impressive performance resume. The technology includes a 1.6 Liter 16-valve engine with Multi-Port Fuel Injection, rack-and-pinion steering and a tuned four-wheel independent suspension.

Other reasons include impressive interior comfort, a beautiful ride and world-class quality in material and workmanship.

Select from Geo Prizm Sedan, Geo Prizm Hatchback, Geo Prizm LSi Sedan, Geo Prizm LSi Hatchback, or the sporty Geo Prizm GSi Sedan or GSi Hatchback.



Geo Prizm LSi Sedan.

The Geo Prizm GSi instrument panel is a study in design excellence. Everything is where it should be, from the highly legible analog instrumentation to the controls for the optional AMIFM stereo music system and the optional air conditioning.



Geo Prizm Sedan with optional full wheel covers.

Geo Prizm Hatchback Sedan.



The Hatchback Sedan's spacious cargo area is accessible through a wide-opening rear hatch. A standard split-folding rear seat adds convenience. Also standard: a removable security cover that extends over the rear area when the back seat is upright to shield your valuables from view.



GEO PRIZM SEDAN/HATCHBACK

There is a Geo Prizm for buyers who want the traditional sedan look and a bonafide trunk. And a Geo Prizm for those who prefer the versatility of a hatchback.

Whichever Geo Prizm you choose, Sedan or Hatchback, both have the 16-valve DOHC engine with Multi-Port Fuel Injection, rack-and-pinion steering and a tuned four-wheel independent suspension.

You'll also get rugged unitized body-frame construction, the solid traction of front drive and P175/70R-13 all-season steel-belted radial tires, power front disc/rear drum brakes and a maintenance-free battery.

The five-passenger Geo Prizm Sedan gives you contemporary sedan style with thin-pillar design for excellent visibility and a spacious trunk that opens at bumper level for easy loading.

Geo Prizm Hatchback Sedan presents a very sporty appearance highlighted by dramatic wraparound rear glass. Yet this versatile body style offers four-door convenience, room for five passengers, a standard split-folding rear seat, up to 32.2 cu. ft. of cargo capacity with the rear seat folded flat, plus a wide rear hatch that opens at bumper level.



GEO PRIZM

The first thing you'll notice is the room. Although Geo Prizm is trim-sized on the outside, it delivers surprising luxury and comfort for five passengers on the inside.

Now picture yourself behind the wheel. The view is terrific, thanks to Geo Prizm's expansive glass area and thin pillars, low hood line, chair-high seating and low instrument panel.

The airy spaciousness of Geo Prizm is made even nicer with all the following standard features: richly tailored cloths and color-coordinated carpeting, headliner, door panels and instrument panel. Deeply contoured reclining front bucket seats offer firm support and adjustable head restraints add to the comfort. Storage pockets on both front doors, center console with storage trays and a slide-out cup holder add to the convenience. Lap/shoulder safety belts are included at all outboard seating positions.

Other standard features: tinted glass, left-hand remote outside rearview mirror, headlamps-on warning tone, low-fuel warning lamp, remote release for fuel filler door and a rear window defogger.

Geo Prizm Sedan Interior.

The Geo Prizm instrument panel features easy-to-read analog gauges. Optional AM/FM stereo shown.





GEO PRIZM LSi

If you're looking for up-level trim and impressive appointments in your next family car, the Geo Prizm LSi awaits your inspection.

The high-style LSi option consists of a distinctive exterior trim package and a custom interior. LSi equipment is optional on the hatchback (shown at left) and on the sedan (shown below).

Exterior highlights of the LSi are wraparound body-color front and rear bumpers, body-color grille, dual mirrors and custom aero-style full wheel covers. A rear-window wiper/washer is included on the LSi Hatchback.

Inside LSi, beautifully tailored custom fabrics grace the seats, headrests and door panels. The LSi Sedan also provides additional cargo- or people-carrying versatility with a 60/40 split-folding rear seat with trunk pass-through feature. The split-folding rear seat is also standard on all Geo Prizm Hatchback models.

Other LSi appointments include a custom "soft-feel" steering wheel, left- and right-hand covered visor mirrors and passenger-assist grips.

Geo Prizm LSi Hatchback Sedan.



Geo Prizm LSi Sedan.

The Geo Prizm LSi interior features custom fabrics and a split-folding rear seat.



GEO PRIZM GSi

Geo Prizm GSi is an *advanced* sport sedan, one of those truly rare automobiles that is as relaxing in Interstate cruising as it is fun on twisting two-lane roads.

The secret to this uncompromised level of performance includes:

- A high-output 130-HP version of the 16-valve, dual overhead cam Geo Prizm engine that gives GSi an excellent horsepower-to-weight ratio.
- A sport version of Geo Prizm's fully independent suspension with front and rear stabilizer bars, combined with P185/60HR-14 Eagle GT tires for precise handling and excellent ride comfort.
- Power steering and power four-wheel disc brakes.
- The choice of a standard 5-speed manual transmission or optional 4-speed electronically controlled automatic with overdrive. The automatic even includes a switch that lets you choose a "Normal" setting for everyday driving or a "Power" setting for extra performance.

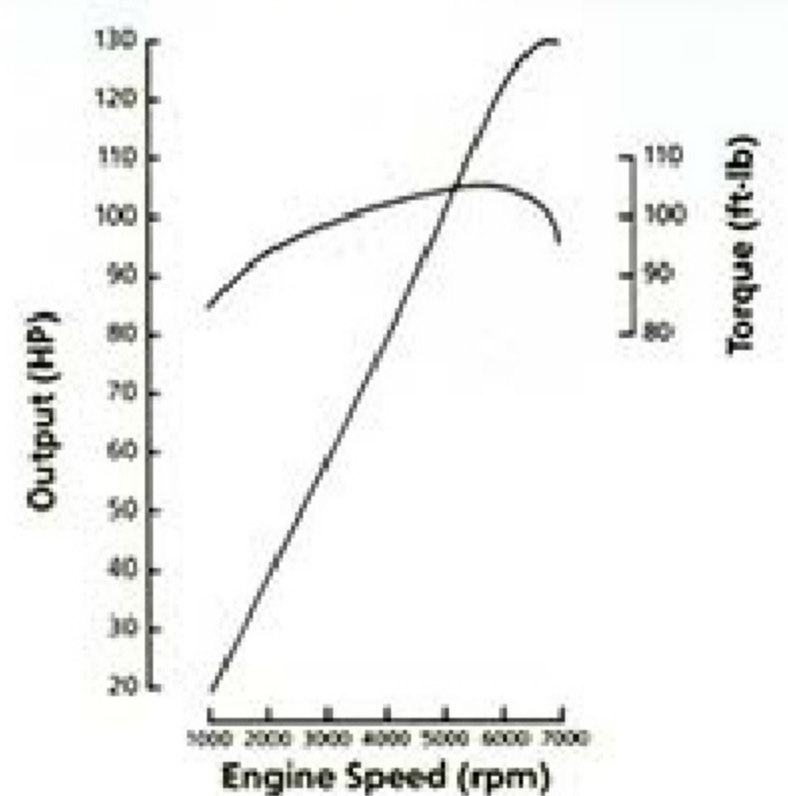
Geo Prizm GSi also has the style and appointments to accentuate its excellent performance. Exterior features include distinctive body-color front and rear fascias, 14" aluminum wheels, dual mirrors, a rear spoiler and a rear window wiper/washer on the hatchback sedan.

The GSi interior treats its occupants to Sport Cloth trim, driver's seat vertical height adjuster, sport steering wheel, complete analog gage package with tachometer and passenger-assist grips.

Choose from GSi Sedan or GSi Hatchback Sedan.

Geo Prizm GSi Sedan.

The 16-valve DOHC engine in Geo Prizm GSi offers excellent response through a broad RPM range. Horsepower is 130 at 6600 RPM.



Geo Prizm GSi interior.



STANDARD FEATURES

Geo Prizm is the advanced-technology, high-quality small family car of the 1990's. For example, under the hood is one of the industry's most sophisticated engines. Geo Prizm is also a notably well-equipped automobile. Highlights of Geo Prizm standard and optional features are described on these pages.

GEO PRIZM STANDARD EQUIPMENT

- 1.6 Liter 16-valve engine with dual overhead camshaft and Multi-Port Fuel Injection
- Five-speed manual transmission
- 13.2-gallon fuel tank
- Four-wheel independent suspension
- Black body-side moldings with chrome accent
- Blackout pillar treatment
- Cloth seats
- Composite halogen headlamps
- Day/night inside rearview mirror
- Floor console with slide-out cup holder
- Front and rear ashtrays
- Front door storage pockets
- Full carpeting
- Glove box with door and latch
- Headlamps-on warning chimes
- Low-fuel warning lamp
- Low lift-over rear hatch and trunk openings
- Luggage area lamp
- Maintenance-free battery
- Power front disc/rear drum brakes
- Rear stabilizer bar
- Rear window defogger
- Reclining front bucket seats
- Remote fuel filler door opener
- Tinted glass, all windows.

GEO PRIZM LSi EQUIPMENT

In addition to or replacing standard Geo Prizm equipment:

- AM/FM stereo radio with Seek and Scan, four speakers and digital clock
- Body-color grille
- Body-color front and rear bumpers
- Custom aero-style full wheel covers

- Custom interior with split-folding rear seat
- Custom "soft-feel" steering wheel
- Dual covered visor mirrors
- Dual exterior mirrors, left-hand remote, right-hand manual
- Passenger-assist grips
- Rear window wiper/washer (LSi Hatchback only).

GEO PRIZM GSi EQUIPMENT

In addition to or replacing standard Geo Prizm or Geo Prizm LSi equipment:

- Body-color side moldings with accent stripe
- Four-wheel power disc brakes
- Full instrumentation with tachometer and oil pressure gage
- P185/60 HR-14 Goodyear Eagle GT tires and 14" aluminum wheels
- Power steering
- Rear spoiler
- Specific body-color grille and front and rear fascias
- Specific custom interior trim with multi-adjustable front bucket seats
- Specific high-output DOHC 1.6 Liter engine
- Sport steering wheel
- Sport Suspension with front and rear stabilizer bars.

Dimensions (in.)

	Hatchback	
	Sedan	Sedan
Wheelbase	95.7	95.7
Length (overall)	170.7	170.7
Width (overall)	65.2	65.2
Height (loaded)	52.4	52.3
Luggage Capacity (cu. ft.)	11.2	17.3*
Fuel Tank Capacity (gals.)	13.2	13.2

*32.2 with rear seat down.

Power Teams

Engines	Geo Prizm/Prizm LSi	Geo Prizm GSi	Transmission Availability		
			Manual 5-speed	3-speed Auto.	4-speed Auto.
1.6 Liter DOHC Four with Multi-Port FI	S	NA	S	O	NA
1.6 Liter DOHC Four with Multi-Port FI High Output	NA	S	S	NA	O

S—Standard. O—Optional. NA—Not Available.

GEO PRIZM



The engine technology that helps make Geo Prizm a smooth, powerful performer includes four valves per cylinder (two intake and two exhaust) for improved volumetric efficiency, a dual overhead camshaft design for weight reduction and faster valve reaction for improved high-RPM performance and Multi-Port Fuel Injection for excellent response and drivability.



Front drive combines with P175/70R-13 all-season steel-belted radial tires on base and LSi models to provide surefooted traction.



Geo Prizm GSi features standard four-wheel power disc brakes.



A pull-out cup holder in the center console is a standard convenience feature.

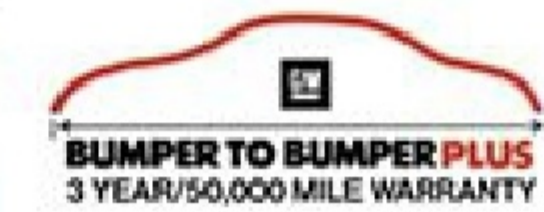


Geo Prizm Sedan's 11.2-cu.-ft. trunk opens at bumper level for easy loading.



Fully reclining front bucket seats with adjustable head restraints are standard on all models.

Exterior/Interior Color and Trim Selector	Interior Colors		
	Blue	Brown	Gray
White		X	
Light Blue Metallic	X		
Dark Blue Metallic	X		
Dark Chestnut Metallic		X	
Bright Red			X
Medium Gray Metallic			X



Chevrolet's best warranty ever. See the inside back cover of this brochure for details. And see your Chevrolet dealer for complete terms and conditions of this limited warranty.

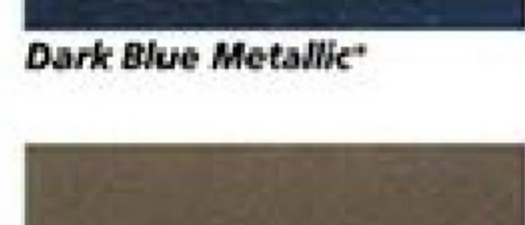


Storage pockets are located in each front door.



A 5-speed manual transmission with 4th and 5th gear overdrive is standard on all models.

Exterior Colors



*Not available on GSi



Mist-cycle wipers allow you to adjust wiper speed to match weather conditions.

OPTIONS

Geo PRIZM OPTIONS

Geo Prizm features Preferred Equipment Groups to help simplify the buying process. These optional groups feature a wide variety of custom features, from a Delco AM/FM stereo to air conditioning. Choose the package containing the equipment you desire, then select from the list of individually available options that follows. It's that easy.

Preferred Equipment Groups: Geo Prizm Sedan/ Geo Prizm Hatchback Sedan

	1	2	3	4
Preferred Equipment Group 1 Transmission: 5-Speed Manual Mirrors: Outside, LH Remote and RH Manual Radio: Electronically Tuned AM/FM Stereo w/Seek and Scan and Digital Clock Power Steering Full Wheel Covers	•	•	•	•
Preferred Equipment Group 2 Automatic Transmission		•		
Preferred Equipment Group 3 Air Conditioning Power Door Lock System Remote Trunk/Hatch Release			•	•
Preferred Equipment Group 4				•

Preferred Equipment Groups: Geo Prizm LSi Sedan/ LSi Hatchback Sedan

	5	6	7
Preferred Equipment Group 5 Transmission: 5-Speed Manual Air Conditioning LSi Exterior/Interior Trim Mirrors: Outside, LH Remote and RH Manual Power Door Lock System Radio: Electronically Tuned AM/FM Stereo w/Seek and Scan and Digital Clock Remote Trunk/Hatch Release Power Steering Tilt Steering Wheel Full Wheel Covers	•	•	•
Preferred Equipment Group 6 Automatic Transmission		•	
Preferred Equipment Group 7 Power Windows Electronic Speed Control with Resume Speed Intermittent Windshield Wiper System			•

Preferred Equipment Groups: Geo Prizm GSi Sedan/ GSi Hatchback Sedan	1	2	3	4	5	6
Preferred Equipment Group 1 5-Speed Manual Transmission	•					
Preferred Equipment Group 2 Automatic Transmission		•				
Preferred Equipment Group 3 Air Conditioning Color-Keyed Front and Rear Floor Mats Dual Vanity Mirrors Remote Trunk/Hatch Release Split-Folding Rear Seat (Notchback Only) Tilt Steering Wheel			•	•	•	•
Preferred Equipment Group 4 Power Door Locks Power Windows Radio: Electronically Tuned AM/FM Stereo w/Seek and Scan, Stereo Cassette Tape Player and Digital Clock					•	•
Preferred Equipment Group 5 Electronic Speed Control with Resume Speed Intermittent Windshield Wiper System						•
Preferred Equipment Group 6						•

Individually Available Options

- Air conditioning
- Floor mats, color-keyed front and rear
- Radio: AM/FM Stereo with Seek and Scan, stereo cassette tape player and digital clock
- Steel, electrically powered, sliding sunroof with map light.



The optional, electrically powered, steel sliding sunroof lets the sun shine into your Prizm when you want it to.



Optional Delco AM/FM stereo radio features Seek and Scan, stereo cassette tape player with auto-reverse feature and digital clock.



The optional Geo Prizm air conditioning system is designed to provide both powerful cooling and exceptional ventilation/defrosting.



Optional automatic transmission (3-speed on Geo Prizm and Geo Prizm LSi; 4-speed overdrive on Geo Prizm GSi).



Optional tilt steering wheel adjusts to six different positions.



A rear window wiper/washer is optional on Geo Prizm Hatchback (included on LSi and GSi Hatchback models). Electric rear window defogger is standard on all models.



Power door locks are optional on all Geo Prizm models.



Optional cruise control and intermittent wipers add driving convenience. Stalk-mounted controls.

GEO
METRO



30.2

Geo Metro Coupe makes simple work out of parking and maneuvering, thanks to a short 146.1-inch overall length and tight 30.2-ft. turning circle.

Geo Metro is the fun and frugal way to go. Around town. Around campus. Past gas stations. And into pint-sized parking spaces.

Geo Metro will save you money mile after mile, and Geo Metro has also been designed to go the distance. The peppy, economical Geo Metro powertrain is proved in millions of owner-driven miles. GM's 3-year/50,000-mile Bumper to Bumper Plus warranty and 6-year/

100,000-mile limited warranty against body rust-through is standard.*

Look out, utilitarian econoboxes offering limited choices! The Geo Metro has an expansive outlook on practicality with the choice of a very low-priced XFi Hatchback Coupe, a high-style mid-level Hatchback Coupe and Hatchback Sedan, and a top-of-the-line LSi Hatchback Coupe and LSi Hatchback Sedan.

*See your dealer for terms of this limited warranty.

Geo Metro Coupe with optional Sport Stripping.



Geo Metro may be small on the outside, but it offers surprising room for four people and their cargo. A fold-down rear seat and swing-up rear hatch add to the convenience of all models.



GEO METRO **XFi COUPE**

Geo Metro XFi Coupe is the lowest-priced Geo you can buy. And beyond sheer affordability, the Geo Metro XFi Coupe makes lots of sense for lots of reasons.

This space-efficient Coupe offers seating for four adults, a fold-down rear seat and up to 29.1 cu. ft. of cargo space, accessible through a swing-up rear hatch.

For all its interior room, Geo Metro XFi is a nimble, highly maneuverable automobile. Geo Metro XFi is also one of America's fuel-efficiency leaders (**EPA estimated 53 MPG city, 58 MPG highway**), thanks to an advanced three-cylinder engine with Electronic Fuel Injection.

The advanced engineering features of Geo Metro XFi include front drive, four-wheel independent suspension, 5-speed manual transmission and rack-and-pinion steering.

Distinctive design details of Geo Metro XFi include a highly aerodynamic shape with flush glass, a dramatically low hood line and smoothly integrated wraparound front and rear bumpers.

So if you're looking for a fun-to-drive, common-sense runabout, Geo Metro XFi Coupe is looking for you.

Geo Metro XFi Coupe.

Geo Metro XFi Coupe's standard cloth-and-vinyl front bucket seats are fully reclining and the rear seat folds flat for additional storage.



GEO METRO

The regular Geo Metro shown here is the sporty, stylish step up from the XFi Coupe. Selecting this Geo Metro also gives you one more option: the choice of two doors or four.

In addition to four-door convenience, the Geo Metro Hatchback Sedan features a slightly higher roof line for enhanced rear seat head room, and the car rides on a 3.9-inch longer wheelbase.

This value-packed Geo Metro series includes all the following upgrades from Geo Metro XFi Coupe:

- Color-coordinated upper front and rear bumpers.
- Black body-side moldings.
- Full wheel covers.
- Dual sport mirrors.
- Black-accented center pillar.
- Sport Striping (optional).
- Intermittent wipers.



Geo Metro Hatchback Sedan with optional Sport Striping.

Geo Metro instrument panel with optional Delco AM/FM stereo radio.



Geo Metro Hatchback Coupe with optional Sport Striping.



Geo Metro LSi Hatchback Sedan.

GEO METRO LSi

LSi is the Geo Metro with decidedly upscale interior and exterior appointments. Choose from a Hatchback Sedan or a Hatchback Coupe.

Both LSi Coupe and LSi Sedan models have a distinctive exterior appearance, with flush-fitting composite halogen headlamps, body-color bumpers, body-color side moldings, black-accented exterior trim, dual sport mirrors and full wheel covers.

The inviting LSi interior includes custom duo-tone cloth bucket seats, cloth door panel trim, dual door storage pockets, intermittent wipers and a split-folding rear seat.

And that's not all. Geo Metro LSi lets you choose from a wide variety of options, including automatic transmission and Delco AM/FM stereo sound systems. For the complete list, just turn the page.

The LSi interior features custom fabrics and a split-folding rear seat.



Geo Metro LSi Hatchback Coupe.



STANDARD FEATURES

STANDARD EQUIPMENT



BUMPER TO BUMPER PLUS
3 YEAR/50,000 MILE WARRANTY
Chevrolet's best warranty ever. See the inside back cover of this brochure for details. And see your Chevrolet dealer for complete terms and conditions of this limited warranty.

- 1.0 Liter L3 engine with Electronic Fuel Injection
- 10.6-gallon fuel tank
- P145/80R-12 all-season steel-belted radial tires
- Color-keyed instrument panel
- Five-speed manual transmission with 5th gear overdrive
- Fully independent suspension

- High-back reclining front seats
- Interior lamp with 3-position switch
- Luggage-area and load-floor carpet
- Power front disc/rear drum brakes
- Rack-and-pinion steering.

GEO METRO XFI EQUIPMENT

Equipment specific to XFi models includes:

- Argent color styled steel wheels
- Black bumpers, front and rear
- Cloth-and-vinyl seat trim
- Full folding rear seat-back
- Rectangular headlamps

- Vinyl door pocket (driver's side).

GEO METRO EQUIPMENT

In addition to or replacing XFi equipment, every regular Geo Metro includes:

- Black body-side moldings
- Dual exterior rearview mirrors, driver's side remote
- Front and rear bumpers with body color on upper portion
- Full wheel covers
- Intermittent windshield wipers.

GEO METRO LSi EQUIPMENT

In addition to or replacing regular Geo Metro equipment, every LSi includes:

- Body-color bumpers
- Body-color body-side moldings
- Cigarette lighter
- Composite halogen headlamps
- Custom Cloth interior
- Day/night inside rearview mirror
- Deluxe steering wheel
- Dual large door pockets
- Rear window defogger
- Remote hatch release
- Split-folding rear seat.



A wide-opening rear hatch and fold-down rear seat are standard convenience features on all Geo Metro models.



Reclining front bucket seat with integral head restraint.



Geo Metro's standard 1.0-liter 3-cylinder engine features Electronic Fuel Injection for lively response and excellent drivability.



Swing-out rear quarter windows are standard on all coupes.



The smooth-shifting 5-speed manual transmission offers 4th and 5th gear overdrive for low-RPM highway cruising.

Exterior Colors

White

Silver Metallic*

Bright Blue Metallic

Bright Red*

*Not available on XFi.

OPTIONS

GEO METRO OPTIONS

Geo Metro features optional Preferred Equipment Groups to help simplify the buying process. Choose the package containing the equipment you desire, then select from the list of individually available options that follows. It's that simple.

Preferred Equipment Groups: Geo Metro XFi Hatchback Coupe

	1	2
Preferred Equipment Group 1		
Engine: 1.0 Liter with EFI	•	
Transmission: 5-Speed Manual	•	
Tires: P145/80R-12 All-Season Steel-Belted Radial Ply Blackwall	•	
Preferred Equipment Group 2		
Engine: 1.0 Liter with EFI	•	
Transmission: 5-Speed Manual	•	
Tires: P145/80R-12 All-Season Steel-Belted Radial Ply Blackwall	•	
Electric Rear Window Defogger	•	

Preferred Equipment Groups: Geo Metro Coupe/Sedan

	1	2	3	4
Preferred Equipment Group 1				
Engine: 1.0 Liter with EFI	•	•	•	•
Transmission: 5-Speed Manual	•	•	•	•
Tires: P145/80R-12 All-Season Steel-Belted Radial Ply Blackwall	•	•	•	•
Preferred Equipment Group 2				
Radio: Electronically Tuned AM/FM Stereo w/Seek and Scan and Digital Clock			•	•
Electric Rear Window Defogger			•	•
Rear Window Wiper/Washer			•	•
Preferred Equipment Group 3				
Automatic Transmission				•
Preferred Equipment Group 4				

GEO METRO

Preferred Equipment Groups: Geo Metro LSi; Coupe/Sedan

	1	2	3	4
Preferred Equipment Group 1				
Engine: 1.0 Liter with EFI	•	•	•	•
Transmission: 5-Speed Manual	•	•	•	•
Tires: P145/80R-12 All-Season Steel-Belted Radial Ply Blackwall	•	•	•	•
Electric Rear Window Defogger	•	•	•	•
Preferred Equipment Group 2				
Console w/Storage and Cup Holder		•		•
Radio: Electronically Tuned AM/FM Stereo w/Seek and Scan and Digital Clock			•	•
Rear Window Wiper/Washer			•	•
Preferred Equipment Group 3				
Automatic Transmission				•
Preferred Equipment Group 4				

Individually Available Options

- Air conditioning (NA on XFi)
- Body-side moldings, narrow (XFi Coupe)
- Console with storage and cup holders (LSi only)
- Floor mats, front and rear, color-keyed
- Mirrors: RH manual (XFi)
- Mud guards, front and rear
- Rear window defogger
- Rear window wiper/washer (NA on XFi)
- Radio Equipment:
 - Electronically tuned AM/FM stereo with Seek and Scan, dual front and rear speakers and digital clock
 - Electronically tuned AM/FM stereo radio with Seek and Scan, stereo cassette tape player, dual



Standard full wheel covers (Metro and LSi).



Rear window wiper/washer is optional on Metro and LSi models (NA XFi).



AM/FM stereo with Seek and Scan, cassette tape player and digital clock.

A 3-speed automatic transmission is available, depending on Preferred Equipment Group selected (NA XFi).



GEO
TRACKER



Geo Tracker is the four-wheeling fun machine with the high-energy personality that will take you where you want to go.

Tracker starts with styling that says "fun," the choice of closed or convertible models and a suspension that's built rugged for off-road adventure.

And in the city, Geo Tracker is maneuverable and easy to

get around in, thanks to a solid 86.6-inch wheelbase and short 142.5-inch overall length. The wide stance provides excellent stability.

Choose from four models: Geo Tracker, Geo Tracker Convertible, the up-level Geo Tracker LSi and new Geo Tracker LSi Convertible.

Geo Tracker LSi Convertible.



The LSi interior offers a sporty yet comfortable environment for traveling. The rear bucket seats have a "fold, flip and stow" feature for added cargo-carrying capacity.



GEO TRACKER

Just because Geo Tracker has a light-hearted attitude doesn't mean there's anything frivolous about its capabilities. This is one truck-tough 4x4.

Geo Tracker specifications tell the story:

- A 1.6 Liter four-cylinder overhead cam engine with Electronic Fuel Injection provides generous low-end torque and excellent response at higher speeds.
- Standard 5-speed manual transmission and four-wheel drive with manual locking front hubs and two-speed transfer case provide the go-power.
- Big P205/75R-15 on-/off-road type tires provide the traction.
- Geo Tracker is built on a rugged ladder-type frame with heavy-duty MacPherson strut independent front suspension, trailing-arm solid axle rear suspension and coil springs at all four corners. Ground clearance is 7.9 inches.

The standard Geo Tracker is available as a closed two-door model with steel roof or as a convertible. Both models feature a full complement of standard features, including:

- Composite halogen headlamps.
- Gage package with tachometer.
- Power front disc/rear drum brakes.
- Dual outside rearview mirrors.
- Front and rear bumper rub strips and body-side moldings.
- A full-size, outside-mounted spare tire with lock.

4X4 DRIVING TIPS

Geo Tracker is a fun-to-drive 4x4 vehicle designed to travel where regular passenger cars wouldn't dare. And although Geo Tracker has been designed with a wide track and wide stance, its versatile nature and high ground clearance also mean that it will handle somewhat differently from a passenger car, especially after you have left our North American road system.

Please drive your Geo Tracker with care on-road or off-road. Make sure you and your passengers always wear safety belts. When off-roading, stay on marked trails and do your part to keep America beautiful by always treating our environment with respect. Ask your dealer for A Guide to 4x4 Driving With Geo Tracker before traveling off-road in your Geo Tracker.

More information on Geo Tracker's on-road and off-road capabilities may be found in the owner's manual. Please read it before you drive your new Geo Tracker. It's filled with helpful tips and facts on safer driving.

The steel-roofed Geo Tracker includes standard electric rear window defogger and swing-out rear side windows. Optional spare tire cover shown.

Geo Tracker Convertible.





GEO TRACKER LSi

LSi is the frosting on the 4x4 cake. This upscale Tracker has a few more comfort and convenience features, a bit plusher interior and a dressier exterior with chrome Rally Wheels.

Geo Tracker LSi is available as a steel-top or convertible. Both LSi models offer the following standard equipment:

- Automatic locking hubs so you can shift in and out of four-wheel drive without getting out of the vehicle.
- A comfortable Custom Cloth interior (see pages 44-45 for LSi interior details).
- AM/FM stereo radio.
- Front and rear floor mats.
- Intermittent windshield wipers and rear window wiper/washer (except Convertible).
- Tinted glass.
- Spare tire cover.
- Chrome Rally Wheels and white-lettered on-/off-road tires.



Geo Tracker LSi.



GEO TRACKER

Although Geo Tracker is a quality-built 4x4 truck, the Geo Tracker interior is anything but trucklike.

Every Geo Tracker offers comfortable seating for four people, plus all the following:

- Cloth/vinyl reclining front bucket seats with integral head restraints.
- Over 32 cu. ft. of cargo space with the rear seat stowed forward.
- Analog instrumentation with tachometer, temperature gage and trip odometer.
- Heavy-duty heater/defroster with 4-speed fan and side window defoggers.
- Stowage trays, lockable glove box and three passenger-assist handles.

Geo Tracker LSi offers an even sportier interior appearance with Custom Cloth trim, reclining front and rear bucket seats with flip-fold-and-stow feature, intermittent wipers and tinted glass.



Geo Tracker interior.

Geo Tracker LSi interior.

The LSi features standard gage package with tachometer and optional AM/FM stereo radio cassette tape player and digital clock.



STANDARD FEATURES



Chevrolet's best warranty ever. See the inside back cover of this brochure for details. And see your Chevrolet dealer for complete terms and conditions of this limited warranty.

GEO TRACKER STANDARD FEATURES

- 1.6 Liter engine with single overhead camshaft and Electronic Fuel Injection
- 5-speed manual transmission with overdrive
- 4-wheel drive with manual locking front hubs
- 11.1-gallon fuel tank
- Analog instrument cluster with tachometer, temperature gage and trip odometer
- Body-color wraparound front and rear bumpers
- Body-side moldings
- Cloth-and-vinyl seats
- Composite halogen headlamps
- Day/night inside rear-view mirror
- Dual sport mirrors
- Floor console with coin storage
- Flip, fold and stow rear bench seat
- Front stabilizer bar
- Full carpeting, including cargo area
- Full coil suspension
- Full-size swing-out lockable spare tire

- High-back reclining front bucket seats with easy-entry feature for rear-seat passengers
- Interior dome lamp
- Lockable glove box
- Power front disc/rear drum brakes
- Side window defoggers
- Swing-open, right-hand hinged tailgate
- Tires, P205/75R-15 on-/off-road type
- Tow hooks, front and rear.



Reclining front bucket seats are standard on all models.

GEO TRACKER LSI EQUIPMENT

In addition to or replacing Geo Tracker equipment

- Automatic locking front hubs
- AM/FM stereo radio with Seek and Scan and digital clock
- Chrome Rally Wheels
- Custom Cloth interior
- Floor mats, front and rear
- Flip, fold and stow rear bucket seats with recline feature
- Intermittent wipers
- Rear window wiper/washer (NA LSi Convertible)
- Reclining front bucket seats with "see-through" adjustable head restraints
- Spare tire cover
- Tinted glass
- White-lettered on-/off-road tires.



Geo Tracker models feature four-wheel drive with manually locking hubs (automatic locking hubs on Geo Tracker LSi) for selection of 2WD or 4x4 operating modes. The console-mounted transfer case shift lever allows selection of 4-Low or 4-High gear ratios.

Dimensions (in.)

	Geo Tracker	Geo Tracker Convertible
Wheelbase	86.6	86.6
Length (overall)	142.5	142.5
Width (overall)	64.2	64.2
Height (loaded)	65.0	65.0
Cargo Volume (cu. ft.)	8.7*	8.9†
Fuel Tank Capacity (gals.)	11.1	11.1

*31.9 with rear seat down.
†32.1 with rear seat down.

GEO TRACKER

Geo Tracker's center console is both stylish and functional. Standard features shown include heater/defroster with power ventilation and 4-speed fan, cigarette lighter and ashtray, coin storage and 5-speed manual transmission.



Headlamp control is conveniently located on turn signal stalk.

Exterior Colors



White



Silver Metallic



Black



Bright Blue Metallic



Red

15" wheels and on-/off-road tires are standard on all Geo Tracker models.



Geo Tracker Convertible's 2-position soft top is available in black or white, depending on exterior color selected.



Geo Tracker features a side-opening rear door with glass rear window and electric window defogger.



Side window defoggers are a standard convenience you'll appreciate.

OPTIONS

GEO TRACKER

In addition to LSi equipment, there are a number of options available on all Geo Tracker models, including:

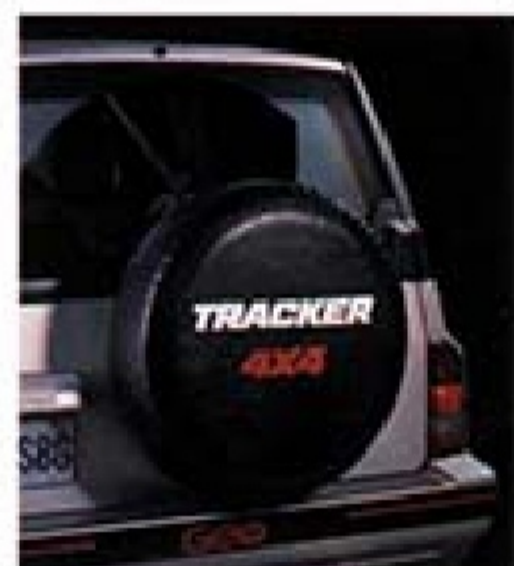
- Automatic transmission
- Air conditioning
- Delco AM/FM stereo radio with Seek and Scan and digital clock (included with LSi)
- Delco AM/FM stereo radio with Seek and Scan, stereo cassette tape player and digital clock
- Floor mats, front and rear (included with LSi)
- Front differential and transfer case shield plates
- Light-duty trailer hitch with wiring harness
- Spare tire cover (included with LSi).



Choose from two optional music systems. The Delco AM/FM stereo with Seek and Scan, cassette tape player and digital clock is shown here.



Intermittent windshield wiper control. Standard on LSi models.



The optional rear-mounted spare tire cover adds a fashionable touch. Standard on LSi models.



Chrome Rally Wheels. Standard on LSi models.

Optional automatic transmission, Delco AM/FM stereo music system and air conditioning controls are housed in a high-style center console.



1990 GEO PASSENGER CAR SAFETY FEATURES

Occupant Protection

- Automatic safety belt system for driver and right front passenger (Geo Prizm, Geo Metro) OR Supplemental Inflatable Restraint system, driver only, with manual lap/shoulder safety belts for the driver and right front passenger (Geo Storm)
- Manual lap/shoulder safety belts, outboard rear seat positions
- Manual lap safety belts, center front/rear seat positions, where applicable
- Energy-absorbing steering column
- Energy-absorbing instrument panel
- Energy-absorbing seat-back tops, front
- Interlocking door latches
- Side-guard door beam
- Passenger-guard inside door lock handles
- Inertia-locking, folding front seat-backs, two-door models (manual release on Geo Metro)
- Safety armrests
- Head restraints, driver and right front passenger (adjustable or integral)
- Break-away inside rear-view mirrors
- Security door locks and door retention components.

Accident Avoidance

- Side marker lights and reflectors
- Parking lamps that illuminate with headlamps
- Four-way hazard warning flasher
- Back-up lights
- Center high-mounted stop lamp
- Directional signal control with lane change feature
- Windshield defroster, washer and multi-speed wipers
- Inside rearview mirror
- Outside left rearview mirror
- Brake system with dual master cylinder and warning light
- Starter safety switch
- Dual action hood latch
- Low-glare finish on inside windshield moldings, wiper arms and blades, metallic steering wheel surfaces
- Illuminated heater and defroster controls
- Illuminated windshield wiper and washer controls
- Tires with built-in tread wear indicators.

Theft Deterrence

- Audible reminder for ignition key removal
- Theft deterrent steering column lock
- Visible vehicle identification number.

IMPORTANT: A Word About This Catalog.

We have tried to make this catalog as comprehensive and factual as possible. We reserve the right, however, to make changes at any time, without notice, in prices, colors, materials, equipment, specifications, models and availability. Since some information may have been updated since the time of printing, please check with your Chevrolet dealer for complete details.

A Word About Engines.

Chevrolets are equipped with engines produced by different operating units of GM, its subsidiaries or suppliers to GM worldwide.

A Word About Assembly.

Chevrolets are assembled by different operating units of General Motors, its subsidiaries or suppliers to GM worldwide. Chevrolets incorporate thousands of components produced by different operating units of GM, its subsidiaries or suppliers to GM worldwide. We sometimes find it necessary to produce Chevrolets with different or differently sourced components than originally scheduled. All such components have been approved for use in Chevrolets and will provide the quality performance associated with the Chevrolet name. Since some options may be unavailable when your vehicle is assembled, we suggest that you verify that your vehicle includes the equipment you ordered, or if there are changes, that they are acceptable to you.

A Word About Updated Service Information.

Chevrolet regularly sends its dealers useful service bulletins about Chevrolet products. Chevrolet monitors product performance in the field. We then prepare bulletins for servicing our products better. Now you can get these bulletins, too. Ask your dealer. To get ordering information, call toll-free 1-800-551-4123.

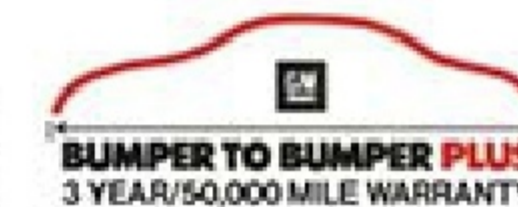
A Word About Corrosion Protection.

Chevrolets are designed and built to resist corrosion. All body sheet metal components are warranted against rust-through corrosion for 6 years/100,000 miles. Application of additional rust inhibiting materials is not required under the corrosion coverage.

At your Chevrolet dealer, financing or leasing your new Geo can be as easy as saying GMAC.

General Motors, GM, the GM emblem, Chevrolet, GEO, and the GEO grille emblem are registered trademarks of the General Motors Corporation. Storm, Prizm, Metro and Tracker are trademarks of the General Motors Corporation. ©1989 General Motors Corporation. All rights reserved.

Let's get it together...buckle up.



GM's 3-year/50,000-mile limited warranty covers repairs for the 1990 Geo including labor and parts, to correct any defects in material or workmanship occurring during the warranty period. After the first year or 12,000 miles, there is a \$100 deductible per repair visit. Warranty features include air conditioning repair, towing, no-cost warranty transfer, 6-year/100,000-mile body sheet rust-through protection and 5-year/50,000-mile emission control system coverage. Items not covered include tires (which are covered by their manufacturer) and normal maintenance. See your Chevrolet dealer for terms of this limited warranty.

GET TO KNOW GEO...
A REFRESHING NEW
APPROACH TO QUALITY
IN THE AUTOMOTIVE
MARKETPLACE.



SOLD AND SERVICED
AT CHEVROLET/GEO
DEALERS.

DEZO'S GARAGE

