

THE TOYOTA TOUCH

The Toyota Touch is our commitment to your total satisfaction. And a simple way of saying we want all your experiences with Toyota to be the very best.

The Toyota Touch begins with quality—in the design and production of each and every new vehicle. From drawing board to final delivery—hard work, attention to detail and intense personal pride are the rules, rather than the exceptions.

The Toyota Touch is further evidenced at each dealership, where our salespeople are known for their courtesy and integrity.

Where our Parts and Service personnel are the most conscientious and capable you'll find. Their many years of experience, solidly backed by ongoing programs of product support and technical training, give them in-depth knowledge to give superior service.



WARRANTY INFORMATION

The Toyota Touch means you'll be just as satisfied tomorrow as you are today. This commitment is solidly backed by Toyota's no-nonsense 36-month/36,000-mile basic new vehicle limited warranty, which applies to all components other than the normal wear and maintenance items. Toyota also provides a 60-month/unlimited-mileage corrosion perforation warranty and a 60-month/60,000-mile powertrain warranty. In addition, there may be times when Toyota will establish a special policy adjustment that will pay for all or a part of the repair costs beyond normal warranty coverage.

Should you have any questions about Toyota vehicles, warranties, special policy adjustments or service, please contact the Customer Relations Manager at your local Toyota dealer. For additional information, you may also call Toyota's Customer Assistance Center at 1-800-331-4331—Mon.-Fri., 9 a.m. to 9 p.m., EST. After all, when you make such a major commitment, Toyota is ready to make a major commitment to you.

LIMITED WARRANTY SUMMARY

Comprehensive coverage	36-month or 36,000-mile
Powertrain	60-month or 60,000-mile
Corrosion perforation	60-month and unlimited-mileage

Get More From Life...Buckle Up!

PCD-005 (9/89) 00616-90103
Litho in U.S.A. (3051)
© 1989 Toyota Motor Sales, U.S.A., Inc.

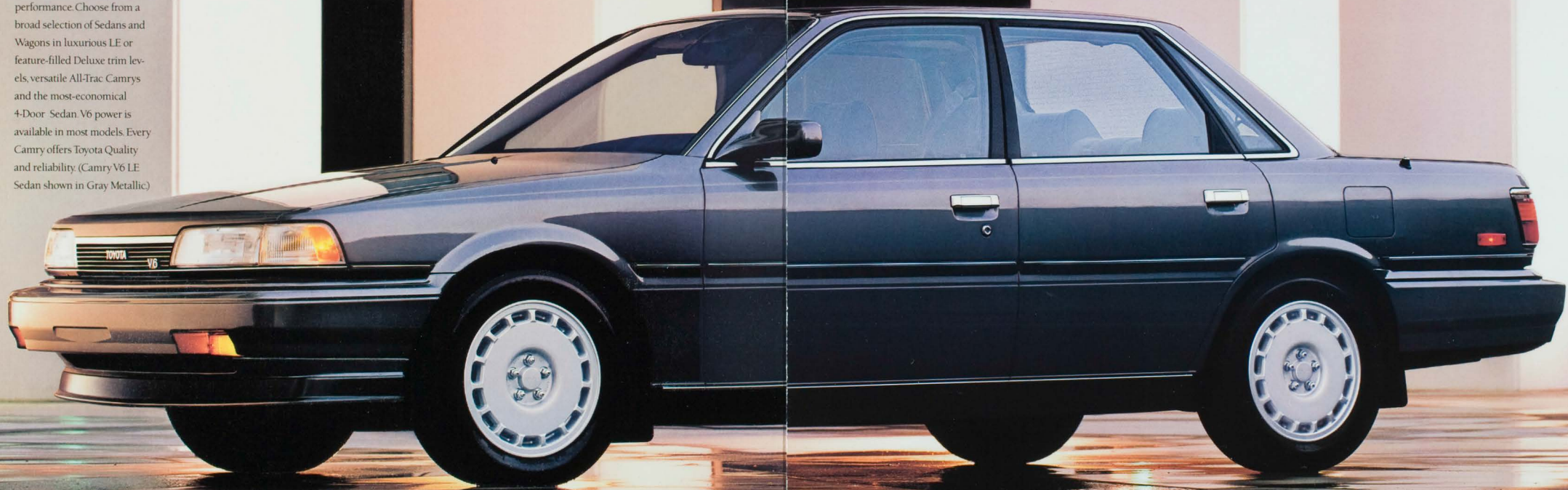


TOYOTA

TOYOTA
"I love what you do for me."

'9 0 C A M R Y

As Toyota's most popular model, the Camry defines new standards for comfort, quality, style and performance. Choose from a broad selection of Sedans and Wagons in luxurious LE or feature-filled Deluxe trim levels, versatile All-Trac Camrys and the most-economical 4-Door Sedan V6 power is available in most models. Every Camry offers Toyota Quality and reliability. (Camry V6 LE Sedan shown in Gray Metallic)



Shown with optional equipment.

S O P H I S T I C A T E D



L U X U R I O U S

Covered with rich fabric, the Camry LE interior is both spacious and stylish. Its soft, reclining front bucket seats and contoured rear seats with integrated headrests are designed to support your body in comfort. Every detail has been designed with the consumer in mind. Conveniences include a center console with two storage compartments, folding rear-seat armrest, and three-point seat belts for rear-seat passengers in the outboard positions. And for the driver, there's the optional seven-way adjustable power seat, with its three-way lumbar support and seat cushion front and rear height adjustment for extra comfort on long trips. (Interior shown in Gray.)
Shown with optional equipment.

Its aggressive aerodynamic styling, and elegant, comfortable interior make Camry LE irresistible.



Camry's analog instrumentation and dash controls are ergonomically styled for easy operation. A deluxe AM/FM stereo electronic-tuning radio is standard on Camry LE.

The 1990 Camry V6 LE Sedan illustrates how advanced engineering, refined styling and superior performance combine to give the essential quality that is the hallmark of every Toyota. Camry's sophisticated style is more than just great-looking; reduced wind resistance was achieved by careful refinement in its design. LE models also feature stylish integrated color-



The quiet luxury of the Camry LE interior features optional supple leather trim and deeply contoured seats.

keyed bumpers and aerodynamic mirrors for that refined sports-sedan look.

When you need extra room, but still want an elegant, comfortable vehicle, the Camry V6 LE Wagon is the answer for your family's dreams. Velour seats, variable-assist power steering, deluxe AM/FM stereo electronic-tuning radio with power antenna and six speakers, 60/40 split rear seatbacks, and ample cargo storage (with cargo cover) are among the standard items that make owning a Camry V6 LE Wagon one of life's pleasures. An optional Power Package adds power windows and door locks, and dual illuminated visor vanity mirrors.

Camry LE's advanced multi-valve engines deliver plenty of power. Both the 2.5-liter V6 and 2.0-liter four-cylinder engines achieve rewarding performance for long-distance touring. The sophisticated V6 engine has four overhead camshafts and 24 valves for truly exhilarating performance.

Camry offers excellent space and comfort for the family in both the LE Sedan and the V6 LE Wagon. (Sedan shown in Ice Blue Pearl; Wagon shown in Silver Metallic.)

Shown with optional equipment.

U N C O M P R O M I S I N G





Camry Deluxe Sedan offers an attractive combination of style and comfort for five. (Shown in Dark Blue Pearl Metallic.)

Camry Deluxe Wagons are the perfect accommodation for a growing family's active lifestyle. (Shown in Ice Blue Pearl.)



Toyota Camry Deluxe Sedans and Wagons have a long list of standard comfort features. With a choice of two sophisticated powerplants and sleek aerodynamic design, Camry Deluxe offers continuing satisfaction.

The affordable Camry Deluxe has reclining front bucket seats covered in attractive cloth and conveniences like a center console with armrest, an electric rear window defogger with timer, child-protector rear door locks, and a full-size spare tire. In the Camry, low liftover design eases loading and unloading parcels from the trunk, and a cargo cover on the Wagon helps keep your parcels out of sight.

With Camry Deluxe, you enjoy a standard 2.0-liter twin-cam 16-valve EFI engine. Or choose the 2.5-liter 24-valve V6 for either Deluxe Sedan or Wagon. Whichever engine,

power flow is delivered through an optional electronically controlled four-speed automatic overdrive transmission. A five-speed manual transmission is standard on the Sedan.

Camry's distinctive shape makes it efficient* and quiet on the road. It's all part of the engineering skill and quality

construction that went into giving Camry the solid feel of a far more expensive automobile.

*See mileage statement on page 16 for details.

Shown with optional equipment.



Camry Deluxe interiors are comfortable, spacious and well-appointed in fashionable fabrics. (Shown in Blue cloth.)

E X C E P T I O N A L

For additional peace of mind in inclement weather, Camry offers the added braking control of an Anti-lock Brake System (ABS) and the added traction of All-Trac all-wheel drive.



Camry's Anti-lock Brake System (ABS) helps prevent wheel lockup on slippery surfaces.

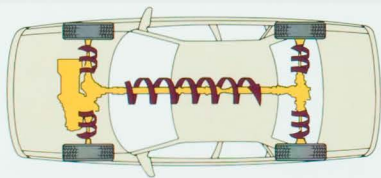
For greater versatility in inclement weather, choose either the sophisticated Camry All-Trac LE or Deluxe Sedan. Furthermore, the added peace of mind of a precise Anti-lock Brake System (ABS) is available on Camry All-Trac LE and LE Sedans equipped with the V6 engine.

Camry's sophisticated All-Trac all-wheel drive system applies power from the engine and controls the distribution of the power to provide greatly improved traction and stability on wet or snow-covered road

surfaces or other less-than-favorable road conditions. On All-Trac Camrys equipped with automatic transmissions*, All-Trac features an automatic center differential. This sensitive All-Trac system can tell when either the front or rear wheels have lost traction. Ordinarily, those wheels would just spin, but with this system, power is redistributed between the front and rear to help regain normal traction. As a result, Camry All-Trac all-wheel drive with an automatic transmission makes the best possible use of

Camry's sophisticated power.

Camry's optional Anti-lock Brake System uses sensors to measure the speed of the wheels. When the beginning of lockup is detected (one wheel rotates much more slowly than the others), ABS modifies system pressure, and helps maintain traction during braking, while allowing the slow wheel to regain its rotating speed. An additional advantage is that ABS helps prevent skidding and loss of steering control.



The All-Trac system provides a controlled flow of power to all four wheels for enhanced control while accelerating and turning.

All-Trac combines with Toyota's Anti-lock Brake System (ABS) to make this Camry versatile. (Shown in Sandalwood Metallic.)

*Standard on All-Trac LE, optional on All-Trac Deluxe.

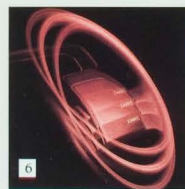
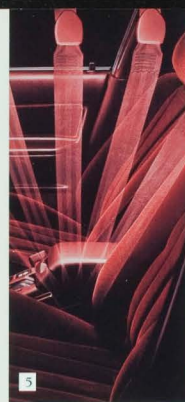
For further information on features and options, see page 15 for details.

Shown with optional equipment.

V E R S A T I L E



Camrys are generously equipped with many standard features to enhance your driving pleasure.



1 Standard 4-Door Camry Sedans, the most affordable Camrys, have a wide range of features, including tinted glass, variable-assist power steering and a center console. (Shown in Mahogany Pearl.)

2 This deluxe AM/FM stereo electronic-tuning radio offers you full, rich sound from four speakers on LE Sedans. On LE Wagons, the radio is equipped with six speakers.

3 Camrys are filled with convenient features such as this handy console-mounted dual cup holder.

4 LE Sedan 60/40 split rear seatbacks (with security locks) provide access to Camry's large trunk space while still retaining rear seating for passengers. (Optional on Deluxe Camry)

5 Camrys have automatic retracting shoulder belts with manual lap belts in front, three-point seat belts in the rear outboard positions, and child-

protector rear door locks to help enhance your peace of mind while driving.

6 LE and Deluxe Camrys have a tilt steering wheel with memory. You can set your most comfortable driving position, then change and return to it easily. (Optional on Camry standard 4-Door Sedan.)

7 A Camry Wagon's storage area is fully carpeted. Standard 60/40 split rear seatbacks let you carry cargo and two rear-seat passengers at the same time. A rear cargo cover helps protect your belongings.

8 V6 Sedans and Wagons offer this attractive full wheel cover as standard equipment.

9 A fuel-efficient "Normal" mode and responsive "Power" mode are standard when you choose an electronically controlled four-speed automatic overdrive transmission.

10 LE and Deluxe models have a convenient full-size spare tire that doesn't intrude into the flat cargo area.

11 V6 Deluxe and LE Sedans and Wagons are powered by a four-camshaft, 24-valve EFI engine that produces 156 horsepower for outstanding performance and responsiveness.

12 The Sedan's efficient engine design and aerodynamic shape provide outstanding fuel economy: up to 34 mpg on the highway and 26 mpg in city driving.* As a result, Camry is an ideal car for extended trips.

*See mileage statement on page 16 for details.

For further information on features and options, see page 15.

Shown with optional equipment.

F E A T U R E S



1



2



3



4



5



6



7



8

OPTION S

1 This digital compact disc deck delivers full-dimensional concert-hall sound.

2 You'll thrill to an entirely new dimension of genuine Toyota Quality sound with this premium AM/FM stereo electronic-tuning radio with cassette. Sedans have four speakers, while Wagons have six. An automatic power antenna is included with the radio.

3 Convenient electronically operated cruise control is available on all Camry models.

4 Help protect against forced entry with Camry's sophisticated Vehicle Security System.

5 The Camry Wagon roof rack enhances Camry's sporty styling and also provides additional carrying capability.

6 Power windows, door locks with integrated wagon tailgate lock are part of the desirable Power Package.

7 Camry LE's optional push-button-operated air conditioning makes even the longest trips comfortable for all in hot weather.

8 Nice days become nicer with a power glass moonroof with sliding sunshade and integrated maplight.



FABRICS

INTERIOR TRIM LEVEL	COLORS
LE Leather	Blue, Gray,* Maroon
LE Cloth	Beige, Blue, Gray, Maroon
Standard/Deluxe Cloth	Beige, Blue, Gray, Maroon

COLORS

EXTERIOR	INTERIOR	EXTERIOR	INTERIOR
Super White	Beige, Blue	Medium Red Pearl	Gray, Maroon
Silver Metallic	Blue, Gray	Dark Red Pearl	Gray, Maroon
Gray Metallic	Gray, Maroon	Black	Gray, Maroon
Ice Blue Pearl	Blue		
Dark Blue Pearl Metallic	Blue		
Sandalwood Metallic	Beige		
Mahogany Pearl	Beige		

*Available early 1990

COLORS



MECHANICAL FEATURES

	V6 LE Sdn./ Wgn.	V6 Dlx. Sdn./ Wgn.	LE Sdn.	Dlx. Sdn./ Wgn.	4-Dr. Sdn.	All- Trac LE Sdn.	All- Trac Dlx. Sdn.
2.0-liter 4-cylinder twin-cam 16-valve engine	—	—	S	S	S	S	S
2.5-liter four-cam 24-valve V6 engine	S	S	—	—	—	—	—
Electronic fuel injection	S	S	S	S	S	S	S
Engine knock sensor	S	S	—	—	—	—	—
Front-wheel drive	S	S	S	S	S	—	—
All-wheel drive	—	—	—	—	—	S	S
5-speed manual transmission	—	S ¹	—	S ¹	S	—	S
Electronically controlled 4-speed automatic transmission	S	S ²	S	S ²	S ³	S	O
Rack-and-pinion steering with variable power assist	S	S	S	S	S	S	S
Anti-lock Brake System (ABS)	O	—	—	—	—	O	—
Front ventilated disc brakes	S	S	S	S	S	S	S
Rear disc brakes	S	S	—	—	—	S	S
Rear drum brakes	—	—	S	S	S	—	—
Full-size spare tire with steel wheel	S	S	S	S	O	S	S

EXTERIOR STYLING

	V6 LE Sdn./ Wgn.	V6 Dlx. Sdn./ Wgn.	LE Sdn.	Dlx. Sdn./ Wgn.	4-Dr. Sdn.	All- Trac LE Sdn.	All- Trac Dlx. Sdn.
Color-keyed front and rear bumpers	S	—	S	—	—	S	—
Aero-style halogen headlamps	S	S	S	S	S	S	S
Semi-concealed windshield wipers	S	S	S	S	S	S	S
Dual manual remote-controlled outside mirrors	—	S	—	S	S	—	S
Dual power color-keyed remote-controlled outside mirrors	S	—	S	—	—	S	—
Aluminum alloy wheels with black mudguards	O	—	O	—	—	O	—
Full wheel covers	S	S	S	S	—	S	S
Mudguards	O	O	O	O	O	S	S

INTERIOR FEATURES

	V6 LE Sdn./ Wgn.	V6 Dlx. Sdn./ Wgn.	LE Sdn.	Dlx. Sdn./ Wgn.	4-Dr. Sdn.	All- Trac LE Sdn.	All- Trac Dlx. Sdn.
7-way manual front driver's seat	S ⁴	—	S ⁴	—	—	S ⁴	—
5-way manual front driver's seat	—	S	—	S	—	—	S
60/40 contoured fold-down split rear seatbacks with security locks	S	O	S	O	—	S	O
Fabric interior with dual door pockets and integrated door armrest	S	S	S	S	S ⁵	S	S
Full cut-pile carpeting with carpeted trunk cargo area	S	S	S	S	S	S	S
Center console armrest with cover and storage area	S	S	S	S	S	S	S
Dual cup holders	S	S	S	S	S	S	S
Vanity mirror	S	S	S	S	—	S	S
Automatic 2-point passive-restraint shoulder belts with manual lap belts	S	S	S	S	S	S	S
3-point rear seat belts (outboard positions only)	S	S	S	S	S	S	S
Air conditioning	S	O	O	O	O	O	O
Rear window defogger with timer	S	S	S	S	S	S	S
Tilt steering wheel with memory	S	S	S	S	O ⁶	S	S
Cruise control	O	O	O	O	O	O	O
Child-protector rear door locks	S	S	S	S	S	S	S
Variable intermittent wipers	S	—	S	—	—	S	—
Intermittent wipers with mist control	—	S	—	S	S	—	S
Automatic illuminated entry/exit fade-out system	S	—	S	—	—	S	—
Remote hood, trunk and fuel filler door releases	S	S	S	S	S	S	S
Compact disc deck	O	O	O	O	O	O	O
Deluxe AM/FM stereo electronic-tuning radio with four speakers	S ⁸	O ⁸	S	O ⁸	O	S	O
Deluxe AM/FM stereo electronic-tuning radio with cassette and four speakers	O ⁸	O ⁸	O	O ⁸	O	O	O
Premium AM/FM stereo electronic-tuning radio with cassette and four speakers	O ⁸	—	O	—	—	O	—

PACKAGES

	V6 LE Sdn./ Wgn.	V6 Dlx. Sdn./ Wgn.	LE Sdn.	Dlx. Sdn./ Wgn.	4-Dr. Sdn.	All- Trac LE Sdn.	All- Trac Dlx. Sdn.
Power Package—power windows and door locks	O ⁹	O ^{10,11}	O ⁹	O ^{10,11}	—	O ⁹	O ¹¹
Seat Package—60/40 split rear seatbacks with security lock	S	O	S	O	—	S	O
Sunroof Package—power glass sunroof with sliding sunshade and maplight	O	O ¹²	O	O ¹²	—	O	O ¹²
Power Driver's Seat Package—includes fore/aft and seat cushion front/rear power height adjustments	O	—	O	—	—	O	—
Leather Trim Power Seat Package—power driver's seat, leather seat surfaces, leather trim on doors, headrests, 2-spoke steering wheel and parking brake lever	O ¹³	—	O	—	—	—	—

7. Camry LE's optional push-button-operated air conditioning makes even the longest trips comfortable for all in hot weather.

8. Nice days become nicer with a power glass moonroof with sliding sunshade and integrated maplight.



8

D A T A

S-Standard

O-Optional

—Not available

¹5-speed manual transmission standard on Sedan, not available on Wagon

²Optional on Sedan, standard on Wagon

³Not electronically controlled.

⁴7-way power seat optional.

⁵Vinyl door trim.

⁶Optional with cruise control only.

⁷Includes tilt wheel with memory.

⁸Includes six speakers on Wagon.

⁹Includes dual illuminated vanity mirror.

¹⁰Includes rear cargo cover on Wagon.

¹¹Includes split folding rear seats.

¹²Includes vanity mirror with lid.

¹³Not available on Wagon.

MECHANICAL SPECIFICATIONS

	V6 LE Sdn./ Wgn.	V6 Dlx. Sdn./ Wgn.	LE Sdn.	Dlx. Sdn./ Wgn.	4-Dr. Sdn.	All- Trac LE Sdn.	All- Trac Dlx. Sdn.
Body/frame construction	Unitized body						
Steering type	Variable-assist power rack-and-pinion, collapsible shaft						
Brakes (front)	Power-assisted ventilated disc with audible alert wear indicators						
(rear)	Disc	Drum					Disc
Suspension (front)	MacPherson struts with stabilizer bar (without stabilizer bar on 4-Door Sedan)					All-Trac with MacPherson struts and stabilizer bar	
(rear)	Independent dual link with MacPherson struts with stabilizer bar (without stabilizer bar on 4-Door Sedan)					All-Trac and independent dual link with MacPherson struts and stabilizer bar	
Engine type	6-cylinder four-cam 24-valve EFI		4-cylinder twin-cam 16-valve EFI				
Displacement	2.5 liters (2507cc)		2.0 liters (1998cc)				
Horsepower (SAE net)	156 @ 5600 rpm		115 @ 5200 rpm				
Torque (SAE net)	160 ft.-lbs. @ 4400 rpm		124 ft.-lbs. @ 4400 rpm				

EXTERIOR DIMENSIONS (in.)

	V6 LE Sdn./ Wgn.	V6 Dlx. Sdn./ Wgn.	LE Sdn.	Dlx. Sdn./ Wgn.	4-Dr. Sdn.	All- Trac LE Sdn.	All- Trac Dlx. Sdn.
Wheelbase	102.4	102.4	102.4	102.4	102.4	102.4	102.4
Overall length	182.1/183.1	182.1	182.1/183.1	182.1	182.1	182.1	182.1
Overall width	67.4	67.4	67.4	67.4	67.4	67.4	67.4
Overall height	54.1/54.5	54.1	51.1/54.5	54.1	54.1	54.1	54.1
Tread width (front)	58.3	58.3	58.3	58.3	58.3	58.3	58.3
(rear)	57.1	57.1	57.1	57.1	57.1	57.1	57.1

INTERIOR DIMENSIONS (in.)

	V6 LE Sdn./ Wgn.	V6 Dlx. Sdn./ Wgn.	LE Sdn.	Dlx. Sdn./ Wgn.	4-Dr. Sdn.	All- Trac LE Sdn.	All- Trac Dlx. Sdn.
Head room (front)	37.9/38.2	37.9	37.9/38.2	37.9	37.9	37.9	37.9
(rear)	36.6/37.7	36.6	36.6/37.7	36.6	36.6	36.6	36.6
Leg room (front)	42.9	42.9	42.9	42.9	42.9	42.9	42.9
(rear)	34.4	34.4	34.4	34.4	34.4	34.4	34.4
Shoulder room (front)	54.3	54.3	54.3	54.3	54.3	54.3	54.3
(rear)	53.7	53.7	53.7	53.7	53.7	53.7	53.7

CURB WEIGHT (lbs.)

	V6 LE Sdn./ Wgn.	V6 Dlx. Sdn./ Wgn.	LE Sdn.	Dlx. Sdn./ Wgn.	4-Dr. Sdn.	All- Trac LE Sdn.	All- Trac Dlx. Sdn.
5-speed manual overdrive	—	2965/—	—	2734/—	2690	—	3086
4-speed automatic overdrive	3086/3197	3020/3131	2811	2789/2910	2745	3174	3152

CAPACITIES

	V6 LE Sdn./ Wgn.	V6 Dlx. Sdn./ Wgn.	LE Sdn.	Dlx. Sdn./ Wgn.	4-Dr. Sdn.	All- Trac LE Sdn.	All- Trac Dlx. Sdn.
Luggage capacity, rear seat up (cu. ft.)	146/34.3	146	146/34.3	146	146	146	146
Cargo capacity, rear seat down (cu. ft.)	—/65.2	—	—/65.2	—	—	—	—
Fuel tank capacity (gal.)	15.9	15.9	15.9	15.9	15.9	15.9	15.9

TIRES

Type	V6 LE Sdn./ Wgn.	V6 Dlx. Sdn./ Wgn.	LE Sdn.	Dlx. Sdn./ Wgn.	4-Dr. Sdn.	All- Trac LE Sdn.	All- Trac Dlx. Sdn.
Steel-belted all-season radial blackwall	195/60HR15			Steel-belted all-season radial blackwall 185/70R14			

MILEAGE ESTIMATES*

EPA estimated city MPG/ EPA estimated highway MPG	V6 LE Sdn./ Wgn.	V6 Dlx. Sdn./ Wgn.	LE Sdn.	Dlx. Sdn./ Wgn.	4-Dr. Sdn.	All- Trac LE Sdn.	All- Trac Dlx. Sdn.
5-speed manual overdrive	—	19/26	—	26/34	26/34	22/27	—
4-speed ECT automatic overdrive	19/25	19/25	25/31	25/31	24/31**	21/24	—

TOYOTA WARRANTY

	V6 LE Sdn./ Wgn.	V6 Dlx. Sdn./ Wgn.	LE Sdn.	Dlx. Sdn./ Wgn.	4-Dr. Sdn.	All- Trac LE Sdn.	All- Trac Dlx. Sdn.
36-month/36,000-mile comprehensive new vehicle limited warranty	36-month/36,000-mile comprehensive new vehicle limited warranty						
60-month/60,000-mile powertrain warranty	60-month/60,000-mile powertrain warranty						
60-month/unlimited-mileage corrosion perforation warranty	60-month/unlimited-mileage corrosion perforation warranty						

S P E C S

—Not applicable.

*1990 preliminary mileage figures determined by Toyota. 1990 EPA mileage estimates not available at time of printing. See your Toyota dealer for details.

**ECT not available.

Specifications and equipment based on information available at time of printing and subject to change without notice. Some vehicles shown with optional equipment. For more details on options, accessories and specifications in your area, contact your Toyota dealer.