

1993
COROLLA

Toyota Touch is a philosophy in action. It's our effort to make all your experiences with Toyota the very best. From the time of your initial contact, during the sale and throughout your entire ownership period, our goal is your complete satisfaction.

If you ever have any questions, contact your dealer's Customer Relations Manager. For additional information, call our Customer Assistance Center at 1-800-331-4331 (weekdays 9 a.m. to 9 p.m. EST).

WARRANTY INFORMATION

A 36-month/36,000-mile basic new vehicle limited warranty applies to all components other than normal wear and maintenance items. Additional 60-month limited warranties cover your powertrain (for 60,000 miles) and corrosion perforation (for unlimited miles). See your Toyota dealer for complete details. In addition, there may be times when we will establish a special policy adjustment which will further defray repair costs.

Buckle Up!

Do it for those who love you.

"I love what you do for me."



If you've discovered that you could use more space, or engineering characteristics that afford you peace and quiet, it's time to discover the all-new 1993 Toyota Corolla. Sophisticated and contemporary, the Corolla's new design initiates looks of approval and inspires pride in ownership.

Building on a 25-year tradition of reliability and value, the 1993 Corolla has been totally re-engineered and newly sculpted. The 1.8-liter engine for LE and DX models adds greater performance to a vehicle that is larger and quieter than ever. The all-new Corolla also has a driver-side air bag* standard on all models. The new generation of Toyota quality, dependability and value is here: Discover Corolla...again.

*See page 4 for more information on Corolla's driver-side air bag Supplemental Restraint System (SRS).



4-DOOR SEDAN



4-DOOR DX SEDAN



4-DOOR LE SEDAN



5-DOOR DX WAGON



LE Sedan shown in Pebble Beige Metallic.



COMMITTED TO EXCELLENCE. Most of the Corollas sold in America are built in Toyota's North American production facilities. Workers on this team help ensure that attention to detail goes beyond the expected.

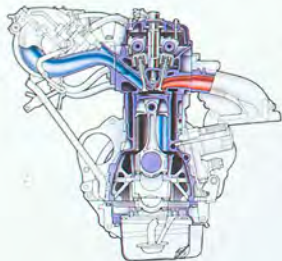


THE VALUES OF A NEW GENERATION. Corolla has many standard safety features. For example, a driver-side air bag Supplemental Restraint System (SRS)* and 3-point seatbelts for all outboard passenger positions are part of Corolla's offerings. Power-assisted ventilated front disc brakes help execute your quick decisions during hard braking, and, for enhanced control during braking in adverse driving conditions, an Anti-lock Brake System (ABS) is available on all mod-

"All these innovations and more..."

els. For all of the safety features found on the new generation of Corolla, perhaps the most significant of all is Toyota's reputation for quality engineering and design.

TRULY UNCOMMON LUXURY. The sophisticated 1993 Toyota Corolla is engineered to reduce interior noise and vibration levels with some innovative features. It's designed with the extensive use of vibration-dampening steel and generous amounts of noise-insulating foam hidden in structural passages to curb noise even further. Corolla's engineers also looked at mechanically transmitted vibrations. To reduce engine vibration a special hydraulic mount is used in conjunction with traditional rigid mounts to support the engine. Even the panel separating the



ANY REQUESTS? The new, more powerful 1.8-liter 4-cylinder 16-valve engine (on DX and LE models) with twin overhead camshafts and electronic fuel injection (EFI) responds to your wishes with 115 hp** and 115 lb.-ft. of torque.



ECONOMIC INFLATION. Advanced safety features should not be limited to just expensive cars. All models of the affordable Corolla lineup come with a standard driver-side air bag Supplemental Restraint System (SRS)* to help further reduce driver injury in the event of a frontal collision.

engine compartment and passenger cell is padded to further reduce noise and vibration. All these innovations and more help to ensure the relaxed comfort and serenity of the quietest Corolla ever.

*The Corolla features a driver-side air bag Supplemental Restraint System (SRS) which activates in a front-end collision of enough magnitude to inflate the bag. In a moderate collision, primary protection is provided by the 3-point lap and shoulder belt system, and the air bag may not inflate. So, safety belts should be worn at all times by all occupants.

**In 49 states only; 110 hp in California.



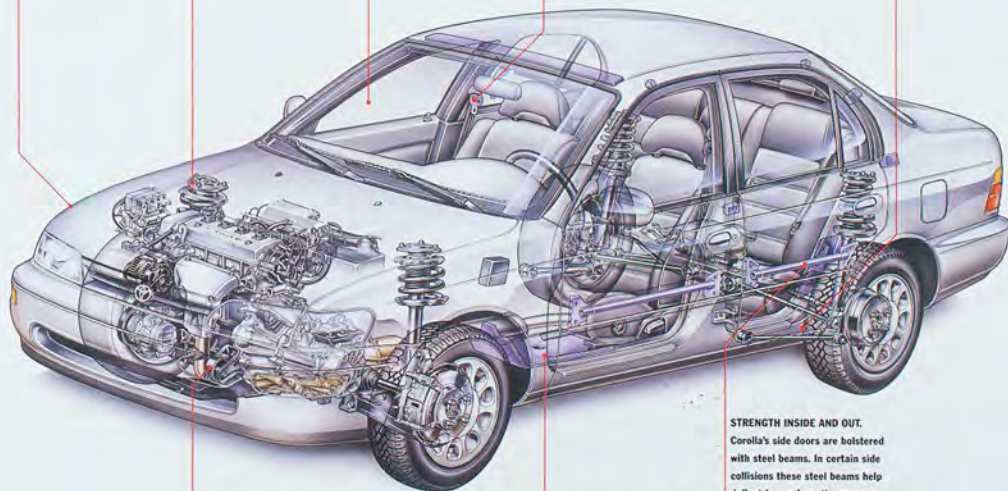
SENSE THE DIFFERENCE. A computer-controlled Anti-lock Brake System (ABS) is optional on all Corollas. ABS uses a computer with front and rear speed sensors to help avoid brake lockup and maintain steering control during sudden stops.

TIGHT AS A DRUM, BUT MUCH QUIETER. All vehicles naturally have space between body panels. However, on the all-new Corolla, body panel gaps have been reduced, maintaining a smooth, cleaner looking surface and more efficient aerodynamics. This flush surface design concept minimizes turbulence and contributes to Corolla's interior tranquility.



IN TUNE WITH TODAY'S MOVEMENTS. Corolla's 4-wheel independent MacPherson strut suspension system allows each wheel to separately absorb road bumps, and it's tuned to provide a balance of ride, comfort and performance.

PRECISION FITTED. Corolla's uncluttered, clean appearance is the result of an uncompromising commitment to aerodynamics. Even glass surfaces are now flush with body parts to smooth out the Corolla's appearance and enhance its wind-cutting efficiency.



MITIGATING CIRCUMSTANCES. To lessen the vibration of the engine, Corolla utilizes a hydraulic engine mount with traditional rigid mounts. Together they help to isolate engine vibration away from Corolla's chassis and therefore enhance ride comfort.



THREE-POINT STANCE. Corolla is equipped with 3-point lap and shoulder safety belt systems in all outboard passenger positions. Front shoulder belts are fitted with adjustable shoulder anchors letting you set the height to enhance your comfort.

ANTI-AGING INNOVATIONS. Corolla's extensive anti-corrosion protection includes the generous use of double-coated galvanized steel which resists rust and provides a better painting surface than conventional galvanized steel. On lower body panels, anti-chip paint is applied to add extra protection to nick-prone areas.

STRENGTH INSIDE AND OUT. Corolla's side doors are bolstered with steel beams. In certain side collisions these steel beams help deflect forces from the passenger compartment. To enhance rigidity and strength, while maintaining a lightweight, high-tensile strength, steel body panels are used in Corolla's construction.

COROLLA'S LATEST COMPOSITION. Corolla's effective sound-dampening material is composed of asphalt and steel. The "sandwich" designed sheets are then placed between the steel body and chassis panels to help minimize vibration and noise.



LE Sedan interior shown in Taupe cloth.



ALTERATIONS DONE HERE. The 3-point front adjustable shoulder belts can be tailored to your height. Just find the proper position for the adjustable anchor, and buckle up in comfort.

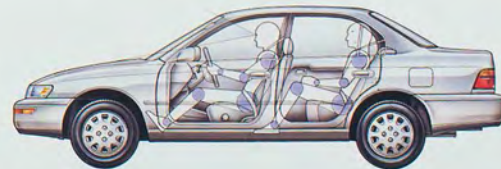
COROLLA EXTENDS ITS SERVICES TO YOU. In any driving situation, comfort and control depend upon one thing—compliance. Inside the all-new Corolla you'll find an environment that surrenders itself completely to passengers and, in particular, the driver. The ergonomically designed dash has been brought closer to the driver so that it sweeps before you, presenting vital information and lending its many features to

“...more than ever, Corolla is at your service.”

your easy operation through natural movements. Gauges are large and legible, and controls are logically arranged: those on the center console are designed to meet your hand's natural movement and touch. For 1993, even Corolla's glove box has been enlarged and its door handle was diplomatically moved to the left for better driver accessibility. With its overall functionality and new interior styling, more than ever, Corolla is at your service.



GETTING SIDE TRACKED. Unlike traditional floor-mount tracks, Corolla's front-seat mounts connect to side tracks leaving more foot room for rear-seat passengers.



THE BIG TIME. For 1993, Corolla is bigger than ever—5 cu. ft. bigger. And with more head, shoulder, hip, leg and foot room for all passengers, that extra room is distributed throughout the cabin for better passenger comfort.



4-Door Sedan shown in Blue Haze Pearl.



DOWN TO EARTH ENGINEERING. The low liftover trunk gives you greater access with less effort, and with 12.7 cu. ft. of cargo capacity you've got the room to carry some pretty bulky objects.



MORE COROLLA MEANS MORE COMFORT. Inside and out the 4-Door Sedan delivers the goods. Its new spacious interior includes reclining front bucket seats and a rear seat that has more cushioning than ever before. The new integrated rear seatbelt buckles are recessed into the seat cushion for a clean, flush appearance. Outside, Corolla's wind-slicing posture is

"...Corolla's pleasing shape: a timeless design, built to last."

maintained by aerodynamic halogen headlamps and semi-concealed windshield wipers for lower air turbulence. Dual black folding outside mirrors, color-keyed bumpers, tinted glass and full wheel covers—



REMOTE CONTROL. Thoughtfully located next to the driver's seat, the remote trunk and fuel-filler door releases let you open these doors from within your Corolla.



BUILT-IN SERVING TRAY. The pull-out dual cup holder typifies Corolla's attention to detail. It's conveniently located in the dash to serve you and a friend.

all these standard features adorn Corolla's pleasing shape: a timeless design, built to last.

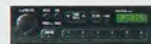
LIKE AN OLD TRUSTED FRIEND. After 25 years of renowned reliability the all-new Corolla 4-Door Sedan will continue to gratify high value expectations. Power is efficiently drawn from the compact 1.6-liter 4-cylinder twin-cam 16-valve electronically fuel-injected (EFI) engine. For silky gear manipulation, the Corolla comes standard with a 5-speed manual overdrive transmission, or you can choose the optional 3-speed automatic transmission. The drivetrain is complemented by a smooth 4-wheel independent MacPherson strut suspension. You also have the options of an Anti-lock Brake System (ABS) and power-assisted rack-and-pinion steering.



THE INSIDE STORY. The well-adorned interior includes fabric-faced seats and headrests, and full cut-pile carpeting throughout the cabin.



GEAR UP FOR CRUISING. The optional 4-speed electronically controlled automatic overdrive transmission (ECT) is a smooth addition, and makes everyday commutes a pleasure.



WELL RECEIVED. The optional Deluxe Electronically-Tuned Radio (ETR) with 4 speakers provides great reception of your favorite stations, and it's conveniently located high up on the dash for easy operation.

A

ADDITIONAL PERFORMANCES HAVE BEEN ADDED.

1993 4-Door DX Sedan takes center stage in a play entitled "Value." To the starring role it brings a new, more powerful 1.8-liter dual overhead cam engine that delivers a stirring 115 hp* at 5600 rpm and 115 lb.-ft. of torque at only 2,800 rpm for quicker

"...center stage in a play entitled 'Value.'"

get-up-and-go. Like all Corollas, gold-plated, anti-corrosion terminals are used for important engine and air bag circuitry for added reliability. Directing the engine's vitality is the standard power-assisted rack-and-pinion steering and 5-speed manual overdrive transmission. The front and rear stabilizer bars help minimize body roll, and the large 185/65R14 All-Season steel-belted radial tires with full wheel covers

are designed to grip the road for enhanced control. Other considerate features include intermittent windshield wipers, rear window defogger, dual black manual remote-controlled folding outside mirrors, tinted glass, passenger-side vanity mirror, front door map pockets, digital clock and the option of power door locks.

*In 49 states only; 110 hp in California.



CARGO PASSAGE. A fold-down 60/40 split rear seat provides pass-through space from the trunk area. With one side down, you get extra cargo carrying capacity, even with a rear-seat passenger. There are also security locks that help keep your belongings safe in the trunk.



A SENSORY EXPERIENCE. The DX Sedan features full fabric seats, including headrests and fabric door trim.



KEEP YOUR COOL. Inside the LE Sedan are many special features that let you stay in control of your environment, like the standard air conditioning unit which offers a cool breeze on a hot summer's day.



DISCOVER COROLLA, AGAIN. If you've discovered that the word "value" has mysteriously lost its meaning, it's time you took a look at the feature-filled all-new 1993 Corolla LE Sedan. Equipped with all the unquestioned substance of quality and reliability that the name Toyota implies, the LE Sedan adds the element of surprise with standard features that you would expect to be extras. Things like the comfort of air conditioning. There's even the convenience of a standard 4-speed



LISTEN TO THIS. The optional Deluxe ETR/Cassette delivers superior sound quality through its advanced receiver and strategically placed 4 speakers.

"...a profound artistic statement about value."

electronically controlled automatic overdrive transmission (ECT). If it has been awhile since you've found a real value, discover the Corolla LE Sedan.

"A THING OF BEAUTY IS A JOY FOREVER." Many vehicles come and go, but after 25 years the Corolla continues to make a profound artistic statement about value. The all-new Corolla LE Sedan looks as if a painter's brush has accented it. Its aero-shape is garnished with dual color-keyed power folding outside mirrors, bodyside moldings and door handles. LE full wheel covers accent this moving sculpture, making any roadway a potential art exhibit.



THE PERFECT MATCH. Optional lightweight, custom-designed alloy wheels complement the LE Sedan's handsome looks. The eye-catching wheels are matched with large 185/65R14 All-Season steel-belted radials for superb traction.



PERFECT POSTURE. With contemporary styling, and added amenities, the all-new top-of-the-line LE Sedan, stands tall as the discovery of the year.



SOME POWERFUL ASSISTANCE. The Toyota LE Sedan comes with a standard Power Package. It includes power windows with a driver-side one-touch "auto-down" feature, power door locks and power mirrors.



THE PROPER ALIGNMENT. The LE's standard tilt steering wheel adjusts up and down to help you achieve your most comfortable driving position.



FEATURE COMFORTS IN A HEAVENLY SETTING. The additional amenities of the LE Sedan combine to create a place of absolute pleasure. To make your stay comfortable, a special 4-way adjustable driver's seat firmly supports you. It is covered in LE's distinct fabric as are the door trim, front passenger seat and the 60/40

"...a place of absolute pleasure."

split rear seat. For convenience, the standard stalk-mounted cruise control maintains long distance steadiness with minimal effort. Other standard features which make the LE Sedan a functional delight include dual visor vanity mirrors and variable intermittent windshield wipers. Of course there are some options to consider also, like an Anti-lock Brake System (ABS). You can also add the optional power sunroof if you prefer to let the sun shine in.

RECONNAISSANCE MISSION. Information gathering is an easy assignment if you're behind the wheel of the LE Sedan. A large speedometer and tachometer report vehicle and engine speeds, while gauges, including fuel level and coolant temperature, summarize other data. To check out your ETA just scan the digital clock right above the ETR.



LE Sedan interior shows in Taupe cloth.



DX Wagon shown in Super Red.

A

ADMIRABLE ASPIRATIONS WITH A TOUCH OF INDULGENCE.

You work hard, and you make a lot of sacrifices. But not this time. The best of both worlds awaits you in the 1993 Toyota Corolla 5-Door DX Wagon. It has the versatility of a wagon and the security of a standard driver-side air bag,* yet it's very stylish with performance to match. Now you can fulfill your everyday obligations and still satisfy your desire for sophistication and performance.

EVER CHANGING NEEDS. What's on the agenda today? Mass transit, mass transport or recreational adventure? Whatever the occasion calls for the DX Wagon

"The best of both worlds awaits you..."

is ready for it. With the fold-down 60/40 split rear seat up, there's comfortable seating for five and plenty of luggage room. Say you need to tote some skis; just fold down one of the rear seatbacks and slide them inside. If the duty calls for some large freight, fold down both seatbacks and your cargo area is substantially increased. Add the optional Power Package and the convenience of power windows and door locks is just a touch away.

*See page 4 for more information on Corolla's driver-side air bag Supplemental Restraint System (SRS).



OUT OF SIGHT, OUT OF MIND.
The color-keyed rear cargo cover helps hide objects that need not be viewed by others.



PROTECTIVE CUSTODY. Child-safety rear door locks are standard on the DX Wagon as they are on all Corollas. When locked, the inside door handles are inoperable so curious young adventurers stay put.



COOLING TRENDS. Add the optional air conditioning system (standard on the LE) and you'll be able to successfully forecast changes in Corolla's climate.



YOUR OWN PERSONAL MUSICAL ARCHIVE. With the optional 6-Disc CD Changer accessory your musical library is always with you. Functions include random play and track select.

ATENTION TO DETAIL. It's a philosophy Toyota lives by. Now it's your turn to put this principle into practice. With the many options and accessories available, you'll be able to give your Corolla the attention it deserves. Maybe you'll start with a safety feature. If so, then choose the optional Anti-lock Brake System (ABS). As you shift to convenience, you might want to select a DX Sedan with the optional power door locks or the 4-speed electronically controlled automatic overdrive transmission (ECT) (standard on the LE). Move on to entertainment and you have a variety of sound systems that deliver high-fidelity sound. For the choices that personalize Corolla just for you, turn to Toyota options and accessories.

"...give your Corolla the attention it deserves."

MUSICAL VARIATIONS. It's time to make a choice, and with two superb systems to choose from you're bound to find the musical medium that is just right for you. There's the ETR (standard on the LE Sedan) for avid program listeners and the Deluxe ETR/Cassette for those who like to mix their own preferences. For those who like the clarity of CD technology the Compact Disc Deck accessory can be added to both ETR systems.



ALIGN YOURSELF WITH ALLOY. Select the optional alloy wheels for your new LE Sedan. They add spirit to the LE's already sophisticated stance.



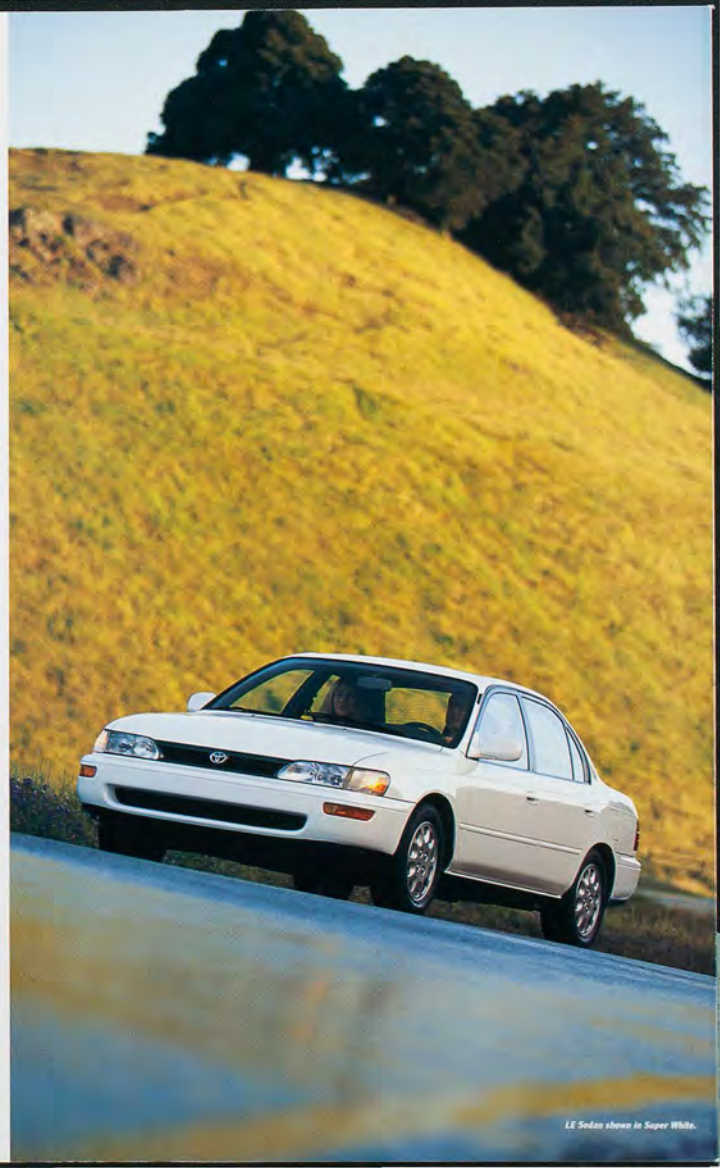
FIND YOUR PLACE IN THE SUN. With the optional power sunroof it's easy. A touch of a button lets you create that place anywhere you go. (Not available on 4-Door Sedan or DX Wagon.)



STRAIGHT OFF THE RACK. Expanding the cargo capacity for your DX Wagon is as simple as choosing the optional adjustable rear roof rack accessory.

INTERIOR TRIM LEVELS	EXTERIOR FINISH	INTERIOR
		Gray or Taupe
		Taupe
		Blue or Taupe
		Taupe
		Blue
		Blue
		Gray
		Gray
		Gray
		Gray

*Available on sedans only.



LE Sedan shown in Super White.



TIME-TESTED COMMITMENT. For over fifty years Toyota has built vehicles that have achieved the highest recognition for quality, dependability and engineering excellence. These accomplishments are a result of Toyota's commitment to build vehicles that respond to your needs and inspire confidence. Today, for example, all passenger cars in Toyota's model lineup are equipped with a standard driver-side air bag.* Toyota's concern for safety is also illustrated by the Previa: the first and only passenger van with a driver-side air bag to meet all Federal Passenger Car Motor Vehicle Safety Standards.** Everything that goes into a new Toyota, from the initial design phase to the actual manufacturing process, does so with safety, comfort and driving enjoyment in mind. Because, ultimately, the most important thing that goes into any new Toyota is you.

1993 COROLLA SAFETY FEATURES

Driver-side air bag Supplemental Restraint System (SRS)[†]

3-point front seatbelts with adjustable shoulder belt anchors

3-point rear seatbelts in outboard positions

Child-protector rear door locks

Anti-lock Brake System (ABS) (optional)

Side door intrusion beams

*See page 4 for more information on Corolla's driver-side air bag Supplemental Restraint System (SRS).

**Meets all Passenger Car Federal Motor Vehicle Safety Standards except LE models equipped with optional privacy glass due to window tinting.

MECHANICAL	4-Door Sedan				5-Door Wagon			
	Standard	DX	LE	DX	Standard	DX	LE	DX
1.6-liter 4-cylinder twin-cam 16-valve electronically fuel-injected (EFI) engine	S	—	—	—	S	—	—	—
1.8-liter 4-cylinder twin-cam 16-valve electronically fuel-injected (EFI) engine	—	S	S	S	—	S	S	S
5-speed manual overdrive transmission	S	S	—	—	S	S	—	—
4-speed electronically controlled automatic overdrive transmission (ECT)	—	0	S	0	—	0	S	0
3-speed automatic transmission	0	—	—	—	0	—	—	—
Rack-and-pinion steering	S	—	—	—	S	—	—	—
Power-assisted rack-and-pinion steering	0	S	S	S	0	S	S	S
Front stabilizer bar	—	S	S	S	—	S	S	S
Rear stabilizer bar	S	S	S	S	S	S	S	S
Anti-lock Brake System (ABS)	0 [†]	0	0	0	0	0	0	0
EXTERIOR								
Aerodynamic halogen headlamps with auto-off feature	S	S	S	S	S	S	S	S
Side door impact beams	S	S	S	S	S	S	S	S
Dual black remote-controlled folding outside mirrors	S [†]	S	—	—	S	—	—	—
Dual color-keyed power folding outside mirrors	—	—	S	—	—	—	S	—
Wide protective bodyside moldings	—	S	S [†]	—	—	S	S [†]	—
Tinted glass	S	S	S	S	S	S	S	S
Color-keyed bumpers	S	S	S	S	S	S	S	S
Front and rear mudguards	A	A	A	A	A	A	A	A
Power sliding sunroof with overhead maplight	—	—	0	—	—	—	0	—
Rear intermittent window wiper/washer	—	—	0	—	—	—	0	—
Full wheel covers	S	S	S	S	S	S	S	S
Aluminum alloy wheels	—	—	0	—	—	—	0	—
Adjustable roof rack	—	—	—	A	—	—	—	A
INTERIOR								
Reclining front bucket seats with adjustable headrests	S	S	S	S	S	S	S	S
4-way adjustable driver's seat	—	—	S	—	—	—	S	—
Fold-down 60/40 split rear seat with security locks	—	—	S	S [†]	—	—	S	S [†]
Fabric seats and door trim	S	S	S	S	S	S	S	S
Fall cut-pile carpeting with driver-side footrest	S	S	S	S	S	S	S	S
Driver-side air bag Supplemental Restraint System (SRS)	S	S	S	S	S	S	S	S
3-point front seatbelts with adjustable shoulder belt anchors	S	S	S	S	S	S	S	S
3-point rear seatbelts in outboard positions	S	S	S	S	S	S	S	S
Integrated child-protector rear door locks	—	0	S	—	—	0	S	—
Power door locks	—	0	S	0 [†]	—	0	S	0 [†]
Tilt steering wheel	—	0	S	0	—	0	S	0
Intermittent windshield wipers	S [†]	S	S [†]	S	S [†]	S	S [†]	S
Cruise control with variable intermittent windshield wipers	—	0	S	0	—	0	S	0
Dual cup holder	S	S	S	S	S	S	S	S
Electric rear window defogger	0 [†]	S	S	S	0 [†]	S	S	S
Side window demisters	S	S	S	S	S	S	S	S
Rear cargo area tonneau cover	—	—	—	S	—	—	—	S
Air conditioning	0	0	S	0	0	0	S	0
Remote hood, trunk and fuel-filler door releases	S	S	S	S [†]	S	S	S	S [†]
Speedometer, odometer, tripometer, coolant temperature and fuel level gauges	S	S	S	S	S	S	S	S
Tachometer	—	0 [†]	S	—	—	0 [†]	S	—
Air bag, seatbelt, low fuel level, battery, door ajar, engine, oil and brake warning lights	S	S	S	S	S	S	S	S
Digital quartz clock	A	S	S	S	A	S	S	S
Center console box	S	S	S	S	S	S	S	S
AUDIO SYSTEMS								
Deluxe Electronically-Tuned Radio (ETR) with 4 speakers	0 [†]	0 [†]	S	0	0 [†]	0 [†]	S	0
Auto-reverse Cassette Deck with Dolby [®] (for above ETR)	A	A	A	A	A	A	A	A
Deluxe ETR Cassette with 4 speakers	0	0	0	0	0	0	0	0
Compact Disc Deck	A	A	A	A	A	A	A	A
6-disc CD Changer	A	A	A	A	A	A	A	A
PACKAGES								
Cold Kit Package—includes electric rear window defogger, heavy-duty battery and alternator, 4.5-L washer tank, rear heater ducts and luggage door trim	0 [†]	S	S	S	0 [†]	S	S	S
Convenience Package—includes power-assisted steering and air conditioning	0	—	S	—	0	—	S	—
Power Package—includes power windows and door locks with two-turn unlock feature	—	—	S	—	—	—	S	—
Radio Prep Package—includes 2 speakers, antenna and wiring harness	0	0	—	0	0	0	—	0

S-Standard
 0-Factory Option
 A-Dealer-installed accessory
 —Not available
 N/A-Not applicable

Dolby[®] is a registered trademark of

Dolby Labs, Inc.

[†]Includes 185-65R14 tires and larger

temporary spare tire with option.

[‡]Without remote control feature.

[§]Color-keyed.

[¶]Without security locks.

^{**}Part of Power Package.

^{††}Without intermittent adjustment.

^{‡‡}With variable intermittent wipers.

^{§§}Part of Cold Kit Package.

^{¶¶}Without trunk release.

^{‡‡‡}Optional on manual transmission

model.

^{§§§}Also available as a dealer-installed

accessory.

^{¶¶¶}Includes electric rear window defog-

ger with timer on 3-speed automatic

transmission model.

^{‡‡‡‡}1993 preliminary EPA mileage figures

determined by Toyota. 1993 EPA esti-

mated mileage figures not available at

time of printing. See your Toyota

dealer for details.

MECHANICAL PERFORMANCE	4-Door Sedan				5-Door Wagon			
	Standard	DX	LE	DX	Standard	DX	LE	DX
Body/frame construction	Unitized body				Unitized body			
Steering type	Rack-and-pinion				Power-assisted rack-and-pinion			
Turning circle diameter, curb to curb	32.2 (ft.)				32.2 (ft.)			
Brakes, power-assisted	(front)	Ventilated discs			(front)	Drums		
Suspension	(rear)	Independent MacPherson struts			(rear)	Independent MacPherson struts and stabilizer bar		
Engine type	(rear)	Independent dual-link with MacPherson struts and stabilizer bar			4-cylinder twin-cam 16-valve with electronic fuel injection			
Displacement	1.6 liters (1,587cc)				1.8 liters (1,762cc)			
Horsepower (SAE net)	(49 states)	105 @ 5,800 rpm	115 @ 5,600 rpm	110 @ 5,600 rpm	105 @ 5,800 rpm			
Torque (SAE net)	(California)	100 lb.-ft. @ 4,800 rpm	115 lb.-ft. @ 2,800 rpm	110 lb.-ft. @ 4,800 rpm	100 lb.-ft. @ 4,800 rpm			
ELECTRICAL								
Alternator	12 volts, 70 amps.				Electronic			
Ignition system	Maintenance-free				Maintenance-free, 55-amps./hr.			
Battery	50-amps./hr.				50-amps./hr.			
EXTERIOR DIMENSIONS (in.)								
Wheelbase	97.0	97.0	97.0	97.0	97.0	97.0	97.0	97.0
Overall length	172.0	172.0	172.0	172.0	172.0	172.0	172.0	172.0
Overall width	66.3	66.3	66.3	66.3	66.3	66.3	66.3	66.3
Overall height	53.5	53.5	53.5	53.5	53.5	53.5	53.5	53.5
Tread width	(front)	57.5	57.5	57.5	(front)	57.5	57.5	57.5
	(rear)	57.1	57.1	57.1	(rear)	57.1	57.1	57.1
INTERIOR DIMENSIONS (in.)								
Head room	(front)	38.8	38.8	38.8	(front)	38.8	38.8	38.8
	(rear)	37.1	37.1	37.1	(rear)	37.1	37.1	37.1
Leg room	(front)	42.4	42.4	42.4	(front)	42.4	42.4	42.4
	(rear)	33.0	33.0	33.0	(rear)	33.0	33.0	33.0
Shoulder room	(front)	54.1	54.1	54.1	(front)	54.1	54.1	54.1
	(rear)	53.5	53.5	53.5	(rear)	53.5	53.5	53.5
Hip room	(front)	51.3	51.3	51.3	(front)	51.3	51.3	51.3
	(rear)	54.3	54.3	54.3	(rear)	54.3	54.3	54.3
CURB WEIGHTS (lbs.)								
5-speed manual overdrive transmission	2,304				2,370			
4-speed electronically controlled automatic overdrive transmission (ECT)	N/A				2,447			
3-speed automatic transmission	2,348				N/A			
CAPACITIES								
Luggage capacity, rear seatbacks up	(cu. ft.)	12.7	12.7	12.7	12.7	12.7	12.7	12.7
Fuel tank	(gals.)	13.2	13.2	13.2	13.2	13.2	13.2	13.2
TIRES								
Type	All-Season steel-belted radial blackwalls							
Size	175-65R14				185-65R14			
Spare	Temporary							
MILEAGE ESTIMATES^{††}								
EPA estimated MPG city/highway	(5-speed manual overdrive)				(3-speed automatic)			
	28/33				28/34			
	N/A				26/33			
	26/29				N/A			

Some vehicles are shown with optional equipment. See Data/Specc charts. For details on 1993 vehicle specifications and standard and optional equipment in your area, contact your Toyota dealer. A vehicle with particular equipment may not be available at the dealership. Ask your Toyota dealer to help you try to locate a specifically equipped vehicle. Vehicle specifications and standard and optional features are for mainland U.S.A. vehicles only and may differ in the state of Hawaii and in other regions.

LIMITED WARRANTY SUMMARY

Comprehensive coverage: 36-month or 36,000-mile.

Powertrain: 60-month or 60,000-mile.

Corrosion perforation: 60-month and unlimited miles.