

TOYOTA TOUCH

Toyota Touch is a philosophy in action. It's our effort to make all your experiences with Toyota the very best. From the time of your initial contact, during the sale and throughout your entire ownership experience, our focus is your complete satisfaction.

If you ever have any questions, contact your dealer's Customer Relations Manager. For additional information, call our Customer Assistance Center at 1-800-331-4331 (weekdays 9 a.m. to 9 p.m. EST).

WARRANTY INFORMATION
A 36-month/36,000-mile basic new vehicle limited warranty applies to all components other than normal wear and maintenance items. Additional 60-month limited warranties cover your powertrain (for 60,000 miles) and corrosion perforation (for unlimited miles). See your Toyota dealer for complete details. In addition, there may be times when we will establish a special policy adjustment which will further defray repair costs.

TOYOTA TOUCH LEASE
Get into the Toyota of your choice with the Toyota Touch Lease Program. Ask your dealer for details.

Buckle Up!
Do it for those who love you.



TERCEL



COROLLA



CAMRY



PREVIA



PASEO



CELICA



MR2



SUPRA



4RUNNER



LAND CRUISER



TRUCKS



TOYOTA T100

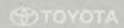
TOYOTA CELICA



TOYOTA

It's how what you do for me.

1-800-331-4331
©1993 Toyota Motor Sales, U.S.A., Inc.



As a company that's been a part of America for 37 years, Toyota's ultimate goal is your complete satisfaction. To this end, Toyota is devoted to providing you with the best products and services in the automotive industry. When you choose a Toyota vehicle, you have a commitment that it will live up to the reputation of quality for which Toyota is known. This dedication to you also extends to the

DRIVING PRINCIPLES

way Toyota does business here in America. That's why Toyota has a total investment of more than \$5 billion in the American market including design centers, testing facilities and manufacturing plants. In fact, many of the Toyota Trucks, Corollas and Camrys sold in the U.S. are built right here. Over 84,000 men and women are employed in the U.S. by Toyota and Toyota dealers. Partnerships with hundreds of American suppliers also have had a significant economic impact across the United States. From Toyota's substantial national investment in the U.S. to local efforts at the dealer level, the Toyota family is working hard to ensure complete satisfaction throughout your ownership experience.



1 9 9 4

C E L I C A

If some cars are statements of individuality, the all-new 1994 Celica is a declaration of independence. Toyota quality and reliability have always appealed to an individual's sense of self-sufficiency. The all-new Celica's free-spirited styling, new levels of precision handling and safety make this one very special, indeed. The all-new 1994 Celica. Watch out. It's here.



GT Liftback shown in Alpine Silver Metallic with optional equipment.

S T S P O R T C O U P E



ST Sport Coupe shown in Renaissance Red with optional equipment.



DYNAMIC VISION. From the beginning, the all-new Celica's vibrant form was conceived to be a unique expression of power and confidence. Throughout its development, the integrity of this expression stayed true.



SET YOUR SIGHTS. It's a lot easier to adjust the outside rearview mirrors from the inside. The ST Sport Coupe features standard power mirrors.

A NEW DIMENSION OF STYLING. The all-new Celica ST Sport Coupe exhibits powerful appeal that goes beyond its flowing lines. The stunning aerodynamics clearly state that this is an exciting automobile—the road-smoothing handling and driver-friendly technology drive the point home impressively.

PICTURE-PERFECT HANDLING. The variable-assist power rack-and-pinion

ROAD SHOW

steering is light and easy on the highway—and makes parking a breeze. A 5-speed manual overdrive transmission features short throws and smooth transitions while the redesigned suspension system, with front and rear sub-frames, helps provide confidence-instilling control on a variety of road surfaces and conditions. Safety enhancements include a driver- and passenger-side air bag Supplemental Restraint System (SRS)* and exceptional night vision provided by world-class headlamp brightness. Miles roll by courtesy of the smooth 1.8-liter 16-valve powerplant. And Toyota quality is evident at every level.



TEMPERATE TRAVELER. A 15.9-gal. fuel tank, EPA efficiency and a track record of good gas mileage** get you down the road with a lot more road between stops.

*See page 12 for more information on Driver's, Driver and Passenger side air bag Supplemental Restraint System (SRS). **See EPA mileage statement on page 27 for details.





REMOTE POSSIBILITIES.

Don't get up—just pull the fingertip releases conveniently located beside the driver's seat to pop open the remote fuel-filler door or the trunk/hatch lid.

SPLIT THE DIFFERENCE.

The fold-down 60/40 split rear seat, when down, provides the convenience of a long passageway to the trunk and handles many items you wouldn't be able to get into an ordinary coupe. And for extra security, a lock is provided.

CONFIDENCE AND COMFORT. The driver ergonomic design of Celica's

steering wheel, instrument gauges and controls are designed to keep you relaxed and in control. The steering wheel is easy on the eyes and quickly "falls" into place with a column tilt for lowering wheel to driver's controls. And, with the positive feedback of the 4-speed electronically controlled automatic transmission, you'll enjoy the ride.

INNER STRENGTHS

YOU'RE IN TOUCH WITH FUN AND CONTROL. Celica's agility and the world

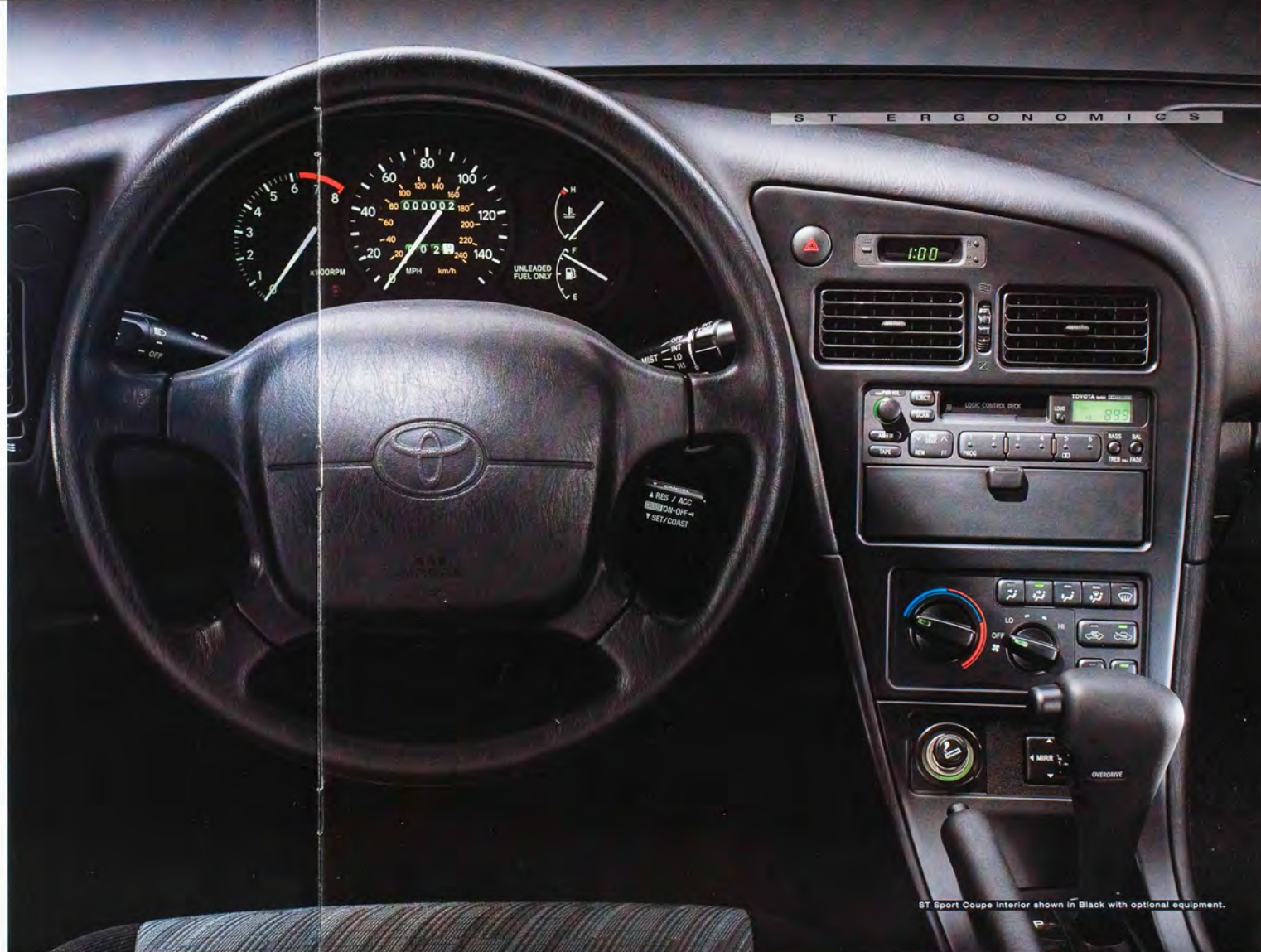
outside, with its challenges, are truly balanced. Confidence-inspiring standard equipment, such as driver and passenger-side air bags* give you the class of Toyota's interest in quality and safety engineering. Front-wheel drive pulls you through the road, and the optional 4-speed electronically controlled automatic transmission (ECT) is a smooth addition.

FOR YOUR COMFORT. A

4-way adjustable driver's fabric sport seat is standard on both ST and GT models, offering slide, recline, front seat cushion and headrest height adjustments. Generously padded bolsters hold you during spirited maneuvers.

SUPPORT GROUP. Celica

STs are designed to deliver you to your destination relaxed and refreshed with formfitting sport seats, full carpeting, dual visor vanity mirrors, armrests, dual door map pockets, a Deluxe Electronically-Tuned Radio (ETR) with 4 speakers, and even optional power windows and door locks.



S T E R G O N O M I C S

A RES / ACC
ON-OFF-
T SET/COAST

ST Sport Coupe Interior shown in Black with optional equipment.

*See page 15 for information on safety belts and proper use of the Supplemental Restraint System (SRS).

S T L I F T B A C K



ST Liftback shown in Black with optional equipment.



SERVING YOU WELL. The ST Liftback offers you many conveniences like the rear hatch that opens wide to easily welcome large items. There are also refreshing details that cater to you such as a retractable dual cup holder in the armrest.



CONTEMPORARY SHAPE FOR THE OLD FORM/FUNCTION PRINCIPLE.

One look at the dramatically aggressive and alluring shape, and one tends to forget the time-proven axiom that function leads the way. It's still true in the case of this purposeful set of stunning

A FORM OF POWER

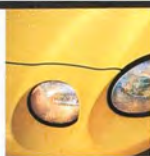
aerodynamics and posed muscle. The all-new Toyota Celica ST Liftback's dramatic silhouette is home to a 18-liter twin-cam 16-valve EFI engine that delivers a healthy and dynamic 110 hp at 5,600 rpm.

BEAUTY AND UTILITY: THE SHAPE OF THINGS TO GO.

Engine components have been specially balanced and precisely tuned to give you a seamless flow of power—from stoplight to highway travel. Improved electronic fuel injection (EFI) provides outstanding response at high revs, and 4-valve-per-cylinder aerobics assure ready punch. Add light-touch accurate handling, and a body that's both aerodynamically effective and beautiful, and you have the Toyota Celica ST Liftback—the shape of things to go!



BETTER BRAKES. Power-assisted ventilated front and rear disc brakes (GT models—large rear drums on ST models) employ fade-resistant brake lining material for enhanced stopping performance.



SUPERIOR NIGHT VISION. Headlamp brightness that cuts into the dark for new levels of night visibility is another innovative Toyota touch. The world-class light penetration rivals many European luxury automobiles, with separate lamps for high and low beams.



STRONG BODYGUARD. The unitized body is strategically reinforced to form a 20% improvement in body shell rigidity combined with a substantial weight reduction for excellent stability and NVH reduction.

CONCERN FOR YOUR SAFETY. Safety initiatives are embedded in the 2004 Corolla (new standards of handling performance, improved road feel, and that proprietary safe driving) steps have been taken to help diminish effects of an impact, as well. Steel reinforcement around the cabin structure helps deflect some impact energy away from occupants. The NVH factor (Noise, Vibration,

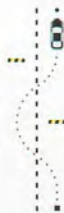
PREVENTIVE MEASURES

Harshness) has been further reduced to help driver concentration. High-strength steel and strong side-rob beams help deflect impact from either side. Driver- and passenger-side air bags¹ add an extra margin of protection. Improved brakes and headlights are active features. These and many other measures help solidify your driving enjoyment.



BUFFER ZONES. All Corollas feature a driver- and passenger-side air bag Supplemental Restraint System (SRS)² which activates in a front-end collision of enough magnitude to inflate the bags. In a moderate collision, primary protection is provided by the 3-point lap and shoulder belt system, and the air bags may not inflate. So, safety belts should be worn at all times by all occupants.

ALL-STAR SHORTSTOP. This option could well win MVP in a few seconds. The new Anti-lock Brake System (ABS) is the latest, lighter, more compact generation of ABS with four independent wheel sensors and an actuator that pulses the brakes to help keep them from locking during hard braking. It also helps maintain traction and steering control.



¹Always use the proper SRS seat belt type and proper installation. ²The location of the Supplemental Restraint System (SRS) is shown in the diagram. Always use the proper installation.

OCCUPANT SAFETY



ST Liftback shown in Solar Yellow with optional equipment.



POWER STRUCTURE. The 2.2-liter 135-hp¹ twin-cam engine features a precision-balanced crankshaft, 16 valves with increased lift and programmed sequential multi-point electronic fuel injection. (Standard with GT models.)



PICTURE OF HEALTH. This is a power chart a performance enthusiast can love; the broad, healthy power band of the 2.2-liter engine gives you all the torque you need anywhere on the rev scale and effortless cruising in the upper reaches.

BEAUTY IS MORE THAN SKIN DEEP. The low CO₂ emissions program (30 mpg city, 40 mpg highway, 45 mpg combined) helps you save money on gas. The MacPherson strut front suspension and coil-over rear suspension help provide you a smooth ride.

TECHNICAL KNOCKOUT

The 2.2-liter engine is a precision-balanced crankshaft, 16 valves with increased lift and programmed sequential multi-point electronic fuel injection. The low CO₂ emissions program (30 mpg city, 40 mpg highway, 45 mpg combined) helps you save money on gas. The MacPherson strut front suspension and coil-over rear suspension help provide you a smooth ride.

HIGH-TECHNOLOGY, NOT HIGH-STRUNG GADGETRY. The VTEC[®] low-drag intake valve timing helps provide you a smooth ride.

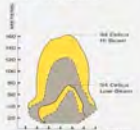


TECHNOLOGY IN MOTION. Wind-splitting aerodynamics boast a sleek 0.32 coefficient of drag. The agility and precision of a completely retuned suspension with ride-enhancing subframes, front and rear, make back roads as pleasurable as boulevards.

PRECISION EQUALS POWER. The 1.8-liter engine's response is fluid and immediate. Its new EFI system combines optimum timing and fuel mix so you have ample power at low or passing speeds. (Standard with ST models only.)



1 SHOW OFF. World-class headlamp performance outshines many European road sedans, with sleek-looking separate lamps for high and low beams.



2 COOLER OIL. An oil cooler, similar in nature to an engine's cooling system, helps prevent overheating and engine-damaging carbonizing of lubricating oil at constant high speeds or at low speeds in traffic.



3 FAST-BRAKING NEWS. Standard power-assisted ventilated front disc brakes with improved cooling performance and large rear drums—discs on GT models—help you call it quits with confidence and control.

4 4-VALVES-PER-CYLINDER. 16 valves (two intake, two exhaust valves-per-cylinder) plus recent improvements in lift, valve size and timing, result in more efficient burning of fuel,* a broader power band with plenty of torque and cruising power, and seamless acceleration from zero to highway speeds.



5 DOUBLE-TEAMING. Dual overhead camshafts help spin out all the smooth power you need through 16-valve technology in either the 1.8-liter or 2.2-liter powerplants. Both provide plenty of low-end torque and high-end cruising ease.



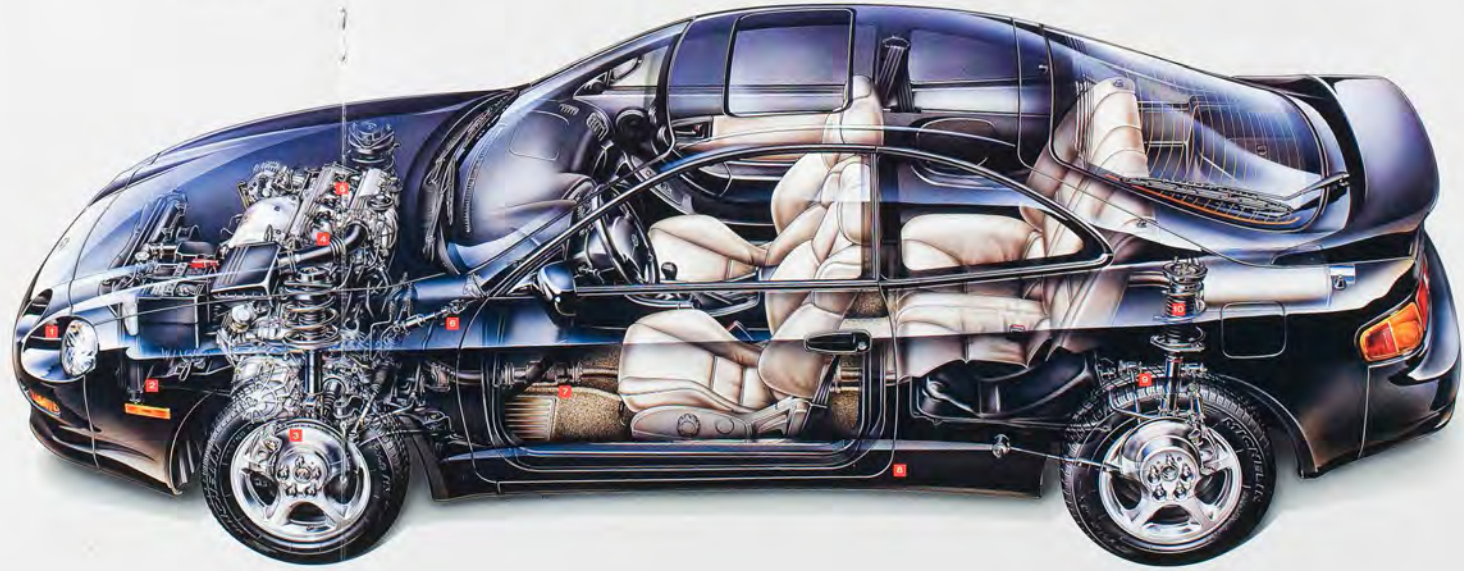
6 GIVE WAY. When encountering a certain level of impact, the corrugated steering tube collapses itself down to a shorter length in order to absorb some of the collision energy, lessening the effect on the driver.

7 THE SOUND OF SILENCE. A number of steps were taken to deliver you to your destination relaxed and refreshed—by saving you from unnecessary noise. Vibration-dampening materials, exhaust improvements, increased rigidity, engine-mount modifications and stiffeners all add up to a lot less noise and vibration.

8 RUST INHIBITORS. Extensive use of zinc/iron double-layer-plated steel panels and galvanized steel sheets inhibit corrosion and worry, and add to long-lasting Toyota quality.

9 ADVANCED GEOMETRY. Refined suspension geometry consists of MacPherson strut front, and dual-link rear suspension with front and rear sub-frames to improve rigidity and reduce road noise level. The offset coil-spring independent rear suspension incorporates gas-filled shock absorbers and dual-link rear geometry to help reduce rear-end lift and front-end dive.

10 SPORT PACKAGE PERFORMANCE. Specially tuned springs and sway bars are included in the GT Liftback's optional Sport Package. In concert with the low-velocity-valve shock absorbers, the Sport Package system provides enhanced control and precision handling.



G T S P O R T C O U P E



GT Sport Coupe shown in Super White with optional equipment.



PRECISION MOVES. The slick-shifting, jewel-like movement of the optional 4-speed electronically controlled automatic overdrive transmission (ECT) gives you an easy, smooth transfer of power to pavement.



WELCOME ACCOMPANIMENT. The Deluxe ETR/Cassette with 6 speakers and a power antenna is standard on all GT models, but the sound is far from standard. An Auto-reverse Cassette is included, and the ETR with power antenna enhances weak FM signals.

IT PERFORMS AS SMOOTH AS IT LOOKS. Toyota Celica GT Sport Coupe's beautiful new shape accurately reflects how smoothly it handles. Its aggressive, forward-leaning design slays road-ready, and its fun-to-drive performance backs up the statement. With 135

FEEL FREE

horses* an agile suspension and low-profile radials, it becomes an extension of your spirited style.

EXPRESS YOUR INDIVIDUALITY. This graceful sportster slips through the wind with ease and handles curves with road-hugging smoothness. With standard driver- and passenger-side air bags,** an optional Anti-lock Brake System (ABS) and Toyota quality, Celica GT Sport Coupe makes the road to individuality a smoother, safer trip—and downright enjoyable.



ANGLE OF REPOSE. A standard Celica GT feature gives you the angle on relaxed attention with an adjustable tilt steering wheel that adapts to your preference.

*135 hp on cars equipped with California emissions.
**See page 12 for more information on Celica's driver- and passenger-side air bag Supplemental Restraint System (SRS).



FINE LINES. It's a fine line between classic styling and true aerodynamics, and only a few attain it. This sleek GT Liftback snags the looks but evades the wind with an eye-pleasing, streamlined 0.32 coefficient of drag.

POWER PACKAGE.

Standard on GT, the Power Package offers power door locks and push-button power windows with a driver-side one-touch "auto-down" feature and a 60-second retained power function.



UNCONVENTIONAL WISDOM. Commonplace thinking has it that you must sacrifice comfort for exceptional handling, beauty for utility. Not in Celica. The MacPherson strut front, and dual-link rear suspension has added subframes for better road input and rigidity, offset with coil springs and bump-filtering high-performance shocks to provide excellent suspension...and generous comfort. The convenient rear hatch opens to admit large items, and it enhances the fastback look of the sloping rear end.

NO COMPROMISES ALLOWED

BEHIND THE LINES.

There's inner beauty, too. Generously bolstered, deeply comfortable sport seats are elegant, yet simply appointed, with adjustments for slide, recline, headrest, and driver-side seat cushion height. The fold-down 50/50 split rear seat features a security lock to help keep your belongings secure.



GT LIFTBACK



GT Liftback shown in Sea Spray Pearl with optional equipment.

G T S P O R T P A C K A G E



GT Liftback shown in Renaissance Red with Sport Package and other optional equipment.



THE WHOLE CAR IS A SPOILER. The GT Liftback with optional Sport Package will spoil you for ordinary driving—as if to signify this, the optional spoiler on the sleek, raked rear end is one more working performance detail. It helps increase road contact at highway speeds by directing air downward.



ALLOY EYE-CATCHERS. Featured on the GT Liftback with optional Sport Package, aluminum alloy sport wheels combine good looks with lightness; fitted with low-profile 205-55VR15 road-holding radials, they're one more true performance feature.

MAKING TRACKS. It's easy in the all-new Celica GT Liftback with optional Sport Package. You're in cool control of some exceptional technology that makes your driving experience full of convenience and lots of fun. The performance-tuned MacPherson strut front suspension, dual-link rear suspension and front and rear sub-frames are as surefooted carving the curves on a mountain

LACED WITH PERFORMANCE road as they are cruising the boulevard in the city. For either driving situation, add the optional Anti-lock Brake System (ABS), and stop in your tracks. The sport suspension available on the GT Liftback with Sport Package includes advanced shocks with special valves to improve control. The sporty suspension communicates the road to you, providing a feeling of stable, predictable cornering.



LEAN ON ME. Body lean in cornering is kept to a minimum with the Sport Package sport suspension and front and rear stabilizer bars. The precision-tuned suspension delivers a firm, sporty, yet predictable and smooth ride.



ENHANCEMENTS

NOW, FOR THE REASON YOU CHOSE CELICA IN THE FIRST PLACE. You know Celica's sleek, aerodynamic lines, its sporty styling, its advanced safety features, and its available options. Now you can enjoy the benefits of these features with a new set of enhancements.

GET A LOAD OF THIS

Whether it's cruise control or sunshades, the new options for Celica are designed to enhance your driving experience and provide you with a more personalized driving experience. Maybe you want to power up the windows or the door locks, or maybe you want to power up the CD Changer. Or maybe you want to power up the power windows and door locks. Or maybe you want to power up the power windows and door locks. Or maybe you want to power up the power windows and door locks.



FINGERTIP POWER POD. The Power Package* gives you fingertip control of optional power door locks, plus power windows that include a driver-side one-touch "auto-down" feature and 60-second retained power function.

And now you can enjoy the benefits of these features with a new set of enhancements. Whether it's cruise control or sunshades, the new options for Celica are designed to enhance your driving experience and provide you with a more personalized driving experience. Maybe you want to power up the windows or the door locks, or maybe you want to power up the CD Changer. Or maybe you want to power up the power windows and door locks. Or maybe you want to power up the power windows and door locks.



GOING STEADY. Set it and forget it—you're up to speed and staying there with Celica's optional cruise control, a steady speed-holder with a memory setting.



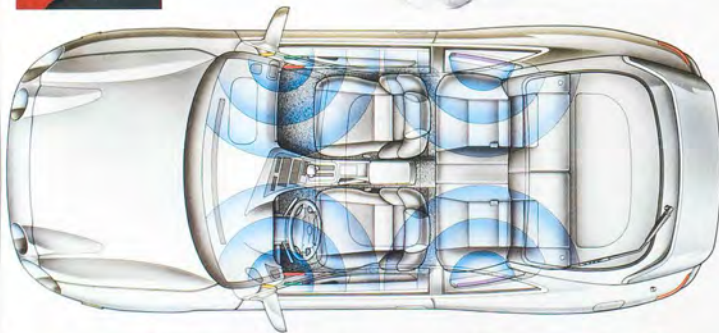
A CLEAR LOOK BACK. The optional rear spoiler is a sporty addition to your ST or GT Liftback (not available on Coupe models). And the intermittent rear window wiper for the ST Liftback (standard on GT Liftback) is one option that improves a look into your past.



GRAND OPENING. Sun worshippers will welcome the fresh-air option of the power tilt/slide moonroof with overhead maplights. To add to its aerodynamic function, choose the sleek wind deflector accessory.



EXTENDED PLAY REDEFINED. Be your own programmer, and listen to your all-time favorites all day long, sunup to sundown. Add the remote-mounted 6-Disc CD Changer* accessory to your sound system, and play in traffic as long as you like.



TRIPLE PLAY. Optional Premium 3-in-1 ETR-Cassette/CD* with 8 speakers gives you three brilliant sources of satisfying sound and dramatic fidelity in one compact unit.



SPUN SILVER. The ST's alloy wheel accessories add a finishing touch to the speed-rated radiols. So take a spin in style.



PRIVATE SECURITY FORCE. The Toyota Vehicle Security System (TVSS) accessory shows that it's on-duty with a red warning light on the dashboard. If activated, the parking lights flash, the horn honks and the starter is disabled. You can also use it to unlock the power door locks from a distance.

ON CALL. Choose either a fixed in-car mobile or a portable cellular phone system. The latter allows you to talk from beyond your Celica and both feature a "hands-free" fit kit!†

*Not available with Premium Sound System.
†Requires car kit installation.
‡Not available on ST models.
§In operation only. Radio reception may vary.
¶Not available on all models.



COLOR AND FABRIC OPTIONS

EXTERIOR FINISHES

INTERIOR



Arcus Silver Metallic Black



Sea Spray Pearl Black or Black/Ivory*



Solar Yellow Black



Super White Black



Performance Red Black or Black/Ivory*



Space Metallic Black or Black/Ivory*



Electric Blue Metallic Black or Black/Ivory*



Turquoise Pearl Black

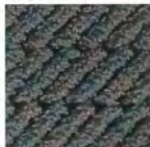


Black Black or Black/Ivory*

INTERIOR TRIM LEVELS COLORS



GT Cloth Black or Black/Ivory**



GT Cloth Black or Black/Ivory**



GT Sport Package Cloth Black



GT Leather Trim Package** Black or Black/Ivory*

*Not available on GT Sport Package Cloth.
 **GT means Black/Ivory interior with all-terrain wheels.
 †GT means Black/Ivory interior with hard floor with black side panels.
 ‡Optional GT Coupe and GT I-Roads with Sport Package only.

S A F E T Y

F E A T U R E S

	MECHANICAL			
	Sport Coupe		Liftback	
	ST	GT	ST	GT
15-liter 4-cylinder twin-cam 16-valve electronically fuel-injected (EFI) engine	S	-	S	-
2.2-liter 4-cylinder twin-cam 16-valve electronically fuel-injected (EFI) engine	-	S	-	S
Engine oil cooler	S	S	S	S
Front-wheel drive	S	S	S	S
5-speed manual/override transmission	S	S	S	S
4-speed electronically controlled automatic override transmission (ECT)	O	O	O	O
Independent MacPherson strut front suspension	S	S	S	S
Independent dual-link rear suspension	-	S	-	S
Front and rear stabilizer bars	S	S	S	S
Variable-assist power rack-and-pinion steering	S	S	S	S
Power-assisted ventilated front disc/rear drum brakes	S	-	S	-
Power-assisted ventilated front disc/rear disc brakes	-	S	-	S
4-wheel Anti-lock Brake System (ABS)—includes larger temporary spare tire	O	O	O	O

	EXTERIOR			
	S	S	S	S
Aerodynamic halogen headlamps with "auto-off" feature	S	S	S	S
Dual color keyed power outside mirrors	S	S	S	S
Color-keyed bumpers and door handles	S	S	S	S
Tinted glass	S	S	S	S
Front/rear mudguards	A	A	A	A
Tilt/sliding power moonroof	O	O	O	O
Variable intermittent front windshield wipers	S	S	S	S
Intermittent rear window wiper	-	O	-	O
Color-keyed aerodynamic rear spoiler	-	O	-	O
Full wheel covers	S	S	S	S
T10 aluminum alloy wheels	-	O	-	O
ST alloy wheels	A	-	A	-
Alloy wheel locks	A	-	A	-
Front-end mask with storage bag	A	A	A	A

	INTERIOR			
	S	S	S	S
4-way adjustable driver's seat	S	S	S	S
Fold-down 50/50 split rear seat with security lock	S	S	S	S
Fabric seats and door trim with courtesy lights/reflector	S	S	S	S
Rear cargo area cover	-	-	S	S
Full carpeting with driver-side footrest	S	S	S	S
Cellular telephone (fixed)	A	A	A	A
Cellular telephone (portable)	A	A	A	A
Driver- and passenger-side air bag Supplemental Restraint System (SRS)	S	S	S	S
3-point front and rear seatbelts	S	S	S	S
Side-door impact beams	S	S	S	S
Tilt steering wheel	O	S	O	S
Cruise control	O	O	O	O
Dual visor vanity mirrors	S	S	S	S
Overhead maplights	S	S	S	S
Power windows with three-side "auto-down" feature and power door locks	O	S	O	S
Dual cup holder	S	S	S	S
Rear window defogger (with timer on GT models)	S	S	S	S
Air conditioning (CFC-free)	O	O	O	O
Center console with cover	S	S	S	S
Remote hood, hatch/trunk and fuel-filler door releases	S	S	S	S
Speedometer, tachometer, coolant temperature and fuel level gauges, odometer and tripmeter	S	S	S	S
Air bag, front seatbelts, low fuel level, door ajar, battery and oil pressure warning lights	S	S	S	S
Digital quartz clock	S	S	S	S
Carpeted floor mats	A	A	A	A
Steering Column Security System (SCSS) with remote control	A	A	A	A

	AUDIO SYSTEMS			
	S	S	S	S
Deluxe Electronically Tuned Radio (ETR) with 4 speakers and manual antenna	S	-	S	-
Deluxe ETR/Cassette with 6 speakers and power antenna	O*	S	O*	S
Premium ETR/Cassette with Programmable Equalization, 6 speakers, power antenna and diversity reception	-	O	-	O
Premium 3-in-1 ETR/Cassette/CD with Programmable Equalization, 8 speakers, power antenna and diversity reception	-	O	-	O
Auto-reverse Cassette Deck with Body-Fit for above Deluxe ETR	A	A	A	A
Compact Disc Deck (not available with Premium 3-in-1 ETR)	-	-	-	-
6-Disc CD Changer (not available with Premium 3-in-1 ETR)	A	A	A	A

	PACKAGES			
	O*	S	O	S
Power Package—power windows and door locks	O*	S	O	S
Leather Trim Package—leather-trimmed seats, leather-wrapped steering wheel and manual shift knob	-	O	-	O*
Sport Package—high-performance tires, aluminum alloy wheels, sport suspension, fabric sport seats with front-seat headrest, leather-wrapped steering wheel and manual shift knob	-	-	-	O

A TIME-TESTED COMMITMENT. For over fifty years

Toyota has built vehicles that have achieved the highest recognition for quality, dependability and engineering excellence. These accomplishments are a result of Toyota's commitment to build vehicles that

ARE OF YOUR INTEREST

respond to your needs and inspire your confidence.

Today, for example, all passenger cars in Toyota's

model lineup are equipped with either a standard driver-side air bag or a driver- and passenger-side air

bag Supplemental Restraint System (SRS)*. Everything

that goes into a new Toyota, from the initial design

phase to the actual manufacturing process, does so

with safety, comfort and driving enjoyment in mind.

Because, ultimately, the most important thing that

goes into any new Toyota is you.

1994 CELICA SAFETY FEATURES:

- Driver- and passenger-side air bag Supplemental Restraint System (SRS)*
- 3-point front and rear seatbelts
- Front passenger Automatic Locking Retractor (ALR)/Emergency Locking Retractor (ELR) seatbelt
- Rear Automatic Locking Retractor (ALR)/Emergency Locking Retractor (ELR) seatbelts
- Side-door impact beams
- Collective emergency steering shaft
- Impact-absorbing body structure
- 4-wheel disc brakes (ST)
- Optional 4-wheel Anti-lock Brake System (ABS)

*See page 7 for more information on Celica's driver- and passenger-side air bag Supplemental Restraint System (SRS).

S P E C S

	MECHANICAL / PERFORMANCE			
	Sport Coupe		Liftback	
	ST	GT	ST	GT
Body/frame construction	Unibody body with front and rear sub-frames			
Steering type	Variable-assist power rack-and-pinion			
Turning circle diameter, curb to curb	34.2		34.2	
Brakes, power-assisted	18 (front) 12 (rear)		18 (front) 12 (rear)	
Suspension	Independent MacPherson struts with offset coil springs, low-pressure gas-filled shock absorbers, ball-joint type stabilizer bar and sub-frame			
Engine type	4-cylinder twin-cam 16-valve with EFI		4-cylinder twin-cam 16-valve with EFI	
Displacement	1.8 liters (176cc)		2.2 liters (216cc)	
Horsepower (SAE net)	110 @ 5,600 rpm 110 @ 5,600 rpm		135 @ 5,400 rpm 130 @ 5,400 rpm	
Torque (SAE net)	115 lb-ft @ 2,800 rpm		145 lb-ft @ 4,400 rpm 115 lb-ft @ 2,800 rpm	
Drivetrain	Front-wheel drive			
Coefficient of drag	0.32		0.32	

	EXTERIOR DIMENSIONS (in.)			
	ST	GT	ST	GT
Wheelbase	99.9	99.9	99.9	99.9
Overall length	177.0	177.0	174.2	174.2
Overall width	68.9	68.9	68.9	68.9
Overall height	51.0	51.0	50.8	50.8
Tread width (front/rear)	59.6/58.9	59.6/58.9	59.6/58.9	59.6/58.9

	INTERIOR DIMENSIONS (in.)			
	ST	GT	ST	GT
Head room without sunroof	38.3/34.9	38.3/34.9	38.3/34.9	38.3/34.9
Leg room	43.1/26.6	43.1/26.6	43.1/26.6	43.1/26.6
Hip room	52.8/47.8	52.8/47.8	52.8/47.8	52.8/47.8
Shoulder room	52.4/49.9	52.4/49.9	52.4/49.9	52.4/49.9

	GEAR RATIOS (1)							
	5-sp. man	4-sp. ECT	5-sp. man	4-sp. ECT	5-sp. man	4-sp. ECT	5-sp. man	4-sp. ECT
Transmission type	1st	4.005	3.285	2.610	3.996	4.005	3.285	2.610
	2nd	2.308	1.960	1.549	1.904	2.208	1.950	1.549
	3rd	1.310	1.425	1.000	1.310	1.425	1.000	1.000
	4th	0.969	0.981	0.709	0.969	0.981	0.709	0.709
	5th	0.815	N/A	0.820	0.815	N/A	0.820	N/A
	(reverse)	3.250	3.272	3.153	3.250	3.272	3.153	3.250
	(differential red)	4.058	2.921	4.176	4.058	2.921	4.176	4.058

	CURB WEIGHTS (lbs.)			
	ST	GT	ST	GT
5-speed manual override	2,395	2,550	2,415	2,580
4-speed automatic override (ECT)	2,475	2,620	2,490	2,640

	CAPACITIES			
	ST	GT	ST	GT
EPA volume, including cargo capacity (cu. ft.)	69.0	69.0	63.4	63.4
Cargo/trunk capacity, rear seatback up (cu. ft.)	10.6	10.6	16.2	16.2
Fuel tank (gals.)	15.9	15.9	15.9	15.9

	TIRES			
	ST	GT	ST	GT
Type	161-in.-beltd radial blackwall			
Size	185/70R14		205/55R15	
Season	Temporary		Temporary	

	MILEAGE ESTIMATES*			
	ST	GT	ST	GT
EPA estimated MPG city/highway	27/34	23/29	27/34	23/29
5-speed manual override	27/34	23/29	27/34	23/29
4-speed automatic override (ECT)	26/32	23/30	26/32	23/30

Some vehicles are shown with optional equipment.

See Features/Specs charts. For details on 1994 vehicle specifications, standard features and optional equipment in your area, contact your Toyota dealer. A vehicle with particular equipment may not be available at the dealership. Ask your Toyota dealer to help locate a specifically equipped vehicle.

Specifications, standard features and optional equipment are based upon information available at the time of printing and are subject to change without notice. Specifications, standard features and optional equipment are for mainland U.S.A. vehicles only and may differ in the state of Hawaii and in other regions.