



CHRYSLER

CIRRUS

1997

Design

Leadership

Engineering

Heritage



C H R Y S L E R

The distinctively sweeping silhouette and poised appearance of Chrysler Cirrus may lead you to believe it is a sporty coupe. And yet, inside, you will find a spacious five-passenger interior and thoughtful appointments that say this is one of the most roomy and comfortable sedans in its class. With Cirrus LX and the more luxurious LXi, these seemingly contradictory impressions are effortlessly resolved. The result is a thoroughly rewarding automobile that offers distinctive styling, exceptional interior room and agile handling. And when you consider the ease of Chrysler Canada's Gold Key Leasing,* with features that include little or no money down, lower monthly payments and a wide choice of terms, you'll likely find the attainability of Cirrus to be the most satisfying luxury of all.

* See back cover for more information.

ABOUT THIS CATALOGUE: Since the time of printing, some of this information may have been updated. Ask your Dealer for details before ordering. Some of the equipment shown or described throughout this catalogue is available at extra cost.

A
symbol of design leadership and engineering heritage, the Chrysler seal represents our dedication to achieving the highest standards in every automobile that carries the Chrysler name.



design leadership

*ering
ge*

Chrysler
Cirrus
successfully
meshes the
dynamic
attributes of
a sporty coupe
with the
civilized
comfort and
room of a
luxury sedan.



Chrysler
Cirrus
successfully
meshes the
dynamic
attributes of
a sporty coupe
with the
civilized
comfort and
room of a
luxury sedan.



*design
leadership*



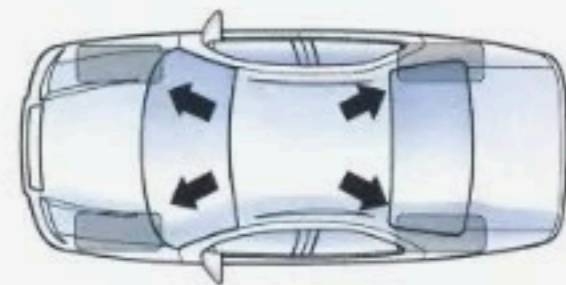
*engineering
heritage*

Cab-Forward: the design that brings ultra-contemporary styling outside and significantly more room inside.



Cirrus LXi

Cirrus Cab-Forward design pushes the wheels toward the corners of the car for more stable handling, and interior dimensions which are well beyond expectations for a compact-sized



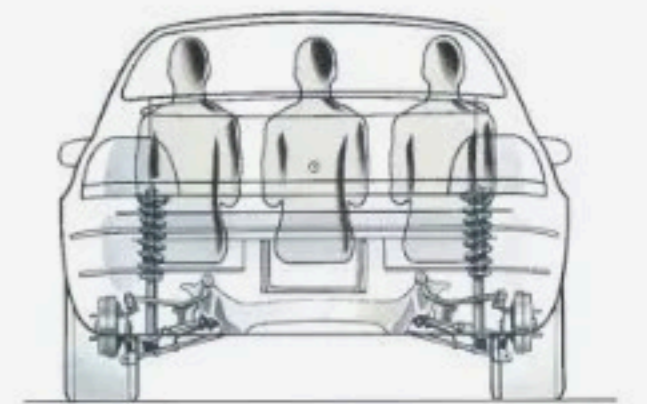
automobile. Cirrus offers generous room for the legs, hips, shoulders – and luggage – of five

adult occupants. Wider, less-obstructed door openings make entry and exit easier. And visibility is improved by a short, downward-sloping hood and large windshield area.

Cab-Forward also permits straighter, more rigid fore-to-aft frame rails to be employed. A cross-car beam supporting the instrument panel adds still more



structural stiffness. Together with the wider track, this rigid body structure contributes to more agile and stable handling, and minimized road noise. Finally, a comparatively long wheelbase helps Cirrus



even out road irregularities for a smoother and more comfortable ride.

Plenty of room is only the beginning. Cirrus offers a host of luxurious appointments and thoughtful touches.

Cirrus luxury accommodation begins with firm, supportive and remarkably comfortable seating.

Cirrus LX offers a unique hand-operated telescoping arm for easy height adjustment of the driver's seat, while eight-way power adjustments



are standard on Cirrus LXi. Leather-faced seats, plus leather-wrapped shift knob and steering wheel, are

also standard on LXi.

Full analogue instrumentation is ideally positioned for quick, legible reference, while steering

wheel-mounted standard speed control offers



easy fingertip use.

Standard climate control equipment on both Cirrus LX and LXi models includes air conditioning

and rear-seat heating/cooling ducts. Add to this list a new standard floor console with



armrest, four cup holders, a standard folding rear seatback for added versatility, plus a HomeLink®

programmable garage door transmitter,

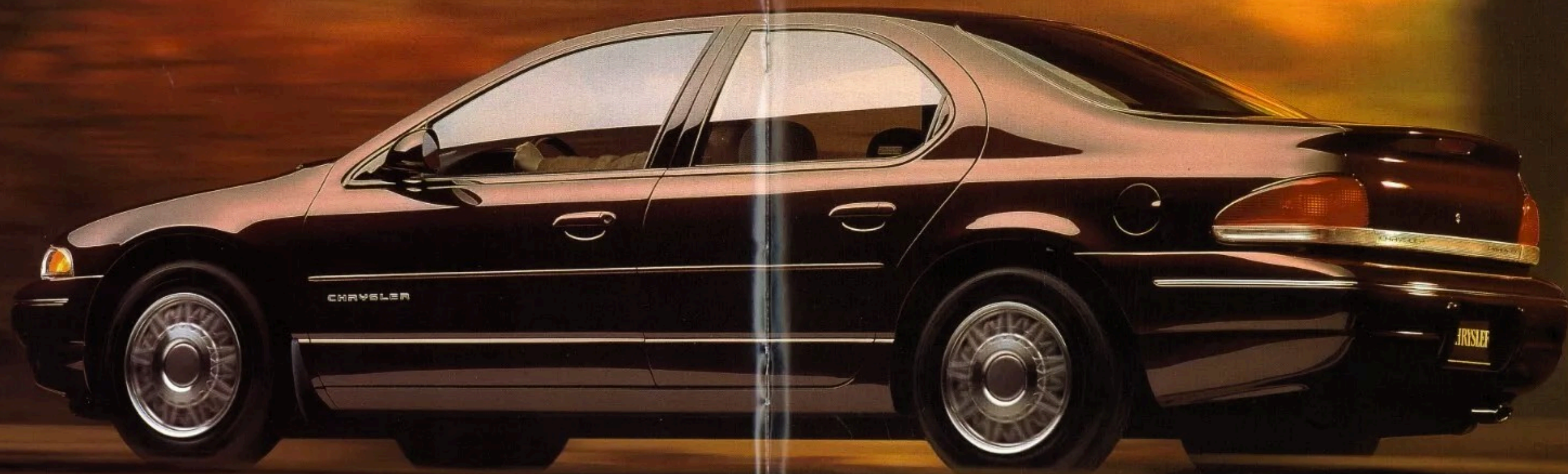


and one thing becomes clear: thoughtful touches are what make Cirrus interior such an accommodating place to be.

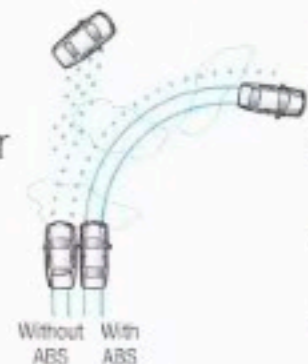
HomeLink® is a registered trademark of the Prince Corporation. Not compatible with all garage door openers. Please see your dealer for details.



Cirrus Interior with leather-faced seats



Cirrus offers a number of comforting and reassuring features. The standard four-wheel anti-lock brake system (ABS) helps the driver maintain steering control under hard braking by

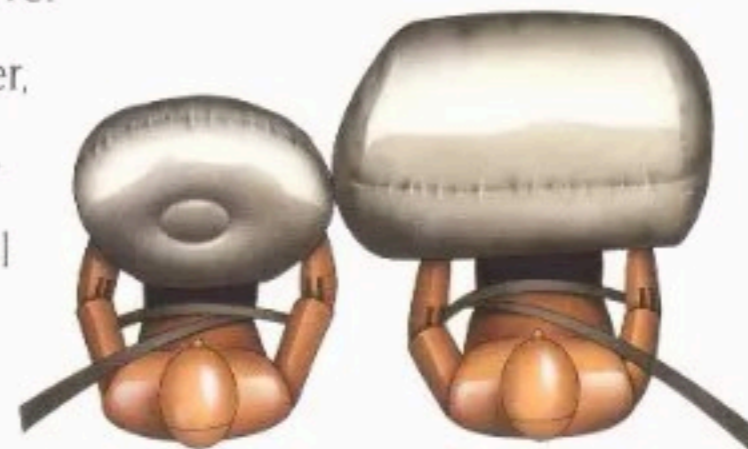


automatically "pumping" the brakes several times per second to help prevent wheel lock-up. Ultra-high-strength steel side-guard beams within front and rear doors help protect occupants by absorbing energy

generated in a side-impact collision. The standard remote keyless entry system locks and unlocks doors, and includes a panic mode that sounds



the horn and flashes the exterior lights. Other notable standard features include air bags* for driver and front-seat passenger, which help provide protection in case of frontal impacts at speeds of 23 kilometres per hour



(14 miles per hour) and above. And front-seat lap/shoulder belts are

height-adjustable for added comfort.

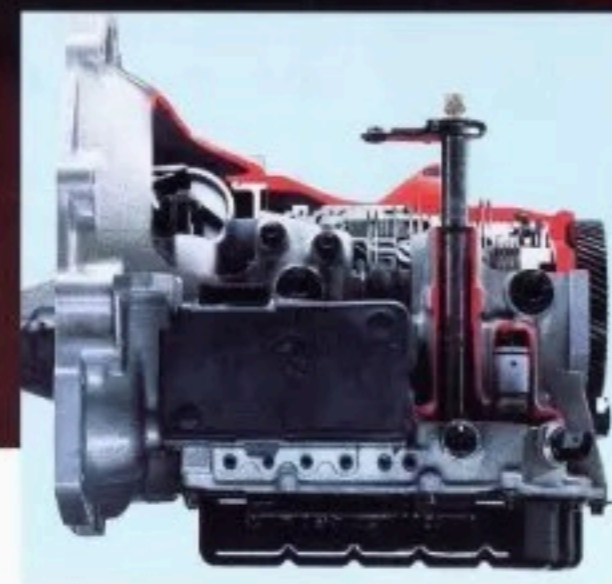
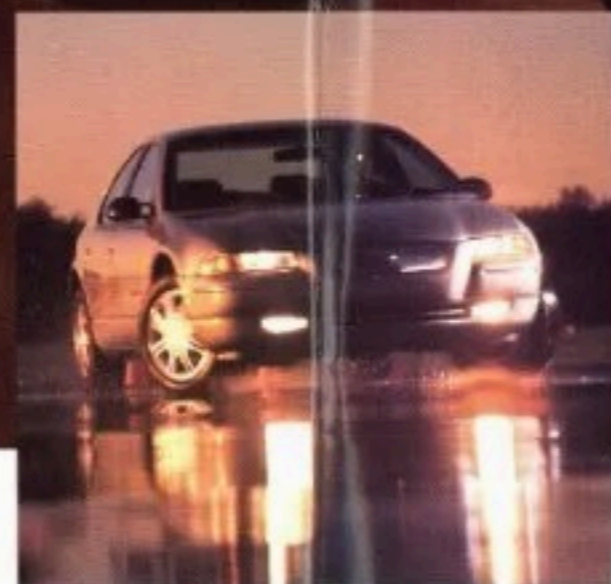
*Always wear your seat belts.



The Built-In Child Seat, optional on Cirrus LX only, is integrated into the centre of the rear seatback. Includes fixed rear seatback.

Always
a smooth
and polished
performer,
Cirrus satisfies
the driver's
demand for
responsive
handling.

Cirrus LXi



Chrysler Cirrus makes a strong statement with the polished performance of its advanced powertrain. Smooth yet responsive, the Cirrus 2.5-litre V6

SOHC 24-valve engine† develops 125 kilowatts (168 horsepower) at 5800 rpm, and 230 N·m (170 lb-ft) of torque at 4350 rpm. Its 24-valve,

single overhead camshaft design employs four valves per cylinder for free-breathing top-end power. Computerized sequential Multi-point fuel injection

(SMPI) and “tumble” intake port design ensure an optimized fuel/air mixture for strong response and clean-burning efficiency. Adding

even more refinement is a precise four-speed automatic transmission, and complementing the sophisticated powertrain is a four-wheel independent

suspension employing double-wishbone design, which allows ride and handling characteristics to be tuned separately, so neither is compromised.

Extensive testing and development are part of the Cirrus quality story.



Computer-assisted design, laboratory development, and millions of kilometres of testing were all part of meeting the engineering standards for Cirrus. Computer-based design technology was used to engineer the harmonious combination of engine, transmission, frame and suspension specifications. Aerospace-derived wind-tunnel testing was used to fine-tune the aerodynamics. But the most important standards to be met are yours.



Chrysler Canada is proud of its role in the creation of the joint University of Windsor/Chrysler Canada Ltd. Automotive Research and Development Centre in Windsor, Ontario. The aim of this partnership – the first of its kind in Canada – is to pursue niche research in new automotive product technology. Representing a combined investment of some \$30 million, this state-of-the-art R&D Centre features three road simulators, an engine performance analyzer, a vehicle experimental laboratory and a CATIA computer design system. Additionally, the R&D that has established Chrysler Canada as a leader in alternative fuel technology will continue at this new Centre.



Let Cirrus pamper you with its large selection of comfort and convenience options. Cirrus LX features an AM/FM stereo with cassette, seek feature and digital clock. Optional on LX, and standard on LXi, is a premium AM/FM stereo with cassette, seek feature, digital clock and CD changer controls. Optional on both models is a new dash-mounted six-disc CD changer system.



As well, a large selection of genuine Mopar Accessories is available to enhance the comfort, convenience or versatility of your new Cirrus. For your added peace of mind, Mopar Accessories are covered by your new-car warranty when installed by your Chrysler dealer at



the time of vehicle purchase. Ask your dealer about the complete range of Mopar Accessories for Cirrus, including roof racks and front-end covers.

Personalize Chrysler Cirrus with a wide array of quality Mopar Accessories.

CHRYSLER CIRRUS SPECIFICATIONS

SELECTED STANDARD AND OPTIONAL FEATURES	Cirrus LX	Cirrus LXi
Air Bags* – Driver and front passenger	S	S
Air Conditioning – (Environment-friendly, CFC-free)	S	S
Alternator – 90-amp	S	S
Antenna – Fixed; rear, black	S	S
Assist Handles – Three (3)	S	S
Battery – 510-amp, maintenance-free	S	S
Brakes – Power, front disc/rear drum with anti-lock (ABS)	S	S
Cargo Net – Luggage compartment	NA	S
Carpeting – Passenger compartment, trunk	S	S
Child Seat – Built into centre of rear seat (NA with leather trim; deletes fold-down seatback feature)	O	NA
Child-Protection Rear Door Locks	S	S
Child-Seat Anchorage Provision	S	S
Clock, Digital – Integral with all radios	S	S
Coat Hooks – Rear (2)	S	S
Console – Forward with storage bin and two cup holders; floor console with armrest, covered storage, coin holder, pen holder, transmission shift selector and two rear cup holders	S	S
Corrosion Protection – Protective coating on body panels and extensive use of galvanized steel	S	S
Cup Holders – Front (2); integral with centre console; rear (2)	S	S
Daytime Running Lights	S	S
Defroster – Rear window, electric	S	S
Demisters – Front side windows	S	S
Door Beams – Side-intrusion	S	S
Door Handles – Aerodynamic, body colour	S	S
Door Locks – Power	S	S
Door Trim Panels – Front and rear include armrest and fabric inserts; woodgrain accents; front adds map pocket and speaker	S	S
Ducts – Rear-seat air conditioning/heat ducts	S	S
Engine – 2.5-litre V6 ⁽¹⁾ SOHC 24-valve SMPI	S	S
Engine Block Heater and Battery Heater	S	S
Exhaust System – Stainless steel	S	S
Floor Mats – Front and rear	S	S
Fog Lamps	S	S
Fuel Tank – 60 litres (13.3 Imp. gal.)	S	S
Glass, Tinted – All windows including solar control windshield	S	S
Glove Box – Locking, with light	S	S
Headlights, Halogen – Aerodynamic with aimable reflectors	S	S
Horns – Dual note	S	S
Illuminated Entry	S	S

SELECTED STANDARD AND OPTIONAL FEATURES	Cirrus LX	Cirrus LXi
Instrument Cluster – Analogue: includes 240 km/h speedometer, tachometer, gauges for fuel level, engine coolant temperature; display for PRNDL, odometer, trip odometer; warning lights for brakes (ABS), low oil pressure, engine coolant temperature, check engine, battery charging system, low fuel, seat belt, air bag	S	S
Keys – Double-bitted with valet-park-security second key	S	S
Lights – Ignition switch, overhead front reading, dome/courtesy, vanity mirrors, glove box, front storage, trunk	S	S
Mirrors – Exterior: dual power remote control, heated Interior: rearview day/night; dual visor/vanity, covered, illuminated	S	S
Mouldings – Bodyside, body colour	S	S
Multi-Function Control Lever – Mounted on steering column, left stalk includes controls for turn signals, headlights, instrument panel dimmer, lane change feature, fog lamps and flash-to-pass feature; right stalk for intermittent wiper/washer	S	S
Power Assists – Brakes	S	S
Door locks	S	S
Mirrors – Heated	S	S
Seat – 8-way, driver	O	S
Steering – Rack-and-pinion	S	S
Windows – With one-touch-down for driver	S	S
Radio – AM/FM stereo cassette	S	NA
Premium AM/FM stereo cassette with CD changer controls	O	S
AM/FM stereo with CD player and graphic equalizer ⁽²⁾	O	NA
AM/FM stereo cassette with dash-mounted 6-disc CD changer	O	NA
6-disc CD changer – mounted in dash	NA	O
Remote Keyless Entry System with Panic Alarm	S	S
Remote Releases – Hood and deck lid	S	S
Seat Belts – 3-point lap/shoulder belts at outboard positions, front (2), rear (2) with adjustable turning loops on front shoulder belts to optimize comfort for persons of differing heights; lap belt at centre position, rear	S	S
Seats – Front: Premium cloth buckets, reclining with adjustable head restraints and driver's side lumbar support Leather-faced low-back buckets; same features as above Driver-manual seat height adjuster 8-way power driver's seat	S	NA
Rear: Bench – Fold-down seatback (except with optional Child Seat); LXi adds outboard headrests. Includes seatback release operable from inside car or from trunk Built-In Child Seat with fixed rear bench seat (NA leather trim; deletes fold-down seatback feature)	NA	S
Security Anti-Theft Alarm System	O	S
Smoker's Package – (Cigar lighter and ash receiver)	O	O
Speed Control	S	S
Steering – Power-assisted, rack-and-pinion	S	S
Steering Column – Tilt	S	S

CHRYSLER CIRRUS SPECIFICATIONS

SELECTED STANDARD AND OPTIONAL FEATURES	Cirrus LX	Cirrus LXi
Steering Wheel – 3-spoke, with centre horn blow Leather-wrapped	S	S
Stone Guards – Front fender	NA	S
Stoplight – Supplemental centre high-mounted (CHMSL)	S	S
Sun Visors – Cloth: driver and front passenger with covered vanity mirrors, illuminated	S	S
Suspension – 4-wheel independent, front: short-long arm, with high upper control arm, stabilizer bar; rear: independent short-long arm, stabilizer bar (Firm feel – with higher spring ratings standard on LXi)	S	S
Tires – P195/65R15 SBR, BSW, All-Season P195/65HR15 SBR, BSW, All-Season Touring Spare, compact Spare, conventional (replaces compact spare)	S	NA
Transmission – 4-speed electronically controlled automatic with lock-up torque converter	NA	S
Transmitter – HomeLink [®] Universal Transmitter garage door opener ⁽³⁾	S	S
Traveller – Mini trip computer with compass and outside temperature (late availability)	O	O
Wheels – 15-inch steel with premium wheel covers 15-inch cast aluminum wheels (chromed on LXi)	S	NA
Windows – Power (with one-touch-down for driver's window)	O	S
Windshield Wipers – Speed-sensitive, variable intermittent wipe feature with hood-mounted washers	S	S

S – Standard O – Optional NA – Not Available SOHC – Single Overhead Camshaft BSW – Black Sidewall SBR – Steel-Belted Radial SMPI – Sequential Multi-Point Fuel Injection HomeLink[®] is a registered trademark of the Prince Corporation. *Always wear your seat belts. ⁽¹⁾Built by Mitsubishi Motors Corporation. ⁽²⁾CD system does not include cassette player. ⁽³⁾Not compatible with all garage door openers. Please see your dealer for details.

Specifications, descriptions and illustrative material contained herein are based on authorized information. Although specifications, descriptions and illustrations were believed to be correct at the time this publication was approved for printing, accuracy cannot be guaranteed. Chrysler Canada Ltd. reserves the right to discontinue models or

POWERTRAIN		
ENGINE AND TRANSMISSION AVAILABILITY		2.5-Litre V6*
Cirrus LX	4-speed auto. ⁽¹⁾	standard
Cirrus LXi	4-speed auto. ⁽¹⁾	standard
ENGINE SPECIFICATIONS		2.5-Litre V6*
Type	SOHC 24-valve	
Fuel Delivery	SMPI	
Net Power – kW (bhp) @ rpm	125 (168) @ 5800	
Net Torque – N-m (lb-ft) @ rpm	230 (170) @ 4350	
Bore and Stroke – mm (in.)	84 (3.31) x 76 (2.99)	

SMPI – Sequential Multi-Point Fuel Injection SOHC – Single Overhead Camshaft *Built by Mitsubishi Motors Corporation. ⁽¹⁾With lock-up torque converter.

DIMENSIONS, WEIGHTS AND CAPACITIES		
EXTERIOR DIMENSIONS, WEIGHTS AND CAPACITIES		
	mm	in.
Wheelbase	2743	108.0
Overall length	4724	186.0
Overall width (at mirror tips)	1979	77.9
Overall height	1374	54.1
Track – front/rear	1529	60.2
Turning diameter – m (ft.)	11.3 (37.1)	
Curb Weight – kg (lb.)	1406 (3099)	
Usable Luggage Capacity – L (cu. ft.) ⁽¹⁾	445 (15.7)	
Maximum Towing Capacity – kg (lb.) ⁽²⁾	454 (1000)	
Seating Capacity	5	
Fuel Capacity – L (Imp. gal.)	60 (13.3)	
INTERIOR DIMENSIONS		
	mm	in.
Front – Headroom	975	38.4
– Legroom (max.)	1074	42.3

INTERESTED IN RECEIVING SPECIAL OFFERS IN THE MAIL FROM CHRYSLER CANADA?

From time to time, Chrysler Canada makes special offers to individuals on our mailing list. Would you like to be included? If so, please fill out this card and drop it in your nearest mailbox.

It's free.

Please circle one: Mr. Mrs. Ms. Miss Other _____

First Name _____ Middle Initial _____

Preferred Name _____

Family Name _____

Mailing Address _____
(include suite/apt. no.)

City _____ Province _____

Postal Code _____ Language Preference: English French
(please circle one)

Current Vehicle _____
(make: e.g. Chrysler) (model: e.g. Intrepid) (year: e.g. 1995)

If you currently own or lease a Chrysler, Plymouth, Dodge, Jeep or Eagle vehicle, what is the Vehicle Identification Number? (That's the 17-character serial number on your registration form.)

VIN:



CHRYSLER CIRRUS SPECIFICATIONS

SELECTED STANDARD AND OPTIONAL FEATURES	Cirrus LX	Cirrus LXi
Air Bags* – Driver and front passenger	S	S
Air Conditioning – (Environment-friendly, CFC-free)	S	S
Alternator – 90-amp	S	S
Antenna – Fixed; rear, black	S	S
Assist Handles – Three (3)	S	S
Battery – 510-amp, maintenance-free	S	S
Brakes – Power, front disc/rear drum with anti-lock (ABS)	S	S
Cargo Net – Luggage compartment	NA	S
Carpeting – Passenger compartment, trunk	S	S
Child Seat – Built into centre of rear seat (NA with leather trim; deletes fold-down seatback feature)	O	NA
Child-Protection Rear Door Locks	S	S
Child-Seat Anchorage Provision	S	S
Clock, Digital – Integral with all radios	S	S
Coat Hooks – Rear (2)	S	S
Console – Forward with storage bin and two cup holders; floor console with armrest, covered storage, coin holder, pen holder, transmission shift selector and two rear cup holders	S	S
Corrosion Protection – Protective coating on body panels and extensive use of galvanized steel	S	S
Cup Holders – Front (2): integral with centre console; rear (2)	S	S
Daytime Running Lights	S	S
Defroster – Rear window, electric	S	S
Demisters – Front side windows	S	S
Door Beams – Side-intrusion	S	S
Door Handles – Aerodynamic, body colour	S	S

SELECTED STANDARD AND OPTIONAL FEATURES	Cirrus LX	Cirrus LXi
Instrument Cluster – Analogue: includes 240 km/h speedometer, tachometer, gauges for fuel level, engine coolant temperature; display for PRNDL, odometer, trip odometer; warning lights for brakes (ABS), low oil pressure, engine coolant temperature, check engine, battery charging system, low fuel, seat belt, air bag	S	S
Keys – Double-bitted with valet-park-security second key	S	S
Lights – Ignition switch, overhead front reading, dome/courtesy, vanity mirrors, glove box, front storage, trunk	S	S
Mirrors – Exterior: dual power remote control, heated Interior: rearview day/night; dual visor/vanity, covered, illuminated	S	S
Mouldings – Bodyside, body colour	S	S
Multi-Function Control Lever – Mounted on steering column, left stalk includes controls for turn signals, headlights, instrument panel dimmer, lane change feature, fog lamps and flash-to-pass feature; right stalk for intermittent wiper/washer	S	S
Power Assists – Brakes	S	S
Door locks	S	S
Mirrors – Heated	S	S
Seat – 8-way, driver	O	S
Steering – Rack-and-pinion	S	S
Windows – With one-touch-down for driver	S	S
Radio – AM/FM stereo cassette	S	NA
Premium AM/FM stereo cassette with CD changer controls	O	S
AM/FM stereo with CD player and graphic equalizer ⁽²⁾	O	NA
AM/FM stereo cassette with dash-mounted 6-disc CD changer	O	NA
6-disc CD changer – mounted in dash	NA	O
Remote Keyless Entry System with Panic Alarm	S	S



0282879099-N9A6L7-BR01

CHRYSLER CANADA LTD
PO BOX 453 STN A
WINDSOR ON N9A 9Z9

CHRYSLER CIRRUS SPECIFICATIONS

SELECTED STANDARD AND OPTIONAL FEATURES	Cirrus LX	Cirrus LXi
Steering Wheel – 3-spoke, with centre horn blow Leather-wrapped	S NA	S S
Stone Guards – Front fender	S	S
Stoplight – Supplemental centre high-mounted (CHMSL)	S	S
Sun Visors – Cloth: driver and front passenger with covered vanity mirrors, illuminated	S	S
Suspension – 4-wheel independent, front: short-long arm, with high upper control arm, stabilizer bar; rear: independent short-long arm, stabilizer bar (Firm feel – with higher spring ratings standard on LXi)	S	S
Tires – P195/65R15 SBR, BSW, All-Season P195/65HR15 SBR, BSW, All-Season Touring Spare, compact Spare, conventional (replaces compact spare)	S NA S O	NA S S O
Transmission – 4-speed electronically controlled automatic with lock-up torque converter	S	S
Transmitter – HomeLink [®] Universal Transmitter garage door opener ⁽³⁾	S	S
Traveller – Mini trip computer with compass and outside temperature (late availability)	O	O
Wheels – 15-inch steel with premium wheel covers 15-inch cast aluminum wheels (chromed on LXi)	S O	NA S
Windows – Power (with one-touch-down for driver's window)	S	S
Windshield Wipers – Speed-sensitive, variable intermittent wipe feature with hood-mounted washers	S	S

S – Standard O – Optional NA – Not Available SOHC – Single Overhead Camshaft
BSW – Black Sidewall SBR – Steel-Belted Radial SMPi – Sequential Multi-Point Fuel Injection
HomeLink[®] is a registered trademark of the Prince Corporation. *Always wear your seat belts.
⁽¹⁾Built by Mitsubishi Motors Corporation. ⁽²⁾CD system does not include cassette player. ⁽³⁾Not compatible with all garage door openers. Please see your dealer for details.

Specifications, descriptions and illustrative material contained herein are based on authorized information. Although specifications, descriptions and illustrations were believed to be correct at the time this publication was approved for printing, accuracy cannot be guaranteed. Chrysler Canada Ltd. reserves the right to discontinue models or options at any time or change specifications and materials, equipment or design without notice and without incurring obligation. Some equipment may not be exactly as illustrated in this publication. Some of the equipment listed, described, or illustrated herein may not be standard, and may be available only at extra cost, as factory-installed or dealer-installed; items described as "available" may be standard on some models and optional, or not available, on others. Equipment referred to as available or optional may be at extra cost. Some options are required in combination with other options. For the price of the model with the equipment you desire or verification of specifications and equipment availability contained herein, see your Chrysler Canada Ltd. Dealer.

EXTERIOR COLOURS



¹Limited time availability.

POWERTRAIN

ENGINE AND TRANSMISSION AVAILABILITY	2.5-Litre V6*
Cirrus LX	4-speed auto. ⁽¹⁾ standard
Cirrus LXi	4-speed auto. ⁽¹⁾ standard

ENGINE SPECIFICATIONS	2.5-Litre V6*
Type	SOHC 24-valve
Fuel Delivery	SMPi
Net Power – kW (bhp) @ rpm	125 (168) @ 5800
Net Torque – N-m (lb-ft) @ rpm	230 (170) @ 4350
Bore and Stroke – mm (in.)	84 (3.31) x 76 (2.99)

SMPi – Sequential Multi-Point Fuel Injection SOHC – Single Overhead Camshaft
*Built by Mitsubishi Motors Corporation. ⁽¹⁾With lock-up torque converter.

DIMENSIONS, WEIGHTS AND CAPACITIES

EXTERIOR DIMENSIONS, WEIGHTS AND CAPACITIES	mm	in.
Wheelbase	2743	108.0
Overall length	4724	186.0
Overall width (at mirror tips)	1979	77.9
Overall height	1374	54.1
Track – front/rear	1529	60.2
Turning diameter – m (ft.)	11.3 (37.1)	
Curb Weight – kg (lb.)	1406 (3099)	
Usable Luggage Capacity – L (cu. ft.) ⁽¹⁾	445 (15.7)	
Maximum Towing Capacity – kg (lb.) ⁽²⁾	454 (1000)	
Seating Capacity	5	
Fuel Capacity – L (Imp. gal.)	60 (13.3)	

INTERIOR DIMENSIONS	mm	in.
Front – Headroom	975	38.4
– Legroom (max.)	1074	42.3
– Shoulder room	1402	55.2
– Hiproom	1341	52.8
Rear – Headroom	935	36.8
– Legroom (min.)	968	38.1
– Shoulder room	1389	54.7
– Hiproom	1339	52.7

⁽¹⁾Increased capacity with rear seatback folded. ⁽²⁾Restrictions may apply – see Owner's Manual.



Building quality
one car at a time.



The Chrysler Ownership Experience

It starts with Customer One.

Your Chrysler Canada dealer is committed to providing you with the most satisfying ownership experience. To help achieve that goal, Chrysler Canada dealership staffs are participating in an ongoing initiative called Customer One, which establishes one unbreakable rule: treat each customer with honesty and respect. Through and through, Customer One is aimed at making your needs as a customer the first priority

of each employee at every Chrysler Canada dealership.

Chrysler Five Star Service

We strive to honour our commitment to Customer One every day with a Five Star standard of quality maintenance and repair service. When you come in for service, we'll listen to you to better understand your needs, and we'll do everything we can to maintain your trust. With Chrysler-trained technicians, Mopar Genuine Parts, courteous

attention, a commitment to your convenience, and competitive prices, Chrysler Five Star Service is your key to a satisfying service relationship and a rewarding ownership experience.

Customer One and Chrysler Five Star Service. They're both just part of our efforts to make your Chrysler ownership experience as rewarding as the Chrysler Canada vehicle that you select.

Leasing for Today's Lifestyles

Leasing is one of the most popular ways to drive a new vehicle. Chrysler Canada's Gold Key Lease has the flexibility to fit your vehicle choice and your lifestyle. If the idea of getting the type of vehicle you really want, more often, and paying less for it per month sounds great, ask about Gold Key Lease.

The Gold Key Difference:

Because you only pay for the portion of the vehicle's life you'll use, a Gold Key Lease can offer many great advantages,

all of which help you drive the vehicle you've always wanted.

- *Lower Monthly Payments*

Gold Key Lease payments are typically lower than conventional finance payments. In fact, your payments on a 24-month lease are roughly the same as financing for 60 months.

- *Shorter Term*

With a Gold Key Lease, you can drive a brand-new vehicle as often as every 24 months.

- *Flexibility*

Gold Key Lease terms and payments can be tailored to fit your driving habits and lifestyle.

- *Three Great Options*

A Gold Key Lease offers you three great options at lease end: 1) Turn the vehicle in and lease a new one. 2) Buy the vehicle and keep it. 3) Buy it and sell it for a possible profit.

Auto Debit Option

Gold Key Lease customers have the option of participating in Auto Debit – a convenient system that electronically deducts your monthly lease payment from your chequing or savings account.



Warranty

Warranty coverage is an important part of the ownership experience. Chrysler Canada's 1997 warranty is designed to be simple and straightforward, while providing protection that meets the needs of Canadian drivers. It's this simple – almost everything is covered for 3 years or 60,000 km,* except for tires and a few wear items. All body sheet metal panels have rust-through coverage for 3 years, regardless of distance driven, and outer body panels are covered for 5 years or 160,000 km.* In addition, Chrysler Canada will provide a 24-hour roadside assistance plan for 3 years or 60,000 km.* See your dealer for details.

*Whichever occurs first.

Corrosion Protection

The vehicle corrosion protection and paint processes are backed by the Chrysler 5/160 Anticorrosion Limited Warranty. Galvanized or galvanized steel is used for almost all major body panels and structural components. Two high-lustre colour coats are applied over the primer coats and are protected by two clear coats that provide resistance to abrasion, weathering, and chemicals.

Chrysler Service Contracts

Optional Chrysler service contracts can provide owners with additional peace of mind. They are available in a variety of time and distance combinations to meet your particular ownership needs.

Financing Assistance

Chrysler Canada offers qualified buyers a wide variety of new vehicle purchase financing plans, including Retail Financing, Gold Key Lease and College/University Graduate Plans.

Mopar Parts

When replacement parts are needed, be sure to specify genuine Mopar parts – the first choice of Chrysler engineers. Warranties range from 12 months unlimited mileage to lifetime. Ask for details.

Physically Challenged Assistance Programme

A programme which provides assistance towards the cost of purchase and installation of adaptive driving aids or passenger equipment on new 1997 vehicles. For further information, contact your dealer.



For more information contact your dealer or call:

1-800-361-3700