

'09 Mercury **MARINER**



MERCURY | NEW DOORS OPENED



Savvy Style. Street Smarts.

The sleek and sophisticated Mercury Mariner naturally enhances the beauty of any street scene. With glistening satin accents, a shapely silhouette, a prominent waterfall grille and expressive wheel choices, it raises the style quotient at outdoor cafés and summer block parties. And with the 2009 Mariner, there's even more to get excited about. Functionality is elevated with new and redesigned engines that serve up more horsepower and better fuel efficiency, new technology like available SIRIUS Travel Link™¹ that keeps you more connected than ever before, and new features that help you stay in control. In short, the 2009 Mercury Mariner, Mariner Premier and Mariner Hybrid are simply more impressive than ever. "Mariner's styling ties a refined ribbon around a capable, compact package," says Dan Lyons of *autoMedia.com*.

¹Real-time traffic monitoring available in select markets. Some features are unavailable while driving. Service not available in Alaska or Hawaii.

MARINER PREMIER IN BRILLIANT SILVER METALLIC WITH AVAILABLE EQUIPMENT AND MERCURY ACCESSORY REAR ROOF SPOILER.

More Powerful. More Efficient.

Equipped with the new 2.5L Duratec I-4 engine, the 2009 Mercury Mariner achieves best-in-class¹ highway fuel economy of 28 mpg. In addition, the engine supplies 171 hp – a nearly 12% improvement over the 2008 Mariner. A redesigned 3.0L Duratec V-6 engine delivers 240 hp – a 20% improvement. Both engines feature intake variable cam timing (iVCT) to ensure the most complete and efficient combustion, and both are paired with a new 6-speed automatic transmission that maximizes performance feel and fuel efficiency. In fact, even though horsepower has increased, fuel economy numbers have improved or stayed the same. And should the urge arise to slip away to wide-open spaces, Mariner V-6 models can tow up to 3500 lbs. when properly equipped with the available Class II Trailer Tow Package.

For the tight turns and narrow straightaways of the urban jungle, Mariner's fully independent suspension delivers a smooth, refined ride. This responsive architecture gives Mariner precise steering and handling, while its unibody construction and low stance contribute to its nimble maneuverability. A new rear stabilizer bar keeps Mariner more level in the turns.

To best handle the varying road conditions you face, Mariner can be equipped in standard FWD or available 4WD. The choice is yours. If additional traction is needed for snowy climates or uneven road surfaces, Mariner's Intelligent 4WD System can handle it. Always on and always working, it automatically monitors traction and adjusts torque distribution as needed for maximum grip. In a Mariner equipped with Intelligent 4WD, you can challenge difficult conditions as often as you like.

¹Small SUV class. EPA-estimated 28 mpg hwy. with I-4 engine, automatic transmission and front-wheel drive.

MARINER PREMIER IN BRILLIANT SILVER METALLIC.





Colored in Tranquility.

The color blue, long associated with seaside serenity, actually produces calming chemicals in the human body. In blue rooms, individuals are more productive. These are just 2 reasons to love the Ice Blue interior lighting in the 2009 Mercury Mariner – we're sure you'll find more. Illuminating the instrument cluster, center stack, door lock and window switches, and steering wheel controls, Ice Blue lighting makes quite an impression – especially at night.

To enhance the good feelings and give your Mariner its own unique glow, available Ambient Lighting provides 7 more colors to create any mood you want. Illuminating from within the front cupholders and the front and rear footwells are Light-Emitting Diodes (LEDs) in your choice of green, white, yellow, aqua, red, blue or purple. Along with satin-pewter and chrome accents and available heated front seats, you've got an environment that's long on tranquility. Inside the 2009 Mercury Mariner, your Zen awaits.

MARINER PREMIER IN BLACK LEATHER TRIM WITH STONE ALCANTARA® INSERTS AND AVAILABLE EQUIPMENT.



New for 2009, the available voice-activated Navigation System features the same speech-recognition software as Mercury SYNC, so control couldn't be easier. The system reads upcoming street names aloud, detects traffic incidents ahead, and even offers alternate routes. And with nearly 10 gigabytes of hard drive storage, you can store photos for your home page and rip entire CDs or just your favorite songs (up to 2400 of them). You can even watch DVDs on-screen when Mariner is in "Park."



Information is Power. Pleases the Eyes. And Ears. You Talk. SYNC Listens.™

And Mercury Mariner gives you the link: SIRIUS Travel Link.™¹ Included as part of the optional new Navigation System (shown at left), SIRIUS Travel Link is a powerful driving companion that can find and display the best gas prices, identify an accident and redirect your route, and even provide the weather forecast (complete with radar maps on the 6.5" screen). The latest sports scores and movie listings are also in its ultra-convenient repertoire.

That's all in addition to the over 130 channels of crystal clear, digital-quality sound that's provided by standard SIRIUS® Satellite Radio.² A complimentary 6-month subscription to the SIRIUS Satellite Radio service is yours as well.



To display information at eye level – making it easy to read while driving – engineers gave Mariner a convenient top-of-dash display (above center). Look there for key info on all Mariner models. On Premier models, outside temperature and direction of travel readings are displayed as well. Also on Premier models, the standard message center (above right), located between the tachometer and speedometer, displays trip computer readings and other vital information. Check your messages frequently.

For your listening pleasure, an audio input jack at the base of the center stack (above left) lets you play your personal digital media player through Mariner's speakers.

And more importantly, Mercury SYNC™ responds. Developed in concert with Microsoft®, the available SYNC communications and entertainment system allows you to voice-activate Bluetooth®-enabled mobile phones, MP3 players, thumb drives and more.³ Tell it to call Amy. Ask it to play a specific tune. No problem.

"The voice recognition is so robust that it understood commands I gave it at up to 70 m.p.h. with the driver's window open. The system is stunningly accomplished," says the *Detroit Free Press*.

Visit SyncMyRide.com for the latest information about exciting new features.



¹Real-time traffic monitoring available in select markets. Some features are unavailable while driving. Service not available in Alaska or Hawaii. ²Service not available in Alaska or Hawaii. See your Lincoln Mercury Dealer or contact SIRIUS at 1-888-539-7474 for more information. ³Driving while distracted can result in loss of vehicle control. Only use mobile phones and other devices, even with voice commands, when it is safe to do so. Microsoft is a registered trademark of Microsoft Corporation. The Bluetooth word mark is a registered trademark owned by the Bluetooth SIG, Inc.



Make Each Drive Your Runway.

Wherever it travels, the 2009 Mercury Mariner equipped with the VOGA Package will be on display. And that's before you even get in.

Ready to elevate your already high sense of fashion and style, Mariner VOGA simply shines. Chrome sparkles on the grille, rear liftgate trim, unique "VOGA" badging, roof rack and exclusive 17" chrome wheels with "VOGA" center caps. Inside, a high-contrast interior features soft and subtle Cashmere-colored leather-trimmed seats – exclusive to VOGA – against a Charcoal Black environment. Contrasting Ash stitching and embroidered "VOGA" logos on the front

seatbacks and front floor mats complement the glossy black paint that ties together the instrument panel center stack, center console trim and front window switch bezels.

Add all this finery to Mariner Premier standard features like Mercury SYNC,SM SIRIUS Satellite Radio, Ambient Lighting and a 6-way power driver seat with lumbar support, and you've got one name that delivers high style, high value and high fashion: VOGA. As that name strongly suggests, it's one accessory that should be at the top of your "gotta have it" list.



MARINER HYBRID IN KIWI GREEN METALLIC WITH AVAILABLE EQUIPMENT.



As the earth's first full-hybrid premium small SUV, the first-generation Mercury Mariner Hybrid offered the best of both worlds: outstanding hybrid efficiency and generous SUV capability. The 2009 Mariner Hybrid, with a new engine and a host of other improvements, continues those innovative ways. Available in front-wheel-drive (FWD) and 4-wheel-drive (4WD) configurations, Mariner Hybrid delivers better fuel economy and goes farther on a tank of gas than its conventional gas-powered siblings. All meet California's strict Advanced Technology Partial Zero Emissions Vehicle requirements,¹ which helps keep our air cleaner too. To head down the path to a brighter tomorrow, start up a new 2009 Mercury Mariner Hybrid.

¹AT-PZEV is a rating approved by the California Air Resources Board. Vehicles sold in federally regulated states meet the Environmental Protection Agency's Tier 2/Bin (3) emissions standards.



The Full Benefits of a Full Hybrid.

STARTING UP From light acceleration to speeds up to about 40 mph, Mariner Hybrid can run on electric power alone in Electric Drive mode. Because more time is spent in this mode in urban environments, city mileage is higher than highway mileage for full-hybrid vehicles like Mariner Hybrid.

NORMAL DRIVING As you leave low speeds behind, there's a seamless transition from electric power to gas engine operation. Mariner Hybrid's new 2.5L I-4 engine uses Atkinson-cycle combustion to make the most from each drop of gas, producing a peppy 177 net hp when combined with the 70-watt electric motor. That's 14% more than the previous powertrain.

ACCELERATION During full acceleration, the electric motor gives the gas engine an extra boost of power and torque in Hybrid Drive mode, giving you power when you need it and providing performance similar to a V-6 engine.

REGENERATIVE BRAKING When you apply the brakes, the electric motor captures this kinetic energy and uses it to recharge the battery pack. In essence, Mariner Hybrid is recharging itself – so there's never any need to plug it in. This 330-volt nickel-metal-hydride (NiMH) battery pack, located at the cargo area floor, completes the process by supplying energy to start the engine, to drive at low speeds and to boost acceleration.

STOPPING As you come to a complete stop, the gasoline engine will shut off if it's not needed, conserving fuel and reducing emissions. As soon as you start up, the cycle begins again.

HYBRID PERFORMANCE Hybrid Drive mode is the key to Mariner Hybrid's lively acceleration. Step on the accelerator and the electric motor gives the gas engine, and you, an extra boost of power and torque. An electronically controlled Continuously Variable Transmission (eCVT) keeps shifts smooth.

To track the hybrid powertrain's 3 main modes of operation (Hybrid Drive, Electric Drive and Idle Charging), get Mariner Hybrid's optional Hybrid Energy/Navigation/Audiophile® System. In addition to seeing how long you can keep the vehicle in Electric Drive to get the best mileage, the Navigation System's 6.5" color LCD screen guides you to destinations near and far, while the Audiophile Sound System lets you experience 320 watts of sonic bliss.

A 110-volt power outlet works like an AC outlet in your home to add to Mariner's performance. With it, you can be the hit of the next outdoor gathering, hooking up party lights or even a small TV.¹ And thanks to a standard audio input jack, you can broadcast all of your favorite tunes from your personal music player through Mariner Hybrid's speakers.

MINIMIZING YOUR IMPACT Through Ford's Greener Miles™ relationship with TerraPass, you can neutralize the climate effect of your driving. To learn more, Ford invites you to visit terraypass.com/Ford.

¹See your Owner's Guide for complete details.



LIGHT ICE BLUE

BRILLIANT SILVER

BLACK

KIWI GREEN

WHITE SUEDE

STONE CLOTH

STONE LEATHER

2009 EPA-ESTIMATED FUEL ECONOMY
 FWD 34 mpg city/31 hwy.
 4WD 29 mpg city/27 hwy.



16" 12-SPOKE MACHINED-ALUMINUM
 OPTIONAL



16" 5-SPOKE ALUMINUM
 STANDARD

Hybrid Features.

POWERTRAIN/FUNCTIONALITY • 2.5L iVCT I-4 Atkinson-cycle engine with Permanent-Magnet AC-synchronous electric motor • Electronically controlled Continuously Variable Transmission (eCVT) • 330-volt sealed nickel-metal-hydride (NiMH) battery • Front-wheel drive • Regenerative Braking System • Electric Power Steering (EPS)

EXTERIOR • 16" 5-spoke aluminum wheels with brushed-aluminum center caps • Unique badging on side and rear liftgate • Roof-rack side rails

INTERIOR • 110-volt AC power outlet • Premium cloth front bucket seats with cloth inserts and 6-way power driver seat • SIRIUS Satellite Radio • Mercury SYNC™ voice-activated, in-vehicle communications and entertainment system

SAFETY/SECURITY • Personal Safety System® with dual-stage driver and front-passenger airbags,¹ and Front-Passenger Sensing System • AdvanceTrac® with RSC® (Roll Stability Control™)

AVAILABLE EQUIPMENT • **Hybrid Energy/Navigation/Audiophile® System** Hybrid energy-flow graphic; fuel economy display; Audiophile Sound System with AM/FM stereo/CD/DVD, MP3 capability and 7 speakers; hard drive-based, voice-activated Navigation System features SIRIUS Travel Link™ (with complimentary 6-month subscription) and about 10 gigabytes of digital storage for pictures and music • Intelligent 4WD System • Power moonroof with sunshade and mini-overhead console • 16" 12-spoke machined-aluminum wheels

AVAILABLE PACKAGES • **Premium Package** Premium leather-trimmed, heated front bucket seats; heated sideview mirrors; Hybrid Energy/Navigation/Audiophile System; Ambient Lighting; retractable cargo area cover; roof-rack side rails with satin-aluminum inserts and black crossbars; Reverse Sensing System; body-color sideview mirrors • **Leather Trim Package** Premium leather-trimmed front bucket seats with lumbar controls

¹Always wear your safety belt and secure children in the rear seat.

MARINER HYBRID





Style and Grace.

Plus plenty of SUV-like space. Inside Mercury Mariner, you really do have it all. Satin-pewter accents on the door-trim panels brighten the mood, as do the door handles and floor-mounted shifter that are finished in gleaming chrome. Mariner models feature monotone seats in cloth or available leather trim, while Mariner Premier two-tone seats are outfitted in premium leather trim with unique Alcantara inserts. And Mariner VOGA supplies Cashmere-colored leather-trimmed seats with contrasting Ash stitching. Behind the 60/40 split rear seat, there's 29.2 cu. ft. of cargo space to handle the fresh produce from the farmer's market, as well as all the cooking supplies needed to prepare it. Fold down the rear seat, and even more room (66.2 cu. ft.) is at your disposal.

Passengers in Mariner will appreciate an interior that's hushed at highway speeds. Credit goes to an acoustic-laminate windshield, thick side-window glass, aerodynamically tuned sideview mirrors, low-profile wipers and additional sound-absorbing material. With an interior as stylish as Mariner, you'll want to hear what passengers are saying.



So Much to Store. And So Much More.

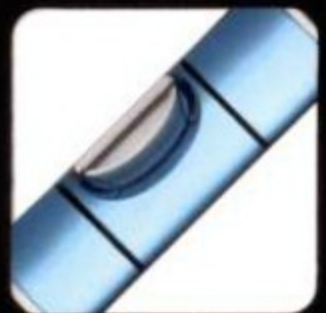
Any study of consumer habits will reveal that we carry everything in our vehicles. The dilemma is where to put it when it's inside. Maybe it's expensive and you want to keep it out of sight. Or maybe it's dripping wet, and you don't want it on the seats or carpet. Whatever the challenge, Mariner has some innovative space and storage solutions.

Behind the rear seats, the available Interior Cargo Management System includes a hidden, lockable storage space under the carpet that's perfect for wet items, helping keep the carpet dry. If dirt is your issue, the rear carpet is also reversible – with an easy-to-clean rubber surface on the underside. Mariner's center console with a 3-tier storage system features 2 removable bins. Leave them in place inside the console if you like, or remove and attach them to the front-passenger side or rear of the console (for use as a trash can or extra storage container). A heavy-duty vinyl cargo shade¹ keeps your belongings out of sight in the rear. Available in colors to match the vehicle interior, it retracts when not in use.

Now that your cargo is safely stored, feel free to enjoy Mariner's amenities. Heated front seats that chase the chills away are available with the Heated Package on Mariner Premier and Hybrid Premium Package on Mariner Hybrid models. The available Dual INVISION[®] DVD Headrests² feature 2 totally independent 7" color TFT LCD monitors incorporated into the front-seat head restraints. Watch the same movie on both screens, or a different one on each. And game/video ports allow connection to portable gaming systems.

¹Available through your Mercury Dealer as a Mercury Accessory. ²Available through your Mercury Dealer as a Dealer-Installed Mercury Licensed Accessory.



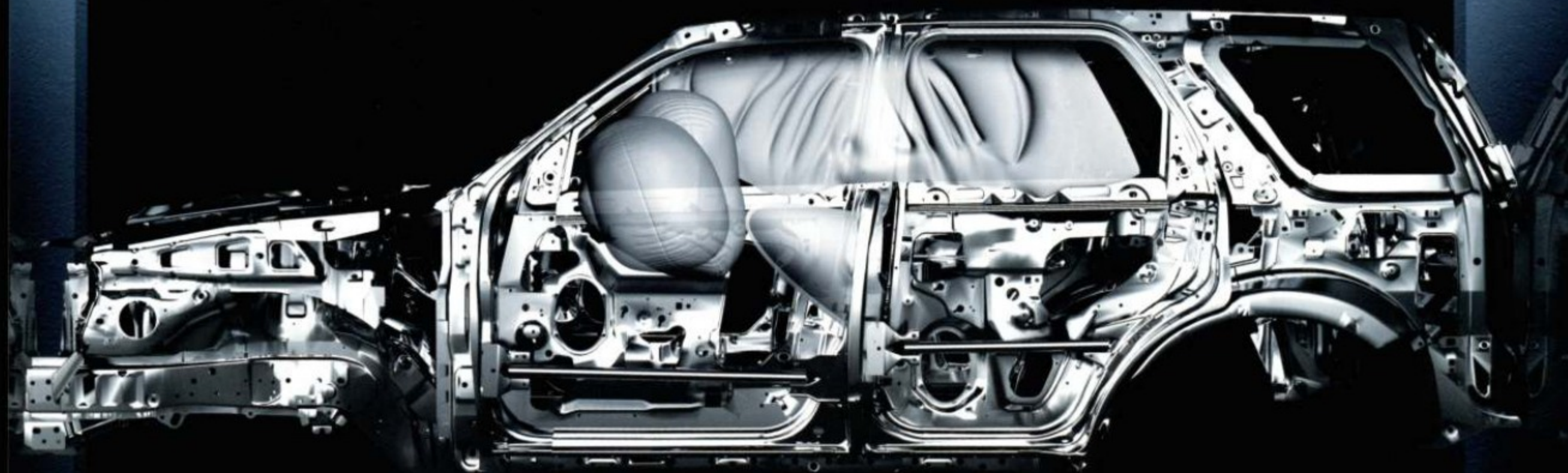


Protection That's on the Level.

AdvanceTrac® with RSC® (Roll Stability Control™) is standard on all 2009 Mercury Mariners. An electronic stability enhancement system that actually measures what other manufacturers' systems ignore or can only estimate, AdvanceTrac with RSC works in conjunction with the Anti-lock Brake System (ABS), traction control and yaw control. A unique vehicle-roll motion sensor directly measures the vehicle's roll-rate over 100 times every second. If understeer, oversteer or a loss of traction is detected, the system will apply individual brakes and modify engine power to help keep all 4 wheels of Mariner firmly planted.

Every 2009 Mariner also features a suite of 6 standard airbags to enhance your protection in the event of an accident. The dual front airbags in the Personal Safety System® are joined by front-seat side airbags and the side-curtain airbags and rollover sensor in the Safety Canopy® System.

Mariner's Electric Power Steering (EPS) system adapts with changing road conditions and vehicle speed, resulting in more confident steering and handling. EPS improves steering feel at low speeds, provides precise steering on the highway, and improves fuel economy by using an electric motor to provide assist to the steering system, applying power only when it's needed.





Sleek, Chic and Sophisticated.

MARINER PREMIER IN LIGHT ICE BLUE METALLIC WITH AVAILABLE EQUIPMENT.



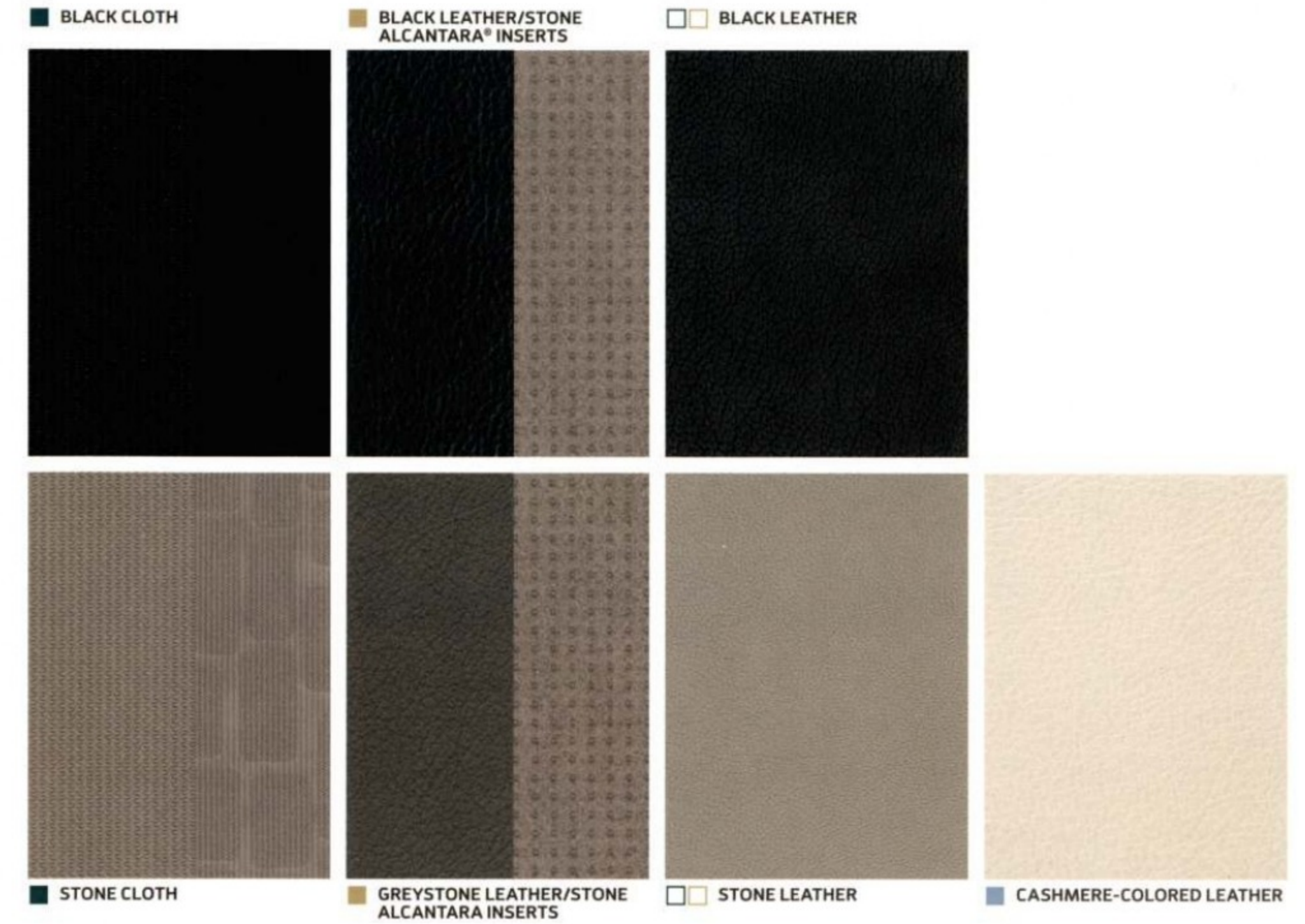
Mercury uses clearcoat paint for beauty and protection. All exterior paints are Metallic except for White Suede and Black. Colors are representative only.
¹New for 2009. ²Available with VOGA Package.



16" 6-SPOKE PAINTED-ALUMINUM
STANDARD ON MARINER



16" 12-SPOKE MACHINED-ALUMINUM
STANDARD ON PREMIER



■ MARINER ■ MARINER PREMIER □ AVAILABLE ■ VOGA PACKAGE



17" 6-SPOKE PAINTED-ALUMINUM
AVAILABLE ON PREMIER



17" CHROME WITH "VOGA" CENTER CAPS
AVAILABLE WITH VOGA PACKAGE

■ STANDARD □ AVAILABLE

| | MARINER | PREMIER |
|-----------------------------------------------------------------------------------------------------------------------------------------------------------------------------------------------------------------------------------------------------------------------------------------------------------------------------------------------------------------------------------------------------------------------------------------------------------------------------------------------------------------------------------------------------------------|---------|---------|
| SAFETY/SECURITY (continued) | | |
| Battery saver | ■ | ■ |
| Belt-Minder® front safety belt reminder | ■ | ■ |
| Dynamic Side-Impact Airbag Package – Front-seat side airbags, ⁴ Safety Canopy® System with side-curtain airbags ⁴ and rollover sensor, and side-impact foam bolsters | ■ | ■ |
| Lower anchors and tether anchors for child-safety seats (LATCH) on rear seat positions | ■ | ■ |
| Remote keyless-entry system with 2 integrated keys, SecuriCode™ keypad and illuminated entry | ■ | ■ |
| Safety belt restraint system with 3-point safety belts in all seating positions and front height-adjustable shoulder belts | ■ | ■ |
| SecuriLock® passive anti-theft ignition system | ■ | ■ |
| Side-intrusion door beams | ■ | ■ |
| Tire Pressure Monitoring System (excludes spare) | ■ | ■ |
| PACKAGES | | |
| Amenities Package – Ambient Lighting, illuminated visor vanity mirrors, auto-dimming rearview mirror, overhead console with dual storage bins, compass, outside temperature readings and autolamp | | ■ |
| AVAILABLE FEATURES | | |
| 3.0L iVCT Duratec V-6 engine with 6-speed automatic transmission | □ | □ |
| 6-way power driver seat | □ | |
| 17" 6-spoke painted-aluminum wheels with P225/65R17 all-season BSW tires | | □ |
| AM/FM stereo/6-disc in-dash CD changer with MP3 capability and 4 speakers | □ | |
| Hard drive-based, voice-activated Navigation System ⁵ (6.5" screen) features SIRIUS Travel Link™ (with complimentary 6-month subscription) and about 10 gigabytes of digital storage for pictures and music; includes Audiophile® Sound System with AM/FM stereo/CD/DVD, MP3 capability and 7 speakers | | □ |
| Integrated side step bars (Black) | □ | □ |
| Intelligent 4WD System | □ | □ |
| Mercury SYNC voice-activated, in-vehicle communications and entertainment system | □ | |
| Roof-rack side rails and crossbars ⁶ (Black) | □ | |
| SIRIUS Satellite Radio ⁶ (with complimentary 6-month subscription) | □ | |
| AVAILABLE PACKAGES | | |
| Amenities Package⁶ (package contents listed above) | □ | |
| Amenities Package Elite⁵ – Dual-zone Electronic Automatic Temperature Control and Reverse Sensing System | | □ |
| Class II Trailer Tow Package⁷ with 3500-lb. maximum towing capacity | □ | □ |
| Heated Package – Heated front seats and sideview mirrors | | □ |
| Leather Trim Package – Premium leather-trimmed front bucket seats with 6-way power driver seat and driver-side manual lumbar support | □ | |
| Moon & Tune Elite Package – Power moonroof with sunshade and mini-overhead console, and Audiophile Sound System with AM/FM stereo/6-disc in-dash CD changer ⁸ with MP3 capability and 7 speakers | | □ |
| Rear Cargo Convenience Package – Retractable cargo area cover and Interior Cargo Management System with lockable wet storage area | □ | □ |
| Sun & SYNC Package⁹ – Mercury SYNC, power moonroof with sunshade and mini-overhead console, and auto-dimming rearview mirror with microphone | □ | |
| VOGA Package⁵ – Chrome grille and rear fascia trim; roof rack with chrome inserts; 17" chrome wheels with "VOGA" center caps; unique "VOGA" exterior badging; premium front floor mats with embroidered "VOGA" logo; Cashmere-colored leather-trimmed seats with contrasting Ash stitching and embroidered "VOGA" logo on front seatbacks; Black treatment on instrument panel center stack, center console and front window switch bezels; and high-contrast interior environment (available only with Black or White Suede exterior colors) | | □ |

MARINER AVAILABLE ACCESSORIES

| |
|--------------------------------------------------------|
| HD Radio ¹⁰ |
| Dual iNVISION® DVD Headrests ¹⁰ |
| Garmin® nüvi® Portable Navigation System ¹⁰ |
| Skyway SmartAlert™ ¹⁰ |
| Trailer hitch |
| Trailer hitch balls/draw bars |
| Wheel locks |
| Keyless entry keypad |
| Electrochromic mirrors |
| Remote start systems |
| Vehicle security system |
| Roof-rail crossbars |
| Thule® accessories ¹⁰ |
| Bug deflector |
| Moonroof deflector |
| Side window deflectors |
| Wiper Shaker ¹⁰ |
| Rear roof spoiler |
| Splash guards |
| Katzkin® Leather seat covers ¹⁰ |
| Cargo-Logic® System |
| Interior cargo net |
| Interior cargo organizer |
| Interior cargo shade |
| Interior cargo area protector |
| Premium carpeted floor mats |
| All-weather floor mats |
| Ashcup/coin holder/Smoker's Pack |

Visit mercuryaccessories.com to use the Accessorizer, learn complete accessory details and view purchase instructions.



BASE MODEL DIMENSIONS

| |
|------------------------------------|
| Wheelbase 103.1" |
| Length 175.2" |
| Width (excluding mirrors) 71.1" |
| Width (including mirrors) 81.3" |
| Width (mirrors folded) 77.9" |
| Height (without options) 67.9" |
| Front track 60.7" |
| Rear track 60.2" |
| Head room (front/rear) 40.4"/39.2" |
| Hip room (front/rear) 53.4"/49.1" |
| Leg room (front/rear) 41.6"/35.6" |

WEIGHTS AND CAPACITIES

| |
|-------------------------------|
| Fuel capacity 16.5 gal. |
| Curb weight |
| 4x2: 3384 lbs./4x4: 3533 lbs. |
| Cargo volume behind 1st row |
| 66.2 cu. ft. |
| Cargo volume behind 2nd row |
| 29.2 cu. ft. |
| Seating capacity 5 |
| Maximum loaded trailer weight |
| 3500 lbs. ³ |

2009 EPA-ESTIMATED FUEL ECONOMY

| |
|---------------------|
| I-4 FWD |
| 20 mpg city/28 hwy. |
| I-4 4WD |
| 19 mpg city/25 hwy. |
| V-6 FWD |
| 18 mpg city/26 hwy. |
| V-6 4WD |
| 17 mpg city/24 hwy. |

³When properly equipped.
⁴Always wear your safety belt and secure children in the rear seat.
⁵Requires Moon & Tune Elite Package.
⁶Requires Sun & SYNC Package.
⁷Requires V-6 engine.
⁸Includes single-CD/DVD player when ordered with Navigation System.
⁹Requires roof-rack side rails and crossbars.
¹⁰Mercury Licensed Accessories.

Alcantara is a registered trademark of Alcantara Spa, Italy.

©2008 SIRIUS Satellite Radio Inc. "SIRIUS," the SIRIUS dog, "SIRIUS Travel Link" and related marks are trademarks of SIRIUS Satellite Radio Inc.

Audiophile is a registered trademark of Audiophile, Inc.

Garmin is a registered trademark of Garmin Ltd.

STANDARD FEATURES

| | MARINER | PREMIER |
|--------------------------------------------------------------------------------------------------------------------------------------------------------------------------------------------------------------------------------------------------------------------------------------------------------------------|---------|---------|
| POWERTRAIN/FUNCTIONALITY | | |
| 2.5L iVCT Duratec I-4 engine with 6-speed automatic transmission | ■ | ■ |
| 4-wheel independent suspension | ■ | ■ |
| 16" 6-spoke painted-aluminum wheels with P235/70R16 all-season BSW tires | ■ | |
| 16" 12-spoke machined-aluminum wheels with P235/70R16 all-season BSW tires | | ■ |
| Electric Power Steering (EPS) | ■ | ■ |
| Front-wheel drive | ■ | ■ |
| Power front disc and rear drum brakes with 4-wheel Anti-lock Brake System (ABS) | ■ | ■ |
| EXTERIOR | | |
| Chrome exhaust tip | ■ | ■ |
| Easy Fuel™ capless fuel-filler system | ■ | ■ |
| Front fog lamps and side repeater lamps | ■ | ■ |
| Power sideview mirrors with manual-fold feature (body-color on Premier) | ■ | ■ |
| Privacy glass on rear doors, rear quarter windows and liftgate | ■ | ■ |
| Roof-rack side rails with satin-aluminum inserts and Black crossbars | | ■ |
| Satin-aluminum grille | ■ | ■ |
| Variable-intermittent front windshield wipers; 2-speed rear with washer | ■ | ■ |
| INTERIOR | | |
| Accessory delay for power features | ■ | ■ |
| Adjustable head restraints (5) | ■ | ■ |
| Air conditioning | ■ | ■ |
| AM/FM stereo/single-CD player with MP3 capability, 4 speakers and clock | ■ | |
| AM/FM stereo/6-disc in-dash CD changer with MP3 capability and 4 speakers | | ■ |
| Audio input jack | ■ | ■ |
| Covered visor vanity mirrors | ■ | ■ |
| Floor console with 3-tier storage system, 2 removable bins, and front and rear cupholders | ■ | ■ |
| Ice Blue interior lighting | ■ | ■ |
| Leather-wrapped steering wheel with cruise and secondary audio controls, and tilt column | ■ | ■ |
| Mercury SYNC™ voice-activated, in-vehicle communications and entertainment system | ■ | ■ |
| Power door locks with child-safety rear door locks | ■ | ■ |
| Power windows with one-touch-down driver-window feature | ■ | |
| Premium cloth front bucket seats with 2-way manual driver seat | ■ | |
| Premium leather-trimmed front bucket seats with Alcantara® inserts, 6-way power driver seat and driver-side manual lumbar support | | ■ |
| Rear 60/40 split-folding seat with tip-fold-flat feature | ■ | ■ |
| SIRIUS Satellite Radio (with complimentary 6-month subscription) | | ■ |
| SAFETY/SECURITY | | |
| Personal Safety System® for driver and front passenger with dual-stage front airbags, ⁴ safety belt pretensioners, safety belt energy-management retractors, safety belt usage sensors, driver-seat position sensor, crash severity sensor, restraint control module and Front-Passenger Sensing System | ■ | ■ |
| AdvanceTrac® with RSC® (Roll Stability Control™) | ■ | ■ |

Comparisons based on 2008 competitive models (Small Sport Utility Vehicle class), publicly available information and Ford certification data at time of printing. Some features discussed may be optional. Vehicles shown may contain optional equipment. Features shown may be offered only in combination with other options or subject to additional ordering requirements or limitations. Dimensions shown may vary due to optional features and/or production variability. Following publication of the catalog, certain changes in standard equipment, options and the like, or product delays may have occurred which would not be included in these pages. Your Lincoln Mercury Dealer is the best source for up-to-date information. Lincoln Mercury reserves the right to change product specifications at any time without incurring obligations.



Get the ride you want. Whether you plan to lease or finance, you'll find the choices that are right for you at Ford Credit. Ask your Lincoln Mercury Dealer for details or check us out at fordcredit.com.

Ford Motor Company Insurance Services Get Ford Motor Company quality in your auto insurance. Our program offers industry-leading benefits and competitive rates. Call 1.877.367.3847, or visit us at fordvip.com for a no-obligation quote. Insurance offered by American Road Services Company (in CA, American Road Insurance Agency), a licensed agency and subsidiary of Ford Motor Company.

Ford Extended Service Plan For a purchase or lease, the Ford Extended Service Plan (ESP) gives you "Peace-of-Mind" protection designed to cover key vehicle components and protect you from the cost of unexpected repairs. Ask your dealer for an ESP, the only service contract backed exclusively by Ford and honored at all Ford Lincoln Mercury dealerships.

Peace of mind comes from a 3-year/36,000-mile bumper-to-bumper **New Vehicle Limited Warranty** that covers repair, replacement or adjustment of parts at no additional cost, as well as a 5-year/60,000-mile powertrain limited warranty which features no deductible and is fully transferable. Roadside Assistance for 5 years or 60,000 miles provides the security of knowing that help may be only a phone call away should you run out of fuel, lock yourself out of the vehicle or need towing. Your Lincoln Mercury Dealer will provide complete details.

Custom Accessories Genuine Mercury Accessories will be warranted for whichever provides you the greatest benefit: 12 months or 12,000 miles (whichever occurs first), or the remainder of your Bumper-to-Bumper 36-month/36,000-mile New Vehicle Limited Warranty. Contact your local Lincoln Mercury Dealer for details and a copy of the limited warranty. Mercury Licensed Accessories (MLA) are warranted by the accessory manufacturer's warranty. Contact your Lincoln Mercury Dealer for details regarding the manufacturer's limited warranty and/or a copy of the MLA product limited warranty offered by the accessory manufacturer.



MERCURY

NEW DOORS OPENED



mercuryvehicles.com