



fleet.ford.com • 1.800.34.FLEET

## To Serve You

### GOVERNMENT SALES REGIONAL MANAGERS

**Don Cobb**  
Northeast States:  
CT, DE, MA, MD, ME, NH, NJ, NY, PA, RI, VT  
860.250.9914  
dcobb@ford.com

**James Morgan**  
Southeast States:  
AL, FL, GA, NC, SC, TN, VA  
901.230.0125  
jmorga12@ford.com

**Jeff Nichols**  
North Central States:  
IA, IL, IN, KY, MI, MN, OH, WI, WV  
313.595.4691  
jnichol3@ford.com

**Greg Dugan**  
South Central States:  
AR, KS, LA, MO, MS, OK, TX  
972.632.8643  
gdugan@ford.com

**Scott Clark**  
Western States:  
AK, AZ, CO, MT, ND, NE, NM, SD, UT, WY  
801.808.4982  
sclark10@ford.com

**Steve Hoe**  
Western States:  
CA, HI, ID, NV, OR, WA  
916.705.5350  
shoe@ford.com

### GOVERNMENT SALES MANAGER

**Tony Gratson**  
313.390.1041  
tgratson@ford.com

### STATE & LOCAL GOVERNMENT SALES MANAGER

**Ron Anderson**  
313.390.1058  
randers1@ford.com

### VEHICLE SPECIAL ORDER (VSO) SALES COORDINATOR

**Cale Kehoe**  
VSO Coordinator  
313.390.0855  
ckehoe1@ford.com

### FEDERAL GOVERNMENT SALES MANAGER

**Debra Hairston**  
313.390.1095  
dhairsto@ford.com

### MUNICIPAL BUSINESS DEVELOPMENT MANAGERS

**Tabitha Crawford**  
CO, CT, DC, DE, IA, ID, IL, MA, MD, ME, MN, MT, ND, NE, NH, NJ, NY, PA, RI, SD, UT, VT, WI, WY  
313.594.1825  
tcrawf22@ford.com

**Janet Doty**  
AK, AL, AR, AZ, CA, FL, GA, HI, IN, KS, KY, LA, MI, MO, MS, NC, NM, NV, OH, OK, OR, SC, TN, TX, VA, WA, WV  
313.390.7184  
jdoty@ford.com

**FORD CREDIT MUNICIPAL FINANCE PROGRAM**  
1.800.241.4199 (Press 1)

### FORD FLEET CUSTOMER SERVICE

Fleet Customer Information Center (FCIC):  
1.800.34.FLEET (U.S.)  
1.800.668.5515 (CANADA)

Open 8:30 AM – 5:00 PM EST

Choose from the following selections:

- FIN Enrollment/Website (Press 1)
- Fleet Sales/Order-to-Delivery (Press 2)

The FCIC supports Fleet Accounts by providing a single source to answer all of your Fleet-related questions.

### POLICE INTERCEPTOR® MODIFIERS GUIDE

Call Center: 877.840.4338  
Downloadable PDF:  
fordpoliceinterceptorupfit.com

## FORD FLEET

North American Fleet, Lease & Remarketing Operations

[www.ford.com/fordpoliceinterceptor](http://www.ford.com/fordpoliceinterceptor)

Some features discussed may be optional. Vehicles shown may contain optional or modifier-installed equipment. Features shown may be offered only in combination with other options or subject to additional ordering requirements or limitations. Information in this brochure was developed from Order Guides as of July 2015. Following publication of this catalog, certain changes in standard equipment, options and the like, or product delays may have occurred which would not be included in these pages. • Always wear your safety belt, secure children in the rear seat and follow airbag warning label instructions. • Ford SYNC®: Driving while distracted can result in loss of vehicle control. Only use SYNC/other devices, even with voice commands, when it is safe to do so. Some features may be locked out while the vehicle is in gear. Not all features are compatible with all phones. • For more information, visit [fleet.ford.com](http://fleet.ford.com). • Ford Motor Company reserves the right to change product specifications at any time without incurring obligations. Comparisons based on competitive models, publicly available information and Ford certification data at time of printing. • Unity is a registered trademark of Unity Manufacturing Co. • Vertex Standard is a trademark of Vertex Standard LMR, Inc. • Whelen is a registered trademark of Whelen Engineering Co., Inc.



# 2016 | POLICE & SPECIAL SERVICE VEHICLES



FORD FLEET



Go Further



**Purpose-Built in the U.S.A.**  
 Engineered in Dearborn. Assembled in Chicago!

## One's Refined, One's Reissued; Both Command R-E-S-P-E-C-T

**United in the fight against crime, the Ford Police Interceptors – comprised of both Sedan and Utility – are America's best-selling pursuit-rated police vehicles<sup>2</sup>** In fact, the made-in-America<sup>1</sup> Ford Police Interceptor<sup>®</sup> lineup is the market-share leader in 41 states.<sup>2</sup> Unique features such as EcoBoost<sup>®</sup> power,<sup>3</sup> Surveillance Mode,<sup>3</sup> Pursuit Mode, safety-oriented telematics,<sup>3</sup> and police-calibrated Intelligent AWD all contribute to the strong demand. So do the roomy, durable front seats, employing slim bolsters for easy ingress and egress.<sup>4</sup> Since the new 2016 Utility and carryover 2015 Sedan hail from the same platform, each one comes equipped with common components and shared key maintenance parts. Actions, of course, speak louder than words: The 365-hp<sup>5</sup> EcoBoost V6-powered<sup>3</sup> Interceptors continue to outgun the V8-equipped competition in official testing<sup>6</sup> (highlighted below; segmented by sedan and utility).

### TOP MARKS FOR POLICE INTERCEPTORS EQUIPPED WITH THE 3.5L ECOBOOST V6<sup>3</sup> AND STANDARD AWD

- ✓ **High-Speed Dynamics: Best Lap Average – Utility**  
 L.A. County Sheriff's Dept. & Michigan State Police
- ✓ **High-Speed Dynamics: Best Lap Average – Sedan**  
 L.A. County Sheriff's Dept.
- ✓ **Pursuit Dynamics: Best Lap Average – Sedan/Utility**  
 L.A. County Sheriff's Dept. (exclusive test)
- ✓ **Acceleration: Best 0-30, 60 & 100 MPH – Sedan/Utility**  
 L.A. County Sheriff's Dept. & Michigan State Police
- ✓ **Acceleration: Best 30-60 & 60-100 MPH – Sedan/Utility**  
 L.A. County Sheriff's Dept. (exclusive test)
- ✓ **Acceleration: Best Quarter Mile – Sedan<sup>7</sup>/Utility**  
 L.A. County Sheriff's Dept. & Michigan State Police
- ✓ **Braking: Best 60-0 MPH – Utility**  
 L.A. County Sheriff's Dept. & Michigan State Police

<sup>1</sup>Assembled in the U.S.A. with domestic and foreign parts. <sup>2</sup>Based on IHS Polk U.S. Police Industry registration data through May 2015. <sup>3</sup>Available feature. <sup>4</sup>Compared to the previous generation. <sup>5</sup>Tested with 93-octane fuel. <sup>6</sup>Based on Michigan State Police and L.A. County Sheriff's Dept. test results for 2015 models. <sup>7</sup>Statistical tie for best time in L.A. County Sheriff's Dept. testing.



## New 2016 Police Interceptor® Utility Is The Law's Top Enforcement Pick<sup>1</sup>

### North America's best-selling pursuit-rated police vehicle<sup>1</sup> receives a refresh.

Previously, the direct-injected, twin-turbocharged, 365-hp<sup>2</sup> 3.5L EcoBoost® V6 was made available, and the front seats were markedly improved for greater room and durability, plus quicker entry and exit.<sup>3</sup> This year, exterior styling is sleeker, with new front and rear fascias, plus strategically placed air curtains that improve aerodynamics. The new, bolder grille boosts cooling and is now common to every model. It's flanked by new headlamps with LED low beams – halogen high beams can wig-wag<sup>4,5</sup> Taillamps are redesigned, the decklid lock cylinder is relocated, and there's a new downforce-inducing rear spoiler. Spacious accommodations are fortified with new instrumentation, a new steering wheel setup, and a new center stack with larger controls for improved ergonomics. A new liftgate release switch in the overhead console is not only handy, but helps provide added security by relocking the mechanism after 45 seconds if unopened. One-touch-up/-down power driver and front-passenger windows and a rear view camera with washer are now standard – the camera display in the 4" center-stack LCD screen is standard too, or choose to have that display in the rearview mirror as a no-charge option. The new Individual Tire Pressure Monitoring System (TPMS) displays pinpoint accuracy. Surveillance Mode technology<sup>4,6</sup> alerts for a presence behind the vehicle. And the new Ford Telematics™ powered by Telogis® – Law Enforcement Edition<sup>4,7</sup> displays insights into driver behavior, engine performance and much more through a single portal. *Unchanged* interior dimensions means current equipment can readily transfer, and some common components – front seats, brakes, etc. – are shared with the Sedan.

### The 2016 Ford Police Interceptor Utility also features a new Shadow Black exterior, a new Blue Jeans exterior, and a slew of lighting solutions<sup>4</sup> that include:

- New forward indicator pocket warning lamps<sup>8</sup> – custom-designed, multifunctional Park/Turn/Warn (PTW) LED assemblies integrated into the headlamp system
- New front warning auxiliary lamps<sup>8</sup> – integrated, custom-designed LED assemblies
- New taillamp housing<sup>9</sup>
- Front Headlamp Lighting Solution, and Taillamp Lighting Solution – each with side warning LEDs; headlamps have high-beam halogen bulbs for wig-wag simulation<sup>5</sup>
- Sideview mirror side markers – backlit-flashing, linear, high-intensity LEDs
- Spot lamps – high-intensity LEDs and swivel mounts
- Integrated grille lamps – high-intensity LEDs (Ready-for-the-Road Package only)
- Rear quarter-glass side markers – wide-angle LEDs



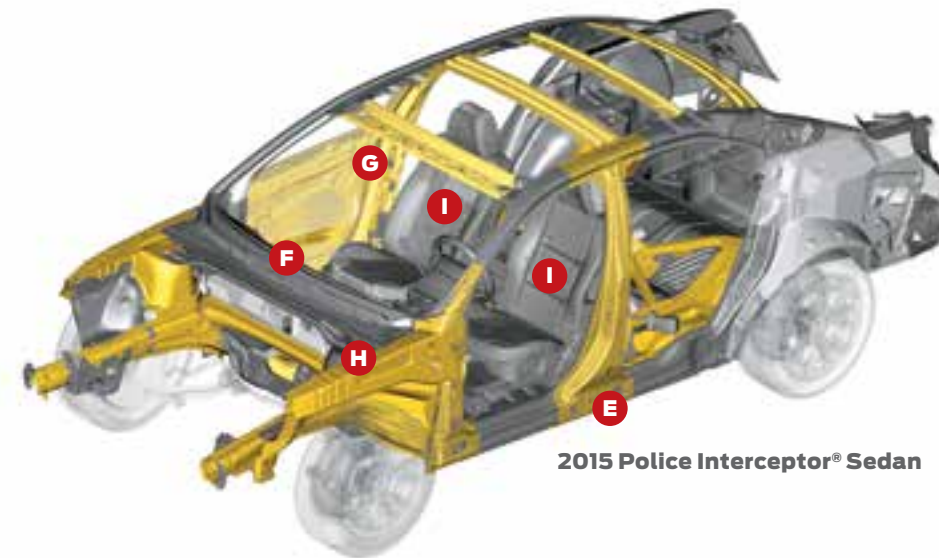
<sup>1</sup>Based on IHS Polk U.S. Police Industry registration data through May 2015. <sup>2</sup>Tested with 93-octane fuel. <sup>3</sup>Compared to the previous generation. <sup>4</sup>Available feature. <sup>5</sup>Does not include controller. <sup>6</sup>System can be configured to meet specific agency needs. For new-production ship through, contact Crown North America at 1.800.321.4934, ext. 3425, or visit [crown-na.com](http://crown-na.com). For aftermarket system ordering, contact Intermotive Vehicle Controls at 1.800.969.6080, or visit [intermotive.net](http://intermotive.net). <sup>7</sup>Ford Licensed Accessory. <sup>8</sup>Requires pre-wiring for grille lamp, siren and speaker. <sup>9</sup>Does not include installation of LEDs.



## Officer Protection Comes First (Proof Is in the Details)

- A. 75-mph rear-impact crash tested!** Ford Police Interceptors continue a proud tradition of being the only pursuit-rated vehicles to pass extreme rear-impact crash testing! The Special Service Police Sedan passes too.
- B. Surveillance Mode<sup>2,3</sup>** This system warns that someone is approaching the rear of the vehicle. Upon detection, a chime sounds, the driver's window automatically rises and all doors lock. Intermittent Fault Filter<sup>®</sup> (IFF) technology sifts out erroneous changes in sensor signals.
- C. Manual key lock cylinders.** The 3 exterior cylinders – on the front doors and decklid/liftgate – provide quick, reliable access with a simple fleet key.
- D. Ballistic front-door panels.<sup>2</sup>** Manufactured by DEW Engineering, each panel is certified to full NIJ Level III specifications<sup>4</sup> – National Institute of Justice Standard 0108.01. Per LAPD (Los Angeles Police Department) requirements, they're also designed to withstand special-threat rounds<sup>4</sup> – 7.62 x 39 mm mild steel core type 56, plus 5.56 x 45 mm M193 and M855.

- E. SPACE (Side Protection And Cabin Enhancement) Architecture.** A hydroformed cross-vehicle beam solidifies the vehicle's sides.
- F. Multiple airbags.<sup>5</sup>** Just in case, the front-seat Personal Safety System<sup>™</sup> (with front airbags), front-seat side airbags, and 1st- and 2nd-row Safety Canopy<sup>®</sup> System (housing side-curtain airbags) are at the ready.
- G. Hidden rear door-lock plungers.<sup>2</sup>** These out-of-sight plungers are manually operable only by officers in front.
- H. Virtual force field of assurance.** Safety cell construction helps direct the force of a collision around the occupant compartment. Ultra-high-strength boron steel, high-strength aluminum alloy, and advanced plastics add reinforcement.
- I. Extra-tough anti-stab plates.** To help keep unruly types at bay, deflective steel intrusion plates are built into the driver and front-passenger seat backs.



<sup>1</sup>The full-size spare tire secured in the factory location is necessary to achieve police-rated 75-mph rear-impact crash-test performance attributes. <sup>2</sup>Available feature. <sup>3</sup>System can be configured to meet specific agency needs. For new-production ship through, contact Crown North America at 1.800.321.4934, ext. 3425, or visit crown-na.com. For aftermarket system ordering, contact Intermotive Vehicle Controls at 1.800.969.6080, or visit intermotive.net. <sup>4</sup>Contact 1-800-34-FLEET for panel performance specifications. Visit fleet.ford.com for more details. **Warning: As with any body armor, protection provided by the ballistic door panel is limited. Certain rounds or combinations of rounds may penetrate the panel and cause serious injury or death.** <sup>5</sup>Always wear your safety belt and follow airbag warning label instructions.

## Get a Grip: They're the Only Pursuit-Rated Vehicles with AWD<sup>1</sup> Standard

**Police-calibrated Intelligent AWD isn't an add-on package – for every Ford Police Interceptor,<sup>®</sup> it's a full-time, self-activating system that continually adjusts torque distribution during all conditions.** And it's easy to operate: Just drive. Preemptive torque is delivered by the millisecond among all 4 wheels to help maximize traction in snow or rain, on ice or gravel, and even when maneuvering on dry pavement. An active, on-demand coupler allocates a precise amount of torque from the front to the rear; up to 100% of available torque to either axle. There's no delay in delivery, and no wayward noises or clunks emanate from the system. Aggressive handling at any speed is predictable and easy. Intelligent AWD was co-developed with EVO<sup>®</sup>C (Emergency Vehicle Operator Course) instructors for the utmost responsiveness and performance in challenging situations.

**Police-programmed AdvanceTrac<sup>®</sup> electronic stability control provides the confidence to hit corners hard.<sup>2</sup>** Monitoring driving situations through wheel speeds, steering angle, lateral acceleration, and vehicle rotation for both the vertical yaw axis and horizontal roll axis, AdvanceTrac adjusts automatically. To help avoid skidding and fishtailing, it utilizes the Anti-Lock Brake System (ABS) and all-speed traction control whenever wheelslip, understeer, oversteer or roll motion is detected. Roll Stability Control<sup>™</sup> is unique to the Utility: Gyroscopic sensors check body-roll angle at least 100 times per second.



## Power on Demand: EcoBoost® Responds Without Hesitation, in Cold or Heat



**High-powered Police Interceptor® V6 output is just the ticket to optimize closing speed for rapid takedowns.** Generating a formidable 365 hp<sup>1</sup>, the twin-turbo, direct-injection EcoBoost® V6 – tuned exclusively for police operations, and now available on both the Utility and Sedan – also delivers a powerful flat torque curve across the rev range. Output for the standard 3.7L V6 Interceptor Utility is a robust 304 horses. A 305-hp flex-fuel<sup>2</sup> 3.7L V6 is standard on the Interceptor Sedan AWD, while the available FWD-configured Interceptor Sedan performs with a 288-hp, flex-fueled 3.5L V6. Naturally aspirated V6 muscle employs twin independent variable camshaft timing (Ti-VCT) to help achieve peak power or efficiency, as conditions warrant.

**Shift points for the 6-speed automatic are programmed to maximize V6 acceleration.** The transmission adapts to officer driving habits, tracking maneuvers for optimal response in cruising situations as well as pursuit mode. Police-tuned, electric power-assisted steering (EPAS) ensures light turning effort at low speeds. Suspension components are finely calibrated for deft maneuvering at any speed. All of which reinforces the maxim of “Just drive.”

**Engine and transmission components are backed by the assurance of the earlier of 5 years or 100,00 miles with Ford Protect PowertrainCARE.<sup>3</sup>** This coverage is further proof of the faith in dependability – backed by Ford Motor Company, honored at all Ford Dealerships, and fixed with Ford authorized parts installed by factory-trained and -certified technicians.

## 6 EXTRAORDINARY POWERTRAINS – EMPLOYING SMART 6-SPEED TRANSMISSIONS – OFFER DISTINCT PERFORMANCE AND EFFICIENCY ADVANTAGES OVER THE COMPETITION:

|  | <br>2016 Interceptor Utility 3.7L Ti-VCT V6 FFV <sup>2</sup> (Standard) | <br>2016 Interceptor Utility 3.5L EcoBoost V6 (Optional) | <br>2015 Interceptor Sedan 3.7L Ti-VCT V6 FFV <sup>2</sup> (Standard) | <br>2015 Interceptor Sedan 3.5L Ti-VCT V6 FFV <sup>2</sup> (Optional) | <br>2015 Interceptor Sedan 3.5L EcoBoost V6 (Optional) | <br>2015 Special Service Sedan 2.0L EcoBoost I-4 (Optional) |
|--|---|--|---|---|--|---|
| Horsepower (hp @ rpm)                    | 304 @ 6,500   | 365 @ 5,500 <sup>1</sup>                                 | 305 @ 6,500   | 288 @ 6,500   | 365 @ 5,500 <sup>1</sup>                               | 240 @ 5,500 <sup>1</sup>                                    |
| Torque (lb.-ft. @ rpm)                   | 279 @ 4,000   | 350 @ 1,500-5,000 <sup>1</sup>                           | 279 @ 4,000   | 254 @ 4,000   | 350 @ 1,500-5,000 <sup>1</sup>                         | 270 @ 3,000 <sup>1</sup>                                    |
| Drivetrain                               | All-wheel drive   | All-wheel drive  | All-wheel drive   | Front-wheel drive   | All-wheel drive  | Front-wheel drive   |
| Top speed (mph) <sup>4</sup>             | 131   | 131  | 131   | 131   | 148  | 120   |
| EPA-estimated ratings (mpg) <sup>5</sup> | 15 city/20 hwy  | 15 city/20 hwy   | 18 city/25 hwy  | 18 city/26 hwy  | 16 city/23 hwy   | 20 city/30 hwy  |
|  |   |  |   |   |  |   |

<sup>1</sup>Tested with 93-octane fuel. <sup>2</sup>Flex fuel is not available in states with California emissions standards: CA, CT, MA, MD, ME, NJ, NY, OR, PA, RI, VT and WA. <sup>3</sup>The earlier of 5 years or 100,000 miles with PowertrainCARE coverage is a Ford Protect Ford Extended Service Plan (ESP) – with a zero deductible – that’s standard on all Police Utility and Sedan models, except in Florida and New York, where it is the earlier of 5 years or 100,000 miles with a PowertrainCARE Limited Warranty. See your dealer for full details. In Texas, Ford ESP is a Service Contract from Ford Motor Service Company (License #SCP-165). <sup>4</sup>Electronically limited in police powertrain calibrations. <sup>5</sup>Actual mileage will vary.



## Going Beyond the Call

**Heavy-duty durability is a result of being tested thoroughly.** Evaluations are scrutinized for structural and mechanical integrity.

**Heavy-duty steering and suspensions respond in the name of control, capability and comfort.** Electric power-assisted steering (EPAS) adjusts to vehicle speed, crowned roads and crosswinds. For smooth, predictable, high-speed handling at every turn, the front and multilink rear suspensions are fully independent – each one also incorporates a sturdy stabilizer bar to combat body lean. Helical coil springs and stiffened, gas-pressurized hydraulic shocks are made for the rigors of police work. Premium hubs and bearings are extra-large for extra-long durability. The unique Ford designed underbody deflector plate<sup>1</sup> helps divert debris and guard against scrapes – crucial to the integrity of the oil pan. The plate's shape facilitates oil-filter changes.

**Heavy-duty anti-lock disc brakes contribute to extreme high performance.** Because police vehicles don't just need to go fast, they must halt rapidly – under control. Developed in association with the Los Angeles County Sheriff's Department and Michigan State Police, this long-wear-life system's unique, inverted-hat vented rotors are paired with unique calipers and pads for high thermal capacity.

**Heavy-duty cooling system regulates extreme heat.** The high-capacity radiator, engine oil cooler and transmission fluid cooler – working with the police-calibrated fan and grille – optimize operation in times of pursuit or periods of idling.

**Heavy-duty wheels are teamed with police-purposed tires.** Hefty 18" steel wheels are designed to withstand the punishment of daily duty no matter where the trail leads. The 5-spoke design lets the brakes breathe freely and stay cool. Tires are constructed to maximize grip, handling, rigidity and tread wear. To keep things rolling, the spare is not only full size, it's equipped with a Tire Pressure Monitoring System (TPMS) sensor. While TPMS is a standard vehicle feature, the Utility now takes it one step further with Individual TPMS, which can display exact pressure figures – tire by tire.

**Heavy-duty alternator meets demands.** Ample support for radar, lights, radios, cameras, computers and more.

**Heavy-duty door tethers strengthen hinge action during police work.** A front-door exclusive.



Protective deflector plate.<sup>1</sup> (Sedan shown.)



Large swept-area caliper with 13" rotor.



Purpose-built tire and wheel.



Supplemental front-door tether.



Police Interceptor® Sedan.



A



B



C



D



E

## From Electronics to Ergonomics, It's One Heckuva Law-Abiding Cockpit

**Police-purposed cabin.** Within the ergonomically designed living quarters of the Sedan and Utility, police-specific amenities are numerous. A pair of info-packed MyFord® screens **A** – featuring an engine-idle meter readout – can be operated by 5-way steering wheel-mounted controls. The certified speedometer (also available in digital format through a MyFord screen) provides accurate readouts at a glance, and an engineered-in, column-mounted shifter **B** is a durable space saver. For convenience, pedals **C** are adjustable, and the Sedan trunk release **D** or new Utility liftgate release are finger-touch-activated. Dual 12-volt powerpoints **E** are also quick-access handy.

**Voice-activated Ford SYNC.<sup>®1,2</sup>** Once paired, SYNC recognizes a cell phone and supports hands-free voice calling. Press a switch on the steering wheel, then speak commands. SYNC Services<sup>3</sup> provides turn-by-turn driving directions,<sup>2</sup> custom traffic alerts,<sup>2</sup> and much more. SYNC even enables some verbal command of devices plugged into the USB port<sup>1</sup> **F** that's conveniently integrated with an auxiliary audio input jack. (Check out [www.ford.com/technology/sync](http://www.ford.com/technology/sync) for more details.)

**Customizable, auxiliary control buttons!** Minimize distraction while performing police tasks on the go: Ford engineers integrated 4 remappable switches **G** (Sedan shown) on the steering wheel. They can connect the driver to aftermarket equipment, including lights, sirens, speakers and canine door releases. Whatever the need, grounded outputs are on board for use with the switches.

**Aftermarket cost-savings potential.** A recessed universal top tray **H** is sized ideally for speed-sensing systems. The removable, Ford designed steel console mounting plate **I** is another solid foundation for aftermarket equipment. Center-console space measures a wide-open 9" between the driver and front-passenger seats, matching the width of the Crown Victoria Police Interceptor (CVPI) center console. So transfer of an existing CVPI apparatus is easy and direct; channel wiring from the back of the vehicle and/or the instrument panel.

**Radar detection.** While driving, BLIS® (Blind Spot Information System) with cross-traffic alert<sup>1,4</sup> can lend an assist before changing lanes: Look for an amber warning light in a sideview mirror if a vehicle is detected on either side. When slowly backing up, cross-traffic alert sounds an alarm, flashes a light in the sideview mirror, and issues a message-center notice if any vehicles are sensed to be approaching – from up to 15 yards away.

**More ways to raise awareness.** The ultrasonic Reverse Sensing System<sup>1</sup> issues audible notifications when objects are recognized within 6' of the vehicle while slowly backing up. A rear view camera<sup>4</sup> **J** that transmits a full-color image of what's happening behind is now standard – with a washer – on the Utility (view the image on the standard center-stack screen or choose to have it displayed in the rearview mirror instead, at no charge); opt for a camera<sup>1</sup> on the Sedan. Surveillance Mode<sup>1,5</sup> is another way to add “eyes” in back: It utilizes existing driver-assist technologies to warn the driver, roll up the driver's window, and lock all doors when an individual is detected moving near the vehicle's rear.



H



F



G



I



J



Police Interceptor Utility.

<sup>1</sup>Available feature. <sup>2</sup>Driving while distracted can result in loss of vehicle control. Only use mobile phones and other devices, even with voice commands, when it is safe to do so. Not all features are compatible with all phones. <sup>3</sup>SYNC Services varies by trim level and model year and may require a subscription. Traffic alerts and turn-by-turn directions available in select markets. Message and data rates may apply. Ford Motor Company reserves the right to change or discontinue this product service at any time without prior notification or incurring any future obligation. <sup>4</sup>Driver-assist features are supplemental and do not replace the driver's attention, judgment and need to control the vehicle. <sup>5</sup>System can be configured to meet specific agency needs. For new-production ship through, contact Crown North America at 1.800.321.4934, ext. 3425, or visit [crown-na.com](http://crown-na.com). For aftermarket system ordering, contact Intermotive Vehicle Controls at 1.800.969.6080, or visit [intermotive.net](http://intermotive.net).





## Utility: as Comfortable as It Is Capable

**A big patrol vehicle that accommodates officers big-time.** This intimidating-to-criminals ride offers commanding views and presence. Head room, shoulder room and hip room are generous throughout. Since every second counts, the front seats feature slim, uniquely shaped seat back bolsters that enable officers to quickly and ergonomically get in, get going and get out. Those minimized bolsters supply ample room for a holstered pistol (left- or right-hand). Front seats are also reinforced with extra-tough, long-wear cloth to help ensure resistance against gun butts, duty belts and other implements. To allow for a finessed officer fit, the 6-way power driver's seat is standard; a 6-way power front-passenger seat is newly available.

**60/40 split-fold bench in back.** Reconfigure it as circumstances dictate, or quickly and conveniently fold the full bench for a capable 85.1 cu. ft. of load space. Recessed seating positions are outfitted in easy-clean vinyl.

**Capacity for cargo, carbines and canines too.** cavernous carry-all room makes the Utility the perfect choice for K-9 officers and SWAT team members with gear. Devices and dogs can be kept cooler with the auxiliary air conditioning.<sup>1</sup> Without compromising the 800-lb. load-floor capacity or the increased 1,630-lb. standard payload capacity, a full-size spare – complete with TPMS sensor – is stored under the flat workspace. And now the liftgate can be unlocked simply at the pull of a switch in the cabin's overhead console.



## Sedan: as Comfortable as It Is Practical

**Improved front seats and modified B-pillar trim:** Compared to the previous generation of seating, reduced seat back bolsters create a noticeable, time-saving difference when rushing in and out of the vehicle. When officers are buckled up, those redesigned bolsters supply room for a holstered pistol. Seat-wear resistance is test-proven to be greater than the previous material. Dramatically slimmed B-pillar trim<sup>1</sup> for both the driver and front passenger allows for easier entrances and exits, along with creating more outboard elbow room. Note: The high-strength steel pillar on each side wasn't touched – only a 2-piece section of front trim was redesigned. A 6-way power driver's seat is standard; the 6-way power front-passenger seat is available.

**Exemplary rear-seat transport.** The rear bench maximizes space and is wrapped in heavy-duty vinyl. Access is made easy with wide-opening rear-door hinges (a Sedan exclusive). Door panels are simplified – no mapholders or cupholders – for ease of cleaning. For added security, hidden, manual door-lock plungers<sup>2</sup> can be ordered on each rear door.

**Super-capacity trunk.** A wealth of low-liftover room stows equipment out of sight. Pull up the flat load floor for the standard full-size spare stationed inside. It's identical to the other 4 wheels and comes ready-to-roll with a TPMS sensor. A slide-out, custom-fit electronics tray<sup>1</sup> and an auto-running circulation fan<sup>2</sup> are designed to keep conditions temperate for sensitive devices.



# New Ford Telematics™ Powered by Telogis® – Law Enforcement Edition<sup>1</sup> Encourages Safe, Efficient Driving

- Idle Time
- Harsh Acceleration/Braking
- Light-Bar Status
- MPG
- ABS Events



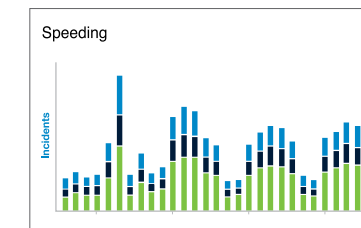
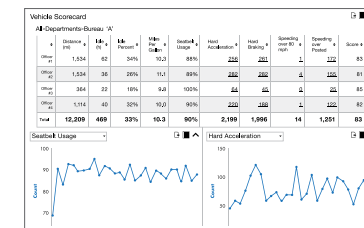
## FORD TELEMATICS™ Powered by Telogis® - Law Enforcement Edition

**This new, powerful telematics solution was expressly built for integration with Ford police vehicles and the special demands of law enforcement.** Ford Telematics tracks real-time vehicle status across an entire fleet via a single web portal to foster safety, efficiency and productivity. Authorized personnel have secure access to both real-time and historical intelligence on numerous subjects, including driving behavior, and vehicle location and health. Details are delivered through a GPS-enabled “black box” – that constantly processes and records data – connected to the vehicle’s computer systems.

**Encourage safe driving behavior.** Ford is committed to vehicle safety; Ford Telematics provides the ability to extend this commitment beyond the vehicle, helping to improve driving behavior. Driver safety scorecards and dashboards provide at-a-glance insight into safety belt utilization, excessive speeding, harsh acceleration, hard braking, and other objective vehicle information. Empowering officers with details about their driving habits can assist with training and promote safe driving, which helps reduce collisions, injuries and liability.

**Trim maintenance costs and reduce downtime with new fleet insights.** In addition to helping to avoid catastrophic and costly vehicle failures, proactive maintenance can result in less vehicle downtime and longer vehicle life. Efficiently monitor routine maintenance needs, then send real-time alerts directly to the service department to schedule appointments.

**Get the system safeguards that law enforcement agencies demand.** Understanding that agency security is crucial, Ford Telematics manages vehicle location and other data in different streams; communications are firewalled, separated and secure. Data is accessible only to authorized users – and that access is encrypted.



### STANDARD FEATURES

- Miles driven
- Vehicle location
- Effective utilization
- Excessive speeding events
- Airbag deployment indicator
- Harsh acceleration
- Hard braking
- Safety belt use
- Light-bar status
- ABS events
- Stability/traction control events
- 50+ analytic reports
- Real-time insight alerts
- Fleet overview dashboard
- Animated vehicle history
- Fuel economy

# Standard Features, Plus Drivetrains, Powertrains & Wheels

2015 Police Interceptor® Sedan and New 2016 Police Interceptor Utility

## STANDARD FEATURES

9" space between driver's seat and front-passenger seat for aftermarket consoles

12-volt powerpoints (2)

75-mph rear-impact crash tested<sup>1</sup>

All-wheel drive (AWD)

Alternator – Heavy-duty 220-amp<sup>2</sup>

Audio – AM/FM stereo/single-CD player with MP3 capability, clock and 4 speakers (Sedan), 6 speakers (Utility)

Badge – Flex Fuel/AWD

Badge – Police Interceptor<sup>2</sup>

Battery – Heavy-duty (78-amp-hr/750 CCA)

Brakes – 4-wheel heavy-duty disc with Anti-Lock Brake System (ABS) (police-calibrated)

Built-in steel intrusion plates in both front seat backs

Climate controls – Manual air conditioning and rear defrost

Column-mounted shifter

Console mounting plate – Front

Cooling system – Heavy-duty

Cruise control

Door-sill scuff plates – Front and rear

Easy Fuel<sup>®</sup> capless fuel filler

Electric power-assisted steering – Heavy-duty

Engine – 3.7L Ti-VCT V6 FFV

Engine-hour meter

Engine idle meter

Exterior key locks – Driver and front-passenger doors and decklid/liftgate

Fleet key – Low-cost replacement

Flooring – Heavy-duty vinyl

Front fascia lower grille

Full-size spare wheel and tire with TPMS

Glass – Solar-tinted (Sedan)

Glass – Solar-tinted 1st row; privacy glass 2nd row and rear quarter and liftgate (Utility)

Headlamps – Projector-beam halogen (Sedan)

Headlamps – LED low beams; incandescent (halogen) high beams (Utility)

Headliner – Easy-to-drop

Independent front and rear suspensions

Liftgate unlock switch – Overhead console (Utility)

Mirrors – Power sideview, manual foldaway with integrated blind spot mirrors

MyFord<sup>®</sup> with 4.2" color LCD displays including digital speed readout in police instrument cluster and center stack "smart display"

Power-adjustable pedals

Power door locks

Power windows with one-touch-up/-down driver's side with disable feature (Sedan)

Power windows with one-touch-up/-down driver/front-passenger side with disable feature (Utility)

Powertrain mounts – Heavy-duty

Rear recovery hook (Utility; 3.5L EcoBoost<sup>®</sup> is late availability)

Red/white dome light – 1st row

Redundant digital speedometer display

Seat – Front heavy-duty cloth, 6-way power driver's with manual lumbar

Seat – Front heavy-duty cloth passenger

Seat – Rear vinyl bench (Sedan)

Seat – Rear vinyl 60/40 split (Utility)

Taillamps – Halogen (Sedan)

Taillamps – LED (Utility)

Tilt/telescoping steering column (Sedan)

Tilt steering column (Utility)

Tires – 245/55R18 all-season BSW

Tires – 235/55R18 all-season BSW (Sedan with 2.0L EcoBoost)

Transmission – 6-speed automatic (police-calibrated)

Trunk/cargo area – Flat load floor

Underbody deflector plate<sup>2</sup> (Sedan; Utility with 3.5L EcoBoost)

Universal top tray for police equipment

Wheels – Heavy-duty 18" 5-spoke steel

## STANDARD SAFETY & SECURITY

Advanced, ultra-high-strength boron steel in the A-, B- and C-pillars

AdvanceTrac<sup>®</sup> electronic stability control (Sedan)

AdvanceTrac with RSC<sup>®</sup> (Roll Stability Control™) (Utility)

Airbag – Front-passenger knee (Utility)

Airbags – Front-seat side, plus Safety Canopy<sup>®</sup> System with side-curtain airbags and rollover sensor

Child-safety rear door locks

Ignition-wired trunk release (Sedan)

LATCH – Lower Anchors and Tether Anchors for Children in rear outboard seating positions

Personal Safety System™ for driver and front passenger<sup>3</sup>

Rear view camera with washer (Utility)

SOS Post-Crash Alert System™

SPACE (Side Protection And Cabin Enhancement) Architecture

Tire Pressure Monitoring System (TPMS); Utility features a true location Individual TPMS

Traction control

## DRIVETRAINS

Police Interceptor Sedan (AWD) – Standard

P2M

Police Interceptor Sedan (FWD) – Optional; 501A – Standard

P2L

Police Interceptor Utility (AWD) – Standard

K8A

## POWERTRAINS

### Sedan

3.7L Ti-VCT V6 FFV with 6-speed automatic transmission – Standard (top speed 131 mph)  99K

3.5L Ti-VCT V6 FFV with 6-speed automatic transmission – Optional (top speed 131 mph)  998

3.5L EcoBoost V6 with 6-speed automatic transmission – Optional (top speed 148 mph)  99T

2.0L EcoBoost I-4 with 6-speed automatic transmission<sup>4</sup> – Optional (top speed 120 mph)  999

### Utility

3.7L Ti-VCT V6 FFV with 6-speed automatic transmission – Standard (top speed 131 mph)  99R

3.5L EcoBoost V6 with 6-speed automatic transmission – Optional (top speed 131 mph)  99T

## WHEELS



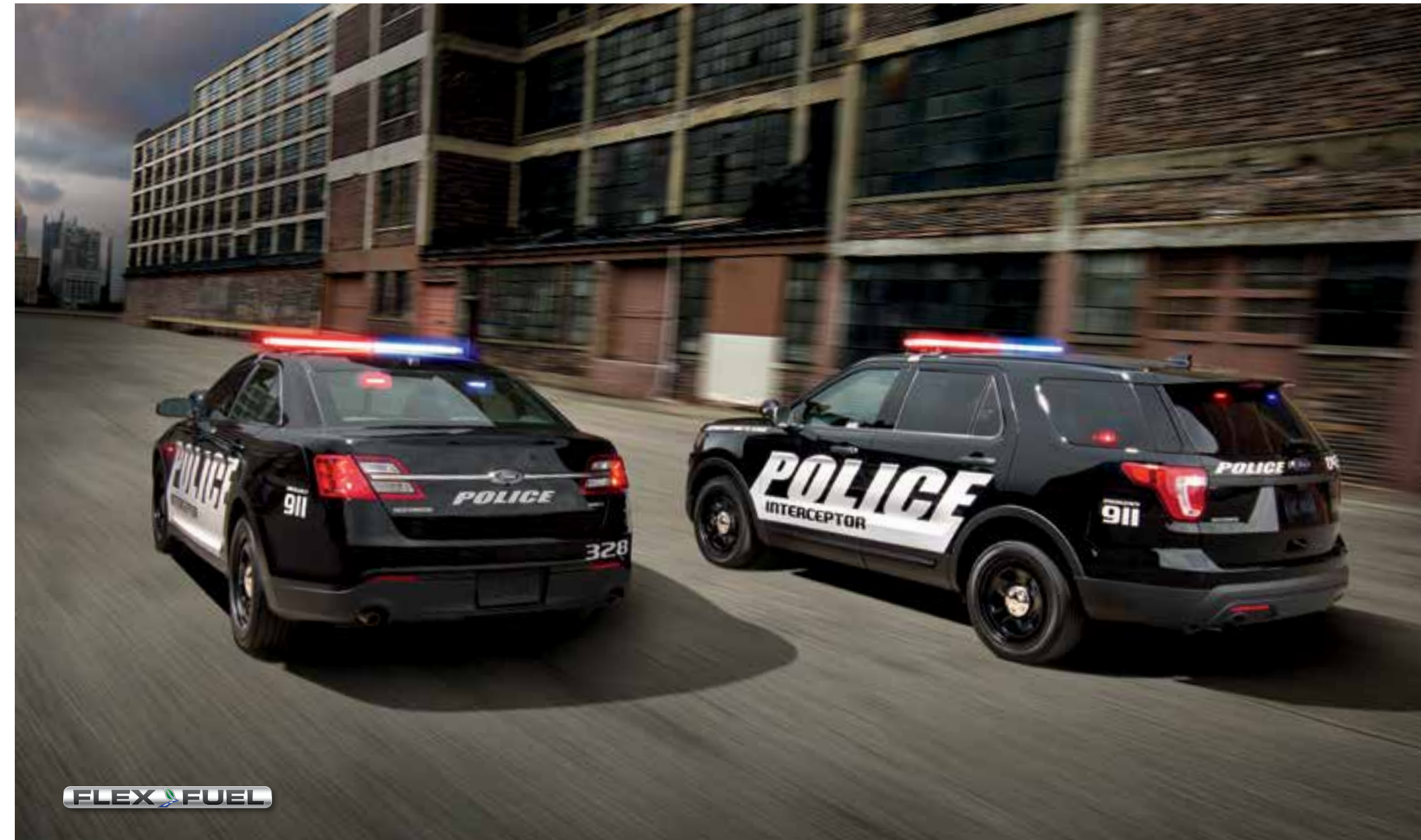
Standard: Set of 5 heavy-duty 18" 5-spoke steel wheels with center caps (5th wheel is full-size spare)



Optional: Set of 4 heavy-duty 18" full-face wheel covers with metal clips (65L)



Optional: Set of 4 18" painted aluminum wheels (Sedan 642/Utility 64E)



# Options, Packages, Vinyl Treatments & Dimensions

2015 Police Interceptor® Sedan and New 2016 Police Interceptor Utility

## OPTIONS<sup>1</sup>

|  | Sedan                        | Utility                      |
|--|------------------------------|------------------------------|
| 1st- and 2nd-row carpeting   | <input type="checkbox"/> 17I | <input type="checkbox"/> 16C |
| <b>NEW – 6-way power front-passenger seat with manual lumbar and recline</b>               | <input type="checkbox"/> 61P | <input type="checkbox"/> 87P |
| 18" full-face wheel covers (4)   | <input type="checkbox"/> 65L | <input type="checkbox"/> 65L |
| 18" painted aluminum wheels (4)  | <input type="checkbox"/> 64Z | <input type="checkbox"/> 64E |
| 100-watt siren/speaker   | <input type="checkbox"/> 96P | <input type="checkbox"/> 18X |
| Automatic headlamps  | <input type="checkbox"/> 55D | <input type="checkbox"/> 86L |
| Badge delete – Deletes all "Interceptor"/"Special Service Police" badging                  | <input type="checkbox"/> 19D | <input type="checkbox"/> 16D |
| Ballistic door panels – Driver's door only   | <input type="checkbox"/> 65E | <input type="checkbox"/> 90D |
| Ballistic door panels – Driver and front-passenger doors only                              | <input type="checkbox"/> 65C | <input type="checkbox"/> 90E |
| BLIS® (Blind Spot Information System) with cross-traffic alert and heated sideview mirrors | <input type="checkbox"/> 55B | <input type="checkbox"/> 55B |
| Bumper to frame rail bracket kit (required for aftermarket Push Bar installation)          | <input type="checkbox"/> 60B | –                            |
| Climate control – Auxiliary air conditioning   | –                            | <input type="checkbox"/> 17A |
| Dark car feature   | <input type="checkbox"/> 13C | <input type="checkbox"/> 43D |
| Daytime running lamps  | <input type="checkbox"/> 94Z | <input type="checkbox"/> 94Z |
| Dome light – Red/white in cargo area   | –                            | <input type="checkbox"/> 17T |
| Engine block heater  | <input type="checkbox"/> 41H | <input type="checkbox"/> 41H |
| Enhanced Power Transfer Unit (PTU) cooler <sup>2</sup>                                     | –                            | <input type="checkbox"/> 52B |
| Ford SYNC® (Sedan requires Reverse Sensing System)   | <input type="checkbox"/> 53M | <input type="checkbox"/> 53M |
| <b>NEW – Ford Telematics™ powered by Telogis® – Law Enforcement Edition<sup>3</sup></b>    | TBD                          | TBD                          |
| Front console plate delete <sup>1</sup>  | <input type="checkbox"/> 67C | <input type="checkbox"/> 85D |
| <b>NEW – Front warning auxiliary lamps</b>   | –                            | <input type="checkbox"/> 21L |
| <b>NEW – Forward indicator pocket warning lamps</b>  | –                            | <input type="checkbox"/> 21W |
| Glass – Solar-tinted 2nd row, rear quarter and liftgate window                             | –                            | <input type="checkbox"/> 92G |
| Glass – Solar-tinted 2nd row only, privacy glass on rear quarter and liftgate              | –                            | <input type="checkbox"/> 92R |
| Heated sideview mirrors  | <input type="checkbox"/> 549 | <input type="checkbox"/> 549 |
| Hidden door lock plungers (for rear doors)   | <input type="checkbox"/> 63B | <input type="checkbox"/> 52H |
| Hidden door lock plungers and inoperable rear door handles                                 | <input type="checkbox"/> 63P | <input type="checkbox"/> 52P |
| Inoperable rear door handles/inoperable locks  | <input type="checkbox"/> 18G | <input type="checkbox"/> 68G |
| Inoperable rear door handles/operable locks  | <input type="checkbox"/> 18L | <input type="checkbox"/> 68L |
| Keyed alike – 1435x  | <input type="checkbox"/> 43E | <input type="checkbox"/> 59E |
| Keyed alike – 1284x  | <input type="checkbox"/> 43B | <input type="checkbox"/> 59B |
| Keyed alike – 1294x  | <input type="checkbox"/> 43C | <input type="checkbox"/> 59C |
| Keyed alike – 0135x  | <input type="checkbox"/> 43D | <input type="checkbox"/> 59D |
| Keyed alike – 0576x  | <input type="checkbox"/> 43F | <input type="checkbox"/> 59F |
| Keyed alike – 0151x  | <input type="checkbox"/> 43G | <input type="checkbox"/> 59G |
| Keyed alike – 1111x  | <input type="checkbox"/> 43J | <input type="checkbox"/> 59J |
| Lockable gas cap   | <input type="checkbox"/> 98K | <input type="checkbox"/> 19L |
| MySpeed Fleet Management   | <input type="checkbox"/> 20M | <input type="checkbox"/> 43S |

|  | Sedan                        | Utility                      |
|--|------------------------------|------------------------------|
| Noise-suppression bonds  | <input type="checkbox"/> 20P | <input type="checkbox"/> 60R |
| Perimeter anti-theft alarm (requires key fob)                          | <input type="checkbox"/> 59B | <input type="checkbox"/> 593 |
| Pre-wiring for grille lamp, siren and speaker                          | <input type="checkbox"/> 51G | <input type="checkbox"/> 60A |
| Rear console plate <sup>4</sup>  | <input type="checkbox"/> 97D | <input type="checkbox"/> 85R |
| Rear view camera – Image displayed in rearview mirror                  | <input type="checkbox"/> 77B | <input type="checkbox"/> 87R |
| Rear-window power disable (operable from driver's side)                | <input type="checkbox"/> 67D | <input type="checkbox"/> 18W |
| Remappable switches (4)  | <input type="checkbox"/> 47J | <input type="checkbox"/> 61R |
| Remappable switches with SYNC  | <input type="checkbox"/> 47K | <input type="checkbox"/> 61S |
| Remote Keyless Entry System (key fob; not available with keyed-alike)  | <input type="checkbox"/> 60P | <input type="checkbox"/> 595 |
| Reverse Sensing System   | <input type="checkbox"/> 76R | <input type="checkbox"/> 76R |
| Roof-rack side rails – Black   | –                            | <input type="checkbox"/> 68Z |
| Scuff guards   | <input type="checkbox"/> 59E | <input type="checkbox"/> 55D |
| Seat – Rear heavy-duty cloth   | <input type="checkbox"/> 88C | <input type="checkbox"/> 88F |
| Side marker LED lamps – Fender   | <input type="checkbox"/> 96E | –                            |
| Side marker LED lamps – Rear quarter glass                             | –                            | <input type="checkbox"/> 63L |
| Side marker LED lamps – Sideview mirrors                               | –                            | <input type="checkbox"/> 63B |
| Spot lamp, incandescent bulb – Driver and front-passenger <sup>4</sup> | <input type="checkbox"/> 21P | <input type="checkbox"/> 51Z |
| Spot lamp, incandescent bulb – Driver only <sup>4</sup>                | <input type="checkbox"/> 21D | <input type="checkbox"/> 51Y |
| Spot lamp, LED bulb, Unity® – Driver and front-passenger               | <input type="checkbox"/> 21B | <input type="checkbox"/> 51S |
| Spot lamp, LED bulb, Unity – Driver only                               | <input type="checkbox"/> 21L | <input type="checkbox"/> 51R |
| Spot lamp, LED bulb, Whelen® – Driver and front-passenger              | <input type="checkbox"/> 21G | <input type="checkbox"/> 51V |
| Spot lamp, LED bulb, Whelen – Driver only                              | <input type="checkbox"/> 21F | <input type="checkbox"/> 51T |
| Spot lamp prep – Driver and front-passenger                            | <input type="checkbox"/> 21J | <input type="checkbox"/> 51W |
| Spot lamp prep – Driver only   | <input type="checkbox"/> 21H | <input type="checkbox"/> 51P |
| Trunk/cargo area storage vault (includes lockable door)                | <input type="checkbox"/> 19T | <input type="checkbox"/> 63V |
| Trunk circulation fan (wire harness not included)                      | <input type="checkbox"/> 97T | –                            |
| Trunk electronics tray   | <input type="checkbox"/> 62D | –                            |
| Trunk release button (battery-powered)                                 | <input type="checkbox"/> 62B | –                            |
| Underbody deflector plate  | –                            | <input type="checkbox"/> 76D |



**NEW** Front warning auxiliary lamps.



**NEW** Forward indicator pocket warning lamps.

## PACKAGES

Refer to pages 24–29 for full descriptions.

|   | Sedan                        | Utility                      |
|---|------------------------------|------------------------------|
| Cargo Wiring Upfit Package                | –                            | <input type="checkbox"/> 67G |
| Front Headlamp Lighting Solution          | <input type="checkbox"/> 66I | <input type="checkbox"/> 66A |
| Headlamp Housing                          | <input type="checkbox"/> 13P | <input type="checkbox"/> 86P |
| Light Controller Package                  | <input type="checkbox"/> 855 | –                            |
| Police Interior Upgrade Package           | <input type="checkbox"/> 12P | <input type="checkbox"/> 65U |
| Police Wire Harness Connector Kit – Front | <input type="checkbox"/> 77E | <input type="checkbox"/> 47C |
| Police Wire Harness Connector Kit – Rear  | <input type="checkbox"/> 51J | <input type="checkbox"/> 21P |
| Ready-for-the-Road Package                | <input type="checkbox"/> 856 | <input type="checkbox"/> 67H |
| Rear Lighting Solution                    | <input type="checkbox"/> 663 | <input type="checkbox"/> 66C |
| <b>NEW – Taillamp Housing</b>             | –                            | <input type="checkbox"/> 86T |
| Taillamp Lighting Solution                | <input type="checkbox"/> 662 | <input type="checkbox"/> 66B |
| Trunk Upfit Package                       | <input type="checkbox"/> 854 | –                            |
| Ultimate Wiring Package                   | <input type="checkbox"/> 857 | <input type="checkbox"/> 67U |

## VINYL COLOR TREATMENTS & WRAPS

|  | Sedan                        | Utility                      |
|--|------------------------------|------------------------------|
| Two-Tone Vinyl Package #1 (see page 30)  | <input type="checkbox"/> 141 | <input type="checkbox"/> 91A |
| Two-Tone Vinyl Package #2 (see page 30)  | <input type="checkbox"/> 142 | –                            |
| Two-Tone Vinyl Package #3 (see page 30)  | <input type="checkbox"/> 143 | <input type="checkbox"/> 91C |
| Vinyl word wrap – POLICE – on left and right sides of vehicle – non-reflective white | <input type="checkbox"/> 144 | <input type="checkbox"/> 91D |
| Vinyl word wrap – POLICE – on left and right sides of vehicle – reflective black     | <input type="checkbox"/> 145 | <input type="checkbox"/> 91E |
| Vinyl word wrap – POLICE – on left and right sides of vehicle – reflective white     | <input type="checkbox"/> 146 | <input type="checkbox"/> 91F |
| Vinyl word wrap – SHERIFF – non-reflective white                                     | <input type="checkbox"/> 147 | <input type="checkbox"/> 91G |
| Two-tone vinyl front doors   | <input type="checkbox"/> 149 | <input type="checkbox"/> 91J |
| Two-tone vinyl roof  | <input type="checkbox"/> 148 | <input type="checkbox"/> 91H |



**NEW** Remote Keyless Entry System key fob.<sup>5</sup> (Utility only.)

## DIMENSIONS & CAPACITIES<sup>6</sup>

|  | Sedan   | Utility  |
|--|---|--|
| <b>EXTERIOR</b> (in.)                                  |   |  |
| Length   | 202.9   | 197.1  |
| Wheelbase  | 112.9   | 112.6  |
| Width – Mirrors folded                                 | 77.3  | 82.5   |
| Including mirrors                                      | 85.7  | 90.2   |
| Height (excluding options)                             | 61.3  | 69.2   |
| Step-in height   | 16.6  | 18.9   |
| Cargo rear opening height                              | –   | 32.5   |
| Cargo rear opening width at floor                      | –   | 46.6   |
| Liftover height (ground to cargo deck)                 | –   | 31.3   |
| Liftgate to ground                                     | –   | 74.2   |
| Ground clearance                                       | 6.0;<br>5.3 (EcoBoost®)   | 6.5;<br>6.4 (EcoBoost)                         |
| <b>INTERIOR</b> (in.)                                  |   |  |
| <b>Front</b>   |   |  |
| Head room  | 39.0  | 41.4   |
| Shoulder room  | 57.9  | 61.3   |
| Hip room   | 56.3  | 57.3   |
| Leg room   | 41.9  | 40.6   |
| <b>Rear</b>  |   |  |
| Head room  | 36.7  | 40.1   |
| Shoulder room  | 56.9  | 60.9   |
| Hip room   | 55.9  | 56.8   |
| Leg room   | 39.9  | 41.6   |
| <b>CAPACITIES</b>                                      |   |  |
| Passenger volume (cu. ft.)                             | 103.0   | 118.4  |
| Trunk/cargo area volume with full-size spare (cu. ft.) | 16.6  | 85.1 (behind 1st row)<br>48.1 (behind 2nd row) |
| Total interior volume (cu. ft.)                        | 119.6   | 166.5  |
| GVWR (lbs.)  | 5,460-5,700   | 6,342  |
| Max. payload (lbs.)                                    | 1,220 (3.5L EcoBoost)<br>1,280 (3.5 Ti-VCT)<br>1,340 (3.7L AWD) | 1,630;<br>1,580 (EcoBoost)                     |
| Cargo capacity (lbs.)                                  | 400   | 800  |
| Fuel (gal.)  | 19.0  | 18.6   |
| Seating  | 5   | 5  |



# Select Option & Package Highlights

**Confidence in the compatibility and capability of police equipment authorized by Ford.** Components and installations are verified through the comprehensive Ford Quality System – for exacting evaluation in terms of crash testing, cycle testing, vibration testing, hot/cold testing, humidity testing, corrosion testing and the like.

## FREE-STANDING OPTIONS

- A. Trunk electronics tray** – Aluminum, retractable locking tray installed at plant; no height adjustment (Sedan only)
- B. Auxiliary air conditioning** – Offers climate control for the rear cargo area; not available with storage vault (Utility only)
- C. Rear console plate** – Interfaces with front console mounting plate and extends through 2nd-row occupant area to seat bottom; acting as wiring conduit on top of transmission tunnel
- D. Trunk circulation fan** – Wired to ignition to turn on; circulates air from the cabin to the trunk; wiring harness not included (Sedan only)
- E. Trunk/cargo area storage vault** – Lockable; ideal for contraband/small arms; located on driver's side
- F. Hidden door lock plungers** – Manual lock rods; rear door handles inoperable
- G. 100-watt siren/speaker** – Includes wire
- H. Fender side marker LED lamps<sup>1</sup>** – Backlit flashing, linear high-intensity (Sedan only)
- I. Rear quarter-glass side marker LED lamps<sup>1</sup>** – Wide angle, backlit flashing, linear high-intensity (Utility only)
- J. Sideview mirror side marker LED lamps<sup>1</sup>** – Backlit flashing, linear high-intensity (Utility only)
- K. Spot lamp** – High-intensity incandescent or LED (shown) with swivel mount

**Pre-wiring for grille lamp, siren and speaker<sup>2</sup>** – Electrical harness inlay (14290) includes: (2) light connectors that support up to (3) LED lights each (in engine compartment), (1) grille LED light connector that supports (2) LED lights, and (1) front driver's side speaker siren cable (not shown)

## POLICE INTERIOR UPGRADE PACKAGE<sup>3</sup> (Sedan 12P/Utility 65U)

- L. Cloth rear seat** – Heavy-duty fabric with Medium Dark Flint inserts
- M. Center floor console** – 2 cupholders and unique police finish
- Front and rear floor mats** – Carpeted and custom-fit (not shown)
- Front and rear carpeted floor covering** – Premium-grade (not shown)



Sedan (62D)



Utility (17A)



Sedan (97D)/Utility (85R)



Sedan (97T)



Sedan (19T)



Utility (63V)



Sedan (63P)/Utility (52P)



Sedan (96P)/Utility (18X)



Sedan (96E)



Utility (63L)



Utility (63B)



Sedan (21L)/Utility (51R)



Sedan (shown)



Sedan



Utility

## HEADLAMP HOUSING (Sedan 13P/Utility 86P)



Sedan



Utility

**Police front housing:** Eliminates the need to drill or modify housing assemblies; with incremental hole for side marker lights.

## FRONT HEADLAMP LIGHTING SOLUTION (Sedan 661/Utility 66A)



Sedan



Utility

**Police headlamp:** Includes base headlamp with high beam wig-wag function and (2) white LED side warning lights.

## SIDE MARKER LED LAMPS (Sedan 96E/Utility 63L)



Sedan



Utility

**Police side lamps:** Fender side markers on the Sedan and rear quarter-glass side markers on the Utility feature backlit flashing, linear high-intensity LED lamps.

## TAILLAMP LIGHTING SOLUTION (Sedan 662/Utility 66B)



Sedan



Utility

**Police taillamp:** Includes halogen base lamp, plus (2) integrated hemispheric lighthouse LED side warning lights (Sedan with red lens; Utility with white lens).

## REAR LIGHTING SOLUTION (Sedan 663/Utility 66C)



Sedan



Utility

**Police back-window/liftgate-glass lights:** Includes (2) backlit flashing, linear high-intensity LED lights with surround cover (driver's side red; passenger side blue) – Sedan lights are mounted inside of the back window and Utility lights are mounted on the inside of the liftgate glass.



Sedan



Utility

**Police trunk/liftgate lights:** Includes (2) backlit flashing, linear high-intensity LED lights (driver's side red; passenger side blue) – Sedan lights are mounted on the inside of the trunk decklid and Utility lights are installed on the inside lip of the liftgate. (Lights activate when trunk/liftgate is open.)



## TRUNK UPFIT PACKAGE

(Sedan 854)

- A. Trunk electronics tray** – Aluminum, retractable locking tray installed at plant; no height adjustment
- B. Trunk circulation fan** – Wired to ignition to turn on; circulates air from the cabin to the trunk; wiring harness not included
- C. Rear console plate** – Interfaces with front console mounting plate and extends through 2nd-row occupant area to seat bottom; acting as wiring conduit on top of transmission tunnel
- D. Wiring harness** – Includes (2) light connectors – supports up to (3) LED lights each (engine compartment); (1) grille LED light connector – supports (2) LED lights; (2) 50-amp battery ground circuits in power distribution junction block (in-trunk); (1) 10-amp siren/speaker circuit (engine to trunk); trunk circulation fan maintains airflow from cabin to trunk; trunk electronics tray (4 sq. ft.) with 18" of travel when fully extended; and pre-wiring for grille LEDs and siren/speaker

## LIGHT CONTROLLER PACKAGE

(Sedan 855)

- A. Trunk electronics tray** – Aluminum, retractable locking tray installed at plant; no height adjustment
- B. Trunk circulation fan** – Wired to ignition to turn on; circulates air from the cabin to the trunk
- C. Rear console plate** – Interfaces with front console mounting plate and extends through 2nd-row occupant area to seat bottom; acting as wiring conduit on top of transmission tunnel
- D. Wiring harness** – Includes (2) light connectors – supports up to (3) LED lights each (engine compartment); (1) grille LED light connector – supports (2) LED lights; (2) 50-amp battery ground circuits in power distribution junction block (in-trunk); (1) 10-amp siren/speaker circuit (engine to trunk); trunk circulation fan maintains airflow from cabin to trunk; trunk electronics tray (4 sq. ft.) with 18" of travel when fully extended; and pre-wiring for grille LEDs and siren/speaker
- E. Control system** – Includes PCC8R controller, control head, and wire

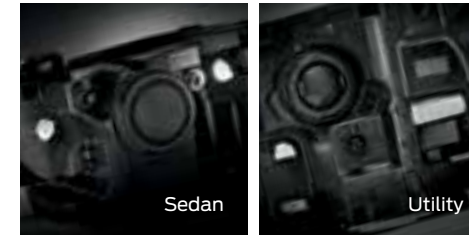
## CARGO WIRING UPFIT PACKAGE

(Utility 67G)

- C. Rear console plate** – Interfaces with front console mounting plate and extends through 2nd-row occupant area to seat bottom; acting as wiring conduit on top of transmission tunnel
- D. Wiring harness** – Includes (2) light connectors – supports up to (6) LED lights (engine compartment); (2) grille light connectors; (2) 50-amp battery ground circuits in right-hand rear quarter power distribution junction block; and (1) 10-amp siren/speaker circuit (engine to cargo area)
- E. Control system** – Includes PCC8R controller, light relay center, control head, cable from controller to control head (console to cargo area), and wire

## READY-FOR-THE-ROAD PACKAGE

(Sedan 856/Utility 67H)



**Police headlamp housing:** Eliminates the need to drill or modify housing assemblies; with incremental hole for side marker lights.



**Police rear lighting:** Includes (2) backlit flashing, linear high-intensity LED lights (driver's side red; passenger side blue) – Sedan lights are mounted on the inside of the trunk decklid and Utility lights are installed on the inside lip of the liftgate. (Lights activate when trunk/liftgate is open.)



**Hidden door lock plunger:** Manual lock rod; rear door handles inoperable.



**Police headlamp:** Includes base headlamp with high beam wig-wag function and (2) white LED side warning lights.



**Trunk storage vault (Sedan only):** Lockable – ideal for contraband/small arms; located in driver's side of trunk.



**100-watt siren/speaker:** Includes wire.



**Grille LED lights:** Includes (2) backlit flashing linear high-intensity LED lights (driver's side red; passenger side blue).



**Trunk electronics tray (Sedan only):** Aluminum, retractable locking tray installed at plant; no height adjustment.



**Control system:** Includes CenCom™ controller, control head, and wire.



**Police taillamp:** Includes halogen base lamp, plus (2) integrated hemispheric lighthouse LED side warning lights (Sedan with red lens; Utility with white lens).



**Trunk circulation fan (Sedan only):** Wired to ignition to turn on; circulates air from the cabin to the trunk.



**Wiring harness (Sedan):** Includes (2) light connectors – supports up to (3) LED lights each (engine compartment); (1) grille LED light connector – supports (2) LED lights; (2) 50-amp battery ground circuits in power distribution junction block (in-trunk); (1) 10-amp siren/speaker circuit (engine to trunk); trunk circulation fan; trunk electronics tray (4 sq. ft.); and pre-wiring for grille LEDs and siren/speaker



**Police rear lighting:** Includes (2) backlit flashing, linear high-intensity LED lights with surround cover (driver's side red; passenger side blue). Sedan lights are mounted on the inside of the back window and Utility lights are mounted on the inside of the liftgate glass.



**Rear console plate:** Interfaces with front console mounting plate and extends through 2nd-row occupant area to seat bottom (acting as wiring conduit on top of transmission tunnel).



**Wiring harness (Utility):** Includes (2) light connectors – supports up to (6) LED lights (engine compartment); (2) grille light connectors; (2) 50-amp battery ground circuits in right-hand rear quarter power distribution junction block; and (1) 10-amp siren/speaker circuit (engine to cargo area)



# Two-Tone Vinyl Color Treatments & Wraps<sup>1</sup>

## TWO-TONE VINYL PACKAGE #1 (Sedan 141/Utility 91A)

Vinyl on front doors, rear doors and roof. (Not available with Two-Tone Vinyl Package #2 or #3, or vinyl word wrap.)



## TWO-TONE VINYL PACKAGE #2 (Sedan 142)

Vinyl on roof, hood and decklid. (Not available with Two-Tone Vinyl Package #1 or #3, or vinyl word wrap.)



## TWO-TONE VINYL PACKAGE #3 (Sedan 143/Utility 91C)

Vinyl on front doors and roof. (Not available with Two-Tone Vinyl Package #1 or #2, or vinyl word wrap.)



## TWO-TONE VINYL ROOF (Sedan 148/Utility 91H)

Vinyl on roof only.



## TWO-TONE VINYL FRONT DOORS (Sedan 149/Utility 91J)

Vinyl on front doors only.



### EXCLUSIVE "POLICE" AND "SHERIFF" VINYL WORD WRAPS

These bold graphics are stop-in-your-tracks arresting. The POLICE wrap comes in your choice of non-reflective white, reflective white or reflective black. And the SHERIFF wrap is offered in non-reflective white only. (Available on both the Sedan and Utility; not available with Two-Tone Vinyl Packages.)



Passenger side – Sedan (144)



Driver's side – Sedan (147)



Passenger side – Utility (91D)

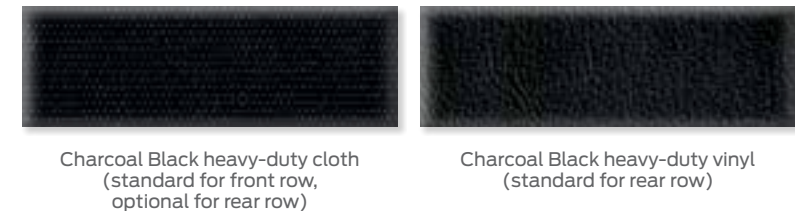


Driver's side – Utility (91G)

## EXTERIOR COLORS



## INTERIOR COLORS/FABRICS



**VSO provides special paint and equipment options that are not currently available through regular – fleet-only – production.** Visit [fleet.ford.com/orders/vehicle-special-order](http://fleet.ford.com/orders/vehicle-special-order) for up-to-date offerings.

**VSO color and equipment availability.** The bright Fire Engine Red VSO paint finish is a popular choice. VSO lighting packages allow you to adhere to state law requirements.

**New option development (VSO inquiries).** Establishing new VSO options is initiated by a customer request called a “VSO inquiry.” Your dealer representative will submit the VSO inquiry. All requests are received, reviewed and approved by the VSO department to ensure the end product is compatible with regular and limited options. The end product must also meet Ford Motor Company standards of quality, durability, safety and performance.

**Production timing.** VSO vehicles with existing VSO options take 60-90 days to go from order receipt to production. For vehicles with newly developed VSO options, please include the development timing provided within the inquiry response. For your fleet planning purposes, VSO production typically begins a month after Job One and balances out a month prior to Job Last.

## VSO EXTERIOR COLOR

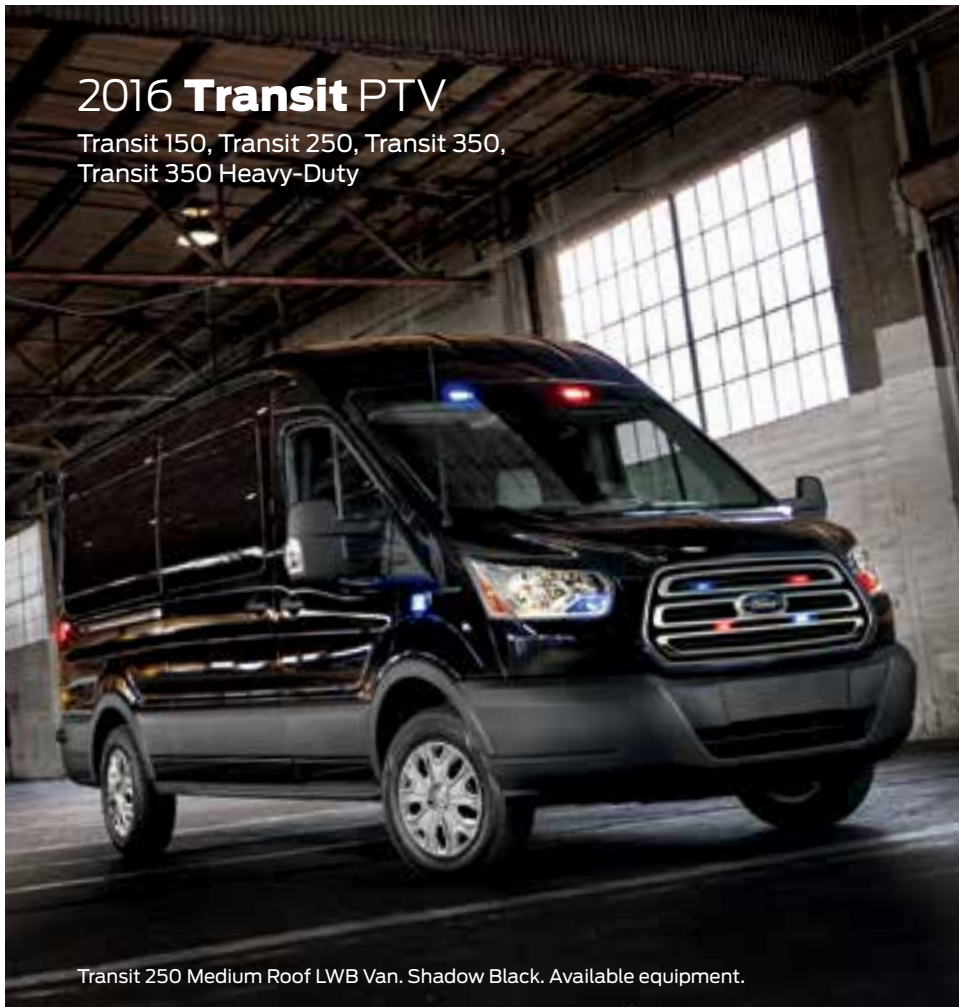


Fire Engine Red

## VSO POLICE LIGHTING OPTIONS

- Grille LED lights – Red/red or blue/blue
- Rear LED lights – Red/red or blue/blue
- Side marker lights (Sedan only) – Red/red or blue/blue
- Sideview mirror lights (Utility only) – Red/red or blue/blue
- Front marker lights – Red/red, blue/blue or red/blue split
- Rear marker lights (Utility only) – Red/red, blue/blue or red/blue split
- Rear quarter lights (Utility only) – Red/red or blue/blue
- Front indicator pocket warning light – Red/red or blue/blue
- Forward warning auxiliary light – Red/red or blue/blue
- Front PTW (park/turn/wig wag) lights – Red/red or blue/blue

<sup>1</sup>To view all current and special paint options, have your dealer access the VSO order guide via [fleet.ford.com](http://fleet.ford.com). The guide is live and options are always up to date. NOTE: Because of occasional variations in printing, consult your Ford Dealer to ensure the true color choice you make is correct. Colors shown are representative only. Colors are metallic except for Oxford White and Shadow Black. See your dealer for actual paint/trim options. Visit [fleet.ford.com](http://fleet.ford.com) for more information on colors and special paint options.



## 2016 Transit PTV

Transit 150, Transit 250, Transit 350,  
Transit 350 Heavy-Duty

Transit 250 Medium Roof LWB Van. Shadow Black. Available equipment.

### PRISONER TRANSPORT VEHICLE (PTV)

- Built Ford Tough® RWD lineup can be compartmentalized and customized with heating/cooling, lighting, surveillance cameras and more<sup>4</sup>
- Unibody construction with choice of 3 roof heights,<sup>2</sup> 3 lengths<sup>2</sup> and 3 powertrains<sup>2</sup> (including EcoBoost® and diesel options)
- CNG/Propane Gaseous Engine Prep Package conversion<sup>1</sup> and flex-fuel capability available for 3.7L Ti-VCT V6
- Maximum payload ratings of up to 4,560 lbs.<sup>2,3</sup>

### STANDARD FEATURES

12-volt powerpoints (2)  
25-gallon fuel tank capacity  
60/40 split side cargo door (Low Roof)  
Air conditioning – Front only (manual)  
Alternator – 150-amp  
Engine – 3.7L Ti-VCT V6  
Full-size spare wheel and tire  
Grab handle on passenger-side A-pillar  
Halogen headlamps  
Mirrors – Short-arm, power sideview

### STANDARD SAFETY & SECURITY

3-point safety belts for all seating positions  
AdvanceTrac® with RSC® (Roll Stability Control™)  
Airbags – Driver and front-passenger front, front-seat side, and Safety Canopy® System with side curtains

### AVAILABLE FEATURES

3 body lengths: Regular, Long and Extended Length  
3 roof heights: Low, Medium and High<sup>5</sup>  
Alternator – Heavy-duty  
Cruise control  
Engine – 3.2L Power Stroke® I-5 Turbo Diesel  
Engine – 3.5L EcoBoost V6  
Engine block heater  
Ford SYNC® 3  
Ford Telematics™ powered by Telogis®<sup>6</sup>  
Integrated trailer brake controller  
Lane-keeping alert with driver alert  
Message center – Level 1  
Mirrors – Long-arm, power sideview  
Mirrors – Long-arm, power, heated sideview with turn signal indicators

### AVAILABLE PACKAGES<sup>7</sup>

Ambulance Prep Package (47B)  
Cargo Area Load Compartment Lighting Package (LED) (85D)  
CNG/Propane Gaseous Engine Prep Package (98C)  
Exterior Upgrade Package (18D)

Power door locks  
Power windows  
Remote Keyless Entry System  
Seating – Front bucket seats with adjustable head restraints (Includes driver's side inboard armrest)  
Sliding passenger-side cargo door (Medium Roof and High Roof)  
Tilt/telescoping steering column  
Transmission – 6-speed SelectShift® automatic  
Windshield wipers – Variable-intermittent

Brakes – 4-wheel disc with Anti-Lock Brake System (ABS)  
Rear view camera  
SOS Post-Crash Alert System™  
Tire Pressure Monitoring System (excludes spare, SRW only)

Mirrors – Short-arm, power, heated sideview with turn signal indicators  
MyKey®  
Privacy glass  
Reverse Sensing System  
SecuriLock® Passive Anti-Theft System  
Trailer wiring provisions  
Upfitter switches (4)  
Wheels – 16" aluminum

### FLEET EXCLUSIVES

Daytime running lamps  
Mirrors – Long-arm, manual sideview  
Mirrors – Short-arm, manual sideview  
Speed limitation – 65-, 70- and 75-mph

Heavy-Duty Trailer Tow Package (53B)  
Interior Upgrade Package (96C)  
Load Area Protection Package (96D)  
Premium Package (96J)

### DIMENSIONS & CAPACITIES<sup>8</sup>

| WHEELBASE (in.)  | 150/250 SRW |             | 150/250/350 SRW |             |           | 250/350 SRW;<br>350 HD DRW |
|--|-------------|-------------|-----------------|-------------|-----------|----------------------------|
|  | Regular 130 |             | Long 148        |             |           | Long 148                   |
|  | Low Roof    | Medium Roof | Low Roof        | Medium Roof | High Roof | High Roof                  |
| Roof height  |             |             |                 |             |           |                            |
| Passenger capacity                                     | 2           | 2           | 2               | 2           | 2         | 2                          |
| Rows of seats  | 1           | 1           | 1               | 1           | 1         | 1                          |
| <b>EXTERIOR (in.)</b>                                  |             |             |                 |             |           |                            |
| Wheelbase  | 129.9       | 129.9       | 147.6           | 147.6       | 147.6     | 147.6                      |
| Length   | 219.9       | 217.8       | 237.6           | 235.5       | 235.5     | 263.9                      |
| Height   | 83.6        | 100.8       | 83.2            | 100.7       | 110.1     | 109.4                      |
| Width – Excluding mirrors                              | 81.3        | 81.3        | 81.3            | 81.3        | 81.3      | 83.7                       |
| Width – Including mirrors                              | 97.4        | 97.4        | 97.4            | 97.4        | 97.4      | 97.4                       |
| Width – Mirrors folded                                 | 83.2        | 83.2        | 83.2            | 83.2        | 83.2      | 83.2                       |
| Front track  | 68.2        | 68.2        | 68.2            | 68.2        | 68.2      | 68.5                       |
| Rear track   | 68.6        | 68.6        | 68.6            | 68.6        | 68.6      | 65.7                       |
| Front overhang   | 40.3        | 40.3        | 40.3            | 40.3        | 40.3      | 40.3                       |
| Rear overhang  | 49.7        | 47.6        | 49.7            | 47.6        | 47.6      | 76.0                       |
| Load height (curb)                                     | 28.9        | 28.9        | 28.7            | 28.7        | 28.7      | 28.0                       |
| Side-door opening height                               | 49.6        | 63.0        | 49.6            | 63.0        | 63.0      | 63.0                       |
| Side-door opening width – 60/40 swing-out              | 51.2        | –           | 51.2            | –           | –         | –                          |
| Side-door opening width – Sliding                      | 51.2        | 51.2        | 51.2            | 51.2        | 51.2      | 51.2                       |
| Rear cargo door opening height                         | 49.5        | 64.9        | 49.5            | 64.9        | 74.3      | 74.3                       |
| Rear cargo door opening width                          | 61.7        | 61.7        | 61.7            | 61.7        | 61.7      | 61.7                       |
| <b>INTERIOR (in.)</b>                                  |             |             |                 |             |           |                            |
| Head room  | 40.8        | 52.0        | 40.8            | 52.0        | 56.6      | 56.6                       |
| Shoulder room  | 67.9        | 67.9        | 67.9            | 67.9        | 67.9      | 67.9                       |
| Hip room   | 67.5        | 67.5        | 67.5            | 67.5        | 67.5      | 67.5                       |
| Leg room (max.)  | 41.3        | 41.3        | 41.3            | 41.3        | 41.3      | 41.3                       |
| Passenger volume (cu. ft.)                             | 63.7        | 81.1        | 63.7            | 81.1        | 88.3      | 88.3                       |
| Cargo length front (at floor)                          | 126.0       | 126.0       | 143.7           | 143.7       | 143.7     | 172.2                      |
| Cargo length front (at belt)                           | 115.9       | 115.9       | 133.6           | 133.6       | 133.6     | 162.0                      |
| Cargo width between wheelhouses                        | 54.8        | 54.8        | 54.8            | 54.8        | 54.8      | 45.4                       |
| Cargo height maximum                                   | 56.9        | 72.0        | 56.9            | 72.0        | 81.5      | 81.5                       |
| <b>CARGO CAPACITY (cu. ft.)</b>                        |             |             |                 |             |           |                            |
| Cargo volume behind 1st row                            | 246.7       | 315.2       | 277.7           | 357.1       | 404.3     | 487.3                      |
| Maximum cargo volume with front-passenger seat removed | 285.0       | 363.8       | 316.1           | 405.6       | 459.2     | 542.2                      |

### ENGINES

| ENGINE                             | Horsepower (hp @ rpm) | Torque (lb.-ft. @ rpm) |
|------------------------------------|-----------------------|------------------------|
| 3.7L Ti-VCT V6                     | 275 @ 6,000           | 260 @ 4,000            |
| 3.5L EcoBoost V6                   | 310 @ 5,500           | 400 @ 2,500            |
| 3.2L Power Stroke I-5 Turbo Diesel | 185 @ 3,000           | 330 @ 1,500–2,500      |

### EXTERIOR COLORS<sup>2</sup>



\*Metallic.

### INTERIOR COLORS<sup>2</sup>



Not rated for pursuit.

<sup>1</sup>Through a Ford Qualified Vehicle Modifier. <sup>2</sup>Available on select series. Restrictions may apply. See your dealer for details. <sup>3</sup>When properly equipped. Cargo, load and trailer tow capacities limited by weight and weight distribution. <sup>4</sup>Aftermarket upfit. <sup>5</sup>High Roof not available on Transit 150. <sup>6</sup>Ford Licensed Accessory. <sup>7</sup>Visit fleet.ford.com for complete package content. See your dealer for details. <sup>8</sup>Dimensions and capacities shown may vary due to optional features and/or production variability. Cargo and load capacity limited by weight and weight distribution. <sup>9</sup>Fleet only.

# 2016 F-150 SSV

Available on XL (Fleet Exclusive)



F-150 XL SuperCrew® 4x4. Shadow Black. SSV Package. Available equipment.

## SPECIAL SERVICE VEHICLE (SSV) PACKAGE (66S)

- Available on XL SuperCab and SuperCrew only
- 5.0L Ti-VCT 4-valve V8 FFV or 3.5L EcoBoost® 4-valve V6 engine (shown right)
- 240-amp alternator
- Cloth 40/blank/40 front seats (SG) with center-seat section deleted (restraint control module cover provided)
- Vinyl rear bench seat
- Column-mounted shifter

## STANDARD FEATURES

- 12-volt powerpoint, front
- 23.0-gallon fuel tank capacity
- Black vinyl floor covering
- Cargo box tie-downs (4)
- Daytime running lamps – Controllable
- Easy Fuel® capless fuel filler
- Electronic shift-on-the-fly (ESOF) (4x4)

## STANDARD SAFETY & SECURITY

- AdvanceTrac® with RSC® (Roll Stability Control™) and Curve Control
- Airbags – Front-seat side and Safety Canopy® System with side-curtain airbags and rollover sensor
- Belt-Minder® front safety belt reminder
- Brakes – Power 4-wheel vented disc with Anti-Lock Brake System (ABS)
- LATCH – Lower Anchors and Tether Anchors for Children

## AVAILABLE PACKAGES<sup>1</sup>

- CNG/Propane Gaseous Engine Prep Package (68G) (requires 5.0L engine)
- FX4 Off-Road Package (55A)
- Heavy-Duty Payload Package (627)
- Trailer Tow Package (53A)
- Max. Trailer Tow Package (53C)
- XL Chrome Appearance Package (86A)
- XL Power Equipment Group (85A)
- XL Sport Appearance Package (861)

- Ford SYNC® (XL 101A)
- Mirrors – Power sideview (XL 101A)
- Power windows and door locks (XL 101A)
- Quick-release tailgate with lock and tailgate assist
- Transmission – 6-speed SelectShift® automatic with progressive range select and tow/haul mode (not available with 3.5L Ti-VCT engine)

- MyKey® (XL 101A)
- Personal Safety System™ for driver and right-front passenger with dual-stage front airbags
- Remote Keyless Entry System (XL 101A)
- SecuriLock® Passive Anti-Theft System
- SOS Post-Crash Alert System™
- Tire Pressure Monitoring System (excludes spare)
- Trailer sway control

## FLEET EXCLUSIVES

- AM/FM stereo/single-CD player with clock and 6 speakers (58B)
- Backup alarm system (85H)
- Cruise control (50S)
- Daytime running lamps – Non-controllable (942)
- Engine block heater (41H)
- Fixed rear window with privacy glass and defroster (924/57Q)
- Full-coverage rubber floor mats (47R)
- Mirrors – Manual-folding, power, heated sideview with integrated turn signal indicators, high-intensity LED security approach lamps, LED spotlights, driver's side auto-dimming feature, and black mirror caps (54R/59S)
- Power-sliding rear window with privacy glass and defrost (924/435/57Q)
- Rear view camera with Dynamic Hitch Assist (XL 100A; requires Power Equipment Group) (76C)
- Skid plates (4x4) (413)
- SYNC (XL 100A) (52B)
- Tires – LT245/70R17E BSW all-terrain (T7C)
- Wheels – 18" Silver heavy-duty aluminum (64H)

## AVAILABLE FEATURES

- BoxLink™ with 4 premium locking cleats
- Class IV trailer hitch
- Fog lamps
- Ford Telematics™ powered by Telogis®<sup>2</sup>
- Integrated trailer brake controller
- Plastic drop-in bedliner

- Rear view camera with dynamic hitch assist
- Reverse Sensing System
- Snow plow prep
- Spray-in bedliner
- Tailgate step includes step, grab bar and tailgate lift assist

## CARGO AREA

| CARGO AREA (in.)         | 5½' Styleside Box | 6½' Styleside Box | 8' Styleside Box |
|--------------------------|-------------------|-------------------|------------------|
| Length at floor          | 67.1              | 78.9              | 97.6             |
| Width at wheelhouse      | 50.6              | 50.6              | 50.6             |
| Maximum width inside box | 65.2              | 65.2              | 65.2             |
| Volume (cu. ft.)         | 52.8              | 62.3              | 77.4             |

## ENGINES

| ENGINE                     | Transmission (with tow/haul mode) | Horsepower (hp @ rpm) | Torque (lb.-ft. @ rpm) |
|----------------------------|-----------------------------------|-----------------------|------------------------|
| 3.5L EcoBoost 4-valve V6   | 6-speed automatic                 | 365 @ 5,000           | 420 @ 2,500            |
| 5.0L Ti-VCT 4-valve V8 FFV | 6-speed automatic                 | 385 @ 5,750           | 387 @ 3,850            |

## DIMENSIONS & CAPACITIES

| DIMENSIONS (in.)            | SuperCab                         |                 | SuperCrew                        |                 |
|-----------------------------|----------------------------------|-----------------|----------------------------------|-----------------|
|                             | 6½' Box                          | 8' Box          | 5½' Box                          | 6½' Box         |
| Wheelbase                   | 145.0                            | 163.7           | 145.0                            | 156.8           |
| Length                      | 231.9                            | 250.5           | 231.9                            | 243.7           |
| Height                      | 75.5/77.2                        | 75.5/77.0       | 75.6/77.2                        | 75.7/77.3       |
| Width (excluding mirrors)   | 79.9                             | 79.9            | 79.9                             | 79.9            |
| CAPACITIES                  | Passenger volume (cu. ft.) Total |                 | Passenger volume (cu. ft.) Total |                 |
|                             | 116.0                            | 116.0           | 131.8                            | 131.8           |
| Fuel (gal.)                 | 23.0                             | 23.0            | 23.0                             | 23.0            |
|                             | (36.0 optional)                  | (36.0 optional) | (36.0 optional)                  | (36.0 optional) |
| Payload <sup>3</sup> (lbs.) | 2,310/2,200                      |                 | 2,150/2,100                      |                 |
|                             | 2,970/2,730                      |                 | 2,910/2,660                      |                 |

Dimensions and capacities shown may vary due to optional features and/or production variability.

## EXTERIOR COLORS<sup>4</sup>



\*Metallic.

## INTERIOR COLORS<sup>4</sup>



## 2016 Expedition/Expedition EL SSV

Available on XL (Fleet Exclusive)



Expedition EL XL. Shadow Black. SSV Package. Available equipment.

### SPECIAL SERVICE VEHICLE (SSV) PACKAGE (102A)

- 17" steel wheels (265/70R17 AT OWL)
- 3.73 limited-slip rear axle
- 4x4 skid plates
- Front tow hooks
- Less running boards
- Black exterior door handles and grille
- Cloth 1st-row/vinyl 2nd-row seating
- 3rd-row seat delete with cover/end cap
- 3rd-row storage bins
- Column shifter
- Floor console delete
- Vinyl floor covering

### STANDARD FEATURES

12-volt powerpoints (3)  
150-amp heavy-duty alternator  
Air conditioning with rear auxiliary controls  
Audio – AM/FM stereo  
Automatic quad-beam reflector headlamps with rainlamp  
Control Trac® 4WD (4x4 models only)  
Cruise control  
Easy Fuel® capless fuel filler  
Electric power-assisted steering (EPAS)  
Engine – 3.5L EcoBoost® V6  
Integrated Class IV Trailer Tow Package

### STANDARD SAFETY & SECURITY

3-point safety belts for all seating positions  
AdvanceTrac® with RSC® (Roll Stability Control™)  
Airbags – Dual-stage front  
Airbags – Front-seat side  
Airbags – Safety Canopy® System with side-curtain airbags and rollover sensor  
Anti-theft perimeter alarm  
Belt-Minder® front safety belt reminder  
Brakes – 4-wheel disc with Anti-Lock Brake System (ABS)  
Child-safety rear door locks

### AVAILABLE FEATURES

**FLEET EXCLUSIVES**  
Daytime running lamps (43D)  
Engine block heater (41H)  
Fleet Convenience Package (50F)  
Ford SYNC® (52M)  
Running boards (186)

Mirror – Auto-dimming rearview  
Mirrors – Black, power, heated sideview with integrated blind spot mirrors and security approach lamps  
MyKey®  
Power windows and door locks with one-touch-up/-down driver's side window feature  
Rear-wheel drive (RWD)  
Seats – 1st-row buckets with recline and 6-way power driver's with manual lumbar support; 2nd-row 40/20/40 split (CenterSlide®) with recline  
Tilt/telescoping steering column  
Transmission – 6-speed SelectShift® automatic

LATCH – Lower Anchors and Tether Anchors for Children  
Rear view camera  
Remote Keyless Entry System  
SecuriCode™ keyless entry keypad  
SecuriLock® Passive Anti-Theft System  
SOS Post-Crash Alert System™  
Tire Pressure Monitoring System (excludes spare)  
Traction control  
Trailer sway control

Seat – 2nd-row 40/20/40 split bench (cloth) (21F)  
Seat – 3rd-row 60/40 split manual bench (vinyl) (875)  
SSV Upgrade Package (65C)

### AVAILABLE PACKAGE<sup>1,2</sup>

Heavy-Duty Trailer Tow Package (536)

### DIMENSIONS & CAPACITIES<sup>3</sup>

| DIMENSIONS (in.)                  | Expedition                | Expedition EL             |
|-----------------------------------|---------------------------|---------------------------|
| Length                            | 206.0                     | 220.8                     |
| Wheelbase                         | 119.0                     | 131.0                     |
| Width – Excluding mirrors         | 78.8                      | 78.8                      |
| Including mirrors                 | 91.8                      | 91.8                      |
| Mirrors folded                    | 79.7                      | 79.7                      |
| Height                            | 77.2                      | 77.7 (4x2);<br>78.3 (4x4) |
| Minimum running ground clearance  | 8.3 (4x2);<br>8.0 (4x4)   | 8.3 (4x2);<br>8.0 (4x4)   |
| Liftover height                   | 34.1 (4x2);<br>34.0 (4x4) | 34.1                      |
| Cargo rear opening height         | 34.6                      | 34.1                      |
| Cargo rear opening width at floor | 56.7                      | 56.7                      |

| CAPACITIES (cu. ft.)          | Expedition | Expedition EL |
|-------------------------------|------------|---------------|
| Cargo volume – Behind 1st row | 108.3      | 130.8         |
| Behind 2nd row                | 55.0       | 85.5          |
| Behind 3rd row (if equipped)  | 18.6       | 42.6          |
| Fuel (gal.)                   | 28.0       | 33.5          |
| Seating                       | 5, 8       | 5, 8          |

### ENGINE

|                        | 3.5L EcoBoost V6         |
|------------------------|--------------------------|
| Horsepower (hp @ rpm)  | 365 @ 5,000 <sup>4</sup> |
| Torque (lb.-ft. @ rpm) | 420 @ 2,250 <sup>4</sup> |

### TRAILER WEIGHT RATINGS<sup>5</sup>

| Hitch Class  | Maximum Load (lbs.) |               |
|--------------|---------------------|---------------|
|              | Expedition          | Expedition EL |
| 4x2 Class IV | 9,200               | 9,200         |
| 4x4 Class IV | 9,200               | 9,100         |

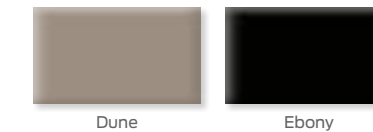
Maximum weights shown are for properly equipped vehicles with required equipment and a 150-lb. driver. Weight of additional options, equipment, passengers and cargo must be deducted from this weight. For additional information, see your dealer. Cargo and load capacity limited by weight and weight distribution.

### EXTERIOR COLORS<sup>1</sup>



\*Metallic.

### INTERIOR COLORS<sup>1</sup>



## More Choices

**Full family of vehicles to meet your diversified needs.** Ford Fleet offers you a balanced, high-quality portfolio: Fiesta, Focus, Focus Electric, C-MAX Hybrid, C-MAX Energi, Mustang, Fusion, Fusion Hybrid, Fusion Energi, Taurus, Escape, Edge, Explorer, Flex and Transit Connect. Visit [fleet.ford.com](http://fleet.ford.com) for details.



Fusion Hybrid Titanium. Ingot Silver. Available equipment.



Escape Titanium. Sunset. Available equipment.



Transit Connect XLT Van. Dark Blue. Available equipment.

## HOW MANY UNITS WILL YOU BE ABLE TO ADD TO YOUR FLEET THIS YEAR?

The Ford Credit Municipal Lease Purchase Finance Program is a flexible funding plan available to state and local governments that will let you acquire the units you need when you need them.



### BENEFITS

- Maximize limited budget funds – typically, you can get the benefit of cost-efficient tax-exempt financing
- Avoid the high cost and downtime of maintaining older high-mileage vehicles
- Add units to your fleet with current technology
- Finance add-on equipment, upfits and extended warranty plans
- No down payment or security deposit required
- Accumulate equity with each payment, and realize ownership at lease-end
- Flexible payment schedules, including monthly, quarterly or annual payments, can be arranged to meet your needs

**Best of all – Ford Credit Municipal Finance Specialists will assist you in handling the transaction from start to finish.**

### LEARN MORE

Ford Motor Credit Company LLC is not acting as a municipal advisor or financial advisor, and has no fiduciary duty to you pursuant to Section 15B of the Securities Exchange Act of 1934. The information contained in this brochure is not intended to be and should not be construed as “advice” within the meaning of Section 15B of the Securities Exchange Act of 1934 and the municipal advisor rules of the SEC.

Contact your Ford Credit Municipal Lease Specialist at 1-800-241-4199 or visit:

- [www.credit.ford.com/municipal-finance](http://www.credit.ford.com/municipal-finance)
- [www.credit.ford.com/doc/Giveyourbudgetaboost](http://www.credit.ford.com/doc/Giveyourbudgetaboost)
- [www.credit.ford.com/doc/Increase\\_the\\_Fleet.pdf](http://www.credit.ford.com/doc/Increase_the_Fleet.pdf)

### OPTION A: Purchase today in cash<sup>1</sup>



### OPTION B: Purchase with the Ford Credit Municipal Lease/Purchase Finance Program.



**NOTE:** Vehicles shown for illustrative purposes only.

## FORD PROTECT IS AVAILABLE FOR ALL FORD SPECIAL SERVICE VEHICLES

Upgrade your protection: Select the extended warranty that best suits your needs. There are 4 plans available that wrap around or extend the powertrain warranty – PowertrainCare, BaseCare, ExtraCare, PremiumCare – with comprehensive coverage for up to 8 years and 150,000 miles on new vehicles. In addition, drop-off first-day rental is included on all plans.

## GENUINE FORD COLLISION REPLACEMENT PARTS

Dependability is crucial. To do your job, you depend on every piece of your equipment to function as it was designed. The same goes for your police unit, and if you're ever in an accident, you can depend on genuine Ford collision replacement parts: sheet metal, bumpers and lights to help restore your vehicle to pre-accident condition. Genuine Ford collision parts are equal in quality, fit and structural integrity to the original parts that came on your vehicle because they are the same parts used in the production of new vehicles. Designed, engineered, and produced by Ford Motor Company to meet Federal Motor Vehicle Safety Standards. Cheap imitation parts can't make that claim. So don't settle for anything less dependable than genuine Ford collision replacement parts.

## QUALITY FLEET CARE (QFC)

Quality Fleet Care is a centralized billing service you can use to make a single monthly payment on behalf of your entire fleet for maintenance and repairs performed at participating Ford Dealers and Quick Lane Tire & Auto Centers. Over-the-counter parts purchases at participating Ford Dealers can also be included. There is no enrollment fee, no per-vehicle fee and no administration fee for warranty-covered repairs. Plus, you preset your drivers' spending limits, which cannot be exceeded without your approval. Visit [qfc.ford.com](http://qfc.ford.com) or call 1-800-367-3221 for more information.

# Elite Police Advisory Board

**An industry first.** Acting as a liaison and resource for law-enforcement agencies nationwide, the Police Advisory Board (PAB) provides frank and direct feedback on the products, programs and policies of Ford. These standout officials help refine current vehicles and create future offerings. Input on safety, reliability and durability is essential to serving unique operational needs, and proves invaluable to the ongoing development of Ford Police Interceptors and Special Service Vehicles. Please visit [fleet.ford.com](http://fleet.ford.com) for more PAB specifics.



**RICK AMELOOT**  
Ontario Provincial Police  
rick.ameloot@opp.ca  
705.826.6933



**ANDRE BONIECKI**  
Royal Canadian Mounted Police  
andre.boniecki@rcmp-grc.gc.ca  
613.843.3771



**KARL BRENNER**  
Massachusetts State Police  
karl.brenner@state.ma.us  
508.820.2270



**LARRY CAMPBELL**  
City of Fort Wayne  
larry.campbell@cityoffortwayne.org  
260.427.5291



**JOHN CROOP**  
Kent State University  
jcroop@kent.edu  
330.672.0818



**DAVID DO**  
Los Angeles County Sheriff's Department  
dcdo@lasd.org  
323.881.3982



**JERRY DOUGHERTY**  
Pennsylvania State Police  
gerdougher@pa.gov  
717.705.5928



**SCOTT EARL**  
Unified Police of Greater Salt Lake  
searl@updsl.org  
801.599.4240



**JASON GRIFFIN**  
Texas Department of Public Safety  
jason.griffin@dps.texas.gov  
254.793.2267



**RANDY HAHN**  
Alaska State Troopers  
randal.hahn@alaska.gov  
907.269.5648



**DAVID (DOC) HALLIDAY (RET.)**  
Michigan State Police  
dhalliday430@gmail.com  
517.256.3689



**JASON HUSBY**  
South Dakota Highway Patrol  
jason.husby@state.sd.us  
605.773.5481



**PAUL KOCH**  
City of Cape Coral  
paulkoch@nc.rr.com  
239.574.0703



**MIKE MCCARTHY**  
Michigan State Police  
mccarthym4@michigan.gov  
517.322.1787



**STEVE MILLS**  
California Highway Patrol  
stmills@chp.ca.gov  
916.376.3535



**DAVE MOTOLA**  
City of Miami Gardens  
dmotola@miamigardens-fl.gov  
954.816.2491



**WAYNE NERO**  
Georgetown Police Department  
wayne.nero@georgetown.org  
512.930.8450



**KEVIN RAUSIS**  
San Diego Police Department  
krausis@pd.sandiego.gov  
619.871.7989



**TODD REVELL**  
Springfield Missouri Police Department  
trevell@springfieldmo.gov  
417.864.1742



**ED SANOW**  
Law and Order Magazine  
esanow@hendongpub.com  
765.491.1327



**JIM TUROW**  
Guelph Police  
jturow@guelphpolice.ca  
519.824.1212 x7258



**LOGAN WERNET**  
Mason City Police  
lwernet@masoncity.net  
641.494.3565



**SEAN WILLIAMS**  
Collier County Sheriff's Office  
sean.williams@colliersheriff.org  
239.253.5361



**KENNETH WYATT**  
Prince George's County, MD  
klwyatt@co.pg.md.us  
301.808.1722



**VARTAN YEGHIYAN**  
Los Angeles Police Department  
vartan.yeghyan@lapd.lacity.org  
213.486.7060