

CADILLAC
SEVILLE



1984



SEVILLE

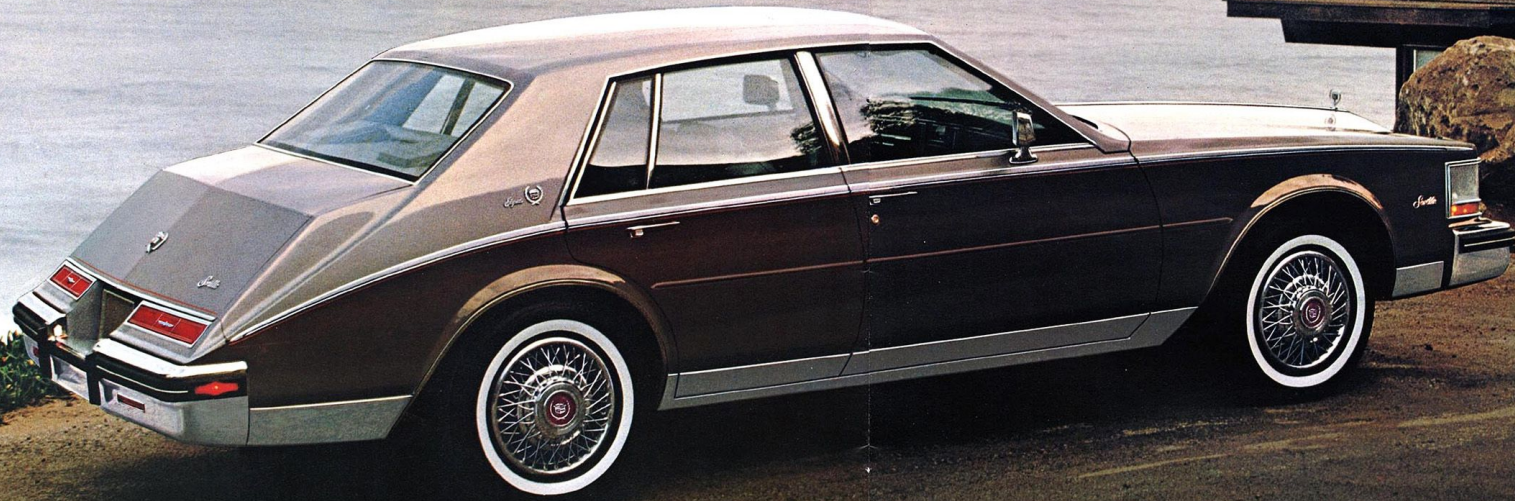
A car for those
who choose to go
first class all the way.
Cadillac's finest.
Elegant. Distinctive.
Superbly crafted.
Seville for 1984.
Best of all... it's a Cadillac.

A WORD ABOUT THIS CATALOG:
We have tried to make this catalog as
comprehensive and factual as possible and
we hope you find it helpful. However, since
the time of printing, some of the information
you will find here may have been updated.
Also, some of the equipment shown or
described throughout this catalog is available
at extra cost. Your dealer has details and,
before ordering, you should ask him to bring
you up to date.
The right is reserved to make changes at any
time, without notice, in prices, colors, mate-
rials, equipment, specifications and models.
Check with your Cadillac dealer for complete
information.



SEVILLE

This is unquestionably one of the world's great cars. An American standard for the world. A standard for styling—imitated but never matched. Made with extraordinary attention to detail—like the two treatments with finely graded polish each Seville receives before delivery, Seville stands as a unique tribute to American technology and Cadillac leadership. Seville shown here in Georgian Silver.



SEVILLE ELEGANTE

It's a uniquely elegant edition of Cadillac's finest. In 1984, there's your choice of distinctive two-tone color treatments or new single color treatments. Each combines with chrome plated side moldings to define the sweeping French curve design. Script insignia signs the "Elegante" name to side panels. Wire wheel discs further distinguish this very special, very elegant model. Shown in Woodland Haze (upper) and Briar Brown (lower), one of four special two-tone combinations.



SEVILLE INTERIOR

Undeniable beauty. Undeniable comfort. Your first glance, your first touch will confirm it. This is first class. From the classic spaciousness to the contemporary color and texture. In 1984 there's a new tufted multi-buttoned seat trim design. It's shown here in the standard Heather knit cloth in Dark Blue, one of four colors offered. Or you may choose the available leather seating areas in any of ten colors.



SEVILLE ELEGANTE INTERIOR

Choice of the Choice. First class with extra flair. Standard are special tufted leather seating areas, complementary leather-trimmed steering wheel and leather-topped front compartment console. Color-coordinated to match exterior colors, Sierra Grain leather is offered in Dark Blue, Black, Dark Maroon and Dark Briar Brown, shown. Other very elegant touches include Tampico carpeting and floor mats. Plus 40/40 Dual Comfort Front Seats (Two Passenger), Six-Way Power Passenger Seat Adjuster and Recliner Power-Passenger Seat.



Seville's Instrument Panel with elegant new Black Accent Interior Trim Moldings. (Available features also shown.)



Standard Seville Wheel Disc.



Standard Seville Elegante Wire Wheel Disc.

STANDARD FEATURES

COMFORT AND CONVENIENCE

Armrest, Center-Front and Rear
 Armrests, Doors-Front and Rear
 Ash Receivers-Two Front, One on Each Rear
 Door Armrest
 Assist Handles-Front Seatback
 Assist Handles-Three Overhead
 Audible Reminders-For Headlights on, Key in Ignition, Seat Belts
 Cigarette Lighters-Two Front and Two Rear
 Clock, Digital Display (in radio)
 Controlled Cycle Wipers-With Fluidic Windshield Washer System

Defogger, Front Side Windows
 Door Locks, Electrically Powered
 Door Pull Straps
 Electronic Climate Control-With Outside Temperature Digital Display
 Fuel Data Panel-Includes Digital Display of instantaneous and average fuel economy, estimated driving range and fuel used. With HT 4100 engine only.
 Gold Key Delivery System-See Page 16
 Headlamp Dimmer Switch, Column-Mounted
 Headrests, Front Seats-Adjustable
 Lamp Monitors-Front and Rear. Indicate whether major and secondary outside lights are functioning.

Lights, Exterior-Including Front Cornering Lights and Tungsten Halogen High Beam Headlamps
 Lights, Interior-Underhood, Glove Compartment
 Front Ash Receivers, Instrument Panel Courtesy Sunshade Support, Door Courtesy and Warning, Rear Reading (adjustable), Luggage Compartment
 Litter Receptacle-Carpeted
 Low Fuel Indicator
 Mirrors, Right and Left Outside Rearview Remote Controlled-Right Convex
 Pockets, Front Seatback
 Recliner, Manual-Front Passenger Seat
 Seat Adjuster-Two-Way Manual (Passenger Seat)
 Seat Adjuster-Six-Way Power (Driver Seat)
 Seats, Front-Dual Comfort 45/50 (Three Passenger)
 Soft Ray Tinted Glass

Trip Odometer-Push-to-Reset
 Trunk Lid Release and Pull-down-Power
 Visor Vanity Mirror-Passenger
 Visors, Padded Dual Sun
 Windows, Electrically Powered
 Windshield Washer Fluid Low Level Indicator

SOUND SYSTEM

Antenna, Power
 Radio, New 2000 Series AM/FM Stereo Signal Seeking with Scanner and Digital Display (ETR). High performance front speakers and extended frequency range rear speakers. Plus crystal controlled frequency synthesizer for drift-free reception. (See page 15.)

APPEARANCE AND PROTECTION

Accent Molding
 Accent Striping-Side and Deck Lid
 Bumper Guards-Front and Rear

Bumper Rub Strip-Front and Rear
 Door Sill Plates
 Floor Carpet
 License Frame, Rear
 Luggage Compartment-Carpeted
 Moldings-Including Body Side (Car Color)
 Rocker Panel (Wide), Wheel Opening
 Roof, Metal, Painted
 Wheel Discs
 Weather and Crest Ornamentation-Including Hood, Deck Lid, Wheel Discs, Steering Wheel

ENGINE/CHASSIS

Battery-Delco-GM Freedom® II
 Brakes, Power-Four-Wheel Disc
 Electronic Level Control-Automatically adjusts to changing loads to help keep car level
 Engine, Exclusive Cadillac HT 4100 Digital Fuel Injection Power System (4.1 Liters)-

Combines DFI and Automatic Overdrive with a Smooth V8 Engine. Includes On-Board Computer Diagnostics
 Front-Wheel Drive
 Generator, 80 Amp
 High Energy Ignition
 Independent Four-Wheel Suspension
 Parking Brake Release, Automatic
 Spare Tire, Compact High-Pressure Type
 Spare Tire Cover
 Steering, Power
 Tires, Steel-Belted Radial, Wide Whitewall
 Transmission, Automatic-4-Speed (Includes Overdrive and Torque Converter Clutch)
 Wheel Balance, Dynamic
 Wheels and Tires-Computer Match-Mounted

ADDITIONAL STANDARD FEATURES ON THE SEVILLE ELEGANTE

COMFORT AND CONVENIENCE

Console, Front Compartment
 Recliner, Power-Front Passenger Seat
 Seat Adjuster-Six-Way Power (Front Passenger Seat)
 Seats, Front-Dual Comfort 40/40 (Two Passenger)

APPEARANCE AND PROTECTION

Elegante Identification
 Floor Carpet-Deluxe Tampico Carpeted
 Floor Mats-Deluxe Tampico Carpeted Rubber
 Front and Rear
 Leather Seating Areas-Exclusive Elegante Seat Trim Design
 Paint, Two-Tone-Specific Elegante Two-Tone Combinations (Single colors also offered)
 Steering Wheel Rim, Leather-Trimmed
 Wheel Discs, Wire



FEATURES AVAILABLE



12 Illuminated Visor Vanity Mirror. For Passenger and Driver.



Seville Aluminum Alloy Wheel.



Seville Wire Wheel Cover.

COMFORT AND CONVENIENCE

AstrorooF—Electrically powered. With Adjustable Sunscreen (Reduces head-room slightly).

Cruise Control.
Defogger, Rear Window—Includes Heated Outside Rearview Mirrors.
Door Locks, Automatic.
Garage Door Opener.
Headlamp Control, Guidematic.
Illuminated Entry System.
Memory Seat.
Mirrors, Electric Power Outside Rearview (Chrome).
Recliner, Power—Driver Seat.

Recliner, Power—Front Passenger Seat. (Standard on Seville Elegante).
Seat Adjuster—6-Way Power-Front Passenger—Dual Comfort Seat (Standard on Seville Elegante).
Steering Wheel, Tilt and Telescope.
Twilight Sentinel.
Visor Vanity Mirrors, Illuminated—Driver and Passenger.

SOUND SYSTEMS

See page 15 for details.

APPEARANCE AND PROTECTION

Door Edge Guards.

Floor Mats—Carpeted Rubber, Front and/or Rear. (Deluxe Tampico Carpeted Mats Standard on Seville Elegante).
Front License Plate Mounting Provisions—(No charge).
Fuel Filler Door, Remote Locking.
General Motors Continuous Protection Plan.
Additional service protection beyond that provided by GM's limited new vehicle warranty. U.S. and Canada only. See your Cadillac dealer for details.

Instrument Cluster Digital.
Leather Seating Areas—(Standard on Seville Elegante).
Paint, Firemist.

Paint, Two-Tone—(Standard on Seville Elegante).
Roof, Full Cabriolet—(Not available on Seville Elegante).
Steering Wheel Rim, Leather-Trimmed—(Standard on Seville Elegante).
Theft-Deterrent System.
Trunk Mat.
Wheel Discs, Wire (Standard on Seville Elegante).
Wheels, Aluminum Alloy.

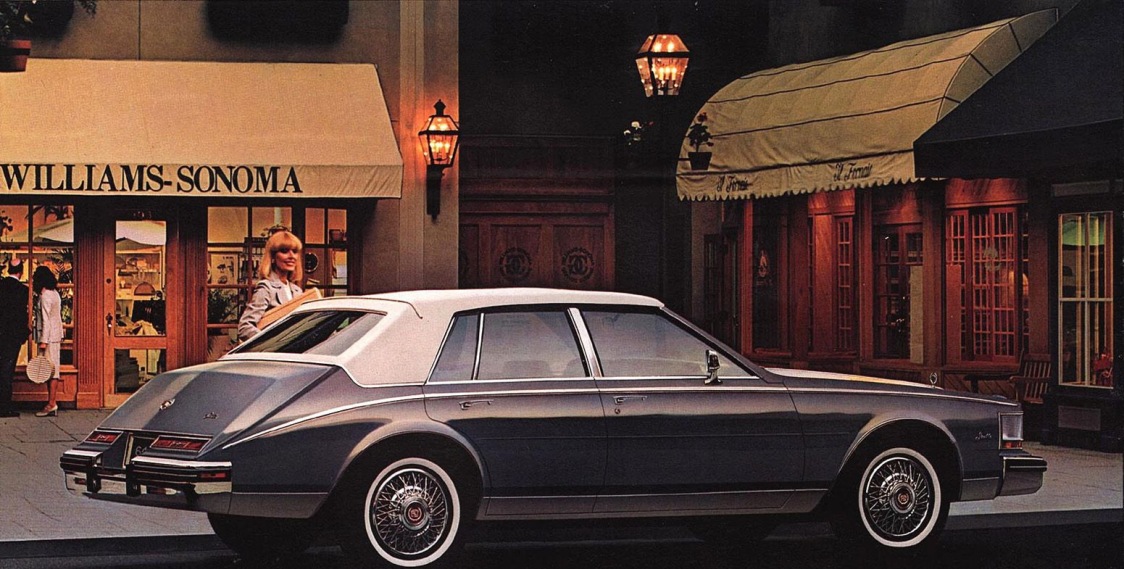
ENGINE/CHASSIS

Battery, Heavy-Duty—Delco-GM Freedom® III (Not available on Diesel).

Emission System, Altitude—(No charge).
Emission System, California—(Not available on Diesel).
Emission System, Federal—(No charge).
Engine, Diesel—5.7 Liter V8 (No charge). (Not available in California).
Engine Block Heater (Standard with Diesel Engine).

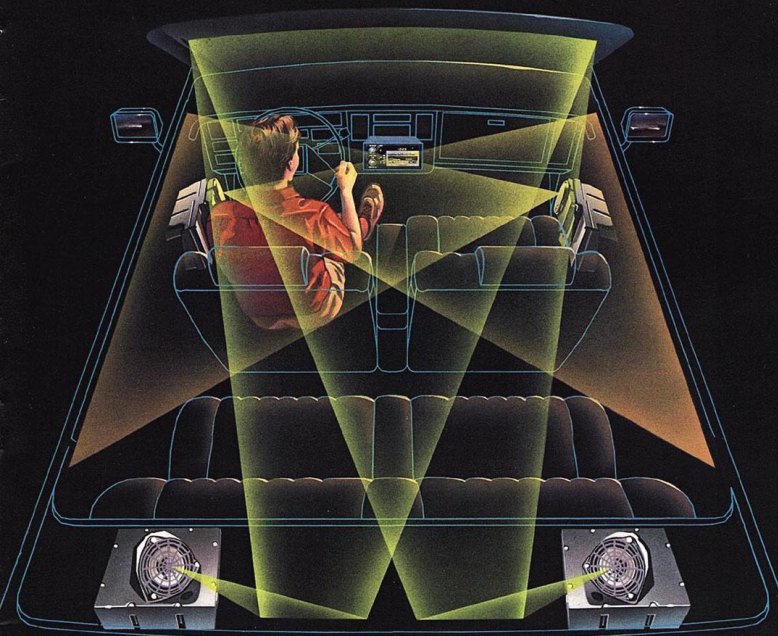
Generator, 100 Amp.
Tires, Puncture Sealing—(Not available with Touring Suspension).
Touring Suspension—Includes Large P225/70R15 Tires*.

*CAUTION: For Use with Tire Chains. See Owner's Manual.



SEVILLE WITH FULL CABRIOLET ROOF

Cadillac's finest with a very personal style. An added look of distinction. It's Seville with a Full Cabriolet Roof treatment. This simulated convertible roof design is available in four colors: Black, Dark Blue, Dark Briar Brown and White. Shown with Hatteras Blue Exterior.



SOUND SYSTEMS

Shown:
DELCO-GM/BOSE SYMPHONY SOUND SYSTEM. [Available.]

Our ultimate car stereo. This available system is customized to the exact dimensions and acoustical characteristics of the car. Combines one of Delco-GM's most sophisticated ETR's with Bose's patented Direct/Reflected sound reproduction design. Four separate amplifiers and speakers, each in its own unit, distribute sound waves in a carefully calculated pattern. Eliminates the need for a balance control. The Delco-GM/Bose sound design includes: Integral Cassette Player • Dynamic Noise Reduction™ (DNR) • Dolby Tape Noise Reduction™ • Tape Equalization Switch • Automatic Reception Adjustment • Full-Time Loudness Control (Bass Boost) • Treble and Bass Reduction Controls • Digital Display of Frequency and Time • Signal Seeking And Scanning • Auto Reverse • Helical Voice Coil Speakers • Patented "Digital Mode" Amplifiers • Dynamic Distortion Limiting • "Search and Replay" Cassette Feature • Lighted Tape Side Indicators.

NEW DELCO-GM 2000 SERIES ELECTRONICALLY TUNED AM/FM STEREO RADIO. [Standard.]

Features Electronic Tuning, Digital Display of Frequency and Time • Electronic Signal Seek and Scan • Bass and Treble Side Controls, Balance and Fader Controls • High Performance Front Speakers • Extended Frequency Range Rear Speakers • Standard Power Antenna.

NEW DELCO-GM 2000 SERIES ETR WITH CASSETTE. [Available.]

Same as standard radio described above with additions of: 5-band Graphic Equalizer which replaces treble and bass slide controls • Separate Power Switch • Loudness Control (Bass Boost) • Dynamic Noise Reduction™ (DNR) Control • Automatic Reverse Cassette Tape Player • Lighted Tape Direction Indicators • Tape Equalization Switch • Locking Fast Forward and Reverse Buttons.

NEW UNIVERSAL CITIZENS BAND TRANSCEIVER. [Available.]

To be used with Base AM/FM Receiver or Available 2000 Series Cassette. Includes: 40-Channel CB Transceiver • Microphone • Tri-Band Antenna • CB Controls or Microphone [Separate CB Volume • Mode-Off/On-Monitor • Squelch Control • Tuning Knob • CB Channel Display] • CB Audio Output through Front Speakers Only.

ANTENNA, TRI-BAND
 [Standard with CB Transceiver.]

THE CADILLAC LEGACY OF QUALITY. (And what it can mean to the Seville owner.)

THE FACTS SPEAK FOR THEMSELVES.

Seville follows in the Cadillac tradition of quality rooted in pride. And confirmed by 35 consecutive years in which more Americans have chosen to own Cadillac than any other luxury car.

As you'd expect with Seville, some extraordinary measures are taken before delivery. Your new Seville undergoes two treatments with a finely graded polish. The entire interior and exterior are specially cleaned and all systems and functions are double-checked. Then and only then will it pass inspection. A personally signed notice of acceptability will be placed in the right hand corner of the instrument panel. This vehicle is indeed first class...all the way.

ANTI-CORROSION PROTECTION IN OVER 100 AREAS.

The 1984 Seville is well protected against corrosion. Over 100 areas are specially treated with extensive anti-corrosion measures that incorporate advanced rust-fighting technology. An example is the electron-charged dip in which Seville bodies are immersed to bond paint and metal with a magnetic-like adhesion. Even bumpers are triple-plated with copper, nickel and chrome for extra protection.

ADVANCED TECHNOLOGY.

It will quickly be evident that your new Seville is a fine example of what innovation should mean. At Cadillac, we believe that "new" isn't enough. It's how an innovation will benefit you that's important. That's the criterion that has resulted in such advances as the HT 4100 DFI V8 Power System. The HT 4100 gives you the power of a V8 plus the smoothness and

starting ease of Digital Fuel Injection for consistent performance and response across a wide range of driving conditions. Another example: The Fuel Data Panel—designed to help you monitor your driving efficiency and get the most out of every gallon. It's standard with the HT 4100 engine.

THOSE "LITTLE THINGS."

The attention to detail is apparent throughout Seville. Everywhere you look you are aware of those thoughtful touches, such as an electronic climate control system that lets you adjust the temperature setting to a single degree. Or those reminder chimes—"friendly persuasion"—to help you remember to buckle up, turn off the lights or take the key.

CADILLAC'S GOLD KEY DELIVERY SYSTEM.

As the name implies, Cadillac has inaugurated the most comprehensive delivery program in our 82-year history. It includes a thorough inspection of your vehicle, an orientation drive with your sales consultant, a tape cassette with a thorough explanation of your Seville and a full tank of fuel. Plus two sets of Gold Keys and your own Gold Key Identification Card. But that's not all. You'll also receive a 1,000 mile inspection—at no charge.

CADILLAC'S COMPLETE CUSTOMER SATISFACTION SYSTEM.

We have also begun a new step-by-step service excellence system with complete customer satisfaction as our goal. And we're now certifying participating Cadillac dealers nationwide for this system which we believe will set a new service standard for the world.

1984 SEVILLE SAFETY FEATURES

OCCUPANT PROTECTION

Manual lap/shoulder belts with push-button buckles for driver and right front passenger (driver side includes visual and audible warning system). Manual lap belt at center position, when applicable.

Manual lap belts with push-button buckles at rear passenger positions including center.

Energy-absorbing steering column. Passenger-guard inside door lock handles. Safety interlocking door latches.

Energy-absorbing instrument panel and front seatback tops.

Laminated safety glass windshield/tempered safety glass side and rear windows.

Safety armrests. Front seat head restraint for driver and right front passenger (adjustable).

Glove box door latch and, when applicable, console cover latch impact security. Smooth contoured door and window

regulator handles. Pressure lock radiator cap.

ACCIDENT AVOIDANCE

Side marker lights and reflectors. Parking lamps that illuminate with headlamps.

Four-way hazard warning flasher. Backup lights. Lane change feature in direction signal control.

Windshield defrosters, washer and controlled-cycle wiper system. Vinyl-bonded inside rearview mirror glass. Outside left and right rearview mirrors.

Dual master cylinder brake system with warning light.

Starter safety switch. Dual-action safety hood latch.

Low glare finish on instrument panel top, inside windshield moldings, wiper arms and blades, and steering wheel metallic surfaces.

Safety road wheel rims.

Front and rear disc brakes with audible wear indicators.

Self-adjusting brakes.

Illumination of heater and defroster controls on instrument panel.

Illumination of windshield wiper and washer controls.

Pressure relief fuel cap. Tread-wear indicators on tires.

ANTI-THEFT

Audible anti-theft ignition key reminder. Anti-theft steering column lock.

Inside hood release.

Anti-theft key system (one key for ignition only, second key for doors, trunk and glove compartment).

Visible vehicle identification number.

AVAILABLE ANTI-THEFT FEATURE

Theft-Deterrent System.

Let's Get It Together...Buckle Up.



SPECIFICATIONS

SEVILLE

Engines

HT 4100 V8 with DFI Standard
Displacement 4.1 liters
Diesel with Fuel Injection No-charge option
(Not available in California)

Displacement 5.7 liters

Fuel Tank

Capacities
With HT 4100 Power System 76.8 liters
(20.3 gallons approx.)
With Diesel 86.3 liters
(22.8 gallons approx.)

Electrical

Freedom® II Battery—
Delco 12-volt, negative ground,
side terminals. No filter vent caps.
With Diesel: Two Delco-GM
Freedom® II Batteries.

Generator

..... 80 amp
standard engine

Transmission

..... Four-speed
automatic with overdrive and
torque converter clutch

Final Drive Ratios

With HT 4100 Power System 3.15:1 (3.36:1 Altitude)
With available Diesel 2.93:1

Front Suspension

..... Independent Torsion Bar
Springs Torsion Bar
Hip Room Rear Link Type
Shock Absorbers Hydraulic, Direct Action
Rear Suspension Independent trailing arm
Springs Coil
Shock Absorbers Hydraulic, Direct Action
Height Control Electronic Level Control

Brakes

..... Powerdisc—self-adjusting
Master Cylinder Dual hydraulic
Tandem vacuum.
Power Booster Hydraulic for Diesel

Front & Rear

..... Hydraulic for Diesel
Single piston sliding
calipers, vented rotors.

Parking Brake

..... Foot pedal with vacuum release
Action Mechanical on rear brakes.

Telltale Light

..... Indicates hydraulic malfunction
or parking brake applied. Also indicates
low vacuum on HT 4100.

Linings

..... Audible wear indicators

Steering
Gear Ratio Power
..... 15-13:1
Overall Ratio 15-13:1

Wheels & Tires
..... GM Specification Steel-Belted Radial
Sidewall Wide white stripe
Size P205/75R15
(P225/70R15* with Touring Suspension)

Wheels 15 x 6 JJ

Overall Sizes
Tread Width 1506 mm Front (59.3")
..... 1540 mm Rear (60.6")

Turning Diameter (wall-to-wall) 12.8 M (42.2")

Wheelbase 2895 mm (114.0")

Overall Length 5202 mm (204.8")

Overall Height 1379 mm (54.3")

Body Width 1801 mm (70.9")

Curb Weight (with
standard engine) 1725.4 kg (3804 lbs.)

Seating Capacity 3 front/3 rear
(2 front/3 rear for Seville Elegante)

Headroom Front 968 mm (38.1")

Headroom Rear 947 mm (37.3")

Legroom Front 1088 mm (42.8")

Legroom Rear 1002 mm (39.4")

Hip Room Front 1306 mm (51.4")

Hip Room Rear 1375 mm (54.1")

Shoulder Room Front 1414 mm (55.7")

Shoulder Room Rear 1442 mm (56.8")

ALL GASOLINE-POWERED MODELS
Unleaded Fuel. Use only unleaded gasoline meeting Federal government regulations. The Federal government specifies the minimum octane number of unleaded gasoline. Unleaded gasoline must be used for proper emission control system operation. It will also minimize spark plug fouling. The use of leaded gasoline can damage the emission control system, and could result in loss of warranty coverage.

ALL MODELS ON PAGE
Headlamps 4 Rectangular
Cornering Lamps Integral, with side marker lamps
Lamp Monitors Standard front and rear

*Caution: For Use with Tire Chains, See Owner's Manual.

ENGINE AVAILABILITY FOR 1984 SEVILLES.

ENGINE	ORDER CODE	AVAILABILITY
4.1 Liter V8 HT 4100 DFI (A)	LT8	Standard
5.7 Liter Fuel-Injected Diesel V8 (B)	LP9	No-charge option (Not available in California)
[A] Produced by GM-Cadillac Motor Car Division		[B] Produced by GM-Oldsmobile Division

A WORD ABOUT ENGINES: Some Cadillacs are equipped with engines produced by other GM divisions, subsidiaries or affiliated companies worldwide. See your dealer for details.



THE CADILLAC COMMITMENT

We believe that when you buy or lease a Cadillac, you deserve to be treated like a Cadillac owner. And when you take your car in for service, you have the right to expect the type of consideration traditionally reserved for Cadillac owners. We intend to keep that tradition alive.

A WORD ABOUT ASSEMBLY COMPONENTS AND OPTIONAL EQUIPMENT IN THESE CADILLAC PRODUCTS.

The Cadillacs described in this brochure are assembled at facilities of General Motors Corporation operated by Cadillac Lincoln or GM Assembly Division. These vehicles incorporate thousands of different components produced by various divisions of General Motors and by various suppliers to General Motors. From time to time during the manufacturing process, it may be necessary, in order to meet public demand for particular vehicles or equipment, or to meet federally mandated emissions, safety and fuel economy requirements, or for other reasons, to produce Cadillac products

with different components or differently sourced components than initially scheduled. All such components have been approved for use in Cadillac products and will provide the quality performance associated with the Cadillac name.

With respect to extra cost optional equipment, make certain you specify the type of equipment you desire on your vehicle when ordering it from your dealer. Some options may be unavailable when your car is built. Your dealer receives advice regarding current availability of options. You may ask the dealer for this information. GM also requests the dealer to advise you if an option you ordered is unavailable. We suggest that you verify that your car includes the optional equipment you ordered or if there are changes, that they are acceptable to you.



