

1987 FORD LTD CROWN VICTORIA





Best-built North American cars six years running

"Quality is Job 1." In fact, for the past six consecutive years, Ford quality has led all other North American car companies. This is based on an average of owner-reported problems in the first three months of service on '86 models, and in a six-month period on '81-'85 models designed and built in North America.

Classic motoring pleasure

Ford LTD Crown Victoria is a true 6-passenger automobile with traditional large-car room and comfort. With 3766 litres (133 cu. ft.) of passenger and luggage space, Crown Victoria has more room than can be found in 99% of today's cars and a larger trunk than any car in North America (excluding other Ford Motor Company products). Best of all, its superbly designed suspension system provides a smooth, quiet ride—a quality for which Crown Victoria has long been noted.

The LTD Crown Victoria LX Series, described on page 9, represents the highest level of LTD Crown Victoria comfort and luxury for sedan, coupe and wagon models.

Left: LTD Crown Victoria LX 4-Door Sedan with Brougham Roof Treatment in Deep Shadow Blue Metallic.

Some equipment shown may be optional. See options list on page 17.

LTD Crown Victoria 2-Door Coupe, like all Crown Victorias, has standard V-8 power, Automatic Overdrive transmission and a long list of comfort and convenience features.

LTD Crown Victoria 4-Door Sedan adds the entry and exit convenience of four wide-opening doors to Crown Victoria power, comfort and roominess. Everything a 6-passenger sedan should be.

LTD Crown Victoria Wagon, one of the roomiest station wagons built today, can carry six people and lots of cargo simultaneously.

Country Squire Wagon has the classic look of woodtone bodyside and doorgate paneling. Both wagons are available with optional 8-passenger seating.

Ford LTD Crown Victoria



Contents

Ford LTD Crown Victoria Sedan and Coupe	4-7
Ford LTD Crown Victoria Interior	8-9
Ford LTD Crown Victoria Wagons	10-11
Ford Ltd Crown Victoria—The Technical Side	12-13
Preferred Equipment Packages	14-15
Features, Options and Colours	16-17
Safety and Owner Benefits	18-19

Ford LTD Crown Victoria Sedan and Coupe

The smooth, quiet one

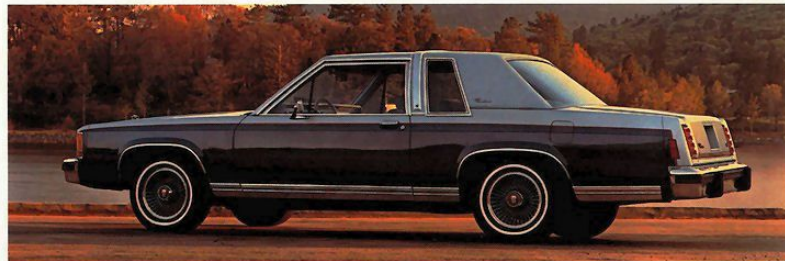
A car's environment should provide a sanctuary from the noise and confusion of the road, not intensify them. The 6-passenger LTD Crown Victoria is known for its quietness. And the smoothness of its ride really must be experienced to be appreciated.

Roomier than 99% of today's automobiles, Crown Victoria's interior compartment is truly comfort oriented. Air conditioning is standard. Door panels and quarter panels are richly trimmed. The floor carpeting is thick, 510 g. (18 oz.) cut pile. The full flight bench front seat (split bench seats are optional) and spacious rear seat have luxury cloth seating surfaces. Dual recliners allow those in the front outboard

Left: LTD Crown Victoria 4-Door Sedan in Dark Grey Metallic.

Right: LTD Crown Victoria 2-Door Coupe in Tu-Tone Silver Metallic over Dark Grey Metallic.

Below: LTD Crown Victoria LX interior shown in Medium Grey. Some equipment shown may be optional. See options list on page 17.



positions to adjust seating attitude to the most enjoyable position for them. And the colour-keyed deluxe safety belts include comfort regulators.

Crown Victoria also features convenience items that add to driving pleasure. The sound of the electronic AM/FM stereo search radio (may be deleted for credit) is enhanced by the quiet environment. There are handy lights in the glove box, front ashtray and in the luggage compartment. An electronic digital clock is standard. And a convenient automatic parking brake release is included.

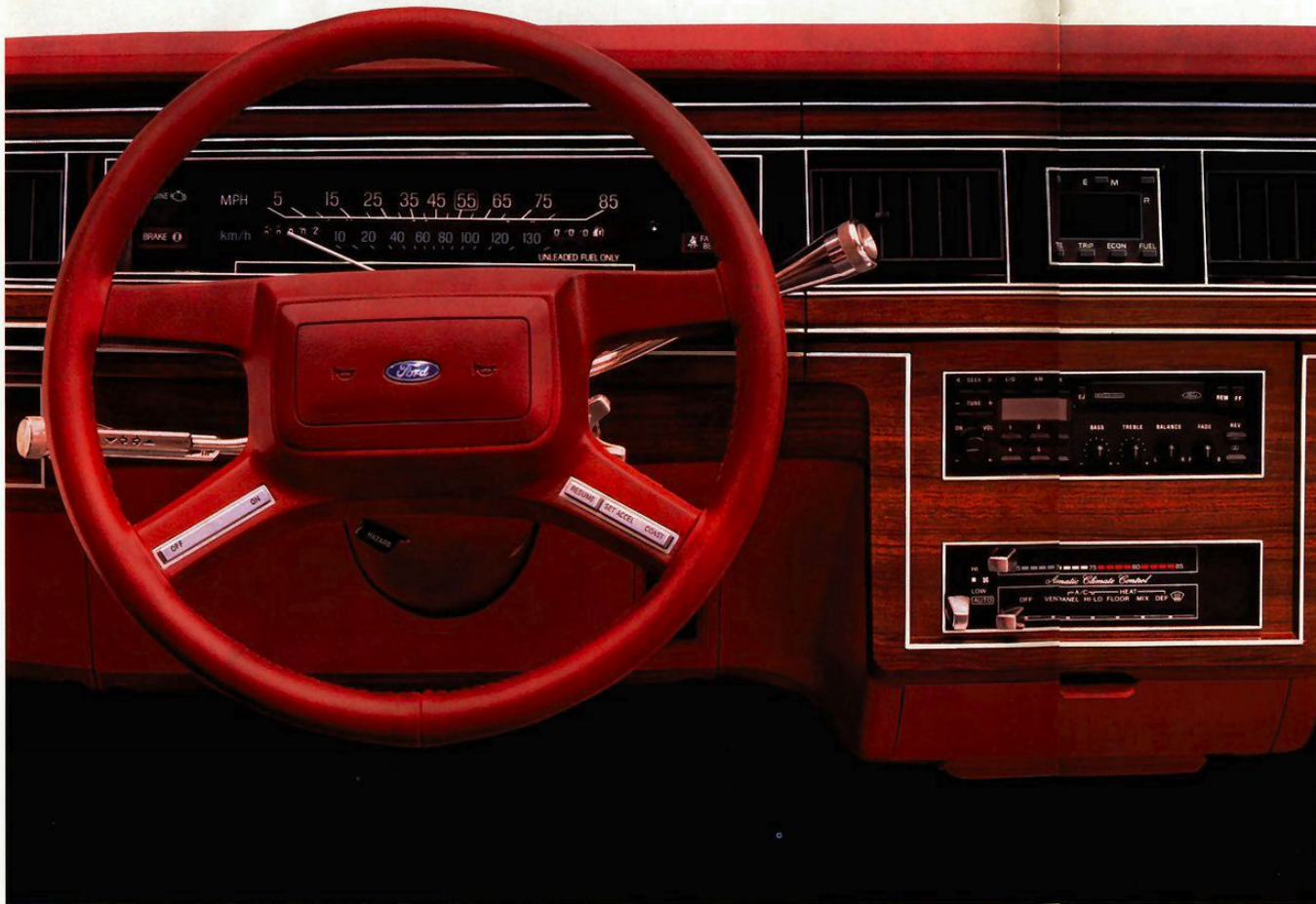
Whether you choose the 2-Door Coupe or the 4-Door Sedan, you'll enjoy the luxury, the smooth ride and the quality of Ford LTD Crown Victoria.

Pages 6 & 7: LTD Crown Victoria LX interior in Canyon Red. Some equipment shown may be optional. See options list on page 17.





An Elegant, Pleasant Environment



Left: The LTD Crown Victoria instrument panel in Canyon Red.



LX split bench seat illustration shown with optional leather seating surfaces and 6-way power seat adjustments indicated.

Some items shown may be optional. See options list on page 17.

6-passenger comfort

LTD Crown Victoria offers full 6-passenger roominess and the kind of luxury and comfort that few cars approach. The front compartment allows occupants over 1092 mm (43-in.) of leg room and more than 1549 mm (61-in.) of shoulder room. The roomy, carpeted deep-well trunk has a low liftover height to facilitate loading and unloading, and 634 litres (22.4 cu.ft.) of space for whatever you want to bring along—the largest trunk in any North American car.*

Seating position, vehicle structure and the placement of instruments were carefully created with the comfort and convenience of the driver and passengers foremost in mind. The doors, seats and roof, for example, were designed for the best combination of head, shoulder, hip and leg room. The low lines of the hood, cowl and belt, together with the narrow roof pillars and large glass area, create a wide field of vision.

*Excluding other Ford Motor Company products.

Intelligent seat design

LTD Crown Victoria seats were carefully created for comfort and firm support. The front seats incorporate strong backs and side rails which support molded foam cushions. Firm but flexible mats provide a large surface for cushion support.

A flight bench seat is standard and includes dual recliners and a fold-down center armrest. Reclining split bench seats are optional (shown on page 5). Available with either is the 6-way power seat option. With it, you can adjust the seat forward/back, up/down, or tilt forward/back for optimum comfort.

LX: high-series comfort

The LX luxury interior is available with all LTD Crown Victoria body styles. Its split bench seats are upholstered in your choice of velour cloth or supersoft vinyl (leather trim upholstery is available at extra cost). Handy map pockets are located on the seat backs. The luxury door trim panels include pull straps and full-length armrests. There's a rear seat center armrest in the coupe and sedan as well. Dual facing rear seats are included with LX wagon models.

LX convenience items include a trip odometer; power side windows; dual electric remote-control mirrors; dual illuminated visor mirrors; dual beam map light; "headlamps on" reminder chime; engine compartment light; dual courtesy lights under the instrument panel and lights indicating low fuel or low oil level.

LTD Crown Victoria LX adds an extra measure of 6-passenger luxury.

Ford LTD Crown Victoria and Country Squire Wagons

Left: LTD Country Squire Wagon, with its classic look of woodtone bodyside and doorgate paneling, in Oxford White.

Right: DuraWeave vinyl upholstery in Midnight Blue.

Below right: the 3-Way Doorgate opens like a door or swings down like a conventional tailgate. Below: LTD Crown Victoria Wagon in Sand Beige. Some equipment shown may be optional. See options list on page 17.

Full-size capability and comfort

LTD Crown Victoria and Country Squire offer the comfort, spaciousness and versatility that only full-size wagons can. Smooth riding and V8-powered, they have the muscle to tow trailers weighing up to 2268 kg. (5000 lbs.)* (2721 kg. (6,000 lbs.) with the optional 5.8 L V-8 engine.)

They offer plenty of load space as well. The cargo volume index is a full 2497 litres (88.2 cu.ft.). There are another 280 litres (9.9 cu.ft.) in a lockable storage compartment beneath the load floor, and 56 litres (2 cu.ft.) more in a handy lockable compartment in the side panel.**

Both feature the 3-Way Doorgate, a Ford innovation, which facilitates the loading and unloading of cargo as well as the entry and exit of people. It opens like a door (with the window open or closed), or swings down like a conventional tailgate (shown below).

Passenger room and comfort are hallmarks of LTD Crown Victoria and Country Squire Wagons. The 6-passenger capacity increases to eight with the optional dual facing rear seats (included with LX trim). And, for comfort with practicality, Ford's DuraWeave vinyl upholstery is optional (shown at left). It looks, feels and breathes like cloth, yet wears and cleans like vinyl. For top-of-the-line luxury, select LTD Crown Victoria or Country Squire LX, described on page 9.

*When equipped with the optional heavy-duty trailer towing package.
**See Measurements on page 19 for volume differences with dual facing rear seats.





Left: LTD Crown Victoria 4-Door Sedan in Black. Some equipment shown may be optional. See options list on page 17.

Ford LTD Crown Victoria— The Technical Side

Solid, efficient engineering

Larger cars have some inherent advantages

Generally speaking, the longer the wheelbase of a vehicle, the better the ride. LTD Crown Victoria combines a 2903 mm (114.3-in.) wheelbase with solid body-on-frame construction. Through the aid of computer design and efficient materials, its frame is a platform of high structural strength, and the body rests on 16 large rubber bushings which eliminate body/frame contact to reduce annoying road noise and vibration.

A quiet ride and smooth control

LTD Crown Victoria's quiet ride is the result of a well-designed suspension system, further enhanced with standard nitrogen gas-pressurized shock absorbers at all four corners. The nitrogen gas is permanently sealed inside the shock, helping to reduce the possibility of an erratic ride and suspension noise by minimizing "aeration" of the shock's oil-based fluid. Aeration can cause shock absorber "fade."

And when it's necessary to smoothly steer around an object, LTD Crown Victoria responds with accurate, power-assisted recirculating ball steering. It's the same basic steering gear design used by Mercedes Benz.

An optional automatic load-leveling suspension

Many people, especially those wagon owners who load up their cars for vacationing or for any other reason, will appreciate the automatic load-leveling suspension option. It compensates for added weight and optimizes ride quality when the car is carrying its maximum load. It's available with all LTD Crown Victoria body styles.

The benefits of electronic fuel injection

The standard 5.0 L V-8 engine with multiple-port, sequential electronic fuel-injection system (SEFI) has significant advantages over a conventional carburetor. The principal one is the more efficient use of fuel, accomplished by the precise high-pressure injection of the fuel near each cylinder intake port.

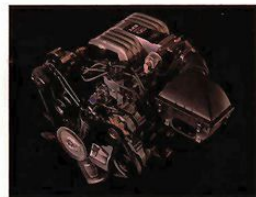
To maximize efficiency, injection is programmed to occur at precisely the right moment for each cylinder. SEFI means improved overall operation, controlled idle speed, smooth running and easier starting in temperature extremes. In Crown Victoria, SEFI is combined with EEC-IV computer engine controls to optimize power, response and efficiency.

A fuel-saving transmission

The Automatic Overdrive transmission (AOD) is a Ford innovation. It plays a key role in LTD Crown Victoria's efficiency. AOD automatically shifts into an overdrive fourth gear when the vehicle exceeds approximately 72 km/h (45 mph). In overdrive, engine speed is reduced by about one-third. The result is improved highway fuel economy and reduced engine wear.

Standard V-8 power

LTD Crown Victoria's standard engine is the 5.0 litre EFI V-8. The combination of V-8 power and body-on-frame construction allows the towing of big trailers (up to 2268 kg, (5000 lbs.) with the standard 5.0 L V-8) (up to 2721 kg, (6000 lbs.) with the optional 5.8 L V-8) with the optional heavy duty trailer towing package. That's a capability most cars cannot match.



Engine shown is equipped for display purposes.

LTD Crown Victoria powertrain

Engine	Transmission	Final Drive Ratio*	
5.0 L EFI V-8	Automatic Overdrive	Std 3.08	Traction-Lok 3.08
5.8 L HO V-8	Automatic Overdrive	2.73	2.73

*The trailer towing package includes a 3.55 axle ratio with 5.0 L engine.



Preferred Equipment Packages

The LTD Crown Victoria LX 4-Door Sedan pictured at left includes Preferred Equipment Package 205A.

Preferred Equipment Packages are combinations of features that have proven popular with many car buyers. By combining them in groups, we simplify the ordering procedure.

Here's how it works: (1) Choose your bodystyle (2-door coupe, 4-door sedan, wagon); (2) Select the Preferred Equipment Package with features you want from the chart at right; (3) Select additional options listed on page 21.

Contents of Preferred Equipment Packages are subject to change. For the latest information, consult your Ford Dealer.

An Easy Way To Buy

Ford LTD Crown Victoria Sedan and Coupe	PREFERRED EQUIPMENT PACKAGES			
	STANDARD		LX	
	205A	201A	205A	206A
P205/75RX15 WSW steel-belted radial-ply tires	●	●	●	●
Conventional spare tire	●	●	●	●
Automatic overdrive transmission	●	●	●	●
Light group ⁽¹⁾	●	●	●	●
Right hand remote control mirror	●	●	●	●
Speed control	●	●	●	●
Front and rear bumper rub strips	●	●	●	●
Power lock group ⁽²⁾	●	●	●	●
Tilt steering wheel	●	●	●	●
Power side windows	●	●	●	●
Interval wipers	●	●	●	●
Front and rear floor mats	●	●	●	●
Power antenna	●	●	●	●
6-way power driver's seat	●	●	●	●
Locking wire style wheel covers	●	●	●	●
Automatic temperature control air conditioning	●	●	●	●
Autolamp on/off delay system ⁽³⁾	●	●	●	●
Illuminated entry system ⁽⁴⁾	●	●	●	●
Premium sound system	●	●	●	●
Electronic AM/FM radio with cassette	●	●	●	●
Leather-wrapped steering wheel	●	●	●	●
Pivoting front vent windows	●	●	●	●

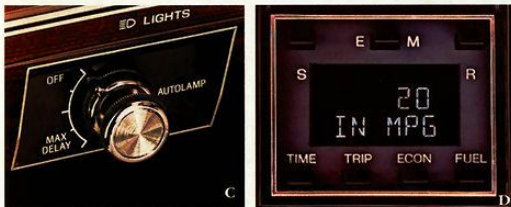
Ford LTD Crown Victoria and Country Squire Wagons	PREFERRED EQUIPMENT PACKAGES		
	STANDARD		LX
	218A	211A	215A
P205/75RX15 WSW steel-belted radial ply tires	●	●	●
Automatic overdrive transmission	●	●	●
Light group ⁽¹⁾	●	●	●
Deluxe luggage rack	●	●	●
Right hand remote control mirror	●	●	●
Speed control	●	●	●
Heavy duty handling suspension ⁽²⁾	●	●	●
Front and rear bumper rub strips	●	●	●
Front and rear floor mats	●	●	●
Power lock group ⁽²⁾	●	●	●
Vinyl insert bodyside mouldings	●	●	●
Tilt steering wheel	●	●	●
Power side windows	●	●	●
Interval wipers	●	●	●
Automatic temperature control air conditioning	●	●	●
Autolamp on/off delay system ⁽³⁾	●	●	●
Power antenna	●	●	●
Premium sound system	●	●	●
Electronic AM/FM radio with cassette	●	●	●
Leather-wrapped steering wheel	●	●	●
Pivoting front vent windows	●	●	●

(1) Includes: dual beam/dome map light, "headlamps-on" reminder chimes, dual instrument panel courtesy lights and engine compartment light. (2) Includes: power door locks, remote-control electric decklid release on sedans and electric tailgate lock on station wagons. (3) Includes: automatic headlamp on/off feature plus variable headlamp turn-off delay. (4) Includes: door lock illumination and time delayed interior lighting feature. (5) Includes: upgraded front and rear springs, shock absorbers, increased diameter front stabilizer bar, and rear stabilizer (on sedans).

Well-Equipped Cars and Personalized Options



Illustrated options: (A) Electronic AM/FM stereo search radio with cassette tape player (Note: A radio of a different design may be substituted during the model year.) **(B)** Brougham roof treatment (available only on 4-door sedans) **(C)** Autolamp System **(D)** Tripminder® computer (described at right) **(E)** Cast aluminum wheels, locking wire-style wheel covers.



Notable standard features and options for each LTD Crown Victoria series are listed on the facing page. In selecting the options you want, compare your choices with the Preferred Equipment Packages on page 15. You're likely to find that most of the equipment you want has already been conveniently included for you in a particular package. Options and their availability are subject to change during the year. Your Ford Dealer can advise you of current status.

Tripminder® computer

The Tripminder® computer option (shown at left) provides all kinds of travel information at your fingertips: Average trip speed, distance covered per gallon of fuel used, instantaneous fuel economy, and total fuel used. Also provided is the date, time, and elapsed trip time and distance. English or metric readout.

Premium Sound System

Enjoy the advantages of the Premium Sound System with any of our stereo radios. Six premium speakers surround you with sound, and the power amplifier boosts the wattage for top performance.

Convenience Group and Light Group

Choose either or both for those appreciated "extras." Convenience Group includes interval windshield wipers, remote-control electric decklid release (Sedan and Coupe only), trip odometer, and low fuel and low oil level alert lights. The Light Group features a dual beam map light, "headlamps on" reminder chime, engine compartment light, and dual courtesy lights under the instrument panel.

Ford LTD Crown Victoria Features and Options

	Sedan/ Coupe	Wagon/ Country Square	LX ⁽¹⁾
ENGINEERING			
5.0 litre V-8 engine with SEF (see page 13)	•	•	•
5.8 litre HO V-8 engine	•	•	•
Automatic Overdrive transmission	•	•	•
Power steering	•	•	•
Power front disc/rear drum brakes	•	•	•
Nitrogen gas-pressurized shock absorbers	•	•	•
Electronic voltage regulator	•	•	•
DuraSpark electronic ignition	•	•	•
Super Luxury sound insulation	•	•	•
Power ventilation	•	•	•
P205/75R15 steel-belted radial WSW tires	•	•	•
P205/75R x 15 WSW puncture sealant steel-belted radial tires	•	•	•
P215/70R x 15 WSW all-season steel-belted radial tires	•	•	•
Three-way doorgate	•	•	•
Power doorgate window	•	•	•
Heavy-duty rear brakes	•	•	•
EXTERIOR			
Padded rear half vinyl roof	•	•	•
Dual rectangular halogen headlamps	•	•	•
Front and rear bumper guards	•	•	•
Black rocker panel mouldings	•	•	•
Bright rocker panel mouldings	•	•	•
Left-hand remote-control mirror	•	•	•
Right-hand remote-control mirror	•	•	•
Dual electric remote-control mirrors ⁽⁴⁾	•	•	•
Vinyl insert bodyside mouldings ⁽⁵⁾	•	•	•
Hood accent stripes	•	•	•
Decklid tape stripes	•	•	•
Bodyside accent stripes	•	•	•
Bright wheelip mouldings	•	•	•
INTERIOR			
Flight bench front seat with dual recliners and fold-down centre armrest	•	•	•
Split bench front seats with dual recliners	•	•	•
Cloth seating surfaces	•	•	•
All-vinyl seat trim	•	•	•
Leather upholstery	•	•	•
Dual facing rear seats	•	•	•
Deluxe door trim, carpeted lower panel	•	•	•
Luxury door trim with pull straps and full-length armrests	•	•	•
Electronic digital clock	•	•	•
510 g (18 oz.) colour-keyed luxury floor carpet	•	•	•
4-Spoke luxury steering wheel	•	•	•
Colour-keyed deluxe safety belts with comfort regulator feature	•	•	•
Courtesy lights in glove box, front ashtray, trunk (Coupe/Sedan), cargo area (Wagons)	•	•	•
Light Group (see page 16)	•	•	•
Automatic parking brake release	•	•	•
Pivoting front vent windows	•	•	•
Power side windows	•	•	•
Tinted glass, complete	•	•	•

	Sedan/ Coupe	Wagon/ Country Square	LX ⁽¹⁾
ENTERTAINMENT SYSTEMS			
Electronic AM/FM stereo search radio with 4 speakers (may be deleted for credit)	•	•	•
Electronic AM/FM stereo search radio with cassette tape player	•	•	•
Power radio antenna	•	•	•
Premium Sound System (see page 16)	•	•	•
APPEARANCE			
Brougham roof treatment	•	•	•
Tu-Tone paint treatment with tape stripes	•	•	•
COMFORT			
Air conditioning, manual temperature control ⁽¹¹⁾	•	•	•
Air conditioning, automatic climate control	•	•	•
6-Way power driver's seat	•	•	•
Dual 6-way power split bench seats	•	•	•
Leather-wrapped luxury steering wheel	•	•	•
CONVENIENCE			
Autolamp on/off delay system	•	•	•
Convenience Group (see page 16)	•	•	•
Front cornering lamps	•	•	•
Rear window defroster	•	•	•
Illuminated Entry System	•	•	•
Power Lock Group ⁽¹⁰⁾	•	•	•
Deluxe luggage rack	•	•	•
Speed control	•	•	•
Tilt steering wheel	•	•	•
Tripminder® computer ⁽²⁾ (see page 16)	•	•	•
Interval windshield wipers	•	•	•
Engine block immersion heater	•	•	•
PROTECTION			
Front and rear bumper rub strips	•	•	•
Front and rear colour-keyed carpeted floor mats	•	•	•
WHEELS/WHEEL COVERS			
Deluxe wheel covers	•	•	•
Locking wire-style wheel covers	•	•	•
Cast aluminum wheels	•	•	•
PERFORMANCE			
Traction-Lok axle	•	•	•
Heavy-duty battery (71 amp)	•	•	•
Conventional spare tire	•	•	•
Automatic load-leveling suspension	•	•	•
Heavy-duty/handling suspension	•	•	•
Heavy-duty trailer towing package	•	•	•

● - Standard ■ - Optional
 (1) Available with Coupe, Sedan and Wagon/Country Square models. (2) With Wagons only.
 (3) Sedan and Coupe only. (4) Included with standard Sedan when power side windows are ordered included with standard Coupe. (5) Optional on Country Square and on Coupes/Sedans with Tu-Tone paint. (6) Not available with Country Square. (7) Luxury level trim: choice of velour cloth or supersoft vinyl. (8) Standard on 2-Door Coupe, optional with all others. (9) Sedan only. (10) Includes power door locks, remote-control electric decklid release (Sedan and Coupe), power doorgate lock (Wagons). (11) May be deleted when optional 5.8L engine is ordered. (12) Available with 5.0L engine only.

Colours & Trims

	Midnight Blue	Clove Brown	Country Red	Medium Grey	Sand Beige	Exterior Paint Colours
	X	X	X	X		Black
	X	X	X			Dark Grey Metallic
	X	X	X			Silver Metallic
	X	X	X			Light Grey
	X	X	X			Midnight Canyon Red Metallic
	X					Spinaker Blue
	X	X				Deep Shadow Blue Metallic
	X	X				Medium Shadow Blue Metallic
	X	X				Medium Sand Beige
	X	X				Sand Beige
	X	X				Dark Clove Brown Metallic
	X	X	X	X		Oxford White
						Tu-Tone Colours
	X	X				Black/Dark Grey Metallic
	X	X				Silver Metallic/ Dark Grey Metallic
X						Deep Shadow Blue Metallic/ Medium Shadow Blue Metallic
X		X				Sand Beige/ Medium Sand Beige

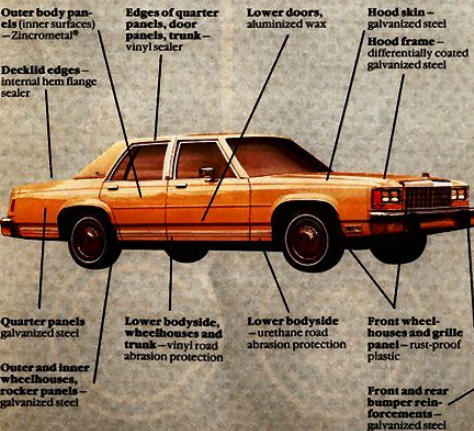
Some of the paint and trim colours are shown in this catalogue. On the printed page, of course, colours are at best only representative of the originals. Your Ford Dealer can show you actual samples of the paint colours and trim materials presented above as well as Tu-Tone paint combinations. Ask about paint and trim colour availability with the following vinyl roof colours: Black, Sand Beige, Deep Shadow Blue, Light Charcoal, Midnight Canyon Red, Oxford White and Clove Brown.

Special quality steps: corrosion protection

Every Ford car built in North America is protected with the DURAGUARD System, which includes 7 processes built in at the factory as standard equipment, to provide corrosion protection as follows: □ precoated steel on doors, quarter panels, hoods and other selected areas; □ galvanized steel on rocker panels, selected cowl tops and underbody parts; □ vinyl sealer on the underside of rear wheelhouses; □ phosphate coating on the entire car body after a super cleaning process; □ an electrocoat process to apply corrosion resistant primer paint on the entire body; □ aluminized wax sprayed into hard-to-reach lower body areas, and the inside surfaces of doors; □ protective vinyl or urethane coating behind the wheel openings and along the lower bodyside area.



□ The DURAGUARD System is backed by a no-extra charge 5 year unlimited distance manufacturer's warranty against corrosion perforation. This warranty, transferable to succeeding owners, covers the cost of both labour and materials for repair of perforation of sheet metal and all other components except exhaust system, caused by corrosion.



Safety and Owner Benefits

The Ford Quality Commitment

The Ford Quality Commitment is built on a basic and simple concept: Integrity. Integrity in the way we build our products, integrity in our dealerships' service and integrity in the treatment of our customers.

Together we can save lives

In all Ford cars, outboard front seat lap and shoulder belts have automatic retractors and comfort regulators. Outboard rear seat positions also have lap belts with retractors.



Ford Safety Design Features

Vehicle operation

- Hydraulic brake system with warning light
- Corrosion-resistant brake lines
- Flash-to-pass headlamps
- Turn indicator with lane-changing signal feature
- Hazard warning flasher
- Backup lamps
- Side marker lamps
- Parking lamps coupled with headlamps
- High-mount stop lamp
- Two-speed windshield wipers
- Windshield washers
- Outside rearview mirror, driver's side
- Glare-reduced instrument panel, windshield wiper arms and windshield pillars
- Uniform transmission shift quadrant with safety switch
- Continuously variable control illumination intensity (instrument cluster lighting)
- Safety hood latch system
- Function-rated windshield defroster system
- Tamper-resistant (non-reversing) odometer
- Speedometer with highlighted 88 km/h (55 mph)

Occupant protection

- Safety-designed front end structure
- Safety-designed roof structure
- Steel guard rails in side doors
- Safety-designed door hinges and double yoke safety door latches
- Integral lap and shoulder belts with automatic retractors for front outboard occupants
- Safety belt fastening reminder warning light and chime for the driver's seat
- Lap belts for center front and all rear seating positions with retractors for rear outboard occupants and optional dual facing rear seats
- Energy-absorbing steering column and steering wheel
- Energy-absorbing armrests and safety-designed door handles
- Energy-absorbing instrument panel with padding for right and center front passengers
- Energy-absorbing sun visors
- Energy-absorbing front seat back tops
- Self-locking front seat back latches on 2-doors
- Head restraints for front outboard occupants
- Safety glove box latch
- Inside yieldaway rearview mirror
- Impact-absorbing laminated safety glass windshield
- Flame-resistant interior materials
- Safety-designed coat hooks
- Safety-designed radio control knobs and push buttons
- Rear door child-proof locks

Anti-theft

- Locking steering column with warning key chime (with "Park" interlock for key release)
- Visible vehicle identification number

Child-proof rear door locks

- Ford LTD Crown Victoria 4-door models are equipped with child-proof rear door locks. The locking mechanisms are manually operated and located in the door jambs to prevent children from accidentally opening the rear doors from the inside.

8 km/h (5 mph) bumpers

Bumper systems on Ford cars are designed to protect lamps, cooling system, exhaust and other body components in the event of a minor impact. Ford equips every car it makes with bumpers designed to absorb impacts of 8 km/h (5 mph).



Ford Dealers* offer the Lifetime Service Guarantee (Permanent Repair Protection in the Province of Quebec). Under this program, Ford Dealers* stand behind their repairs to Ford built cars and light trucks for as long as you own your vehicle. This means you pay for a covered repair once and never again. If the same part ever has to be replaced again through normal use, your Ford Dealer* will fix it at no charge. No charge for parts. No charge for labour. It doesn't matter where you purchased your vehicle, or whether it's new or used; the work is still covered by the repairing Dealer.*

A combination unmatched by any North American manufacturer: the three-year unlimited distance powertrain warranty



Most powertrain warranties don't cover you for an unlimited number of kilometres. Those that do don't cover you for a full 3 years. Ours does both. It's a combination unmatched by any other North American manufacturer. The warranty covers major powertrain components on 1987 Ford cars. It's limited and certain deductibles apply. Ask to see this warranty at your Ford Dealer.

This limited protection covers thousands of parts for vehicles in normal use. Items not covered include regular maintenance parts, belts, hoses, sheet metal and upholstery. See your Ford Dealer* for complete details.

*At participating Dealers only.

†For as long as you own your car or light truck. This program is not available in all Provinces. See your dealer for details.



The optional Ford Extended Service Plan covers major components on new Ford cars and light trucks for longer than the vehicle's basic warranty. The cost of this added protection is so moderate that it could pay for itself the first time you need it. Your Ford Dealer has full details.



QUALITY REPLACEMENT PARTS FROM FORD

Genuine Ford and Motorcraft original equipment replacement parts meet the same high standards as those installed in production. They are your best assurance of quality and long-term satisfaction.



Ford Credit Canada, Limited, is interested in helping to fill the transportation needs of every qualified buyer of a Ford product. A participating dealer can arrange financing terms or a Red Carpet Lease* tailored to your circumstances. Ford Credit Canada, Limited has offices conveniently located throughout Canada.

Measurements

	Sedan/Coupe	Wagon
Wheelbase — mm (in.)	2903 (114.3)	2903 (114.3)
Length — mm (in.)	5359 (211.0)	5461 (215.0)
Height — mm (in.)	1404 (55.3)	1450 (57.1)
Width — mm (in.)	1968 (77.5)	2014 (79.3)
Front tread — mm (in.)	1579 (62.2)	1579 (62.2)
Rear tread — mm (in.)	1574 (62.0)	1574 (62.0)
Trunk capacity/cargo volume index — litres (cu. ft.)	834 (22.4)*	2497 (88.2)**
Fuel capacity — litres (imp. gal.)	68.0 (15.0)	68.0 (15.0)
Curb weight — kg (lb.)	1696 (3741)†	1778 (3920)
Passenger capacity	6	6‡

*With standard mini-spare tire. †271 (21) with optional conventional spare. **Plus 290 litres (8.9 cu. ft.) in a lockable storage compartment beneath the load floor (151 litres (5.7 cu. ft.) with dual facing rear seats, 216 litres (7.7 cu. ft.) with seat cushions removed) and 56 litres (2.0 cu. ft.) in a lockable side storage compartment. †1689 (3724) for 2-door. ‡Eight with optional dual facing rear seats.

Buy or lease a new
Ford LTD
Crown Victoria

Quality is Job 1.



FORD LTD
CROWN VICTORIA

