

THE MIATA BY MAZDA

1999



PERSPECTIVE

It's the same Miata you've always wanted. Yet it's all new, reengineered from top to bottom, front to back, inside and out. Except for the one quality we didn't touch—its legendary spirit, the purity of purpose that's made the Miata the world's favorite sports car.



Miata with Touring Package

MIATA ENGINEERING

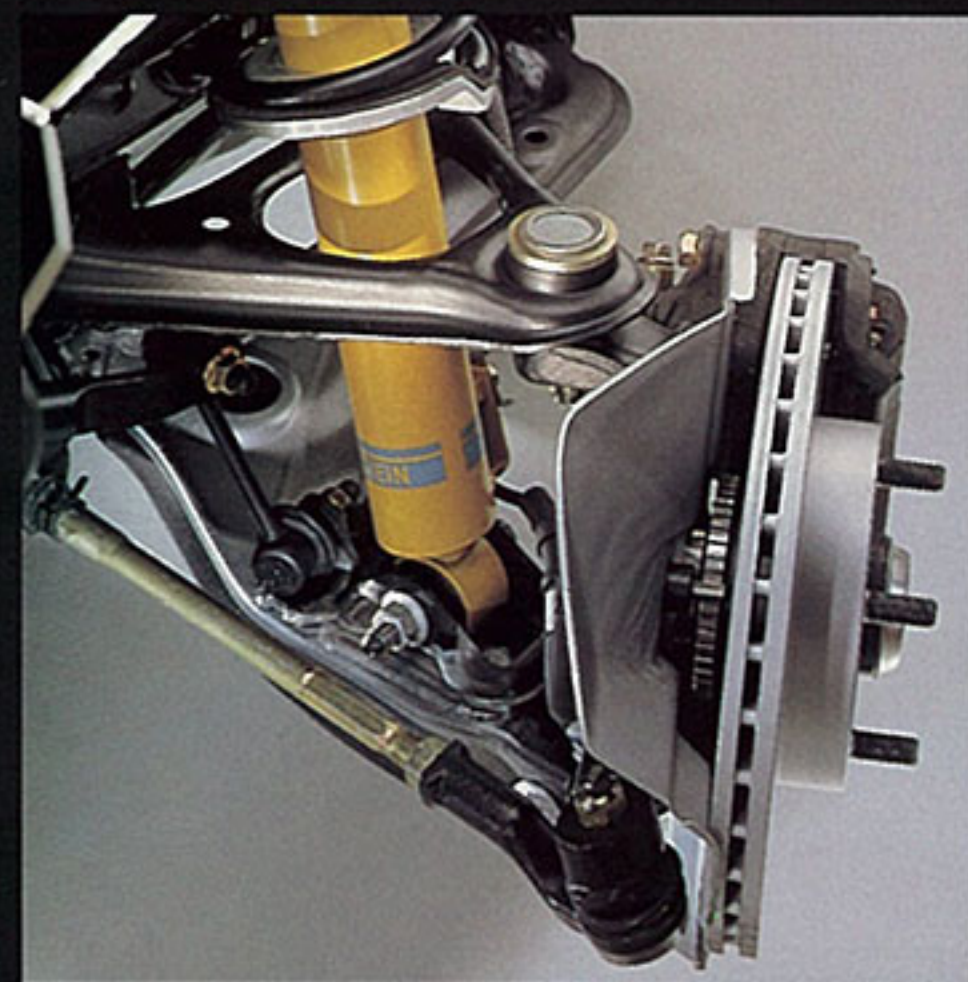
What makes a sports car great? Start with response—an instant answer to your lightest touch on the gas. Taking an engine already near the ideal, we redesigned the cylinder head, added a Variable Intake Control System (VICS), revised the cam profiles, redesigned the intake and exhaust ports and put in high-compression pistons. The payoff? Response that feels lightning-quick. More horsepower and torque. The fastest Miata ever.

Accelerating through the Miata's gears, listening to the engine, has always ranked among life's purest driving pleasures. Now, we've taken the short-throw 5-speed, already considered by many experts to be the very best sports-car transmission in the world, and given it lighter effort and an even tighter feel. Shifting has never been so quick and precise. And the new exhaust note has never sounded so rich.



MIATA ENGINEERING

Design advances to the Miata's double-wishbone suspension include attaching the springs and shocks separately to the body to reduce road noise and vibration, changing the steering geometry and increasing the rear-wheel travel. So a design that was already great is now even closer to perfection.

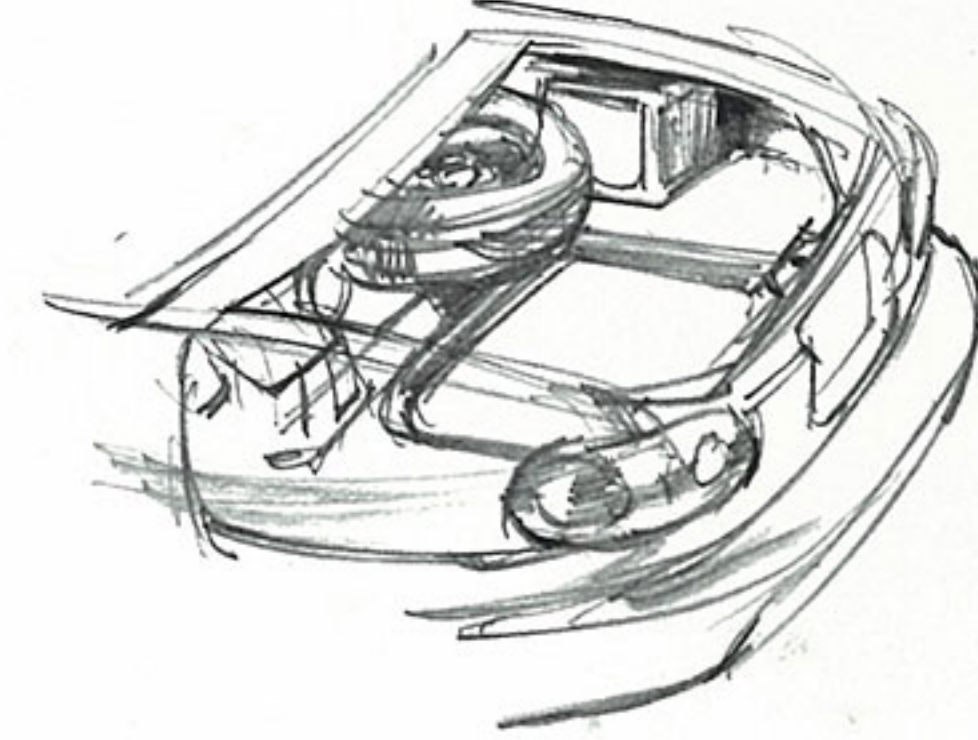


By relocating the tie-rod attachment points and the upper- and lower-arm pivots, Mazda engineers effected a significant improvement in the car's straight-line stability, giving it a surer and more solid feel on the road.

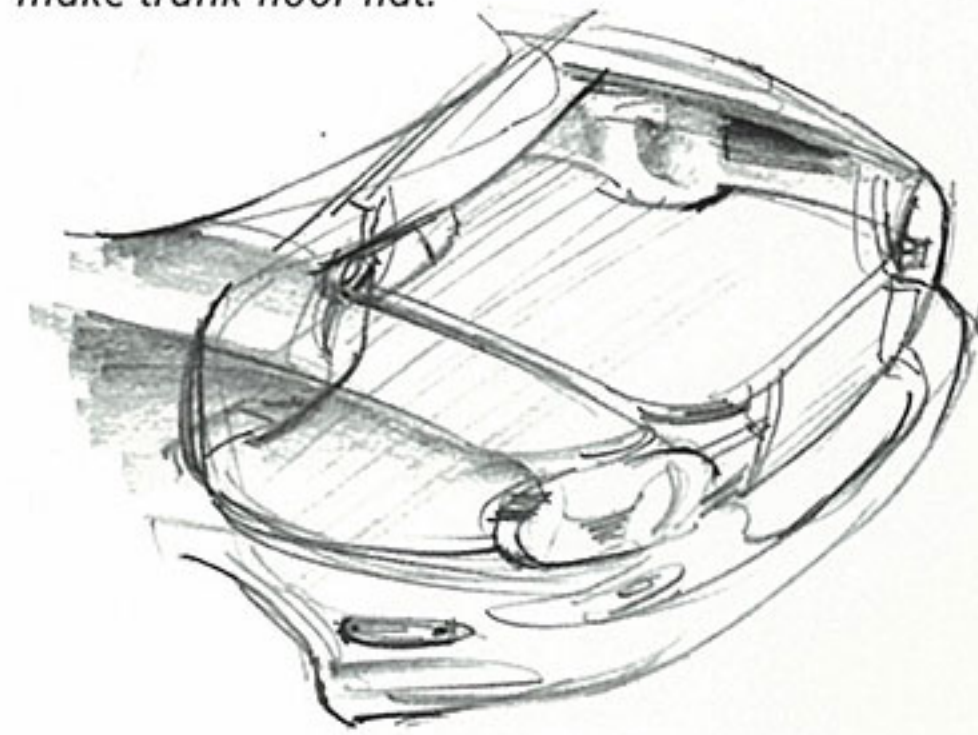
11

Few cars at any price have ever offered the level of road feel and feedback that Miata drivers routinely enjoy. Yet the new Miata tops it. Our engineers reexamined every detail of the suspension, down to the last bushing. So the new Miata now responds to your steering input almost as if your thoughts were in direct contact with the road. With a wider track, its cornering ability brings a souped-up slot car to mind. Then we smoothed the ride, reduced body roll and improved the on-center steering feel. Sound good? Wait till you get behind the wheel.

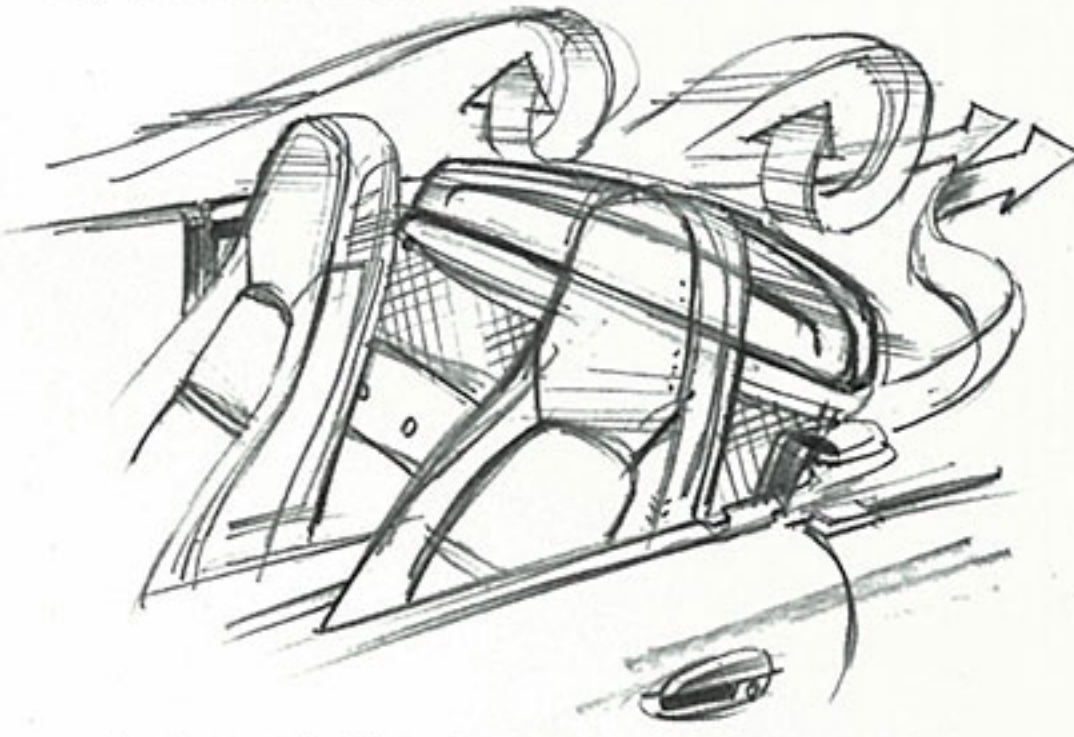
Goal: Improve trunk usefulness without making car bigger.



Solution: Relocate spare and battery, make trunk floor flat.



Goal: Improve top-down comfort.



Solution: Windblocker™ panel behind seats to redirect airflow, reduce cockpit turbulence.

STYLING & STRUCTURE

Look at it, and you know instantly it's a Miata. But it's now a more aggressive Miata, a car with presence that says you own the road. Beneath the newly resculpted body, we strengthened and stiffened the structure, for a new and confidence-inspiring road feel. And because we did it without increasing the car's weight, the new power goes straight into

Unlike most competitors, the convertible top now features a glass rear window.



better performance. While we made many improvements, the theme remains the same. The Miata is—

and always has been—purpose-built. Engineered as a pure sports car from the ground up, not based on a sedan, it's a special machine. Its focus makes it unique—lightweight, strong and perfectly balanced.

13



Miata with Leather Package

MIATA COCKPIT

Overlooking nothing in enhancing your driving experience, we refined the design of the cockpit too. The gauges present a more integrated appearance. We improved the controls and moved the radio to a more convenient spot. The lighter-weight top operates with less effort. And when it's up, you'll look through a new glass rear window, clearer and more durable than plastic, and complete with defogger. All the better to see the expressions of people who wish they were driving a Miata too.



A deactivation switch for the passenger-side air bag allows use of a child safety seat. See the Specifications page for important information.

The Miata instrument panel gives you fingertip command of the car's exhilarating performance.



DRIVING EXPERIENCE

"It's a risky business to make changes to an icon such as the Miata, but Mazda has done it with intelligence and style."

—Road & Track, December 1997

"...remaining fully intact are all the wonderful traits that made the original car fun to drive and easy to own."

—Motor Trend, December 1997

"The car is eminently deserving of a 'wow.' "

—AutoWeek, November 3, 1997

"It is a different car than it was, yet the Miata's original spirit of joy, simplicity, and 'oneness between horse and rider' remains intact."

—Automobile Magazine, December 1997



Driving the new Miata will sure beat reading about it. But until you have that chance, savor it vicariously through the words of the experts.





Miata with Popular Equipment Package

The Sports Package option takes Miata handling up to the very highest level. It includes Bilstein shocks, low-profile 15-inch radials, a front air dam, rear spoiler and more. (Opt. hardtop shown)



The Leather Package option includes not only tan leather upholstery and tan top, it also features a new Bose® audio system and 15-inch alloy wheels with low-profile radials.



MIATA SPECIFICATIONS AND FEATURES

ENGINE

Type	In-line 4-cylinder
Valve gear	DOHC 16-valve
Displacement	1.8 liters (1839 cc)
Bore and stroke	3.27 x 3.35 inches
Compression ratio	9.5:1
Horsepower, SAE net	Fed: 140 @ 6500 rpm CA*: 138 @ 6500 rpm
Torque, SAE net lb-ft	Fed: 119 @ 5500 rpm CA*: 117 @ 5000 rpm
Fuel system	Multipoint electronic fuel injection
Recommended fuel	Regular unleaded
Ignition system	Distributorless electronic

DRIVETRAIN

Type	Front engine, rear-wheel drive
Transmission	5-speed manual with overdrive Optional 4-speed electronically controlled automatic with overdrive, lockup torque converter and overdrive lockout

CHASSIS

Frame	Unit body with Power Plant Frame
Suspension	Fully independent, double-wishbone type with coil springs, gas-filled shock absorbers, and front & rear stabilizer bars
Steering	Rock-and-pinion; engine-rpm-sensing variable power assist (optional)
Ratio	18:1 (15:1 with power assist)
Turns, lock-to-lock	3.2 (2.7 with power assist)
Turning circle dia.	30.2 feet
Brakes	Power-assisted with dual diagonal hydraulic circuits
Front	10.0-inch ventilated discs
Rear	9.9-inch solid discs
Tires	P185/60HR14 radials; P195/50VR15 radials (Leather & Sports Packages)
Fuel capacity	12.7 gallons
Curb weight	2299 lb (2363 lb w/automatic transmission)

DIMENSIONS (INCHES)

Wheelbase	89.2
Length	155.3
Width	66.1
Height	48.4
Track: Front	55.3 (55.7 w/alloy wheels)
Rear	56.3 (56.7 w/alloy wheels)
Headroom	37.1
Legroom	42.8
Shoulder room	49.7
Cargo volume	5.1 cubic feet

EPA MILEAGE ESTIMATES (MPG)

Manual transmission	25 city, 29 highway
Automatic transmission	23 city, 28 highway

STANDARD FEATURES

Dual air bag Supplemental Restraint System (SRS)[†] with passenger-side deactivation switch
 Black convertible[®] top with glass window
 Black cloth reclining bucket seats
 AM/FM/CD stereo with digital clock
 2-speed windshield wipers with intermittent setting
 Rear window defogger
 Dual body-color mirrors
 Door map pockets
 Passenger seatback map pocket
 Passenger's vanity mirror
 Tachometer, engine coolant temperature gauge, oil-pressure gauge
 Speedometer with LCD odometer and trip odometer
 Lockable center console with storage compartment and dual cup holders
 Lockable glove compartment
 Remote trunk and fuel-door releases
 14-inch styled steel wheels with bright center caps
 Heater/defroster with rotary controls and 4-speed blower

OPTION PACKAGES

Touring Package: Power-assisted steering, 14-inch alloy wheels, power windows and mirrors, and NARDI[®] 3-spoke leather-wrapped steering wheel
Popular Equipment Package: Touring Package, plus Torsen[®] limited-slip differential (manual transmission only), cruise control, power door locks, upgraded sound system with door-mounted tweeters & power antenna, and Windblocker[™] antidraft panel
Leather Package: Popular Equipment Package, plus tan interior with leather seating surfaces[‡] and tan convertible top, 15-inch alloy wheels with P195/50VR15 radials, and Bose[®] audio system
Sports Package: (manual transmission only) Torsen[®] limited-slip differential, 15-inch alloy wheels with P195/50VR15 radials, NARDI[®] 3-spoke leather-wrapped steering wheel, sport suspension with Bilstein[®] shock absorbers, front strut tower brace, front air dam, and rear spoiler
Appearance Package: (n/a with Sports Pkg.) Front air dam, side sill extensions, rear spoiler, rear mud guards, and fog lights

OPTIONAL FEATURES

Air conditioning
Anti-lock Brake System (ABS) (requires Leather Package or Popular Equipment Package with Bose[®] audio system)
4-speed electronically controlled automatic transmission (requires power steering)
Detachable hardtop
Bose[®] audio system (requires Popular Equipment Package)
Power-assisted steering
Fog lights
Bright wheel trim rings

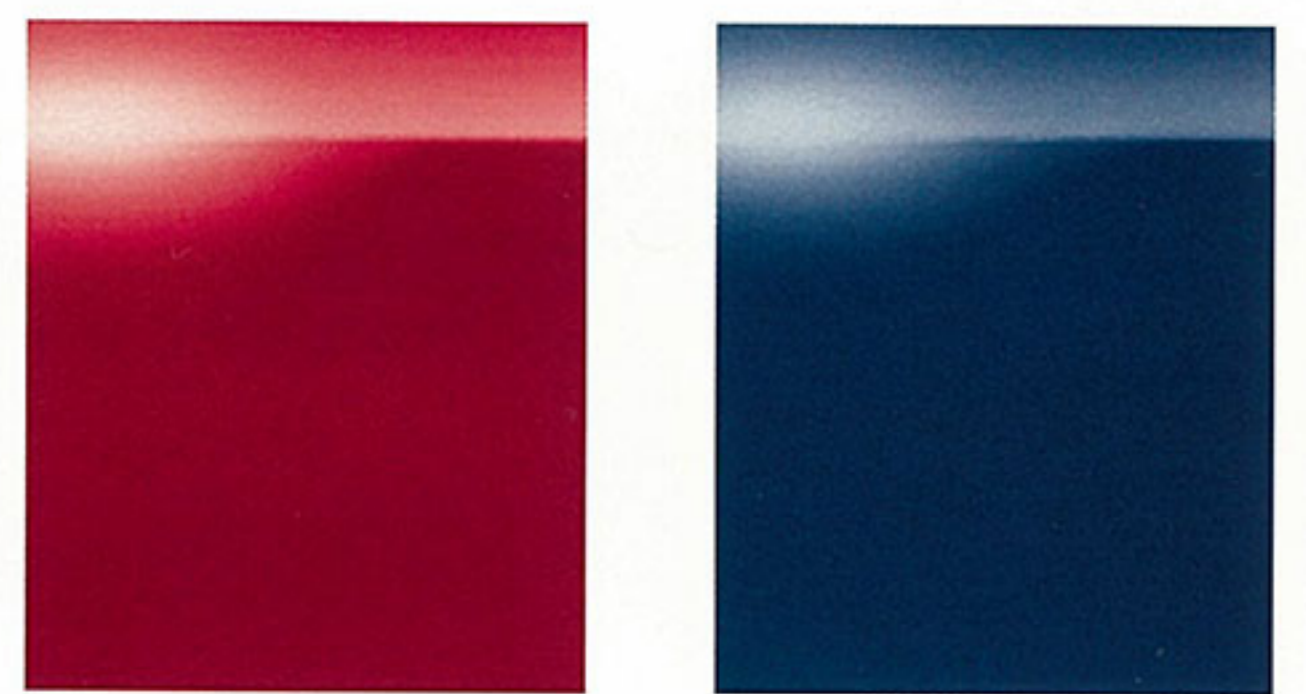
*Also applies to NY, MA and CT. †Special precautions must be taken when using a rear-facing child-safety seat in this vehicle. Before installing any child-safety seat, please review the owner's manual. ‡Seating surfaces upholstered in leather except for vinyl on seat side panels, rear sides of seatbacks and other minor areas.

MIATA COLORS



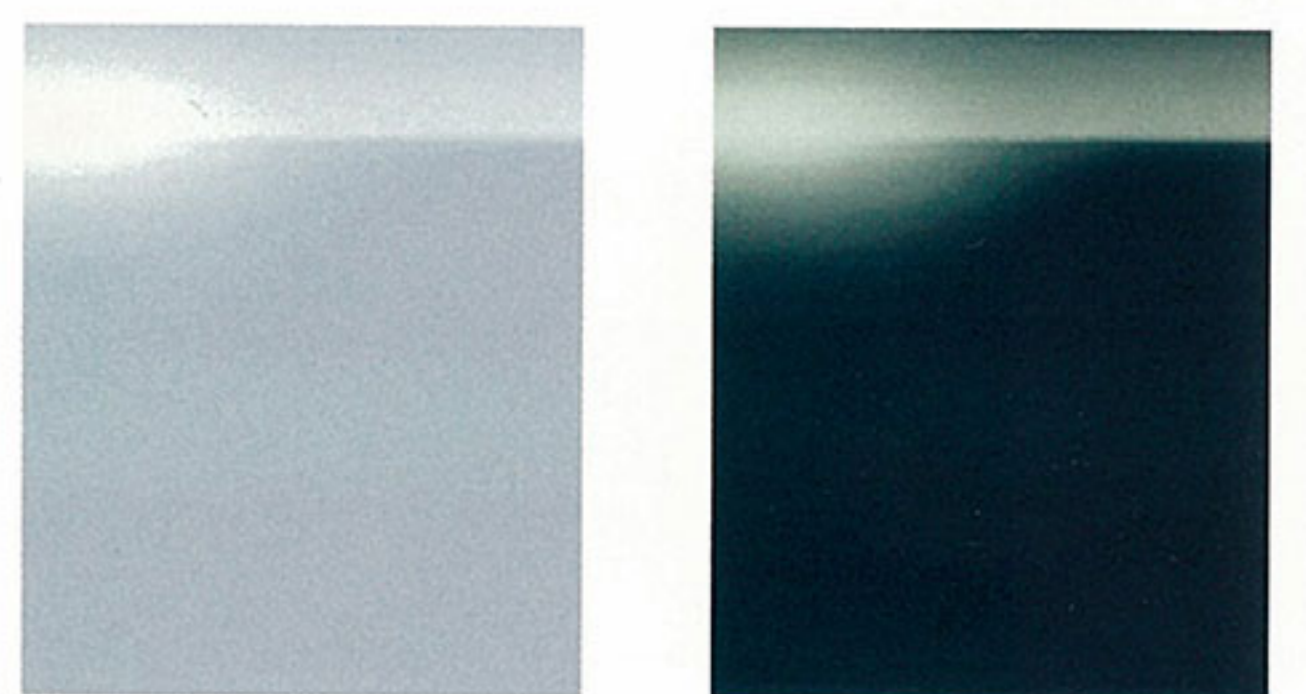
White

Brilliant Black



Classic Red

Twilight Blue Mica



Highlight Silver Metallic

Emerald Mica

COLOR COMBINATIONS (INTERIOR/EXTERIOR)

Black Cloth/All colors
 Tan Leather[‡]/All colors *Not available with Sports Package

SAFETY FEATURES

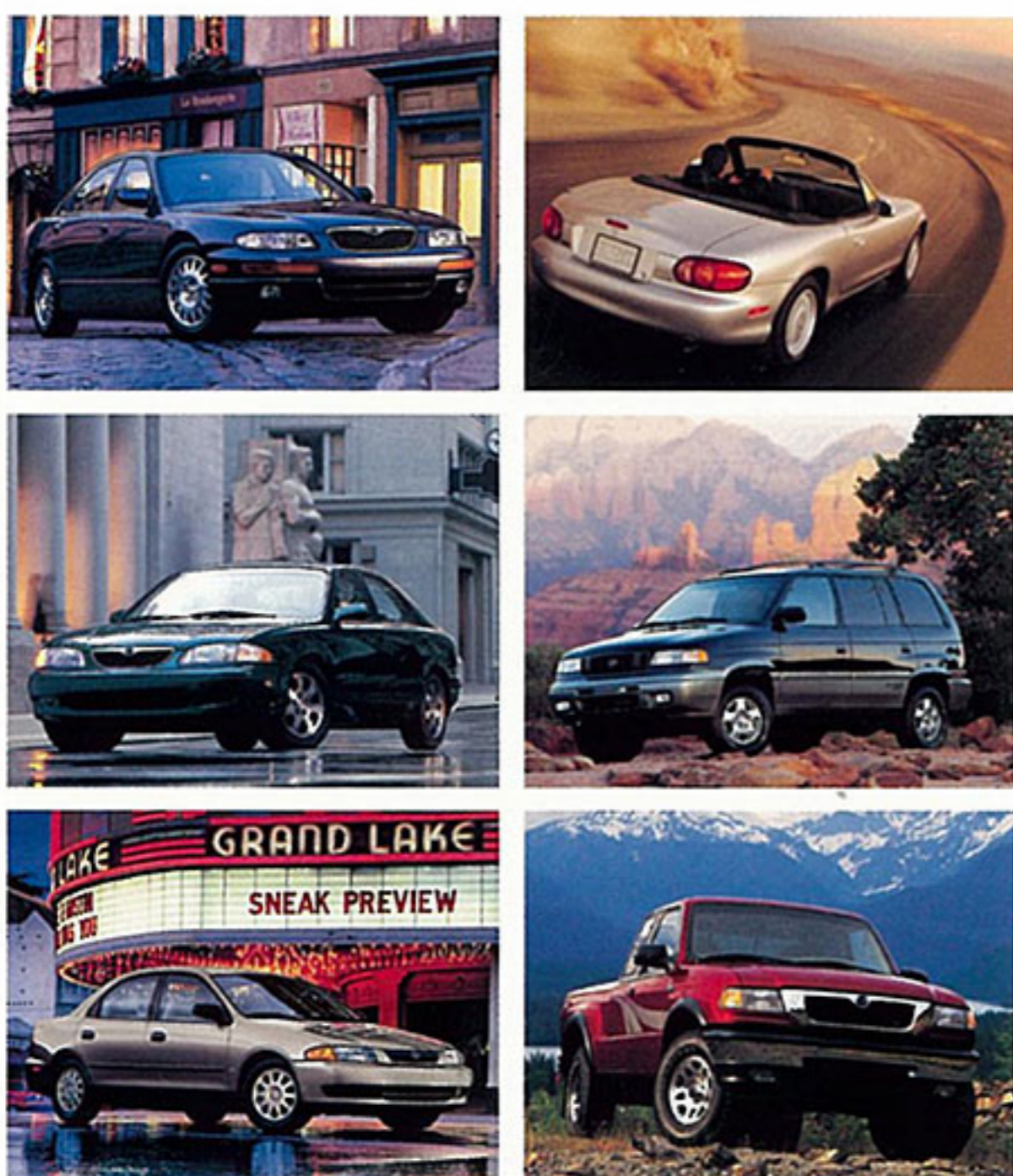
- Dual air bag Supplemental Restraint System (SRS)[†] with passenger-side deactivation switch
- Three-point safety belts
- Rear window defogger
- Anti-lock Brake System (ABS) (opt.)
- Energy-absorbing "crumple zones"
- Side-impact beams
- Dual-circuit 4-wheel disc brakes
- Energy-absorbing steering column & instrument panel
- Center high-mount stop lamp
- Breakaway inside rearview mirror
- Clutch interlock (manual transmission)
- Shift interlock (automatic transmission)

THE MAZDA COMMITMENT

WARRANTY

Mazda warrants that the Mazda vehicle will be free of defects with normal use and prescribed maintenance for 36 months or 50,000 miles, whichever comes first, or Mazda will repair any problem without charge. Ordinary maintenance items or adjustments, parts subject to normal wear and replacement and certain other items are excluded. This transferable "limited warranty" is free on all new 1999 Mazda vehicles sold and serviced in the United States. See your Mazda Dealer for details.

Complement the limited warranty on your new vehicle with the Mazda Extended Protection Plan, the only service agreement backed by Mazda. Ask your dealer for details.



7755 Irvine Center Drive, Irvine, CA 92618
For more information, visit us at www.mazdausa.com
or call toll-free 800-639-1000.

Information and illustrations in this brochure are based on the latest competitive and Mazda product information available at the time of publication. Some equipment shown is optional at extra cost; specific options may be available only in combination with other options. Specific combinations of colors, interiors, equipment or features may vary from time to time and by geographic area; colors in illustrations may vary from actual upholstery or paint colors due to reproduction and printing processes. Mazda reserves the right to make changes without notice in product content and price at any time.

©1998 Mazda North American Operations • Printed in U.S.A. 1/98 (275M)
Part No. 9999-92-0105-99



To capture the spirit of Mazda and our aspirations for the future, we proudly introduce our new symbol. The styled letter "M" evokes an image of wings in flight, our flight toward the future—a future borne of our quest to continuously grow and improve, made possible by the creativity, dedication, and enthusiasm of our employees.

This new symbol affirms Mazda's commitment to providing distinctive, high-quality products that offer unique driving pleasure, and a sales and service experience that will surpass your expectations and earn your confidence and loyalty.

We are dedicated to making the Mazda symbol, and the spirit it represents, a preeminent mark of excellence worldwide.



mazda[®]
Get in. Be moved.