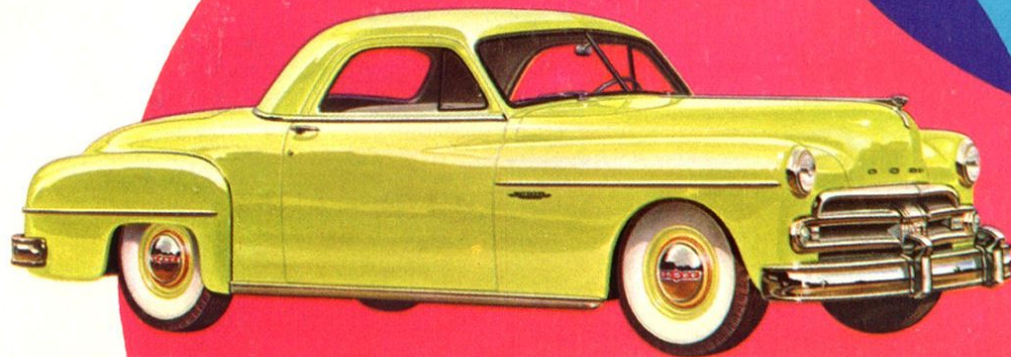
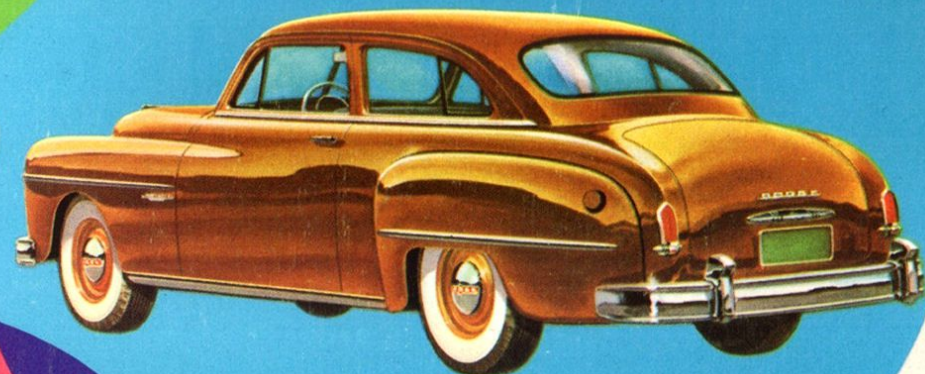
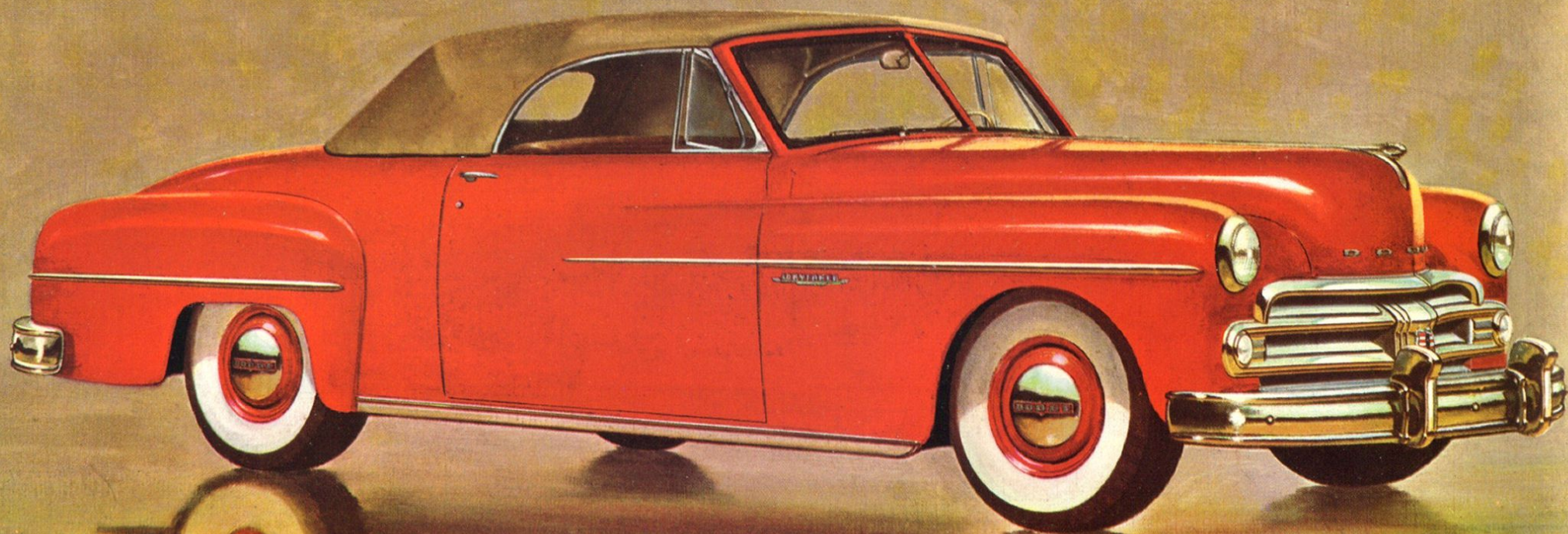


*the new* **DODGE MAVERICK**





*the Wayfarer Sportabout...*





# *favourite of all youthful America!*

HEED THE call of the open road in the sportiest car on the highway—the dashing Dodge Wayfarer Sportabout, America's lowest-priced full-size completely convertible open car! Here is a trim beauty packed with surprises. The durable fabric top on its lightweight aluminum frame can be raised or lowered quickly and easily with one hand. Available with chrome-trimmed safety glass side windows that roll up completely with one-and-one-half turns of the control handle to give a completely weather-proof car. And in addition to an amazingly large luggage compartment under the rear deck, there is ample room back of the seat to keep all

kinds of articles conveniently accessible as you drive.

You'll enjoy the relaxing comfort of the extra wide, soft-cushioned knee-level seat with legroom to spare . . . the festive play-time look of bright interior fittings and colorful textile leather upholstery. Out on the road, you'll thrill to the eager responsiveness of the big 103 horsepower Dodge "Get-Away" Engine . . . the smoothness of Dodge Fluid Drive. You'll be amazed at the Sportabout's nimble maneuverability . . . its ground-hugging roadability at high speed and on curves.





*the Wayfarer 6 passenger Sedan ...*





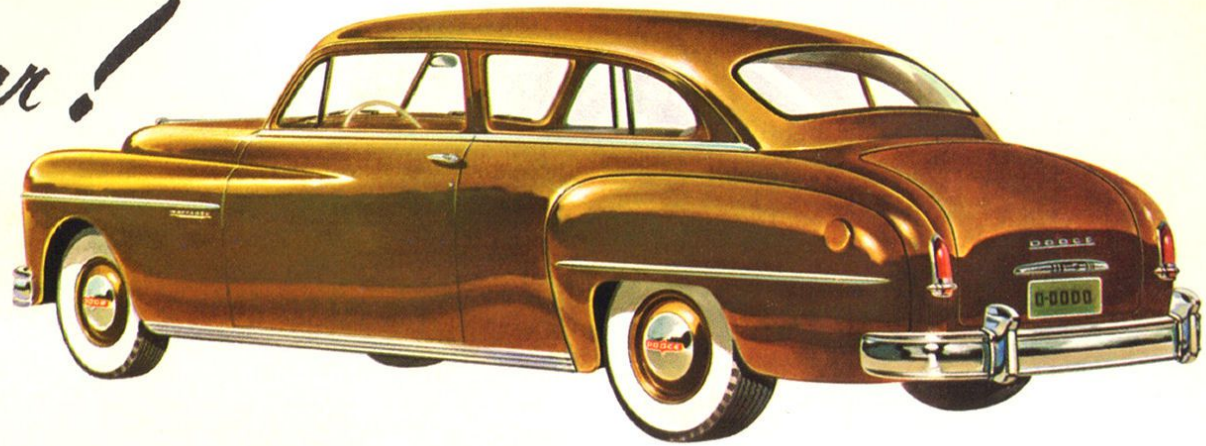
*economical family car!*

THIS 2-door Dodge Wayfarer Sedan has set new standards for car value across the country. With a distinctive styling all its own, the Wayfarer Sedan has ample accommodations for six adult passengers to travel in comfort on day-long trips. It's the perfect family car—yet it costs just a few dollars more than the lowest-priced cars!

Here is modern styling at its best—pleasing to look at with its low, sweeping lines and with interior dimensions that assure 6-passenger headroom, legroom and elbowroom. The two wide-opening doors are controlled from the front seat, a safety feature of importance to parents of young children. Ample space, too, is provided under the rear deck for a generously-sized luggage compartment. The spare tire is mounted at the side out of the way and can be rolled out easily without unloading the compartment.

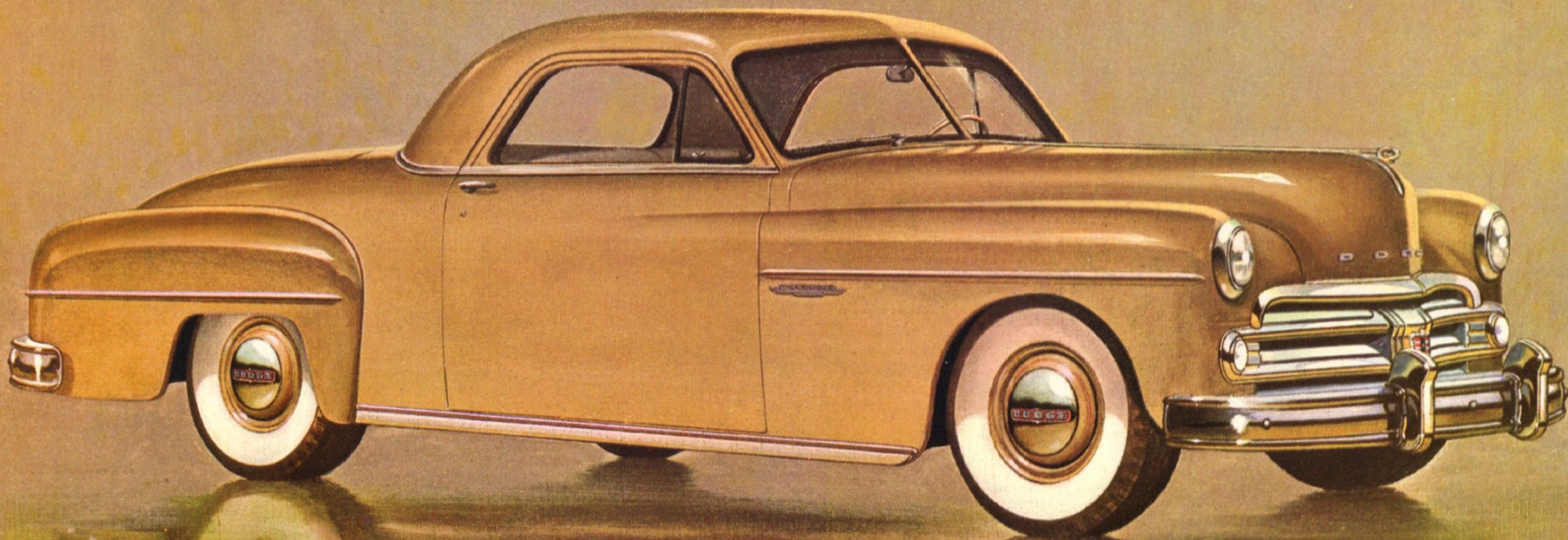
Here is a sturdy car with a solid, comfortable feel about it. One that promises long life with dependable trouble-free operation. Powered by the famous Dodge "Get-Away" Engine, the Wayfarer Sedan, like all Dodge cars, brings you the smooth riding and driving comfort of Dodge Fluid Drive at no extra cost. Truly, here is fine-car quality at a hard-to-beat price!

**STEP SMARTLY INTO COMFORT.** Big doors swing wide to disclose an inviting and comfortable interior. Front-seat back folds inward . . . greatly facilitating ease of entry and exit to the roomy rear seat compartment.





*the Wayfarer 3 passenger Coupe...*

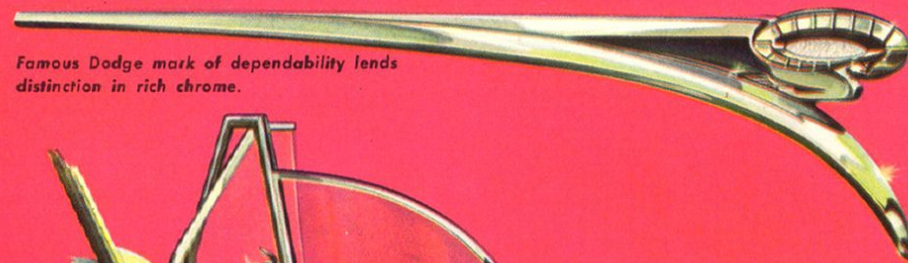
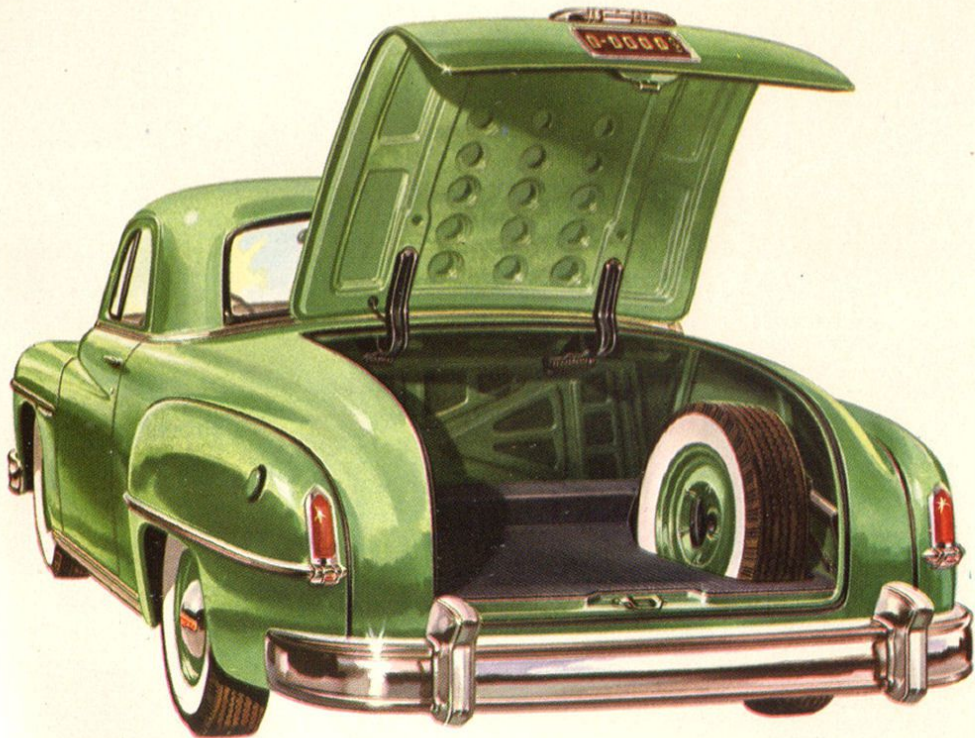




# unparalleled value!

THIS TRIM, good-looking Dodge Wayfarer Coupe is ideal for business purposes because it combines smartness and comfort with exceptional economy and maximum storage and luggage-carrying accommodations. With the lowest price tag in the Dodge line, this model is the favorite choice of many for a second family car. Its nimble 115" wheelbase makes it a pleasure to handle in congested traffic and easy to maneuver in tight parking spaces.

Three generously proportioned adults can ride comfortably on the wide knee-level seat with plenty of headroom, elbowroom and legroom. The spacious compartment back of the front seat is handy and convenient for all kinds of business and shopping purposes. In addition, there is an exceptionally large luggage compartment under the gracefully contoured lines of the rear deck lid. With all the ruggedness and dependability that has made Dodge famous you'll find this 3-passenger Wayfarer Coupe is packed with extra value features that make it an extremely economical car to own and operate!



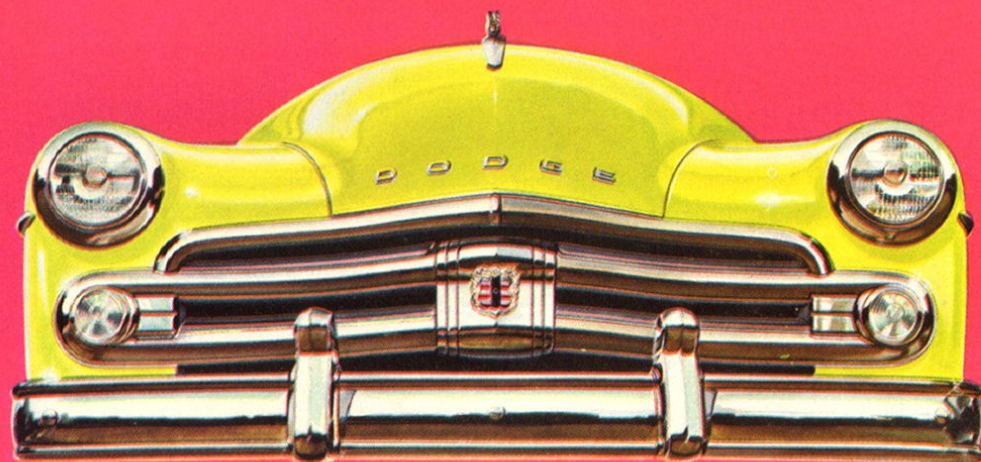
Famous Dodge mark of dependability lends distinction in rich chrome.



Door for Sportabout is highlighted by luxurious textile leather trim.



Smartly styled crank speeds window completely up or down in 1½ turns.



Attractive use of brilliant chrome gives a massive modern appearance to new Dodge grille.



# America's Finest Economy Car!

ON THE preceding pages Dodge presents America's finest full-size economy cars—the Dodge Wayfarer line. The new lower-priced Wayfarer cars have demonstrated their tremendous appeal to owners who are willing to forego some of the more luxurious fittings of the Dodge Coronet and Meadowbrook models while demanding the same qualities of performance and dependability that have made Dodge famous. Compare the specifications below with those for any other make of car. You'll find the Wayfarer model of your choice represents a bigger value—a car you can own and enjoy for *just a few dollars more than the lowest-priced cars!*

We urge you to drive a Dodge Wayfarer and experience its superior performance and riding qualities . . . its nimble maneuverability and ease of parking . . . the smooth driving comfort of Dodge Fluid Drive that cuts down on gear shifting . . . the soft, sure stops with Safe-Guard Hydraulic Brakes that require up to one-third less foot pressure to operate . . . and above all, the flashing acceleration and quick responsiveness of the big 103 horsepower Dodge "Get-Away" Engine. And while you are in our showroom, see the chart of attractive body colors and examine the fine quality of upholstery available on the Wayfarer line.



## Specifications

### DIMENSIONS:

Overall length, 196 $\frac{1}{4}$ "; wheelbase, 115"; height, no load, 64 $\frac{1}{4}$ "; outside width, 73".

### CHASSIS:

Box-type frame; front springs, coil; rear springs, semi-elliptic, 7 leaves. Worm and roller 2-tooth steering gear; hypoid rear axle, ratio, coupe and roadster, 3.73 to 1, 2-door, 3.9 to 1. Fluid Drive. Safety-Rim Wheels; Super-Cushion 6.70 x 15 tires on 4 $\frac{1}{2}$ " rims. Safe-Guard Hydraulic Brakes with 2 cylinders in front wheels and CYCLEBOND linings; lining area 157.78 sq. in. Parking brake on propeller shaft independent of service brakes. Airplane-type shock absorbers.

### ENGINE:

L-Head 6-cylinder; bore and stroke, 3 $\frac{1}{4}$ " x 4 $\frac{3}{8}$ "; displacement, 230.2 cubic inches; 190 lb. ft. torque at 1200 rpm; 103 h.p. at 3600 rpm. Compression ratio, 7.0 to 1. Full pressure lubrication to main, connecting

rod and camshaft bearings. Silent timing chain; water distributing tube; exhaust valve seat inserts.

### FUEL SYSTEM:

Tank capacity, 17 gals. with Oilite self-cleaning filter, oil bath air cleaner. High capacity fuel pump; automatic choke; thermostatic manifold control.

### LUBRICATION:

Gerotor-type oil pump; engine capacity, 5 qts.

### COOLING SYSTEM:

Thermostatic control, capacity, 15 qts. without heater.

### ELECTRICAL SYSTEM:

Large 40 amp. generator; neoprene-jacketed ignition cable; resistor-type spark plugs with wide .035 gap; 15-plate 105 amp. hr. battery; temperature compensated voltage regulator; ignition cable armored to cowl; vacuum-type windshield wipers. One horn.

### BODY:

2-door seat cushion width, front 58", rear 57 $\frac{3}{4}$ ". Leg room, front 38 $\frac{1}{2}$ " to 42 $\frac{3}{8}$ ", rear 36 $\frac{1}{8}$ " to 39 $\frac{1}{2}$ "; seat height from floor, 14 $\frac{5}{8}$ ", rear 14 $\frac{3}{4}$ "; head room, front 38 $\frac{1}{4}$ ", rear 37". Front seat adjustable, horizontal 5", vertical 1 $\frac{1}{8}$ ". External door lock on right-hand front door, except Sportabout. One sun visor.

*Specifications Subject to Change Without Notice.*