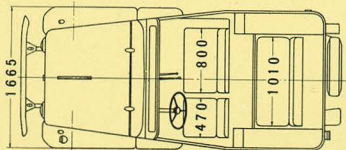
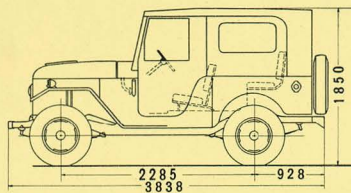


DIMENSIONS IN MILLIMETERS



TOYOTA LAND CRUISER



ENGINEERED TO MATCH YOUR JOB REQUIREMENTS

TOYOTA LAND CRUISER is entirely a different 4-wheel drive from other conventional counterparts. Bigger horsepower and sturdier construction.

A modern-day mechanical work-horse, essential to practical all major industries of today. Offering 2 or 4-wheel operation. In 4-wheel drive, the engine power is transmitted to all four wheels at once rather than to the rear wheels alone, thus, utilizing the entire weight of the vehicle for maximum traction. A special low-gear range provides extra pulling power, when needed.



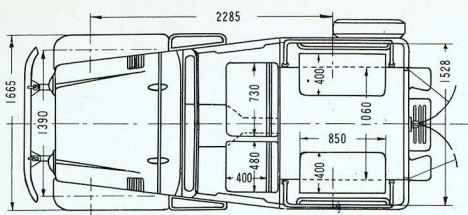
Greater comfort, safety and convenience. Easy riding full-width seat accommodates three persons comfortably. Large combined instrument panel, scientifically grouped controls for convenience and safety.....easy to reach, easy to operate. Combined ignition and starting switch.

Newly designed, larger windshield. The entire front windshield folds on strong hinges. New streamlined hood offers increased visibility. The newly designed top has side walls that fit flush with the "Land Cruiser" body to keep out weather, and can be removed in a matter of a few minutes.





TOYOTA 4-WHEEL-DRIVE "LAND CRUISER"



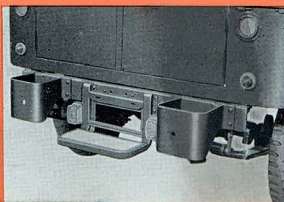
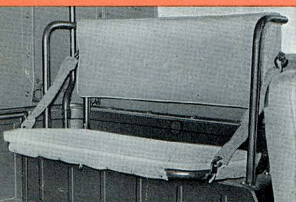
When off-highway, going gets tough and traction is a big problem, Toyota 4-wheel-drive Land Cruiser gets through. And for speed on the highway, they perform equally as well with the front axle disengaged.

Famous Toyota "F" engines provide low-cost, peak performance, driver comfort, all-around visibility and safety, plus heavy-duty engineering makes the 4x4 an unmatched combination of values.

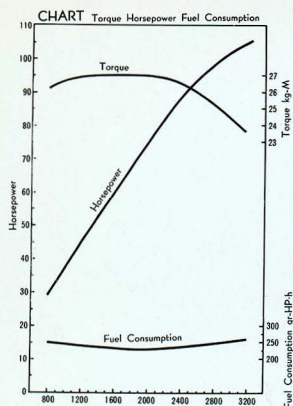
The Toyota 4x4 is the only motor vehicle of its kind and size in regular production today. Compare the features drive it—then compare the price.

STANDARD LAND CRUISER
WITH DROP TYPE REAR GATE

PERSONNEL AND CARGO CARRIER, WITH SWING-OUT REAR DOORS

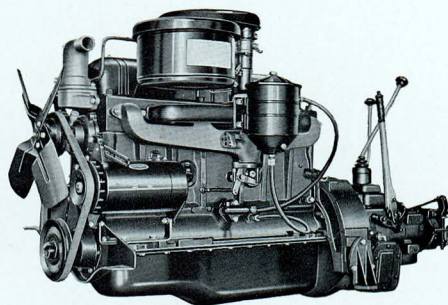


A most dependable means of transportation. Tremendous high speed can be achieved from regular 2-wheel-drive on highways and when off-the-road, mighty pull can be derived from the perfectly balanced and engineered 4-wheel-drive Land Cruiser.



FAMOUS TOYOTA "F" ENGINE

GREATER USABLE POWER



Increased compression ratio provides greater economy and more horsepower, resulting in higher top speed, faster acceleration for passing, and improved hill climbing and grade ability. Greater durability and smoother, quieter operation result from important new features.



TOYOTA Advance-Design rugged-duty chassis features strength where it is needed. Frames, redesigned for increased strength, have a wide margin of safety.

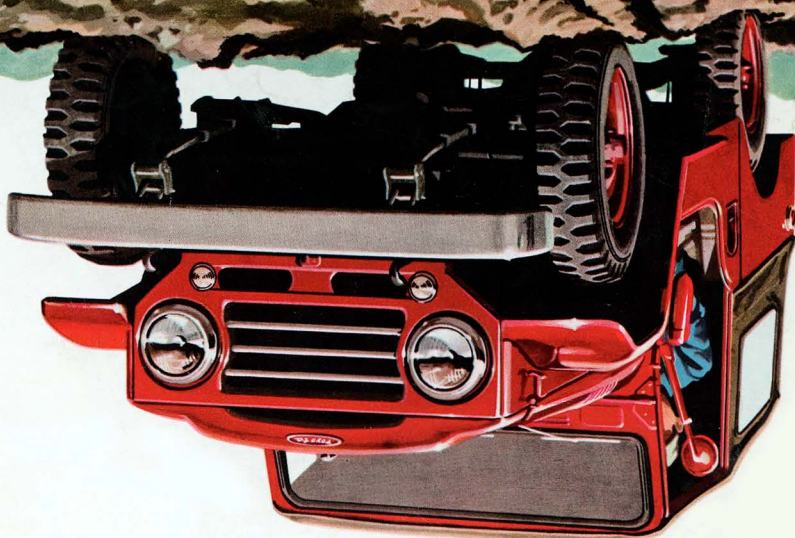
OPTIONAL EQUIPMENT AT NO EXTRA COST

Oil bath type air cleaner, for desert or dusty regions.
Oversize fan & shrouds, for tropical or high altitude operation.

Speedometer in miles (standard in kilometers).

OPTIONAL EQUIPMENT AT EXTRA COST

Pintle hook
Trailer socket
Oil pan reinforcement
Wheel (hub) caps
Canvas doors
Steel doors
Power take-off
Winch
Fog-lamps
Locking cap for gas tank



105 HP

TOYOTA LAND CRUISER

SPECIFICATION

VEHICLE WEIGHT RATING 1,425 kg. (3,142 lb.)

GROSS VEHICLE WEIGHT RATING:

Standard body with 4 passengers

(@ 75×4)..... 1,725 kg. (3,804 lb.)

Cargo/Personnel carrier with 6 passengers

(@ 75×6)..... 1,875 kg. (4,134 lb.)

Overall length, with front bumper

(OAL)..... 3,838 mm. (151.11 in.)

Tread—front wheels 1,390 mm. (54.72 in.)

—rear wheels 1,350 mm. (53.15 in.)

Ground clearance—front 210 mm. (8.27 in.)

—rear 210 mm. (8.27 in.)

Overall width—front (with fender end)

1,665 mm. (65.55 in.)

Overall height 1,850 mm. (72.84 in.)

VEHICLE PERFORMANCE:

Max. speed..... 100 km. hr. (62 MPH)

Min. turning radius..... 5,300 mm. (208.66 in.)

Braking distance (50 km./hr. 18,000 mm. (708.66 in.)

FRAME: Pressed steel channel, girder type, 132×50×4.5 mm. (5.20×1.97×0.18 in.)

ENGINE: Six cylinders, valve-in-head type. Bore and stroke, 90 mm. (3-35/64 in.)×101.6 mm. (4 in.); Displacement, 3,878 cc. (236.65 cu. in.); Compression ratio, 6.8; Brake HP, 105 at 3,200 r.p.m.; Maximum torque, 27 kg.-m. (195 ft.-lb.) at 2,000 r.p.m.

LUBRICATION: Full-pressure feed to all main and connecting-rod bearings, camshaft and timing gears. Gear-type, gear-driven oil pump. Specially treated paper oil filter. Oil pan capacity, 4.7 lt. (4.9 qt.)

IGNITION: 12-volt, centrifugal and vacuum control, full-automatic distributor.

GENERATOR: 12-volt, 18-ampere, shunt-wound, belt-driven.

BATTERY: 12-volt, 55 amp-hour (20 hr. rating).

STARTING MOTOR: 12-volt, maximum torque, 1.4 kg.-m. (8.4 lb.-ft.).

FUEL SYSTEM: Diaphragm-type fuel pump driven from camshaft. Gasoline filter, 57 lt. (15 U.S. gal.) tank.

CLUTCH: Diameter, 275 mm (10.83 in.), dry single-plate, with centrifugal weights & coil springs.

TRANSMISSION: Four speed forward, one reverse. Third and top gears are synchro-mesh.

TRANSMISSION REDUCTIONS: First, 5.41:1; second, 3.12:1; third, 1.77:1; fourth, 1:1; reverse, 5.44:1.

AXLES: Four wheel drive. Full floating (front) and semi-floating (rear) type, banjo type steel housing; differential and front wheel bearings are tapered rollers and rear wheel bearings are rollers. Pinion, straddle-mounted, on roller bearings. Reduction ratio, 4.11:1.

*STEERING GEAR: Hindley worm and sector-roller type. Gear ratio, 23:1.

BRAKES: Service: 4-wheel, hydraulic, internal-expanding type.

Hand: Hand operated center brake.

SPRINGS: Front and rear semi-elliptic. Front, 1,100 mm.×70mm.×6mm.—6 leaves (43.31 in.×2.76 in.×0.24 in.—6); Rear, 1,300mm.×70mm.—7 leaves (51.19 in.×2.76 in.×0.24 in.—7).

STANDARD TIRES: 6.00—16, 6—ply, grip (Snow and Mud).

CONTROLS: Throttle, choke, light and directional control knobs on instrument panel.

ACCESSORIES: Standard: Canvas top, safety straps, 4-shock absorbers (front and rear), vacuum type windshield wipers, directional (flasher type) indicators, one spare tire, hand tool set.

*Left hand drive also available.

(Manufacturer reserves the right to make any changes or improvements without previous notice.)

TOYOTA MOTOR SALES CO., LTD.

NO. 3, 2-CHOME, HATCHOBORI, CHUO-KU, TOKYO, JAPAN.

CABLE ADDRESS: JIDOSHA TOKYO

Printed by
Chiyoda off-set Co., Ltd. in Tokyo