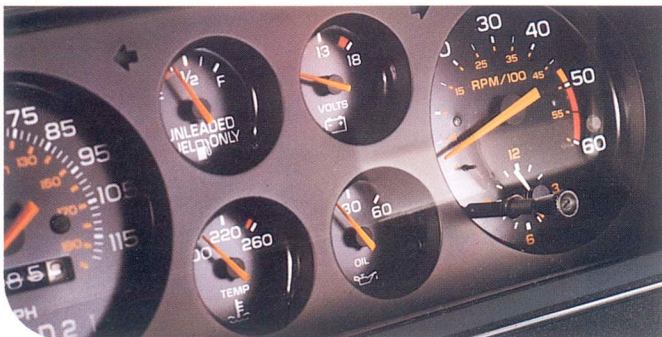


1983  
MONTE CARLO  
SS  
SPORT COUPE





# ***CHEVY SS TRADITION COMES ALIVE...***

**Combining an exciting, sporty front end design  
with impressive handling and performance capabilities.**

## **THE 1983 CHEVROLET MONTE CARLO SS IS EQUIPPED WITH THESE STANDARD FEATURES:**

- 5.0L 4 Bbl. V8 Engine
- F41 Sport Suspension
- 3.42:1 Performance Axle
- Dual Exhaust System
- Special 15 X 7 Rally Wheels
- P215/65-15 GT White Letter Goodyear Tires
- Gage Package with Tachometer
- Automatic Transmission
- Rear Spoiler
- Special SS Stripes
- Special SS Black Moldings and Grille
- Sport Mirrors, Left Hand Remote, Right Hand Manual

**EXTERIOR COLORS:** White or Dark Blue Metallic only

**INTERIOR TRIM:** Special White and Blue Seats and Door Trim

## **AVAILABLE POPULAR OPTIONS:**

- Air Conditioning
- Tinted Glass
- Automatic Speed Control with Resume Speed
- Comfortilt Steering Wheel
- Power Windows
- Power Door Lock System
- Power Trunk Opener
- Antenna (black) — Requires Radio
- Electric Rear Window Defogger
- Intermittant Windshield Wiper System
- Halogen Headlamps (High Beam)

And many more. Ask your Chevrolet dealer  
for a complete list, including GM-Delco Radio  
Equipment.

**NOTE:** Product descriptions are based on the latest  
information available at the time of  
publication. The right is reserved to make  
changes at any time without notice in colors,  
materials, equipment and specifications.

