

SIENNA 08



moving forward



EVERY DAY IN INDIANA, PARENTS LIKE YOU ASSEMBLE  
EACH SIENNA. THEY KNOW THAT WHEN YOU PUT YOUR  
KIDS INTO A SIENNA, YOU PUT THEM IN THEIR HANDS.  
IT'S A TRUST WE DON'T TAKE LIGHTLY. THE 2008  
TOYOTA SIENNA. MOVING FORWARD.



Limited shown in Silver Shadow Pearl





Before we put the first Sienna together, we met with families like yours. We rode along to practices, talked over coffee — discovered all the things you loved, or wished you could change, about minivans. So we gave Sienna versatile seating that changes with your life. We built it with side curtain airbags<sup>1</sup> in all three rows. And gave it thoughtful touches for you. We think you'll find in Sienna exactly what you're looking for. We built it with you in mind.

1. See footnote 19 in Features section.



Grandpa walked to school in the snow and we had the back of station wagons. What will our children remember? An available rear-seat DVD entertainment system<sup>1</sup> with 9-inch display, 115V power outlets,<sup>2</sup> three-zone automatic climate control?<sup>2</sup> Standard power sliding side windows, auxiliary audio jack, available satellite radio capability,<sup>3</sup> and 14 cup and bottle holders? In Sienna, kids have it good. Maybe too good.



#### TILT/TELESCOPIC STEERING WHEEL

Sienna Limited features a tilt/telescopic steering wheel. It's leather-wrapped, too, with wood-grain-style trim. Most importantly, because your eyes need to be on the road, there are fingertip controls for the audio system.



#### DVD NAVIGATION SYSTEM<sup>4,5</sup> WITH BACKUP CAMERA<sup>6</sup>

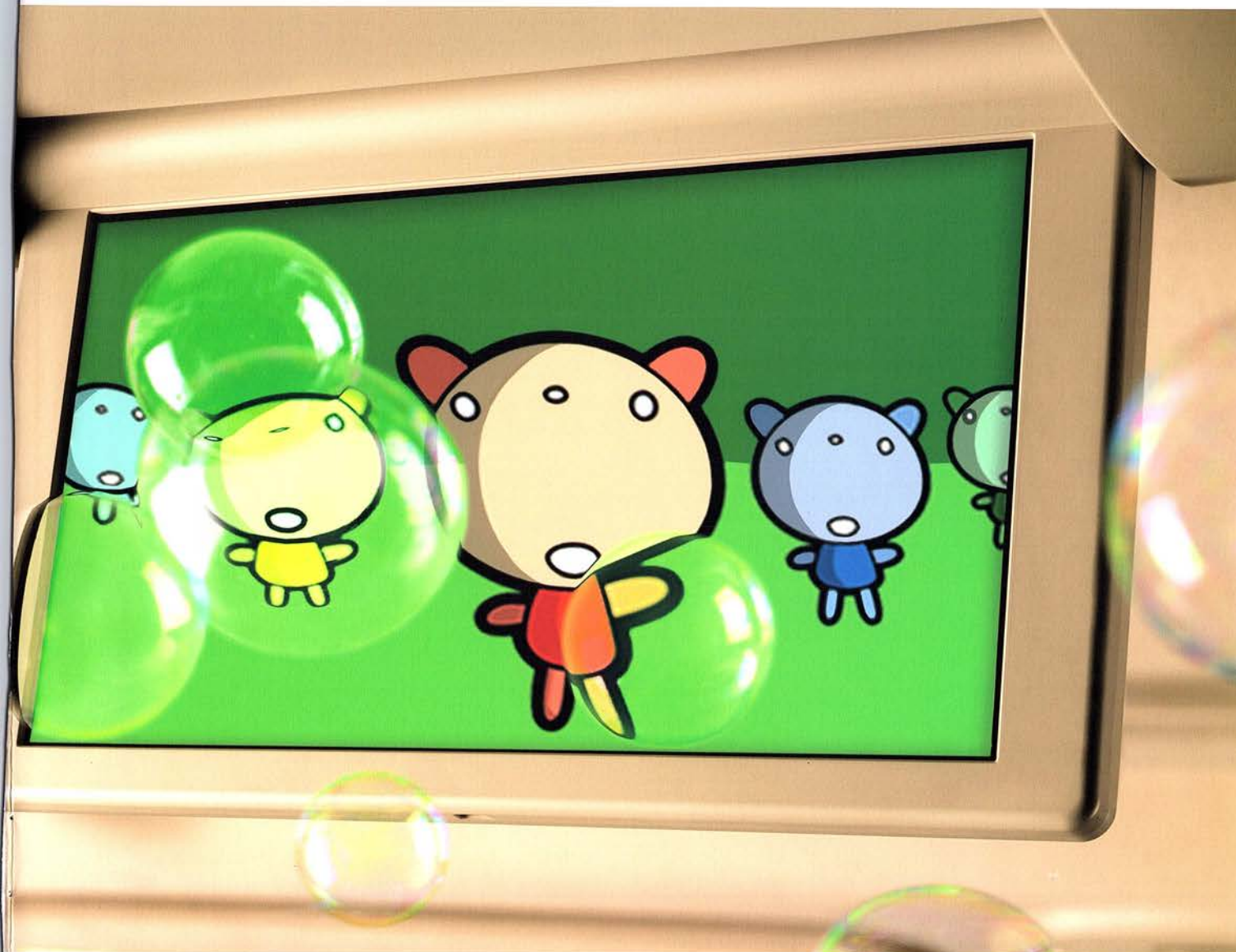
The available touch-screen DVD navigation system includes a backup camera. Put Sienna in reverse, and it automatically shows what the camera sees immediately behind you. Controls for the JBL Synthesis<sup>®</sup> 10-speaker audio system are also on the touch-screen and Bluetooth<sup>®</sup> technology is built into the system for hands-free phone capabilities.





#### AUXILIARY AUDIO JACK

What better way to know what your kid is listening to? Every Sienna comes with a standard auxiliary audio jack.



#### REAR-SEAT DVD ENTERTAINMENT SYSTEM<sup>1</sup>

Sienna's available rear-seat DVD entertainment system with 9-inch display includes wireless headphones.<sup>2</sup> So what you listen to in the front seat is entirely up to you.



iPod<sup>®</sup> accessory not included. iPod<sup>®</sup> is a registered trademark of Apple Inc.



As a parent, you adjust to what comes up. So does the Sienna interior. Every 8-passenger Sienna model comes standard with a Front and Center™ second-row seat. Slide it forward to put your youngest within easy reach of the front passenger seat. Every single Sienna comes standard with the 60/40 Split & Stow 3rd Row™ seat. And the indexing second-row captain's chairs are removable. With the versatile seating of Sienna, the kids come first. And so do you.



Limited interior shown in Stone with accessory floor mats.

**POWER FOLDING/ADJUSTABLE 60/40 SPLIT & STOW 3RD ROW™ SEAT¹**

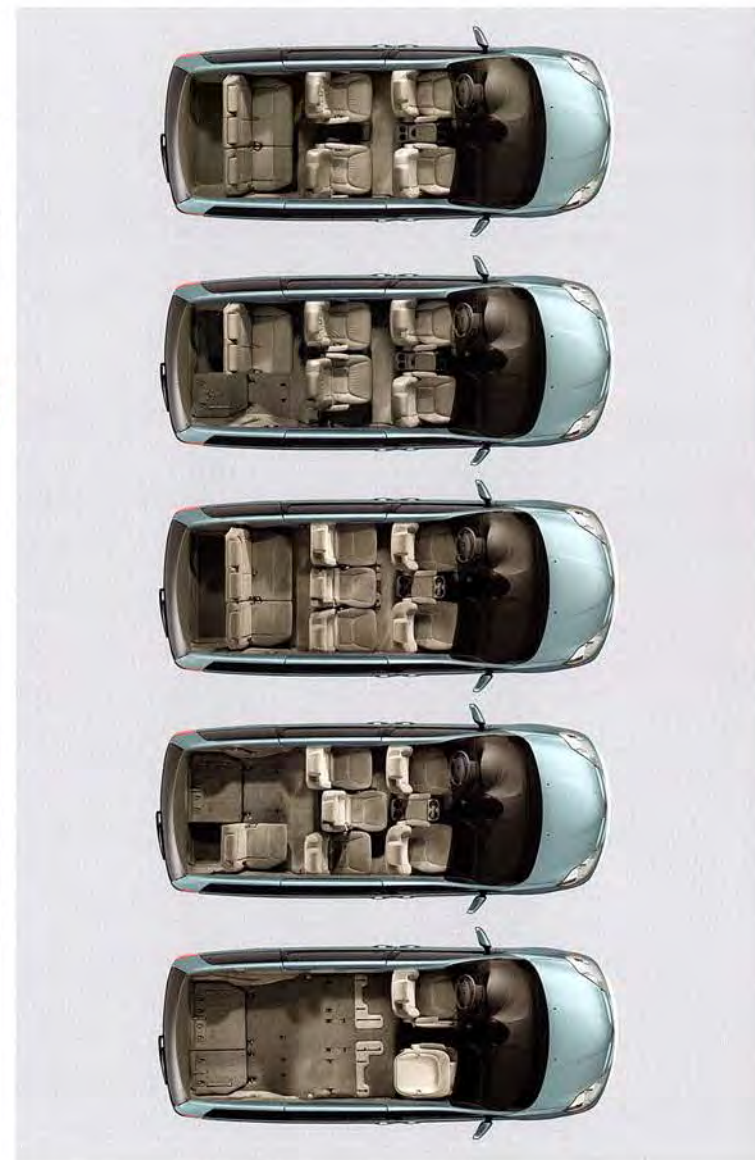
Press a button and Sienna's available power folding/adjustable 60/40 Split & Stow 3rd Row™ seat automatically transforms itself to suit the situation. Keep two kids strapped in and fold 40%; or have one passenger and fold 60% for more storage; or fold the entire third row into the floor in two smooth movements.





#### SEVEN OR EIGHT PASSENGERS?

Opt for a 7-passenger version with captain's chairs that can move together or the 8-passenger model with the Front and Center™ second-row seat. There's a Sienna for all the combinations your life will take.



#### FRONT AND CENTER™ SECOND-ROW SEAT

On 8-passenger Sienna models, it's easy to seat a child within reach of the front passenger seat, thanks to the sliding Front and Center™ second-row seat.

SIENNA VERSATILITY



Between pushing a week's worth of groceries across the parking lot and keeping a tight grip on your kids, you could sure use a spare hand. Sienna lends lots of help at every turn. Simply click on the keyless remote and the doors obey, thanks to an available power rear door<sup>1</sup> and available dual power sliding doors.<sup>2</sup> Now if they just had a button for "bath time."



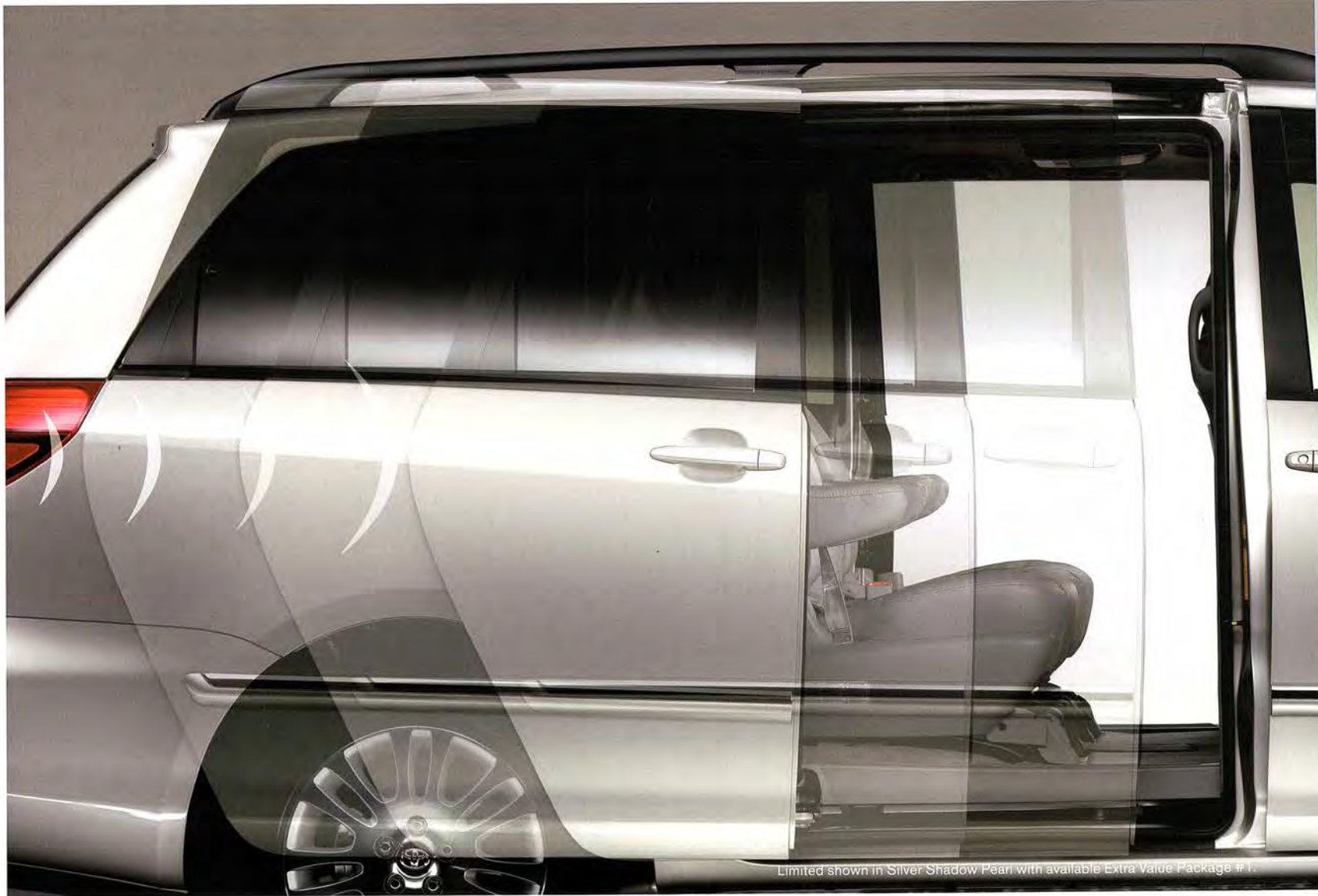
XLE shown in Silver Shadow Pearl with available Extra Value Package #4.

#### POWER REAR DOOR<sup>1</sup>

The only thing better than Sienna's low lift-over height and deep storage well behind the third row is the available power rear door.







Limited shown in Silver Shadow Pearl with available Extra Value Package #1.

#### REMOTE KEYLESS ENTRY SYSTEM

When equipped, Sienna's keyless remote lets you electrically open either side door or the power rear door – and close them with one touch, too.

#### DUAL POWER SLIDING DOORS

Sometimes one side is safer for loading your children than the other; now you have control. With the dual power sliding doors, you can open either side door, one at a time.

1. Standard on XLE and Limited. Not available on CE and LE. 2. Standard on XLE and Limited. Available on LE. Not available on CE.

SIENNA CONVENIENCE



Toyota's Star Safety System™ is a combination of five safety features standard on every Sienna: Vehicle Stability Control (VSC),<sup>1</sup> Traction Control (TRAC), Anti-lock Brake System (ABS), Electronic Brake-force Distribution (EBD) and Brake Assist.<sup>2</sup> And with available AWD, you'll have the confidence that comes from knowing you're making the most of Sienna's power and agility.



#### MUDDY SURFACE

If the driver applies excessive pressure to the accelerator, Traction Control (TRAC) helps prevent wheel slippage on all kinds of surfaces.

#### GRAVEL SURFACE

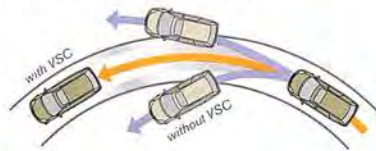
On almost any road surface, standard Electronic Brake-force Distribution (EBD) helps optimize the amount of brake force sent to each wheel. Sensors read the distribution of cargo and passengers in Sienna and send an appropriate brake force to each wheel.



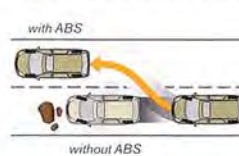
## VEHICLE STABILITY CONTROL (VSC)<sup>1</sup> AND ANTI-LOCK BRAKE SYSTEM (ABS)

Vehicle Stability Control (VSC) counteracts front or rear wheelslip during turns to help restore driving control. The Anti-lock Brake System (ABS) avoids wheel lockup and helps maintain steering control.

Possible Scenario:  
Vehicle Stability Control (VSC)



Possible Scenario:  
Anti-lock Brake System (ABS)



### WET SURFACE

The computer-controlled Anti-lock Brake System (ABS) modulates brake pressure when braking hard or when braking on a slippery surface, to help avoid wheel lockup and help maintain steering control.

### SLUSHY SURFACE

In winter conditions, every Sienna comes prepared: Vehicle Stability Control (VSC)<sup>1</sup> helps prevent the vehicle from slipping sideways as a result of losing traction while cornering.

### ECONOMICAL – AND POWERFUL

Whether stretching that gallon with an EPA-estimated 23 mpg hwy,<sup>3,4</sup> or merging onto the freeway with a full carpool, Sienna's 266-hp 3.5-liter DOHC 24-valve dual independent VVT-i V6 engine does it all, automatically adjusting valve timing for both economy and power.



You put a roof over their heads. How about we put airbags on three sides? Standard on every Sienna is the Advanced Airbag System<sup>1</sup> with driver and front passenger airbags, front seat-mounted side airbags and side curtain airbags that cover all three rows. Also standard is an Anti-lock Brake System (ABS) with Electronic Brake-force Distribution (EBD) and Brake Assist.<sup>2</sup>



#### "SEES" IN THE DARK

From front to back, Sienna encompasses a comprehensive attitude toward safety, including (A) available front and rear Intuitive Parking Assist,<sup>3,4</sup> (B) available High Intensity Discharge (HID) headlamps,<sup>5</sup> (C) front energy-absorbing crumple zone and (D) energy-absorbing steering column.

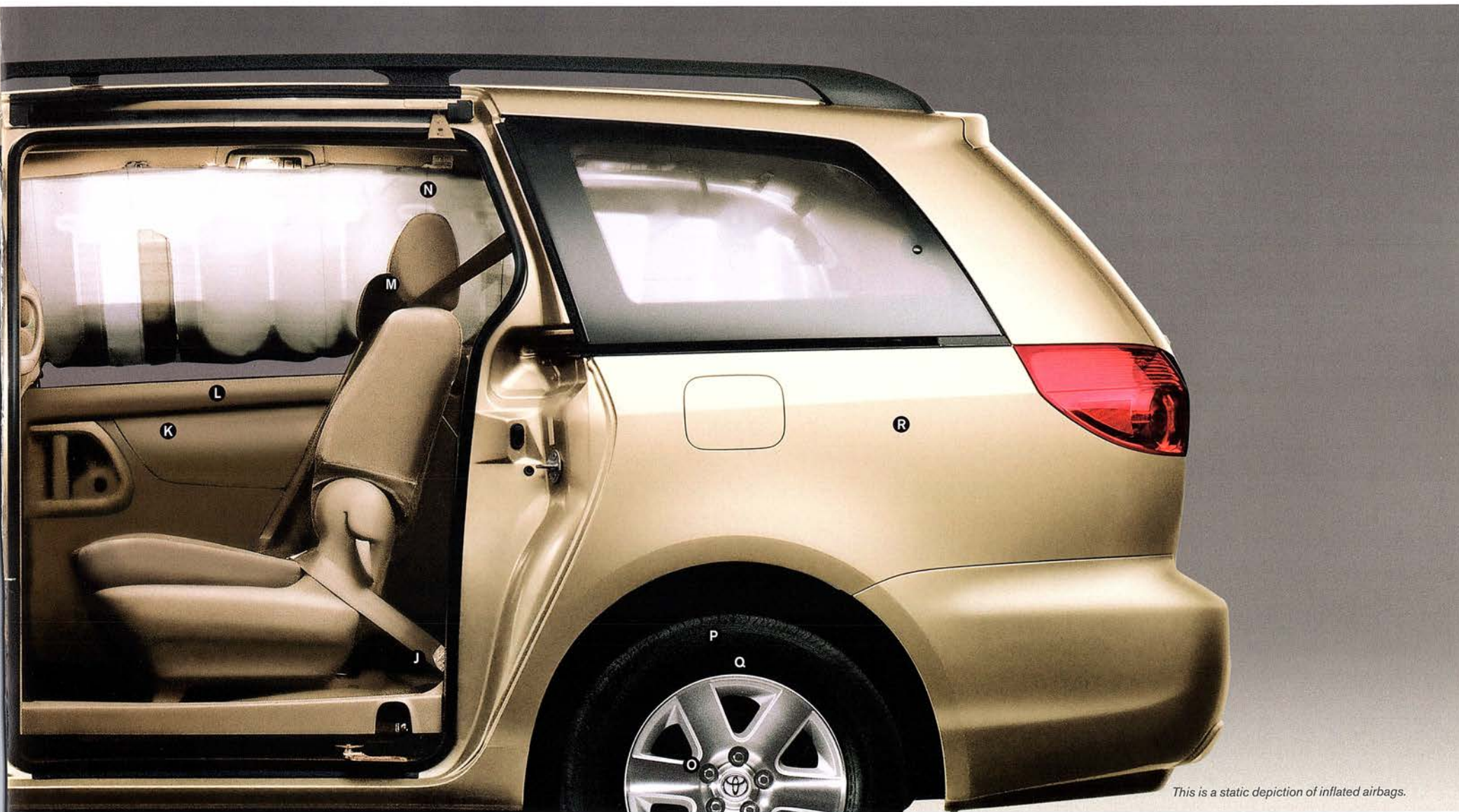
#### VAN OF STEEL

Peel back Sienna and you'll find more safety technology, like the use of (E) reinforced steel in a unitized body with high-tensile-strength steel body panels, (F) front seat-mounted side airbags and (G) driver and front passenger Advanced Airbag System.<sup>1</sup>

#### READY FOR WINTER WONDERLAND

For colder climates, (H) available color-keyed power folding, memory, heated outside mirrors with puddle lamps and turn-signal indicators<sup>6</sup> and (I) an available windshield wiper de-icer grid help keep your view clear.





*This is a static depiction of inflated airbags.*

#### KIDS COME FIRST

Your passengers are also looked after with such features as (J) child seat lower anchors and top tether anchors (LATCH) for four seating positions, (K) side-impact door beams, (L) available dual power sliding doors<sup>7</sup> and rear door<sup>8</sup> with jam protection, (M) 3-point seatbelts in all seating positions and (N) three-row side curtain airbags.<sup>1</sup>

#### BRAKING THAT'S QUICKER THAN YOU ARE

Sienna's safety is inside and out, including (O) an Anti-lock Brake System (ABS) with Electronic Brake-force Distribution (EBD) and Brake Assist,<sup>2</sup> (P) Tire Pressure Monitor System (TPMS)<sup>9</sup>, (Q) available All-Wheel Drive (AWD) with run-flat tires,<sup>10</sup> and (R) rear energy-absorbing crumple zone.

7. Standard on XLE and Limited. Available on LE. Not available on CE. 8. Standard on XLE and Limited. Not available on CE or LE. 9. See footnote 21 in Features section. 10. See footnote 5 in Specifications section.



## 08 FEATURES<sup>1</sup>


EXTERIOR	CE	LE	XLE	LIMITED		CE	LE	XLE	LIMITED
Chrome accents on front grille, rear license plate garnish and body side moldings	-	-	-	S	Color-keyed power folding, electrochromic, memory, heated outside mirrors with puddle lamps and turn-signal indicators	-	-	P	S
Color-keyed bumpers, door handles and body side moldings	S	S	S	S	Dual sliding doors with power windows	S	S	-	-
Color-keyed rear license plate garnish	-	S	S	-	Dual power sliding doors with power windows and power rear door	-	-	S	S
Aerodynamic multi-reflector headlamps with auto-off feature	S	S	-	-	Dual power sliding doors with rear door electronic locking system	-	P	-	-
Auto on/off headlamps	-	-	S	S	Passenger-side power sliding door with driver-side sliding door and rear door electronic locking system	-	P	-	-
High Intensity Discharge (HID) headlamps with manual level control	-	-	-	P	High Solar Energy-Absorbing (HSEA) glass on windshield and driver and front passenger windows	-	S	S	S
Fog lamps	-	-	P	S	Privacy glass	-	S	S	S
Foot pedal parking brake	S	S	S	S	Roof rack	P	S	S	S
16-in. steel wheels with full wheel covers with P215/65R16 tires	S	S	-	-	Rear bumper protector	-	S	S	S
16-in. 6-spoke aluminum alloy wheels with P215/65R16 tires	-	O <sup>2</sup>	S <sup>2</sup>	-	Remote keyless entry system	S	S	S	S
17-in. 7-spoke aluminum alloy wheels with P225/60R17 tires	-	P <sup>3</sup>	O <sup>3</sup>	S <sup>3</sup>	Washer-linked variable intermittent front and intermittent rear windshield wipers	S	S	S	S
<b>Towing Prep Package<sup>4</sup></b> – 3500-lb. towing capacity with heavy-duty radiator, heavy-duty fan, 150-amp alternator and power-steering oil cooler	O	O	O	O	Heavy-duty rear window defogger with timer	S	S	S	S
Power black outside mirrors	S	-	-	-	Power tilt/slide moonroof with sunshade	-	-	P	S
Power heated black outside mirrors	-	S	-	-					
Color-keyed power heated outside mirrors	-	-	S	-					
INTERIOR									
Wood-grain-style interior trim	-	-	S	S	Leather-wrapped tilt/telescopic steering wheel	-	-	S	-
Chrome-trimmed door handles and driver and front passenger air vents	-	-	S	S	Leather-wrapped tilt/telescopic steering wheel with wood-grain-style trim	-	-	-	S
Chrome-accented transmission shift plate	S	S	S	S	Steering wheel-mounted audio controls	-	S	S	S
Driver's seat with manual adjustable lumbar support	S	S	-	-	Steering wheel-mounted audio and Bluetooth <sup>®8</sup> controls	-	P	P	S
Front passenger seatback with fold-flat function	-	S	-	-	Power front and sliding door windows with retained-power feature	-	S <sup>9</sup>	S <sup>9</sup>	S <sup>9</sup>
6-way adjustable driver's and 4-way front passenger captain's chairs with armrests and height-adjustable headrests in all seating positions	S	S	-	-	Rear privacy glass with power-operated rear quarter windows	-	S	S	S
8-way power-adjustable driver's and 4-way front passenger captain's chairs with height-adjustable headrests	-	P	-	-	Day/night rearview mirror	S	S	S	-
8-way power-adjustable driver's and 4-way front passenger power seats with height-adjustable headrests	-	-	S	-	Auto-dimming electrochromic power outside mirrors and inside rearview mirror	-	-	P	S
8-way power-adjustable driver's seat with 2-person memory function and 4-way front passenger power seat with height-adjustable headrests	-	-	S	-	Overhead console with conversation mirror	S	S	S	S
8-way power-adjustable driver's seat with 2-person memory function and 4-way front passenger power seat with height-adjustable headrests	-	-	P	S	Driver and front passenger sun visors with vanity mirror	S	-	-	-
Removable second-row modular seating with Front and Center <sup>™</sup> middle-seat feature (8-passenger models only)	S	S <sup>5</sup>	-	-	Dual illuminated visor vanity mirrors	-	S	S	S
Removable second-row indexing seats with armrests (7-passenger models only)	S	S	S	S	Overhead console multi-information display with outside temperature, compass, current and average fuel consumption, fuel range and HomeLink <sup>®10</sup> universal transceiver	-	P	S	S
60/40 Split & Stow 3rd Row <sup>™</sup> seat	S	S	S	S	Door-mounted armrest storage compartment	S	S	S	S
Power folding/adjustable 60/40 Split & Stow 3rd Row <sup>™</sup> seat	-	-	-	O <sup>6</sup>	Four map pockets	S	S	S	S
Heated driver and front passenger seats with adjustable temperature control	-	-	P	S	CD compartment	S	S	S	S
Unique CE fabric-trimmed interior with silver-tone trim	S	-	-	-	Coin pocket and sunglasses holder	S	S	S	S
Unique LE fabric-trimmed interior with silver-tone trim	-	S	-	-	Garage door opener storage bin	S	S	-	-
Unique XLE fabric	-	-	S	-	Front passenger seat under-seat storage bin	-	S	-	-
Leather-trimmed interior	-	-	P	S	Folding tray table between front seats	S	S	-	-
Dynamic Laser Cruise Control <sup>7</sup>	-	-	-	P	Removable center console with storage	-	-	S	S
Cruise control	P	S	S	S	Upper glove box and lockable lower glove box	S	S	S	S
Urethane tilt/telescopic steering wheel	S	S	-	-	Five assist grips and four coat hooks	S	S	S	S
					Ten cup holders <sup>11</sup>	S	S	S	S



## 08 FEATURES (continued)

INTERIOR (continued)	CE	LE	XLE	LIMITED		CE	LE	XLE	LIMITED
Four bottle holders	S	S	S	S	AM/FM with single-disc in-dash CD player, MP3/WMA capability, six speakers and mast antenna	S	-	-	-
Three 12V power outlets	S	S	S	S	AM/FM with 6-disc in-dash CD changer, satellite radio capability, <sup>12</sup> MP3/WMA capability, six speakers and mast antenna	-	S	S	-
Two 115V outlets	-	P	P	P	JBL Synthesis® AM/FM with 6-disc in-dash CD changer, satellite radio capability, <sup>12</sup> MP3/WMA capability, Bluetooth <sup>®</sup> wireless technology, ten speakers and two in-glass antennas with FM diversity reception	-	P	P	S
Automatic door locks	S	S	S	S	JBL Synthesis® AM/FM with 4-disc in-dash CD changer, satellite radio capability, <sup>12</sup> MP3/WMA capability, DVD navigation system <sup>13</sup> with backup camera, <sup>14</sup> Bluetooth <sup>®</sup> wireless technology, ten speakers and two in-glass antennas with FM diversity reception	-	-	P <sup>15</sup>	P <sup>15</sup>
Electric soft-touch rear door release	S	S	S	S	Rear-seat DVD entertainment system with 9-inch display, two 115V outlets and two wireless headphones <sup>16</sup>	-	P	P	P
Speedometer, tachometer, coolant temperature and fuel gauges with light blue illumination; LCD odometer and twin tripmeter	S	-	-	-	Auxiliary audio jack	S	S	S	S
Optitron meters with speedometer, tachometer, coolant temperature and fuel level gauges with light blue illumination; LCD odometer and twin tripmeter	-	S	S	S	Illuminated entry – includes front and rear personal lights located on all outboard seating positions, cargo area light and courtesy lights for front and sliding doors	S	S	S	S
Airbag, seatbelt, low-fuel level, door-ajar, battery, maintenance, check engine, oil pressure, brake and ABS warning lights	S	S	S	S					
Digital quartz clock	S	S	S	S					
Three-zone automatic climate control with push-button controls, individual temperature settings with air and odor filter for driver, front passenger and rear-seat passengers	-	-	S	S					
Defroster-linked CFC-free front/rear air conditioning with separate rear control panel and air filter	S	S	-	-					
Manual second- and third-row window sunshades	-	-	P	S					

## SAFETY AND CONVENIENCE

 Star Safety System™ – includes Vehicle Stability Control (VSC) <sup>17</sup> with Traction Control (TRAC), Anti-lock Brake System (ABS) with Electronic Brake-force Distribution (EBD) and Brake Assist <sup>18</sup>	S	S	S	S	Tire Pressure Monitor System (TPMS) <sup>21</sup>	S	S	S	S
Front ventilated disc/solid rear disc brakes	S	S	S	S	Child-protector sliding door locks	S	S	S	S
Driver front airbag and front passenger airbag with Advanced Airbag System <sup>19</sup>	S	S	S	S	Battery-saver feature – deactivates personal lights after 30 minutes with lights on	S	S	S	S
Driver and front passenger front seat-mounted side and three-row side curtain airbags <sup>19</sup>	S	S	S	S	Windshield wiper de-icer grid	P	P <sup>3</sup>	P <sup>3</sup>	S
3-point seatbelts in all seating positions, with adjustable seatbelt anchors on front- and second-row seats, driver's belt Emergency Locking Retractor (ELR); Automatic/Emergency Locking Retractors (ALR/ELR) on all other seats <sup>20</sup>	S	S	S	S	Daytime Running Lights (DRL)	P	P/O <sup>22</sup>	P/O <sup>22</sup>	O
Front seatbelt pretensioners with force limiters	S	S	S	S	Jam protection function with auto-reverse on power sliding doors and rear door	-	-	S	S
Driver and front passenger seatbelt warning system	S	S	S	S	Jam protection function with auto-reverse on available power sliding door	-	P	-	-
Collapsible steering column	S	S	S	S	Engine immobilizer	-	S	-	-
Reinforced steel unitized body with high-tensile-strength steel body panels	S	S	S	S	Anti-theft system with engine immobilizer	-	-	S	S
Front and rear crumple zones and side-impact beams for front and sliding doors	S	S	S	S	Front and Rear Intuitive Parking Assist	-	-	-	S
					Rear Intuitive Parking Assist	-	P	P/O	-

S = Standard O = Optional - = Not Available P = Feature is available as part of an option package.

1. Toyota strives to build vehicles to match customer interest and thus they typically are built with popular options and option packages. Not all options/packages are available separately and some may not be available in all regions of the country. See [toyota.com](http://toyota.com) for information about options/packages commonly available in your area. If you would prefer a vehicle without or different options, contact your dealer to check for current availability or the possibility of placing a special order. 2. Not available on AWD models. 3. Standard on AWD models. 4. Before towing, confirm your vehicle and trailer are compatible, hooked up and loaded properly and that you have any necessary additional equipment. Do not exceed any Weight Ratings and follow all instructions in your Owner's Manual. The maximum you can tow depends on the total weight of any cargo, occupants and available equipment. 5. 8-passenger seating is not available on LE AWD, XLE and Limited. 6. Limited 2WD model only. 7. Dynamic Laser Cruise Control is designed to assist the driver and is not a substitute for safe and attentive driving practices. Please see your Owner's Manual for important instructions and cautions. 8. The Bluetooth<sup>®</sup> technology phones listed on [toyota.com](http://toyota.com) have been tested for compatibility with Toyota vehicles. Performance will vary based on phone software version, coverage and your wireless carrier. Phones are warranted by their manufacturer, not Toyota. 9. Auto up/down with jam protection standard on LE, XLE and Limited. 10. HomeLink<sup>®</sup> is a registered trademark of Johnson Controls, Inc. 11. Thirteen cup holders with removable center console. 12. Satellite radio requires XM<sup>®</sup> or Sirius-compatible receiver and monthly service fee. See your Toyota dealer for further details. Reception of the satellite signal may vary depending on location. All fees and programming subject to change. Subscriptions subject to the terms and conditions available at [www.xmradio.com](http://www.xmradio.com) or [www.sirius.com](http://www.sirius.com). Available only in the 48 contiguous United States. 13. The navigation system is designed to assist in locating an address or point of interest. Discrepancies may be encountered between the system and your actual location. Road system changes may affect the accuracy of the information provided. Rely on your common sense to decide whether to follow a specified route. Detailed coverage not available in every city or roadway. Periodic updates available at an additional cost. See your Navigation System Dealer's Manual for further details. 14. The backup camera does not provide a comprehensive view of the rear area of the vehicle. You should also look around outside your vehicle and use your mirrors to confirm rearward clearance. Cold weather will limit effectiveness and view may become cloudy. 15. When equipped with the DVD navigation system, the standard 6-disc in-dash CD changer is replaced with a 4-disc in-dash changer. 16. Headphones are for passenger use only. Do not use while operating vehicle. 17. Vehicle Stability Control (VSC) is an electronic system designed to help the driver maintain vehicle control under adverse conditions. It is not a substitute for safe driving practices. Factors including speed, road conditions and driver steering input can all affect whether VSC will be effective in preventing a loss of control. Please see your Owner's Manual for further details. 18. Brake Assist is designed to help the driver take full advantage of the benefits of ABS. It is not a substitute for safe driving practices. Braking effectiveness also depends on proper brake system maintenance and tire and road conditions. 19. All the airbag (AB) systems are Supplemental Restraint Systems. All ABs (if installed) are designed to inflate only under certain conditions and in certain types of severe collisions: frontal and knee ABs typically inflate in frontal collisions; side and side-curtain ABs in side collisions; Roll-Overing Curtain ABs at a severe tilt degree, roll or lateral G-force. In all other accidents, the ABs will not inflate. To decrease the risk of injury from an inflating AB, always wear seatbelts, sit upright in the middle of the seat as far back as possible and do not lean against the door. Do not put objects in front of an AB or around the seatback. Do not use a rearward-facing child seat in any front passenger seat. The force of an inflating AB may cause serious injury or death. See your Owner's Manual for further information/warnings. 20. Adjustable seatbelt anchor on driver-side second-row seat (2-passenger models) and on second-row outboard seats (8-passenger models). 21. The Toyota Tire Pressure Monitor alerts the driver when tire pressure is critically low. For optimal tire wear and performance, tire pressure should be checked regularly with a gauge; do not rely solely on the monitor system. See your Owner's Manual for details. 22. Available with Cold Weather Package on LE 2WD, Fog Lamp Package on XLE 2WD, or as a stand-alone option on LE AWD and XLE AWD.



## 08 PACKAGES AND OPTIONS

### CE

**CE Extra Value Package #1** – includes cruise control and roof rack

Windshield wiper de-icer grid and Daytime Running Lights (DRL)

**Towing Prep Package<sup>1</sup>** – 3500-lb. towing capacity with heavy-duty radiator, heavy-duty fan, 150-amp alternator and power-steering oil cooler

### LE

**LE and LE AWD Extra Value Package #1** – includes passenger-side power sliding door with driver-side sliding door and rear door electronic locking system, HomeLink<sup>®2</sup> universal transceiver, overhead multi-information display and 8-way power-adjustable driver's seat

16-in. 6-spoke aluminum alloy wheels with P215/65R16 tires<sup>7</sup>

Windshield wiper de-icer grid<sup>3</sup> and Daytime Running Lights (DRL)

**LE and LE AWD Extra Value Package #2** – includes dual power sliding doors with rear door electronic locking system, HomeLink<sup>®2</sup> universal transceiver, overhead multi-information display and 8-way power-adjustable driver's seat

Daytime Running Lights (DRL)<sup>8</sup>

**Towing Prep Package<sup>1</sup>** – 3500-lb. towing capacity with heavy-duty radiator, heavy-duty fan, 150-amp alternator and power-steering oil cooler

**Upgrade Package** – includes 17-in. 7-spoke aluminum alloy wheels with P225/60R17 tires<sup>3</sup>, JBL Synthesis<sup>®</sup> AM/FM with 6-disc in-dash CD changer, satellite radio capability<sup>4</sup>, MP3/WMA capability, Bluetooth<sup>®5</sup> wireless technology, ten speakers and two in-glass antennas with FM diversity reception, rear-seat DVD entertainment system with 9-inch display, two 115V outlets, two wireless headphones<sup>9</sup> and Rear Intuitive Parking Assist

### XLE

**XLE and XLE AWD Extra Value Package #1** – includes leather-trimmed seats with heated driver and front passenger seats and manual second- and third-row window sunshades

17-in. 7-spoke aluminum alloy wheels with P225/60R17 tires<sup>3</sup>

Rear Intuitive Parking Assist

**XLE and XLE AWD Extra Value Package #2** – includes leather-trimmed seats with heated driver and front passenger seats and manual second- and third-row window sunshades and power tilt/slide moonroof with sunshade

JBL Synthesis<sup>®</sup> AM/FM with 6-disc in-dash CD changer, satellite radio capability<sup>4</sup>, MP3/WMA capability, Bluetooth<sup>®5</sup> wireless technology, ten speakers and two in-glass antennas with FM diversity reception

**XLE and XLE AWD Extra Value Package #3** – includes leather-trimmed seats with heated driver and front passenger seats and manual second- and third-row window sunshades, power tilt/slide moonroof with sunshade, rear-seat DVD entertainment system with 9-inch display, two 115V outlets and two wireless headphones<sup>9</sup>

Daytime Running Lights (DRL)<sup>8</sup>

**XLE and XLE AWD Extra Value Package #4** – includes leather-trimmed seats with heated driver and front passenger seats and manual second- and third-row window sunshades, power tilt/slide moonroof with sunshade, JBL Synthesis<sup>®</sup> AM/FM with 4-disc in-dash CD changer, satellite radio capability<sup>4</sup>, MP3/WMA capability, ten speakers and two in-glass antennas with FM diversity reception, DVD navigation system<sup>9, 11</sup> with backup camera<sup>10</sup> and Bluetooth<sup>®5</sup> wireless technology, rear-seat DVD entertainment system with 9-inch display, two 115V outlets, two wireless headphones<sup>9</sup> and Rear Intuitive Parking Assist

**Towing Prep Package<sup>1</sup>** – 3500-lb. towing capacity with heavy-duty radiator, heavy-duty fan, 150-amp alternator and power-steering oil cooler

**Fog Lamp Package** – includes windshield wiper de-icer grid<sup>3</sup>, fog lamps and Daytime Running Lights (DRL) (standard on AWD)

**Convenience Package** – includes color-keyed power folding, electrochromic, memory, heated outside mirrors with puddle lamps and turn-signal indicators, electrochromic inside rearview mirror, power tilt/slide moonroof with sunshade, and 8-way power-adjustable driver's seat with 2-person memory function and 4-way front passenger power seat with height-adjustable headrests

**Popular Package** – includes rear-seat DVD entertainment system with 9-inch display, two 115V outlets, two wireless headphones<sup>9</sup> and power tilt/slide moonroof with sunshade

### LIMITED

**Limited and Limited AWD Extra Value Package #1** – includes rear-seat DVD entertainment system with 9-inch display, two 115V outlets and two wireless headphones<sup>9</sup>

High Intensity Discharge (HID) headlamps and Dynamic Laser Cruise Control<sup>12</sup>

**Limited and Limited AWD Extra Value Package #2** – includes DVD navigation system<sup>9, 11</sup> with backup camera<sup>10</sup> and Bluetooth<sup>®5</sup> wireless technology, rear-seat DVD entertainment system with 9-inch display, two 115V outlets and two wireless headphones<sup>9</sup>

Power folding/adjustable 60/40 Split & Stow 3rd Row<sup>TM</sup> seat<sup>13</sup>

**Towing Prep Package<sup>1</sup>** – 3500-lb. towing capacity with heavy-duty radiator, heavy-duty fan, 150-amp alternator and power-steering oil cooler

Daytime Running Lights (DRL)



## 08 COMBINATIONS

### COLOR



Black with Stone or Taupe interior



Blue Mirage Metallic with Stone or Taupe interior



Silver Pine Mica with Stone or Taupe interior



Salsa Red Pearl with Stone or Taupe interior



Desert Sand Mica with Taupe interior



Slate Metallic with Stone interior



Silver Shadow Pearl with Stone interior



Natural White<sup>14</sup> with Stone or Taupe interior



Arctic Frost Pearl<sup>15</sup> with Stone or Taupe interior

### FABRIC/LEATHER



CE fabric in Stone



CE fabric in Taupe



LE fabric in Stone



LE fabric in Taupe



XLE fabric in Stone



XLE fabric in Taupe



Leather trim<sup>16</sup> in Stone



Leather trim<sup>16</sup> in Taupe

### WHEEL



CE and LE standard 16-in. wheel cover



LE available and XLE standard 16-in. aluminum alloy wheel



LE and XLE available and LE AWD, XLE AWD, Limited and Limited AWD standard 17-in. aluminum alloy wheel

1. See footnote 4 in Features section. 2. HomeLink<sup>®</sup> is a registered trademark of Johnson Controls, Inc. 3. Standard on AWD models. 4. See footnote 12 in Features section. 5. See footnote 8 in Features section. 6. Headphones are for passenger use only. Do not use while operating vehicle. 7. Not available on 2WD models. 8. Available as a stand-alone option on AWD models only. 9. See footnote 13 in Features section. 10. See footnote 14 in Features section. 11. See footnote 15 in Features section. 12. See footnote 7 in Features section. 13. 2WD models only. 14. Not available on XLE and Limited. 15. Extra-cost color. Not available on CE and LE. 16. Available on XLE, standard on Limited.



## 08 SPECIFICATIONS

MECHANICAL/PERFORMANCE	CE	LE	XLE	LIMITED
Engine	3.5-liter DOHC 24-valve VVT-i V6 266 hp @ 6200 rpm 245 lb.-ft. @ 4700 rpm			
Ignition	Electronic, with Toyota Direct Ignition (TDI)			
Transmission	5-speed electronically controlled automatic overdrive with intelligence (ECT-i)			
Drivetrain	Front engine, front-wheel drive; All-Wheel Drive (AWD) available on LE, XLE and Limited			
Body construction	Unitized body with anti-vibration sub-frame			
Suspension	MacPherson strut front suspension with gas-filled shock absorbers and torsion beam rear suspension with coil springs and gas-filled shock absorbers, and front and rear stabilizer bars			
Steering	Variable-assist power rack-and-pinion			
Turning circle diameter, curb to curb (ft.)	36.8	36.8	36.8	36.8
Brakes	Power-assisted ventilated 4-wheel disc brakes with Anti-lock Brake System (ABS) and Brake Assist <sup>1</sup>			
EXTERIOR DIMENSIONS (in.)				
Overall height, unloaded	68.9	68.9	68.9	68.9
Overall width	77.4	77.4	77.4	77.4
Overall length	201.0	201.0	201.0	201.0
Wheelbase	119.3	119.3	119.3	119.3
Tread width (front/rear) with available tires	65.6/66.9 65.9/67.3 <sup>2</sup>	65.6/66.9 65.9/67.3 <sup>2</sup>	65.6/66.9 65.9/67.3 <sup>2</sup>	65.6/66.9 65.9/67.3 <sup>2</sup>
Ground clearance	6.9	6.9	6.9	6.9
Coefficient of drag (Cd)	0.30	0.30	0.30	0.30
INTERIOR DIMENSIONS front/middle/rear (in.)				
Head room with moonroof	42.0/40.2/38.1 39.5/38.6/38.1	42.0/40.2/38.1 39.5/38.6/38.1	42.0/40.2/38.1 39.5/38.6/38.1	42.0/40.2/38.1 39.5/38.6/38.1
Shoulder room	63.8/64.9/61.1	63.8/64.9/61.1	63.8/64.9/61.1	63.8/64.9/61.1
Hip room	58.4/67.5/51.8	58.4/67.5/51.8	58.4/67.5/51.8	58.4/67.5/51.8
Leg room	42.9/39.6/39.5	42.9/39.6/39.5	42.9/39.6/39.5	42.9/39.6/39.5
WEIGHTS AND CAPACITIES				
Curb weight (lb.) (7-passenger/8-passenger/AWD)	4270/4295/NA	4270/4295/4515	4310/NA/4545	4310/NA/4545
Cargo volume (cu. ft.) <sup>3</sup> behind front/middle/rear seats	148.9/94.5/43.6	148.9/94.5/43.6	148.9/94.5/43.6	148.9/94.5/43.6
Towing capacity <sup>4</sup> (lb.), maximum	3500	3500	3500	3500
Fuel tank (gal.)	20	20	20	20
TIRES				
Size 2WD AWD	P215/65R16 NA	P215/65R16 P225/60R17	P215/65R16 P225/60R17	P225/60R17 P225/60R17
Type	All-Season steel-belted radial blackwall	All-Season steel-belted radial blackwall <sup>5</sup>	All-Season steel-belted radial blackwall <sup>5</sup>	All-Season steel-belted radial blackwall <sup>5</sup>
Spare (2WD only)	Temporary	Temporary <sup>6</sup>	Temporary <sup>6</sup>	Temporary <sup>6</sup>
MILEAGE ESTIMATES (mpg city/highway) <sup>7</sup>				
2WD AWD	17/23 16/21	17/23 16/21	17/23 16/21	17/23 16/21



## ACCESSORIES

Add a personal touch to your Sienna with Toyota accessories. Some accessories may not be available in all regions of the country. See your Toyota dealer for details.



Rear spoiler



Doorsill protectors



All-weather floor mats



Cargo net

All-weather floor mats  
Ashtray/lighter  
Auto-dimming mirror<sup>8</sup>  
Bright silver 16-in. 5-spoke aluminum alloy wheels  
Cargo mat  
Cargo net

Cargo tote  
Carpeted floor mats  
Doorsill protectors  
Dual port hitch system  
Emergency assistance kit  
First aid kit

Hood protector  
Mudguards  
Rear spoiler  
Running boards  
Simulated molded burlwood dash applique  
Sirius Satellite Radio<sup>9</sup>

Towing accessories  
VIP Security – Glass Breakage Sensor (GBS)<sup>10</sup>  
Wheel locks  
Wireless headphones<sup>11</sup>  
XM Satellite Radio<sup>9</sup>

1. See footnote 18 in Features section. 2. Standard on AWD. 3. Cargo and load capacity limited by weight and distribution. 4. See footnote 4 in Features section. 5. Run-flat tire technology is designed for limited emergency use only. If air pressure is lost, vehicle speed must remain below 55 miles per hour; cornering, braking and accelerating must be done with extreme caution; and the tire should be replaced within 100 miles. Please see your Toyota dealer for details. 6. AWD models come standard with run-flat tires and do not come equipped with spare tire. 7. 2008 EPA-estimated mileage. For model year 2008, the EPA has revised the way the estimated fuel economy ratings are determined. Actual mileage will vary. To learn more, visit the Department of Energy's and EPA's fuel economy Web site. 8. Available on CE and LE. 9. See footnote 12 in Features section. 10. Available for vehicles with factory security. 11. Headphones are for passenger use only. Do not use while operating vehicle.

## TOYOTA FINANCIAL SERVICES\*

Now that you're thinking about a Toyota, you may also want to consider leasing or financing the purchase of your new vehicle through your participating dealer and Toyota Financial Services (TFS). TFS offers a variety of high-quality finance and lease products to complement your lifestyle. At TFS we realize that purchasing or leasing a vehicle is a major commitment and we have developed some of the finest customer-focused finance and insurance solutions to help protect your interests over time. And in most cases, you may include your cost for these products in your finance

or lease contract. Few companies can match the expertise, customer care and total value of TFS. Ask your Toyota dealer or go to [www.toyotafinancial.com](http://www.toyotafinancial.com) for details.

\*Toyota Financial Services is a service mark of Toyota Motor Credit Corporation and Toyota Motor Insurance Services, Inc. Products are available to qualified customers through your participating Toyota dealer and Toyota Financial Services.

## WARRANTIES

Every Toyota Car, Truck and SUV is built to exceptional standards. And that's not idle boasting. We back it up with these Limited Warranty Coverages:

**Basic:** 36 months/36,000 miles (all components other than normal wear and maintenance items).

**Powertrain:** 60 months/60,000 miles (engine, transmission/transaxle, front-wheel drive, rear-wheel drive, seatbelts and airbags).

**Rust-Through:** 60 months/unlimited miles (corrosion perforation of sheet metal).

**Emissions:** Coverages vary under Federal and California regulations. Refer to applicable *Owner's Warranty Information* booklet for details.

**Accessories:** For accessories purchased at the time of the new vehicle purchase, the Toyota Accessory Warranty coverage is in effect for 36 months/36,000 miles from the vehicle's in-service date, which is the same coverage as the Toyota New Vehicle Limited Warranty.

For accessories purchased after the new vehicle purchase the coverage is 12 months, regardless of mileage, from the date the accessory was installed on the vehicle, or the remainder of any applicable new vehicle warranty, whichever provides greater coverage, with the exception of car covers. Car covers are warranted for 12 months from the date of purchase and do not assume any coverage under the Toyota New Vehicle Limited Warranty.

You may be eligible for transportation assistance if it's necessary that your vehicle be kept overnight for repairs covered under warranty. Please see your authorized Toyota dealership for further details.

For complete details about Toyota's warranties, please visit [www.toyota.com](http://www.toyota.com), refer to the applicable *Owner's Warranty Information* booklet or see your Toyota dealer.

Some vehicles are shown with available equipment. Seatbelts should be worn at all times. Please do not allow passengers to ride in the cargo area. For details on vehicle specifications, standard features and available equipment in your area, contact your Toyota dealer. A vehicle with particular equipment may not be available at the dealership. Ask your Toyota dealer to help locate a specifically equipped vehicle.

All information presented herein is based on data available at the time of printing, is subject to change without notice and pertains specifically to mainland U.S.A. vehicles only.



For Toyota Mobility program details, go to [www.toyota.com/mobility](http://www.toyota.com/mobility) or call the Toyota Customer Assistance Center at 1-800-331-4331







AVALON



CAMRY



CAMRY SOLARA



COROLLA



PRIUS



YARIS SEDAN



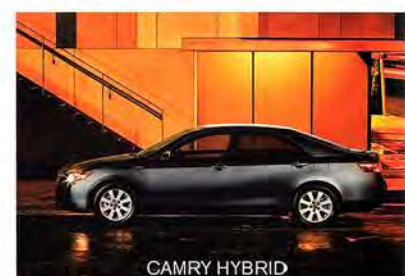
YARIS LIFTBACK



MATRIX



TUNDRA



CAMRY HYBRID



TACOMA



LAND CRUISER



4RUNNER



HIGHLANDER



HIGHLANDER HYBRID



FJ CRUISER



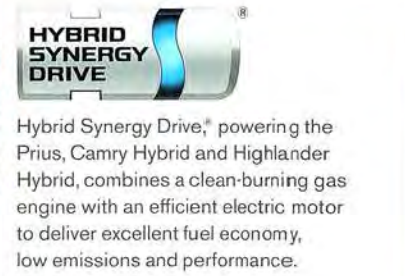
SEQUOIA



RAV4



SIENNA



Hybrid Synergy Drive,\* powering the Prius, Camry Hybrid and Highlander Hybrid, combines a clean-burning gas engine with an efficient electric motor to deliver excellent fuel economy, low emissions and performance.