

CHEVY TRUCKS  LIKE A ROCK

COMMERCIAL TRUCKS



Introducing The 2001 Chevy Commercial Trucks — page 2

New Duramax Diesel And Vortec Engines — page 4

Choosing The Right Model — page 8

S-10 Pickup — page 10

Silverado 1500 And 2500 Regular Cab Pickups — page 12

Silverado 1500 And 2500 Extended Cab Pickups — page 14

Introducing The All-New Silverado 2500HD And 3500 Pickups — page 16

Silverado Regular Cab Chassis Cab — page 20

Silverado Extended Cab Chassis Cab — page 22

C3500 HD Chassis Cab — page 24

You've got a lot to do. Dependable Chevy Trucks can help you get it done. And this year, Chevy offers a wide variety of **hard-working truck models** to help your business. There's the Chevy S-10 Extended Cab that offers interior flexibility and seats up to five people. An even bigger story is the new **Silverado 2500HD and 3500** models, joining Silverado 1500 and 2500 models. The new 2500HD and 3500 offer a wide selection of cab and box configurations with two-wheel-drive or 4x4 capability. Power comes from a strengthened Vortec 6000 V8 SFI engine that delivers more torque than before. New **Duramax Diesel 6600 V8** and **Big Block Vortec 8100 V8 SFI** engines are available and are the most powerful engines in the Chevy Truck lineup. **Chevy Trucks.** Still the most dependable, longest-lasting trucks on the road.*

*Dependability based on longevity: 1981-1999 full-line light-duty truck company registrations. Excludes other GM divisions.

Chevrolet Commercial Specialty Vehicle Department. When it comes to your business's bottom line, the Chevrolet



Commercial Specialty Vehicle (CSV) Department can help you choose the **right truck for your job.** Specially trained CSV personnel offer dealers commercially oriented product knowledge to help spec out different types of vehicle bodies. See your Chevrolet dealer for complete details or call the **CSV Express Line at 1-800-759-5550.** You may also visit the Chevrolet CSV web site at **chevrolet.com**. The web site is a great source of commercial information. In addition to viewing vehicles, you can find information regarding product features.

NOTE: This brochure shows many vehicles that have been altered or outfitted with equipment, bodies or components supplied to Chevrolet by independent suppliers. Chevrolet is not responsible for the safety or quality of design, features, materials or workmanship of any alterations by such a supplier. See the back cover for further information about alterations and warranties.

CHEVY TRUCKS. ALWAYS ON THE JOB.



Silverado 3500 4x4 LS Crew Cab Big Dooley Pickup shown in Sunset Gold Metallic with lift from an independent supplier. See the back cover for more information about alterations and warranties.



Chevy S-10 Pickup, page 10.



Silverado Regular Cab Pickup, page 12.



Silverado 4-Door Extended Cab Pickup, page 14.



Silverado 4-Door Extended Cab 2500HD Pickup, page 16.



Silverado 3500 Crew Cab Pickup, page 18.



Silverado Regular Cab Chassis Cab, page 20.



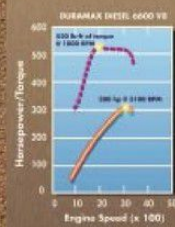
Silverado 4-Door Extended Cab Chassis Cab, page 22.



Chevy C3500 HD Chassis Cab, page 24.

DURAMAX DIESEL

For some truck owners, only a diesel engine will do. When it came time to build one for **Silverado 2500HD and 3500** models, GM engineers selected Isuzu Motors, Limited — the world's leader in building reliable diesel engines for more than 60



years, in which time over 13 million diesel engines have been produced. The combined GM-Isuzu effort led to the new

Duramax

Diesel 6600 V8 engine. With 300 horsepower and 520 lb.-ft. of torque, the Duramax Diesel engine **outmuscles diesel engines from Ford and Dodge.**

The new Duramax Diesel 6600 V8 engine. Setting the standard in diesel power.

*Based on 2000 model year GM Large Pickup segment competitive information.

DURAMAX DIESEL 6600 V8 SELECT STANDARD FEATURES:

- 300 horsepower @ 3100 rpm and 520 lb.-ft. of torque @ 1800 rpm.
- Fracture-split alloy connecting rods reduce weight and increase durability.
- An integral engine oil cooler optimizes water flow through the oil cooler, providing cooler oil to the engine throughout the operating range.
- Common rail fuel injection, developed by Bosch, optimizes fuel injection rates for reduced combustion noise.
- Direct injection with pilot injection delivers precise amounts of fuel to each cylinder to help reduce emissions and noise levels.
- Quieter than Ford and Dodge diesel engines.*
- The cylinder heads are constructed of strong, lightweight aluminum which dissipates heat.

*Based on 2000 model year competitive testing data.

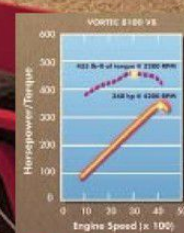


Silverado 3500 4x4 LS 4-Door Extended Cab Big Dooly Long Box with the available new Duramax Diesel 6600 V8 engine and available Allison 1000 Series five-speed automatic transmission. Shown in Onyx Black with available features.

POWER. A CHEVY TRUCK TRADITION.



Like all Vortec engines, the new available **Big Block Vortec 8100 V8 SFI** engine is one remarkable powerplant. With 340 horsepower and 455 lb.-ft. of torque on hand, it **outmuscles V10 engines from Ford and Dodge.** Integrated into this



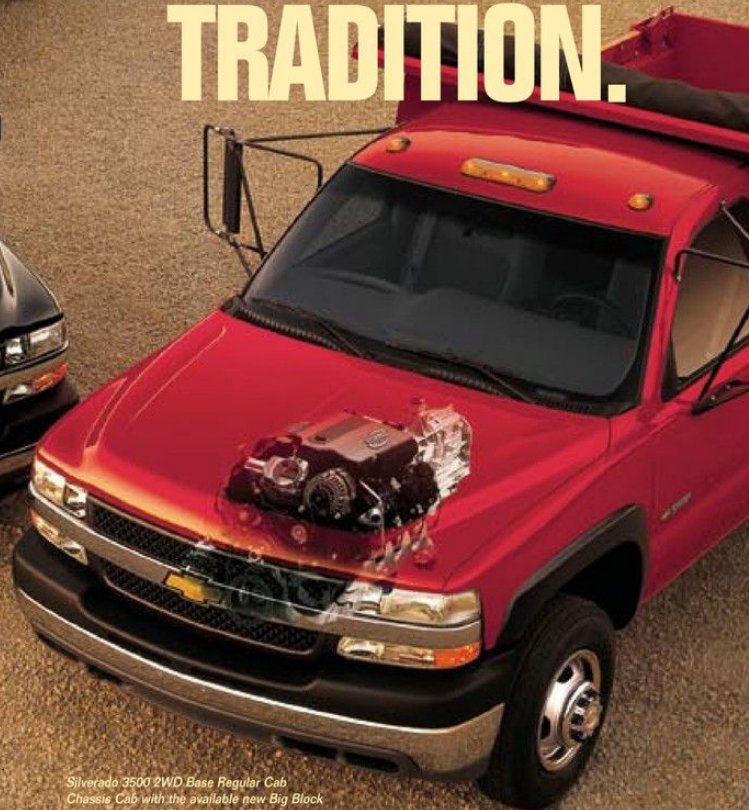
new Vortec engine are an **internally balanced crankshaft and stainless-steel exhaust manifolds.** The Big Block Vortec V8 SFI engine is also designed with low-maintenance features in mind. **Accessory drive belts** are designed to operate up to **150,000 miles** before replacement.*

*Based on 2000 model year GM Large Pickup segment competitive information. *Maintenance needs vary with different uses and driving conditions. See the Owner's Manual for more information.

BIG BLOCK VORTEC 8100 V8 SFI SELECT STANDARD FEATURES:

- 340 horsepower @ 4200 rpm and 455 lb.-ft. of torque @ 3200 rpm.
- A coolant loss protection feature allows the truck to be driven a limited distance at a reduced speed in order to reach a service facility.
- An oil level sensor alerts the driver at engine start-up to a low-oil situation.
- A high-capacity crankshaft is internally balanced, which, in turn, reduces stress on the crankshaft.
- Efficient seals used in combination with large, flat surfaces are designed to help reduce the chance of oil leaks.
- Equal-length runners in the intake manifold help provide efficient combustion.

NOTE: This brochure shows many vehicles that have been altered or upfitted with equipment, bodies or components supplied to Chevrolet by independent suppliers. Chevrolet is not responsible for the safety or quality of design features, materials or workmanship of any alterations by such a supplier. See the back cover for further information about alterations and warranties.



Silverado 3500 2WD Base Regular Cab Chassis Cab with the available new Big Block Vortec 8100 V8 SFI engine and ZF six-speed manual transmission. Shown in Victory Red.



ALLISON TRANSMISSION In the pickup truck market, the new Allison 1000 Series five-speed automatic transmission is exclusive to GM pickups for 2001.* The Allison 1000 Series is available in new Silverado 2500HD and 3500 models equipped with either the available new Duramax Diesel 6600 V8 engine or the Big Block Vortec 8100 V8 engine. The 1000 Series automatic brings Allison's reputation for durability,

reliability and advanced electronic controls to a new truck class. The new Allison 1000 Series features grade braking that automatically downshifts to help slow the vehicle when the driver applies the brakes while descending long, steep grades. A Power Takeoff (PTO) provision is also included for powering auxiliary equipment.†

*Based on GM Large Pickup segment. †Some optional equipment is required for PTO installation.

HYDROFORMED FRONT FRAME. Hydroforming the front section of the frame during manufacturing reduces the stretching of the steel. This allows the steel to retain more of its strength than traditional stampings, making the Silverado frame exceptionally durable.

POWERFUL ENGINE CHOICES. Silverado offers a broad line of powerful Vortec gasoline engines, including a strengthened 300-horsepower Vortec 6000 V8 SFI engine, standard in 2500, 2500HD and 3500 models. Also available is the new Duramax Diesel 6600 V8 engine, available in 2500HD and 3500 models.

POWER TAKEOFF (PTO) CAPABILITY. 2500HD and 3500 models equipped with the standard ZF six-speed manual transmission or available Allison five-speed automatic provide PTO capability. PTO can power a dump body or hydraulic motors for generators or tools. (Some optional equipment is required for PTO installation.)

PARK PAWL. The park pawl function on automatic transmissions is designed to hold the full vehicle weight when the transmission is shifted into "park." The park pawl on the available Allison 1000 Series automatic transmission can hold Gross Vehicle Weight Ratings (GVWRs) of up to 19,850 lbs.

HYDROFORMED CROSS MEMBERS. Hydroformed tubular cross members for the pickups and close-out plates provide enhanced frame rigidity.

CORROSION RESISTANCE. All body panels (except the roof) are constructed from two-sided galvanized steel for added corrosion resistance, and a high temperature wax is applied to the frame to help it resist corrosion.

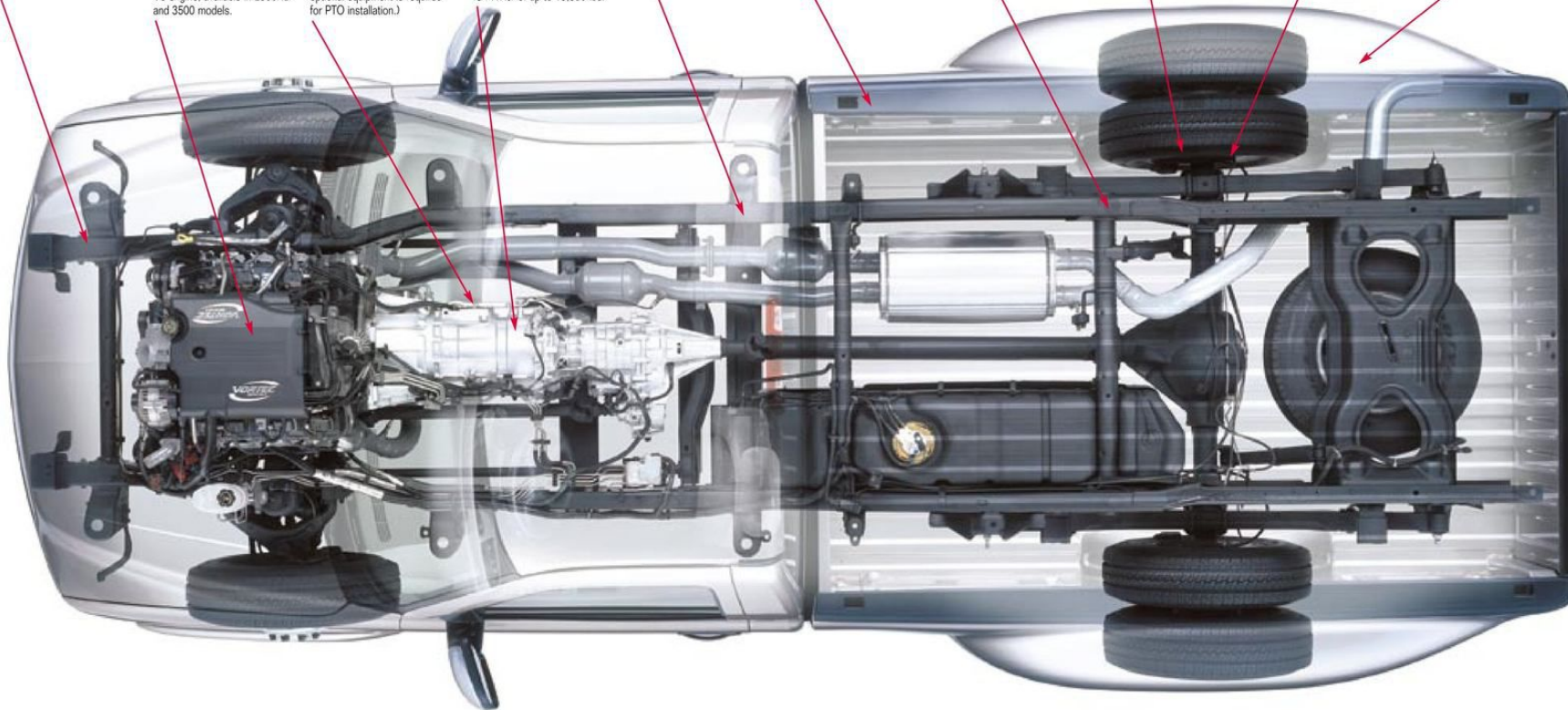
STAMPED REAR FRAME. The rear C-section of the frame is stamped, providing the strength Chevy Truck owners expect. The frame features straight rails for stability, especially when trailering or hauling cargo.

FOUR-WHEEL ANTILOCK DISC BRAKES. Silverado is the only pickup truck to feature standard four-wheel antilock disc brakes on all models.*

*Based on 2000 model year GM Large Pickup segment competitive information. Excludes other GM vehicles.

DYNAMIC REAR PROPORTIONING. DRP is included with the standard four-wheel antilock disc brakes on every Silverado. DRP modulates the pressure that is applied to the rear brakes. This results in better front-to-rear brake balance.

COMPOSITE REAR FENDERS. Rear fenders on Silverado 3500 Big Dooley models are constructed from one-piece injection molded material that resists minor dings and scratches and will never rust.



If it's **strength** you need, **Silverado** has it. From its **advanced technology** to its **strong design**, Silverado was engineered to provide years of service. **Hydroformed cross members** and a **stamped rear frame** provide the strength Chevy Truck owners expect. And new this year is an Allison 1000 Series five-speed automatic transmission with grade braking and passive shift stabilization, available on 2500HD and 3500 models. Look into Silverado and you'll see what we mean when we say it's **The Truck**.



CHEVY SILVERADO. AN INSIDE LOOK.



ALLISON 1000 SERIES FIVE-SPEED AUTOMATIC TRANSMISSION. An Allison 1000 Series five-speed automatic transmission with grade braking is available on 2500HD and 3500 models equipped with the Big Block Vortec 8100 V8 SFI engine or the Duramax Diesel 6600 V8 engine.



GRADE BRAKING. You can tow with added confidence when you select the available Allison 1000 Series five-speed automatic transmission. It includes grade braking that automatically downshifts to help slow the vehicle when the driver applies the brakes while descending long, steep grades.



TOW/HAUL MODE. Tow/Haul mode, when activated, enhances trailering by reprogramming the optional automatic transmission shift schedule when you're transporting heavy loads.



PRO-TEC BOX. A new injection-molded pickup box is available on Silverado 1500 Extended Cab Short Box models with the Z71 Off-Road Package. It resists scratches and dents and is designed not to rust.



ENGINE HOUR METER. A standard Engine Hour Meter indicates how long your engine has been in use. It's a feature that you'll appreciate having, especially if your truck spends a lot of time idling.



TRAILER BRAKE PRE-WIRING. Now you don't have to splice wires to hook up your trailer's electric brakes. Silverado has a standard Electronic Brake Controller (EBC) connector that's conveniently located under the dash.



TRAILER READY. The trailer-ready design of Silverado features an eight-wire lead along with an available seven-pin connector and weight-distributing hitch (included with the Z82 Heavy-Duty Trailering Package).



AUTOTRAC 4x4 SYSTEM. When the Autotrac AUTO 4WD mode is selected, power is automatically sent to the front wheels whenever rear-wheel slippage is detected. Available only in Chevy Silverado 1500 and 2500 models.

CHEVY TRUCKS. STRENGTH FOR YOUR BUSINESS.

Chevy Trucks offer a **broad range of models** with different cab configurations, box lengths, two-wheel-drive or 4x4 capability, and a choice of trim levels. Each truck is powered by a **strong engine** that's matched to an equally well-performing transmission. No matter which model you choose, you can be confident knowing **Chevy Trucks are designed to get the job done.**



	CHEVY TRUCK MODEL	SERIES	WHEELBASE (WB) (IN.)	CARGO BOX LENGTH (FT.)	DRIVE	PAYLOAD (LBS.) ¹ SHORT WB / LONG WB	GVWR RANGE (LBS.) ²	STANDARD ENGINE	OPTIONAL ENGINE	AVAILABLE AXLE RATIOS
	S-10 Pickup Regular Cab		108.3 & 117.9	6 & 7.5	2WD	1160 / 1488	4200 - 4900	Vortec 2200 L4	Vortec 4300 V6	3.42, 3.73, 4.10
	S-10 Pickup Extended Cab		122.9	6	2WD 4x4	1175 898	4400 - 4600 4900 - 5150	Vortec 2200 L4 Vortec 4300 V6	Vortec 4300 V6 —	3.42, 4.10 3.42, 3.73
	Silverado Regular Cab	1500	119.0 & 133.0	6.5 & 8	2WD 4x4	2042 / 2265 1749 / 1955	6100 - 6400 6100 - 6400	Vortec 4300 V6 Vortec 4300 V6	Vortec 4800 V8 Vortec 5300 V8 Vortec 4800 V8 Vortec 5300 V8	3.08, 3.42, 3.73 3.73, 4.10
		2500	133.0	8	2WD	3605	8600	Vortec 6000 V8	—	3.73, 4.10
		2500HD	133.0	8	2WD 4x4	4029 3779	9200	Vortec 6000 V8	Vortec 8100 V8 Duramax Diesel 6600 V8	3.73, 4.10
		3500	133.0	8	2WD 4x4	5753 5465	11,400	Vortec 6000 V8	Vortec 8100 V8 Duramax Diesel 6600 V8	3.73, 4.10
	Silverado Extended Cab	1500 ³	143.5 & 157.5	6.5 & 8	2WD 4x4	1787 / 1725 1624 / 1424	6200 - 6400 6400	Vortec 4300 V6 (6.5 ft. box) Vortec 4800 V8 (8 ft. box) Vortec 4800 V8 Vortec 6000 V8	Vortec 4800 V8 (6.5 ft. box) Vortec 5300 V8 Vortec 5300 V8	3.42, 3.73 3.73, 4.10 3.73, 4.10
		2500	143.5	6.5	4x4	3092	8600	Vortec 6000 V8	—	3.73, 4.10
		2500HD	143.5 & 157.5	6.5 & 8	2WD 4x4	3964 / 3677 3559 / 3376	9200	Vortec 6000 V8	Vortec 8100 V8 Duramax Diesel 6600 V8	3.73, 4.10
		3500	157.5	8	2WD 4x4	5403 5070	11,400	Vortec 6000 V8	Vortec 8100 V8 Duramax Diesel 6600 V8	3.73, 4.10
	Silverado Crew Cab	2500HD	153.0 & 167.0	6.5 & 8	2WD 4x4	3615 / 3463 3312 / 3175	9200	Vortec 6000 V8	Vortec 8100 V8 Duramax Diesel 6600 V8	3.08, 3.42, 3.73
		3500	167.0	8	2WD 4x4	5184 4857	11,400	Vortec 6000 V8	Vortec 8100 V8 Duramax Diesel 6600 V8	3.73, 4.10
	Silverado Chassis Cab Regular Cab	3500	137.0 & 161.5	—	2WD 4x4	5776 / 5702 6089 / 5914	11,400 12,000	Vortec 6000 V8	Vortec 8100 V8 Duramax Diesel 6600 V8	3.73, 4.10
	Silverado Chassis Cab Extended Cab	3500	161.5 & 185.5	—	2WD 4x4	5644 / 5265 5644 / 5544	11,400 12,000	Vortec 6000 V8	Vortec 8100 V8 Duramax Diesel 6600 V8	3.73, 4.10
	C3500 HD Chassis Cab Regular Cab		135.5, 159.5, 183.5	—	2WD	9235 / 8879 / 8615	15,000	Vortec 8100 V8 SFI	6.5L Turbo-Diesel V8	4.63, 5.13

Silverado 2500HD 4x4 Regular Cab Long Box in Forest Green Metallic. Shown with toolbox from an independent supplier. See the back cover for a note about alterations and warranties.

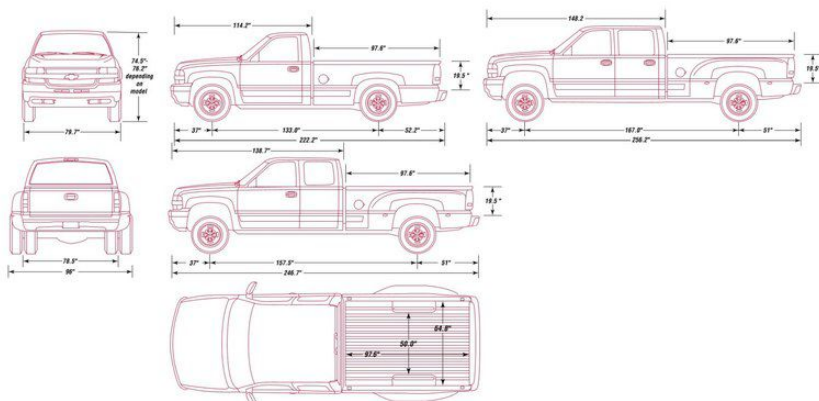
1 Payload includes weight of driver, passengers, optional equipment and cargo. 2 Gross Vehicle Weight Rating includes weight of the vehicle and all payload. 3 Vortec 5300 V8 SFI engine is standard with LT trim.

NOTE: Model availability of driveline combinations must be verified by your Chevrolet dealer for current emissions equipment.

SILVERADO 3500 PICKUP SPECIFICATIONS

SERIES			REGULAR CAB	EXTENDED CAB	CREW CAB
GVWR range (lbs.) ¹ — 2WD			11,400	11,400	11,400
GVWR range (lbs.) ¹ — 4x4			11,400	11,400	11,400
Payload (lbs.) ² — 2WD			5753	5403	5184
Payload (lbs.) ² — 4x4			5465	5070	4857
ENGINE AVAILABILITY	HP @ RPM	TORQUE (LB.-FT.) @ RPM			
Vortec 6000 V8 SFI ³	300 @ 4400	360 @ 4000	S	S	S
Vortec 8100 V8 SFI ³	340 @ 4200	455 @ 3200	O	O	O
Duramax Diesel 6600 V8	300 @ 3100	520 @ 1800	O	O	O
TRANSMISSION/TRANSFER CASE AVAILABILITY					
5-speed OD manual					
4-speed OD automatic; electronically controlled, with brake/transmission shift interlock					
ZF 6-speed OD manual ⁶					
Allison 5-speed automatic; electronically controlled ⁶					
Transfer case, 2-speed (4x4 only); floor-mounted					
Transfer case, electric shift control (4x4 only); instrument panel-mounted ⁷					
CHASSIS FEATURES					
Alternator: 105-amp					
Battery: 600 cold-cranking amps					
Brakes, 4-wheel disc; with Dynamic Rear Proportioning					
— Antilock brake system: 4-wheel (ABS)					
— Front rotor size (in.) — diameter and thickness					
— Rear rotor size (in.) — diameter and thickness					
Fuel tank capacity (gal., approx.)					
Rear locking differential					
Steering: integral power, recirculating ball					
Front suspension: independent torsion bar					
Rear suspension: hypoid drive axle (with 3-stage multileaf springs)					
Wheels (in.) — 2WD					
Wheels (in.) — 4x4					
Standard tires: all-season radial — 2WD					
Standard tires: all-season radial — 4x4					
Optional tires					

S — Standard. O — Optional. **1** Gross Vehicle Weight Rating includes vehicle, passengers, equipment and cargo. Higher GVWRs (where available) require optional equipment. **2** Payload includes passengers, equipment and cargo. Base payload ratings are based on engineering test weights at time of printing and reflect all available engines. **3** Sequential Fuel Injection. **4** Not available with LT trim. **5** Included with LT trim. **6** Requires Vortec 8100 V8 SFI engine or Duramax Diesel 6600 V8 engine. **7** Not available with Base trim, optional with LS trim. Requires automatic transmission.
 • Tire load range: E (10-ply).



Silverado 3500 4x4 LS Crew Cab Big Dooley Pickup Long Box shown in Victory Red.

“WE PUT A LOT OF MILES ON OUR CHEVY TRUCKS.”



Silverado Crew Cab interior shown in Graphite with Custom Cloth seating.

It's a big job maintaining the 800-mile-long Trans-Alaska Pipeline. It winds through three mountain ranges and crosses 800 streams and rivers. Blinding blizzards can strike from the north slope without warning. Out here, you'd better have a truck you can depend on. That's why David Greenlee of Alyeska Pipeline Service Co. and his pipeline crews depend on **hardworking Chevy pickups** to get the job done. “We put a lot of miles on our Chevy Trucks and drive to fairly remote areas, so dependability is very important,” Greenlee said. “Since diesel fuel is more plentiful, the 1-ton Chevy C/K Crew Cab 4x4 with the diesel engine has been ideal for our needs.” With the new **2001**



David Greenlee, Fleet Manager, Alyeska Pipeline Service Co., Fairbanks, Alaska

Silverado 3500 Crew Cab, Greenlee will get a **big interior and four full-size doors** for his big crew. **New injection-molded composite rear fenders** on all 3500 Pickup models resist dents and will never rust. And with an available new 300-horsepower **Duramax Diesel 6600 V8 engine**, he'll get more diesel power than Ford and Dodge diesel engines can offer. Throw in an available **Allison 1000 Series five-speed automatic transmission** — an **industry-exclusive** option^{*} — and he'll be good to go. And go. More proof that **Silverado** isn't just any ordinary pickup. It's **The Truck**.

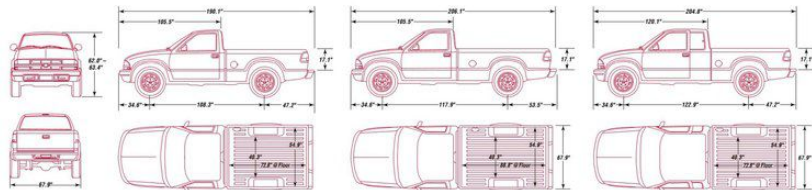
^{*}Based on 2000 model year GM Large Pickup segment competitive information. ^{*}Excludes other GM vehicles.

S-10 PICKUP SPECIFICATIONS

MODEL	2WD REGULAR CAB	2WD EXTENDED CAB	4x4 EXTENDED CAB	4x4 CREW CAB LS
GVWR range (lbs.) ¹	4200/4900	4400/4600	5150	5150
Base payload (lbs.) ²	1160/1488	1175	898	1125
ENGINE	AVAILABILITY	HP @ RPM	TORQUE (LB.-FT.) @ RPM	
RPO L43 Vortec 2200 L4 SFI ³	2WD	120 @ 5000	140 @ 3600	S
RPO L35 Vortec 4300 V6 SFI ⁴	2WD	180 @ 4400	245 @ 2800	O
	4x4	190 @ 4400	250 @ 2800	S
TRANSMISSION/TRANSFER CASE AVAILABILITY				
5-speed OD manual	S	S	S	—
4-speed OD automatic; electronically controlled, with brake/transfer shift interlock	O	O	O	S
Insta-Trac transfer case control, electric shift (4x4 only); instrument panel-mounted, no Neutral position	—	—	S	S
CHASSIS FEATURES				
Alternator (amps)	100	100	100	100
Battery: 525 cold-cranking amps	S	S	S	S
Brakes: power hydraulic, self-adjusting (front disc/rear drum on 2WD; front disc/rear disc, 4x4)	S	S	S	S
— Antilock brake system: 4-wheel (ABS)	S	S	S	S
— Booster: vacuum power	S	S	S	S
— Front rotor size (in.) — diameter and thickness	10.50 x 1.03	10.50 x 1.03	10.50 x 1.03	10.50 x 1.03
— Rear drum size (in.) — diameter and width	9.50 x 2.00	9.50 x 2.00	—	—
— Rear rotor size (in.) — diameter and thickness	—	—	11.60 x 0.79	11.60 x 0.79
Cold Climate Package: includes 690 cca heavy-duty battery and engine block heater	O	O	O	O
Fuel tank capacity (gal., approx.)	19	19	19	19
Locking rear differential (requires Vortec 4300 V6 SFI ⁴ engine and optional rear axle ratio)	O	O	O	O
Steering: power	S	S	S	S
Front suspension: independent (with coil springs on 2WD and torsion bars on 4x4)	S	S	S	S
— Axle capacity (lbs.)	2500	2500	2800	2800
— Spring capacity (lbs.)	2500	2500	2800	2800
Rear suspension: hypoid drive axle (with 2-stage leaf springs)	S	S	S	S
— Axle capacity (lbs.)	2300	2700	2900	2900
— Spring capacity (lbs.)	2300	2700	2700	2700
Shield Package (includes transfer case and front-differential skid plates, plus fuel tank and steering linkage shields)	—	—	O	O
Wheels (in.)	15 x 7 ⁴	15 x 7 ⁴	15 x 7	15 x 7
Standard tires: all-season radial	P205/75R-15 ALS	P205/75R-15 ALS	P235/70R-15 ALS	P235/70R-15 ALS
Optional tires: all-season radial	P235/55R-16 ⁵ ALS	P235/55R-16 ⁵ ALS	—	—
Optional tires: on-/off-road radial	—	—	P235/75R-15 OOR 31x10.5R-15C ⁶ OOR	—

S — Standard. O — Optional. ALS — All-season radial ply. OOR — On-/off-road radial ply.

¹ Gross Vehicle Weight Rating includes vehicle, passengers, equipment and cargo. Higher GVWRs (where available) require optional equipment. ² Payload includes passengers, equipment and cargo. Higher payloads (where available) require optional equipment. Base payload ratings are based on engineering test weights at time of printing and reflect all available engines. ³ Sequential Fuel Injection. ⁴ 16" x 8" with optional Z08 Sport Suspension Package. ⁵ Requires RPO ZQ8 Sport Suspension Package. ⁶ Included with optional RPO ZR2 Wide-stance Sport Performance Package only; includes full-size spare tire. **NOTE:** Tire chains should not be used on S-10 Pickups equipped with P235/55R-16 ALS, P235/75R-15 OOR, P235/70R-15 ALS or 31x10.5R-15C OOR tires because they could cause damage to these vehicles. • Tire load range: C (6-ply).



S-10 2WD Base Regular Cab Pickup shown in Summit White.

“WE LIKE THE FACT THAT S-10 PICKUPS FIT OUR NEEDS.”



Chevy S-10 Pickup interior shown in Graphite with standard vinyl trim.

When your business has depended on the rugged and versatile **Chevy S-10 Pickup** day in and day out for more than eight years, why would you switch? You wouldn't. “We’ve been buying S-10 Pickups since 1993 because they work well for our business,” said Rick McDonald, Fleet Director for ServiceMaster Consumer Services, which supplies S-10 Pickups to Terminix International. “The service professionals who drive these trucks every day also comment on how comfortable S-10 Pickups are.” And with the **2001 S-10 Extended Cab model**, the Terminix team will be impressed with its available **third door**, offering **interior versatility and convenience**. Like all S-10 Pickups, the Extended Cab model is built for dependability and hard work. It has a strong, **steel ladder-type frame** and **armored brake lines**. **Four-wheel antilock brakes** are included on every model. The **Vortec 2200 L4 engine**, standard on 2WD models or the **Vortec 4300 V6 SFI engine**, standard on 4x4 models, provide plenty of reliable power. And the available Vortec 2200 L4 engine can operate on E85 — a blend of alcohol and gasoline for reduced emissions. **Chevy S-10 Pickup**. The versatile pickup that’s big on ruggedness.



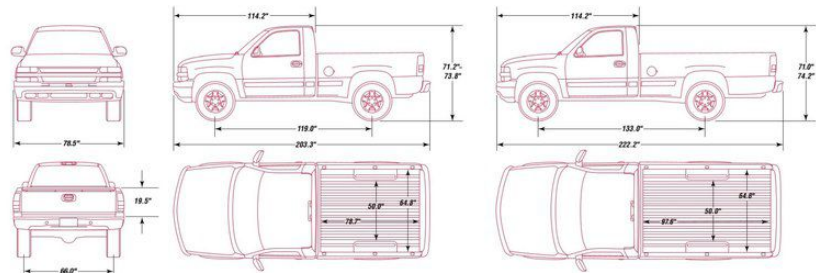
Rick McDonald,
Fleet Director,
ServiceMaster
Consumer Services,
Memphis, Tenn.

SILVERADO REGULAR CAB PICKUP SPECIFICATIONS

SERIES	1500 (1/2-TON)	2500 (3/4-TON)
GVWR range (lbs.) — 2WD	6100/6400	8600
GVWR range (lbs.) — 4x4	6100/6400	—
Payload (lbs.): ¹ Short Box/Long Box — 2WD	2042/2265	—/3605
Payload (lbs.): ¹ Short Box/Long Box — 4x4	1749/1955	—
ENGINE AVAILABILITY	HP @ RPM	TORQUE (LB.-FT.) @ RPM
Vortec 4300 V6 SFI ²	200 @ 4600	260 @ 2800
Vortec 4800 V8 SFI ³	270 @ 5200	285 @ 4000
Vortec 5300 V8 SFI ³	285 @ 5200	325 @ 4000
Vortec 6000 V8 SFI ³	300 @ 4400	360 @ 4000
TRANSMISSION/TRANSFER CASE AVAILABILITY		
5-speed OD manual	S ⁴	—
5-speed heavy-duty OD manual	—	S
4-speed OD automatic: electronically controlled, with brake/transmission shift interlock	O	—
4-speed heavy-duty automatic: electronically controlled, with brake/transmission shift interlock	—	O
Transfer case, 2-speed (4x4 only): floor-mounted	S	S
Transfer case, active, electric shift control (4x4 only): Autotrac ⁵	O	O
CHASSIS FEATURES		
Alternator: 105-amp	S	S
Battery: 600 cold-cranking amps	S	S
Brakes, 4-wheel disc: with Dynamic Rear Proportioning	S	S
— Antilock brake system: 4-wheel (ABS)	S	S
— Front rotor size (in.) — diameter and thickness	12.01 x 1.14	12.80 x 1.50
— Rear rotor size (in.) — diameter and thickness	12.80 x 0.78	12.99 x 1.14
Fuel tank capacity (gal., approx.): Short Box/Long Box	26/34	34
Rear locking differential	O ⁶	O
Steering:		
— Power rack-and-pinion	S ⁷	—
— Integral power	S ⁸	S
Front suspension:		
— Independent (with coil springs on 2WD and torsion bars on 4x4)	S	—
— Independent, torsion bar	—	S
Rear suspension: hypoid drive axle (with 2-stage multileaf springs)	S	S
Wheels (in.) — 2WD	16.0 x 6.5	16.0 x 6.5
Wheels (in.) — 4x4	16.0 x 6.5	—
Standard tires: all-season radial — 2WD	P235/75R-16	LT245/75R-16E
Standard tires: all-season radial — 4x4	P245/75R-16	—
Optional tires	See your Chevrolet dealer for sizes and model restrictions.	

S — Standard. O — Optional. ¹ Gross Vehicle Weight Rating includes vehicle, passengers, equipment and cargo. Higher GVWRs (where available) require optional equipment. ² Payload includes passengers, equipment and cargo. Base payload ratings are based on engineering test weights at time of printing and reflect all available engines. ³ Sequential Fuel Injection. ⁴ Not available with Vortec 5300 V8 SFI engine. ⁵ Not available with Base trim, optional with LS trim. Requires automatic transmission. ⁶ Not available with 3.08 rear axle. ⁷ 2WD models only. ⁸ 4x4 models only. **NOTE:** Tire chains should not be used on Silverado Pickups equipped with P265/75R-16 tires because they could cause damage to these vehicles.

• Tire load range: E (10-ply).

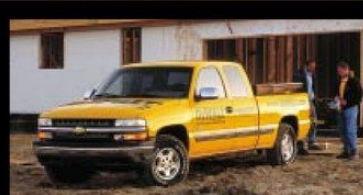


NOTE: This brochure shows many vehicles that have been altered or upfitted with equipment, bodies or components supplied to Chevrolet by independent suppliers. Chevrolet is not responsible for the safety or quality of design features, materials or workmanship of any alterations by any such supplier. See the back cover for further information about alterations and warranties.



Silverado 1500 2WD Base Regular Cab Long Box in Summit White. Shown with toolbox from an independent supplier. See the back cover for a note about alterations and warranties.

“OUR BUSINESS DEPENDS ON CHEVY SILVERADO.”



DeWALT TOOLS®

Chevy Trucks and DeWALT Tools have teamed up to offer the DeWALT tool option to qualified commercial customers. As the leader in high performance industrial tools and accessories, DeWALT knows what it takes to build tough and dependable tools and accessories people can count on. Qualified customers can take advantage of DeWALT quality tools by choosing the DeWALT tool option when they buy or lease an eligible new commercial Silverado pickup. See your Chevy dealer for more details.

For more information about DeWALT tools and accessories, visit their web site at www.dewalt.com.

Corey Fritz, Sales Manager of Fritz Builders in Romeo, Mich., a longtime associate of Chevrolet, credits the dependable **Chevy Silverado** for making his family's business operate as efficiently as it does. "We have to be able to get to the work site no matter how far away it is. Sometimes, the roads aren't even paved and there's mud everywhere. That's why **comfort** and **dependability** are a priority," Fritz said. "We also like the power from the **Vortec engine**, especially my dad, Norm, a co-owner of the business," Fritz added. And there's a lot more to like about the well-equipped Silverado. It's full of standard features like a **Driver Message Center**, a **Tilt-Wheel™ steering column** and **dual power ports**, to help make your job a little easier. And no matter which Silverado model you choose, **four-wheel antilock disc brakes with DRP** are standard. In fact, Silverado is the **only half-ton pickup with four-wheel antilock disc brakes standard on all models.* Chevy Silverado**. It's one hard worker.

*Based on 2000 model year GM Large Pickup segment competitive information. Excludes other GM vehicles.



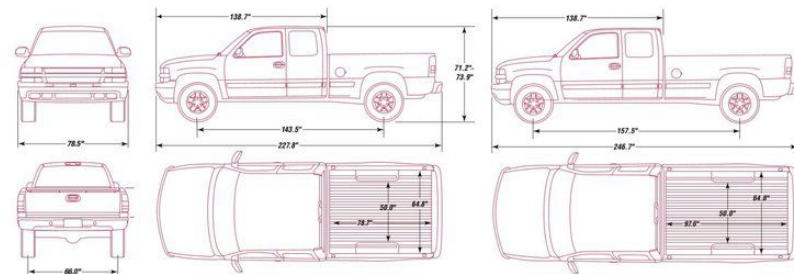
Corey Fritz,
Sales Manager,
Fritz Builders,
Romeo, Mich.

SILVERADO EXTENDED CAB PICKUP SPECIFICATIONS

SERIES	1500 (1/2-TON)	2500 (3/4-TON)
GVWR range (lbs.) — 2WD	6200/6400	—
GVWR range (lbs.) — 4x4	6400	8600
Payload (lbs.): ¹ Short Box/Long Box — 2WD	1787/1725	—
Payload (lbs.): ¹ Short Box/Long Box — 4x4	1624/1424	3092/—
ENGINE AVAILABILITY	HP @ RPM	TORQUE (LB.-FT.) @ RPM
Vortec 4300 V6 SFI ¹	200 @ 4600	260 @ 2800
Vortec 4800 V8 SFI ¹	270 @ 5200	285 @ 4000
Vortec 5300 V8 SFI ¹	285 @ 5200	325 @ 4000
Vortec 6000 V8 SFI ¹	300 @ 4400	360 @ 4000
TRANSMISSION/TRANSFER CASE AVAILABILITY		
5-speed OD manual	S ⁶	—
5-speed heavy-duty OD manual	—	S ⁷
4-speed OD automatic: electronically controlled, with brake/transmission shift interlock	O ⁶	—
4-speed heavy-duty OD automatic: electronically controlled, with brake/transmission shift interlock	—	O ⁶
Transfer case, 2-speed (4x4 only): floor-mounted	S	S
Transfer case, active, electric shift control (4x4 only): Autotrac ¹	O ⁶	O ⁶
CHASSIS FEATURES		
Alternator: 105-amp	S	S
Battery: 600 cold-cranking amps	S	S
Brakes, 4-wheel disc: with Dynamic Rear Proportioning	S	S
— Antilock brake system: 4-wheel (ABS)	S	S
— Front rotor size (in.) — diameter and thickness	12.01 x 1.14	12.80 x 1.50
— Rear rotor size (in.) — diameter and thickness	12.80 x 0.78	12.99 x 1.14
Fuel tank capacity (gal., approx.): Short Box/Long Box	26/34	26
Rear locking differential	O ⁸	O
Steering:		
— Power rack-and-pinion	S ¹⁰	—
— Integral power, speed-sensitive	S ¹¹	S
Front suspension: independent (with coil springs on 2WD and torsion bars on 4x4)	S	S
Rear suspension: hypoid drive axle (with 2-stage multileaf springs)	S	S
Wheels (in.) — 2WD	16.0 x 6.5	—
Wheels (in.) — 4x4	16.0 x 6.5	16.0 x 6.5
Standard tires: all-season radial — 2WD	P235/75R-16	—
Standard tires: all-season radial — 4x4	P245/75R-16	LT245/75R-16E
Optional tires	See your Chevrolet dealer for sizes and model restrictions.	

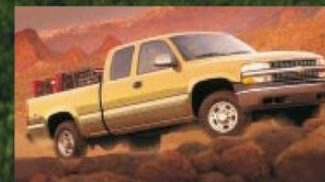
S — Standard. O — Optional. ¹ Gross Vehicle Weight Rating includes vehicle, passengers, equipment and cargo. Higher GVWRs (where available) require optional equipment. ² Payload includes passengers, equipment and cargo. Base payload ratings are based on engineering test weights at time of printing and reflect all available engines. ³ Sequential Fuel Injection. ⁴ 2WD Extended Cab Short Box model only. Vortec 4800 V8 SFI engine is standard on all other models. ⁵ Included with LT trim. ⁶ Not available with LT trim. ⁷ Not available with LT trim. ⁸ Not available with Base trim, optional with LS trim. Requires automatic transmission. ⁹ Not available with 3.08 rear axle. ¹⁰ 2WD models only. ¹¹ 4x4 models only. **NOTE:** Tire chains should not be used on Silverado Pickups equipped with P265/75R-16 tires because they could cause damage to these vehicles.

• Tire load range: E (10-ply).



Silverado 1500 4x4 LS 4-Door Extended Cab Short Box in Light Pewter Metallic. Shown with upfit from an independent supplier. See the back cover for a note about alterations and warranties.

"I CHOSE CHEVY TRUCKS BECAUSE OF THEIR WORKABILITY AND COMFORT."



Silverado 2500 shown in Sunset Gold Metallic.

As owner of Mike's Tree Surgeons, Inc., a day at the office for Mike Barger means hauling away a maple tree or loading fertilizer tanks. Whatever the job calls for, one thing is certain — **big payload and big towing** capacities are a necessity. That's why his business relies on **Chevy Trucks**. "I've always bought Chevy Trucks because I feel comfortable in them," Barger said. For towing and hauling, Barger also looks for big power. "My older Chevy C/K Pickups had Vortec 3500 engines in them and had great power, but I'm anxious to check out the new Vortec 6000 V8 engine," he said. We bet he'll like what he finds. For 2001, the 300-horsepower **Vortec 6000 V8 SFI engine**, standard on 2500, 2500HD and 3500 models, has been **strengthened to deliver even more torque** than before — just what you need when moving heavy loads. Add to that the **most rear-seat legroom** of any Extended Cab half-ton pickup* and you'll see why **Silverado** has one big story to tell.

*Based on 2000 model year GM Large Pickup segment competitive information.

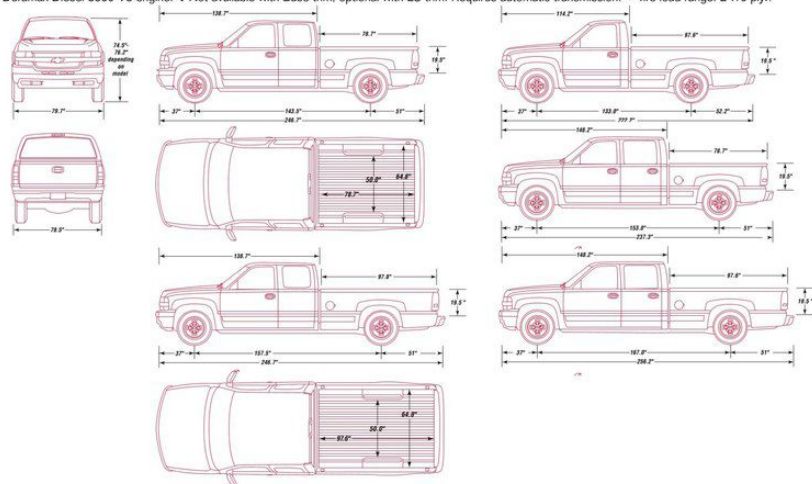


Mike Barger, Owner, Mike's Tree Surgeons, Inc., Troy, Mich.

SILVERADO 2500HD PICKUP SPECIFICATIONS

SERIES	REGULAR CAB	EXTENDED CAB	CREW CAB
GVWR range (lbs.) ¹ — 2WD	9200	9200	9200
GVWR range (lbs.) ¹ — 4x4	9200	9200	9200
Payload (lbs.) ² Short Box/Long Box — 2WD	—/4029	3964/3677	3615/3463
Payload (lbs.) ² Short Box/Long Box — 4x4	—/3779	3559/3376	3312/3175
ENGINE AVAILABILITY	HP @ RPM	TORQUE (LB.-FT.) @ RPM	
Vortec 6000 V8 SFI ³	300 @ 4400	360 @ 4000	S S S
Vortec 8100 V8 SFI ³	340 @ 4200	455 @ 3200	O O O
Duramax Diesel 6600 V8	300 @ 3100	520 @ 1800	O O O
TRANSMISSION/TRANSFER CASE AVAILABILITY			
5-speed OD manual	S	S*	S*
4-speed OD automatic; electronically controlled, with brake/transmission shift interlock	O	O*	O*
ZF 6-speed OD manual ⁶	O	O*	O*
Allison 5-speed automatic; electronically controlled ⁶	O	O	O
Transfer case, 2-speed (4x4 only): floor-mounted	S	S	S
Transfer case, electric shift control (4x4 only): instrument panel-mounted ⁷	O	O*	O*
CHASSIS FEATURES			
Alternator: 105-amp	S	S	S
Battery: 600 cold-cranking amps	S	S	S
Brakes, 4-wheel disc; with Dynamic Rear Proportioning	S	S	S
— Antilock brake system: 4-wheel (ABS)	S	S	S
— Front rotor size (in.) — diameter and thickness	12.80 x 1.50	12.80 x 1.50	12.80 x 1.50
— Rear rotor size (in.) — diameter and thickness	12.99 x 1.54	12.99 x 1.54	12.99 x 1.54
Fuel tank capacity (gal., approx.): Short Box/Long Box	26/34	26/34	26/34
Rear locking differential	O	O	O
Steering: integral power, recirculating ball	S	S	S
Front suspension: independent torsion bar	S	S	S
Rear suspension: hypoid drive axle (with 2-stage multileaf springs)	S	S	S
Wheels (in.) — 2WD	16.0 x 6.5	16.0 x 6.5	16.0 x 6.5
Wheels (in.) — 4x4	16.0 x 6.5	16.0 x 6.5	16.0 x 6.5
Standard tires: all-season radial — 2WD	LT245/75R-16E	LT245/75R-16E	LT245/75R-16E
Standard tires: all-season radial — 4x4	LT245/75R-16E	—	LT245/75R-16E
Optional tires	See your Chevrolet dealer for sizes and model restrictions.		

S — Standard. O — Optional. **1** Gross Vehicle Weight Rating includes vehicle, passengers, equipment and cargo. Higher GVWRs (where available) require optional equipment. **2** Payload includes passengers, equipment and cargo. Base payload ratings are based on engineering test weights at time of printing and reflect all available engines. **3** Sequential Fuel Injection. **4** Not available with LT trim. **5** Included with LT trim. **6** Requires Vortec 8100 V8 SFI engine or Duramax Diesel 6600 V8 engine. **7** Not available with Base trim, optional with LS trim. Requires automatic transmission. * Tire load range: E (10-ply).



NOTE: This brochure shows many vehicles that have been altered or upfitted with equipment. Bodies or components supplied to Chevrolet by independent suppliers. Chevrolet is not responsible for the safety or quality of design features, materials or workmanship of any alterations by any such supplier. See the back cover for further information about alterations and warranties.



Silverado 2500HD 4x4 LS 4-Door Extended Cab Long Box in Sunset Gold Metallic. Shown with a toolbox and other accessories from an independent supplier. See the back cover for a note about alterations and warranties.

"I BUY CHEVY TRUCKS BECAUSE THEY'RE RIGHT FOR MY BUSINESS."



All Silverado Extended Cab models come with a standard fourth door for added versatility.

For big room and big payload capacities, Bob Fox won't buy anything but **Chevy Trucks** for his family's business, Fox Brothers Co. But those aren't the only reasons he and his five brothers rely on their fleet of Chevy Trucks. "We've always had good luck with the Chevy Trucks we've used day in and day out. We load them down with sheets of siding and supplies and they still work fine," Fox said. In fact, he recently added a 2000 Chevy Silverado Extended Cab to his fleet. "I like the four doors on the Extended Cab and the engine power is great. It does the job without any hesitation," he said. And in the window and siding business, it helps to have that kind of confidence in your trucks. That's why Bob and his crew will also appreciate what the **new Silverado HD 4-Door Extended Cab** models have to offer. They come standard with a **strengthened Vortec 6000 V8 SFI engine**. Or they can be equipped with either the available **Duramax Diesel 6600 V8 engine** that delivers 520 lb.-ft. of torque or the available **Big Block Vortec 8100 V8 engine**. Of course, getting people and supplies in and out of the big interior is easy with the **standard fourth door**. The new **Silverado HD Extended Cab**. Built to handle tough jobs.

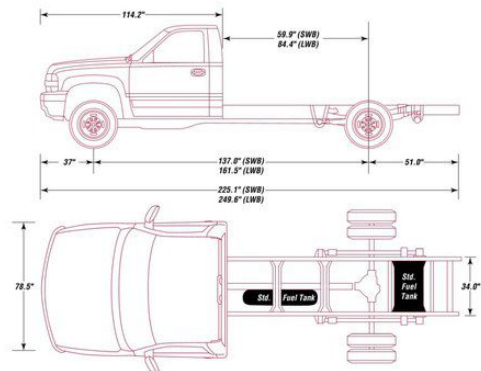


Bob Fox,
Owner,
Fox Brothers Co.,
Hartland, Mich.

SILVERADO REGULAR CAB CHASSIS CAB SPECIFICATIONS

SERIES		3500 (1-TON)
GVWR range (lbs.) ¹ — 2WD		11,400
GVWR range (lbs.) ¹ — 4x4		12,000
Base payload (lbs.) ² (Short Wheelbase/Long Wheelbase) — 2WD		5776/5702
Base payload (lbs.) ² (Short Wheelbase/Long Wheelbase) — 4x4		6089/5914
ENGINE AVAILABILITY		
Vortec 6000 V8 SFI ³	300 @ 4400	360 @ 4000
Vortec 8100 V8 SFI ³	340 @ 4200	455 @ 3200
Duramax Diesel 6600 V8	300 @ 3100	520 @ 1800
TRANSMISSION AVAILABILITY		
5-speed OD manual		S
4-speed OD automatic: electronically controlled		O
ZF 6-speed OD manual		O*
Allison 5-speed automatic: electronically controlled		O*
Transfer case, 2-speed (4x4 only): floor-mounted		S
Transfer case control, electric shift (4x4 only): instrument panel-mounted		O*
CHASSIS FEATURES		
Alternator: 105-amp		S
Battery: 600 cold-cranking amps		S
Brakes, 4-wheel disc: with Dynamic Rear Proportioning		S
- Antilock brake system: 4-wheel (ABS)		S
- Front rotor size (in.) — diameter and thickness		12.80 x 1.50
- Rear rotor size (in.) — diameter and thickness		12.99 x 1.54
Fuel tank capacity		S
- 50-gal. (approx. total with dual tanks; front is 27-gal., rear is 23-gal.)		S
Rear locking differential		O
Steering: integral power, recirculating ball		S
Front suspension: independent torsion bar		S
- 2WD axle capacity (lbs.)		4800
- 2WD torsion bar capacity (lbs.)		4500
- 4x4 axle capacity (lbs.)		4800
- 4x4 torsion bar capacity (lbs.)		4500
Rear suspension: hypoid drive axle (with 3-stage multileaf springs)		S
- 2WD axle capacity (lbs.)		9000
- 2WD coil spring capacity (lbs.)		8600
- 4x4 axle capacity (lbs.)		9000
- 4x4 coil spring capacity (lbs.)		8600
Wheels (in.)		16.0 x 6.5
Standard tires: all-season radial — 2WD		LT215/85R-16D
Standard tires: all-season radial — 4x4		LT215/85R-16E
Optional tires	See your Chevrolet dealer for sizes and model restrictions.	

S — Standard. O — Optional. ¹ Gross Vehicle Weight Rating includes vehicle, passengers, equipment and cargo. ² Payload includes passengers, equipment and cargo. ³ Sequential Fuel Injection. ⁴ Requires Vortec 8100 V8 SFI engine or Duramax Diesel 6600 V8 engine. ⁵ Requires LS trim and automatic transmission. * Tire load range: D (8-ply), E (10-ply).



NOTE: This brochure shows many vehicles that have been altered or upfitted with equipment, bodies or components supplied to Chevrolet by independent suppliers. Chevrolet is not responsible for the safety or quality of design features, materials or workmanship of any alterations by any such supplier. See the back cover for further information about alterations and warranties.



Silverado 3500 Regular Cab Chassis Cab in Victory Red. Shown with utility body upfit from an independent supplier. See the back cover for a note about alterations and warranties.

“CHEVY TRUCKS ARE JUST GREAT FOR UPFITTING.”

Rod Hartwig, a Truck Equipment Sales Manager for an independent vehicle upfit company, credits his company's success to its willingness to try new ideas, products and techniques, its market awareness and its flexibility. Among the many specialty bodies his company installs on unfinished Chevy Trucks are **stake bodies, service bodies and platforms** for commercial applications. “Most of our business is with Chevrolet in some capacity,” Hartwig said. Chances are, the upfit company Hartwig represents will install specialty bodies on the new **Silverado 3500 Regular Cab Chassis Cab**. After all, Silverado 3500 models start with a strong **hydroformed front frame** and a **stamped rear frame**. Add to that an independent torsion bar front suspension and new Silverado 3500 models provide a **solid foundation** for upfitting. “Overall, we’ve found that Chevy Trucks are great for upfitting. And when you start with great trucks, you’re going to end up with a capable product,” Hartwig said. We couldn’t have said it any better.

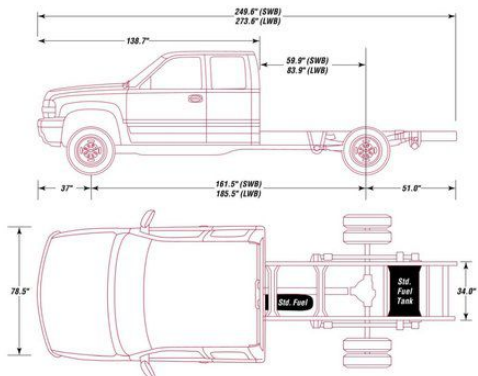


Rod Hartwig,
Truck Equipment
Sales Manager

SILVERADO EXTENDED CAB CHASSIS CAB SPECIFICATIONS

SERIES	3500 (1-TON)		
GVWR range (lbs.) ¹ — 2WD	11,400		
GVWR range (lbs.) ¹ — 4x4	12,000		
Base payload (lbs.) ² (Short Wheelbase/Long Wheelbase) — 2WD	5644/5265		
Base payload (lbs.) ² (Short Wheelbase/Long Wheelbase) — 4x4	5644/5544		
ENGINE AVAILABILITY	HP @ RPM	TORQUE (LB.-FT.) @ RPM	
Vortec 6000 V8 SFI ³	300 @ 4400	360 @ 4000	S
Vortec 8100 V8 SFI ³	340 @ 4200	455 @ 3200	O
Duramax Diesel 6600 V8	300 @ 3100	520 @ 1800	O
TRANSMISSION AVAILABILITY			
5-speed OD manual			S
4-speed OD automatic: electronically controlled			O
ZF 6-speed OD manual			O*
Allison 5-speed automatic: electronically controlled			O*
Transfer case, 2-speed (4x4 only): floor-mounted			S
Transfer case control, electric shift (4x4 only): instrument panel-mounted			O ³
CHASSIS FEATURES			
Alternator: 105-amp			S
Battery: 600 cold-cranking amps			S
Brakes, 4-wheel disc: with Dynamic Rear Proportioning			S
– Antilock brake system: 4-wheel (ABS)			S
– Front rotor size (in.) — diameter and thickness			12.80 x 1.50
– Rear rotor size (in.) — diameter and thickness			12.99 x 1.54
Fuel tank capacity			S
– 50-gal. (approx. total with dual tanks; front is 27-gal., rear is 23-gal.)			S
Rear locking differential			O
Steering: integral power, recirculating ball			S
Front suspension: independent torsion bar			S
– 2WD axle capacity (lbs.)			4800
– 2WD torsion bar capacity (lbs.)			4500
– 4x4 axle capacity (lbs.)			4800
– 4x4 torsion bar capacity (lbs.)			4500
Rear suspension: hypoid drive axle (with 3-stage multileaf springs)			S
– 2WD axle capacity (lbs.)			9000
– 2WD coil spring capacity (lbs.)			8600
– 4x4 axle capacity (lbs.)			9000
– 4x4 coil spring capacity (lbs.)			8600
Wheels (in.)			16.0 x 6.5
Standard tires: all-season radial — 2WD			LT215/85R-16D
Standard tires: all-season radial — 4x4			LT215/85R-16E
Optional tires			See your Chevrolet dealer for sizes and model restrictions.

S — Standard. O — Optional. ¹ Gross Vehicle Weight Rating includes vehicle, passengers, equipment and cargo. ² Payload includes passengers, equipment and cargo. ³ Sequential Fuel Injection. ⁴ Requires Vortec 8100 V8 SFI engine or Duramax Diesel 6600 V8 engine. ⁵ Requires LS trim and automatic transmission. * Tire load range: D (8-ply), E (10-ply).



NOTE: This brochure shows many vehicles that have been altered or upfitted with equipment, bodies or components supplied to Chevrolet by independent suppliers. Chevrolet is not responsible for the safety or quality of design features, materials or workmanship of any alterations by any such supplier. See the back cover for further information about alterations and warranties.



Silverado 3500 2WD 4-Door Extended Cab Chassis Cab in Summit White. Shown with upfit from an independent supplier. See the back cover for a note about alterations and warranties.

“CHEVY TRUCKS HAVE THE POWER AND CAPABILITY WE NEED.”

Silverado 4-Door Extended Cab Chassis Cab models are an impressive complement to your specialty body. That's why Dave Foley, Fleet Manager for Hartman & Tyner Property Management Co., chooses **Silverado Chassis Cab models** for his business. “We've been buying Chevy Trucks for 10 years and they're great for towing trailers and plowing snow,” Foley said. “We also depend on them for hauling landscaping materials. The Vortec engines give us all the power we could ask for.” In addition, Extended Cab models offer spacious room for up to six people. Hauling and towing with confidence is provided by a **strengthened Vortec 6000 V8 SFI engine**. Available is a **Duramax Diesel 6600 V8 engine** with 520 lb.-ft. of torque or the available **Big Block Vortec 8100 V8 SFI engine**. Both come standard with a high-capacity ZF six-speed manual transmission — or they can be coupled with an available **Allison 1000 Series five-speed automatic transmission**. And four-wheel antilock disc brakes with Dynamic Rear Proportioning (DRP) are standard. Silverado Extended Cab Chassis Cab. The ideal start to a specialty body upfit.

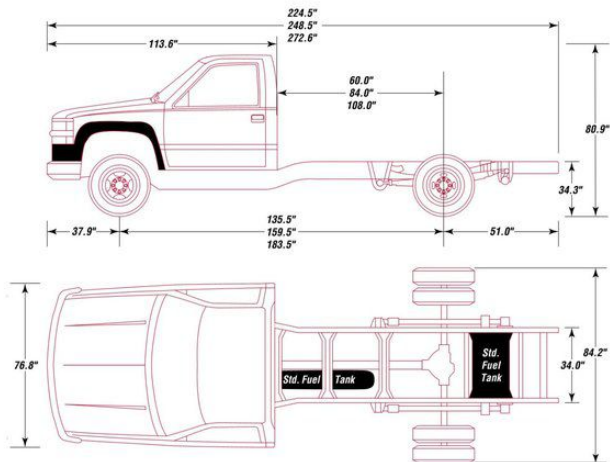


Dave Foley,
Fleet Manager,
Hartman & Tyner
Property Management Co.,
Southfield, Mich.

C3500 HD REGULAR CAB CHASSIS CAB SPECIFICATIONS

SERIES		C3500 HD (1-TON)
GVWR (lbs.) — (C-Series)		15,000
Base payload (lbs.) — (C-Series)		9235/8879/8615
ENGINE AVAILABILITY		
Vortec 8100 V8 SFI*	HP @ RPM 340 @ 4200	TORQUE (LB.-FT.) @ RPM 455 @ 3200 S
6.5L Turbo-Diesel V8*	195 @ 3400	430 @ 1800 [†] O
TRANSMISSION AVAILABILITY		
5-speed heavy-duty OD manual		S
4-speed heavy-duty OD automatic: electronically controlled, with brake/transmission shift interlock		O
CHASSIS FEATURES		
Alternator: 124-amp		S
Battery: 600 cold-cranking amps (dual with diesel engine)		S
Brakes, hydraulic: self-adjusting (4-wheel disc)		S
– Antilock brake system: 4-wheel (ABS)		S
– Booster: hydro-boost		S
– Front rotor size (in.) — diameter and thickness		13.90 x 1.43
– Rear rotor size (in.) — diameter and thickness		13.58 x 1.43
Fuel tank capacity — 40-gal. (approx. total with dual tanks; front is 22-gal., rear is 18-gal.)		S [‡]
Steering: integral power, speed-sensitive		S
Front suspension: I-beam (with leaf springs)		S
– Axle capacity (lbs.)		5000
– Spring capacity (lbs.)		5000
Rear suspension: hypoid drive axle (with leaf springs)		S
– Axle capacity (lbs.)		11,000
– Spring capacity (lbs.)		11,000
Wheels (in.)		19.5 x 6.0
Standard tires: highway radial		225/70R-19.5F

S — Standard. O — Optional. ¹ Gross Vehicle Weight Rating includes vehicle, passengers, equipment and cargo. ² Payload includes passengers, equipment and cargo. Base payload ratings are based on engineering test weights at time of printing and reflect all available engines. ³ Sequential Fuel Injection. ⁴ This diesel engine includes a specific warranty for 5 years or 100,000 miles, whichever comes first. A deductible per repair visit applies after 3 years/36,000 miles. See your Chevy Truck dealer for terms and conditions of this limited warranty. ⁵ Torque is 420 lb.-ft. @ 1800 rpm with the standard manual transmission. ⁶ Rear-mounted 18-gal. tank may be deleted for credit. **NOTE:** Tire chains should not be used because they could cause damage to this vehicle. • Tire load range: F (12-ply).



NOTE: This brochure shows many vehicles that have been altered or upfitted with equipment, bodies or components supplied to Chevrolet by independent suppliers. Chevrolet is not responsible for the safety or quality of design features, materials or workmanship of any alterations by any such supplier. See the back cover for further information about alterations and warranties.



C3500 HD 2WD C/K LS Chassis Cab. Shown with a recovery body and wheel trim from an independent supplier. See the back cover for information about alterations and warranties.

“THE C3500 HD IS IDEAL FOR OUR BUSINESS.”



C3500 HD 2WD Base Chassis Cab. Shown with additional options and stake body from an independent supplier. See the back cover for information about alterations and warranties.

Chevy C3500 HD Chassis Cab is one **tough performer**. But then, it has to be. Especially when guys like James Hurley, Sr., and his son, James, Jr., depend on it in all kinds of weather and demanding situations. “One of the main reasons we buy the 3500 HD models is because the comfort is there. At the end of the day, we don’t feel tired,” Hurley, Jr. said. “It’s also important that we can depend on our Chevy, and so far, it hasn’t let us down.” That’s not surprising since Chevy C3500 HD is ready for just about anything. Its standard **15,000-lb. GVWR*** along with a **5,000-lb. capacity solid I-beam front axle** is designed for **exceptional strength**. When properly equipped, its **GCWR[†] reaches 19,000 lbs.** That heavy-duty strength translates into **lasting durability** when combined with tapered leaf springs and stabilizer bars. Chevy C3500 HD Chassis Cab comes standard with a **powerful new Vortec Big Block 8100 V8 SFI engine** or an optional **6.5L Turbo-Diesel V8 engine**. Both engines are coupled with a standard five-speed manual transmission. A four-speed electronically controlled automatic is available, as well as a choice of three different wheelbases. And **four-wheel antilock brakes** are standard on every model. **Chevy C3500 HD Chassis Cab.** It’s one impressive performer.



James Hurley, Jr.,
Owner,
Hamilton-Glendale
Service Corp.,
Highland Park, Mich.

*Gross Vehicle Weight Rating. †Gross Combination Weight Rating.

IT NEVER TAKES A DAY OFF.



Silverado 3500 2WD Regular Cab Big Dooley Long Box Pickup shown in Summit White with available features.

ENGINE AVAILABILITY

SILVERADO

ENGINE	VORTEC 4300 V6 SFI ¹ RPO L35	VORTEC 4800 V6 SFI ¹ RPO L84	VORTEC 5300 V8 SFI ¹ RPO LM7	VORTEC 6000 V8 SFI ¹ RPO L64	VORTEC 8100 V8 SFI ¹ RPO L10	DURAMAX DIESEL 6600 V8 ² RPO L87
Silverado 1500 Reg. Cab	S	O	O	—	—	—
Silverado 1500 2WD Ext. Cab Short Box ³	S	O	O	—	—	—
Silverado 1500 2WD Ext. Cab Long Box ³	—	S	O	—	—	—
Silverado 1500 2WD 4x4 ³	—	S	O	—	—	—
Silverado 2500 Pickup	—	—	—	S	—	—
Silverado 2500HD Pickup	—	—	—	S	O	O
Silverado 3500 Pickup	—	—	—	S	O	O
Silverado 3500 Chassis Cab	—	—	—	S	O	O

S-10 PICKUP

ENGINE	VORTEC 2200 L4 SFI ¹ RPO L43	VORTEC 4300 V6 SFI ¹ RPO L35
2WD	S	O
4x4	—	S

C3500 HD

ENGINE	VORTEC 8100 V8 SFI ¹ RPO L10	6.5L TURBO-DIESEL V8 ³ RPO L65
2WD Chassis Cab	S	O

S — Standard. O — Optional. ¹ Sequential Fuel Injection. ² This diesel engine includes a specific warranty for 5 years or 100,000 miles, whichever comes first. A deductible per per repair visit applies after 3 years/36,000 miles. See your Chevy Truck dealer for terms and conditions of this limited warranty. ³ Vortec 5300 V8 engine is standard with LT trim.

GROSS COMBINATION WEIGHT RATINGS (GCWRs)

USING GCWRs TO DETERMINE ENGINE, TRANSMISSION AND REAR AXLE RATIO.

You can use your desired GCWR calculation to determine the powertrain you will require to tow a specific trailer with your Chevy vehicle. The following charts show you the maximum allowable GCWR based on available engines, transmissions and rear axle ratios. Model availability of the driveline combinations must be verified by your Chevy dealer for correct emissions equipment. The GCWR includes the total loaded weight of both the vehicle and the trailer.

GROSS COMBINATION WEIGHT RATINGS FOR TRAILERING — MANUAL TRANSMISSION

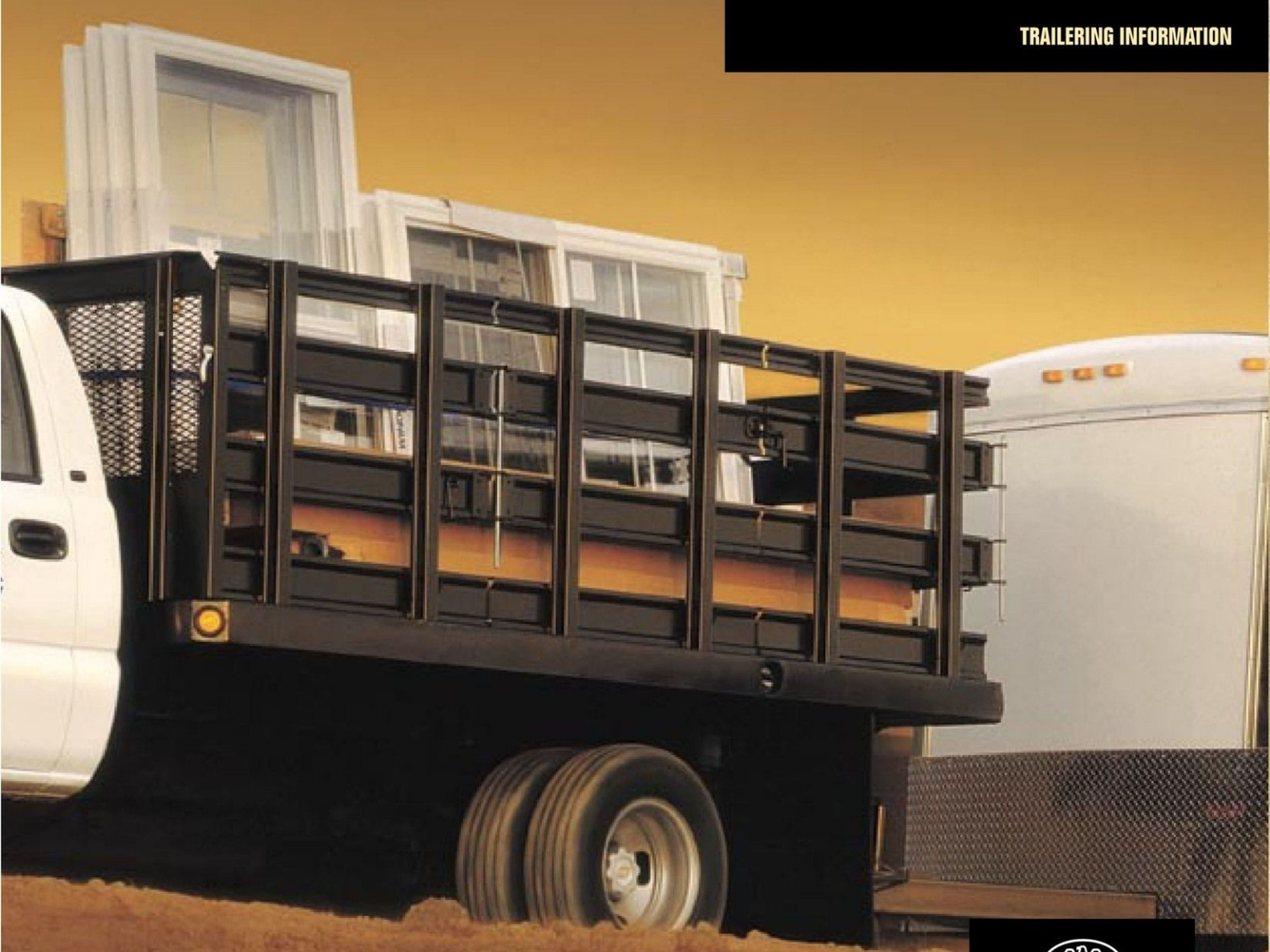
GCWR (LBS.)	5000	5500	7500	8000	8500	10,000	11,000	14,000	16,000	17,000	18,000	22,000
ENGINE	REAR AXLE RATIO											
Vortec 2200 L4 ¹	3.73	4.10										
Vortec 4300 V6 SFI (S-10) ¹			3.08	3.42	3.73							
Vortec 4300 V6 SFI (Silverado)				3.08	3.42	3.73						
Vortec 4800 V8 SFI						3.42	3.73	4.10				
Vortec 6000 V8 SFI							3.73	4.10				
Vortec 8100 V8 SFI									4.63	5.13	4.10	
6.5L Turbo-Diesel V8									4.63	5.13		
Duramax Diesel 6600 V8												3.73

¹ S-10 Pickup with the Xtreme Package is not engineered or equipped for towing.

GROSS COMBINATION WEIGHT RATINGS FOR TRAILERING — AUTOMATIC TRANSMISSION

GCWR (LBS.)	5500	6500	8000	9500	10,000	11,000	12,000	13,000	14,000	16,000	17,000	19,000	20,000	22,000
ENGINE	REAR AXLE RATIO													
Vortec 2200 L4 ¹	4.10													
Vortec 4300 V6 SFI (S-10) ¹		3.08		3.42	3.73 ²									
Vortec 4300 V6 SFI (Silverado)			3.08	3.42	3.73									
Vortec 4600 V8 SFI						3.42	3.73	4.10						
Vortec 5300 V8 SFI							3.42	3.73	4.10					
Vortec 6000 V8 SFI								3.73	4.10					
Vortec 8100 V8 SFI										4.63	5.13	3.73	4.10	
6.5L Turbo-Diesel V8										4.63	5.13			
Duramax 6600 Diesel V8														3.73

¹ S-10 Pickup with the Xtreme Package is not engineered or equipped for towing. ² GCWR reduced by 500 lbs. for S-10 Pickup 4x4 models with ZR2 Wide-Stance Sport Performance Package.



*Silverado 3500 2WD Regular Cab Chassis Cab in Summit White.
Shown with stake body from an independent supplier.
See the back cover for a note about alterations and warranties.*

Along with being designed to be **dependable and long-lasting**, **Chevy Trucks** provide the performance and capabilities for you to tow with confidence. **Powerful Vortec engines** have been engineered with a **broad power and torque band** to get and keep heavy loads moving. For even more power, the new Silverado 2500HD and 3500 models offer an available **Duramax Diesel 6600 V8 engine** or an available new **Big Block Vortec 8100 V8 engine**. Either engine can be coupled with an available **Allison 1000 Series five-speed automatic transmission** that includes **grade braking**. The standard six-speed manual transmission is a high-capacity design that includes a **"creeper" gear** for low-end performance when launching a heavily or fully loaded truck. Each Chevy Truck is also available with a host of standard trailering equipment, plus a complete range of trailering options. Whether you've equipped an S-10 Pickup to tow a small utility trailer or a C3500 HD Chassis Cab spec'd to haul a backhoe, **Chevy Trucks** can help meet your towing and trailering needs.

NOTE: This brochure shows many vehicles that have been altered or upfitted with equipment, bodies or components supplied to Chevrolet by independent suppliers. Chevrolet is not responsible for the safety or quality of design features, materials or workmanship of any alterations by such a supplier. See the back cover for further information about alterations and warranties.



NAHB
NATIONAL ASSOCIATION
OF HOME BUILDERS

The National Association of Home Builders (NAHB) has an important affinity relationship with Chevy Trucks. As "The Voice of America's Housing Industry," NAHB is dedicated to helping Americans pursue the dream of owning a home and ensuring that all consumers have safe, decent and affordable housing. NAHB members support communities across the country through more than 400 "Home Builders Care" local service projects.

For more information about the National Association of Home Builders, visit their web site at www.nahb.org.

TRAILERING BASICS

Towing a trailer involves all major vehicle systems of your Chevy Truck, including powertrain, steering, suspension and brake systems. Easy and safe trailering requires a properly equipped vehicle, additional trailering equipment and an appropriate trailer. It also requires loading both the vehicle and trailer properly, using safe driving techniques, meeting regional legal requirements and following break-in and maintenance schedules. You are responsible for being sure you have the appropriate equipment and hitch for your specific trailering situation. If you plan to tow a trailer, consult the Owner's Manual and speak to a trailering expert at your Chevrolet dealership or visit our web site at chevrolet.com. The charts in this brochure will assist in determining how to best equip your Chevy Truck for trailering. To help you understand the charts, consider these trailering factors:

Torque: Indicates the strength of the engine. Low-end torque reflects how much force is generated to get your vehicle moving.

Horsepower: Indicates how much work the engine does at a certain engine speed. At mid- to high-engine rpm, it's what keeps you moving at highway speeds.

Axle Ratio: Along with your vehicle's transmission gears, a higher rear axle ratio contributes to how much available torque and horsepower (mechanical leverage) can be applied to the drive wheels for launch and uphill performance. Higher rear axle ratios, however, sacrifice fuel economy when not trailering.

Ball Hitch Trailering: There are two types of ball hitches. A weight-carrying hitch consists of a ball and coupler with no means to distribute the hitch weight. It is used primarily for lightweight trailers. Heavier trailers, however, require a weight-distributing hitch which uses spring bars to transfer some of the hitch weight forward onto the tow vehicle's front axle and rearward onto the trailer's axle(s).

Fifth-Wheel or Gooseneck Trailering: Often used with the heaviest trailers, fifth-wheel or gooseneck hitches are mounted in a pickup's bed and attached to the truck's frame. The trailer's kingpin weight is located over or slightly in front of the tow vehicle's rear axle.

RGAWR and GVWR: The addition of trailer hitch weight cannot cause vehicle weights to exceed the Rear Gross Axle Weight Rating (RGAWR) or the Gross Vehicle Weight Rating (GVWR). These ratings can be found on the certification label located on the driver door or door frame.

GCWR: The Gross Combination Weight Rating (GCWR) is the total allowable weight of the completely loaded vehicle and trailer, including any passengers, cargo, equipment and conversion. A properly equipped tow vehicle and trailer at the maximum GCWR should be able to accelerate and merge with traffic, climb typical interstate grades at highway speeds, handle the combination on most road surfaces and stop adequately within a reasonable distance. The GCWR for your vehicle should not be exceeded.

Maximum Trailer Rating: This rating is determined by subtracting the tow vehicle's weight (curb weight) from the GCWR. When a base vehicle (curb) weight is used, additional passengers, equipment and cargo weight must be added and will reduce the maximum trailer rating.

Please Contact Us. For any additional information on Chevrolet truck products, call **1-800-950-2438**, or visit us on the Internet at chevrolet.com or chevrolet.com/csv. Also, you're invited to call the Chevy Commercial Specialty Vehicles Department on the CSV Express Line **(1-800-759-5550)** with questions about Chevy Commercial Vehicles, or for the location of your nearest CSV dealer.

Customer Assistance Center. The Chevrolet Customer Assistance Center has a special toll-free number: **1-800-222-1020**. It puts you in contact with Chevrolet specialists who can handle any product or service question or concern you may have with your new Chevy Commercial Truck.

New Vehicle Limited Warranty. The GM 3-year/36,000-mile (whichever comes first) limited warranty covers repairs for all 2001 Chevrolet Commercial Vehicles including labor and parts, to correct any defects in material or workmanship occurring during the warranty period. The complete vehicle (including tires) will be covered for 3 years or 36,000 miles, whichever comes first. There is also emissions control system coverage, which varies by geographical region. See your Chevrolet dealer for terms of this limited warranty.

An Important Note About Alterations and Warranties. Installations or alterations to the original equipment vehicle (or chassis) as distributed by General Motors are not covered by the General Motors New Vehicle Limited Warranty. The special body company, assembler, equipment installer or upfitter is solely responsible for warranties on the body or equipment and any alterations (or any effect of the alterations) to any of the parts, components, systems or assemblies installed by GM. General Motors is not responsible for the safety or quality of design features, materials, or workmanship of any alterations by such a supplier.

Updated Service Information. Chevrolet regularly sends its dealers useful service bulletins about Chevrolet products. Chevrolet monitors product performance in the field. We then prepare bulletins for servicing our products better. Now you can get these bulletins, too. Ask your dealer or, for ordering information, please call toll-free: **1-800-551-4123**.

Assembly. Chevrolets and their components are assembled or produced by different operating units of General Motors, its subsidiaries or suppliers to GM worldwide. We sometimes find it necessary to produce Chevrolet trucks with different or differently sourced components than originally scheduled. Since some options may be unavailable when your vehicle is assembled, we suggest that you verify that your vehicle includes the equipment you ordered or, if there are changes, that they are acceptable to you.

Engines. Chevy Trucks are equipped with engines produced by different operating units of GM, its subsidiaries or suppliers to GM worldwide.

Rust-Through Corrosion Protection. Chevy Trucks are designed and built to resist corrosion. All body sheet-metal components are warranted against rust-through corrosion for 6 years/100,000 miles (whichever comes first). Application of additional rust-inhibiting materials is not required and none is recommended. See your Chevrolet dealer for terms of this limited warranty.

Commercial Customer's Choice Program. Through the 2001 Commercial Customer's Choice Program, you can upfit your work trucks with a variety of toolbox or specialty packages at little or no additional cost. See your Chevrolet Commercial Specialty dealer for complete details.

An Important Note About Suppliers. The safety and productivity of your completed vehicle require that the addition of a body, equipment and/or any other type of alteration be performed in accordance with all applicable Federal Motor Vehicle Safety Standards and in accordance with prudent engineering principles. Vehicle completion and/or alterations should be performed only by professional, reputable intermediate and final-stage manufacturers or vehicle alterers. Consumers are urged to inquire as to the facilities, trained personnel and professional group affiliations of the intermediate and/or final-stage manufacturer or vehicle alterer that may install a body or equipment on your Chevrolet chassis or perform any type of alteration to your vehicle. Make sure your supplier uses the proper equipment to the exact specifications required to make your Chevrolet perform as it was intended.

A Word About This Brochure. We have tried to make this brochure as comprehensive and factual as possible. We reserve the right, however, to make changes at any time, without notice, in prices, colors, materials, equipment specifications, models and availability. Since some information may have been updated since the time of printing, please check with your Chevrolet dealer for complete details. Chevrolet reserves the right to lengthen or shorten the model year for any product for any reason, or to start and end model years at different times.

General Motors, GM, the GM Emblem, Chevrolet, the Chevrolet Emblem, Autotrac, Big Dooley, Crew Cab, Silverado, S-10, ZR2, Solar-Ray, Z71 and 1-800-CHEV-USA are registered trademarks and Allison, Chevy, Duramax, Vortec and Xtreme are trademarks of the General Motors Corporation. NABH is a registered trademark of The National Association of Home Builders. DeWALT is a registered trademark of DeWALT Tools. Terminix is a registered trademark of The ServiceMaster Company. ©2000 General Motors Corp. All rights reserved.



Litho in USA. September 2000

For additional information about Chevrolet vehicles, visit

chevrolet.com



America Online Keyword: Chevrolet

CHEVY TRUCKS  LIKE A ROCK