

GMC
TRUCK

R&V PICKUPS

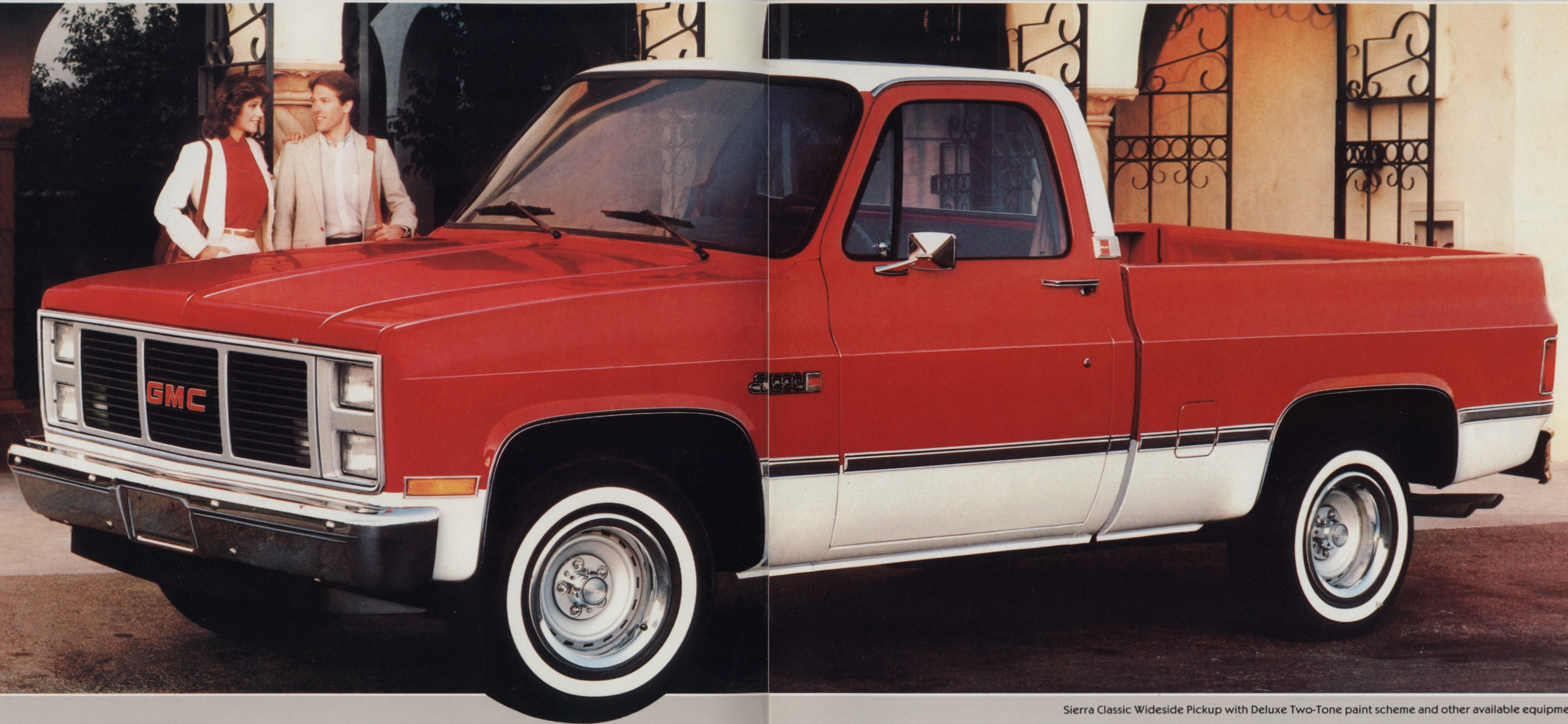
FULL-SIZE 2- AND 4-WD MODELS



GMC FULL-SIZE PICKUPS

TRUCK

GMCTRUCK
IT'S NOT JUST A TRUCK ANYMORE.



Sierra Classic Wideside Pickup with Deluxe Two-Tone paint scheme and other available equipment.

GMC Truck takes pride in offering full-size Pickups with a full measure of value. Trucks that combine job-tough strength with high-tech quality, good looks and luxury.

And for 1987, we've added more standard value under the hood for gasoline engine models along with refinements and improvements across the line. For instance, gasoline engines feature new Electronic Fuel Injection for impressive performance plus new higher-capacity Delco Freedom batteries and higher-output Delcotron generators.

CHOOSE THE PICKUP FOR YOU
When it comes to selection, GMC's line of full-size Pickups offers a wide range of models, appearance, power and performance, including 2-WD and 4-WD, V6 and V8 gasoline engines, and proven 6.2 Liter diesel power. We invite you to take a good look at the GMC Pickups in this brochure. Then ask your GMC Dealer for a demonstration drive.

GM-CAMS MAINTENANCE SYSTEM
GM's total computerized diagnostic and repair resources are ready to help with any gasoline engine

problems. Ask your participating GMC Dealer for details.

COMMITMENT PLUS QUALITY GMC TRUCKS

Commitment Plus is the most complete joint sales and service customer satisfaction program available on light-duty trucks today. It offers the following benefits:

- ☐ A thorough new vehicle inspection

- ☐ One full tank of fuel
- ☐ Complimentary 3000-mile maintenance service including oil change and oil filter at no extra charge

GMC Truck and GMC Dealerships are truly committed to making GMC Light Duty Trucks easy to live with. Our customers' total satisfaction is indeed our goal!

Applies to retail sales only, but not to Cab & Chassis models nor any Series 3500 Pickup model described in this catalog.

GMC PICKUP AND CAB & CHASSIS MODEL AVAILABILITY

MODEL TYPE	PICKUPS					CAB & CHASSIS			
	WIDESIDE CONVENTIONAL CAB		FENDERSIDE CONVENTIONAL CAB		WIDESIDE BONUS/CREW CAB	CONVENTIONAL CAB		BONUS/CREW CAB	
	117.5	131.5	117.5	131.5	164.5	131.5	135.5	159.5	164.5
BOX LENGTH, FT	6-1/2	8	6-1/2	8	8	—	—	—	—
R-1500 (2-WD)	X	X	X						
R-2500 (2-WD)		X		X	X	X			
R-2500/C6P (2-WD)		X		X					
R-3500 (2-WD)		X*		X	X*	X	X*	X*	X*
R-3500/C7C (2-WD)							X+	X+	X+
V-1500 (4-WD)	X	X	X						
V-2500 (4-WD)		X		X					
V-2500/C6P (4-WD)		X		X					
V-3500 (4-WD)		X*			X*	X	X*	X+	X*
V-3500/C7E (4-WD)							X+	X+	X+

C6P=HD Chassis
*Available with dual rear wheels

C7C=10,500-lb GVWR

C7E=11,000-lb GVWR
+Dual rear wheels standard

GMC SIERRA CLASSIC TRUCK



Sierra Classic Wideside Pickup with Rally wheels and other available equipment. Tires are supplied by various manufacturers.

TOP-OF-THE-LINE LUXURY

There's more to trucking than a smooth ride — and it's lavishly abundant in a GMC Sierra Classic Pickup. Body-pampering foam-cushioned bench seats are upholstered in Custom Vinyl or Custom Cloth in Charcoal, Blue, Mahogany, Saddle Tan, or Burgundy, depending on model.

Underfoot, there's plush wall-to-wall, deep-pile carpeting; overhead a cloth-covered insulated headliner. Vinyl door trim includes elegant brushed pewter-tone appliques, plus color-keyed cloth inserts and carpet trim.

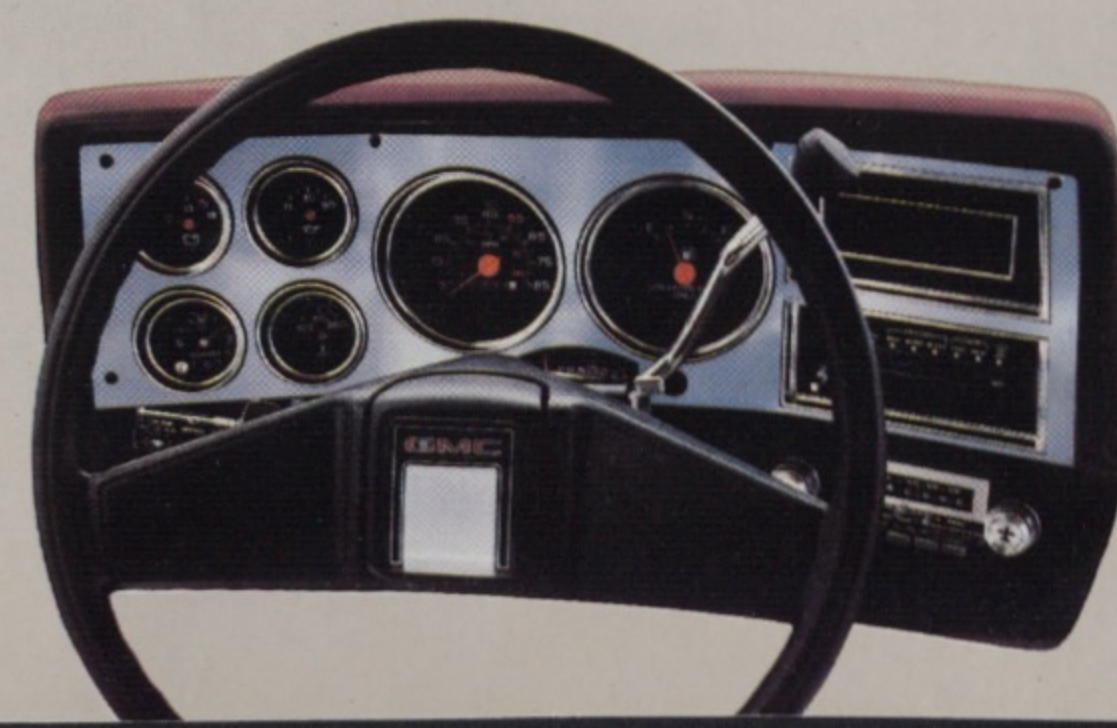
ULTRA COMFORT AND CONVENIENCE

Convenience touches include a vanity mirror on the right sunshade and a closing-assist strap and handy storage pocket on both front doors. Sierra Classic also has a dome lamp, cigarette lighter, lighted ashtray, and door switches for interior lights.



Sierra Classic interior with Custom Cloth bench seat

Sierra Classic instrument cluster has brushed pewter-tone trim and full-gage instrumentation.



GMC HIGH SIERRA TRUCK



High Sierra Wideside Pickup shown with available Deluxe Two-Tone paint, Rally wheels and other equipment.

STEP UP TO HIGH STYLE WITH AN EXTRA DASH OF POSH

If you want even more posh than our beautiful standard interior, step into High Sierra. At this level you'll find a full-length insulated headliner on Bonus/Crew Cab models; bright-trimmed black inserts on Regular Cab door trim panels; and bright trim on the instrument cluster. Floor covering is color-keyed rubber (black rubber for Bonus/Crew Cab rear floor).

SIT IN THE LAP OF LUXURY

In the High Sierra 2-Door Cab the full-foam bench seat is covered with your choice of durable fabrics: dual-tone woven cloth and vinyl or all-vinyl pigskin-grained trim. Colors are Charcoal, Blue, Mahogany, Saddle, or Burgundy.

ENJOY MORE CONVENIENCE, MORE QUIET

Front-door switches operate dome and map lights. There's an illuminated ashtray and a cigarette lighter. Cowl panel and cab back panel receive sound-deadening insulation.



High Sierra interior with Custom Vinyl seat trim

GMC SIERRA TRUCK



4-WD Sierra Series 1500 Wideside Pickup

STANDARD MEANS CRAFTED QUALITY

On Pickups with the standard 3-speed manual transmission (2-WD Series 1500 models only) or available automatic transmission, the shift lever is mounted on the steering column, clearing ample stretch-out space for the center passenger's legs. Controls for heater, plus available air conditioning and radio, are positioned for convenience.

BEAUTY AND BRAWN

Sierra Pickups prove that tough can be beautiful. The aerodynamically-styled cab is covered with high-gloss paint in your choice of ten brilliant solid colors (see back cover).

Sierra sparkles with bright trim starting at the chromed front bumper and bright front end moldings and continuing on to bright dual mirrors, bright hubcaps (except dual rear wheel models) and bright roof drip moldings. Best of all, there's no extra charge for this deluxe trim — it's standard!

See page 11 for available equipment to customize your GMC Pickup.



Sierra interior with Deluxe Cloth seat trim

GMC 4-WD TRACTION TRUCK



4-WD Sierra Classic Wideside Pickup shown with available equipment. Tires are supplied by various manufacturers.

READY FOR THE ROUGH

When you leave the road behind, it's a great feeling to realize that the 4-WD Pickup you're depending on to get you back has the tough construction and dependable performance resulting from 84 years of GMC know-how. All GMC 4-WD models are built on a rugged carbon steel frame. Standard handling features include: power steering, power front disc/rear drum brakes, and a 4-speed manual transmission with a floor-mounted shift lever.

36 WAYS TO GO 4-WHEELING IN A GMC

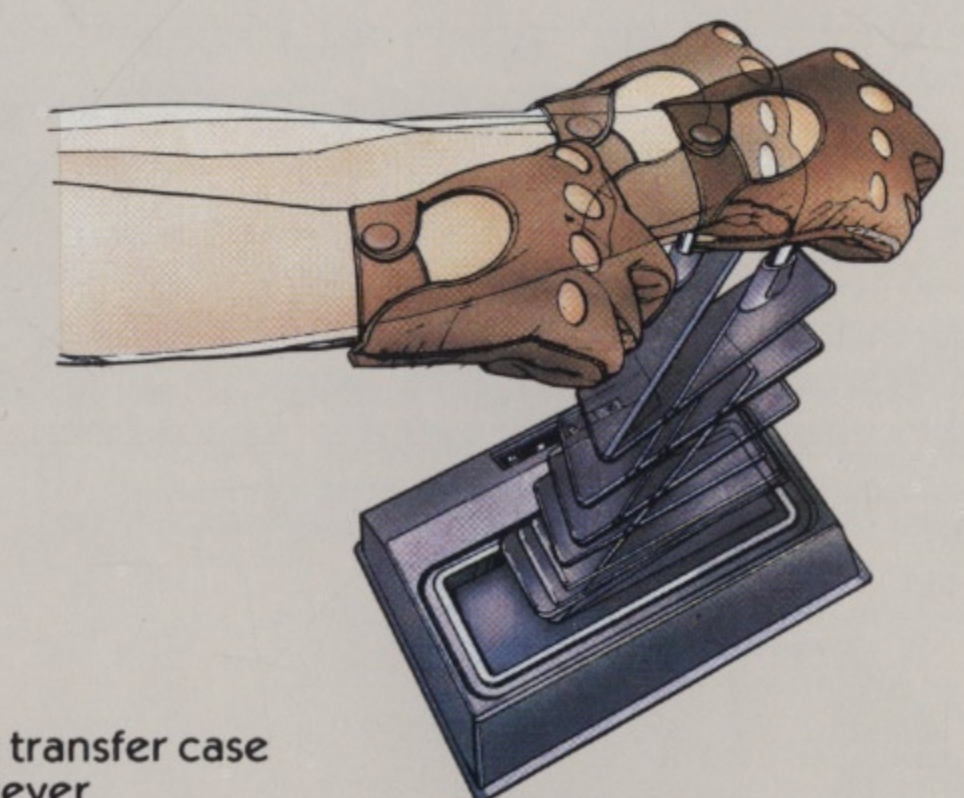
There are 36 ways to go off-roading in a GMC full-size 4-WD Truck: Match diesel or gasoline engines with Wideside or Fenderside Pickups; Regular Cab, Bonus Cab, or Crew Cab styles; Cab & Chassis models; short or long pickup boxes; 1/2-ton, 3/4-ton, or 1-ton nominal ratings; and single or dual rear wheels. And, all of these have a big selection of powertrains to match your needs.

MANUAL OR AUTOMATIC LOCKING FRONT HUBS

When in the 4-WD mode, you'll appreciate the dependability afforded by our standard, tough manual-locking front hubs...especially when you intend to use your GMC 4-WD for heavy-duty applications such as snowplowing. And, in such cases, we

recommend equipping your Series 1500/2500 4-WD vehicle with available heavy-duty front springs which include heavy-duty front and rear shock absorbers on Series 1500 models.

If you use your Series 1500 4-WD for less strenuous activities, you may prefer the convenience of available automatic hub locks, which permit no-stop shifting into 4-WD at speeds up to 25 mph. Ask your GMC Dealer's advice about the best 4-WD system for your needs.



4-WD transfer case shift lever

GMC BONUS & CREW CAB PICKUPS TRUCK

2-WD Series 3500 Sierra Classic Wideside Crew Cab with available dual rear wheels and 10,000-lb GVWR



Sierra Classic Crew Cab interior with Custom Cloth seat trim

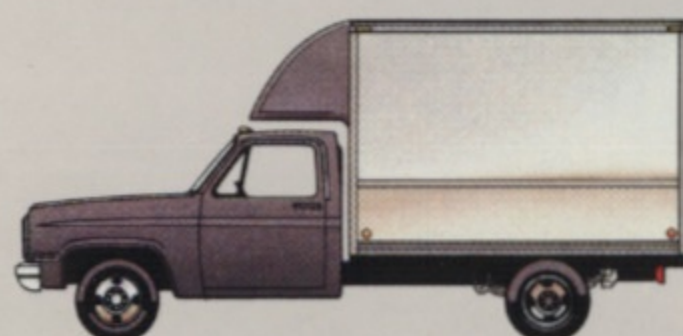
CAB & CHASSIS MODELS

Rugged GMC Cab & Chassis gasoline or diesel models can handle a variety of special bodies. Regular, Bonus or Crew Cab models on 2-WD or 4-WD chassis are adaptable to a wide range of vocational body configurations from 7' to 13' long. Ask for a Cab & Chassis Models Catalog.

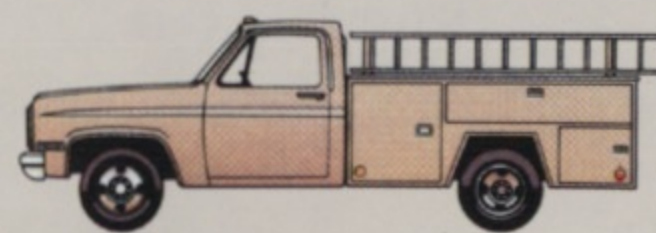
CAB & CHASSIS MODEL AVAILABILITY

MODEL	NOMINAL RATING AND TYPE	WHEELBASE (Inches)	OVERALL LENGTH (Inches)	MAXIMUM GVWR (Pounds)	MAXIMUM PAYLOAD (Pounds)†	
					GAS	DIESEL
CONVENTIONAL CAB						
TR20903	3/4 Ton, 2-WD			8600	4762	4270
TR30903	1 Ton, 2-WD	131.5	206.3	9000	4965	4501
TV30903	1 Ton, 4-WD			9200	4657	4199
TR31003	1 Ton, 2-WD	135.5	215.8	10,000*	5744	5279
TR31003/C7C+				10,500*	—	5746
TR31403	1 Ton, 2-WD	159.5	239.8	10,000*	5680	5206
TR31403/C7C+				10,500*	—	5673
TV31003	1 Ton, 4-WD	135.5	215.6	10,000*	5258	4794
TV31003/C7E+				11,000*	—	5790
TV31403	1 Ton, 4-WD	159.5	239.7	10,000*	5175	4700
TV31403/C7E+				11,000*	—	5675
CREW CAB/BONUS CAB						
TR30943	1 Ton, 2-WD	164.5	239.3	10,000*	5346@	4899@
TR30943/C7C+				10,500*	—	5277@
TV30943	1 Ton, 4-WD	164.5	239.3	10,000*	4806@	4339@
TV30943/C7E+				11,000*	—	5312@

† Payload diminishes proportionately with optional equipment and body weight
* GVW with dual rear wheels @ Crew Cab + Requires available large-size mirrors



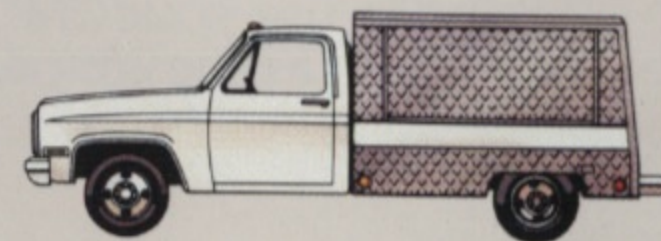
Cab & Chassis with van body



Cab & Chassis with utility body



Cab & Chassis with wrecker body



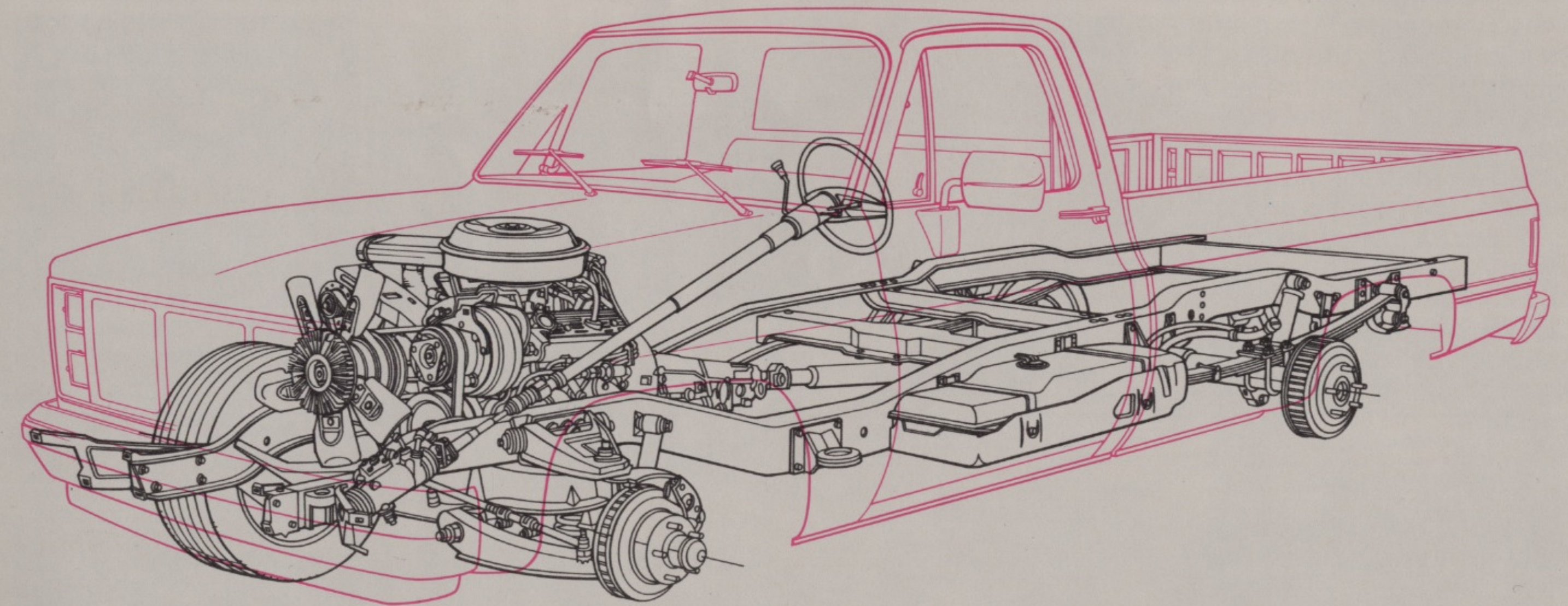
Cab & Chassis with food service body



Sierra Cab & Chassis with available dual rear wheels. Dump body and snowplow are available from aftermarket equipment suppliers.

Vocational bodies are supplied to GMC Dealers by outside suppliers, independently of GMC, which is not responsible for the safety or design features, materials, or workmanship of any alteration by any such supplier.

GMC QUALITY FEATURES TRUCK



DOUBLE WALLS OF STEEL

Inner and outer panels in hood, doors, front fenders, and cab upper panel help contribute to overall structural rigidity. Large panels are used in many areas, including front end sheet metal... helps reduce seams where rust may start. Bathtub-type wheelhousings have attached shields to help reduce road splash into engine compartment.

STURDY STEEL FRAME

A rigid, ladder-type frame of steel side rails and crossmembers provides a strong foundation for cab, pickup box and operating components.

TOUGH GIRDER-BEAM 2-WD FRONT SUSPENSION

On 2-WD models, control arms with computer-selected, matched coil springs move independently with the wheels to absorb road shocks and provide a smooth, balanced ride system.

4-WD FRONT SUSPENSION

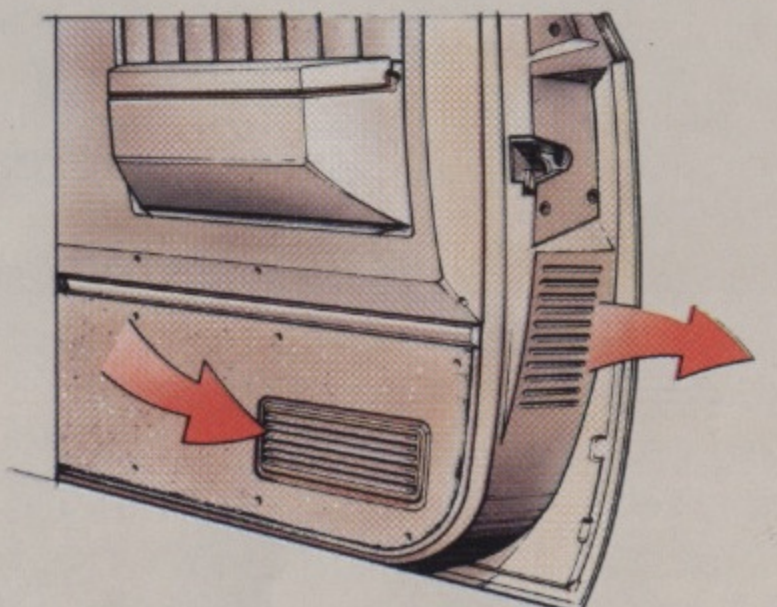
Tough off-road components include hypoid driving axle, leaf springs, and heavy-duty shock absorbers on selected models. Heavy-duty stabilizer bar provides good control on- and off-road.

WET-ARM WINDSHIELD WASHER SYSTEM

Efficient and quiet-operating system features washer nozzles mounted on wiper arms for a precise spray of washer fluid. Improves windshield washing.

POWER FLOW-THROUGH VENTILATION

A standard comfort feature that draws outside air in through a large cowl-integrated plenum chamber when the heater fan is on, routes it through the cab, and out through door-mounted vents.



Standard power flow-through ventilation

TWO-STAGE MULTILEAF REAR SUSPENSION

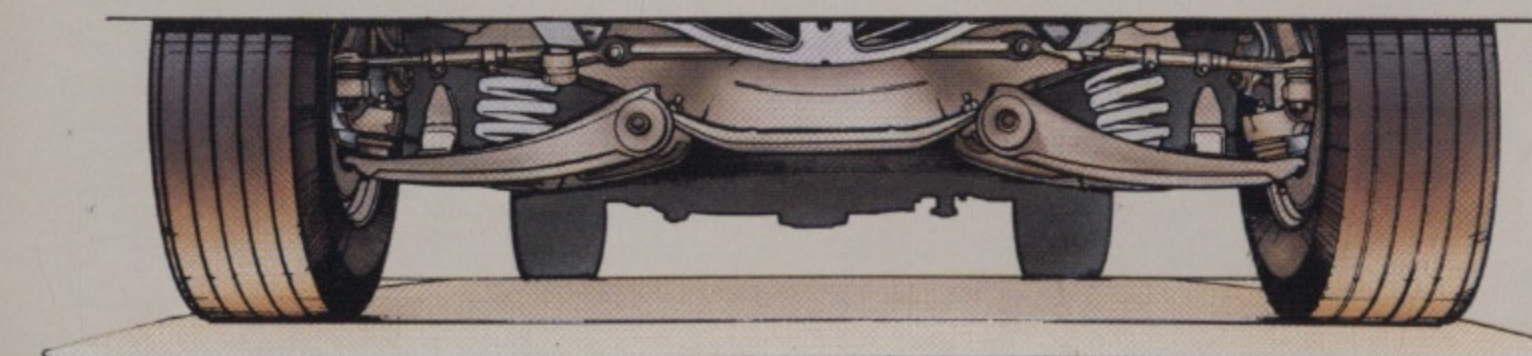
Multileaf springs contribute to excellent load control. Vari-rate spring design provides a smooth ride when empty, yet a progressively firmer support as load increases. Shock absorbers are counter-angled to help control power and brake hop.

BRAKES COMPUTER-MATCHED TO VEHICLE GVWR

System includes fin-cooled rear drum brakes and shielded front disc brakes with an audible lining-replacement warning signal. Both front and rear brakes are self-adjusting. Power brakes are standard on all Pickups except Series 1500 2-WD gasoline engine models with standard 4900-lb GVW rating for which they are available.

NEW DELCO FREEDOM BATTERIES

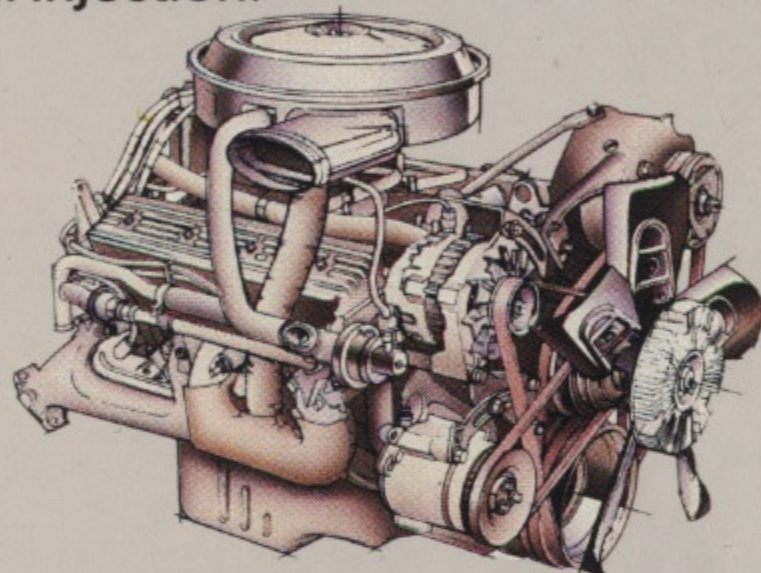
These new maintenance-free batteries with flat-top design provide higher cold-cranking current for all '87 gasoline engine applications (see Technical Information chart on back cover), making cold weather starts easier. Also, an increased performance starting motor is included when the available heavy-duty battery is ordered in conjunction with the 5.0 and 5.7 Liter V8 engines.



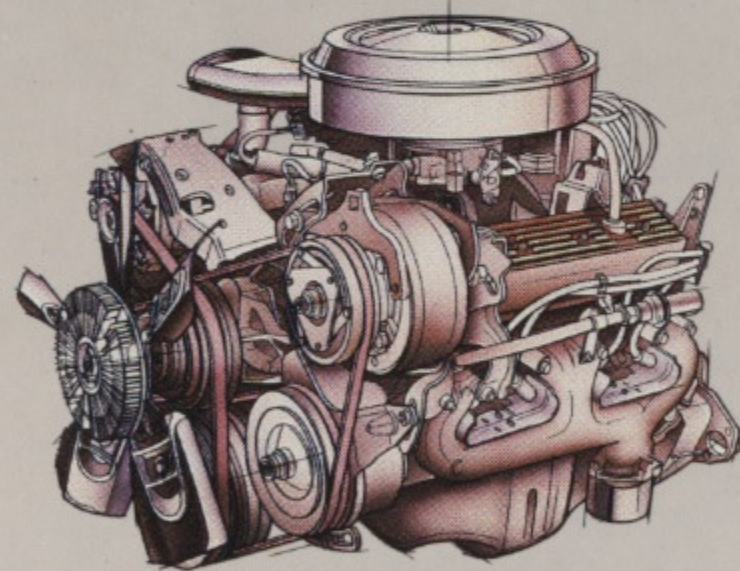
Tough Girder-Beam front suspension on 2-WD models

GMC HIGH-TECH POWER TRUCK

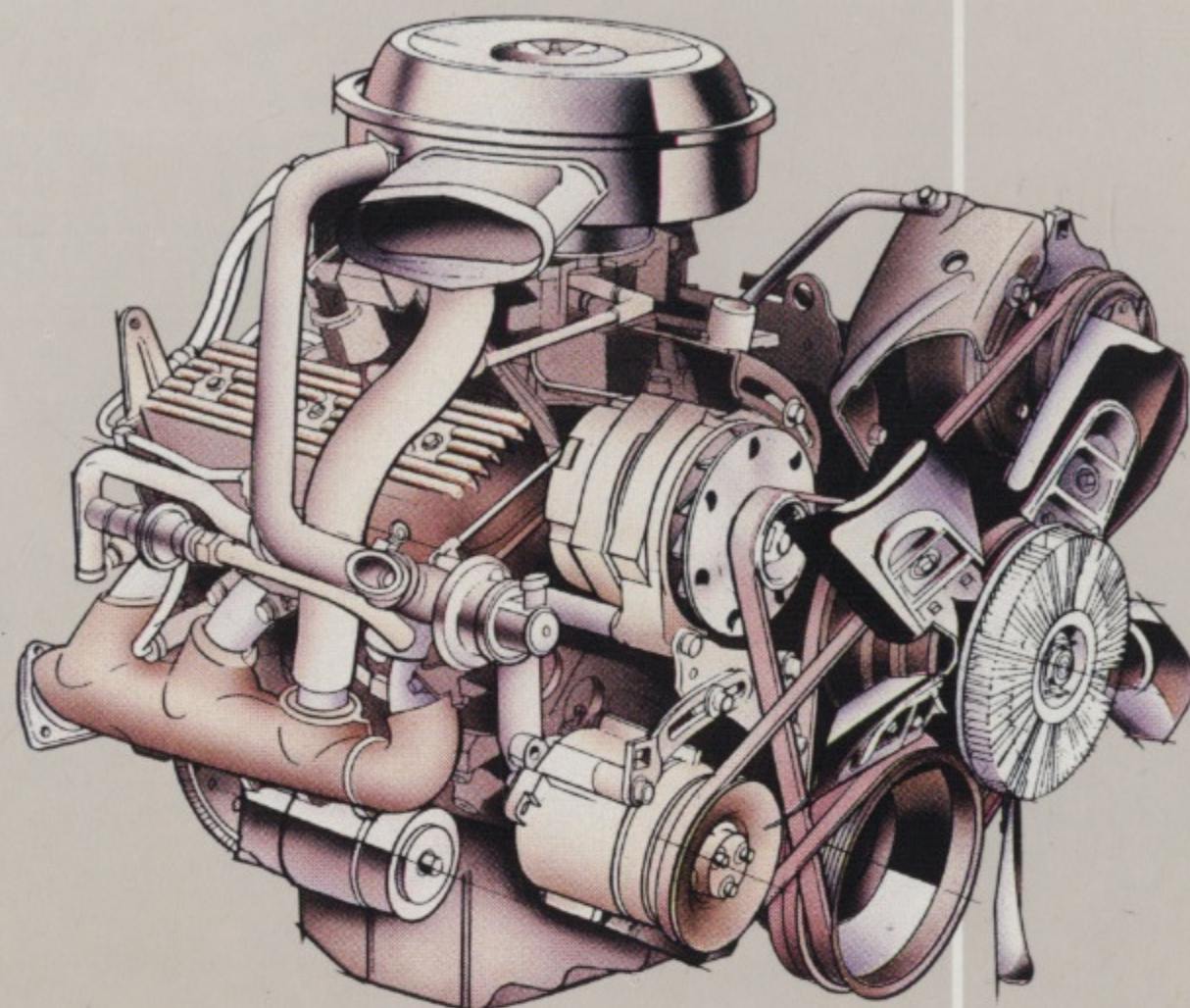
New for '87...computer-controlled Electronic Fuel Injection. Standard for all gasoline-engine Pickup models (and so identified on the pickup box tailgate), this advanced system replaces the conventional carburetor and fuel pump and provides a precise fuel-to-air ratio for improved combustion. The result is impressive reliability, performance and fuel efficiency. Also, Delcotron generator capacity is increased for gasoline engines (see Technical Information chart on back cover) to better handle the power demands of Electronic Fuel Injection.



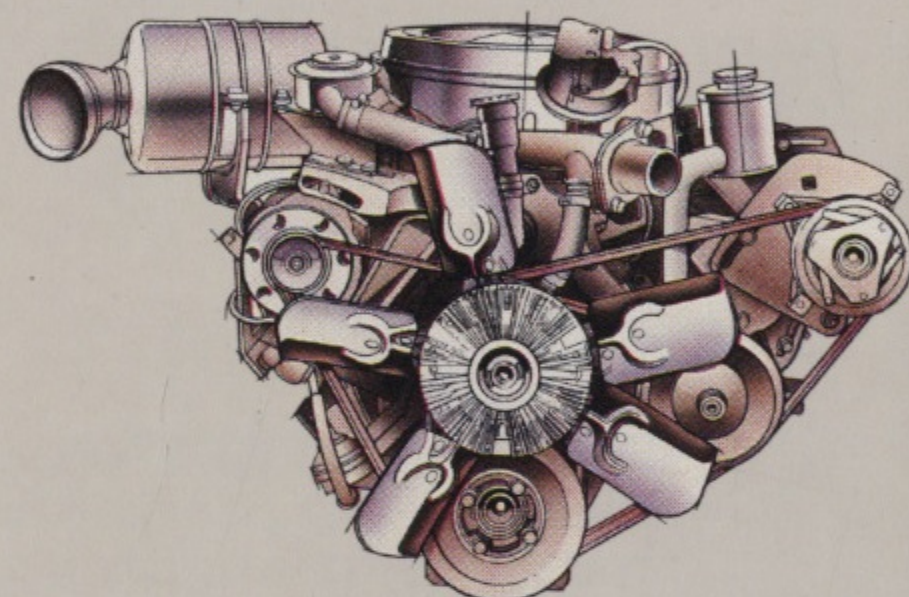
5.0 Liter (305 CID) V8. New aluminum, coolant-heated inlet manifolds and swirl port, fast burn chambers improve the combustion process and help to give this popular V8 higher horsepower and torque ratings for '87. Improved rocker cover and cylinder head design, plus one-piece oil pan gaskets further reduce oil leak concerns.



5.7 Liter (350 CID) V8. This high-performance engine offers higher horsepower and torque ratings for '87, with new swirl port fast burn combustion chambers for more

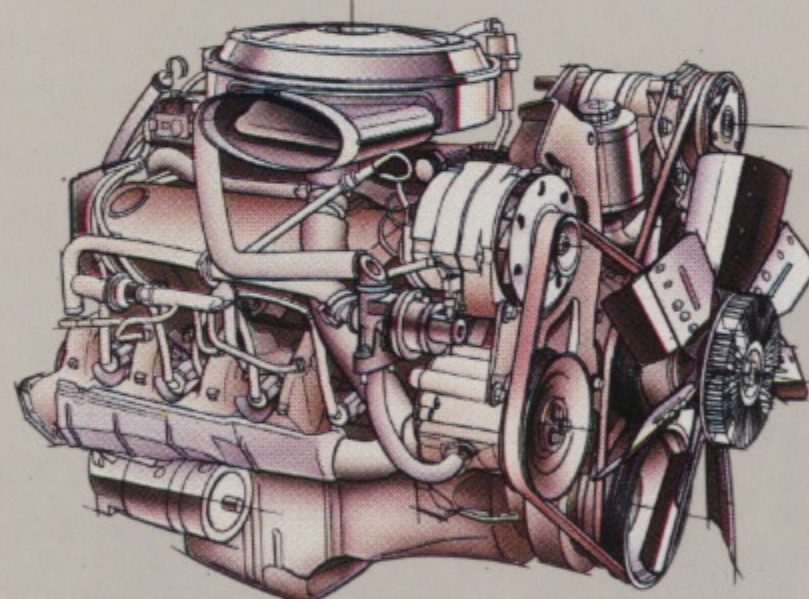


4.3 Liter (262 CID) Vortec V6. In addition to Electronic Fuel Injection, this high-compression V6 also features new low-friction, roller-hydraulic valve lifters for improved operating efficiency. Its advanced design also includes Vortec swirl port induction system for good fuel/air mix and a fast-burn combustion chamber design for more complete burning of fuel.



6.2 Liter (379.4 CID) Diesel. Standard for all diesel models, this naturally-aspirated tough truck V8 combines heavy work capability with diesel engine advantages. A sophisticated fuel filtration system helps protect against water and dirt in the fuel. The system is contained in one integral unit in the engine compartment for ease of service. Water-in-fuel and fuel-filter-change sensors incorporate a sending unit to a warning light on the instrument panel.

complete burning of fuel. New aluminum, coolant-heated inlet manifolds assure efficient fuel delivery. Engine integrity is improved with one-piece oil pan gaskets and new rocker cover seating design.



7.4 Liter (454 CID) V8. A large-displacement powerplant with plenty of torque to handle big jobs, the 7.4 Liter V8 is available for most gasoline-engine models with an 8500-lb-or-higher GVW rating. With available air conditioning, an electric booster fan is included for optimum engine cooling.

A WORD ABOUT ENGINES

GMC Trucks are equipped with engines produced at facilities operated by GM car and truck groups, subsidiaries or affiliated companies worldwide.

ENGINE TECHNICAL DATA

DISPLACEMENT/TYPE	GASOLINE				DIESEL	
	4.3L V6	5.0L V8	5.7L V8	7.4L V8	6.2L V8	6.2L V8
ORDERING CODE	LB4	L03	L05	L19	LH6 (1)(2)	LL4 (3)
BORE AND STROKE (in)	4.0 X 3.48	3.74 X 3.48	4.0 X 3.48	4.25 X 4.0	3.98 X 3.82	3.98 X 3.82
COMPRESSION RATIO	9.3 to 1	9.3 to 1	9.3 to 1 (2)	8.6 to 1 (3)	7.9 to 1	21.3 to 1
FUEL DELIVERY	Electronic Fuel Injection				Fuel Injection	
SAE NET HORSEPOWER @ RPM	160 @ 4000	170 @ 4000	210 @ 4000	185 @ 4000	230 @ 3600	130 @ 3600
SAE NET TORQUE (lb/ft) @ RPM	235 @ 2400	260 @ 2400	300 @ 2800	295 @ 2400	385 @ 1600	240 @ 2000

1-Not available in California 2-Models with GVWR's of 8500 lb or below 3-Models with GVWR's of 8501 lb or over

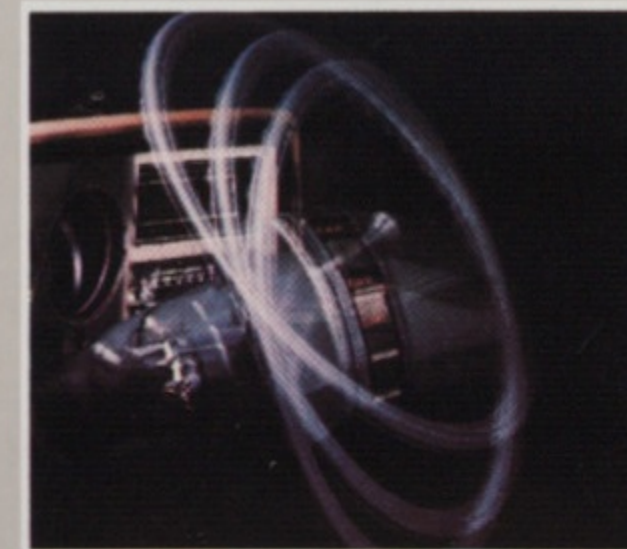
PICKUP ENGINE AVAILABILITY

PICKUP MODEL	GASOLINE				DIESEL	
	4.3L V6 (LB4)	5.0L V8 (L03)	5.7L V8 (L05)	7.4L V8 (L19)	6.2L V8 (LH6)	6.2L V8 (LL4)
TR107-10903	S	A	A	—	S*	—
TR20903	S	A	A	—	S*	—
TR20903 & C6P	—	—	S	A	—	S
TR20943	—	—	S	A	—	S
TR30903	—	—	S	A	—	S
TR30943	—	—	S	A	—	S
TV107-10903	S	A	A	—	S*	—
TV20903	—	—	S	—	S*	—
TV20903 & C6P	—	—	S	—	—	S
TV30903	—	—	S	A	—	S
TV30943	—	—	S	A	—	S

S=Standard A=Available *Except California

GMC AVAILABLE EQUIPMENT TRUCK

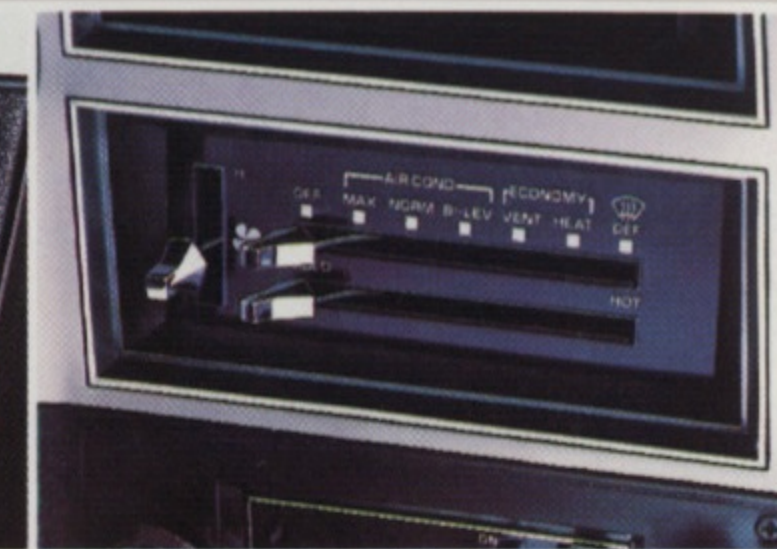
Comfortilt steering wheel



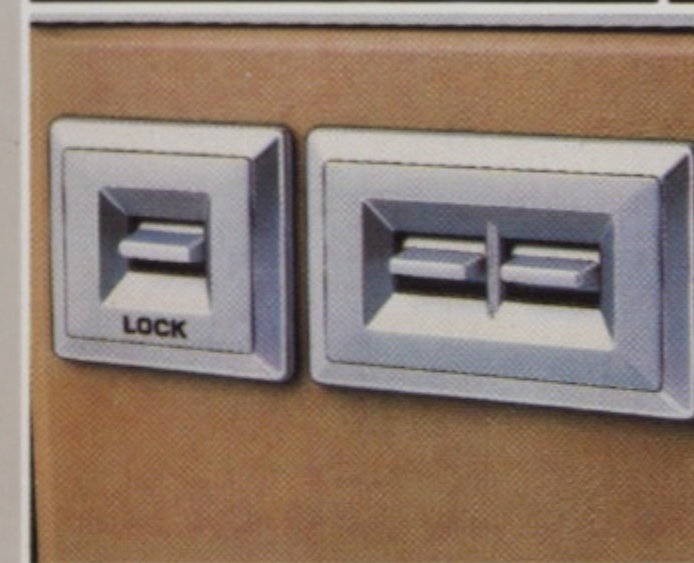
Delco AM/FM stereo radio



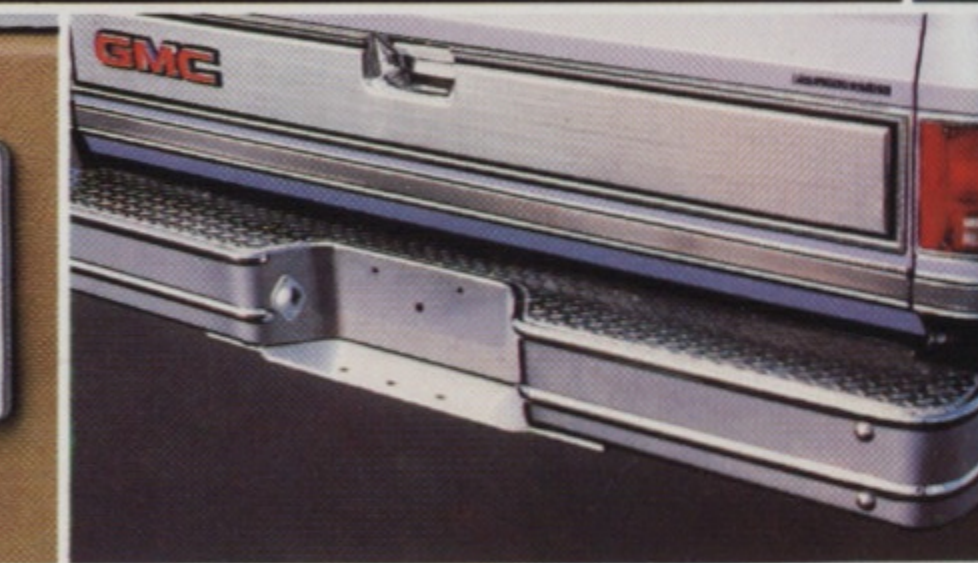
Air conditioning



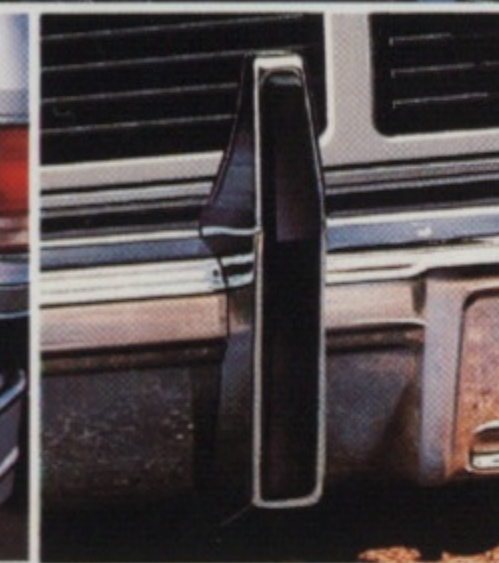
Below eyeline mirrors



Power windows and/or power door locks



Rear step bumper



Chromed front bumper guards

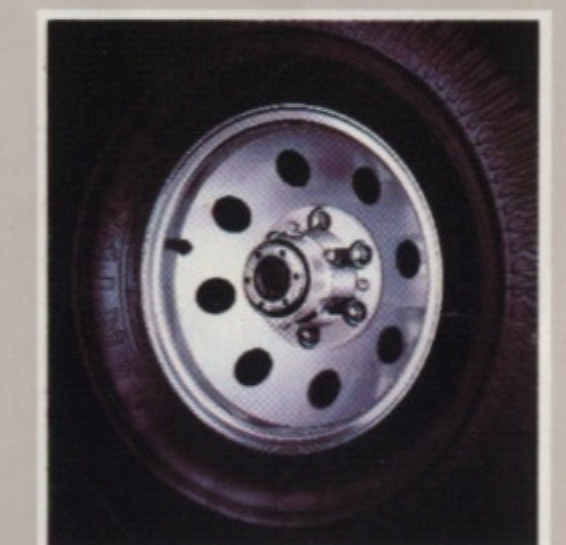


Cargo area lamp

GMC Pickups offer a variety of available options, some of which are depicted on this page. You may also wish to consider some of these items: ☐ Halogen hi-beam headlamps ☐ Roof marker lamps ☐ 4-WD automatic locking front hubs ☐ Front tow hooks ☐ Auxiliary Delco Freedom battery ☐ HD radiator ☐ Engine oil cooler ☐ Engine block heater ☐ Locking differential rear axle ☐ Dual rear wheels ☐ Selected highway and on/off road tires.



Rally wheels



Cast aluminum wheels

IMPORTANT! A WORD ABOUT THIS CATALOG We have tried to make this catalog as comprehensive and factual as possible and we hope you find it helpful. However, since the time of printing, some of the information you'll find here may have been updated. Also, some of the equipment shown or described throughout this catalog is available as factory-installed options, as dealer accessories, and as specialized equipment from various independent suppliers at extra cost. Your dealer has details and, before ordering, you should ask him to bring you up to date.

The right is reserved to make changes at any time, without notice, in prices, colors, materials, equipment, specifications, and models. Check with your GMC Dealer for complete information.

A WORD ABOUT ASSEMBLY, COMPONENTS, AND OPTIONAL EQUIPMENT IN THESE GMC PRODUCTS:

The GMC Trucks described in this catalog are assembled at facilities operated by General Motors. These vehicles incorporate thousands of different components produced by car and truck groups and various component divisions of GM and by various suppliers worldwide to General Motors. From time to time during the manufacturing process, it may be necessary, in order to meet public demand for particular vehicles or equipment, or to meet federally mandated emissions, safety, and fuel economy requirements, or for other reasons, to produce GMC products with different components or differently

sourced components than initially scheduled. All such components have been approved for use in GMC products and will provide the quality performance associated with the GMC name.

With respect to extra-cost optional equipment, make certain you specify the type of equipment you desire on your vehicle when ordering it from your dealer. Some options may be unavailable when your truck is built. Your dealer receives advice regarding the current availability of options. You may ask the dealer for this information. GM also requests the dealer to advise you if an option you ordered is unavailable. We suggest that you verify that your truck includes the optional equipment you ordered, or, if there are changes, that they are acceptable to you.

These vehicles also are available under the Chevrolet nameplate (Chevrolet Pickup Series R and V10-20-30 and Chassis-Cab Series R20-30 and V30).

A WORD ABOUT UPDATED SERVICE INFORMATION

GMC Truck and Coach Operation regularly sends its dealers useful service bulletins about GMC Truck products. GMC Truck and Coach Operation monitors product performance in the field. We then prepare bulletins for servicing our products better. Now you can get these bulletins, too. Ask your dealer. To get ordering information, call toll free 1-800-551-4123.

TECHNICAL INFORMATION

PICKUP MODEL TYPE		2-WHEEL DRIVE			
SERIES		R-1500	R-2500	R-2500	R-3500
GVW RATING (lb)	Standard	4900 (3)	6400	8600 (1)	9000
	Maximum	6100	7200	—	10,000
ENGINES		(see engine chart on Page 10; consult your GMC Dealer for further powertrain details)			
FRONT SUSPENSION		independent, coil springs			
Capacity (lb)		2950 (3)	3800	3800	3800 (4)
Spring capacity (lb) (5)	Standard	1475 (3)	1750	1900	1900 (4)
	Optional	(6)	1900	—	—
Shock absorber diameter (mm)	Standard	25	25	32	32
	Optional	32	32	—	—
Stabilizer bar diameter (in)	Standard	—	—	1.06	—
	Optional	1.06	1.06/1.25	1.25	1.06/1.25
REAR SUSPENSION		Salisbury axle, leaf springs			
Axle capacity (lb)		3750	5700	6000 (4)	7500
Spring capacity (lb) (5)	Standard	1550	2000	3000	3500
	Optional	1750, 2000	2600, 3000	—	3750
Shock absorber diameter (mm)	Standard	25	25	32	32
	Optional	32	32	—	—
BRAKES		hydraulic, disc/drum			
Standard booster	Gasoline models	vac (8)	vac	vac	hyd
	Diesel models	hydraulic			
Parking		cable to rear wheels			
STEERING	Gasoline models	std: manual; opt: power			
	Diesel models	std: power			
TIRES		various types/sizes			
Standard (radial ply)		P195/75R15(3)	LT215/85R16C	LT235/85R16D/E	LT235/85R16D/E
Optional		(consult your GMC Dealer for details)			
FUEL TANK CAPACITY (gal)					
Standard single		16 (9), 20	20	20	20
Optional dual (each)	Gas models	16	16	20	20
	Diesel models	16 (9), 20	20	20	20
BATTERY		12-volt, maintenance-free			
CCA rating	Gasoline models	std: 525; opt: 630			
	Diesel models	std: dual 540			
GENERATOR		12-volt, alternating current			
Amp rating	Gasoline models	std: 66 (94 with opt. air conditioning)			
	Diesel models	std: 66			

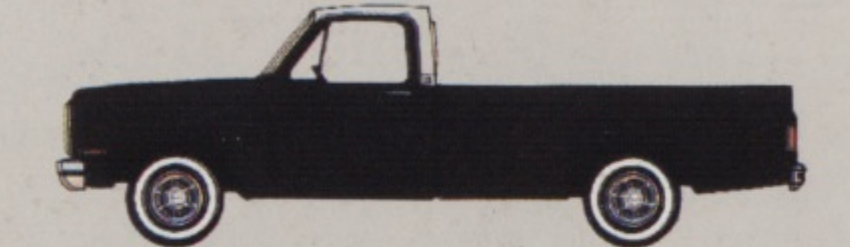
PICKUP MODEL TYPE		4-WHEEL DRIVE			
SERIES		V-1500	V-2500 (2)	V-2500/C6P	V-3500
GVW RATING (lb)	Standard	6100	6600	8600	9200
	Maximum	—	—	—	10,000
ENGINES		(see engine chart on Page 10; consult your GMC Dealer for further powertrain details)			
FRONT SUSPENSION		salisbury axle, leaf springs			
Capacity (lb)		3600	3800	3800	4500
Spring capacity (lb) (5)	Standard	1850	1850	1850	2250
	Optional	2250 (7)	2250	2250	—
Shock absorber diameter (mm)	Standard	25	25	32	32
	Optional	32	32	—	—
Stabilizer bar diameter (in)	Standard	1.25	1.25	1.25	1.25
	Optional	—	—	—	—
REAR SUSPENSION		Salisbury axle, leaf springs			
Axle capacity (lb)		3750	5700	6000	7500
Spring capacity (lb) (5)	Standard	1875	2000	3000	3500
	Optional	—	—	—	3750
Shock absorber diameter (mm)	Standard	25	25	32	32
	Optional	32	32	—	—
BRAKES		hydraulic, disc/drum			
Standard booster	Gasoline models	vac	vac	vac	hyd
	Diesel models	hydraulic			
Parking		cable to rear wheels			
STEERING	Gasoline models	std: power			
	Diesel models	std: power			
TIRES		various types/sizes			
Standard (radial ply)		P235/75R15	LT215/85R16C	LT235/85R16D/E	LT235/85R16D/E
Optional		(consult your GMC Dealer for details)			
FUEL TANK CAPACITY (gal)					
Standard single		16 (9), 20	20	20	20
Optional dual (each)	Gas models	16	16	20	20
	Diesel models	16 (9), 20	20	20	20
BATTERY		12-volt, maintenance-free			
CCA rating	Gasoline models	std: 525; opt: 630			
	Diesel models	std: dual 540			
GENERATOR		12-volt, alternating current			
Amp rating	Gasoline models	std: 66 (94 with opt. air conditioning)			
	Diesel models	std: 66			

AVAILABLE PAINT SCHEMES

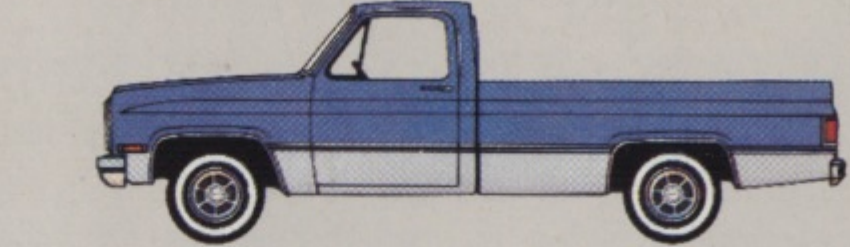
CCA= Cold Cranking Amps
1- Requires C6P on 2-door cab models.
2- Not available in California.
3- Varies for diesel models. Consult your GMC Dealer.
4- Varies for 4-door cab models. Consult your GMC Dealer.
5- At ground, each.
6- 1625/1700 lbs; for gas models only.
7- Recommended for snowplow usage only.
8- Manual brakes at 4900-lb GVWR; vacuum power brakes available.
9- 117.5" wheelbase models only.



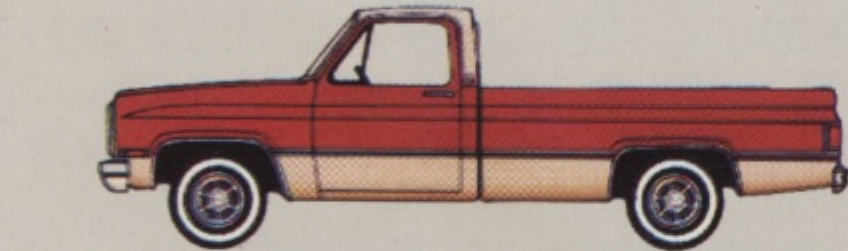
Standard Solid Color paint. See colors on this page. Ask about available Value Decor package.



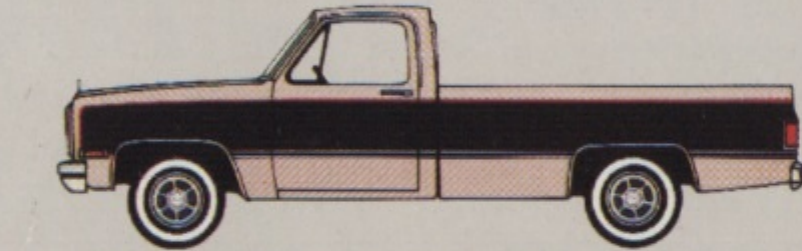
Available ZY2 Conventional Two-Tone includes back panel beltline molding on models where not already included.



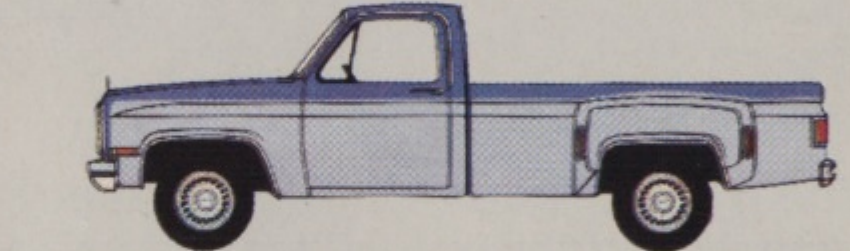
Available ZY3 Special Two-Tone for single-rear-wheel Widesides includes body side/rear moldings, wheel opening moldings, and bright trim for front side marker and taillamps on models where not already included.



Available ZY4 Deluxe Two-Tone combines paint placement and moldings of Conventional and Special Two-Tone schemes (single-rear-wheel Wideside models only).



Available ZY5 Exterior Decor package for single-rear-wheel Widesides. Includes moldings in Special Two-Tone scheme plus dual-tone body side/rear decal striping keyed to body color. Stand-up hood ornament included on gasoline models. On Sierra Classic, back panel beltline molding is deleted.



Available ZY9 Special Heavy Hauler Two-Tone paint and trim for dual-rear-wheel Wideside Pickups.

EXTERIOR COLORS



Frost White Steel Gray(M) Midnight Black Light Blue(M) Midnight Blue Canyon Copper(M) Doeskin Tan Nevada Gold(M) Indian Bronze(M) Apple Red

NOTE: Due to printing irregularities, the colors shown may vary from actual tones. Ask your GMC Dealer to show you actual paint chips and fabric swatches. (M) = Metallic.



GMAC

At your GMC Truck Dealer, financing or leasing your new GMC Truck is as easy as saying GMAC...the financial services people from General Motors.

GM

MARK OF EXCELLENCE

8979-87 USA
Litho in Canada