

2011 YUKON & YUKON XL



GMC
Y U K O N

FULL SIZE. FOR THOSE WHO LIVE FULL LIVES.

For big families, big challenges and the toughest driving conditions, the capability and confidence of a full-size SUV aren't a luxury. They're a necessity. In this class of vehicle, GMC's Yukons represent the best the industry has to offer. They are Best-in-Class in terms of available power, torque and towing capacity.* Remarkably, they also beat all comers on fuel efficiency, regardless of whether you choose a 2WD or a 4x4 drivetrain.** Advanced technologies like gas-saving Active Fuel Management®, E85 fuel compatibility and a standard StabiliTrak® electronic stability control system help put even more distance between today's Yukons and the competition. They're even engineered to bolster your peace of mind, with a complement of six air bags, OnStar®, and, of course, the best warranty coverage in Canada. The 2011 Yukons. Isn't it time you stepped up to professional grade?

*Based on Ward's 2010 Large SUV segment and latest 2010 Model Year competitive data for comparably equipped vehicles available at time of printing. Excludes other GM models.

**2011 Yukon fuel consumption ratings based on GM testing in accordance with approved Transport Canada test methods. Competitive fuel consumption ratings based on Natural Resources Canada's 2010 Fuel Consumption Guide for Ward's 2010 Large SUV segment. Your actual fuel consumption may vary.



LEFT: YUKON HYBRID DENALI, shown in Onyx Black.
RIGHT: YUKON HYBRID SLT, shown in Pure Silver Metallic.

THEY DO WHAT OTHERS CAN'T.

With a Yukon or Yukon XL in your driveway, the big jobs don't look quite so big any more. The standard Vortec 5.3-litre V8* generates a robust 320 horsepower — the most of any standard engine in the class.** Yet a Yukon 4x4 consumes just 9.5 litres of fuel per 100 kilometres on the highway and 14.4 litres per 100 kilometres in the city — significantly less than any direct competitor.† Need to tow a trailer? Every model comes with a standard Heavy Duty Trailing Package, including a hitch platform, a seven-wire harness and provisions to install a trailer brake controller. Yukon is rated to tow up to 3856 kg (8500 lb.), and XL 2500 can tow up to a massive 4355 kg (9600 lb.). Nothing else in the class can touch it.**

* Yukon and Yukon XL 1500 models. Yukon XL 2500 models feature a standard 352-hp Vortec 6.0L V8.

** Based on Ward's 2010 Large SUV segment and latest 2010 Model Year competitive data for comparably equipped vehicles available at time of printing. Excludes other GM models.

† 2011 Yukon fuel consumption ratings based on GM testing in accordance with approved Transport Canada test methods. Competitive fuel consumption ratings based on Natural Resources Canada's 2010 Fuel Consumption Guide for Ward's 2010 Large SUV segment. Your actual fuel consumption may vary. Excludes other GM models.



YUKON SLT, shown in Pure Silver Metallic.

DENALI. PEAK STYLE. PEAK PERFORMANCE.

In the world of full-size SUVs, it just doesn't get better than Yukon Denali and Yukon XL Denali. With their trademark Denali honeycomb grilles, gleaming 20-inch chromed aluminum wheels and standard body-colour assist steps, these are vehicles that turn heads. They're brilliant performers as well. The sophisticated 403-horsepower Vortec 6.2-litre V8 under the hood is the most powerful engine offered in the segment,* yet it's more fuel-efficient than the less muscular engines you'll find in the Ford Expedition and the Nissan Armada.** Denali owners enjoy bragging rights on technology, too, thanks to standard features like full-time all-wheel drive and an AutoRide™ road-sensing suspension. The Yukon Denali family also includes the most technologically advanced full-size SUV you can buy: Yukon Hybrid Denali.

* Based on Ward's 2010 Large SUV segment and latest 2010 Model Year competitive data for comparably equipped vehicles available at time of printing. Excludes other GM models.
** 2011 Yukon Denali fuel consumption ratings based on GM testing in accordance with approved Transport Canada test methods. Competitive fuel consumption ratings based on Natural Resources Canada's 2010 Fuel Consumption Guide. Your actual fuel consumption may vary.

DENALI FEATURES

- 403-hp Vortec 6.2L V8 with Variable Valve Timing (VVT)
- Trailering Heavy-Duty Cooling Package
- Full-time all-wheel drive
- AutoRide suspension
- 20" chromed aluminum wheels
- Denali-exclusive chrome honeycomb grille
- Premium heated power exterior mirrors with power foldaway feature, integrated turn signals and driver-side auto-dimming feature and ground illumination
- Colour-keyed assist steps with chrome inserts
- Luggage rack side rails with bright insert, body-coloured end caps and black cross bars
- Power liftgate
- Power sunroof

HYBRID DENALI FEATURES

- 332-hp Vortec 6.0L L1VC V8 with Active Fuel Management (AFM)
- 4-speed electronic variable automatic transmission
- Regenerating Brake System
- 2-speed Autotrac™ 4x4 transfer case
- Magnetic Ride Control® suspension package
- 22" aluminum wheels
- Denali-exclusive chrome mesh grille
- Premium heated power exterior mirrors with power foldaway feature, integrated turn signals, driver-side auto-dimming feature and ground illumination
- Colour-keyed assist steps with chrome inserts
- Luggage rack side rails and cross bars, black
- Power liftgate
- Power sunroof



YUKON HYBRID DENALI, shown in Onyx Black.

DENALI. THE BEST OF THE GOOD LIFE.

On the inside, Yukon Denali and Yukon XL Denali offer a uniquely satisfying brand of luxury and style. The ride is extremely quiet, thanks to a Denali-exclusive package of sound-deadening features. A tri-zone automatic climate control system and heated and cooled driver and front-passenger seats – leather-appointed, of course – help keep you comfortable regardless of the weather. And, for an extra measure of comfort on those cold winter mornings, a heated wood-accented steering wheel is standard. Denali models also provide the best in entertainment, with a standard Bose® ten-speaker audio system, XM Satellite Radio™ and a rear DVD Entertainment System with a roof-mounted LCD display screen. A DVD-based Navigation System is also available.

DENALI FEATURES

- Heated and cooled perforated-leather-appointed full-featured front bucket seats
- Heated leather-appointed 2nd-row bucket seats with power release fold-and-tumble feature
- Heated leather-wrapped steering wheel with wood trim
- Auto-dimming interior rear-view mirror
- Rear DVD Entertainment System with overhead screen
- 10-speaker Bose Centre Channel audio system

HYBRID DENALI FEATURES

- Heated and cooled perforated-leather-appointed full-featured front bucket seats
- 60/40 leather-appointed split-folding bench 2nd-row seat
- DVD-based Navigation System with Hybrid power flow display
- Rearview camera system
- 115-volt, 3-prong, power outlet
- Leather-wrapped steering wheel with wood trim
- Auto-dimming interior rear-view mirror
- 10-speaker Bose Centre Channel audio system



YUKON DENALI, shown with standard perforated leather-appointed seats in Ebony.

HYBRID. UNMATCHED FULL-SIZE SUV TECHNOLOGY.

The first hybrid-powered full-size SUVs – and still the only vehicles of their type – Yukon Hybrid SLT and Yukon Hybrid Denali offer genuine GMC capability, seating for up to eight and a trailer rating of up to 2812 kg (6200 lb.). Yet, in city driving, they consume less fuel than V6-powered sedans like the Toyota Camry, Honda Accord and Ford Fusion.* To make it happen, GMC's engineers created a highly advanced two-mode hybrid system, incorporating a 300-volt nickel-metal hydride Energy Storage System (ESS), an advanced Electronically Variable Transmission (EVT) and a regenerative braking system. The result is a pair of stylish, powerful, highly functional SUVs that use just 10.1 litres per 100 kilometres in city driving.** How times have changed.

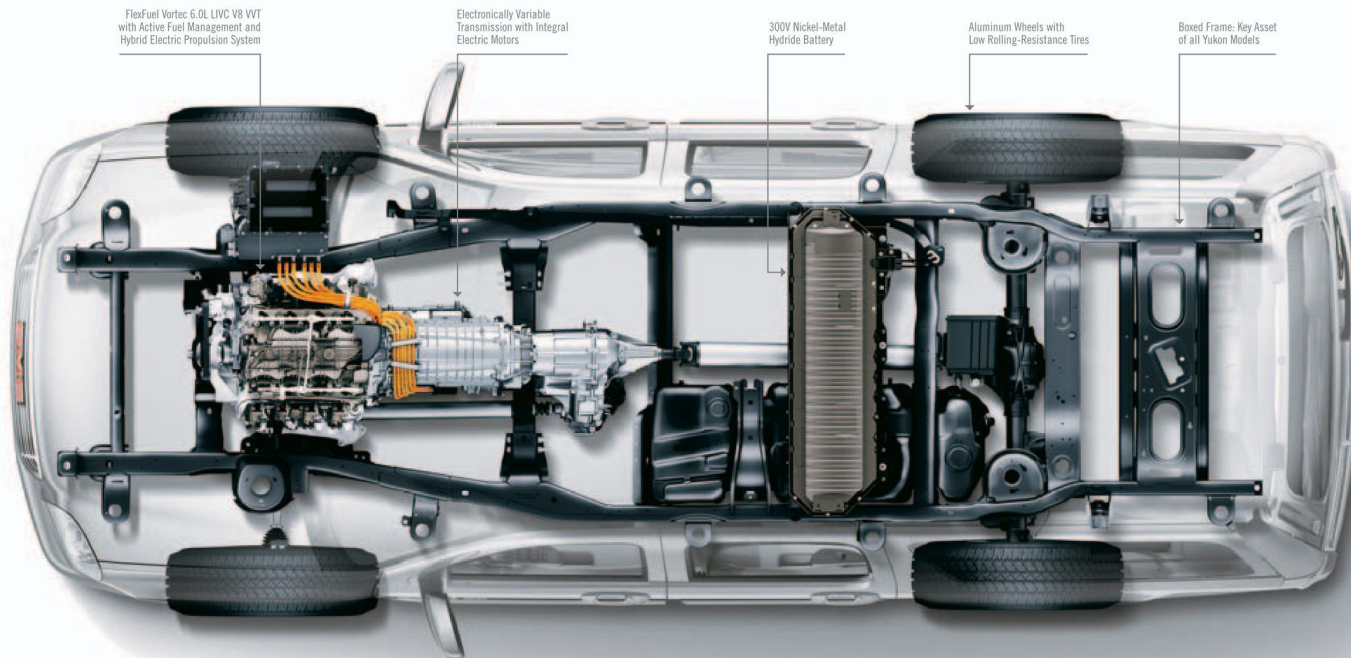
* 2011 Yukon Hybrid fuel consumption ratings based on GM testing in accordance with approved Transport Canada test methods. Competitive fuel consumption ratings based on Natural Resources Canada's 2010 Fuel Consumption Guide. Your actual fuel consumption may vary.

** 2011 Yukon Hybrid fuel consumption ratings based on GM testing in accordance with approved Transport Canada test methods. Your actual fuel consumption may vary.



INTEGRATED DVD NAVIGATION SYSTEM

All Yukon Hybrid models feature the convenience of a standard Integrated DVD Navigation System with voice recognition. The Navigation screen also serves as a display for the rearview camera system and the Hybrid power-flow display, as shown.



WE'VE GOT YOU COVERED.

A concern for safety is one of the best reasons for choosing a new Yukon. Every model includes a long list of standard features designed to help you stay out of collisions, including a tire pressure monitoring system and the StabiliTrak electronic stability control system, which can help reduce your risk of a fatal single-vehicle crash by a stunning 63%.* A rearview camera system, ultrasonic rear parking assist and a side blind zone alert system are also available to help keep your journeys uneventful. Should a crash prove unavoidable, your Yukon is engineered to protect you with safety-cage construction, six air bags and more. And if you require emergency services after a collision, OnStar** can dispatch them automatically to your location.

* According to information published by the US Department of Transportation's National Highway Traffic Safety Administration, July 2007.

** Visit onstar.ca for coverage map, details and system limitations. Services vary by model. OnStar acts as a link to existing emergency service providers.

ONSTAR: INDISPENSABLE FOR SO MANY REASONS



For millions of people across North America, OnStar is making driving safer, more convenient and more enjoyable. It's a revolution in driving, and it's standard on every Yukon, along with 6 months of the Directions & Connections Plan with Turn-by-Turn Navigation. Check out some of the remarkable services OnStar can perform for you.



STOLEN VEHICLE ASSISTANCE

OnStar can help recover your Yukon if it's stolen. OnStar can use GPS technology to locate your Yukon and track its movements. That information is relayed to authorities who can use it to recover your Yukon quickly and safely.



REMOTE VEHICLE DIAGNOSTICS

To help you keep your new Yukon in peak condition, OnStar can automatically run hundreds of diagnostic and maintenance checks every month. You receive a finished report promptly via email.



TURN-BY-TURN NAVIGATION

OnStar's Turn-by-Turn Navigation is the most user-friendly navigation system available. You simply tell an OnStar advisor where you want to go. Clear, audible directions to your destination are then downloaded to your Yukon. Turn-by-Turn Navigation will even help get you back on track automatically if you take a wrong turn.



AUTOMATIC CRASH RESPONSE

Should your Yukon's crash sensors detect a collision, the vehicle immediately notifies the OnStar Centre. An OnStar advisor will attempt to connect with you to see if you need help. Even if you don't respond, the advisor can determine your exact location via GPS and dispatch emergency services.



EMERGENCY SERVICES

A priority connection to get help sent to your exact location.



HANDS-FREE CALLING

In more and more jurisdictions, hands-free calling is the law. OnStar's built-in wireless calling feature makes it easy to make mobile calls the safe way. It also provides a convenient and reliable connection, even in areas where cellular reception is limited.

DUAL-STAGE FRONTAL AIR BAGS

Deploy with reduced force in low-speed frontal collisions to help protect the driver and front passenger.[†]

HEAD CURTAIN SIDE-IMPACT AIR BAGS

Roof-mounted air bags provide protection in side impacts. Large air bags on each side protect the first, second and third-row seat occupants. Driver and right front-passenger seats are fitted with seat-mounted side-impact air bags for additional thorax and pelvic protection.[†]

PASSENGER SENSING SYSTEM

Automatically disables the passenger-side air bag, based on weight and pressure, if the seat is empty or occupied by a child or small adult.[†]

FRONT SAFETY BELT PRE-TENSIONERS

Automatically pull the driver and outboard front passenger safety belts snug when a collision is detected, for improved protection.

FULLY BOXED FRAME

A rigid frame provides a strong platform for Yukon's systems and is engineered for superior crash protection.

HYDROFORMED COMPONENTS

High-tech fabrication process results in strong, lightweight, precision-formed front frame sections.

SAFETY CAGE

Liberal use of high-strength steel reinforcements helps provide excellent occupant protection in impacts and rollovers.

WIDE TRACK DESIGN

Wide front and rear track dimensions enhance Yukon's stability and ride quality.

STABILITRAK

Standard on all models. Helps reduce lateral skids and incorporates hardware and software to mitigate potential rollover situations. Includes full-function traction control.

TIRE PRESSURE MONITORING SYSTEM

Automatically alerts you via the Driver Information Centre when a tire requires inflation.

[†] A NOTE ON CHILD SAFETY: Always use safety belts and proper child restraints, even in vehicles equipped with air bags. Even with the Passenger Sensing System, children are safer when properly secured in a rear seat. Never place a rear-facing infant restraint in the front seat of any vehicle equipped with an active air bag. Refer to the Owner's Manual and child safety seat instructions for more information.



DIFFICULT JUST GOT EASY.

Yukon just doesn't know the meaning of the word "can't". Engine choices start with the standard 320-horsepower Vortec 5.3-litre V8 and range all the way up to the 403-horsepower Vortec 6.2-litre V8 engine found in Denali models, so no matter which model you choose, you get the muscle you need to handle even the heaviest loads. There's also a standard heavy-duty automatic locking rear differential that helps make sure all that power reaches the road. These brawny SUVs are your first choice for towing, too. A heavy-duty Trailering Package is standard equipment, and the six-speed automatic transmission features an integrated Tow/Haul mode for improved performance. For an extra measure of confidence and control, Yukon XL 2500 even includes a standard trailer brake controller.



IMPRESSIVE TOWING CAPABILITY

Massive trailer towing capability is an integral part of every Yukon model. In fact, Yukon XL 2500 carries the highest trailer towing rating of any full-size SUV – an impressive 4355 kg (9600 lb.).*



REARVIEW CAMERA SYSTEM

The available rearview camera system adds to your safety every time you shift into 'Reverse'. It also makes hooking up a trailer easier than you might ever have thought possible.

LOCKING REAR DIFFERENTIAL

To help keep you moving on low-traction surfaces, Yukon's standard Eaton® locking rear differential will lock up automatically to send power to the rear wheel with more grip. Yet another industry-exclusive from GMC.

MODEL	DRIVE	STANDARD GVWR** kg (lb.)	MAX. PAYLOAD† kg (lb.)	MAX. GROSS TRAILER WEIGHT†† kg (lb.)
YUKON	2WD	3221 (7100)	805 (1774)	3856 (8500)
	4x4	3311 (7300)	773 (1705)	3720 (8200)
YUKON DENALI	AWD	3311 (7300)	730 (1610)	3674 (8100)
YUKON HYBRID	2WD	3221 (7100)	670 (1476)	2812 (6200)
	4x4	3311 (7300)	632 (1393)	2676 (5900)
YUKON HYBRID DENALI	4x4	3402 (7500)	623 (1373)	2586 (5700)
YUKON XL 1500	2WD	3266 (7200)	689 (1519)	3674 (8100)
	4x4	3357 (7400)	709 (1563)	3629 (8000)
YUKON XL DENALI 1500	AWD	3357 (7400)	653 (1440)	3538 (7800)
YUKON XL 2500	2WD	3901 (8600)	1102 (2429)	4355 (9600)
	4x4	3901 (8600)	981 (2162)	4264 (9400)

* Based on Ward's 2010 Large SUV segment and latest 2010 Model Year competitive data for comparably equipped vehicles available at time of printing. Excludes other GM models.

** Gross Vehicle Weight Rating (GVWR) includes vehicle, passengers, equipment and cargo.

† Payloads are approximate and will change with the addition of optional or aftermarket equipment. Consult your dealer or equipment supplier for details.

†† Trailer Weight (also called Trailer Towing Capacity) is the weight of a trailer, its load or contents plus any other weight added to the tow vehicle. Many trailer towing applications require additional optional equipment. See your dealer or refer to the vehicle Owner's Manual for details. For more information on trailer towing go to gm.ca.



YUKON XL 2500 SLT, shown in Pure Silver Metallic.

THE RIGHT VEHICLE FOR THE JOB. ANY JOB.

Yukon and Yukon XL are designed to adapt to the way you live today. There's an abundance of room inside and both models offer seating for as many as nine adults.* Every model also comes equipped with a host of amenities – like tri-zone climate control and a quality sound system – to keep everyone comfortable on the journey. Of course, should you need to carry large cargo items, Yukon and Yukon XL can be quickly and easily reconfigured to handle virtually any load. Yukon's maximum cargo capacity is 3084 litres and Yukon XL's is a best-in-class 3891 litres.** Both interiors also pass the ultimate test: carrying 4' x 8' sheets of building material.

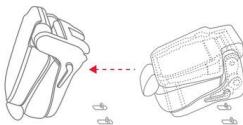
* When properly equipped.

** Based on 2010 Ward's Large SUV segment and latest 2010 Model Year competitive data for comparably equipped vehicles available at time of printing. Excludes other GM models.



POWER LIFTGATE

You'll particularly appreciate Yukon's power liftgate when your hands are full. It opens and closes at the touch of a button. It's standard on Denali models and available on SLT models.



FLEXIBLE SEATING

For optimal versatility, Yukon and Yukon XL's 2nd- and 3rd-row seats fold away and the 3rd-row seat is removable. Power-release fold-and-tumble 2nd-row seats are standard on Denali models and available on SLT models.



YUKON XL SLT INTERIOR, shown in Ebony with 3rd-row removed and 2nd-row partially folded.

GO YOUR OWN WAY.

Regardless of whether you drive on smooth roads, bad roads or no roads at all, there's a Yukon designed to get you to your destination with comfort and confidence. SLE and SLT 4x4 models offer a choice of a standard single-speed Autotrac transfer case or an available two-speed Autotrac transfer case. The two-speed system is standard on Hybrid models and Yukon XL 2500 models. A Premium Smooth Ride suspension is standard, or, if you prefer, SLT models are available with a Z71 off-road suspension package complete with underbody skid plates. Yukon Denali and Yukon XL Denali offer the convenience of full-time all-wheel drive and the sophistication of an AutoRide suspension with variable shock damping and automatic rear level control. The ultimate in SUV suspension technology is found on Hybrid Denali, which features Magnetic Ride Control that adjusts shock absorber damping to match road and driving conditions, as much as 1000 times per second, to help achieve a smooth and controlled ride.



YUKON XL DENALI, shown in Onyx Black.

UNMISTAKABLY YOURS.

Genuine GMC Accessories are the best way to take your new Yukon's exceptional style, performance and versatility to an even higher level. To ensure outstanding fit, finish and performance, all GMC Accessories are engineered to the same high standards as your Yukon. That's why they can be covered under the 3-year/60,000 km New Vehicle Limited Warranty.* When you purchase your new Yukon, your GMC Accessories can also be included in your finance agreement. Ask your dealer for a complete listing of the GMC Accessories to help you make your Yukon unmistakably yours. Or visit gm.ca

* Whichever comes first, when permanently installed by the dealer at the time you purchased your new vehicle, or for the remainder of the New Vehicle Limited Warranty if installed after the time of your vehicle purchase, but no less than 12 months.

AVAILABLE GMC ACCESSORIES FOR YUKON INCLUDE:

- 20" and 22" wheels
- Hitch-mounted ski carrier
- Hitch-mounted bike carrier
- Tail light guards
- Chrome recovery hooks
- Oval assist steps
- Chrome fuel door
- Front fascia extension
- Moulded hood protector
- Trailer hitch cover
- Moulded splash guards
- Side-window weather deflectors
- Hard cargo carrier
- Chrome grille
- DVD player-overhead portable.



YUKON MODEL OVERVIEW

Yukon is offered in a choice of attractive models. To help you find the one that's just right for you, some of the major features that differentiate one Yukon model from another are listed below.

YUKON & YUKON XL SLE

The following features are standard on SLE models:

- 320 hp Vortec 5.3L V8 engine with Active Fuel Management and Variable Valve Timing (VVT) on Yukon and Yukon XL 1500 models
- 352 hp Vortec 6.0L V8 with Variable Valve Timing (VVT) on Yukon XL 2500
- GM Oil Life Monitoring System
- 6-speed automatic transmission with Driver Shift Control, Tow/Haul mode and Grade Braking
- 4-wheel vented disc brakes with 4-wheel ABS and Dynamic Rear Proportioning (DRP)
- StabiliTrak electronic stability control system with Proactive Roll Avoidance
- Traction control
- Autotrac single-speed electronic transfer case (4x4 models) — 2-speed on Yukon XL 2500
- Locking rear differential
- 17" sport aluminum wheels (Yukon and Yukon XL 1500 models)
- 17" bright machined aluminum wheels (Yukon XL 2500 models)
- Tire pressure monitoring system
- Heated, power exterior mirrors
- Black assist steps
- Roof rack side rails
- Liftgate with lift glass
- Heavy-duty Trailing Equipment
- Remote vehicle starter system
- Remote keyless entry system
- Driver Information Centre (DIC)
- Dual-stage frontal air bags for driver and front passenger with Passenger Sensing System and passenger-side air bag suppression system (Yukon and Yukon XL 1500)

- Single-stage frontal air bags for driver and front-passenger (Yukon XL 2500)
- Seat-mounted side-impact air bags for driver and right front passenger
- Front-to-rear head curtain side-impact air bags with rollover sensor
- Seating for up to nine with front 40/20/40 divided folding front-row bench seat, 60/40 divided folding second-row bench and 50/50 divided third-row bench
- Power 6-way driver's seat adjuster
- Tri-zone manual climate controls and rear auxiliary heater
- Power windows and door locks
- Tilt adjustable steering column
- Cruise control
- AM/FM stereo with CD player, MP3 playback, USB port, auxiliary input jack and 6 speakers
- XM Satellite Radio*
- Bluetooth® connectivity
- OnStar** and 6 months of the Directions & Connections Plan with Turn-by-Turn Navigation.

YUKON & YUKON XL SLT

SLT models include the equipment of SLE models plus the following features and upgrades:

- Halogen fog lights
- Black roof rack cross bars
- Ultrasonic rear park assist
- Seating for up to eight
- Leather-appointed front bucket seats
- Power 6-way front-passenger seat adjuster

- Centre floor console with storage and cupholders
- Automatic tri-zone climate controls
- Power adjustable brake and accelerator pedals
- Bose premium 9-speaker sound system with subwoofer
- Rear-seat audio controls and two headphone jacks
- Universal home remote transmitter.

YUKON DENALI & YUKON XL DENALI

Denali models include the equipment of SLT models plus the following features and upgrades:

- 403 hp Vortec 6.2L V8 engine with VVT
- Full-time all-wheel drive
- AutoRide suspension with automatic rear level control
- 20" aluminum wheels
- Trailing Heavy-Duty Cooling Package
- Denali-specific grille
- Power sunroof
- Power liftgate
- Colour-keyed assist steps with chrome inserts
- Heated, power exterior mirrors, body-colour with driver side auto-dimming, turn signal in glass and ground illumination, power folding
- Chrome roof rack side rails with body-coloured end caps
- Heated, leather-wrapped steering wheel with wood trim
- Auto-dimming interior rear-view mirror

- Seating for up to seven
- Heated and cooled power 12-way front bucket seats with perforated-leather appointments
- Driver's 2-position seat memory function
- Heated, leather-appointed reclining second-row bucket seats and vinyl 50/50 divided third-row bench seat
- Power release fold-and-tumble 2nd-row seating
- Bose 10-speaker luxury sound system
- Rear Entertainment System with DVD player, overhead display, 2 sets of wireless headphones, auxiliary audio/video input jacks and rear-seat audio controls.

YUKON HYBRID SLT

Yukon Hybrid SLT includes many of the Yukon SLT features, plus:

- 322 hp Vortec 6.0L V8 LIVC (Late Intake Valve Closing) engine with VVT and Active Fuel Management
- GM Hybrid Propulsion Electric System
- 300-volt nickel-metal hydride Energy Storage System (ESS) located under the second-row seat cushion
- 4-speed electronically variable automatic transmission
- Regenerative braking system
- Autotrac 2-speed electronic transfer case (4x4 models)
- Unique hybrid aero design grille and fascias
- 18" low-mass aluminum wheels

- Low mass aluminum liftgate
- Tire inflator kit in place of spare tire and wheel assembly
- Rearview camera system
- Seating for eight
- Heated, leather-appointed front bucket seats
- Auto-dimming interior rear-view mirror
- 115-volt household-style power outlet
- DVD-based Navigation System with voice recognition, AM/FM stereo with CD player, MP3 compatibility, USB port, auxiliary input jack and 6 speakers. Includes Hybrid power-flow display and rearview camera system display on navigation screen.

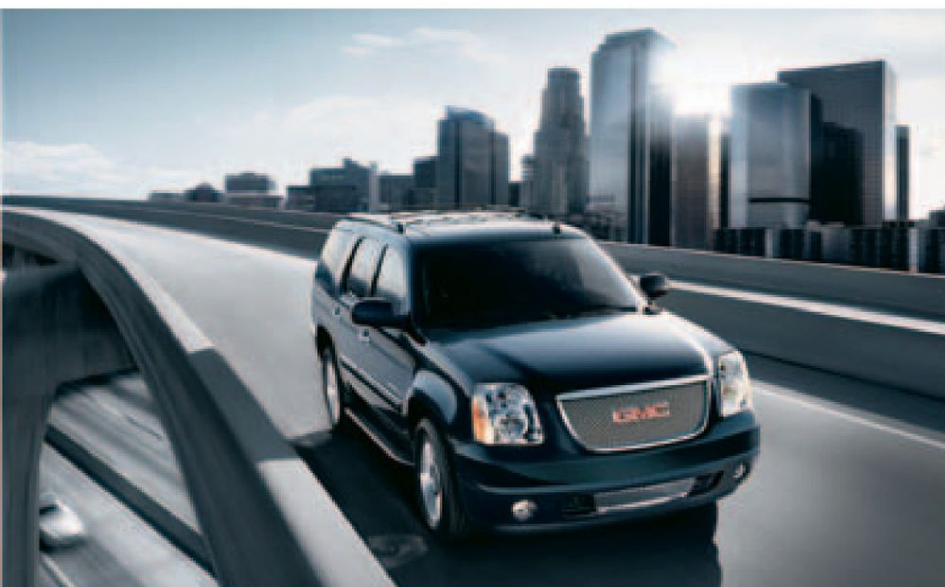
* Available in 10 Canadian provinces and the 48 contiguous United States. Subscription sold separately after trial period. Visit xmradio.ca for details.

** Visit onstar.ca for coverage map, details and system limitations. Services vary by model and conditions.

YUKON HYBRID DENALI

Yukon Hybrid Denali includes the equipment of Yukon Hybrid SLT plus the following features and upgrades:

- Denali-specific grille
- Halogen fog lights
- 22" aluminum wheels
- Power liftgate
- Power sunroof
- Colour-keyed assist steps with chrome inserts
- Chrome roof rack side rails with body-coloured end caps and centre cross bars
- Leather-wrapped steering wheel with wood trim
- Seating for eight
- Heated and cooled power 12-way front bucket seats with perforated-leather appointments and driver's 2-position memory function
- Leather-appointed 60/40 divided second-row bench seat and vinyl 50/50 divided third-row bench seat
- Bose 10-speaker luxury sound system.



PEACE OF MIND, STANDARD WITH EVERY GMC MODEL

When you build them with quality, you can back them with confidence. That's why General Motors of Canada backs every GMC model with the best coverage in Canada. Program highlights include:

- 3-year/60,000 km New Vehicle Limited Warranty*
- 5-year/160,000 km Powertrain Component Limited Warranty, with \$0 deductible on repairs and the warranty is fully transferable at no charge*
- 5-year/160,000 km Courtesy Transportation*
- 5-year/160,000 km 24/7 Roadside Assistance*
- 6-year/160,000 km rust-through perforation coverage*
- 8-year/130,000 km coverage on catalytic converters and powertrain control modules (PCMs).*
- 8-year/160,000 km coverage on specific hybrid components on Yukon Hybrid model.*

* Whichever comes first. Conditions and limitations apply, see dealer for details.

OTHER OWNERSHIP PRIVILEGES AND PROGRAMS:**

- **GM Protection Plan (GMPP)** – the only extended service plan backed by the resources and commitment of General Motors. GMPP may be purchased at the time of sale or subsequently during the New Vehicle Limited Warranty period
- **GM Goodwrench Service** – with GM-certified technicians and GM-approved parts, nobody knows your GM vehicle better.

** Conditions and limitations apply.

TO HELP YOU PURCHASE A NEW VEHICLE:

- **Purchase Financing** – on the spot financing at your GM dealership†
- **GM Student Bonus Program** – students or recent graduates of high school, college or university** may be entitled to receive a Student Bonus vehicle redemption allowance of \$500 or \$750† (tax inclusive) (purchased vehicle dependant) to use towards the purchase, lease or finance of one eligible new GMC vehicle.
- **The GM Card** – GM cardholders may redeem up to \$3500 GM Card® Earnings (subject to Vehicle Redemption Allowances) toward the Total Purchase Price on eligible new GM vehicles†. For full program details please visit thegmcard.ca

† Subject to eligibility. †† Program subject to change. ** Conditions and limitations apply.

INFORMATION RESOURCES:

You can find more information about these programs from your GM dealer, or at these information centres:

- The GM website at gm.ca
- The GM Customer Communication Marketing Centre at 1-800-GM-DRIVE (1-800-463-7483 or 1-800-263-3830 for TDD users).

A WORD ABOUT THIS BROCHURE

Some of the equipment shown or described throughout this brochure may be available at extra cost. We have tried to make this brochure comprehensive and factual. We reserve the right, however, to make changes at any time, without notice, in prices, colours, materials, equipment, specifications, models and availability. Specifications, dimensions, measurements, ratings and other numbers in this brochure and other printed materials provided at the dealership or affixed to vehicles are approximates based upon design and engineering drawings and prototypes and laboratory tests. Your vehicle may differ due to variations in manufacture and equipment. Since some information may have been adapted since the time of the printing, please check with your GM dealer for complete details. General Motors of Canada Limited reserves the right to lengthen or shorten the model year for any product, for any reason, or to start and end model years at different times.

A WORD ABOUT ASSEMBLY

GM vehicles are equipped with engines and components produced and assembled by different operating units of General Motors, its subsidiaries and suppliers and these engines and components may change or be obtained from different sources from time to time. All such engines and components are approved for use in GM vehicles. Certain equipment ordered may be unavailable at the time of assembly and we suggest that you verify that your vehicle includes the equipment you ordered, or if there are changes, that they are acceptable to you.

TRADEMARKS

The marks appearing in this brochure including, but not limited to: General Motors, GM, GMC, Denali, Yukon, Yukon XL, Z71 and their respective logos, emblems, slogans and vehicle model names and body designs; and other marks such as Active Fuel Management, Autotrac, AutoRide, Magnetic Ride Control, StabiliTrak and Vortec are trademarks of General Motors and/or General Motors of Canada Limited, its subsidiaries, affiliates or licensors.

OnStar and the OnStar emblem are registered trademarks of the OnStar Corporation.

TheftLock is a registered trademark of Delphi Automotive Systems.

Radio Data System (RDS) is a registered trademark of the U.S. National Association of Broadcasters.

The XM name and related logos are trademarks of XM Canada, Canadian Satellite Radio Inc.

Eaton is a registered trademark of Eaton Corporation.

Bose is a registered trademark of the Bose Corporation.

Bluetooth is a registered trademark of Bluetooth SIG Inc.

COPYRIGHT

©Copyright 2010 General Motors of Canada Limited. All Rights Reserved. All text, images, graphics, and other materials in this brochure are subject to the copyright and other intellectual property rights of General Motors and/or General Motors of Canada Limited. These materials may not be reproduced, distributed or modified without the express written permission of General Motors and/or General Motors of Canada Limited.

Printed in Canada, September 2010.

2011 GMC YUKON & YUKON XL STANDARD & OPTIONAL FEATURES

SAFETY AND SECURITY	HYBRID				
	SLE	SLT	DENALI	SLT	DENALI
Air bags – dual-stage, driver and right front-passenger, frontal with Passenger Sensing System and passenger-side air bag suppression system with status indicator in overhead console – except Yukon XL 2500	S	S	S	S	S
Air bags – single-stage, driver and front-passenger, frontal – Yukon XL 2500	S	S	–	–	–
Air bags – driver and right front passenger, seat-mounted side-impact	S	S	S	S	S
Air bags – front-to-rear, head curtain side-impact with rollover sensor	S	S	S	S	S
Door locks – power, programmable with lock-out protection	S	S	S	S	S
Headlights – Daytime Running Lights with automatic light control	S	S	S	S	S
Keyless entry system – remote, includes 2 extended range transmitters	S	S	S	S	S
OnStar® In-Vehicle Communications and Assistance Service – includes 6 months of the Directions & Connections Plan with Turn-by-Turn Navigation	S	S	S	S	S
Safety restraints – LATCH (Lower Anchors and top Tethers for Children)	S	S	S	S	S
Safety restraints – 3-point belts for all seating positions (when equipped with front bucket seats; lap belt for centre position with front split-bench seat)	S	S	S	S	S
StabiliTrak – electronic stability control system with Proactive Roll Avoidance	S	S	S	S	S
Theft-deterrent system – content theft alarm	S	S	S	S	S
Theft-deterrent system – electronic immobilizer	S	S	S	S	S
Traction control – electronic, full-function, all-speed	S	S	S	S	S
Ultrasonic rear parking assist – rear obstacle detection system with audible warning	0 ¹	S	S	S	S
MECHANICAL					
Air cleaner – high capacity	S	S	S	–	–
Brakes – power-assisted, 4-wheel vented disc with 4-wheel anti-lock braking system (ABS) and dynamic rear proportioning (DRP)	S	S	S	S	S
Brakes – regenerative braking system, recharges 300-volt Hybrid battery pack	–	–	–	S	S
Engine – Vortec 5.3L V8 with Active Fuel Management and Variable Valve Timing, capable of running on up to 85% ethanol (E85) – Horsepower – 320 @ 5400 rpm; – Torque – 335 lb.-ft. @ 4000 rpm – except Yukon XL 2500	S	S	–	–	–
Engine – Vortec 6.2L V8 with Variable Valve Timing (VVT), capable of running on up to 85% ethanol (E85) – Horsepower – 403 @ 5700 rpm; – Torque – 417 lb.-ft. @ 4300 rpm	–	–	S	–	–
Engine – Vortec 6.0L V8 with Variable Valve Timing (VVT), capable of running on up to 85% ethanol (E85) – Horsepower – 352 @ 5400 rpm; – Torque – 382 lb.-ft. @ 4200 rpm – Yukon XL 2500	S	S	–	–	–
Engine – Vortec 6.0L IVC V8 with Variable Valve Timing (VVT) and Active Fuel Management, Hybrid electric propulsion system with 300-volt Hybrid battery pack and high voltage management module – Horsepower – 332 @ 5100 rpm; – Torque – 367 lb.-ft. @ 4100 rpm	–	–	–	S	S
Engine – block heater	0	0	0	0	0
Locking differential – rear	S	S	S	S	S
Steering – power, rack-and-pinion – Yukon and Yukon XL 1500	S	S	S	–	–
Steering – electric power, rack-and-pinion	–	–	–	S	S
Steering – power, recirculating ball – Yukon XL 2500	S	S	–	–	–
Suspension – Premium smooth ride – Yukon and Yukon XL 1500	S	S	–	S	–
Suspension – AutoRide, road-sensing, electronically controlled shock absorbers with air-assisted automatic rear level control	–	0 ²	S	–	–
Suspension – Magnetic Ride Control	–	–	–	–	S
Suspension – heavy-duty handling and trailering with front independent torsion bars and rear multi-stage leaf springs – Yukon XL 2500	S	S	–	–	–
Trailering Equipment – heavy-duty, includes weight-distributing hitch platform with 51 mm (2 in.) hitch receiver, 7-pin sealed wiring connector and provision for an aftermarket trailer brake controller	S	S	S	S	S
Trailering Heavy-Duty Cooling Package – includes external transmission and engine oil coolers (standard on Yukon XL 2500 models) ³ , 2-Speed Automatic transfer case and trailer electric brake controller	0	0	S	–	–

MECHANICAL (CONTINUED)	HYBRID				
	SLE	SLT	DENALI	SLT	DENALI
Trailer electric brake controller ³ – standard on Yukon XL 2500	0	0	0	–	–
Transfer case – single-speed, Autotrac with electronic rotary control – Yukon 4x4 and YukonXL 1500 4x4 models ⁴	S	S	–	–	–
Transfer case – 2-speed, Autotrac with electronic rotary control – Yukon Hybrid, Yukon Hybrid Denali and Yukon XL 2500 4x4 models	S	S	–	S	S
Transfer case – AWD, full-time electronic automatic system	–	–	S	–	–
Transmission – 6-speed electronically controlled automatic with two overdrive gears, Tow/Haul mode and Driver Shift Control (model 6L80 used on 1500 models; heavy-duty model 6L90 used on Yukon XL 2500)	S	S	S	–	–
Transmission – 4-speed automatic integrated with Hybrid variable electric propulsion system	–	–	–	S	S
Transmission/Hybrid electronics cooler	–	–	–	S	S
Snowplow Prep Package – Yukon XL 2500 4x4 models only	0	0	–	–	–
Vehicle starter system – remote	S	S	S	S	S
Z71 Off-Road Equipment – includes P265/70R17 On-Off Road tires and skid plates protecting the oil pan, front differential case and transfer case (not available on Yukon XL 2500) ⁵	–	0	–	–	–
EXTERIOR					
Assist steps – black	S	S	–	S	–
Assist steps – colour-keyed with chrome insert	–	–	S	–	S
Assist steps – power retractable	–	–	0	–	–
Bumpers – front and rear, colour-keyed fascia	S	S	S	–	S
Bumpers – front and rear, colour-keyed fascia with unique Hybrid aero design	–	–	–	S	–
Door handles – colour-keyed	S	S	–	S	–
Door handles – chrome	–	–	S	–	S
Fog lights – halogen	–	S	S	–	S
Glass – Solar-Ray tinted, deep-tinted on all windows behind front doors	S	S	S	S	S
Grille – chrome surround	S	S	S	S	S
Grille – chrome mesh insert	–	–	S	–	S
Liftgate – includes liftglass	S	S	S	–	S
Liftgate – power, electric open and close with keyless remote control	–	0	S	–	S
Liftgate – low mass aluminum with fixed window glass	–	–	–	S	–
Mirrors – manual foldaway power adjustable, heated and colour-keyed	S	S	–	–	–
Mirrors – power foldaway, full-feature power adjustable, heated, driver-side auto-dimming feature, side-entry illumination and integrated turn signals (chrome on Denali, colour-keyed on SLT and Hybrid)	–	0	S	S	S
Mirrors – deluxe wide load, manual extending and folding, heated, integrated turn signals and lower convex spotter (Yukon XL 2500)	0	0	–	–	–
Mouldings – bodyside, colour-keyed	S	S	–	S	–
Mouldings – bodyside, colour-keyed with chrome insert	–	–	S	–	S
Rearview camera system – reverse assist for parking or trailer towing (includes interior rear-view mirror with display or displayed on navigation system screen with up-level sound system and DVD-based navigation)	–	0	0	S	S
Recovery hooks – two, front – 4x4 models ⁶	S	S	S	–	S
Roof rack – side rails	S	S	S	–	S
Roof rack – cross bars	0	S	S	–	S
Side blind zone alert	–	–	0	–	0
Skid plates – includes aluminum front underbody shield from front fascia to first cross member, plus oil pan, front differential and transfer case shields (included with Z71 Off-Road Equipment) – 4x4 models	0	0	–	–	–
Sunroof – power, sliding glass panel and tilt with express-open and close	–	0	S	0	S
Tire inflator kit	–	–	–	S	S
Tires – P265/70R17 all-season** – Yukon and Yukon XL 1500	S	S	–	–	–
Tires – P265/65R18 all-season**	–	–	–	S	–
Tires – P285/45R22 all-season**	–	–	–	–	S
Tires – P275/55R20 all-season** – Yukon and Yukon XL 1500	–	0	S	–	–
Tires – P265/70R17 On-Off road – Yukon and Yukon XL 1500	0	0	–	–	–
Tires – LT265/70R17 All-Terrain – Yukon XL 2500	S	S	–	–	–

EXTERIOR (CONTINUED)	HYBRID				
	SLE	SLT	DENALI	SLT	DENALI
Wheels – 17" x 7.5" bright aluminum, Sport (N88) – Yukon and Yukon XL 1500	S	S	–	–	–
Wheels – 18" x 8.0" low mass aluminum (P71)	–	–	–	S	–
Wheels – 22" x 9.0" chromed aluminum (RVA)	–	–	–	–	S
Wheels – 17" x 7.5" bright machined aluminum with 8-lug design, centre caps and 17" full-size spare – Yukon XL 2500 (P25)	S	S	–	–	–
Wheels – full-size 17" spare under rear frame, lockable	S	S	S	–	–
Wheel and Tire Package – includes 20" x 8.5" polished aluminum wheels and P275/55R20 all-season** tires – Yukon and Yukon XL 1500 (RDP) / Yukon Denali and Yukon XL Denali (P41)	–	0	S	–	–
Wheel and Tire Package – includes 20" x 8.5" chrome-clad aluminum wheels and P275/55R20 all-season** tires – Yukon and Yukon XL 1500 (S86)	–	0	–	–	–
Windshield wipers – variable delay (intermittent), flat-blade, with wet-arm washers	S	S	S	S	S
Wiper/washer – rear-window with fixed delay	S	S	S	S	S
Driver Convenience Package (PDE) – includes ultrasonic rear parking assist and power adjustable pedals	0	S	S	S	S
White Diamond Package – polished exhaust tip and chrome recovery hooks – Yukon and Yukon XL 1500	–	0 ⁷	–	–	–

INTERIOR

Air conditioning – tri-zone, manual climate controls with individual settings for driver, front and rear passengers ⁸	S	–	–	–	–
Air conditioning – tri-zone, automatic climate controls with individual settings for driver, front and rear passengers ⁸	–	S	S	S	S
Cargo compartment mat – rear (Yukon XL)	–	–	S	–	–
Console – centre floor, includes storage bin, dual cupholders in front and rear, 2 power outlets, rear-seat audio and HVAC controls	–	S	S	S	S
Cruise control – electronic with resume, coast and decelerate/accelerate features	S	S	S	S	S
Defogger – electric, rear-window	S	S	S	S	S
Floor covering – colour-keyed carpet with 1st- and 2nd-row removable floor mats	S	S	S	S	S
Heater – rear, auxiliary with passenger heating ducts	S	S	S	S	S
Instrumentation – full analogue gauge cluster (includes speedometer, tachometer, odometer, trip odometer, fuel level, voltmeter (replaced with ECO gauge in Hybrid), coolant temperature and oil pressure)	S	S	S	S	S
Instrumentation – Driver Information Centre, comprehensive multi-language system that displays numerous vehicle functions with both visual and audible reminders/warnings. Enables programmable personalization of features such as automatic locking/unlocking and exit lighting, includes 8-point compass and exterior temperature display	S	S	S	S	S
Instrumentation – tire pressure monitoring system (except spare)	S	S	S	S	S
Instrumentation – GM Oil Life Monitoring System	S	S	S	S	S
Lights – overhead, reading and cargo with illuminated entry feature	S	S	S	S	S
Mirror – rear-view, auto-dimming	–	0	S	S	S
Pedals – power adjustable brake and accelerator	0 ⁹	S	S	S	S
Power outlets – auxiliary 12-volt (2 on instrument panel, 1 in cargo area and 2 in centre console when equipped with bucket seats)	S	S	S	S	S
Power outlet – auxiliary 115-volt 3-prong household type, located in rear	–	–	–	S	S
Steering column – tilt adjustable	S	S	S	S	S
Steering wheel – leather-wrapped with sound system and cruise controls	S	S	S	S	S
Steering wheel – heated with wood trim	–	–	S	–	–
Steering wheel – includes wood trim	–	–	–	–	S
Sunshades – LH and RH, padded, colour-keyed, extendable with illuminated visor mirrors	S	S	S	S	S
Universal home remote – 3-channel transmitter	–	S	S	S	S
Windows – power, includes driver express-down and passenger lock-out features	S	S	S	S	S

SEATS	HYBRID				
	SLE	SLT	DENALI	SLT	DENALI
Premium cloth 40/20/40 split-bench reclining front seat with power 6-way driver seat adjuster and manual lumbar adjuster, centre fold-down armrest with lockable storage compartment in centre seat cushion	S	–	–	–	–
Leather-appointed reclining front bucket seats with power 6-way driver and front-passenger seat adjusters with manual lumbar adjusters and centre floor console	–	S	–	S ¹⁰	–
Premium cloth reclining front bucket seats with power 6-way driver and front-passenger seat adjusters with manual lumbar adjusters and centre floor console	–	0	–	–	–
Leather-appointed full-feature power reclining front bucket seats with driver and front-passenger power 10-way seat adjusters (including power 2-way lumbar adjusters), heated, driver's 2-position memory controls and centre floor console	–	0	–	–	–
Perforated leather-appointed full-feature power reclining front bucket seats with driver and front-passenger power 12-way seat adjusters (including power 4-way lumbar adjusters), heated and cooled seats, driver's 2-position memory controls and centre floor console	–	–	S	–	S
2nd-row 3-passenger 60/40 split-folding bench with centre armrest	S	S	0	S	S
2nd-row reclining bucket seats	–	0 ¹¹	S	–	–
2nd-row heated (outboard seating positions)	–	0 ¹¹	S	–	S
2nd-row power release fold-and-tumble	–	0	S	–	–
3rd-row 3-passenger 50/50 split-bench, removable ¹²	S	S	S	S	S

ENTERTAINMENT SYSTEMS

AM/FM stereo – with CD player, MP3 playback compatible, USB port, auxiliary audio input jack, seek-scan, auto tone control, speed-compensated volume, TheftLock®, Radio Data System® (RDS) and digital clock	S	S	–	–	–
AM/FM stereo – with CD/DVD player upper slot and CD player lower slot, MP3 playback compatible (both), USB port, auxiliary audio input jack, seek-scan, auto tone control, speed-compensated volume, TheftLock, Radio Data System (RDS) and digital clock	–	0	S	–	–
XM Satellite Radio [†]	S	S	S	S	S
Bluetooth – utilizes vehicle sound system, microphone, voice recognition and controls with Bluetooth-enabled cell phones	S	S	S	S	S

S – Standard. 0 – Optional individually or in combination with other optional equipment.

Note: The trim features indicated reflect only a portion of the total content of each trim level. See your sales consultant for complete listings, current availability and compatibility.

1 – Available with Driver Convenience Package.

2 – Not available on Yukon XL 2500 models.

3 – Included with Trailing Heavy-Duty Cooling Package.

4 – 2-speed Autotrac transfer case is available.

5 – Includes 2-speed Autotrac transfer case on Yukon 4x4 and Yukon XL 1500 4x4 models.

6 – Standard on all 2500 models.

7 – Requires White Diamond Tricoat (98), available at extra cost.

8 – Rear-seat climate controls are included, located in the overhead console on SLE models and rear of the centre floor console on SLT and Denali models.

9 – Requires available Drivers Convenience Package.

10 – Heated front bucket seats on Hybrid.

11 – Requires leather-appointed full-feature front bucket seats.

12 – Third row is vinyl when leather-appointed seating is specified.

* Visit onstar.ca for coverage map, details and system limitations. Services vary by model and conditions.

** All-season tires may not satisfy winter tire requirements in all regions of the country. Tires specifically designed for severe winter conditions and marked with the "winter tire" symbol  may be required during certain months or in certain regions. Contact your Provincial, Municipal or local road authority for information regarding which tires are required in your particular area.

† Available in all 10 Canadian provinces and the 48 contiguous United States. Subscription sold separately after trial period. Visit xmradio.ca for more details.

STANDARD & OPTIONAL FEATURES (CONTINUED)

	SLE	SLT	DENALI	HYBRID SLT	HYBRID DENALI
ENTERTAINMENT SYSTEMS (CONTINUED)					
6-speaker sound system	S	—	—	—	—
Bose 9-speaker premium sound system with subwoofer	—	S	—	S	—
Bose 10-speaker Centre Channel sound system with subwoofer	—	—	S	—	S
2nd-row audio controls and earphone jacks	—	S	S	S	S
DVD entertainment system – 2nd-row, overhead fold-down 203 mm (8-in.) LCD colour monitor, DVD player, video camera/game input (RCA) jacks, 2 wireless two-channel headphones and remote control	—	0 ¹³	S ¹³	0	0
3rd-row DVD entertainment system – available on Yukon XL models only, requires DVD entertainment system	—	0	0	—	—
Integrated DVD navigation system – multimedia with navigation and voice recognition, includes Rearview Camera System, AM/FM stereo with CD player, MP3 playback compatible, auxiliary audio input jack, seek, scan, digital clock, auto tone control, speed-compensated volume, TheftLock and Radio Data System (RDS) ¹⁴	—	0 ¹³	0 ¹³	S ¹⁵	S ¹⁵

YUKON AND YUKON XL PREFERRED EQUIPMENT GROUPS

Yukon and Yukon XL offer the following popular upgrades to the SLT for even more convenience and comfort.

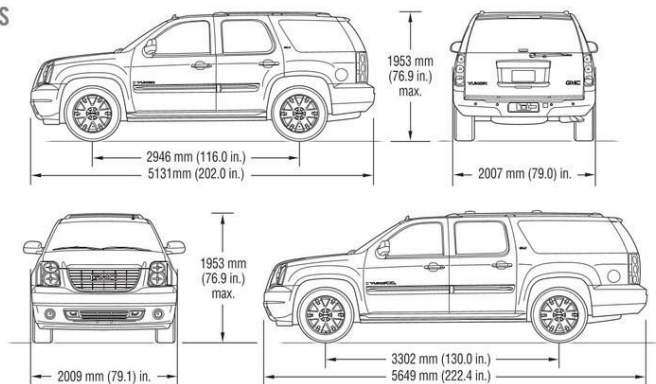
Yukon and Yukon XL PEG 1SD adds the following options to the SLT: full-feature leather-appointed, heated front bucket seats with power 10-way seat adjusters (including power 2-way lumbar adjusters) – 2nd-row heated outboard seating positions with power fold, release and tumble – auto-dimming interior rear-view mirror – exterior rear-view mirrors include power foldaway, power adjustable, heated, driver-side auto-dimming feature, side-entry illumination and integrated turn signals

13 – DVD entertainment system and Integrated DVD navigation system are available as a package.

14 – At time of print, detailed map coverage is available for most major urban areas of the United States and for certain metropolitan areas of Canada (Vancouver, Calgary, Edmonton, Winnipeg, Windsor, London, Toronto, Ottawa, Montreal, Quebec City and Halifax). Coverage is significantly limited outside these areas.

15 – Hybrid includes power flow display on DVD navigation screen.

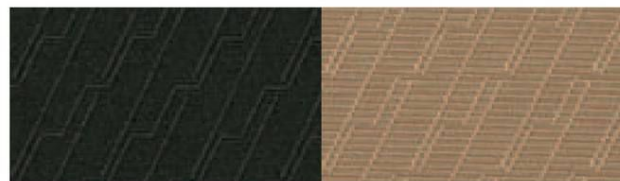
DIMENSIONS



CARGO AREA DIMENSIONS, mm (in.)	YUKON	YUKON XL
Cargo floor height to ground	805 (31.7)	828 (32.6)
Maximum cargo height	1059 (41.7)	1052 (41.4)
Cargo floor width between wheel housings	1247 (49.1)	1247 (49.1)
Load-floor length to front seat	2068 (81.4)	2586 (101.8)
Load-floor length to 2nd-row seat	1255 (49.4)	1768 (69.6)
Load-floor length to 3rd-row seat	386 (15.2)	904 (35.6)
VOLUME, L (cu. ft.)	YUKON	YUKON XL
With all seats in position	479 (16.9)	1297 (45.8)
With 3rd-row seat removed or folded	1708 (60.3)	2549 (90)
With 2nd-row seat folded and 3rd-row seat removed	3084 (108.9)	3891 (137.4)

INTERIOR FABRIC COLOURS

YUKON/YUKON XL – PREMIUM CLOTH – standard on SLE models



19 – Ebony

33 – Light Tan

YUKON/YUKON XL – LEATHER-APPOINTED SEATING – standard on SLT models

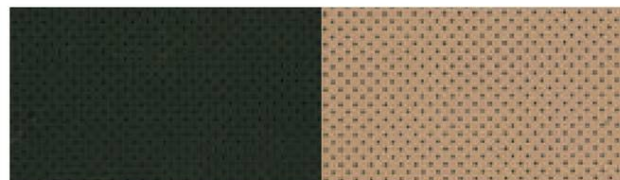


19 – Ebony

33 – Light Tan

83 – Light Titanium

YUKON/YUKON XL DENALI – PERFORATED LEATHER-APPOINTED SEATING



19 – Ebony

39 – Cocoa/Light Cashmere

EXTERIOR/INTERIOR COLOUR COMPATIBILITY

EXTERIOR ▼	INTERIOR MODEL ►	19 – Ebony SLE/SLT Denali	33 – Light Tan SLE/SLT	83 – Light Titanium SLE/SLT	39 – Light Cashmere Denali
41 – Onyx Black ¹		•	•	•	•
50 – Summit White		•	•	•	•
51 – Gold Mist Metallic ¹		•	•	•	•
58 – Carbon Black Metallic*		•	•	•	•
80 – Red Jewel Tintcoat*		•	•	•	•
98 – White Diamond Tricoat* ^{1,2}		•	•	•	•
GGU – Gray Green Metallic ¹		•	•	•	•
GGW – Storm Gray Metallic		•	•	•	•
GGZ – Pure Silver Metallic		•	•	•	•
GHA – Mocha Steel Metallic		•	•	•	•

* Premium colour, available at extra cost.

¹ Not available on Yukon Hybrid SLT.

² Requires available White Diamond Package and SLT with PEG 1SD. Not available with SLE or Yukon XL 2500.

EXTERIOR COLOURS



41 – Onyx Black¹



50 – Summit White



51 – Gold Mist Metallic¹



58 – Carbon Black Metallic*



80 – Red Jewel Tintcoat*



98 – White Diamond Tricoat*,^{1,2}



GGU – Gray Green Metallic¹



GGW – Storm Gray Metallic



GGZ – Pure Silver Metallic



GHA – Mocha Steel Metallic

* Premium colour, available at extra cost.

¹ Not available on Yukon Hybrid SLT.

² Requires available White Diamond Package and SLT with PEG 1SD. Not available with SLE.

YUKON WHEELS

YUKON



17" x 7.5" sport aluminum,
standard on 1500 SLE and
SLT models (N88)



20" x 8.5" chrome-clad
aluminum, available on
1500 SLT models (S86)



18" x 8.0" low mass
aluminum, standard on
Hybrid SLT models (P71)



17" x 7.5" bright machined
aluminum, standard on all 2500
models (P25)



20" x 8.5" polished aluminum,
available on 1500 SLT
models (RDP)

YUKON DENALI



20" x 8.5" chromed aluminum,
standard on Denali models (P41)



22" x 9.0" chromed aluminum,
standard on Hybrid Denali
models (RVA)



Mixed Sources
Product group from well-managed
forests, controlled sources and
recycled wood or fiber
www.fsc.org Cert no. SW-COC-002429
© 1996 Forest Stewardship Council

191-11-B-007E

GMC
Y U K O N