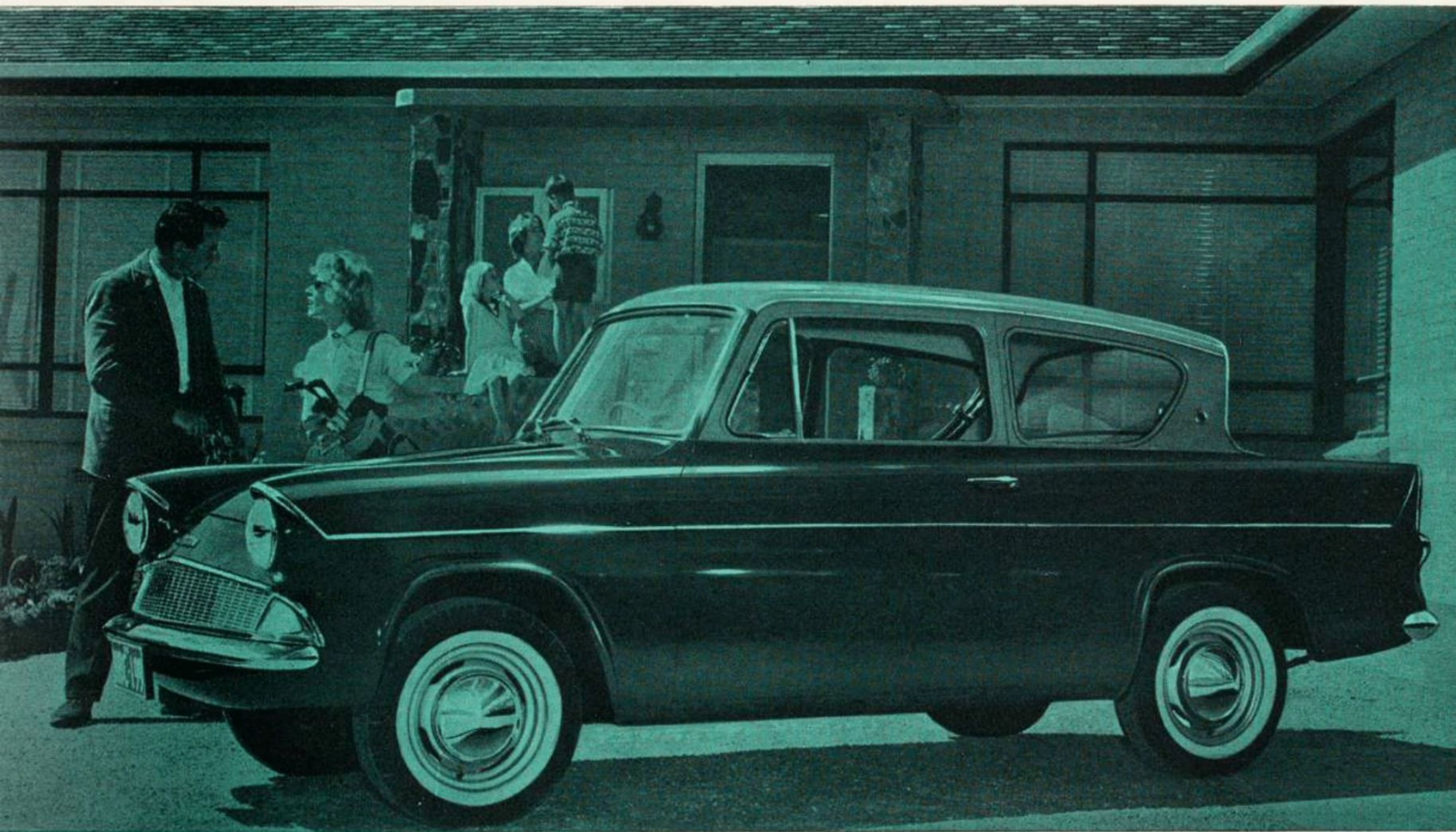


The world's most winning light car—

THE LION-HEARTED  
**Anglia**  
BY FORD







**Four reasons why Anglia is smoother and safer:** (1) Glide-ride front suspension system with double-acting shock absorbers and anti-roll bars. (2) Extra-stable, balanced rear suspension. (3) All passengers are cradled completely within the wheelbase, the area where the going is smoothest. (4) 55% to the front and 45% to the rear distribution of weight and low centre of gravity mean more stability.



## This is the car with success after success!

In Australia, as in practically every country in the world, the Anglia is having success after success in trials, races and rallies. But a lion-hearted capacity to perform and endure in exceptional manner is but one of Anglia's advantages.

This is a car which you will enjoy because of its style, comfort and money-saving as well as its extra abilities in power and handling ease.

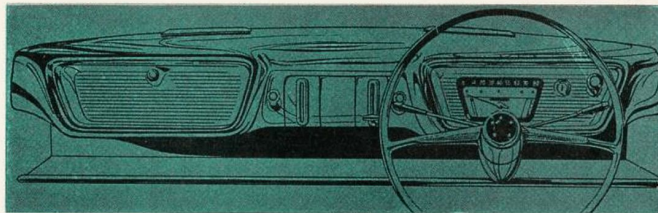
Not least in this owner satisfaction is a 40 miles per gallon economy—proved, once again, in the 1962 Mobilgas Economy Run in which Anglia returned 44.6 m.p.g. In first cost, too, Anglia provides big savings. For instance, it is now £72 less in price than its main competitor.

In whatever way you assess its value, the lion-hearted Anglia is indeed *the world's most winning light car—a better car for you to own!*

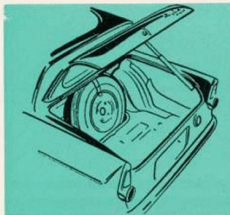


**More rear-seat space than ever before!** . . . really generous space for the longest legs—and for the tallest heads, too, for the raked-back rear window makes possible the provision of inches of extra headroom. The wide rear seat is foam-rubber cushioned and attractively upholstered in a choice of gay and hardwearing two-tone materials.

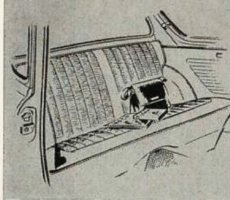
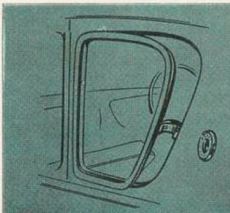
**Handsome, practical facia** . . . behind the deep "dished" safety-design wheel, instruments are in a neat group plus ignition key starter and choke control. And underneath, a deep, wide package tray extending full instrument panel width.



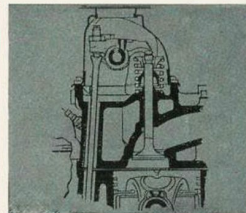
**No luggage problems.** A large, wide, deep boot with a capacity of 10 cubic feet, and every inch usable! Here there is room aplenty for two large suitcases and a golf bag—and a whole lot more besides. Because of the rear window rake-back, the wide boot lid opens higher for greater, faster accessibility. Centre mounting of spare wheel adds to full-width usefulness of the luggage space.



**Rear-seat ventilation** — without a breath of wind-draught — is cleverly provided by the new rear ventilator-window. The volume of ventilation required is easily controlled by the new-style fasteners, which are also designed to be entirely thief-proof.



**Very large overhead valves** separate inlet ports . . . ideally-shaped symmetrical combustion chamber. All four cylinders 'breathe' evenly, and engine has extremely high thermal efficiency. Result: extra, smooth, power output.

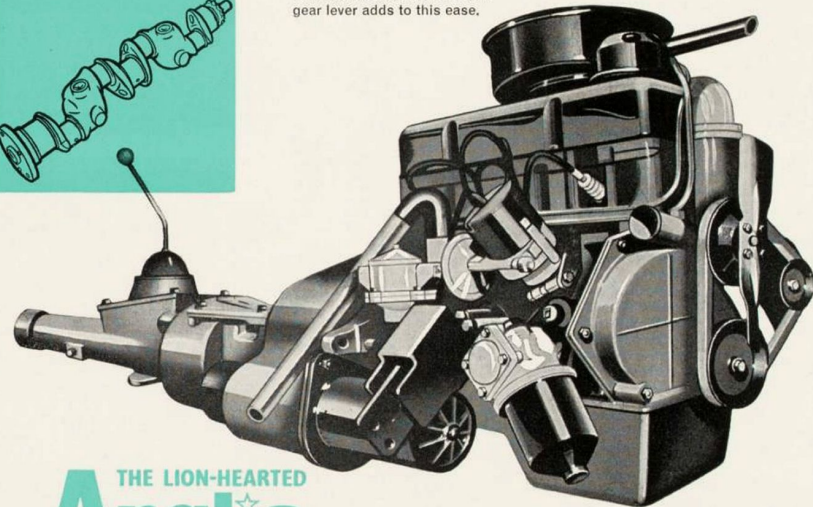


**Hollow-cast crankshaft** combines greater strength and rigidity with less weight. All of Anglia's engine features add efficiency. Even the combustion chambers are machined—a refinement normally found only in expensive cars.



**997 c.c. O.H.V. 'Over-square' engine** . . . provides the power beneath the hood, develops 39 b.h.p. at 5,000 r.p.m. Extra-special feature of the all-new engine is its 'over-square' characteristics. Quite simply, this means that the engine produces 'more-power-from-less-effort' than engines of the past. You'll feel the benefit in increased fuel economy, quieter running at all speeds, much longer engine life—and, above all, in performance.

**4-speed gear box with easiest changing ever.** There is new ease in driving with Anglia's 4-speed synchro-silent gear-box and hydraulically operated clutch. Ideal placement of the short, sports-type gear lever adds to this ease.



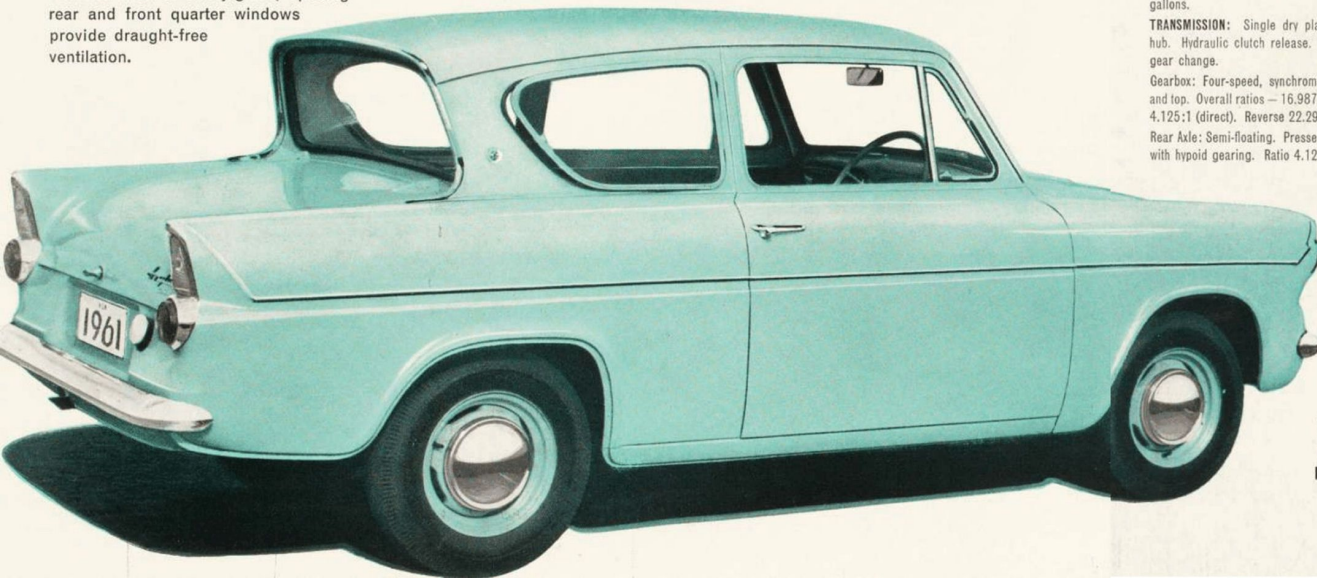
**0.6:1 "Oversquare" stroke: Bore ratio.** The short piston travel in relation to cylinder width reduces engine wear, maintains maximum fuel economy, quiet running and long life. Most important advantage—it creates sparkling performance!

THE LION-HEARTED  
**Anglia**  
BY FORD

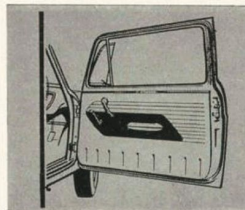
The World's most winning light car



**Every aspect of Anglia is smart and practical:** Blending into the modern aerodynamic lines of Anglia is the raked-back rear window. It has practical advantages as well as distinction . . . allows vastly increased headroom for rear seat passengers . . . provides full width rear vision without distortion . . . reduces sun-glare and breaks vision-obscuring beat of rain . . . lets the luggage trunk lid open more fully. Yet another example of practicability is the way the tips of the handsome tail-light assemblies allow the driver to see the rear extremities of the car —making backing-up much easier. And in the big, all-round visioned area of safety-glass, opening rear and front quarter windows provide draught-free ventilation.



**43" wide doors** allow movement in or out of front or rear seat without knocking heads or knees or snagging stockings. Door stops hold them conveniently open as required and they close with precision ease. Their trim matches the overall two-toned smartness of the interior. Window and lock controls are placed for easiest use and out of reach of children in the rear seat. Padded armrests add another comfort feature.



**ENGINE:** Four cylinder O.H.V. Bore 3.188" — Stroke 1.906". Cubic capacity 60.82 cubic inches (997 c.c.). Compression ratio 8.9:1 B.H.P. (nett) 39 at 5,000 r.p.m. Torque 52.5 lb./ft. at 2,700 r.p.m.

**LUBRICATION:** External rotor type pump with full pressure to main, big end, camshaft and rocker bearings. Full flow externally mounted filter. Capacity of system 4 imperial pints. Fuel System: Down draught carburettor with aircleaner, cam operated diaphragm pump and sediment bowl. Tank capacity 7 imperial gallons.

**TRANSMISSION:** Single dry plate clutch, cushioned hub. Hydraulic clutch release. Remote control floor gear change.

Gearbox: Four-speed, synchromesh on second, third and top. Overall ratios — 16.987:1, 9.884:1, 5.826:1, 4.125:1 (direct). Reverse 22.292:1.

Rear Axle: Semi-floating. Pressed steel banjo housing, with hypoid gearing. Ratio 4.125:1.

## SPECIFICATIONS

**SUSPENSION:** Front: Independent coil springs mounted on special telescopic double acting hydraulic shock absorbers. Torsion anti-roll bar incorporated. Rear: Longitudinal, asymmetrical semi-elliptic springs with hydraulic double-acting lever-type shock absorbers.

**BRAKES:** Hydraulic internal expanding 8" diameter. Two leading shoes on front, leading and trailing on rear. Total lining area 76.8 square inches. Service or foot brake on all four wheels, hand-brake on rear wheels only.

**STEERING:** High efficiency recirculating ball-type, ratio 14:1, two spoke steering wheel, safety design.

**WHEELS & TYRES:** Pressed wheels with wide base rims, tyres 5.20x13 tubeless, tubed optional.

**INSTRUMENTS:** Located in panel directly in front of driver, includes speedometer, odometer, fuel gauge, temperature gauge, and ignition, oil pressure, main beam and direction indicator warning lights. Panel light.

**CONTROLS:** Choke, key operated ignition/starter switch. Turn and pull lighting switch. Windscreen wiper switch, dip switch on steering column. Hood lock control.

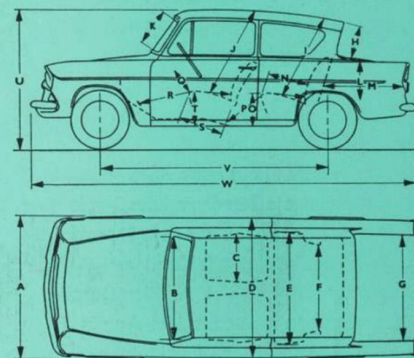
**GENERAL EQUIPMENT:** Two safety padded interior sun visors. Combined door operated courtesy light and interior light. Ash tray in fascia panel and two in rear compartment. Lockable glove box. Dual electric windscreen wipers. Moisture proof hooded headlamps 50/40 W. Separate side lamps incorporating flasher turn indicator lamps. Twin tail and stop lamps. Flasher direction indicators with self-cancelling arm on steering column. Interior rear view mirror. Provision for fitting fresh air heater and demister and radio.

*Ford Motor Company of Australia Pty. Ltd., whose policy is one of continuous improvement, reserves the right, subject to such regulations as may from time to time apply, to change specifications and prices at any time without notice or incurring liability to purchasers.*

**FORD SALES COMPANY OF AUSTRALIA LIMITED**

Reg. Office: Shell Corner, 155 William St., Melbourne, C.1.

<b>A</b>	Track Front 46"	... ..Rear	... ..	<b>45.8"</b>
<b>B</b>	Windshield Width	... ..	... ..	<b>41.75"</b>
<b>C</b>	Front Seat Width	... ..	... ..	<b>19.8"</b>
<b>D</b>	Overall Width	... ..	... ..	<b>57.34"</b>
<b>E</b>	Rear Seat Width	... ..	... ..	<b>47.75"</b>
<b>F</b>	Hip Room	... ..	... ..	<b>43.0"</b>
<b>G</b>	Luggage Compartment Width	... ..	... ..	<b>54.0"</b>
<b>H</b>	Rear Window Height	... ..	... ..	<b>10.5"</b>
<b>I</b>	Rear Seat Effective Headroom	... ..	... ..	<b>36.7"</b>
<b>J</b>	Front Seat Effective Headroom	... ..	... ..	<b>37.45"</b>
<b>K</b>	Windshield Height	... ..	... ..	<b>14.75"</b>
<b>L</b>	Inside Height Luggage Compartment	... ..	... ..	<b>18.75"</b>



<b>M</b>	Luggage Compartment Length	... ..	... ..	<b>30.25"</b>
<b>N</b>	Cushion Depth	... ..	... ..	<b>17.75"</b>
<b>O</b>	Cushion Height to Floor	... ..	... ..	<b>13.35"</b>
<b>P</b>	Effective Legroom Rear	... ..	... ..	<b>37.84"</b>
<b>Q</b>	Front Seat Edge to Steering Column	... ..	... ..	<b>9.5"</b>
<b>R</b>	Effective Legroom Front	... ..	... ..	<b>44.34"</b>
<b>S</b>	Cushion Depth	... ..	... ..	<b>16.75"</b>
<b>T</b>	Cushion Height to Floor	... ..	... ..	<b>10.65"</b>
<b>U</b>	Overall Height (Laden)	... ..	... ..	<b>54.93"</b>
<b>V</b>	Wheelbase	... ..	... ..	<b>90.5"</b>
<b>W</b>	Overall Length	... ..	... ..	<b>153.5"</b>
	Ground Clearance (Laden)	... ..	... ..	<b>6.4"</b>