

CATERA 2000





Driving.

Think about what makes it exhilarating, even enticing.

It's the feeling of power and control.

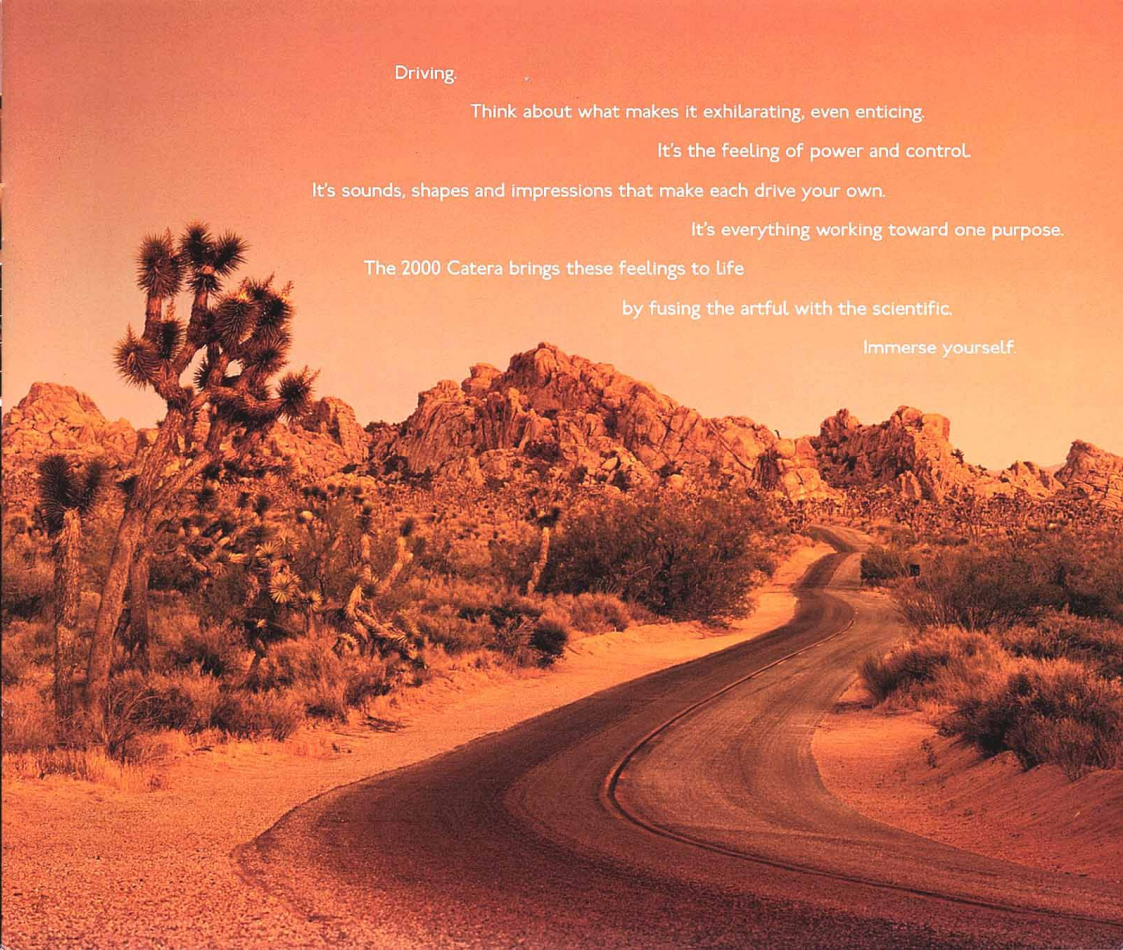
It's sounds, shapes and impressions that make each drive your own.

It's everything working toward one purpose.

The 2000 Catera brings these feelings to life

by fusing the artful with the scientific.

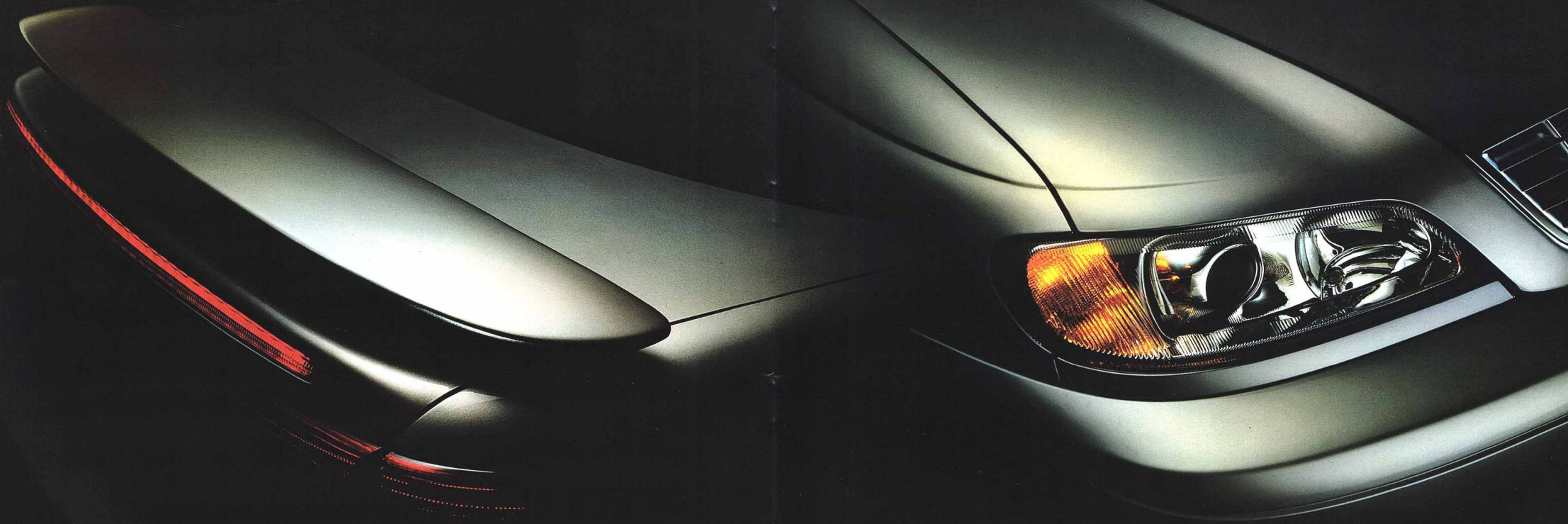
Immerse yourself.





Catera Sport shown in Platinum.

SLEEK & STRONG







IT KNOWS HOW YOU FEEL, WHAT YOU LIKE AND HOW YOU DRIVE



(AND THAT'S JUST THE DRIVER'S SEAT.)

Just look at Catera Sport's details — customized in all the right places. The interior is trimmed in brushed aluminum and leather for no other reason than to make you feel good. The Sport's front seats deliver aesthetically and functionally with large side bolsters and adjustable thigh supports, comfortably deep contours, leather seating areas, heaters, 10-way adjustments and manual lumbar supports — features that will help you dial in just the right position to get the most out of the Sport's special suspension tuning.



It's all there. Punch up the right tunes on the high-output AM/FM/cassette 8-speaker sound system, and you're ready to rock and roll. (The Catera-specific Bose® music system is also available, as is a trunk-mounted 12-disc CD changer.) Press your number on Catera's available memory driver seat and it automatically recalls your custom settings for seating and exterior rearview mirror settings. Set the dual-zone climate control system to deliver filtered air at temperatures to suit everybody. Explore the practical storage options, including the folding rear seatbacks.



Catera shown in Ebony with optional chrome wheels.



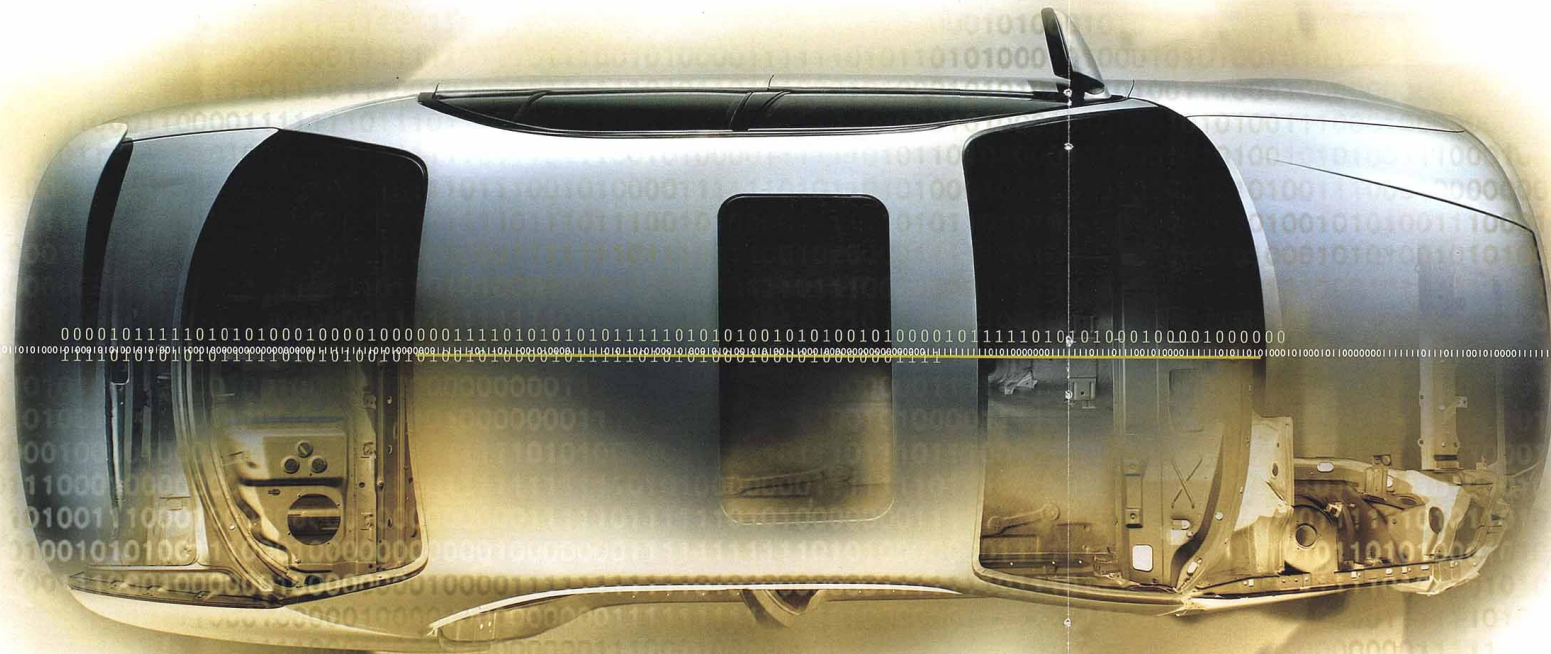


Catera interior shown in Neutral.

LEAN & MEAN



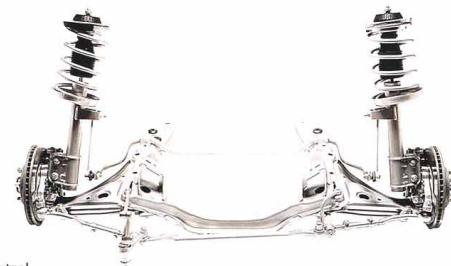
Mix polish with performance, form with function and artistry with aerodynamics. The result speaks for itself. Smooth contours, strong lines and flush surfaces provide more than a hint of Catera Sport's performance potential.



Outside is pure expression,
inside is pure science. Under its handsomely complex body
contours is a unibody so strong it ranks among
some of the world's finest luxury cars.

This is the embodiment of Catera.
Get what you deserve.

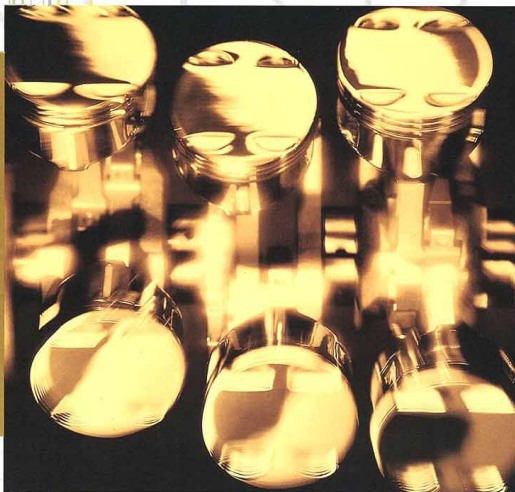
BRING IT ON



The right combination of equipment makes performance, balance and control not only possible, but enjoyable. Take Catera's front-engine/rear-drive layout

with four-wheel independent suspension — the classic drivetrain and chassis layout for a performance-oriented machine. Catera's standard road-reading, all-speed traction control system uses both engine management and brake system functions to help manage and customize Catera's engine power to available traction levels for those times when road surfaces are less than inviting. Catera's high-speed autobahn tuning is clearly evident, as are its manners carving through corners. Standard Automatic Level Control helps ensure optimum performance by maintaining an even ride height regardless of who or what is riding with you. Powerful four-wheel disc brakes with anti-lock electronics deftly manage stopping. Building on all of this, Catera Sport's unique springs, dampers, wheels and tires give this model a distinctly taut handling feel.

BEAUTY & THE BEAST




When it comes right down to it, everybody wants to drive a car that performs with intelligent authority. It simply feels good. Case in point...Catera's ever-thinking 4-speed automatic transmission. It monitors how you drive in millisecond increments and uses this data to deliver gear-shifting performance that adapts to your driving style and situation. Further power management comes from the transmission's three shift modes: "Sport," "Normal" and "Winter." Providing an abundance of power to the transmission is Catera's sophisticated 3.0 liter V6. Benefiting from a host of racing-inspired technologies (the most notable of which is the multi-ram tuned intake manifold), the engine produces 200 horsepower and 192 ft-lbs of torque.



BETTER THAN A BUTLER



Whether you're looking for a great restaurant or an elusive cross-street, the integrated three-button OnStar System is standard on Catera and ready with personalized concierge, safety and information services* that you won't find on any other car in Catera's class. This technically sophisticated, yet easy-to-use, service employs a cellular communications system linked to advanced Global Positioning System (GPS) satellites to enhance your

road-going life. With the push of a single button, you're connected to trained OnStar Advisors who are on duty 24 hours a day, every day. Say you have a flat tire or run out of gas. Just press the OnStar button and an OnStar Advisor will answer your call, live. Using GPS technology, OnStar can pinpoint your location and contact help for you. Should your Catera's air bags deploy, your OnStar System will automatically send a call for help with your location to the OnStar Center. There, trained Advisors will contact emergency services, if needed. 

*OnStar uses existing emergency service providers and cellular telephone and satellite technologies. OnStar requires cellular telephone service to be available and operating for features to function properly.

SAFE & SOUND



There are two aspects to automotive safety:

avoiding collisions and working better to survive

them. Catera addresses safety on both fronts. Technically advanced driving aids such as anti-lock braking systems (ABS), traction enhancers (all-speed traction control and the transmission's "Winter" mode) and speed-sensitive power steering help drivers avoid collisions before they happen. Catera's excellent outward visibility gives drivers broad sight lines, providing a clear view of traffic conditions. Building on the excellent



halogen-powered headlamps standard on Catera, Catera Sport illuminates the road ahead with even more powerful Xenon High-Intensity Discharge

(HID) headlamps. In the event a crash should occur, Catera provides driver and front passenger front and side-impact air bags, as well as front and rear crush zones. (Catera's front safety belts, with pretensioners and web locks, should always be worn, however.) And remember, children should always be secured in proper child restraints and are safer in the rear seat.* Catera's commitment to personal security shows in its standard features, which range from the more obvious items such as Remote Keyless Entry (that illuminates the interior as it unlocks the doors), to subtle features such as pinch-guard (a feature that helps prevent being caught by a quickly closing power window).

*See A Note About Child Safety on the inside back cover.





AN OWNERSHIP PACKAGE BEFITTING A CADILLAC

The Catera owner is a special individual who deserves the distinction of special privileges.

The first of these entitlements is Cadillac Roadside Service. It is available 24 hours a day in the U.S. and Canada at no charge for the first 48 months or 50,000 miles of ownership, whichever comes first. Just phone 1-800-882-1112. Trip Interruption Protection* is another Catera owner privilege. It can reimburse you for hotel, food and even alternate transportation incurred as a result of a warranted repair that interrupts an owner's travels. This coverage is also in effect for 48 months or 50,000 miles, whichever comes first. Of course, GM's Bumper-to-Bumper Limited Warranty helps safeguard your Catera and its tires for the same length of time with no deductible. Alternate transportation is also available whenever your Catera is in for warranted repairs. See your dealer for details. Finally, Cadillac's Gold Key Delivery System provides you with a personalized introduction to your new Catera and key dealership personnel. You'll also

*See your dealer for details.

receive a special package of ownership materials. Acquisition of a new Catera can also be an experience in exclusive treatment. The Cadillac-exclusive Custom Xpress Delivery System can usually find and deliver the Catera you prefer within a matter of days. Otherwise, your Catera can be special ordered. After that, it's merely a choice between traditional purchase through GMAC financing or a lease. SmartLease allows you to acquire a new Catera more often, minimizes costs and lowers monthly payments compared to conventional purchase. SmartLease Plus does all this without the bother of monthly payments. Your dealer has all the details. When you use The GMMasterCard®, you receive 5% Earnings¹ on purchases. You can earn up to \$500.00 per Account Year that

can be used toward the purchase or lease of a new Catera. Your Earnings could save you hundreds, even thousands, of dollars over and above any other discount or incentive GM may be offering. To apply for your GM Card, call 1-800-8GM-CARD 24 hours a day. You could be pleasantly surprised.



cadillac.com

¹See The GMCard Earnings Program Rules for terms and conditions.

STANDARD FEATURES

INTERIOR

Air bags*, front and side, driver and front passenger
 Analog cluster
 Ashtray, front, illuminated
 Auxiliary power outlet in console
 Brake/transmission shift interlock
 Cabin air quality filter
 Carpeted trunk
 Child lockout, rear windows
 Child seat restraints, outboard seats
 Child seat tether anchors, integrated rear
 Child security locks, rear doors
 Cigarette lighters, front and rear
 Climate control
 ~electronic
 ~dual zone
 ~recirculation
 Cruise control
 Cupholders, in center console armrest
 Door pocket storage bins, all doors
 Driver seat adjuster, 8-way power
 Glove box, illuminated, lockable, air conditioned
 Head restraints, front and rear, adjustable
 Ice warning indicator
 Illuminated entry
 Lumbar supports, manual
 Map lights and rear reading lights
 OnStar Communication and Assistance Service,
 1-800-667-8277
 Perimeter lighting
 Radio, AM stereo/FM stereo/cassette/8 speakers
 Rear center armrest, folding w/cupholders
 Rear seatback, folding
 Rear window defogger
 Rearview mirror, inside, electrochromic
 Retained accessory power
 Safety belt, manual, lap/shoulder, all seats
 Safety belts, five-position height adjustment,
 all outboard seats
 Seating areas, leather
 Sport shift select mode

Steering wheel, adjustable tilt
 Steering wheel audio system controls
 Steering wheel, leather-wrapped
 Third-gear start capability (winter mode)
 Trunk package net
 Vanity mirrors, illuminated
 Windows, power, express up and down
 with pinch-guard

EXTERIOR

Daytime running lamps
 Door locks, auto, programmable
 Exhaust tips, chrome
 Front fog lamps
 Fuel door unlock, remote
 Gas cap tether
 Headlamps, wiper-activated
 Level control, automatic
 Lights, hazard warning
 Outside rearview mirrors, break-away,
 power and heated
 Remote keyless entry
 Spare tire, full-size
 Tinted solar glass windows
 Transponder key theft-deterrent system
 Trunk release, remote
 Twilight Sentinel
 Unibody construction
 Wheels, 5-spoke cast aluminum, painted

OPTIONAL FEATURES

Bose audio system, AM stereo/FM
 stereo/cassette/8 speakers/RDS/
 weather band/single-slot CD/
 TheftLock
 CD changer, 12-disc, trunk-mounted
 (dealer installed)
 Cellular phone, integrated portable
 (dealer installed)
 Engine block heater (dealer installed)
 Heated front seat, variable
 Rear sunshade, power
 Sunroof, power
 Wheels, 5-spoke cast aluminum,
 chrome finished

CATERA LUXURY PACKAGE

Theft-deterrent system
 Universal garage door opener
 Memory function - 3-position
 ~driver's seat
 ~inside rearview mirror
 ~outside rearview mirror
 Front passenger 8-way power seat

CATERA SPORT PACKAGE

Exterior colors: Ebony, Ivory or Platinum
 Interior: Ebony leather
 Heated front seat, variable
 Specific gunmetal interior trim
 Specific matte silver grille
 Specific rear spoiler
 Specific Sport seats - 10-way adjustable
 Specific Sport ZJI suspension
 Specific 5-spoke machined wheels
 17" wheels and tires 235/45R17 - H rated
 Xenon High-Intensity Discharge (HID) headlamps

Note: Photographs in this catalog feature vehicles
 with optional equipment shown.

* Always use safety belts and proper child restraints,
 even with air bags. Children are safer when properly
 secured in a rear seat. See the Owner's Manual for more
 safety information.

ENGINE

3.0L 24-valve DOHC V6 (54")
 200 hp, 192 ft-lbs torque
 Cast iron block, aluminum heads
 Compression ratio: 10.0:1
 Coolant: DEX-COOL, long life,
 up to 150,000 miles*
 Dual, stainless steel exhaust system
 Fuel injection
 Low emission vehicle compliant
 Machined intake/exhaust ports
 On-Board Diagnostics II
 Recommended fuel: Premium
 Scheduled tune-up interval: 100,000 miles**
 Spark plugs: Triple tipped
 Tuned, variable induction system

DRIVELINE

Final drive ratio: 3.9:1
 Four-speed electronic
 automatic transmission
 Ratios:
 1st: 2.856:1
 2nd: 1.62:1
 3rd: 1.0:1
 4th: .723:1
 Front engine/rear-wheel drive
 Transmission fluid: Dexron-III, lifetime**

SUSPENSION

Brakes:
 Power, 4-wheel disc
 Front: 11.65 inches
 Rear: 11.26 inches
 Anti-lock system, 4-wheel
 Quick power brake booster
 Fully independent:
 Front: MacPherson strut, coil spring
 Rear: Multi-link, coil spring
 Stabilizer bars:
 Front: 1.02 inch
 Rear: .59 inch
 Steering:
 Type: Roller ball, recirculating
 Speed-Sensitive
 Ratio, overall: 14.8:1

Tires: P225/55HR16 Goodyear Eagle
 RS-A M+S blackwall
 Traction control, engine/brake
 management, full-range
 Turning circle: 36.26 feet
 Turns, lock-to-lock: 3
 Wheels: 16" x 7" cast aluminum

PERFORMANCE

0-60 mph: 8.5 seconds
 60-0 braking: 132 feet
 EPA estimated MPG: 18 city/24 hwy.[†]
 Standing 1/4 mile: 16.5 seconds
 Top speed: 125 mph^{††}

CAPACITIES

Oil: 6.0 quarts
 Coolant: 10.57 quarts
 Fuel: 16 gallons
 Trunk: 14.5 cu. ft.
 Battery: 12 volt
 Towing: 1,000 lbs.
 Tire inflation: 32 psi (all)
 Curb weight: 3,770 lbs.

INTERIOR DIMENSIONS

Head room:
 Front: 38.7"/982 mm
 Rear: 38.4"/975 mm
 Leg room:
 Front: 42.2"/1071 mm
 Rear: 37.5"/953 mm
 Hip room:
 Front: 54.9"/1394 mm
 Rear: 55.2"/1401 mm
 Shoulder room:
 Front: 54.6"/1388 mm
 Rear: 55.9"/1419 mm
 Seating capacity: 2/3

EXTERIOR DIMENSIONS

Wheelbase: 107.4"/2730 mm
 Overall length: 192.2"/4882 mm
 Overall width: 70.3"/1786 mm
 Width, front: 59.3"/1506 mm
 Width, rear: 59.8"/1520 mm



Catera Standard
 16" x 7" painted 5-spoke
 aluminum wheel.



Catera Optional
 16" x 7" chrome finished
 5-spoke aluminum wheel.



Catera Sport wheel and tire
 17" x 7" 5-spoke
 aluminum wheel.



Standard 8-speaker audio
 system with AM stereo/FM
 stereo, cassette, TheftLock.



Optional Bose 8-speaker
 audio system with AM
 stereo/FM stereo, cassette,
 single-slot CD, RDS,
 weather band, TheftLock.

* Maintenance needs vary with different uses and driving conditions. See the Owner's Manual for
 more information. Vehicles with Dex-Cool brand coolant must be refilled only with Dex-Cool.

** Maintenance needs vary with different uses and driving conditions. See your Owner's Manual
 for more information.

[†] Preliminary mileage figures determined by GM. 2000 EPA mileage estimates not available at time
 of printing. See your Authorized Cadillac Catera dealer for details.

^{††} Top vehicle speed varies depending on tire selected. See dealer for details.

IMPORTANT WORDS ABOUT THIS CATALOG

We have tried to make this catalog comprehensive and factual. We reserve the right, however, to make changes at any time, without notice, in prices, colors, materials, equipment, specifications, models and availability. Since information may have been updated since the time of printing, please check with your Catera dealer for complete details.

Cadillac reserves the right to lengthen or shorten the model year for any product for any reason, or to start and end model years at different times.

ENGINES

Cateras are equipped with engines produced by different operating units of GM, its subsidiaries or suppliers to GM worldwide.

ASSEMBLY

Cateras and their components are assembled or produced by different operating units of General Motors, its subsidiaries or suppliers to GM worldwide. We sometimes find it necessary to produce Cateras with different or differently sourced components than originally scheduled. Since some options may be unavailable when your vehicle is assembled, we suggest that you verify that your vehicle includes the equipment you ordered or, if there are changes, that they are acceptable to you.

UPDATED SERVICE INFORMATION

Catera regularly sends its dealers useful service bulletins about Catera products. Catera monitors product performance in the field. We then prepare bulletins for servicing our products better. Now you can get these bulletins, too. Ask your dealer. To receive ordering information, call toll-free 1-800-551-4123.

SAFETY AND SECURITY

The following are just some of the features found on the 2000 Catera:
OCCUPANT PROTECTION: Adjustable front shoulder belt guides • Adjustable rear shoulder belt guides (outboard) • Air bags, driver and front passenger • Air bags, side • Automatic door locks • Safety belt cinch capability for child seats • Child security door locks • Integral child restraints • Center rear lap and shoulder belt • Power window lockout • Safety belt energy mgmt force limiter/seat web • Safety belt pretensioners (front outboard) **SECURITY:** Anti-lockout feature • Audible theft-deterrent system • Battery rundown protection • Laser-etched VIN plate • PASS-Key theft-deterrent • Remote deck release • Remote fuel door release • Remote keyless entry • OnStar features including: Stolen vehicle tracking/emergency communication **CRASH AVOIDANCE:** Anti-lock brakes, front and rear • Brake/transmission shift interlock • Disc brakes, front and rear • Audible wear indicator • Maintenance-free battery • Steering wheel controls • Tires with built-in tread wear indicators • Traction control • Automatic daytime running lamps • Cornering lamps • Door warning lights or reflectors • Fog lamps • Halogen headlamps • Inside electrochromic rearview mirror • Outside rearview mirrors • Rear window defogger • Side window defogger • Front, tinted glass windshield • Automatic exterior lamp control • Wiper-activated headlamps.

WARRANTY

The GM 4-year/50,000-mile Gold Key Bumper-to-Bumper limited warranty covers repairs for any new Catera, including labor and parts, to correct any defects in material or workmanship occurring during the warranty period. The complete vehicle, including tires, will be covered for 4 years or 50,000 miles, whichever comes first, except for adjustments and normal maintenance items. Plus free towing and a portfolio of other services. There is no deductible on any Catera warranty. See your Catera dealer for terms of these limited warranties.

CORROSION PROTECTION

Cateras are designed and built to resist corrosion. All body sheet metal components are warranted against rust-through corrosion for 6 years/100,000 miles, whichever comes first. There is no deductible for rust-through repairs. Application of additional rust-inhibiting materials is not required under the corrosion coverage and none is recommended.

THEFT DETERRENCE

Every Catera includes a visible vehicle identification number, laser-etched VIN plate, theft-deterrent steering column lock, theft-deterrent key locking system and an ignition key removal audible reminder.

A NOTE ABOUT CHILD SAFETY

Children generally are safer if they are secured in a rear seat using appropriate child safety seats and restraints, which is why General Motors recommends that child safety seats be properly secured in a vehicle's rear seat. Never place a rear-facing infant restraint in the front seat of any vehicle equipped with an active air bag. See your Owner's Manual and child safety seat instructions for more information.

CATERA, CADILLAC, the CADILLAC EMBLEM, CADILLAC ROADSIDE SERVICE, GENERAL MOTORS, the GM EMBLEM, GM PROTECTION PLAN, THE GM CARD, DEXRON, DEX-COOL, ONSTAR, the ONSTAR EMBLEM and TWILIGHT SENTINEL are registered trademarks of the General Motors Corporation. CADILLAC OWNER PRIVILEGES is a service mark of the General Motors Corporation. THEFTLOCK is a registered trademark of Delphi Technologies, Inc. GMAC and SMARTLEASE are registered trademarks of the General Motors Acceptance Corporation.

Litho in USA. ©1999 GM Corp. All Rights Reserved. Always use safety belts and proper child restraints, even with air bags. Children are safer when properly secured in a rear seat. See the Owner's Manual for more safety information.



Official Sponsor of the
2000 U.S. Olympic Team

CATERA COLOR GUIDE

EXTERIOR COLORS

11 Ivory

41 Rainforest

57 Platinum

58 Sapphire

68 Sand

75 Cranberry

80 Ebony

97 Sage



HARRIET FAREN

FREDERICK CHEVROLET • CADILLAC • OLDSMOBILE • GEO • TOYOTA
1505 Quentin Road, Lebanon, PA 17042

Residence
717/272-8118



717/274-1461
800/222-5523



This familiar coat of arms symbolizes the status and courage of the French noble Le Sieur Antoine de la Mothe Cadillac, founder of Detroit in 1701.

Since its adoption by Cadillac Motor Car Company in 1902, the crest has evolved to reflect the advances in technology and design that stand as hallmarks of the Cadillac Division. With the onset of this new millennium, there comes a new vision for Cadillac, and hence a new crest.

IMPORTANT WORDS ABOUT THIS CATALOG

We have tried to make this catalog comprehensive and factual. We reserve the right, however, to make changes at any time, without notice, in prices, colors, materials, equipment, specifications, models and availability. Since information may have been updated since the time of printing, please check with your Catera dealer for complete details.

Cadillac reserves the right to lengthen or shorten the model year for any product for any reason, or to start and end model years at different times.

ENGINES

Cateras are equipped with engines produced by different operating units of GM, its subsidiaries or suppliers to GM worldwide.

ASSEMBLY

Cateras and their components are assembled or produced by different operating units of General Motors, its subsidiaries or suppliers to GM worldwide. We sometimes find it necessary to produce Cateras with different or differently sourced components than originally scheduled. Since some options may be unavailable when your vehicle is assembled, we suggest that you verify that your vehicle includes the equipment you ordered or, if there are changes, that they are acceptable to you.

UPDATED SERVICE INFORMATION

Catera regularly sends its dealers useful service bulletins about Catera products. Catera monitors product performance in the field. We then prepare bulletins for servicing our products better. Now you can get these bulletins, too. Ask your dealer. To receive ordering information, call toll-free 1-800-551-4123.

SAFETY AND SECURITY

The following are just some of the features found on the 2000 Catera:
OCCUPANT PROTECTION: Adjustable front shoulder belt guides • Adjustable rear shoulder belt guides (outboard) • Air bags, driver and front passenger • Air bags, side • Automatic door locks • Safety belt cinch capability for child seats • Child security door locks • Integral child restraints • Center rear lap and shoulder belt • Power window lockout • Safety belt energy mgr. force limiter/rear web • Safety belt pretensioners (front outboard) **SECURITY:** Anti-lockout feature • Audible theft-deterrent system • Battery rundown protection • Laser-etched VIN plate • PASS-Key theft-deterrent • Remote deck release • Remote fuel door release • Remote keyless entry • OnStar features including: Stolen vehicle tracking/emergency communication **CRASH AVOIDANCE:** Anti-lock brakes, front and rear • Brake/transmission shift interlock • Disc brakes, front and rear • Audible wear indicator • Maintenance-free battery • Steering wheel controls • Tires with built-in tread wear indicators • Traction control • Automatic daytime running lamps • Cornering lamps • Door warning lights or reflectors • Fog lamps • Halogen headlamps • Inside electrochromic rearview mirror • Outside rearview mirrors • Rear window defogger • Side window defogger • Front, tinted glass windshield • Automatic exterior lamp control • Wiper-activated headlamps.

WARRANTY

The GM 4-year/50,000-mile Gold Key Bumper-to-Bumper Limited warranty covers repairs for any new Catera, including labor and parts, to correct any defects in material or workmanship occurring during the warranty period. The complete vehicle, including tires, will be covered for 4 years or 50,000 miles, whichever comes first, except for adjustments and normal maintenance items. Plus free towing and a portfolio of other services. There is no deductible on any Catera warranty. See your Catera dealer for terms of these limited warranties.

CORROSION PROTECTION

Cateras are designed and built to resist corrosion. All body sheet metal components are warranted against rust-through corrosion for 6 years/100,000 miles, whichever comes first. There is no deductible for rust-through repairs. Application of additional rust-inhibiting materials is not required under the corrosion coverage and none is recommended.

THEFT DETERRENCE

Every Catera includes a visible vehicle identification number, laser-etched VIN plate, theft-deterrent steering column lock, theft-deterrent key locking system and an ignition key removal audible reminder.

A NOTE ABOUT CHILD SAFETY

Children generally are safer if they are secured in a rear seat using appropriate child safety seats and restraints, which is why General Motors recommends that child safety seats be properly secured in a vehicle's rear seat. Never place a rear-facing infant restraint in the front seat of any vehicle equipped with an active air bag. See your Owner's Manual and child safety seat instructions for more information.

CATERA, CADILLAC, the CADILLAC EMBLEM, CADILLAC ROADSIDE SERVICE, GENERAL MOTORS, the GM EMBLEM, GM PROTECTION PLAN, THE GM CARD, DEXRON, DEX-COOL, ONSTAR, the ONSTAR EMBLEM and TWILIGHT SENTINEL are registered trademarks of the General Motors Corporation. CADILLAC OWNER PRIVILEGES is a service mark of the General Motors Corporation. THEFTLOCK is a registered trademark of Delphi Technologies, Inc. GMAC and SMARTLEASE are registered trademarks of the General Motors Acceptance Corporation.

Litho in USA ©1999 GM Corp. All Rights Reserved. Always use safety belts and proper child restraints, even with air bags. Children are safer when properly secured in a rear seat. See the Owner's Manual for more safety information.



Official Sponsor of the
2000 U.S. Olympic Team



HARRIET FAREN

FREDERICK CHEVROLET • CADILLAC • OLDSMOBILE • GEO • TOYOTA
1505 Quentin Road, Lebanon, PA 17042

Residence
717/272-8118



717/274-1461
800/222-5523



This familiar coat of arms symbolizes the status and courage of the French noble Le Sieur Antoine de la Mothe

Cadillac, founder of Detroit in 1701.

Since its adoption by Cadillac Motor Car Company in 1902, the crest has evolved to reflect the advances in technology and design that stand as hallmarks of the Cadillac Division. With the onset of this new millennium, there comes a new vision for Cadillac, and hence a new crest.

CATERA COLOR GUIDE

EXTERIOR COLORS

11 Ivory



41 Rainforest



57 Platinum



58 Sapphire



68 Sand



75 Cranberry



80 Ebony



97 Sage

LEATHER INTERIORS



605 Neutral

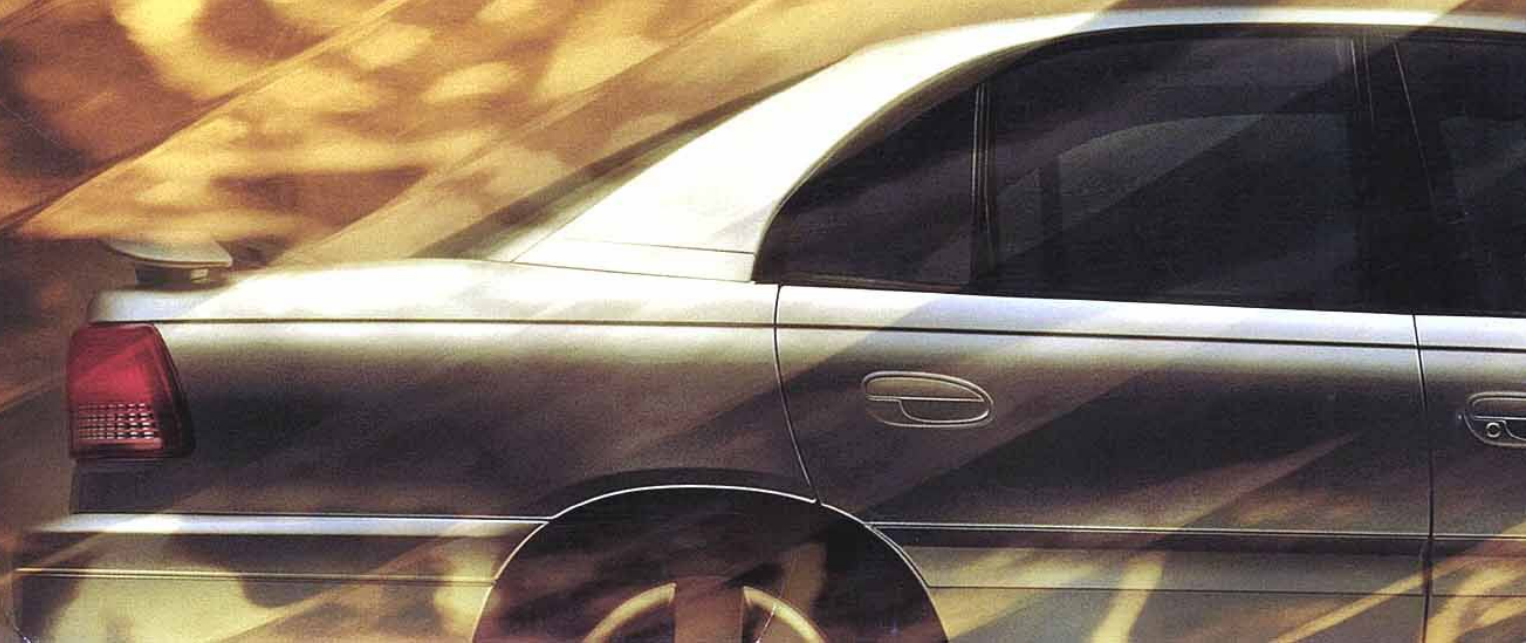


805 Charcoal



825 Stone

cadillac.com



cadillac.com

CATERA 2000

