

ELDORADO 2000



Your dream is alive. And realized in Eldorado.
Nothing else on the road so perfectly expresses your individualism
and personal achievement. The bold design and character.

The power and handling. The luxury and convenience.

It's all there, wrapped up in one word.

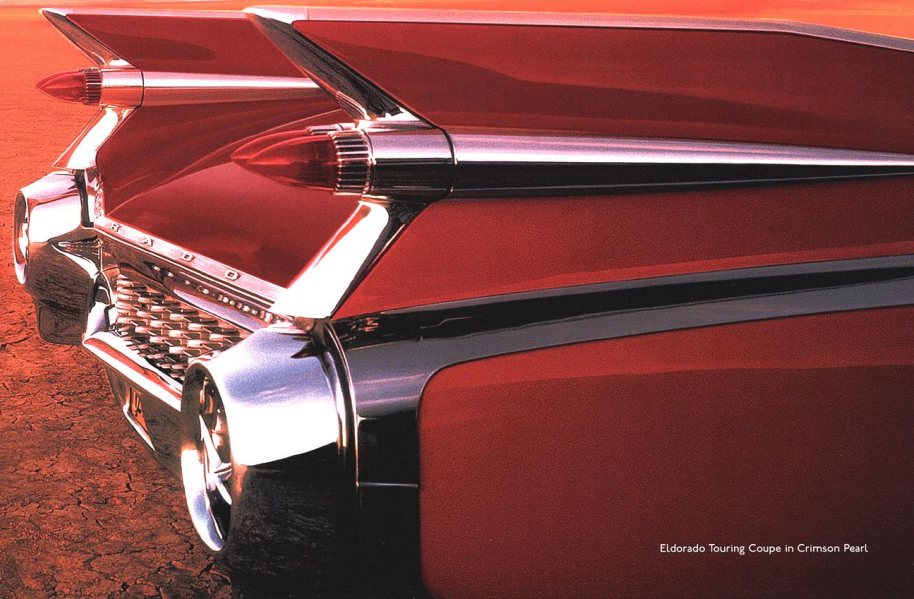
And one legendary automobile. Eldorado.

Best of all, this is one dream that always comes true.


Thanks to the fusion of art and science.



STYLE & GRACE



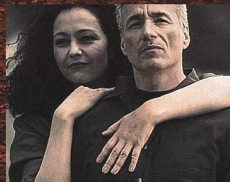
Eldorado Touring Coupe in Crimson Pearl



This is where you take control of things. Buckle in and feel the caress of perforated Nuance leather seating areas. Reflect on the grain of fine Zebrano wood trim. Then fire up the reengineered, 300-horsepower Northstar V8. As it idles out for a moment, notice the all-business analog instrumentation and Bose® music system with cassette and single-slot CD. While you listen, an electronic dual-zone climate control individually tailors the environment to you and your passenger. And that environment is adjustable with fingertip controls on the available wood-trimmed steering wheel of Eldorado Touring Coupe. After all, you're in control. This is your dream.


Eldorado Touring Coupe interior shown in Black

PRIDE & DISTINCTION



Eldorado in Crimson Pearl



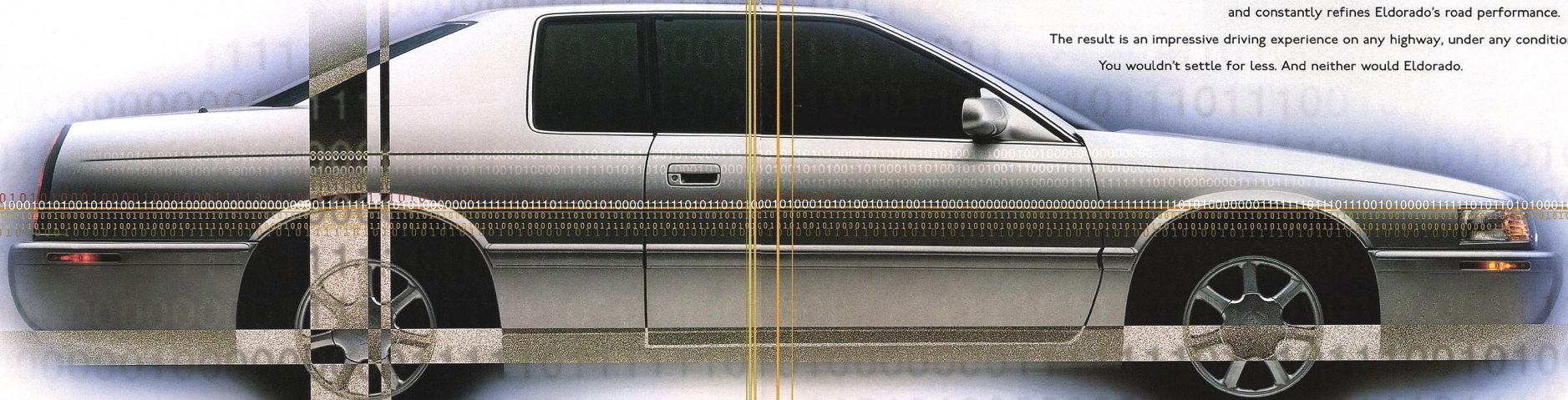
A detailed photograph of the front interior of a Lincoln Eldorado. The image shows two leather-upholstered seats with horizontal stitching and integrated seatbelts. The dashboard, center console, and steering wheel are visible, featuring a combination of dark and light wood trim. The word "ELDORADO" is embossed on the passenger side of the dashboard. The lighting is warm, highlighting the textures of the leather and wood.

One glance will convince you. The time you spend behind the wheel of Eldorado is a well-earned reward. Sharply tailored Nuance leather seating areas cradle you in front or back. Front seats are eight-way power adjustable with an available memory package. Analog instruments are standard. You'll also appreciate the leather-wrapped steering wheel with a Tilt-Wheel adjustable steering column and fingertip controls. These regulate the dual-zone climate system and six-speaker sound system. A wood-trimmed steering wheel is also available for Eldorado. Remember, aesthetics are an integral part of luxury.

The aesthetics of Eldorado overlay its core of Northstar System science.
In fact, the Northstar System is

a computer-orchestrated network of technology
that is integrated into every driving dynamic of Eldorado

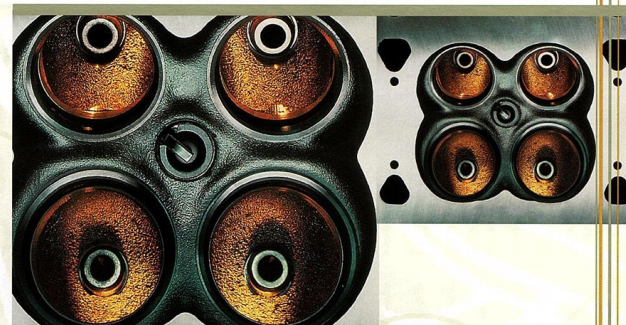
and constantly refines Eldorado's road performance.
The result is an impressive driving experience on any highway, under any conditions.
You wouldn't settle for less. And neither would Eldorado.



POWER & PERFORMANCE



For the second time in history, Eldorado's 32-valve DOHC Northstar engine resets the bar for performance and innovation. In fact, what has been added to this V8 would gladden the heart of any pit-row mechanic. Northstar's aluminum cylinder heads are all new. They are upgraded with larger intake valves for better breathability and slightly smaller exhaust valves for enhanced flow velocity. This translates into

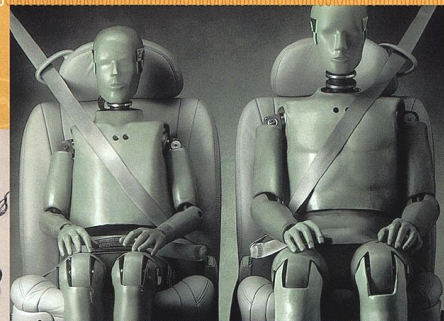


enhanced combustion for higher efficiency*

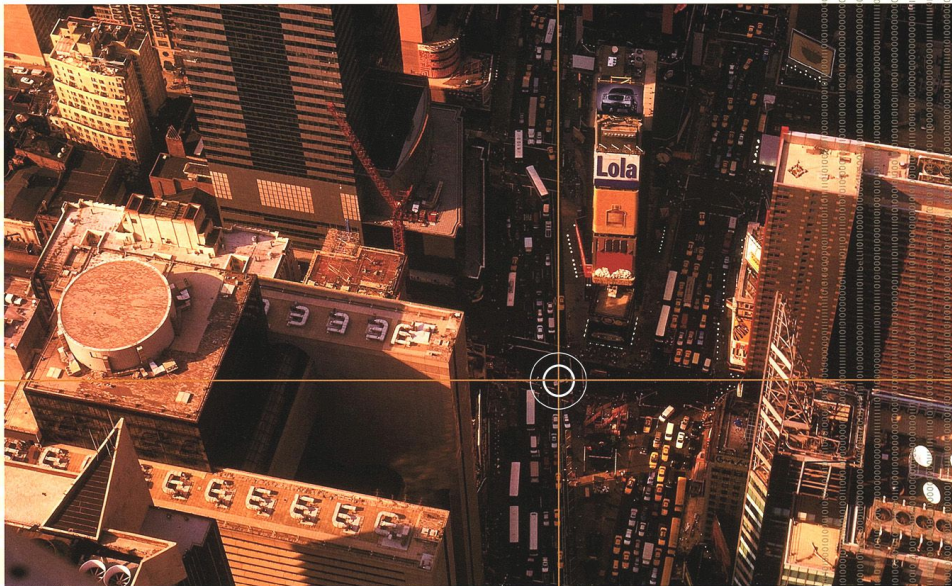
and lower emissions. And since the sound of performance is as important as its application, the Northstar's new central-feed intake plenum provides a more refined and stirring note of open-throttle power. Deeper inside this enhanced engine, you will find race-inspired roller lifters and specially re-profiled camshafts. This technology helps cut valvetrain friction by up to 50 percent and puts more power to work for you. In fact, the Northstar V8 easily surpasses the one-horsepower-per-cubic-inch performance threshold. Furthermore, ignition energy is increased 130 percent in this engine, thanks to new coil "cassettes" mounted atop each cylinder bank. With these, eight coils fire eight spark plugs individually. And spark plug wires are eliminated entirely. Finally, engine-driven accessories such as the generator and AC compressor are now mounted directly to the block for quieter operation. After all, you should be the only thing causing a stir in Eldorado.

*EPA estimated MPG 17 city, 28 highway.

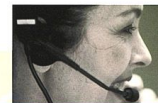


[illegible]

*Always use safety belts and proper child restraints, even with air bags. Children are safer when properly secured in a rear seat. See the Owner's Manual for more safety information. Please see last page for A Note About Child Safety.



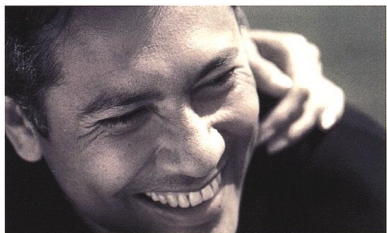
SERVICE & SECURITY



You knew exactly where you were going all your life. And you got there on your own terms. Still, there are times when directions would come in handy. For safety, security, information services and more, there is the OnStar® Service. All you do is push a button and you're connected to one of the OnStar Advisors who are on duty 24 hours a day, 365 days a year. They can pinpoint your location and provide directions to virtually any location in the U.S. or Canada. OnStar Advisors can also make restaurant and hotel reservations, contact emergency road service and provide your location, and more. For example, if the air bags ever deploy in your Eldorado, an OnStar Advisor automatically calls for emergency help to your location if you cannot be contacted in your vehicle. It's all made possible through OnStar cellular communications technology and Global Positioning System satellites. This GPS link can also help OnStar track and assist authorities to locate your Eldorado if it's ever stolen. You already know how great it is to be on your own. But it's even better to know that help is there when you need it.



*OnStar uses existing emergency service providers and cellular telephone and satellite technologies. OnStar requires cellular telephone service to be available and operating for features to function properly.



RIGHTS & PRIVILEGES

The Eldorado owner is a true individual and, along with that distinction, deserves special privileges. The first of these exclusive owner privileges is Cadillac Roadside Service. It is available 24 hours a day in the U.S. and Canada, at no additional charge for the first 48 months or 50,000 miles of ownership, whichever comes first. Just phone 1-800-882-1112. Trip Interruption Protection is another Eldorado owner privilege. It can reimburse you for hotel, food and even alternate transportation incurred as a result of a warranted repair that interrupts an owner's travels. This coverage is also in effect for 48 months or 50,000 miles, whichever comes first. Of course, General Motors Bumper-to-Bumper Limited Warranty helps safeguard your Eldorado and its tires for the same length of time with no deductible. Alternate transportation options are also available whenever your Eldorado is in for warranted repairs. For complete details, terms and conditions

of Cadillac Roadside Service, Trip Interruption Protection and GM Bumper-to-Bumper Limited Warranty, please see your dealer. Finally, Cadillac's Gold Key Delivery System provides you with a personalized introduction to your new Eldorado and key dealership personnel. You'll also receive a special package of ownership materials. Acquisition of a new Eldorado can be an experience in exclusive treatment. The Cadillac-exclusive Custom Xpress Delivery System can usually find and deliver the Eldorado of your dreams within a matter of days. Otherwise, your Eldorado can be custom ordered from the factory. After that, you can choose between traditional purchase, or obtain GMAC financing or a lease. A GMAC SmartLease may allow you to acquire a new Eldorado more often and with lower monthly payments compared to conventional purchase. SmartLease Plus does all this without the bother of monthly payments. Your dealer has all the details. When you use The GM MasterCard®, you receive 5% Earnings* on purchases. You can earn up to \$500.00 per Account Year that can be used toward the purchase or lease of a new Eldorado. Your Earnings could save you hundreds, even thousands, of dollars over and above any other discount or incentive GM may be offering. To apply for your GM Card, call 1-800-8GM-CARD 24 hours a day. Just remember, these are privileges you've earned.



cadillac.com

*See The GM Card Earnings Program Rules for terms and conditions.

STANDARD FEATURES

INTERIOR

Air bags, driver and front passenger*
Analog instrument cluster
Anti-lockout: any door with key in any position and via RKE fob
Automatic programmable door locking system
Brake/transmission shift interlock
Child seat tether anchors
Cruise control
Driver information center
Electrochromic inside rearview mirror
Electronic compass mirror
Electronic dual-zone climate control with rear fan
Fingertip steering wheel controls for audio/climate control systems
Full floor console with floor shift
Head restraints, front
Headrests, rear integrated
Illuminated entry system
Illuminated front visor vanity mirrors
Nuance leather seating areas
PASS-Key II security system
Power door locks
Power 8-way front-seat adjusters/recliners
Power windows, driver express down
Programmable features:
Five auto door lock settings
RKE activation verification:
Lights flash at lock/unlock
Horn sounds at lock
Perimeter lighting
Battery storage mode
Reading lamps, front/rear
Rear window defogger
Remote fuel door release
Remote keyless entry
Remote trunk release
Retained accessory power
Safety belts with comfort feature
Theft-deterrent system, audible
Tilt-adjusting steering wheel, leather trimmed
Traction control on/off switch

EXTERIOR

Valet lockout
Zebrano wood trim
Compact spare tire with cover
Daytime running lamps
Electrochromic driver's sideview outside mirror
Enhanced body structure
Flash-to-pass headlamps
Fog lamps
Front cornering lamps
Front/rear crush zones
Power antenna
Power, heated sideview mirrors
Solar-Ray tinted glass
Stainless steel exhaust system
Steel safety cage
Tungsten-halogen headlamps
Twilight Sentinel
Wiper-activated headlamps

ETC, STANDARD

Heated front seating areas
Memory Package for 2 drivers:
8-way driver's seat plus lumbar setting
Driver's seat exit position
Outside rearview mirrors
Climate control settings
Homelaway radio settings
Programmable features, with remote or key-in memory recall, curb-view passenger mirror
Rainsense wipers
StabiliTrak

ETC, OPTIONAL

Hands-free cellular phone**
OnStar Communication and Assistance Service**, 1-800-667-8277 (midyear enhancement)
Sunroof, express open
Three-channel garage door opener
Trunk storage system**
Twelve-disc CD changer
Wood-trimmed steering wheel

ELDORADO OPTIONAL

Comfort/Convenience Package:
Heated front seating areas
Memory Package
Power front-seat 4-way lumbar
Hands-free cellular phone**
OnStar Communication and Assistance Service**, 1-800-667-8277 (midyear enhancement)
StabiliTrak
Sunroof, express open
Three-channel garage door opener
Trunk storage system**
Twelve-disc CD changer
Wood-trimmed steering wheel

* Always use safety belts and proper child restraints, even with air bags. Children are safer when properly secured in a rear seat. See the Owner's Manual for more safety information.

** Dealer installed.

Note: Photographs in this catalog feature vehicles with optional equipment shown.



Eldorado Standard:
AM/FM stereo with cassette, clock, TheftLock and six speakers



ETC Standard/Eldorado Optional:
AM/FM stereo with cassette, clock, single-slot CD, RDS, WX, DSP, TheftLock and four Bose amplified speakers

ETC PERFORMANCE

0-60 mph: 7.1 seconds
Top speed: 150 mph*

ELDORADO PERFORMANCE

0-60 mph: 7.4 second
Top speed: 112 mph
EPA Est. MPG: 17 city/28 highway**
Range:† 532 miles

ENGINE

Northstar 4.6L V8,
32-valve DOHC
ETC: 300 hp, 295 ft-lbs torque
Eldorado: 275 hp, 300 ft-lbs torque
Aluminum block and heads
Limp-home engine coolant loss protection
Compression ratio: 10.0:1
Sequential, tuned port fuel injection
Platinum-tipped spark plugs with replacement interval of up to 100,000 miles††
Crank-triggered, coil-at-plug ignition
Fuel: Regular unleaded

DRIVELINE

Transverse front-wheel drive
Four-speed automatic transmission with viscous converter clutch
Final drive ratio:
ETC: 3.71:1
Eldorado: 3.11:1

CHASSIS

StabiliTrak: ETC - standard
Eldorado - optional
Suspension: 4-wheel independent, MacPherson strut front/short-long arm rear with electronic level control
ETC: Continuously variable road-sensing suspension, StabiliTrak and road texture detection

Eldorado: Hydraulic dampeners with optional StabiliTrak
Steering: Speed-sensitive variable-assist
ETC: Magnasteer III
Eldorado: Magnasteer
Turning circle: 42.0 feet
Brakes: Power, four-wheel disc, ABS
Traction control: All speeds - brakes/engine

CAPACITIES

Oil: 7 quarts
Coolant: 12.5 quarts
Fuel: 19 gallons
Trunk: 15.3 cubic feet
Battery: 12 volts
Towing: 1000 lbs
Curb weight:
ETC: 3856 lbs/1749 kg
Eldorado: 3825 lbs/1735 kg

INTERIOR DIMENSIONS

Head room
front 37.8" (961 mm)
rear 38.3" (972 mm)
Leg room
front 42.6" (1081 mm)
rear 35.5" (901 mm)
Hip room
front 57.6" (1464 mm)
rear 55.7" (1416 mm)
Shoulder room
front 58.2" (1478 mm)
rear 57.6" (1463 mm)
Seating capacity: Five



Eldorado Std.:
16"x7" cast with
Michelin XW4
P225/60R16
S-rated blackwall



Eldorado Opt.:
16"x7" chrome
with Michelin
XW4 P225/60R16
S-rated blackwall



ETC Std.:
16"x7" cast with
Goodyear Eagle
RS-A P235/60R16
H-rated blackwall



ETC Opt.:
16"x7" chrome
ETC Opt. Tire:
Goodyear Eagle
GA P235/60ZR16
Z-rated blackwall

* Top vehicle speed varies depending on tire selected. See dealer for details.

** Preliminary mileage figures determined by GM 2000 EPA mileage estimates not available at time of printing. See your Authorized Cadillac Eldorado dealer for details.

† Estimated highway range: Multiply EPA highway estimate by fuel tank capacity.

†† Maintenance needs vary with different uses and driving conditions. See your Owner's Manual for more information.

IMPORTANT WORDS ABOUT THIS CATALOG

We have tried to make this catalog comprehensive and factual. We must reserve the right, however, to make changes at any time, without notice, in the information contained in this catalog. Since some information may have been updated since the time of printing, please check with your Cadillac dealer for complete details.

Cadillac reserves the right to lengthen or shorten the model year for any product for any reason, or to start and end model years at different times.

ENGINES

Eldorados are equipped with engines produced by different operating units of GM, its subsidiaries or suppliers to GM worldwide.

ASSEMBLY

Eldorado and its components are assembled and produced by different operating units of General Motors, its subsidiaries or suppliers to GM worldwide. We sometimes find it necessary to produce Eldorados with differently sourced components than originally scheduled. Since some options may be unavailable when your vehicle is assembled, we suggest that you verify that your vehicle includes the equipment you ordered, or if there are changes, that they are acceptable to you.

UPDATED SERVICE INFORMATION

Cadillac regularly sends its dealers useful service bulletins about Cadillac products. Cadillac monitors product performance in the field. We then prepare bulletins for servicing our products better. Now you can get these bulletins, too. Ask your dealer. To get ordering information, call toll-free 1-800-551-4123.

SAFETY AND SECURITY

The following are just some of the features found on the 2000 Eldorado:

OCCUPANT PROTECTION: Air bags, driver and front passenger • Adjustable front shoulder belt guides • Automatic door locks • Child seat tether anchors • Safety belt cinch capability for child seats • Intentional-set belt comfort feature **CRASH AVOIDANCE:** Anti-lock brakes, front and rear • Automatic daytime running lamps • Automatic exterior lamp control • Automatic windshield wipers (standard on select models) • Brake/transmission shift interlock • Cornering lamps • Disc brakes, front and rear, audible wear indicator • Door warning lights or reflectors • Fog lamps • Front/side/rear window defoggers • Halogen headlamps • Inside electrochromic rearview mirror • Maintenance-free battery • Outside power rearview mirrors, heated, electrochromic • Stability enhancement (available) • Steering wheel controls • Tinted glass windshield • Tires with built-in tread wear indicators • Traction control • Wiper-activated exterior lamps **SECURITY:** Anti-lockout feature • Audible theft-deterrent system • Battery rundown protection • Laser-etched VIN plate • PASS-Key theft-deterrent • Remote deck lid release • Remote hood release • Remote keyless entry • Stolen vehicle tracking/emergency communication (optional).

A NOTE ABOUT CHILD SAFETY

Children generally are safer if they are secured in a rear seat using appropriate child safety seats and restraints, which is why General Motors recommends that child safety seats be properly secured in a vehicle's rear seat. Never place a rear-facing infant restraint in the front seat of any vehicle equipped with an active air bag. See your Owner's Manual and child safety seat instructions for more information.

WARRANTY/CORROSION PROTECTION

The GM 4-year/50,000-mile Gold Key Bumper-to-Bumper limited warranty covers repairs for any new Eldorado, including labor and parts, to correct any defects in material or workmanship occurring during the warranty period. The complete vehicle will be covered for 4 years or 50,000 miles, whichever comes first, except adjustments and normal maintenance items. Plus free towing and a portfolio of other services. There is no deductible on any Eldorado warranty. See your Eldorado dealer for terms of these limited warranties. Eldorados are designed and built to resist corrosion. All body sheet metal components are warranted against rust-through corrosion for 6 years or 100,000 miles. There is no deductible for rust-through repairs. Application of additional rust-inhibiting materials is not required under the corrosion coverage and none is recommended.

Cadillac, the Cadillac emblem, Cadillac Roadside Service, Eldorado, General Motors, GM, the GM emblem, The GM Card, GM Protection Plan, Magnuson, Northstar, OnStar, Solar-Ray, StabiliTrak and Twilight Sentinel are registered trademarks and Rainsense is a trademark of the General Motors Corporation. Cadillac Owner Privileges is a service mark of the General Motors Corporation. PASS-Key and TheftLock are registered trademarks of Delphi Technologies, Inc. GMAC and SmartLease are registered trademarks of the General Motors Acceptance Corporation.

Litho in U.S.A. 8/99 ©1999 GM Corp. All Rights Reserved. Always use safety belts and proper child restraints, even with air bags. Children are safer when properly secured in a rear seat. See the Owner's Manual for more safety information.



ELDORADO COLOR GUIDE

EXTERIOR COLORS



12 Sterling



41 Sable Black



54 Cashmere



86 Crimson Pearl*



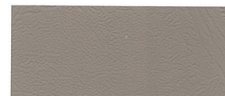
91 Polo Green



93 White Diamond*

*Available at extra charge.

LEATHER INTERIORS



HARRIET FAREN

FREDERICK CHEVROLET - CADILLAC - OLDSMOBILE - GEO - TOYOTA
1505 Quentin Road, Lebanon, PA 17042

Residence
717/272-8118



717/274-1461
800/222-5523



This familiar coat of arms symbolizes the status and courage of the French noble Le Sieur Antoine de la Mothe Cadillac, founder of Detroit in 1701. Since its adoption by Cadillac Motor Car Company in 1902, the crest has evolved to reflect the advances in technology and design that stand as hallmarks of the Cadillac Division. With the onset of this new millennium, there comes a new vision for Cadillac, and hence a new crest.

IMPORTANT WORDS ABOUT THIS CATALOG

We have tried to make this catalog comprehensive and factual. We must reserve the right, however, to make changes at any time, without notice, in the information contained in this catalog. Since some information may have been updated since the time of printing, please check with your Cadillac dealer for complete details.

Cadillac reserves the right to lengthen or shorten the model year for any product for any reason, or to start and end model years at different times.

ENGINES

Eldorados are equipped with engines produced by different operating units of GM, its subsidiaries or suppliers to GM worldwide.

ASSEMBLY

Eldorado and its components are assembled and produced by different operating units of General Motors, its subsidiaries or suppliers to GM worldwide. We sometimes find it necessary to produce Eldorados with differently sourced components than originally scheduled. Since some options may be unavailable when your vehicle is assembled, we suggest that you verify that your vehicle includes the equipment you ordered, or if there are changes, that they are acceptable to you.

UPDATED SERVICE INFORMATION

Cadillac regularly sends its dealers useful service bulletins about Cadillac products. Cadillac monitors product performance in the field. We then prepare bulletins for servicing our products better. Now you can get these bulletins, too. Ask your dealer. To get ordering information, call toll-free 1-800-551-4123.

SAFETY AND SECURITY

The following are just some of the features found on the 2000 Eldorado:

OCCUPANT PROTECTION: Air bags, driver and front passenger • Adjustable front shoulder belt guides • Automatic door locks • Child seat tether anchors • Safety belt cinch capability for child seats • Intentional-set belt comfort feature **CRASH AVOIDANCE:** Anti-lock brakes, front and rear • Automatic daytime running lamps • Automatic exterior lamp control • Automatic windshield wipers (standard on select models) • Brake/transmission shift interlock • Cornering lamps • Disc brakes, front and rear, audible wear indicator • Door warning lights or reflectors • Fog lamps • Front/side/rear window defoggers • Halogen headlamps • Inside electrochromic rearview mirror • Maintenance-free battery • Outside power rearview mirrors, heated, electrochromic • Stability enhancement (available) • Steering wheel controls • Tinted glass windshield • Tires with built-in tread wear indicators • Traction control • Wiper-activated exterior lamps **SECURITY:** Anti-lockout feature • Audible theft-deterrent system • Battery rundown protection • Laser-etched VIN plate • PASS-Key theft-deterrent • Remote deck lid release • Remote hood release • Remote keyless entry • Stolen vehicle tracking/emergency communication (optional).

A NOTE ABOUT CHILD SAFETY

Children generally are safer if they are secured in a rear seat using appropriate child safety seats and restraints, which is why General Motors recommends that child safety seats be properly secured in a vehicle's rear seat. Never place a rear-facing infant restraint in the front seat of any vehicle equipped with an active air bag. See your Owner's Manual and child safety seat instructions for more information.

WARRANTY/CORROSION PROTECTION

The GM 4-year/50,000-mile Gold Key Bumper-to-Bumper limited warranty covers repairs for any new Eldorado, including labor and parts, to correct any defects in material or workmanship occurring during the warranty period. The complete vehicle will be covered for 4 years or 50,000 miles, whichever comes first, except adjustments and normal maintenance items. Plus free towing and a portfolio of other services. There is no deductible on any Eldorado warranty. See your Eldorado dealer for terms of these limited warranties. Eldorados are designed and built to resist corrosion. All body sheet metal components are warranted against rust-through corrosion for 6 years or 100,000 miles. There is no deductible for rust-through repairs. Application of additional rust-inhibiting materials is not required under the corrosion coverage and none is recommended.

Cadillac, the Cadillac emblem, Cadillac Roadside Service, Eldorado, General Motors, GM, the GM emblem, The GM Card, GM Protection Plan, Magnasteer, Northstar, OnStar, Solar-Ray, StabiliTrak and Twilight Sentinel are registered trademarks and Rainsense is a trademark of the General Motors Corporation. Cadillac Owner Privileges is a service mark of the General Motors Corporation. PASS-Key and TheftLock are registered trademarks of Delphi Technologies, Inc. GMAC and SmartLease are registered trademarks of the General Motors Acceptance Corporation.

Litho in USA. ©1999 GM Corp. All Rights Reserved. Always use safety belts and proper child restraints, even with air bags. Children are safer when properly secured in a rear seat. See the Owner's Manual for more safety information.





HARRIET FAREN

FREDERICK CHEVROLET • CADILLAC • OLDSMOBILE • GEO • TOYOTA
1505 Quentin Road, Lebanon, PA 17042

Residence 717/272-8118		717/274-1461 800/222-5523
---------------------------	---	------------------------------



This familiar coat of arms symbolizes the status and courage of the French noble Le Sieur Antoine de la Mothe Cadillac, founder of Detroit in 1701. Since its adoption by Cadillac Motor Car Company in 1902, the crest has evolved to reflect the advances in technology and design that stand as hallmarks of the Cadillac Division. With the onset of this new millennium, there comes a new vision for Cadillac, and hence a new crest.

ELDORADO COLOR GUIDE

EXTERIOR COLORS



12 Sterling



41 Sable Black



54 Cashmere



86 Crimson Pearl*



91 Polo Green



93 White Diamond*

*Available at extra charge.

LEATHER INTERIORS



15 Neutral Shale



19 Black



50 Oatmeal



92 Pewter

Note: Standard leather seating areas include Nuance leather inserts on the Eldorado ESC and perforated Nuance leather inserts on the Eldorado ETC.

cadillac.com



cadillac.com

ELDORADO 2000

