

C A T E R A



2001

CADILLAC'S NORTHSTAR LMP RACE CAR HAS TAKEN THE FUSION OF DESIGN AND TECH-

NOLOGY IN A WHOLE NEW DIRECTION. IN ITS FIRST SEASON, CADILLAC DEVELOPED A

WORLD-CLASS COMPETITOR THAT PROVED ITS METTLE IN THE WORLD'S MOST FAMOUS

## THE FUSION OF DESIGN & TECHNOLOGY.

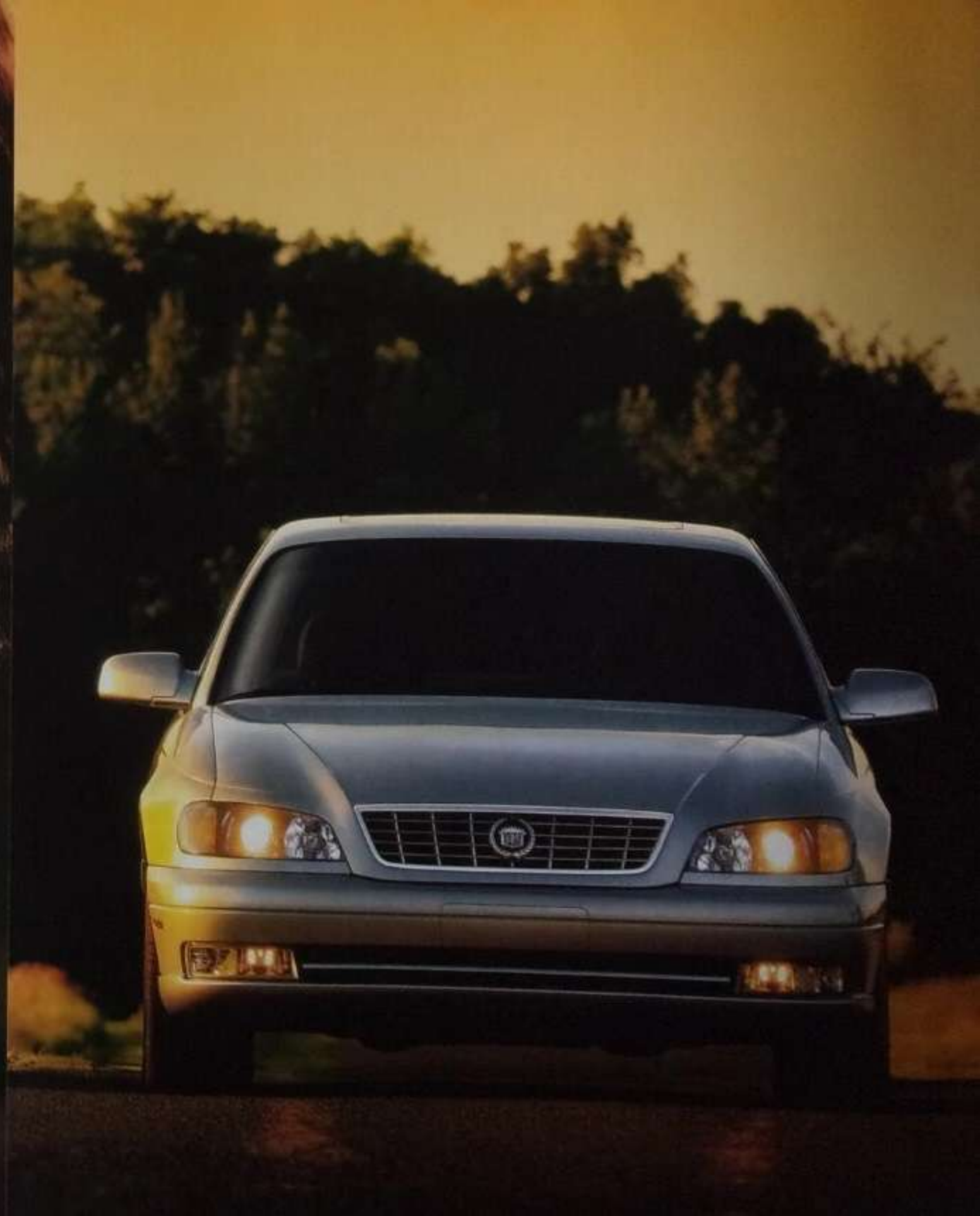
ENDURANCE EVENT. SURPRISING? NOT WITH THE POWER OF &. AT CADILLAC, THERE'S

NO LIMIT TO THE APPLICATION OF DESIGN AND TECHNOLOGY. IN FACT, CATERA'S

EXCELLENT HANDLING WAS HONED ON GERMANY'S LEGENDARY NURBURGRING RACE

TRACK. BUT CATERA IS MORE THAN THAT. IT'S DRIVING CUSTOMIZED TO YOU. THANKS TO

THE POWER OF &.





TECHNICALLY, IT'S CATERA SPORT.  
ESSENTIALLY, IT'S A RUSH TO DRIVE.



Style is nothing without substance, and Catera proves the point. Its 200-hp DOHC V6, performance-rated tires, autobahn-proven brakes, selective transmission, and OnStar may not be visually riveting, but each is a masterpiece of engineering. The best part: It's the foundation for an exciting new world of customized driving in Catera Sport.



**WE'VE BRIDGED THE GAP  
BETWEEN ART & SCIENCE.**





**WE HAVE SOME DEEP-SEATED IDEAS  
ABOUT YOUR MUSCLES—AND YOUR MUSIC.**

The only strain in driving Catera Sport should be the interval of time between your opportunities behind the wheel. That's why you'll find eight-way power adjustable driver and front-passenger seats. At the touch of a button, an amazing memory system recalls your custom driver-seat settings, then the seat and outside rearview mirrors automatically reposition and customize themselves for you. And, if you'd ever allow anyone else to drive your Catera, there are three buttons and three possible seat and mirror settings for an even greater range of customization. For music, you can set an AM/FM stereo cassette system to your listening taste.

AN AVAILABLE BOSE MUSIC SYSTEM FEATURES AM/FM RADIO WITH DIGITAL SIGNAL PROCESSING,

CASSETTE, SINGLE-SLOT CD, AUTOMATIC VOLUME CONTROL,  
AND AN EIGHT-SPEAKER SYSTEM THAT SOUNDS LIKE 20.









ONSTAR ONBOARD SERVICES:  
EXECUTIVE ASSISTANCE ANYTIME.



There's one voice with over five million service listings including hotels, restaurants, and ATMs. And it belongs to a real, live OnStar Advisor. There's a second voice with access to a customized database specified by you. It belongs to OnStar's new Virtual Advisor. Through the available Virtual Advisor, your voice commands can have your e-mail read to you while you drive, or request the latest performance of your stock portfolio. OnStar also offers Personal Calling. This available service turns OnStar into a hands-free, voice-activated cell phone.\*



ONSTAR IS AS CLOSE AS THE ONSTAR BUTTON ON DEVILLE'S REARVIEW MIRROR. ONE TOUCH PUTS YOU IN IMMEDIATE VOICE CONTACT WITH A REAL OR "VIRTUAL" ADVISOR.

WHETHER YOU'RE IN TRAFFIC, OR "IN COUNTRY," ONSTAR'S AVAILABLE VIRTUAL ADVISOR SYSTEM CAN ACCESS LOCAL WEATHER, TRAFFIC, OR NEWS AND CHANNEL IT RIGHT TO YOUR VEHICLE THROUGH VOICE-ACTIVATED PROMPTS.

WHAT'S MORE, YOU CAN PERSONALIZE THE INFORMATION BY PROGRAMMING VIRTUAL ADVISOR THROUGH ANY ONLINE COMPUTER. LEARN MORE AT CADILLAC.COM.

\*One-year OnStar Premium Service agreement included as standard on Caters. Existing OnStar service agreement required for Personal Calling; additional usage charges apply. Personal Calling required for Virtual Advisor service. Interim 2001 Model Year availability in select markets for Personal Calling and Virtual Advisor. Call 1-800-ONSTAR-7 for system limitations and details.



FOR EMERGENCY SERVICE,  
JUST PUSH THE RED BUTTON.



THE CLOSEST ATM FAST?  
WE'LL DIRECT YOU.



DINNER OR HOTEL  
RESERVATIONS. WE CAN  
MAKE THEM HAPPEN.



LOCKED OUT?  
WE'LL UNLOCK VIA A  
CELLULAR SIGNAL.



NEED ROADSIDE ASSISTANCE?  
WE DIRECT AID TO YOU FAST.



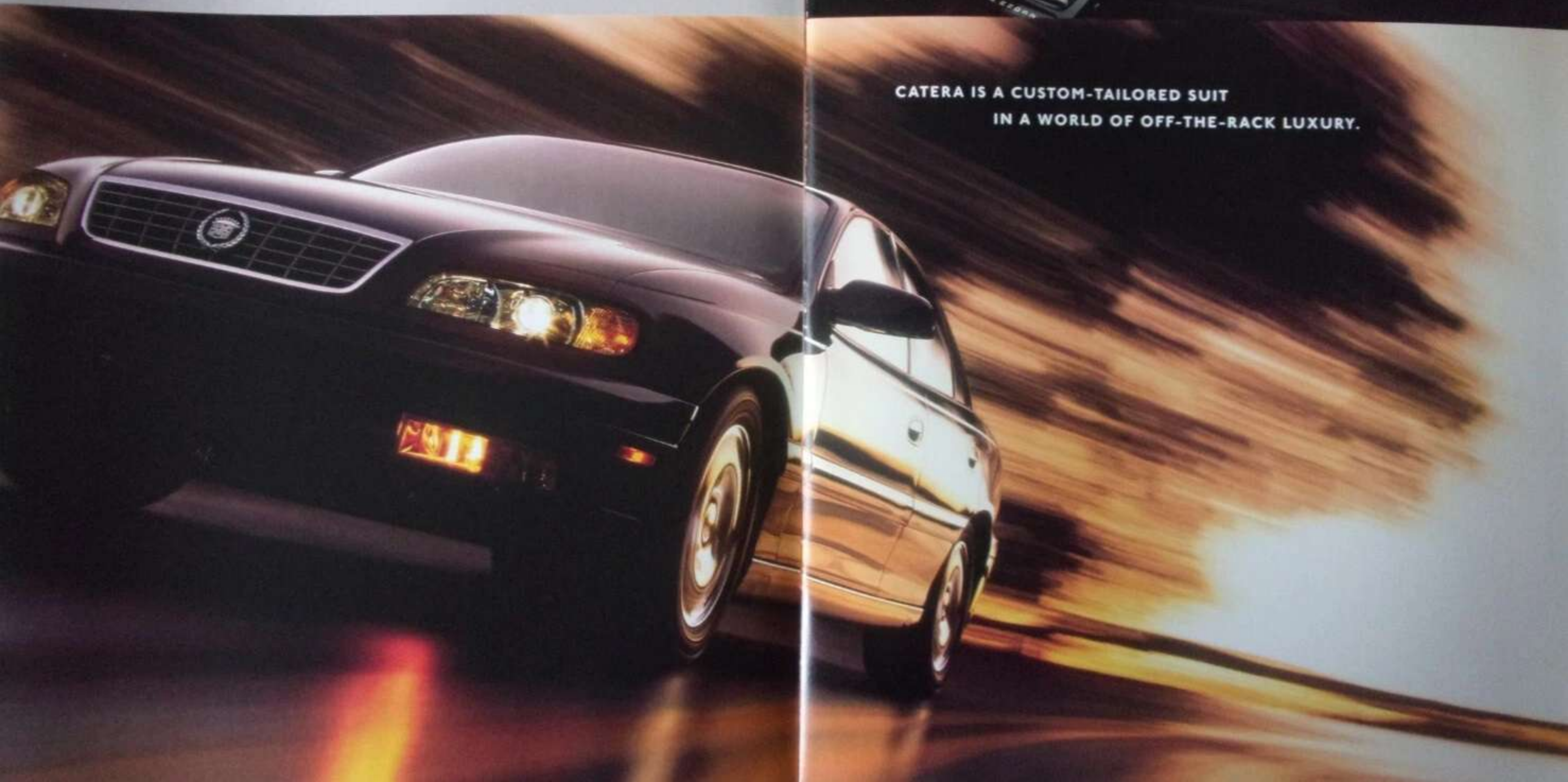
SEND FLOWERS FROM  
THE ROAD.



Project an image of confidence with a 200-hp V6 that tunes and retunes its intake system to enhance performance as you drive. Manage stress effectively with the personalized comfort of an eight-way power adjustable driver's seat. Make the transmission shift to your liking by selecting one of three custom modes. It's all in there. You should be, too.



**CATERA IS A CUSTOM-TAILORED SUIT  
IN A WORLD OF OFF-THE-RACK LUXURY.**







Once you've relished the scent and feel of these leather seating areas, you can begin to appreciate their comfort and versatility. Front-seat "hip points" are optimized for relaxed driving. These seats also have a full range of comfort adjustments, including manual lumbar support. In back, the center armrest folds down for cargo-accommodating trunk/cabin pass-through. Heated front and rear outboard seats are also available.

LEATHER BY THE YARD.  
AMENITIES BY THE SCORE.



WHAT YOU GET OUT OF CATERA  
IS THE RESULT OF WHAT WE'VE PUT IN.

We've filled Catera with innovative thinking and technology so you can keep your mind on the fun of driving. Trunk space is just one example. There's 14.5 cubic feet of it back there. With the rear seats folded, there's enough room to swallow a mountain bike. Up front, don't be shy about tucking your granola bar into the glove box, because it's air conditioned. In fact, all the air passing through Catera's vent system is triple-filtered to help remove dust and pollen. Breathe deeply.

CATERA'S OPTIONAL REAR SUNSHADE CUTS THE HEAT LOAD  
WITHOUT HAMPERING VISIBILITY.





WE'VE CRANKED UP SOME ADVANCED ENGINEERING  
TO COMPRESS TIME AND SPACE.

In principle, it's easy to make horsepower. Just compress a lot of fuel and air, then burn it. The hard part is accomplishing that efficiently. But Catera does it effortlessly with a specially designed intake system. Inside its twin tubes, a trio of valves open and close to refine the distance air travels to reach each combustion chamber. At lower speeds, air takes one path. At higher speeds, a different one. Each path is tuned to pack in more air at just the right time. And more air equals more power. It's an engine that grows muscles when you need them. Fast.

TUNE-UPS FOR CATERA'S 3.0L V6 CAN SPAN UP TO 100,000 MILES, THANKS TO ADVANCED TECHNOLOGY LIKE SPARK PLUGS WITH THREE ELECTRODES, ENSURING EFFICIENT IGNITION AND COMBUSTION OF FUEL. A HIGH-EFFICIENCY OIL COOLER ALSO HELPS ACHIEVE EXTENDED SERVICE INTERVALS\*.



\*Maintenance needs vary with different uses and driving conditions. See the Owner's Manual for more information.

**P O W E R**  
Catera's 3.0L V6 engine combines the advantages of high compression with 24 valves to create 200 hp.



**WE'VE SUSPENDED REALITY  
TO MAKE CATERA HANDLE LIKE A DREAM.**

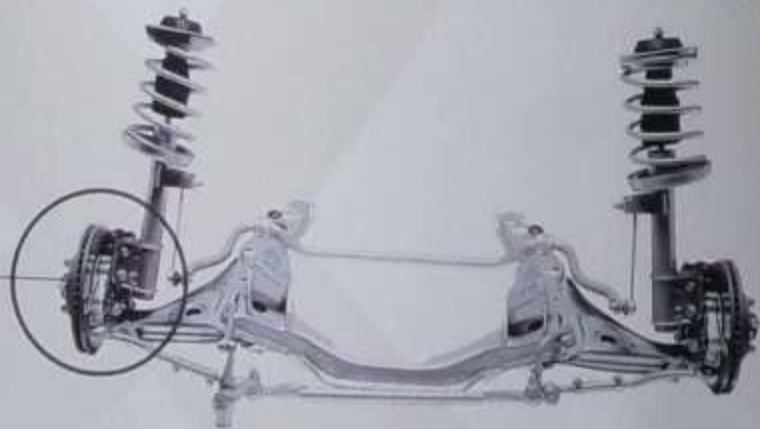
Mass, speed, and inertia are definitely real. And every time you drive, they must be precisely managed or counteracted. That's why Catera has rear-wheel drive and four-wheel independent suspension. It's the classic layout for classic performance and handling. But Catera goes beyond all that with four-wheel disc brakes and ABS, all-speed traction control, quick-ratio 14.8:1 speed-sensitive steering, automatic level control, and performance tires.

CATERA SPORT FEATURES SPECIFIC ZJI SUSPENSION FOR TAUT HANDLING AND RESPONSE.

THE ZJI SETUP INCLUDES SPECIAL BUSHINGS, STIFFER SPRINGS, PLUS STRUTS AND SHOCKS WITH SPECIFIC VALVING FOR INCREASED COMPRESSION AND REBOUND CONTROL.

**Vented brake rotors**

Catera's autobahn-size front brake rotors are vented to help dissipate heat. And a cooler rotor means less chance of fade.





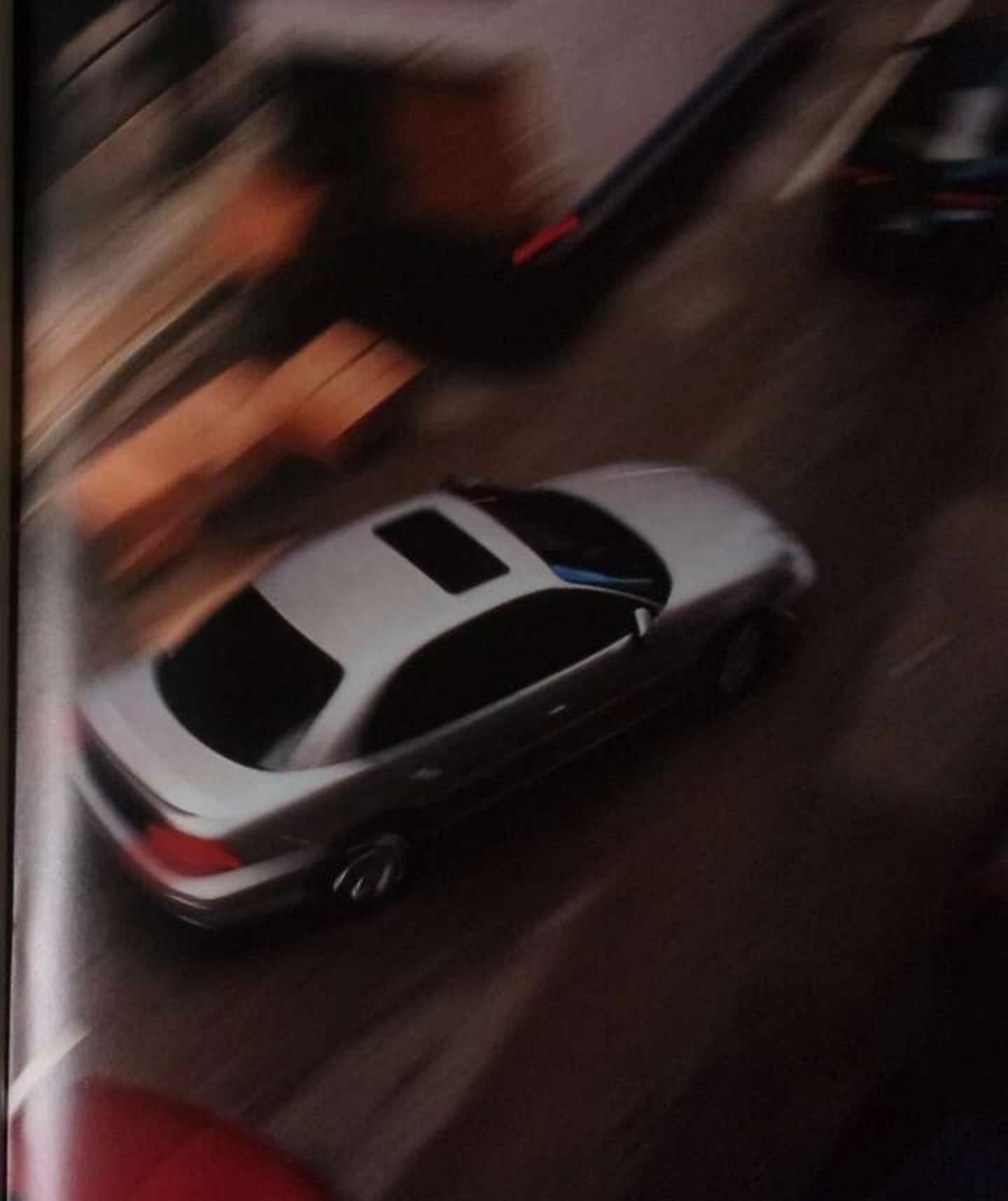
IF SAFETY DOESN'T SELL YOU ON CATERA,  
IT JUST MIGHT CLOSE THE DEAL.

Safety comes in two varieties. Active safety helps you avoid trouble. And passive safety helps you survive it. Catera does both. A prime example of active safety is Catera Sport's projector-beam HID headlamps. They concentrate light and focus the beam more precisely to help reveal what's ahead. Catera also has four-wheel ABS and all-speed traction control to help you avoid trouble. Internally, Catera has a strong passenger compartment safety cage and steel side beams in all four doors. For added safety, you also get driver and front passenger frontal and side-impact air bags\*.

CATERA'S BODY HAS BEEN DESIGNED TO HELP PROTECT OCCUPANTS IN A VARIETY OF CRASH TYPES. WHAT'S MORE, CATERA'S ENTIRE FRONT SUBFRAME IS DESIGNED TO HELP ABSORB FRONTAL COLLISION FORCES.



\*A NOTE ABOUT CHILD SAFETY: ALWAYS USE SAFETY BELTS AND PROPER CHILD RESTRAINTS, EVEN IN VEHICLES WITH AIR BAGS. CHILDREN ARE SAFER WHEN PROPERLY SECURED IN A REAR SEAT. NEVER PLACE A REAR-FACING INFANT RESTRAINT IN THE FRONT SEAT OF ANY VEHICLE EQUIPPED WITH AN ACTIVE AIR BAG. SEE THE OWNER'S MANUAL AND CHILD SAFETY SEAT INSTRUCTIONS FOR MORE SAFETY INFORMATION.







# STANDARD FEATURES & AVAILABLE EQUIPMENT

S (Standard) A (Available) - (Not Available)

## INTERIOR FEATURES & APPLIANCES

	Color	Color
<b>AIR BAGS*</b>		
Driver and front passenger frontal impact	S	S
Driver and front passenger side-impact	S	S

## AUDIO SYSTEMS

AM/FM stereo, cassette, and TheftLock	S	S
Base premium music system with AM/FM stereo, cassette, single-disc CD player, automatic volume compensation technology, weatherband reception, Radio Data System with emergency broadcast reception, six-channel custom equalization, TheftLock, and eight speakers	A	A

## CLIMATE CONTROL, ELECTRONIC

	S	S
<b>CONSOLE</b>		
Front center console with divider, storage, handrest, dual cupholders, front and rear, and auxiliary power outlet	S	S

## DOOR LOCKS

Power automatic programmable locks with central locking	S	S
Child safety locks on rear doors	S	S

## FLOOR MATS

Carpets, front and rear	S	S
-------------------------	---	---

## GARAGE DOOR OPENER

Three-channel programmable	A**	S
----------------------------	-----	---

## INSTRUMENT PANEL

Analog gauges, digital clock, and low fuel and windshield washer fluid-level indicators	S	S
---	---	---

## LIGHTING

Courtesy map-reading, entry	S	S
-----------------------------	---	---

## MEMORY PACKAGE

Driver seat, exterior and interior mirrors that adjust for up to three drivers	A**	S
--	-----	---

## MIRRORS

Electrochromic, automatic dimming, inside rearview mirror with electronic compass	S	S
Illuminated rear vanity mirrors	S	S

## ONSTAR COMMUNICATION SYSTEM

Premium Concierge Services that can direct callers		
--	--	--

to restaurants, ATMs, and businesses in over 250 categories. OnStar advisors can help make reservations, plan outings, provide route support, and much more.

Safety and Security Services include air bag deployment notification, remote door unlock, stolen vehicle tracking, remote diagnostics, and MED-NET Personal Calling with hands-free cellular call activation. Virtual Advisor delivers the ability to receive e-mail and select news, sports information, stock quotes, and weather reports.

## REMOTE KEYLESS ENTRY

## SEATING

Five-passenger seating trimmed with leather seating areas, bucket seating in front with split-fold seating in rear.

## STEERING WHEEL

Leather-trimmed, Tilt-Wheel adjustable, audio system controls.

## SUNSHADE

Power rear.

## THEFT-DETERRENT SYSTEM

## TRUNK

Carpets with convenience mat, plus power and emergency manual trunk lid release.

## WINDOWS

Heat-reflecting front windshield, Solar-Ray tinted glass, Power window controls with express up and down and child pinch-guard system.

## EXTERIOR FEATURES

### FOG LAMPS

	S	S
--	---	---

### LIGHTING SYSTEMS

Daytime running lamps with Twilight Sentinel automatic operation, wiper-activated automatic-on feature, and flush-to-pass feature.

### MIRRORS

Outside rearview mirrors, powered and heated.

### SPOILER, REAR

	-	S
--	---	---

### SUNROOF

Glass with sunshade, pinch-guard, and express-open/close feature.

## POWERTRAIN

3.0 liter V6 with 24 valves, double overhead camshaft, 250 horsepower at 6,000 rpm, and 192 ft.-lbs. torque at 2,600 rpm.

4-speed automatic transmission with overdrive and electronic shift control, sport mode, and winter driving mode.

Rear-wheel drive with all-speed traction control.

## CHASSIS & SUSPENSION

### BRAKES

Four-wheel power disc brakes with electronic anti-lock brake controls.

### SUSPENSION

Fully independent with electronic level control, MacPherson front strut, multilink rear, Sport calibration for springs and shock absorbers.

### STEERING

Speed-sensitive rack-and-pinion steering with variable power assist.

### WHEELS AND TIRES

17" cast aluminum five-spoke wheels with P225/35HR17 all-season steel-belted radial tires.

## COLORS

### EXTERIOR

Ivory Platinum, Ebony		
Sapphire, Rainforest, Sand, Onyxberry, Sage	A	A

### INTERIOR, LEATHER

Neutral, Charcoal		
Bone	A	A

## DIMENSIONS & CAPACITIES

### SEATING

Five passengers.

Front 38.7" (982 mm).

Rear 38.4" (975 mm).

Front 42.2" (1,071 mm).

Rear 37.8" (959 mm).

Front 34.9" (887 mm).

Rear 35.2" (894 mm).

Front 34.4" (875 mm).

Rear 35.9" (910 mm).

3,770 lbs.

14.5 cubic feet.

193.3"

70.3"

58.4"

1,000 lbs.

## IMPORTANT WORDS ABOUT THE CATALOG

We have tried to make this catalog comprehensive and factual. We must reserve the right, however, to make changes at any time, without notice, in price, notes, materials, equipment specifications, models, and availability. Since some information may have been updated since the time of printing, please check with your Cadillac dealer for complete details. Any variation in colors shown are due to reproduction variation in the printing process. Some photos may include optional equipment.

Cadillac reserves the right to lengthen or shorten the model year for any product for any reason, or to start and end model years at different times.

### ENGINES

Cadillac are equipped with engines produced by different operating units of General Motors, its subsidiaries, or suppliers to General Motors worldwide.

### ASSEMBLY

Cadillac and its components are assembled and produced by different operating units of General Motors, its subsidiaries, or suppliers to General Motors worldwide. We sometimes find it necessary to produce Cadillac with different or differently sourced components than originally scheduled. Since some options may be unavailable when your vehicle is assembled, we suggest that you verify that your vehicle includes the equipment you ordered, or if there are changes, that they are acceptable to you.

### UPDATED SERVICE INFORMATION

Cadillac regularly sends its dealers useful service bulletins about Cadillac products. Cadillac monitors product performance in the field. We then prepare bulletins for servicing our product better. Now you can get these bulletins, too. Ask your dealer. To get ordering information, call toll-free 1-800-351-4321.

### SAFETY AND SECURITY

The following are just some of the features on the 1991 Cadillac. **OCCUPANT PROTECTION:** Adjustable front shoulder belt guides • Adjustable rear shoulder belt guides (outboard) • Air bags, driver and front passenger • Air bags, side • Automatic door locks • Safety belt open for child seats • Child safety door locks • Integral child restraints • Center rear lap and shoulder belt • Power window lockout • Safety belt energy-management force limiter (rear seat) • Safety belt pre-tensioner (front outboard) **SECURITY:** Anti-theft features • Audible theft-deterrent system • Battery rundown protection • Laser-etched VIN plate • PASS Key anti-theft system • Remote door release • Remote fuel door release • Remote keyless entry • OnStar features including stolen vehicle tracking/emergency communication **CRASH AVOIDANCE:** Anti-lock brakes, front and rear • Brake transmission shift interlock • Disc brakes, front and rear • Audible brake indicator • Maintenance-free battery • Steering wheel controls • Tires with built-in tread wear indicators • Traction control • Automatic

daytime running lamps • Cornering lamps • Disc warning lights or reflectors • Fog lamps • Halogen headlamps • Inside electrochromic mirrorview mirror • Outside rearview mirrors • Rear window defogger • Side window defogger • Front- and rear glass windshield • Automatic exterior lamp control • Wash-activated exterior lamps.

### WARRANTY

The General Motors four-year/50,000-mile Gold Key Bumper-to-Bumper Limited Warranty covers repairs for any new Cadillac, including labor and parts, to correct any defects in material or workmanship occurring during the warranty period. The complete vehicle will be covered for four years or 50,000 miles, whichever comes first, except adjustments and normal maintenance items. Plus free towing and a portfolio of other services. There is no deductible on any Cadillac warranty. See your Cadillac dealer for terms of these limited warranties.

### CORROSION PROTECTION

Cadillac are designed and built to resist corrosion. All body sheet metal components are waterpainted against rust-through corrosion for six years or 100,000 miles, whichever comes first. There is no deductible for rust-through repairs. Application of additional rust-inhibiting material is not required under the corrosion coverage and none is recommended.

### THEFT DETERRENCE

Every Cadillac includes a visible vehicle identification number (VIN) and a VIN plate, theft-deterrence steering column lock, theft-deterrence key locking system, and an ignition key removal audible reminder.

### A NOTE ABOUT CHILD SAFETY

Always use safety belts and proper child restraints, even in vehicles with air bags. Children are safer when properly secured in a rear seat. Never place a rear-facing infant restraint in the front seat of any vehicle equipped with an active air bag. See your Owner's Manual and child safety seat instructions for more information.

EXTERA, CADILLAC, CADILLAC ROADSIDE SERVICE, GENERAL MOTORS, the GM emblem, GM PROTECTION PLAN, the GM CARD, DENOM, DENOMON, and TWENTY SEVENTH are registered trademarks and the CADILLAC badge, the POWER OF 8, and THE FUSION OF DESIGN & TECHNOLOGY are trademarks of the General Motors Corporation. CADILLAC ONYX PRIVILEGES is a service mark of the General Motors Corporation. THE LOCK is a registered trademark of Bosch Technologies Inc. SPAC and SMARTLEASE are registered trademarks of the General Motors Acquisition Corporation. ORBITAL, the ORBITAL emblem and the ORBITAL logo are registered trademarks of Orbital Corporation.

Copyright © 1990 GM Corp. All rights reserved.

## EXTERIOR



33 IVORY



41 RAINFOREST



57 PLATINUM



59 SAPPHIRE



68 SAND



75 CRANBERRY



80 EBONY



97 SAGE

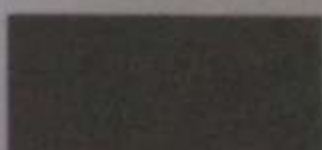
## INTERIOR



805 NEUTRAL LEATHER\*



803 CHARCOAL LEATHER\*\*



805 STONE LEATHER\*\*

## CATERA COLOR & TRIM GUIDE

\*Note: Catera Sport available only with exterior colors 33, 57, and 80, and interior color 805.

\* 805 interior color is not available with 57 exterior color.  
\*\* 803 exterior color is not available with 68 exterior color.



