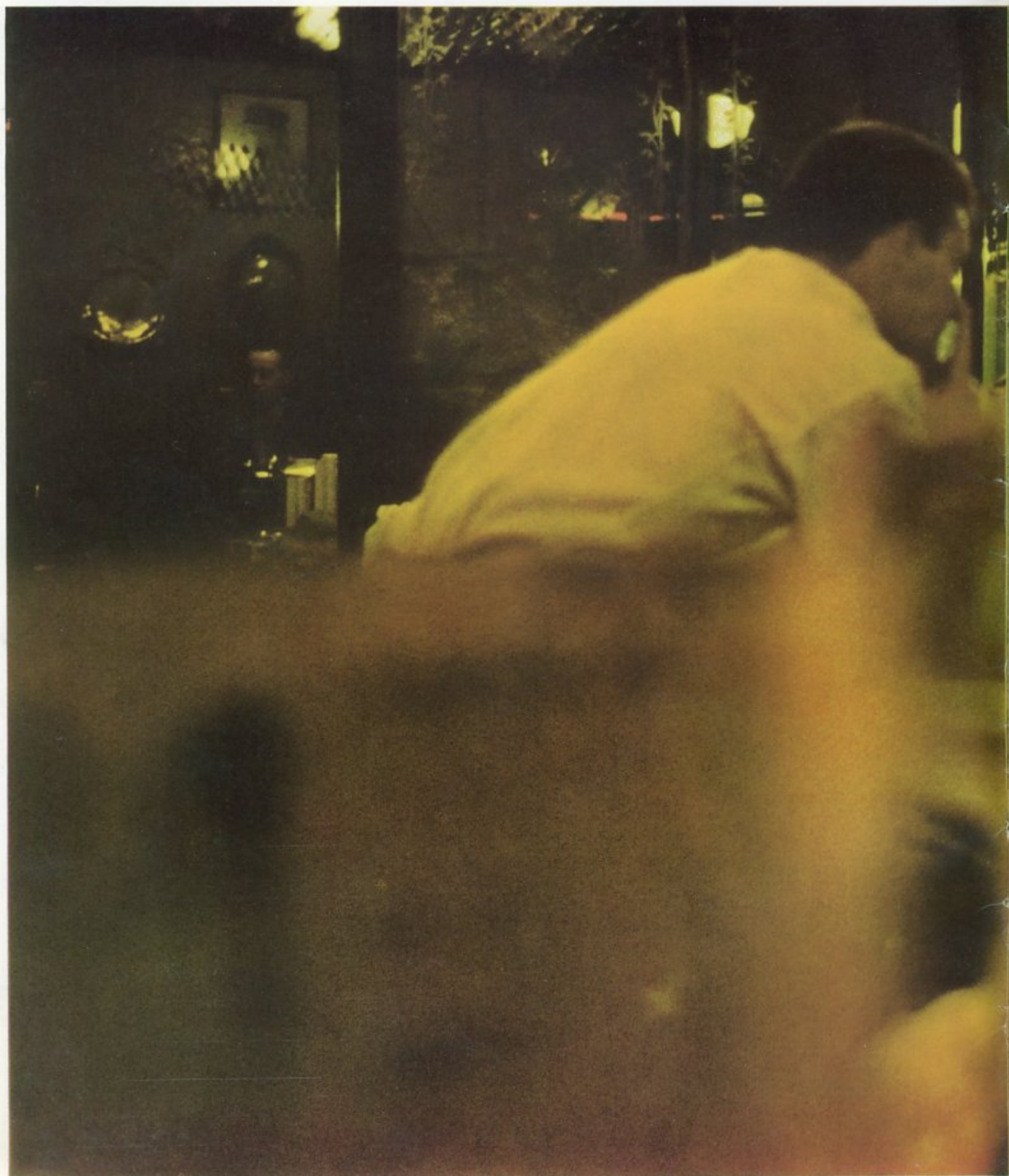


Do you like being alone?



ROCKY COAST NEAR ST. MALO



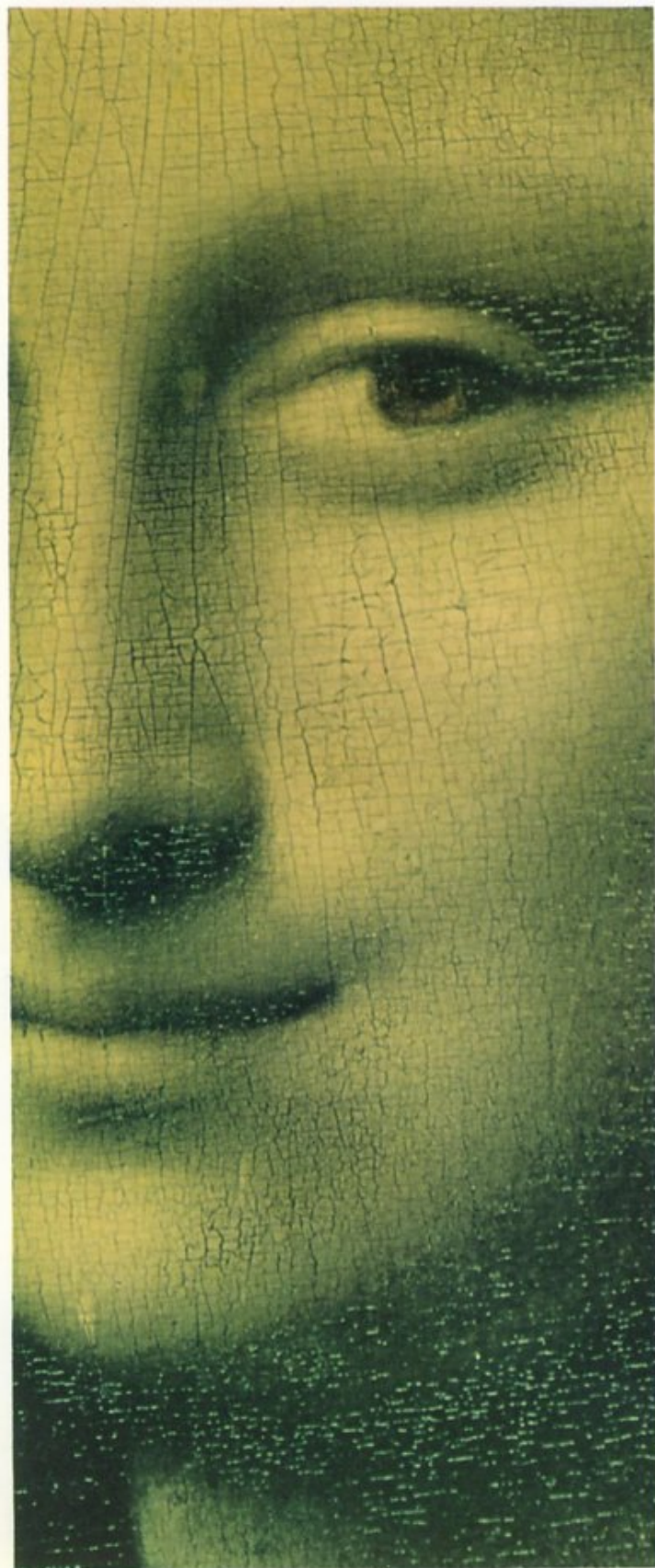


Or with others?

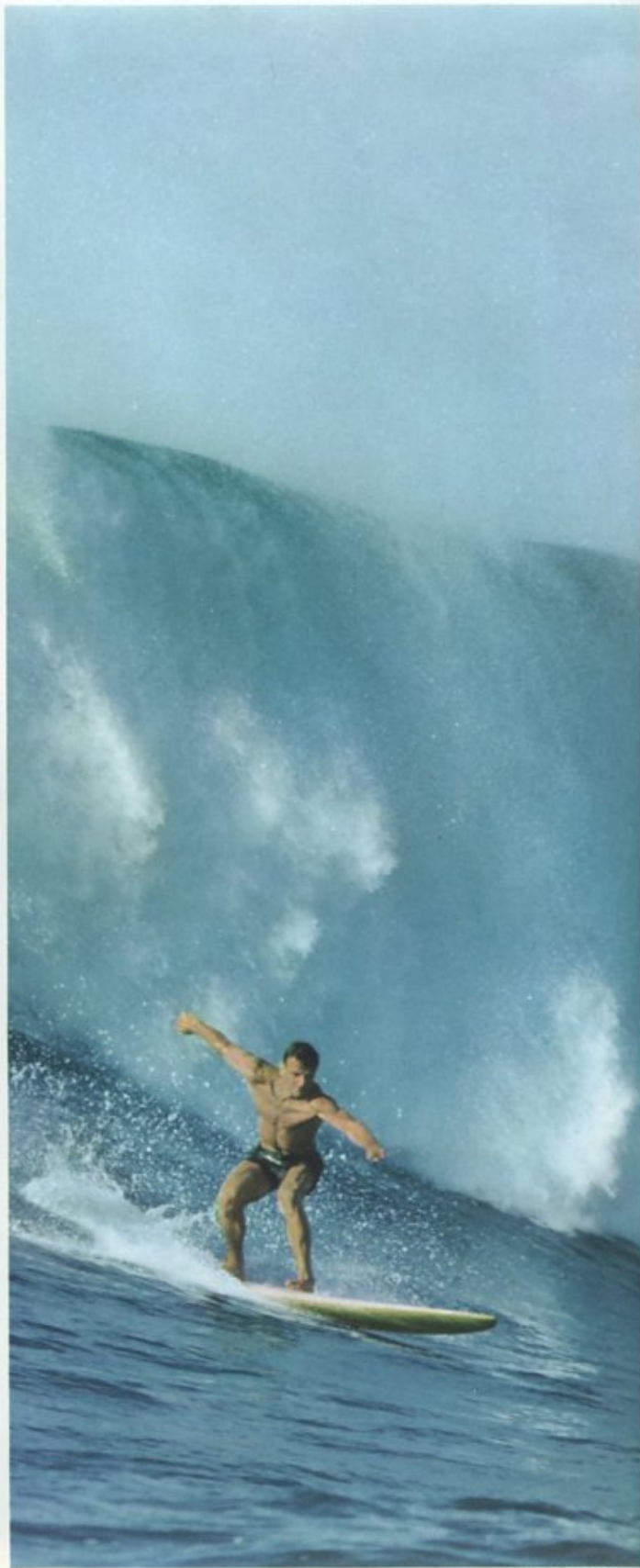




Like collecting paintings?



Or surf riding?



SURF RIDING OFF HAWAII



Or driving with elan?



ON THE NURBURGRING

If you like the special things in life -

we have something special for you:







# The Volkswagen 1200 Karmann Ghia



TREE LINED ROAD NEAR ST. MICHEL

as a convertible





and as a coupé.





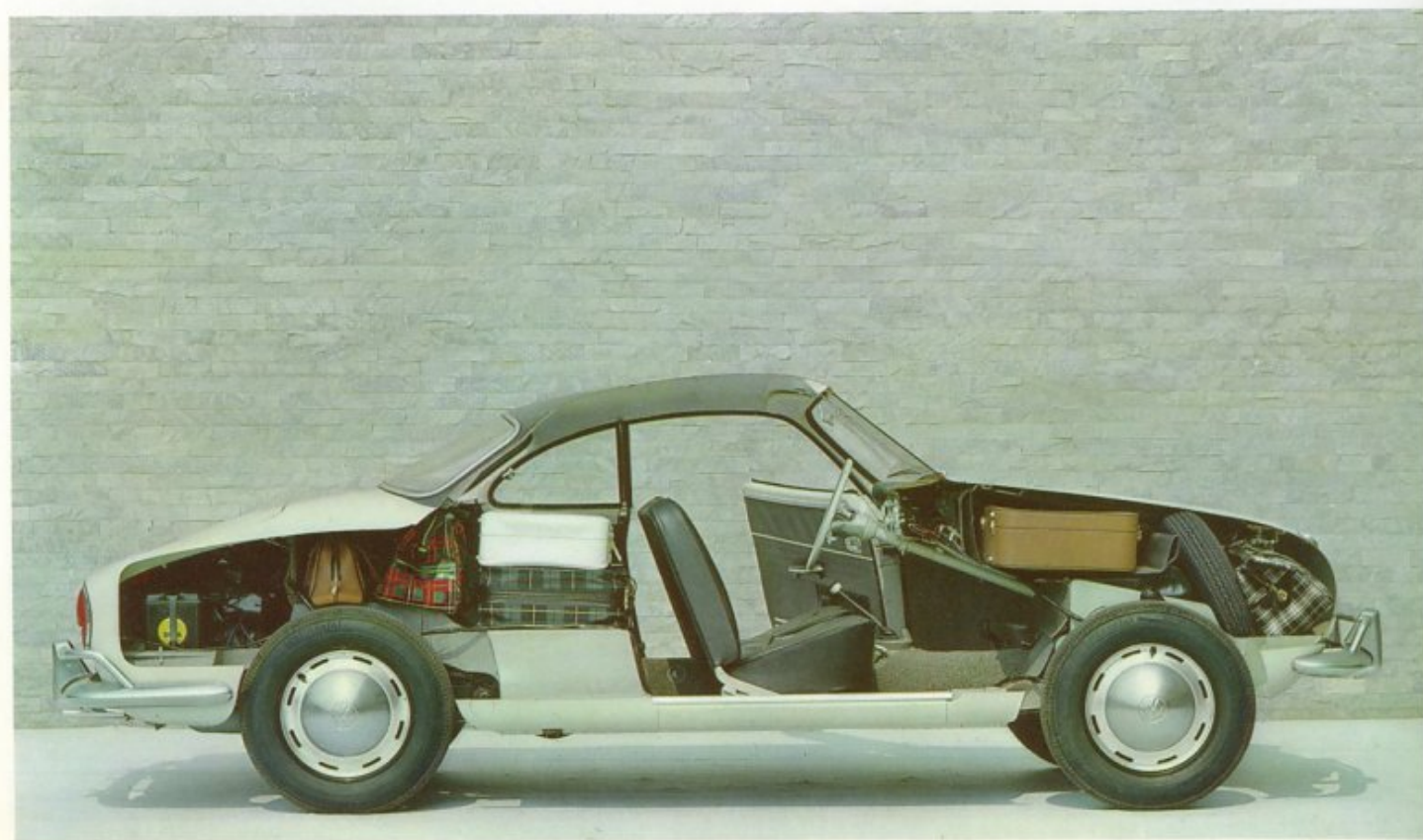
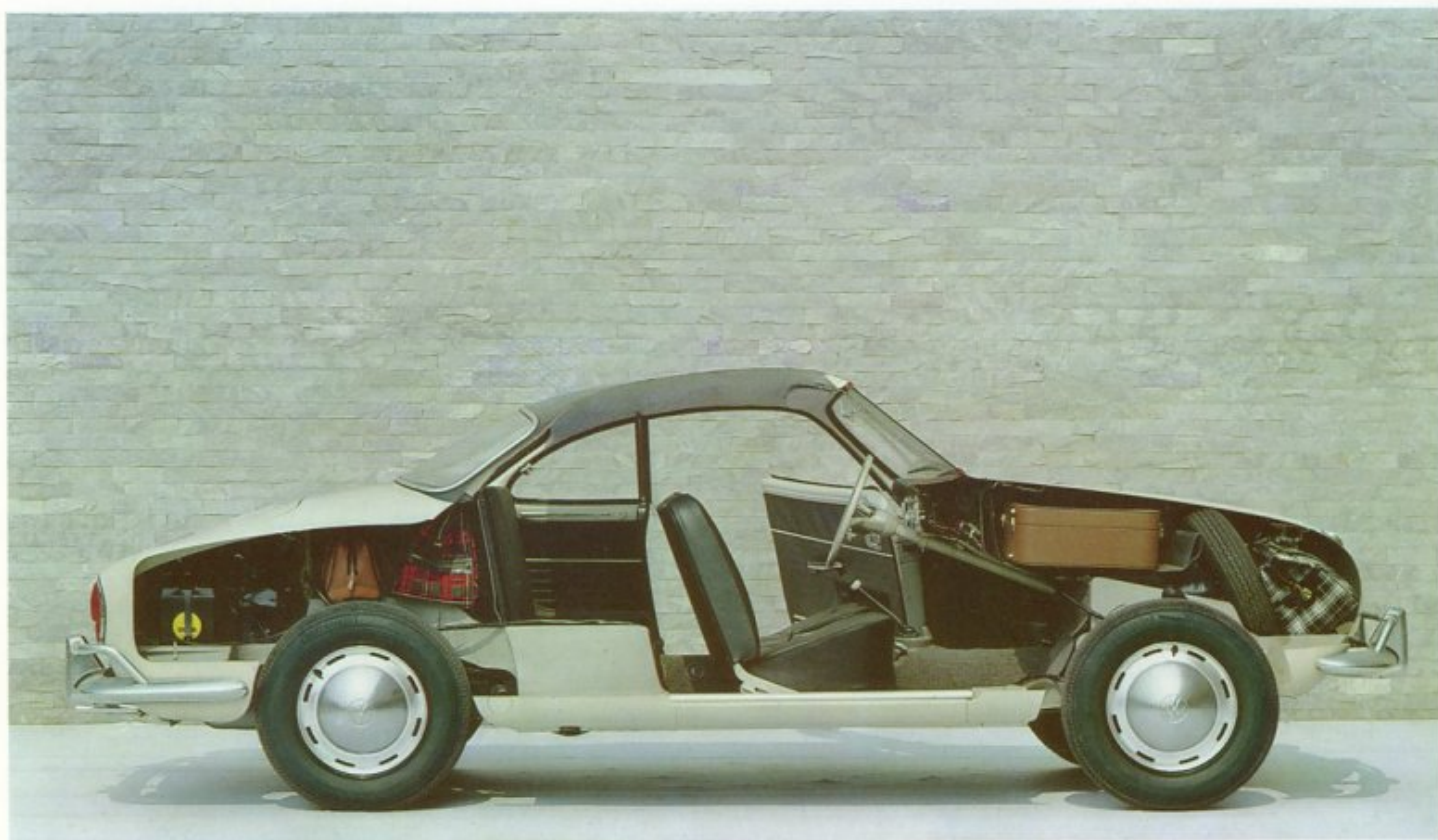


Both inside and out it's an elegant car





with lots of room for luggage.





That's the essential thing about the Volkswagen 1200 Karmann Ghia.

It's not only an elegant and impressively luxurious car. It is also practical.

It's practical because it is unusually roomy for a two-seater.

Behind the individually adjustable front seats which are each 23 ½ inches wide there is an upholstered rear bench seat. (Seats two children or a third adult passenger.)

The VW 1200 Karmann Ghia is also practical because there is a lot of room for luggage.

There is a luggage compartment (3.7 cu. ft) under the front hood.

And another one (6.3 cu. ft) behind the rear bench seat.

On the long journey with only two in the car there is even more room for luggage with the rear bench seat backrest folded down. (An extra 7.1 cu. ft.)

Moreover the VW 1200 Karmann Ghia is a sporty car.

Easy to change gear because it has a fully synchronized gearbox. Easy to drive because the steering responds to the lightest touch. (A steering damper makes sure there is no jolts.)

The 41.5 hp engine gives a top and cruising speed of 75 mph.

On the Convertible the top cover folds back easily. And then lies so flat that the elegant sporting lines of the car are emphasized even more.

Or do you prefer a more powerful car? Here it is.







# The Volkswagen 1500 Karmann Ghia





with a 66hp twin carburetor engine.





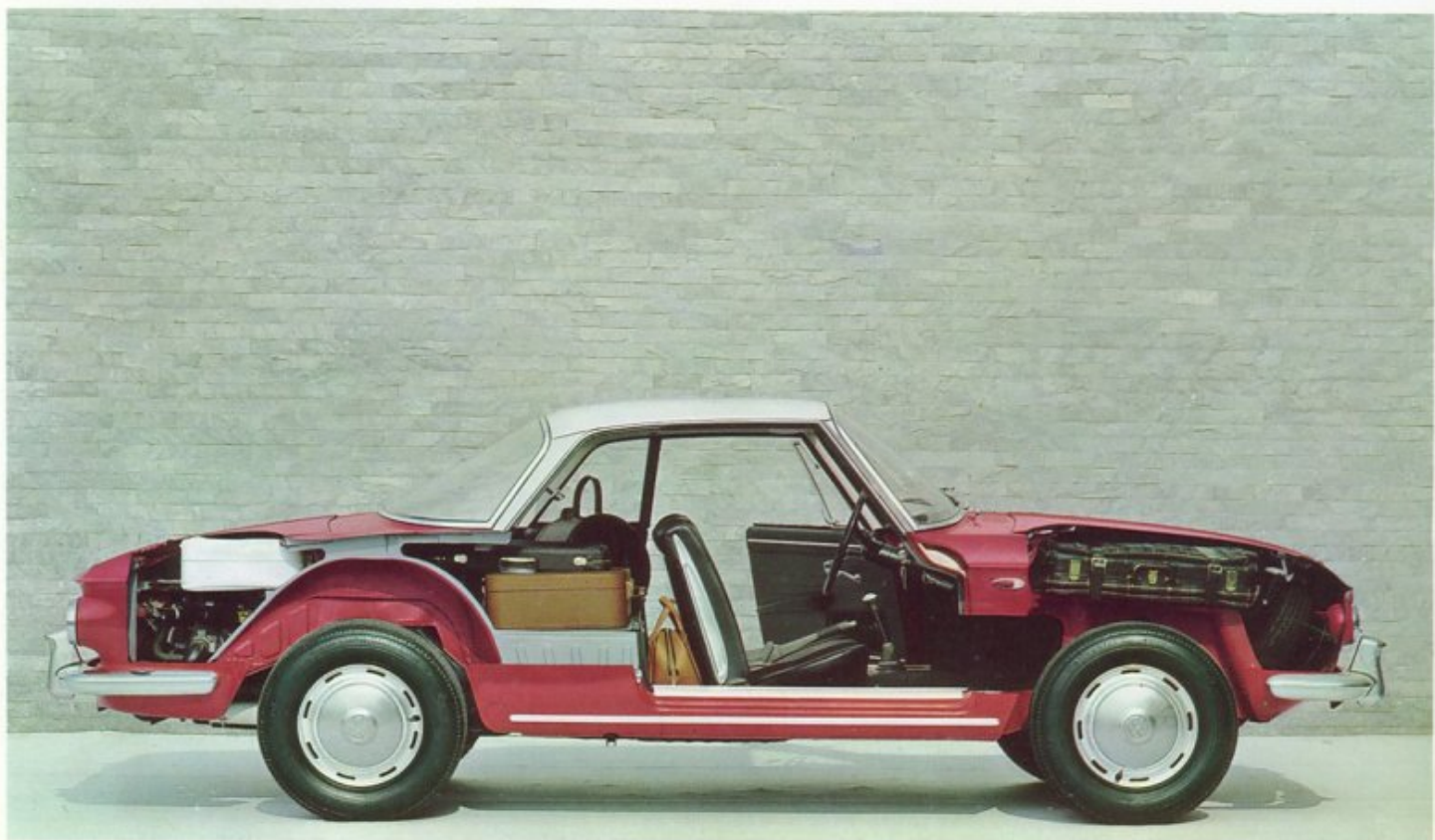
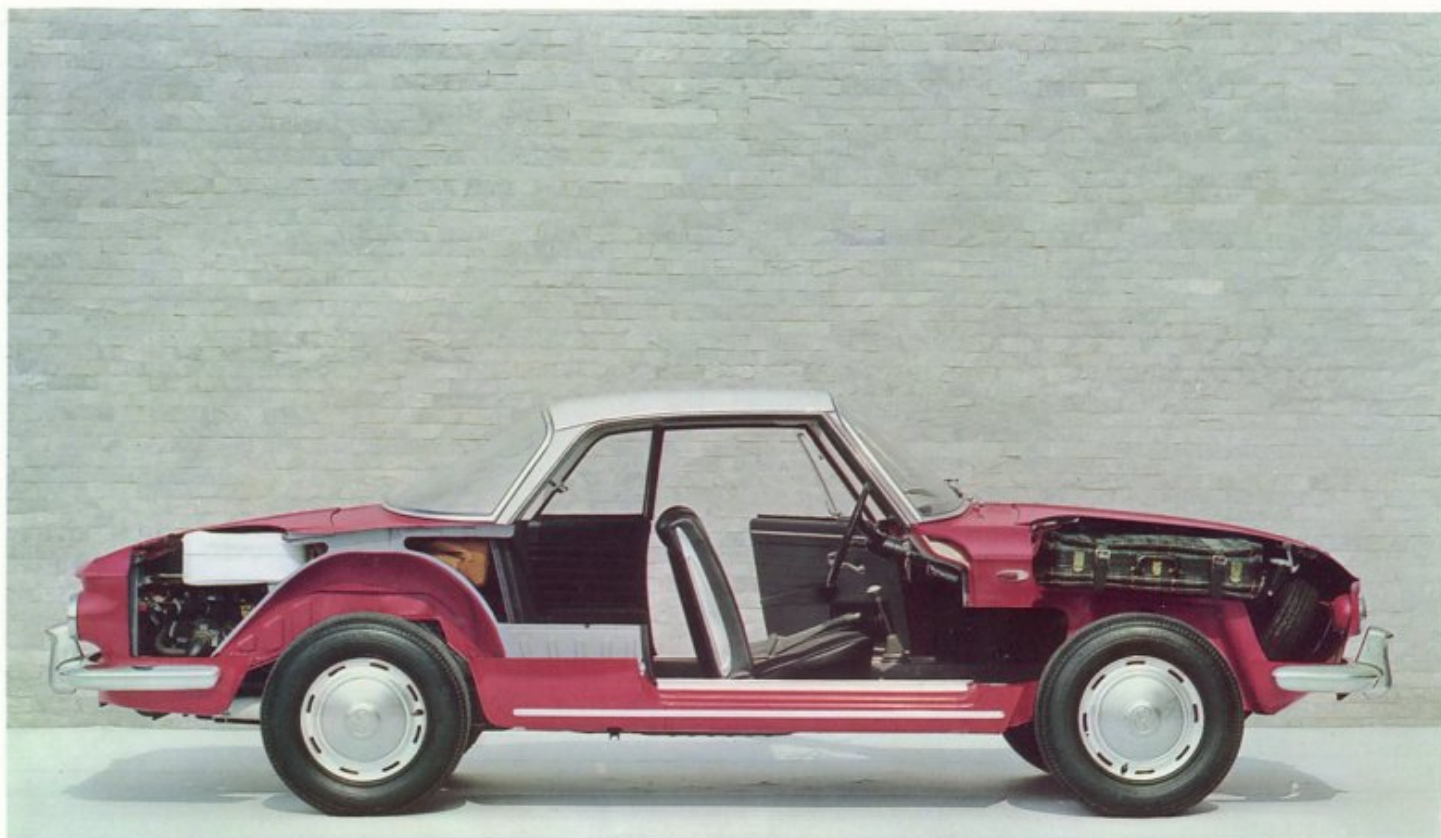


It is generously equipped





and has lots of room for luggage.





The VW 1500 Karmann Ghia is the second Karmann Ghia.

It is even more roomy.

It is even more comfortable.

It is even more powerful.

And it is the most elegant and luxurious automobile that we have produced based on the Volkswagen idea. (At a sensible price.)

Its special body has a flat front hood and rear hood. It has built-in twin horns and fog lamps.

The interior?

Two deep arm chair type seats.

Each 22 inches wide.

Adjustable to any position fore and aft and with backrests which can be set at any angle.

An instrument panel with built-in switches. A tasteful, elegant yet luxurious trim. (Electrically operated steel sliding roof available at extra charge.)

The VW 1500 Karmann Ghia has three luggage compartments.

One under the front hood.

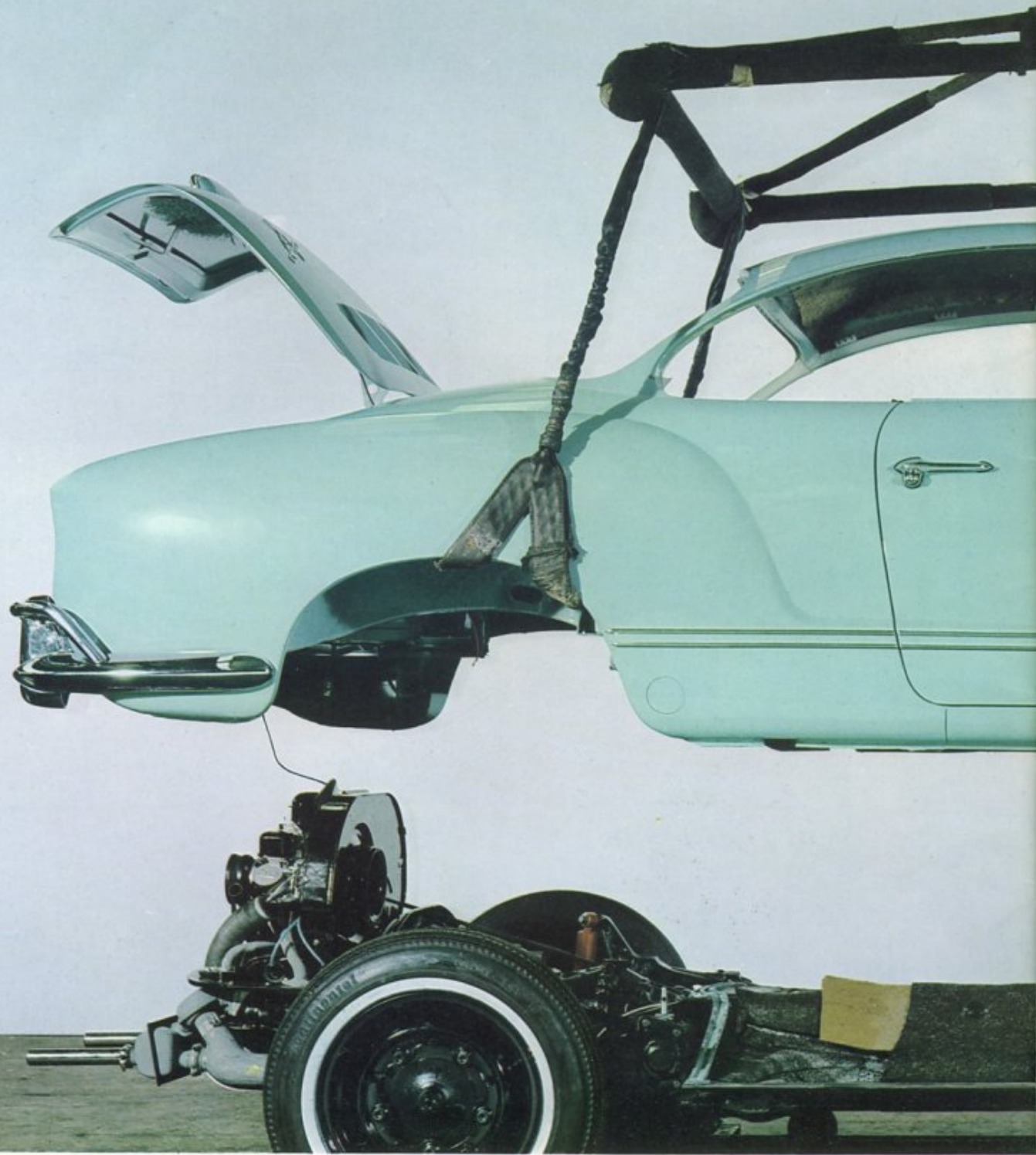
7.2 cu. ft. The second above the flat and low slung rear engine.

4.2 cu. ft. The third behind the rear bench seat. 3.2 cu. ft.

(You can make room for 10.6 cu. ft. of luggage here by folding down the rear bench seat backrest.)

The 66 hp twin carburetor engine gives a top and cruising speed of 90 mph.

Above the VW Karmann Ghia is a luxurious car.





And underneath the body: a genuine Volkswagen.





That's why it's backed by VW Service





in 136 countries throughout the world.





# Technical Data

## Volkswagen 1200 Karmann Ghia Coupé / Convertible

### Engine

Four cylinder, four stroke, rear-mounted. Bore x stroke 3.03 x 2.52 ins. Mean piston speed: 1512 ft/min at 3600 rpm. Capacity 72.74 cu. ins. Compression ratio 7.0 : 1. Output 41.5 hp at 3900 rpm (SAE). Maximum torque 65.1 ft/lbs at 2400 rpm (SAE). Force feed lubrication with oil cooler. Air-cooled with fan, thermostat regulation. Oil bath type air cleaner and accelerator pump. Carburetor and air intake preheating.

### Electrical system

Battery 6 V, 66 Amp/h capacity. Generator 180 W. Asymmetrical low beam. Headlamp flashers. Self-cancelling turn indicators. Combined ignition starter switch with non-repeat lock. Interior light for contact switches in doors. Rheostat instrument panel lighting. Twin horn operated by a lever on steering wheel. Selfparking windscreen wipers. Windscreen washer.

### Transmission

Via dry, single plate clutch, full and bulk synchronized fourspeed gearbox, differential and swinging half axles to rear wheels. Gearbox ratios: 1—4 gears: 3.80/2.06/1.32/0.89/Reverse 3.88 : 1. Rear axle 4.375 : 1.

### Chassis

Central tube with welded-on platform. Independent suspension with crank arms at the front and trailing arms at the rear and swinging axles; torsion bar suspension, telescopic shock absorbers, rubber stops and torsion bar stabilizer. Worm and roller steering, self-centring, with maintenance-free tie rod ends and hydraulic steering damper. Turning circle approx. 36 ft. Tubeless tyres 5.60—15. Hydraulic four-wheel foot brakes with a total effective lining area of 96 sq. in. Fuel tank at front of vehicle under front hood; capacity 8.8 gallons = good for approx. 300 miles; reserve indication by fuel gauge.

### Body

Two seats plus occasional two-seater rear bench seat in Coupé and Convertible. Two doors approx. 40 ins wide with pockets, armrests, locks and wind-down and hinged windows. Rear side windows hinged, on the Convertible fully lowerable wind-down windows. All windows of safety glass (Convertible: synthetic glass). Two luggage compartments, front 3.7 cu. ft., behind rear seat 6.3 cu. ft. (Convertible 3.9 cu. ft.), additional capacity with backrest folded down 7.1 cu. ft. in the Coupé and 5.3 cu. ft. in the Convertible. Total available luggage capacity with two persons in the vehicle: Coupé 17.1 cu. ft., Convertible (top closed) 12.9 cu. ft. Front seats with large range of movement and backrest adjustable to three angles, fresh air heating with defroster outlets on windscreen and (on Coupé only) on rear window and 4 outlets in the footwell. Fresh air ventilation. Coupé obtainable in two-tone on request at extra cost.

### Dimensions — Weights — Performance

Wheel base 94.5 ins. Track front/rear 51.4/50.7 ins. Length/width/height 163/64.3/52.4 ins. Kerb weight/maximum load 1808/705 lbs = total weight 2513 lbs. Maximum and cruising speeds 75 mph — 4040 rpm. Hill climbing ability (with 2 occupants) 1—4 gears: 39/20.5/12/6.5 %. Fuel consumption 37.5 mpg (at half load and a steady  $\frac{3}{4}$  of top speed on level road).

## Volkswagen 1500 Karmann Ghia Coupé

### Engine (*deviations from 1200 specifications*)

More compact flat twin carburetor engine. Bore x stroke 3.27 x 2.72 ins. Mean piston speed 1902 ft/min at 4200 rpm. Capacity 91.10 cu. ins. Compression ratio 8.5 : 1. Output 66 (SAE) bhp at 4800 rpm. Maximum torque 83.2 ft/lbs at 3000 rpm (SAE). No mixture preheating.

### Electrical system (*deviations and extras*)

77 Ah battery. Dynamo 200 W. Two fog lamps. Two parking lamps. Automatic rear luggage compartment light. Cigarette lighter.

Windscreen wipers with rheostat speed control.

### Transmission (*deviations*)

Differential ratio 4.125 : 1.

### Chassis (*deviations*)

Turning circle approx. 35 ft.  
Tyres 6.00 S—15 L, tubeless. Effective braking surface 149 sq. ins.

### Body (*deviations and extras*)

Only available as Coupé.

Three luggage compartments, under front hood 7.2 cu. ft., behind rear seat 3.2 cu. ft., with backrest lowered 7.4 cu. ft., under rear hood 4.2 cu. ft. Total available luggage capacity with 2 passengers in vehicle 22 cu. ft.

Front seat backrests adjustable to any angle, locked when vehicle is in motion.

Electrically operated sliding roof at extra cost.

### Dimensions — Weights — Performance

Wheel base 94.5 ins. Track front/rear 51.6/53.0 ins. Length/width/height 168.5/63.8/52.6 ins. Kerb weight/maximum load 1984/838 lbs = permissible total weight 2822 lbs. Maximum and cruising speed 90 mph — 4500 rpm. Climbing ability (with 2 persons) 1—4 gear: 45.5/23.5/14/8 %. Fuel consumption 35 mpg (at half load and a steady  $\frac{3}{4}$  of top speed on level road). Octane rating 95 Research ON.

VOLKSWAGENWERK AG · WOLFSBURG · GERMANY