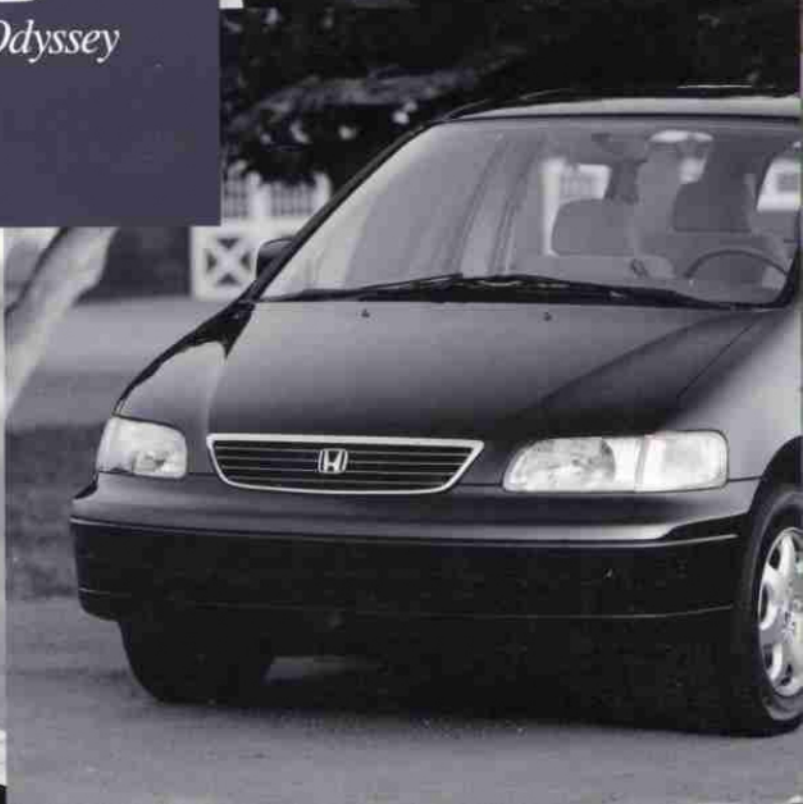
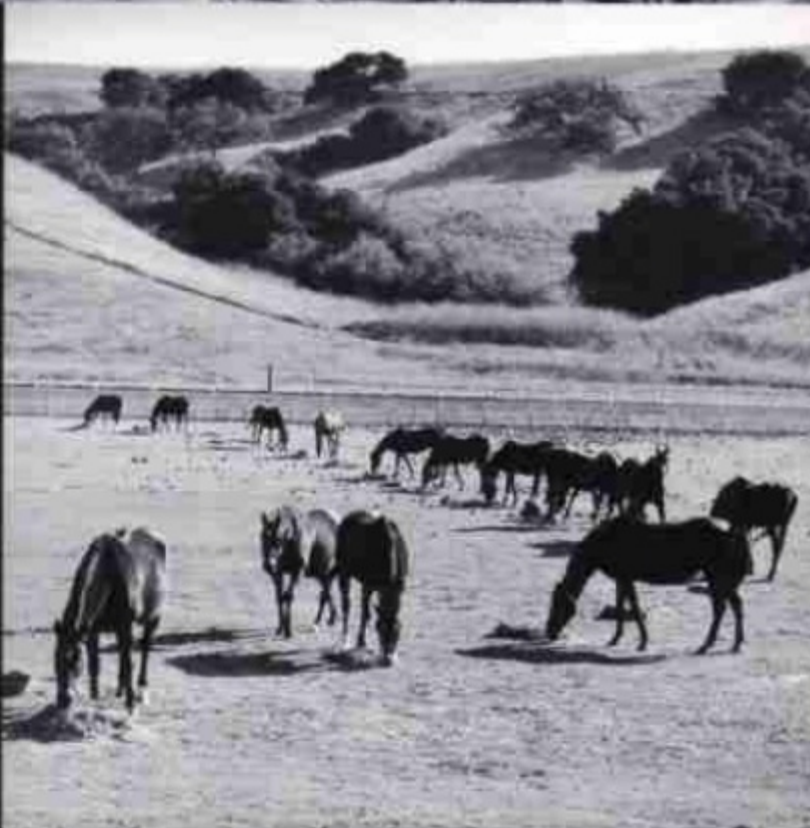
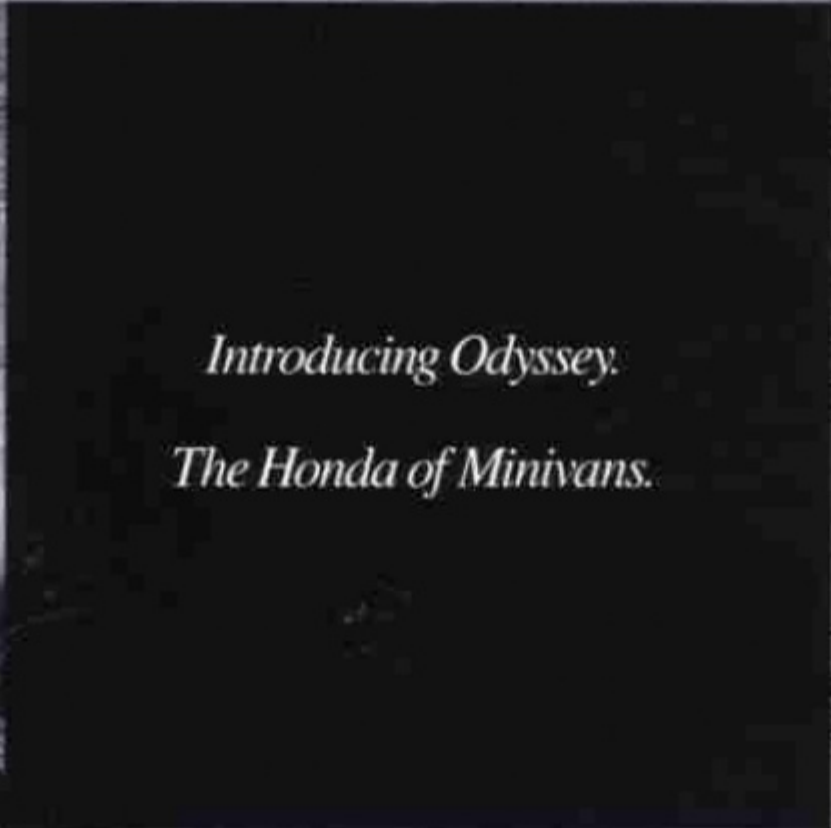


*1995 Odyssey*







Odyssey EX shown in Heather Mist Metallic with accessory roof rack.

*The Odyssey. Or, how we  
got excitement and family  
vehicle in the same sentence.*



The Honda Odyssey represents an innovative discovery in family vehicle development. Namely, that before you had the need for extra cargo space, before you had the need for additional seating, you had something called desires. The Odyssey is built around the unique idea that you still do.



Odyssey LX

**Odyssey LX includes:** Dual Airbags (SRS), 2.2 Liter, 140-hp, 16-Valve Engine with PGM-FI, 4-Speed Automatic Transmission, Anti-Lock Braking System (ABS) with 4-Wheel Disc Brakes, Front and Rear Stabilizer Bars, 4-Wheel Double Wishbone Suspension, P205/65 R15 All-Season Tires, Retractable Fold-Down Third-Row Bench Seat, Dual Air Conditioning, Variable-Assist Power Steering, AM/FM High-Power (4x12.5-Watt) Stereo Cassette, Power Windows and Mirrors, Power Door and Tailgate Locks, Cruise Control, Adjustable Steering Column, Six Beverage Holders, Driver's Seat Armrest, Rear Window Wiper/Washer, Rear Window Defroster with Timer, Dual Vanity Mirrors, 2-Speed/Intermittent Windshield Wipers, Courtesy Door Lights, Cargo Area Light, Upper and Lower Glove Compartments, Quartz Digital Clock, Coin Box, Maintenance Interval Indicator, Choice of Two LX Seating Configurations: 6-Passenger Version has Front Bucket Seats, Removable Second-Row Bucket Seats and Retractable Fold-Down Third-Row Bench Seat; 7-Passenger Version has Second-Row 50/50 Split Folding Bench Seat (Available February 1995) **Body Colors:** Frost White, Sage Green, Bordeaux Red, Nocturne Blue, Azure Blue-Green, Heather Mist



Odyssey EX

**EX includes:** 6-Passenger Seating with Front Passenger and Second-Row Bucket Seats with Inboard Armrests, 15" Alloy Wheels, Power Sunroof, Remote Entry System, Driver's Seat with Power Height Adjustment, AM/FM High-Power (4x20-Watt) Stereo Cassette with 6 Speakers, Body-Colored Body Side Moulding, Map Lights **Body Colors:** Frost White, Sage Green, Bordeaux Red, Nocturne Blue, Azure Blue-Green, Heather Mist

**Odyssey** Presenting the Honda Odyssey. A vehicle designed to comfortably travel that line between needs and desires. A multipurpose vehicle designed with the kind of thinking you'd only expect from Honda. In short, a vehicle designed to fit into your life.

One glance at the Odyssey and you'll sense something different. Perhaps it's the way the Odyssey sits. Comfortable and inviting. Making it easy for you to get in and out. And making roof access more of a simple

reach than an expedition. Or maybe it's the convenient four doors with power operating windows, a common sense feature curiously missing from most minivans.

Step inside and this sense of distinctiveness continues. You'll notice a retractable third seat that quickly and easily folds flat into a well. You'll also notice standard dual air conditioning that will allow your passengers to control their own climate. In addition, the Odyssey gives you the option of 6- or 7-passenger (LX only) seating arrangements, ensuring that you get a vehicle that fits well into your family and vice versa.

But the real difference becomes evident when you hit the road. You'll sense that the Odyssey doesn't handle like a minivan. You see, it's designed with 4-wheel double wishbone suspension.

And then there are those other things that the Odyssey gives you. Like peace of mind. Which comes from knowing each Odyssey has dual airbags (SRS), an anti-lock braking system (ABS) with 4-wheel disc brakes, a reinforced body structure and 5-mph impact-absorbing bumpers. And it meets 1997 federal automobile side-impact standards.

The Odyssey is available in two models: the feature-rich LX and the luxurious EX. Each is designed to be as versatile as you are.



Odyssey LX shown in Sage Green Metallic

*When was the last time  
you thought of a road map  
as pleasure reading?*



Roads become streets, streets become highways,  
highways become interstates. All gently passing  
beneath the thoughtfully appointed interior of your  
Honda Odyssey. It's enough to turn any final destina-  
tion into the denouement.

*The Odyssey was built to handle any number of climates. Including the ones that take place  
inside the vehicle. Standard dual air conditioning allows both front- and rear-seat passengers to  
control their own climate. A feature sure to make everyone's ride more pleasurable.*

**Odyssey Interior** When you think about it, vehicles are a lot like friends. Before you choose one, you've really got to like what's on the inside.

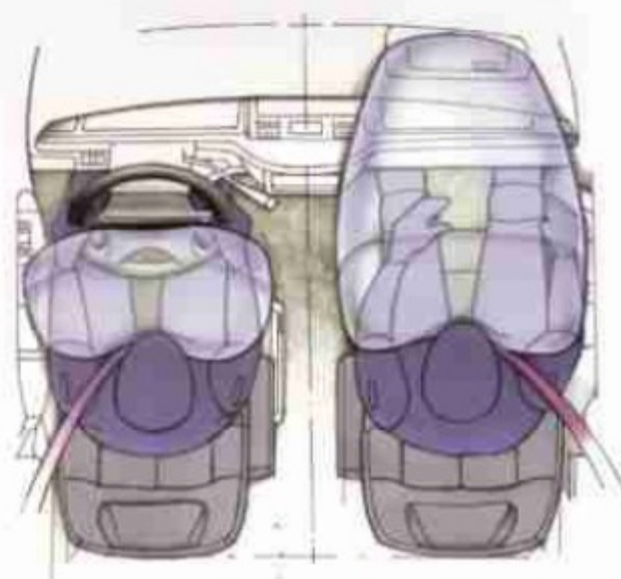
Which is why we've given so much attention to creating the most relaxing, versatile interior available. The Odyssey is loaded with thoughtful details. Like the high-quality fabrics that are found throughout. And the theater seating that's built on a gradual incline so everyone, not just the driver, has a superb view. Plus there's the practical 4-door design with power operating windows, versatile storage compartments throughout, and the option of 6- or 7-passenger (LX only) seating.

Sit behind the wheel of the Odyssey and you'll promptly notice how easy it is to see all the gauges. And how thoughtfully placed and easy to use all the controls are. You'll get the sense that the Odyssey was specifically made with you in mind. But that's just what you'd probably expect from a vehicle with the name Honda on it.

Now here are some things you might not expect to find in many vehicles. Extensive sound-damping

materials and rigid body construction that help keep interior noise to a minimum. Plus power windows and mirrors, power door and tailgate locks, dual airbags, cruise control and a triple-function audio system that can control an accessory C/D changer, all standard.

It all adds up to a vehicle that will make both those short errands and long journeys more of a pleasure than a chore. Kind of like a good friend.



Every 1995 Odyssey comes equipped with dual airbags.



Odyssey EX instrument panel shown in gray.

*Usually, places this spacious  
come with an echo.*



We all have the need to feel the freedom of wide-open territory. The vast solitude that can only be offered by a sprawling space. Eventually, however, you will have to get out of your Odyssey.

*One mark of true innovation comes not in the form of an answer, but a question. Specifically, "Why didn't someone think of that before?" Which is just what you'll be saying when you see the Odyssey's revolutionary third seat. A third seat designed to quickly and easily fold flat into the floor. Instantly giving you more cargo space, without the need to store the seat somewhere else. It's a feature sure to make life more convenient—the other mark of true innovation.*



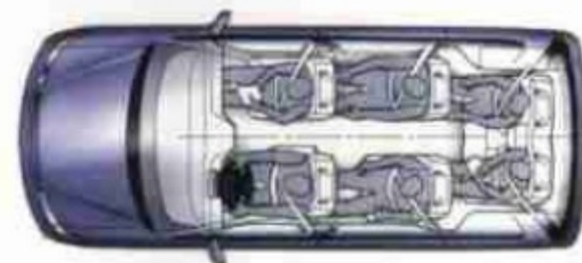
The second-row bucket seats are lightweight and easy to remove.

**Odyssey 6-Passenger Versatility** You have places to go, things to do, people to carry and, with the Honda Odyssey, the ability to do all of the above.

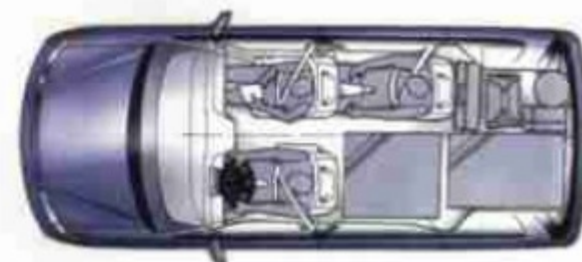
The versatile 6-passenger configuration allows you to carry those people in the utmost comfort. Giving second-row passengers their own individual bucket seats. And the rest of the passengers in the vehicle a lot more peace and quiet.

The Odyssey's unique low step-in height makes entry and exit easier for adults and young children, without sacrificing headroom. It also affords you easy access to the accessory roof rack.

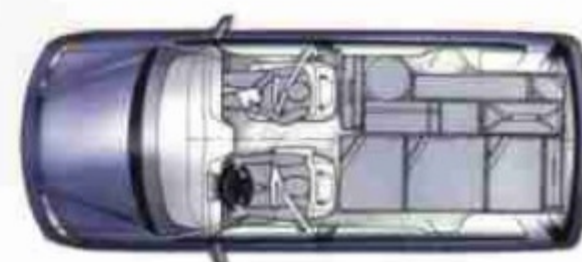
Extra touches like a power sunroof (EX), map lights (EX), both driver's and passenger's vanity mirrors and six beverage holders that fit a variety of sizes, as well as juice boxes, are sure to make getting there considerably more than half the fun.



Six people sit comfortably in this arrangement.



Three people feel comfortable with plenty of luggage space.



The Odyssey is great for carrying cargo.



Odyssey EX interior shown in gray



Odyssey EX interior shown in gray.

*You have needs, you have responsibilities, you have desires. And now you have something special to drive.*



They say that life is a series of compromises. They say you have to give up in order to get. They say you can't be practical, reliable, yet fun. They obviously haven't seen the new Odyssey.

*Every great journey begins with a single step. And in the Honda Odyssey, we made sure yours would be an easy one. You see, the Odyssey is built lower to the ground than most minivans. Which makes getting in and out of your Odyssey considerably less of a trek.*



The bench seat easily converts to a 50/50 split configuration.

**Odyssey 7-Passenger Versatility** Step inside the Odyssey and tell us if this isn't true: It seems to grow when you get in. It's as if the large cabin defies any exterior bounds.

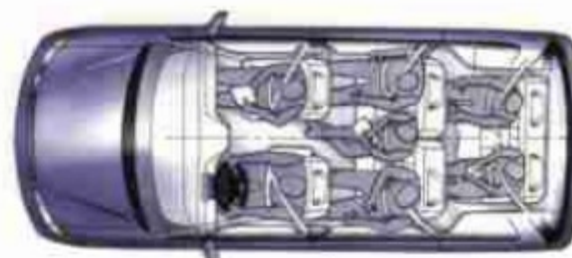
Are we talking new laws of physics here? No, just superior design. The kind of design that enables the Odyssey to carry seven people\* in complete comfort. And offers generous rear legroom.

But there's more to a family vehicle than the space inside. There's also the space it occupies in your life. Which, in a word, means versatility.

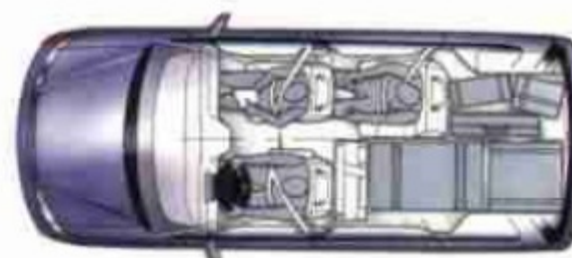
That's why we offer a bench seat (LX) that allows you to quickly arrange the seating configuration to meet the needs of your passengers. And why we made sure the bench was easy to fold forward. So you can adjust the second-row seating for rear cabin access, or fold the bench up completely for more cargo storage. We also included a deep cargo well behind the third seat, designed to hold things like grocery bags firmly in place.

\*Seven-passenger LX model, available February '95.

The Odyssey features a few other details that will make you a bit more comfortable. Like child-proof rear door locks, for one. Plus there's a cargo light, 2-speed/intermittent windshield wipers, a rear window defroster with timer and upper and lower glove compartments, as well as a console storage compartment.



Seven people can ride in complete comfort.



In this configuration, three people can sit comfortably, with plenty of space for luggage.



The Odyssey offers a wealth of cargo space.



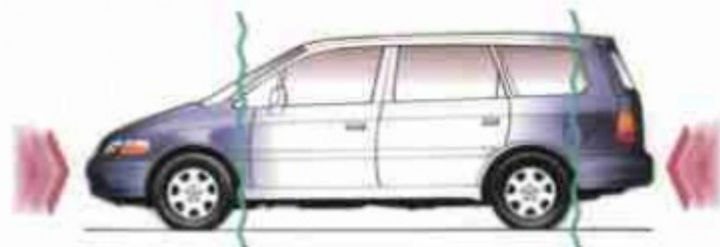
Odyssey LX 7-passenger interior shown in gray with accessory In-Dash™ cellular phone.

*Designed to protect your  
most precious cargo.*



You don't take safety for granted. Neither do Honda engineers. They designed the Odyssey to be a vehicle you can believe in. One you can trust. One you can depend on.

*The Honda Odyssey carries people, so Honda engineers built it to meet all passenger-car safety standards. Passive and active restraint systems and impact protection are integral parts of the design, rather than merely components that have been adapted to an existing vehicle.*



Front and rear crush zones are designed to absorb impact energy.

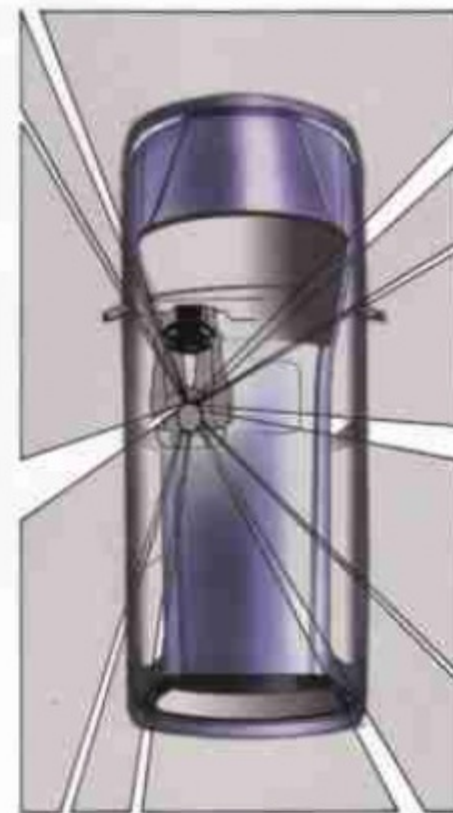
**Odyssey Safety** The Odyssey body incorporates some of the latest thinking in passenger protection. The Odyssey's reinforced body structure is engineered to dissipate impact energy from the front, sides and back.

Sturdy front and rear crush zones progressively absorb crash energy in a full-frontal, offset-frontal or rear impact. The passenger compartment, including the third-row seat, is surrounded by additional reinforcement to help it resist deformation in an impact. Steel beams inside the doors and a sturdy reinforced frame help the Odyssey meet strict 1997 federal passenger vehicle side-impact standards.

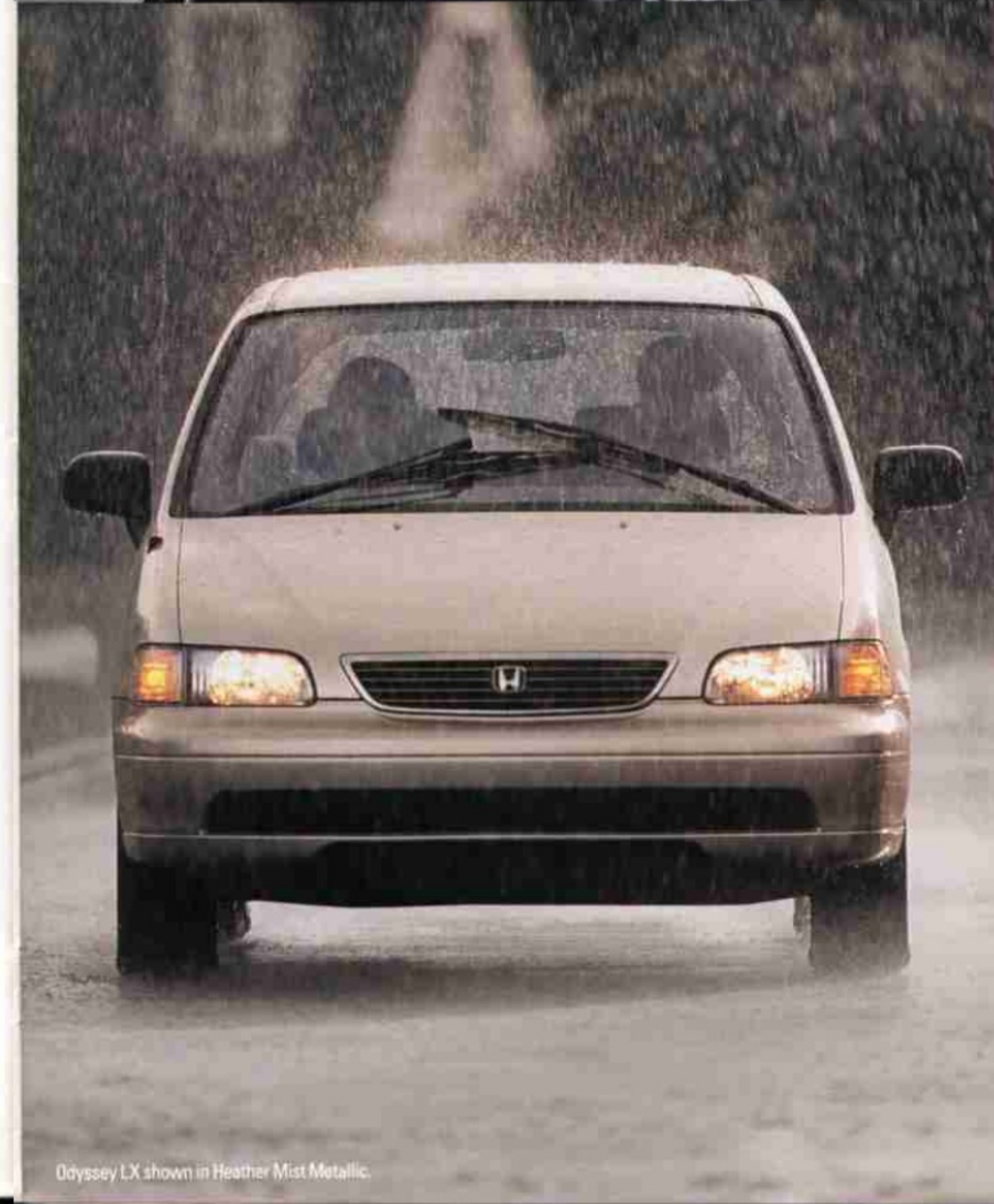
**Dual Airbags and 3-Point Seat Belts** Backing up this energy-absorbing structure are passive and active restraint systems. Dual airbags (SRS) are standard on the Odyssey, and all outboard seating positions are equipped with 3-point seat belts (the second-row center position on the 7-passenger Odyssey has a lap belt).

In a severe frontal impact, the seat belts form the primary means of restraint (they can protect you in a variety of impacts). Airbags serve as a supplemental restraint system which can help minimize serious injury to the head and upper torso.

The outboard passenger seat belts have an auto-locking retractor feature that can be used to hold a child safety seat snugly in place.



Its large glass area gives the Odyssey outstanding visibility in all directions.



Odyssey LX shown in Heather Mist Metallic.

**Anti-Lock Braking System (ABS)** There are few tasks as challenging to a driver as safely stopping an automobile in an emergency. You should have every advantage you can get. That's why 4-wheel disc brakes and a Honda-designed 4-wheel anti-lock braking system (ABS) are standard on the Odyssey.

Under extreme braking conditions, such as downhill braking or repeated braking, you need brakes you can depend on. Four-wheel disc brakes dissipate braking heat quickly for better fade control.

During hard braking, brakes can lock, causing the wheels to skid and a loss of steering control. Wet surfaces, such as snow-covered or rain-slick roads, only serve to increase this possibility. Under these conditions, anti-lock brakes (ABS) help the driver retain steering control.



Anti-lock brakes can help the driver retain steering control during hard braking.

*Performance by design.*



What are your plans today? Getting away from it all? Or just running a few errands around town? Whatever they are, or wherever they take you, your Odyssey will take you there in comfort and style.

*Front-wheel drive is the ideal drivetrain layout for the Honda Odyssey. The body doesn't have to sit on top of the driveshaft, so engine noise and vibration are isolated outside the passenger compartment. This allows for the maximum amount of usable interior space.*



The Honda-designed second-order balance system helps minimize engine vibration.

**Odyssey Engineering** With 2.2 liters and 16 valves, the 140-horsepower Odyssey engine combines minivan performance with uncanny smoothness, outstanding reliability and Honda efficiency.

Honda engineers tuned the Odyssey engine's power output to match the driving demands of a minivan. Ample torque is available over a broad range of engine speeds (145 @ 4500 rpm). Power is there when you need it for merging or passing. The high-efficiency engine makes cruising effortless at highway speeds.

The engine uses a Honda-designed second-order balance system to help eliminate annoying engine vibration. And a quiet intake and exhaust system and sound-absorbing materials in the engine compartment all help to silence engine noise.

Reliable Honda Multi-Point Programmed Fuel Injection (PGM-FI) and a high-voltage, electronic ignition ensure quick starting and smooth acceleration whether it's hot or cold outside.

Honda dependability is legendary. Every Odyssey engine is tested before it leaves the factory to ensure it meets Honda performance standards. To ensure trouble-free operation and a long life, tough forged steel is used for the connecting rods and crankshaft.

Less engine weight means quicker acceleration, greater fuel efficiency and better handling, so the cylinder head and block are made from aluminum alloy.



The 2.2 liter Odyssey engine produces plenty of torque over a broad range of usable engine speeds.



Odyssey EX shown in Frost White.

Forget what you've heard  
about minivans.

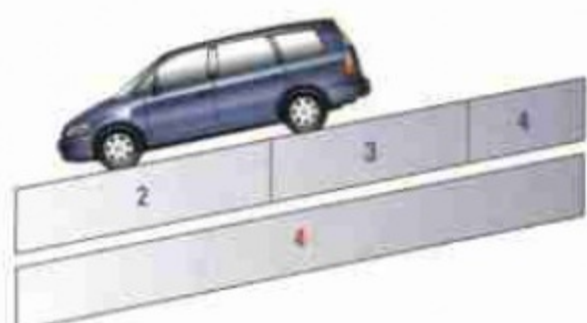


Does driving a minivan seem like a chore to you?  
With the Odyssey, you don't have to learn to drive all  
over again, because it handles like a car, not like  
some truck with seats in it. Besides, you have more  
important things to think about.

A minivan with car-like handling—how many times have you heard that before? Get ready for a pleasant surprise: The Odyssey doesn't just ride and handle like a car—it rides and handles like a Honda. You don't have to learn to drive all over again.



■ Going uphill, a vehicle with Grade Logic automatically downshifts to 3rd and then 2nd gear.  
■ A vehicle without Grade Logic will "hunt" between gears.



■ Going downhill, Grade Logic downshifts to 3rd and then 2nd gear to help slow the Odyssey.  
■ A vehicle without Grade Logic remains in 4th gear.

**Odyssey Ride and Handling** The Odyssey is the only vehicle of its type to use 4-wheel double wishbone suspension. An adaptation of the suspension system used on many high-performance sedans, it gives you the best of both worlds: a smooth, compliant ride and exceptional handling and control.

Double wishbone suspension differs from other suspension systems because it uses an upper and a lower suspension link—not a strut—to control wheel movement. This leaves the shock absorbers and springs free to soak up the energy of potholes, bumps and broken pavement.

Some minivans have a good ride, but handle like a bus. Not the Odyssey. It's as comfortable to drive as your own car. Four-wheel double wishbone suspension gives it exceptional maneuverability and roadholding. It tracks precisely around curves, changes lanes with agility, has an impressive amount of grip and control in corners, and is stable in crosswinds and at highway speeds.

**Transmission** An electronically-controlled 4-speed automatic transmission is standard on the Odyssey. It operates

so smoothly, you'll hardly notice it shifting. Overdrive fourth gear and a lockup torque converter improve fuel economy at highway speeds.

Electronic sensors and Honda Grade Logic programming pick the right gear for each driving situation. When Grade Logic determines that the Odyssey is driving uphill, it will downshift and hold 3rd or even 2nd gear to eliminate hunting between gears. When driving down a steep hill, Grade Logic will tell the transmission to downshift to a lower gear, so that engine braking can help slow the vehicle.

In stop-and-go city driving, the Odyssey transmission will downshift to a lower gear for better braking, then hold it longer for better acceleration.



Compact double wishbone rear suspension gives the Odyssey stable handling and a smooth ride, yet takes up minimal space.



Odyssey EX shown in Azure Blue-Green Pearl.

See yourself  
reflected in more than just  
the vanity mirror.



One of the benefits of owning an Odyssey is the service your Honda dealer provides. There are over 1,000 dealerships nationwide, all dedicated to your continuing satisfaction. The service technicians have been trained by Honda. And they use Genuine Honda Parts. It makes your 3-year/36,000-mile limited warranty that much more valuable. In fact, your Honda dealer is one big reason Honda ranks Number One in overall Owner Loyalty for the fourth year in a row.\*

**Genuine Honda Accessories** Everyone should have their own personal Odyssey. Genuine Honda accessories will help you with yours. Your Honda dealer will be happy to show you these and other available accessories. Order them with your Odyssey and they will be covered by the Honda 3-year/36,000-mile limited warranty.

The Odyssey LX above is shown in Nocturne Blue Pearl with an accessory Roof Rack with Bike Attachment and Splash Guards.<sup>1</sup> Other accessories shown: CD Changer,<sup>2</sup> Floor Mats,<sup>3</sup> Car Cover,<sup>4</sup> 15" Alloy Wheels,<sup>5</sup> and Underseat Tray.<sup>6</sup>



The Honda Theft-Deterrent System features an engine starter cut-off and a glass breakage detector.

**Also available:** Honda In-Dash™ Cellular Phone, Fenderwell Trim, Armrest, Cargo Net, Map Lights, Steering Wheel Cover, Rear Accessory Socket, Fog Lights, Full Nose Mask, Sunroof Visor, Wheel Locks, Security/Keyless Remote Entry System, Roof Rack Ski Attachment, Roof Basket, Touch-Up Paint. See your dealer for details.



#### SPECIFICATIONS AND DIMENSIONS

ENGINE	ODYSSEY LX	ODYSSEY EX
Type: Aluminum-Alloy In-Line 4	■	■
Displacement (cc.)	2156	2156
Horsepower @ rpm (SAE net)	140 @ 5600	140 @ 5600
Torque (lb.-ft. @ rpm)	145 @ 4500	145 @ 4500
Compression Ratio	8.8:1	8.8:1
Valve Train: SOHC 16-Valve	■	■
Fuel System: Multi-Point Fuel Injection	■	■
Ignition System: Electronic	■	■

#### DRIVETRAIN

Type: Front-Wheel Drive	■	■
Automatic Transmission: 4-Speed	■	■
Final Drive Ratio	4.43:1	4.43:1

#### BODY/SUSPENSION/CHASSIS

Body Type: Unit Body	■	■
Suspension: 4-Wheel Double Wishbone	■	■
Stabilizer Bar (mm, front/rear)	30.0/13.0	30.0/13.0
Steering Type: Effort-Sensitive Power Rack-and-Pinion	■	■
Turning Diameter, Curb-to-Curb (ft.)	37.6	37.6
4-Wheel Disc Brakes	■	■
4-Wheel Anti-Lock Braking System (ABS)	■	■
Wheels	15" with Full Covers	15" Alloy
Tires: All-Season	P205/65 R15 Goodyear Conquest	P205/65 R15 Goodyear Conquest

#### EXTERIOR DIMENSIONS

Wheelbase (in.)	111.4	111.4
Length (in.)	187.2	187.2
Height (in.)	64.6	64.6
Width (in.)	70.6	70.6
Track (in., front/rear)	60.0/60.8	60.0/60.8
Curb Weight (lbs.)	3450 (6-Passenger)/3472 (7-Passenger)	3483

#### INTERIOR DIMENSIONS

Headroom (in., front/middle/rear)	40.1/39.3/37.5	38.9/39.3/37.5
Legroom (in., front/middle/rear)	40.7/40.2/34.0	40.7/40.2/34.0
Shoulder Room (in., front/middle/rear)	57.1/57.9/47.6	57.1/57.9/47.6
Hiproom (in., front/middle/rear)	53.3/53.1/40.9	53.3/53.1/40.9
Cargo Volume (cu. ft., behind rear seat)	9.8	9.8
Cargo Volume (cu. ft., rear seat folded)	45.9	45.9
Cargo Volume (cu. ft., maximum)	102.5 (6-Passenger)/93.5 (7-Passenger)	102.5
Passenger Volume (cu. ft.)	152.8	151.2

#### EPA MILEAGE ESTIMATES/FUEL CAPACITY

City/Highway	20/24	20/24
Fuel (gal.)	17.2	17.2

#### FEATURES AND STANDARD EQUIPMENT

EXTERIOR FEATURES	ODYSSEY LX	ODYSSEY EX
Power Sunroof	■	■
Rear Window Wiper/Washer	■	■
Remote Entry System	■	■
Dual Power Mirrors	■	■
Alloy Wheels	Accessory	■
Full Wheel Covers	■	■
Body Side Moulding	■	Body-Colored
5-mph Impact-Absorbing Body-Colored Bumpers	■	■

#### INTERIOR FEATURES

Dual Airbags (SRS)	■	■
Driver's Seat with Power Height Adjustment	■	■
Front Bucket Seats with Armrests	Driver's Armrest Only	■
Power Windows w/Auto Down Driver's Window	■	■
Power Door and Tailgate Locks	■	■
Cruise Control	■	■
Front and Rear Air Conditioning	■	■
AM/FM High-Power Stereo Cassette	4x12.5-watt	4x20-watt w/6 Speakers
Map Lights	Accessory	■
Quartz Digital Clock	■	■
Adjustable Steering Column	■	■
Beverage Holders	Fr/Md/Rr	Fr/Md/Rr
2-Speed/Intermittent Windshield Wipers	■	■
Front 3-Point Seat Belts with Adjustable Anchors	■	■
2nd Row 3-Point Seat Belts	w/Center Lap Belt (7-Passenger)	■
3rd Row 3-Point Seat Belts	■	■
2nd Row Seats	Removable Buckets (6-Passenger) 50/50 Split Folding Bench Seat (7-Passenger)	Removable Buckets w/Armrests
3rd Row Seats	Retractable Fold-Down Bench	Retractable Fold-Down Bench
Remote Fuel Filler Door Release	■	■
Tailgate-Open Warning Light	■	■
Rear Window Defroster with Timer	■	■
Low-Fuel Warning Light	■	■
Coin Box	■	■
Cargo Area Storage Bin	■	■
Upper and Lower Glove Compartments	■	■
Dual Vanity Mirrors	■	■
Child-Proof Rear Door Locks	■	■
Maintenance Interval Indicator	■	■

#### EXTERIOR/INTERIOR COLORS

Frost White/Jade	■	■
Sage Green Metallic/Jade	■	■
Bordeaux Red Pearl/Gray	■	■
Nocturne Blue Pearl/Gray	■	■
Azure Blue-Green Pearl/Light Beige	■	■
Heather Mist Metallic/Light Beige	■	■



Bordeaux Red Pearl



Sage Green Metallic



Frost White



Heather Mist Metallic



Azure Blue-Green Pearl



Nocturne Blue Pearl

\*J.D. Power & Co., Leading Automobile Sales Analysis of Repeat Ownership, 2/94. 1. Mileage figures shown for comparison only. Actual mileage may vary. 2. Year/36,000-Mile Limited Warranty. Ordinary maintenance items or adjustments, parts subject to normal wear and replacement and certain items are excluded. See your Honda dealer for the terms and conditions of this limited warranty. Honda vehicles meet the strict emissions standards required in some states. Specifications, features, illustrations and equipment shown in this brochure are based upon the latest available information at the time of printing. Although descriptions are believed correct, accuracy cannot be guaranteed. American Honda Motor Co., Inc., reserves the right to make changes at any time, without notice or obligation, in colors, specifications, accessories, materials and models. Some vehicles are shown with optional equipment. © 1994 American Honda Motor Co., Inc. Litho in U.S.A. 02/94.

1995 Honda Vehicles



Accord Sedan



Accord Coupe



Accord Wagon



Civic Sedan



Civic Coupe



Civic Hatchback



del Sol



Prelude



Passport



Odyssey

A Car Ahead  
