



ACURA CL

THE NEW LOOK IN LUXURY PERFORMANCE COUPES

OUR NEW LUXURY SPORTS COUPE
IS MORE THAN EXHILARATING TO THE EYE.
IT'S SOOTHING TO THE SOUL.
PRESENTING THE ACURA CL SERIES.



ACURA CL





The elegant CL bodywork blends classic design cues with state-of-the-art aerodynamics. Acura 3.0CL shown in Cypress Green Pearl.



In conceiving the Acura CL coupe, our designers and engineers were inspired to meet a compelling directive: Build a personalized two-door automobile that

By combining classic coupe elegance with advanced systems, the Acura CL delivers an entirely new and personalized driving experience.



▲ AERODYNAMIC WEDGE SHAPE

Inspired by the simple, purposeful lines of sailplanes, the smooth form of the Acura CL is designed to be aerodynamic yet strong and beautiful. The wide stance promotes superb stability on the road, while the low, sweeping hoodline enhances forward visibility.

combines the gratifying comfort and captivating visual expressiveness of a classic luxury coupe with the performance, sophistication and safety of a state-of-the-art sports touring machine.

The result of their considerable efforts is a breakthrough automobile. The CL coupe blends prominent design cues like an elegant, "neoclassic" front grille and sculptured taillights with an impressive level of standard amenities and proud workmanship, setting a new benchmark of style and refinement in the luxury sports coupe class.

The innovative style of the Acura CL is guided as much by a consideration for the driver as it is by the eyes of our designers. The standard keyless entry system, for example, allows the driver to lock or unlock the doors or trunk with the touch of a remote-control button – while also eliminating the need for an external trunk lock. This both increases the security of the trunk's contents and preserves the smooth, flowing shape of the rear deck lid.

This same fruitful harmony of purpose is evident in the remarkable horsepower and fuel efficiency of the four-valve-per-cylinder, 2.2-liter and 3.0-liter VTEC engines; in the durable yet beautiful exterior shell; and in an inviting cabin whose refined materials and advanced systems create a warm, sophisticated ambience.

With its rare fusion of style and capability, the CL makes driving a new and highly personal experience.



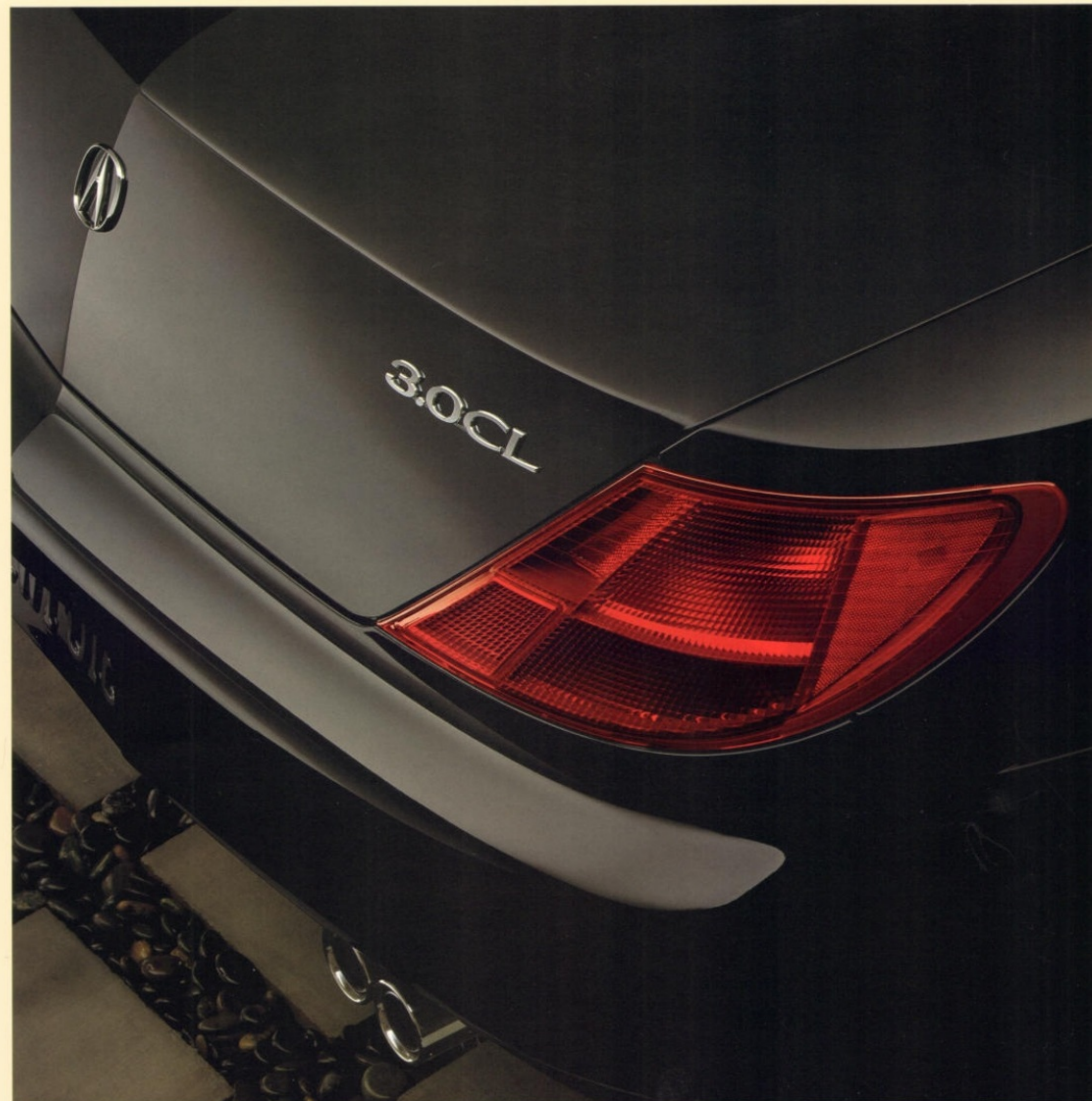
▲ SLIM REAR ROOF PILLARS

Thin yet strong roof pillars help reduce the rear "blind spot" and contribute to an exceptional 318 degrees of visibility.



▲ TAMPER-RESISTANT HANDLES

The door handles of the CL are contoured to fit the hand, while the latch and lock are specially reinforced to help prevent break-ins.





Superb visibility is provided by a low, sweeping hoodline and slim yet very strong roof pillars. Acura 2.2CL shown in Primrose Mist Metallic.



A fine luxury sports coupe should do more than radiate an aura of elegance. It should also transport its driver and passengers in a cabin environment that

and advanced theft-deterrent system; a 6-way power driver's seat and a power sliding glass moonroof.

FROM THE REFINEMENT OF AUTOMATIC CLIMATE CONTROL TO THE RICHNESS OF WOOD-GRAIN-STYLE TRIM, THE CABIN IS REPLETE WITH LUXURY APPOINTMENTS.

caters to the mission of driving while it engages the senses with rich textures and sophisticated amenities.

The spacious cabin of the Acura CL achieves this challenging balance of priorities by integrating fine materials, highly supportive, thickly padded seats and a comprehensive array of creature comforts. Included as standard on the 2.2CL are power windows, door locks and door mirrors; a 6-speaker AM/FM Acura Music System with CD player; an Automatic Climate Control System; a keyless entry system with integrated remote-control "panic button" feature

To this decidedly lavish foundation the 3.0CL adds a 100-watt AM/FM Acura/Bose® Music System with CD player, heated front seats* and a power driver's seat with power walk-in feature for effortless rear-seat access.

Complementing these luxurious appointments is a sculptured interior whose meticulously crafted forms are accented with elegant wood-grain-style trim and soft, leather-appointed seats.*

Further refining this sumptuous cabin are features less apparent to the eye, but no less important to the feel of quality. From extensive sound insulation to vibration-absorbing engine mounts to the reassuring security of a highly rigid structure, the Acura CL treats its passengers to a driving experience of uncommon grace and tranquility.

*Standard with available Premium Package



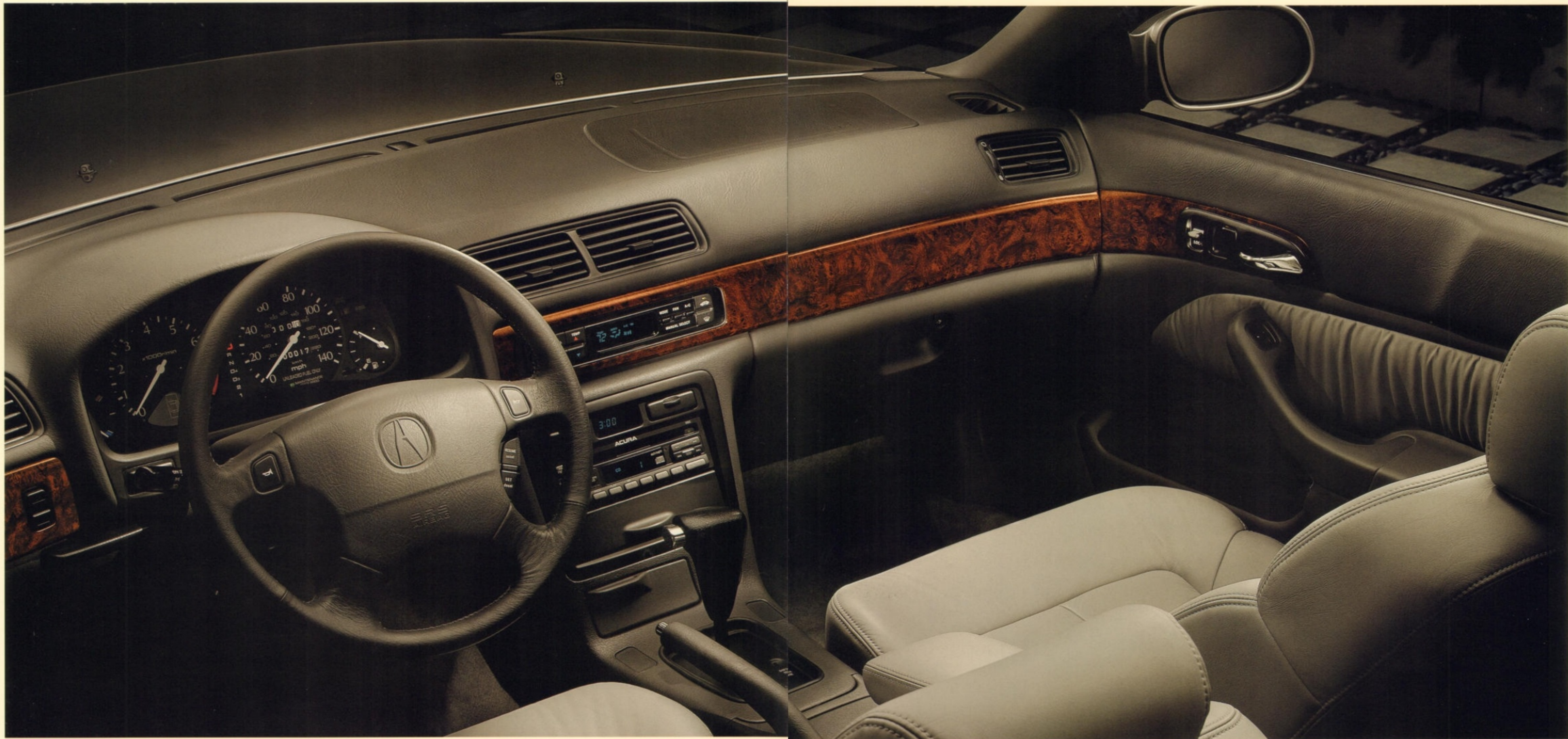
▲ DRIVER'S SEAT WITH POWER WALK-IN AND AUTOPOSITION

For effortless rear-seat access, the 8-way power driver's seat of the 3.0CL includes a power walk-in feature that quickly glides the driver's seat forward whenever the seatback is tilted forward. If an obstruction is detected as the seat returns to its original position, an Autoposition feature – unique in the industry – instantly halts rearward motion and moves the seat forward 30 mm.



▲ AUTOMATIC CLIMATE CONTROL

For exceptional convenience and comfort, the CL features a standard Automatic Climate Control System designed to maintain a selected interior temperature regardless of ambient temperature or weather conditions.



The sculptured cabin features an Automatic Climate Control System and an in-dash CD player. Acura 2.2CL with available Premium Package shown with Quartz leather-appointed interior.

THOUGHTFUL
DETAILS CREATE A
COCKPIT OF
UNCOMMON UTILITY.



▲ A LOCKABLE PASS-THROUGH IN THE REAR SEAT allows the trunk to accommodate extra-long items such as snow skis.



▲ A HANDY TWO-CUP BEVERAGE HOLDER in the center console securely carries standard cups and beverage cans, and hides away discreetly when not in use.



▲ TO KEEP COMPACT DISCS protected and close at hand, the center console includes a covered storage tray that holds up to nine CD jewel boxes.



ACURA CL [FEATURES]

From the Automatic Climate Control System to a tinted, power-sliding glass moonroof, the many desirable features included as standard on the Acura CL

matched Bose® speakers. Both systems incorporate a programmable anti-theft feature and, for a cleaner exterior look and freedom from breakage concerns, a permanent antenna printed into the rear window glass.

Enhanced security and peace of mind are provided by a standard theft-deterrent system. If sensors detect an unauthorized entry, the system sets off a security siren, flashes the lights and disables the starter system. In addition, the security siren can be activated in emergencies by a "panic button" on the convenient keyless entry remote. The remote also locks the doors and arms the entire theft-deterrent system at the touch of one button.

Complementing these amenities are details such as a hidden CD storage tray in the center console and a lockable pass-through in the rear seat, making the Acura CL an automobile every bit as versatile as it is luxurious.

WHAT THE COMPETITION CONSIDERS "LUXURY OPTIONS," THE ACURA CL COUPE INCLUDES AS STANDARD EQUIPMENT.

are artfully designed to create a driving environment of unparalleled comfort and convenience and a level of driving enjoyment unsurpassed in the luxury sports coupe class.

To deliver the gratification of fine sound reproduction, the 2.2CL includes an Acura Premium Music System with AM/FM radio functions and in-dash CD player. Stunning sonic accuracy is provided by a robust 80-watt amplifier and six acoustically engineered speakers. For even more impressive musical performance, the 3.0CL adds a 100-watt Bose® amplifier and six meticulously



▲ BOSE® SPEAKERS

The Premium Music System, standard on the 3.0CL, features a 100-watt Bose® amplifier and six superb Bose® speakers, precisely equalized and located to reproduce the entire spectrum of musical frequencies.



▲ POWER GLASS MOONROOF

To increase the sensory pleasures of driving on a beautiful day, the CL features a power glass moonroof as standard equipment. The dark-tinted, privacy-glass panel glides open at the touch of a button, or can be tilted up to enhance cabin ventilation. An integrated opaque shade is also included to block sunlight completely.



The spacious, harmonious cabin features carefully coordinated shapes and materials. Acura 3.0CL with available Premium Package shown with Quartz leather-appointed interior.

IN EVERY SYSTEM,
THE ACURA CL DISPLAYS
REMARKABLE
ATTENTION TO DETAIL.



▲ A SPECIAL HYDRAULIC ENGINE
MOUNT on automatic-transmission
CL models enhances comfort
by minimizing engine vibrations.



▲ TO AID CLIMATE-CONTROL
PERFORMANCE and reduce glare,
the CL utilizes innovative
super-heat-rejecting solar green
glass on all windows.



▲ AERODYNAMIC, ONE-PIECE DOOR
MIRRORS reduce turbulence
and are specially designed to
direct water away from the
window glass during rainstorms.



ACURA CL [PERFORMANCE]

For all of its readily apparent style and
rarefied comfort, the Acura CL is much
more than a sumptuous luxury coupe.
It is also a compelling driver's car, one

PROPELLED WITH THE EFFORTLESS
POWER OF ADVANCED VTEC ENGINES, BOTH
ACURA CL MODELS DELIVER AN
UNFORGETTABLE DRIVING EXPERIENCE.



▲ 2.2-LITER VTEC ENGINE
Like the 3.0-liter V-6 in the 3.0CL, the 145-hp,
2.2-liter, 4-cylinder engine in the 2.2CL uses
the Variable Valve Timing and Lift Electronic
Control (VTEC) system to combine abundant
low rpm torque with high rpm power.

born of a proud racing heritage and
painstakingly designed to electrify the
soul on the open road.

Every component of the CL has
been tuned to deliver an unforgettable
driving experience. Included in the CL
coupe's portfolio of high-performance
technologies is a pair of state-of-the-art,
aluminum engines: a 145-horsepower
2.2-liter 4-cylinder and a lightweight
and compact, 200-horsepower, 3.0-liter
V-6. Inspired by proven Formula One
racing designs, these powerplants use a
4-valve-per-cylinder configuration and
our innovative VTEC engine system to

combine excellent power and response
with remarkable smoothness and fuel
efficiency. And because the advanced,
24-valve, 3.0-liter V-6 engine is designed
with platinum-tipped spark plugs and
a long-life timing belt, it requires no
tune-ups for 100,000 miles.*

A 5-speed manual transmission,
standard on the 2.2CL, is engineered to
suit the special output characteristics of
the 16-valve VTEC engine, while the
electronically controlled 4-speed auto-
matic transmission – optional on the
2.2CL and standard on the 3.0CL – is
equipped with the Grade Logic Control
System for smooth shifting action on
steep inclines and twisty roads.

From the stability and reassuring
traction of a front-wheel-drive layout
to a cockpit whose carefully contoured
controls fall readily to hand, the CL is
a sporting coupe conceived to meet the
challenges of spirited driving with rare
prowess and flair.

*See your dealer for details.



▲ 16-INCH ALUMINUM WHEELS
AND HIGH-PERFORMANCE TIRES

Outstanding performance and functional good
looks are provided by standard 16-inch wheels
and tires. The lightweight, aluminum-alloy
wheels feature spoke designs specific to each
CL model and are fitted with high-performance
205/55 R16 V-rated All Season tires specially
developed to help combine quick handling with
a smooth and comfortable ride.



With its advanced VTEC engine and racing-inspired 4-wheel independent double-wishbone suspension, the CL is designed for driving enthusiasts. Acura 3.0CL shown in Inza Red Pearl.

The advanced systems and innovative technologies in our luxury performance automobiles exist to elevate the driving experience to the highest possible levels

CL includes a power-assisted, rotary-valve rack-and-pinion steering system. By automatically varying the amount of power assist, this innovative system delivers light, nearly effortless steering in challenging parking maneuvers and excellent road feel at higher speeds.

Yet this nearly obsessive standard of engineering is used not simply for sheer performance, but also to ensure that the CL is a reassuringly secure and durable automobile. A dual front air bag Supplemental Restraint System (SRS) is standard, as are 4-wheel disc brakes equipped with an Acura-designed Anti-Lock Braking System (ABS). The rigid, computer-designed unit-body structure is crafted with front and rear crumple zones for additional protection in the event of an impact, while the body shell wears a series of specially developed primer coatings designed to produce a glass-smooth exterior finish every bit as long-lasting as it is beautiful.



▲ PIN-GUIDE SYSTEM

To reduce road and wind noise, and to ensure a tight seal for the life of the vehicle, the door windows of the CL coupe are equipped with an innovative pin-guide system that anchors the window glass securely against the sash.

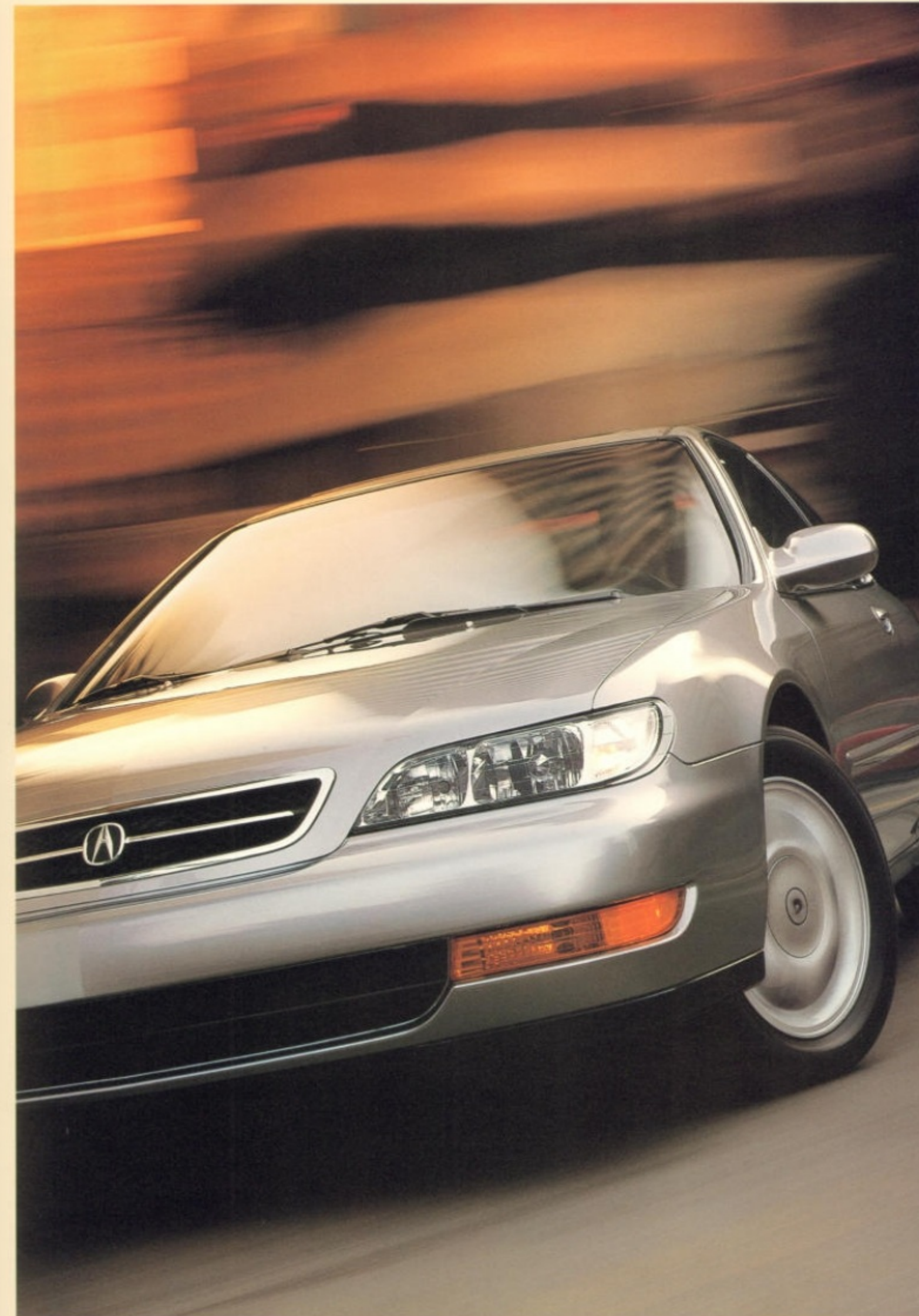


▲ DOUBLE-WISHBONE
SUSPENSION SYSTEM

Like the similar configuration on the Acura NSX sports car, the race-bred, 4-wheel independent double-wishbone suspension on the CL provides precise responses to steering input, superb highway tracking and exceptional handling poise on twisting roads.

In the CL, this firm commitment to engineering excellence has created a sporting coupe of remarkable abilities and sophistication. The suspension, to cite one example, is a racing-inspired, 4-wheel independent double-wishbone design that blends precise roadhandling control with smooth and forgiving ride manners. Complementing this advanced suspension are 16-inch aluminum-alloy wheels wearing V-rated 205/55 R16 All Season Michelin MXV4 tires.

To bring this remarkable chassis to life in the driver's hands, the Acura

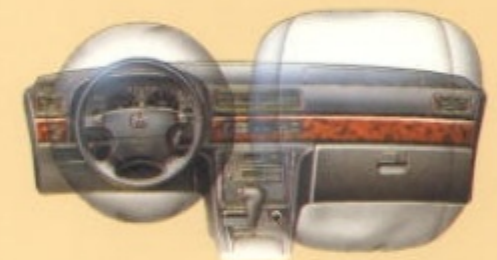


SYSTEMS CAREFULLY
ENGINEERED FOR
SAFETY, STRENGTH AND
PEACE OF MIND.



▲ FRONT AND REAR CRUMPLE

ZONES are designed to deform progressively in an impact, helping to protect the passenger cabin from collision forces.



▲ STANDARD DUAL FRONT AIR BAGS

deploy in a mere fraction of a second (and then deflate) to help minimize injury in the event of a severe frontal collision.



▲ FOR ADDED PROTECTION

in the event of a side impact, the CL structure incorporates high-strength steel door beams.



As groundbreaking as it is beautiful, the CL is the first Acura to be designed, engineered and manufactured in the United States. Acura 2.2CL shown in Flamenco Black Pearl.



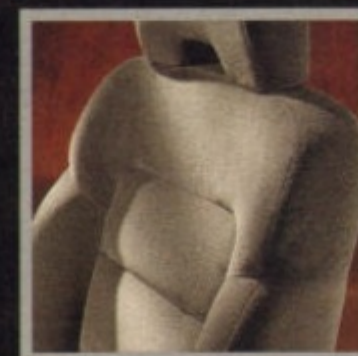
QUARTZ LEATHER SEAT



CHARCOAL LEATHER SEAT



QUARTZ MOQUETTE SEAT



CHARCOAL MOQUETTE SEAT

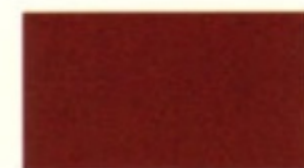
3.0 CL	
Exterior Color	Interior Color*
Cypress Green Pearl	Quartz
Inza Red Pearl	Charcoal
Cyclone Blue Metallic	Charcoal
Primrose Mist Metallic	Quartz
Flamenco Black Pearl	Charcoal
Frost White	Quartz

2.2 CL	
Exterior Color	Interior Color*
Cypress Green Pearl	Quartz
Inza Red Pearl	Charcoal
Cyclone Blue Metallic	Charcoal
Primrose Mist Metallic	Quartz
Flamenco Black Pearl	Charcoal
Frost White	Quartz

*Moquette or leather-appointed upholstery available



CYPRESS GREEN PEARL



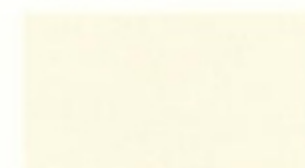
INZA RED PEARL



CYCLONE BLUE METALLIC



PRIMROSE MIST METALLIC



FROST WHITE



FLAMENCO BLACK PEARL

Advanced engineering and a comprehensive list of luxury features ensure that the Acura CL sets the standard in the luxury sports coupe class.

ENGINEERING



▲ A single assembly houses the CL headlights, improving fit and creating a smooth appearance.

INDUCTION SYSTEM – Multi-point Programmed Fuel Injection (PGM-FI)

ENGINE BLOCK – Aluminum alloy

CYLINDER HEAD – Aluminum alloy with 4 valves per cylinder and VTEC

EMISSION CONTROL – 3-way catalyst

POWERTRAIN – Transverse front engine/front-wheel drive

	2.2CL	3.0CL
ENGINE TYPE	2.2-liter, 16-valve, SOHC, inline 4-cylinder with VTEC	3.0-liter, 24-valve, SOHC, V-6 with VTEC
HORSEPOWER, SAE NET	145 hp @ 5500 rpm	200 hp @ 5500 rpm
TORQUE, SAE NET	147 lbs-ft @ 4500 rpm	195 lbs-ft @ 4700 rpm
REDLINE	6300 rpm	6300 rpm
FUEL CUTOFF	6500 rpm	6600 rpm
BORE & STROKE	3.35 in x 3.74 in (85.0 mm x 95.0 mm)	3.39 in x 3.39 in (86.0 mm x 86.0 mm)
DISPLACEMENT	131.6 cu in (2156 cc)	182.9 cu in (2997 cc)
COMPRESSION RATIO	8.8:1	9.4:1
VALVETRAIN	16-valve SOHC with Variable Valve Timing and Lift Electronic Control (VTEC) system	24-valve SOHC with Variable Valve Timing and Lift Electronic Control (VTEC) system
IGNITION SYSTEM	Full electronic ignition	Full electronic direct ignition
ALTERNATOR	12V, 90 amp max	12V, 100 amp max
BATTERY	12V, 65 amp	12V, 72 amp



TRANSMISSIONS – 5-speed manual transmission; 4-speed automatic transmission with Grade Logic Control

Ratios (:1)	2.2CL 5-speed manual	2.2CL 4-speed automatic	3.0CL 4-speed automatic
1st	3.285	2.736	2.534
2nd	1.807	1.483	1.502
3rd	1.193	1.026	0.947
4th	0.903	0.674	0.632
5th	0.685	–	–
Reverse	3.000	2.047	1.846
Final Drive	4.266	4.285	4.200

SEATING & TRIM

- Leather-wrapped steering wheel
- Moquette cloth interior trim*
- 8-way power driver's seat*
- Power walk-in driver's seat with Autoposition feature*
- 6-way power driver's seat*
- Manual walk-in passenger seat
- Driver's seat manual lumbar adjustment
- Passenger's seatback pocket
- Center console with armrest and 9-CD storage capability
- Adjustable front headrests
- Rear headrests (fixed)
- Rear seat center armrest (folding)
- Trunk pass-through
- Simulated wood trim (instrument panel)

*Not available with Premium Package
*Available on 3.0CL *Available on 2.2CL

BODY / SUSPENSION / CHASSIS

BODY TYPE – Unit body

FRONT SUSPENSION – Independent double-wishbone

REAR SUSPENSION – Independent double-wishbone

SHOCK ABSORBERS – NWS-type (New Wide Setting)

STEERING TYPE – Rotary-valve, variable-assist, power rack-and-pinion

STEERING WHEEL TURNS, LOCK-TO-LOCK – 3.0

TURNING DIAMETER, CURB-TO-CURB – 39.04 ft (11.9 m)

TIRES – P205/55 R16 89V radial tires

ANTI-LOCK BRAKING SYSTEM (ABS) – Acura-designed system with 4 wheel-speed sensors and electronic/hydraulic control unit

PARKING BRAKE – Separate parking caliper

	2.2CL	3.0CL
WHEELS	6 J x 16 (6-spoke)	6 J x 16 (5-spoke)
STEERING RATIO	16.3:1	17.1:1
STABILIZER BARS		
Front diameter	27.2 mm (1.07 in) hollow	25.0 mm (0.98 in) solid
Rear diameter	16.0 mm (0.63 in) solid	16.0 mm (0.63 in) solid
BRAKING SYSTEM		
Front discs	Ventilated, 10.24 in (260 mm) diameter, 0.91 in (23 mm) rotor thickness	Ventilated, 11.1 in (282 mm) diameter, 0.98 in (25 mm) rotor thickness
Rear discs	Solid, 10.24 in (260 mm) diameter, 0.39 in (10 mm) rotor thickness	Solid, 10.24 in (260 mm) diameter, 0.39 in (10 mm) rotor thickness
TOTAL SWEEP AREA	363.9 sq in (2347 cm ²)	370.1 sq in (2389 cm ²)



COMFORT & CONVENIENCE

- Automatic Climate Control air conditioning system
- Tilt steering column
- Cruise control
- Power windows, door locks
- Power moonroof with tilt feature and sunshade
- Heated door mirrors*
- Acura Music System with AM/FM stereo, in-dash CD player and six speakers
- Acura/Bose® Premium Music System with AM/FM stereo, in-dash CD player and six speakers*
- Keyless entry system
- Overhead map lights

*Available on 3.0CL



◀ Dual map lights in the overhead console add a touch of convenience and make it easy to check route directions at night.

EXTERIOR FEATURES

- Body-colored front and rear bumpers
- Body-colored door mirrors
- Power-operated door mirrors
- Body-colored side moldings
- Heat-rejecting green-tinted solar glass
- Printed radio antenna (rear glass)
- Rear window defroster with timer
- Cast-aluminum alloy wheels
- P205/55 R16 89V radial tires
- Galvanized body panels
- 3-coat, 3-bake paint
- Front mud guards
- Dual stainless steel exhaust tips



◀ To help the driver focus on the road ahead, the standard cruise control system is operated using controls on the steering wheel.

SAFETY FEATURES

- Anti-Lock Braking System (ABS)
- Driver's and front passenger's air bag Supplemental Restraint System (SRS)
- Side-impact door beams
- Side-intrusion hip pads
- Side-intrusion shoulder pads
- 3-point outboard seat belts (ALR/ELR)
- Rear seat center lap belt
- 5-mph bumpers (front/rear)
- Front and rear crumple zones
- Theft-deterrent system

PREMIUM PACKAGE

- Leather-appointed seats and door panels
- Driver's seatback pocket
- Heated front seats (3.0CL only)

FUEL ECONOMY

RECOMMENDED FUEL – Unleaded regular; 87 octane

EPA ESTIMATED FUEL MILEAGE, CITY/HIGHWAY*

2.2CL Automatic – 23/29

2.2CL Manual – 25/31

3.0CL – Figures not available at time of printing

*Use for comparison purposes only. California figures are the same. Your mileage may vary.



◀ The 3.0CL with available Premium Package includes heated front seats, which make driving on cold mornings nearly as cozy as sitting beside a warm fireplace.

CAPACITIES

FUEL TANK – 17.2 U.S. gallons (65 liters)

PASSENGER VOLUME – 84.7 cu ft

CARGO VOLUME (TRUNK) – 11.98 cu ft

TOTAL VOLUME – 96.68 cu ft

	2.2CL	3.0CL
CRANKCASE	5.8 U.S. quarts (5.6 liters) refill capacity including filter	4.6 U.S. quarts (4.4 liters) refill capacity including filter
COOLING SYSTEM	4-speed automatic: 7.2 U.S. quarts (6.8 liters) 5-speed manual: 7.3 U.S. quarts (6.9 liters)	4-speed automatic: 9.3 U.S. quarts (8.8 liters)

INTERIOR DIMENSIONS

FRONT DIMENSIONS

Head room	37.4 in (951 mm)
Leg room	42.9 in (1090 mm)
Hip room	51.6 in (1310 mm)
Shoulder room	54.4 in (1383 mm)

REAR DIMENSIONS

Head room	35.9 in (913 mm)
Leg room	31.0 in (788 mm)
Hip room	47.6 in (1210 mm)
Shoulder room	53.1 in (1349 mm)



◀ Convenient, lockable remote releases allow the fuel-filler door and the trunk lid to be opened from the driver's seat.

EXTERIOR DIMENSIONS

Wheelbase	106.9 in (2715 mm)
Track, front	59.6 in (1515 mm)
Track, rear	59.1 in (1500 mm)
Overall length	190.0 in (4827 mm)
Overall width	70.1 in (1780 mm)
Height (unladen)	54.7 in (1390 mm)
Minimum ground clearance (laden)	4.33 in (110 mm)
Curb weight:	
2.2CL Automatic	3064 lbs (1390 kg)
2.2CL Manual	3009 lbs (1365 kg)
3.0CL	3219 lbs (1460 kg)
Weight distribution, (%) front/rear:	
2.2CL	63/37
3.0CL	64/36



◀ To personalize and enhance the racy look of your Acura CL, your dealer offers these polished 6-spoke alloy wheels—carefully tested for superb performance and durability.

ACCESSORIES

CD changer	Rear wing spoiler
Cassette player	Nose mask, full and half
CD changer magazine	Fog lights
Moonroof visor	Gold emblem kit
Cargo net	Ski sleeve
Fenderwell trim	Splash guards
Floor mats	Cargo mat
Car cover	Engine block heater
Wheel locks	Alloy wheels
Leather-wrapped shift knob, for both manual and automatic	Simulated wood lower dash trim



◀ A six-disc, trunk-mounted CD changer is available to improve the performance and convenience of the already impressive standard Acura Music System.



◀ To enhance the appearance of the CL, buyers can choose from such high-quality accessories as a contoured rear-wing spoiler and a handsome gold emblem kit.

WARRANTIES

VEHICLE – 4-year/50,000-mile limited warranty

OUTER BODY RUST-THROUGH – 5-year/unlimited-mile limited warranty

ROADSIDE ASSISTANCE (TLC) – 4-year/50,000-miles

ACCESSORIES – 4-year/50,000-mile limited warranty*

3.0-LITER, V-6 ENGINE – No tune-ups required for 100,000 miles

Ordinary maintenance items or adjustments, parts subject to normal wear and replacement, and certain other items are excluded. See your Acura dealer for the terms and conditions of limited warranties.

*When installed at time of new vehicle delivery

ACURA ROADSIDE ASSISTANCE

24-hour Roadside Assistance

24-hour emergency towing

Acura Concierge Service

Trip interruption expense benefits

Computerized trip routing/map services

Emergency lockout service

See your Acura dealer for details about the privileges of ownership, which include Total Luxury Care™ (TLC), Acura Roadside Assistance and Concierge Service. Total Luxury Care is a trademark of Honda Motor Co., Ltd.



Acura Care provides coverage beyond the initial warranty period. This includes 24-hour Roadside Assistance, in addition to other plan benefits. Ask your dealer for details.





THE ACURA TOTAL LUXURY CARE (TLC) PROGRAM:
A PORTFOLIO OF EXCLUSIVE PRIVILEGES, DESIGNED TO MAKE
OWNING YOUR ACURA AS ENJOYABLE AS POSSIBLE.



Many automakers think their job is over when you drive your new car off the showroom floor. At Acura, we know our job is just beginning. Because the experience of owning a world-class automobile should involve much more than driving it – regardless of how enjoyable it is to drive. Acura Total Luxury Care (TLC) is an essential part of this philosophy. The TLC program is a wide range of complimentary services, including 24-hour Roadside Assistance and emergency towing, Acura Concierge Service, travel planning assistance and other services, all designed to provide Acura owners and their families the highest levels of customer support and peace of mind.

It goes without saying that every Acura dealer is dedicated to treating you with the utmost courtesy and respect. If it is necessary for your Acura automobile to remain overnight for warranty work, a loaner automobile will be provided, free of charge, wherever possible. In the unlikely event that a needed part is not in stock, a computerized parts network and nationwide warehouse system will rush the part to your Acura dealer. Every Acura automobile is covered with a 4-year or 50,000-mile limited warranty, and the optional Acura Care program provides service and repair coverage beyond the initial warranty period.



©1996 Acura Division of American Honda Motor Co., Inc. Acura, NSX, RL, SLX, TL, CL, Integra and VTEC are trademarks of Honda Motor Co., Ltd. Specifications, features, illustrations and equipment shown in this catalog are based upon the latest available information at the time of publication. Although descriptions are believed to be correct, accuracy cannot be guaranteed. American Honda Motor Co., Inc., reserves the right to make changes at any time, without notice or obligation, in colors, specifications, accessories, materials and models. Some vehicles are shown with optional equipment. See the Acura CL Accessories brochure for a full list of optional equipment. Bose® is a registered trademark of Bose Corporation. Covered by patent rights issued and/or pending. Dolby is a registered trademark of Dolby Laboratories. Total Luxury Care™ is a trademark of Honda Motor Co., Ltd. Acura Roadside Assistance services provided through Cross Country Motor Club, Inc., Boston, MA 02155, except in Alaska, California, Hawaii, Oregon, Wisconsin and Wyoming, where services are provided through Cross Country Motor Club of California, Inc., Boston, MA 02155. Acura reserves the right to limit services or reimbursements to an owner or driver when, in the judgment of Acura, the claims become excessive in frequency or type of occurrence. Acura also reserves the right to alter or withdraw the Acura Roadside Assistance Program or any other part of the Acura TLC Program, at any time without notice. Please "Tread Lightly!" on public and private land. Make an intelligent decision. Buckle up. Call 1-800-TO-ACURA for the dealer nearest you. Printed in the U.S.A. 1996 7996 E4705

