



DRIVING IS NOT A SPECTATOR SPORT. THE MERCEDES-BENZ "SPORT" LINE

S P O R T



Monochromatic body trim



205/60R15 performance tires



Sport-tuned suspension



THE C280 SPORT

DRIVING IS A PASSION. One look at a C280 Sport tells you this Mercedes is not merely a luxury sedan. One drive and you'll know it's a serious driver's car. Grab the sport shift knob, press the throttle and its 6-cylinder engine taps into 195 hp and 199 lb-ft of torque. Turn the leather-trimmed sport steering wheel into a

curve and you'll feel the response of its faster-ratio steering, firmer stabilizer bars and shock absorbers, and low-profile tires on 7-inch wide alloys. Feel the leather upholstery: the sport front seats are bolstered for spirited cornering. Finally, one look at the price tells you this: the C280 Sport is a serious bargain.



Sport steering wheel with telescoping column



Sport-style interior trim and shift knob



Leather upholstery and sport front seats



Contoured front air dam



235/45ZR17 performance tires



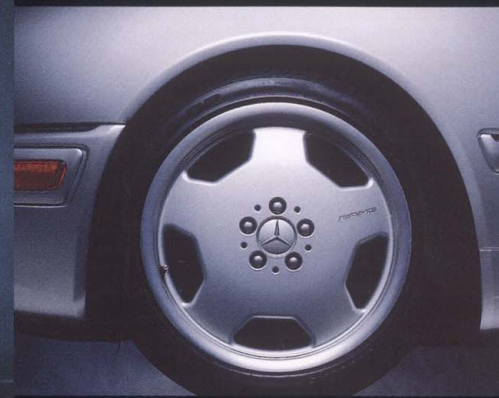
Side sill skirts



THE E420 SPORT



Sculpted rear apron



17-inch monoblock alloy wheels



Projector-beam front foglamps

DRIVING IS A STATEMENT. How do you enhance the sensuous shape of the new E-Class? How do you add to the handling precision of its new rack-and-pinion steering? The answer, in brief, is pictured here: the 1997 E420 Sport, available in Spring of 1996. Consider the performance sedan credentials it comes with: a

275-hp 32-valve all-alloy V-8 and a new driver-adaptive 5-speed electronic automatic transmission. Consider, too, the performance sedan shape it comes in: aerodynamic bodywork at the front, sides and rear. Low-profile Z-rated tires on 17-inch alloys. Projector-beam front foglamps. Now consider this: a test drive.



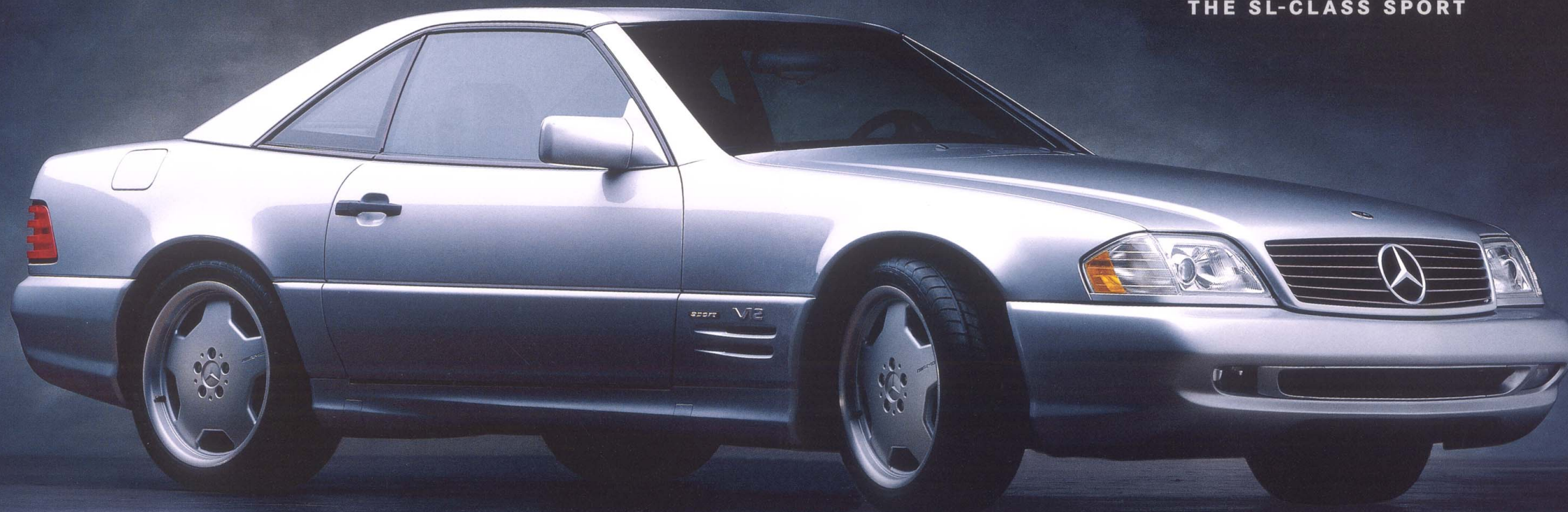
Modified front air dam with mesh grille



Z-rated 275/35 rear and 245/40 front tires



Extended rear apron



THE SL-CLASS SPORT

DRIVING IS AN ART. The new SL-Class Sport models reflect the unique legacy of the Mercedes-Benz SL: not just a sports car, but a work of automotive art. Each of these powerful automobiles uses advanced technology to promote the cause of high performance. An SL320, SL500 or SL600 (shown here) can be quickly

transformed from a sensuous coupe to a sporty roadster with a convertible soft top – while preserving the safety engineering of a Mercedes-Benz. The SL Sport models feature distinctive lower bodywork and ultra-low-profile Z-rated tires on 18-inch alloy wheels. Giving these SLs a look that is simply awe-inspiring.



Sport shift knob (SL600 shown)



18-inch monoblock alloy wheels



Sculpted side sill skirts



Mercedes-Benz of North America, Inc.

One Mercedes Drive

Montvale, NJ 07645

©1996 Mercedes-Benz of North America, Inc.
Member of the Daimler-Benz Group
Marketing Communications MC-96-384-500

All illustrations and specifications contained in this brochure are based on the latest product information available at the time of publication. Mercedes-

Benz reserves the right to make changes at any time, without notice, in colors, materials, equipment, specifications and models. Any variations in colors shown are due to reproduction variations of the printing process. Illustrations may include test situations. Some automobiles pictured may include non-U.S. equipment. Some models may

be shown with optional equipment. C280 Sport shown with optional sunroof and metallic paint. E420 Sport shown with optional sunroof. SL600 Sport model shown.

Printed in U.S.A.