


1 9 9 7

TACOMA



P r o d u c t S o u r c e

 **TOYOTA**

Table of Contents

Model Line-Up	2
Standard Features	3
Standard/Optional Features	7
Specifications.....	11
Features and Benefits.....	12
Safety	12
Performance.....	14
Comfort and Convenience	17
Styling.....	19
Quality/Dependability/Reliability and Value	21
Glossary	23

Model Line-Up



New for 1997

All Models

- New models
 - Tacoma 4x2 Value Edition 5M (7103)
 - Tacoma 4x2 Value Edition 4A (7104)
- Deleted models
 - Tacoma 4x2 5M (7100)
 - Tacoma 4x2 4ECT (7102)
- The front end of the Tacoma 4x2 has been freshened with a new radiator grille, and headlamp and clearance lamp
- Defroster-linked air conditioning operation
- Many optional packages have been revised for 1997 (See package listings on page 9)
- Center console box added to Bucket Seat {BU} option (except 4x2 regular cab)
- Deletion of several option packages ({LT},{SW},{SY},{SZ},{DY}, and {OR})
- New exterior color
 - Lavender Steel Metallic (926)
- Deleted exterior color
 - Pewter Pearl (196)

4x4 Models

- Engine improvements (4-cylinder)
 - Toyota Direct Ignition replaces the conventional distributor ignition system
 - Sequential Multiport Fuel Injection (SFI) replaces the 2-group type Multiport Fuel Injection (MFI)

Regular Cab Models

- The optional {SX} package has been revised to include 31" tires, Chrome Package, and console box for the 4x4 regular cab
- New optional Value Edition packages {PQ} and {PY} for 4x2 regular cab models, and {PV} for 4x4 regular cab models

Xtracab Models

- Optional rear differential lock on Xtracab 4-cylinder 5M and V6 models
- Optional front cloth bucket seats with headrests and center console box {BU} now available on Xtracab models

SR5 Models

- Revised SR5 stripe and tailgate logo
- Standard sliding rear window with gray privacy glass

Body Styles and Trim Levels

Body Style	Trim Level	Trans.	Displacement	Cyl.	bhp	Model #
4x2	Value Edition	5M	2.4 liter	4	142	7103
		4A	2.4 liter	4	142	7104
	Xtracab	5M	2.4 liter	4	142	7113
		4A	2.4 liter	4	142	7114
	Xtracab V6	5M	3.4 liter	6	190	7153
		4ECT	3.4 liter	6	190	7154
4x4	Tacoma	5M	2.7 liter	4	150	7503
		4ECT	2.7 liter	4	150	7504
		5M/V6	3.4 liter	6	190	7523
	Xtracab	5M	2.7 liter	4	150	7513
		4ECT	2.7 liter	4	150	7514
	Xtracab V6	5M	3.4 liter	6	190	7553
		4ECT	3.4 liter	6	190	7554
	Xtracab SR5 V6	5M	3.4 liter	6	190	7557
		4ECT	3.4 liter	6	190	7558

Standard Features

Tacoma 4x2 Regular Cab Value Edition

Mechanical

- 2.4-liter 4-cylinder DOHC* 16-valve EFI engine
- Rear-wheel drive
- 5-speed manual overdrive transmission
- Independent double-wishbone front suspension with coil springs and stabilizer bar
- Leaf spring rear suspension
- 4-wheel hydraulic shock absorbers
- Rack-and-pinion steering
- Power-assisted ventilated front disc/rear drum brakes
- Rear brake Load-Sensing Proportioning Valve (LSPV)
- P195/75R14 All-season steel belted radial tires
- Full-size spare tire

Exterior

- Aerodynamic rectangular sealed-beam halogen headlamps
- Argent grille
- Black painted front bumper
- Gray valance panel
- Black-out windshield molding
- Dual fixed black mirrors
- Tinted safety glass
- Integrated rear Center High-Mount Stop Lamp (CHMSL)
- Anti-chip protector in front of rear wheel wells
- Full wheel covers
- Locking fuel lid with cap holder
- 6-ft. double-wall bed with 4 tie-down hooks
- Emblems (front and rear): Toyota logo; Toyota name

Interior

- Tilt-forward cloth bench seat
- Head restraints in outboard positions
- Full-door trim with cloth insert



Model shown may have optional equipment

- Dual door armrests
- Dual door map pockets
- Dual vinyl sun visors
- Vinyl headliner
- Urethane steering wheel (2-spoke)
- Day/night rearview mirror
- Dual cup holder
- Driver-side footrest
- Full cut-pile carpeting
- Color-keyed instrument panel
- Instrumentation: electronic analog speedometer, odometer; coolant temperature and fuel level gauges
- Warning buzzers: headlamps-on, and key-in ignition
- One-touch door locks
- Windshield wipers with mist control
- Cigarette lighter
- Passenger-side assist grip

Safety**

- Driver-side air bag Supplemental Restraint System (SRS)
- Seatbelts
 - Driver: 3-point ELR¹
 - Outboard passenger: 3-point ELR/ALR¹
 - Center passenger: 2-point lap belt
- Energy-absorbing steering wheel and column
- Side-door beams

* Marketed as Twin-Cam

** See "Safety" section beginning on page 12 for additional information

¹ With adjustable shoulder belt anchor

Standard Features

Tacoma 4x2 Xtracab Differences vs Tacoma 4x2 Value Edition

Mechanical

- P215/70R14 All-season steel belted radial tires

Exterior

- Gray metallic grille
- Black painted rear bumper

Interior

- 60/40 split-folding front bench seat
- Forward-facing rear jump seats with 3-point seatbelts
- Height-adjustable front cloth head restraints
- Rear-passenger entry/exit device
- Tilt-out rear quarter windows
- Rear folding table for child seat installation/cup holder

V6 Model Adds:

- 3.4-liter V6 DOHC* 24-valve EFI engine
- Power-assisted rack-and-pinion steering
- Emblem (rear): V6



Model shown may have optional equipment

* Marketed as Four-Cam

Standard Features

Tacoma 4x4 Regular Cab Differences vs Tacoma 4x2 Value Edition

Mechanical

- 2.7-liter 4-cylinder DOHC* 16-valve EFI engine with balance shafts
- Toyota Direct Ignition (Distributorless)
- Sequential Multiport Fuel Injection (SFI)
- Part-time 4-wheel drive
- 2-speed transfer case with manual locking hubs
- Power-assisted rack-and-pinion steering
- P225/75R15 All-season steel belted radial tires
- Protective skid plates:
 - Front suspension
 - Transfer case
 - Fuel tank

V6 Model Adds:

- 3.4-liter V6 DOHC** 24-valve EFI engine
- Front and rear gas shock absorbers
- Emblem (rear): V6

Exterior

- Rectangular sealed-beam halogen headlamps
- 6.0 x 15 styled-steel wheels
- Front and rear mudguards
- Black painted rear bumper
- Front tow hook

Interior

- 4.5 quart windshield washer tank
- Driver-side assist grip (1)
- Passenger-side assist grips (2)

Tacoma 4x4 Xtracab Differences vs Tacoma 4x2 Xtracab

Mechanical

- 2.7-liter 4-cylinder DOHC* 16-valve EFI engine with balance shafts
- Toyota Direct Ignition (Distributorless)
- Sequential Multiport Fuel Injection (SFI)
- Part-time 4-wheel drive
- 2-speed transfer case with manual locking hubs
- Power-assisted rack-and-pinion steering
- P225/75R15 All-season steel-belted radial tires
- Protective skid plates:
 - Front suspension
 - Transfer case
 - Fuel tank

V6 Model Adds:

- 3.4-liter V6 DOHC** 24-valve EFI engine
- Front and rear gas shock absorbers
- Emblem (rear): V6

Exterior

- Rectangular sealed-beam halogen headlamps
- 6.0 x 15 styled-steel wheels
- Front and rear mudguards
- Front tow hook

Interior

- 4.5 quart windshield washer tank
- Driver-side assist grip (1)
- Passenger-side assist grips (2)

* Marketed as Twin-Cam

** Marketed as Four-Cam

Standard Features

Tacoma 4x4 Xtracab SR5 V6 Differences vs Tacoma 4x4 Xtracab

Mechanical

- 3.4-liter V6 DOHC* 24-valve EFI engine
- 4WDemand
- Front and rear gas shock absorbers

Exterior

- 7.0 x 15 aluminum alloy wheels
- Chrome Package: front and rear bumpers, grille and trim
- SR5 V6 stripes and tailgate logos

Interior

- Sport bucket seats:
 - 6-way adjustable driver
 - 4-way adjustable passenger
- Front seat fore and aft adjustable head restraints

- SR5 cloth seats and door trim
- Dual sun visors with passenger-side vanity mirror
- Instrumentation: tachometer, tripmeter and low fuel warning light
- Sliding rear window
- Gray privacy glass
- Tilt steering wheel
- Variable intermittent wipers
- Digital quartz clock
- Front map lights
- Illuminated cigarette lighter
- Deluxe AM/FM ETR/Cassette with 4 speakers



1996 model shown; may have optional equipment

* Marketed as Four-Cam

Standard/Optional Features

Mechanical

	4x2 REG CAB VALUE ED.	4x2 XTRACAB/ XTRACAB V6	4x4 REG CAB 4-CYL / V6	4x4 XTRACAB/ XTRACAB V6	4x4 XTRACAB SR5 V6
• California emissions {CA}	.O	.O	.O	.O	.O
• 48-state emissions {RE}	.O	.O	.O	.O	.O
• 2.4-liter 4-cylinder DOHC* 16-valve EFI engine	.S	.S/NA	.NA	.NA	.NA
• 2.7-liter 4-cylinder DOHC* 16-valve EFI engine w/ balance shafts	.NA	.NA	.S/NA	.S/NA	.NA
• 3.4-liter V6 DOHC** 24-valve EFI engine	.NA	.NA/S	.NA/S	.NA/S	.S
• Toyota Direct Ignition (Distributorless)	.NA	.NA/S	.S	.S	.S
• Sequential Multiport Fuel Injection (SFI)	.NA	.NA/S	.S	.S	.S
• 2-speed transfer case with manual locking hubs	.NA	.NA	.S	.S	.NA
• 4WDemand {FD}	.NA	.NA	.O	.O	.S
• Rear Differential Lock {DL}	.NA	.NA	.O†/O	.O†/O	.O
• Hi-4 Selector Switch {FB}	.NA	.NA	.NA	.NA	.O ¹
• Rear-wheel drive	.S	.S	.NA	.NA	.NA
• Part-time 4-wheel drive	.NA	.NA	.S	.S	.S
• 5-speed manual overdrive transmission	.S	.S	.S	.S	.S
• 4-speed automatic overdrive transmission	.O	.O/NA	.NA	.NA	.NA
• 4-speed electronically controlled automatic overdrive transmission (4ECT)	.NA	.NA/O	.O/NA	.O	.O
• Independent double-wishbone front suspension with coil springs and stabilizer bar	.S	.S	.S	.S	.S
• Leaf spring rear suspension	.S	.S	.S	.S	.S
• 4-wheel hydraulic shock absorbers	.S	.S	.S/NA	.S/NA	.NA
• Front and rear gas shock absorbers	.NA	.NA	.O ^{2,3} /S	.O ² /S	.S
• Rack-and-pinion steering	.S	.S/NA	.NA	.NA	.NA
• Power-assisted rack-and-pinion steering {PS}	.O ⁴	.O ⁵ /S	.S	.S	.S
• Power-assisted ventilated front disc/rear drum brakes	.S	.S	.S	.S	.S
• Rear brake Load-Sensing Proportioning Valve (LSPV)	.S	.S	.S	.S	.S
• 4-wheel Anti-lock Brake System (ABS) {AB}	.O ⁶	.O ⁶	.O	.O	.O
• P195/75R14 All-season steel belted radial tires	.S	.NA	.NA	.NA	.NA
• P215/70R14 All-season steel belted radial tires	.O ⁷	.S	.NA	.NA	.NA
• P225/75R15 All-season steel belted radial tires	.NA	.NA	.S	.S	.S
• 31" x 10.5" tires	.NA	.NA	.O ⁷	.O ⁷	.O ⁷
• Full-size spare tire	.S	.S	.S	.S	.S
• Spare tire lock {WI}	.A	.A	.A	.A	.A
• Protective skid plates: front suspension, transfer case and fuel tank	.NA	.NA	.S	.S	.S
• All-Weather Guard Equipment Package {CK}	.O	.O	.O	.O	.O

Exterior

• Aerodynamic rectangular sealed-beam halogen headlamps	.S	.S	.NA	.NA	.NA
• Rectangular sealed-beam halogen headlamps	.NA	.NA	.S	.S	.S
• Hood protector {HP}	.A	.A	.A	.A	.A
• Front end mask {KM}	.A	.A	.A	.A	.A
• Argent grille	.S	.NA	.S	.NA	.NA
• Gray metallic grille	.NA	.S	.NA	.S	.NA
• Chrome grille	.O ⁸	.O ⁸	.O ⁸	.O ⁸	.S
• Gray valance panel	.S	.S	.S	.S	.S
• Black painted front bumper	.S	.S	.S	.S	.NA
• Black painted rear bumper {EB}	.O ⁴ /A	.S	.S	.S	.NA
• Chrome front bumper	.O ⁸	.O ⁸	.O ⁸	.O ⁸	.S
• Chrome rear bumper {EC}	.O ⁸ /A	.O ⁸ /A	.O ⁸ /A	.O ⁸ /A	.S
• Tinted safety glass	.S	.S	.S	.S	.S
• Black-out windshield moldings	.S	.S	.S	.S	.S
• Running boards (painted) {RB}	.A	.A	.A	.A	.A
• Dual fixed black mirrors	.S	.S	.S	.S	.S
• Dual power chrome mirrors	.NA	.NA	.NA	.NA	.O ⁹
• Integrated rear Center High-Mount Stop Lamp (CHMSL)	.S	.S	.S	.S	.S

Legend

S Standard
O Optional
A Dealer/Port-Installed
NA Not Available
() Option Code

Notes:

- (DL) Includes push button activated locking rear differential and 4WDemand for non-SR5 V6 models
(CK) Includes rain channelled windshield molding, heavy-duty windshield wiper motor, 4.5 quart windshield washer tank (std. on 4x4), heavy-duty battery (std. on 4x4 4-cylinder, NA on 4x2 4-cylinder 5M), and heavy-duty starter (only on V6 4ECT 1.8 kw, and 4x4 4-cylinder 2.0 kw)
* Marketed as Twin-Cam
** Marketed as Four-Cam
† Manual transmission models only
1 Requires {CL} option
2 Included with {AL} and {AW} options
3 Included with {SX} option
4 Included in {PQ} option
5 Included with {LX} option
6 Requires power steering {PS} option
7 Included with {AW} option
8 Included with {CH} option
9 Included with {PO} option

Standard/Optional Features

Exterior (Cont'd)

	4x2 REG CAB VALUE ED.	4x2 XTRACAB/ XTRACAB V6	4x4 REG CAB 4-CYL / V6	4x4 XTRACAB/ XTRACAB V6	4x4 XTRACAB SR5 V6
• Full wheel covers	.S	.S	.NA	.NA	.NA
• Styled-steel wheels	.NA	.NA	.S	.S	.S
• Aluminum alloy wheels {AW}	.O	.O	.O	.O	.O
• Aluminum alloy wheels {AL}	.NA	.NA	.O	.O	.S
• Wheel locks (alloy) {WL}	.A	.A	.A	.A	.A
• Wheel locks (steel) {WS}	.A	.A	.A	.A	.A
• Front and rear mudguards	.NA	.NA	.S	.S	.S
• Anti-chip protector in front of rear wheel wells	.S	.S	.S	.S	.S
• Locking fuel lid with fuel cap holder	.S	.S	.S	.S	.S
• 6-ft. double-wall cargo bed	.S	.S	.S	.S	.S
• 4 cargo bed tie-down hooks	.S	.S	.S	.S	.S
• Bedliner {BL} (over-the-rail)	.A	.A	.A	.A	.A
• Bedliner {LU} (under-the-rail)	.A	.A	.A	.A	.A
• Bed mat	.A	.A	.A	.A	.A
• Cargo mat (DIO only)	.A	.A	.A	.A	.A
• Cargo net {GN}	.A	.A	.A	.A	.A
• Tonneau cover {BT}	.A	.A	.A	.A	.A
• Front tow hook	.NA	.NA	.S	.S	.S
• Towing hitch receiver {DH}	.NA	.NA	.A	.A	.A
• Trailer balls and ball mounts	.A	.A	.A	.A	.A
• Bodyside molding {BM}	.A	.A	.A	.A	.A
• Metallic paint {PX}	.O	.O	.O	.O	.O
• SR5 V6 stripes and tailgate logos	.NA	.NA	.NA	.NA	.S
• Emblems front and rear: Toyota logo/Toyota name	.S	.S	.S	.S	.S
• Emblem (rear): V6	.NA	.NA/S	.NA/S	.NA/S	.S
• Emblems side and rear: SR5	.NA	.NA	.NA	.NA	.S
• Emblems tailgate: SX	.NA	.NA	.O ³	.NA	.NA
• Emblems tailgate: LX	.NA	.O ⁵	.NA	.O ⁵	.NA
• Chrome Package {CH}	.O ¹⁰	.O ⁵	.O ³	.O ⁵	.S

Interior

• Tilt-forward cloth bench seat	.S	.NA	.S	.NA	.NA
• 60/40 split-folding front bench seat	.NA	.S	.NA	.S	.NA
• Sport bucket seats	.NA	.NA	.NA	.NA	.S ¹¹
• Bucket seats {BU}	.O	.O	.O ³	.O	.NA
• Rear-passenger entry/exit device	.NA	.S	.NA	.S	.S
• Forward-facing rear jump seats with 3-point seatbelts	.NA	.S	.NA	.S	.S
• Head restraints in front outboard seating positions	.S	.NA	.S	.NA	.NA
• Height adjustable front cloth head restraints	.O ¹²	.S	.O ^{3,12}	.S	.NA
• Front seat fore and aft adjustable cloth head restraints	.NA	.NA	.NA	.NA	.S
• Full door trim with cloth insert	.S	.S	.S	.S	.NA
• SR5 cloth seats and door trim	.NA	.NA	.NA	.NA	.S
• Dual door armrests	.S	.S	.S	.S	.S
• Dual door map pockets	.S	.S	.S	.S	.S
• Dual vinyl sun visors	.S	.S	.S	.S	.NA
• Dual sun visors with passenger-side vanity mirror	.NA	.O ⁵	.NA	.O ⁵	.S
• Day/night rearview mirror	.S	.S	.S	.S	.S
• Vinyl headliner	.S	.S	.S	.S	.S
• Center console box {SK}	.NA	.A	.A	.A	.NA
• Dual cup holder	.S	.S	.S	.S	.S
• Driver-side footrest	.S	.S	.S	.S	.S
• Carpeted floor mats, 2-piece {CT}	.A	.NA	.A	.NA	.NA
• Carpeted floor mats, 4-piece {CF}	.NA	.A	.NA	.A	.A
• Full cut-pile carpeting	.S	.S	.S	.S	.S

Legend

S Standard
O Optional
A Dealer/Port-
Installed
NA Not Available
{ } Option Code

Notes:

{AW} Includes aluminum wheels (4); (4x2): P215/70R14 tires; (4x4): 31" x 10.5" R15 tires, chrome wheel arch moldings, and gas shocks (std. on V6)
{AL} Includes aluminum alloy wheels, P225/75R15 tires, and gas shocks (std. on V6)
{CH} Includes chrome: front and rear bumpers, grille, trim
{BU} Includes cloth bucket seats with headrests, (cloth headrests std. on Xtracab), and center console box (center console not available on 4x2 regular cab)
3 Included with {SX} option
5 Included with {LX} option
10 Included with {PY} option
11 Includes 6-way adjustable driver's seat
12 Included with {BU} option

Standard/Optional Features

Interior (Cont'd)

	4x2 REG CAB VALUE ED.	4x2 XTRACAB/ XTRACAB V6	4x4 REG CAB 4-CYL / V6	4x4 XTRACAB/ XTRACAB V6	4x4 XTRACAB SR5 V6
• Instrumentation: electronic analog speedometer, odometer; coolant temperature and fuel level gauges	.S	.S	.S	.S	.S
• Tachometer {TA}	O13	O13	O13	O13	.S
• Tripmeter	O13	O13	O13	O13	.S
• Warning light: low fuel level	.NA	.NA	.NA	.NA	.S
• Warning buzzers: headlamps-on, and key-in-ignition	.S	.S	.S	.S	.S
• Color-keyed instrument panel	.S	.S	.S	.S	.S
• Sunroof {SR}	.NA	.O	.NA	.O	.O
• Tilt-out rear quarter windows	.NA	.S	.NA	.S	.S
• Sliding rear window {WR}	.O	O5,14	.O	O5,14	.S
• Gray privacy glass	.NA	O15	.NA	O15	.S
• Air conditioning (CFC-free) {AC}	O16/A	O5/A	O16/A	O5/A	O/A
• Power windows and door locks	O9	O9	O9	O9	O9
• One-touch door locks	.S	.S	.S	.S	.S
• Cruise control {CL}	O13,17	O13,17	O13,17	O13,17	O18
• Tilt steering wheel {TW}	O13	O13	O13	O13	.S
• Urethane steering wheel (2-spoke)	.S	.S	.S	.S	.S
• Mist-cycle windshield wipers	.S	.S	.S	.S	.S
• Variable intermittent windshield wipers	O19	O19	O19	O19	.S
• 4.5 qt windshield washer tank	.O	.O	.S	.S	.S
• Rear folding tray for child seat installation/cup holder	.NA	.S	.NA	.S	.S
• Driver-side assist grip (1)	.NA	.NA	.S	.S	.S
• Passenger-side assist grip (1)	.S	.S	.NA	.NA	.NA
• Passenger-side assist grips (2)	.NA	.NA	.S	.S	.S
• Lighting package	.NA	.NA	.NA	.NA	O9
• Digital quartz clock {DQ}	O13/A	O13/A	O13/A	O13/A	.S
• Front map lights	.NA	.NA	.NA	.NA	.S
• Cigarette lighter	.S	.S	.S	.S	S20
• Toyota Vehicle Intrusion Protection (V.I.P.) {V1}/V3	.A	.A	.A	.A	.A
• Keyless Entry {KE}	.A	.A	.A	.A	.A
• Power antenna {PA}	.NA	.NA	.NA	.NA	.O
• AM/FM ETR Radio with 2 speakers {R2}	.A	.A	.A	.A	.NA
• AM/FM ETR Radio with 2 speakers {RA}	O21	O21	O21	O21	.NA
• AM/FM ETR/Cassette with 2 speakers {B1}	.A	.A	.A	.A	.NA
• Deluxe AM/FM ETR/Cassette with 4 speakers {EX}	.NA	O5,21	.NA	O5,21	S21
• Midline AM/FM ETR/Cassette with Dolby®22, 2 speakers {E1}	.A	.A	.A	.A	A23
• Auto-Reverse Cassette Deck with Dolby®22 {P4}	.A	.A	.A	.A	.A
• 3-Disc CD {P3}	.NA	A24	.NA	A24	.A
• Compact Disc Deck {P5}	.NA	A24	.NA	A24	.A
• Convenience Package {CQ}	.O	.O	.O	.O	.NA
• Power Package {PO}	.O	.O	.O	.O	.O
• Radio Prep Package {RR}	.NA	.O	.NA	.O	.NA
• SX Package {SX}	.NA	.NA	.O	.NA	.NA
• LX Package {LX}	.NA	.O	.NA	.O	.NA
• Value Edition Packages {PQ}, {PY}	.O	.NA	.NA	.NA	.NA
• Value Edition Package {PV}	.NA	.NA	.O	.NA	.NA

Legend

S	Standard
O	Optional
A	Dealer/Port-Installed
NA	Not Available
{ }	Option Code

Notes:

{CL}	Includes voltmeter and oil pressure gauge; leather-wrapped steering wheel and Lighting package (SR5 only)
{TW}	Includes variable intermittent windshield wipers with timer
{CQ}	Includes tilt steering wheel, cruise control, tachometer, tripmeter, and digital quartz clock
{PO}	Includes power windows and door locks. SR5 model adds: chrome power outside mirrors, and Lighting package; glove box light and illuminated ignition key ring
{SX}	Aluminum wheels, cloth bucket seats with headrests, center console box, sliding rear window, 31" X 10.5" R15 tires, Chrome package {CH}, and gas shocks (std. on V6 models)
{LX}	Chrome package {CH}, power steering (std. on 4x2 V6 and 4x4) Deluxe ETR/Cassette with 4 speakers, gray privacy glass, rear sliding window, air conditioning (CFC-free) {AC}, and passenger sun visor with mirror
{PQ}	Includes power steering, AM/FM ETR Radio with 2 speakers, black rear bumper and carpeted floor mats
{PY}	Includes {PQ} plus Chrome package {CH}, and air conditioning (CFC-free) {AC}
{PV}	Includes air conditioning (CFC-free) {AC}, AM/FM ETR Radio with 2 speakers and carpeted floor mats
5	Included with {LX} option
9	Included with {PO} option
13	Included with Convenience Package {CQ}
14	Includes gray privacy glass
15	Included with {WR} option
16	Included with {PY} and {PV} options
17	Requires tilt steering wheel {TW}
18	Includes leather-wrapped steering wheel and lighting package
19	Included with {TW} option
20	Illuminated
21	Includes removable/flexible fender mounted antenna
22	Dolby® is a registered trademark of Dolby Laboratories, Inc.
23	Four speakers on SR5
24	Requires 4 speaker audio system

Standard/Optional Features

Safety*

	4x2 REG CAB VALUE ED.	4x2 XTRACAB/ XTRACAB V6	4x4 REG CAB 4-CYL / V6	4x4 XTRACAB/ XTRACAB V6	4x4 XTRACAB SR5 V6
• Driver-side air bag Supplemental Restraint System (SRS)	S	S	S	S	S
• Seatbelt, driver: 3-point with ELR ^{25,27}	S	S	S	S	S
• Seatbelt, front outboard passenger: 3-point with ELR/ALR ^{26,27}	S	S	S	S	S
• Seatbelt, rear outboard passengers: 3-point with ELR/ALR ²⁶	NA	S	NA	S	S
• Seatbelt, center passenger: 2-point center lap belt	S	S	S	S	NA
• Energy-absorbing steering wheel and column	S	S	S	S	S
• Side-door beams	S	S	S	S	S

Legend

S	Standard
O	Optional
A	Dealer/Port-Installed
NA	Not Available
{ }	Option Code

Notes:

- * See "Safety" section beginning on page 12 for additional information
- 25 Emergency Locking Retractor (ELR)
- 26 Emergency Locking Retractor (ELR) / Automatic Locking Retractor (ALR)
- 27 With adjustable shoulder belt anchor

Specifications

Mechanical

ENGINE		VALUE EDITION		XTRACAB V6		REGULAR CAB V6		XTRACAB SR5 V6	
Type		2.4-L 4-Cyl DOHC* 16-V EFI		2.4-L 4-Cyl DOHC* 16-V EFI/ 3.4-L V6 DOHC** 24-V EFI		2.7-L 4-Cyl DOHC* 16-V EFI/ 3.4-L V6 DOHC** 24-V EFI		2.7-L 4-Cyl DOHC* 16-V EFI/ 3.4-L V6 DOHC** 24-V EFI	
Horsepower (bhp @ rpm)		142 @ 5000		142 @ 5000 V6: 190 @ 4800		150 @ 4800 V6: 190 @ 4800		150 @ 4800 V6: 190 @ 4800	
Torque (lb-ft @ rpm)		160 @ 4000		160 @ 4000 V6: 220 @ 3600		177 @ 4000 V6: 220 @ 3600		177 @ 4000 V6: 220 @ 3600	
MPG (EPA est. city/hwy)	-4-Cyl. -V6	5M - 23/28	4A - 22/25	5M - 23/28	4A - 22/25	5M - 19/23	4ECT - 18/21	5M - 19/23	4ECT - 18/21
DRIVETRAIN									
Type		Front-engine/rear-wheel drive		Front-engine/rear-wheel drive		Front-engine/part-time 4WD		Front-engine/part-time 4WD	
TRANSMISSIONS									
	-standard	5-speed manual overdrive		5-speed manual overdrive		5-speed manual overdrive		5-speed manual overdrive	
	-optional	4-speed automatic overdrive		4-speed automatic overdrive/ V6: 4ECT		4-speed ECT automatic overdrive ¹ V6: NA		4-speed ECT automatic overdrive	
Transfer Case		NA		NA		2 speed w/manual locking hubs		2 speed w/manual locking hubs ²	
Differential Ratio	-4-Cyl. -V6	5M - 3.416	4A - 3.583	5M - 3.416	4A - 3.583	5M - 3.416	4ECT - 4.100	5M - 3.416	4ECT - 4.100
				5M - 3.153	4ECT - 3.153	5M - 3.909		5M - 3.909	4ECT - 3.909
SUSPENSION									
Front		Ind; coil spring w/double-wishbone and stabilizer bar		Ind; coil spring w/double-wishbone and stabilizer bar		Ind; coil spring w/double-wishbone and stabilizer bar		Ind; coil spring w/double-wishbone and stabilizer bar	
Rear		Solid axle; leaf spring		Solid axle; leaf spring		Solid axle; leaf spring		Solid axle; leaf spring	
STEERING									
Type	-standard -optional	Rack-and-pinion Power-assisted rack-and-pinion		Rack-and-pinion V6: power-assisted Power-assisted rack-and-pinion		Power-assisted rack-and-pinion NA		Power-assisted rack-and-pinion NA	
Steering Ratio		22.3:1		22.3:1 / V6: 20.4:1		19.4:1		19.4:1	
Turning Diameter*** (ft.)		35.4		41.3		34.4		40.0	
Turns†		3.7		3.7 / V6: 3.4		3.5		3.5	
BRAKES††									
Front/Rear	-standard -optional	Ventilated disc/drum w/LSPV ³ 4-Wheel ABS		Ventilated disc/drum w/LSPV ³ 4-Wheel ABS		Ventilated disc/drum w/LSPV ³ 4-Wheel ABS		Ventilated disc/drum w/LSPV ³ 4-Wheel ABS	
WHEELS									
Type/Size	-standard -optional	Steel / 5.0 x 14 Alloy / 6.0 x 14		Steel / 6.0 x 14 Alloy / 6.0 x 14		Steel / 6.0 x 15 Alloy / 7.0 x 15		Steel / 6.0 x 15 Alloy / 7.0 x 15	
TIRES									
Type		All-season steel belted radial		All-season steel belted radial		All-season steel belted radial		All-season steel belted radial	
Size	-standard -optional	P195/75R14 P215/70R14		P215/70R14 NA		P225/75R15 31" x 10.5"		P225/75R15 31" x 10.5"	
Spare		Full-size		Full-size		Full-size		Full-size	
CAPACITIES									
Curb Weight (lbs.)	-4-Cyl. -V6	5M - 2560	4A - 2580	5M - 2745	4A - 2765	5M - 3190	4ECT - 3220	5M - 3345	4ECT - 3375
				5M - 2895	4ECT - 2915	5M - 3245		5M - 3410	4ECT - 3440
								SR5: 5M - 3405	4ECT - 3435
Fuel Tank (gals.)		15.1		15.1		18.0		18.0	
GVWR (lbs.)		4244		4-Cyl: 4497	V6: 4497	4-Cyl: 5104	V6: 5104	4-Cyl: 5104	V6: 5104
Towing††† (lbs.)		3500		4-Cyl: 3500	V6: 5000	4-Cyl: 3500	V6: 5000	4-Cyl: 3500	V6: 5000
Payload† (lbs.)	-4-Cyl. -V6	5M - 1684	4A - 1664	5M - 1752	4A - 1732	5M - 1914	4ECT - 1884	5M - 1759	4ECT - 1729
				5M - 1602	4ECT - 1582	5M - 1859		5M - 1694	4ECT - 1664
								SR5: 5M - 1699	4ECT - 1669

Exterior

Wheelbase (in.)	103.3	121.9	103.3	121.9
Overall Length/Width/Height (in.)	180.5/66.5/61.8 ⁴	199.0/66.5/62.0	180.5/66.5/67.3 ⁵	199.0/66.5/66.9 ⁶
Cargo Bed Length/Width/Height (in.)	74.5/57.9 ⁷ /15.9	74.5/57.9 ⁷ /15.9	74.5/57.9 ⁷ /15.9	74.5/57.9 ⁷ /15.9
Tread Width -front/rear (in.)	54.9/55.7	56.1/56.7	57.5/57.3	57.5/57.3
Ground Clearance (in.)	6.3 ⁸	6.5	10.8 ⁹	10.8 ⁹

Interior

Seating Capacity	3 ¹⁰	5	3 ¹⁰	5	SR5: 4
Head Room -front/rear (in.)	38.2/NA	38.4/35.5	38.2/NA	38.4/35.5	
Leg Room -front/rear (in.)	41.7/NA	42.8/27.2	41.7/NA	42.8/27.2	
Shoulder Room -front/rear (in.)	54.1/NA	54.1/53.3	54.1/NA	54.1/53.3	
Hip Room -front/rear (in.)	54.6/NA	54.6/53.1 ¹¹	54.6/NA	54.6/53.1 ¹¹	SR5: 54.6/52.6

Safety††

OCCUPANT RESTRAINT SYSTEMS

Air Bag (SRS)	Driver-side	Driver-side	Driver-side	Driver-side
Seatbelts	-driver 3-point with ELR ^{12,14}	3-point with ELR ^{12,14}	3-point with ELR ^{12,14}	3-point with ELR ^{12,14}
	-front outboard passenger 3-point with ELR/ALR ^{13,14}	3-point with ELR/ALR ^{13,14}	3-point with ELR/ALR ^{13,14}	3-point with ELR/ALR ^{13,14}
	-rear outboard passengers NA	3-point with ELR/ALR ¹³	NA	3-point with ELR/ALR ¹³
	-center passenger 2-point lap belt	2-point lap belt	2-point lap belt	2-point lap belt

Notes:

- NA Feature not available
- * Marked as Twin-Cam
- ** Marked as Four-Cam
- *** Curb-to-curb
- † Lock-to-lock
- †† Power-assisted
- ††† Requires additional equipment. Consult the 1997 Toyota Trailer Towing Guide for details and GCWR limits
- † Includes occupants, equipment and cargo
- †† See "Safety" section beginning on page 12 for additional information
- 1 Not available on V6 model
- 2 4WDemand on SR5
- 3 Rear brake Load-Sensing Proportioning Valve (LSPV)
- 4 62.0 with optional P215/70R14 tires
- 5 68.5 with optional 31" x 10.5" tires
- 6 68.3 with optional 31" x 10.5" tires
- 7 40.9 between wheel wells
- 8 6.5 with P215/70R14 tires
- 9 12.0 with optional 31" x 10.5" tires
- 10 2 with optional bucket seats
- 11 52.6 with speakers
- 12 Emergency Locking Retractor (ELR)
- 13 Emergency Locking Retractor (ELR)/Automatic Locking Retractor (ALR)
- 14 With adjustable shoulder belt anchor

Features and Benefits

Safety



KEY FEATURES

Driver-Side Air Bag (SRS)*

Side-Door Beams

Optional 4-Wheel Anti-lock Brake System (ABS)

Rear Load-Sensing Proportioning Valve (LSPV)

BENEFITS

Helps limit the motion of the head and upper body in the event of a severe frontal collision.

Help provide some protection if the Tacoma is hit from the side.

Helps avoid wheel lockup while providing better steering control during hard braking.

Helps reduce rear wheel lockup and improve steering control when braking.

Crumple Zones

Protective features at the front of the Tacoma **help absorb the impact of a collision.** These pre-stressed areas in the fender, hood, and related body components are designed to crush and absorb energy during an impact. As the area successively crushes in a collision, crash energy is dissipated, which **prevents much of the collision energy from reaching the passenger compartment.**

Side-Door Beams

Steel beams located under the sheet metal in Tacoma's doors **help provide some protection if the Tacoma is hit from the side.**

Fuel Tank Location

The Tacoma's fuel tank is located inside the perimeter of the vehicle's frame to **help reduce the risk of rupture in collisions.**

Impact Protection

Driver-Side Air Bag Supplemental Restraint System (SRS)*

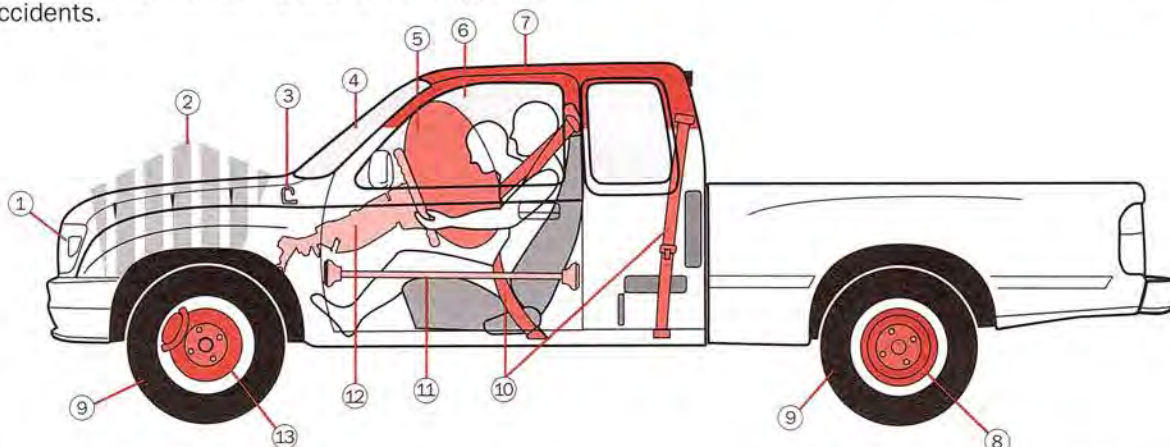


Driver-side air bag (SRS)* standard on all Tacoma models

In a severe frontal collision, sensors (located in the floor tunnel) **detect the force of the impact and cause the bag to inflate** within milliseconds (after it begins to happen) **helping to limit the motion of the head and upper body.** Safety belts must be worn at

all times for maximum protection. Air bag won't inflate in minor frontal impacts or other types of accidents.

- 1 Halogen headlamps
- 2 Crumple zones
- 3 Hood hold-down hooks
- 4 Laminated safety glass
- 5 Driver-side air bag (SRS)*
- 6 Tempered safety glass
- 7 Roof strength
- 8 Drum brakes w/LSPV w/opt. ABS
- 9 All-season steel belted radials
- 10 3-point outboard seatbelts
- 11 Side-door beams
- 12 Energy-absorbing steering wheel and column
- 13 Ventilated disc brakes w/opt. ABS



* The Toyota driver-side air bag is a Supplemental Restraint System (SRS) designed to inflate in a severe frontal collision. In all other accidents, the air bag will not inflate. To minimize the risk of severe injury in all types of crashes, all occupants must always wear seatbelts.

Features and Benefits



3-Point ELR/ALR Safety Belts at Outboard Locations¹

The **Emergency Locking Retractor (ELR)** allows the belts to extend or retract with occupant movement, yet **locks them during a sudden stop or upon impact.** The **Automatic Locking Retractor (ALR)** allows a baby seat to be secured without using a seatbelt locking clip. Do not use a rearward-facing child seat in front passenger seat. See Owner's Manual for child seat usage.



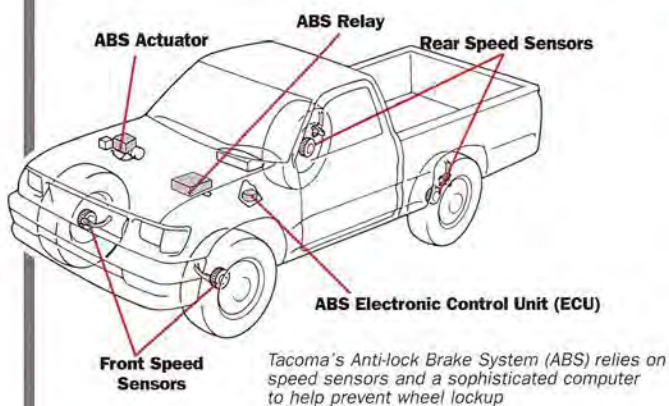
Xtracab Rear Seat Folding Table

Tacoma allows parents to **buckle a child safety seat in the rear of the Xtracab.** A folding table can serve as an auxiliary support for the **rear child seat restraint system.** The table attaches to the jumpseat located behind the front passenger seat, and **also serves as a cup holder** when not supporting a child seat.

Accident Avoidance

4-Wheel Anti-lock Brake System (ABS)²

ABS is a computer-controlled system that regulates braking pressure to **help avoid wheel lockup while providing better steering control during hard braking.**



Rear Load-Sensing Proportioning Valve (LSPV)

The LSPV varies the amount of hydraulic pressure the rear brakes receive based upon the load condition of the vehicle. **This helps reduce rear wheel lockup depending on the load, thereby helping the driver to maintain better control during braking.**

Power-Assisted Front Disc Brakes with Ventilated Front Rotors

Vents in the brake disc (or rotor) allow cooling air to pass through the hot disc. **This helps reduce heat buildup to maintain stopping power, and helps lessen the chance of the brake fading, glazing or warping.**

Center High-Mount Stop Lamp (CHMSL)

This third brake light, stylishly integrated into the roof of the Tacoma cab, **helps drivers in vehicles behind the truck to recognize more quickly that the brakes have been applied.**

Personal Security

The following standard or optional features provide customers greater feelings of "safety and security" every time they enter and use their Tacoma:

- **Low fuel level warning light³** indicates the need to refill the fuel tank.
- **Full-size spare tire** eliminates the worries often associated with a temporary spare.
- **Lights-on and key-in-ignition warning buzzers** remind the driver to turn off lights and remove the key from the ignition.
- **Two-turn driver door lock⁴** permits opening the driver's door only when the key is turned once, and both doors when the key is turned again.
- **Passenger window lock-out system⁴** allows the driver to fully control passenger window operations.
- **Toyota Vehicle Intrusion Protection (V.I.P.)²** honks the horn and flashes the headlamps/tailamps when a secured Tacoma is broken into. It also disconnects the starter in case of break-in. The system is automatically armed by removing the ignition key from the ignition.

1 Driver has ELR only
2 Optional on all models

3 Standard on SR5 only
4 Available on all models with optional Power Package

Features and Benefits

Performance



KEY FEATURES

Dual Overhead Cam and 4-Valves per Cylinder

Toyota Direct Ignition (Distributorless)¹

Rack-and-Pinion Steering

Optional 4x4 One-Touch Hi-4 Selector (SR5 V6)

BENEFITS

Helps produce greater horsepower and higher fuel economy, and helps make the engine smoother, quieter and more efficient.

Eliminates moving parts which helps improve performance, enhance durability and reliability, and reduce maintenance.

A simple, precise steering system that is rugged and durable, and also provides outstanding steering response, excellent road feel and sporty handling characteristics.

Allows selection of 4WD High with the touch of a button located on the transmission shift lever.

Drivetrain

The 2.4-L 4-Cylinder 16-Valve Engine Provides a Superb Balance of Power and Economy

This engine achieves 142 horsepower (HP) at 5000 rpm. Its torque is rated at 160 lb-ft at 4000 rpm. With a 5-speed manual transmission, it has an EPA highway mileage estimate of 28 mpg*. Engine features include multi-port fuel injection, TCCS and DOHC technology.

The 2.7-L 4-Cylinder 16-Valve Engine Produces Outstanding Power and Torque

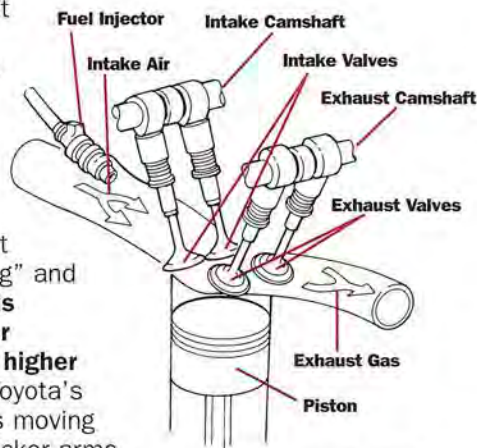
This engine achieves 150 HP at 4800 rpm. Its torque is rated at 177 lb-ft at 4000 rpm. With a 5-speed manual transmission, it has an EPA highway mileage estimate of 23 mpg*. This engine includes DOHC technology, 4-valves-per-cylinder, sequential fuel injection, twin balance shafts, TCCS and light weight parts.

The 3.4-L V6 24-Valve Engine Offers Even More Horsepower and Torque

Tacoma owners who want the most available performance and pulling power can get it with the optional 3.4-L 190 HP V6 (at 4800 rpm). The torque rating is 220 lb-ft at 3600 rpm. Technical features include DOHC technology (four-cam), 4-valves-per-cylinder, sequential fuel injection, TCCS, Toyota Direct Ignition, and twin knock sensors.

Dual Overhead Cam (DOHC) and 4-Valves per Cylinder

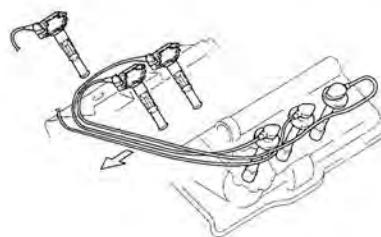
This arrangement of two intake and two exhaust valves per cylinder allows more fuel/air mixture into the cylinder for more efficient engine "breathing" and combustion. **This produces greater horsepower and higher fuel economy.** Toyota's DOHC eliminates moving parts such as rocker arms and push rods to **help make the engine smoother, quieter and more efficient.**



The double overhead camshaft is part of Toyota's 4-valve-per-cylinder technology

Toyota Direct Ignition (Distributorless)¹

Eliminating all moving parts associated with the distributor (including the distributor cap and rotor) by placing a compact coil directly on three of the six spark plugs minimizes misfiring and loss of engine power. **The result is improved performance, greater durability and reliability, and reduced maintenance.**



Toyota's distributorless ignition system

Toyota Computer Controlled System (TCCS)

Tacoma's engines utilize a sophisticated computer to make precise adjustments to the fuel injection and ignition systems. This technology **optimizes engine operation for best performance under varying driving conditions.**

* See Mileage Statement on back cover

¹ V6 and 4x4 4-cylinder models only

Features and Benefits



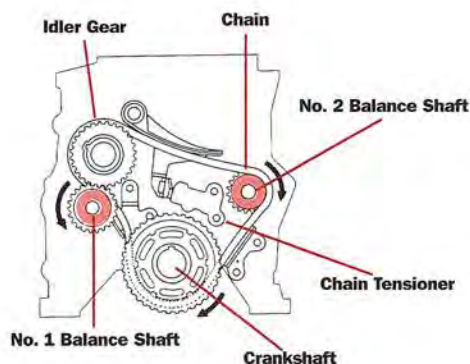
Twin Balance Shafts (2.7-L 4-cylinder only)

The 2.7-L 4-cylinder engine has two chain-driven, counter-rotating balance shafts that spin at twice the crankshaft speed to help counteract engine vibrations. This **helps the engine run smoother with minimum noise and vibration transferred into the passenger compartment.**

4-Speed Electronically Controlled Automatic Transmission (4ECT)²

Gear selection is controlled by a sophisticated computer that analyzes driving conditions (speed, load, etc.) and driver actions (throttle position) before selecting a gear. **The result is smoother shifts and improved performance and fuel economy.** Following are four features of the transmission:

1. The **ECT Power Button** has "Normal" and "Power" modes which allow the driver to choose between a sportier feel (stays in lower gears longer and downshifts more readily) or maximum fuel economy (upshifts sooner and downshifts less readily).
2. **Overdrive 4th Gear** reduces engine rpm at highway speeds which provides quieter driving and increased fuel economy.
3. The **Overdrive-off Switch** on the shifter locks out the overdrive 4th gear. This prevents "gear hunting" when driving up a steep grade and adds engine braking when driving downhill.
4. The **Electronic Control Unit** momentarily retards ignition timing and electronically disengages the transmission during gear changes. This results in smoother shifts and better performance.



Rear Differential Lock³

When the transfer case is engaged in "L4", turning on the rear differential lock switch in the instrument panel **"locks" the rear differential so both wheels turn at the same rate of speed.** This helps provide additional traction in inclement on- and off-road conditions.



² Optional on all models except: 4x2 regular cab and Xtracab 4-cylinder; and 4x4 regular cab V6

³ Optional on 4x4 regular cab and Xtracab with 4-cylinder engine and 5M; and 4x4 regular cab and Xtracab V6 models

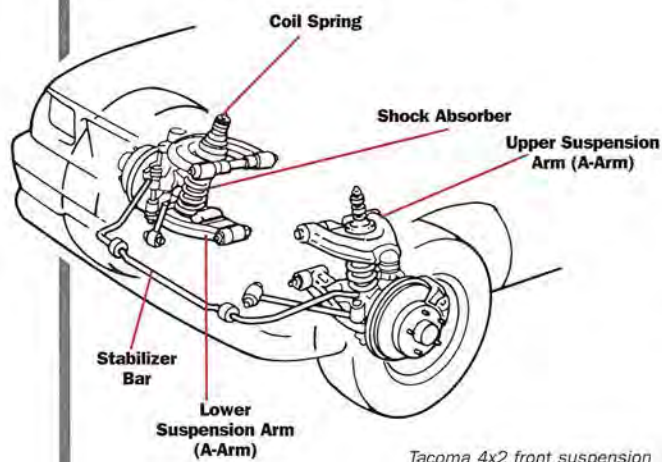
Features and Benefits



Chassis

Independent Wishbone Front Suspension

Each front wheel is connected by ball joints to upper and lower A-arms (wishbones) of unequal length. Coil springs and a wider track are used to **enhance ride comfort and handling.**



Tacoma 4x2 front suspension

Front Stabilizer Bar

This suspension piece reduces body roll (or leaning) while taking corners. **This helps provide Tacoma greater vehicle stability and driver control during cornering.**

Live Solid Rear Axle with Leaf Springs

All Tacoma's have a live solid rear axle that helps keep the wheels and tires perpendicular to the road surface over a range of load weights **for enhanced handling and control and reduced tire wear.** Leaf springs are **rugged and simple, and are designed for heavy loads.** The pads between the leaf spring plates also help reduce vibration. Tacoma's staggered rear shock design — one shock absorber mounted behind the rear axle and the other in front — results in **improved handling ability** when driving over rough road surfaces.

Rack-and-Pinion Steering

Rack-and-pinion steering is a **simple, precise steering system that is rugged and durable,** and also **provides outstanding steering response and excellent road feel.** Tacoma also has a small turning circle which makes it easy to maneuver in tight places. **To optimize steering feel and reduce vibration, rubber mounted bushings are used to attach the steering gearbox to the frame.**

4-Wheel Drive Features

Part-Time 4-Wheel Drive with 4WDemand⁴

4WD Tacoma models have automatic locking front hubs and shift-while-driving capability. **Engaging 4WD is as simple as moving the shift lever from High Range 2WD (H2) to either High Range 4WD (H4) or Low Range 4WD (L4). 4WDemand automatically engages the 4-wheel drive** and locks the front hubs at speeds as high as 50 mph.

One-Touch Hi-4 Selector⁵

At the simple touch of a button on the transmission shift lever, One-Touch Hi-4 **automatically engages the 4-wheel drive** and locks the front hubs at speeds as high as 50 mph.



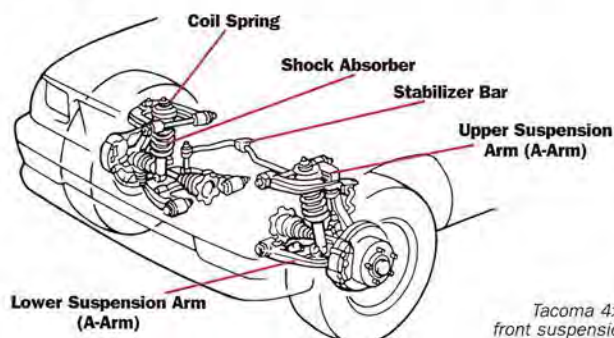
The push-button clutch start cancel switch is conveniently located on the lower left of the instrument panel

Clutch Start Cancel Switch⁶

In off-road situations, the driver can use this switch to **bypass the clutch** and use the low gearing of the starter motor to **help climb out of difficult driving situations.**

4x4 Front and Rear Suspension

The Tacoma 4x4 is designed to be a true off-road vehicle. To meet the need for **increased ground clearance and suspension travel,** the upper A-arm and stabilizer bar are mounted higher than on 4x2 models. Also, the Tacoma 4x4 has its rear leaf springs located above the axle for **added ground clearance.**



Tacoma 4x4 front suspension

Gas-Filled Shock Absorbers⁷

Air bubbles in shock absorber hydraulic fluid cause a decrease in the shock's performance — known as shock fade. Pressurized gas in the shock absorber prevents air bubbles from forming, making them more **resistant to fading.** These shocks also provide a **smooth and comfortable ride in an off-road environment.**

4 Standard on SR5 V6. Optional on all other 4x4s

5 Optional on 4x4 Xtracab SR5 V6 only

6 4x4 manual transmission models only

7 Standard on 4x4 V6. Optional on 4x4 4-cylinder models

Features and Benefits

Comfort and Convenience



KEY FEATURES

Standard Convenience Features

Quietness Features

Xtracab Forward-Facing Rear Jump Seats

Xtracab Rear Entry/Exit Device

BENEFITS

Cup holders, door map pockets, and assist grips provide a high level of driver and passenger interior convenience.

Ladder frame, dash silencer, asphalt sheets, and specially designed ventilation fans help keep the interior environment extremely quiet.

Serves as seat, storage compartment and child seat base.¹

Xtracab passenger-side seat easily tilts and slides forward.

Adjustable Shoulder Belt Anchors

The Tacoma front shoulder belt anchors can be adjusted to "custom-fit" the belts to the size of the occupants. This allows individual drivers and passengers to position where the belt crosses the shoulder and chest to enhance occupant comfort.

Tilt Steering Wheel²

The entire steering column adjusts up and down without interfering with the column shifter, making entry and exit easier.

Rubber Seat Mounts

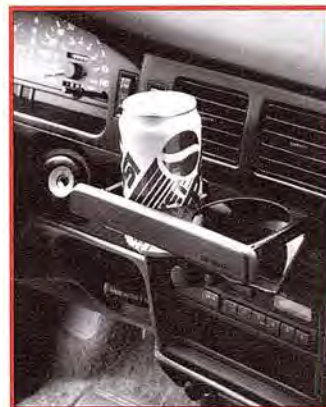
Rubber seat track mounts and foam seat padding are used to help absorb unpleasant vibration and bumps that can reach the driver and passengers — improving comfort and ride.

Standard Convenience Features

Dash-mounted cup holders, dual door map pockets and assist grips help make the Tacoma a comfortable, easy-to-use primary or secondary vehicle.

Spacious and Comfortable Seating

Toyota engineers made the Tacoma cabin roomier. This provides more comfortable seating positions and easier entry and exit for driver and passengers.



Dual cup holders are just one of Tacoma's many conveniences

The Tacoma's interior offers car-like comfort and conveniences; SR5 model shown

- 1 Folding table, which can support rear child seat, is on the side behind the front passenger seat
- 2 Standard on 4x4 Xtracab SR5 V6. Optional on all other models

Features and Benefits



Quietness

The Tacoma has many features that help reduce noise in the passenger cabin. Here are four important items:

1. A **ladder frame** that was designed by engineers to help minimize vibration.
2. A **dash silencer** made of felt is placed behind the instrument panel to help absorb engine noise.
3. **Asphalt sheets** are applied to the floor and transmission tunnel to help reduce vibrations and absorb engine and road noise.
4. Interior noise is reduced by specially-designed **heating and ventilation fans** that are also used in the Lexus 400.

Xtracab Comfort and Convenience Features

Forward-Facing Rear Jump Seats

The area behind the front seats has **great versatility**. The seat bottoms flip up to reveal storage areas. And there's a **folding table** to help support a **rear child seat** that doubles as a **cup holder**.¹

Rear seats flip up for added storage



Rear Entry/Exit Device

This Xtracab passenger-side feature **allows the front seat to tilt and slide forward**. This makes it very **easy to access the rear seat** of the Tacoma—whether opening it for passengers or reaching for cargo.



Rear entry/exit device facilitates getting in and out of the truck

Standard Features in Xtracab (above what is in a regular cab)

1. **Coat hooks** keep clothes neat.
2. **Tilt-out rear quarter windows** improve ventilation.
3. **Privacy glass**³ reduces the sun's glare and helps keep the interior cool.
4. **60/40 split-folding front bench seat** (bucket seats on SR5 V6).

¹ Folding table, which can support rear child seat, is on the side behind the front passenger seat

³ Standard on 4x4 Xtracab SR5 V6. Optional on other Xtracab models

F

eatures and Benefits

Styling



KEY FEATURE

BENEFIT

4x2 Appearance Attributes

Freshened athletic grille with new headlamps and clearance lamps provide a sporty appearance.

4x4 Appearance Attributes

Short grille, high ground clearance and bulging fender flares provide a bold appearance.

Flush-Mounted Glass and Windshield Moldings

Help reduce wind noise and provide a sleek, contemporary look.

Available Bodyside Moldings

Help preserve Tacoma's appearance by providing scratch and ding resistance.

Cloth Seats and Stylish Door Trim Panels

Provide an inviting interior and a "flow through" look.

Tacoma 4x4



Tacoma 4x2



- **A short, sturdy grille** and a **taller, but narrower valence panel** produce a **bold look**.
- **Bulging fender flares** and commanding ride height convey "ultimate 4x4."
- **Boldly shaped alloy wheels** (optional) produce a rugged appearance.

- **A freshened grille** and **new headlamp and clearance lamp** enhance Tacoma 4x2's **sporty and athletic stance**.
- **Bold character lines** in the fenders and bed accentuate sporty appearance.
- **Uniquely designed alloy wheels** (optional) provide a sporty look.

Features and Benefits



Exterior

SX Package

This package is available on the 4x4 regular cab models. It includes the following items:

- Aluminum alloy wheels
- 31" x 10.5" R15 tires
- Cloth bucket seats with headrests
- Center console box
- SX tailgate emblem
- Sliding rear window
- Gas-filled shock absorbers¹
- Chrome Package: front and rear bumpers, grille and trim

LX Package

Available on the Tacoma 4x2 and 4x4 Xtracab, this package includes the following features:

- Chrome package: front and rear bumpers, grille and trim
- Power steering²
- Deluxe AM/FM ETR/Cassette with 4 speakers
- Gray privacy glass
- Sliding rear window
- CFC-free air conditioning
- LX tailgate emblem
- Passenger sun visor with mirror

Value Edition Packages {PQ}, {PY}, {PV}³

These packages are available on 4x2 and 4x4 regular cab models.³ For specific contents, see package descriptions on page 9.

Flush-Mounted Glass and Windshield Moldings

These features provide the cab with a **sleek, contemporary appearance, and help reduce wind noise** in the passenger cabin.

Close-Fit Body Panels

Tight tolerances between body panels provide the Tacoma with an almost **seamless look and reduced wind noise**.

Available Bodyside Moldings⁴

Tacoma owners will enjoy the **scratch and ding resistance** provided by these moldings.

Interior

Instrument Panel Ergonomics and Appearance

Designers have given the Tacoma instrument panel a **softly curved and sculpted look**. The Tacoma instrument panel is also **easy to read** and the **switches and controls are easy to reach**. These design characteristics **help reduce driver fatigue and enhance driver and passenger comfort**.

Cloth Seats, Stylish Door Trim and Cut-Pile Carpeting

Tacoma designers included cloth seats and matching cut-pile carpeting to **enhance the truck's upscale image**. Door map pockets and the side-mounted speakers "flow together" for a **seamless look**.



1 Available on 4x4 4-cylinder. Standard on 4x4 V6

2 Standard on 4x2 V6 and 4x4 models

3 Packages {PQ} and {PY} available with 4x2 regular cab; {PV} available with 4x4 regular cab

4 Optional on all models

Features and Benefits

Quality/Dependability/Reliability and Value



KEY FEATURES

BENEFITS

Award Quality

Tacoma ranked by J.D. Power and Associates as the Best Compact Pickup in Initial Quality for 1996.

Rust Inhibitor Process

A multi-step process that helps preserve Tacoma's appearance by helping the body panels and other exposed components resist rust and corrosion.

Double-Wall Cargo Bed

Protective inner wall enhances rigidity and helps keep the exterior free from dings caused by the movement of items in the bed.

Ladder Frame

Provides superior durability under demanding use and heavy loads.



Soft Chip Primer

Soft-chip primer reduces damage to the paint due to chipping

Dependability

Award Quality

J.D. Power and Associates ranked Tacoma the "Best Compact Pickup in Initial Quality" in its 1996 Light Truck Initial Quality Study^{SM,1}. We believe this provides customers **peace of mind** in knowing that Toyota has been proven to be a provider of the **highest initial quality** trucks by independent researchers.

¹ The Tacoma is the highest ranked compact pickup in the J.D. Power and Associates 1996 Light Truck Initial Quality StudySM. Study based on a total of 11,815 consumer responses indicating owner reported problems during the first 90 days of ownership.

Each Truck Goes Through An Extensive Rust Inhibitor Process

- Each Tacoma starts with **rust-resistant Excelite steels** coated with a zinc and iron alloy. These are used for most inner and outer body panels. If a small scratch occurs, the Excelite II simply causes the paint to turn white and **helps protect the metal from rusting**.
- The body is fully dipped in a **phosphate bath** to make sure that even **the most inaccessible areas resist rust**.
- Polyvinyl chloride (**PVC**) **coating** helps protect the wheel wells and other areas of the body against chips that lead to rust.
- **Anti-chip paint** is applied to the front edge of the hood, the lower door panels, rocker panels and cargo bed side panels to **help protect these areas from stone chips and other minor debris** thrown from the tires.

No-Rust Components

The front bumper, lower valence panel and the cowl top vent louver are made of a high quality composite plastic material, **eliminating the possibility of rust** in these exposed vehicle components.

Double-Wall Cargo Bed Construction

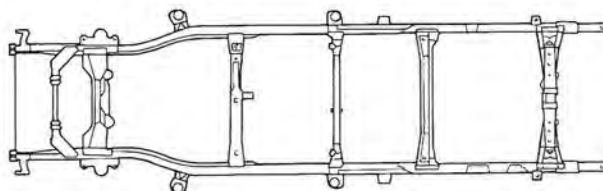
Provides a protective "inner wall" in the cargo bed that **stands up to tough loads** and **helps protect exterior of bed from dings**.

One-Piece Inner and Outer Side Panels

The cargo bed is constructed from one-piece inner and outer side panels. **This reduces the number of joints required, increases rigidity, improves rust resistance, and gives the Tacoma a clean, polished appearance.**

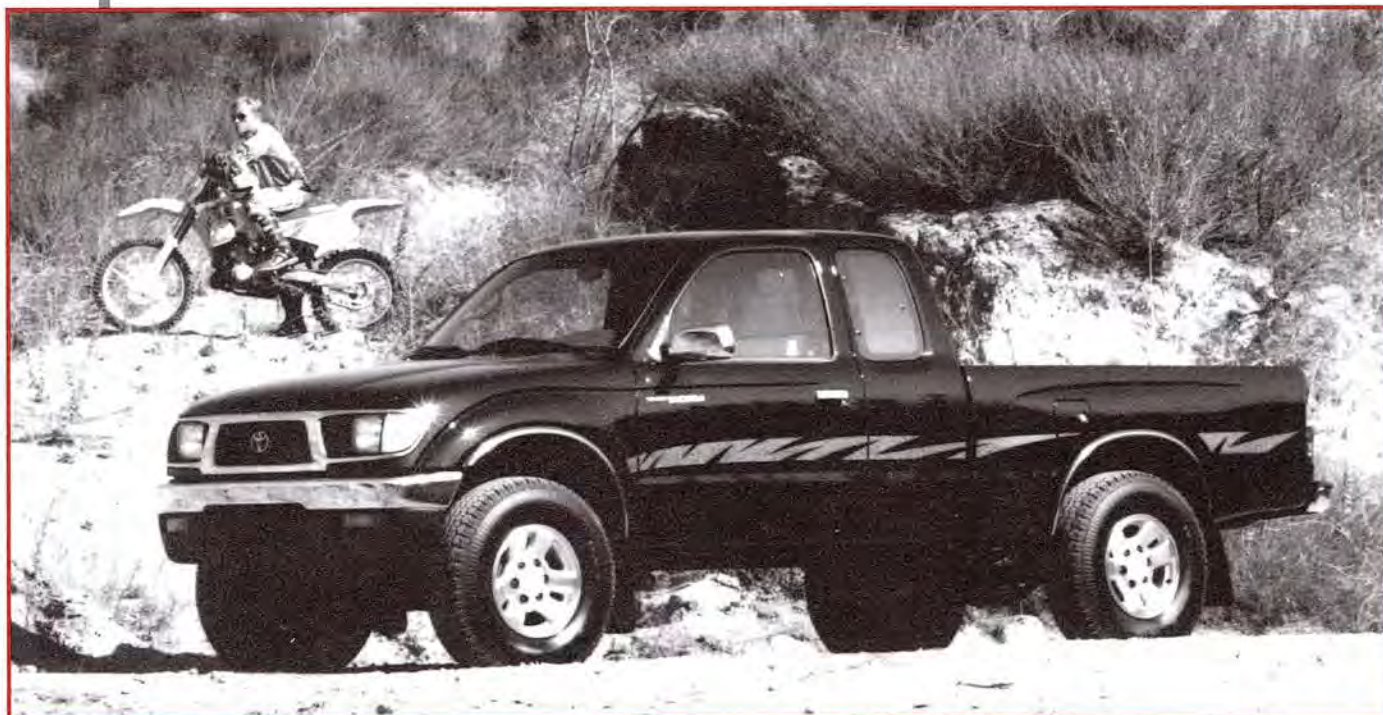
Ladder Frame

Every Tacoma features a **strong and rigid ladder frame**. The side rails (structural members around perimeter of frame) and the cross members are made of **high-strength anti-corrosion steel, enhancing durability**.



The rugged frame has been designed to minimize vibration and weight, even as its rigidity was increased

Features and Benefits



1996 model shown

Rugged Off-Road Durability of 4x4s

All Tacoma 4x4s feature:

1. **Front suspensions** that provide increased ground clearance.
2. **Rear leaf springs** above the axle that increase ground clearance.
3. **Steel skid plates** that protect the front suspension, fuel tank, transfer case.
4. **High ground clearance** (10.8 inches)² helps Tacoma clear off-road surface obstacles.

Reliability

Gold-Plated Electrical Connectors

Gold, of the best electrical conductors, **resists oxidation and corrosion, thus greatly improving reliability.** These expensive terminals are used in vital circuits such as the fuel injection computer, oxygen sensor, and air bag sensor.

Toyota Direct Ignition (Distributorless)³

Not only does this system improve performance (see "Performance" section), it also results in **greater durability and reliability** because all moving parts associated with the distributor have been eliminated. In addition, **maintenance is reduced** because there is no distributor cap or rotor to replace during a tune-up.

² 12 inch ground clearance with the optional 31" x 10.5" tires
³ V6 and 4x4 4-cylinder models only

Air Bag, Driver-side (SRS)

In vehicles equipped with an air bag Supplemental Restraint System (SRS), the air bag inflates with nitrogen gas within milliseconds to help limit the motion of the driver's head and upper torso to help prevent injury in a severe frontal impact. This system supplements, but does not replace, the 3-point seatbelt system, which provides primary protection. The air bag is not intended to operate during an impact other than a severe frontal impact, in which case the 3-point system is the only personal protection. In a severe frontal impact, the center main sensor senses the impact and activates the air bag system. The air bag, which emerges from the steering wheel pad, then deflates within a few tenths of a second.

Automatic Locking Front Hubs

In a part-time 4-wheel drive vehicle, the front hubs must disconnect to "freewheel" when in 2-wheel drive. When the vehicle is shifted into 4-wheel drive, the axles automatically "lock up" in the differential, providing equal torque at each front wheel. They are activated simply by shifting into 4WD. Manual hubs (the old style) were mechanical systems that forced the driver to get out of the vehicle and turn a switch on each wheel before they were capable of accepting engine power.

Axle Ratio

The number of times the driveshaft rotates to turn the axle shaft one rotation. For example, if the driveshaft gear had 10 teeth and the axle shaft gear had 30 teeth, the driveshaft gear would have to turn three times to turn the axle shaft gear once. This translates to a ratio of three-to-one (3:1).

Balance Shafts

Balance shafts are small, weighted shafts — similar to a camshaft — inside the engine block. Two balance shafts rotate in the direction counter to that of the crankshaft rotation to "cancel out" engine vibration. Balance shafts are most common to 4-cylinder engines to help reduce noise, vibration and harshness (NVH) inherent in this engine design.

Clutch Start Switch

This device in manual transmission 4x4 equipped vehicles prevents the vehicle's starter motor from engaging unless the clutch is depressed. This prevents the vehicle from starting while in gear. In some vehicles, including the 4x4 Tacoma and 4Runner, a separate button cancels the clutch start switch. This permits starting while in gear, an advantage in certain off-road conditions.

Crumple Zones

These exist at the front of the Tacoma to help absorb the impact of a collision. These pre-stressed areas in the fender, hood and related body components are designed to deform in a predetermined manner during a collision. Their purpose is to lessen the forces the impact transfers to the passenger compartment. In essence, the crumple zone of a vehicle is sacrificed to protect the occupants.

Differential

A gear assembly between axle shafts that permits one wheel to turn at a different speed than the other, while transmitting power from the drive shaft to the wheel axles.

Double Overhead Cam (DOHC)

An engine configuration with two overhead camshafts per row of cylinders. One camshaft operates the intake valves and the other operates the exhaust valves. This is the usual arrangement in engines with multi-valve cylinder heads. Compared to single overhead cam designs, the direct drive used in all Toyota DOHC engines requires fewer moving parts. It eliminates the rocker arm needed to activate the valves, thus improving efficiency and reducing vibration and noise. Compared to push-rod overhead valve (OHV) engines, which use an arrangement by which the camshaft is located in the engine block and opens the valves via long push-rods and rocker arms, it eliminates the need for both of these components. With fewer moving parts, there is less inertia. So, an overhead cam engine can run at a higher speed and produce more power than a comparably sized push-rod engine.

ELR/ALR 3-Point Seatbelts

The ELR (Emergency Locking Retractor) allows the driver seatbelt to extend and retract with occupant movement, yet locks the belt during a sudden stop or upon impact. The ALR (Automatic Locking Retractor) makes it possible to secure a baby seat without using a seatbelt locking clip. To activate the ALR retractor, pull the shoulder belt all the way out, then allow it to retract to the desired length. Press down firmly on the child seat as the belt retracts to buckle the child seat securely in place. The ALR retractor is deactivated by unbuckling the belt and allowing it to retract fully. Do not use a rearward-facing child seat in the front passenger seat. See Owner's Manual for child seat usage.

4WDemand

Allows the driver to go from 2-wheel drive to 4-wheel drive and back while the vehicle is in motion, automatically locking the front hubs at speeds up to 50 mph. The driver needs only to move a lever to engage 4-wheel drive; it is not necessary to stop the vehicle. This system is available on certain 4-wheel drive Toyota Trucks and 4Runner models.

Gross Combined Weight (GCW)

The total weight of a vehicle, including all its contents, plus the weight of a trailer and its entire contents. The GCW should not be allowed to exceed the Gross Combined Weight Rating (GCWR).

Gross Combined Weight Rating (GCWR)

The maximum allowable weight as specified by the manufacturer. Exceeding this limit compromises safety.

Gross Vehicle Weight (GVW)

The sum of curb weight and payload. Curb weight is the weight of a vehicle with all fluids, less driver, ready to be operated. Payload is the load added to a vehicle including the driver, passengers and any other cargo.

Gross Vehicle Weight Rating (GVWR)

The maximum allowable loaded vehicle weight. It includes the vehicle and its equipment, fluids, occupants and cargo.

Horsepower

The measurement of the ability to do work over time. One horsepower is the amount of energy needed to raise 33,000 pounds a distance of one foot in one minute. Simply put, it is the engine performance rating that helps an engine maintain and maximize vehicle speeds.

Hydraulic Shift Pressure

Automatic transmissions operate by fluid pressures to engage and disengage the transmission's gears from the engine.

Load-Sensing Proportioning Valve (LSPV)

Mounted to the frame and the rear suspension arm/rear axle, the LSPV senses the weight distribution of the vehicle and automatically varies the amount of hydraulic pressure to the rear brakes based on the load in the vehicle. This helps to reduce rear-wheel lock-up with either light or heavy loads for improved stopping control.

One Touch Hi-4 Selector

In 4x4 Tacoma's, this SR5 optional feature lets the driver shift into 4WD High with the touch of a button.

Passenger Window Lock-Out System

When used, this optional system disables the passenger side window from being operated by anyone except the driver.

Payload Rating

The maximum allowable weight a truck can transport—always determined by the manufacturer. Payload is calculated by subtracting curb weight from GVWR. So, if you increase the curb weight by adding components (such as a bigger engine or an automatic transmission), the payload rating will decrease.

Rack-and-Pinion Steering

Consists of a round pinion gear attached to the steering shaft, and a flat bar with gear teeth cut into it, called the rack. The rack and pinion mesh at a point between the front wheels. As the steering wheel is turned, the shaft from the steering column turns the pinion gear, forcing the rack either right or left along a horizontal plane. The rack is linked to the wheels via tie rods, which push and pull the wheels to steer them. In general, rack-and-pinion steering is precise and responsive.

Rear Differential Lock

When the transfer case is engaged in "L4", turning on the rear differential lock switch in the instrument panel "locks" the rear differential so both wheels turn at the same rate of speed. This helps provide additional traction in inclement on- and off-road conditions.

Rear Leaf Springs

A long, thin, narrow strip of steel, curved in a semi-elliptical arc and connected at each end to the vehicle's frame. Usually, more than one strip is used to form a multi-leaf spring. Rugged and simple in design, leaf springs are extremely flexible, are able to be layered according to weight application, and are designed to support heavy loads. The rear leaf springs on Tacoma 4x4's are located above the axle for added ground clearance.

Safing Sensor

A sensor in a vehicle's air bag system designed to prevent inadvertent deployment.

Glossary

Torque

A force in a twisting motion. In an engine, torque is the twisting motion at the crankshaft measured in foot-pounds (lb-ft). One foot-pound is the force of one pound acting at right angles at the end of an arm one foot long. Simply stated, torque is the engine power that gets a vehicle to speed — felt especially at off-line take-off and during acceleration.

Towing Capacity

The maximum weight a truck can pull. Towing the maximum weight may require a particular transmission, trailer hitch or other equipment.

Toyota Computer Controlled System (TCCS)

A system used in all Toyota vehicles to monitor a variety of factors, including engine speed, engine temperature, air temperature and engine load. This information is sent to a sophisticated computer, which then coordinates adjustments to the fuel-injection and ignition system. This technology can optimize engine operation for emissions, performance and efficiency under varying driving conditions.

Toyota Direct Ignition (Distributorless)

Eliminates conventional components such as the distributor cap and rotor. Each spark plug or pair of plugs gets its own coil. Each coil receives low voltage from conventional wires and turns this low voltage into high voltage, sending the pulse directly to the spark plug. Improved performance and durability are achieved.

Toyota Vehicle Intrusion Protection (V.I.P.)

This is an optional break-in alarm that flashes the headlamps and taillamps and sounds the horn when a secured Tacoma is broken into. It also disables the starter if someone forcefully enters the car. The system is automatically armed by removing the ignition key from the ignition.

Ventilated Front Disc Brakes

Vents in the brake rotor allow cooling air to pass through the hot disc. This helps reduce heat build-up and lessens the chance of the brake fading, glazing or warping.

Notes

Notes



Notes



COPYRIGHT© 1996 TOYOTA MOTOR SALES, U.S.A., INC. ALL RIGHTS RESERVED. COPYING OR ANY OTHER REPRODUCTION, IN WHOLE OR IN PART, WITHOUT THE EXPRESS WRITTEN PERMISSION OF TOYOTA MOTOR SALES, U.S.A., IS STRICTLY PROHIBITED.

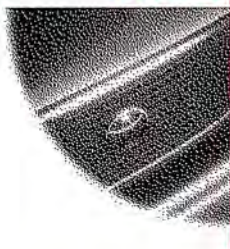
Toyota Motor Sales, U.S.A., Inc., by the publication and/or dissemination of this publication does not create any warranties, either expressed or implied, as to Toyota products. The information contained herein was up-to-date at the time of publication, but may subsequently be changed or added to without notice and without incurring any obligation. Reliance on this information creates no liability for Toyota.

This publication is produced solely for use as an informational sales aid. Toyota Motor Sales, U.S.A., Inc., its employees, representatives, and/or agents shall not be held liable for any omission of data or inclusion of erroneous data even where said omission is alleged to have been relied upon by a buyer of Toyota products. This publication and any material contained herein may not be reproduced without the prior written consent of Toyota's Training Department.

Any EPA fuel economy figures included in this publication are estimates to be compared with "estimated mpg" of other vehicles. Drivers may get different mileage depending on the speed they drive, weather conditions, trip length, condition of the vehicle and vehicle equipment. Mileage in actual driving will probably be less than EPA estimated fuel economy for highway driving.

RETAIL DEVELOPMENT
M/N 00623-97001-K

1 9 9 7 INTERIOR TRIM



TACOMA

EXTERIOR	CODE	INTERIOR	CODE	TACOMA CLOTH	SR5 V6 CLOTH
White	(045)	Gray	(11).....	■.....	■.....
		Oak	(44).....	■.....	■.....
Black Metallic	(204)	Gray	(11).....	■.....	■.....
		Oak	(44).....	■.....	■.....
Cardinal Red	(3H7)	Gray	(11).....	■.....	■.....
		Oak	(44).....	■.....	■.....
Sunfire Red Pearl	(3K4)	Gray	(11).....	■.....	■.....
		Oak	(44).....	■.....	■.....
Sierra Beige Metallic	(4M4)	Oak	(44).....	■.....	■.....
Evergreen Pearl	(751)	Gray	(11).....	■.....	■.....
		Oak	(44).....	■.....	■.....
Paradise Blue Metallic	(754)	Gray	(11).....	■.....	■.....
Cobalt Blue Pearl	(8K6)	Gray	(11).....	■.....	■.....
Lavender Steel Metallic*	(926)	Gray	(11).....	■.....	■.....

Notes:

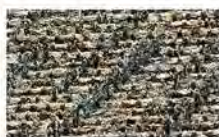
*New for 1997

Tacoma



Cloth

Gray (11)



Cloth

Oak (44)

SR5 V6



Cloth

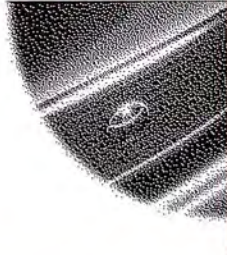
Gray (11)



Cloth

Oak (44)

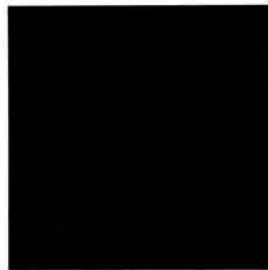
1 9 9 7
EXTERIOR
COLORS



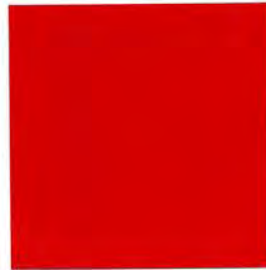
TACOMA



White (045)



Black Metallic (204)



Cardinal Red (3H7)



Sunfire Red Pearl (3K4)



Sierra Beige Metallic (4M4)



Evergreen Pearl (751)



Paradise Blue Metallic (754)



Cobalt Blue Pearl (8K6)



Lavender Steel Metallic* (926)

Notes:

*New for 1997

