



Supra

Product Source

---



## **Table of Contents**

Model Line-Up .....	2
Standard Features .....	3
Standard/Optional Features .....	5
Specifications .....	7
Features and Benefits .....	8
Safety .....	8
Performance .....	11
Comfort and Convenience .....	14
Styling .....	16
Quality/Dependability/Reliability and Value .....	18
Glossary .....	20

# Model Line-Up



## New for 1998

### Deleted Models

- Supra 5M (2398)
- Supra (Sport Roof) 5M (2393)

### All Models

- Standard torque-sensing (Torsen) limited-slip differential
- Standard rear spoiler
- New seating fabric
- New sporty 3-spoke steering wheel
- Revised front passenger air bag cover with "Supra" script
- New exterior colors
  - Quicksilver (1B9)
  - Imperial Jade Mica (6Q7)
- Deleted exterior colors
  - Alpine Silver Metallic (199)
  - Deep Jewel Green Pearl (6P3)

### Non-Turbo Models

- Standard 4ECTi automatic transmission with "Intelligence"
- Variable valve timing for improved performance
- Horsepower improved from 220 @ 5800 to 225 @ 6000 rpm
- Torque improved from 210 @ 4800 to 220 @ 4000 rpm
- Standard Premium AM/FM ETR/CD with 6 speakers
- Standard Premium 3-in-1 AM/FM ETR/Cassette/CD audio system with 7 speakers (Sport Roof model)
- Power front seats (Sport Roof model)
- Leather seating surfaces (Sport Roof model)

### Turbo Models

- Standard 17" polished aluminum alloy wheels
- Standard Premium 3-in-1 AM/FM ETR/Cassette/CD audio system with 7 speakers
- Power front seats
- Leather seating surfaces

## Body Styles and Trim Levels

Body Style	Trim Level	Trans.	Displacement	Cyl.	bhp	Model #
Supra	Supra	4ECTi	3.0 liter	6	225	2396
	Supra (Sport Roof)	4ECTi	3.0 liter	6	225	2394
Supra Turbo	Supra Turbo (Sport Roof)*	6M	3.0 liter turbo	6	320	2383
	Supra Turbo (Sport Roof)*	4ECTi	3.0 liter turbo	6	320	2387

\* Not available in areas requiring California emissions



# Standard Features

## Supra

### Mechanical

- 3.0-liter in-line 6-cylinder DOHC\* 24-valve EFI engine with variable valve timing (VVTi)
  - Acoustic Control Induction System (ACIS)
  - Automatic timing belt and fan belt tensioner
  - 2-piece oil pan
  - 90-amp alternator
  - Aluminum alloy fluid-filled engine mounts and crankshaft pulley
- Rear-wheel drive
- 4-speed electronically controlled automatic transmission with "Intelligence" (4ECTi)
- Torque-sensing limited-slip differential
- 4-wheel independent double-wishbone suspension
- Front and rear stabilizer bars<sup>1</sup>
- Front and rear subframes (aluminum alloy front for light weight)
- Vehicle speed-sensing progressive power rack-and-pinion steering
- Power-assisted 4-wheel ventilated disc brakes
- Twin piston front/single piston rear brake calipers with straight fins
- 4-wheel, 3-channel Anti-lock Brake System (ABS) with Control Logic
- Speed-rated steel belted performance radials
  - front: P225/50VR16
  - rear: P245/45VR16
- Temporary spare tire
- Vibration-damping steel (bulkhead and rear wheel wells)
- Aerodynamic underbody belly pan
- Composite-plastic fuel tank
- All-Weather Guard Equipment Package

### Exterior

- Halogen headlamps with projector-type low beam and fog lamps with auto-off feature (door-linked)
- Color-keyed bumpers and door handles
- Front air dam with engine/brake vents and black, flexible lower edge guard
- Aluminum alloy hood
- Flush-mounted High Solar Energy Absorbing glass (HSEA) (green)
- Dual color-keyed power mirrors
- Dual functional side vents (rear brakes/differential)
- 16" 5-spoke aluminum alloy wheels

- Deck lid LED-type Center High-Mount Stop Lamp (CHMSL)
- Front spoiler
- Rear spoiler
- Chromed stainless steel-tipped exhaust pipe
- Emblem (right rear): Supra

### Interior

- 2-way adjustable driver and front passenger seats (slide, recline) with integrated headrests
- One-piece folding rear seat
- Rear-passenger entry/exit device
- Cloth seat trim
- Leather-wrapped steering wheel and shift knob
- Passenger-side vanity mirror
- Vinyl headliner
- Lockable glove box with lamp
- Center console storage box with coin holder
- Passenger-side assist grip (A-pillar mounted)
- Rear coat hooks (2)
- Driver-side footrest
- Retractable cargo cover
- Cut-pile carpeting
- Fully lined cargo area with lamp
- Instrumentation: 180-mph electronic analog speedometer, dual digital tripmeters, digital odometer, tachometer, coolant temperature and fuel level gauges
- Warning lights: air bags, door ajar, brake, oil temperature, check engine, seatbelt disconnect, battery, oil level, taillamp, ABS, master warning light in tachometer and low fuel level
- Automatic air conditioning (CFC-free)
- Anti-theft system
- Power windows and door locks
- Cruise control/tilt steering wheel (3-spoke)
- Variable intermittent windshield wipers
- Rear intermittent windshield wiper
- Heavy-duty rear-window defogger with timer
- Digital quartz clock
- Map, ignition key, glove box, ashtray lights and door lamps
- Remote hood, fuel lid and trunk releases
- Valet trunk-locking system
- Power antenna
- Premium AM/FM ETR/CD with 6 speakers

\* Marketed as Twin-Cam

<sup>1</sup> Hollow stabilizer bars for less weight

# Standard Features

## Supra (Cont'd)

### Safety\*

- Driver and front passenger air bags (SRS)
- Seatbelts
  - Driver: 3-point with ELR
  - Outboard passengers: 3-point with ELR/ALR
- Energy-absorbing steering wheel and column
- Side-door beams

### Sport Roof model adds:

- Removable aluminum sport roof
- 3-way adjustable power driver and front-passenger sport seats (power: slide/recline; manual: seat cushion height)
- Leather seating surfaces
- Premium 3-in-1 AM/FM ETR/Cassette/CD audio system with 7 speakers

## Supra Turbo Differences vs Supra (Non-Turbo)

### Mechanical

- 3.0-liter in-line 6-cylinder DOHC\*\* 24-valve twin-sequential intercooled turbocharged EFI engine
  - Air-to-air intercooler
  - Toyota Direct Ignition (distributorless)
  - Engine oil cooler
  - 100-amp alternator
- 6-speed manual overdrive transmission
- Traction control (TRAC) with on/off button
- Sport-tuned suspension
- Larger power-assisted 4-wheel ventilated disc brakes
- 4-piston front brake calipers with spiral fins/twin-piston rear brake calipers
- 4-wheel, 4-channel Anti-lock Brake System (ABS) with Control Logic
- Speed-rated steel belted performance radials
  - front: P235/45ZR17
  - rear: P255/40ZR17
- Maximum speed limitation device at 155 mph

### Exterior

- Removable aluminum sport roof
- 17" 5-spoke polished aluminum alloy wheels
- Emblem:
  - Rear: Turbo



*Model shown may have optional equipment.*

### Interior

- 3-way adjustable power driver and front-passenger sport seats (power: slide/recline; manual: seat cushion height)
- Leather seating surfaces
- TRAC-OFF button with warning light
- Premium 3-in-1 AM/FM ETR/Cassette/CD audio system with 7 speakers
- Notes:
  - No turbo gauge available
  - Automatic transmission PRNDL instrument panel display with (4ECTi)
  - "MANU" indicator light with automatic transmission in manual mode

\* See "Safety" section beginning on page 8 for additional information

\*\* Marketed as Twin-Cam



# Standard/Optional Features

## Mechanical

	SUPRA/ SUPRA (SPORT ROOF)	SUPRA TURBO (SPORT ROOF)
• California emissions {CA}	O	NA
• Other state emissions {RE}	O	S†
• 3.0-liter in-line 6-cylinder DOHC* 24-valve EFI engine with variable valve timing	S	NA
• 3.0-liter in-line 6-cylinder DOHC* 24-valve twin-sequential intercooled turbocharged EFI engine	NA	S
-Air-to-air intercooler	NA	S
-Acoustic Control Induction System (ACIS)	S	NA
-Toyota Direct Ignition (distributorless)	NA	S
-Automatic timing belt and fan belt tensioner	S	S
-Engine oil cooler	NA	S
-2-piece oil pan	S	S
-Engine block heater	A	A
-90-amp alternator	S	NA
-100-amp alternator	NA	S
-Aluminum alloy fluid-filled engine mounts and crankshaft pulley	S	S
• Rear-wheel drive	S	S
• 6-speed manual overdrive transmission	NA	S
• 4-speed electronically controlled automatic overdrive transmission with "Intelligence" (4ECTi)	S¹	O¹
• Torque-sensing limited-slip differential {LD}	S	S
• Traction control (TRAC) with on/off button	NA	S
• 4-wheel independent double-wishbone suspension	S²	S²
• Sport-tuned suspension	NA	S
• Front and rear stabilizer bars	S³	S³
• Front and rear subframes	S⁴	S⁴
• Vehicle speed-sensing progressive power rack-and-pinion steering	S	S
• Power-assisted 4-wheel ventilated disc brakes	S	S⁵
• Twin-piston front/single-piston rear brake calipers with straight fins	S	NA
• 4-piston front brake calipers with spiral fins/twin-piston rear brake calipers	NA	S
• 4-wheel, 3-channel Anti-lock Brake System (ABS) with Control Logic	S	NA
• 4-wheel, 4-channel Anti-lock Brake System (ABS) with Control Logic	NA	S
• Speed-rated steel belted performance radial tires — front: P225/50VR16 — rear: P245/45VR16	S	NA
• Speed-rated steel belted performance radial tires — front: P235/45ZR17 — rear: P255/40ZR17	NA	S
• Temporary spare tire	S	S
• Vibration-damping steel (bulkhead and rear wheel wells)	S	S
• Aerodynamic underbody belly pan	S	S
• Composite-plastic fuel tank	S	S
• Maximum speed limitation device at 155 mph	NA	S
• All-Weather Guard Equipment Package {CK}	S	S

## Exterior

• Halogen headlamps with projector-type low beam and fog lamps with auto-off feature (door-linked)	S	S
• Color-keyed bumpers and door handles	S	S
• Front air dam with engine/brake vents and black flexible lower edge guard	S	S
• Aluminum alloy hood	S	S
• Aluminum alloy sport roof	NA/S	S
• Flush-mounted High Solar Energy Absorbing glass (HSEA) (green)	S	S
• Dual color-keyed power mirrors	S	S
• Dual functional side vents (rear brakes/differential)	S	S
• 16" 5-spoke aluminum alloy wheels	S	NA
• 17" 5-spoke polished aluminum alloy wheels	NA	S
• Alloy wheel locks {WL}	A	A
• Mudguards {MF}	A⁶	A⁶
• Deck lid LED-type Center High-Mount Stop Lamp (CHMSL)	S	S
• Front spoiler	S	S
• Rear spoiler	S	S
• Chromed stainless steel-tipped exhaust pipe	S	S

### Legend

S	Standard
O	Optional
A	Dealer/Port-Installed
NA	Not Available
{ }	Option Code

### Notes:

{CK} Includes heavy-duty: battery, starter, alternator, heater, and rear-window defogger with timer

† Not available in some states

\* Marketed as Twin-Cam

1 Includes manual shift mode

2 With aluminum alloy upper suspension arms for light weight

3 Hollow stabilizer bars for less weight

4 Front subframe made of aluminum alloy for light weight

5 Larger front spiral/rear straight vents

6 Front wheels only



# Standard/Optional Features

## Exterior (Cont'd)

	SUPRA/ SUPRA (SPORT ROOF)	SUPRA TURBO (SPORT ROOF)
• Emblem (right rear): Supra	S	S
• Emblem (rear): Turbo	NA	S
• Gold Appearance Package {GP}	A	A

## Interior

• 2-way adjustable driver and front-passenger seat (slide/recline) with integrated headrests	S/NA	NA
• 3-way adjustable power driver and passenger sport seat (power: slide/recline; manual: seat cushion height)	NA/S	S
• One-piece folding rear seat	S	S
• Rear passenger entry/exit device	S	S
• Cloth seat trim	S/NA	NA
• Leather-trimmed seats	NA/S	S
• Leather-wrapped steering wheel and shift knob	S	S
• Passenger-side vanity mirror	S	S
• Vinyl headliner	S	S
• Lockable glove box with lamp	S	S
• Center console storage box with coin holder	S	S
• Passenger-side assist grip (A-pillar mounted)	S	S
• Rear coat hooks (2)	S	S
• Driver-side footrest	S	S
• Carpeted floor mats {CF} (4-piece set)	A <sup>7</sup>	A <sup>7</sup>
• Retractable cargo cover	S	S
• Cut-pile carpeting	S	S
• Fully lined cargo area with lamp	S	S
• Instrumentation: 180-mph electronic analog speedometer, dual digital tripmeters, digital odometer, tachometer, coolant temperature and fuel level gauges	S <sup>8</sup>	S <sup>8,9</sup>
• Warning lights: air bags, door ajar, brake, oil temperature, check engine, seatbelt disconnect, battery, oil level, taillamp, ABS and master warning light in tachometer and low fuel level	S <sup>10</sup>	S <sup>10</sup>
• TRAC-OFF button with warning light	NA	S
• Automatic air conditioning (CFC-free)	S	S
• Anti-theft system	S	S
• Keyless Entry System {KE}	A	A
• Power windows and door locks	S <sup>11</sup>	S <sup>11</sup>
• Cruise control	S	S
• Tilt steering wheel (3-spoke)	S	S
• Variable intermittent windshield wipers	S	S
• Rear intermittent windshield wiper	S	S
• Heavy-duty rear-window defogger with timer	S	S
• Digital quartz clock	S	S
• Map, ignition key, glove box, ashtray lights and door lamps	S	S
• Remote hood, fuel lid and trunk releases	S	S
• Valet trunk-locking system	S	S
• Power antenna	S	S
• Premium AM/FM ETR/CD with 6 speakers {DV}	S/NA	NA
• Premium 3-in-1 AM/FM ETR/Cassette/CD Player with 7 speakers {DC}	NA/S	S
• Compact Disc Deck {P5}	A/NA	NA
• Auto-Reverse Cassette Deck {P4}	A/NA	NA
• 3-Disc CD {P3}	A/NA	NA

## Safety\*

• Driver and front passenger air bag Supplemental Restraint System (SRS) <sup>12</sup>	S	S
• Seatbelt, driver: 3-point with ELR <sup>13</sup>	S	S
• Seatbelt, outboard passengers: 3-point with ELR/ALR <sup>14</sup>	S	S
• Energy-absorbing steering wheel and column	S	S
• Side-door beams	S	S

### Legend

S	Standard
O	Optional
A	Dealer/Port-Installed
NA	Not Available
{ }	Option Code

### Notes:

- \* See "Safety" section beginning on page 8 for additional information
- 7 Available in Ivory or Black
- 8 Automatic transmission PRNDL instrument panel display with 4ECT/4ECTI
- 9 No turbo gauge available
- 10 "MANU" indicator light with automatic transmission in manual mode
- 11 With one-touch driver-side auto-down, two-turn locks, anti-lock-out feature, nighttime illumination and retained power function
- 12 Child seats should not be placed in front seat position
- 13 Emergency Locking Retractor (ELR)
- 14 Emergency Locking Retractor (ELR) / Automatic Locking Retractor (ALR)



# Specifications

## Mechanical

### Normally Aspirated

### Turbo

ENGINE		
Type	3.0-L I-6 <sup>1</sup> DOHC* 24-V EFI with variable valve timing	3.0-L I-6 <sup>1</sup> DOHC* 24-V Twin-Sequential Intercooled Turbocharged EFI
Horsepower (bhp @ rpm)	225 @ 6000	320 @ 5600
Torque (lb-ft @ rpm)	220 @ 4000	315 @ 4000
Bore x Stroke (in.)	3.39 x 3.39	3.39 x 3.39
Compression Ratio	10.0:1	8.5:1
Turbo Boost Pressure (PSI)	NA	11.6 <sup>2</sup>
MPG (EPA est. city/hwy)	4ECTi - 18/24	6M - 17/24 4ECTi - 18/23
Power-to-Weight Ratio	4ECTi - 14.5:1	6M - 10.8:1 4ECTi - 10.9:1
DRIVETRAIN		
Type	Front-engine / rear-wheel drive	Front-engine / rear-wheel drive
TRANSMISSIONS		
	-standard 4-speed ECTi automatic <sup>3</sup> overdrive with "Intelligence"	6-speed manual overdrive
	-optional NA	4-speed ECTi automatic <sup>3</sup> overdrive w/ "Intelligence" and TRAC <sup>4</sup>
Differential	-standard Torque-sensing limited-slip	Torque-sensing limited-slip
	-optional NA	NA
SUSPENSION		
Front/Rear	4-wheel ind. double-wishbone w/front/rear stabilizer bars and subframes <sup>5</sup>	Sport-tuned 4-wheel ind. double-wishbone w/front/rear stabilizer bars and subframes <sup>5</sup>
STEERING		
Type	Vehicle speed-sensing progressive power rack-and-pinion	Vehicle speed-sensing progressive power rack-and-pinion
Steering Ratio	17.5:1	17.5:1
Turning Diameter** (ft.)	35.8	35.8
Turns***	3.0	3.0
BRAKES†		
Front/Rear	4-wheel ventilated disc Twin-piston front/single-piston rear brake calipers Anti-lock Brake System (ABS) w/ Control Logic (4-wheel, 3-channel)	4-wheel ventilated disc (spiral vents/straight vents) 4-piston front/twin-piston rear brake calipers Anti-lock Brake System (ABS) with Control Logic (4-wheel, 4-channel)
WHEELS		
Type/Size	-front/rear Alloy / 8.0 x 16 / 9.0 x 16	Polished alloy / 8.0 x 17 / 9.5 x 17
TIRES		
Type	Speed-rated steel belted performance radials	Speed-rated steel belted performance radials
Size	-front/rear P225/50VR16 / P245/45VR16	P235/45ZR17 / P255/40ZR17
Spare	Temporary	Temporary
CAPACITIES		
Curb Weight (lb.)	4ECTi - 3265 <sup>6</sup>	6M - 3505 4ECTi - 3515
Weight Distribution	-front/rear 51% / 49%	53% / 47%
Fuel Tank (gal.)	18.5	18.5
PERFORMANCE		
0-60 mph (sec.)	6.8	4.8 <sup>7</sup>
1/4 Mile (sec.)	15.2	13.4 <sup>7</sup>
Braking (ft.)	150 (60-0 mph)	115 (60-0 mph)*
Skid pad (lateral G)	0.94	0.94 <sup>8</sup>
Max Speed (mph)	150	155 <sup>9</sup>

## Exterior

Wheelbase (in.)	100.4	100.4
Overall Length (in.)	177.8	177.8
Overall Width (in.)	71.3	71.3
Overall Height (in.)	49.8	49.8
Tread Width	-front/rear (in.) 59.8 / 60.0	59.8 / 60.0
Drag Coefficient (Cd)	0.33	0.33

## Interior

Seating Capacity	4	4
Head Room	-front/rear (in.) 37.5 <sup>10</sup> / 32.9	37.3 / 32.9
Leg Room	-front/rear (in.) 44.0 / 23.8	44.0 / 23.8
Shoulder Room	-front/rear (in.) 54.2 / 43.8	54.2 / 43.8
Hip Room	-front/rear (in.) 56.7 / 42.5	56.7 / 42.5
Trunk Capacity-seat up (cu. ft.)	10.1	10.1

## Safety††

### OCCUPANT RESTRAINT SYSTEMS

Air Bag (SRS)	Driver and front passenger	Driver and front passenger
Seatbelts	-driver 3-point with ELR <sup>11</sup>	3-point with ELR <sup>11</sup>
	-outboard passengers 3-point with ELR/ALR <sup>12</sup>	3-point with ELR/ALR <sup>12</sup>

### Notes:

NA	Feature not available	1	Cast iron engine block with aluminum alloy head	7	Car and Driver 3/97
—	Information not available	2	Combined boost pressure with both turbos operating	8	Motor Trend 5/97
*	Marketed as Twin-Cam	3	Includes manual shift mode	9	Actual mph is 180, but is limited to 155 mph in United States
**	Curb-to-curb	4	Traction control system	10	37.3 with Sport Roof
***	Lock-to-lock	5	Hollow stabilizers, aluminum alloy upper A-arms and front subframe for less weight	11	Emergency Locking Retractor (ELR)
†	Power-Assisted	6	3325 with Sport Roof	12	Emergency Locking Retractor (ELR)/Automatic Locking Retractor (ALR)
††	See "Safety" section beginning on page 8 for additional information				



# Features and Benefits



## Halogen Headlamps with Projector-Type Low Beams and Fog Lamps

The Supra's halogen headlamps **deliver a sharper, brighter light that shines farther than conventional lamps.** Integrated fog lamps help other drivers see the vehicle better during inclement weather.

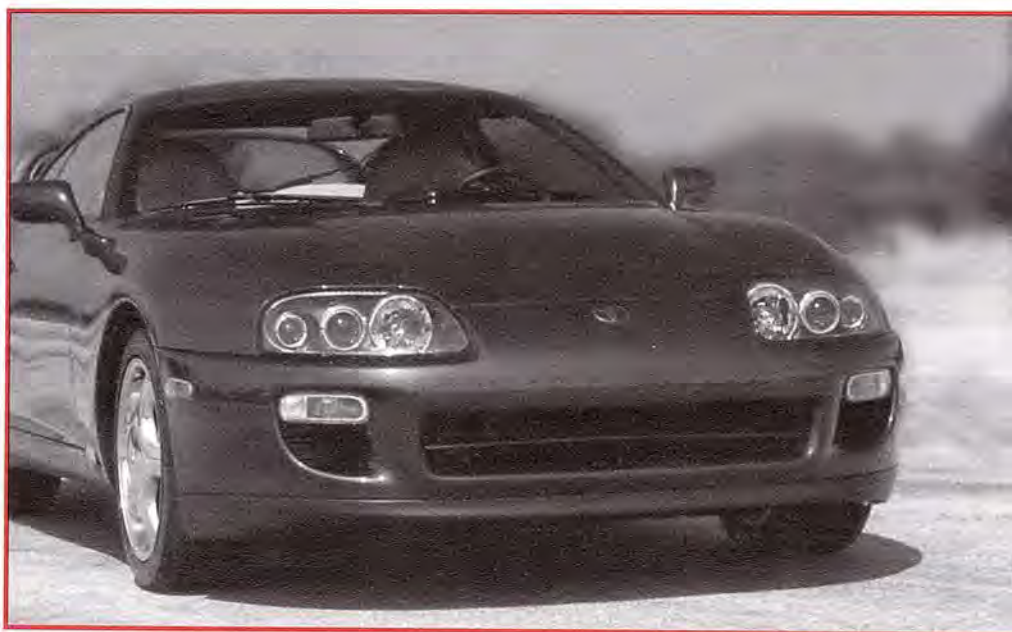
### Additional or Upgraded Items on Supra Turbo:

- **Spiral vents on larger front disc brakes** scoop air into the rotor to help cooling.
- **4-piston front and twin-piston rear calipers** on the brakes help increase stopping power.
- **Maximum speed limitation device** limits the top speed to 155 mph.
- **TRAC-OFF button** with warning light lets the driver know when the TRAC system is disengaged.

## Personal Security

The following standard or optional features provide customers greater feelings of "safety and security" every time they enter and use their Supra:

- **Low fuel-level warning light** indicates the need to refill the fuel tank.
- **Lights-on and key-in-ignition warning buzzers** remind the driver to turn off lights and remove the key from the ignition.
- **Two-turn power door locks** provide an extra level of security by opening the driver's door only when the key is inserted and turned once. A second turn unlocks the passenger door.
- **Anti-lock-out power door locks** prevent the doors from being locked if the key is in the ignition.
- **Passenger window lock-out system**, when used, disables the passenger window from being operated by anyone except the driver.
- **Valet trunk-locking system** provides a separate valet key that can only unlock the doors and operate the ignition. It cannot be used to unlock the rear hatch or glove box.
- **Auto-off headlamp system** turns off the lights when the ignition key is removed and the driver's door is open.





# Features and Benefits

## Performance



### KEY FEATURES

3.0-L I-6 DOHC\*  
24-Valve Provides  
Great Power and  
Performance

3.0-L I-6 DOHC\*  
24-Valve Twin Turbo  
Provides Awesome  
Power and  
Performance

Air-to-Air Intercooler<sup>1</sup>

4ECTi "Intelligent"  
Automatic  
Transmission

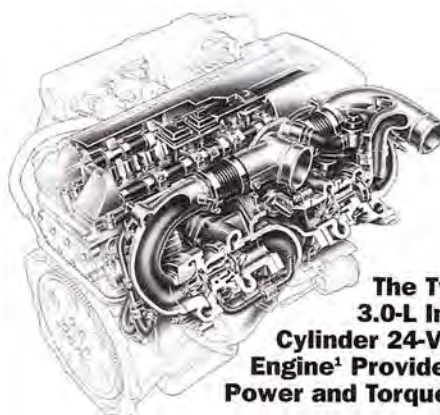
### BENEFITS

This Supra engine develops 225 hp and 220 lb-ft of torque while providing an EPA highway mileage estimate of 24 mpg\*\* with a 4ECTi automatic overdrive transmission. New for 1998, this engine adopts variable valve timing for improved performance.

This turbo engine develops 320 hp and 315 lb-ft of torque and includes twin-sequential turbochargers and an air-to-air intercooler.

Cools air coming out of the turbos so it becomes denser, allowing more to be forced into the engine cylinders to help increase engine power.

This transmission has a computer that networks with the engine's computer to provide nearly seamless gear changes that vary based upon driving needs.



**The Twin-Turbo  
3.0-L In-Line Six  
Cylinder 24-Valve EFI  
Engine<sup>1</sup> Provides Awesome  
Power and Torque**

This engine achieves 320 hp at 5600 rpm. Its torque is rated at 315 lb-ft at 4000 rpm. With a 4-speed ECTi "Intelligent" automatic overdrive transmission, it has an EPA highway mileage estimate of 23 mpg.\*\* This engine includes twin sequential turbochargers, an air-to-air intercooler, DOHC technology, 4-valves-per-cylinder, distributorless ignition and Electronic sequential Fuel Injection (EFI).

### Twin-Sequential Turbochargers<sup>1</sup>

A turbocharger is a pump designed to force a greater amount of air into the engine cylinders to help enhance the engine's torque and horsepower. The pump is operated by a finned turbine driven by the engine's exhaust gasses. The Supra's twin-sequential turbochargers work together in sequence to deliver outstanding power without turbo lag.

### Air-to-Air Intercooler<sup>1</sup>

Cold air is denser than warm air, thus more of it can be packed into an engine's cylinders. An intercooler helps the engine produce more power by cooling the charge of air coming out of the turbos before being forced into the cylinders. This denser, cooler air produces more of an explosive force in the cylinder that helps produce more horsepower and torque.

### Dual Overhead Cam (DOHC) and 4-Valves per Cylinder

This arrangement of two intake and two exhaust valves allows more fuel/air mixture into the cylinder for more efficient engine "breathing" and combustion. This helps produce greater horsepower and higher fuel economy. Toyota's DOHC eliminates moving parts such as rocker arms and push-rods to help make the engine smoother, quieter and more efficient.

## Drivetrain

### The 3.0L In-Line Six Cylinder 24-Valve EFI Engine Provides Excellent Power

New for 1998, this engine adopts variable valve timing for improved performance. It achieves 225 horsepower (hp) at 6000 rpm. Its torque is rated at 220 lb-ft at 4000 rpm. With a 4-speed ECTi automatic overdrive transmission with "Intelligence", it has an EPA highway mileage estimate of 24 mpg.\*\* Engine features include Electronic sequential Fuel Injection (EFI), Acoustic Control Induction System (ACIS), aluminum heads and Dual Overhead Cam (DOHC).

\* Marketed as Twin-Cam

\*\* See Mileage Statement on back cover

<sup>1</sup> Supra Turbo only



# Features and Benefits



## 4ECTi: The "Intelligent" Automatic Transmission

The 4ECTi transmission is **Toyota's most advanced automatic.** The transmission computer networks with the engine computer to control hydraulic shift pressure more precisely than ever. **It even adjusts for transmission wear over time.** Four specific features of the transmission are:



4ECTi with "intelligence"

1. **"Normal" and "Power" modes** allow the driver to choose between a sportier feel (stays in lower gears longer and downshifts more readily) or maximum fuel economy (upshifts sooner and downshifts less readily). Note: Mode selection is bypassed when the Avalon is under heavy acceleration. The speed of pedal depression automatically determines the sport or normal modes—the faster the pedal is depressed, the more aggressive the mode.
2. **Overdrive 4th gear** reduces engine rpm at highway speeds, which provides quieter driving and increased fuel economy.
3. **Overdrive-off switch** on the shifter, locks out the overdrive 4th gear. This prevents "gear hunting" when driving up a steep grade and adds engine braking when driving downhill.
4. **Shift shock control** momentarily selects a higher gear (other than first) when the gear selector is moved from "Neutral" or "Park" to "Drive." After that initial engagement, the computer engages first gear. Also, the engine and transmission computers communicate to momentarily retard ignition timing during all gear changes to lessen shift shock.

## Toyota Direct Ignition (Distributorless)<sup>1</sup>

Eliminating all moving parts (including the distributor cap and rotor) by placing a compact coil directly on each of the six spark plugs minimizes misfiring and loss of engine power and eliminates spark plug wires. **The result is improved performance, greater durability/reliability and reduced maintenance.**

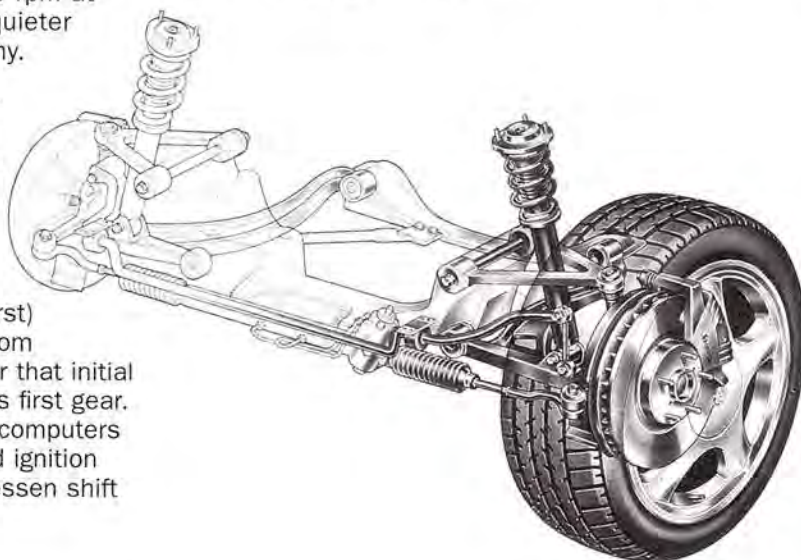
## Torque-Sensing Limited-Slip Differential

This limited-slip differential, now standard on all models, detects wheel spin and helps the Supra obtain better traction by sending power (torque) to the wheel that has the most grip. This helps improve handling, especially during cornering maneuvers.

## Chassis

### 4-Wheel Independent Double-Wishbone Suspension

Each front wheel is connected by ball joints to upper and lower A-arms (wishbones) of unequal length. Incorporated into the suspension system is anti-dive and anti-squat geometry. **This race-derived suspension system helps provide the Supra with the maximum tire footprint on the pavement to help enhance its high-performance handling capabilities.**



Front Suspension

1. Supra Turbo only

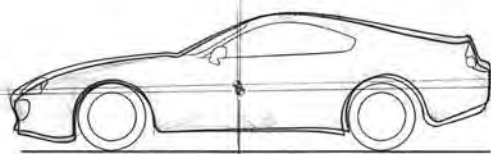
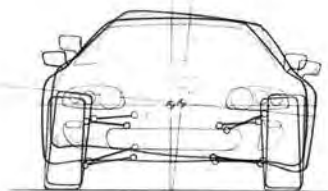


# Features and Benefits



## Front and Rear Stabilizer Bars

These suspension components **help reduce body roll (or leaning) while cornering.** They help provide the Supra with greater vehicle stability and driver control during cornering.



## Vehicle Speed-Sensing Progressive Power Rack-and-Pinion Steering

Rack-and-pinion steering is a **simple, precise steering system that is rugged and durable, and also helps provide outstanding steering response, excellent road feel and sporty handling characteristics.** Supra's advanced system "senses" the Supra's road speed and helps provide more assist at low speeds (parallel parking) and more road feel at higher speeds (highway cruising speed).

## Gas-Filled Shock Absorbers

Air bubbles in shock absorber hydraulic fluid cause a decrease in the shock's performance, known as shock fade. **Pressurized gas in the shock absorber helps prevent air bubbles from forming, making them more resistant to fading.** These shocks also provide excellent handling and control, and a smooth, comfortable ride.

## Reduced Weight

The Supra features several components that are made of aluminum to reduce weight and help increase performance:

- Hood
- Sport Roof
- Upper Suspension A-Arms
- Front Suspension Subframe
- Hydraulic Engine Mounts

Additionally, the fuel tank is made of a lightweight composite plastic.

## Rear Spoiler

A rear spoiler is standard on all models. It is **positioned high on the rear deck to help add strong aerodynamic downforce without blocking the driver's rear vision.** It is constructed of resin with hollow beads to reduce weight.





# Features and Benefits

## Comfort and Convenience



### KEY FEATURES

### BENEFITS

Power Driver's Seat<sup>1</sup>

Has power slide and recline and manual seat cushion height adjustment.

Fully Lined Cargo Area with Retractable Cover

Provides great space in the hatchback for cargo. Cover keeps cargo out of view and out of the sun's rays.

Front and Rear Subframes

Lightweight subframes help insulate the passenger cabin from engine and rear suspension noise and vibrations.

Many Standard Comfort and Convenience Features

A partial list includes CFC-free auto A/C, power windows and door locks, cruise control, tilt steering wheel and power antenna.

Standard Anti-Theft System

Helps deter thieves from attempting to steal the vehicle.

### 3-in-1 AM/FM ETR/Cassette/CD Player<sup>1</sup>

This system provides excellent sound reproduction with the high fidelity of the CD player and seven speakers (including a rear subwoofer) in the passenger cabin.

### Fully Lined Cargo Area with Retractable Cover

Cargo can be loaded easily into the hatchback and kept out of the sunlight with the retractable cover.

### Sound and Vibration Reduction

The Supra has many features that help reduce noise and vibrations in the passenger cabin. Following are four important items:

- **Flush-mounted, High Solar Energy Absorbing glass (HSEA)** helps reduce wind noise and helps keep the interior cooler.
- **Front and rear subframes** help isolate engine and rear suspension noise and vibration from the passenger cab.
- **Steel sheets applied to the floor and transmission tunnel** help reduce vibrations and absorb engine and road noise.
- Additional **sound insulating material** has been added to help reduce road noise.

### Seating

Supra with Sport Roof and Supra Turbo feature a **3-way adjustable power driver's sport seat** that provides excellent comfort and flexible accommodations. It includes a power slide and recline, and a seat cushion that can be adjusted manually. The '98 Supra now features **standard leather seat trim on non-Turbo models with Sport Roof**, in addition to all Turbo models.



The Supra features leather seat trim on Supra with Sport Roof and Supra Turbo models.

<sup>1</sup> Standard on Supra with Sport Roof and Supra Turbo models

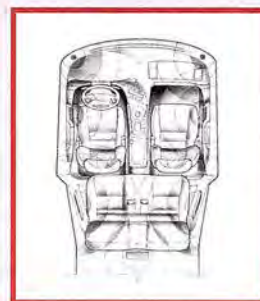


# Features and Benefits



## Standard Convenience Features on Supra and Supra Turbo:

- **Automatic air conditioning** helps keep the passenger cabin at a pre-selected temperature.
- **Power windows and door locks** provide extra convenience.
- **Cruise control** allows the driver to set a specific vehicle speed, which the vehicle will automatically maintain. This adds an extra measure of convenience and helps reduce driver fatigue on long trips.
- **New sporty 3-spoke tilt steering wheel** provides ease of entry and exit.
- **Heavy-duty rear-window defogger** helps provide better outward rear visibility.
- **Intermittent front and rear wipers** allow the driver to control wiper timing to suit weather conditions.
- The **digital quartz clock** is easy to read due to bright illumination.
- **Rear passenger entry/exit device** helps passenger enter and exit vehicle with ease.
- **Passenger-side vanity mirror** provides added convenience for passenger.
- **Center console storage box with coin holder** for convenient storage of loose items.
- A **Power antenna** can be retracted to help protect against car wash damage and potential vandalism.
- The **AM/FM ETR/CD with 6 speakers,<sup>2</sup>** and Premium 3-in-1 AM/FM ETR/Cassette/CD with 7 speakers<sup>1</sup> provides excellent sound and listening pleasure.
- **Leather-wrapped steering wheel and shift knob** provide a sporty, upscale look and comfortable feel.
- The **Anti-theft system** flashes the headlamps and taillamps and sounds the horn when a secured Supra is broken into.



<sup>1</sup> Standard on Supra with Sport Roof and Supra Turbo models  
<sup>2</sup> Standard on Supra without Sport Roof model



# Features and Benefits

## Styling



### KEY FEATURES

Aerodynamics

Dual Functional Side Vents

16-inch (Supra) and 17-inch (Supra Turbo) Aluminum Wheels

Close-Fit Body Panels

Optional Removable Aluminum Sport Roof

### BENEFITS

Improve air flow around the body which helps reduce wind noise, improve fuel economy and provide the Supra with a unique sporty appearance.

Provide an aerodynamic look and cool the air flow to the rear brakes.

These lightweight wheels help increase performance and provide an aggressive, sporty look.

Supra's narrow body gaps help provide an almost seamless look and help reduce wind noise.

The 12-lb roof can be removed easily to provide open cabin driving enjoyment.

### Flush-Mounted Glass and Windshield Moldings

These features provide a sleek, contemporary appearance, and help reduce wind noise in the passenger cabin.

### Dual Functional Side Vents

The side vents placed just in front of the rear wheels not only provide sporty styling, but are also very functional in helping to cool the rear brakes.

### Aluminum Wheels

The Supra has 16-inch 5-spoke aluminum alloy wheels that look great and are lightweight for improved performance.

The Supra Turbo has large 17-inch 5-spoke polished aluminum alloy wheels that help provide an even more aggressive, sporty appearance and performance.



Supra (Turbo) shown

## Exterior

### Aerodynamic Appearance

The Supra and Supra Turbo feature aggressive, sporty styling that sets them apart from the crowd. The aerodynamic shape of the vehicles helps provide them with a drag coefficient of .33. Horizontal taillamps with smoked outer covers help provide a cleaner, deeper, quality appearance. Aside from looking good, the vehicle's sleek appearance also helps reduce wind noise and improve fuel economy.





# Features and Benefits



## Close-Fit Body Panels

Tight tolerances between body panels provide the Supra with an almost **seamless, sleek look** and help reduce wind noise.

## Removable Aluminum Sport Roof

This 12-lb roof, standard on Supra Turbo models and optional on non-Turbo Supras, can be **removed easily** to provide an open-air cabin environment.



## Interior

### Instrument Panel Ergonomics and Appearance

Supra's ergonomics provide a cockpit-like environment for drivers. **The controls are easy to reach and operate, helping reduce driver fatigue.** In addition, instrumentation has been designed to be easy to see and read. **Now, for 1998, Supra features a sporty 3-spoke steering wheel.**

### Full Instrumentation

The Supra and Supra Turbo each have the following features:

- 180 mph speedometer
- Tachometer that measures rpm
- Digital odometer for quick, easy reading
- Digital tripmeters
- Coolant temperature and fuel-level gauges
- A comprehensive array of warning lights

# Features and Benefits

## Quality/Dependability/Reliability and Value



### KEY FEATURES

Rust Inhibitor Process

Gold-Plated Electrical Connectors

Toyota Direct Ignition (Distributorless)<sup>1</sup>

All-Weather Guard Equipment Package

### BENEFITS

A multi-step process that helps the body panels resist rust and maintain their like-new appearance.

Superior electrical conductors that resist corrosion and oxidation.

Coil placement directly on the six spark plugs helps increase reliability by eliminating moving parts and minimizing misfiring.

Helps increase reliability by providing heavy-duty battery, heater, starter, alternator and rear defogger.

## Dependability

### Each Car Goes Through An Extensive Rust Inhibitor Process

- Each Supra starts with **rust-resistant Excelite II steels** coated with a zinc and iron alloy. These are used for most inner and outer body panels. If a small scratch occurs, the Excelite II simply causes the paint to turn white and **helps protect the metal from rusting.**
- The body is fully dipped in a **phosphate bath** to make sure that even the **most inaccessible areas resist rust.**
- **Polyvinyl chloride (PVC) coating** helps protect the wheel wells and other areas of the body against chips that lead to rust.
- **Anti-chip paint** is applied to the front edge of the hood, the lower door panels and rocker panels to **help protect these areas from stone chips and other minor debris thrown from the tires.**

## Reliability

### Gold-Plated Electrical Connectors

Gold, one of the best electrical conductors, **resists oxidation and corrosion, thus greatly improving reliability.** These expensive terminals are used in vital circuits such as the fuel injection computer, oxygen sensor, and air bag sensor.

### Toyota Direct Ignition (Distributorless)<sup>1</sup>

Not only does this system improve performance (see "Performance" section), it also **results in greater durability and reliability** because all moving parts have been eliminated. In addition, **maintenance is reduced** because there is no distributor cap or rotor to replace during a tune-up.

### All-Weather Guard Equipment Package

Helps provide additional reliability with these five heavy-duty items:

- **Heavy-Duty Battery** provides sure starts in virtually any condition.
- **Heavy-Duty Heater** helps warm the Supra quickly and efficiently.
- **Heavy-Duty Starter** helps deliver excellent cranking power on cold mornings.
- **Heavy-Duty Alternator** helps provide reliable battery charging.
- **Heavy-Duty Rear Window Defogger** helps provide better visibility.

### Warranty

Toyota stands behind every Supra with a comprehensive limited warranty:

- 3 years or 36,000 miles (whichever comes first) of **basic coverage.**
- 5 years or 60,000 miles (whichever comes first) of **powertrain coverage.**
- 5 years unlimited mileage of **corrosion coverage.**

Toyota dealers have the complete details on warranty coverage.

<sup>1</sup> Supra Turbo only



# Features and Benefits

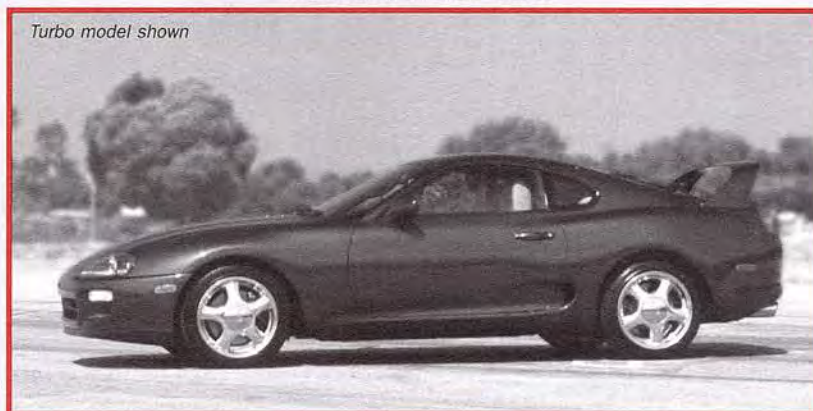


## Value

### IntelliChoice Value Accolades<sup>2</sup>

IntelliChoice is an independent company that publishes *The Complete Car Cost Guide*. This publication, available in many libraries, reports, analyzes and rates cost of ownership data. They provided the following assessments of the Supra:

### TOYOTA SUPRA:



**A BEST OVERALL VALUE among sport vehicles.**

#### Repairs

- Rating: Better Than Average
- On all Supra models, over 5 years

#### Drivetrain Warranty

- Rating: Excellent
- On all Supra models, over 5 years

#### Maintenance

- Rating: Better Than Average
- On all Supra models, over 5 years

#### Brake Service

- Rating: Excellent
- On all Supra models, over 5 years

### Projected Ownership Cost Savings vs Average

**Supra**  
**\$1,449\***

\*Approximate savings based on annual mileage of 14,000 miles for 5-year ownership period.

<sup>2</sup> From the 1997 edition of *The Complete Car Cost Guide*™, Copyright 1997 IntelliChoice, Inc.®, Campbell, CA.  
Internet Address <http://www.intellichoice.com>



## **Acoustic Control Induction System (ACIS)**

This system controls a butterfly valve within the intake manifold which when closed, effectively lengthens the intake runners for better low-rpm torque. The valve opens at higher rpm, effectively reducing the intake runner's length and increasing the flow of fuel and air into the engine for better response and power.

## **Air Bags, Dual (SRS)**

In vehicles equipped with an air bag Supplemental Restraint System (SRS), the air bag inflates with nitrogen gas within milliseconds to help limit the motion of the driver's head and upper torso to help prevent injury in a severe frontal impact. This system supplements, but does not replace, the 3-point seatbelt system, which provides primary protection. The air bag is not intended to operate during an impact other than a severe frontal impact, in which case the 3-point system is the only personal protection. In a severe frontal impact, sensors located in the center console (or floor tunnel), sense the impact and activate the air bag system. The air bag, which emerges from the steering wheel pad, then deflates within a few tenths of a second.

The front passenger air bag is usually incorporated into the top part of the passenger-side instrument panel. This air bag emerges from an air bag module that can usually be replaced without replacing the entire instrument panel. This bag is slightly larger than the driver-side air bag and when inflated, it limits the motion of the passenger's head and torso in case of a severe frontal impact. Do not place rearward-facing child seats in the front passenger seat. Serious injury or death can occur from the deploying air bag. Place children securely in the rear seat. See Owner's Manual for child seat usage.

## **Air-to-Air Intercooler**

Cools the air that a turbocharger forces into an engine. This makes the air denser, allowing more of it to be forced into the cylinders. The resulting dense fuel and air mixture has more explosive power in the cylinders thus helping provide greater horsepower and torque.

## **Anti-Dive and Anti-Squat Suspension Geometry**

Applying the brakes transfers a vehicle's energy forward causing the front end to dip down or "dive." Braking effectiveness is compromised when this happens. Squat occurs when a vehicle's energy is transferred to the rear when under sudden acceleration. This transfer causes the rear end to pitch down, reducing vehicle control. A car that handles well will have suspension components that reduce the amount of dive and squat.

## **Assist Grips**

Handles mounted on the inside roof of a vehicle, above the side windows. They provide a convenient place to grasp and gain leverage for entering and exiting the vehicle.

## **Automatic Transmission Shift Lock**

This safety device requires that the ignition is on and the brake pedal is depressed before the transmission lever can be moved into gear.

## **Axle Ratio**

The number of times the driveshaft rotates to turn the axle shaft one rotation. For example, if the driveshaft gear had 10 teeth and the axle shaft gear had 30 teeth, the driveshaft gear would have to turn three times to turn the axle shaft gear once. This translates to a ratio of three-to-one (3:1).

## **Brake Caliper**

The disc brake component that straddles the rotor and houses the piston, cylinder and brake pads. The piston movement pushes the pad against the rotor help to slow down or stop the vehicle.

## **Brake Caliper, Twin Piston/4-Piston**

High performance cars (or heavy-duty applications) often require multiple brake pistons at each wheel to multiply the force pressing the brake pads against the rotor to improve braking effectiveness. Most sports cars provide twin pistons up front and singles in the rear. The Supra Turbo utilizes four pistons in each wheel up front and two in the rear to help stop the car even when it reaches the tremendous speeds it is capable of achieving.

## **CFC-Free Air Conditioning**

Vehicle air conditioning system that uses R-134a refrigerant instead of CFC-based chemicals (usually known as Freon).

## **Clutch Start Switch**

This device in manual transmission equipped vehicles prevents the vehicle's starter motor from engaging unless the clutch is depressed. This prevents the vehicle from starting while in gear.

## **Compression Ratio**

A measurement of how tightly the air-fuel mixture is compressed or squeezed within the cylinder by the piston. This can be determined by taking the total volume of the cylinder when the piston is at its lowest point (Bottom Dead Center, or BDC) and dividing it by the volume when the piston is at its highest point (Top Dead Center, or TDC). In general, higher compression ratios yield greater power.



**Control Logic**

Control Logic measures the cornering forces acting on a car, and on the 4-channel ABS system, allows for each wheel to brake individually, helping improve control and handling (with the 3-channel ABS system, the rear wheels act together). This is especially important for high-performance cars because of weight shifts that occur during high-speed cornering.

**Crumple Zones**

These exist at the front and rear of a vehicle to help absorb the impact of a collision. These pre-stressed areas in the fender, hood, frame and related body components are designed to deform in a pre-determined manner during a collision. Their purpose is to lessen the force the impact transfers to the passenger compartment. In essence, the crumple zones of the vehicle are sacrificed to help protect the occupants.

**Double Overhead Cam (DOHC)**

An engine configuration with two overhead camshafts per row of cylinders. One camshaft operates the intake valves and the other operates the exhaust valves. This is the usual arrangement in engines with multi-valve cylinder heads. Compared to single overhead cam designs, the direct drive used in all Toyota DOHC engines requires fewer moving parts. It eliminates the rocker arm needed to activate the valves, thus improving efficiency and reducing vibration and noise. Compared to push-rod overhead valve (OHV) engines, which use an arrangement by which the camshaft is located in the engine block and opens the valves via long push-rods and rocker arms, it eliminates the need for both of these components. With fewer moving parts, there is less inertia. So, an overhead cam engine can run at a higher speed and produce more power than a comparably sized push-rod engine.

**ELR/ALR 3-Point Seatbelts**

The ELR (Emergency Locking Retractor) allows the driver seatbelt to extend and retract with occupant movement, yet locks the belt during a sudden stop or upon impact. The ALR (Automatic Locking Retractor) makes it possible to secure a child seat without using a seatbelt locking clip. To activate the ALR retractor, pull the shoulder belt all the way out, then allow it to retract to the desired length. Press down firmly on the child seat as the belt retracts to buckle the child seat securely in place. The ALR retractor is deactivated by unbuckling the belt and allowing it to retract fully. Do not place rearward-facing child seats in the front passenger seat. Serious injury or death can occur from the deploying of the air bag. Place children securely in the rear seat. See Owner's Manual for child seat usage.

**Fog Lamps**

Lights (separate from the headlamps) that provide a wide beam which enhances visibility during fog conditions. Usually mounted low, they should not be used in combination with the high-beam headlamps.

**4-Speed Electronically Controlled Automatic Transmission with "Intelligence" (4ECTi)**

The 4ECTi transmission is Toyota's most advanced automatic transmission. The transmission computer networks with the engine computer to control hydraulic shift pressure more precisely than even with the 4ECT. It also automatically adjusts for transmission wear over time.

**Halogen Headlamps**

Headlamps with special bulbs that provide brighter illumination than conventional bulbs, yet last longer and use less energy. They get their name from the halogen gas inside the bulb.

**High Solar Energy Absorbing Glass (HSEA)**

Helps keep interior cooler and helps reduce interior window fogging.

**Horsepower**

The measurement of the ability to do work over time. One horsepower is the amount of energy needed to raise 33,000 pounds a distance of one foot in one minute. Simply put, it is the engine performance rating that helps an engine maintain and maximize vehicle speeds.

**Hydraulic Shift Pressure**

Automatic transmissions operate by fluid pressures to engage and disengage the transmission's gears from the engine.

**Independent Suspension**

Each wheel of an independent suspension is sprung separately so that a bump affecting one does not affect the others.

**Overdrive Transmission**

Overdrive provides a final drive ratio of less than 1:1. This allows the engine to operate at lower rpm at highway cruising speed and helps provide greater fuel economy, quieter operation, and less wear and tear on the engine. It also helps a vehicle maximize top end speed.

**Passenger Window Lock-Out System**

When used, this optional system disables the passenger windows from being operated by anyone except the driver.



**Projector-Type Halogen Headlamps**

A unique type of headlamp that uses a specially shaped reflector to focus a beam for a sharper, brighter light that also shines farther. These lamps also have a unique, sophisticated appearance at night.

**Rack-and-Pinion Steering**

Consists of a round pinion gear attached to the steering shaft, and a flat bar with gear teeth cut into it, called the rack. The rack and pinion mesh at a point between the front wheels. As the steering wheel is turned, the shaft from the steering column turns the pinion gear, forcing the rack either right or left along a horizontal plane. The rack is linked to the wheels via tie rods, which push and pull the wheels to steer them. In general, rack-and-pinion steering is precise and responsive.

**Safety Glass (Laminated)**

Used in Supra windshields, it consists of two glass panes bonded together with a sheet of plastic sandwiched in between. This helps keep the glass together during an impact, reducing injuries from sharp edges.

**Safety Glass (Tempered)**

This heat-treated glass used in side and rear windows breaks into small blunt pieces when broken.

**Safing Sensor**

A sensor in a vehicle's air bag system designed to prevent inadvertent deployment.

**Side-Door Beams**

Required in all passenger cars by the federal government, these are steel beams inside the door that deflect certain types of side impacts. They help protect passengers from intrusion in certain types of side collisions.

**Speed-Sensing Power Steering**

The power assist to the steering is adjusted according to either engine speed or road speed. Assist is greatest at low rpm or road speed, such as when parallel parking. Assist is lowest when the engine or road speed is greatest such as when cruising at highway speeds.

**Subframe**

A frame separate from the vehicle's main frame, that supports specific vehicle components.

**Torque**

A force in a twisting motion. In an engine, torque is the twisting motion at the crankshaft measured in foot-pounds (lb-ft). One foot-pound is the force of one pound acting at right angles at the end of an arm one foot long. Simply stated, torque is the engine power that gets a vehicle to speed—felt especially at off-line take-off and during acceleration.

**Toyota Direct Ignition (Distributorless)**

Eliminates conventional components such as the cap and rotor. Each spark plug or pair of plugs gets its own coil. Each coil receives low voltage from conventional wires and turns this low voltage into high voltage, sending the pulse directly to the spark plug. Improved performance and durability are achieved.

**Traction Control (TRAC)**

As the Anti-lock Brake System (ABS) is to stopping, Traction Control (TRAC) is to acceleration. It can be thought of as "anti-spin acceleration." Through use of the ABS wheel sensors, individual wheel slippage is monitored. A computer relays this information and in return reduces engine power and applies a little brake pressure to control the individual wheel's slippage. By reducing slippage while accelerating, performance and control are improved in all weather and road conditions.

**Twin-Sequential Turbochargers**

The Supra Turbo uses two turbochargers that work together in sequence. The first unit in the sequence is small and light so it can spin up to speed almost immediately. This virtually eliminates turbo lag. The larger, second unit boosts power at higher rpm with the help of some sophisticated valves that remain closed while it (the second turbo) is getting up to boost speed. By letting the second turbo come up to speed separately, the power-robbing effect on the engine (from a slow turbo start-up) is reduced. The valves open when the second turbo is up to speed, increasing engine power output. The net effect is an almost instant turbo power boost that is sustained in an almost linear power curve. This means that once a driver begins accelerating he/she gets instant, powerful acceleration that does not drop off until additional power is no longer needed.

**Two-Turn Door Locks**

This option provides safety by unlocking the driver's door only when the key is inserted and turned once. A second turn unlocks the passenger door.



# Glossary

---

## **Valet Trunk-Locking System**

A locking system with two different keys. One key only opens the doors and operates the ignition. The second key opens all locks, including those for the glove box and trunk or rear hatch, and operates the ignition. The purpose is to provide a valet with a key that operates the ignition, but does not unlock the storage compartments. On cars with folding seatbacks, this locking system also includes special seat latches to help keep the contents of the trunk or hatch secure.

## **Ventilated Disc Brakes**

Vents in the brake rotor allow cooling air to pass through the hot disc. This helps reduce heat build-up and lessens the chance of the brake fading, glazing or warping.

# **N**otes

---





COPYRIGHT© 1998 TOYOTA MOTOR SALES, U.S.A., INC. ALL RIGHTS RESERVED. COPYING OR ANY OTHER REPRODUCTION, IN WHOLE OR IN PART, WITHOUT THE EXPRESS WRITTEN PERMISSION OF TOYOTA MOTOR SALES, U.S.A., IS STRICTLY PROHIBITED.

Toyota Motor Sales, U.S.A., Inc., by the publication and/or dissemination of this publication does not create any warranties, either expressed or implied, as to Toyota products. The information contained herein was up-to-date at the time of publication, but may subsequently be changed or added to without notice and without incurring any obligation. Reliance on this information creates no liability for Toyota.

This publication is produced solely for use as an informational sales aid. Toyota Motor Sales, U.S.A., Inc., its employees, representatives, and/or agents shall not be held liable for any omission of data or inclusion of erroneous data even where said omission is alleged to have been relied upon by a buyer of Toyota products. This publication and any material contained herein may not be reproduced without the prior written consent of Toyota's Training Department.

Any EPA fuel economy figures included in this publication are estimates to be compared with "estimated mpg" of other vehicles. Drivers may get different mileage depending on the speed they drive, weather conditions, trip length, condition of the vehicle and vehicle equipment. Mileage in actual driving will probably be less than EPA estimated fuel economy for highway driving.

Retail Development  
M/N 00623-98001-J