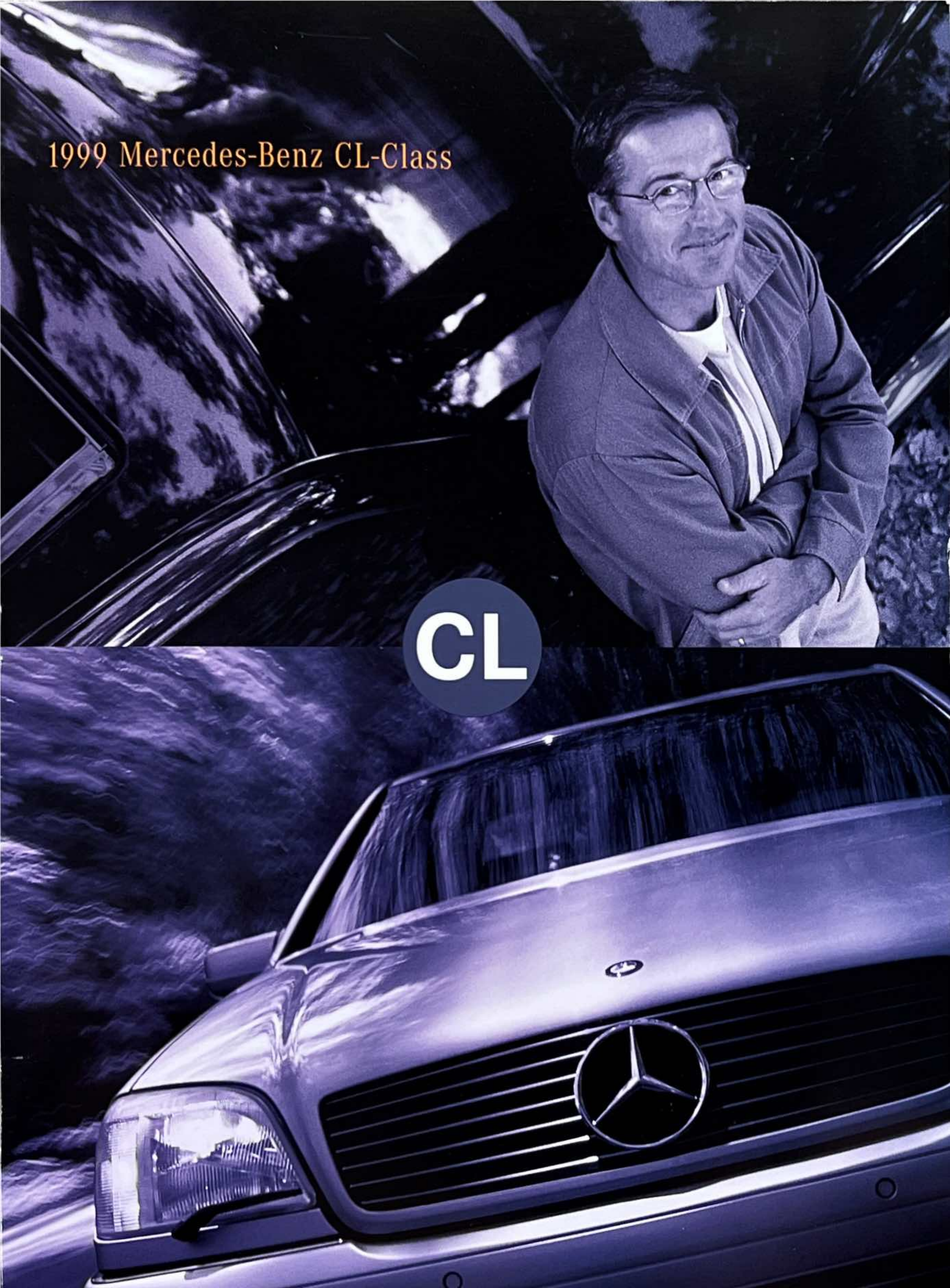
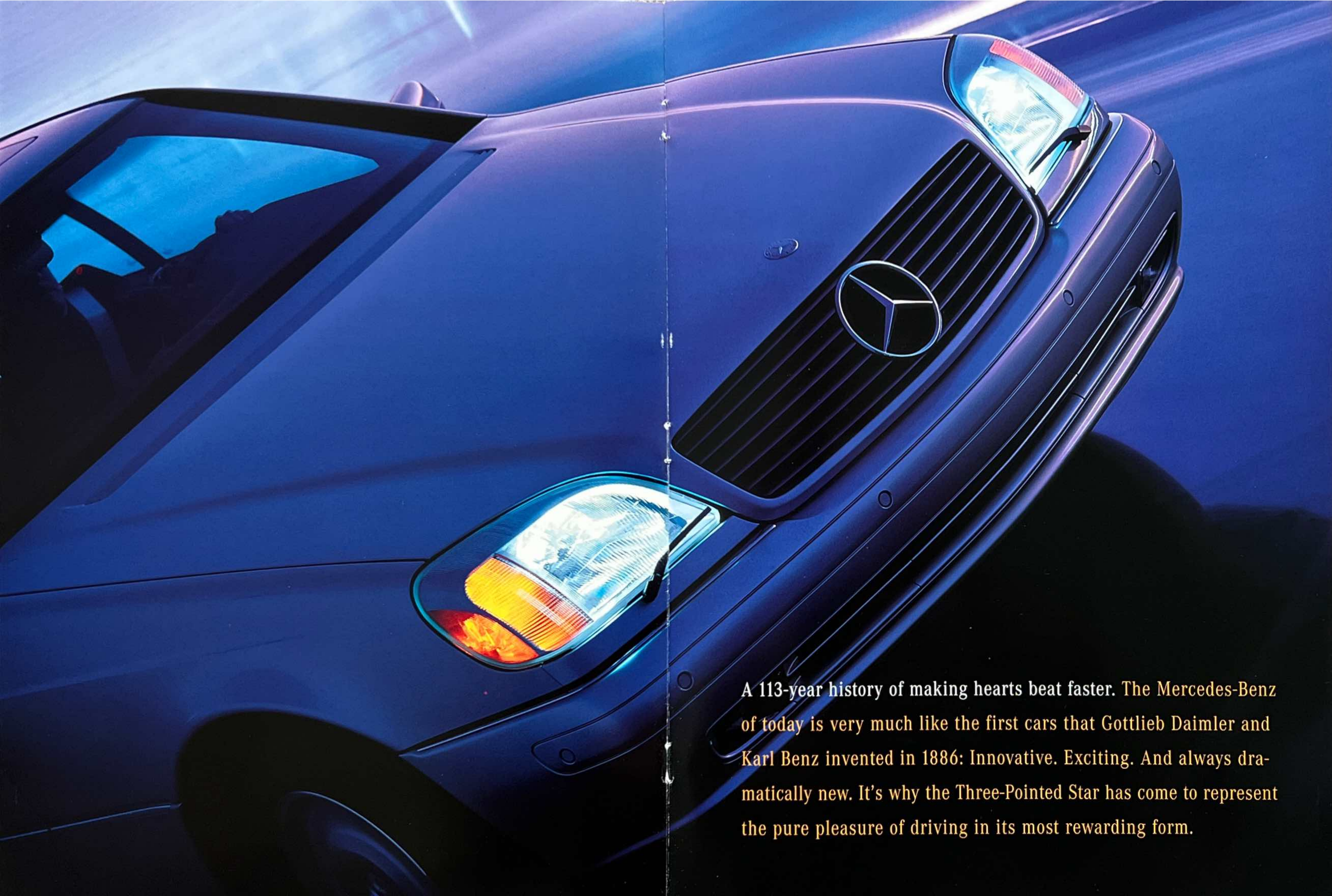


1999 Mercedes-Benz CL-Class

CL





A 113-year history of making hearts beat faster. The Mercedes-Benz of today is very much like the first cars that Gottlieb Daimler and Karl Benz invented in 1886: Innovative. Exciting. And always dramatically new. It's why the Three-Pointed Star has come to represent the pure pleasure of driving in its most rewarding form.

CL-CLASS | INTRODUCTION 2

Presenting the 1999 CL-Class. Celebrating the power and panache that have long made Mercedes-Benz coupes truly magnificent, the CL500 and CL600 remain true to their legacy. The only pillarless hardtops in production, they are true coupes created to the most exacting standards we can imagine. And as these machines suggest, we've got a pretty lively imagination.





The CL500. Nobody ever had to convince you that launching a 315-hp machine from 0 to 60 mph in 7.2 seconds¹ was going to be a lot of fun. Or that enthusiastically threading the snaky parts of your favorite river-canyon two-lane was a great way to spend a Sunday morning. And nobody needed to tell you that it's great having your friends constantly remind you how comfortable your car's Nappa leather upholstery feels and how its 11-speaker Bose® stereo sounds eleven times better than the one they've got at home. No one had to explain to you that a CL500 is a distinct, memorable presence — one look from any angle is all it took. And knowing that it's a Mercedes-Benz extends calm assurance to anybody about its outstanding safety engineering and build quality.

CL500 shown with dealer-installed accessory 18" AMG wheels.

¹ Stated rate of acceleration is based upon manufacturer's track results and may vary depending upon model, environmental and road surface conditions, driving style, elevation and vehicle load.



The CL500 features four individual seats. The rear seats are divided by a center console with a laser-cut walnut rolltop cover.

The CL500 interior keeps the noises of the outside world outside, preserving the pleasures of music and conversation.

The standard 11-speaker Bose® Beta sound system was tailored to the car's acoustics for faithful reproduction of high, low and midrange sounds to every seating position.

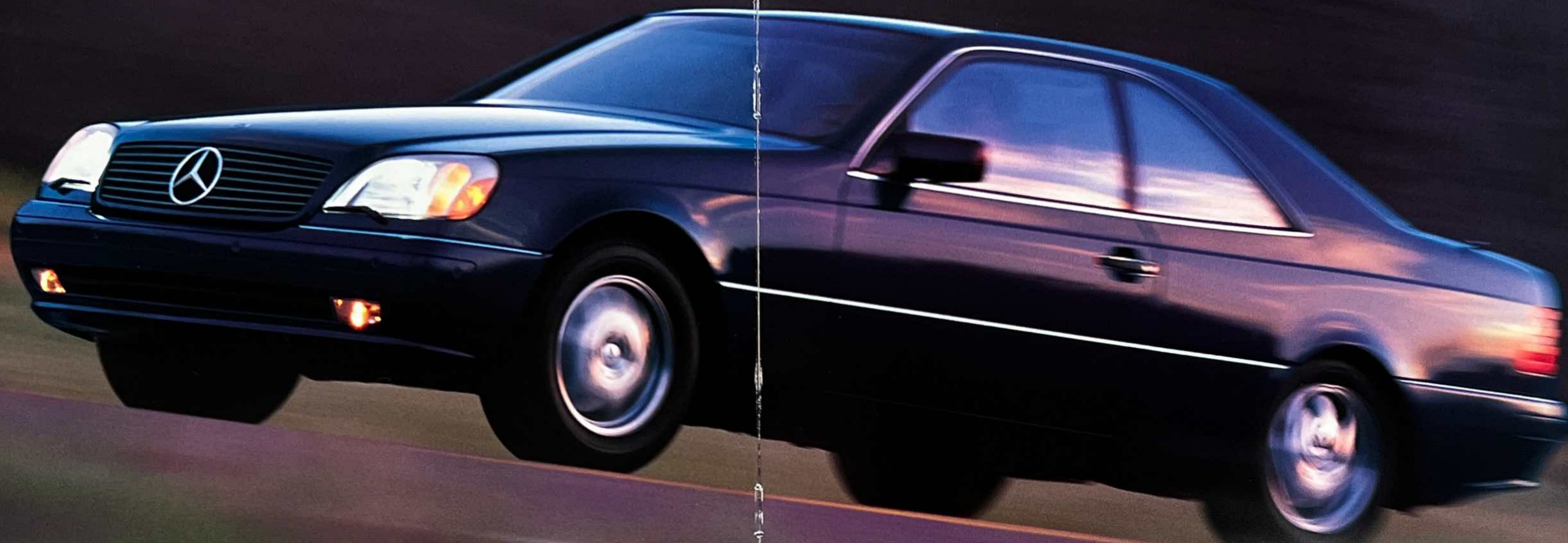
The CL500 arrives from the factory prewired for an optional voice-activated and hands-free docking portable cellular phone that is integrated with the car's audio system.

For safety reasons, we encourage the driver to stop the vehicle in a safe place before answering or placing a call. Always plug the phone into the cradle cord for use inside the vehicle. Operating a phone or radio transmitter with its own attached or built-in antenna while the engine is running can interfere with the vehicle's electronic systems.

The passenger cabin of a CL500 is crafted, not assembled. Yards of hand-stitched glove-soft Nappa leather, vat-dyed for consistent color, blend with polished burl walnut trim to evoke an era when marquetry and other intricate skills of coachbuilding were carried out by the hands of artisans.

The CL500's heated front seats are electrically adjustable 12 ways. Find your favorite seating position, then program it into the 3-position memory. All seats are covered in glove-soft Nappa leather and offer electrically adjustable head restraints for comfort and safety. Each front seat automatically glides forward when the seat back is tilted forward to let a rear passenger in or out, then resumes its position once returned upright. The dual-zone climate control has separate left and right temperature and air-flow settings and rear air vents, to cater to each individual. An electrostatic filter helps reduce the cabin's intake of dust, pollen, spores and some pollutants as small as 5 microns. A smog sensor automatically recirculates cabin air if an increase in carbon monoxide is detected. And there's a REST mode which provides warm air to the cabin for up to 30 minutes after you've turned off the engine. Conveniences include an integrated 3-button garage-door opener¹ and a new center armrest with innovative dual cupholders and storage for the optional portable cellular phone.

¹ May not be compatible with all opener systems.



"May be the best engine on the planet." — *CarSmart* on the CL500's 32-valve V-8

"Rough country roads were conquered with aplomb." — *Automobile Magazine*

First you hear it, then you feel it, then you're gone. Can anything launch you from a standing start or hustle you into the passing lane quite like a Mercedes-Benz V-8? The CL500's autobahn-bred engine pumps out 315 hp and 347 lb-ft of torque to the pavement via its 5-speed automatic—a transmission so sophisticated it senses whether you desire performance or a more easygoing attitude, then adjusts its shift pattern to match your mood.

Handling the most challenging roads shouldn't require manhandling your car. A sophisticated suspension and 235/60R16 tires on 16" alloy wheels make sure the CL500 adopts a self-assured, sports-car attitude into and out of corners. Its responsive, speed-sensitive power steering takes all the wrestle out of car control. The braking setup features massive ventilated discs, ABS and Electronic Brake Force Distribution to preserve maximum straight-line stopping efficiency. And when the going gets relaxed, the suspension can play that tune too, carrying up to four adults in unfettered comfort. Automatic rear-axle level control helps the CL500 maintain a consistent ride height, whether you're loading up the suspension with a little hard cornering or loading up the trunk with your latest acquisitions from the auction.



The CL-Class reflects four decades of Mercedes-Benz research into the causes of auto accidents. And more important, into helping drivers avoid them altogether.

Speed-sensitive power steering, 16" tires and rear-axle level control all contribute to the CL500's agile handling and cat-quick reflexes.

By braking the outside front wheel, ESP helps to correct oversteer (fishtailing).

ESP helps to correct understeer (plowing) by braking the inside rear wheel.

"ESP is one of the most significant automotive safety developments ever." — *Robb Report*®

BabySmart turns off the front passenger's air bag whenever you properly install a compatible accessory child seat.

WARNING: THE FORCES OF A DEPLOYING AIR BAG CAN CAUSE SERIOUS OR FATAL INJURY TO A CHILD UNDER AGE 13. THE SAFEST SEATING POSITION FOR YOUR CHILD IS IN THE REAR SEAT, BELTED INTO AN APPROPRIATE, PROPERLY INSTALLED CHILD SEAT, OR CORRECTLY WEARING A SEAT BELT IF TOO LARGE FOR A CHILD SEAT. A CHILD UNDER 13 MUST NOT USE THE FRONT SEAT UNLESS THE CHILD IS BELTED INTO AN APPROPRIATE, PROPERLY INSTALLED BABYSMART-COMPATIBLE CHILD SEAT. A CHILD UNDER 13 WHO IS TOO LARGE FOR A CHILD SEAT MUST NOT USE THE FRONT SEAT. SEE OWNER'S MANUAL FOR ADDITIONAL WARNINGS AND INFORMATION ON AIR BAGS, SEAT BELTS AND CHILD SEATS. BabySmart is a trademark of Siemens Automotive Company. The air bag depiction is an illustration that shows all four air bags at the moment of full inflation. Front air bags, once inflated, begin deflating immediately to provide a cushioning effect. The door-mounted side-impact air bags remain inflated after deployment.



Brake Assist and **BabySmart**™ expand upon two safety features found in every Mercedes passenger car—an Antilock Braking System (ABS) and air bags. **Brake Assist** senses emergency braking by the speed and force of the brake pedal application, and automatically delivers all available power brake boost—more quickly than the average driver might—until the pedal is released. Resulting in potentially shorter stopping distances.

Braking effectiveness also depends on proper brake system maintenance, and tire and road conditions.

Step inside the CL600 and the day's cares just fall away. Step on the accelerator and you thrust yourself into a very rare class of individuals: those who have felt the unquestioned authority of a Mercedes-Benz V-12 engine.





A luxury-car interior of the first order should be both a valet and a massage therapist. Inside the CL600, you'll discover just about every comfort and convenience in the Mercedes-Benz portfolio, from automatic presenters that offer the seat belts to the driver and front passenger, to four individual seats orthopedically designed for grand-touring ease.

The CL600 Coupe's interior is appointed with soft, smooth multi-tone Nappa leather on the seats. Suede covers the ceiling and pillars. Multicontour front seats adjust 16 ways to indulge the driver and front passenger. The CL600's steering wheel and shift knob are trimmed in Nappa leather and hand-polished burl walnut. Dual-zone climate control allows the front occupants to adjust the temperatures to suit their individual tastes. A music lover's dream, the 11-speaker Bose® Beta sound system includes a 6-disc CD changer. The system automatically mutes when the CL600's standard integrated docking portable cellular phone is in use.

The CL600 cabin is a study in handcrafted elegance.



For safety reasons, we encourage the driver to stop the vehicle in a safe place before answering or placing a call. Always plug the phone into the cradle cord for use inside the vehicle. Operating a phone or radio transmitter with its own attached or built-in antenna while the engine is running can interfere with the vehicle's electronic systems.



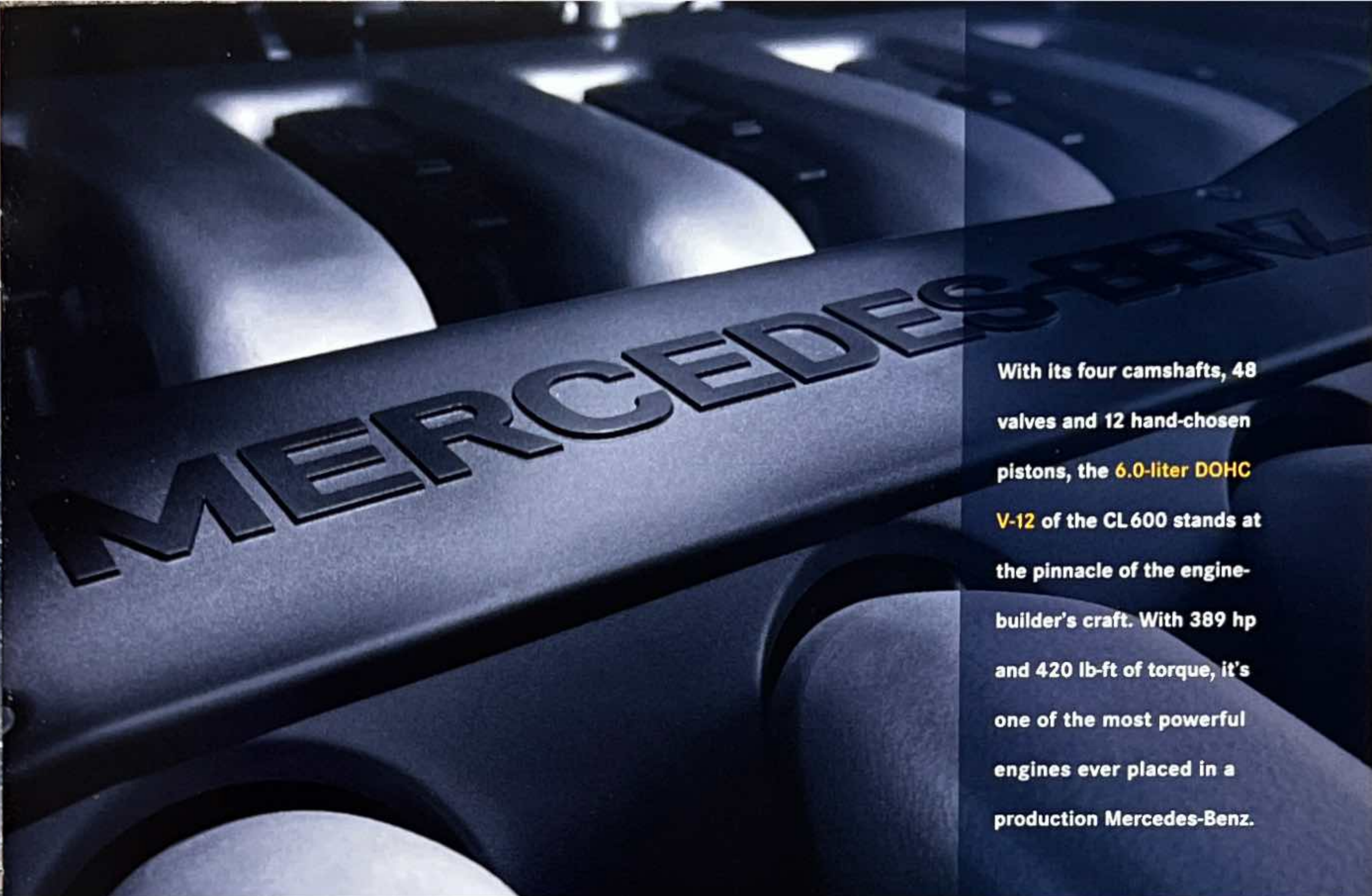
The CL600 has no trouble shaking off its luxury labels and carving up the best roads with its fully independent double-wishbone front/multilink rear suspension, 16" aluminum-alloy wheels and tires. The job of stopping the CL600 is efficiently handled by supercar-size disc brakes with Electronic Brake Force Distribution. Speed-sensitive power steering provides the balance of maximum feedback on the highway and maximum assistance in the parking lot.



"Who says a luxury car can't generate thrills?" — *Robb Report*® Magazine

Forget love. Forget money. It's torque that makes this world go round. And it's torque that makes the CL600 move out quickly. Its V-12 produces 420 lb-ft of torque at 3,800 rpm. Nobody matches its low-end torque in a production V-12. Not BMW. Not Ferrari. Not Lamborghini.

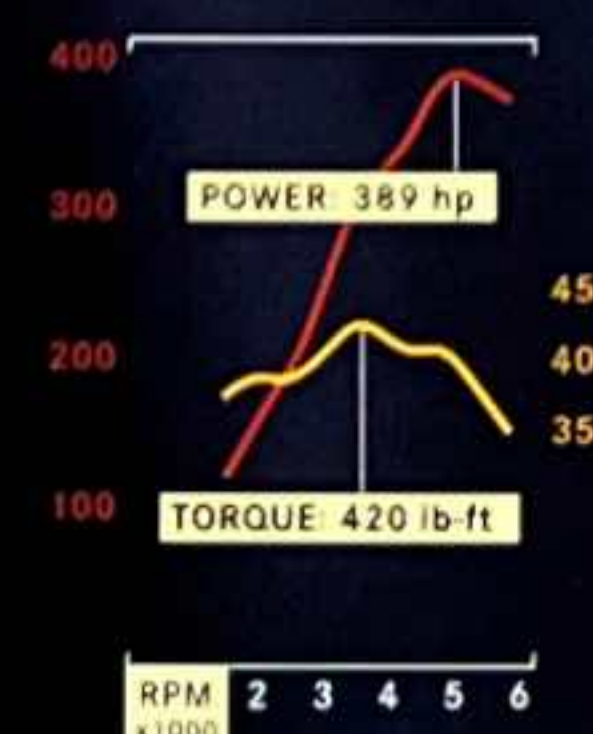
Comparison based on peak torque of 1999 CL600 versus 1998 competitors, based on information available at time of printing.



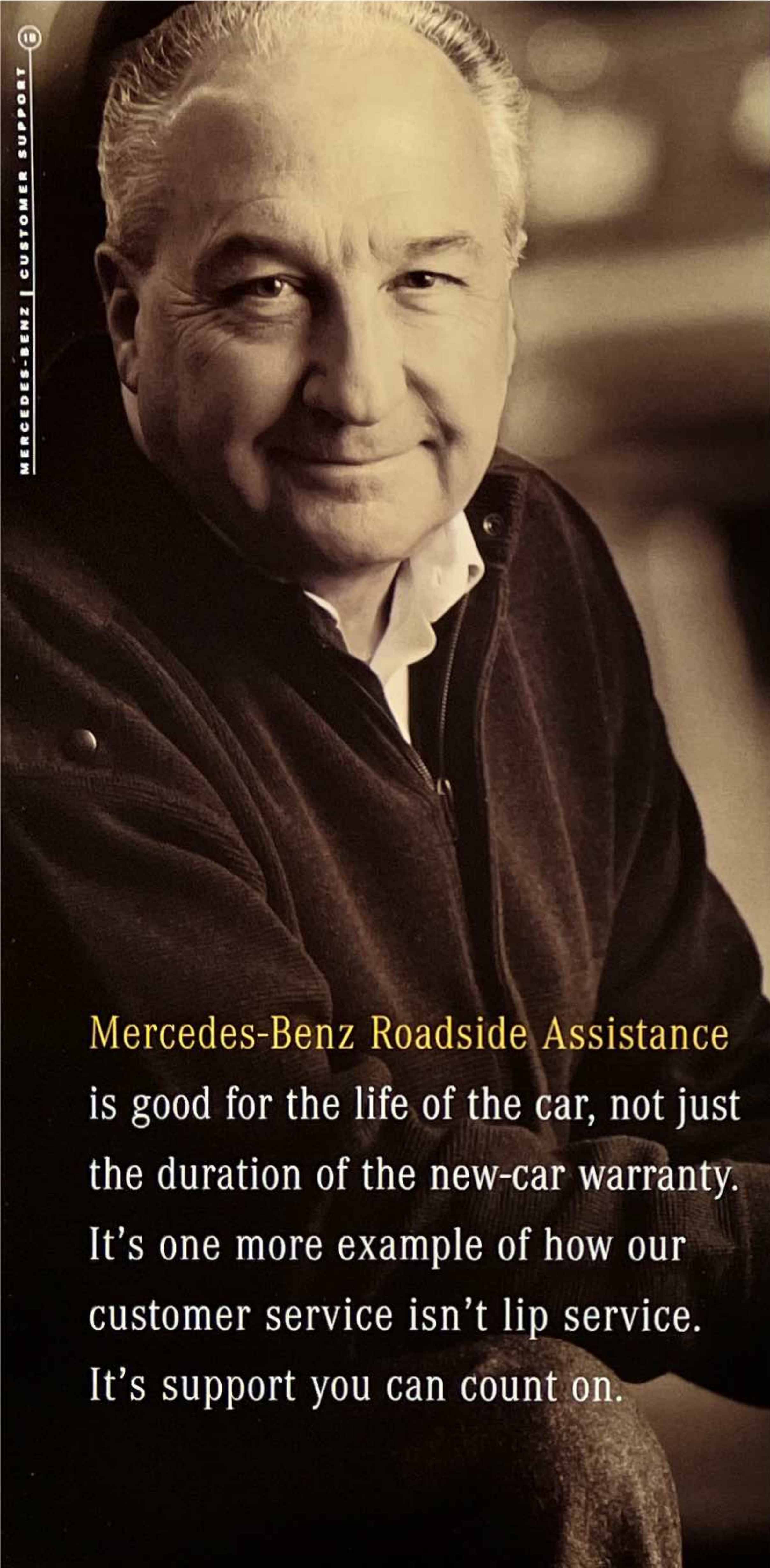
With its four camshafts, 48 valves and 12 hand-chosen pistons, the 6.0-liter DOHC V-12 of the CL600 stands at the pinnacle of the engine-builder's craft. With 389 hp and 420 lb-ft of torque, it's one of the most powerful engines ever placed in a production Mercedes-Benz.

"What sets this car apart from most others is its soul, manifested by the performance of a marvelous V-12." — *Road & Track*

The CL600's Adaptive Damping System automatically adjusts the coupe's shock absorbers for optimum ride and handling. Drivers can select from sport and comfort modes via a switch on the center console.



The flatter the torque curve, the better. And the lower the torque peak's rpm, the sooner you feel the CL600's smooth, certain acceleration. The lion's share of the torque is available across a wide section of the rev range. And with such high torque available at low engine speeds, your CL600 will feel right at home in the passing lane.



Mercedes-Benz Roadside Assistance is good for the life of the car, not just the duration of the new-car warranty. It's one more example of how our customer service isn't lip service. It's support you can count on.

Flexible Service System. Now your car's service needs can be based not just on mileage, but on actual driving conditions. This system tracks engine revs, load trends and engine temperatures to let you know precisely when the next routine service is due.

Mercedes-Benz Credit Corporation (MBCC). As the dedicated finance company for Mercedes-Benz, MBCC is committed to offering you the most advantageous, affordable and straightforward financing options. We've backed that up by creating *The First Class Lease*™ and *First Class Financing*™. Both are user-friendly and can be customized to meet your specific needs. To complement *The First Class Lease*, we've also created *The First Class Finish*™, the lease-end process with "no surprises." Ask your Mercedes dealer about the leasing and financing arrangements available through MBCC.

Mercedes Care. The Mercedes Care maintenance agreement lets you prepay for the routine services that are required under your car's maintenance guidelines. Because it's a prepaid plan, Mercedes Care lets you lock in these routine maintenance costs up front. And whether you plan to buy or lease, you can finance the cost of Mercedes Care as part of your overall agreement with MBCC. Ask your Sales Consultant to brief you on the many advantages of the Mercedes Care program.



Sign and Drive. This legendary Roadside Assistance service will change a flat tire with your existing spare, jump-start a dead battery, or bring some fuel for an empty tank, free of charge.¹

¹ Depending on the circumstances, these services may be provided by an outside service, courtesy of Mercedes-Benz Roadside Assistance. Roadside Assistance repairs may involve charges for service and parts. For full details of Sign and Drive services, as well as the Roadside Assistance Program, please see your dealer.

European Delivery. One of the oldest and most successful programs of its kind, the Mercedes-Benz European Delivery Program is a unique way to acquire your new Mercedes while enjoying an exciting driving tour of Europe. Ask your dealer about European Delivery.

Customer Assistance Center.

On call 24 hours a day to serve your needs, the Mercedes-Benz Customer Assistance Center (1-800-FOR-MERCEDES) can help answer questions about:

- Roadside Assistance
- Technical Issues
- Service Information
- Trip Routing
- New Model Information
- European Delivery

Parts and Service. Support for your Mercedes is provided by people trained to listen to your needs: our authorized dealers' expert Technicians, Parts Advisors and Service Advisors. And at each of more than 300 authorized dealers nationwide, you'll enjoy not just top-notch service, but surprisingly competitive parts pricing and labor rates as well.

Specifications

Engine and Drivetrain	CL 500 Coupe	CL 600 Coupe
Engine	4,973-cc DOHC 32-valve V-8, alloy cylinder block and heads	5,987-cc DOHC 48-valve V-12, alloy cylinder block and heads
Net power	315 hp @ 5,600 rpm	389 hp @ 5,200 rpm
Net torque	347 lb-ft @ 3,900 rpm	420 lb-ft @ 3,800 rpm
Compression ratio	11.0:1	10.0:1
Fuel, ignition and intake systems	ME 1.0 sequential multipoint fuel injection and ignition with antiknock control and electronic throttle. Variable intake-valve timing. Fuel requirement: Premium unleaded, 91 pump octane.	
Transmission	Driver-adaptive electronic 5-speed automatic. Driver-selectable winter mode starts vehicle moving in 2nd gear or a second Reverse gear to help improve take-off on slick surfaces.	
Rear axle ratio	2.65:1	2.65:1
Electronic Stability Program (ESP)	Optional ESP compares the driver's intended course, via steering and braking inputs, to the vehicle's response, via lateral acceleration, individual wheel speeds and rotation (yaw). ESP brakes individual front or rear wheels and/or reduces excess engine power as needed to help correct understeer (plowing) or oversteer (fishtailing).	Standard
Automatic Slip Control (ASR)	Standard ASR traction control senses drive-wheel slip and brakes the slipping wheel and/or reduces excess engine power until control is regained.	Incorporated in ESP

Chassis

Front suspension	Independent double wishbone with anti-dive geometry and stabilizer bar. Separate gas-pressurized shock absorbers and coil springs.	
Rear suspension	Independent 5-arm multilink with geometry for antilift, antisquat and alignment control and stabilizer bar. Separate hydropneumatic shock absorbers and coil springs. Automatic rear-axle level control.	
Adaptive Damping System (ADS)	Optional ADS automatically selects one of four damping profiles every time a shock absorber changes its direction of travel, and includes automatic level control.	Standard
Steering	Recirculating ball with speed-sensitive power assist, 3.2 turns lock-to-lock.	
Wheels	7.5Jx16 aluminum-alloy	
Tires	235/60R16 100H all-season steel-belted radial	
Brakes	2-circuit power-assisted ventilated front and rear discs. Antilock Braking System (ABS) and Electronic Brake Force Distribution.	
Brake Assist	Standard Brake Assist automatically applies maximum available boost when it detects emergency braking.	

Performance

Acceleration, 0-60 mph¹	7.2 seconds	6.3 seconds
Fuel economy, EPA estimate²	15 mpg	13 mpg
hwy estimate³	22 mpg	19 mpg

Dimensions

Wheelbase	115.9 in/2,945 mm	115.9 in/2,945 mm
Overall width	75.3 in/1,912 mm	75.3 in/1,912 mm
Overall length	199.4 in/5,065 mm	199.4 in/5,065 mm
Front track	63.2 in/1,606 mm	63.2 in/1,606 mm
Overall height	56.9 in/1,445 mm	56.9 in/1,445 mm
Rear track	63.5 in/1,613 mm	63.5 in/1,613 mm
Coefficient of drag	0.30	0.30
Curb weight	4,695 lb/2,130 kg	4,960 lb/2,250 kg
Turning circle	38.3 ft/11.7 m, curb-to-curb	38.3 ft/11.7 m, curb-to-curb
Front headroom	36.5 in/926 mm	36.5 in/926 mm
Front legroom	41.7 in/1,058 mm	41.7 in/1,058 mm
Front hiproom	56.7 in/1,440 mm	56.7 in/1,440 mm
Front shoulder room	61.7 in/1,566 mm	61.7 in/1,566 mm
Rear headroom	37.2 in/945 mm	37.2 in/945 mm
Rear legroom	31.5 in/800 mm	31.5 in/800 mm
Rear hiproom	53.1 in/1,350 mm	53.1 in/1,350 mm
Rear shoulder room	56.5 in/1,436 mm	56.5 in/1,436 mm
Cabin capacity	92.7 cu ft/2,625 liters	92.7 cu ft/2,625 liters
Trunk capacity	14.2 cu ft/404 liters	14.2 cu ft/404 liters

1 Stated rates of acceleration are based upon manufacturer's track results and may vary depending upon model, environmental and road surface conditions, driving style, elevation and vehicle load.
 2 1999 EPA estimated fuel economy figures. Compare the estimated mpg to the estimated mpg of other vehicles. You may get different mileage depending on how fast you drive, weather conditions and trip length.
 3 Your actual highway mileage will probably be less than the highway estimate.
 4 Compatible with many opener systems, including many HomeLink systems.
 5 Dealer-installed option, factory-installed when standard equipment. Installed stateside on European Delivery models.
 6 WARNING: THE FORCES OF A DEPLOYING AIR BAG CAN CAUSE SERIOUS OR FATAL INJURY TO A CHILD UNDER AGE 13. THE SAFEST SEATING POSITION FOR YOUR CHILD IS IN THE REAR SEAT, BELTED INTO AN APPROPRIATE, PROPERLY INSTALLED CHILD SEAT, OR CORRECTLY WEARING A SEAT BELT IF TOO LARGE FOR A CHILD SEAT. A CHILD UNDER 13 MUST NOT USE THE FRONT SEAT UNLESS THE CHILD IS BELTED INTO AN APPROPRIATE, PROPERLY INSTALLED BABYSMART-COMPATIBLE CHILD SEAT. A CHILD UNDER 13 WHO IS TOO LARGE FOR A CHILD SEAT MUST NOT USE THE FRONT SEAT. SEE OWNER'S MANUAL FOR ADDITIONAL WARNINGS AND INFORMATION ON AIR BAGS, SEAT BELTS AND CHILD SEATS. BabySmart is a trademark of Siemens Automotive Company.

■ STANDARD
 □ OPTIONAL
 - NOT AVAILABLE

Equipment

Exterior Features	CL 500	CL 600
Power tilt/sliding tinted glass sunroof.	■	■
Xenon High Intensity Discharge headlights. Halogen front foglamps. Heated headlamp washers with wipers. Single red rear foglamp. Rain sensor automatically adjusts intermittent wiper delay to rainfall. Heated windshield washers. Dual heated power mirrors with power fold-in feature and memory. Auto-dimming left-side mirror. Electrically heated rear window.	■	■
Parktronic electronic audio-visual parking assistance system.	■	■
Redundant-signal infrared/radio-frequency remote locking with anti-cloning safeguard. Selective unlocking of driver's door and fuel filler or both doors, trunk and fuel filler. Remote opening and closing of windows and sunroof. 4-button remote with trunk opener and panic button. Electronically coded key disables engine computer when removed.	■	■
Automatic antitheft alarm system. Remote illuminated entry. Night security illumination. 3-button garage door control. ⁴ Pneumatic door and trunk closing assist. Automatic retracting trunk handle.	■	■

Interior Features

100% CFC-free automatic climate control. Dual temperature and airflow controls. Electrostatic dust filter. Activated charcoal filter with smog sensor. Residual-heat REST mode. Sun sensor. Rear-cabin air vents.	■	■
Power dual-pane side windows, all with express-up/down. 4-way power steering column with memory. Electronic cruise control. Remote trunk opener.	■	■
Delayed-shutoff courtesy lamps. Front reading lamps. Illuminated visor vanity mirrors. Entrance lamps.	■	■
Front and rear center armrests with storage and dual cupholders.	■	■
Walnut-trimmed front center console storage compartment.	-	■
Walnut-trimmed rear center console storage compartment.	■	■
Electric rear-window sunshade.	□	■
Heated 12-way power front seats with 3-position memory and pneumatically adjustable lumbar support.	■	-
Heated multicontour power front seats with 3-position memory and pneumatically adjustable seat backs and side bolsters.	□	■
Front-seat courtesy folding feature for easier rear-seat access.	■	■
Individual rear seats with power-adjustable head restraints.	■	■
Leather-trimmed interior with Nappa leather seating areas.	■	-
Exclusive multi-tone leather-trimmed interior with Nappa leather seating areas, leather trim on dash and doors, and suede headliner.	-	■
Leather-trimmed steering wheel and shift knob. Burl walnut trim on doors, dash and console.	■	-
Leather and walnut trimmed steering wheel and shift knob. Burl walnut trim on doors, dash, console and shift gate.	-	■
Velour floor carpeting and floor mats.	■	■
Trunk cargo net.	■	■
11-speaker Bose® Beta sound system. Automatic speed-sensitive volume adjustment. AM/FM stereo/weatherband radio with autoreverse cassette player and antitheft coding.	■	■
Integrated trunk-mounted 6-disc CD changer. ⁵	□	■
Integrated docking portable cellular telephone. ⁶	□	■

Instrumentation

Electronic analog speedometer, tachometer, and gauges for fuel level, coolant temperature, oil pressure and fuel economy. Electronic digital odometer, resettable trip meter, quartz clock and outside temperature indicator. Flexible Service System.	■	■
Warning lights for unfastened seat belt, exterior light bulb failure, brake system/parking brake, front brake pad wear, self-diagnosis of SRS, ABS, ASR/ESP, Brake Assist, engine electronics, and low fuel, engine oil, coolant and washer fluid.	■	■
Audible alert to release parking brake and turn off headlights.	■	■

Restraint Systems

Supplemental Restraint System (SRS): Driver and front passenger are each provided with a front air bag, door-mounted side-impact air bag, knee bolster, and seat-belt Emergency Tensioning Retractor (ETR). Front passenger seat occupancy sensor.	■	■
3-point seat belts with automatic front seat-belt presenters.	■	■
BabySmart™ system automatically deactivates front passenger's front air bag when a BabySmart-compatible child seat is properly installed. ⁶ Selectable passenger seat-belt retractors.	■	■

Optional Equipment

Electronic Stability Program (ESP).	□	■
Adaptive Damping System (ADS).	□	■
Electric rear-window sunshade.	□	■
Multicontour front seats (available individually).	□	■
Integrated trunk-mounted 6-disc CD changer. ⁵	□	■
Integrated docking portable cellular telephone. ⁶	□	■

PAINT COLORS

		
040 Black	143 Glacier White	189 Black Opal ¹
		
197 Obsidian Black ¹	339 Royal Indigo ¹	366 Azure Blue ¹
		
702 Smoke Silver ¹	721 Moonstone Grey ¹	744 Brilliant Silver ¹
		
891 Aspen Green ¹	904 Midnight Blue	

LEATHER UPHOLSTERY COLORS

			
Black ²	CL 500	Parchment ²	CL 500
			
Blue ²	CL 500	Grey ²	CL 500
			
Black ³	CL 600	Parchment ³	CL 600
			
Grey ³	CL 600		

1 Metallic paint (no charge)
 2 CL 500 features premium Nappa leather seating areas.
 3 CL 600 features exclusive multi-tone leather interior trim with premium Nappa leather seating areas.



SLK

CLK

SL-Class

C-Class

E-Class

CL-Class

S-Class



Mercedes-Benz

Mercedes-Benz of North America, Inc.

One Mercedes Drive

Montvale, NJ 07645

1-800-FOR-MERCEDES

www.mbusa.com

Printed in U.S.A.

© 1998 Mercedes-Benz of North America, Inc.

Member of the Daimler-Benz Group

Marketing Communications MC-98-914-25

All illustrations and specifications contained in this brochure are based on the latest product information available at the time of publication. Mercedes-Benz reserves the right to make changes at any time, without notice, in colors, materials, equipment, specifications and models. Any variations in colors shown are due to reproduction variations of the printing process. Illustrations may include test situations. Some automobiles may be shown with non-U.S. equipment. Some models may be shown with optional equipment.



In an effort to minimize the environmental impact of this brochure, Mercedes-Benz uses a recycled #1 grade coated paper that is guaranteed in writing to contain a minimum of 10% post-consumer waste.