


SEVILLE 2000





Somewhere under the stars,
heavenly or man-made,
there is a time and place where beauty and technology coalesce.
It is a convergence of the sensuous and functional.
This is the place where art melds with science.

POWER & GLORY



BODY & SOUL



The character of Seville is apparent in its visible details. It is the completeness of this car's performance that defines its substance - and defies would-be competitors.



The visceral thrill of the drive, and the intellectual satisfaction of confident control: Both are delivered in Seville through such advanced technologies as the Northstar, StabiliTrak and OnStar systems.



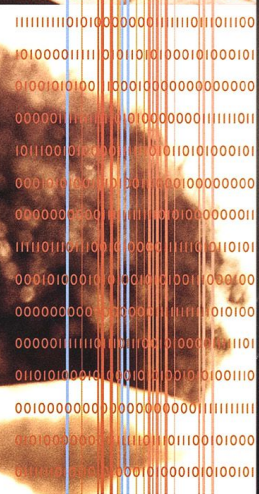
BEAUTY & THE BEAST

At the heart of its muscular, well-crafted body, the STS harbors the ultimate expression of its performance-oriented personality: a V8 engine that produces 300 horsepower. This advanced 32-valve engine is the soul of the Northstar System, the mechanical epicenter that puts every Northstar feature to efficient use on the road.





Inside and out, Seville's interior recognizes the sensory value of premium materials, fluid shapes and intuitive operation. The STS puts richly finished, real wood and soft leather in your hand at every opportunity. But beyond beauty, Seville's interior works as finely as you'd expect it to - perhaps even more so with the newly available touch-screen Navigation System.

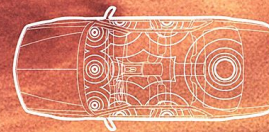


This same appealing attention to materials, textures, appearances and function encompasses the entire interior of Seville.





THE SOUND & THE FURY



Seville's Bose 4.0 music system, standard on STS and optional on SL5, sets a high standard for automotive music systems.

The 425-watt system uses both acoustics and "psychoacoustics," mapped out through every

surface of Seville's interior, to deliver optimal tonal accuracy and precise sound reproduction. The Bose 4.0 music system uses a cabin microphone to monitor interior sound levels and modulates the system's volume to compensate. When tuned to participating FM stations, Seville STS's innovative Radio Data System (RDS) can display song title and artist names, automatically scan for a preferred style of music, or suspend music listening for emergency messages, traffic or weather reports.

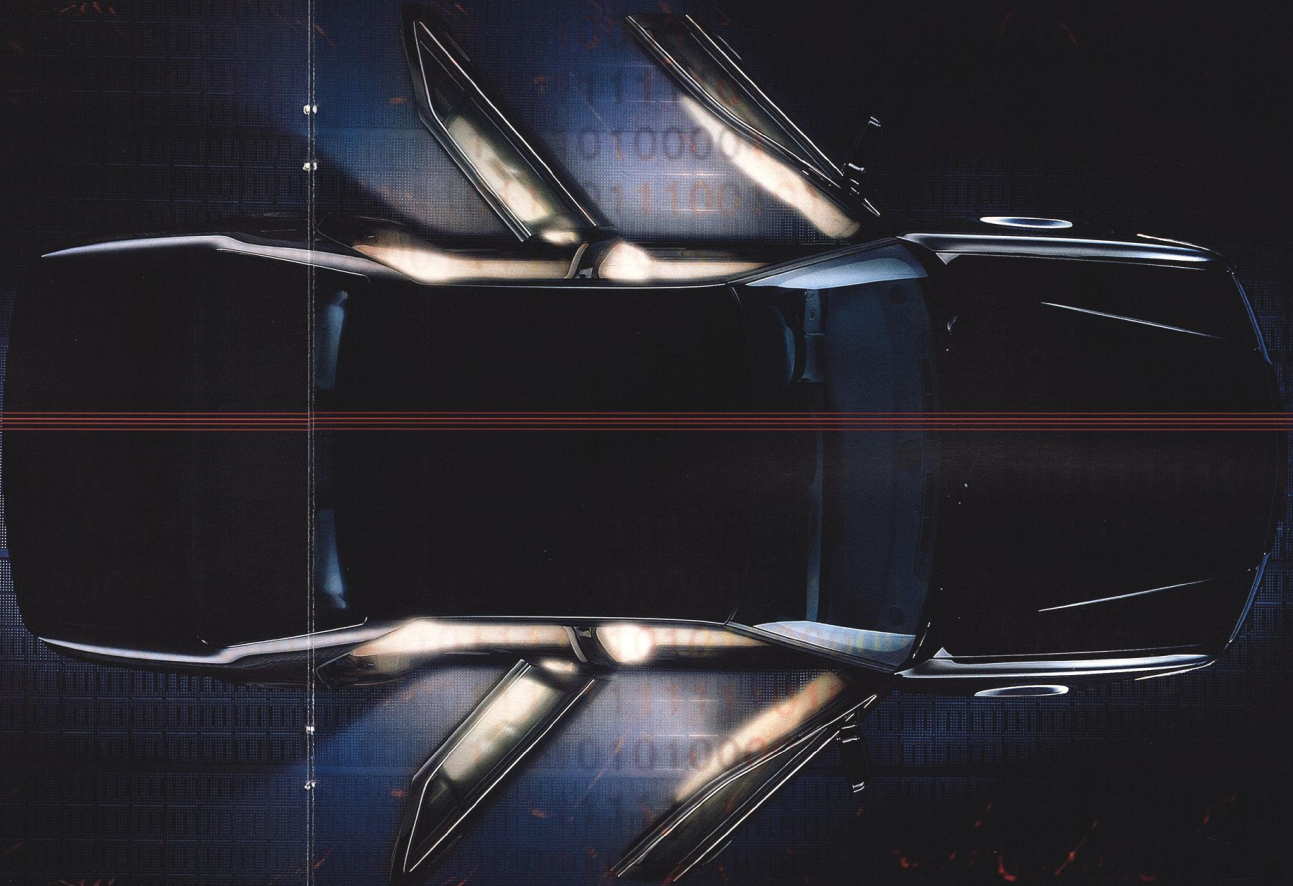
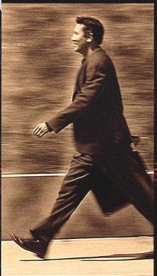
ASKED & ANSWERED



Seville SLS does more than deliver standards - it sets them. In what other luxury vehicle would you find such a complete and compelling blend of standard style and technology? Seville SLS offers the impressive performance benefits of the newly enhanced Northstar System and its adjunct technologies, the remarkable convenience of individually programmable memory features, and its purposeful yet indulgent premium features.



The interior of the Seville SLS provides an environment as sensible as it is sensual. For instance, its hand-crafted Zebrano wood trim reflects a natural beauty, while its Nuance leather-trimmed seating areas hold you to provide a comfortable and in-control feeling. The front seats also include articulated head restraints and power adjusters and recliners for an added level of comfort and control...just another example of how Seville works for you.



Look beyond the obvious;

beyond Seville's wood and leather and beauty.

What you'll find is engineered strength, power and control -

characteristics that will help

keep you on the road through the tough times,

as well as the easy.

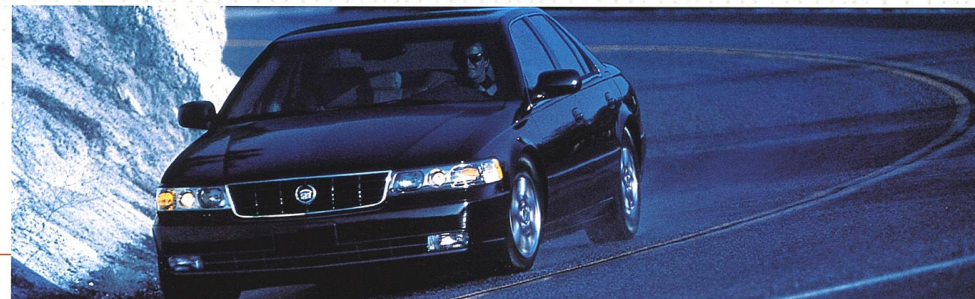
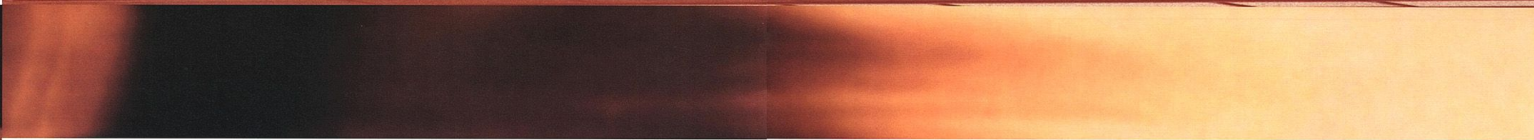




DRIVE & DETERMINATION



It is a technological marvel, integrating a myriad of high-performance technologies to serve one master, the Seville driver. The acclaimed Northstar System coordinates Seville's advanced V8 engine, anti-lock braking system, all-speed traction control, StabiliTrak 2.0 stability enhancement, continuously variable road-sensing suspension (CVRSS 2.0), Magnasteer rack-and-pinion power steering, and four-speed automatic transmission. This unique and improved combination of features makes for a fully integrated vehicle response system that redefines the notion of driving dynamics.

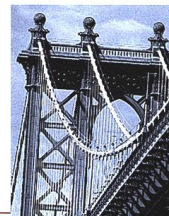


At the heart of the Northstar System is its enhanced-for-2000 4.6 liter

double-overhead cam V8: a premium powerplant that is now quieter, cleaner running and more efficient* than ever before. In the STS, this reengineered 32-valve, port fuel-injected engine produces 300 horsepower and 295 ft-lbs of torque...on regular unleaded gasoline. The engine achieves such high levels of performance by micromanaging and precisely adjusting critical systems - spark, fuel-air mix, etc. - to match driving conditions moment to moment. Northstar's capabilities even include the ability to continue powering Seville for a limited range without a single drop of coolant in the radiator. Purposeful technology is the premise behind Seville's engineering achievements.

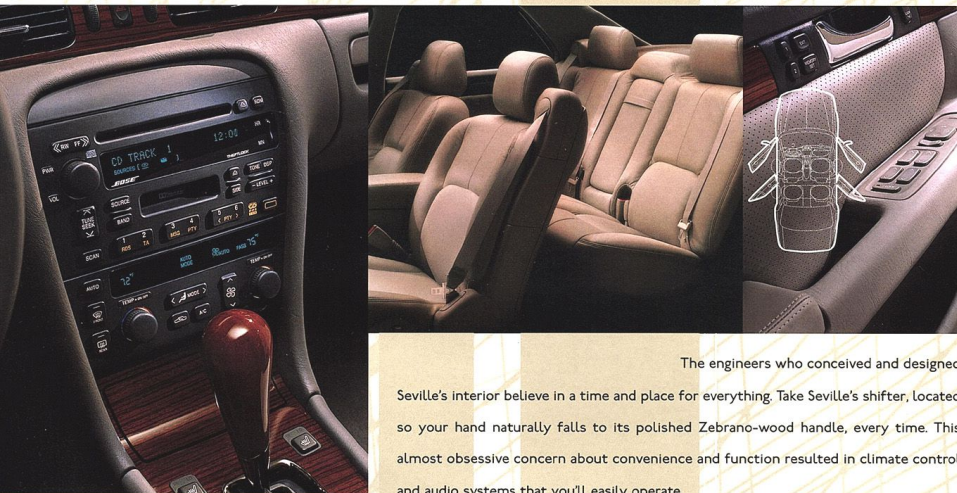
*EPA est. mpg: 17 city/28 hwy.

BRAINS & BRAWN



Loss of traction and control are a driver's enemy. This fact is why Seville is equipped with StabiliTrak 2.0 - a stability control-enhancing system. StabiliTrak 2.0, part of the Northstar System, monitors and analyzes vehicle dynamics. If a loss of control is detected, StabiliTrak 2.0 directs a bit of braking force to the appropriate front brake. This helps bring Seville back on track, under the driver's control. StabiliTrak 2.0 operates continuously at any speed, so whenever a curve or slippery road conditions threaten to diminish driver control, the system automatically helps guide you through.





The engineers who conceived and designed Seville's interior believe in a time and place for everything. Take Seville's shifter, located so your hand naturally falls to its polished Zebrano-wood handle, every time. This almost obsessive concern about convenience and function resulted in climate control and audio systems that you'll easily operate.

Among Seville's many unparalleled features, you'll find the available Adaptive driver and front passenger seats - seats so advanced, they adapt to anyone's body. Using a computer-linked network of ten air cells that read body pressure points, the seats automatically inflate or deflate key areas every four minutes, maintaining seating comfort. Additional standard features that add to Seville's seating comfort include fourteen-way power front-seat controls, heated front and rear seats,* and power memory controls that accommodate settings for two different drivers. With the touch of a button on Seville's remote keyless entry key fob, or one on the driver's door panel, the personalization system recalls the seating position for your Seville's two main drivers, as well as their individual exterior rearview mirror preferences, radio station preferences and climate control settings.

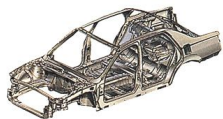
*Outboard positions



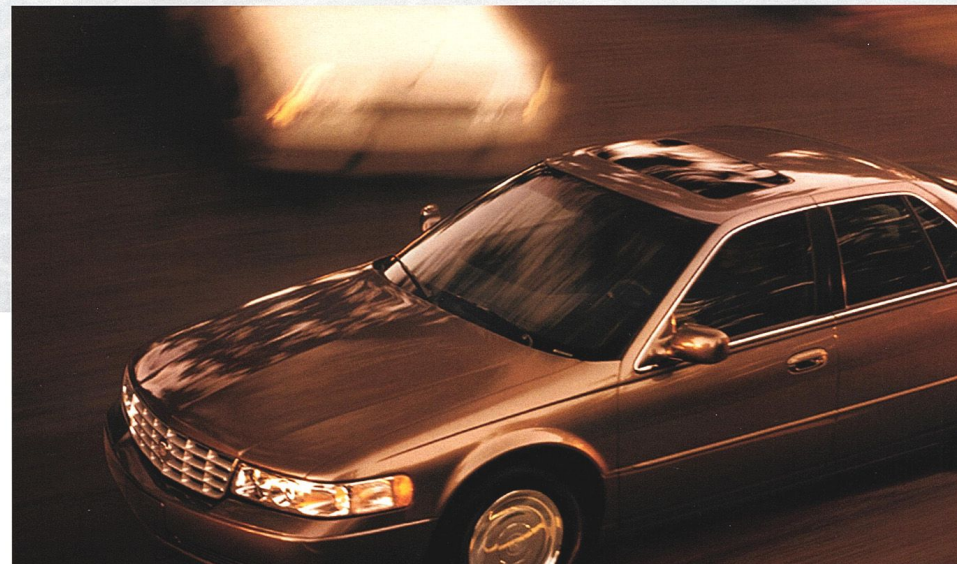
SAFE & SOUND

Two main characteristics of automotive safety are avoiding collisions and working to better survive them. Seville directly addresses both fronts. The Northstar System's four-wheel anti-lock brakes and all-speed traction control add to driver confidence, while StabiliTrak 2.0 raises control to yet another level. But to best help you avoid trouble, you need to see it coming. To that end, Seville's available Rainsense windshield wiper system automatically

activates at the first hint of rain. Collectively, these features give Seville excellent trouble-avoidance capabilities. And isn't that the point? It's actually only half the point: Seville was also crafted with occupant protection in mind. That's why Seville's computer-designed body structure and internal safety cage meet impact standards for front, side, rear, offset crash and roof crush tests. Additionally, the front safety belts are mounted directly to the seats and maintain their fit by moving with the seat when it's adjusted. Seville

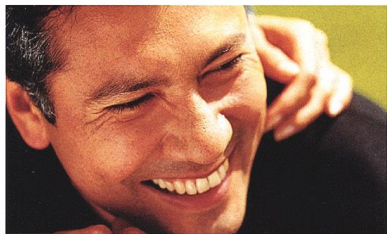


also comes with dual front air bags,* and offers the additional safety of two independent side-impact air bags built into the driver's and front passenger's seats. Daytime running lamps enhance visibility to oncoming traffic. And tungsten-halogen "projector beam" headlamps furnish exceptional driving illumination in any weather. Now that illuminates the whole safety picture.



*Always use safety belts and proper child restraints, even with air bags. Children are safer when properly secured in a rear seat. Please see last page for A Note About Child Safety.





AN OWNERSHIP PACKAGE BEFITTING A CADILLAC.

The Seville owner is a special individual who deserves the distinction of special privileges. The first of these entitlements is Cadillac Roadside Service. It is available 24 hours a day in the U.S. and Canada at no charge for the first 48 months or 50,000 miles of ownership, whichever comes first. Just phone 1-800-882-1112. Trip Interruption Protection is another Seville owner privilege. It can reimburse you for hotel, food and even alternate transportation incurred as a result of a warranted repair that interrupts an owner's travels.* This coverage is also in effect for 48 months or 50,000 miles, whichever comes first. Of course, the General Motors Bumper-to-Bumper Limited Warranty helps safeguard your Seville and its tires for the same length of time with no deductible. Alternate transportation is also available whenever your Seville is in for warranted repairs. See your dealer for details. Finally, Cadillac's Gold Key Delivery System provides you with a personalized introduction to your new Seville and key

*See your Cadillac dealer for limitations and restrictions.

dealership personnel. You'll also receive a special package of ownership materials. Acquisition of a new Seville can also be an experience in exclusive treatment. The Cadillac exclusive Custom Xpress Delivery System can usually find and deliver the exact Seville you prefer within a matter of days. Otherwise, your Seville can be special ordered. After that, it's merely a choice between traditional purchase through GMAC financing or a lease. SmartLease allows you to acquire a new Seville more often, minimizes costs and lowers monthly payments compared to conventional purchase. SmartLease Plus does all this without the bother of monthly payments. Your dealer has all the details. When you use The GM MasterCard®, you receive 5% Earnings* on purchases. You can earn up to \$500.00 per Account Year that can be used toward the purchase or lease of a new Seville. Your Earnings could save you hundreds, even thousands, of dollars over and above any other discount or incentive GM may be offering. To apply for your GM Card, call 1-800-8GM-CARD 24 hours a day. You could be pleasantly surprised.

*See The GM Card Earnings Program Rules for terms and conditions.



cadillac.com

SLS INTERIOR

Air bags*, front - driver and passenger with head and thorax protection;
Side impact - driver and front passenger

Analog instrument cluster

Articulating front headrests/
power height adjustment

Automatic door locking system

Cabin air filtration

Child security rear door locks

Controlled-cycle wipers

Cruise control

Diversity antenna

Driver information center

Electronic compass

Electronic dual-zone climate control

Fingertip steering wheel controls

Flash-to-pass headlamps

Full floor console with gated-shifter

Nuance leather seating areas

PASS-Key III security system

Pass-through rear seat

Power door locks, windows and heated sideview mirrors

Power front-seat adjusters/recliners

Programmable features:
Auto door lock settings
RKE activation/verification
Perimeter security lighting

Task oriented lighting/reading lamps

Rear side window lockout

Remote fuel door release

Remote keyless entry system

Remote trunk release

Retained accessory power

Safety belts, 3-point, all positions

Tilt steering wheel

Traction control on/off switch

Uniform Child Restraint Attachments (UCRA)

Valet lockout

Zebrano wood trim

*Always use safety belts and proper child restraints, even with air bags. Children are safer when properly secured in a rear seat. See the Owner's Manual for more safety information.

SLS EXTERIOR

Alternator, high-output, liquid-cooled

Automatic parking brake release

Daytime running lamps

Electronic brake wear sensors

Electronic level control

Front/rear crush zones

Hydroformed steel roof beams

Headlamps: projector type, tungsten-halogen wiper-activated

Solar-Ray tinted glass

Stainless steel exhaust system

Steel safety cage

Twilight Sentinel

SLS OPTIONAL

Accent striping

Adaptive seating, front, heated

Front-seat power lumbar controls

GPS Navigation System

Hands-free cellular phone

Heated front/rear seating areas

Memory Package, 2 drivers:
14-way driver's seat
Driver's lumbar setting
Steering wheel exit position
Driver's seat exit position
Outside rearview mirror setting
Climate control setting
Radio station presets

OnStar System (dealer installed where available), 1-800-667-8277

Rainsense wiper system

Steering wheel, power tilt/telescope

Sunroof, express open

Three-channel garage door opener

Trunk storage system (dealer installed)

Wood trim package, steering wheel and shift knob

STS STANDARD

All SLS standard features plus:

Automatic parking driver's side mirror

Fog lamps

Memory Package, 2 drivers:
14-way driver's seat
Driver's lumbar setting
Steering wheel exit position
Driver's seat exit position
Outside rearview mirror setting
Climate control setting
Radio station presets

Perforated Nuance leather seating areas

Performance Algorithm Shifting

Programmable features with remote or key-in memory recall

Rainsense wiper system

Steering wheel, power tilt/telescope

STS OPTIONAL

Adaptive seating, front, heated

Engine block heater

GPS Navigation System

Hands-free cellular phone

Heated front/rear seating areas

OnStar System (dealer installed where available), 1-800-667-8277

Sunroof, express open

Three-channel garage door opener

Trunk storage system (dealer installed)

Ultrasonic rear-park aid

Wood trim package, steering wheel and shift knob

STS PERFORMANCE

0-60 mph: 6.7 sec.
Top speed: 150 mph¹
Braking, 70-0 mph: 182 ft.

SLS PERFORMANCE

0-60 mph: 7.7 sec.
Top speed: 112 mph
Braking, 70-0 mph: 192 ft.

SLS & STS

EPA est. mpg: 17 city/28 hwy.
Max. cruising range: 481 miles/774 km²

ENGINE

Northstar 4.6L V8, 32-valve DOHC

2500 hp, 295 ft-lbs torque

SLS: 275 hp, 300 ft-lbs torque

Aluminum block & heads

Bore x stroke: 3.66 in. (93 mm) x 3.31 in. (84 mm)

Displacement: 279 cu. in./4565 cc

Compression: 10.0:1

Valvetrain: 2-stage chain-driven double overhead camshafts, roller/follower valvetrain, 4 valves per cylinder

Ignition: Crank-triggered individual coil with platinum-tipped plugs

Induction: Tuned, sequential port fuel injection

Max. revs: 6,500

Coolant: DEX-COOL, up to 150,000 miles³

Recommended fuel: Unleaded regular

DRIVELINE

Brake/Transmission Shift Interlock

Type: Front engine, front-wheel drive

Transaxle: Electronically controlled 4-speed automatic with overdrive and viscous lock up torque converter clutch

Ratios: 1st.....2.96:1, 2nd.....1.63:1,
3rd.....1.00:1, 4th.....0.68:1,

Final drive ratio: STS 3.71:1
SLS 3.11:1

CHASSIS/SUSPENSION

Suspension: Continuously Variable, Road-Sensing

Front: Independent, MacPherson strut/coil spring with stabilizer bar

Rear: Independent, MultiLink coil springs, stabilizer bar and automatic level control

Dampers, front/rear: Electronic

Stabilizer bar dia., front: STS 1.18 in./30 mm, SLS 1.10 in./28 mm

Stabilizer bar dia., rear: STS .87 in./22 mm, SLS .71 in./18 mm

Steering type: Rack-and-pinion with Magnasteer

Ill speed-sensitive variable-assist

Steering ratio: 14.8:1

Turns, lock-to-lock: 2.4

Turning circle: 42.7 ft./13.03 m

Wheels: Cast aluminum, 16 in. (406 mm) x 7 in. (178 mm)

Tires: STS: Goodyear Eagle LS P235/60R16 H-rated, Optional: Eagle P235/60ZR16

SLS: Goodyear Integrity P235/60R16 S-rated

Brakes: Power 4-wheel disc with ABS and road texture detection

Front discs: Vented, 11.85 in. (301 mm) x 1.26 in. (32 mm)

Rear discs: Solid, 11.61 in. (295 mm) x .43 in. (11 mm)

Stability Enhancement System: StabiliTrak, all-speed

Traction control system: All-speed

CAPACITIES

Oil: 7 qts./6.6 L

Coolant: 12.5 qts./11.8 L

Fuel: 18.5 gal./70.7 L

Battery: 12 v/880 cca

Towing: 3000 lbs./1361 kg

Trunk: 15.7 cu. ft./445 L

INTERIOR DIMENSIONS

Head room:
Front: 38.2 in./969 mm
Rear: 38.0 in./966 mm

Leg room:
Front: 42.5 in./1079 mm
Rear: 38.2 in./970 mm

Hip room:
Front: 55.6 in./1411 mm
Rear: 57.5 in./1460 mm

Shoulder room:
Front: 59.1 in./1501 mm
Rear: 58.0 in./1474 mm

Interior volume: 119.8 cu. ft./3.39 cu. m

Seating capacity: Five persons

NOTE: Photographs in this catalog feature vehicles with optional equipment shown.

¹Requires optional Z-rated tires.

²Estimated highway range: Multiply EPA highway estimate by fuel tank capacity.

³Maintenance needs vary with different uses and driving conditions. See your Owner's Manual for more information.

⁴Systems originally filled with DEX-COOL must be serviced with DEX-COOL.



STS STANDARD:
Open 16" x 7" (406 x 178 mm) cast aluminum



STS OPTIONAL:
16" x 7" (406 x 178 mm) cast aluminum, chrome finish



SLS STANDARD:
Machined 16" x 7" (406 x 178 mm) cast aluminum



SLS OPTIONAL:
Machined 16" x 7" (406 x 178 mm) cast aluminum, chrome finish



SLS STANDARD
Eight-speaker, 250-Watt system with AM stereo/FM stereo, cassette, single-slot CD player and TheftLock



OPTIONAL FOR SLS, STANDARD FOR STS
Bose 4.0 high-performance 8-speaker 425-Watt music system with AM stereo/FM stereo, signal seekscan, digital display, cassette, single-slot CD player, weather band, digital signal processing, Radio Data System, automatic volume control and TheftLock

OPTIONAL FOR SLS AND STS
Six-disc front console-mounted CD changer

IMPORTANT WORDS ABOUT THIS CATALOG

We have tried to make this catalog comprehensive and factual. We must reserve the right, however, to make changes at any time, without notice, in the information contained in this catalog. Since some information may have been updated since the time of printing, please check with your Seville dealer for complete details.

Cadillac reserves the right to lengthen or shorten the model year for any product for any reason, or to start and end model years at different times.

ENGINES

Sevilles are equipped with engines produced by different operating units of GM, its subsidiaries or suppliers to GM worldwide.

ASSEMBLY

Seville and its components are assembled and produced by different operating units of General Motors, its subsidiaries or suppliers to GM worldwide. We sometimes find it necessary to produce Sevilles with differently sourced components than originally scheduled. Since some options may be unavailable when your vehicle is assembled, we suggest that you verify that your vehicle includes the equipment you ordered, or if there are changes, that they are acceptable to you.

UPDATED SERVICE INFORMATION

Cadillac regularly sends its dealers useful service bulletins about Cadillac products. Cadillac monitors product performance in the field. We then prepare bulletins for servicing our products better. Now you can get these bulletins, too. Ask your dealer. To get ordering information, call toll-free 1-800-551-4123.

SAFETY AND SECURITY

The following are just some of the features found on the 2000 Seville:

OCCUPANT PROTECTION: Automatic door locks • Rear center three-point safety belt • Child security door locks and door retention components • Manual lap/shoulder safety belts, 3-point, all positions • Manual lap/shoulder belts and air bags, driver/front passenger - frontal and side • Passenger-guard inside door lock handles • Power window lockout • Safety belt cinch capability for child seats
SECURITY: Anti-lockout feature • Audible theft-deterrent system • Battery rundown protection • Laser-etched VIN plate • PASS-Key theft-deterrent • Remote deck lid release • Remote inside hood release • Remote keyless entry • Stolen vehicle tracking/emergency communication
CRASH AVOIDANCE: Anti-lock brakes, front and rear • Automatic daytime running lamps • Automatic windshield wipers • Brake/transmission shift interlock • Cornering lamps • Disc brakes, front and rear, audible wear indicator • Door warning lamps or reflectors • Fog lamps • Front, side, rear window defoggers • Halogen headlamps • Inside electrochromic rearview mirror • Maintenance-free battery • Outside power rearview mirrors, heated, electrochromic • Stability enhancement • Steering wheel controls • Tinted glass windshield • Tires with built-in tread wear indicators • Traction control • Wiper-activated exterior lamps.

A NOTE ABOUT CHILD SAFETY

Children generally are safer if they are secured in a rear seat using appropriate child safety seats and restraints, which is why General Motors recommends that child safety seats be properly secured in a vehicle's rear seat. Never place a rear-facing infant restraint in the front seat of any vehicle equipped with an active air bag. See your Owner's Manual and child safety seat instructions for more information.

WARRANTY/CORROSION PROTECTION

The GM 4-year/50,000-mile Gold Key Bumper to Bumper limited warranty covers repairs for any new Seville, including labor and parts, to correct any defects in material or workmanship occurring during the warranty period. The complete vehicle will be covered for 4 years or 50,000 miles, whichever comes first, except adjustments and normal maintenance items. Plus free towing and a portfolio of other services. There is no deductible on any Seville warranty. See your Seville dealer for terms of these limited warranties. Sevilles are designed and built to resist corrosion. All body sheet metal components are warranted against rust-through corrosion for 6 years or 100,000 miles. There is no deductible for rust-through repairs. Application of additional rust-inhibiting materials is not required under the corrosion coverage and none is recommended.

Cadillac, the Cadillac emblem, Cadillac Roadside Service, Dexron, DEX-COOL, Seville, General Motors, GM, the GM emblem, The GM Card, GM Protection Plan, Magnasteer, Northstar, OnStar, Solar-Ray, StabiliTrak and Twilight Sentinel are registered trademarks and Rainsense is a trademark of the General Motors Corporation. Cadillac Owner Privileges is a service mark of the General Motors Corporation. PASS-Key and TheftLock are registered trademarks of Delphi Technologies, Inc. GMAC and SmartLease are registered trademarks of the General Motors Acceptance Corporation. Litho in U.S.A. © 1999 GM Corp. All Rights Reserved.

cadillac.com

SEVILLE COLOR GUIDE

EXTERIOR COLORS



12 Sterling



41 Sable Black



54 Cashmere



62 Midnight Blue



76 Bronzest



86 Crimson Pearl*



91 Polo Green



93 White Diamond*

*Available at extra charge.

LEATHER INTERIORS



HARRIET FAREN

FREDERICK CHEVROLET - CADILLAC - OLDSMOBILE - GEO - TOYOTA
1505 Quentin Road, Lebanon, PA 17042

Residence
717/272-8118



717/274-1461
800/222-5523



This familiar coat of arms symbolizes the status and courage of the French noble Le Sieur Antoine de la Mothe Cadillac, founder of Detroit in 1701. Since its adoption by Cadillac Motor Car Company in 1902, the crest has evolved to reflect the advances in technology and design that stand as hallmarks of the Cadillac Division. With the onset of this new millennium, there comes a new vision for Cadillac, and hence a new crest.



Official Sponsor of the
2000 U.S. Olympic Team

IMPORTANT WORDS ABOUT THIS CATALOG

We have tried to make this catalog comprehensive and factual. We must reserve the right, however, to make changes at any time, without notice, in the information contained in this catalog. Since some information may have been updated since the time of printing, please check with your Seville dealer for complete details.

Cadillac reserves the right to lengthen or shorten the model year for any product for any reason, or to start and end model years at different times.

ENGINES

Sevilles are equipped with engines produced by different operating units of GM, its subsidiaries or suppliers to GM worldwide.

ASSEMBLY

Seville and its components are assembled and produced by different operating units of General Motors, its subsidiaries or suppliers to GM worldwide. We sometimes find it necessary to produce Sevilles with differently sourced components than originally scheduled. Since some options may be unavailable when your vehicle is assembled, we suggest that you verify that your vehicle includes the equipment you ordered, or if there are changes, that they are acceptable to you.

UPDATED SERVICE INFORMATION

Cadillac regularly sends its dealers useful service bulletins about Cadillac products. Cadillac monitors product performance in the field. We then prepare bulletins for servicing our products better. Now you can get these bulletins, too. Ask your dealer. To get ordering information, call toll-free 1-800-551-4123.

SAFETY AND SECURITY

The following are just some of the features found on the 2000 Seville:

OCCUPANT PROTECTION: Automatic door locks • Rear center three-point safety belt • Child security door locks and door retention components • Manual lap/shoulder safety belts, 3-point, all positions • Manual lap/shoulder belts and air bags, driver/front passenger - frontal and side • Passenger-guard inside door lock handles • Power window lockout • Safety belt cinch capability for child seats
SECURITY: Anti-lockout feature • Audible theft-deterrent system • Battery rundown protection • Laser-etched VIN plate • PASS-Key theft-deterrent • Remote deck lid release • Remote inside hood release • Remote keyless entry • Stolen vehicle tracking/emergency communication
CRASH AVOIDANCE: Anti-lock brakes, front and rear • Automatic daytime running lamps • Automatic windshield wipers • Brake/transmission shift interlock • Cornering lamps • Disc brakes, front and rear, audible wear indicator • Door warning lamps or reflectors • Fog lamps • Front, side, rear window defoggers • Halogen headlamps • Inside electrochromic rearview mirror • Maintenance-free battery • Outside power rearview mirrors, heated, electrochromic • Stability enhancement • Steering wheel controls • Tinted glass windshield • Tires with built-in tread wear indicators • Traction control • Wiper-activated exterior lamps.

A NOTE ABOUT CHILD SAFETY

Children generally are safer if they are secured in a rear seat using appropriate child safety seats and restraints, which is why General Motors recommends that child safety seats be properly secured in a vehicle's rear seat. Never place a rear-facing infant restraint in the front seat of any vehicle equipped with an active air bag. See your Owner's Manual and child safety seat instructions for more information.

WARRANTY/CORROSION PROTECTION

The GM 4-year/50,000-mile Gold Key Bumper to Bumper limited warranty covers repairs for any new Seville, including labor and parts, to correct any defects in material or workmanship occurring during the warranty period. The complete vehicle will be covered for 4 years or 50,000 miles, whichever comes first, except adjustments and normal maintenance items. Plus free towing and a portfolio of other services. There is no deductible on any Seville warranty. See your Seville dealer for terms of these limited warranties. Sevilles are designed and built to resist corrosion. All body sheet metal components are warranted against rust-through corrosion for 6 years or 100,000 miles. There is no deductible for rust-through repairs. Application of additional rust-inhibiting materials is not required under the corrosion coverage and none is recommended.

Cadillac, the Cadillac emblem, Cadillac Roadside Service, Dexron, DEX-COOL, Seville, General Motors, GM, the GM emblem, The GM Card, GM Protection Plan, Magnasteer, Northstar, OnStar, Solar-Ray, StabiliTrak and Twilight Sentinel are registered trademarks and Rainsense is a trademark of the General Motors Corporation. Cadillac Owner Privileges is a service mark of the General Motors Corporation. PASS-Key and TheftLock are registered trademarks of Delphi Technologies, Inc. GMAC and SmartLease are registered trademarks of the General Motors Acceptance Corporation. Litho in U.S.A. 8/99 © 1999 GM Corp. All Rights Reserved.

cadillac.com



HARRIET FAREN

FREDERICK CHEVROLET - CADILLAC - OLDSMOBILE - GEO - TOYOTA
1505 Quentin Road, Lebanon, PA 17042

Residence
717/272-8118



717/274-1461
800/222-5523



This familiar coat of arms symbolizes the status and courage of the French noble Le Sieur Antoine de La Mothe Cadillac, founder of Detroit in 1701.

Since its adoption by Cadillac Motor Car Company in 1902, the crest has evolved to reflect the advances in technology and design that stand as hallmarks of the Cadillac Division. With the onset of this new millennium, there comes a new vision for Cadillac, and hence a new crest.

SEVILLE COLOR GUIDE

EXTERIOR COLORS



12 Sterling



41 Sable Black



54 Cashmere



62 Midnight Blue



76 Bronzemist



86 Crimson Pearl*



91 Polo Green



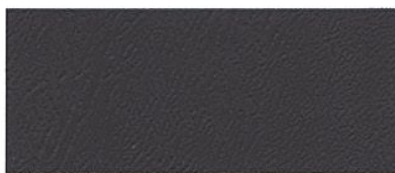
93 White Diamond*

*Available at extra charge.

LEATHER INTERIORS



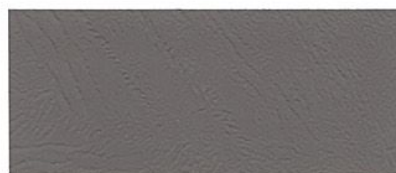
15 Neutral Shale



19 Black



50 Oatmeal



92 Pewter

Note: Standard leather seating areas include Nuance leather inserts on the Seville SLS and perforated Nuance leather inserts on the Seville STS.

cadillac.com



cadillac.com

SEVILLE 2000

