

D E V I L L E



2001

THE POWER OF &



FOR THE FIRST TIME IN OVER 50 YEARS, CADILLAC HAS RETURNED TO LE MANS. THIS TIME

WITH ITS ALL-NEW LMP RACE CAR — IN 1950 IT WAS THE THEN ALL-NEW DEVILLE, AND JUST

AS IT WAS, IT IS STILL DESIGN AND TECHNOLOGY THAT HAVE MADE CADILLAC'S IMPRES-

THE FUSION OF DESIGN & TECHNOLOGY.

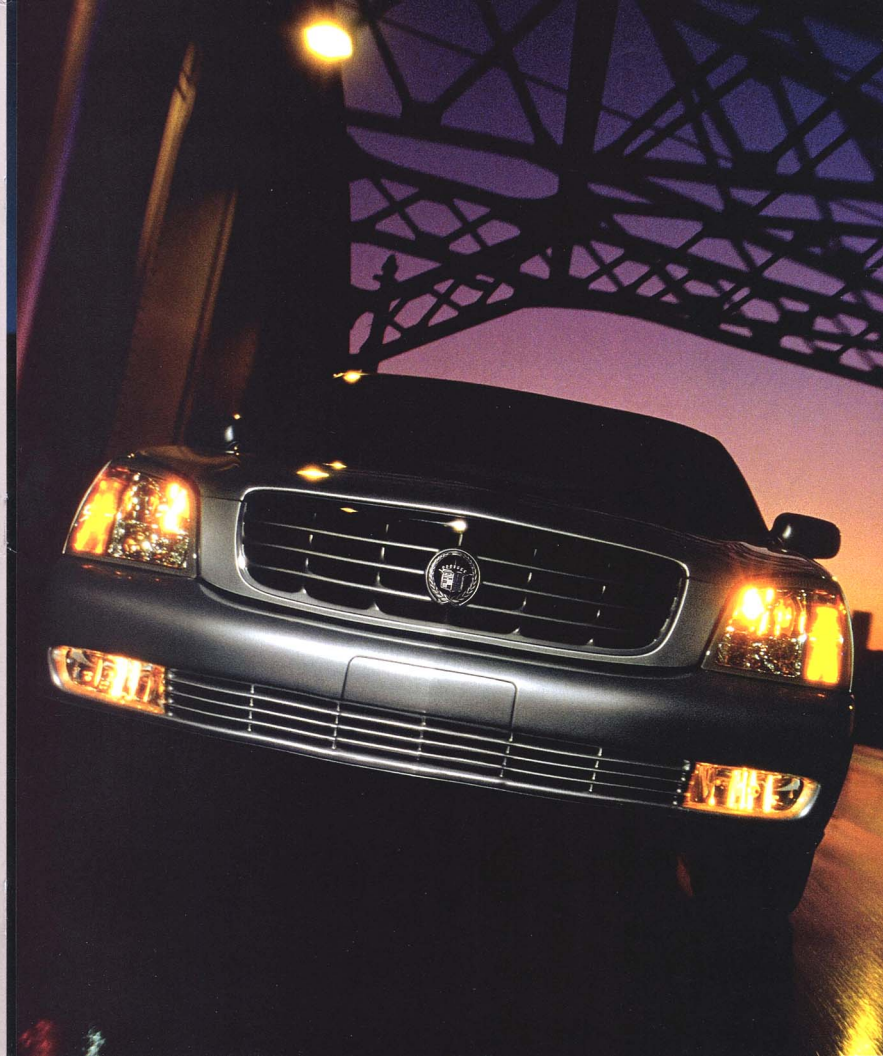
SIVE FINISH POSSIBLE. TODAY, THESE SAME VIRTUES ENDURE IN BOTH THE LMP RACER AND

2001 DEVILLE. TOGETHER, THEY ARE EXPRESSIONS OF CADILLAC'S BOLD NEW DIRECTION.

AND WHILE EACH OF THESE CADILLACS HAS A DEFINED AND DIFFERENT PURPOSE, BOTH

CAN TRACE THEIR GENESIS TO THE INGENUOUS FUSION OF DESIGN AND TECHNOLOGY.

IT'S OUR GUIDING PHILOSOPHY, AND IT'S THE POWER OF &.



THE POWER OF &

FOR THE FIRST TIME IN OVER 50 YEARS, CADILLAC HAS RETURNED TO LE MANS. THIS TIME

WITH ITS ALL-NEW LMP RACE CAR — IN 1950 IT WAS THE THEN ALL-NEW DEVILLE, AND JUST

AS IT WAS, IT IS STILL DESIGN AND TECHNOLOGY THAT HAVE MADE CADILLAC'S IMPRES-

SIVE FINISH POSSIBLE. TODAY, THESE SAME VIRTUES ENDURE IN BOTH THE LMP RACER AND

2001 DEVILLE. TOGETHER, THEY ARE EXPRESSIONS OF CADILLAC'S BOLD NEW DIRECTION.

AND WHILE EACH OF THESE CADILLACS HAS A DEFINED AND DIFFERENT PURPOSE, BOTH

CAN TRACE THEIR GENESIS TO THE INGENUOUS FUSION OF DESIGN AND TECHNOLOGY.

IT'S OUR GUIDING PHILOSOPHY. AND IT'S THE POWER OF &.



ARRESTING FINESSE: INCOMPARABLE STYLE, INTUITIVE
TECHNOLOGIES, & A VISION FOR WHAT LIES AHEAD.



SEE BEYOND THE NIGHT
& BEYOND THE LIMITS OF LIGHT.

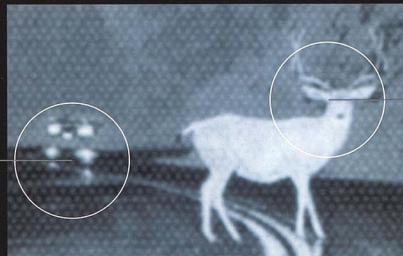
Only DeVille offers you the advantage of available Night Vision. It's a brilliant adaptation of infrared technology that allows you to see up to five times farther than your low-beam headlamps can reach by "lighting up" the roadway directly ahead. This is because a special camera-like sensor in the grille reads the "heat signature" of the scene, processes the data in real time, and translates it all into a video image. This is projected onto your windshield through a Head-Up Display atop the instrument panel. But the Night Vision image that you see appears before you above the hood, just to the left of center. It's a natural checkpoint. And it's very illuminating.

AN EYE TOWARD THE AUTOMOTIVE FUTURE? PERHAPS. A BADGE OF TECHNICAL HONOR? CERTAINLY.



DEVILLE'S OPTIONAL GRILLE-MOUNTED NIGHT VISION SENSOR SEES WHAT'S AHEAD OF YOU THROUGH THE SCIENCE OF INFRARED TECHNOLOGY. SOME DAY, ALL CARS MIGHT HAVE IT. TODAY, IT'S ONLY DEVILLE DTS AND DHS. A COMPLETE SIMULATION IS AVAILABLE AT CADILLAC.COM.

Headlamp glare
Because refracted light is "cold" to Night Vision's eye, you can see right through it...to what's beyond.



Stay ahead of what's ahead
Night Vision sees heat energy radiated by living and inanimate objects shrouded in darkness.

NIGHT VISION
Technology that's designed to help enhance your vision and increase your time to react.

From its elegantly crafted headlamps to its 300-hp 32-valve Northstar V8, this DeVille is programmed to be a classic. But the hardware of DTS is also important. That includes Rainsense wipers, 17-inch cast wheels, performance tires, StabiliTrak 2.0, road-sensing suspension, available Night Vision and Ultrasonic Rear Parking Assist, and more.



DEVILLE DTS: A CAPTIVATING CHARISMA
WEDDED TO COMPUTER-ENHANCED TECHNOLOGIES.





DEVILLE DTS INTERIOR SHOWN IN NEUTRAL SHALE WITH AVAILABLE
NAVIGATION SYSTEM, NIGHT VISION, AND WOOD TRIM PACKAGE

WELCOME TO DEVILLE DTS
& A WORLD OF INNER PEACE.



DEVILLE DTS INTERIOR SHOWN IN NEUTRAL SHALE WITH AVAILABLE WOOD TRIM PACKAGE

Relax amidst the aroma of supple perforated leather and the comfort that comes from front and rear heated seats (outboard positions). And enjoy the raised theater position of the rear seats (that also incorporate the hidden rear-seat-to-trunk pass-through). At the rear you'll always find high-visibility LED taillamps that can help give drivers behind you a little extra reaction time.



DEVILLE DHS: A LEGEND OF LUXURY

THAT IS REFINED & REMARKABLE.



DEVILLE DHS SHOWN IN WHITE DIAMOND



TRAVEL FIRST-CABIN

IN SEATS THAT ARE SECOND TO NONE.

DEVILLE DHS INTERIOR SHOWN IN NEUTRAL SHALE

In DeVille DHS, leather seating areas provide the elegance. A fold-up center console offers three-across front seating. DHS also includes a rear sunshade package, adjustable rear headrests, rear vanity mirrors, and rear outboard heated seats with power lumbar adjustments—all to benefit your favorite backseat driver.



To give DeVille heightened responses, there is a 275-hp V8. Inside, you'll find tri-zone climate control that can be tailored by each front passenger and those in the rear (who can control temperature, fan speed, and airflow). Then consider other amenities like available six-disc CD changer, rear-seat side-impact air bags*, and power sunroof. After all, this is a Cadillac.



DEVILLE: A DEFINITION OF ART.

AN ENCYCLOPEDIA OF TECHNOLOGY.



DEVILLE SHOWN IN BLACK

*Always use safety belts and proper child restraints, even in vehicles with air bags. Children are safer when properly secured in the rear seat. See the Owner's Manual for more safety information.

ONSTAR ONBOARD SERVICES:
EXECUTIVE ASSISTANCE ANYTIME.



There's one voice with over five million service listings including hotels, restaurants, and ATMs. And it belongs to a real, live OnStar Advisor. There's a second voice with access to a customized database specified by you. It belongs to OnStar's new Virtual Advisor. Through the available Virtual Advisor, your voice commands can have your e-mail read to you while you drive or request the latest performance of your stock portfolio. OnStar also offers Personal Calling. This available service turns OnStar into a hands-free voice-activated cell phone*.



ONSTAR IS AS CLOSE AS THE ONSTAR BUTTON ON DEVILLE'S REARVIEW MIRROR. ONE TOUCH PUTS YOU IN IMMEDIATE VOICE CONTACT WITH A REAL OR "VIRTUAL" ADVISOR.

WHETHER YOU'RE IN TRAFFIC OR "IN COUNTRY," ONSTAR'S AVAILABLE VIRTUAL ADVISOR SYSTEM CAN ACCESS LOCAL WEATHER, TRAFFIC, OR NEWS AND CHANNEL IT RIGHT TO YOUR VEHICLE THROUGH VOICE-ACTIVATED PROMPTS.

WHAT'S MORE, YOU CAN PERSONALIZE THE INFORMATION BY PROGRAMMING VIRTUAL ADVISOR THROUGH ANY ONLINE COMPUTER. LEARN MORE AT CADILLAC.COM.

*One-year OnStar Premium Service agreement included as standard on DeVille. Existing OnStar service agreement required for Personal Calling; additional usage charges apply. Personal Calling required for Virtual Advisor service. Interim 2001 Model Year availability in select markets for Personal Calling and Virtual Advisor. Call 1-800-ONSTAR-7 for system limitations and details.



FOR EMERGENCY SERVICE,
JUST PUSH THE RED BUTTON.



THE CLOSEST ATM FAST?
WE'LL DIRECT YOU.



DINNER OR HOTEL
RESERVATIONS -
WE MAKE THEM HAPPEN.



LOCKED OUT?
WE'LL UNLOCK VIA A
CELLULAR SIGNAL.



NEED ROADSIDE ASSISTANCE?
WE DIRECT AID TO YOU FAST.



SEND FLOWERS WITHOUT
LEAVING THE CAR.





SOME ADVANCED TECHNOLOGY
THAT COVERS YOUR BEHIND.

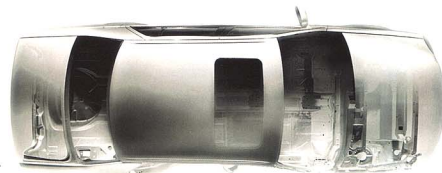
Ultrasonic Rear Parking Assist is both a convenience and a safety feature.

Available on any DeVille, it performs much like radar to reveal how close you are to certain stationary objects as you back up at less than 3 mph.

Sensors in the rear bumper transmit and receive ultrasonic waves as they bounce off objects behind the car. Inside DeVille, a series of lights and an audible tone warn as you draw closer. A different kind of safety is offered by DeVille's body structure. It incorporates an internal safety cage plus crush zones at the front and rear.

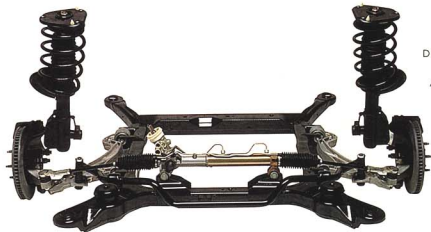
POWERFUL COMPUTER PROGRAMS HELPED DEVELOP DEVILLE'S SOLID AND DYNAMICALLY RIGID BODY STRUCTURE.

A NOTE ON CHILD SAFETY: ALWAYS USE SAFETY BELTS AND PROPER CHILD RESTRAINTS, EVEN IN VEHICLES WITH AIR BAGS. CHILDREN ARE SAFER WHEN PROPERLY SECURED IN A REAR-FACING INFANT RESTRAINT IN THE FRONT SEAT OF ANY VEHICLE EQUIPPED WITH AN ACTIVE AIR BAG. SEE YOUR VEHICLE OWNER'S MANUAL AND CHILD SAFETY SEAT INSTRUCTIONS FOR MORE INFORMATION.



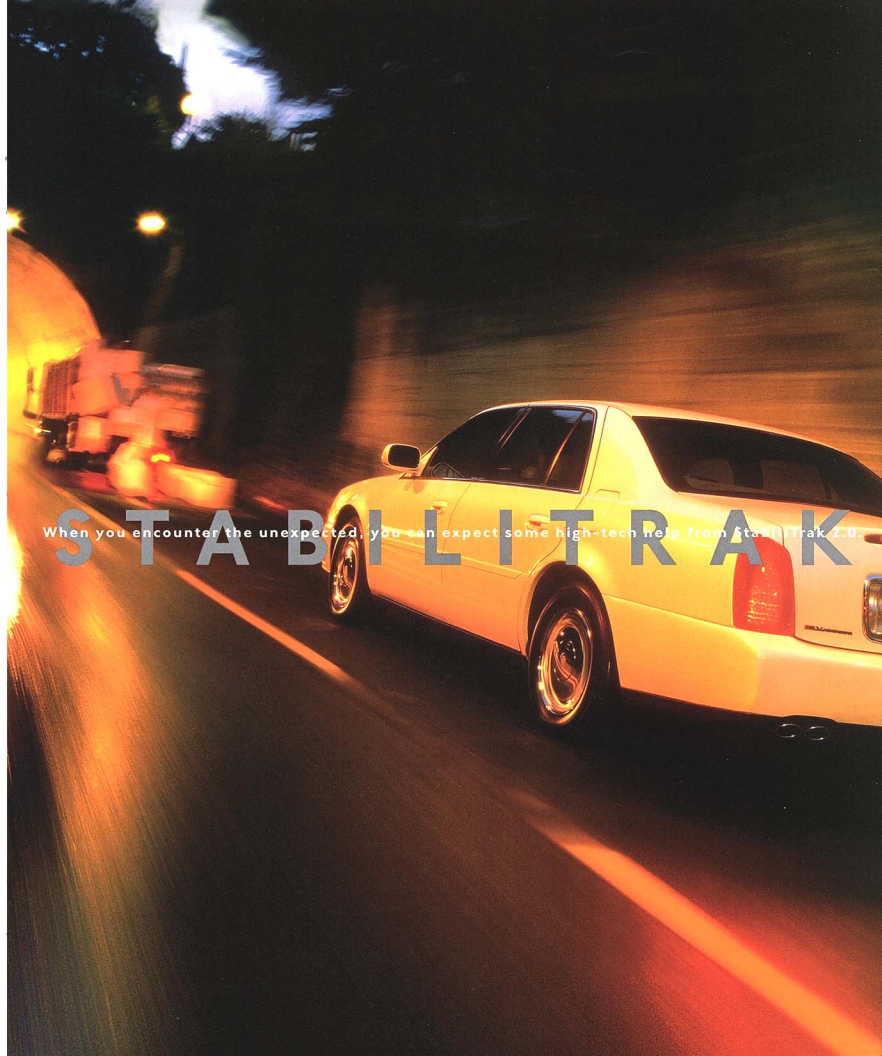
NOW YOU CAN DODGE TROUBLE
WITHOUT GETTING YOURSELF INTO MORE OF IT.

StabiliTrak 2.0 has been ranked with all-wheel ABS as a major automotive safety advance. It helps you maintain control by computer analyzing DeVille's vital driving dynamics during sudden maneuvers. Especially in low-traction situations. Then, if StabiliTrak 2.0 detects an impending loss of control, it applies a precise amount of pressure to the proper front brake to help you keep DeVille on track. StabiliTrak 2.0 also can help keep you in control if you must accelerate sharply to avoid danger, especially in a passing situation. DeVille is one of the few cars in the world that lets you do this. Standard on DeVille DTS, StabiliTrak 2.0 is demonstrated at cadillac.com.



DEVILLE'S CONFIDENT HANDLING QUALITIES
ARE ENHANCED BY SPECIAL SPRINGS, DAMPERS, AND
ALUMINUM CONTROL ARMS THAT HELP REDUCE
UNSPRUNG WEIGHT.

When you encounter the unexpected, you can expect some high-tech help from StabiliTrak 2.0.



WE'VE MADE A SYSTEMATIC EFFORT
TO KEEP YOU AHEAD OF THE CURVE.

Automotive experts praise the Northstar System. And they have good reason. At its heart is a 32-valve DOHC V8 with up to 300 hp. It features roller valve lifters, coil-fired spark plugs, and a low-friction valvetrain. But the Northstar System also includes ABS and the all-speed traction control system. In addition, StabiliTrak 2.0 is available on DeVille and DHS. On DTS, StabiliTrak 2.0 is standard along with road-sensing suspension.



THE NORTHSTAR SYSTEM CONDUCTS A CONTINUOUS, REAL-TIME COMPUTER ANALYSIS
OF YOUR DRIVING SITUATION. THIS DATA HELPS THE SYSTEM CONSTANTLY
REFINE DEVILLE'S DRIVING DYNAMICS TO YOUR SITUATION.



It's more than a powerful, enhanced 32-valve V8 engine. Northstar is an entire driving system.



STANDARD FEATURES & AVAILABLE EQUIPMENT

S (Standard) A (Available) — (Not Available)

INTERIOR FEATURES & AMENITIES

	DeVille	DHS	DTS
AIR BAGS*			
Driver and right front passenger frontal-impact	S	S	S
Driver and right front passenger side-impact	S	S	S
Rear outboard seating positions, side-impact	A	A	A
AUDIO SYSTEMS			
AM/FM stereo with cassette, single-slot CD player; TheftLock, and 8 speakers	S	—	—
Bose premium audio system with AM/FM stereo, cassette, single-slot CD player, 275 watts total power, automatic volume compensation technology, weatherband reception, Radio Data System with emergency broadcast reception, 6-channel custom equalization, TheftLock, and 8 speakers	—	S	S
Bose premium audio system with navigation display, requires 6-disc CD changer (n.a. with cassette)**	—	A	A
6-disc CD changer, located in glove box	A	A	A
CLIMATE CONTROL SYSTEM			
Tri-zone electronic climate control with individual settings for driver, front passenger, and rear seating areas	S	S	S
CONSOLE			
Front center floor console with shifter, storage	—	—	S
DOOR LOCKS			
Power automatic programmable locks with central unlocking	S	S	S
ILLUMINATED ENTRY SYSTEM			
	S	S	S
INSTRUMENT PANEL			
Digital instrumentation	S	—	S
Analog instrumentation	—	S	S
Driver information and vehicle status readouts	S	S	S
MEMORY PACKAGE			
Automatically recalls setting for 2 drivers based on their individual remote keyless entry key fob; the recall function remembers the position of the driver's seat, exit seating position, exterior rearview mirror preference, climate control settings, and radio station presets	A†	S	A†
MIRRORS			
Electrochromic, automatic dimming inside rearview mirror with electronic compass	S	S	S
Illuminated vanity mirrors	S	S	S
Rear-seat overhead illuminated vanity mirrors (not available with sunroof)	—	S	—
NIGHT VISION WITH HEAD-UP DISPLAY (Requires Safety & Security Package)	—	A	A
ONSTAR COMMUNICATION SYSTEM††			
Premium Concierge Services that can direct callers to restaurants, ATMs, and businesses in over 250 categories. OnStar Advisors can help make reservations, plan outings, provide route support, and much more	S	S	S
Safety and Security Services include air bag deployment notification, remote door unlock, stolen vehicle tracking, remote diagnostics, and MED-NET	S	S	S
Personal Calling with hands-free cellular call initiation	A	A	A
Virtual Advisor gives OnStar users who select Personal Calling the ability to receive voice-activated e-mail and select news, sports information, stock quotes, and weather reports	A	A	A

	DeVille	DHS	DTS
PERIMETER LIGHTING	S	S	S
PHONE			
Hands-free integrated analog cellular phone system with steering wheel controls	A	A	A
POWER REAR SUNSHADE/MANUAL REAR SHADES	—	S	—
PROGRAMMABLE INTERIOR FEATURES			
Give you the ability to set preferences for automatic door lock operation, activation, and notification of the remote keyless entry and alarm systems, and operation of the perimeter lighting system and passenger mirror curb view (w/memory seat option)	S	S	S
REMOTE KEYLESS ENTRY SYSTEM, PROGRAMMABLE	S	S	S
SEATING			
6-passenger seating featuring a column-mounted transmission gear selector and a comfortable 40/20/40 split-bench seat covered in rich Renaissance fabric	S	—	—
6-passenger seating featuring a column-mounted transmission gear selector and a comfortable 40/20/40 split-bench seat with supple leather seating surfaces	A	—	—
5-passenger seating with front center console and perforated leather seating areas	—	S	S
Power front-seat 8-way adjusters/recliners	—	S	S
Rear-seat 4-way lumbar (outboard positions)	—	S	—
Heated front and rear seating areas (outboard positions)	A†	S	S
Lumbar support	—	S	S
4-way power for the driver and right-front passenger (non-massaging only)	A†	—	—
4-way power for the driver and right-front passenger (massaging)	—	S	S
Adaptive front seats, driver and right-front passenger (eliminates massaging lumbar; requires Comfort & Convenience Package on DTS)	—	A	A
SAFETY BELTS			
Lap and shoulder belts for all positions (except center front seat, lap-belt only)	S	S	S
SOLAR-RAY TINTED GLASS			
	S	S	S
STEERING WHEEL			
Tilt-Wheel adjustable	S	S	S
Steering wheel controls for audio and climate systems	S	S	S
Leather-trimmed	S	—	S
Leather and wood trim	—	S	A
Power Tilt-Wheel and telescoping	—	S	A†
THEFT-DETERRENT SYSTEM			
PASS-Key II with audible arming	S	S	S
TIRE PRESSURE MONITORING	A*	A*	A*
TRUNK			
Carpeted	S	S	S
Convenience net	S	S	S
Trunk mat with deck lid tie-down	A†	S	A†
Remote release	S	S	S

UNIVERSAL GARAGE DOOR OPENER

A* A* A*

WINDOWS

Power with express-down operation

WINDSHIELD WIPERS

Rainsense system with automatic operation

WOOD TRIM PACKAGES

Steering wheel

Shifter

EXTERIOR FEATURES

LIGHTS

Daytime running lamps with Twilight Sentinel automatic operation and power-activated automatic-on feature, tungsten-halogen headlights with flash-to-pass feature, front cornering lamps, illuminated entry system, and full-width LED taillamps

FOG LAMPS

MIRRORS

Electrochromic with automatic dimming on the driver's side; both sides electrically powered and heated

SUNROOF

Glass with sunshade, vent, and one-touch express-open feature

TIRES

Michelin Symmetry, P225/60R16

Goodyear Eagle LS, P225/55HR17

ULTRASONIC REAR PARKING ASSIST

WHEELS

7-spoke, 16" cast aluminum

7-spoke, 16" chrome

7-spoke, 16" chrome

7-spoke, 17" cast aluminum

7-spoke, 17" chrome

POWERTRAINS

4.6 liter Northstar engine with 275 horsepower at 5,600 rpm

and 300 ft.-lbs torque at 4,000 rpm

4.6 liter Northstar engine with 300 horsepower at 6,000 rpm

and 295 ft.-lbs torque at 4,400 rpm

4-speed automatic transmission with overdrive and electronic shift control

Front-wheel drive

CHASSIS & SUSPENSION

All-speed traction control that integrates brake and engine management systems

Brakes:

4-wheel disc brakes with anti-lock braking system

Continuously variable road-sensing suspension (CVRSS 2.0)

Computer-controlled active suspension system with adjustable, computer-controlled shock absorbers

Electronic rear-level control system

StabiliTrak 2.0 Ride Control System

COLORS

Exterior:

Sterling, Graphite (not available at start of production),

Collision White (not available on DHS and DTS),

Sable Black, Cabernet, Cashmere, Midnight Blue,

Bronzemist, Crimson Pearl™, White Diamond™

Interior:

Renaissance fabric (cloth): Neutral Shale

Leather: Dark Gray, Neutral Shale, Black, Midnight Blue,

Oatmeal (not all colors are available on DHS & DTS—

see color card for details)

DIMENSIONS & CAPACITIES

Seating: DeVille 6, DHS 6, DTS 5

Head room: Front 39.1" (993 mm) Rear 38.4" (975 mm)

Leg room: Front 42.4" (1,076 mm) Rear 43.2" (1,098 mm)

Hip room: Front 56.4" (1,432 mm) Rear 56.7" (1,438 mm)

Shoulder room: Front 60.4" (1,532 mm) Rear 60.1" (1,526 mm)

Curb weight: DeVille 3,978 lbs, DHS 4,049 lbs, DTS 4,047 lbs

Cargo volume: 19.1 cubic feet



DeVille Std 16x7" chrome with blackwall

DeVille Opt. 16x7" chrome with Goodyear Eagle LS P225/55HR17 H-rated blackwall

DHS Std. 16x7" chrome with Michelin P225/60SR-16 blackwall



DHS Std 17x7" chrome with Goodyear Eagle LS P235/55HR17 H-rated blackwall

DHS Opt. 17x7" chrome with Goodyear Eagle LS P235/55HR17 H-rated blackwall

* Always use safety belts and proper child restraints, even in vehicles with air bags. Children are safer when properly secured in a rear seat. See the Owner's Manual for more safety information.

** Limited detailed coverage area. Visit cadillac.com or see your Cadillac dealer for further information.

†† Available in Comfort & Convenience Package.

‡ One-year OnStar Premium Service agreement included as standard on DeVille. Existing OnStar service agreement required for Personal Calling; additional usage charges apply. Personal Calling required for Virtual Advisor service. Interim 2001 Model Year availability in select markets for Personal Calling and Virtual Advisor. Call 1-800-ONSTAR-7 for system limitations and details. OnStar uses existing emergency service providers as well as cellular and satellite technologies. Vehicle electrical system must be operating for features to function properly.

* Available in Safety & Security Package.

** Available at extra cost.

†† Available at extra cost.

‡ One-year OnStar Premium Service agreement included as standard on DeVille. Existing OnStar service agreement required for Personal Calling; additional usage charges apply. Personal Calling required for Virtual Advisor service. Interim 2001 Model Year availability in select markets for Personal Calling and Virtual Advisor. Call 1-800-ONSTAR-7 for system limitations and details. OnStar uses existing emergency service providers as well as cellular and satellite technologies. Vehicle electrical system must be operating for features to function properly.

* Available in Safety & Security Package.

** Available at extra cost.

†† Available at extra cost.

‡ One-year OnStar Premium Service agreement included as standard on DeVille. Existing OnStar service agreement required for Personal Calling; additional usage charges apply. Personal Calling required for Virtual Advisor service. Interim 2001 Model Year availability in select markets for Personal Calling and Virtual Advisor. Call 1-800-ONSTAR-7 for system limitations and details. OnStar uses existing emergency service providers as well as cellular and satellite technologies. Vehicle electrical system must be operating for features to function properly.

* Available in Safety & Security Package.

** Available at extra cost.

†† Available at extra cost.

‡ One-year OnStar Premium Service agreement included as standard on DeVille. Existing OnStar service agreement required for Personal Calling; additional usage charges apply. Personal Calling required for Virtual Advisor service. Interim 2001 Model Year availability in select markets for Personal Calling and Virtual Advisor. Call 1-800-ONSTAR-7 for system limitations and details. OnStar uses existing emergency service providers as well as cellular and satellite technologies. Vehicle electrical system must be operating for features to function properly.

cadillac.com Visit cadillac.com for the most current information regarding DeVille technology, features, pricing, and special events.

IMPORTANT WORDS ABOUT THE CATALOG

We have tried to make this catalog comprehensive and factual. We must reserve the right, however, to make changes at any time, without notice, in price, color, materials, equipment specifications, models, and availability. Since some information may have been updated since the time of printing, please check with your Cadillac dealer for complete details. Any variation in colors shown are due to reproduction variation in the printing process. Some photos in this catalog show vehicles with optional equipment.

Cadillac reserves the right to lengthen or shorten the model year for any product for any reason, or to start and end model years at different times.

ENGINES

DeVilles are equipped with engines produced by different operating units of General Motors, its subsidiaries, or suppliers to General Motors worldwide.

ASSEMBLY

DeVille and its components are assembled and produced by different operating units of General Motors, its subsidiaries, or suppliers to General Motors worldwide. We sometimes find it necessary to produce DeVilles with different or differently sourced components than originally scheduled. Since some options may be unavailable when your vehicle is assembled, we suggest that you verify that your vehicle includes the equipment you ordered, or if there are changes, that they are acceptable to you.

SAFETY AND SECURITY

The following are just some of the features on the 2001 DeVille:
OCCUPANT PROTECTION: Adjustable upper belt anchors for outboard front safety belts • Three-point lap and shoulder safety belts for all seating positions except front center • Front center lap belts • Air bags, driver and front passenger • Air bags, front side-impact • Automatic door locks • Safety belt cinch capability for child seats • Child security door locks • Intentional-set safety belt comfort feature • Power window lockout
CRASH AVOIDANCE: Anti-lock brakes, front and rear • Brake/transmission shift interlock • Disc brakes, front and rear, audible wear indicator • Maintenance-free battery • StabiliTrak 2.0 stability enhancement (available) • Steering wheel controls • Tires with built-in tread wear indicator • Traction control • Automatic daytime running lamps • Automatic windshield wipers • Cornering lamps • Door warning lights or reflectors • Fog lamps • Halogen headlamps • Inside electrochromic rearview mirror • Outside power rearview mirrors, heated, electrochromic • Rear window defogger • Side window defogger, front • Tinted-glass windshield • Wiper-activated exterior lamps
SECURITY: Anti-lockout features • Audible theft-deterrent system • Battery rundown protection • Laser-etched VIN plate • PASS-Key theft-deterrent system • Remote deck lid release • Remote hood release • Remote keyless entry • Stolen vehicle tracking/emergency communication (requires OnStar activation).

A NOTE ABOUT CHILD SAFETY

Always use safety belts and proper child restraints, even in vehicles with air bags. Children are safer when properly secured in a rear seat. Never place a rear-facing infant restraint in the front seat of any vehicle equipped with an active air bag. See your Owner's Manual and child safety seat instructions for more information.

UPDATED SERVICE INFORMATION

Cadillac regularly sends its dealers useful service bulletins about Cadillac products. Cadillac monitors product performance in the field. We then prepare bulletins for servicing our product better. Now you can get these bulletins, too. Ask your dealer. To get ordering information, call toll-free 1-800-551-4123.

CORROSION PROTECTION

DeVilles are designed and built to resist corrosion. All body sheet-metal components are warranted against rust-through corrosion for six years or 100,000 miles (whichever comes first). Application of additional rust-inhibiting materials is not required under the corrosion coverage and none is recommended. See your Cadillac dealer for terms of this limited warranty.

WARRANTY

The General Motors four-year/50,000-mile Gold Key Bumper-to-Bumper Limited Warranty covers repairs for any new DeVille, including labor and parts, to correct any defects in material or workmanship occurring during the warranty period. The complete vehicle will be covered for four years or 50,000 miles, whichever comes first, except adjustments and normal maintenance items. Plus free towing and a portfolio of other services. There is no deductible on any DeVille warranty. See your Cadillac dealer for terms of these limited warranties.

CADILLAC, CADILLAC ROADSIDE SERVICE, DEVILLE, DEXRON, DEX-COOL, GENERAL MOTORS, GM, the GM emblem, the GM CARD, GM PROTECTION PLAN, MAGNATEER, NORTHSTAR, SOFT-RAY, SOLAR-RAY, STABILITRAK, and TWILIGHT SENTINEL are registered trademarks and RAISENSE, the CADILLAC badge, THE POWER OF 8, and THE FUSION OF DESIGN & TECHNOLOGY are trademarks of the General Motors Corporation. CADILLAC OWNER PRIVILEGES is a service mark of the General Motors Corporation. PASS-KEY and THEFTLOCK are registered trademarks of Delphi Technologies, Inc. GMAC, SMARTLEASE, and SMARTLEASE PLUS are registered trademarks of the General Motors Acceptance Corporation. ONSTAR, the ONSTAR emblem, and the ONSTAR button are registered trademarks of OnStar Corporation.

Litho in U.S.A. 8/00 ©2000 GM Corp. All rights reserved.



CADILLAC OWNER PRIVILEGES

BY DRIVING A DEVILLE, YOU'RE PART OF A SELECT GROUP THAT DESERVES SPECIAL PRIVILEGES. THESE INCLUDE FREE 24-HOUR ROADSIDE SERVICE (PHONE 1-800-882-1112) AND TRIP INTERRUPTION PROTECTION. ROADSIDE SERVICE IS AVAILABLE FOR JUMP-STARTS, TOWING, LOCKOUTS, FUEL DELIVERY, OR FLAT-TIRE CHANGES. TRIP INTERRUPTION PROTECTION CAN REIMBURSE YOU FOR EXPENSES INCURRED AS A RESULT OF A WARRANTED REPAIR THAT INTERRUPTS YOUR TRAVEL. ALTERNATE TRANSPORTATION IS ALSO AVAILABLE WHENEVER YOUR VEHICLE IS IN FOR WARRANTED REPAIRS. YOU CAN ALSO RELY ON THE GM BUMPER-TO-BUMPER LIMITED WARRANTY. ALL THIS COVERAGE IS IN EFFECT FOR THE FIRST 48 MONTHS OR 50,000 MILES OF OWNERSHIP, WHICHEVER COMES FIRST. SEE YOUR DEALER FOR COMPLETE DETAILS, TERMS, AND CONDITIONS OF THESE PROGRAMS AND THE GM LIMITED WARRANTY.

DEVILLE COLOR & TRIM GUIDE

HARRIET FAREN		
FREDERICK CHEVROLET - CADILLAC - OLDSMOBILE - GEO - TOYOTA 1505 Quenlin Road, Lebanon, PA 17042		
Residence 717/272-8118		717/274-1461 800/222-5523

EXTERIOR



12 STERLING



32 GRAPHITE*



40 COTILLION
WHITE***



41 SABLE
BLACK



44 CABERNET



54 CASHMERE



62 MIDNIGHT
BLUE



76 BRONZEST



86 CRIMSON
PEARL**



93 WHITE
DIAMOND**

Note: Leather seating areas include perforated leather on the DeVille DTS.

* Not available at start of production.

** Available at extra cost.

*** Not available on DTS or DHT.

† Not available on DTS.

INTERIOR



14 DARK GRAY LEATHER



15 NEUTRAL SHALE LEATHER



15 NEUTRAL SHALE CLOTH***



19 BLACK LEATHER



29 MIDNIGHT BLUE LEATHER*



50 OATMEAL LEATHER

