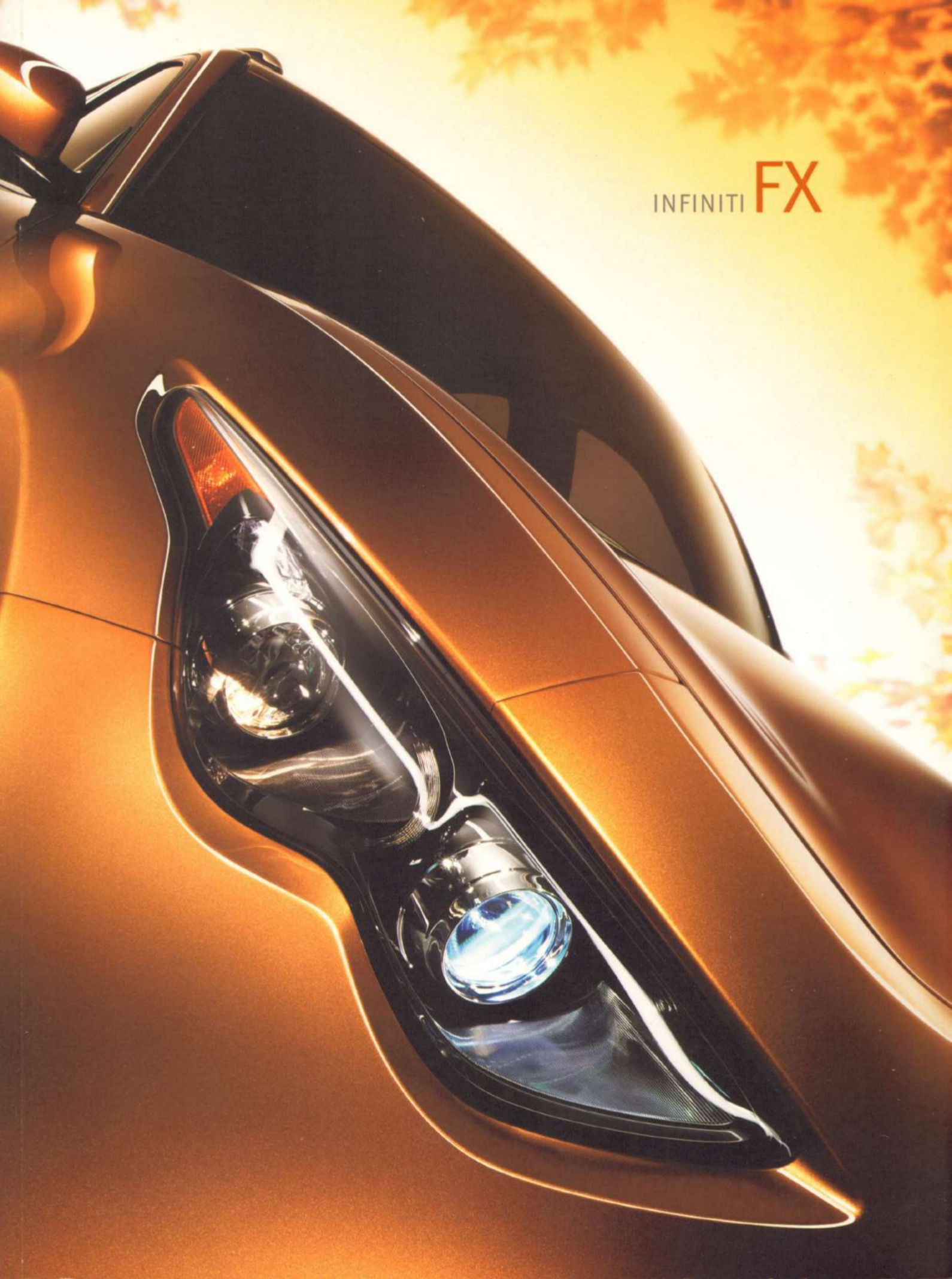


INFINITI FX





Power. Refinement. Utility.
Have everything. Sacrifice nothing.

A defining luxury crossover. Embodied by craft, shaped by
character, felt by the driver.



Blend bold presence with thoughtful interior versatility to create a sense of balance that transcends compromise. Design space with sumptuous luxury. Inject performance with stunning intensity.

Command attention.

Introducing the all-new Infiniti FX
Expressing the power of personality.







390 hp (V8)
369 lb-ft of torque


303 hp (V6)
262 lb-ft of torque

an emotional acceleration

*With a 390-hp V8 in the FX50 and 303-hp V6 in the FX35,
it's not whether you feel its power, it's how deeply you're moved by it.*

Peerlessly crafted and impressively applied, the performance of the Infiniti FX is as immediate as its commanding horsepower. That power is amplified by the endless sense of acceleration in the trademark Infiniti acceleration swell, making driving the FX a thrilling experience—and an engineering achievement. Yet the thrill is nicely balanced by a sense of purpose. Delivering improved fuel efficiency and an enhanced response, the innovative, more efficient VVEL engine in the FX50 offers a practical nod to the captivating experience of luxury performance.

Power : Feeling



Space : Sanctuary

space that's practically personal

An enhanced cargo area and redesigned cockpit help put room between this luxury performance crossover and the average sports car.

While exotic sports cars may own the overall horsepower numbers, few other vehicles can match the combination of power and versatility found in the Infiniti FX. Where bold styling and performance give the FX an aggressive stance, its use of space gives it a real edge. By moving the B-pillar forward, designers have improved the ingress and egress of the interior, making entry easier, while giving the cargo area and rear seats a roomier feel. And with folding rear seats that allow for up to 62 cubic feet of storage, there's enough volume for you to load and carry what you want. Think of it as utility that adds a dimension to the overall performance of the FX.

Driving : Personality

the confidence of cornering

*Engineered to deliver more dynamic driving,
while improving the overall feel of assured performance.*

Continuous Damping Control (CDC)¹

Continuous Damping Control (CDC[®]) with Auto and Sport modes helps optimize ride and handling. Electronic sensors measure body, wheel and lateral acceleration, sending the information to individual shocks, resulting in better control, sharper handling on corners and a smoother drive.

Rear Active Steer^{1,2}

The Infiniti FX is the only crossover³ with Rear Active Steer to help maximize handling responsiveness. Reacting to steering input and vehicle speed, the system steers the rear wheels, enabling the vehicle to track more quickly and precisely where directed. The result is a sharper response on winding roads and more confident handling on the highway.

¹ Rear Active Steer and CDC available only on FX50 Sport.

² Rear Active Steer cannot prevent accidents caused by abrupt steering, carelessness, or dangerous driving techniques. Always drive safely.

³ Based on *WardsAuto.com*'s Cross/Utility Class. 2009 FX vs. 2008 competitors.

Intelligent All-Wheel Drive

One of the most advanced all-wheel drive systems on the planet, the Infiniti FX ATTESA E-TS[®] AWD monitors wheelspin, throttle position and vehicle speed, diverting up to 50% of available power to the front wheels when road conditions are less than optimal — and seamlessly returns to a more performance-oriented, 100% rear-wheel drive when they improve.

deeply felt, intelligently applied

Luxury : Innovation

High-touch, sumptuous luxury that resonates while it engages.



The reimagined interior of the Infiniti FX exudes warmth, celebrates the supple texture of materials, while inviting you to revel in its sense of comfort and place. With enhanced available wood trim, hand-stained to bring out its natural grain, center stack accents that practically beg to be touched, and special quilted leather appointments standard on FX50 (available on FX35), the interior was built to enthrall. But it was also designed for serious driving, with cockpit-styled seating, intuitive instrumentation within easy reach and available sport seats that have adjustable bolsters and thigh extensions.

Advanced Climate Control System (ACCS)

Exclusive to the FX50, Infiniti's innovative ACCS not only helps keep the air in your cabin clean, it actively cleans it. The system automatically shuts outside air vents when exhaust fumes are detected, while its grape polyphenol filter removes up to 99.5% of airborne allergens from the cabin and its Plasmacluster™ air purifier uses charged ions to help reduce or neutralize airborne germs to help protect the cabin.

Engineering : Grace

1st–5th gear

Before reaching full acceleration, Adaptive Shift Control recognizes your driving style and road conditions, smoothing out your ride and improving shift consistency, enhancing engine efficiency without compromising power.

6th gear

Adding additional punch when you want it most, 6th gear breaks free from the conventions. Still, just like any other gear, if you need to tap your stunning, steering-column-mounted magnesium paddle shifters for a downshift, Downshift Rev Matching kicks in to give the engine a higher rev. Providing you with a better road response, as you return momentarily to lower gears.



finding joy in a new gear

Infiniti's first 7-speed automatic transmission is engineered to provide a deeper, more resonant feeling to your driving experience.

7th gear

By 7th gear, you've discovered improved acceleration, increased driving pleasure, a more comfortable ride and the optimized design of a supremely well-crafted transmission.



transforming traffic

Infiniti's technology combines visionary innovations with personal convenience to let you breathe a little easier when traffic is tight.



Ease-of-use. Peace of mind. Progressive technology. Infiniti has transformed the driving experience by offering two unique technological innovations. Introducing the industry's first Distance Control Assist (DCA)¹, which intuitively helps the driver release the throttle and apply the brakes as needed in slowing traffic. Intelligent Cruise Control (Full Speed Range)² provides the benefits of cruise control with the option of being able to select speed and distance intervals. In slowing traffic, Intelligent Cruise Control (Full Speed Range) provides the added advantage of intuitively slowing your vehicle and maintaining a safe distance between you and slowing traffic, and reaccelerates to your pre-set speed and distance as traffic flow picks up. Visionary innovations and personal conveniences available to you by a simple touch of a button.



Figure 1:

Using the FX's laser rangefinder, Distance Control Assist (DCA)¹ closely monitors and measures the distance between you and a preceding vehicle.



Figure 2:

When approaching a slower vehicle, DCA provides pedal feedback to prompt you to release the throttle.



Figure 3:

Upon release of the throttle, DCA can automatically engage the brakes and decelerate the vehicle in order to reestablish a safe distance. In slowing traffic, DCA can bring the vehicle to a complete stop.

¹ Distance Control Assist helps maintain a distance to the vehicle in front under certain conditions. Not a collision avoidance system. Failure to apply the brakes could result in an accident.

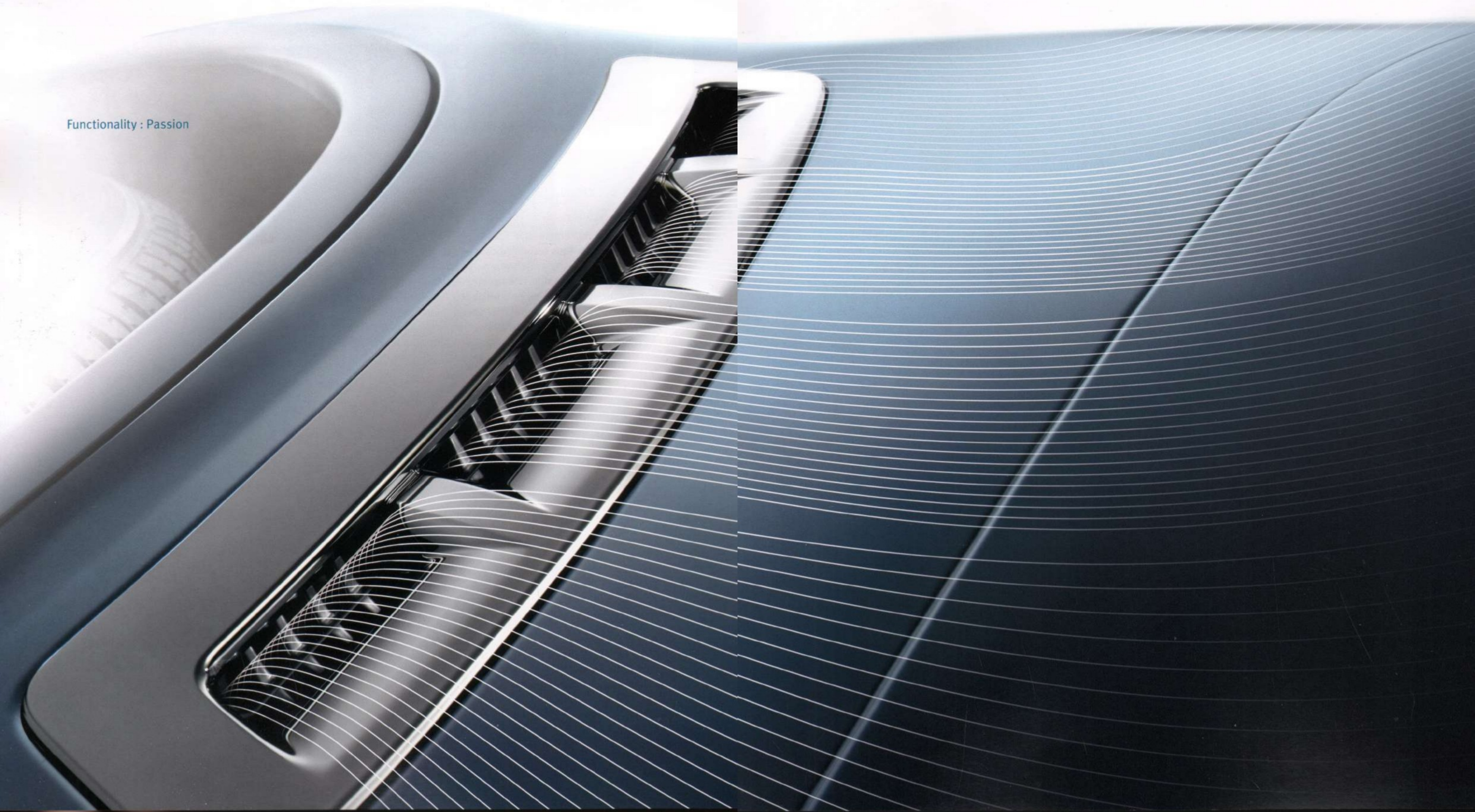
² Intelligent Cruise Control (Full Speed Range) is not a collision avoidance or warning device. Designed to use limited braking. Failure to apply the brakes could result in an accident.

the form of functionality

*By reducing front-end lift, the side air vent isn't just
a stylish addition to the Infiniti FX; it's a smartly designed one as well.*

Traditionally, side air vents are strictly a design element: to make the vehicle look a little faster, a little more stylish. At Infiniti, we are prone to challenge tradition. That's why our designers took a fresh look at how we could best utilize air vents, keeping the traditional styling, while enhancing the purpose. Take a look at the results. The side air vents on the FX actively help to improve performance by reducing front-end lift, improving the connection between your wheels and the road, while making your vehicle even more stylish.

Functionality : Passion





Styling : Purpose

feeling the true impact of style

*Combining visual appeal with impressive performance
reveals the essential creativity of the designer's craft.*

Throughout the Infiniti FX, stunning style balances with versatility to compose a seamless whole. Bold design and visionary engineering mesh, creating a masterwork defined by stylish lines and shimmering materials, while producing something optimally functional, efficient, streamlined and cool. From 14" front rotors with 4-piston opposed calipers and the aerodynamic wave hood to custom-designed 21" Enkei alloy wheels, the FX is a canvas of impressive artistry. Yet there is meaning behind every carefully crafted curve and shaped, polished metal. It is design that employs inspiration and indulgence in equal measures with the understanding that style should evoke, as well as engage. The FX makes that statement without any sacrifice.



Vision : Reality

see what's around you

The industry's first Around View Monitor¹ helps give you the ability to see potential obstacles around your car as you maneuver in close spaces.

The perfect combination of innovation and ease-of-use, the Around View Monitor is a visual tool that helps deliver peace of mind and is the first parking aid designed to visually gauge the surrounding space. Processing information from the four cameras positioned around the FX, as well as front and rear parking sensors, your parking environment is displayed on the central dashboard display, along with an overhead 360° view of other cars and objects. So you can feel more confident about the space you have to maneuver when parking.

¹ For vehicles sold in CT, available Around View Monitor is only operable while the vehicle is in reverse. The available Around View Monitor is a parking aid and cannot completely eliminate blind spots or warn of moving objects. Always check your surroundings before moving the vehicle.



Sound : Quiet

crafting perfect acoustics

Helping you tune out unwanted noise, while you tune into a premium audio system, Infiniti and Bose® allow you to sculpt your perfect aural environment.

BOSE

Sometimes the right song from your 11-speaker Bose® Premium Audio system makes taking that curve feel more thrilling; sometimes a moment of quiet can make you feel more connected to the drive. That's why Infiniti and Bose worked closely to create acoustically sensitive cabins that help keep out unwanted noise, while enhancing the impact of the sounds you want to hear. Noise, vibration and harshness controls improved sealing, while added foam insulation and tighter body construction further reduce incoming noise. Driver's Audio Stage, now equipped with an equalizer, Bose audio and personalized music played from the available 9.3GB Music Box or the available Interface System for iPod® (both standard on FX50) helps you shape your own sonic adventure.



TECHNOLOGY *Intuitive thinking that enlightens, entertains and empowers.*



Adaptive Front lighting System (AFS)

Infiniti's innovative engineering at work, AFS allows the vehicle to direct light around corners to help the driver see upcoming vehicles and pedestrians. The available system works by sensing the steering input and adapting the headlights accordingly—to maximize your visibility at night, and help reach your destination more safely.

Infiniti Mobile Entertainment System Entertain rear passengers with a movie or video game while you stay focused on the road. This available system features a larger 9-inch color monitor that automatically flips down from the overhead center console, two wireless headphones¹ and even a remote control.

RearView Monitor² When engaging reverse, a color camera discreetly mounted on the rear of the vehicle helps display obstacles directly behind you via your Vehicle Information System monitor. Onscreen guidelines showing your path move along with steering input.

Auto-leveling Headlights Light the way ahead with available auto-leveling headlights. Based on the weight in the rear of the FX, sensors work to keep your headlights level, giving you a consistent, straightforward light source, without blinding oncoming traffic.

Infiniti Intelligent Key with Push Button Ignition Without being removed from your pocket or purse, the Infiniti Intelligent Key communicates with the Infiniti FX as you approach, signaling the vehicle to unlock your door or trunk when you touch the sensor. Once inside, the Intelligent Key lets you start the engine with a touch of the Push Button Ignition. While available memory settings automatically adjust your seat, steering wheel and mirrors to your personalized settings.

Infiniti Hard Drive Navigation System³ with 3-D Graphics and Lane Guidance This available touch-screen system pinpoints your destination and gives directions that are proactively calculated based on your present location. Miss a turn and it recalculates to get you back on track. It can guide you with easy-to-follow Birdview™ 3-D graphics, as well as with verbal directions. This next-generation system calculates your route even faster, features more accurate graphics and is designed for easier use, letting you input your destination via Infiniti Voice Recognition.

XM NavTraffic® with Real-Time Traffic Information⁴ With available XM NavTraffic, enjoy live, real-time information displaying traffic flow, roadwork and accidents, so you can plan the right route. With easy-to-read incident icons that indicate specific traffic events and hazards ahead and suggested alternate routes to best avoid delays, it's an invaluable resource.

Interface System for iPod® Just plug in your iPod® to play your favorite songs through your Bose® Premium Audio system in this easy-to-use interface. Located in the center armrest, this available feature includes a connector and syncs up with your monitor to show your playlist and song options.

9.3 GB Music Box You can store up to 2,900 songs on the vehicle's available 9.3GB hard drive from your CDs and play your MP3s and WMA music files through the dash-mounted CompactFlash® slot.

Bluetooth® Hands-free Phone System⁵ This available technology seamlessly links your compatible cell phone to the Infiniti FX's onboard computer system. Access phone numbers, answer and make calls through the vehicle's audio system. All without taking your hands off the wheel.



¹ Includes two pairs of wireless headphones. Additional headphones are optional accessories.

² The RearView Monitor is a convenience but is not a substitute for proper backing procedures. Always turn and check that it is safe to do so before backing up. The RearView Monitor may not detect every object behind you.

³ Factory-installed option. Never program while driving. GPS mapping may not be detailed in all areas or reflect current road regulations.

⁴ Required XM radio and XM NavTraffic monthly subscriptions sold separately after three-month trial period. Other fees and taxes may apply, including a one-time activation fee. XM NavTraffic only available in select markets. Subscription fee is consumer only. All fees and programming subject to change. Subscriptions subject to Customer Agreement available at xmradio.com. XM service only available in the 48 contiguous United States and Canada. The XM name and XM NavTraffic are registered trademarks of XM Satellite Radio Inc. ©2008 XM Satellite Radio Inc. All rights reserved. All other trademarks are the property of their respective owners.

⁵ Availability of specific features is dependent upon the phone's Bluetooth® support. Please refer to your phone owner's manual for details. Cell phone not included. The Bluetooth word mark and logos are owned by Bluetooth SIG, Inc., and any use of such marks by Nissan is under license.

INTERIOR *Reenvisioned. Remade. Refined. Abundant luxury that's never out of reach.*

Remote Folding Seats¹ Quickly and conveniently fold down your rear seats with the pull of a handle, perfect when you need to put luggage or other larger items into the cargo area.

Electric Liftgate Closure Assist Made of composite materials and reinforced with steel, the lightweight rear door eases into place, then automatically seals for a secure, quiet fit.

Solid Magnesium Paddle Shifters Beautifully designed available magnesium paddle shifters provide a tactile feel to a thrilling drive, while giving you control over the vehicle's shift points, without removing your hands from the wheel.

Advanced Climate Control System (ACCS) In addition to easy-to-use temperature controls to maximize your comfort, the FX50's standard Advanced Climate Control System uses an air purifier with Plasmacluster™ technology to help reduce pollutants in the cabin.

Welcome Lighting Infiniti designers use various light sources throughout the cabin to draw you in, to enhance your personal connection between you and the space. This warm glow gives life to the vehicle, imparting the sensation of comfort, luxury and modernity, while generating passion for the drive ahead. It is light designed to both illuminate your vehicle and your sense of well-being.

8-way Power Front Seats Easily customizable front seats that anticipate your—and your passenger's—needs. Get the available memory system to automatically return your seats, side mirrors and steering wheel to your presets.

Climate-controlled Front Seats The available climate-controlled seats circulate cool or warm air through the driver's or front-passenger's seatbacks and bottom cushions. Quickly, the exact climate you desire surrounds you, cooling you off (or warming you up) faster and more thoroughly than you ever thought possible.

Aluminum Sport Pedals Aluminum-clad, rubber-studded for enhanced grip, the available sport pedals of the Infiniti FX are placed precisely where they need to be for optimal performance.

Sport Seats Tailored for luxury, engineered for performance, available Infiniti Sport Seats offer the driver power-adjustable thigh and torso bolsters, so you can personalize your perfect settings, to keep you stylishly comfortable while driving.

Hand-stained Maple Wood Adding a sense of warmth and highlighting the grain, the available hand-stained Maple wood, inspired by the grain of a fine stringed instrument, showcases the pride of craftsmanship found throughout the FX.

¹ See Specifications for availability. This feature should only be used when vehicle is stopped.



Interior Craftsmanship

Handstitching and refinement define the all-new high-touch interior of the Infiniti FX. Specially designed quilted leather, standard on FX50 and available on FX35, defines the commitment to comfort, while the hand-stained Maple wood trim is a showcase of craftsmanship. Everything is considered, from the tactile quality of the dashboard to the smooth black finishes in the center stack, the reimagined interior of the FX is a testament to the artistry—and humanity—of our designers.



SAFETY



Infiniti Safety Shield is our comprehensive approach to safety. It includes rigorous crash testing, over 50 standard safety features on every vehicle and available advanced safety technologies. Infiniti Safety Shield is designed and developed into every vehicle we build to help protect you and your passengers.

Lane Departure Prevention (LDP)¹

This groundbreaking active safety feature senses when you start to drift out of your lane and lightly applies the appropriate brakes to help ease you back between the right lines. It's an aid, not an override, and can be turned off when not in use.

Lane Departure Warning (LDW)¹

If you start to drift out of your lane, Lane Departure Warning will sound an audible warning, alerting and allowing you to adjust your trajectory accordingly.



forward collision warning

intelligent brake assist

Intelligent Brake Assist (IBA)²

This active safety feature continuously monitors and analyzes closing speeds to a vehicle ahead or to a stationary obstacle. If the driver does not adequately respond to the Forward Collision Warning and a collision cannot be avoided, IBA will automatically engage the brakes to help reduce collision speed and impact, thus mitigating the consequences of the accident.

Forward Collision Warning (FCW)*

Using the FX's laser rangefinder, this feature helps alert the driver of an imminent collision by providing a visual and an audible warning.

* FCW cannot prevent accidents due to carelessness or dangerous driving techniques. Always drive safely.

EXTERIOR COLORS



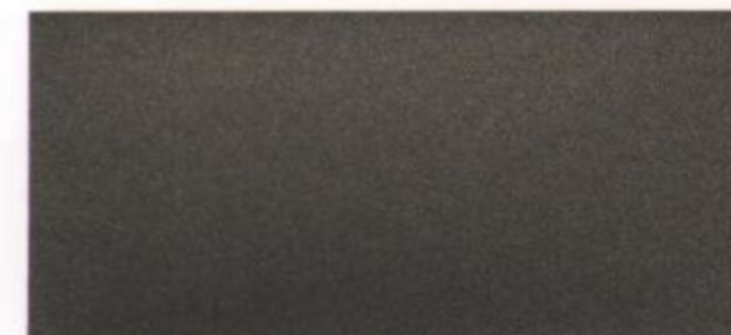
moonlight white (QAA)



liquid platinum (K23)



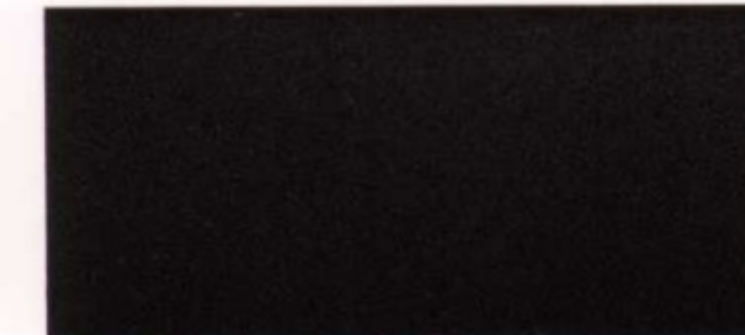
platinum graphite (K51)



umbria twilight (JAA)



blue slate (K52)



midnight mocha (NAE)



mojave copper (CAC)



black obsidian (KH3)

Scratch Shield Paint A soft clear coat technology that can heal most light scratches and swirl marks in the clear coat that do not penetrate into the base coat. Scratch Shield will help paint to better maintain gloss over time.

INTERIOR COLORS



wheat leather (C)



java leather (P)



graphite leather (G)

INTERIOR TRIM



black lacquer (FX35)



hand-stained maple wood and piano black
(standard FX50; optional FX35)

b = base p = premium	moonlight white			liquid platinum			platinum graphite			umbria twilight			blue slate			midnight mocha			mojave copper			black obsidian		
	FX35			FX50			FX35			FX50			FX35			FX50			FX35			FX50		
	b	p	all	b	p	all	b	p	all	b	p	all	b	p	all	b	p	all	b	p	all	b	p	all
wheat	o	o	o	o	o	o	o	o	o	o	o	o	o	o	o	o	o	o				o	o	o
java																			o	o		o	o	
graphite	o	o	o	o	o	o	o	o	o	o	o	o	o	o	o				o	o		o	o	o

Please see the actual colors at your local Infiniti retailer.

All illustrations, photographs and specifications in this catalog are based on the latest product information; some vehicle parts cannot be shown in certain photographs. Some vehicles shown with optional equipment. See actual vehicles for complete accuracy. INFINITI Division of Nissan North America, Inc., reserves the right to make changes at any time, without notice, in prices, colors, materials, equipment, specifications and models, and to discontinue models or equipment. Availability and delivery time for particular models and equipment combinations may vary. For information on availability, additional options or accessories, contact your Infiniti retailer. All specifications, options, and accessories shown in this catalog apply to the 48 contiguous states. Specifications, options and accessories may differ in Alaska, Hawaii, U.S. territories and other countries. HomeLink is a registered trademark of Johnson Controls, Inc. Birdview is a trademark of Xanavi Corporation. The Bluetooth word mark and logos are owned by the Bluetooth SIG, Inc., and any use of such marks by Nissan is under license. Other trademarks and trade names are those of their respective owners. The XM name and related logos are registered trademarks of XM Satellite Radio Inc. All rights reserved. iPod® is a registered trademark of Apple, Inc. All rights reserved. iPod® not included. CDC® is a registered trademark of ZF Sachs AG. Plasmaclear is a trademark of Sharp Corporation. CompactFlash is a registered trademark of SanDisk Corporation. Always wear your seat belt, and please don't drink and drive. INFINITI names, logos, product names, feature names, and slogans are trademarks owned by or licensed to Nissan North America, Inc. and/or its North American subsidiaries.

Infiniti Advanced Air Bag System (AABS)³ Dual-stage supplemental front air bags with seat belt sensors and an occupant-detection sensor adjust their inflation rate depending on crash severity, seat occupancy and seat belt usage. If the front-passenger's seat is empty, a sensor will deactivate the air bag.

Seat-mounted and Roof-mounted Side-impact Air Bags³ Side-impact supplemental air bags are placed in the front-seat side bolsters so they move with the seat to help maintain optimal positioning. Roof-mounted curtain supplemental air bags deploy from the headliner above the side windows, helping to give outboard occupants enhanced head protection in the case of a side impact or rollover. Tied to the vehicle's rollover and side-impact sensors, they are designed to offer added protection by staying inflated for an extended time.

Electronic Brake force Distribution (EBD) To help optimize braking performance for a variety of vehicle loads, EBD adjusts the amount of brake force applied to the front and rear wheels for improved braking performance, reduced front-end "dive" during braking and more even brake wear.

Brake Assist (BA) In emergency braking situations, many drivers don't brake hard enough, soon enough. Brake Assist monitors how you apply the brakes and, sensing emergency braking, applies maximum brake force for potentially shorter stops.

4-wheel Anti-lock Braking System (ABS) The Infiniti FX's 4-wheel, 4-channel ABS helps you maintain control by helping to prevent wheel lockup. As a result, you can continue to steer through emergency maneuvers.

Vehicle Dynamic Control (VDC)⁴ Acting in tandem with the Traction Control System, VDC compares actual vehicle cornering performance to the driver's input, adjusting power levels and applying appropriate brake pressure to individual wheels to help correct oversteer or understeer, helping keep the vehicle on the steered path.

Traction Control System (TCS) To help enhance rear-wheel grip when accelerating, the Infiniti FX's Traction Control System senses wheelspin and automatically reduces engine output and/or brakes the spinning wheel to help give you better traction.

Pre-Crash Seat Belts The Pre-Crash Seat Belt system tightens the front seat belts to help restrain occupants during certain emergency maneuvers. If the crash is unavoidable, early seat belt restraint can help maximize the effectiveness of the other occupant-protection devices such as air bags.

¹ The Lane Departure Warning/Lane Departure Prevention systems operate above approximately 45 mph and only when the lane markings are clearly visible on the road. They will not prevent loss of control. See your owner's manual for more details.
² IBA is not a collision avoidance system. It may not provide warning or braking in certain conditions. Never rely solely on IBA.
³ Air bags are only a supplemental restraint system; always wear your seat belt. Even with the occupant-classification sensor, rear-facing child restraints should not be placed in the front-passenger's seat. Also, all children 12 and under should ride in the rear seat properly secured in child restraints, booster seats, or seat belts according to their size. Air bags will only inflate in certain accidents; see your owner's manual for more details.
⁴ VDC cannot prevent accidents caused by abrupt steering, carelessness, or dangerous driving techniques. Always drive safely.
⁵ Tire Pressure Monitoring System is not a substitute for regular tire pressure checks.

Seat Belt Pretensioners Help tighten the front seat belts in certain frontal collisions, while load limiters are designed to "give" a little, helping reduce belt-force load transmitted to front occupants. All rear-seat passengers, including those in the center, are secured by 3-point seat belts.

Active Head Restraints (AHR) In certain rear-end collisions, front-seat Active Head Restraints move upward and forward to help cushion the head, and to help assist in reducing whiplash-type injuries.

Zone Body Construction A reinforced steel-ribbed structure helps maintain the integrity of the passenger compartment, while front and rear crumple zones help absorb and redirect crash energy.



Snug Kids The first venture of its kind, Snug Kids is our online guide to selecting and correctly installing a child restraint seat for your Infiniti automobile. Our safety engineers evaluated numerous child restraint seats, installing them in every Infiniti car and SUV. Visit Infiniti.com/snugkids to view or download the results and recommendations.

Additional Safety Features:

- 3-point height-adjustable front seat belts with pretensioners and load limiters, driver's seat Emergency Locking Retractor (ELR) and passenger's seat ELR and Automatic Locking Retractor (ALR)
- Second-row 3-point seat belts with ELR and ALR
- Slide-away brake pedal assembly moves brake pedal away from the driver in certain frontal collisions
- Tire Pressure Monitoring System (TPMS) provides specific information for each tire and low pressure warning⁵
- LATCH System (Lower Anchors and Tethers for Children) helps simplify proper installation of complete child restraint seats
- First Aid kit
- Remote keyless entry system with selective unlocking of driver's door or all doors
- Infiniti Vehicle Immobilizer System embeds an encoded transponder chip into ignition key. The engine control computer will not allow the engine to start without the correct key and transponder signal
- Remote power-opening of windows; closing via exterior door lock
- Battery saver helps prevent accidental discharging if electrical accessories are left on
- Vehicle Security System sounds alarm if intrusion is detected

		FX35	FX35 AWD	FX50 AWD
POWER				
ENGINE				
3.5-liter (3,498 cc) 24-valve V6, aluminum-alloy block and heads		•	•	
5.0-liter (5,026 cc) 32-valve V8, aluminum-alloy block and heads				•
VALVETRAIN				
Double overhead camshaft (DOHC), 4 valves per cylinder with microfinished camshafts. Steel intake and exhaust valves. Continuously Variable Valve Timing Control System (CVTCS) optimizes opening of intake and exhaust valves		•	•	
Double overhead camshaft (DOHC), 4 valves per cylinder with microfinished camshafts. Steel intake and exhaust valves. Continuously Variable Valve Timing Control System (CVTCS) optimizes opening of intake and exhaust valves. Variable Valve Event and Lift (VVEL) for intake valves improves performance, emissions and fuel efficiency				•
INTAKE SYSTEM				
High-flow tuned induction system		•	•	•
HORSEPOWER				
303 hp @ 6,800 rpm		•	•	
390 hp @ 6,500 rpm				•
TORQUE				
262 lb-ft @ 4,800 rpm		•	•	
369 lb-ft @ 4,400 rpm				•
TRANSMISSION				
Electronically controlled 7-speed automatic with Adaptive Shift Control (ASC). Manual shift mode offers sequentially selectable manual gearshifts and Downshift Rev Matching (DRM)		•	•	•
DRIVE WHEELS				
Rear-wheel drive		•		
Intelligent All-Wheel Drive (AWD)			•	•
HANDLING				
STEERING				
Type	Speed-sensitive variable-assist power rack-and-pinion	•	•	•
Turning diameter	36.7 feet	•	•	•
SUSPENSION				
Front	Independent double-wishbone suspension, Dual Flow Path™ shock absorbers, stabilizer bar	•	•	•
Rear	Independent, multi-link suspension, Dual Flow Path™ shock absorbers, stabilizer bar	•	•	•
Sport Package	Continuous Damping Control (CDC®) with Auto and Sport modes and Rear Active Steer			○
BRAKES (FRONT/REAR)				
12.6 x 1.3-inch ventilated discs/12.1 x 0.6-inch ventilated discs; 4-wheel, 4-channel ABS		•	•	
Aluminum 4-piston opposed front calipers with 14.0 x 1.3-inch ventilated discs/2-piston opposed rear calipers with 13.8 x 0.8-inch ventilated discs; 4-wheel, 4-channel ABS				•
WHEELS AND TIRES				
Wheels				
Split 5-spoke, 18 x 8.0-inch aluminum alloy		•	•	
5-spoke, 20 x 8.0-inch aluminum alloy (Available with Deluxe Touring Package)		○	○	
Enkei 6-spoke, 21 x 8.0-inch aluminum alloy				•
Tires				
265/60R18V all-season performance		•	•	
265/50R20V all-season performance (Available with Deluxe Touring Package)		○	○	
265/45R21V all-season performance				•
265/45R21W summer high-performance (Available with Sport Package)				○
Spare tire				
Temporary use, T175/90D18 (Steel wheel on FX35; alloy wheel on FX50)		•	•	•

FEATURES

EXTERIOR

	FX35	FX35 AWD	FX50 AWD
High Intensity Discharge (HID) bi-functional xenon headlights	●	●	●
Integrated front fog lights	●	●	●
LED stoplights and center high-mounted stoplight (CHMSL)	●	●	●
Aluminum hood with gas strut supports	●	●	●
Scratch Shield paint	●	●	●
Integrated rear spoiler	●	●	●
UV-reducing solar glass	●	●	●
Rear privacy glass	●	●	●
Rear window intermittent wiper and defroster with timer	●	●	●
Dual heated power-adjustable and folding outside mirrors	●	●	●
Front driver and passenger LED puddle lamps	●	●	●
Speed-sensitive wipers	●	●	●
Aluminum roof rails	○	○	●
Dual chrome exhaust finishers	●	●	●
Side air vents	●	●	●

INTERIOR

Infiniti Intelligent Key with Illuminated Push Button Ignition	●	●	●
Dual Zone Automatic Temperature Control system	●	●	●
Advanced Climate Control System with Plasmacluster™ air purifier			●
Rear-seat heating and cooling vents in center console with ducts under front seats	●	●	●
Power windows with illuminated switches and front-window one-touch auto-up/down with auto-reverse feature	●	●	
Power windows with illuminated switches and front-and rear-window one-touch auto-up/down with auto-reverse feature			●
Power sliding glass moonroof with one-touch auto-open/close, tilt feature and sliding sunshade	●	●	●
Power door locks with auto-locking feature	●	●	●
Retained accessory power for windows and moonroof	●	●	●
12-point sequential welcome lighting illuminated entry system	●	●	●
Illuminated visor vanity mirrors	●	●	●
Overhead sunglasses storage	●	●	●
Dual overhead front map lights, rear-seat reading lights	●	●	●
Front seatback map pockets; front door pockets	●	●	●
Dual front and rear cup holders	●	●	●
Front armrest with dual-level storage compartment, 12-volt power outlet and auxiliary input jack	●	●	●
Rear-seat center armrest with center console	●	●	●
Front and rear carpeted floor mats	●	●	●
Electric liftgate closure assist	●	●	●
Cargo net tie-down anchors in cargo area	●	●	●

SEATING AND TRIM

	FX35	FX35 AWD	FX50 AWD
Leather-appointed interior	●	●	●
Quilted leather-appointed seating	○	○	●
8-way power driver's seat, including 2-way power lumbar support; 8-way power front-passenger's seat	●	●	●
Climate-controlled front seats	○	○	●
Reclining rear seatbacks	●	●	●
Black lacquer interior trim	●	●	
Hand-stained Maple wood with piano black interior trim	○	○	●
Leather-wrapped 3-spoke steering wheel and shift knob with aluminum accent	●	●	●
Stainless steel kick-plate with Infiniti logo	●	●	●
60/40-split folding rear seatbacks; includes remote fold-down releases in cargo area	●	●	●

AUDIO SYSTEM

11-speaker Bose® Premium Audio system with Burr-Brown DAC, AM/FM/CD with MP3 playback capability and Radio Data System (RDS)	●	●	●
In-dash, single-feed 6-disc CD autochanger	●	●	
9.3GB Music Box hard drive with CompactFlash® slot	○	○	●
Auxiliary audio input jack	●	●	●
Interface System for iPod®	○	○	●
XM® Satellite Radio¹	●	●	●
Speed-sensitive volume control	●	●	●
Steering wheel-mounted audio controls	●	●	●

INSTRUMENTATION AND DRIVER CONTROLS

Fine Vision electroluminescent gauges	●	●	●
Tilt and telescopic steering wheel	●	●	●
Bluetooth® Hands-free Phone System²	○	○	●
Multi-function trip computer with outside temperature display	●	●	●
Infiniti Controller with 7-inch color LCD screen for audio, climate-control, fuel economy, maintenance and comfort and convenience features	●	●	
Infiniti Hard Drive Navigation System³ with 8-inch color touch-screen, Lane Guidance and 3-D building graphics	○	○	●
XM NavTraffic® with Real-Time Traffic information¹	○	○	●
RearView Monitor⁴	●	●	●
Around View Monitor⁵	○	○	●
Auto-dimming inside mirror with HomeLink® Universal Transceiver	●	●	●
Integrated digital compass on inside mirror	●	●	
Cruise control with steering wheel-mounted switches	●	●	●
Infiniti analog clock	●	●	●

OPTIONS⁶

	FX35	FX35 AWD	FX50 AWD
PREMIUM PACKAGE	○	○	●
Climate-controlled front seats			
Bluetooth® Hands-free Phone System²			
Interface System for iPod®			
2-position driver's memory seat			
Outside mirror with reverse tilt-down			
Power tilt and telescopic steering wheel			
Solid magnesium paddle shifters			
Aluminum pedals			
Quilted leather-appointed seats			
Aluminum roof rails			
Cargo cover and cargo net			
NAVIGATION PACKAGE (Requires Premium Package on FX35.)	○	○	●
Infiniti Hard Drive Navigation System³ with 8-inch color touch-screen, Lane Guidance and 3-D building graphics			
XM NavTraffic® with Real-Time Traffic information¹			
9.3GB Music Box hard drive with CompactFlash® slot			
Single in-dash CD player (replaces 6-disc CD)			
Voice recognition for audio and navigation			
Around View Monitor⁵			
Sonar System (Front/Rear)			
TECHNOLOGY PACKAGE (Requires Navigation Package on FX35.)	○	○	○
Intelligent Brake Assist (IBA)⁷ with Forward Collision Warning (FCW)⁸			
Lane Departure Prevention (LDP) and Lane Departure Warning (LDW) systems⁹			
Pre-crash seat belts			
Intelligent Cruise Control (Full Speed Range)¹⁰			
Distance Control Assist (DCA)¹¹			
Rain-sensing front wipers			
SPORT PACKAGE			○
Continuous Damping Control (CDC®) with Auto and Sport modes			
Rear Active Steer			
Auto-leveling Adaptive Front lighting System (AFS)			
Sport-style front seats with thigh support			
Driver's seat with power bolster adjustment (4-way)			
Dark-tinted headlights, side air vents and lower door trim			
21" SUMMER TIRES (Only available on Sport Package; no-cost option.)			○
High-performance 265/45R21W tires			
DELUXE TOURING PACKAGE (Requires Premium Package.)	○	○	
5-spoke 20-inch aluminum-alloy wheels			
Auto-leveling Adaptive Front lighting System (AFS)			
Hand-stained Maple wood with piano black trim			
INFINITI MOBILE ENTERTAINMENT SYSTEM PACKAGE (Requires Technology Package.)	○	○	○
Infiniti Mobile Entertainment System with ceiling-mounted, flip-down 9-inch color screen, center console-mounted DVD player with wireless remote and two pairs of wireless headphones			

INDIVIDUAL OPTIONS

Roof rail crossbars	Cargo area protector and organizer
Illuminated kick plates	Splash guards
Tow hitch	

DIMENSIONS AND FIGURES

EXTERIOR		
Coefficient of drag	FX35 FX50	0.35 0.36
Overall length/width/height	191.3 inches/75.9 inches/66.1 inches (with roof rails)	
Wheelbase	113.6 inches	
Track width (front/rear)	64.4 inches/64.6 inches	
INTERIOR		
Headroom (front/rear)	39.3 inches/38.5 inches	
Legroom (front/rear)	44.7 inches/34.6 inches	
Shoulder room (front/rear)	57.3 inches/57.4 inches	
Hip room (front/rear)	54.9 inches/54.2 inches	
WEIGHT AND CAPACITY		
Curb weight	FX35 FX35 AWD FX50 AWD	4,094 lbs 4,299 lbs 4,575 lbs
Weight distribution (front/rear)	FX35 FX35 AWD FX50 AWD	52/48 percent 53/47 percent 54/46 percent
Passenger volume	102.5 cubic feet	
Cargo volume	24.8 cubic feet 62.0 cubic feet	(rear seats upright) (rear seats down)
Towing capacity¹²	FX35 FX35 AWD FX50 AWD	N/A 2,000 lbs 3,500 lbs
Emissions	Certified LEV2 (Low Emission Vehicle Tier 2)	
Fuel capacity	23.8 gallons	
Estimated Fuel Economy (city/highway)	FX35 FX35 AWD FX50 AWD	16 mpg/23 mpg 16 mpg/21 mpg 14 mpg/20 mpg

GENUINE INFINITI

Accessories

Enhance, personalize and protect your Infiniti FX with accessories that are crafted with the same exacting standards as the rest of the vehicle.

Moonroof wind deflector	Swing-away hitch-mounted bike carrier
Hood protector	Hitch ball (Class II)
Vehicle cover	Carpeted floor mats (replacement)
Retractable cargo cover	All-season floor mats
Ski/snowboard carrier	Cargo area net
Hatch tent	First Aid kit
LoadWarrior™ by Yakima	License plate frames
Anklebiter® by Yakima	Touchup paint
Kayak carrier	Wheel locks

Contact your local Infiniti retailer to learn more about Genuine Infiniti Accessories and about financing accessories when purchasing your new Infiniti.

¹ Required XM radio and XM NavTraffic monthly subscriptions sold separately after three-month trial period. Other fees and taxes may apply, including a one-time activation fee. XM NavTraffic only available in select markets. Subscription fee is consumer only. All fees and programming subject to change. Subscriptions subject to Customer Agreement available at xmradio.com. XM service only available in the 48 contiguous United States and Canada. The XM name and XM NavTraffic are registered trademarks of XM Satellite Radio Inc. ©2008 XM Satellite Radio Inc. All rights reserved. All other trademarks are the property of their respective owners.

² Availability of specific features is dependent upon the phone's Bluetooth® support. Please refer to your phone owner's manual for details. Cell phone not included. The Bluetooth word mark and logos are owned by Bluetooth SIG, Inc., and any use of such marks by Nissan is under license.

³ Factory-installed option. Never program while driving. GPS mapping may not be detailed in all areas or reflect current road regulations.

⁴ The RearView Monitor is a convenience but is not a substitute for proper backing procedures. Always turn and check that it is safe to do so before backing up. The RearView Monitor may not detect every object behind you.

⁵ For vehicles sold in CT, available Around View Monitor is only operable while the vehicle is in reverse. The available Around View Monitor is a parking aid and cannot completely eliminate blind spots or warn of moving objects. Always check your surroundings before moving the vehicle.

⁶ May require additional options or option packages.

⁷ IBA is not a collision avoidance system. It may not provide warning or braking in certain conditions. Never rely solely on IBA.

⁸ FCW cannot prevent accidents due to carelessness or dangerous driving techniques. Always drive safely.

⁹ The Lane Departure Warning/Lane Departure Prevention systems operate above approximately 45 mph and only when the lane markings are clearly visible on the road. They will not prevent loss of control. See your owner's manual for more details.

¹⁰ Intelligent Cruise Control (Full Speed Range) is not a collision avoidance or warning device. Designed to use limited braking. Failure to apply the brakes could result in an accident.

¹¹ Distance Control Assist helps maintain a distance to the vehicle in front under certain conditions. Not a collision avoidance system. Failure to apply the brakes could result in an accident.

¹² When towing at or near Maximum Trailer Weight, the allowable vehicle cargo and/or number of passengers is reduced because it is necessary to stay below the Gross Combined Weight Rating and the Gross Axle Weight Rating. See your Infiniti Towing Guide and owner's manual for proper use.

Personalized. Attentive. Committed.

The Infiniti Total Ownership Experience®

Rated by owners as the #1 luxury brand in vehicle satisfaction:¹



While the advantages of owning an Infiniti can be felt most intimately while sitting in the driver's seat of one of our vehicles, it is our goal to ensure that every aspect of ownership is a rewarding experience. The Infiniti Total Ownership Experience is an unprecedented commitment to professionalism and customer service.

It is a promise backed by every Infiniti employee. We are all actively engaged in rewarding Infiniti owners with an overall experience that builds a relationship of trust, and delivers a feeling of true luxury.

PREMIUM PURCHASING At your Infiniti dealership, you'll find all the components of a smooth purchasing process. From a friendly shopping environment with knowledgeable sales consultants to expeditious negotiations and straightforward Infiniti Financial Services financing options, and finally to impeccable vehicle delivery. It is the first step in building a lasting relationship. Get more information at www.infiniti.com/financing.

CUSTOMER SATISFACTION As an Infiniti driver, you'll enjoy our commitment with a host of premium services like a complimentary Infiniti Service Loan Car,² Trip Interruption Benefits such as alternative transportation, lodging and meals, and a 24-hour Infiniti Roadside Assistance program for added security when traveling.³

INFINITI LIMITED WARRANTIES Our Standard Infiniti Limited Warranty Basic coverage is 4 years/60,000 miles. The Powertrain coverage is 6 years/70,000 miles. The Corrosion Perforation coverage is 7 years/unlimited mileage. An optional Elite Infiniti Extended Protection Plan offers coverage up to 7 years/100,000 miles.⁴

OWNERSHIP ONLINE Not only a tool to help you learn more about the vehicles we offer, the Infiniti.com web site also contains an "Ownership" section where you can easily access maintenance schedules, warranty information and articles exclusive to Infiniti owners.

EX M 35/45 QX G Sedan⁵ G Coupe FX

¹ ©2007 AutoPacific, Inc. Vehicle Satisfaction Award.

² Subject to availability. Available during the 4-year/60,000-mile Basic warranty period for scheduled warranty or customer-paid repairs (not including collision repairs). Customer must be 25 years of age or older with a valid U.S. driver's license. The customer must provide proof of primary insurance. Other restrictions apply to loan car, including mileage and day-use limitations. This program is subject to change without notice at any time.

³ Roadside Assistance and Trip Interruption Program available during the first four years after initial new-vehicle delivery. See retailer for details.

⁴ See your local Infiniti retailer for details and read the warranty booklet or extended protection plan.

⁵ 2009 G Sedan shown (Available Fall 2008).



*Movement that excites. Technology that empowers.
Beauty that inspires.*



INFINITI.

Learn more about the promise of design. Visit Infiniti.com/FX

©2008 INFINITI Division of Nissan North America, Inc. IN-7643 Reorder #095071, 103,050 (6/08, CQ)



Reducing our environmental footprint is an important goal at Infiniti. That's why this brochure uses paper stock that is certified to contain a minimum of 10% post-consumer waste materials.