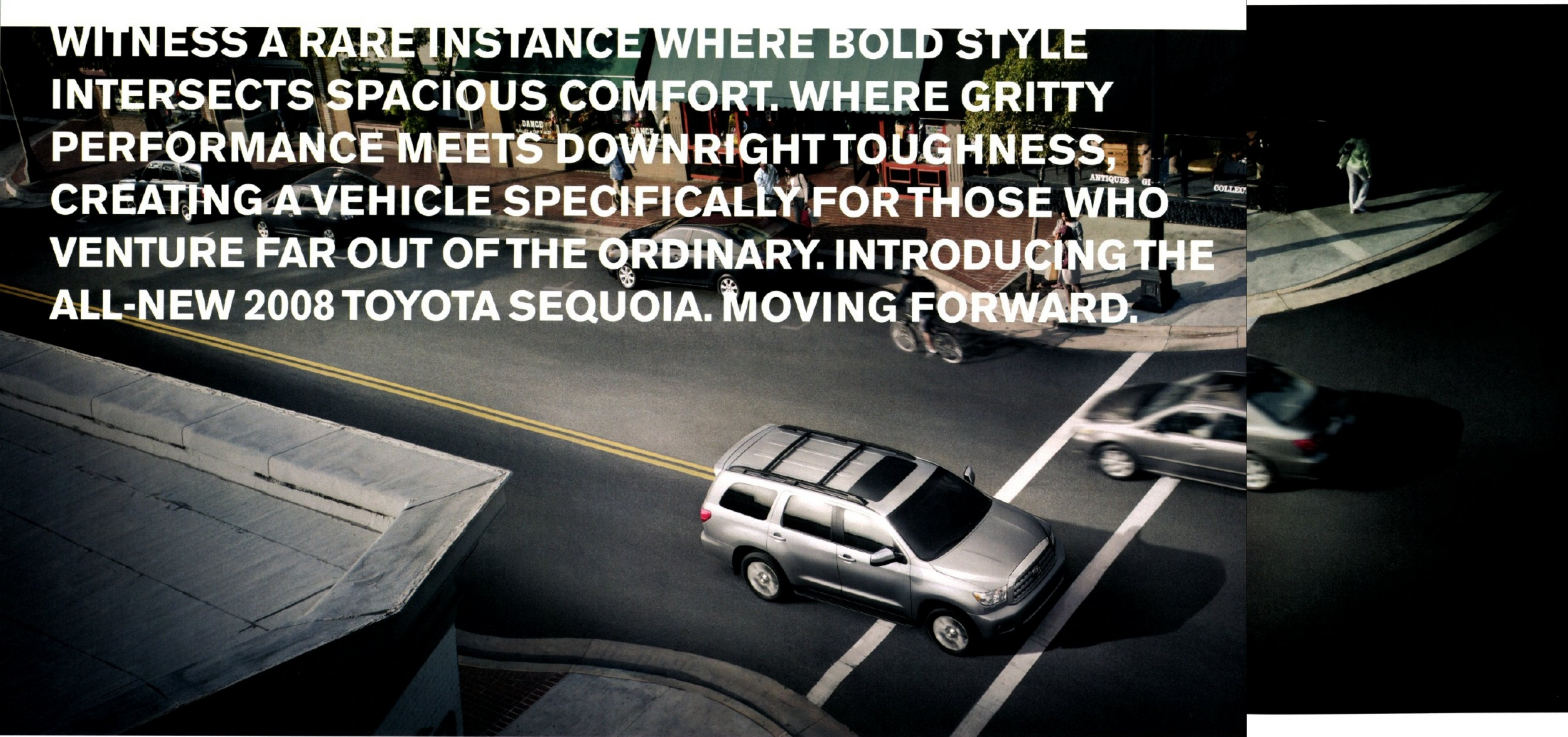


SEQUOIA 08



moving forward

WITNESS A RARE INSTANCE WHERE BOLD STYLE
INTERSECTS SPACIOUS COMFORT. WHERE GRITTY
PERFORMANCE MEETS DOWNRIGHT TOUGHNESS,
CREATING A VEHICLE SPECIFICALLY FOR THOSE WHO
VENTURE FAR OUT OF THE ORDINARY. INTRODUCING THE
ALL-NEW 2008 TOYOTA SEQUOIA. MOVING FORWARD.



Limited 4x4 shown in Silver Sky Metallic with available rear spoiler and 20-in. alloy wheels.

How do you maintain your sense of adventure? By dropping into a raging river on a surfboard? Or maybe by loading up the crew for a family portrait on the south face of Mt. Middle-Of-Nowhere? No matter your preferred outlet, the all-new Sequoia is well-suited for all your activities.

SEQUOIA LIMITED

The dishes will wait, life won't. Which is why the all-new Sequoia is designed to help you get your weekend going. Even if your weekend starts on Tuesday. Features like available 4-wheel drive (4x4) with Active Traction Control (A-TRAC) help enhance traction on-road or off-highway and monitor acceleration over split-traction roads. So you can get to and from that remote destination. No problem.

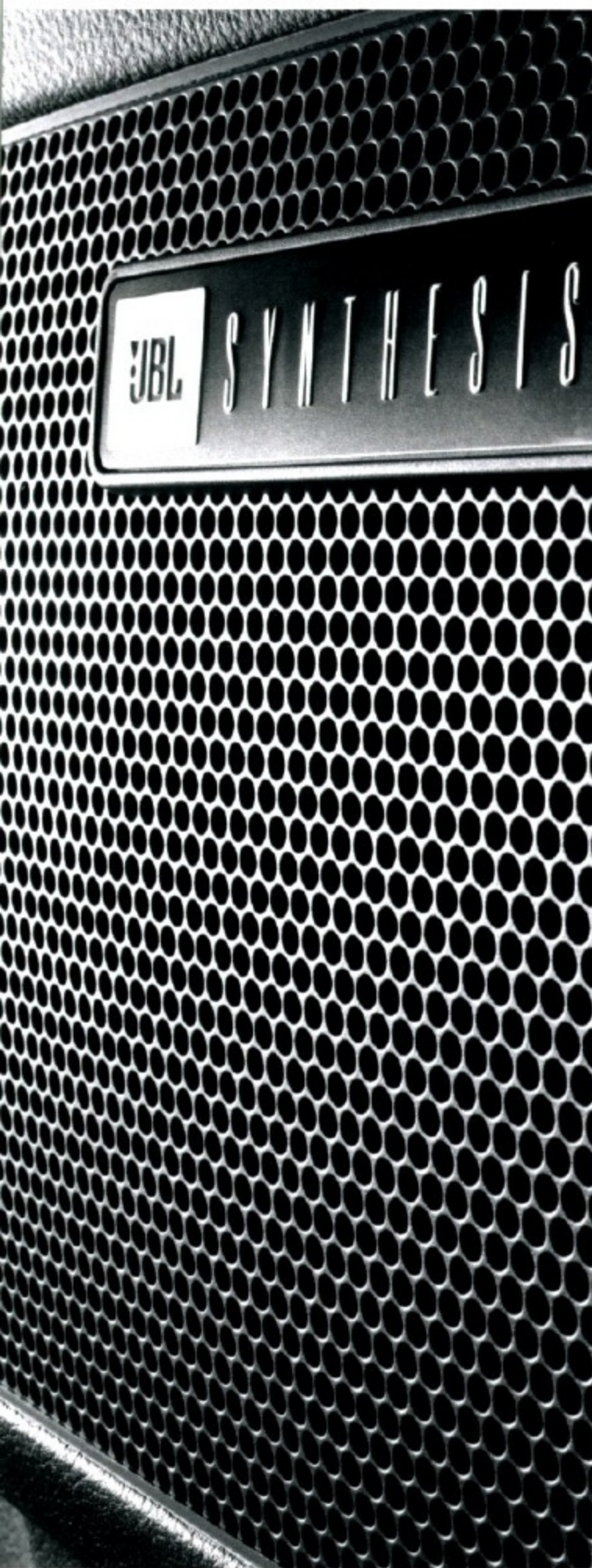


Platinum 4x4 shown in Slate Metallic with available Dynamic Laser Cruise Control (DLCC).¹



AVAILABLE POWER REAR DOOR
To access Sequoia's cargo space, press the available power rear door² button on the remote key fob and the rear door gently releases upward. After stowing your gear, simply press the rear door close button located in the rear door frame inside Sequoia, or use the key fob to close the rear door automatically.

1. See footnote 12 in Combinations section.
2. Standard on Platinum, available on Limited models.



Platinum 4x4 interior shown in Graphite with available rear-seat DVD entertainment system.

The Sequoia interior is designed to keep you comfortable, relaxed and entertained for the duration of the ride. Press a button and the available power memory seats¹ automatically adjust to your preprogrammed driving position. Set the tilt/telescopic steering wheel and dial in ideal comfort levels on the available heated/ventilated driver and front passenger seats.¹ Need some tunes? Turn up the volume on the available 14-speaker JBL Synthesis[®] audio system.²

TOUCH-SCREEN NAVIGATION³ WITH BACKUP CAMERA⁴

Sequoia's available touch-screen DVD navigation system³ includes a backup camera.⁴ Put Sequoia in reverse, and it automatically shows what the camera sees immediately behind you. Bluetooth^{®5,6} technology is built into the system for hands-free phone capability.



REAR-SEAT DVD ENTERTAINMENT SYSTEM

With an available rear-seat DVD entertainment system you can play video games or watch the latest Hollywood blockbuster. Of course you can store music, movies and games in any of the spacious storage compartments.



1. Platinum models only. 2. Standard on Platinum and Limited, available on SR5 models.
3. See footnote 4 in Combinations section. 4. See footnote 5 in Combinations section.
5. See footnote 3 in Combinations section. 6. Bluetooth[®] is only available with JBL[®] system.

From front to back, the Sequoia cabin is a roving study in ergonomic design and functional comfort. With available 7¹- or 8²-passenger seating, you can take along the family, the extended family or a bunch of friends. As you go, settle back and relax: Sequoia's sophisticated three-zone³ climate control system will put a smile on each and every one of your passengers. Need more room for your gear? Fold the seats flat and you've got 120.8 cu. ft.⁴ of cargo space.⁵ And the versatile rear center storage console⁶ makes it easy to organize CDs, DVDs, video games and books.



Platinum interior shown in Red Rock with available rear-seat DVD entertainment system.



INNOVATIVE STORAGE
The adjustable flip/fold rear center console on Platinum turns into a small table or work surface. The overhead console⁷ organizes small items. And you can keep passengers refreshed with 16⁸ cup and bottle holders.



INTELLIGENT SEATING DESIGN
To help make the most of its spacious interior, Sequoia features a sliding second-row seat with the versatility of a 40/20/40 split-fold design.² The sliding second row's mobility means you can add leg room when you need it, or slide the seat forward to access the third-row seat without the usual gymnastics. The third-row seat is wide enough to accommodate three adults in true comfort, or it can split-fold 60/40 for a combination of people and cargo.⁵ And with the available power reclining and folding third-row seat, settling in for the long haul is as easy as pushing a button.

1. Standard on Platinum, available on Limited models. 2. Standard on Limited and SR5 models. 3. Three zones include driver, front passenger and second and third rows. 4. Without moonroof. 5. See footnote 14 in Combinations section. 6. Platinum models only. 7. Available on SR5 and Limited models. 8. 16 on Platinum models only.

With an available 10,000-lb. towing capacity^{1,2} and a 39.2-ft. turning radius, Sequoia tows your toys with ease. The Fully Boxed frame adds strength and durability, while the available TOW/HAUL mode selects transmission shift points for optimum towing power,² allowing you to make light work of heavy loads. Whether you choose the available all-aluminum 381-hp 5.7L V8 or the 276-hp 4.7L V8,³ both engines are designed to give the Sequoia more punch in the passing lane and an Ultra Low Emission Vehicle (ULEV-II) rating.



ELECTRONIC MODULATED SUSPENSION

Sequoia adjusts to road conditions automatically. To help maintain vehicle height due to passengers or cargo weight, the Toyota Electronic Modulated Suspension (H-TEMS)⁴ alters the damping forces of the shock absorbers to compensate for changes in load.



1. SR5 4x2 with available 5.7L V8 and Tow Package. 2. See footnote 2 in Combinations section. 3. SR5 models only. 4. Platinum models only.

Limited 4x4 shown in Nautical Blue Metallic with available 20-in. alloy wheels, Cold Weather Package, moonroof and accessory bike racks.²

Just to set the record straight, Sequoia is not merely a “people mover.” It’s also able to manage terrain like mountain roads, mud-caked trails and water-slicked asphalt. That’s because Sequoia offers an available Multi-Mode 4-wheel-drive system (4x4 models). Simply turn the shift dial to engage a 4-wheel-drive mode and let the Torsen®¹ limited-slip center differential do its work. The center differential locks up to get maximum traction on extremely slippery or uneven surfaces. So go ahead: Travel the road less traveled, the road more traveled – even roads that aren’t on the map.



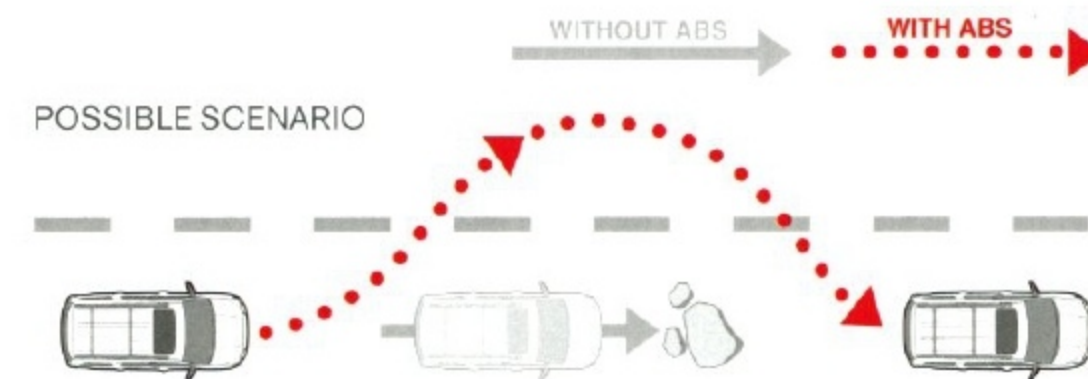
SR5 4x4 shown in Silver Sky Metallic with available 5.7L V8, roof rack, running boards, moonroof, Tow Package² and front and rear parking sonar.

AUTOMATIC LIMITED-SLIP DIFFERENTIAL
Sequoia knows how to be flexible. Literally. The double-wishbone front suspension and rear independent suspension smooth out the most rugged of roads, while the Automatic Limited-Slip Differential (Auto LSD) enhances start-off performance on road surfaces like sand or mud.



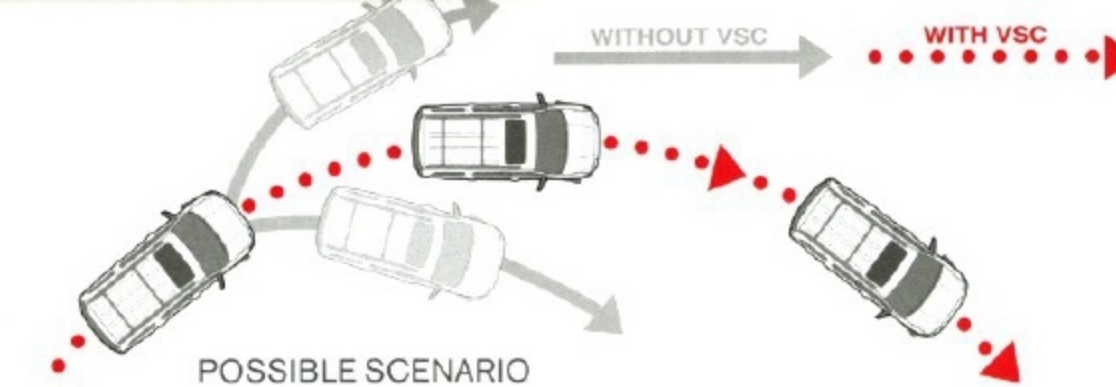
1. Torsen® is a registered trademark of Zexel Torsen, Inc. 2. See footnote 2 in Combinations section.

When it comes to safety, Sequoia delivers. Equipped with advanced safety features like Toyota's Star Safety System,TM Sequoia helps you manage challenging road and traffic conditions.



ADVANCED CONTROL TECHNOLOGIES

An Anti-lock Brake System (ABS) helps prevent Sequoia's brakes from locking up, while the sophisticated Vehicle Stability Control (VSC)¹ helps prevent front and rear wheelslip by monitoring your steering angle and comparing it to the direction in which your vehicle is traveling. Having control means having peace of mind.



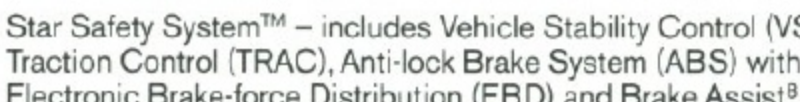
- A** Engage the available Dynamic Laser Cruise Control (DLCC)² and Sequoia helps maintain a preset distance from other vehicles by using a front-bumper laser range finder that gauges the distance of the vehicle traveling ahead and adjusts driving speeds accordingly.
- B** The standard dual stage front airbag system³ senses impact severity and manages airbag deployment accordingly.
- C** Standard three-row side curtain airbags³ cover all three passenger rows from front to back.
- D** 3-point seatbelts come in all seating positions. The front seats have pretensioners and 2-step force limiters. The second-row seats now have an adjustable shoulder anchor and pretensioner.
- E** The Roll-Sensing Side Curtain Airbag (RSCA)³ system controls deployment of side curtain airbags based on roll angle and speed from roll rate sensors. The RSCA switch prevents inadvertent side curtain airbag deployment when traversing extremely uneven or rugged terrain which may cause the vehicle to tilt.
- F** A Child Restraint System (CRS) includes lower anchors on all second-row seats and tether anchors on all second-row seats and the middle seat in the third row.
- G** The Tire Pressure Monitor System (TPMS)^{4,5} evaluates the pressure of the tires. When pressure is critically low, the monitor issues a warning, allowing the driver to address concerns.



TOYOTA'S STAR SAFETY SYSTEMTM

A combination of five safety features that come standard with every Sequoia, Toyota's Star Safety SystemTM includes: Vehicle Stability Control (VSC)¹, Traction Control (TRAC), Anti-lock Brake System (ABS), Electronic Brake-force Distribution (EBD) and Brake Assist.⁶ These features are designed to help keep the driver in control of the vehicle at all times.

1. See footnote 7 in Combinations section. 2. See footnote 12 in Combinations section. 3. See footnote 9 in Combinations section. 4. The Toyota Tire Pressure Monitor alerts the driver when tire pressure is critically low. For optimal tire wear and performance, tire pressure should be checked regularly with a gauge; do not rely solely on the monitor system. See your Owner's Manual for details. 5. Does not include spare tire pressure. 6. See footnote 8 in Combinations section.

ISO-1

lease

SR5

Colo

Colo

the co

Bac

All information presented herein is based on data available at the time of printing, is subject to change without notice and pertains specifically to mainland U.S.A. vehicles only.

See numbered footnotes in Combinations section.

08 SPECIFICATIONS

MECHANICAL/PERFORMANCE	SR5	LIMITED	PLATINUM
Engine			
4.7-liter DOHC 32-valve i-FORCE V8 with VVT-i; 276 hp @ 5400 rpm; 314 lb.-ft. @ 3400 rpm	Standard	NA	NA
5.7-liter DOHC 32V i-FORCE V8 with dual independent Variable Valve Timing with intelligence (VVT-i); 381 hp @ 5600 rpm; 401 lb.-ft. @ 3600 rpm	Available	Standard	Standard
Ignition	Electronic, with Toyota Direct Ignition (TDI)		
Emissions	ULEV-II		
Transmission	5-speed electronically controlled automatic transmission with intelligence (ECT-i); sequential shift mode and uphill/downhill shift logic (4.7L V8 models) 6-speed electronically controlled automatic transmission with intelligence (ECT-i); sequential shift mode and uphill/downhill shift logic; TOW/HAUL mode (5.7L V8 models)		
Body construction	Reinforced body-on-frame construction		
Suspension	Front high-mounted coil-spring independent double-wishbone front suspension with low-pressure gas-filled shock absorbers and hollow stabilizer bar; rear coil-spring independent double-wishbone with low-pressure gas-filled shock absorbers and hollow stabilizer bar Toyota Electronic Modulated Suspension (H-TEMS) (Platinum models only)		
Steering	Engine speed-sensing Variable Flow Control (VFC) power-assisted rack-and-pinion		
Turning circle diameter, curb to curb (ft.)	39.2	39.2	39.2
Brakes	Power-assisted 4-wheel Anti-lock Brake System (ABS) with Electronic Brake-force Distribution (EBD), Brake Assist [®] Traction Control (TRAC), Vehicle Stability Control (VSC) ⁷ and Auto LSD		
Vehicle Stability Control (VSC) ⁷	Standard	Standard	Standard
Multi-Mode 4-wheel drive with locking center differential	Standard (4x4 models)	Standard (4x4 models)	Standard (4x4 models)
EXTERIOR DIMENSIONS (in.)			
Overall width	79.9	79.9	79.9
Overall height (with available roof rack)	74.6 (77.0)	77.0	77.0
Overall length	205.1	205.1	205.1
Wheelbase	122.0	122.0	122.0
Track (front/rear)	67.9/69.1	67.9/69.1	67.9/69.1
INTERIOR DIMENSIONS front/second/rear (in.)			
Head room	39.7/39.4/38.5	39.7/39.4/38.5	NA
with moonroof	38.3/38.9/36.0	38.3/38.9/36.0	38.3/38.9/36.0
Shoulder room	66.4/66.1/66.0	66.4/66.1/66.0	66.4/66.1/66.0
Hip room	61.5/62.6/50.4	61.5/62.6/50.4	61.5/62.6/50.4
Leg room	42.5/36.5/35.3	42.5/36.5/35.3	42.5/36.5/35.3
Seating capacity	8	8/7 (optional)	7
OFF HIGHWAY			
Approach/departure angle (degrees)	4x2: 27/20; 4x4: 27/21	4x2: 27/20; 4x4: 27/21	4x2: 27/20; 4x4: 27/21
Ground clearance (in.) (4x2/4x4)	9.9/10.0	9.9/10.0	9.6/9.6
Skid plates	Fuel tank and transfer case skid plates (4x4 models)		
WEIGHTS AND CAPACITIES			
Curb weight (lb.) (4x2/4x4)	5680/5920 (4.7L V8) 5730/5985 (5.7L V8)	5730/5985	5745/6045
Gross Vehicle Weight Rating – GVWR (lb.) (4x2/4x4)	7000/7300 (4.7L V8) 7100/7300 (5.7L V8)	7100/7300	7100/7300
Gross Combined Weight Rating – GCWR (lb.)	16,960/17,260 (4.7L V8) 17,080/17,280 (5.7L V8)	17,080/17,280	17,080/17,280
Towing capacity ² (lb.) (4x2/4x4) with Tow Package without Tow Package	8300 (4.7L V8) 10,000 (5.7L V8) 6300/6000 (4.7L V8) 8300/8000 (5.7L V8)	9500/9100 NA	9100/8800 NA
Cargo volume (cu. ft.) behind front/middle/rear seats ¹⁴ with moonroof without moonroof	120.1/66.6/18.9 120.8/66.6/18.9	120.1/66.6/18.9 120.8/66.6/18.9	120.1/66.6/18.9 NA
Fuel tank (gal.)	26.4	26.4	26.4
TIRES			
Size			
Standard	P275/65R18	P275/65R18	P275/55R20
Available	NA	P275/55R20	NA
Type	Mud-and-Snow-rated radials	Mud-and-Snow-rated radials	Mud-and-Snow-rated radials
Spare	P255/70R18	P255/70R18	P255/70R18
MILEAGE ESTIMATES (mpg city/highway/combined) ¹⁵			
4x2	14/17 (4.7L V8); 14/19 (5.7L V8)	14/19	14/19
4x4	13/16 (4.7L V8); 13/18 (5.7L V8)	13/18	13/18

08 COMBINATIONS

COLOR



Black with Graphite, Red Rock¹⁶ or Sand Beige interior



Nautical Blue Metallic with Graphite, Red Rock¹⁶ or Sand Beige interior



Timberland Mica with Graphite,¹⁶ Red Rock¹⁶ or Sand Beige interior



Pyrite Mica with Graphite, Red Rock¹⁶ or Sand Beige interior



Cassis Pearl with Graphite, Red Rock¹⁶ or Sand Beige interior



Desert Sand Mica with Red Rock¹⁶ or Sand Beige interior



Slate Metallic with Graphite or Red Rock¹⁶ interior



Silver Sky Metallic with Graphite or Red Rock¹⁶ interior



Arctic Frost Pearl¹⁶ with Graphite, Red Rock¹⁶ or Sand Beige interior



Super White¹⁷ with Graphite or Sand Beige interior

WHEEL



SR5 and Limited standard 18-in. aluminum alloy wheel



Limited available 20-in. aluminum alloy wheel



Platinum standard 20-in. diamond-cut finish aluminum alloy wheel

WARRANTIES

Every Toyota Car, Truck and SUV is built to exceptional standards. And that's not idle boasting. We back it up with these Limited Warranty Coverages:

Basic: 36 months/36,000 miles (all components other than normal wear and maintenance items).

Powertrain: 60 months/60,000 miles (engine, transmission/transaxle, front-wheel drive, rear-wheel drive, seatbelts and airbags).

Rust-Through: 60 months/unlimited miles (corrosion perforation of sheet metal).

Emissions: Coverages vary under Federal and California regulations. Refer to applicable *Owner's Warranty Information* booklet for details.

Accessories: For accessories purchased at the time of the new vehicle purchase, the Toyota Accessory Warranty coverage is in effect for 36 months/36,000 miles from the vehicle's in-service date, which is the same coverage as the Toyota New Vehicle Limited Warranty.

For accessories purchased after the new vehicle purchase the coverage is 12 months, regardless of mileage, from the date the accessory was installed on the vehicle, or the remainder of any applicable new vehicle warranty, whichever provides greater coverage, with the exception of car covers. Car covers are warranted for 12 months from the date of purchase and do not assume any coverage under the Toyota New Vehicle Limited Warranty.

You may be eligible for transportation assistance if it's necessary that your vehicle be kept overnight for repairs covered under warranty. Please see your authorized Toyota dealership for further details.

For complete details about Toyota's warranties, please visit www.toyota.com, refer to the applicable *Owner's Warranty Information* booklet or see your Toyota dealer.

FABRIC/LEATHER



SR5 fabric available in Graphite



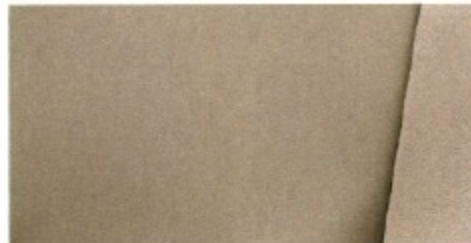
Limited and SR5 leather available in Graphite



Platinum perforated leather available in Graphite



SR5 fabric available in Sand Beige



Limited and SR5 leather available in Sand Beige



Platinum perforated leather available in Sand Beige



Platinum perforated leather available in Red Rock

1. Toyota strives to build vehicles to match customer interest and thus they typically are built with popular options and option packages. Not all options/packages are available separately and some may not be available in all regions of the country. See toyota.com for information about options/packages commonly available in your area. If you would prefer a vehicle with no or different options, contact your dealer to check for current availability or the possibility of placing a special order. 2. Before towing, confirm your vehicle and trailer are compatible, hooked up and loaded properly and that you have any necessary additional equipment. Do not exceed any Weight Ratings and follow all instructions in your *Owner's Manual*. The maximum you can tow depends on the total weight of any cargo, occupants and available equipment. 3. The Bluetooth[®] technology phones listed on toyota.com have been tested for compatibility with Toyota vehicles. Performance will vary based on phone software version, coverage and your wireless carrier. Phones are warranted by their manufacturer, not Toyota. 4. The navigation system is designed to assist in locating an address or point of interest. Discrepancies may be encountered between the system and your actual location. Road system changes may affect the accuracy of the information provided. Rely on your common sense to decide whether to follow a specified route. Detailed coverage not available in every city or roadway. Periodic updates available at an additional cost. See your *Navigation System Owner's Manual* for further details. 5. The backup camera does not provide a comprehensive view of the rear area of the vehicle. You should also look around outside your vehicle and use your mirrors to confirm rearward clearance. Cold weather will limit effectiveness and view may become cloudy. 6. HomeLink[®] is a registered trademark of Johnson Controls, Inc. 7. Vehicle Stability Control (VSC) is an electronic system designed to help the driver maintain vehicle control under adverse conditions. It is not a substitute for safe driving practices. Factors including speed, road conditions and driver steering input can all affect whether VSC will be effective in preventing a loss of control. Please see your *Owner's Manual* for further details. 8. Brake Assist is designed to help the driver take full advantage of the benefits of ABS. It is not a substitute for safe driving practices. Braking effectiveness also depends on proper brake-system maintenance and tire and road conditions. 9. All the airbag (AB) systems are Supplemental Restraint Systems. All ABs (if installed) are designed to inflate only under certain conditions and in certain types of severe collisions: frontal and knee ABs typically inflate in frontal collisions; side and side curtain ABs in side collisions; Roll-Sensing Curtain ABs at a severe tilt degree, roll or lateral G-force. In all other accidents, the ABs will not inflate. To decrease the risk of injury from an inflating AB, always wear seatbelts, sit upright in the middle of the seat as far back as possible and do not lean against the door. Do not put objects in front of an AB or around the seatback. Do not use a rearward-facing child seat in any front passenger seat. The force of an inflating AB may cause serious injury or death. See your *Owner's Manual* for further information/warnings. 10. Satellite radio requires XM[®] or Sirius-compatible receiver and monthly service fee. See your Toyota dealer for further details. Reception of the satellite signal may vary depending on location. All fees and programming subject to change. Subscriptions subject to the terms and conditions available at www.xmradio.com or www.sirius.com. Available only in the 48 contiguous United States. 11. Headphones are for passenger use only. Do not use while operating vehicle. 12. Dynamic Laser Cruise Control is designed to assist the driver and is not a substitute for safe and attentive driving practices. Please see your *Owner's Manual* for important instructions and cautions. 13. Available for vehicles with factory security. 14. Cargo and load capacity limited by weight and distribution. 15. 2009 EPA-estimated mileage. Actual mileage will vary. 16. Platinum models only. 17. Not available on Platinum models.

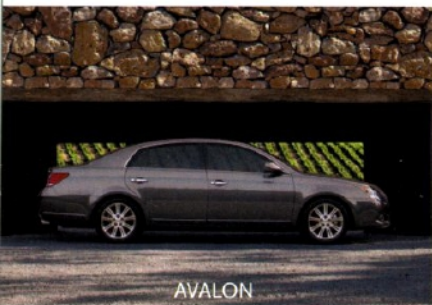


For Toyota Mobility program details, go to www.toyota.com/mobility or call the Toyota Customer Assistance Center at 1-800-331-4331

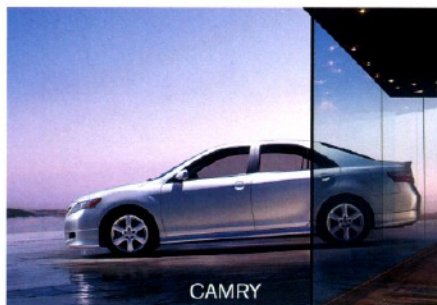




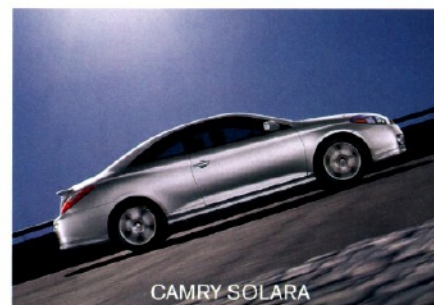
Our eyes are always on the road ahead. Striving to find ways to help you be safe. Go farther on a tank of gas. To help the earth go further on its limited resources. Moving Forward is embedded in our DNA. It's shared by our dealers, and ultimately, inspired by our customers. toyota.com 1-800-GO-TOYOTA



AVALON



CAMRY



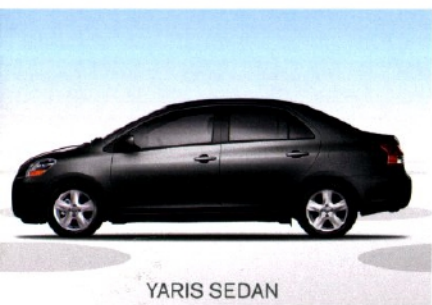
CAMRY SOLARA



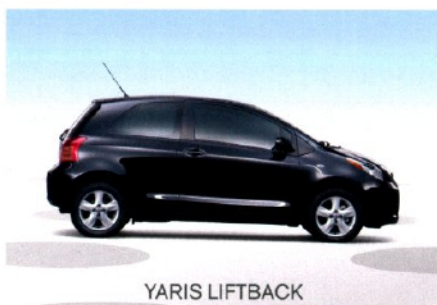
COROLLA



PRIUS



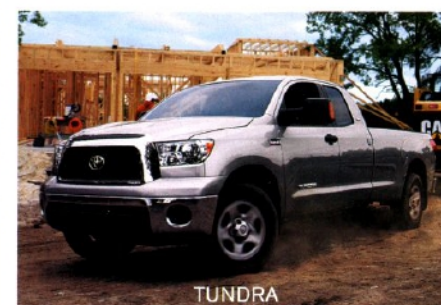
YARIS SEDAN



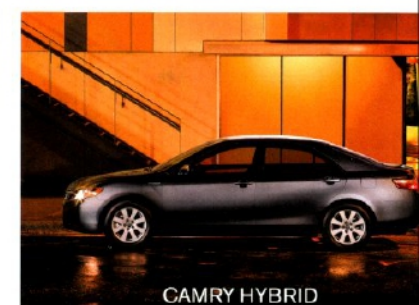
YARIS LIFTBACK



MATRIX



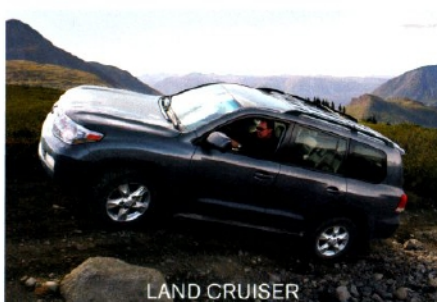
TUNDRA



CAMRY HYBRID



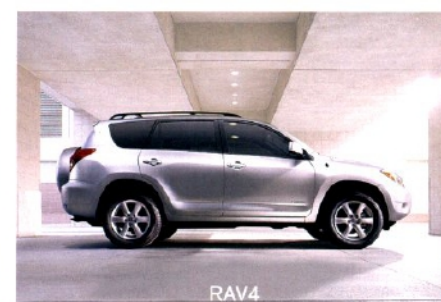
TACOMA



LAND CRUISER



4RUNNER



RAV4



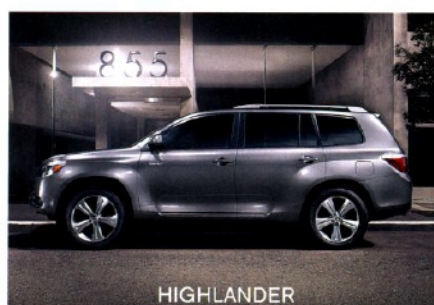
HIGHLANDER HYBRID



FJ CRUISER



SEQUOIA



HIGHLANDER



SIENNA



Hybrid Synergy Drive,[®] powering the Prius, Camry Hybrid and Highlander Hybrid, combines a clean-burning gas engine with an efficient electric motor to deliver excellent fuel economy, low emissions and performance.